

4.3 Power Supply Requirements

4.3.1 Input Requirements

INVERTER MAX BRINGTHNESS (Vadj:5.0v), LOAD=120KΩX4(Room Temperature 25°C ±4°C)

ITEM	SYMBOL	MIN.	TYP.	MAX.	UNIT	REMARK
Input voltage	V _{in}	10.8	12	13.2	V	
Input current	I _{in}		2250	2500	mA	FOR 4 LOAD
Output Current	I _{out}	6.0	6.5	7.0	mA	FOR 1 LOAD
Frequency	F	50.0	55.0	60.0	KHZ	FOR 1 LOAD
H.V open	V _{open}	1450	1600	1750	V _{rms}	NO LOAD
H.V Load	V _{load}	710	810	910	V _{rms}	RL=120KΩ
Start voltage	V _{st}	1650	1750	1850	V _{rms}	RL=CCFL
Protect delay time	PDT	0.4	1	4	Sec	

4.3.2 Output Requirements

INVERTER MIN BRINGTHNESS (Vadj:0.0v), LOAD=120KΩX4(Room Temperature 25°C ±4°C)

ITEM	SYMBOL	MIN.	TYP.	MAX.	UNIT	REMARK
Input voltage	V _{in}	10.8	12	13.2	V	
Input current	I _{in}		660	750	mA	FOR 4 LOAD
Output Current	I _{out}	3.0	3.5	4.0	mA	FOR 1 LOAD
Frequency	F	50.0	55.0	60.0	KHZ	FOR 1 LOAD
H.V open	V _{open}	1450	1600	1750	V _{rms}	NO LOAD
Start voltage	V _{st}	1650	1750	1850	V _{rms}	RL=CCFL
H.V Load	V _{load}	350	450	550	V _{rms}	RL=120KΩ

	Gy		0.556	0.586	0.616		
Chromaticity of Blue(CIE 1931)	Bx		0.116	0.146	0.176		
	By		0.073	0.103	0.133		
Luminance of white Note 4[Note 4]	YL		240	300		cd/m ²	IL=7.0 mArms
White Uniformity	$\bar{\delta}w$		—	1.25	1.33		Note5
Cross talk					1.50%		Note6

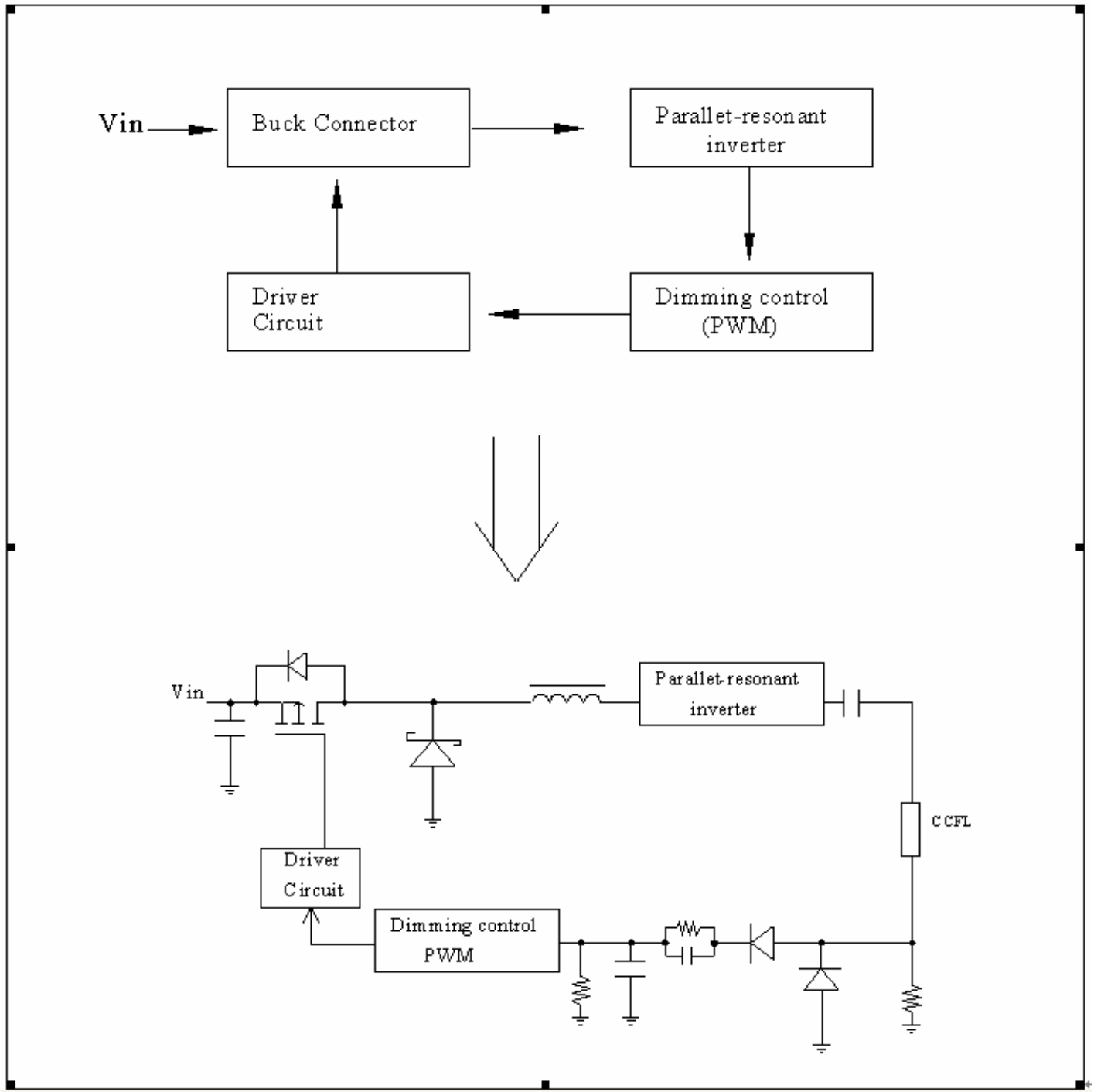
4.4.3 Parameter Guide for CFL Inverter

The backlight system is an edge-lighting type with 2- CCFL(Cold Cathode Fluorescent Lamp). The characteristics of four lamps are shown in the following tables.

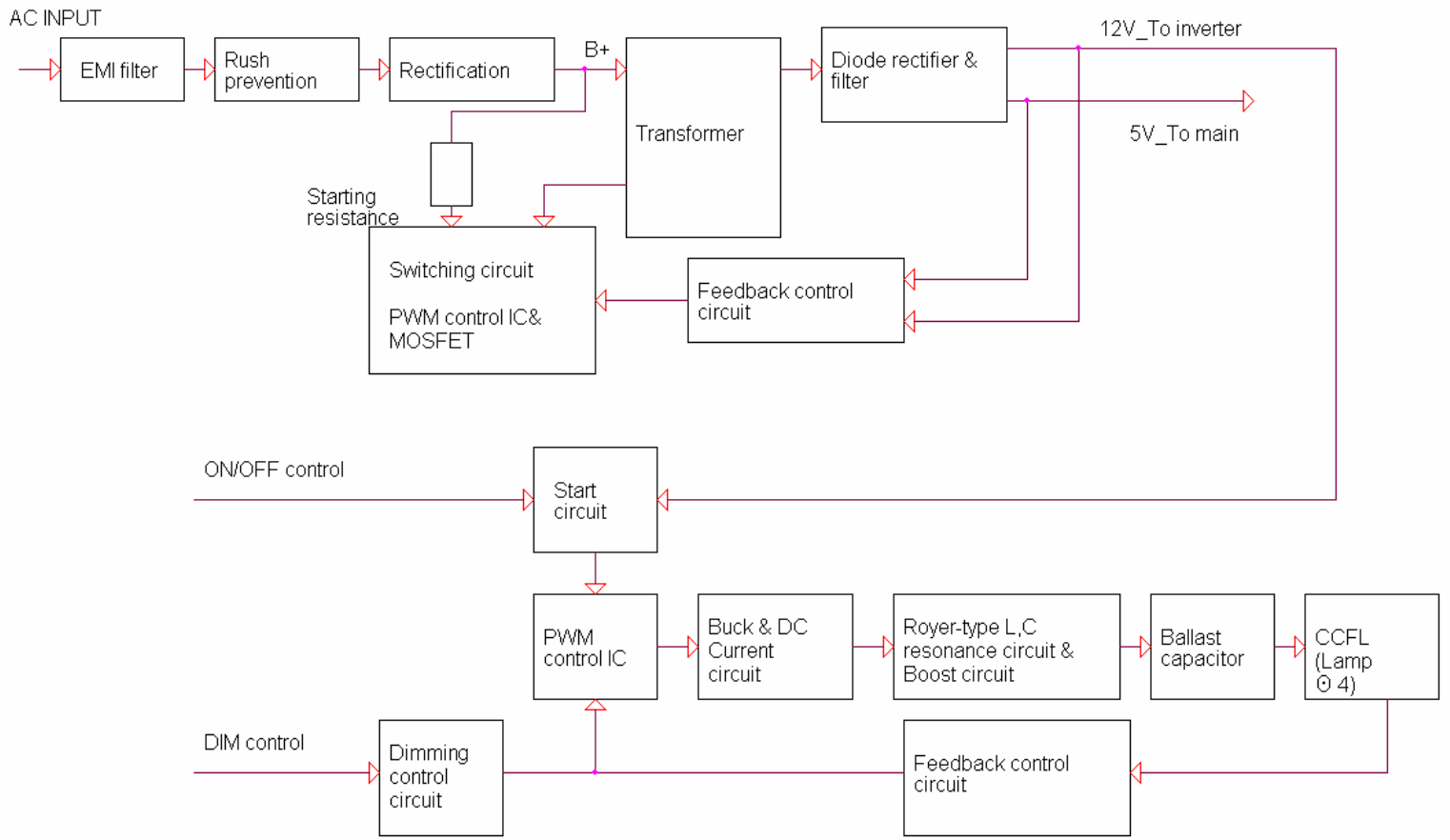
PARAMETER	SYMBOL	MIN	TYP	MAX	UNIT	REMARK
Lamp current range	IL	3.0	7.0	8.0	mArms	Note1
Lamp voltage	VL		725		Vrms	
Lamp power consumption	PL		5.1		W	Note2 IL=7.0mA
Lamp frequency	FL		52		kHz	Note3
Established starting voltage	Vs			1100	Vrms	Ta=25°C
				1420	Vrms	Ta=0°C
Lamp life time	LL	40000	50000		hour	Note5

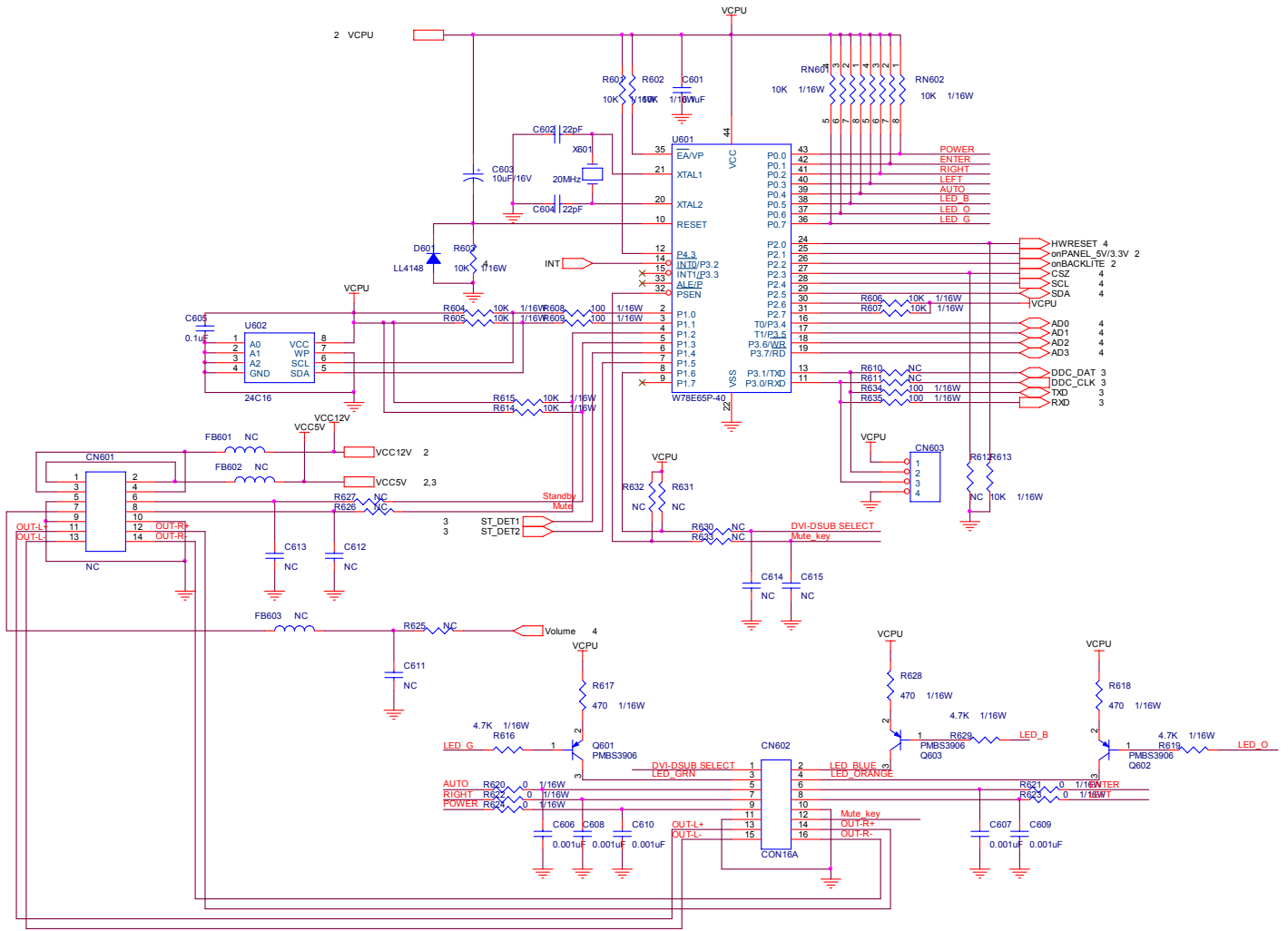
5.3.2 Inverter/Power Board

Inverter Block Diagram

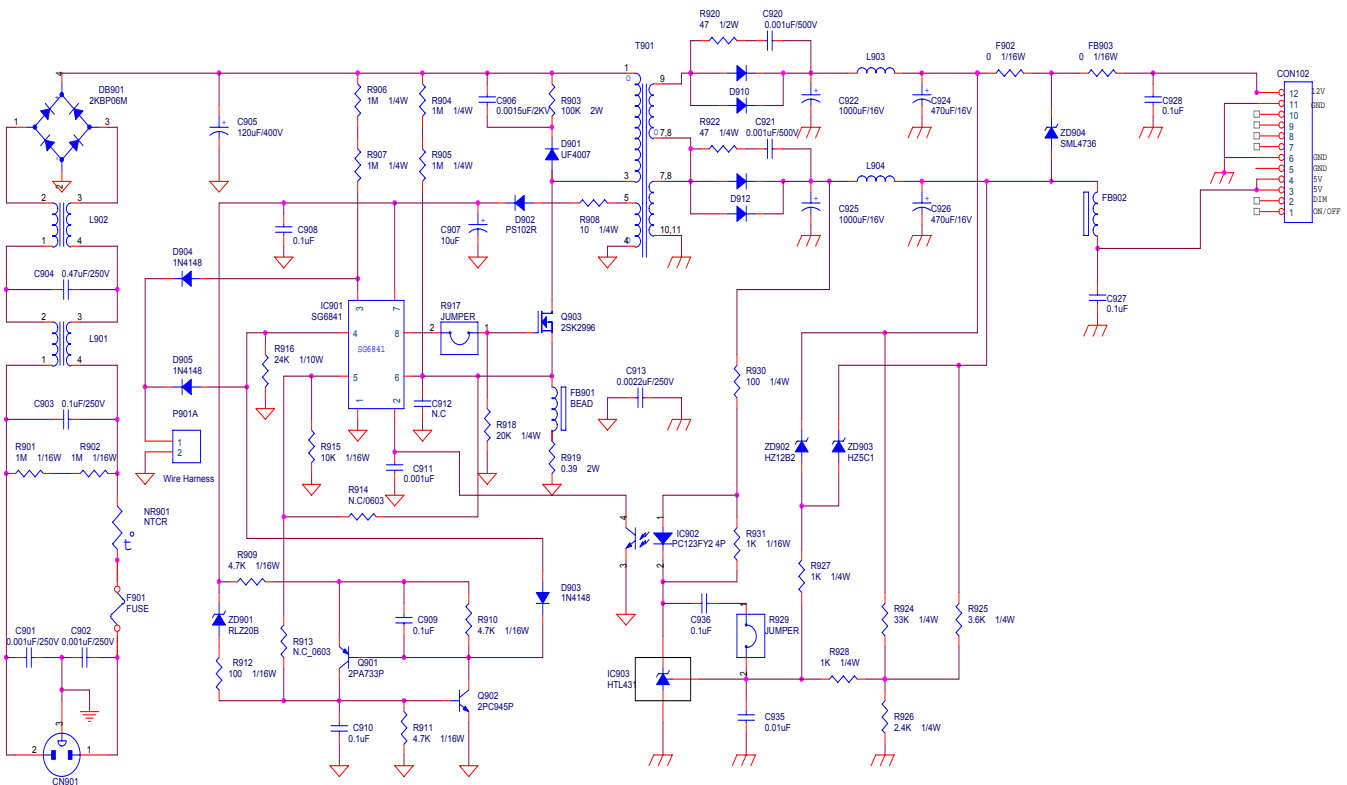


Power Block Diagram

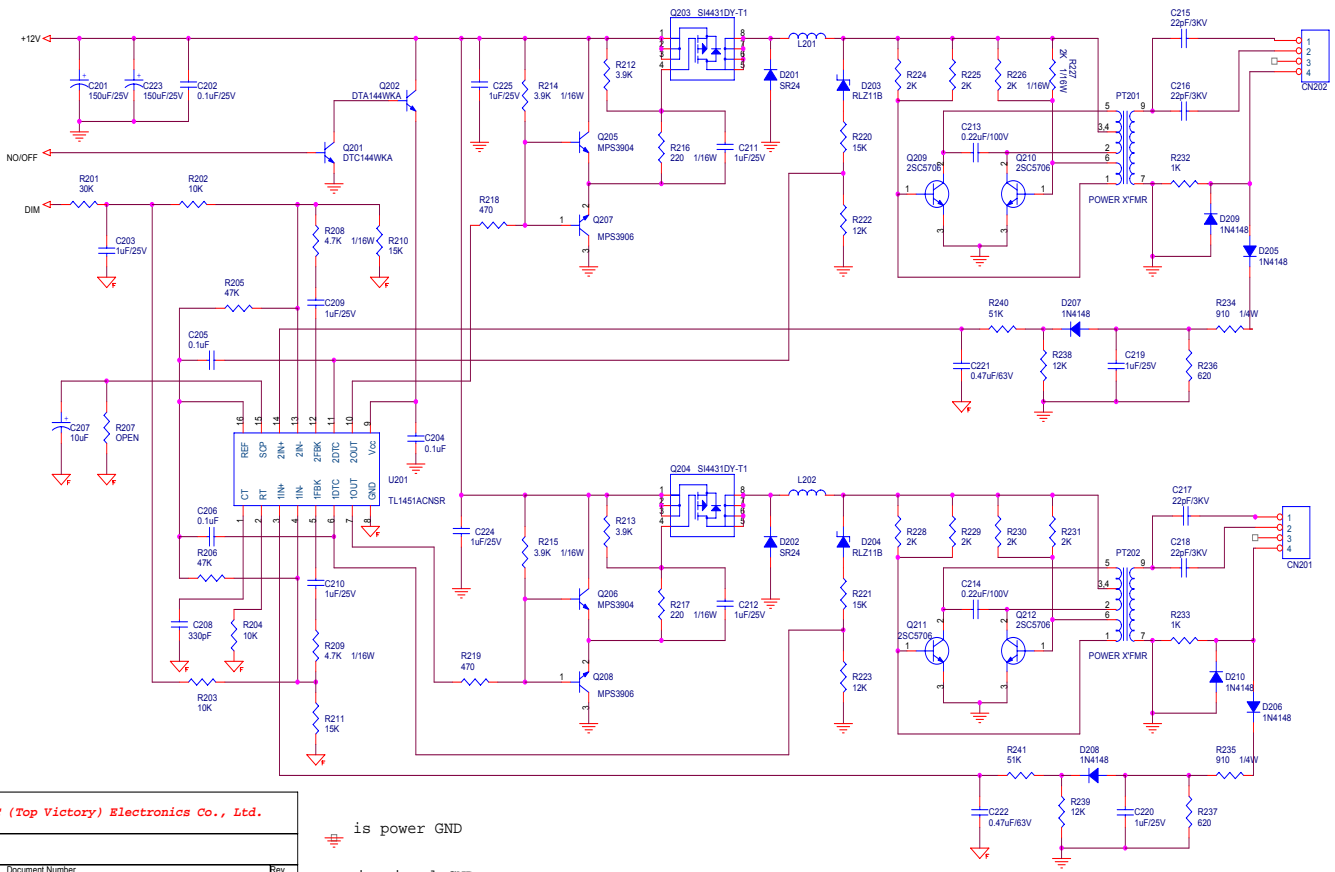




6.2 Inverter/Power Board





<Title>		
Size	Document Number	Rev
B	#N0C742593	1
Date:	Sheet	1 of 2

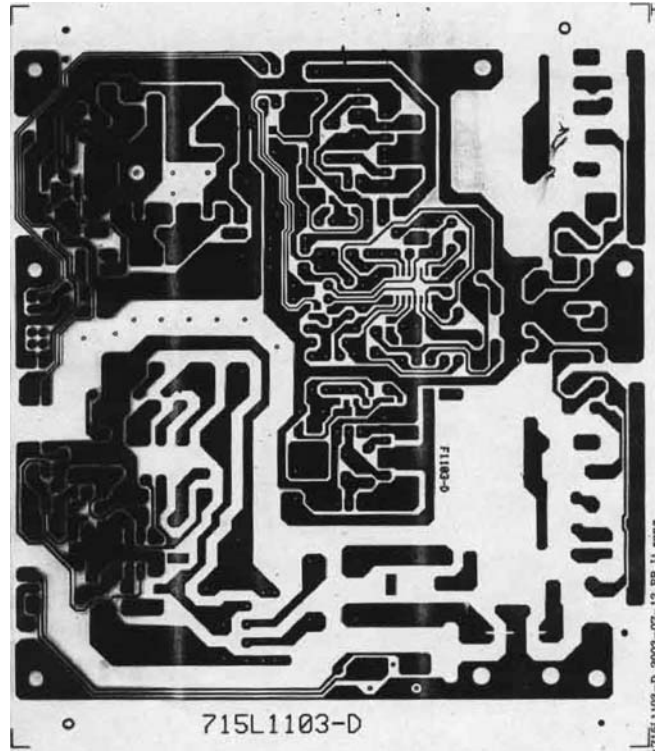
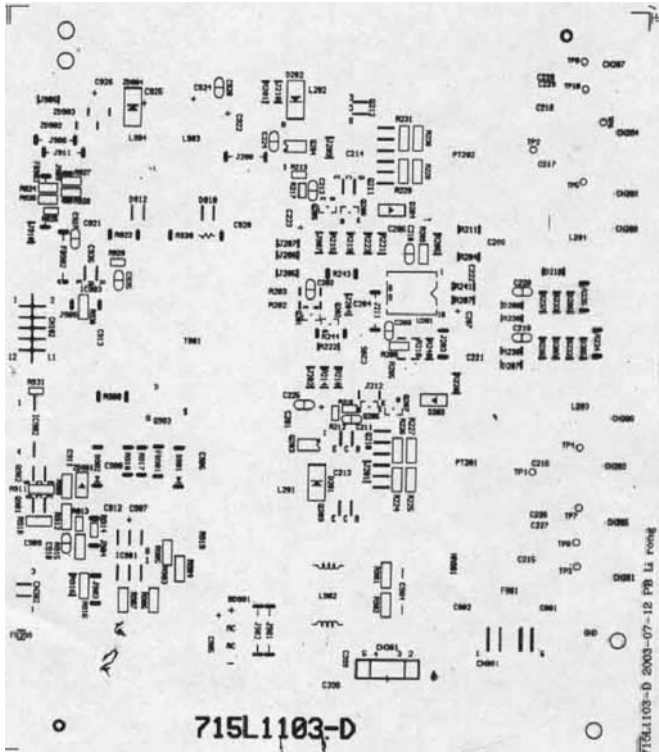


AOC (Top Victory) Electronics Co., Ltd.

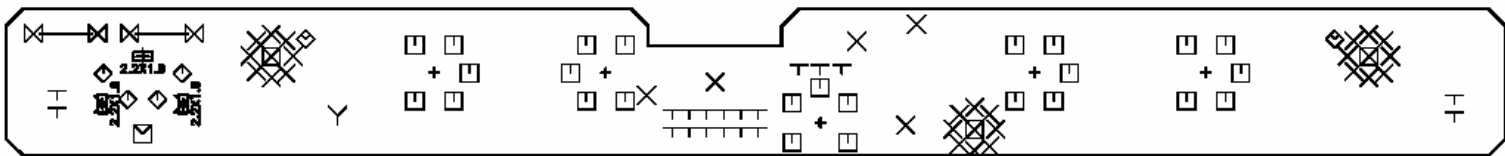
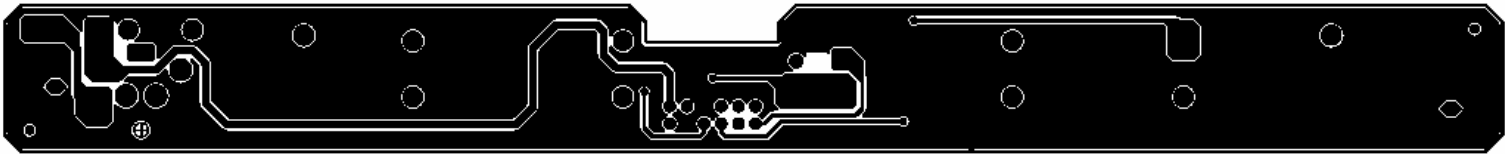
Title		
Size	Document Number	Rev
B		A
Date:	Friday, July 25, 2003	Sheet 2 of 2

 is power GND
 is signal GND

7.2 Inverter/Power Board

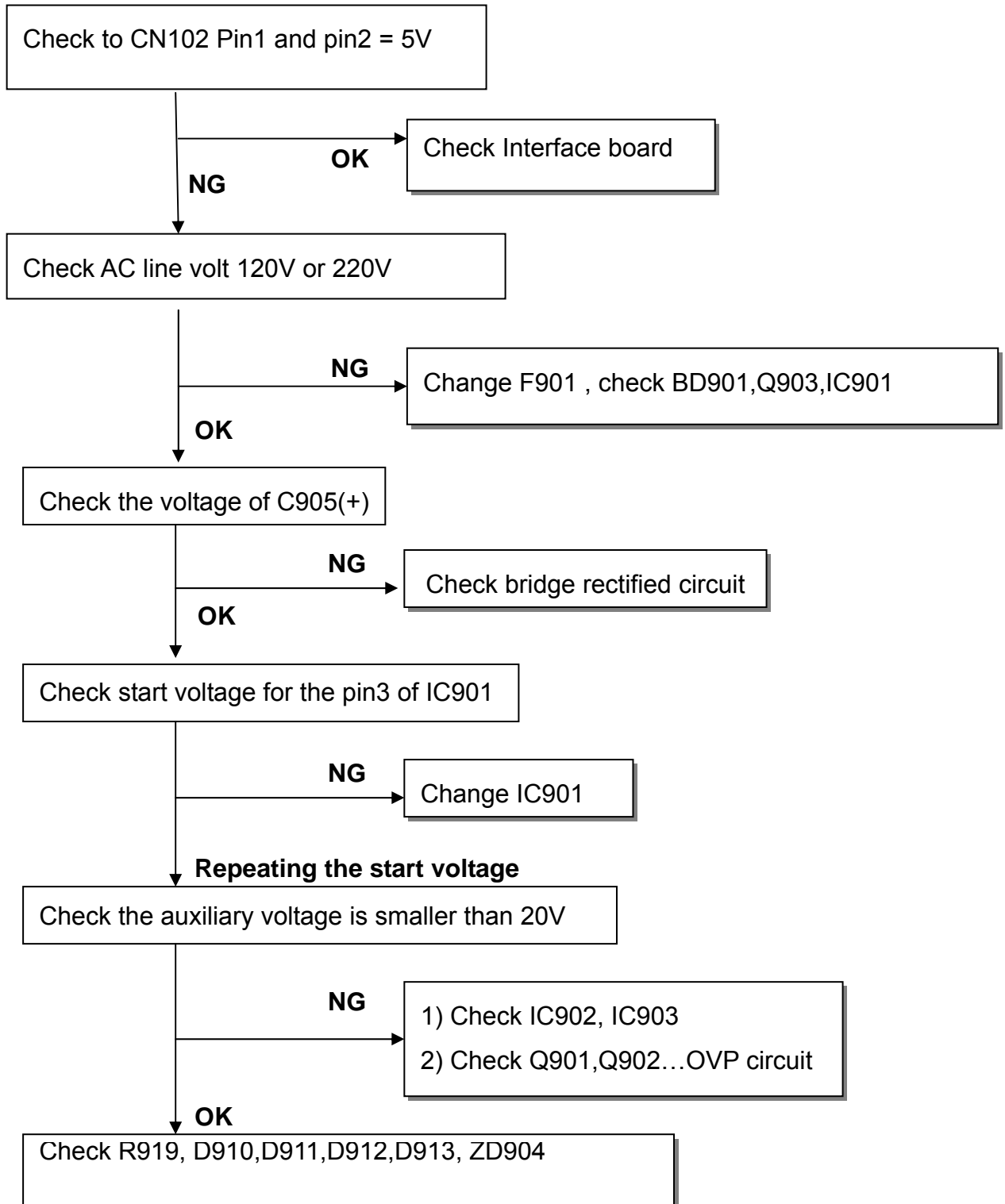


7.3 Keypad Board



8.2.2 Power/Inverter Board

1.) No power



2.) W / LED , No Backlight

