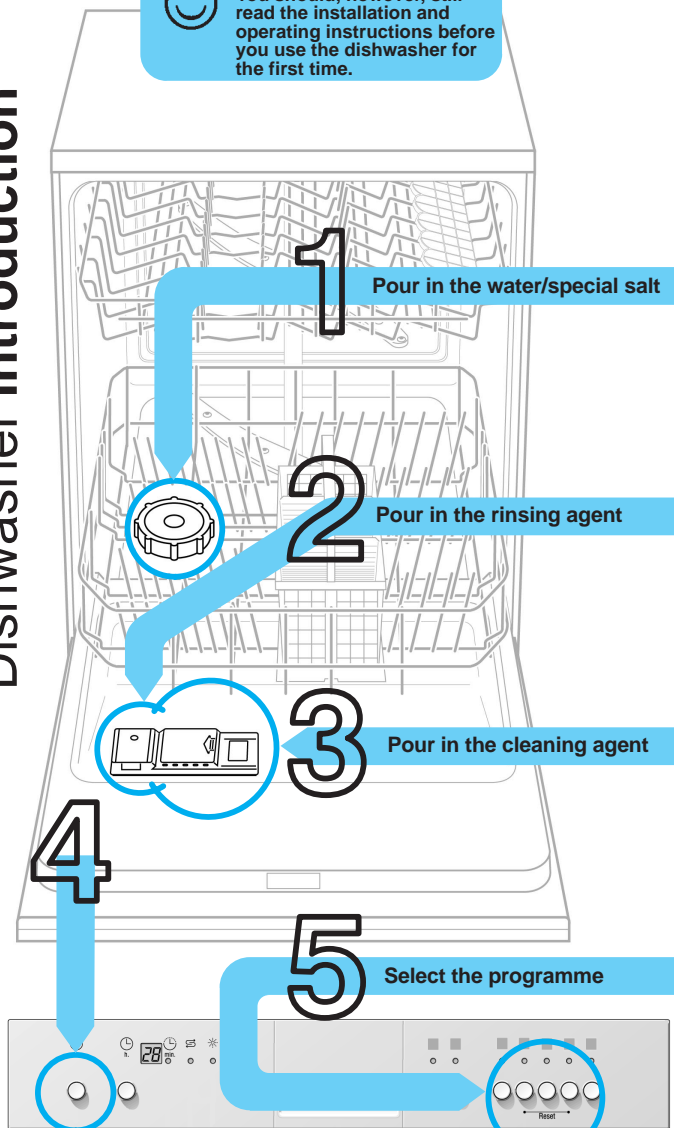




Quick and easy:  
everything you need to know  
about your dishwasher...  
**You should, however, still  
read the installation and  
operating instructions before  
you use the dishwasher for  
the first time.**



**1 Pour in the water/special salt**

**2 Pour in the rinsing agent**

**3 Pour in the cleaning agent**

**5 Select the programme**

**7 Switch on the appliance the dishwasher starts...**

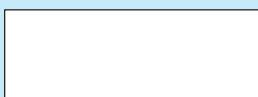
**Switch off the appliance that's it...**

Press the on/off switch when  
the indicator shows 0 (programme end)

## Inserting the water softening system \*

Enter the hardness value ...

ask your  
water supplier



\* only necessary before the first rinse or  
if the water hardness has changed

Read off the setpoint value ...

°dH	°fH	°Clarke	mmol/l	
0 - 3	0 - 6	0 - 4	0 - 0,6	00
4 - 6	7 - 11	5 - 8	0,7 - 1,1	01
7 - 9	12 - 16	9 - 11	1,2 - 1,6	02
10 - 12	17 - 21	12 - 15	1,7 - 2,1	03
13 - 16	22 - 29	16 - 20	2,2 - 2,9	04
17 - 21	30 - 37	21 - 26	3,0 - 3,7	05
22 - 30	38 - 54	27 - 38	3,8 - 5,4	06
31 - 50	55 - 89	39 - 62	5,5 - 8,9	07

Quick procedure ...

and enter it as shown below ...

Press and hold  
the ECO button **+** and the on/off  
button

The ECO indicator lamp  
and the setpoint value 4  
flash

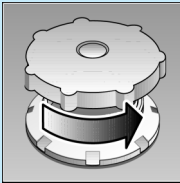
Hold the ECO button until  
the required value appears

The required setpoint  
value appears instead  
of "4"

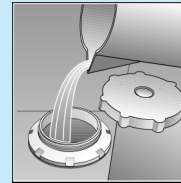
Press the on/off button

The setpoint value  
is stored

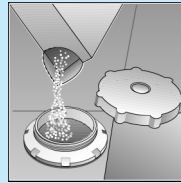
Dissolves limescale (not required for set value 0!)



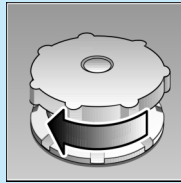
Unscrew  
the lid.



**Only before using  
the dishwasher  
for the first time  
pour approx. 1 l /  
1 1/4 pt water into  
the salt opening.**

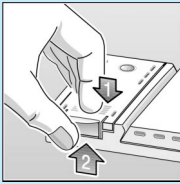


Pour in max.  
1.5 kg / 3 lb 5 oz  
**salt** (never deter-  
gent!)



Screw on the  
lid. Switch on  
dishwasher  
immediately.

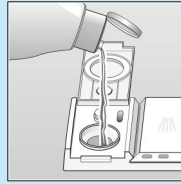
Everything is sparkling clean ...



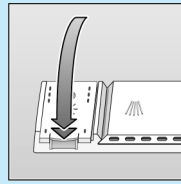
Press mark 1,  
lift up lid 2.



Refill whenever level indicator is light!

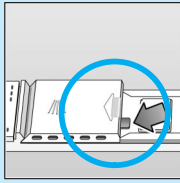


Pour in  
**rinsing aid.**



Close the  
lid. **CLICK!**

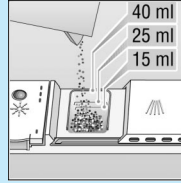
Very dirty dishes, a lot of detergent ...



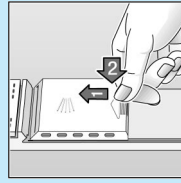
If required, open  
the lid (press the  
pin).



**Warning,**  
combination  
products are not  
suitable for all  
programmes,  
follow manufac-  
turer's instructions.



Pour in  
**detergent.**



Push the lid  
shut, press.  
**PLOP!**

Quick, economical or intensive ...

**Programme overview**

This overview lists the max. possible number of  
programmes. The programmes supplied with your  
appliance are indicated on the fascia.

The programme data are values measured in the  
laboratory in compliance with Standard EN 50242.  
Deviations in practice are possible.

	Intensive 70°	Auto 55° / 65°	Eco 50°	Gentle 40°	Quick 35°	Pre-rinse
Duration in minutes	112	95-145	140	72	30	19
Electricity consumption in kWh	1,60	1,15-1,50	1,05	0,80	0,60	0,10
Water consumption in litres	21	11-19	14	15	10	4
with Aquasensor	18	-	-	12	-	-

## Additional programmes \*\*

Increased flexibility ...



**Soak**  
...crockery in the lower  
basket, programme  
starts automatically,  
remember to add an  
extra 5g of cleaning  
agent when the door  
unlocks.



**Time reduction/  
time saving**  
...shortens the  
cleaning time, reduces  
the drying.



**Upper basket cleaning**  
...Only the crockery in the  
upper basket is cleaned



**Lower basket cleaning**  
...Only the crockery in the  
lower basket is cleaned



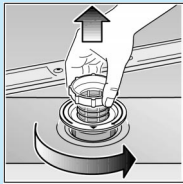
**Time selection**  
...switches on as soon as  
you press the time  
selection button:  
Alters the programme  
start in hourly steps

\*\* on some models

Maintenance and care

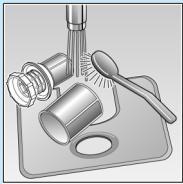
Filters

Check and, if required, clean:

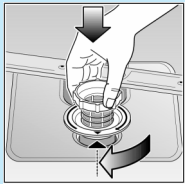


For perfect rinsing results

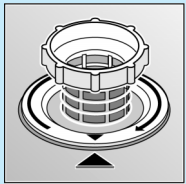
Rotate filter cylinder, remove filter system



Rinse under running water



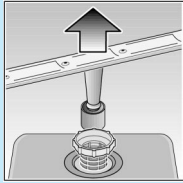
Insert



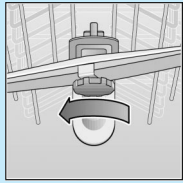
Screw on filter system. NOTE MARK!

Spray arms

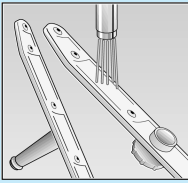
Remove blockages/deposits



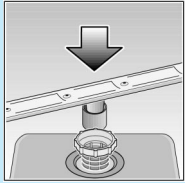
Pull up lower arm



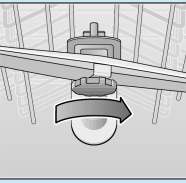
Unscrew upper arm



Clean under running water (if required, use a toothpick)




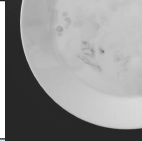

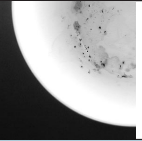
Insert lower arm



Screw on upper arm

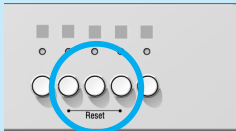
Breakdown and assistance

The correct procedure

Problem	Possible causes	Remedy	Problem	Possible causes	Remedy
Water left in the appliance Appliance not working/ stopst ...	The appliance was opened during the programme ...	Close the appliance and switch it on, or stop the programme (see Stopping the programme).	Plastic parts/crockery discoloured ...	Use a milder cleaning agent ... Too little cleaning agent ...	Use a cleaning agent containing chlorine bleach. Refer to the manufacturer's instructions.
Appliance not working/ stops ...	No / too little water check whether ...	the water supply is turned on. the supply fittings are not obstructed or furred up. the supply hose is not bent.	Milky deposits on the crockery (removable) ...	 Rinsing agent dose too high (streaks visible) ... Rinsing agent dose too low ...	Reduce or increase the dosage according to the instructions.
The crockery is not clean ...	 Crockery is stacked too closely together/on top of each other ... Too little cleaning agent ... Wrong programme ... The spray arms are obstructed	Reload according to the instructions. Refer to the manufacturer's instructions. Select the appropriate programme. Rearrange items causing a blockage (e.g. large spoons).	Glasses cloudy/dull ...	Water too hard ... Glasses not dishwasher-proof ... Unsuitable cleaning agent ...	Refill the special salt/adjust water softening system. Use dishwasher-proof glasses. Use a glass-enhancing cleaning agent.
The crockery in the upper basket is not clean ...	Parts of the programme only work on the lower basket...	Place heavily soiled crockery in the lower basket. Select the <b>soak</b> programme as well.	Rust on the cutlery ...	 Cutlery not rustproof ...	Use dishwasher-proof cutlery.
There are powdery or greasy residues on the crockery ...	 The filter is loose ... The filter is dirty ... The spray arm nozzles are blocked ... Too little water ...	Clean the filter (see above) secure the filter correctly (MARKING). Clean the filter (see above). Clean the spray arms (see above).  See "Appliance is no longer working".	You will find further information in the instructions for use ... you may be able to solve the problem yourself.		

Stopping the programme ...

Press and hold the two reset buttons simultaneously for approximately 3 seconds while the programme is running (RESET)



"0" appears  
The programme will stop after 1 minute

Switch off the appliance.

Loading the dishwasher correctly ...

Arrange dishwasher-proof utensils (having removed any ash, wax, grease, ink, sticky labels; remove, large remnants of jam, dairy products and food) according to the operating instructions and check that the spray arms can rotate freely.