

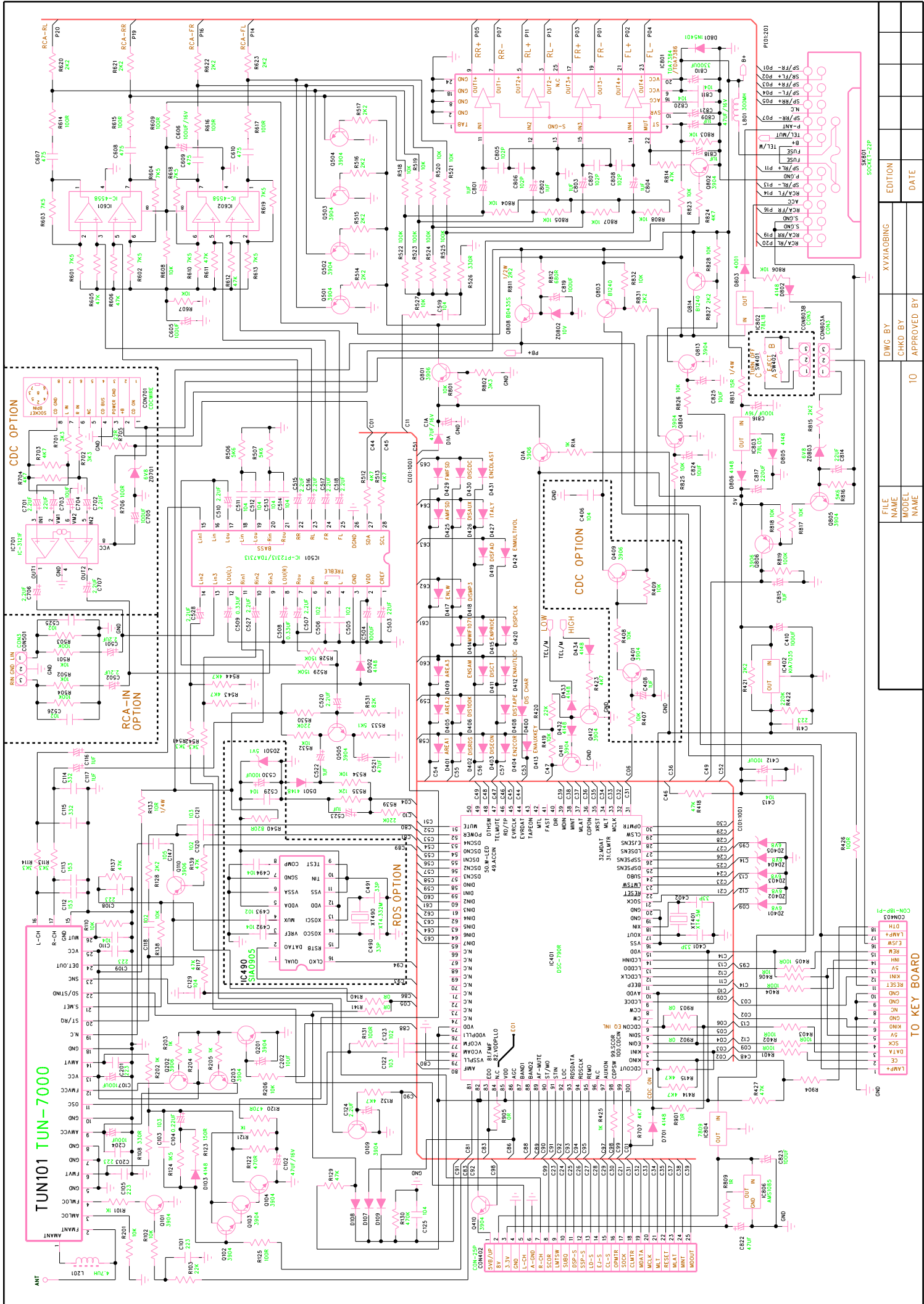


AKAI

CD/MP3-RECIVER

Models:
ACR-46MP
ACR-46MPS

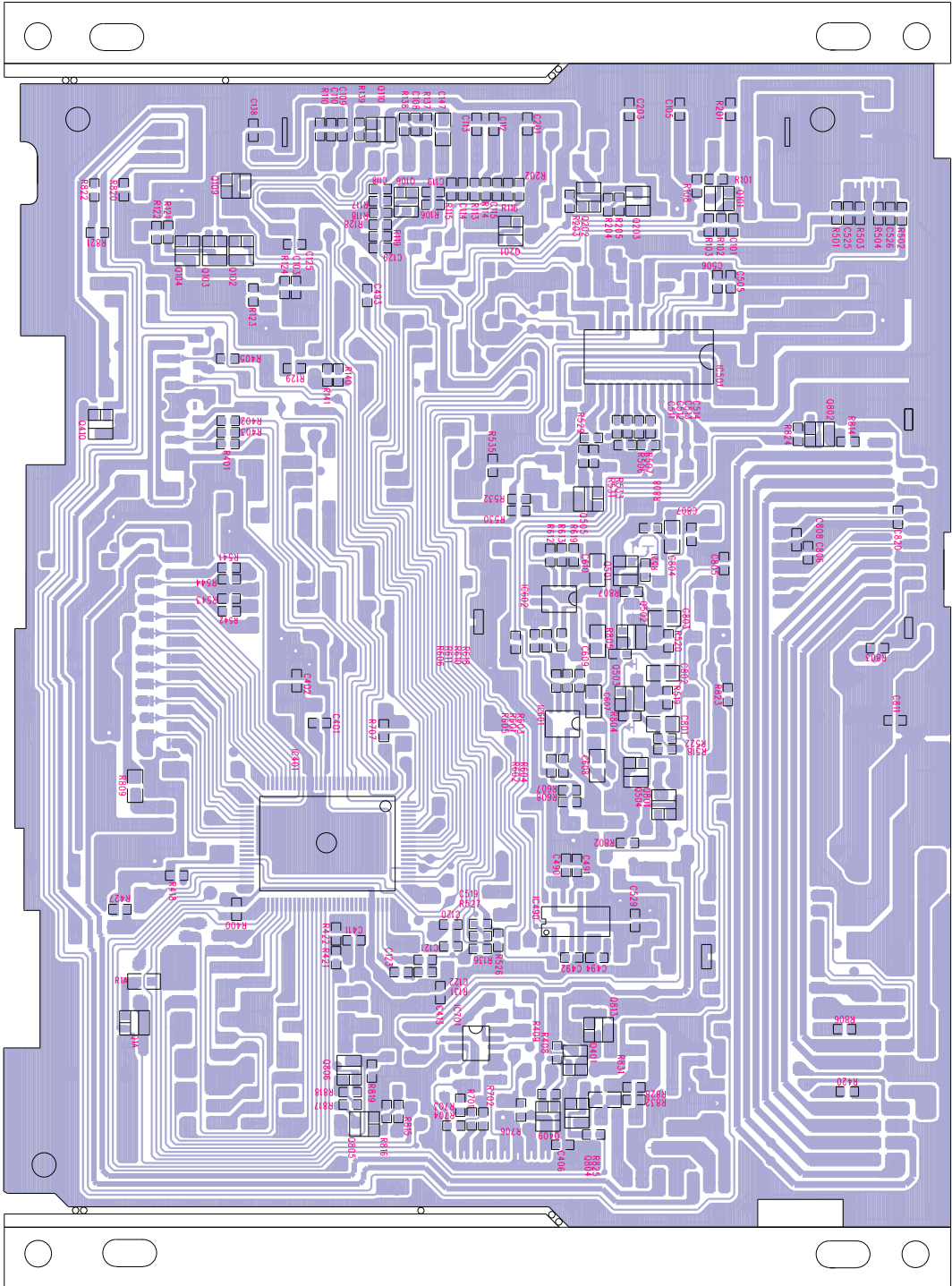
SERVICE MANUAL



FILE NAME	YXKXIAOBING	EDITION	
MODEL NAME		CHKD BY	
DATE		APPROVED BY	
			10

1	ANT	4.7M	L201
2	FRANT	10K	R101
3	FMANT	10K	R101
4	FMANT	10K	R101
5	FMANT	10K	R101
6	FMANT	10K	R101
7	FMANT	10K	R101
8	FMANT	10K	R101
9	FMANT	10K	R101
10	FMANT	10K	R101
11	FMANT	10K	R101
12	FMANT	10K	R101
13	FMANT	10K	R101
14	FMANT	10K	R101
15	FMANT	10K	R101
16	FMANT	10K	R101
17	FMANT	10K	R101
18	FMANT	10K	R101
19	FMANT	10K	R101
20	FMANT	10K	R101
21	FMANT	10K	R101
22	FMANT	10K	R101
23	FMANT	10K	R101
24	FMANT	10K	R101
25	FMANT	10K	R101
26	FMANT	10K	R101
27	FMANT	10K	R101
28	FMANT	10K	R101
29	FMANT	10K	R101
30	FMANT	10K	R101
31	FMANT	10K	R101
32	FMANT	10K	R101
33	FMANT	10K	R101
34	FMANT	10K	R101
35	FMANT	10K	R101
36	FMANT	10K	R101
37	FMANT	10K	R101
38	FMANT	10K	R101
39	FMANT	10K	R101
40	FMANT	10K	R101
41	FMANT	10K	R101
42	FMANT	10K	R101
43	FMANT	10K	R101
44	FMANT	10K	R101
45	FMANT	10K	R101
46	FMANT	10K	R101
47	FMANT	10K	R101
48	FMANT	10K	R101
49	FMANT	10K	R101
50	FMANT	10K	R101
51	FMANT	10K	R101
52	FMANT	10K	R101
53	FMANT	10K	R101
54	FMANT	10K	R101
55	FMANT	10K	R101
56	FMANT	10K	R101
57	FMANT	10K	R101
58	FMANT	10K	R101
59	FMANT	10K	R101
60	FMANT	10K	R101
61	FMANT	10K	R101
62	FMANT	10K	R101
63	FMANT	10K	R101
64	FMANT	10K	R101
65	FMANT	10K	R101
66	FMANT	10K	R101
67	FMANT	10K	R101
68	FMANT	10K	R101
69	FMANT	10K	R101
70	FMANT	10K	R101
71	FMANT	10K	R101
72	FMANT	10K	R101
73	FMANT	10K	R101
74	FMANT	10K	R101
75	FMANT	10K	R101
76	FMANT	10K	R101
77	FMANT	10K	R101
78	FMANT	10K	R101
79	FMANT	10K	R101
80	FMANT	10K	R101
81	FMANT	10K	R101
82	FMANT	10K	R101
83	FMANT	10K	R101
84	FMANT	10K	R101
85	FMANT	10K	R101
86	FMANT	10K	R101
87	FMANT	10K	R101
88	FMANT	10K	R101
89	FMANT	10K	R101
90	FMANT	10K	R101
91	FMANT	10K	R101
92	FMANT	10K	R101
93	FMANT	10K	R101
94	FMANT	10K	R101
95	FMANT	10K	R101
96	FMANT	10K	R101
97	FMANT	10K	R101
98	FMANT	10K	R101
99	FMANT	10K	R101
100	FMANT	10K	R101

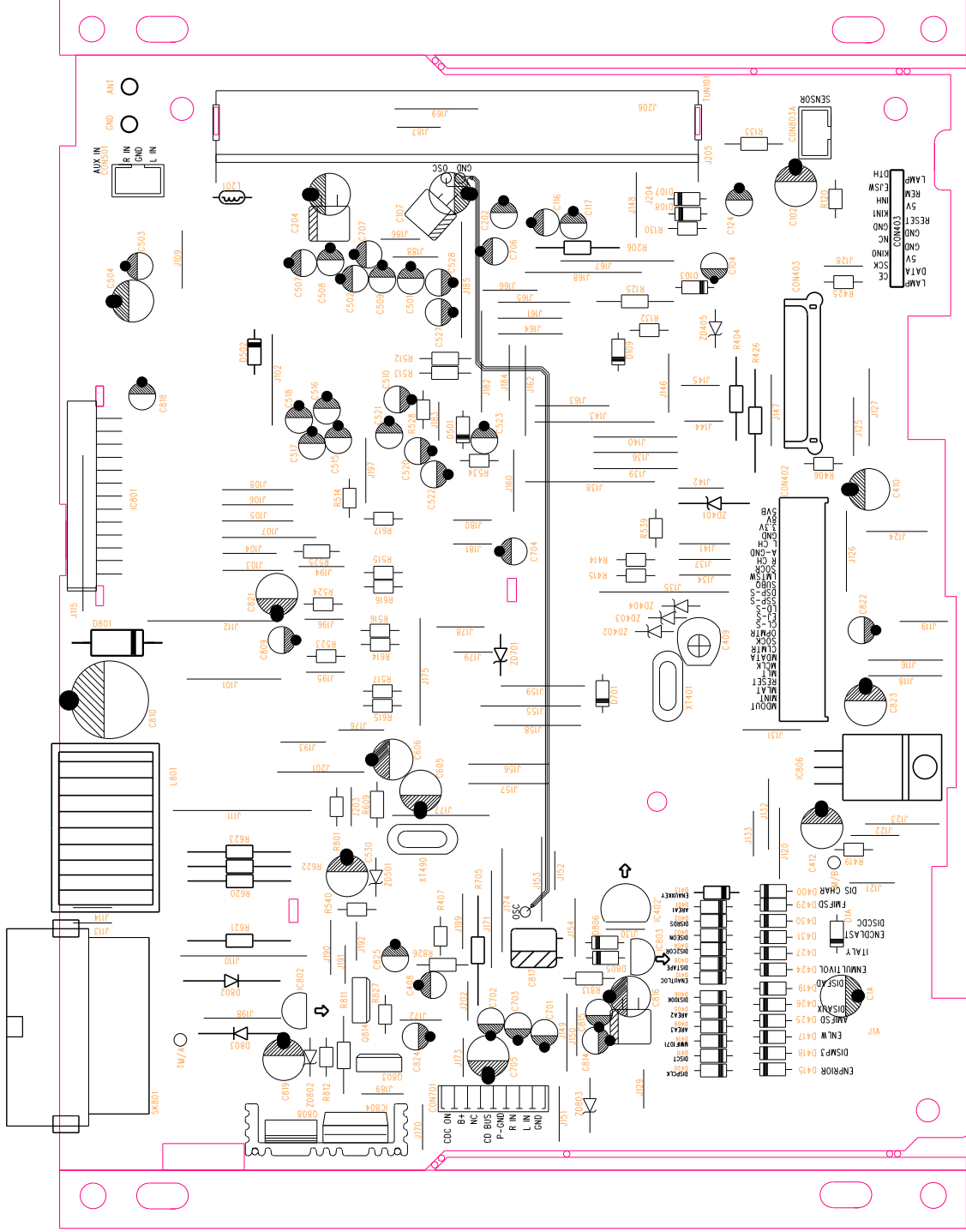
TO KEY BOARD



MATERIAL:		DRAWING	
FILE NAME	94VO 1.6MM	CHECKED BY	
VERSION	1	BY	
DATE	18/11 2003	APPROVED BY	
BLOCK	PAGE		

NO:

A4 SHEET



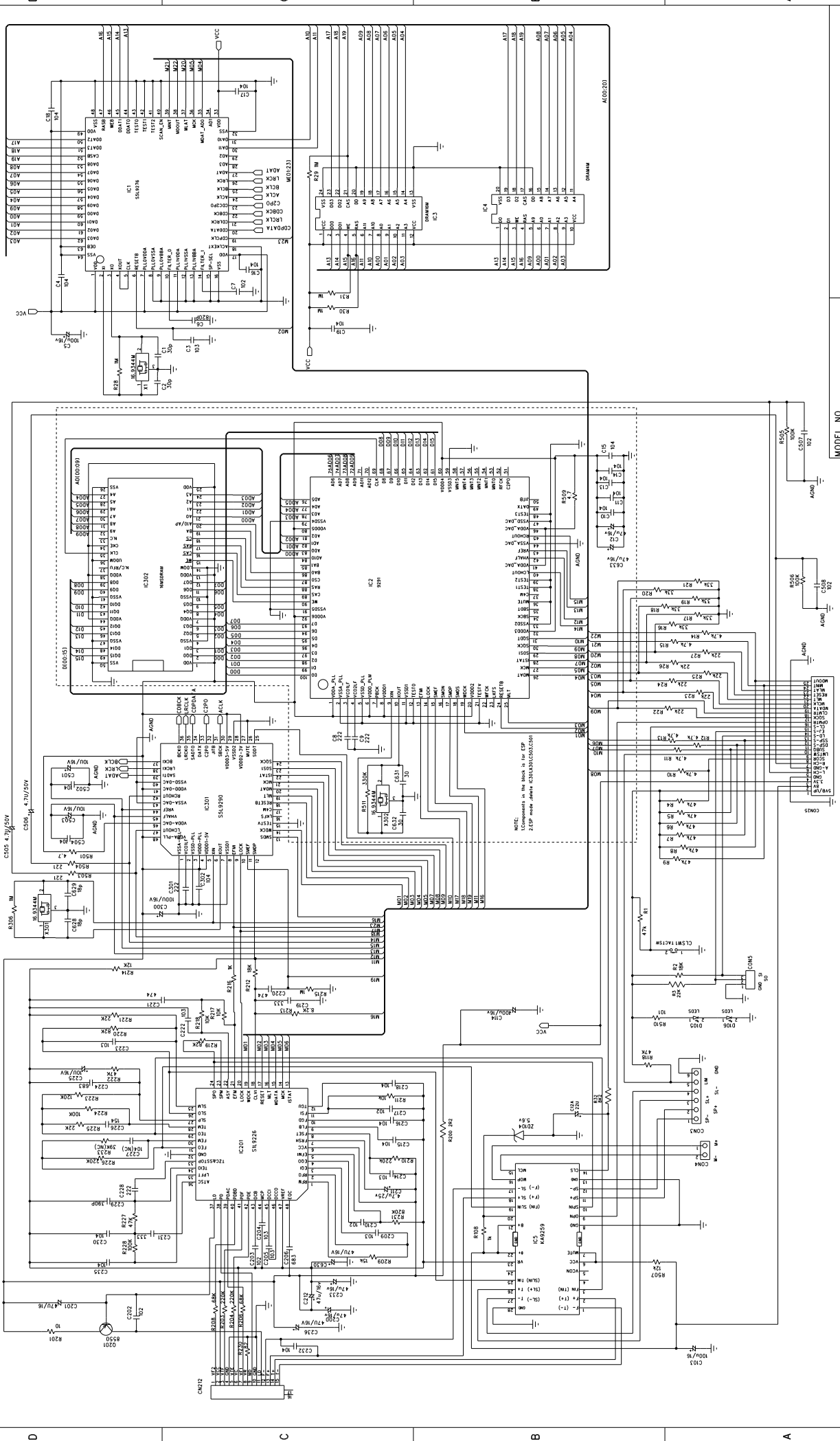
DRAWING BY		MATERIAL: 94VO 1.6MM	
FILE NAME	VERSION 1	DATE 28/11 2003	PAGE
BLOCK			APPROVED BY

SHINWA CL-C01(OPTIONAL)

REVISION: 1.0
SHEET: 1/1
DRAWN BY: []
CHECKED BY: []
APPROVED BY: []

MODEL NO
DESCRIPTION
CD MP3 SERVO

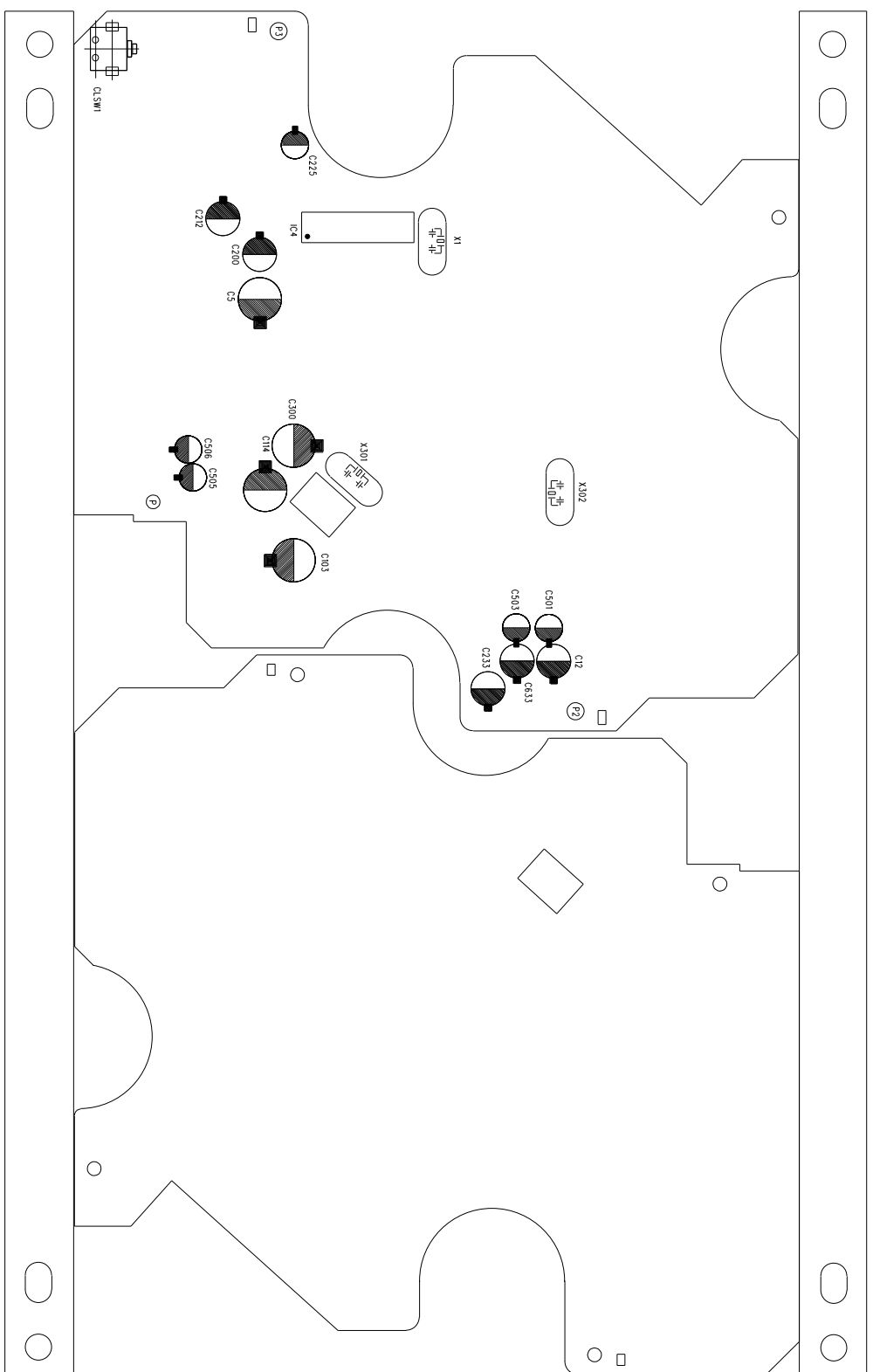
CODE NO



REV.	DESCRIPTION	DATE

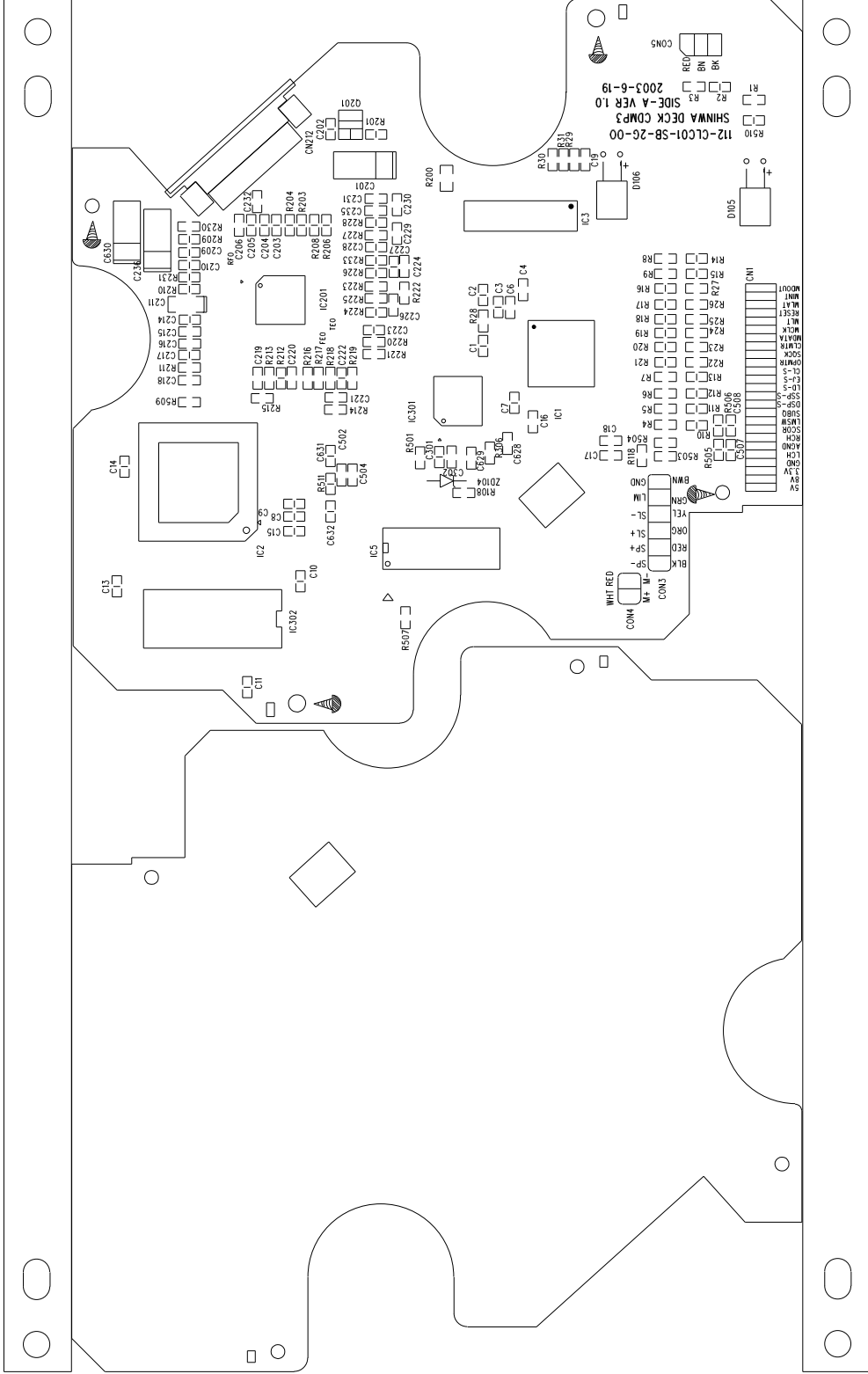
1
2
3
4
5
6

A
B
C
D



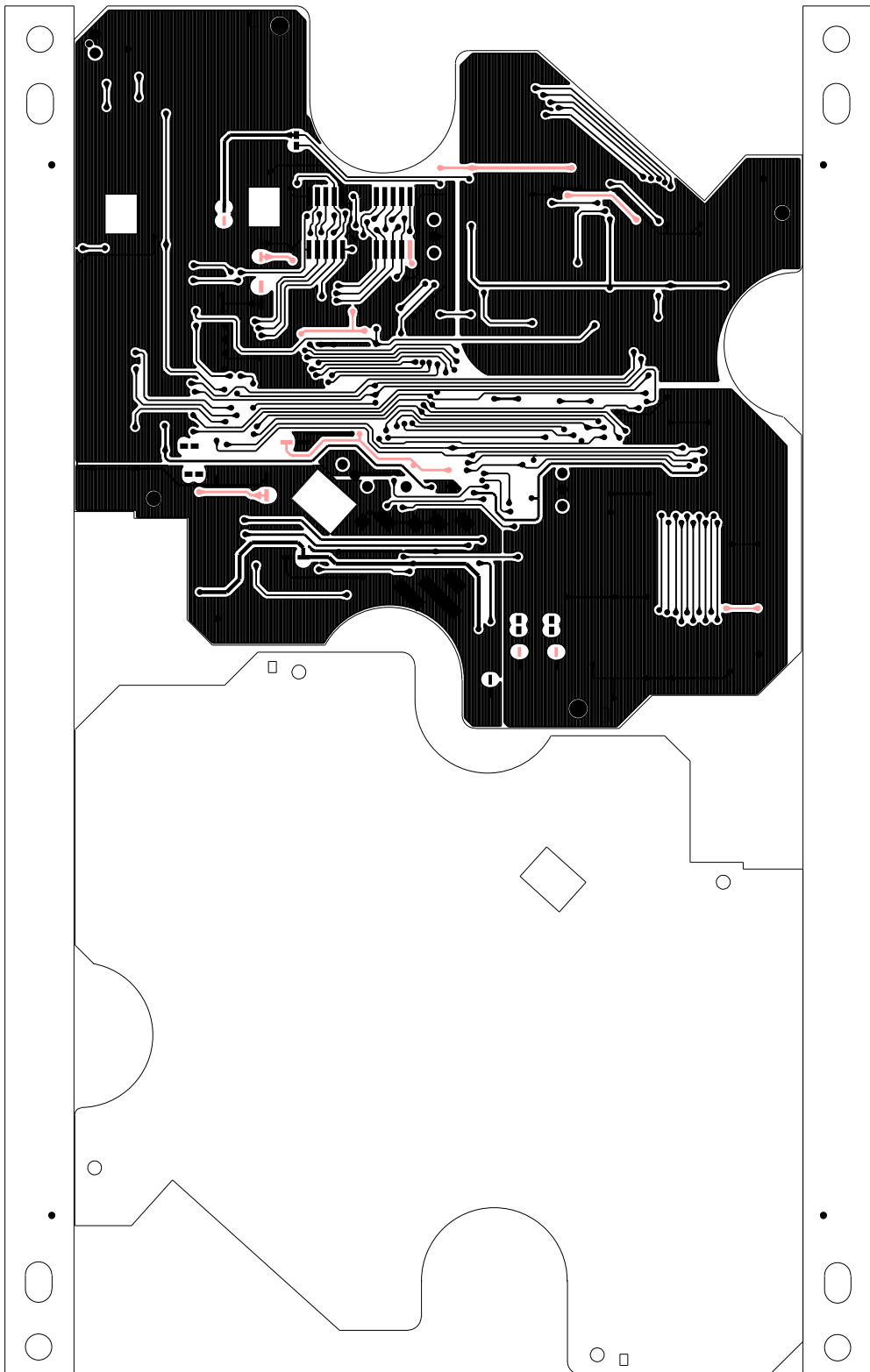
SHINWA CL-C01(OPTIONAL)

FILE NAME		CLC01 SB		MATERIAL: T=1.2MM D/S		DRAWING BY	
BLOCK		PAGE		VERSION		CHECKED BY	
				DATE		APPROVED BY	



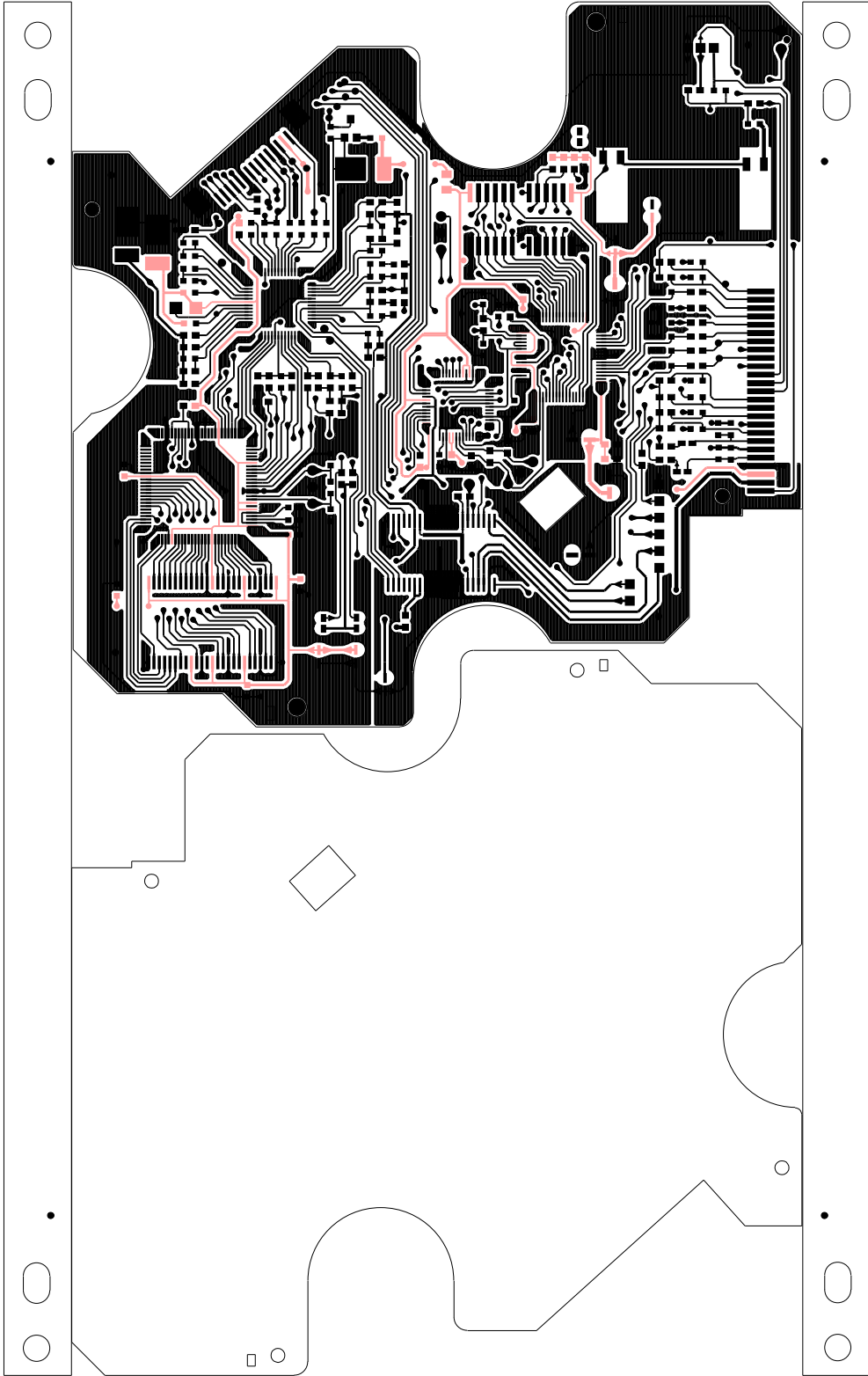
DRAWING BY		MATERIAL: T=1.2MM D/S	
CHECKED BY		VERSION	
APPROVED BY		DATE	
FILE NAME	CLC01 SB	BLOCK	PAGE

SHINWA CL-C01(OPTIONAL)



SHINWA CL-C01(OPTIONAL)

FILE NAME	CLC01 SB	MATERIAL: T=1.2MM D/S	DRAWING BY
BLOCK	PAGE	VERSION	CHECKED BY
		DATE	APPROVED BY



FILE NAME		CLC01 SB		DRAWING BY	
BLOCK		PAGE		CHECKED BY	
				APPROVED BY	
		MATERIAL: T=1.2MM D/S			
		VERSION			
		DATE			

SHINWA CL-C01(OPTIONAL)
0903/2004/2207/1008

AKAI ACR-46MP

ITEM	PARTS NO.	DESCRIPTION-2	LOCATION	PRICE	REMARK
1	83-CM110-SB01-A	CM110B-CD Deck			
2	83-CM203-MB08-B	CM203 2×2V RDS			
3	84-CM203-KB06-A	CM203A-SCE-RDS			
4	84-CM203-SA00-A	CM203			
5	84-RMT203-0022-0	RDS NEW FORYOU REM			
6	11-0901-0075-A	IC TDA7384	IC801		
7	11-1500-0002-A	XT 4.500MHZ (-20°C~+70°C) HC	XT401		
8	11-1500-0004-A	XT 16.9344MHZ (-20°C~+70°C)	X1		
9	11-1500-0010-A	CRYSTAL 4.332MHZ DIP W/18PF	XT490		
10	11-2701-0001-A	FM/AM TUNER(CET-7000AFL)	TUN101		
11	11-3501-0008-B	CD DECK CL-C01 SHINWA VER.B			
12	13-0706-0001-0	RIM FOR 203A (BIG)			
13	15-0700-0001-A	PANEL BOX FOR CMV100			
14	11-3101-0020-0	20PIN PWR/SPK EST-KNT-20-04	SK801		
15	11-3101-0014-0	20PIN PWR/SPK EST-KNT-20-05			
16	11-0321-0005-0	CHOKE INDUCTOR 470μH□CM203)	L801		
17	11-0311-4R70-0	COIL 4.7μH 3X5MM	L201		
18	11-0402-4148-A	DIODE IN4148 1/2W	D1A,D103,D107~109,D401,D404~405,D408,D414,D420,D429~430,D425,D501~502,D802,D805~		
19	11-0406-0005-0	LED 2.2V 10MA GREEN SMT 0603	LED102~103,LED106~117,LED119~120		
20	11-0406-0007-0	LED 3.5V 20MA BLUE SMT 0603	LED101,LED104~105		
21	11-0406-0011-0	PHOTOTRANSISTOR IR928-6C	D105.D106		
22	11-0421-0001-0	REMOTE-CRM HEADER(IRM2038F4)	REM1		
23	11-0501-0001-A	TR DTC343TK(SMT SOT-23)	Q501~504		
24	11-0501-0001-A	TR DTC343TK(SMT SOT-23)	Q102~104		
25	11-0501-0002-A	TR 3904(SMT SOT-23)NPN	Q101~4,Q109,Q201,Q203,Q410,Q505,Q802,Q804~5,Q813		
26	11-0501-0003-A	TR 3906(SMT SOT-23)PNP	Q202,Q806,Q801,Q110,Q1A		
27	11-0501-0003-A	TR 3906(SMT SOT-23)PNP	Q201		
28	11-0501-0009-0	TR S8050 SMT SOT-23	RQ1		
29	11-0512-0011-A	T.R.BD435S SAMSUNG	Q808		

30	11-0522-0001-A	TR B1243 POWER SWITCH	Q803,Q814		
31	11-0901-0002-A	IC DRAM 4MX4 TSOP 3.3V	IC3		
32	11-0901-0003-A	IC.S1L9226	IC201		
33	11-0901-0004-A	IC.KA9259D	IC5		
34	11-0901-0005-A	IC S5L9276	IC1		
35	11-0901-0006-A	IC.S5L9290	IC301		
36	11-0901-0011-A	IC.PT2313L SO-28	IC501		
37	11-0901-0016-A	IC.KIA7035AF TO-92	IC402		
38	11-0901-0024-0	IC 78L05 REGULATOR ST	IC803		
39	11-0901-0026-A	IC 78L18 REGULATOR ST	IC802		
40	11-0901-0032-B	IC.DSC-790R	IC401		
41	11-0901-0036-0	IC.AMS1085CT-3V3 TO-220	IC806		
42	11-0901-0038-A	IC BU1924 RDS DEMODULATOR	IC490		
43	11-0901-0055-A	IC L7809 REGULATOR ST	IC804		
44	11-0901-0059-A	IC LC75823E LCD DRIVE	IC101		
45	11-0901-0063-A	IC MC 4558 SOP-8	IC601~602		
46	11-0901-0092-0	IC SC6121 SOP20	IC1		
47	11-1500-0012-0	CER RESONATOR 455KHZ	RCT1		
48	11-1841-0061-0	PCB CM203 FB FLEX FPC			
49	11-2001-0010-1	CD310 DETECTOR (GAODY) 2PIN	EJSW		
50	11-2011-0002-0	KEY SWITCH 4.3MM	SW101~118		
51	11-2011-0005-A	CD DETECTOR CDX100	CLSW1		
52	11-2101-0001-0	15A DIN FUSE			
53	11-2501-0002-0	ANT SOCKET W/GND L=230MM	ANT		
54	11-2511-0001-0	INFRARED LED 3MM	RD1		
55	11-2602-0002-0	CM203 LCD TCM3620 MASK TN NEGATIVE	LCD101		
56	11-3101-0012-0	P=2.0MM 3PIN WAFER	CON803A		
57	11-3101-0013-A	18PIN SOCKET MALE DTC-P1803	CN101		
58	11-3102-0010-0	3PIN FLAT CABLE COLOR P=2.0	SOLDER IN SENSOR PCB		
59	11-3102-0020-A	18PIN SOCKET FEMALE DTC-R1803			
60	11-3111-0003-A	18PIN FPC SOCKET 1.0	CON403		
61	11-3111-0004-A	15PIN FPC SOCKET PITCH=1.0MM	CN212		
62	11-3111-0007-0	25PIN FPC SOCKET 1.25	CON402		
63	11-3300-0602-0	LCD BACKLIGHT FOR CM203	LED118		

64	11-3400-0003-0	ZEBRA STRIP FOR CM203			
65	13-0106-0701-0	PANEL-FRONT FOR 203 SILVER			
66	13-0206-0001-1	PANEL BACK FOR 203			
67	13-0206-0003-1	COVER ROTATE BRACKET			
68	13-0206-0004-1	TRAY COVER FOR 203			
69	13-0206-0005-0	BOTTOM COVER ABS FOR RMT203			
70	13-0406-0813-0	LENS CM203 SCE/RDS NEW FORYOU			
71	13-0506-0001-0	KNOB-SELECT FOR 203 NATVRAL			
72	13-0506-0002-1	KNOB-S-OPEN FOR 203 NATVRAL			
73	13-0506-0003-0	KNOB-OPEN FOR 203 NATVRAL			
74	13-0506-0801-0	KNOB-EJECT FOR 203 BLACK			
75	13-0506-0802-0	KNOB-PWR-SRC FOR 203 BLACK			
76	13-0506-0803-0	KNOB-NUMBER FOR 203 BLACK			
77	13-0506-0804-0	KNOB-SEEK FOR 203 IN BLACK			
78	13-0706-0501-0	TRIM-RIM FOR 203			
79	13-0706-0502-0	RING-WING FOR 203			
80	13-0806-0002-0	HOOK SIDE FOR 203	HOOK SIDE FOR 203		
81	13-0806-0003-1	HOOK FRONT FOR 203			
82	13-0806-0006-1	E SENSOR SWITCH BRACKET 203			
83	13-0809-0001-0	LOCKER FOR CM310			
84	13-0809-0002-1	PUSH FOR CM310			
85	13-0906-0001-0	REFECTOR FOR 203			
86	13-1106-0001-A	GEAR FOR 203			
87	13-1106-0002-A	DAMPER FOR 203			
88	13-2300-0001-0	ISOLATOR STEP WASHER			
89	13-2300-0002-0	E-WASHER FOR 203			
90	14-0106-0001-0	SHUTOUT-SHEET FOR 203			
91	14-0106-0003-0	HOLD-SEEK FOR 203			
92	14-0107-0001-0	WASHER-22-025MM FOR 206			
93	14-0206-0001-0	SPRING FOR SLIDE DOWN FOR 203			
94	14-0206-0002-0	SPRING FPC SHAFT FOR 203			
95	14-0206-0003-0	SPRING SENSOR SWITCH BRACKET			
96	14-0206-0004-0	SPRING SIDE LOCK FOR 203			
97	14-0206-0005-0	SPRING-S-OPEN FOR 203			

98	14-0206-0006-0	SPRING-OPEN FOR 203			
99	14-0209-0001-0	LOCKER SPRING FOR CM310			
100	14-0306-0002-A	LCD-COVER FOR 203			
101	14-0306-0003-A	SHAFT-ARM FOR 203			
102	14-0306-0004-A	SIDE-GUIDE-BRACKET FOR 203 R			
103	14-0306-0005-A	SIDE-GUIDE-BRACKET(L) FOR 203			
104	14-0306-0006-A	ROTATE-MOUNT-BRACKET FOR 203			
105	14-0306-0008-A	LOCK BRACKET FOR 203			
106	14-0306-0009-A	DECK SUPPORT BRACKE KOMEK 203			
107	14-0306-0010-A	BRACKET FOR AMP IC FOR 203			
108	14-0306-0012-C	TRAY FOR FRONT PANEL			
109	14-0306-0013-B	PANEL LOCKET FOR 203			
110	14-0306-0014-C	BRACKET SOCKET FOR 203			
111	14-0309-0001-0	REAR BRACKET FOR KOMEK CM310			
112	14-0406-0001-B	FRAME FOR 203			
113	14-0506-0001-C	TOP COVER			
114	14-0606-0001-0	SHORT SHEET FOR CM203			
115	14-0706-0001-0	FPC SHAFT FOR 203			
116	14-0706-0002-1	ROTATE SHAPE R FOR 203			
117	14-0706-0003-1	ROTATE SHAPE L FOR 203			
118	14-0906-0002-1	HEATSINK			
119	14-0907-0002-A	HEATSINK IC 7809&BD435 FOR 206			
120	14-2106-0001-0	GEAR SECTION FOR CD203			
121	14-2906-0003-0	SIDE LOCK PIN			
122	14-2909-0001-0	PANEL LOCATED PIN FOR CM310			
123	16-0100-0013-0	25PIN FFC 1.25MM L=100MM	CN1		