

TROUBLESHOOTING USING LED AND OSD

1. Display

(1) OSD

Three kinds of error messages are displayed on the screen, and the power is turned off 10 sec later.

(2) LED

LED error is displayed continuously after the power is turned off.

2. Error types and check points

(1) OSD

On screen display	Cause	Check point
ERROR MESSAGE CONDITION 1	Fan protector operated	<ul style="list-style-type: none"> ● Fan ● Main power PCB ● Main/Digital PCB
ERROR MESSAGE CONDITION 2	Temperature protector operated	<ul style="list-style-type: none"> ● Ambient temperature of unit ● Main/Digital PCB ● Temp. sensor IC757

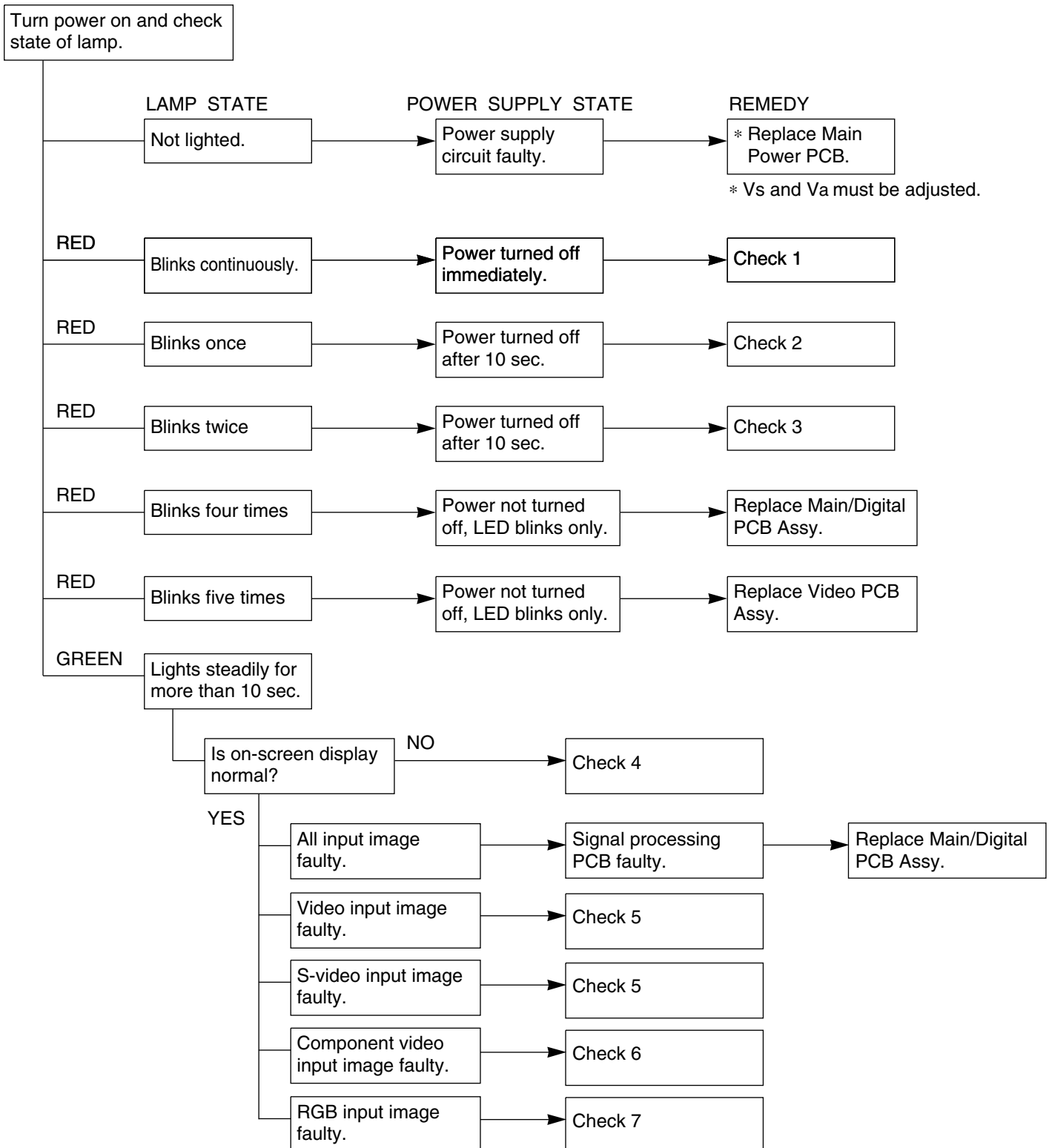
(2) LED

LED lamp display status	Cause	Check point
Steady light (Red)	Stand-by status	—
Continuous Flashes continuously (Red)	No power Power supply protector operated	<ul style="list-style-type: none"> ● Main power PCB ● PDP panel
1 time Flashes once every 4 sec. (Red)	Fan protector operated	<ul style="list-style-type: none"> ● Fan ● Main power PCB ● Main/Digital PCB
2 times Flashes twice every 5 sec. (Red)	Temperature protector operated	<ul style="list-style-type: none"> ● Ambient temperature of unit ● Temperature sensor IC757 ● Main/Digital PCB
4 times Flashes four times every 7 sec. (Red)	Main/Digital circuit faulty	<ul style="list-style-type: none"> ● Main/Digital PCB
5 times Flashes five times every 8 sec. (Red)	Video circuit faulty	<ul style="list-style-type: none"> ● Video PCB Assy

TROUBLESHOOTING FLOWCHART

LED lamp blinking

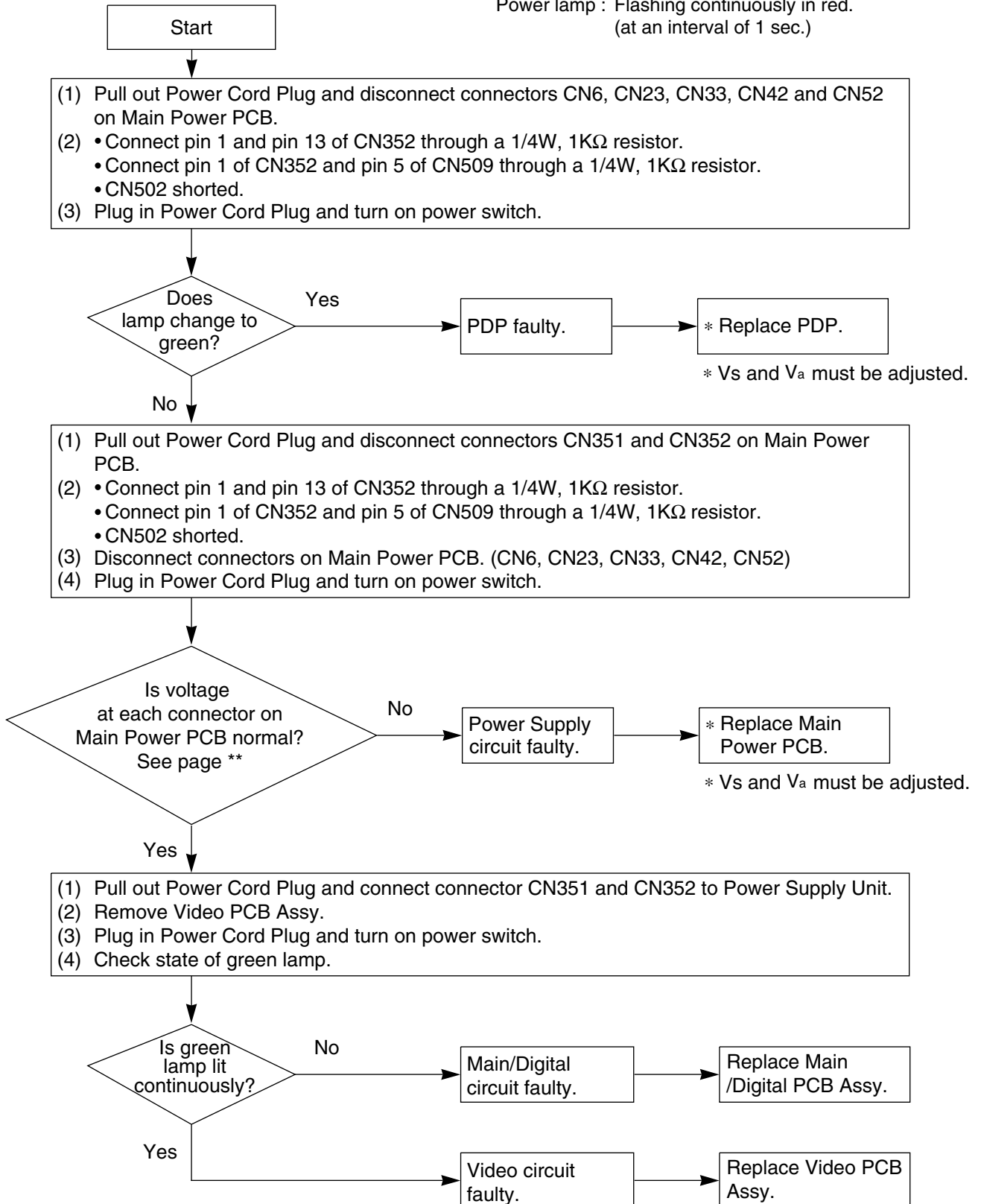
- Note : 1. Since a voltage is applied to the Main Power PCB heat sinks while the set is operating, do not touch the heat sinks.
 2. If the Main Power PCB insulation sheet is not installed when assembling, the Main Power PCB fuse will blow.



Check 1

Power supply protector operated

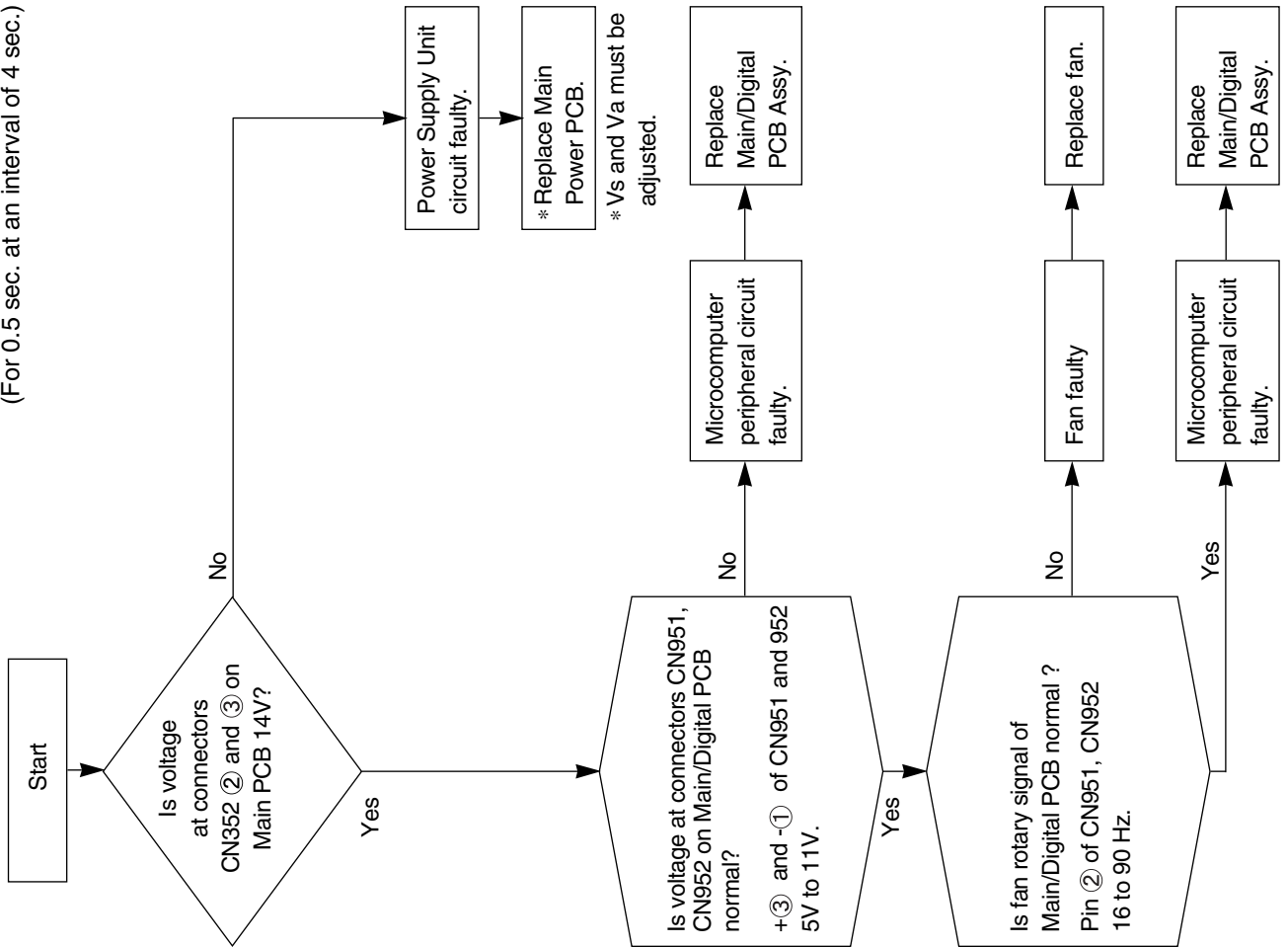
Power lamp : Flashing continuously in red.
(at an interval of 1 sec.)



Check 2

Fan protector operated

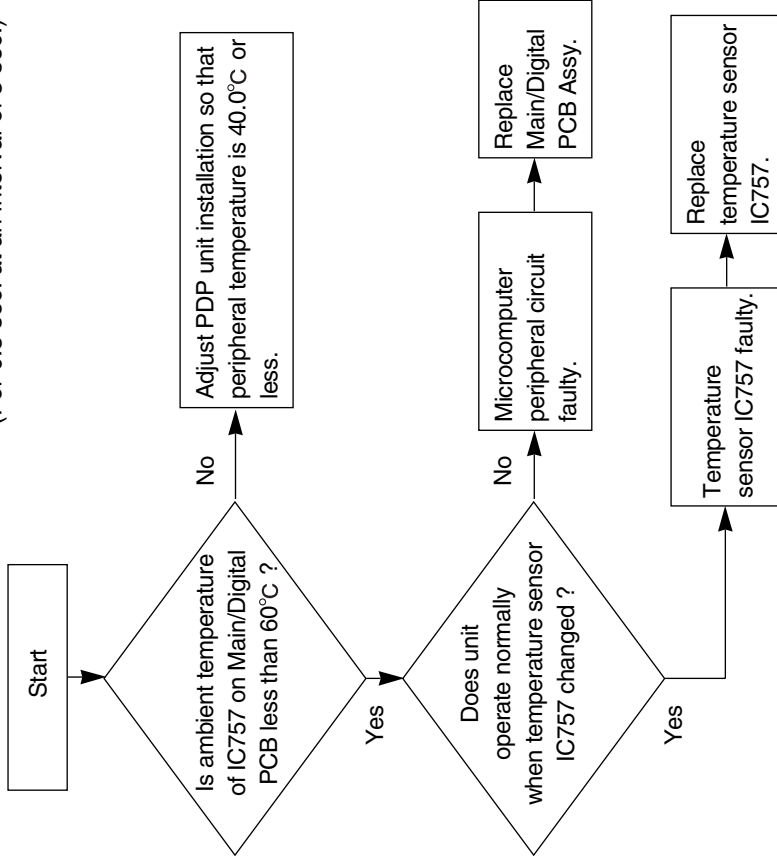
Power lamp: Flashes once intermittently in red.
(For 0.5 sec. at an interval of 4 sec.)



Check 3

Temperature protector operated

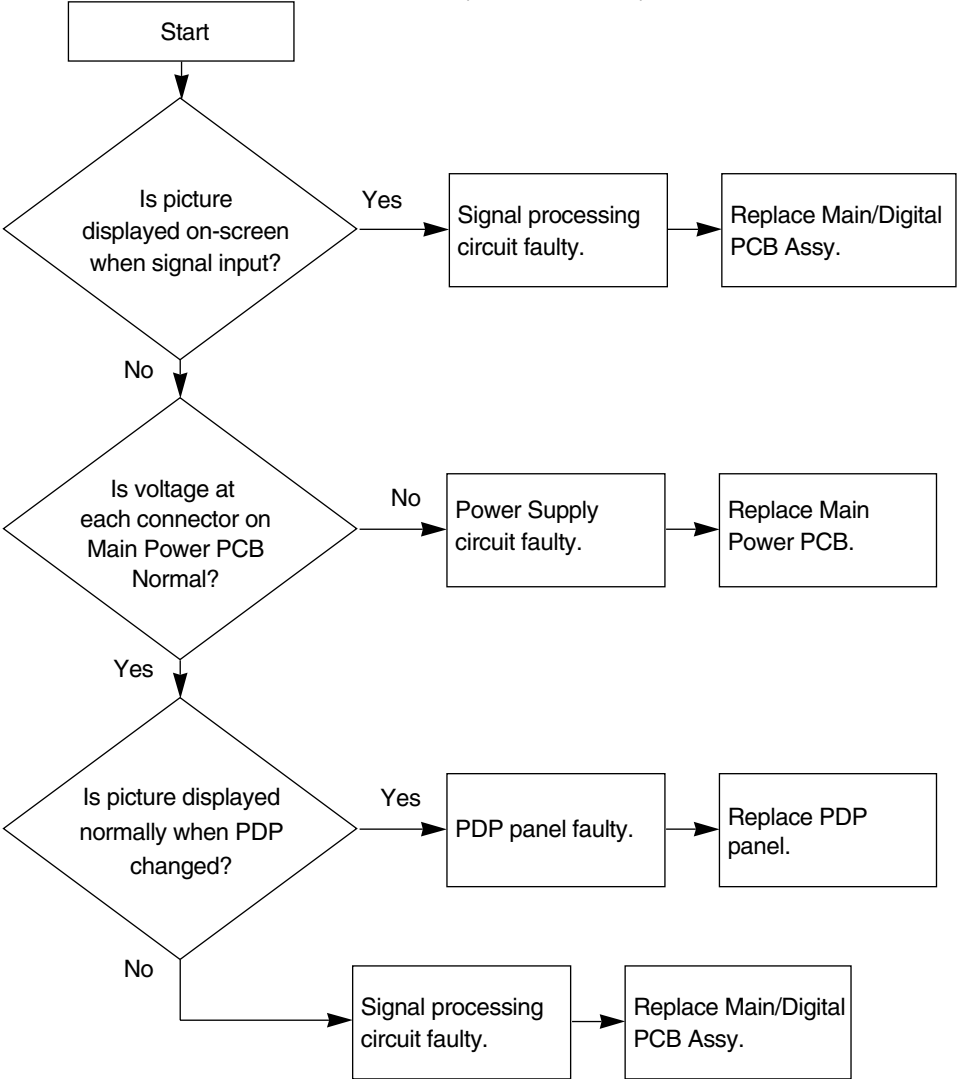
Power lamp : Flashes intermittently twice in red.
(For 0.5 sec. at an interval of 5 sec.)



Check 4

OSD is not displayed

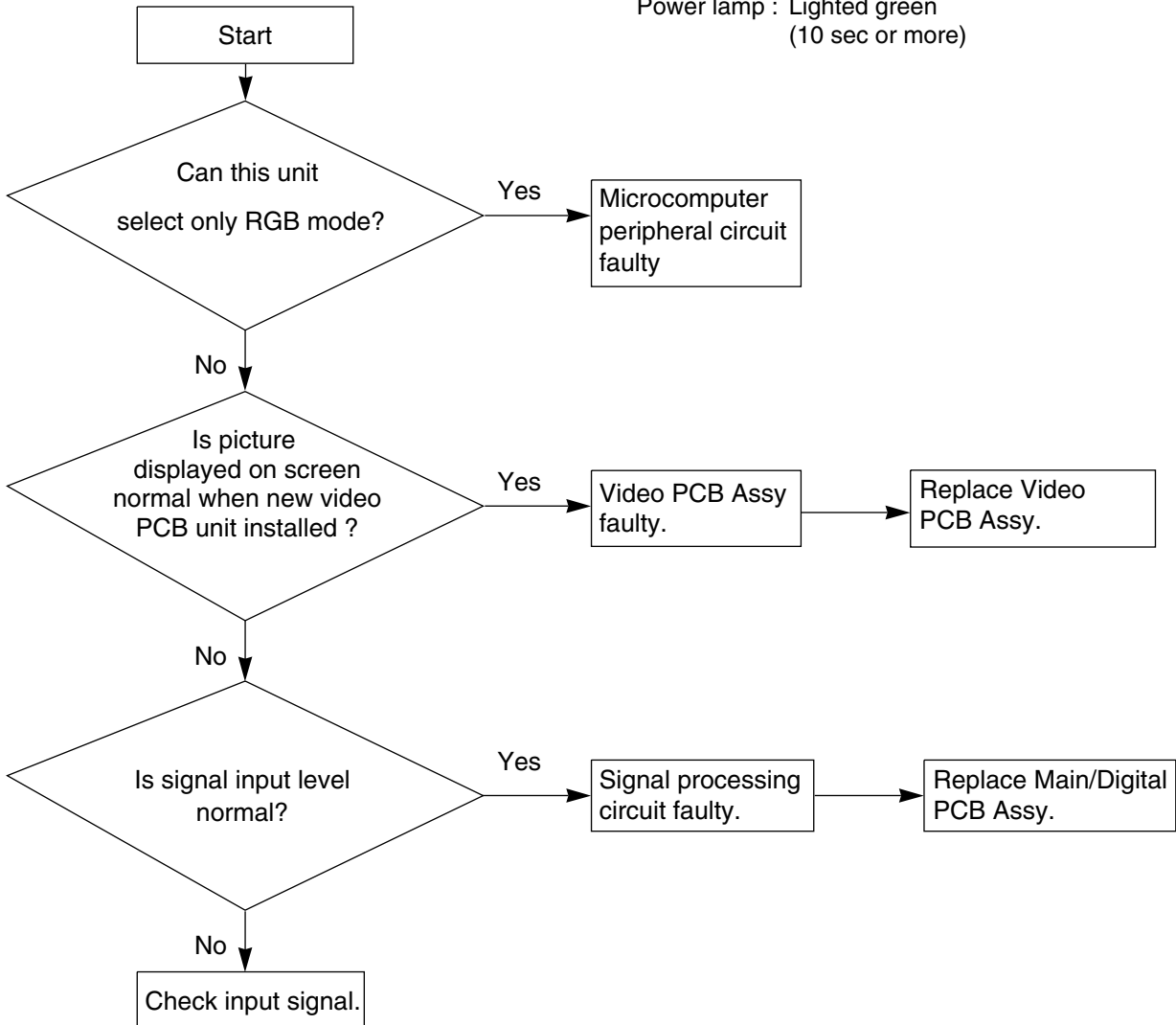
Power lamp : Lighted green.
(10 sec or more)



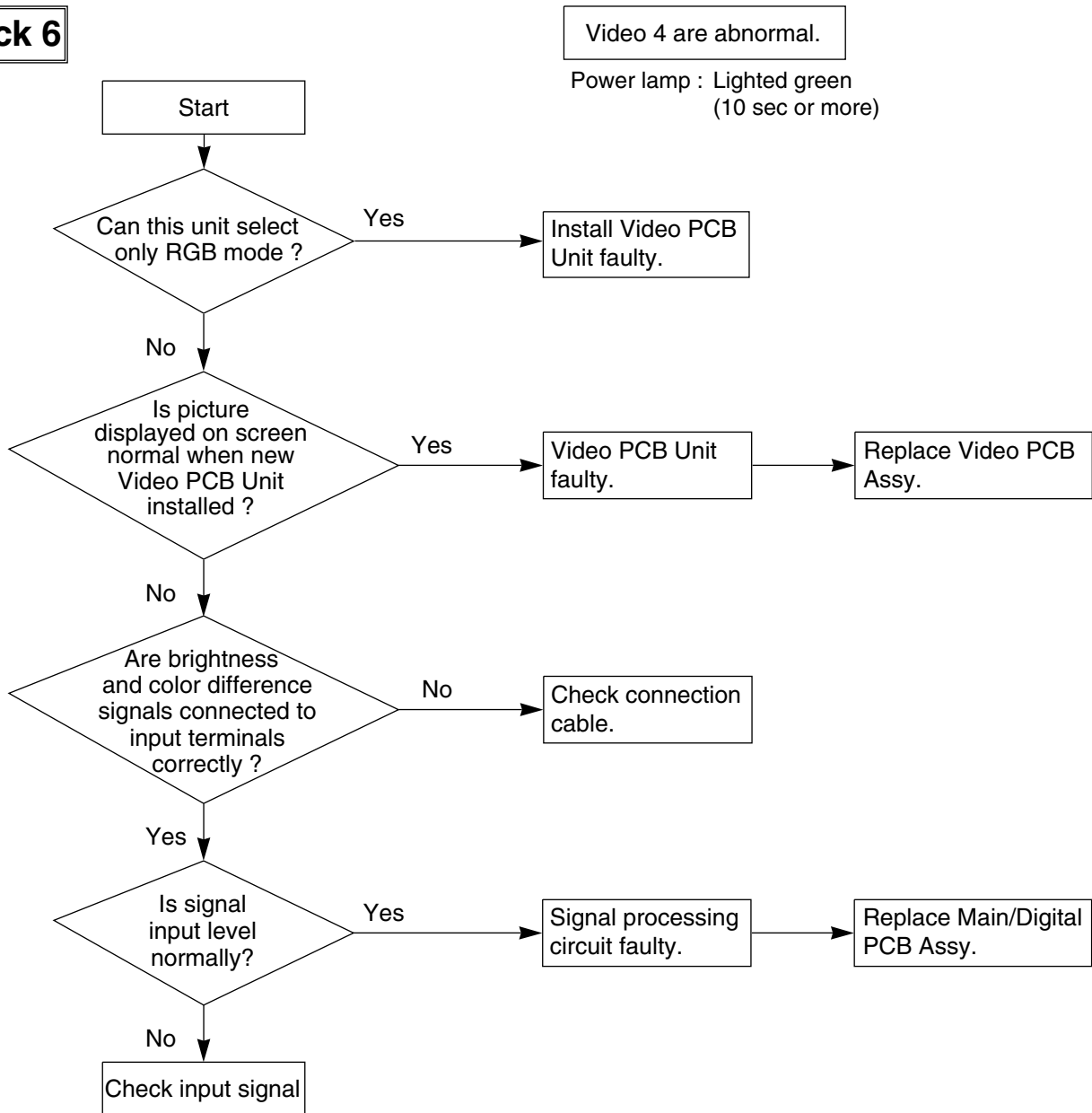
Check 5

Video 1/ Video 2/ Video 3 input signal are abnormal.

Power lamp : Lighted green
(10 sec or more)



Check 6



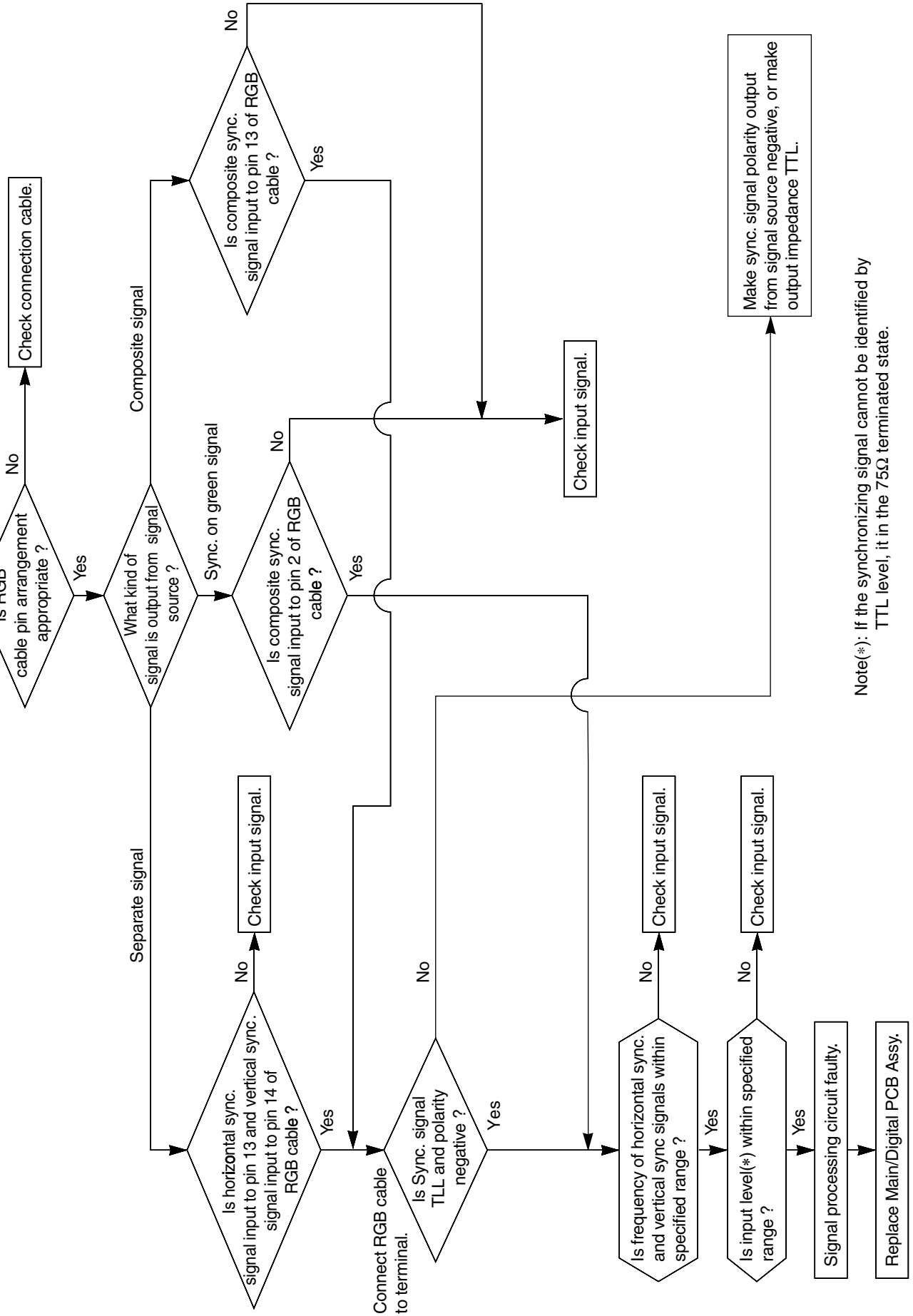
Video 4 are abnormal.
Power lamp : Lighted green
(10 sec or more)

*SYNC signals are added to the Y signal.

Check 7

RGB input is abnormal.

Power lamp: Lighted green (10 sec or more)



Note(*): If the synchronizing signal cannot be identified by TTL level, it in the 75Ω terminated state.