

CAUTION HIGH VOLTAGE

T1.5A/250V
F101

CON101

LT10U439

IC102

R204

R205

C204

R209

R203

C207

R202

D205

D204

D203

D201

D201

R207

R206

JW201

20201

3V

12V

GND

+12V

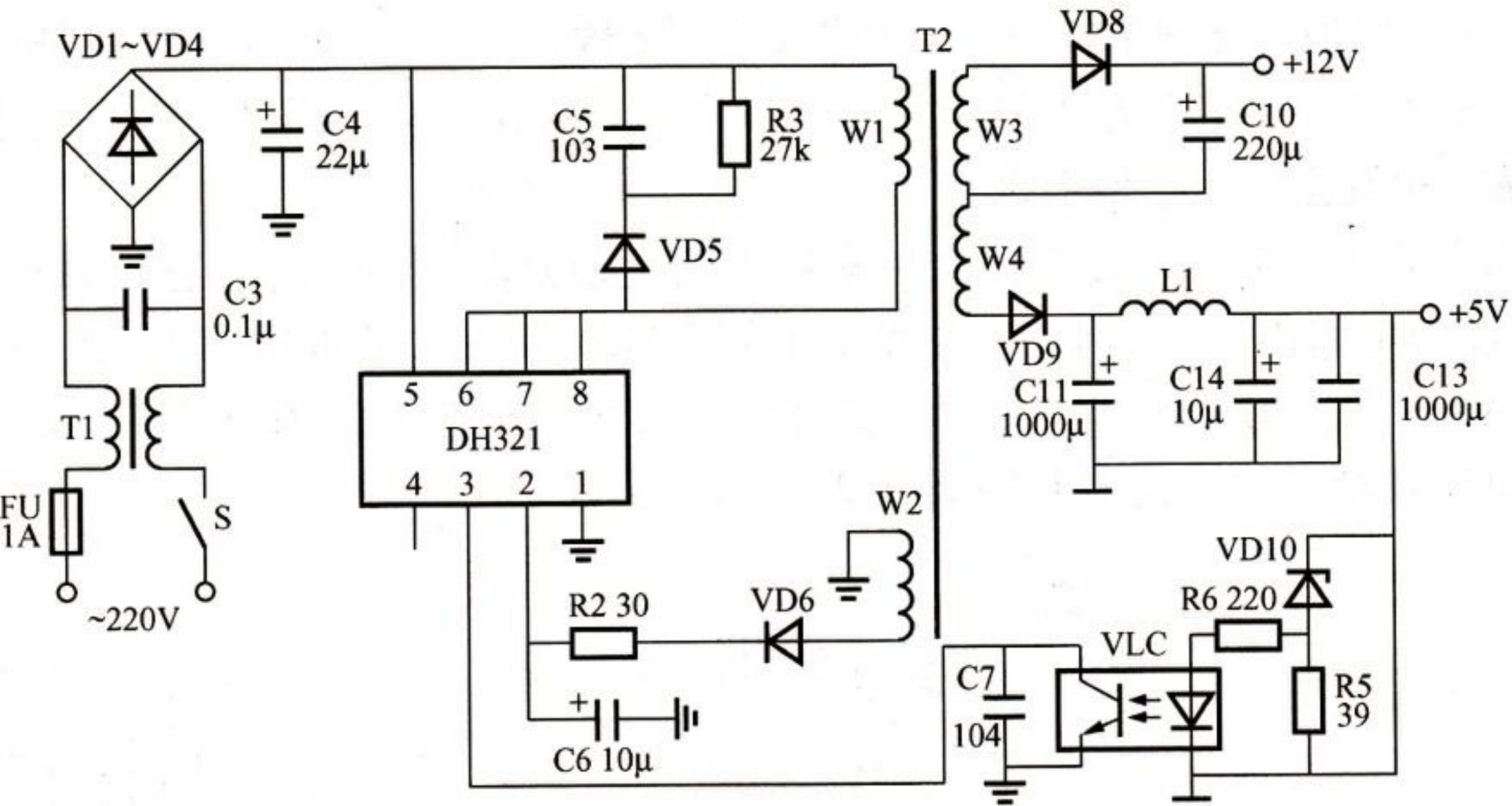
HT2

GRAND TEA1521-03

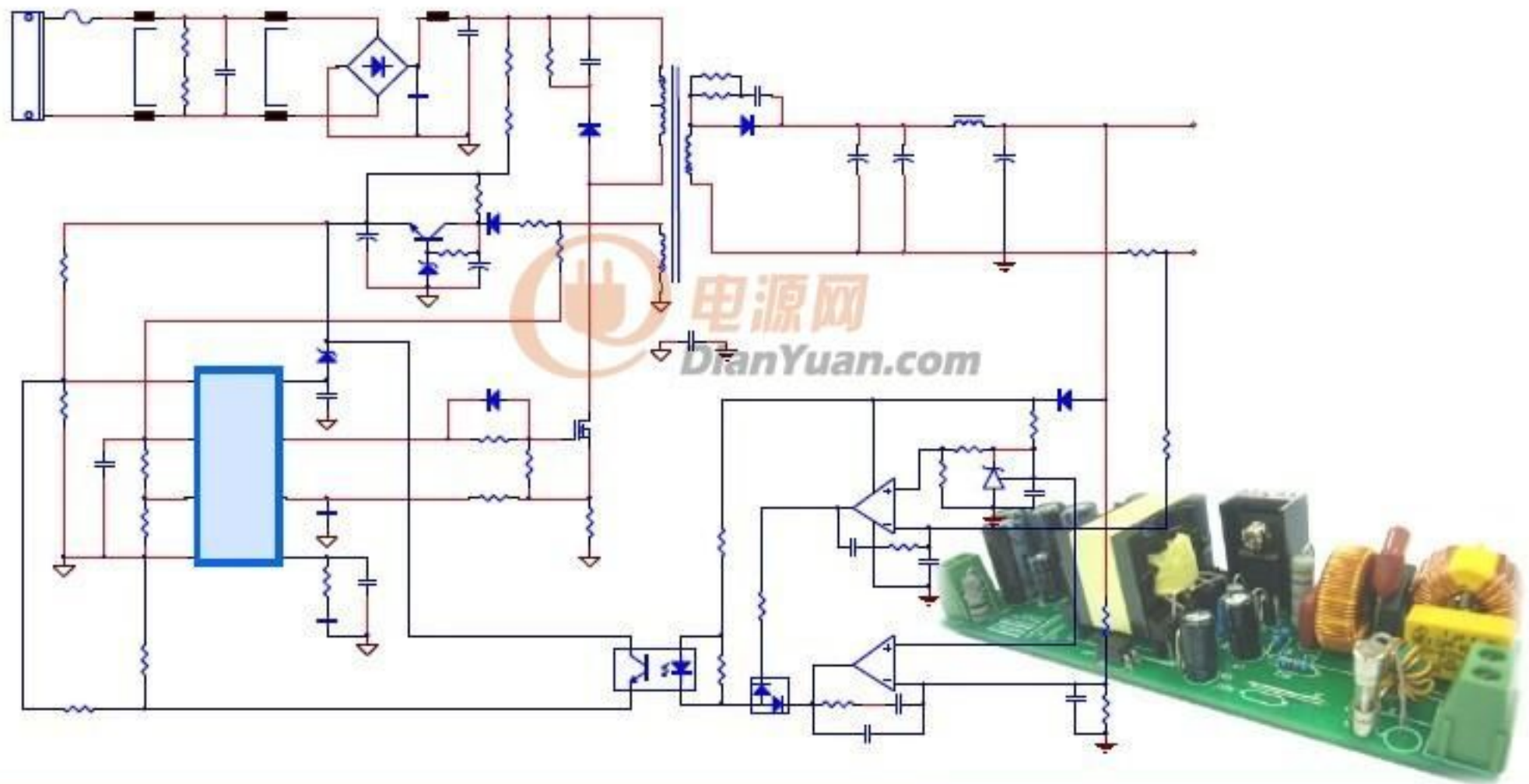
2005.10.04

V:1.0

WARNING: REPLACE ONLY WITH SAME TYPE RATING OF FUSE



功率	效率	输出电压	输出电流	输入电压	PF	方案
30W	87%@220V	24V	0-1.25A	90~264V	0.95@220Vac	FAN7529/FAN7530



Typical Application

