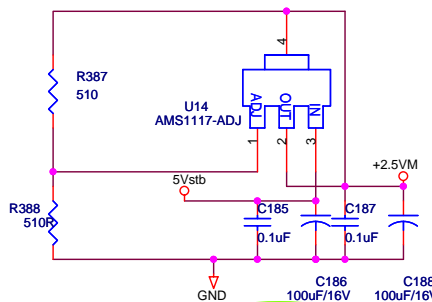
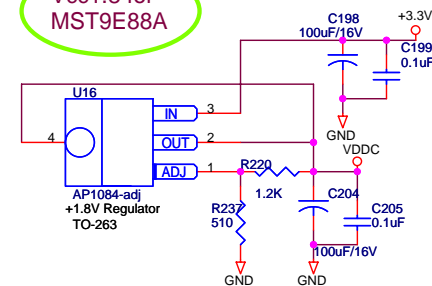
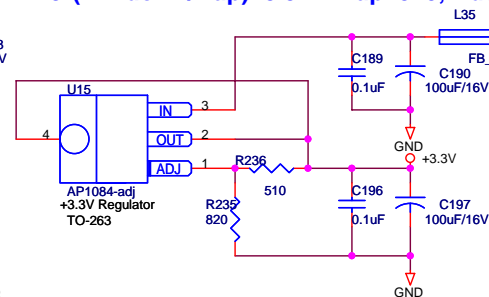


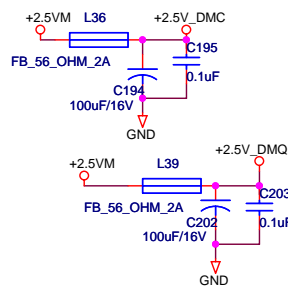


$$1.25 \cdot (1 + R_{\text{down}}/R_{\text{up}}) = 3.3\text{V} \text{---} R_{\text{up}} = 510, R_{\text{down}} = 820$$

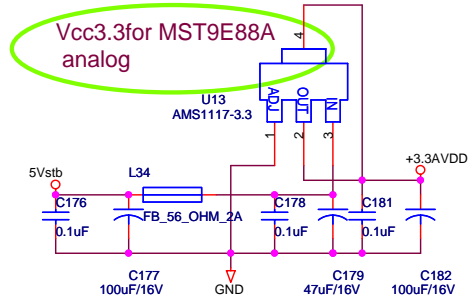
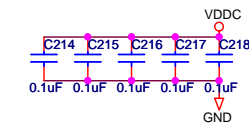
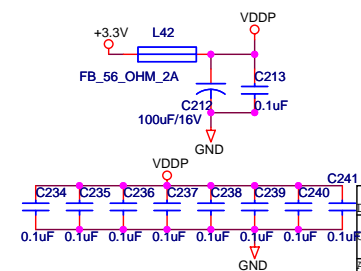
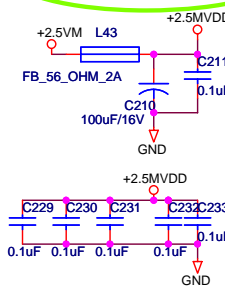
$$1.25 \cdot (1 + R_{\text{down}}/R_{\text{up}}) = 1.8V \text{---} R_{\text{up}} = 1.2K, R_{\text{down}} = 510$$



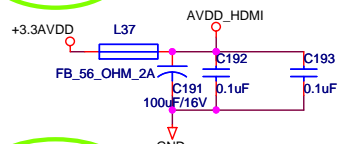
2.5V for DDRAM



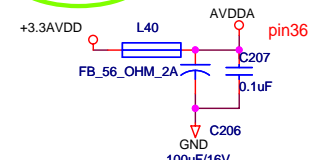
+2.5V for MST9E88A



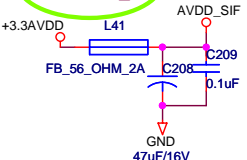
+3.3VAVDD for
AVDD_HDMI pin6,pin12



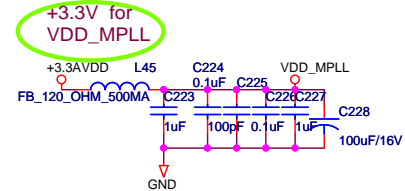
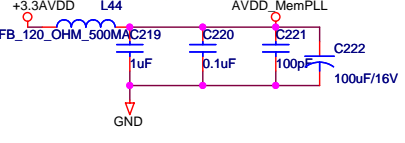
+3.3AVDD fo
AVDDA



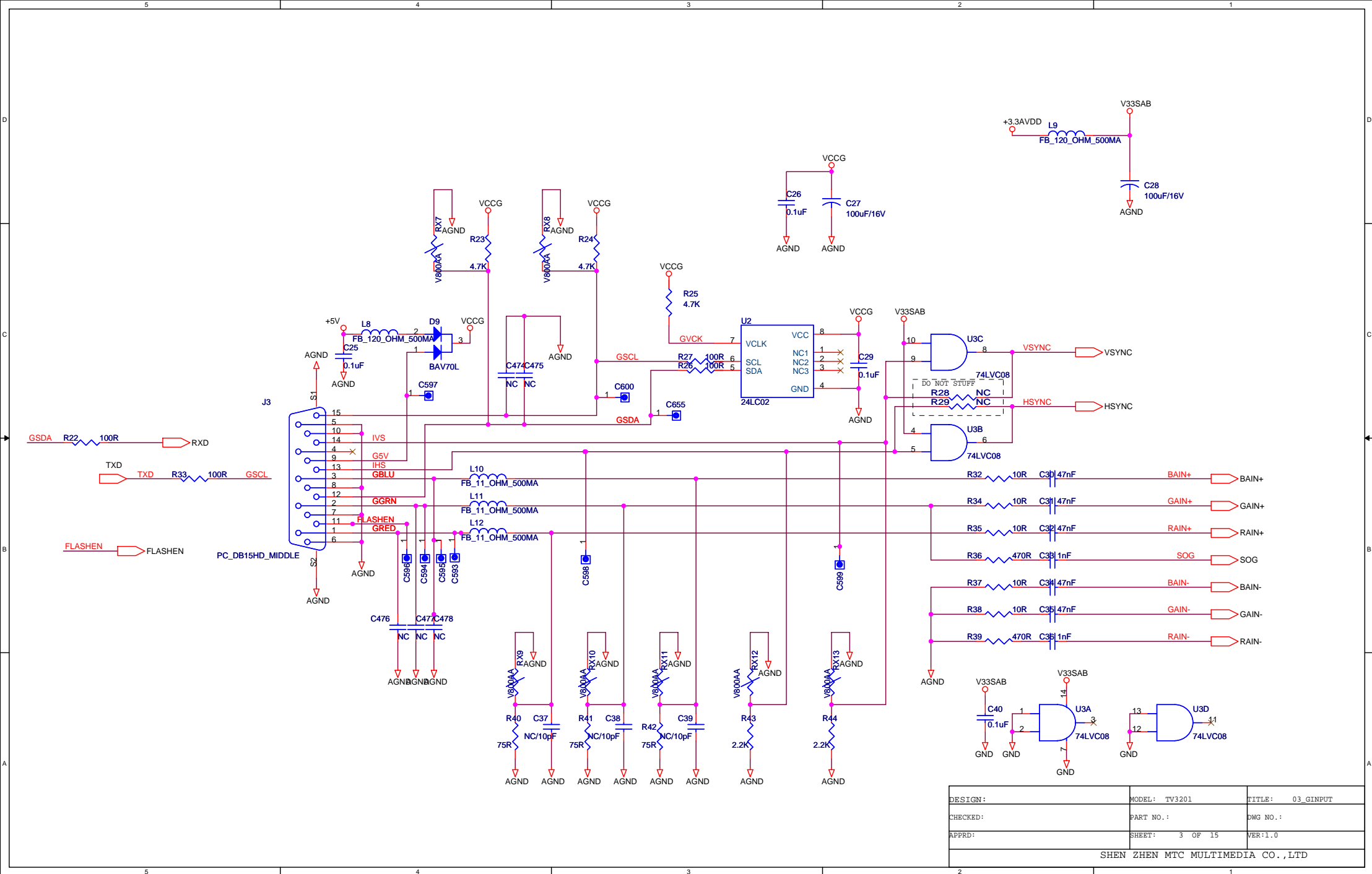
+3.3AVDD
for AVDD_SIF

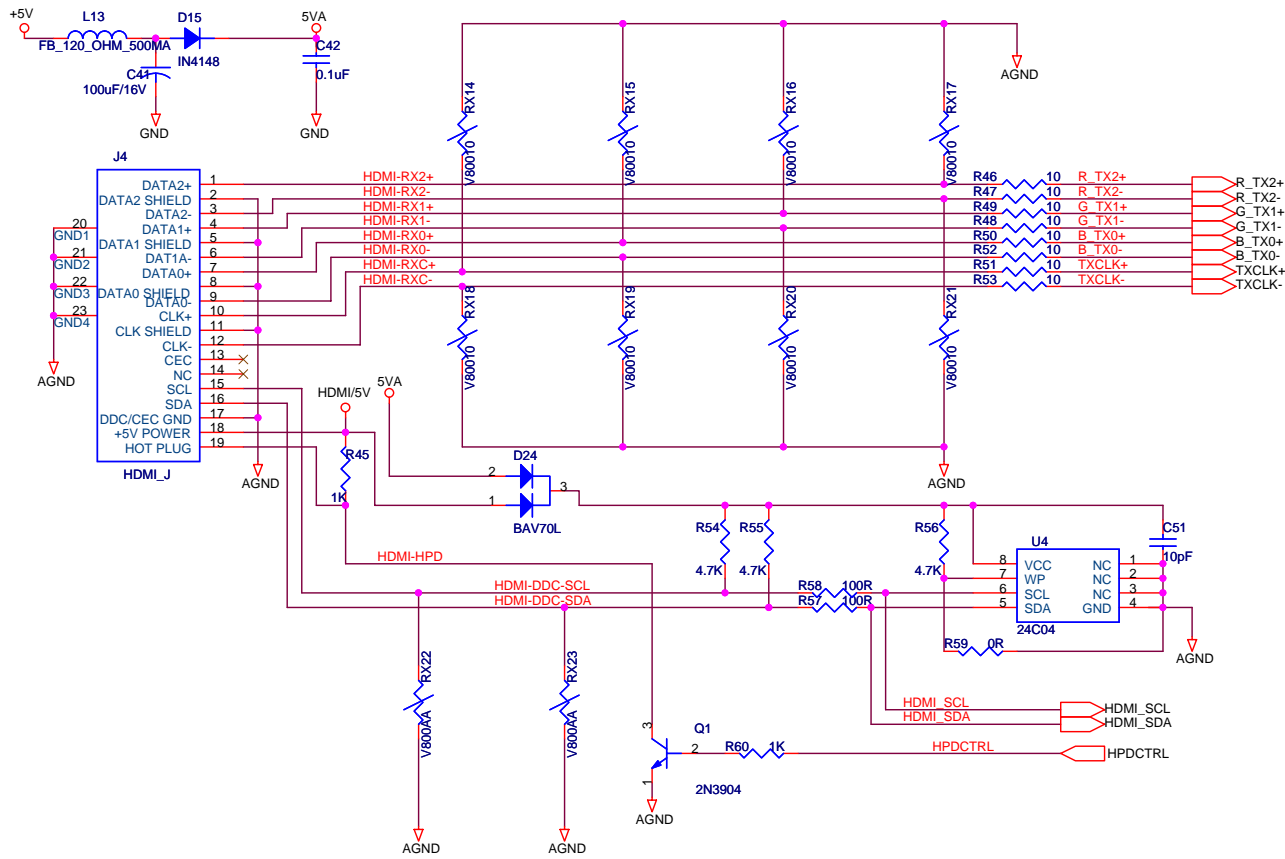


+3.3V for VDD_MPLL

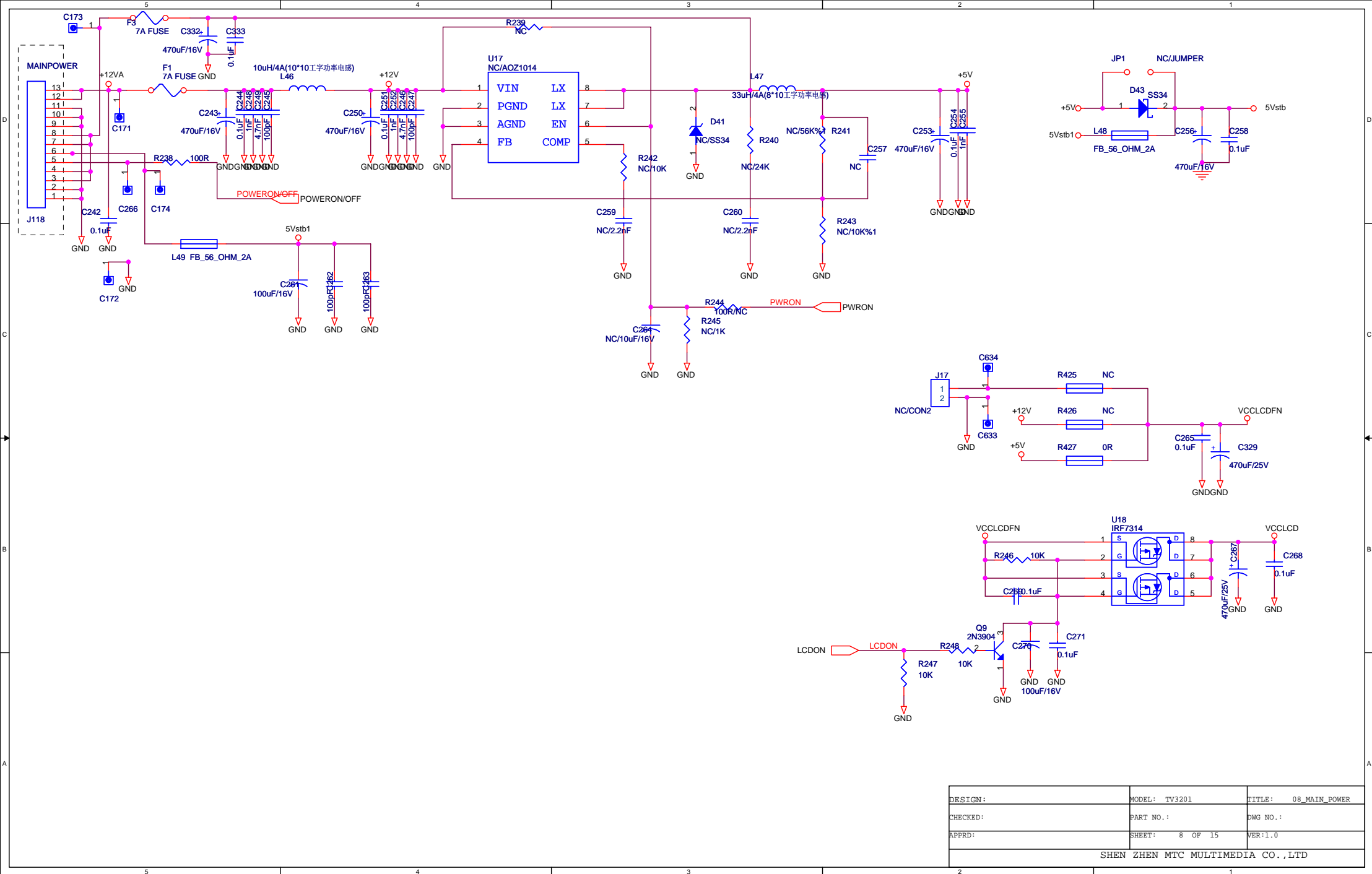


DESIGN:	MODEL: TV3201	TITLE: 07_CORE_POWER
CHECKED:	PART NO.:	DWG NO.:
APPRD:	SHEET: 7 OF 15	VER:1.0
SHEN ZHEN MTC MULTIMEDIA CO.,LTD		

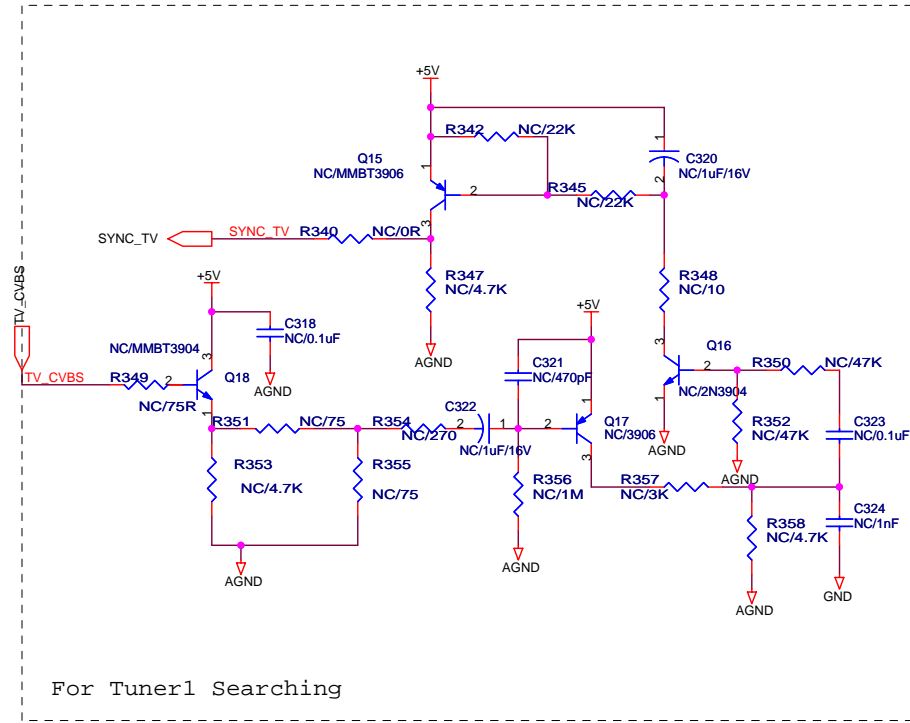
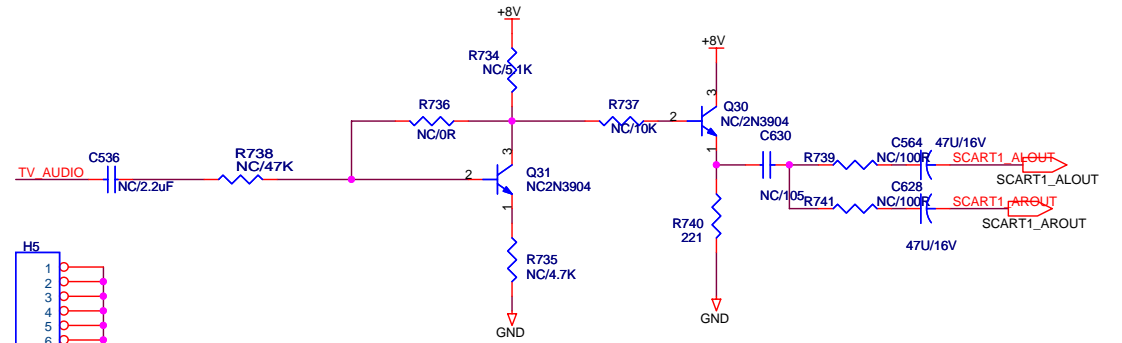
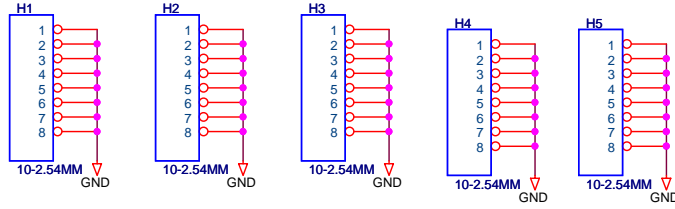
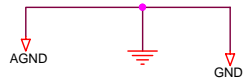




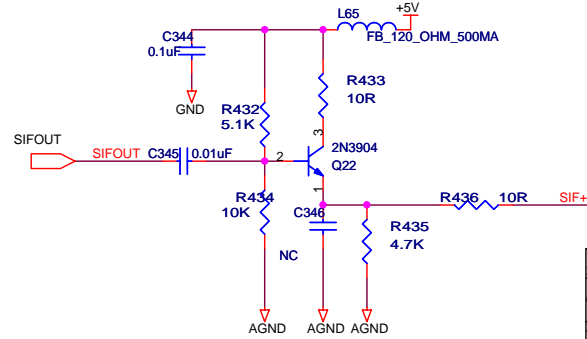
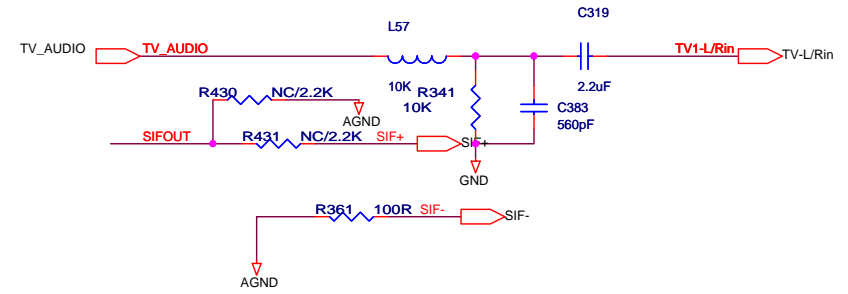
DESIGN:	MODEL: TV3201	TITLE: 04_HDMI
CHECKED:	PART NO.:	DWG NO.:
APPRD:	SHEET: 4 OF 15	VER:1.0
SHEN ZHEN MTC MULTIMEDIA CO.,LTD		



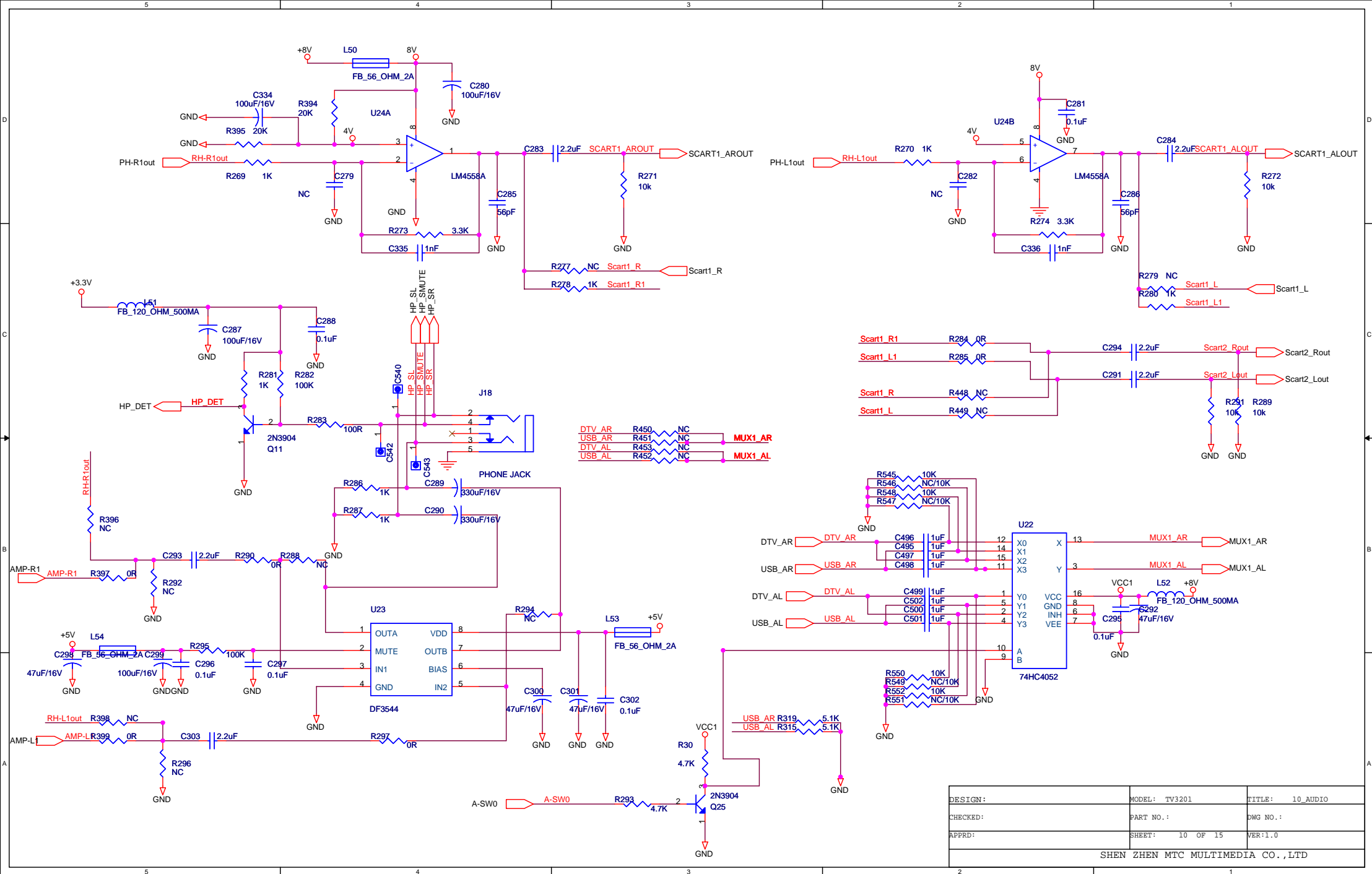
MARK1
MARK2
C1
C2

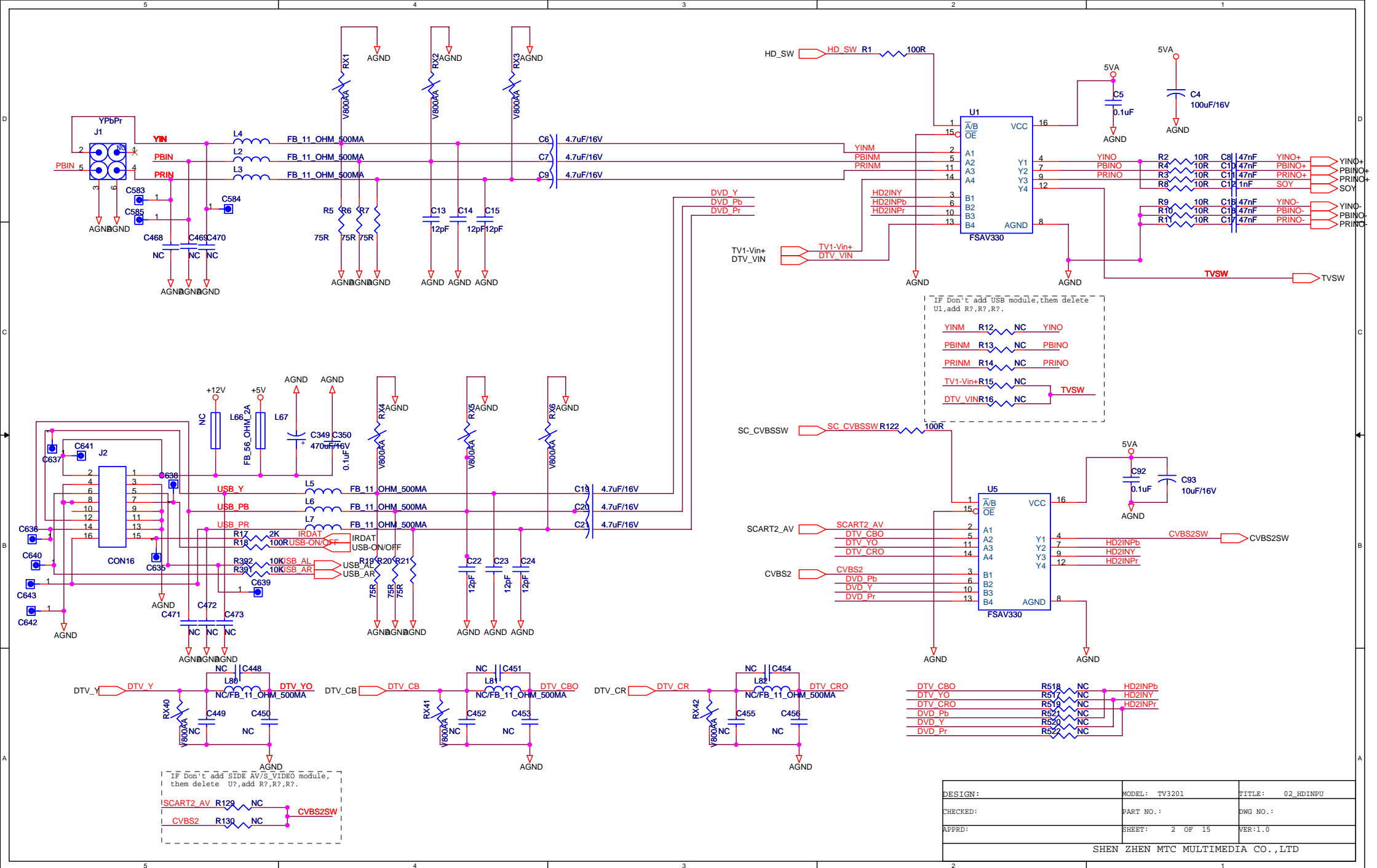


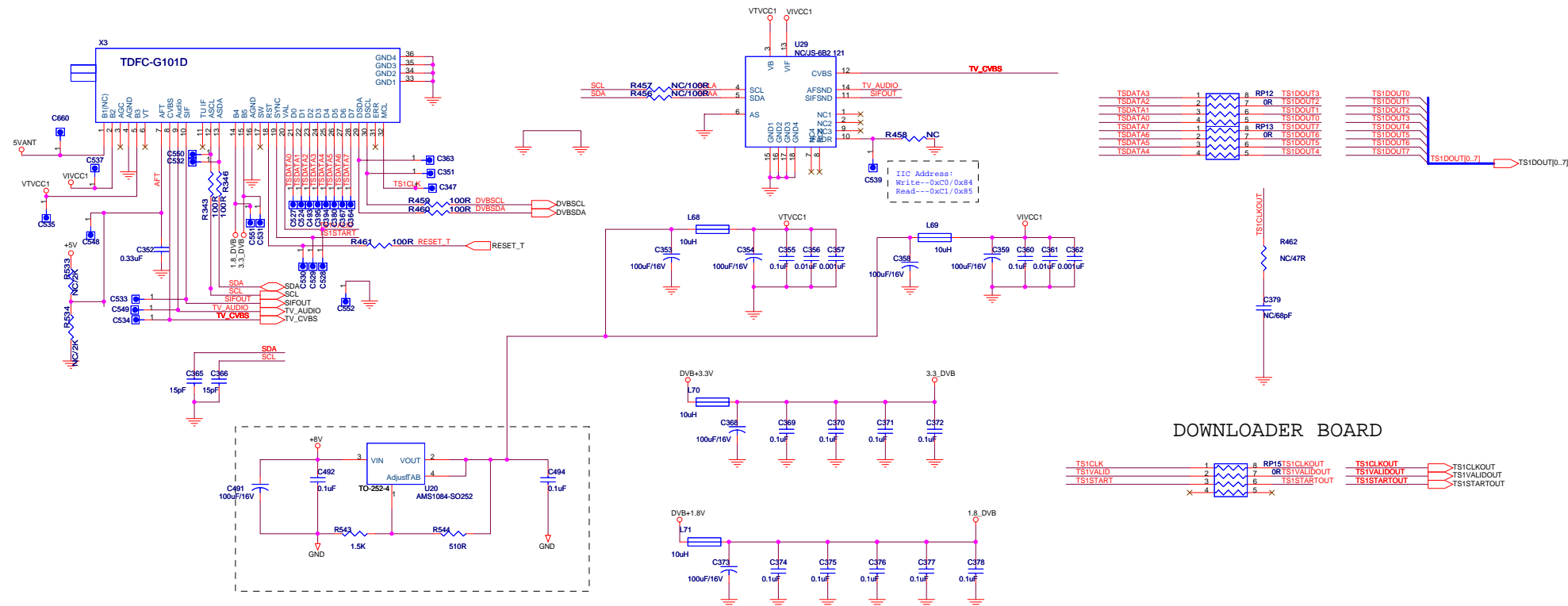
For Tuner1 Searching



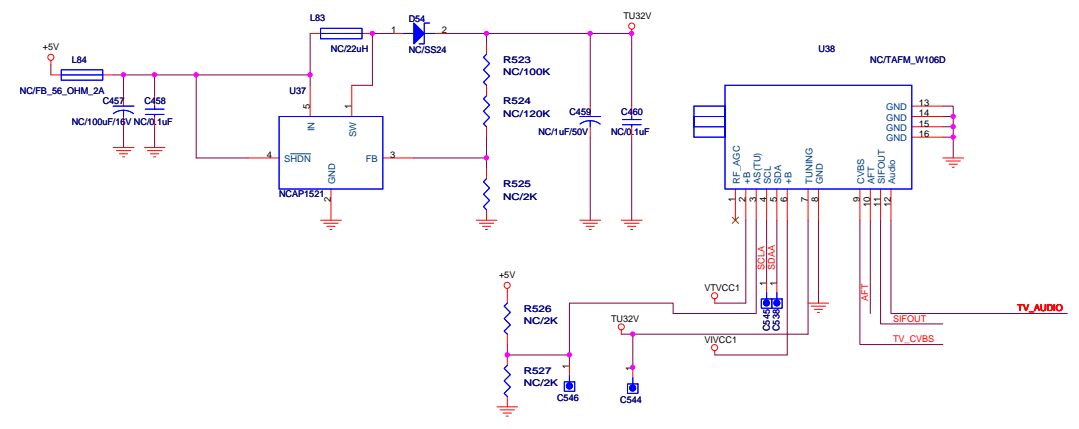
DESIGN:	MODEL: TV3201	TITLE: 12_TUNER
CHECKED:	PART NO.:	DWG NO.:
APPRD:	SHEET: 12 OF 15	VER:1.0
SHEN ZHEN MTC MULTIMEDIA CO.,LTD		

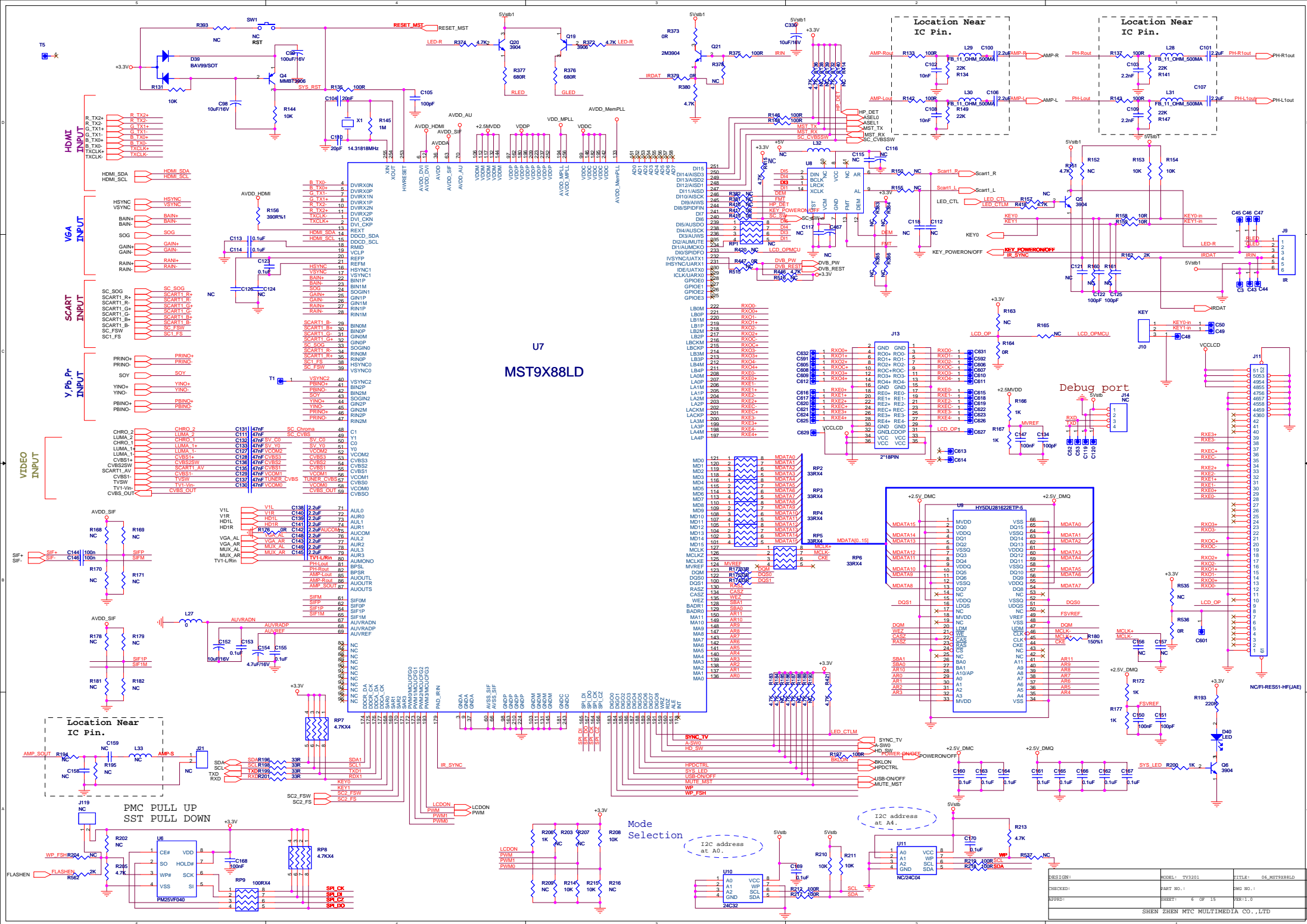




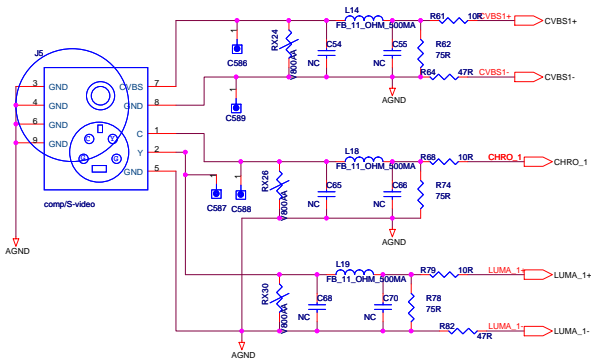


FRONT-END

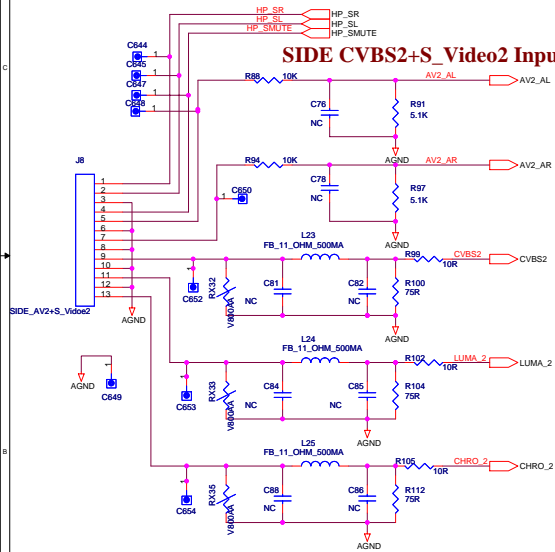




CVBS1+S_Video1 Input

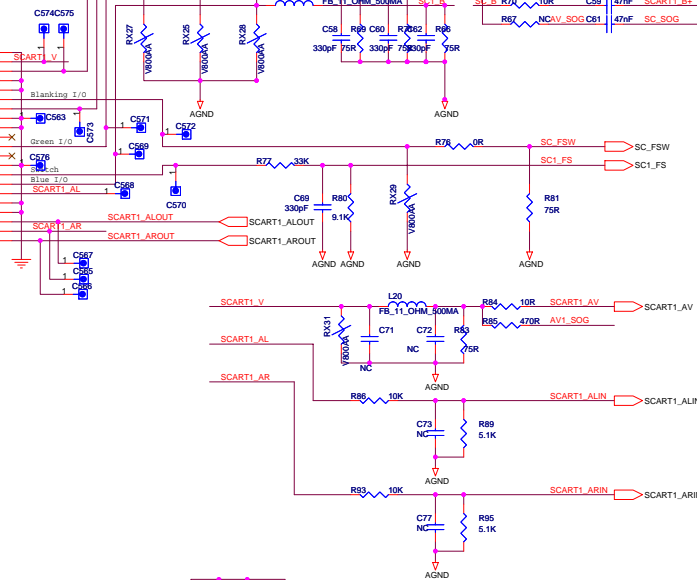


SIDE CVBS2+S_Video2 Input



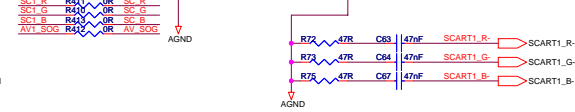
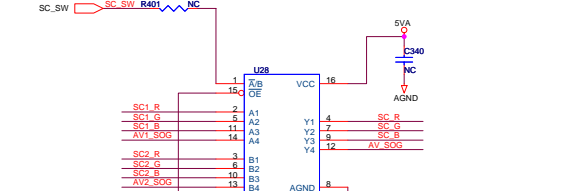
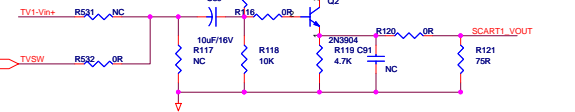
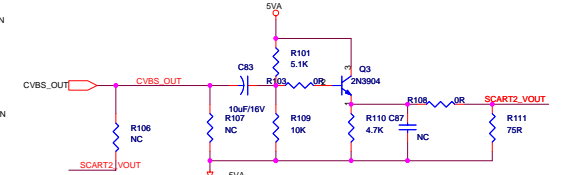
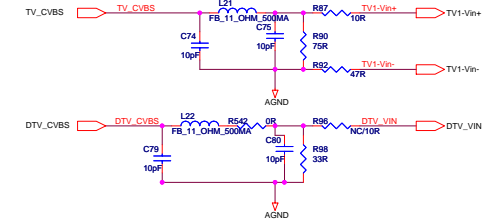
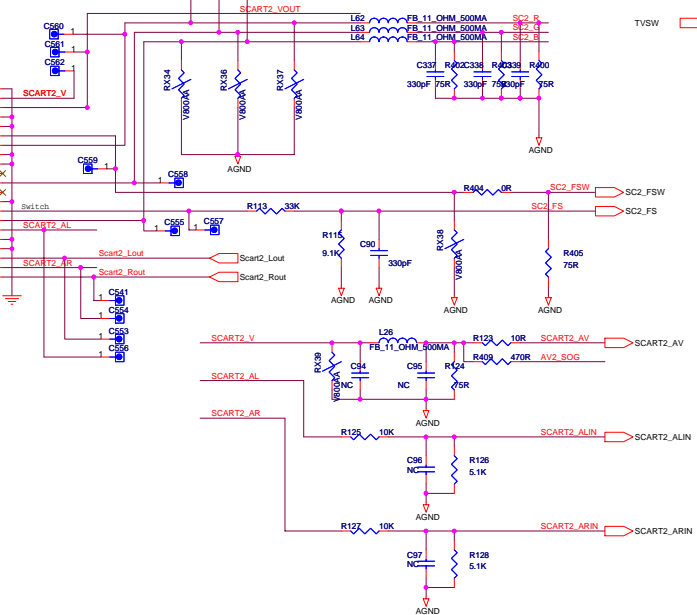
SCART1(AV+RGB) Input

SCART 1



SCART2(AV) Input

SCART 2



DESIGN:	MODEL: TV3201	TITLE: 05_AVINPUT
CHECKED:	PART NO.:	REV NO.:
APPROVED:	SHEET: 5 OF 15	REV:1.0
SHEN ZHEN MTC MULTIMEDIA CO.,LTD		

