



Assistenza Tecnica

After Sales Service

Service Apres Vente

Kundendienst

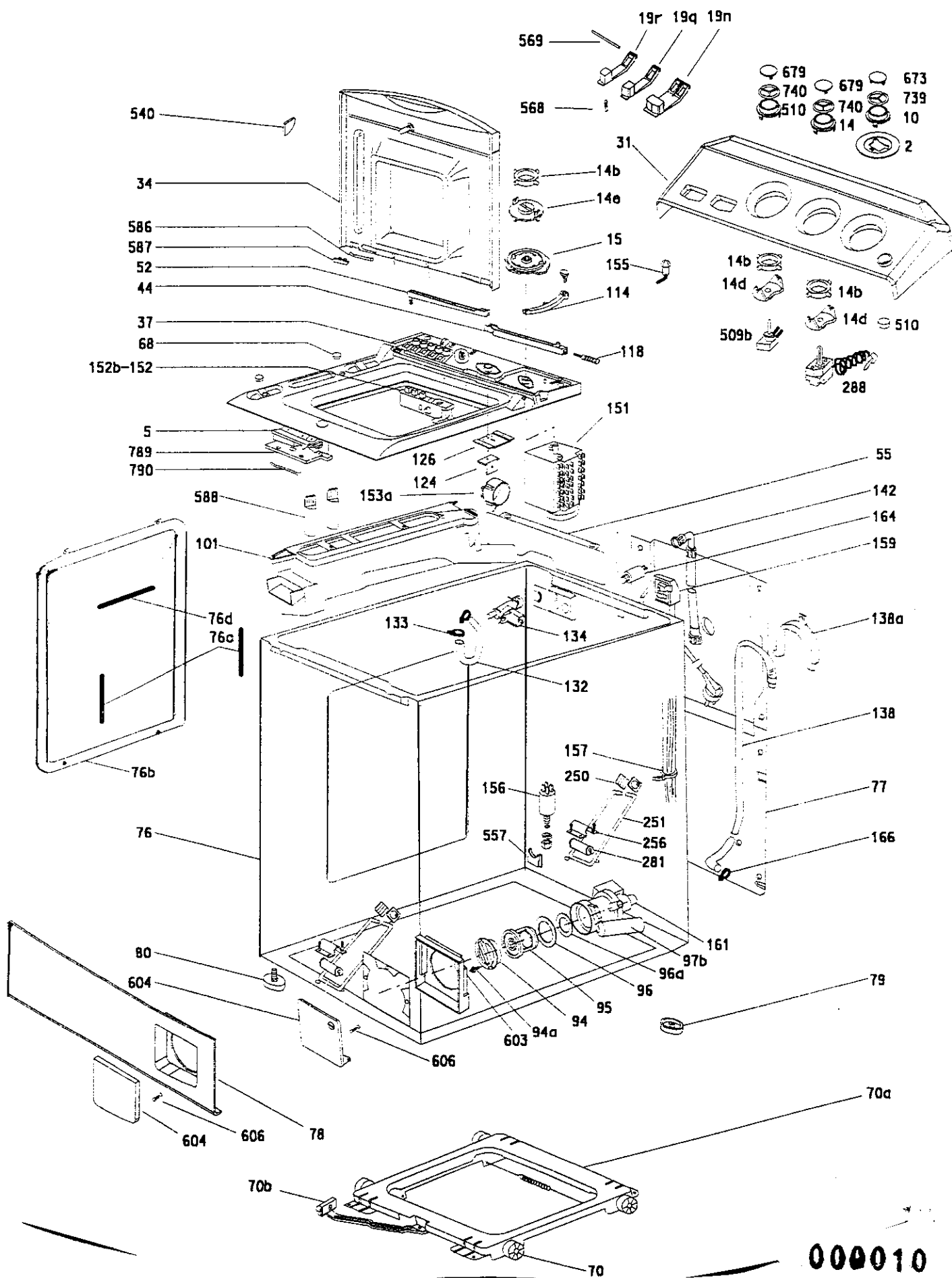
Servicio Post-Venta

Z ZEROWATT

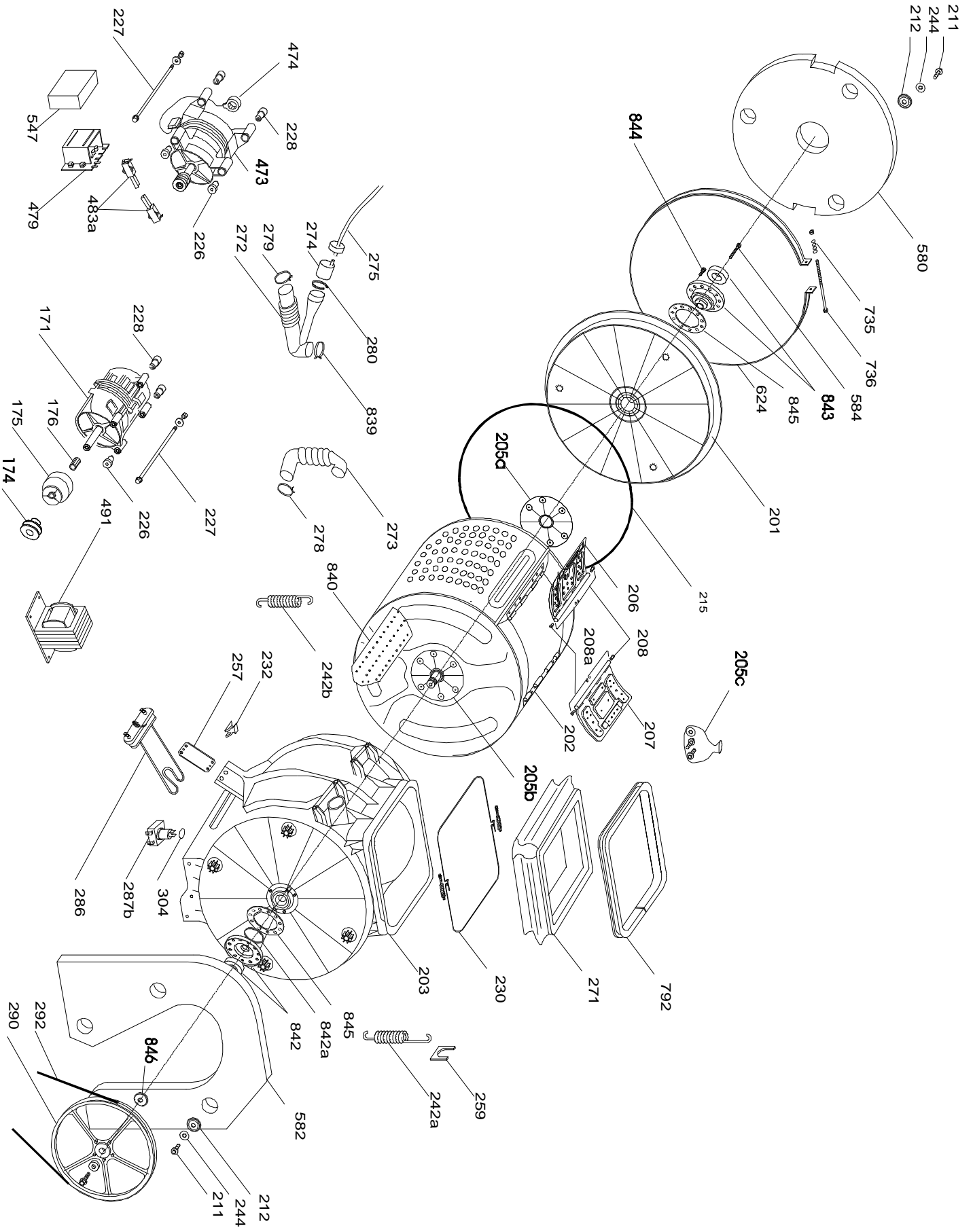
W.MACHINE/WASHER-DRYER

37503943 ZT840

Service Manual



000010



**Mod: 37503943 ZT840 9728 (11/07/1997)**

		Ricambio Part No. Piece E-Teil Pieza	Inizio Beginning Debut Begin Inicio	Fine Ending Fin End Fin
Ref.	Descrizione - Description - Beschreibung - Descripcion			
2	Programs disc	80040330		
5	Door safety device	80001407		
10	Timer/select. knob	80035025		
14	Temp.regulation knob	80039019		
14b	Piston pin	80034044		
14d	Term-potenz.knobs support	80034069		
14e	Timer knobs support	80034051		
15	Cam disc	80027998		
19q	R/H simple push-button	80034978		
19r	L/H simple push button	80034960		
31	Control panel	80040538		
34	White cover	80037435		
37	Upper shelf	80027121		
44	Direction control rod	92673946		
52	Direction control rod	92134964		
55	Insulating side	92943547		
68	Plug	80027139		
70	Trolley wheel	80001795		
70a	Chassis assy with wheels	80041189		
70b	Protection	80034267		
76	Cabinet assy	80035397		
76b	Cabinet side cover	80007347		
76c	Cabinet side cover gasket	80007180		
76d	Cabinet upper cover gaske	80007826		
77	Rear panel	80034564		
78	Kickpanel	80034143		
79	Rear foot	92606474		
80	Front foot	92692300		
94a	Bolt	92415140		
95	Filter cartridge	92945468		
96	Gasket	92606391		



Mod: 37503943 ZT840 9728 (11/07/1997)

		Ricambio Part No. Piece E-Teil Pieza	Inizio Beginning Debut Begin Inicio	Fine Ending Fin End Fin
Ref.	Descrizione - Description - Beschreibung - Descripcion			
96a	Gasket	92607639		
97b	Filt.hous.without recycle	92132109		
101	Dispenser drawer	80029242		
114	Driving lever	92673870		
118	Spring	80001183		
119	Adjustable pressost.knob	80040348		
124	Press.fixing plate	92877752		
126	Pressostat lever assy	92155860		
132	Valve hose cold water	80034770		
133	Hose clip	80034762		
134	Solenoid valve	90450750		
138a	Drain house elbow	80001787		
142	Fill hose	80001688		
151	Timer	91203547		
152b	4 push buttons key board	92125806		
153a	Regurable pressostat	80019854		
155a	White indicator light	80007743		
157	Harness	80039597		
161	Drain/recycle pump	80036874		
164	Anti jamming filter radio	92205525		
166	Hose clip	80001126		
201	Front flange	80035132	9810 (03/03/1998)	9810 (03/03/1998)
201	Front flange	80035108		
202	Drum	80024805		
202	Drum	80035249	9810 (03/03/1998)	
202	Drum	80035124		
203	Tub	80035157	9810 (03/03/1998)	
203	Tub	80035140		
205a	Right drum shaft assy	80000516		
205b	Left drum shaft assy	80032683	9810 (03/03/1998)	
205b	Left drum shaft assy	80032584		
205c	Drum shaft fixing kit	81448136		
206	Rolling shutt withou hook	80024920		

**Mod: 37503943 ZT840 9728 (11/07/1997)**

		Ricambio Part No. Piece E-Teil Pieza	Inizio Beginning Debut Begin Inicio	Fine Ending Fin End Fin
Ref.	Descrizione - Description - Beschreibung - Descripcion			
207	Rolling shutter with hook	80024912		
208	R/H spring	80010242		
208a	L/H spring	80010259		
211	Bolt	80000946		
212	Asbestos washer	80000755		
215	Tub gasket	80018989		
227	Motor stay bolt	80000995		
228	Shock absorber bearing	80001647		
228a	Pulley bearing	80001639		
230	Tub gasket clip	92787316		
232	Heater holder	92675891		
242a	R/H support spring	80002306		
242b	L/H support spring	80002298		
244	Washer	80000664		
250	Damper pads	92697838		
251	Shoch absorber spring	80002322		
256	Clamp	92851302		
257	Damper slide	92863976		
259	Support	92673961		
271	Door gasket	80007818		
272	Discharge pipe	80033939		
273	Fill pipe	80001589		
274	Pressure switch air chamber	80001845		
275	5x8 hose	80024995		
281	Shock Absorder grommet	92606227		
286	Heater	80023609		
287b	Thermostat (30/90)	92216498		
287g	Thermostat	92747690		
288	Temperature regulator	80030372		
290	Drum pulley	80036577		
292a	Extensible belt	80001704		



Mod: 37503943 ZT840 9728 (11/07/1997)

Ref.	Descrizione - Description - Beschreibung - Descripcion	Ricambio Part No. Piece E-Teil Pieza	Inizio Beginning Debut Begin Inicio	Fine Ending Fin End Fin
304	Gasket	80015936		
473	Commutator motor	80029390		
479	Electronic control	91203679		
491	Mains cable	80001530		
547	Module protection	91612044		
557	Hose support hook	80001753		
568	Spring for push.button	92483916		
569	Pin for push buttons	80036072		
580	Front counterweight	80001720		
582	Pulley side count.weight	80001738		
584	Drum support fixin screw	80001191		
586	Counter cover pin	92730696		
587	Counter cover stopper	92137306		
588	Siphon	92134972		
604	Filter door	80034259		
606	Spring for filter door	80002264		
624	Tire for tightening tub	80018666		
673	Timer knob cover	80002108		
679	Knob cover	80001910		
735	Clousure ring spring	80002314		
736	Clousure ring screw	80018690		
739	OR timer knob	90481680		
740	OR thermostat knob	90480500		
789	Door safety device bracke	80000466		
790	Door safety device spring	80031784		
792	Gasket support	80027261		
839	Clip	80001118		
839	Clip	80001142		
842	Tub bearing disk	80037476	9810 (03/03/1998)	
842	Tub bearing disk	80037468		
843	Flange bearing disk	80037492	9810 (03/03/1998)	
843	Flange bearing disk	80037484		

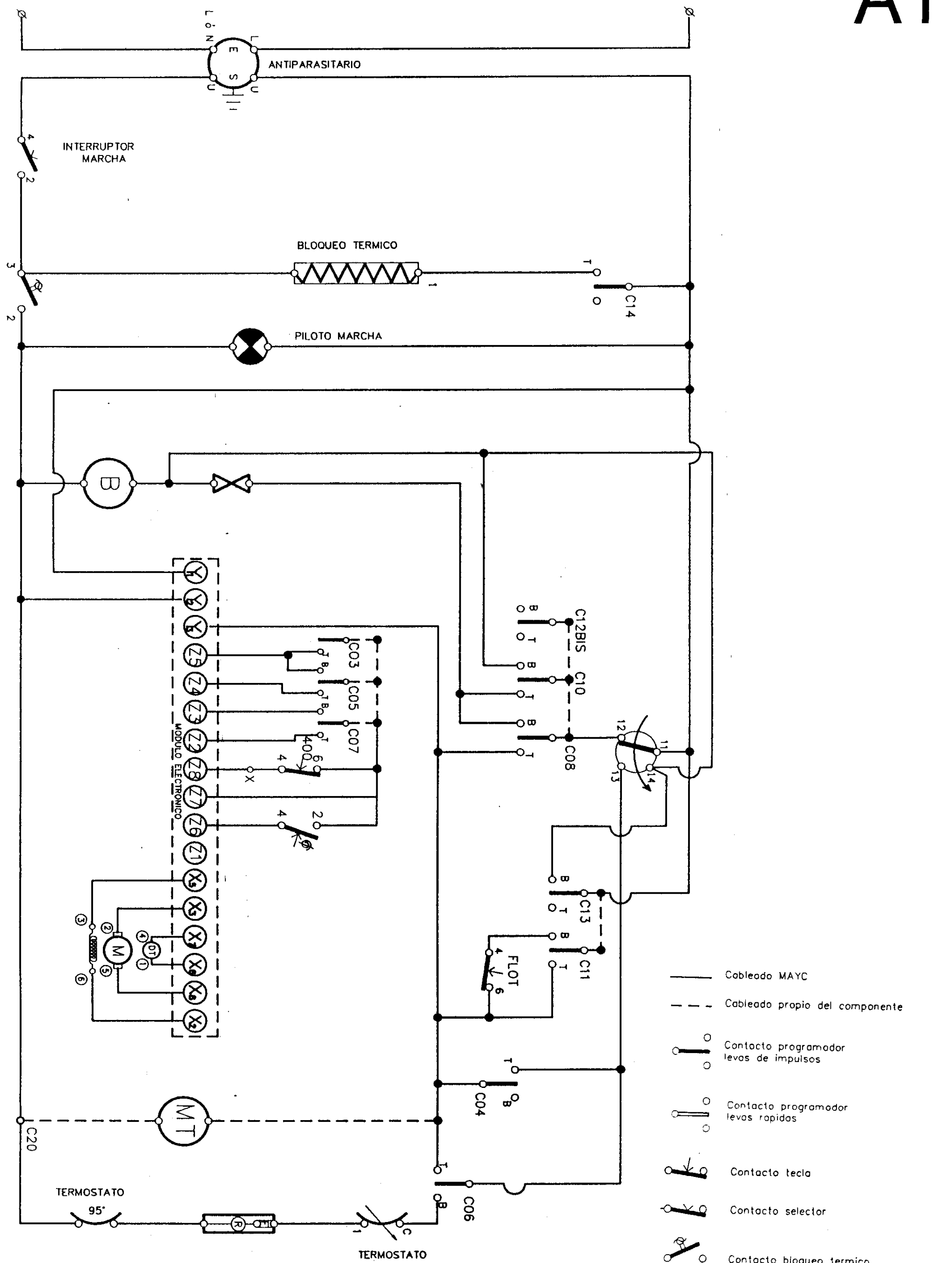


Mod: 37503943 ZT840 9728 (11/07/1997)

		Ricambio Part No. Piece E-Teil Pieza	Inizio Beginning Debut Begin Inicio	Fine Ending Fin End Fin
Ref.	Descrizione - Description - Beschreibung - Descripcion			
844	Disk fixing screw	80040223		
845	Gasket	80032626		
846	Washer	80036593		
999	Wiring diagram	80039555		

**Mod: 37503943 ZT840 9728 (11/07/1997) - Modifications History -**

		Ricambio Part No. Piece E-Teil Pieza	Inizio Beginning Debut Begin Inicio	Fine Ending Fin End Fin
Ref.	Descrizione - Description - Beschreibung - Descripcion			
	NEW TUB 800 RPM			
201	Front flange	80035132		9810 (03/03/1998)
201	Front flange	80035108	9810 (03/03/1998)	
202	Drum	80035249		9810 (03/03/1998)
202	Drum	80035124	9810 (03/03/1998)	
203	Tub	80035157		9810 (03/03/1998)
203	Tub	80035140	9810 (03/03/1998)	
205b	Left drum shaft assy	80032683		9810 (03/03/1998)
205b	Left drum shaft assy	80032584	9810 (03/03/1998)	
842	Tub bearing disk	80037476		9810 (03/03/1998)
842	Tub bearing disk	80037468	9810 (03/03/1998)	
843	Flange bearing disk	80037492		9810 (03/03/1998)
843	Flange bearing disk	80037484	9810 (03/03/1998)	



N.80039555

Sustituye a:

Sustituido por:

REGLETA

ANTIPARASITARIO

PILOTO

E.V.

CONMUTADO

PRESOSTATO

TERMOSTATO

PROGRAMADOR

PROGRAMADOR

BLOQUEO

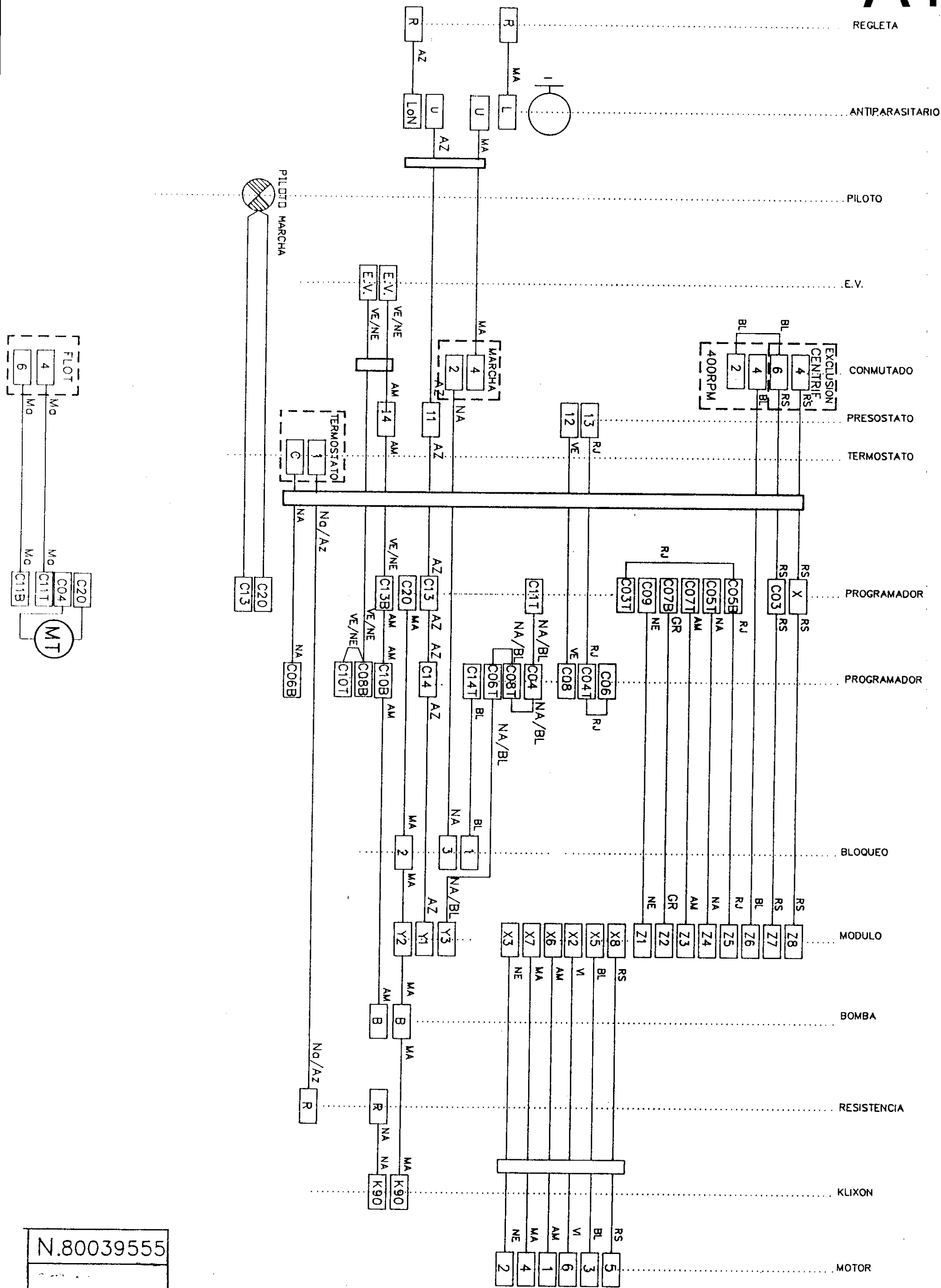
MODULO

BOMBA

RESISTENCIA

KLIXON

MOTOR




N.80039555

TIMER COD. 9120353.9 - COD. 9120354.7

[illegible]

LEGENDA - LIST - LISTE - VERZEICHNIS - LEYENDA

- CARICO ACQUA CALDA - WARM WATER FILLING - CHARGEMENT EAU CHAUDE
WARMWASSERFÜLLUNG - CARGA AGUA CALIENTE
- CARICO ACQUA FREDDA - COLD WATER FILLING - CHARGEMENT EAU FROID
KALTWASSERFÜLLUNG - CARGA AGUA FRIA
- CARICO ACQUA EXTRA - EXTRA WATER FILLING - CHARGEMENT EAU EXTRA
EXTRAWASSERFÜLLUNG - CARGA AGUA EXTRA
- POMPA LAVAGGIO - WASHING PUMP - POMPE LAVAGE
WASCHUNG-PUMP - MOTOBOMBA LAVADO
- POMPA SCARICO - DRAIN PUMP - TUYAU DE VIDANGE
ABLAUSCHLAUCH - MOTOBOMBA DESAGUE
- DIRETTA TIMER - TIMER DIRECT FED - ALIMENTATION DIRECTE DU TIMER
TIMER DIREKT SPEISUNG - ALIMENTACION DIRECTA TIMER
- PIENO TIMER - TIMER FED WITH WATER IN THE TUB - ALIMENTATIO TIMER AVEC EAU DANS LA CUVE
TIMER-SPEISUNG MIT WASSER IN BOTTICH - TIMER ALIMENTADO CON AGUA EN CUBA
- VUOTO TIMER - TIMER FED WITHOUT WATER IN THE TUB - ALIMENTATION SANS EAU DANS LA CUVE
TIMER-SPEISUNG OHNE WASSER IN BOTTICH - ALIMENTACION TIMER SIN AGUA EN CUBA
- ACQUA IN VASCA - WATER IN THE TUB - EAU DANS LA CUVE
WASSER IN DEN WASCHBOTTICH - FLOT
- CARICO ALTO LIVELLO - HIGH LEVEL FILLING - CHARGEMENT HAUT NIVEAU
HOMES NIVEAU FÜLLUNG - CARGA NIVEL ALTO
- LAVAGGIO 35 GIRI - 35 WASHING REVOLUTION - LAVAGE 35 TOURS/N
35 ABWASHUNG DREHZAHL - LAVADO 35 R.P.M.
- INVERSONE TASTO EXTRA - EXTRA PUSH-BUTTON REVERSING - INVERSEUR POUSSOIR EXTRA
EXTRA-TASTE-UMSTEUERMECH - INVERSION TECLA EXTRA
- RESISTENZA LAVAGGIO - WASHING HEATER - RESISTANCE LAVAGE
WIDERSTAND WASHGANG - RESISTENCIA LAVADO
- BLOCCAPORTA VOLTIMETRICO - VOLTMETRIC DOOR SAFETY DEVICE
SICURITE' OVERTURE HUBLO' VOLTIMETRIQUE
VOLTMETRISCHES TÜRÖFFNUNG-SICHEREITSYST - BLOCAPUERTA VOLTIMETRICO
- CODICE 1 - CODE 1 - CODE 1 - CODE 1 - CODIGO 1
- CODICE 2 - CODE 2 - CODE 2 - CODE 2 - CODIGO 2
- CODICE 4 - CODE 4 - CODE 4 - CODE 4 - CODIGO 4
- CODICE 8 - CODE 8 - CODE 8 - CODE 8 - CODIGO 8
- B - BASSO LIVELLO - LOW WATER LEVEL - BASSE NIVEAU EAU - NIEDRIGE WASSERMENGE - NIVEL BAJO
- N - ALTO LIVELLO - HIGH WATER LEVEL - HAUTE NIVEAU EAU - HOHES WASSERMENGE - NIVEL ALTO
- D - INVERSONE DELICATO - SOFT PROGRAMS REVERSING - INVERSEUR PROGRAMMES DELICAT
DELIKATE UMSTEUERMECH - INVEVSOR DELICADO
- F - INVERSONE FORTE - INTENSIVE PROGRAMS REVERSING - INVERSEUR PROGRAMMES INTENSIF
INTENSIVE UMSTEUERMECH - INVEVSOR ENERGIICO
- G - INVERSONE RICICLO - WATER RECYCLE REVERSING - INVERSEUR RECICLÉ EAU
WASSER WIEDER UMSTEUERMECH - INVEVSOR RECICULACION
- L - INVERSONE LANA - WOOL REVERSING - INVERSEUR LAINE - WOLLE UMSTEUERMECH - INVEVSOR LANA
- (P) - CARICO IN MOVIMENTO - WATER FILLING DURING THE WASHING - CHARGEMENT EAU PENDANT LE LAVAGE
WASSERFÜLLUNG WAHREN DER WASCHUNG - CARGA DURANTE EL LAVADO
- P - CARICO ACQUA - WATER FILLING - CHARGEMENT EAU - WASSERFÜLLUNG - CARGA AGUA
- CARICO (FREDDA) - COLD WATER FILLING - CHARGEMENT EAU FROID - KALTWASSERFÜLLUNG - CARGA AGUA FRIA
- CARICO (CALDA) - WARM WATER FILLING - CHARGEMENT EAU CHAUDE - KARMWASSERFÜLLUNG - CARGA AGUA CALIENTE
- CARICO (MISC) - MIXER WATER FILLING - CHARGEMENT EAU MELANGE - GEMISCHE WASSERFÜLLUNG - CARGA AGUA MEZCLADA
- R.R. - WASHING HEATER - RESISTENCE LAVAGE - WIDERSTAND HEATER - RESISTENCIA LAVADO
- LAVORO - WASHING - LAVAGE - WASCHUNG - FUNCIONANDO
- SCARICO - DISCHARGE - VIDANGE - ABLAUF - VACIADO
- POMPA - WASHING PUMPE - POMPE LAVAGE - WASCHUNG-PUMP - MOTOBOMBA
- CENTR. - SPEED SPIN - ESSORAGE - SCHLEUDERUNG - CENTRIFUGADO
- EXTRA - EXTRA PUSH-BUTTON REVERSING - INVERSEUR POUSSOIR EXTRA - EXTRA-TASTE-UMSTEUERMECH - INVERSION TECLA EXTRA
- S.S. - WATER IN THE TUB - EAU DANS LA CUVE - WASSER IN DEN WASCHBOTTICH - FLOT

		VARIANTI SIGNIFICATIVE SIGNIFICANT VARIATIONS VARIATIONS SIGNIFICATIVES BEZEICHNENDE VARIANTEN VARIANTES SIGNIFICATIVAS	
LAVATRICI - WASHINGMACHINES MACHINES A LAVER-WASHMASCHINEN-LAVADORA		DATA-DATE-DATUM - FECHA	INDICE-INDEX-INDEX
DIAGRAMMA TIMER TIMER DIAGRAM - SCHEMA TIMER - TIMER-SCHEMA DIAGRAMA TIEMPOS PROGRAMADOR		04.01.1996 29.02.1996	A00 A01
CODICE DISEÑO - DRAWING CODE - CODE SCHEMA ELECTRIQUE - ELEKTRISCHE SCHEMA CODE - CODIGO DISEÑO			
9, 2, 0, 8, 6, 6, 6, 9			

RIPRODUZIONE VIETATA - FORBIDDEN REPRODUCTION - REPRODUCTION INTERDITE - NACHDRUCK VERBOTEN - REPRODUCCION PROHIBIDA

Z ZEROWATT

**Lavatrici
carica dall'alto**

**Nuova Gamma
1997**