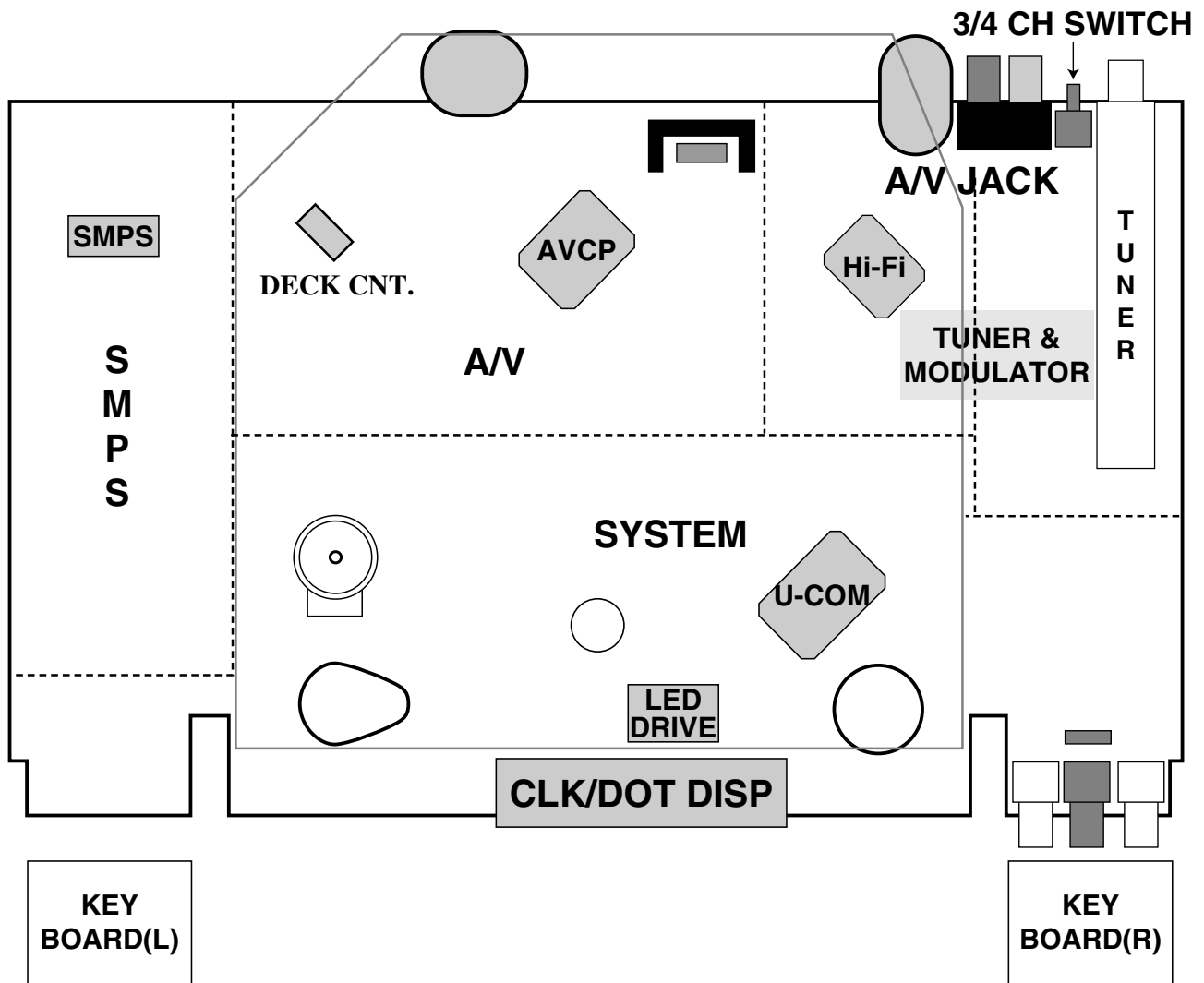


SECTION 3 ELECTRICAL ELECTRICAL ADJUSTMENT POINTS ARRANGEMENT

○ : Measurement point
 □ : Adjustment point



ELECTRICAL ADJUSTMENT PROCEDURES

1. Servo Adjustment

- 1) PG Adjustment
 - Test Equipment

- a) OSCILLOSCOPE
- b) PAL TEST TAPE (VHS SP)
- c) JIG REMOCON (AUTO PG SETTING)

- Adjustment And Specification

| MODE | MEASUREMENT POINT | ADJUSTMENT POINT | SPECIFICATION |
|------|---------------------------|------------------|---------------|
| PLAY | V.Out H/SW(W714, W715) | | 6.5 ± 0.5H |

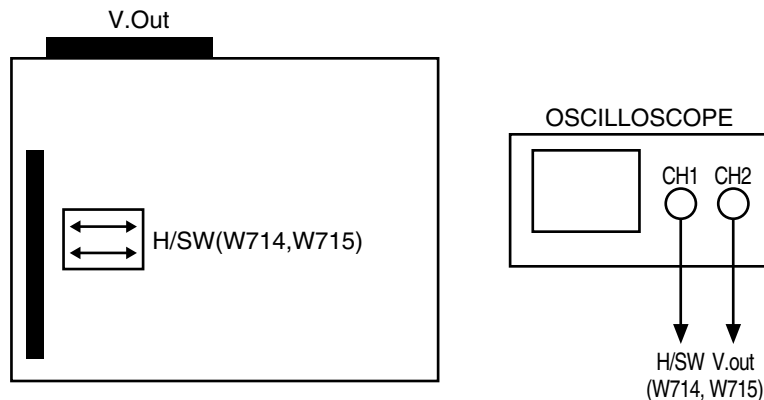
• Adjustment Procedure

- a) Insert the PAL SP Test Tape and play.
 Note - Adjust the distance of X, pressing the Tracking(+) or Tracking(-) when the "ATR" is blink after the PAL SP Test Tape is inserted.
- b) Press the Auto PG KEY on JIG Remocon(1'st) or Press "Play" key on set and "0" key on Remocon.(Then check the blink "TRK OK" (Hi-Fi Model), "ALL LIGHT"(MONO Model) on CLK/LED -TRK is a Initial)
- c) Press the Auto PG Key on JIG Remocon again (2'nd) or press "Play" key on set and "0" key on Remocon again.(Then check the blink "PG NG > PG OK" on CLK/LED(Hi-Fi Model), Then check the blink "PG waveform" on oscilloscope(MONO Model)).

• Check the PG

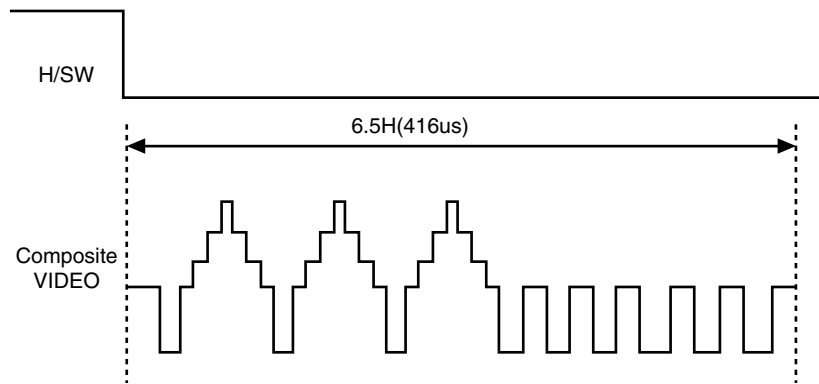
- a) Connect the CH1 of the oscilloscope to the H/SW and CD2 to the Video out for the VCR.
- b) Trigger the mixed Video Signal of CH2 to the CH1 H/SW(W714, W715), and then check the distance (time difference), which is from the selected A(B) Head point of the H/SW(W714, W715) signal to the starting point of the vertical synchronized signal, to 6.5H ± 0.5H (416µs, 1H=64.0µs).

• CONNECTION



ELECTRICAL ADJUSTMENT PROCEDURES

- **WAVEFORM**



- **Attension and Reference**

- a) The PG checking must do when RF Level is Maximum and SERVO system is Locking (MTR MODE)
- b) V.H/SW Level is 2Vpp.