

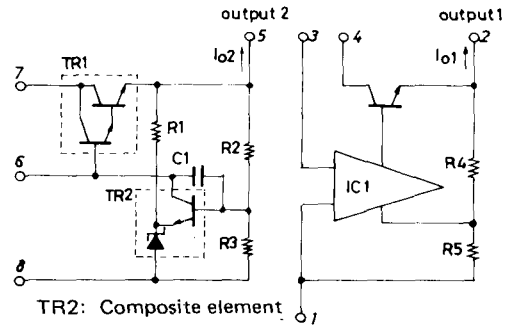
## VOLTAGE REGULATORS (thick film hybrid integrated circuit)

## ● SERIES REGULATORS

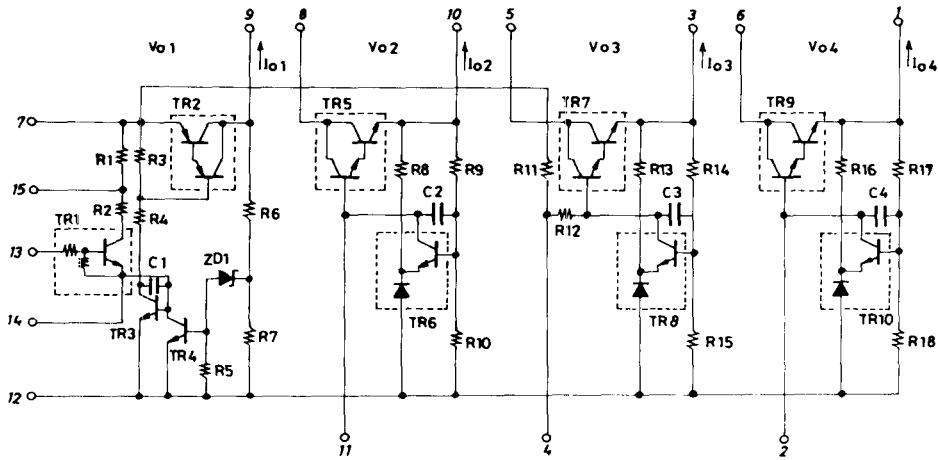
Type Number	Page	Case			Circuit Drawing No.	Circuit Functions & Applications	Main Specifications
		Package	Pins	Package No.			
STK 5 3 2 1	262	SEP	10	4039	6028	2-Output Series Regulator for VTR	Max. DC input voltage 30Vmax, output voltage output 1:9.5±0.1V (1.6A), output 2:12.0±0.3V (2.5A)
STK 5 3 2 2	262	SEP	10	4039	6028	2-Output Series Regulator for VTR	Max. DC input voltage 30Vmax, output voltage output 1:9.5±0.1V (1.6A), output 2:15.0±0.3V (2.5A)
STK 5 3 2 4	262	SEP	10	4036	6028	2-Output Series Regulator for VTR	Max. DC input voltage 30Vmax, output voltage output 1:12.0±0.1V (1.6A), output 2:12.0±0.3V (2.5A)
STK 5 3 2 5	262	SEP	10	4037	6028	2-Output Series Regulator for VTR	Max. DC input voltage 30Vmax, output voltage output 1:12.0±0.1V (1.6A), output 2:14.0±0.3V (2.5A)
STK 5 3 2 6	262	SEP	10	4037	6028	2-Output Series Regulator for VTR	Max. DC input voltage 30Vmax, output voltage output 1:12.0±0.1V (1.6A), output 2:13.0±0.3V (2.5A)
STK 5 3 2 7	262	SEP	10	4037	6028	2-Output Series Regulator for VTR	Max. DC input voltage 30Vmax, output voltage output 1:15.0±0.3V (2.5A) output 2:13.5±0.3V (1.6A)
STK 5 3 4 6	262	SEP	8	4038	6027	2-Output Series Regulator for VTR	Max. DC input voltage 30Vmax, output voltage output 1:9.8±0.1V (1.0A), output 2:11.7±0.1V (2.0A)
STK 5 3 5 2	262	SEP	8	4064	6029	2-Channel Series Regulator for VTR	Max. DC input voltage 30Vmax, output voltage output 1:6.0±0.1V (0.5A), output 2:12.0±0.1V (1.5A)
STK 5 3 5 3	262	SEP	8	4064	6029	2-Channel Series Regulator for VTR	Max. DC input voltage 30Vmax, output voltage output 1:5.1±0.1V (0.5A), output 2:12.0±0.1V (1.5A)
STK 5 3 6 1 L	263	SEP	8	4065	6030	2-Channel Series Regulator for VTR	Max. DC input voltage 30Vmax, output voltage output 1:6.0±0.1V (1.2A), output 2:12.7±0.1V (0.7A)
※STK 5 3 6 2	263	SEP	8	4063	6030	2-Channel Series Regulator for VTR	Max. DC input voltage 30Vmax, output voltage output 1:5.1±0.1V (1.2A), output 2:9.0±0.1V (0.7A)
STK 5 4 2 1	263	SEP	15	4033	6031	4-Channel Series Regulator for VTR	Max. DC input voltage 30Vmax, output voltage output 1:16.0±0.3V (AV1.0A, PK2.5A), output 2:9.55±0.1V (AV1.0A, PK2.0A), output 3:12.0±0.3V (AV1.0A, PK3.0A), output 4:12.3±0.3V (AV0.5A, PK1.0A)
STK 5 4 2 2	263	SEP	15	4033	6031	4-Channel Series Regulator for VTR	Max. DC input voltage 30Vmax, output voltage output 1:13.0±0.3V (AV1.0A, PK2.5A), output 2:9.5±0.1V (AV1.0A, PK2.0A), output 3:12.0±0.3V (AV0.5A, PK1.0A), output 4:12.0±0.3V (AV1.0A, PK2.0A)
STK 5 4 3 1 S L	263	SEP	15	4066	6032	4-Channel Series Regulator for VTR	Max. DC input voltage 30Vmax, output voltage output 1:15.0±0.3V (AV1.0A, PK2.5A), output 2:9.5±0.1V (AV1.0A, PK2.0A), output 3:12.0±0.1V (AV1.0A, PK3.0A), output 4:5.1±0.1V (0.5A)
STK 5 4 3 4	263	SEP	15	4033	6032	4-Channel Series Regulator for VTR	Max. DC input voltage 30Vmax, output voltage output 1:16.0±0.3V (AV2.0A, PK2.5A), output 2:9.0±0.1V (AV1.5A, PK2.0A), output 3:12.0±0.3V (AV1.0A, PK1.0A), output 4:5.1±0.1V (0.5A)
STK 5 4 4 1	263	SEP	15	4077	6033	3-Channel Series Regulator for VTR	Max. DC input voltage 30Vmax, output voltage output 1:12.0±0.3V (AV2.0A, PK2.5A), output 2:9.0±0.1V (AV1.0A, PK2.0A), output 3:5.5±0.1V (0.5A)



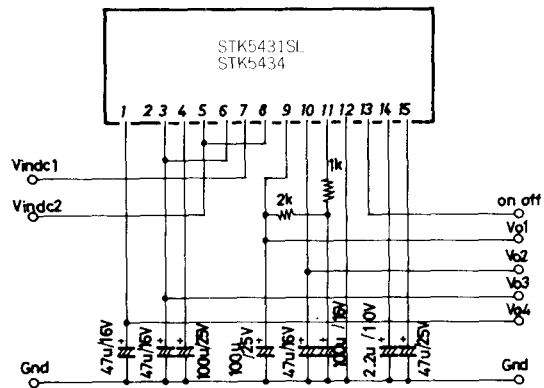
**6030:STK5360 SERIES  
EQUIVALENT CIRCUIT**



**6031:STK5420 SERIES  
EQUIVALENT CIRCUIT**



**6032:STK5431L, 5434  
APPLICATION CIRCUIT**



**6033:STK5441  
APPLICATION CIRCUIT**

