

JVC

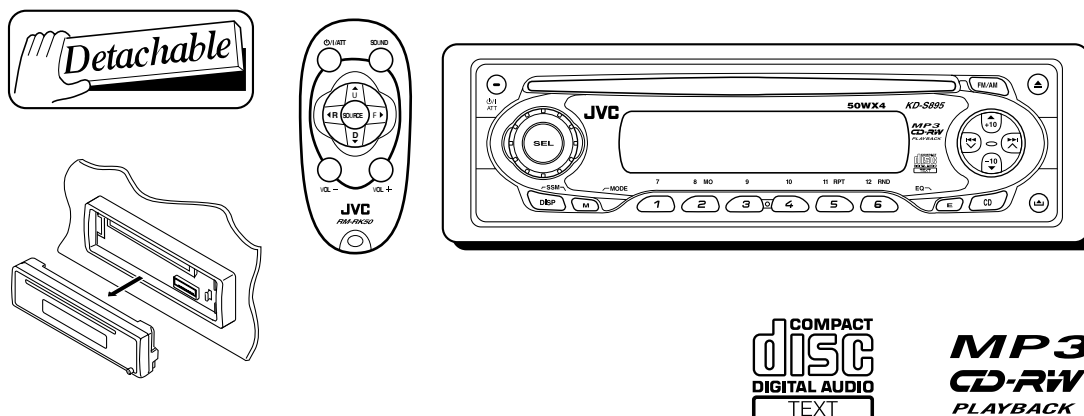
SCHEMATIC DIAGRAMS

CD RECEIVER

KD-S895

CD-ROM No.SML200303


Area suffix
U ----- Other Areas




Contents

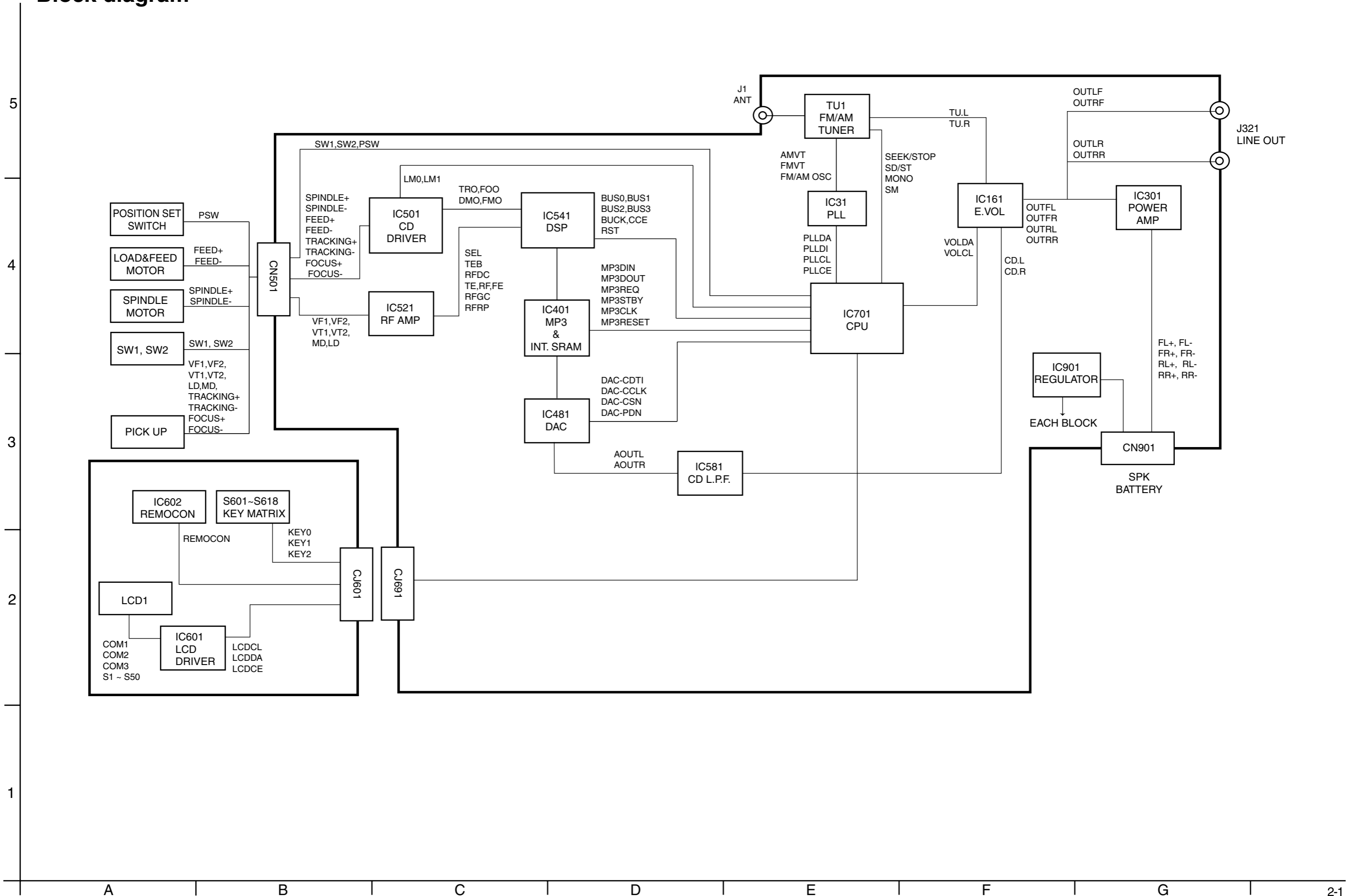
| | |
|-----------------------------------|-------|
| Block diagram | 2-1 |
| Standard schematic diagrams | 2-2 |
| Printed circuit boards | 2-5~7 |

Safety precaution

 **CAUTION** Burrs formed during molding may be left over on some parts of the chassis. Therefore, pay attention to such burrs in the case of performing repair of this system.

 **CAUTION** Please use enough caution not to see the beam directly or touch it in case of an adjustment or operation check.

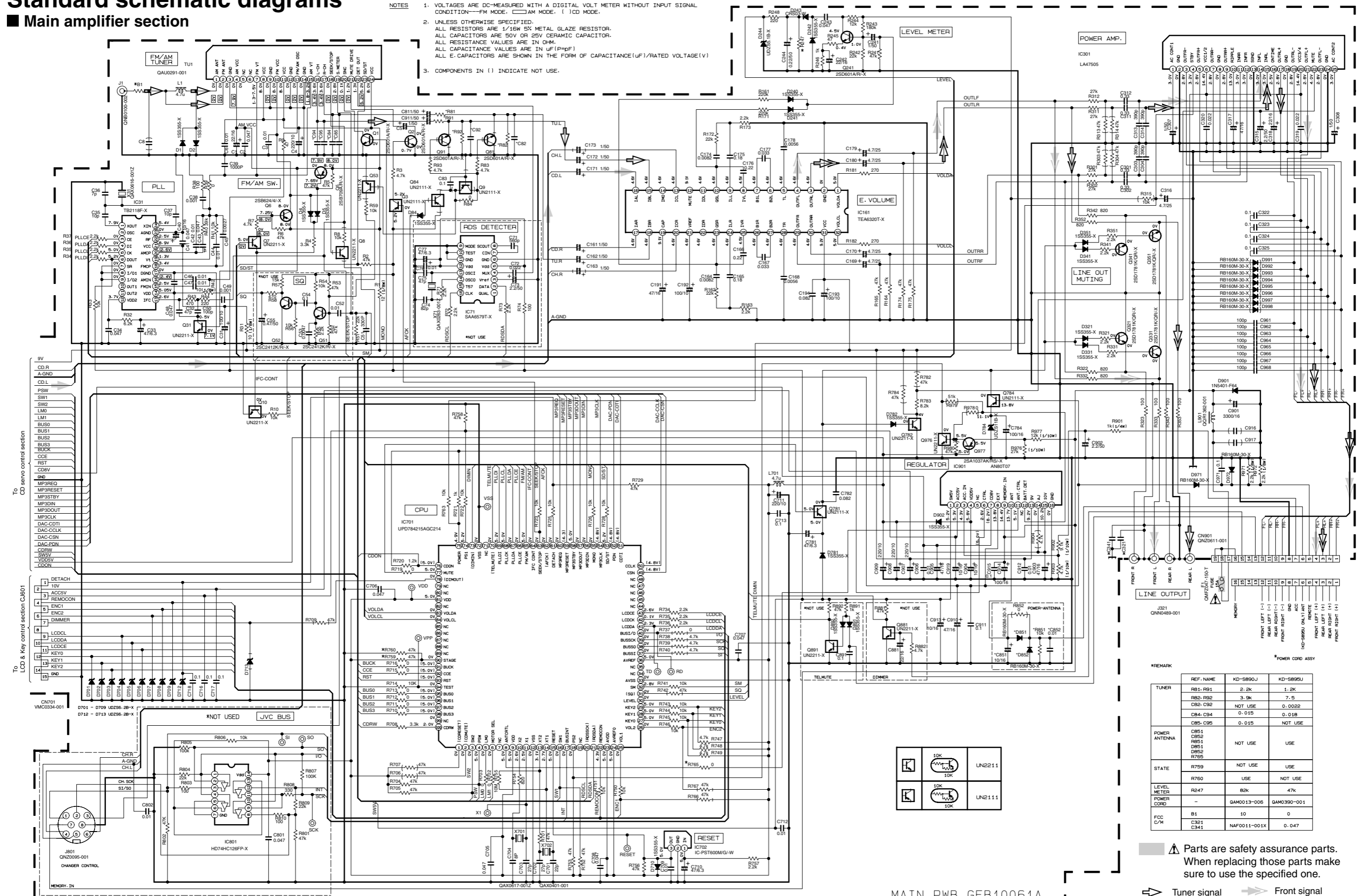
Block diagram



Standard schematic diagrams

Main amplifier section

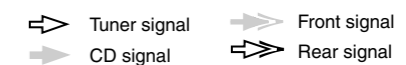
- NOTES
1. VOLTAGES ARE DC-MEASURED WITH A DIGITAL VOLT METER WITHOUT INPUT SIGNAL CONDITION—FM MODE. □ AM MODE. () CD MODE.
 2. UNLESS OTHERWISE SPECIFIED, ALL RESISTORS ARE 1/16W 5% METAL GLAZE RESISTOR. ALL CAPACITORS ARE 50V OR 25V CERAMIC CAPACITOR. ALL RESISTANCE VALUES ARE IN OHM. ALL CAPACITANCE VALUES ARE IN uF (#pF) ALL E-CAPACITORS ARE SHOWN IN THE FORM OF CAPACITANCE(uF)/RATED VOLTAGE(V)
 3. COMPONENTS IN () INDICATE NOT USE.



REMARK

| | REF. NAME | KD-S890J | KD-S895J |
|---------------|------------|--------------|-------------|
| TUNER | RB1, RB1 | 2.2k | 1.2k |
| | RB2, RB2 | 3.9k | 7.5 |
| | CB4, CB4 | NOT USE | 0.022 |
| | CB5, CB5 | 0.015 | 0.018 |
| POWER ANTENNA | CB5, CB5 | NOT USE | USE |
| | RB5, RB5 | NOT USE | USE |
| | DB5, DB5 | NOT USE | USE |
| | R765, R765 | NOT USE | USE |
| STATE | R759 | NOT USE | USE |
| | R760 | USE | NOT USE |
| LEVEL METER | R247 | 82k | 47k |
| POWER CORD | - | GAM0013-00B | GAM0390-001 |
| | FCC C/M | B1 | 10 |
| | C341 | NAF0011-001X | 0.047 |

Parts are safety assurance parts. When replacing those parts make sure to use the specified one.

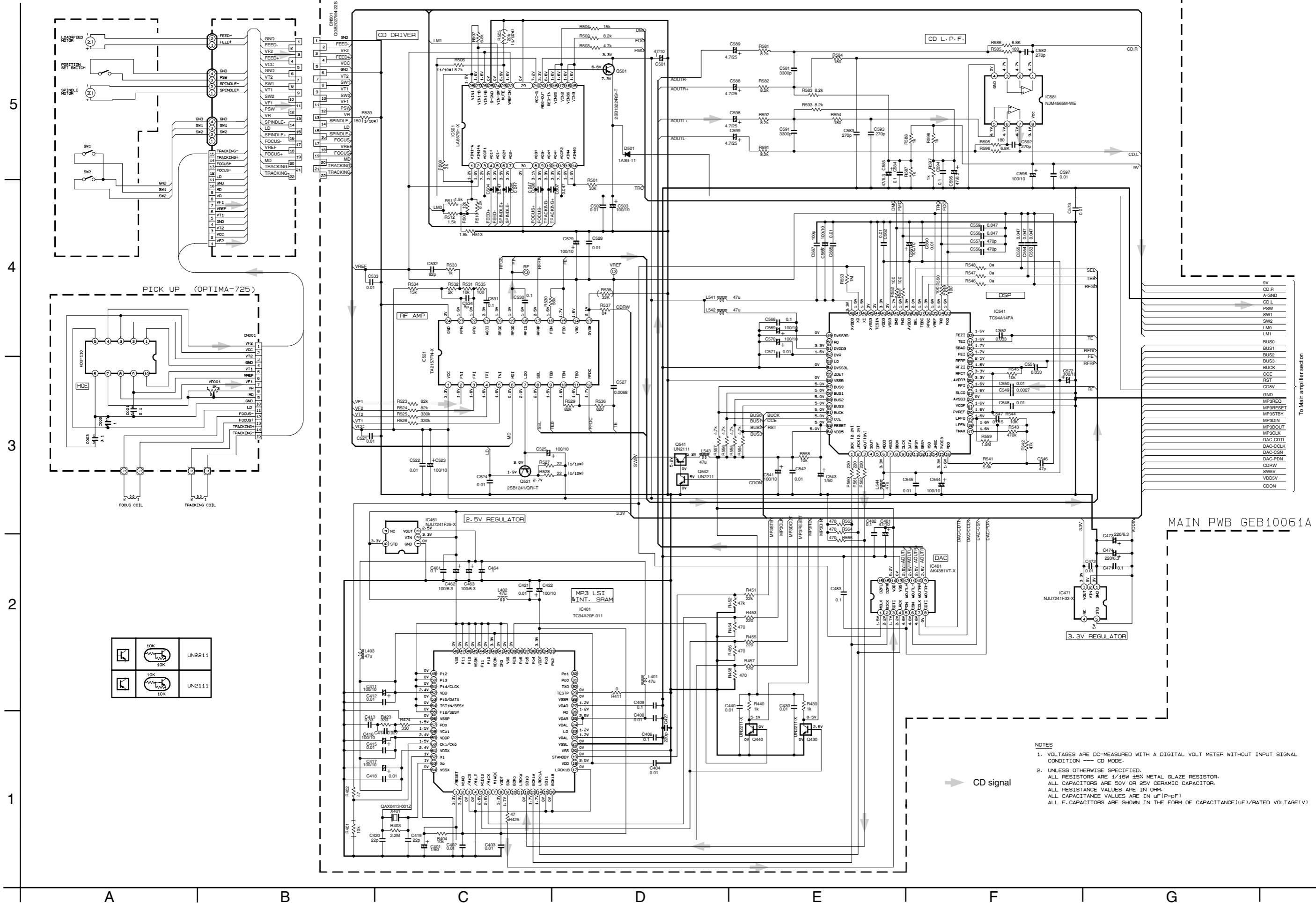


MAIN PWB GEB10061A

5
4
3
2
1

A B C 2-2 D E F G H

CD servo control section



NOTES
 1. VOLTAGES ARE DC-MEASURED WITH A DIGITAL VOLT METER WITHOUT INPUT SIGNAL CONDITION --- CD MODE.
 2. UNLESS OTHERWISE SPECIFIED, ALL RESISTORS ARE 1/16W ±5% METAL GLAZE RESISTOR. ALL CAPACITORS ARE 50V OR 25V CERAMIC CAPACITOR. ALL RESISTANCE VALUES ARE IN OHM. ALL CAPACITANCE VALUES ARE IN UF(PpF). ALL E. CAPACITORS ARE SHOWN IN THE FORM OF CAPACITANCE(UF)/RATED VOLTAGE(V)

MAIN PWB GEB10061A

To Main amplifier section

CD signal

■ LCD & Key control section

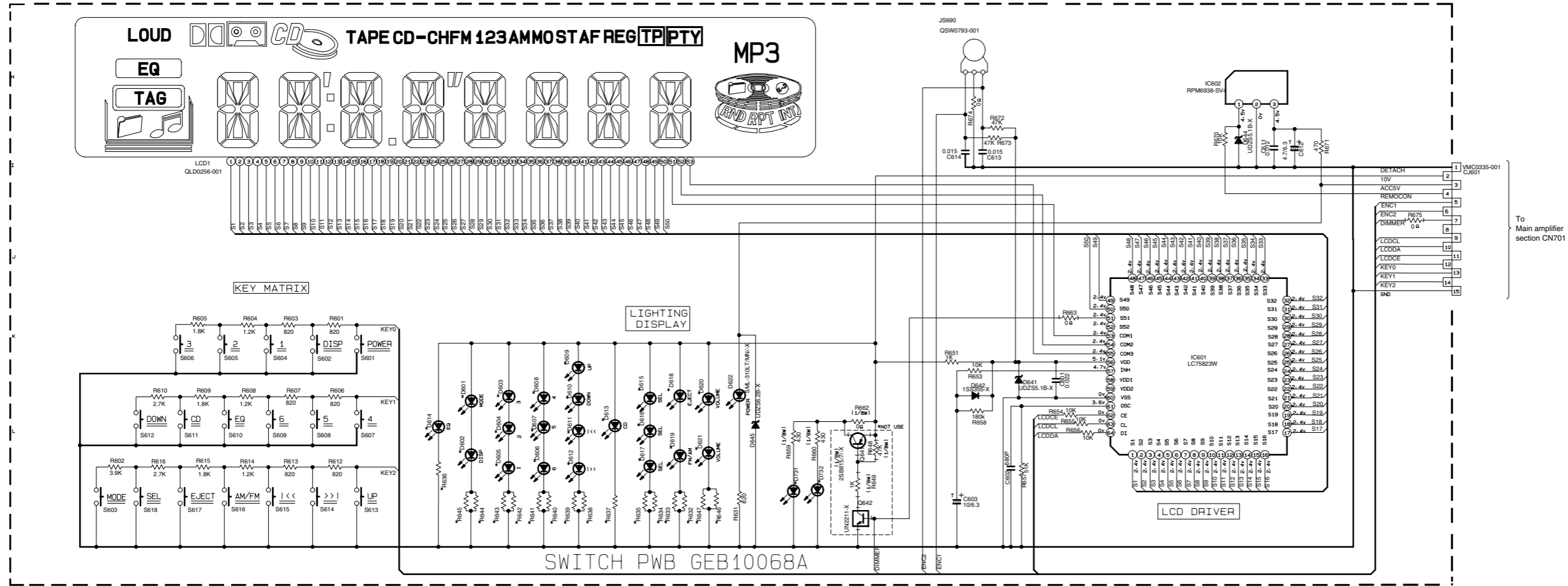
5

4

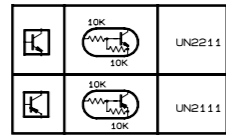
3

2

1



FRONT CIRCUIT BOARD SECTION



*REMARKS

| REF. NAME | MODEL | KD-S890J | KD-S895U |
|-----------|----------------------|----------------------|----------|
| D731-D732 | WHITE NSPW310BS/BRS/ | WHITE NSPW310BS/BRS/ | |
| D601-D621 | SML-310VT/JK/-X | LNJ308681/1-3/X | |
| R632-R633 | | 1.2k | 820 |
| R634-R635 | | 1k | 510 |
| R636-R637 | | 820 | 820 |
| R638-R639 | | 390 | 330 |
| R640-R641 | | 680 | 510 |
| R642-R643 | | 680 | 510 |
| R644-R645 | | 1k | 820 |
| R646-R647 | | 1k | 820 |

NOTES

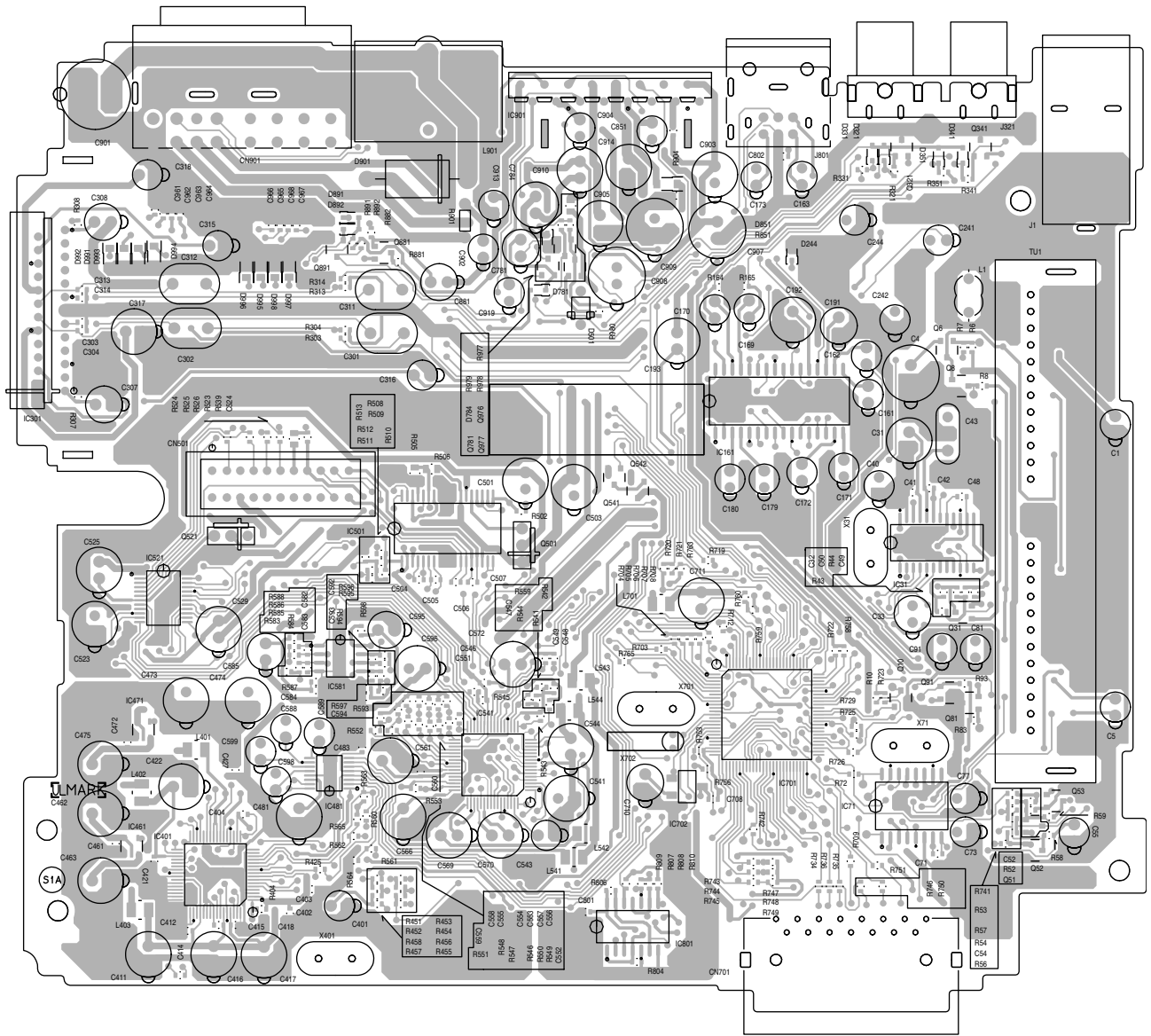
- VOLTAGES ARE DC-MEASURED WITH A DIGITAL VOLT METER WITHOUT INPUT SIGNAL.
- UNLESS OTHERWISE SPECIFIED, ALL RESISTOR ARE 1/16W ±5% METAL GLAZE RESISTOR. ALL CAPACITORS ARE 50V OR 25V CERAMIC CAPACITOR. ALL RESISTANCE VALUES ARE IN Ω-M. ALL CAPACITANCE VALUES ARE IN μF (P=pF). ALL E-CAPACITORS ARE SHOWN IN THE FORM OF CAPACITANCE(μF)/RATED VOLTAGE(V). T --- TANTALUM CAPACITOR

Printed circuit boards

■ Main board

Forward side

5
4
3
2
1



A

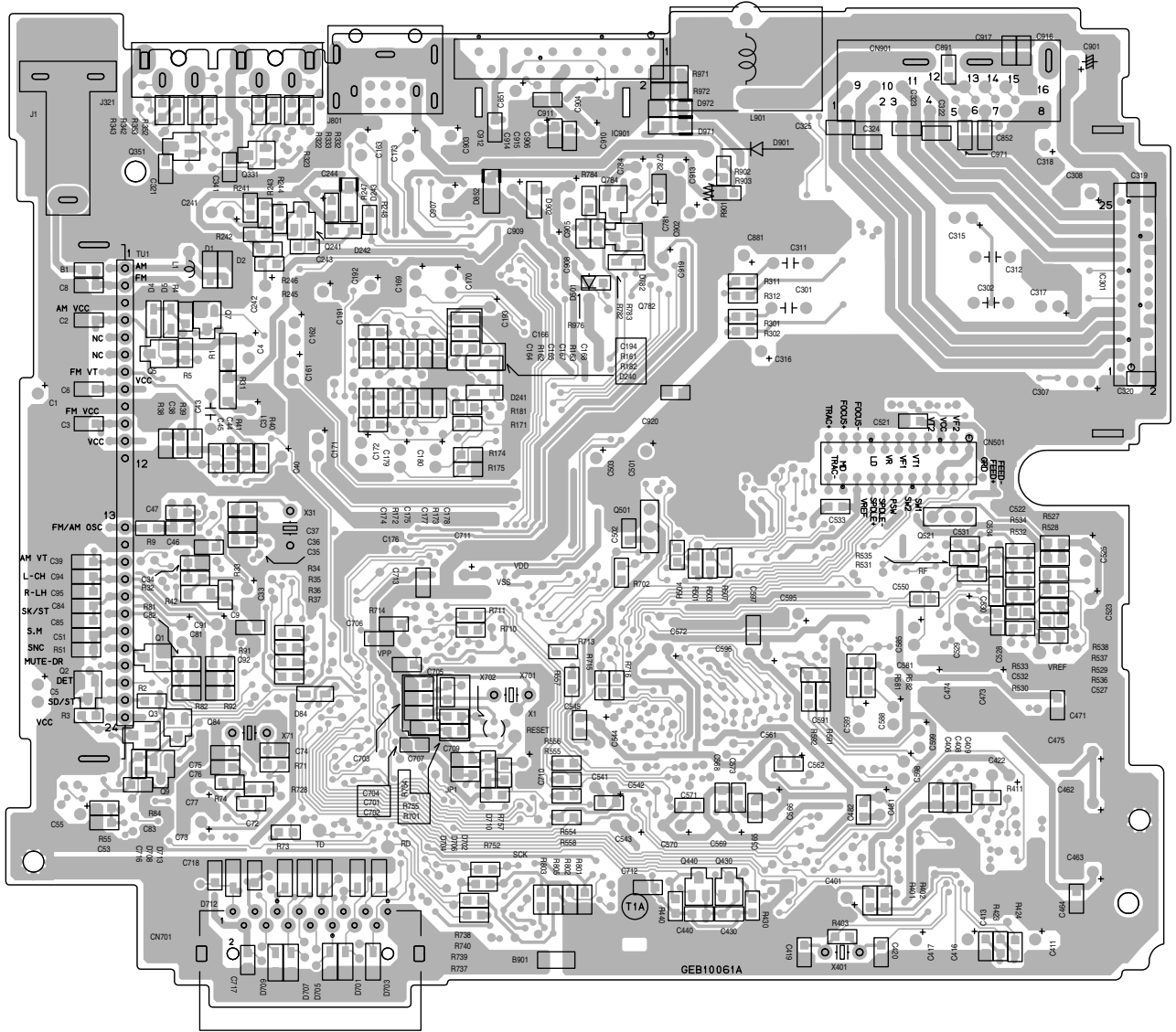
B

C

2-5

■ Main board

Reverse side



GEB10061A

5

4

3

2

1

A

B

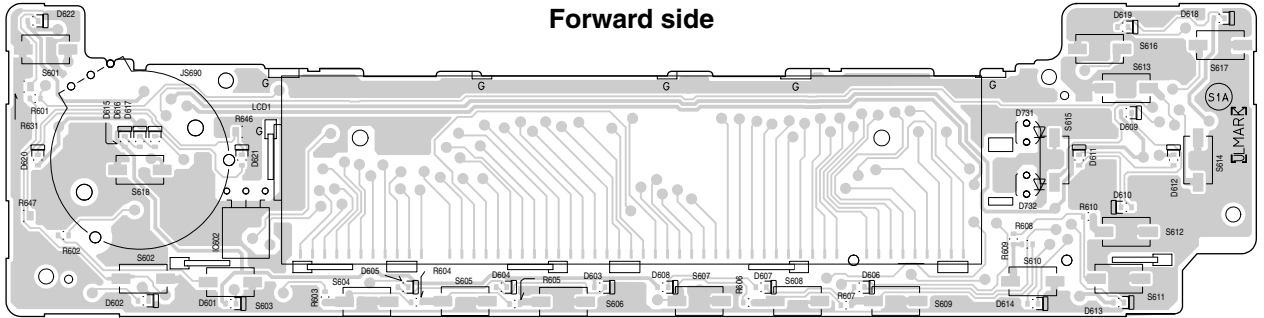
C

D

■ Front board

5

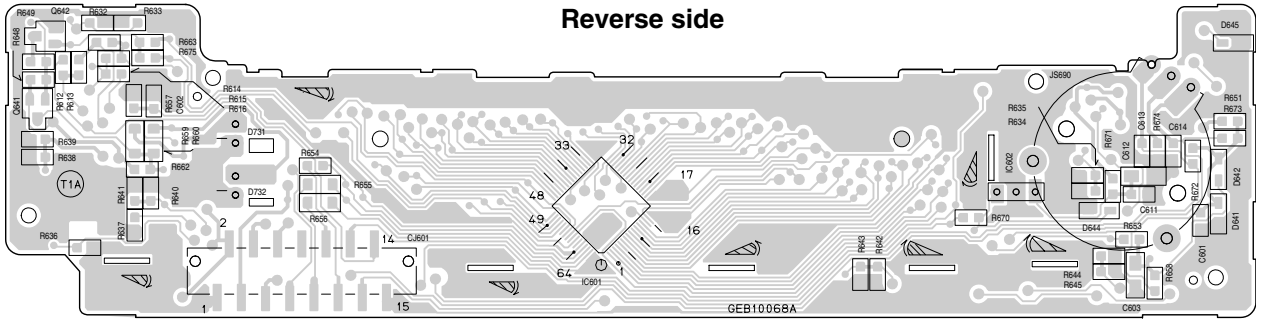
Forward side



4

3

Reverse side



2

1

A

B

C

KD-S895

JVC

VICTOR COMPANY OF JAPAN, LIMITED

AV & MULTIMEDIA COMPANY 10-1, 1Chome, Ohwatari-machi, Maebashi-city, 371-8543, Japan

(No.49798SCH)



Printed in Japan
2003/03