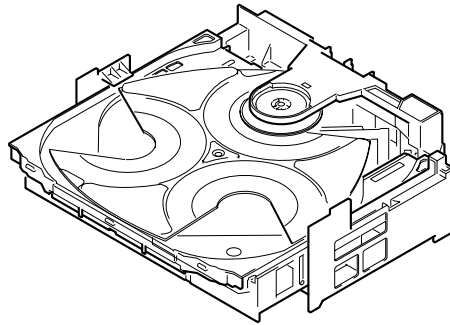


SIMPLE-2



SERVICE MANUAL

CD-R/RW MECHANISM

BASIC CD MECHANISM : BZG-6ANC

TYPE	BASIC CD MECHANISM
ZD9NC	BZG-6 ANC

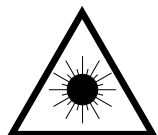
A part of contents is adequate.
Re-issuing is under request.

PROTECTION OF EYES FROM LASER BEAM DURING SERVICING

This set employs laser. Therefore, be sure to follow carefully the instructions below when servicing.

WARNING!

WHEN SERVICING, DO NOT APPROACH THE LASER EXIT WITH THE EYE TOO CLOSELY. IN CASE IT IS NECESSARY TO CONFIRM LASER BEAM EMISSION. BE SURE TO OBSERVE FROM A DISTANCE OF MORE THAN 30cm FROM THE SURFACE OF THE OBJECTIVE LENS ON THE OPTICAL PICK-UP BLOCK.



- Caution: Invisible laser radiation when open and interlocks defeated avoid exposure to beam.
- Advarsel: Usynlig laserstråling ved åbning, når sikkerhedsafbrydere er ude af funktion. Undgå udsættelse for stråling.

VAROITUS!

Laiteen Käyttäminen muulla kuin tässä käyttöohjeessa mainitulla tavalla saattaa altistaa käyttäjän turvallisuusluokan 1 ylitävälle näkymättömälle lasersäteilylle.

WARNING!

Om apparaten används på annat sätt än vad som specificeras i denna bruksanvisning, kan användaren utsättas för osynlig laserstråling, som överskrider gränsen för laserklass 1.

CAUTION

Use of controls or adjustments or performance of procedures other than those specified herein may result in hazardous radiation exposure.

ATTENTION

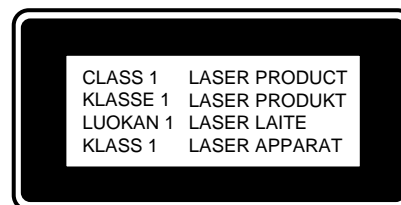
L'utilisation de commandes, réglages ou procédures autres que ceux spécifiés peut entraîner une dangereuse exposition aux radiations.

ADVARSEL!

Usynlig laserstråling ved åbning, når sikkerhedsafbrydere er ude af funktion. Undgå udsættelse for stråling.

This Compact Disc player is classified as a CLASS 1 LASER product.

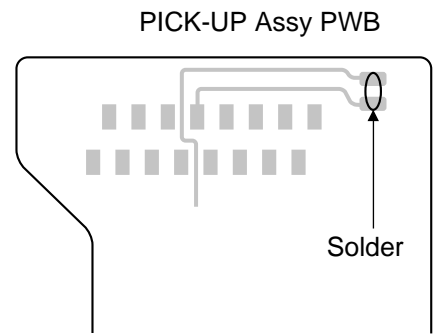
The CLASS 1 LASER PRODUCT label is located on the rear exterior.



Precaution to replace Optical block (PXR-104X-BP-0101)

Body or clothes electrostatic potential could ruin laser diode in the optical block. Be sure ground body and workbench, and use care the clothes do not touch the diode.

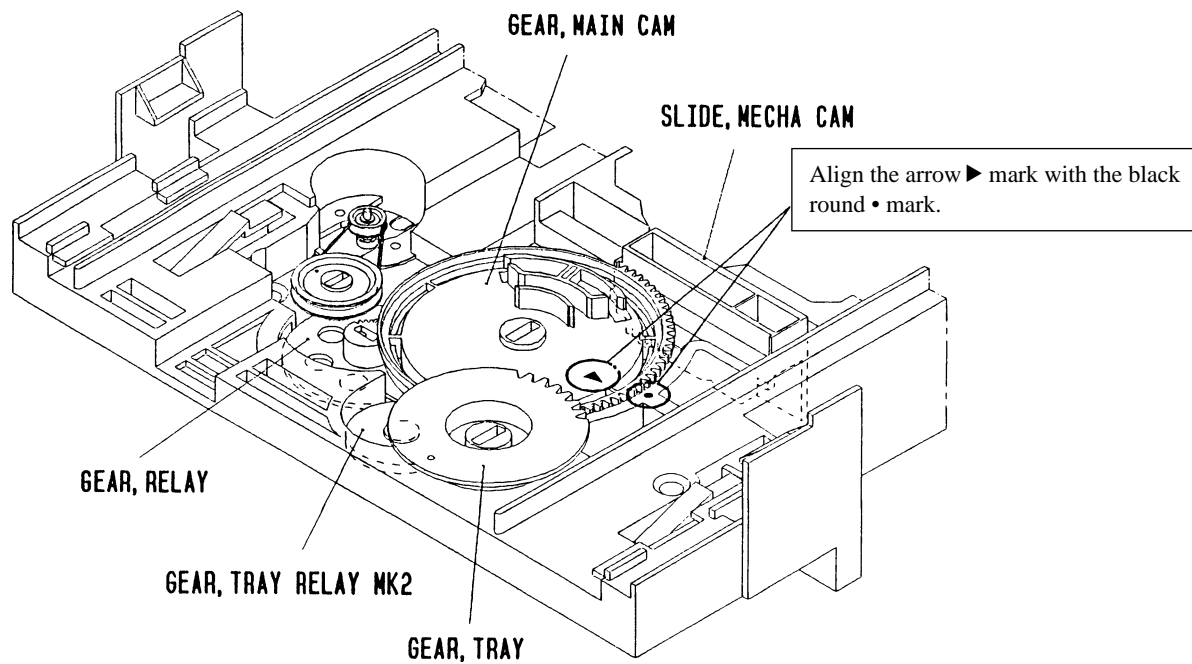
- 1) After the connection, remove solder shown in the right figure.



How to Adjust the Rotating Phase of the Gear, Main Cam

- 1) Push down the hooking catch of the CHAS. MECH, and remove the TRAY.
- 2) Align the arrow mark of the Gear, Main Cam with the black round mark of the CHAS, MECHA as shown below.
- 3) Confirm that the Slide, Mech Cam is located in the right position, then insert the TRAY gently.

Caution: If the rotating phase of the Gear, Main Cam is incorrectly adjusted, the chucking operation and tray movement will have malfunction.



ELECTRICAL PARTS LIST -1/7 (3CD C.B -1/5)

! = Δ SAFTY PARTS
 C = Components marked

All components used on this model at the production line are shown in this service manual.
 However, please note that not all components will be available as spare parts for after-sales service.
 Components marked S and O are designated as spare parts for service and will be stocked at the spare parts centers.
 Components marked X and R are not designated as spare parts for after sales service, and will not be stocked at the spare parts centers.

UNIT-NAME	!	C	REF-NO	PARTS-NO	PARTS-NAME	SUFFIX&MODEL
						BZA-2 ZD9NC
3CD C.B	O	C	0001	87-010-759-080	C-CAP,U 0.1-25 Z F	a
3CD C.B	O	C	0002	87-010-263-080	CAP,E 100-10 M 11L SME	a
3CD C.B	O	C	0003	87-A10-915-080	C-CAP,U 1000P-25 J CH	a
3CD C.B	O	C	0004	87-010-759-080	C-CAP,U 0.1-25 Z F	a
3CD C.B	O	C	0005	87-010-263-080	CAP,E 100-10 M 11L SME	a
3CD C.B	O	C	0006	87-010-405-080	CAP,E 10-50 M 11L SME	a
3CD C.B	O	C	0101	87-A10-504-080	C-CAP,U 0.047-16 K B	a
3CD C.B	O	C	0102	87-010-759-080	C-CAP,U 0.1-25 Z F	a
3CD C.B	O	C	0103	87-012-195-080	C-CAP,U 100P-50 J CH	a
3CD C.B	O	C	0104	87-012-282-080	C-CAP,U 4700P-50 K B	a
3CD C.B	O	C	0105	87-010-759-080	C-CAP,U 0.1-25 Z F	a
3CD C.B	O	C	0106	87-010-263-080	CAP,E 100-10 M 11L SME	a
3CD C.B	O	C	0107	87-010-263-040	CAP,E 100-10 M 11L SME	a
3CD C.B	O	C	0108	87-010-759-080	C-CAP,U 0.1-25 Z F	a
3CD C.B	O	C	0109	87-010-263-040	CAP,E 100-10 M 11L SME	a
3CD C.B	O	C	0110	87-010-405-040	CAP,E 10-50 M 11L SME	a
3CD C.B	O	C	0111	87-010-401-080	CAP,E 1-50 M 11L SME	a
3CD C.B	O	C	0114	87-012-188-080	C-CAP,U 47P-50 J CH	a
3CD C.B	O	C	0115	87-010-759-080	C-CAP,U 0.1-25 Z F	a
3CD C.B	O	C	0116	87-010-263-040	CAP,E 100-10 M 11L SME	a
						BZA-2 ZD9NC
3CD C.B	O	C	0117	87-010-263-080	CAP,E 100-10 M 11L SME	a
3CD C.B	O	C	0118	87-010-759-080	C-CAP,U 0.1-25 Z F	a
3CD C.B	O	C	0121	87-010-263-080	CAP,E 100-10 M 11L SME	a
3CD C.B	O	C	0122	87-010-759-080	C-CAP,U 0.1-25 Z F	a
3CD C.B	O	C	0123	87-012-169-080	C-CAP,U 7P-50 D CH	a
3CD C.B	O	C	0124	87-012-172-080	C-CAP,U 10P-50 D CH	a
3CD C.B	O	C	0126	87-010-403-080	CAP,E 3.3-50 M 11L SME	a
3CD C.B	O	C	0127	87-010-759-080	C-CAP,U 0.1-25 Z F	a
3CD C.B	O	C	0128	87-A10-504-080	C-CAP,U 0.047-16 K B	a
3CD C.B	O	C	0129	87-010-403-040	CAP,E 3.3-50 M 11L SME	a
3CD C.B	O	C	0130	87-010-759-080	C-CAP,U 0.1-25 Z F	a
3CD C.B	O	C	0131	87-010-759-080	C-CAP,U 0.1-25 Z F	a
3CD C.B	O	C	0132	87-010-263-040	CAP,E 100-10 M 11L SME	a
3CD C.B	O	C	0133	87-010-405-080	CAP,E 10-50 M 11L SME	a
3CD C.B	O	C	0134	87-010-759-080	C-CAP,U 0.1-25 Z F	a
3CD C.B	O	C	0135	87-010-260-080	CAP,E 47-25 M 11L SME	a
3CD C.B	O	C	0136	87-010-759-080	C-CAP,U 0.1-25 Z F	a
3CD C.B	O	C	0137	87-A10-915-080	C-CAP,U 1000P-25 J CH	a
3CD C.B	O	C	0138	87-010-759-080	C-CAP,U 0.1-25 Z F	a
3CD C.B	O	C	0160	87-016-669-080	C-CAP,S 0.1-25 K B	a
						BZA-2 ZD9NC
3CD C.B	O	C	0161	87-A10-826-080	C-CAP,S 1-10 K B	a
3CD C.B	O	C	0203	87-010-112-080	CAP,E 100-16 M 11L SME	a
3CD C.B	O	C	0204	87-010-759-080	C-CAP,U 0.1-25 Z F	a
3CD C.B	O	C	0205	87-010-263-040	CAP,E 100-10 M 11L SME	a
3CD C.B	O	C	0208	87-010-759-080	C-CAP,U 0.1-25 Z F	a
3CD C.B	O	C	0212	87-010-405-040	CAP,E 10-50 M 11L SME	a
3CD C.B	O	C	0213	87-010-759-080	C-CAP,U 0.1-25 Z F	a
3CD C.B	O	C	0214	87-010-759-080	C-CAP,U 0.1-25 Z F	a
3CD C.B	O	C	0301	87-010-382-080	CAP,E 22-25 M 11L SME	a
3CD C.B	O	C	0302	87-010-759-080	C-CAP,U 0.1-25 Z F	a
3CD C.B	O	C	0303	87-010-260-080	CAP,E 47-25 M 11L SME	a
3CD C.B	O	C	0304	87-010-759-080	C-CAP,U 0.1-25 Z F	a
3CD C.B	O	C	0305	87-A10-915-080	C-CAP,U 1000P-25 J CH	a
3CD C.B	O	C	0401	87-012-195-080	C-CAP,U 100P-50 J CH	a
3CD C.B	O	C	0402	87-012-195-080	C-CAP,U 100P-50 J CH	a
3CD C.B	O	C	0403	87-012-195-080	C-CAP,U 100P-50 J CH	a
3CD C.B	O	C	0404	87-012-195-080	C-CAP,U 100P-50 J CH	a
3CD C.B	O	C	0405	87-012-195-080	C-CAP,U 100P-50 J CH	a
3CD C.B	O	CN	0001	87-A60-429-010	CONN,16P H TOC-A	a
3CD C.B	O	CN	0201	87-099-199-010	CONN,6P H BLK 6216	a

ELECTRICAL PARTS LIST -2/7 (3CD C.B -2/5)

! = Δ SAFTY PARTS
 C = Components marked

All components used on this model at the production line are shown in this service manual.
 However, please note that not all components will be available as spare parts for after-sales service.
 Components marked S and O are designated as spare parts for service and will be stocked at the spare parts centers.
 Components marked X and R are not designated as spare parts for after sales service, and will not be stocked at the spare parts centers.

UNIT-NAME	!	C	REF-NO	PARTS-NO	PARTS-NAME	SUFFIX&MODEL
						BZA-2 ZD9NC
3CD C.B			O CN 0202	87-A60-130-010	CONN, 5P V FE	a
3CD C.B			O CN 0301	87-A60-154-010	CONN, 6P H FE	a
3CD C.B			O CN 0401	87-099-201-010	CONN, 8P H BLK 6216	a
3CD C.B			S D 0101	87-A40-743-080	ZENER, UZ4.3BSA	a
3CD C.B			S D 0102	87-A40-747-080	ZENER, UZ5.1BSB	a
3CD C.B			S D 0103	87-A40-270-080	C-DIODE, MC2838	a
3CD C.B			S D 0301	87-A40-753-080	ZENER, UZ6.8BSB	a
3CD C.B			S D 0303	87-020-465-080	DIODE, 1SS133	a
3CD C.B			S D 0304	87-020-465-080	DIODE, 1SS133	a
3CD C.B			S IC 0101	87-A21-821-130	C-IC, LC78645NE	a
3CD C.B			S IC 0201	87-A21-414-010	IC, BA5927S	a
3CD C.B			X JR 0121	88-129-000-080	C-JUMPER, 3216	a
3CD C.B			X JR 0201	88-108-000-080	C-JUMPER, U	a
3CD C.B			X JR 0202	88-108-000-080	C-JUMPER, U	a
3CD C.B			X JR 0203	88-108-000-080	C-JUMPER, U	a
3CD C.B			X JR 0204	88-108-000-080	C-JUMPER, U	a
3CD C.B			X JR 0401	88-129-000-080	C-JUMPER, 3216	a
3CD C.B			X JR 0402	88-129-000-080	C-JUMPER, 3216	a
3CD C.B			X JR 0403	88-108-000-080	C-JUMPER, U	a
3CD C.B			X JW 0001	88-100-000-010	PLATING-JW, 0.58 SN95	a
						BZA-2 ZD9NC
3CD C.B			X JW 0002	88-100-000-010	PLATING-JW, 0.58 SN95	a
3CD C.B			X JW 0004	88-100-000-010	PLATING-JW, 0.58 SN95	a
3CD C.B			X JW 0005	88-100-000-010	PLATING-JW, 0.58 SN95	a
3CD C.B			X JW 0006	88-100-000-010	PLATING-JW, 0.58 SN95	a
3CD C.B			X JW 0007	88-100-000-010	PLATING-JW, 0.58 SN95	a
3CD C.B			X JW 0008	88-100-000-010	PLATING-JW, 0.58 SN95	a
3CD C.B			X JW 0009	88-100-000-010	PLATING-JW, 0.58 SN95	a
3CD C.B			X JW 0101	88-100-000-010	PLATING-JW, 0.58 SN95	a
3CD C.B			X JW 0102	88-100-000-010	PLATING-JW, 0.58 SN95	a
3CD C.B			X JW 0103	88-100-000-010	PLATING-JW, 0.58 SN95	a
3CD C.B			X JW 0104	88-100-000-010	PLATING-JW, 0.58 SN95	a
3CD C.B			X JW 0105	88-100-000-010	PLATING-JW, 0.58 SN95	a
3CD C.B			X JW 0106	88-100-000-010	PLATING-JW, 0.58 SN95	a
3CD C.B			X JW 0107	88-100-000-010	PLATING-JW, 0.58 SN95	a
3CD C.B			X JW 0108	88-100-000-010	PLATING-JW, 0.58 SN95	a
3CD C.B			X JW 0109	88-100-000-010	PLATING-JW, 0.58 SN95	a
3CD C.B			X JW 0110	88-100-000-010	PLATING-JW, 0.58 SN95	a
3CD C.B			X JW 0112	88-100-000-010	PLATING-JW, 0.58 SN95	a
3CD C.B			X JW 0113	88-100-000-010	PLATING-JW, 0.58 SN95	a
3CD C.B			X JW 0114	88-100-000-010	PLATING-JW, 0.58 SN95	a
						BZA-2 ZD9NC
3CD C.B			X JW 0115	88-100-000-010	PLATING-JW, 0.58 SN95	a
3CD C.B			X JW 0116	88-100-000-010	PLATING-JW, 0.58 SN95	a
3CD C.B			X JW 0117	88-100-000-010	PLATING-JW, 0.58 SN95	a
3CD C.B			X JW 0121	88-100-000-010	PLATING-JW, 0.58 SN95	a
3CD C.B			X JW 0124	88-100-000-010	PLATING-JW, 0.58 SN95	a
3CD C.B			X JW 0125	88-100-000-010	PLATING-JW, 0.58 SN95	a
3CD C.B			X JW 0126	88-100-000-010	PLATING-JW, 0.58 SN95	a
3CD C.B			X JW 0131	88-100-000-010	PLATING-JW, 0.58 SN95	a
3CD C.B			X JW 0133	88-100-000-010	PLATING-JW, 0.58 SN95	a
3CD C.B			X JW 0134	88-100-000-010	PLATING-JW, 0.58 SN95	a
3CD C.B			X JW 0151	88-100-000-010	PLATING-JW, 0.58 SN95	a
3CD C.B			X JW 0152	88-100-000-010	PLATING-JW, 0.58 SN95	a
3CD C.B			X JW 0153	88-100-000-010	PLATING-JW, 0.58 SN95	a
3CD C.B			X JW 0201	88-100-000-010	PLATING-JW, 0.58 SN95	a
3CD C.B			X JW 0202	88-100-000-010	PLATING-JW, 0.58 SN95	a
3CD C.B			X JW 0203	88-100-000-010	PLATING-JW, 0.58 SN95	a
3CD C.B			X JW 0204	88-100-000-010	PLATING-JW, 0.58 SN95	a
3CD C.B			X JW 0205	88-100-000-010	PLATING-JW, 0.58 SN95	a
3CD C.B			X JW 0206	88-100-000-010	PLATING-JW, 0.58 SN95	a
3CD C.B			X JW 0207	88-100-000-010	PLATING-JW, 0.58 SN95	a

ELECTRICAL PARTS LIST -3/7 (3CD C.B -3/5)

! = Δ SAFTY PARTS
 C = Components marked

All components used on this model at the production line are shown in this service manual.
 However, please note that not all components will be available as spare parts for after-sales service.
 Components marked S and O are designated as spare parts for service and will be stocked at the spare parts centers.
 Components marked X and R are not designated as spare parts for after sales service, and will not be stocked at the spare parts centers.

UNIT-NAME	! C	REF-NO	PARTS-NO	PARTS-NAME	SUFFIX&MODEL
					BZA-2 ZD9NC
3CD C.B	X	JW 0210	88-100-000-010	PLATING-JW, 0.58 SN95	a
3CD C.B	X	JW 0211	88-100-000-010	PLATING-JW, 0.58 SN95	a
3CD C.B	X	JW 0212	88-100-000-010	PLATING-JW, 0.58 SN95	a
3CD C.B	X	JW 0213	88-100-000-010	PLATING-JW, 0.58 SN95	a
3CD C.B	X	JW 0214	88-100-000-010	PLATING-JW, 0.58 SN95	a
3CD C.B	X	JW 0215	88-100-000-010	PLATING-JW, 0.58 SN95	a
3CD C.B	X	JW 0217	88-100-000-010	PLATING-JW, 0.58 SN95	a
3CD C.B	X	JW 0218	88-100-000-010	PLATING-JW, 0.58 SN95	a
3CD C.B	X	JW 0219	88-100-000-010	PLATING-JW, 0.58 SN95	a
3CD C.B	X	JW 0220	88-100-000-010	PLATING-JW, 0.58 SN95	a
3CD C.B	X	JW 0221	88-100-000-010	PLATING-JW, 0.58 SN95	a
3CD C.B	X	JW 0222	88-100-000-010	PLATING-JW, 0.58 SN95	a
3CD C.B	X	JW 0223	88-100-000-010	PLATING-JW, 0.58 SN95	a
3CD C.B	X	JW 0224	88-100-000-010	PLATING-JW, 0.58 SN95	a
3CD C.B	X	JW 0225	88-100-000-010	PLATING-JW, 0.58 SN95	a
3CD C.B	X	JW 0226	88-100-000-010	PLATING-JW, 0.58 SN95	a
3CD C.B	X	JW 0227	88-100-000-010	PLATING-JW, 0.58 SN95	a
3CD C.B	X	JW 0228	88-100-000-010	PLATING-JW, 0.58 SN95	a
3CD C.B	X	JW 0229	88-100-000-010	PLATING-JW, 0.58 SN95	a
3CD C.B	X	JW 0230	88-100-000-010	PLATING-JW, 0.58 SN95	a
					BZA-2 ZD9NC
3CD C.B	X	JW 0231	88-100-000-010	PLATING-JW, 0.58 SN95	a
3CD C.B	X	JW 0232	88-100-000-010	PLATING-JW, 0.58 SN95	a
3CD C.B	X	JW 0234	88-100-000-010	PLATING-JW, 0.58 SN95	a
3CD C.B	X	JW 0236	88-100-000-010	PLATING-JW, 0.58 SN95	a
3CD C.B	X	JW 0237	88-100-000-010	PLATING-JW, 0.58 SN95	a
3CD C.B	X	JW 0301	88-100-000-010	PLATING-JW, 0.58 SN95	a
3CD C.B	X	JW 0302	88-100-000-010	PLATING-JW, 0.58 SN95	a
3CD C.B	X	JW 0303	88-100-000-010	PLATING-JW, 0.58 SN95	a
3CD C.B	X	JW 0304	88-100-000-010	PLATING-JW, 0.58 SN95	a
3CD C.B	X	JW 0305	88-100-000-010	PLATING-JW, 0.58 SN95	a
3CD C.B	X	JW 0306	88-100-000-010	PLATING-JW, 0.58 SN95	a
3CD C.B	X	JW 0401	88-100-000-010	PLATING-JW, 0.58 SN95	a
3CD C.B	O	L 0101	87-005-469-080	COIL,4.7UH J FLR50	a
3CD C.B	S	Q 0001	87-026-609-080	TR,KTA1266GR	a
3CD C.B	S	Q 0101	87-026-610-080	TR,KTC3198GR	a
3CD C.B	S	Q 0102	87-A30-073-080	C-TR,RT1N 141C	a
3CD C.B	S	Q 0210	87-026-609-080	TR,KTA1266GR	a
3CD C.B	S	Q 0301	87-A30-076-080	C-TR,2SC3052F	a
3CD C.B	S	Q 0302	87-A30-515-080	TR,2SA19790/Y	a
3CD C.B	S	Q 0303	87-A30-515-080	TR,2SA19790/Y	a
					BZA-2 ZD9NC
3CD C.B	S	Q 0304	87-A30-515-080	TR,2SA19790/Y	a
3CD C.B	S	Q 0305	87-A30-515-080	TR,2SA19790/Y	a
3CD C.B	S	Q 0306	87-A30-515-080	TR,2SA19790/Y	a
3CD C.B	X	R 0001	88-108-333-080	C-RES,U 33K-1/16W J	a
3CD C.B	X	R 0002	88-108-153-080	C-RES,U 15K-1/16W J	a
3CD C.B	X	R 0003	88-108-153-080	C-RES,U 15K-1/16W J	a
3CD C.B	X	R 0004	88-108-153-080	C-RES,U 15K-1/16W J	a
3CD C.B	X	R 0005	88-108-153-080	C-RES,U 15K-1/16W J	a
3CD C.B	X	R 0006	88-108-333-080	C-RES,U 33K-1/16W J	a
3CD C.B	X	R 0007	88-108-181-080	C-RES,U 180-1/16W J	a
3CD C.B	X	R 0008	88-108-339-080	C-RES,U 3.3-1/16W J	a
3CD C.B	X	R 0010	88-129-000-080	C-JUMPER, 3216	a
3CD C.B	X	R 0101	88-108-103-080	C-RES,U 10K-1/16W J	a
3CD C.B	X	R 0102	88-108-273-080	C-RES,U 27K-1/16W J	a
3CD C.B	X	R 0103	88-108-331-080	C-RES,U 330-1/16W J	a
3CD C.B	O	R 0104	87-012-278-080	C-CAP,U 2200P-50 K B	a
3CD C.B	X	R 0105	88-108-000-080	C-JUMPER,U	a
3CD C.B	O	R 0106	87-012-274-080	C-CAP,U 1000P-50 K B	a
3CD C.B	X	R 0107	88-108-000-080	C-JUMPER,U	a
3CD C.B	X	R 0108	88-118-000-080	C-JUMPER,S	a

ELECTRICAL PARTS LIST -4/7 (3CD C.B -4/5)

! = Δ SAFTY PARTS
 C = Components marked

All components used on this model at the production line are shown in this service manual.
 However, please note that not all components will be available as spare parts for after-sales service.
 Components marked S and O are designated as spare parts for service and will be stocked at the spare parts centers.
 Components marked X and R are not designated as spare parts for after sales service, and will not be stocked at the spare parts centers.

UNIT-NAME	!	C	REF-NO	PARTS-NO	PARTS-NAME	SUFFIX&MODEL
						BZA-2 ZD9NC
3CD C.B	X	R	0110	88-108-221-080	C-RES,U 220-1/16W J	a
3CD C.B	X	R	0111	88-108-470-080	C-RES,U 47-1/16W J	a
3CD C.B	X	R	0112	88-108-102-080	C-RES,U 1K-1/16W J	a
3CD C.B	X	R	0113	88-108-102-080	C-RES,U 1K-1/16W J	a
3CD C.B	X	R	0114	88-108-102-080	C-RES,U 1K-1/16W J	a
3CD C.B	X	R	0115	88-108-102-080	C-RES,U 1K-1/16W J	a
3CD C.B	X	R	0116	88-108-102-080	C-RES,U 1K-1/16W J	a
3CD C.B	X	R	0117	88-108-102-080	C-RES,U 1K-1/16W J	a
3CD C.B	X	R	0118	88-108-224-080	C-RES,U 220K-1/16W J	a
3CD C.B	X	R	0119	88-108-681-080	C-RES,U 680-1/16W J	a
3CD C.B	X	R	0120	88-108-681-080	C-RES,U 680-1/16W J	a
3CD C.B	X	R	0121	88-108-123-080	C-RES,U 12K-1/16W J	a
3CD C.B	X	R	0122	88-108-122-080	C-RES,U 1.2K-1/16W J	a
3CD C.B	X	R	0123	88-118-152-080	C-RES,S 1.5K-1/10W J	a
3CD C.B	X	R	0124	88-118-152-080	C-RES,S 1.5K-1/10W J	a
3CD C.B	X	R	0125	88-118-102-080	C-RES,S 1K-1/10W J	a
3CD C.B	X	R	0126	88-118-101-080	C-RES,S 100-1/10W J	a
3CD C.B	X	R	0127	88-118-100-080	C-RES,S 10-1/10W J	a
3CD C.B	X	R	0128	88-100-000-010	PLATING-JW, 0.58 SN95	a
3CD C.B	X	R	0129	88-129-000-080	C-JUMPER, 3216	a
						BZA-2 ZD9NC
3CD C.B	X	R	0130	88-108-103-080	C-RES,U 10K-1/16W J	a
3CD C.B	X	R	0131	88-108-473-080	C-RES,U 47K-1/16W J	a
3CD C.B	X	R	0132	88-118-470-080	C-RES,S 47-1/10W J	a
3CD C.B	X	R	0133	88-118-152-080	C-RES,S 1.5K-1/10W J	a
3CD C.B	X	R	0134	88-118-152-080	C-RES,S 1.5K-1/10W J	a
3CD C.B	X	R	0137	88-108-102-080	C-RES,U 1K-1/16W J	a
3CD C.B	X	R	0138	88-108-102-080	C-RES,U 1K-1/16W J	a
3CD C.B	X	R	0151	88-108-101-080	C-RES,U 100-1/16W J	a
3CD C.B	X	R	0152	88-108-101-080	C-RES,U 100-1/16W J	a
3CD C.B	X	R	0160	88-108-103-080	C-RES,U 10K-1/16W J	a
3CD C.B	X	R	0161	88-121-153-080	RES,15K-1/8W J	a
3CD C.B	X	R	0203	88-108-473-080	C-RES,U 47K-1/16W J	a
3CD C.B	X	R	0209	88-108-472-080	C-RES,U 4.7K-1/16W J	a
3CD C.B	X	R	0212	88-108-182-080	C-RES,U 1.8K-1/16W J	a
3CD C.B	X	R	0213	88-108-392-080	C-RES,U 3.9K-1/16W J	a
3CD C.B	X	R	0216	88-108-273-080	C-RES,U 27K-1/16W J	a
3CD C.B	X	R	0219	88-108-273-080	C-RES,U 27K-1/16W J	a
3CD C.B	X	R	0220	88-108-103-080	C-RES,U 10K-1/16W J	a
3CD C.B	X	R	0221	88-108-822-080	C-RES,U 8.2K-1/16W J	a
3CD C.B	X	R	0222	88-108-562-080	C-RES,U 5.6K-1/16W J	a
						BZA-2 ZD9NC
3CD C.B	X	R	0223	88-108-562-080	C-RES,U 5.6K-1/16W J	a
3CD C.B	X	R	0225	88-108-123-080	C-RES,U 12K-1/16W J	a
3CD C.B	X	R	0226	88-108-123-080	C-RES,U 12K-1/16W J	a
3CD C.B	X	R	0227	88-108-123-080	C-RES,U 12K-1/16W J	a
3CD C.B	X	R	0228	88-108-103-080	C-RES,U 10K-1/16W J	a
3CD C.B	X	R	0229	88-118-339-080	C-RES,S 3.3-1/10W J	a
3CD C.B	X	R	0230	88-118-101-080	C-RES,S 100-1/10W J	a
3CD C.B	X	R	0231	88-118-101-080	C-RES,S 100-1/10W J	a
3CD C.B	X	R	0233	88-121-221-080	RES,220-1/8W J	a
3CD C.B	X	R	0301	88-128-102-080	C-RES, 1K-1/8W J	a
3CD C.B	X	R	0302	88-118-101-080	C-RES,S 100-1/10W J	a
3CD C.B	X	R	0303	88-118-561-080	C-RES,S 560-1/10W J	a
3CD C.B	X	R	0304	88-118-392-080	C-RES,S 3.9K-1/10W J	a
3CD C.B	X	R	0305	88-128-100-080	C-RES, 10-1/8W J	a
3CD C.B	X	R	0306	88-128-100-080	C-RES, 10-1/8W J	a
3CD C.B	X	R	0307	88-128-100-080	C-RES, 10-1/8W J	a
3CD C.B	X	R	0308	88-128-100-080	C-RES, 10-1/8W J	a
3CD C.B	X	R	0309	88-128-100-080	C-RES, 10-1/8W J	a
3CD C.B	X	R	0310	88-128-109-080	C-RES, 1-1/8W J	a
3CD C.B	X	R	0311	88-128-109-080	C-RES, 1-1/8W J	a

ELECTRICAL PARTS LIST -5/7 (3CD C.B -5/5)

- ! =  SAFETY PARTS
 C = Components marked

All components used on this model at the production line are shown in this service manual.
 However, please note that not all components will be available as spare parts for after-sales service.
 Components marked S and O are designated as spare parts for service and will be stocked at the spare parts centers.
 Components marked X and R are not designated as spare parts for after sales service, and will not be stocked at the spare parts centers.

UNIT-NAME	!	C	REF-NO	PARTS-NO	PARTS-NAME	SUFFIX&MODEL
						BZA-2
						ZD9NC
3CD C.B	X	R	0312	88-128-109-080	C-RES, 1-1/8W J	a
3CD C.B	X	R	0313	88-128-109-080	C-RES, 1-1/8W J	a
3CD C.B	X	R	0314	88-128-109-080	C-RES, 1-1/8W J	a
3CD C.B	X	R	0401	88-108-101-080	C-RES,U 100-1/16W J	a
3CD C.B	X	R	0402	88-108-101-080	C-RES,U 100-1/16W J	a
3CD C.B	X	R	0403	88-108-101-080	C-RES,U 100-1/16W J	a
3CD C.B	X	R	0404	88-108-101-080	C-RES,U 100-1/16W J	a
3CD C.B	X	R	0405	88-108-101-080	C-RES,U 100-1/16W J	a
3CD C.B	X	R	0406	88-108-101-080	C-RES,U 100-1/16W J	a
3CD C.B	X	R	0407	88-108-101-080	C-RES,U 100-1/16W J	a
3CD C.B	X	R	0408	88-108-101-080	C-RES,U 100-1/16W J	a
3CD C.B	X	R	0415	88-108-182-080	C-RES,U 1.8K-1/16W J	a
3CD C.B	X	R	0416	88-121-122-080	RES,1.2K-1/8W J	a
3CD C.B	X	R	0417	88-108-562-080	C-RES,U 5.6K-1/16W J	a
3CD C.B	O	S	0401	87-036-109-010	SW,MICRO SPPB61	a
3CD C.B	O	S	0402	87-036-109-010	SW,MICRO SPPB61	a
3CD C.B	O	X	0101	87-A70-318-010	VIB,XTAL 33.8688MHZ CSA-309	a

ELECTRICAL PARTS LIST -6/7 (T-T C.B/MOTOR C.B -1/1)

- ! =  SAFETY PARTS
- C = Components marked

All components used on this model at the production line are shown in this service manual.
 However, please note that not all components will be available as spare parts for after-sales service.
 Components marked S and O are designated as spare parts for service and will be stocked at the spare parts centers.
 Components marked X and R are not designated as spare parts for after sales service, and will not be stocked at the spare parts centers.

UNIT-NAME	!	C	REF-NO	PARTS-NO	PARTS-NAME	SUFFIX&MODEL
						BZG-2
						ZD9NC
MOTOR C.B	O	CN	0001	87-A60-086-010	CONN,06P H 6216	a
MOTOR C.B	O	M	0001	87-045-358-010	MOT,RF-310TA 43	a
MOTOR C.B	O	M	0002	87-045-363-010	MOT,MDN4RA3ETA1	a
MOTOR C.B	O	SW	0001	87-A90-042-010	SW,LEAF MSW-17310MVPO	a
T-T C.B	O	C	0401	87-A11-148-080	CAP,TC U 0.1-50 Z F	a
T-T C.B	O	CN	0401	86-NFZ-675-010	CONN,5P H 6216-11H	a
T-T C.B	O	PS	0401	87-A90-156-010	SNSR,SG-240	a
T-T C.B	X	R	0408	88-121-561-080	RES,560-1/8W J	a
T-T C.B	X	R	0409	88-121-273-080	RES,27K-1/8W J	a

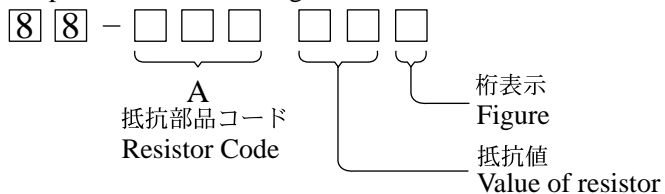
ELECTRICAL PARTS LIST-7/7

- Regarding connectors, they are not stocked as they are not the initial order items.
The connectors are available after they are supplied from connector manufacturers upon the order is received.

○チップ抵抗部品コード/CHIP RESISTOR PART CODE

チップ抵抗部品コードの成り立ち

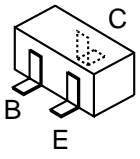
Chip Resistor Part Coding



チップ抵抗 Chip resistor

容量 Wattage	種類 Type	許容誤差 Tolerance	記号 Symbol	寸法/Dimensions (mm)			抵抗コード : A Resistor Code : A	
				外形/Form	L	W		t
1/16W	1005	± 5%	CJ		1.0	0.5	0.35	104
1/16W	1608	± 5%	CJ		1.6	0.8	0.45	108
1/10W	2125	± 5%	CJ		2	1.25	0.45	118
1/8W	3216	± 5%	CJ		3.2	1.6	0.55	128

TRANSISTOR ILLUSTRATION-1/1



2SC3052F



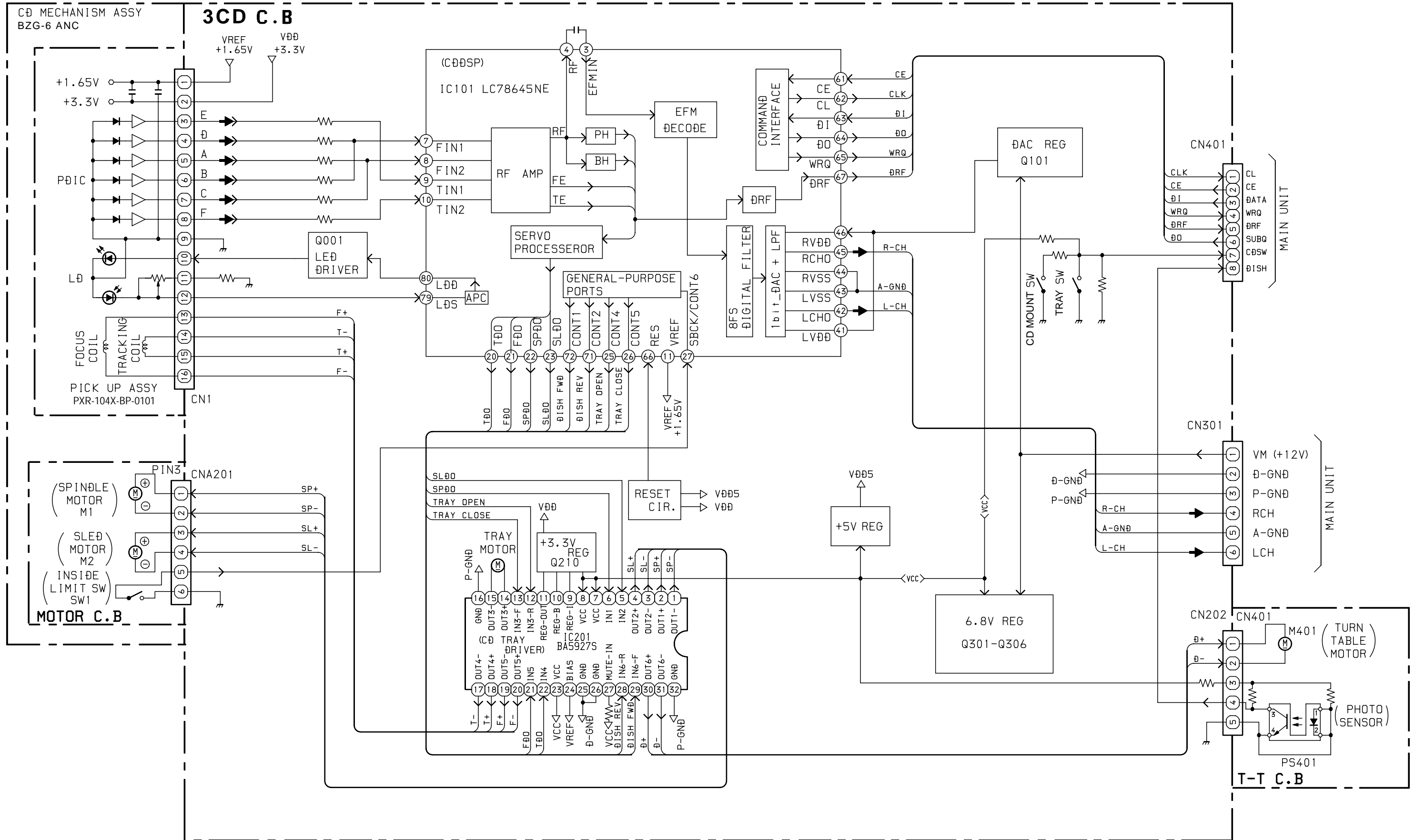
E C B

RT1N 141C



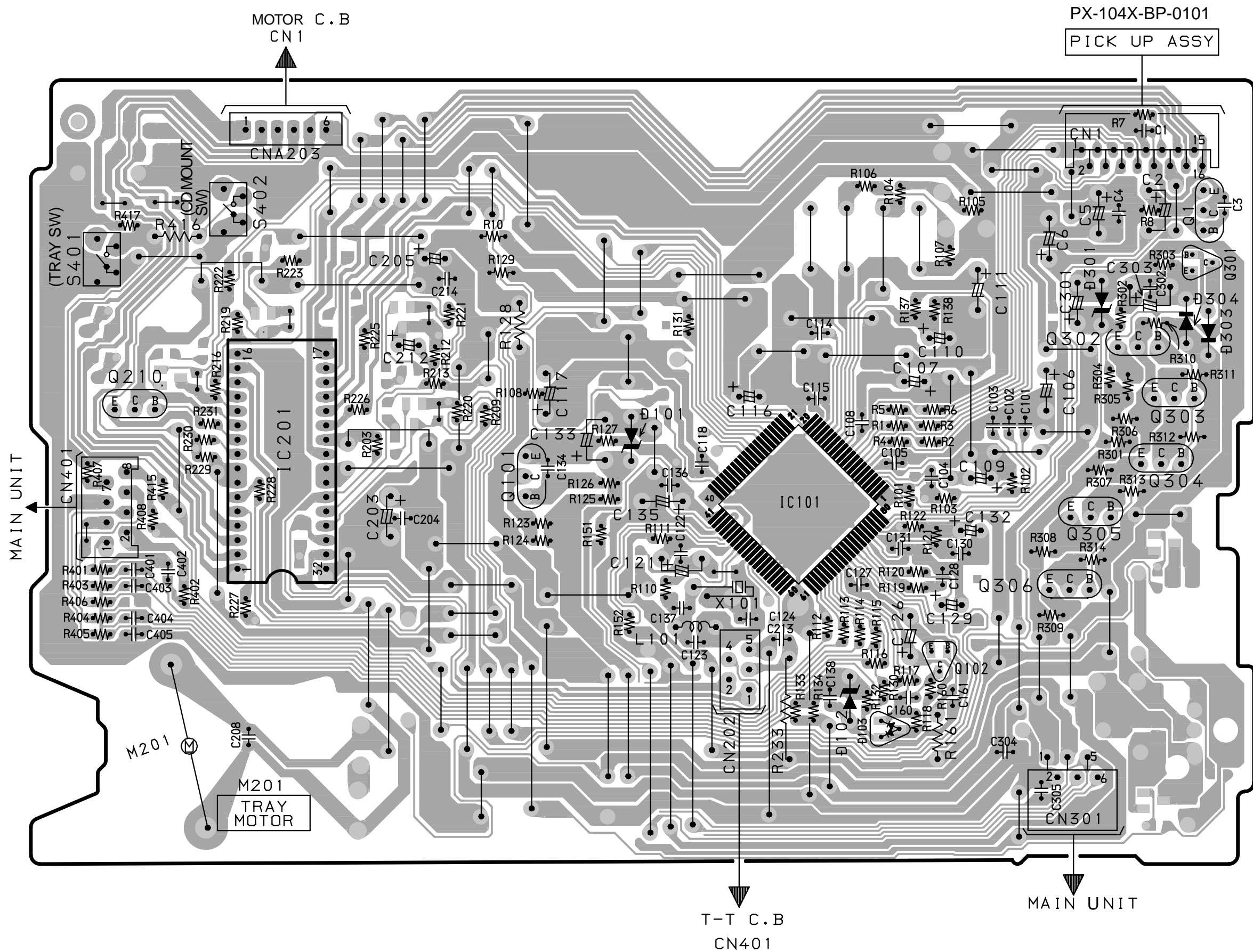
E C B

2SA19790/Y
KTA1266GR
KTC3198GR

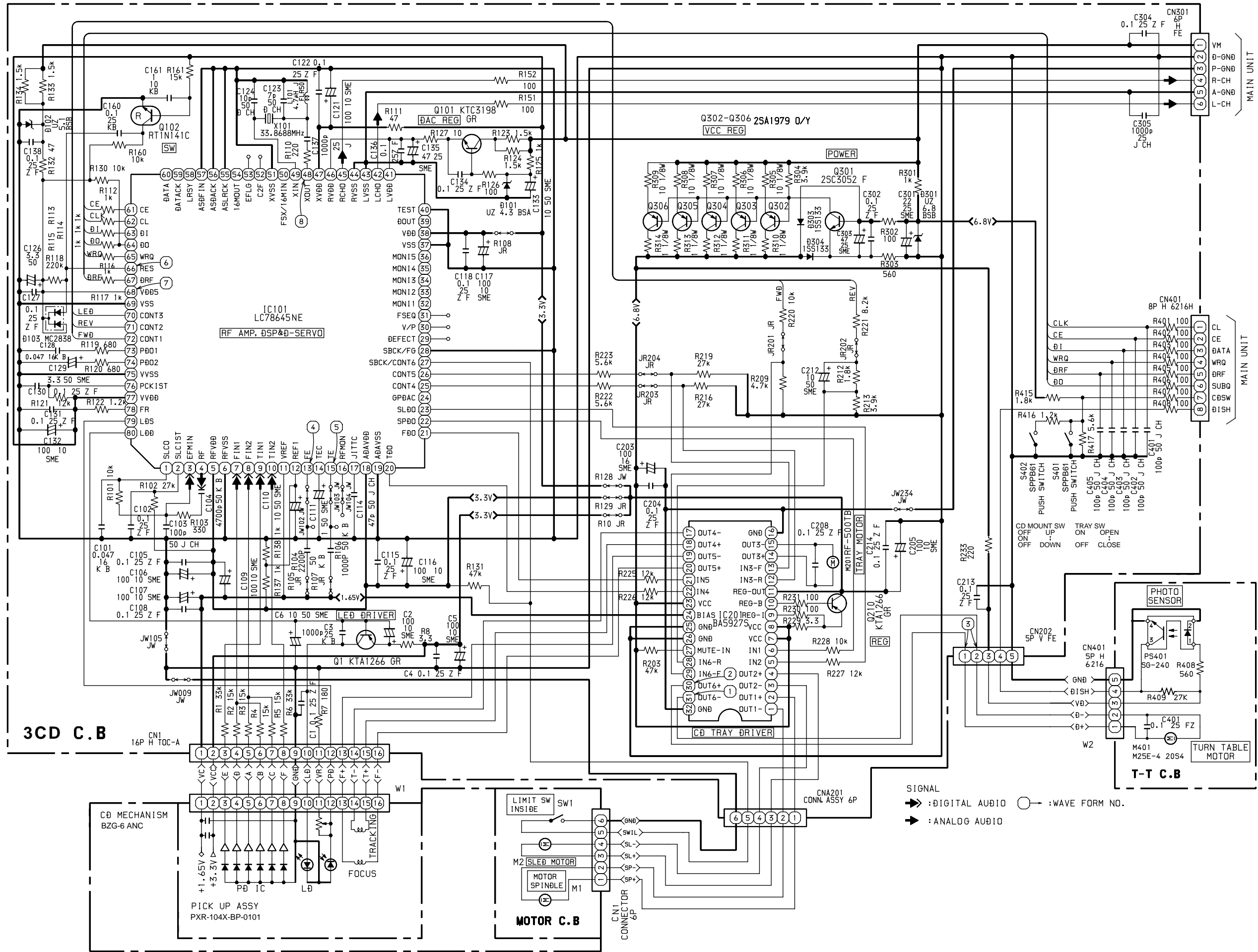


SIGNAL → DIGITAL AUDIO
 → ANALOG AUDIO

3CD C.B



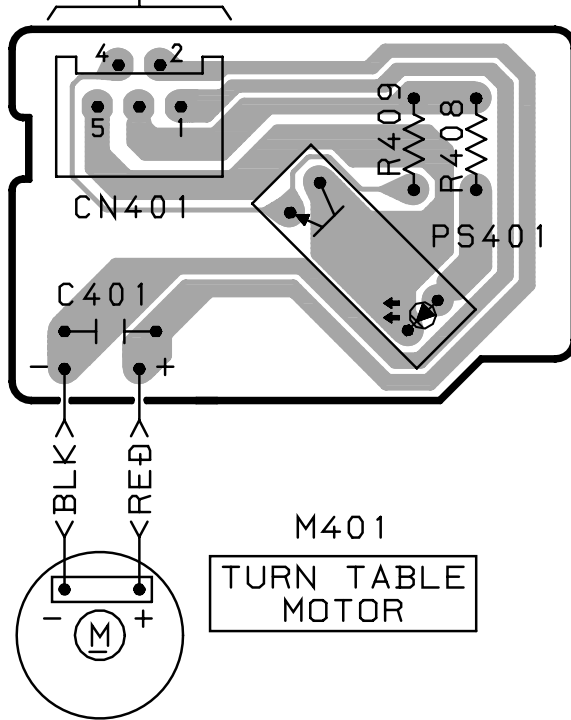
A
B
C
D
E
F
G
H
I
J
K
L
M
N
O
P
Q
R
S
T
U



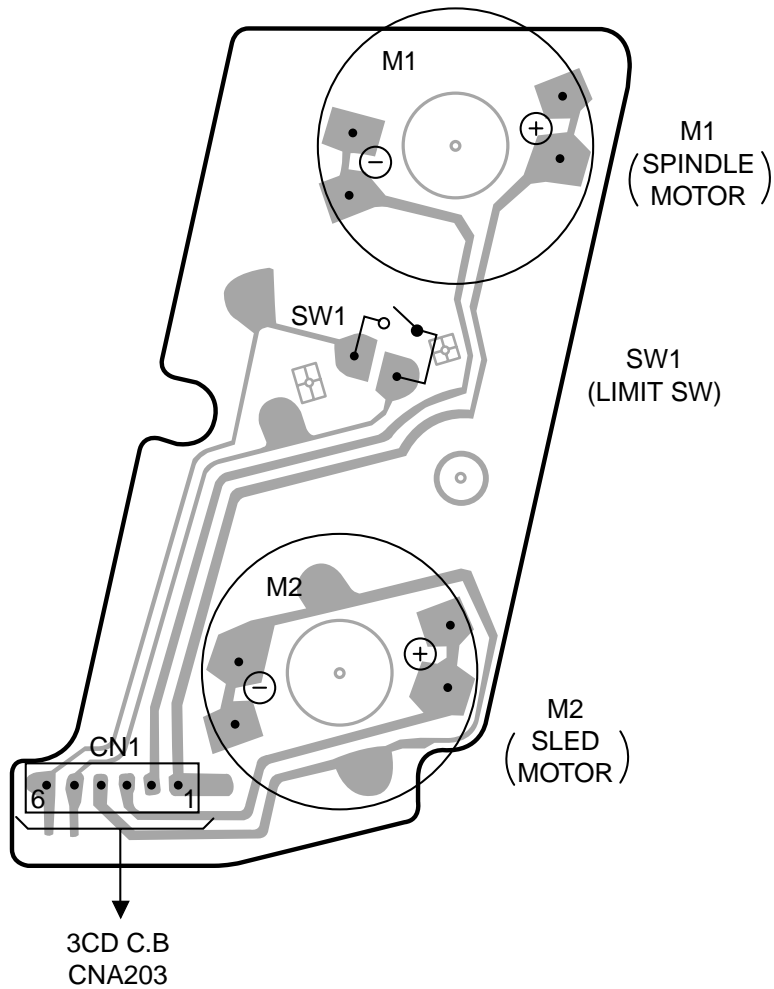
15	14	13	12	11	10	9	8	7	6	5	4	3	2	1
----	----	----	----	----	----	---	---	---	---	---	---	---	---	---

MAIN C.B
CN202

T-T C.B



MOTOR C.B (BZG6 ANC)

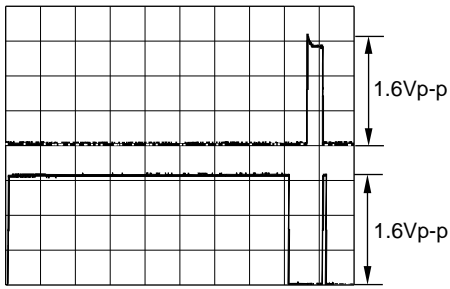


A
B
C
D
E
F
G
H
I
J
K
L
M
N
O
P
Q
R
S
T
U

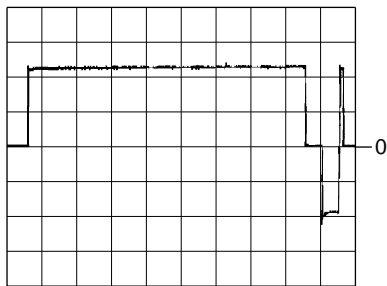
WAVE FORM-1/1

① IC201 ③① (OUT6-) VOLT/DIV: 500mV
TIME/DIV: 200mS

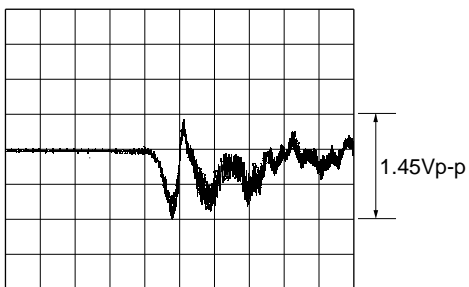
② IC201 ③② (OUT6+)



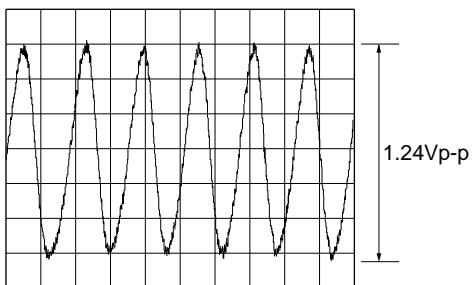
③ Between CN202 ① and ② (② Pin: 0 Level) VOLT/DIV: 1V
TIME/DIV: 200mS



④ IC101 ⑬ (FE) VOLT/DIV: 500mV
TIME/DIV: 5mS



⑤ IC101 ⑮ (TE) VOLT/DIV: 200mV
TIME/DIV: 200μS

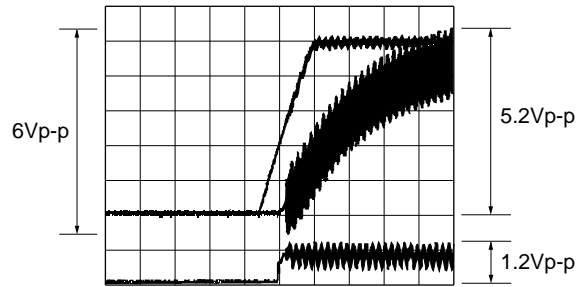


⑥ IC101 ⑥⑥ (RES) VOLT/DIV: 1V
TIME/DIV: 10mS

⑦ IC101 ⑥⑧ (VDD5)

⑧ IC101 ④⑧ (XOUT)

(POWER ON)

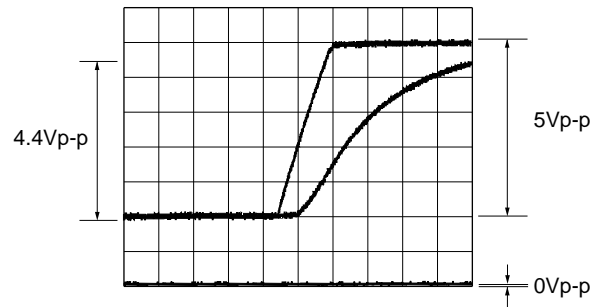


⑥ IC101 ⑥⑥ (RES) VOLT/DIV: 1V
TIME/DIV: 10mS

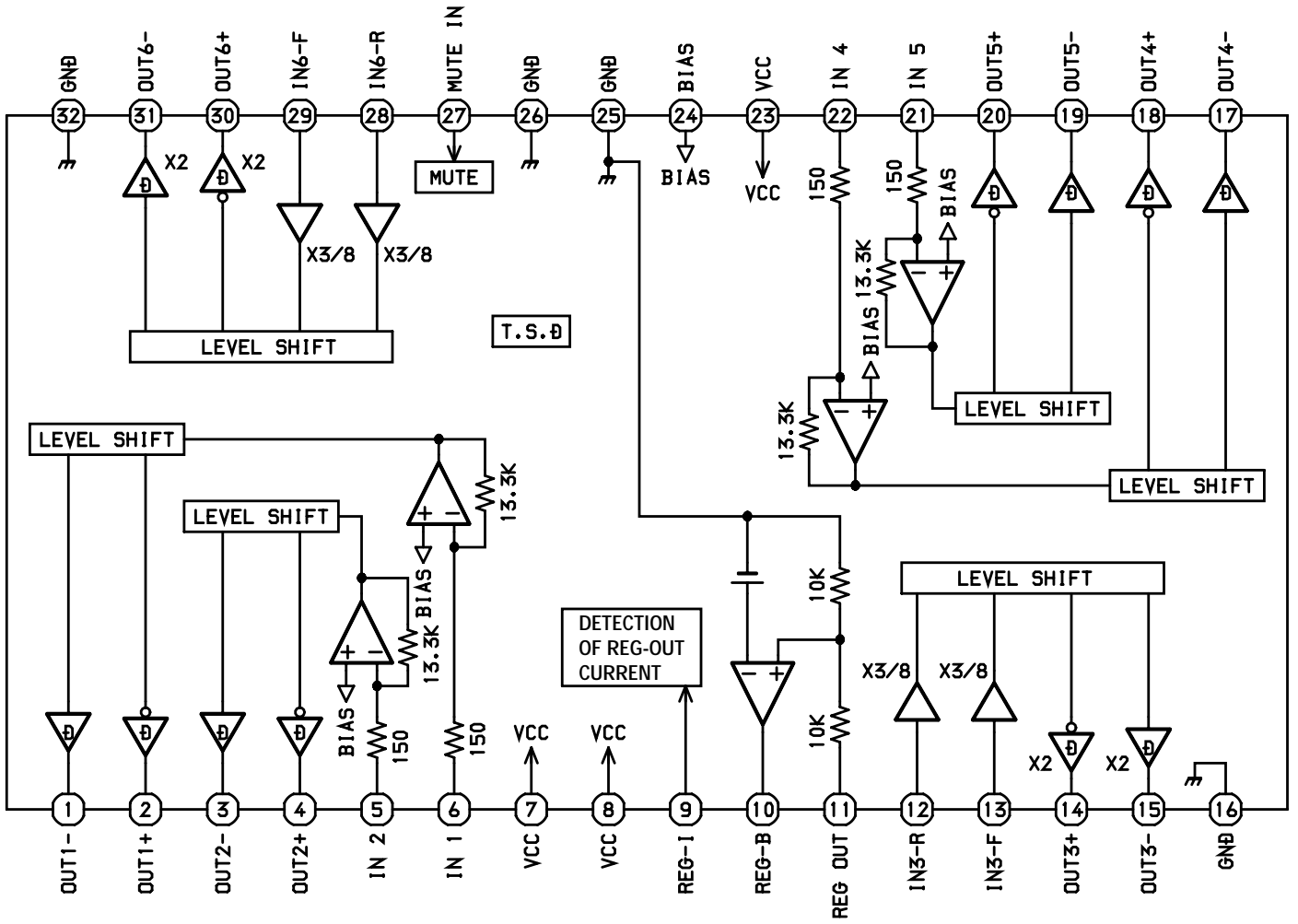
⑦ IC101 ⑥⑧ (VDD5)

⑧ IC101 ④⑧ (XOUT)

(POWER OFF)



IC BLOCK DIAGRAM-1/1
IC, BA5927S



IC DESCRIPTION-1/1 (LC78645)-1/3

Pin No.	Pin Name	I/O	Description	
1	SLCO	O	Slice level control	Control output.
2	SLCIST	I		SLCO output current adjustment resistor connection pin.
3	EFMIN	I		RF signal input pin.
4	RF	O	RF monitor pin.	
5	RFVDD	—	RF power supply pin.	
6	RFVSS	—	RF ground pin. Must be connected to 0V.	
7	FIN1	I	A+C signal input pin.	
8	FIN2	I	B+D signal input pin.	
9	TIN1	I	E signal input pin.	
10	TIN2	I	F signal input pin.	
11	VREF	O	VREF voltage output pin.	
12	REFI	I	Reference voltage output setting pin.	
13	EF	O	FE signal monitor pin.	
14	TEC	O	TE signal LPF capacitor connection pin.	
15	TE	O	TE signal monitor pin.	
16	RFMON	O	RF internal signal monitor pin.	
17	JITTC	O	Jitter detection capacitor connection pin.	
18	ADAVDD	—	Servo A/D, D/A supply pin.	
19	ADAVSS	—	Servo A/D, D/A ground pin. Must be connected to 0V.	
20	TDO	O	Tracking control output pin. D/A output.	
21	FDO	O	Focus control output pin. D/A output.	
22	SPDO	O	Spindle control output pin. D/A output.	
23	SLDO	O	Thread control output pin. D/A output.	
24	GPDAC	O	Servo D/A general-purpose output pin. (Not connected)	
25, 26	CONT4, 5	I/O	General-purpose input/output pin 4, 5.	Controlled by commands from the microprocessor. Any of these that are unused must be either set up as input pin ports and connected to 0V, or set up as output pin ports and left open.
27	SBCK/CONT6	I/O	General-purpose input/output pin 6, or subcode read clock input pin.	
28	SBCK/FG	I	Subcode read clock input pin/FG signal input pin/external emphasis setting pin. Set to command -pin function. Must be connected to 0V.	
29	DEFECT	O	Defect pin. (Not connected)	
30	V/P	O	Rouge servo/phase control automatic switching monitor output pin. “H” for rough servo and “L” for phase servo. (Not connected)	
31	FSEQ	O	Synchronization signal detection output pin. Outputs a high level when the synchronization signal detected from the EFM signal and the internally generated synchronization signal agree. (Not connected)	
32-36	MONI1, 5	O	Internal signal monitor pin 1, 5. (Not connected)	
37	VSS	—	Digital ground pin. Must be connected to 0V.	
38	VDD	—	Digital power supply pin.	
39	DOUT	O	Digital OUT output pin. (Not connected)	
40	TEST	I	Test input pin. Must be connected to 0V.	

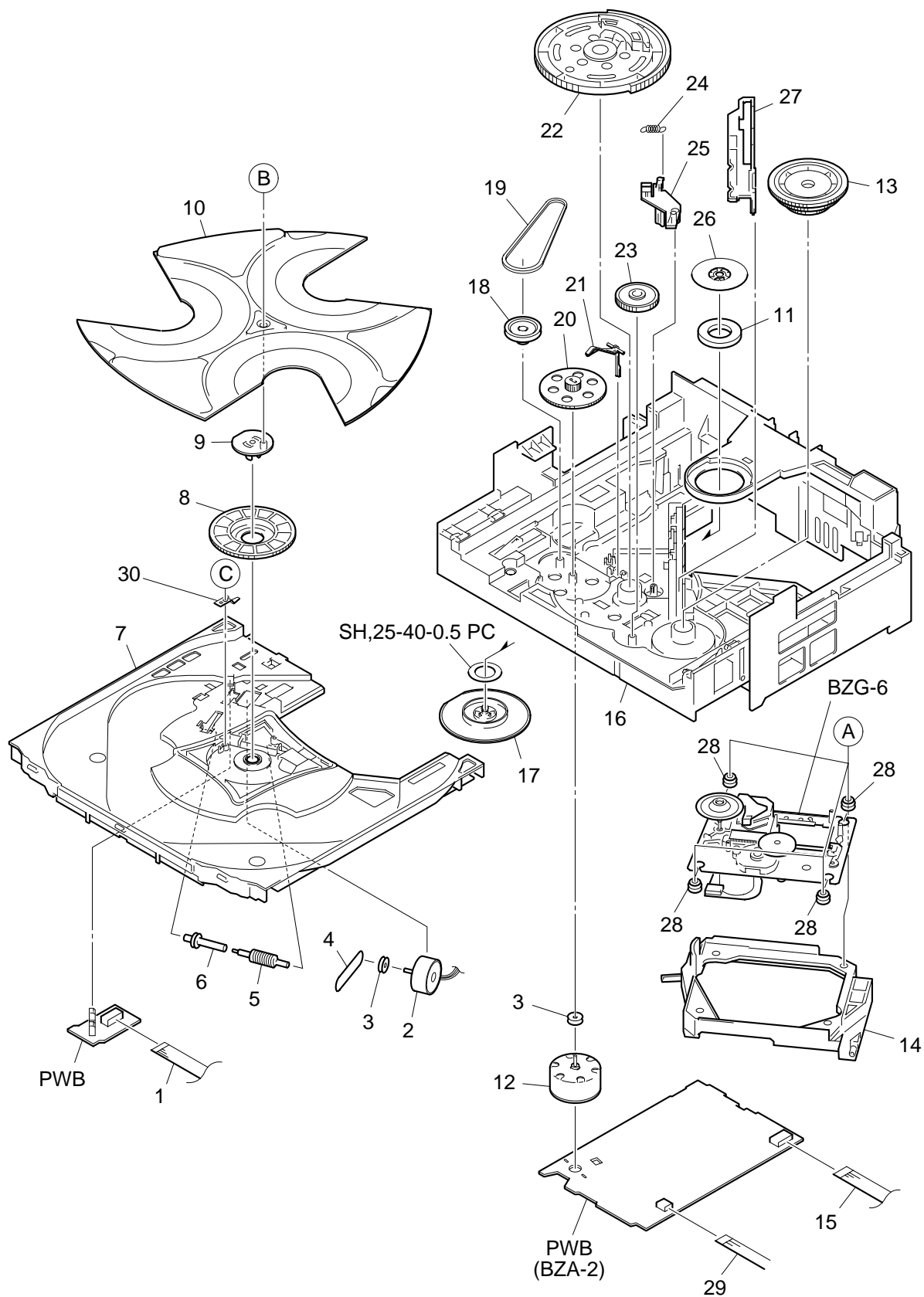
IC DESCRIPTION-1/1 (LC78645)-2/3

Pin No.	Pin Name	I/O	Description	
41	LVDD	—	L channel D/A converter	L channel power supply pin.
42	LCHO	O		L channel output pin.
43	LVSS	—		L channel ground pin. Must be connected to 0V.
44	RVSS	—	R channel D/A converter	R channel ground pin. Must be connected to 0V.
45	RCHO	O		R channel output pin.
46	RVDD	—		R channel power supply pin.
47	XVDD	—	Crystal oscillator	Crystal oscillator power supply pin.
48	XOUT	O		Connection for a 33.8688MHz crystal oscillator pin.
49	XIN	I		
50	FSX/16MIN	I/O	7.35kHz synchronization signal output pin. DF, DAC external clock input pin. (Not connected)	
51	XVSS	—	Crystal oscillator	Crystal oscillator ground pin. Must be connected to 0V.
52	C2F	O	C2 flag output pin. (Not connected)	
53	EFLG	O	C1, C2 error correction monitor pin. (Not connected)	
54	16MOUT	O	16.9344MHz output pin. (Not connected)	
55	ASLRCK	I	Antishock mode	L/R clock input pin. Must be connected to 0V when unused.
56	ASDACK	I		Bit clock input pin. Must be connected to 0V when unused.
57	ASDFIN	I		L/R channel data input pin. Must be connected to 0V when unused.
58	LRSY	O	Digital data output	L/R clock output pin. (Not connected)
59	DATAACK	O		Bit clock output pin. (Not connected)
60	DATA	O		L/R channel data output pin. (Not connected)
61	CE	I	Microprocessor interface	Chip enable signal input pin.
62	CL	I		Data transfer clock input pin.
63	DI	I		Data input pin.
64	DO	O		Data output pin. (Nch open drain output)
65	WRQ	O		Interruption signal output pin.
66	RES	I	Reset input pin. This pin must be set low briefly after power is first applied.	
67	DRF	O	Focus ON detect pin.	
68	VDD5	—	Microprocessor interface power supply pin.	
69	VSS	—	Digital ground pin. Must be connected to 0V.	
70	CONT3	I/O	General-purpose output pin 3. (Not connected)	Controlled by commands from the microprocessor . Must be set as an input pin and connected to 0V or set as an output pin and left open when unused.
71, 72	CONT2, 1	I/O	General-purpose output pin 2, 1.	

IC DESCRIPTION-1/1 (LC78645)-3/3

Pin No.	Pin Name	I/O	Description	
73, 74	PD01, 2	O	PLL	Phase comparison output pin 1, 2 to control built-in VCO.
75	VVSS	—		Built -in VCO GND pin. Must always be connected to 0V.
76	PCKIST	I		Resistor connection pin to set current for PD01 and 02 outputs.
77	VVDD	—		Built-in VCO power supply pin.
78	FR	I		Resistor connection pin to set the frequency range of built-in VCO.
79	LDS	I	Laser power detection signal input pin.	
80	LDD	O	Laser power control signal output pin.	

MECHANICAL EXPLODED VIEW-1/1



MECHANICAL PARTS LIST -1/1

! =  SAFETY PARTS
 C = Components marked

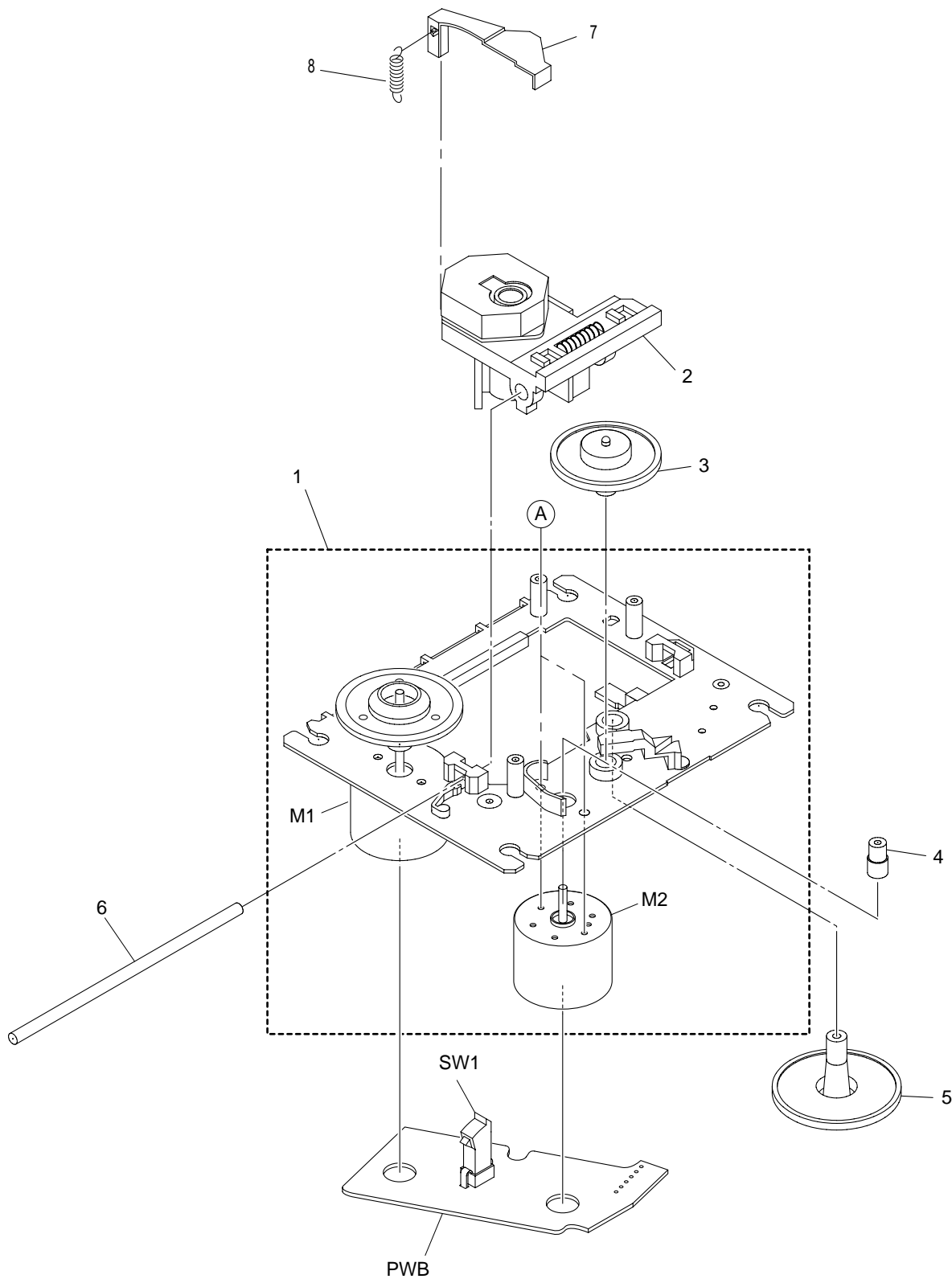
All components used on this model at the production line are shown in this service manual.
 However, please note that not all components will be available as spare parts for after-sales service.
 Components marked S and O are designated as spare parts for service and will be stocked at the spare parts centers.
 Components marked X and R are not designated as spare parts for after sales service, and will not be stocked at the spare parts centers.

UNIT-NAME	!	C	REF-NO	PARTS-NO	PARTS-NAME	SUFFIX&MODEL
						BZG-2 ZD9NC
CD TRANSPORT	O		1	8B-ZG2-602-010	FF-CABLE, 5P 1.25 185MM	a
CD TRANSPORT	O		2	87-A91-982-010	MOT, M25E-4 2054	a
CD TRANSPORT	O		3	84-ZG1-267-010	PULLEY, LOAD MO 8	a
CD TRANSPORT	O		4	8B-ZG2-246-010	BELT, SQ 1-99.5	a
CD TRANSPORT	O		5	8B-ZG2-241-110	GEAR, WORM	a
CD TRANSPORT	O		6	8B-ZG2-236-010	PULLEY, WORM	a
CD TRANSPORT	O		7	8B-ZG2-001-010	TRAY, 2K	a
CD TRANSPORT	O		8	84-ZG1-269-010	GEAR, MAIN TT 4	a
CD TRANSPORT	O		9	84-ZG1-288-010	LEVER, TT NAT	a
CD TRANSPORT	O		10	8B-ZG2-002-110	TURN TABLE, 2K	a
CD TRANSPORT	O		11	83-ZG3-604-010	RING, MAG 2	a
CD TRANSPORT	O		12	87-045-305-010	MOT, RF-500TB	a
CD TRANSPORT	O		13	8B-ZG2-226-010	GEAR, TRAY	a
CD TRANSPORT	O		14	8B-ZG2-206-210	HLDR, MECHA	a
CD TRANSPORT	O		15	8B-ZG2-601-010	FF-CABLE, 16P 1.0 115MM	a
CD TRANSPORT	O		16	8B-ZG2-201-210	CHAS, MECHA	a
CD TRANSPORT	O		17	84-ZG1-291-110	HLDR, MAGNET 4 NAT	a
CD TRANSPORT	O		18	84-ZG1-271-010	PULLEY, RELAY 8	a
CD TRANSPORT	O		19	84-ZG1-209-010	BELT, SQ1.8-117.7	a
CD TRANSPORT	O		20	84-ZG1-206-110	GEAR RELAY	a
						BZG-2 ZD9NC
CD TRANSPORT	O		21	83-ZG3-213-010	LVR, SW	a
CD TRANSPORT	O		22	8B-ZG2-221-010	GEAR, MAIN CAM	a
CD TRANSPORT	O		23	8B-ZG2-231-010	GEAR, TRAY RELAY	a
CD TRANSPORT	O		24	84-ZG1-211-010	SPR-E, CAM S	a
CD TRANSPORT	O		25	8B-ZG2-216-010	LEVER, CAM	a
CD TRANSPORT	O		26	81-ZG1-255-110	PLATE, MAGNET MK2	a
CD TRANSPORT	O		27	8B-ZG2-211-010	PLATE, MECHA CAM	a
CD TRANSPORT	O		28	80-CD3-214-010	CUSH CD A	a
CD TRANSPORT	O		29	8B-ZG2-603-010	FF-CABLE, 6P 1.25 130MM	a
CD TRANSPORT	O		30	8B-ZG2-251-010	SPR-P, PULLEY 2K	a
CD TRANSPORT	O	A		81-ZG1-271-010	S-SCREW, MECH REAR	a
CD TRANSPORT	O	B		87-B10-331-010	VF+3-6 BLK	a
CD TRANSPORT	O	C		87-067-584-010	BVT2+3-6 W/O SLOT	a

COLOR NAME TABLE

Basic color symbol	Color	Basic color symbol	Color	Basic color symbol	Color
B	Black	C	Cream	D	Orange
G	Green	H	Gray	L	Blue
LT	Transparent Blue	N	Gold	P	Pink
R	Red	S	Silver	ST	Titan Silver
T	Brown	V	Violet	W	White
WT	Transparent White	Y	Yellow	YT	Transparent Yellow
LM	Metallic Blue	LL	Light Blue	GT	Transparent Green
LD	Dark Blue	DT	Transparent Orange	GM	Metallic Green
YM	Metallic Yellow	DM	Metallic Orange	PT	Transparent Pink
LA	Aqua Blue	GL	Light Green	HT	Transparent Gray
HM	Metallic Gray	NH	Champagne Gold	M	Wood Pattern

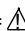
CD MECHANISM EXPLODED VIEW-1/1 (BZG-6 ANC)



CD MECHANISM PARTS LIST-1/1 (BZG-6 ANC)

REF. NO	PART NO.	KANRI NO.	DESCRIPTION
1	83-ZG2-243-310		CHAS ASSY, SHT
2	87-A92-037-010		PICKUP, PXR-104X-BP-0101
3	83-ZG2-235-010		GEAR, A3
4	83-ZG2-236-010		GEAR, MOTOR 3
5	83-ZG2-205-210		GEAR, B
6	83-ZG2-253-110		SHAFT, SLIDE 5
7	83-ZG2-245-510		LEVER, SHUTTER (*)
8	83-ZG2-250-210		SPR-E, SHT 2
A	87-261-032-210		V+2-3

OTHER PARTS LIST -1/2 (BZG-2)-1/1

- ! =  SAFETY PARTS
- C = Components marked

All components used on this model at the production line are shown in this service manual.
 However, please note that not all components will be available as spare parts for after-sales service.
 Components marked S and O are designated as spare parts for service and will be stocked at the spare parts centers.
 Components marked X and R are not designated as spare parts for after sales service, and will not be stocked at the spare parts centers.

UNIT-NAME	! C	REF-NO	PARTS-NO	PARTS-NAME	SUFFIX&MODEL
					BZG-2
					ZD9NC
ASSY CODE	X		M8-BZG-296-170	BZG-2 ZD9NC	a
CD MECHANISM	X		M8-BZG-691-070	BZG-6 ANC	a
CD TRANSPORT	X		8A-ZG1-214-010	SH, 25-40-0.5 PC	a
CD TRANSPORT	X		8B-ZG2-255-010	SH, 7-5.5-0.5 W/ADH	a
ELECTRICAL	X		A8-BZA-293-070	BZA-2 ZD9NC	a
PWB	X		8B-ZG2-605-010	PWB, COMB T-T 28M	a
PWB	X		8B-ZG2-606-010	PWB, T-T	a

OTHER PARTS LIST -2/2 (BZA-2)-1/1

- ! = ⚠ SAFETY PARTS
- C = Components marked

All components used on this model at the production line are shown in this service manual.
 However, please note that not all components will be available as spare parts for after-sales service.
 Components marked S and O are designated as spare parts for service and will be stocked at the spare parts centers.
 Components marked X and R are not designated as spare parts for after sales service, and will not be stocked at the spare parts centers.

UNIT-NAME	! C	REF-NO	PARTS-NO	PARTS-NAME	SUFFIX&MODEL
					BZA-2
					ZD9NC
ASSY CODE	X		A8-BZA-293-070	BZA-2 ZD9NC	a
PWB	X		8B-ZA2-605-210	PWB, COMB BZA2C 2M	a
PWB	X		8B-ZA2-606-210	PWB, MAIN BZA2C	a

アイワ株式会社 〒110-8710 東京都台東区池之端1-2-11 ☎03(3827)3111 (代表)
AIWA CO.,LTD. 2-11, IKENOHATA 1-CHOME, TAITO-KU, TOKYO 110-8710, JAPAN TEL:03 (3827) 3111