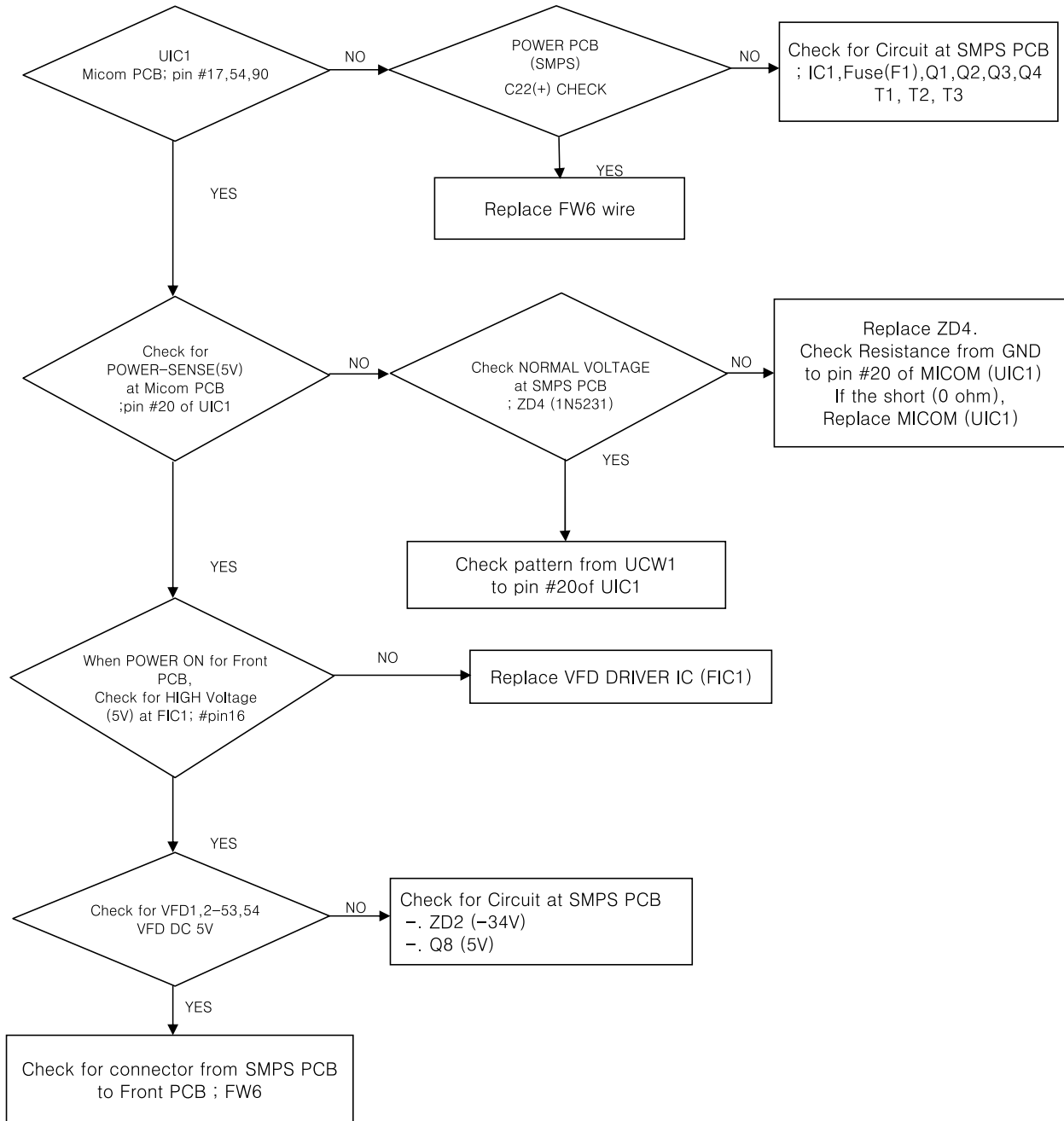


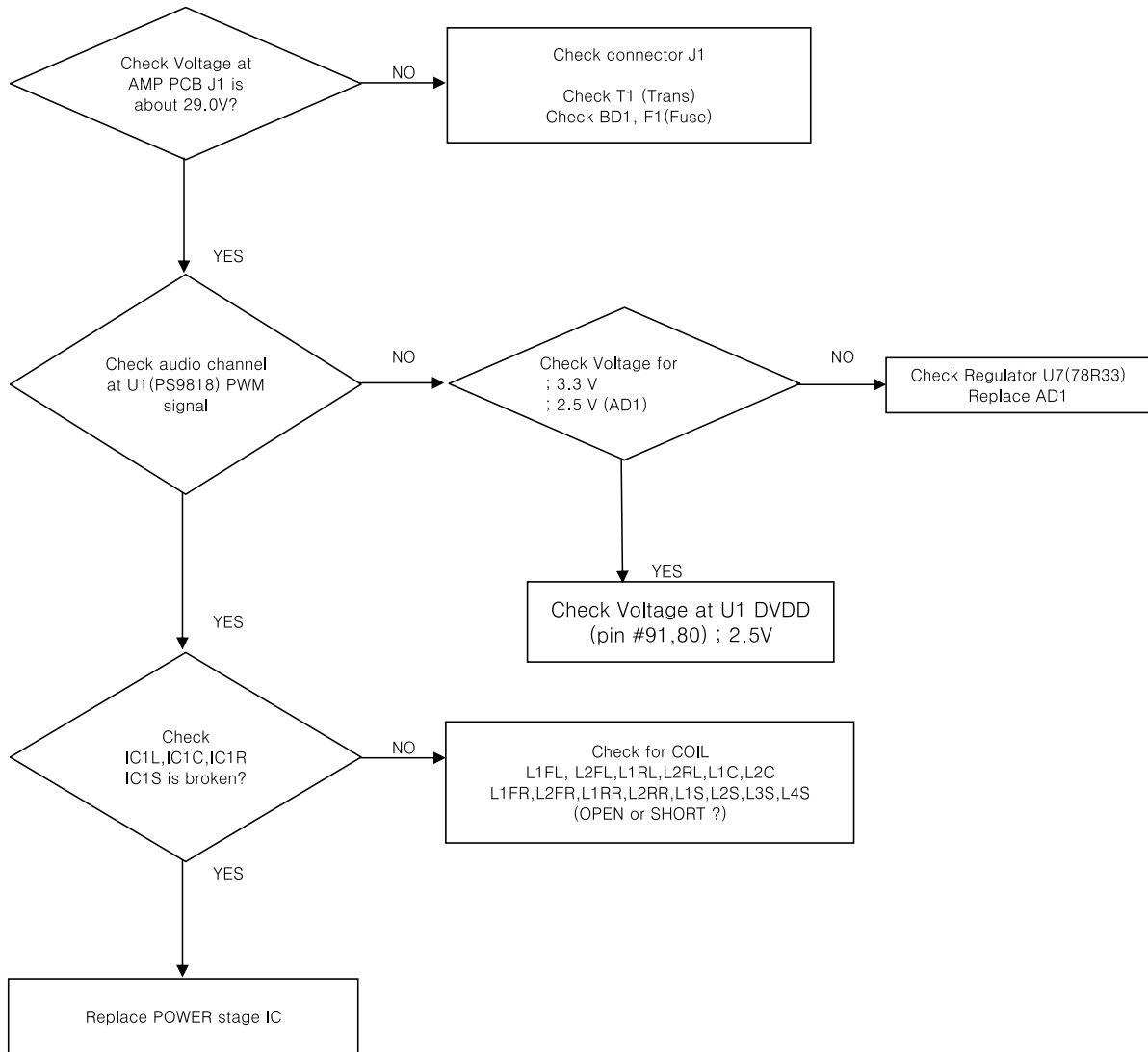
8. Troubleshooting

8-1 Main

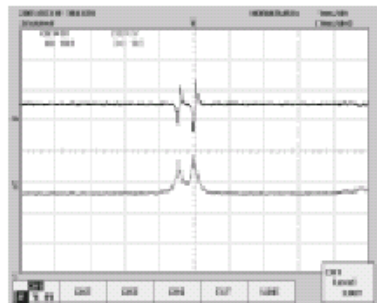
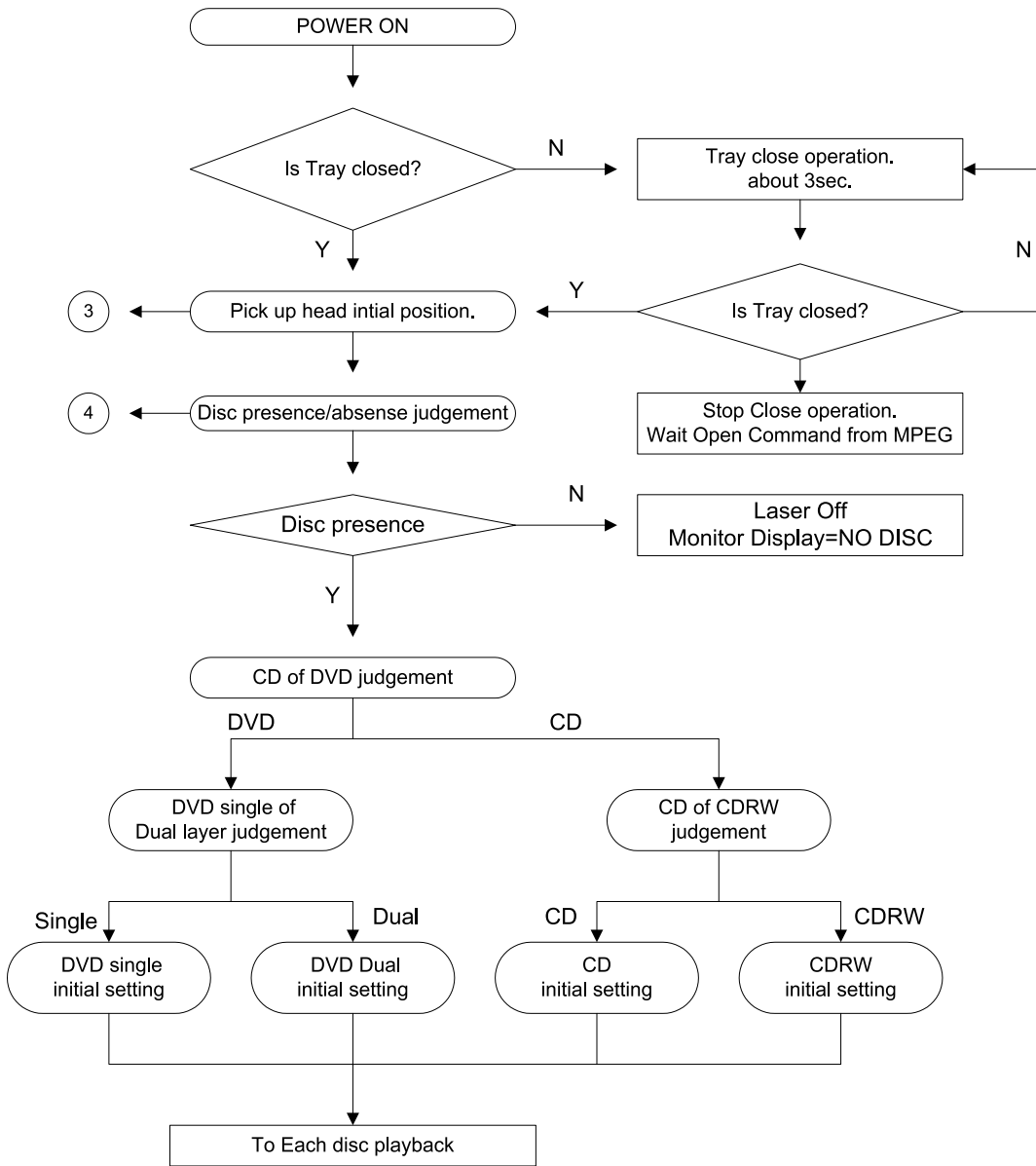
1. Main(Power)



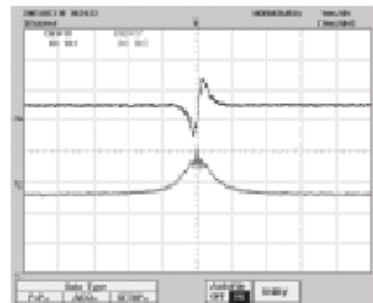
2.Output



1. Initial operation after power ON

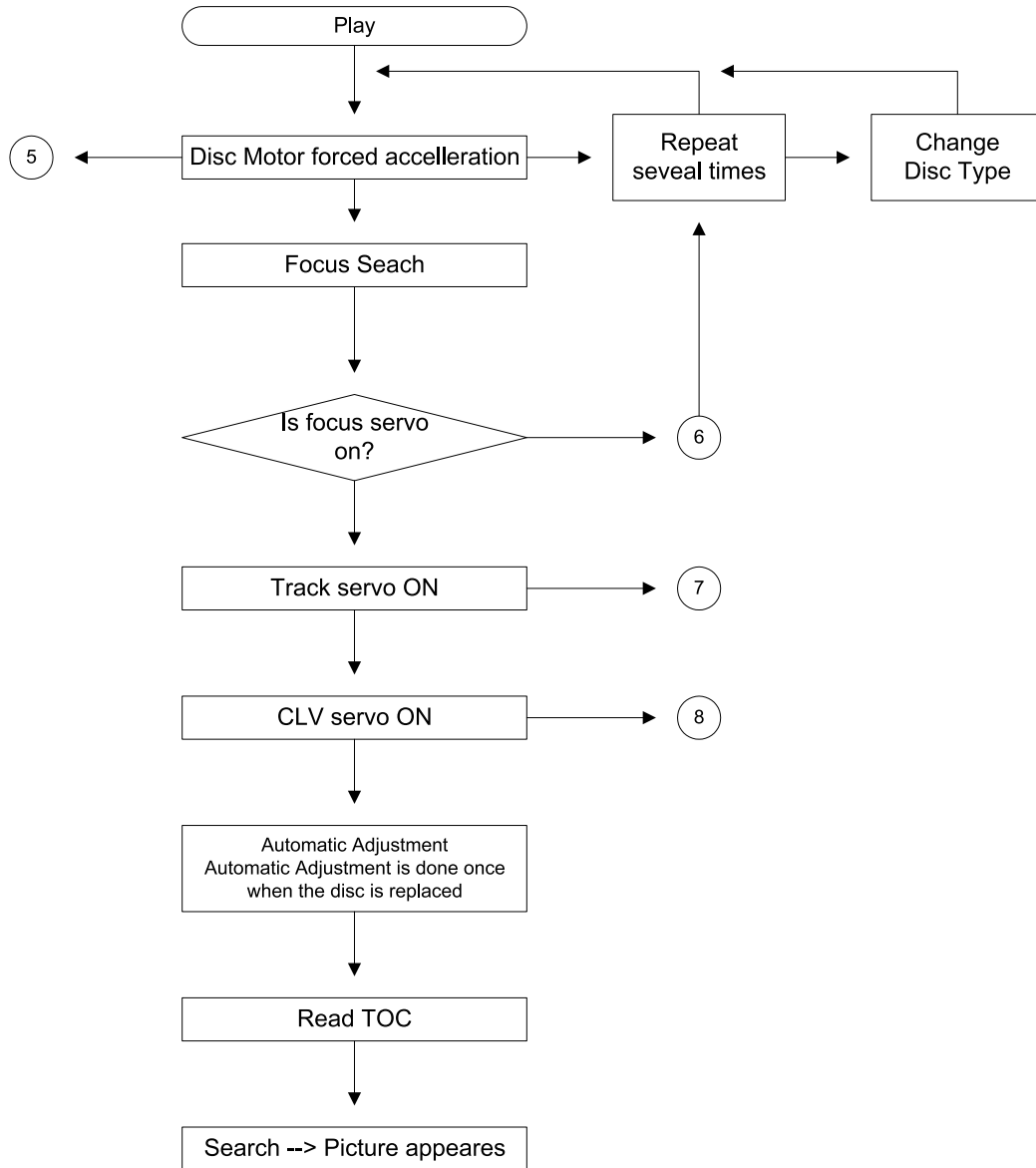


(DVD Dual)



(DVD Single)

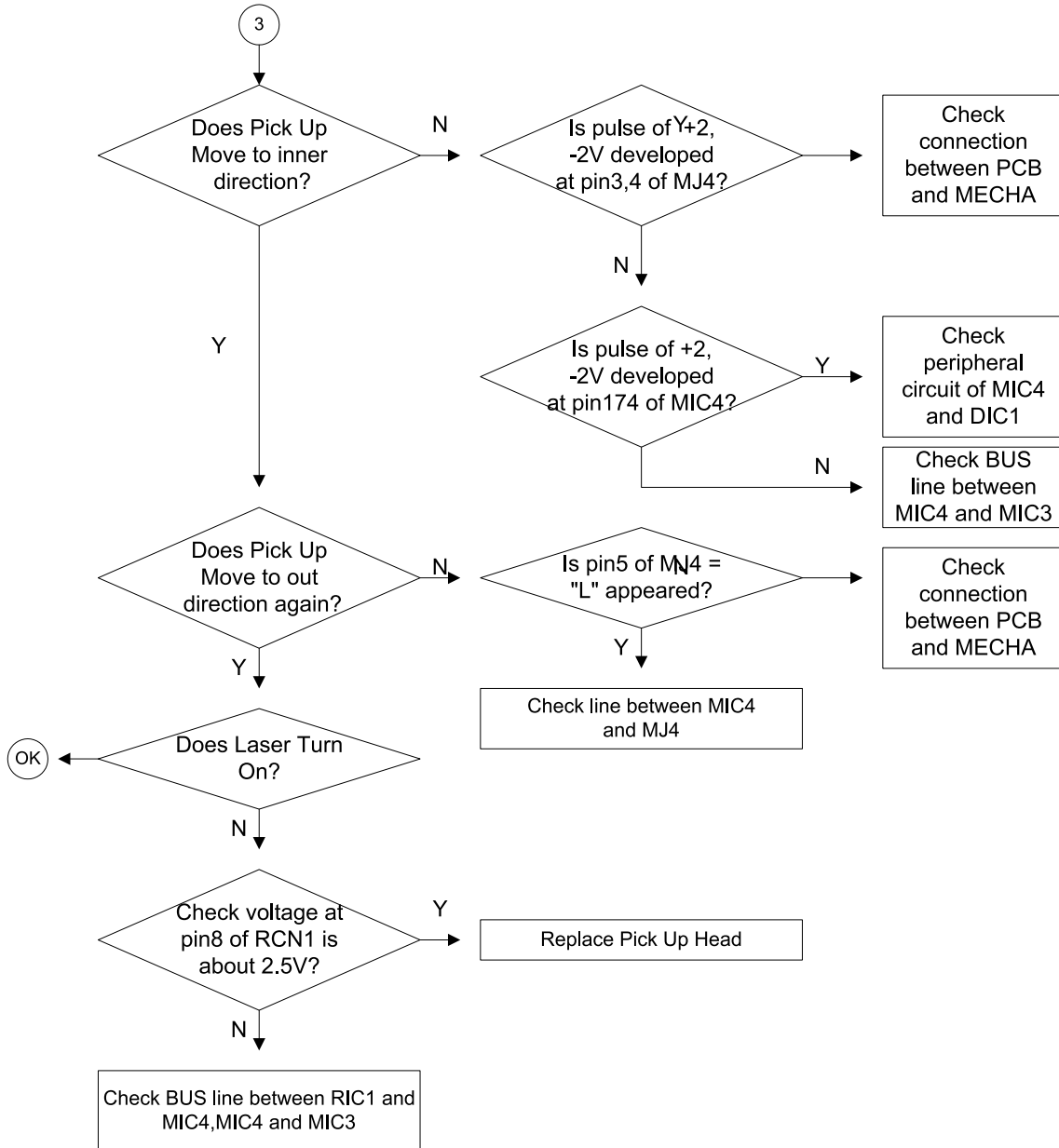
2. Play operation



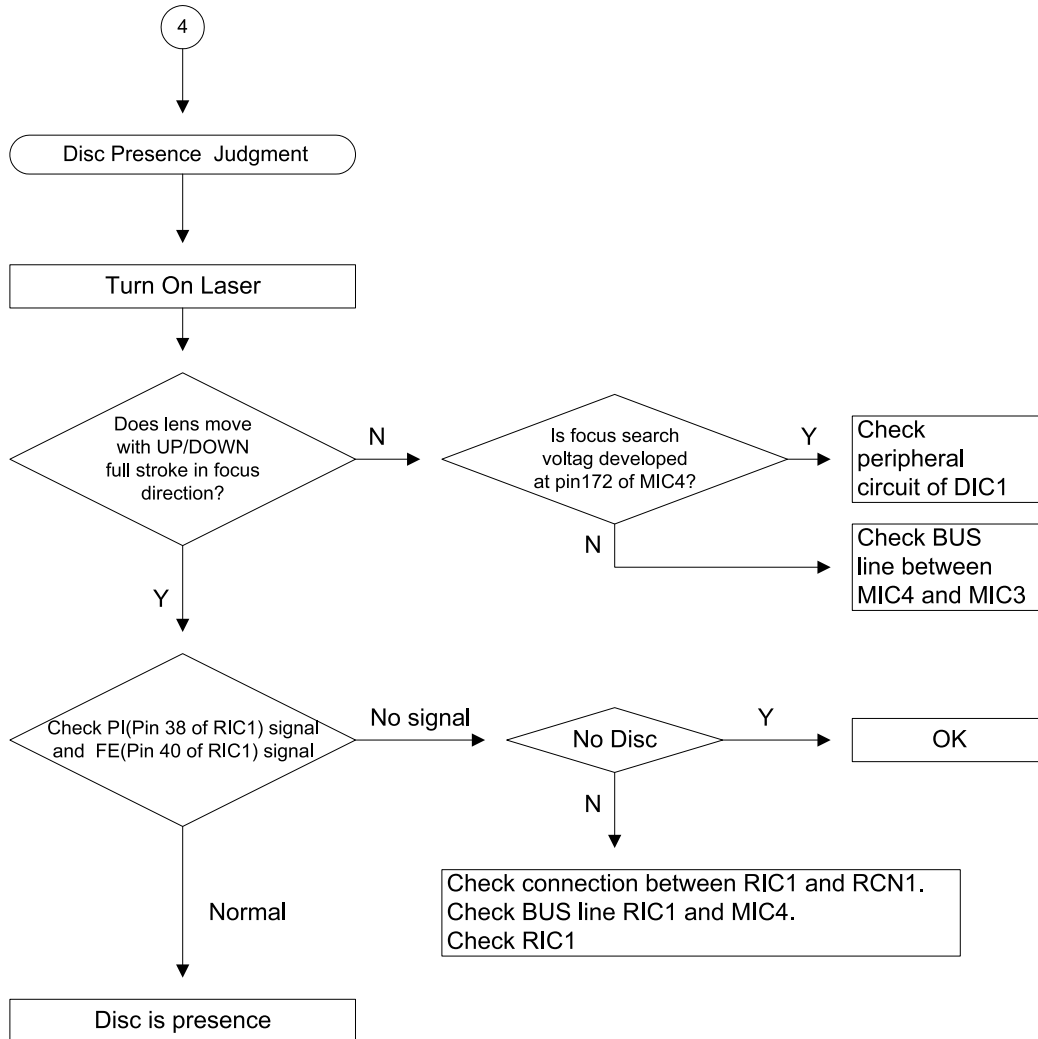
3. PickUp Head Initial Postion

PickUp Head Initial Postion

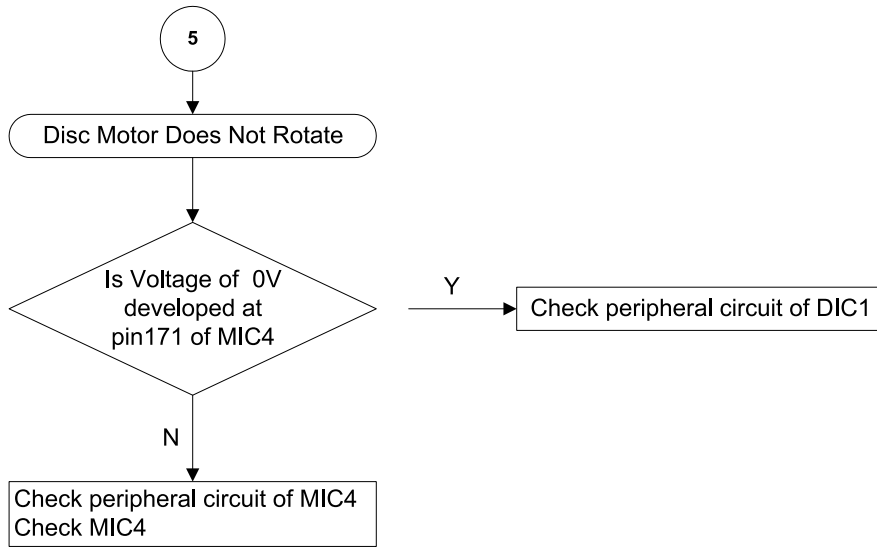
1. Move Pick Up Head to inner diretion until pin5 of MJ4="L"
2. If pin5 of MJ4="L", then move Pick Up Head to outer diretion for a short time.
3. Ture On the Laser of Pick Up Head to judge that disc is presence or not.



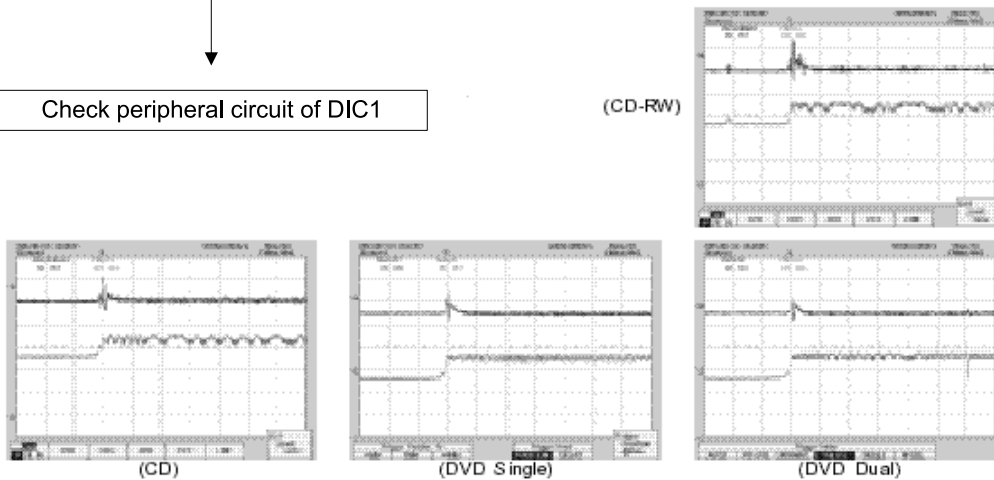
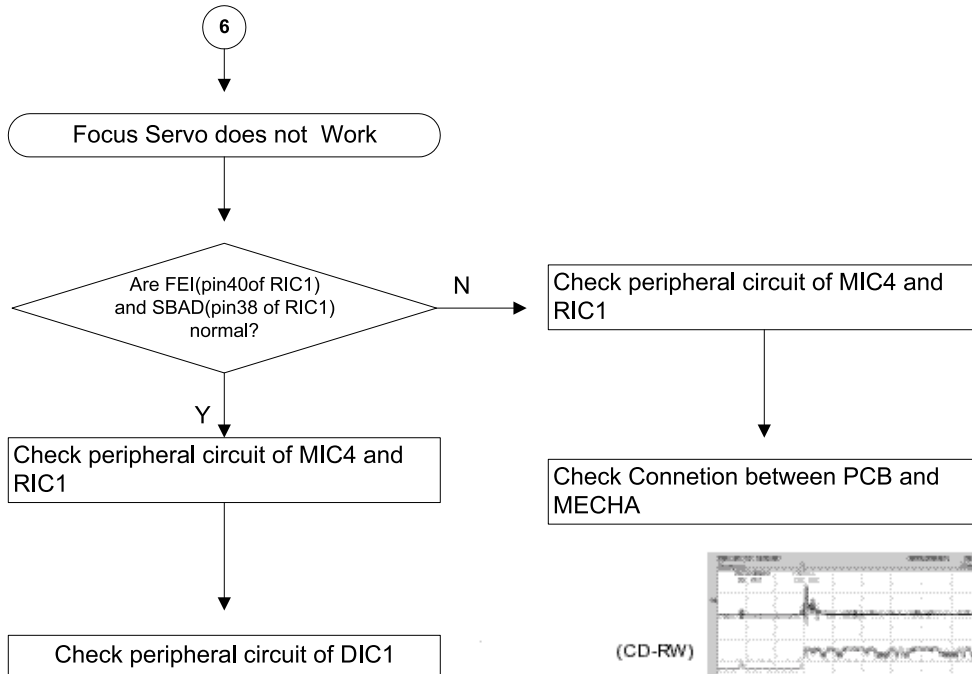
4. Disc Presence/Absence Judgment



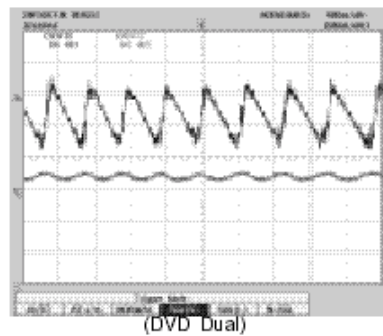
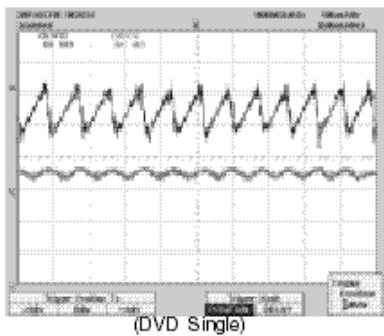
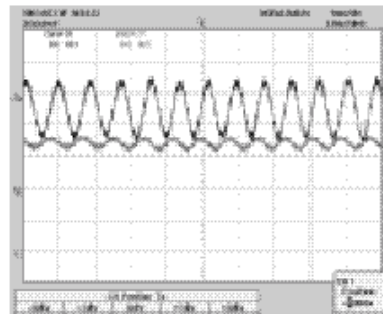
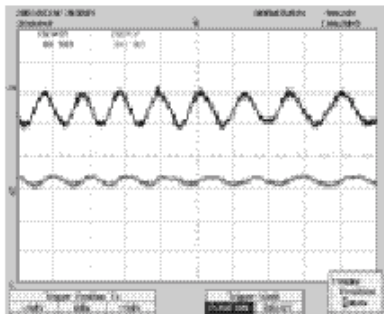
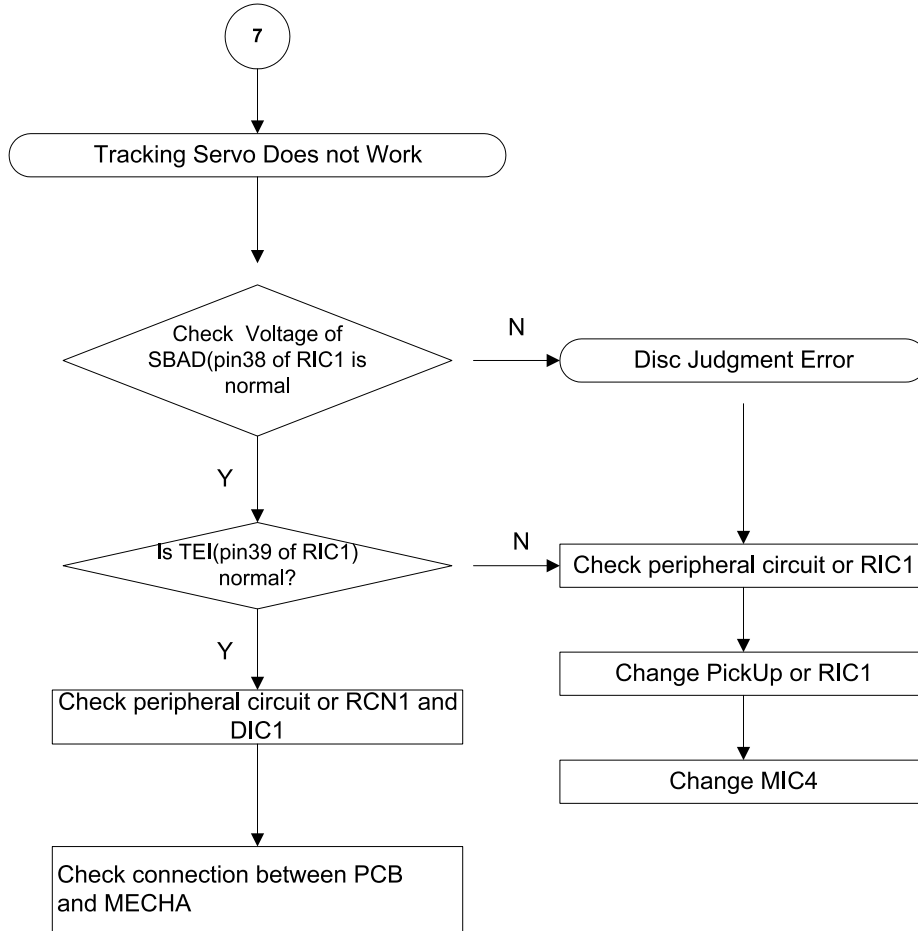
5. Disc Motor Does Not Rotate



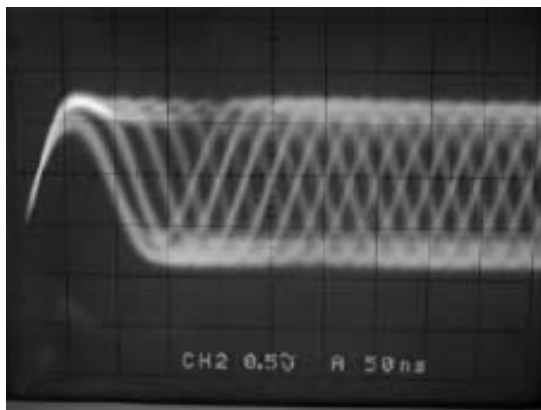
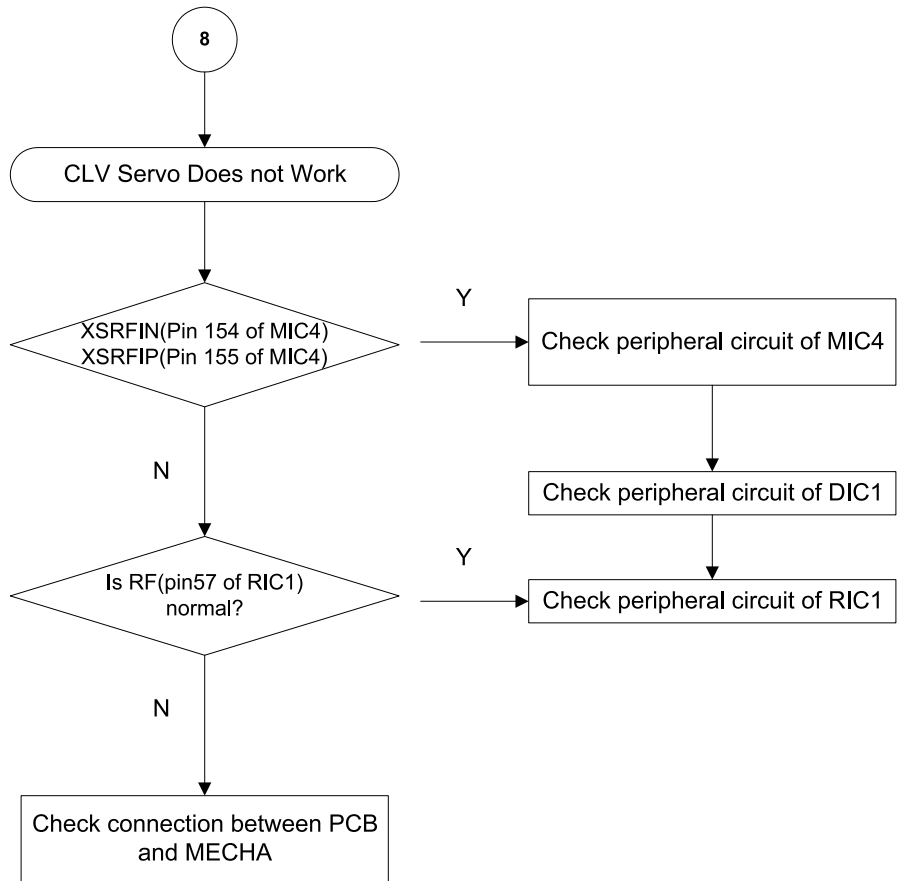
6. Focus Servo does not Work



7. Tracking Servo Does Not Work



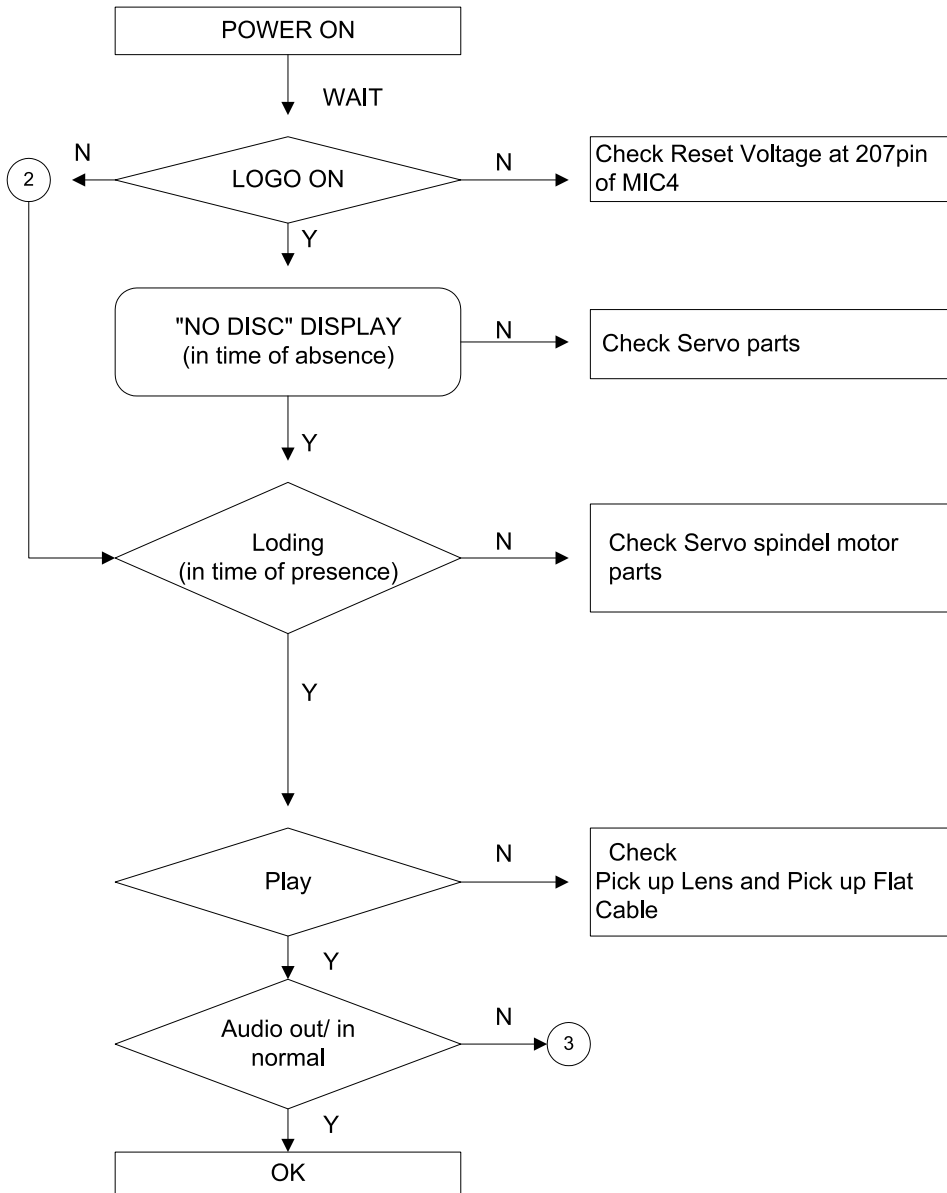
8. CLV Servo Does Not Work



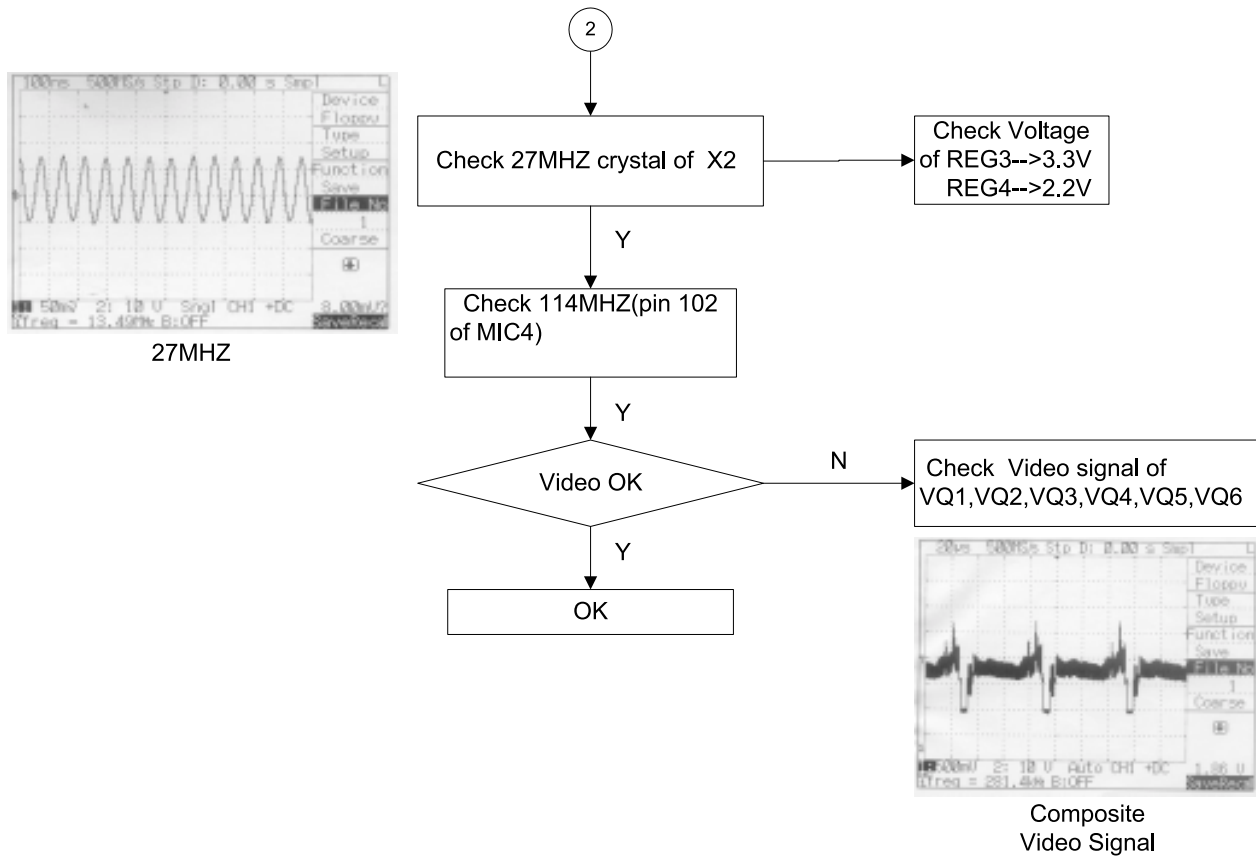
RF Signal

8-3 DVD MPEG Parts

1. Initial operation after NO



2. Logo operation



3.Audio operation

