

# **15"LED COLOR TV Service Manual**

**MODEL NO.:**

**TLE15H400B  
TLE15H401B**

**Contents**

Safety Notice .....03

Supported Operating Modes .....04

Specifications .....05

Location and Function of Controls.....07

Exploded view and mechanical parts list .....09

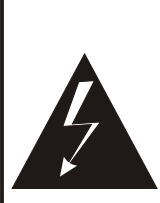

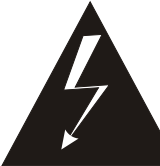

Illustration of actual object .....12

Driver PCB Principle Diagram .....15

Inverter PCB Principle Diagram.....35

Block Diagram.....37

## Safety Notice

	<p><b>CAUTION</b></p> <p>RISK OF ELECTRIC SHOCK DO NOT OPEN</p>		<p>TO REDUCE THE RISK OF ELECTRIC SHOCK. DO NOT REMOVE COVER. NO USER-SERVICEABLE PARTS INSIDE. REFER SERVICING TO QUALIFIED SERVICE PERSONNEL.</p>	
	<p>This symbol indicates “dangerous voltage” inside the product that presents a risk of electric shock or personal injury.</p>			<p>This symbol indicates important instructions accompanying the product.</p>

### Read this Manual

Read this manual thoroughly before operating the unit.

### Keep this manual

Keep this manual for future reference.

### Observe all warnings

All warnings on the product and in the manual must be observed closely.

### Follow all instructions

All operating instructions in the manual must be followed.

### Do not insert liquids or objects

Liquids or objects could result in fire or electrical shock. Use special caution in households where children are present. If liquids or objects should enter the LED TV, immediately turn off the power switch, disconnect the power plug from the DC outlet and contact the qualified service personnel.

- Do not place the LED TV near the bathtub, bathroom, kitchen sink, wet basement or swimming pool, and the like.
- Do not expose the LED TV to rain or moisture.
- Do not place flower vases, pots, cups, cosmetics, liquids as water, etc on or around the LED TV.
- Do not place metals, combustibles, etc on or around the LED TV.
- Do not drip or splash liquid of any kind on the LED TV.

### Do not give the LED TV any shock or impact

If the LED TV should be shocked and/or broken, it could result in an injury, and continued use could result in fire or electrical shock.

If the glass panel is broken or damaged, immediately turn off the power switch, disconnect the power plug from the DC power outlet and contact the qualified service personnel.

### Prevent the unit from falling

- Fasten the LED TV to a wall using a cord or chain which is sufficient to support the weight of the LED TV. Before moving the LED TV, the cord or chain should be removed.
- Avoid children to climb on the LED TV.
- Do not place the LED TV on a bed, sofa, rug, similar surface. Do not place the LED TV on an unstable cart, stand, or table. The LED TV may fall, causing serious damage to the LED TV and/or serious personal injury, death.
- When the product is used on a trolley, care should be taken to avoid quick stops, excessive force, and uneven surfaces that may cause the product and trolley to overturn.

## Supported Operating Modes

### COMPONENT VIDEO (YPbPr) INPUT

Mode	Resolution	Horizontal Frequency (KHz)	Vertical Frequency (Hz)
576i/50	720X576	15.63	50.00
480i/60	640X480	15.73	60.00
576p/50	720X576	31.25	50.00
480p/60	640X480	31.47	60.00
720p/60	1280X720	45.00	60.00
1080i/50	1920X1080	28.13	50.00
1080i/60	1920X1080	33.75	60.00
1080p/50	1920X1080	56.25	50.00
1080p/60	1920X1080	67.50	60.00

### RGB INPUT

Resolution	Horizontal Frequency (KHz)	Vertical Frequency (Hz)	Comment
640x480	31.5	60	DOS
800x600	37.9	60	VESA
1024x768	48.4	60	VESA
1280X768	64.0	60	VESA
1360X768	47.7	60	VESA

### HDMI INPUT

Mode	Resolution	Horizontal Frequency (KHz)	Vertical Frequency (Hz)
480i	640X480	31.47	60.00
576p	720X576	31.25	50.00
720p/60	1280X720	45.00	60.00
1080i/50	1920X1080	28.13	50.00
1080i/60	1920X1080	33.75	60.00
1080p/50	1920X1080	56.25	50.00
1080p/60	1920X1080	67.50	60.00

- Modes, which are not listed in the above table, may not be supported. For an optimal picture is recommended to choose a mode listed in the table.
- The incoming display modes compatible with WINDOWS as shown in the table above.
- Sometimes, the image may be disrupted due to the frequency standard from the VGA card. However, this is not an error. You may improve this situation by activating the automatic adjustment or by manually changing the phase and the clock settings in the menu.
- To extend the service life of the product, we recommend that you use your computer's power management function.

## Specifications

MODEL	TLE15H400B	TLE15H401B
<b>PC Resolution</b>		
Maximum Mode	1360 X 768@ 60Hz	1360 X 768@ 60Hz
<b>Input Source</b>		
Sync.	H/V separate, TTL, P. or N.	H/V separate, TTL, P. or N.
Video Signal	1Vp-p @ 75 ohm	1Vp-p @ 75 ohm
RGB Signal	0.7 Vp-p @ 75 ohm	0.7 Vp-p @ 75 ohm
<b>TV</b>		
Color System	ATV: PAL, SECAM	ATV: PAL, SECAM
Sound System	BG, DK, I	BG, DK, I
<b>Video</b>		
Color System	PAL/SECAM/NTSC	PAL/SECAM/NTSC
Video Format	CVBS, S-VHS, RGB	CVBS, S-VHS, RGB
<b>Power Supply</b>		
Input	DC 12V	DC 12V
<b>Power Consumption</b>		
Working	36W	36W
Standby	≤ 1W	≤ 1W
<b>Environmental Considerations</b>		
Operating Temperature	10°C ~ 40 °C(50°F ~ 104°F)	10°C ~ 40 °C(50°F ~ 104°F)
Operating Humidity	10% ~ 80%	10% ~ 80%
<b>Audio Characteristics</b>		
Audio Input	RCA Jack (L, R), 0.5Vrms (-9dB)	RCA Jack (L, R), 0.5Vrms (-9dB)
Audio Input (PC)	Ø3.5 Stereo, 0.5Vrms (-9dB)	Ø3.5 Stereo, 0.5Vrms (-9dB)
Frequency Response	RF: 100Hz~10KHz (at ± 3dB) A/V: 100Hz~12KHz (at ± 3dB)	RF: 100Hz~10KHz (at ± 3dB) A/V: 100Hz~12KHz (at ± 3dB)
<b>Dimension (WXDXH) mm</b>		
Without Stand	390X37X254	411X47X280
With Stand	390X147X296	411X139X320
<b>Weight (Kg)</b>		
Net Weight	≈1.7	≈1.8
Gross Weight	≈3.0	≈3.3

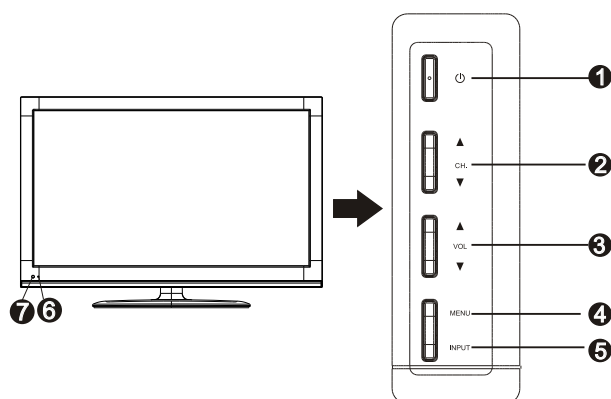
**Note:**

- Design and specifications are subject to change without notice.
- Weight and dimensions shown are approximate values only.

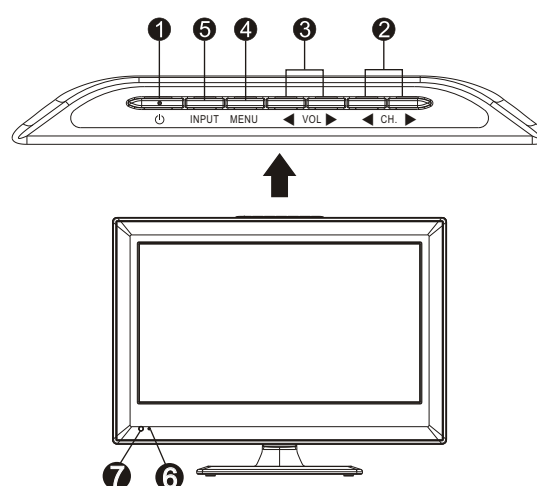
## Location and Function of Controls

### FRONT PANEL

TLE15H400B



TLE15H401B:



NO.	Button Name	Description
①		Switch on the LED TV when at standby mode and vice versa.
②	CH.▲/▼	When you are watching the TV program, press these buttons to select channel in ascending or descending order. Select the upper or lower menu item in the OSD menu.
③	VOL ▲ /▼	Increase or decrease the volume. Adjust the values of the selected menu item in the OSD menu.
④	MENU	Enter or exit from the menu.
⑤	INPUT	Select the input signal.
⑥	Power Indicator	Illuminates red in standby mode. Illuminates green when the LED TV is switched on.
⑦	Remote Sensor	Infrared sensor for the remote control.

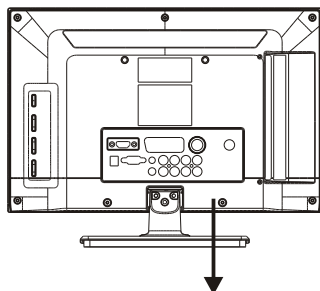
#### Note:

If there is no signal input for 5 minutes, the LED TV will switch to standby automatically. The power indicator will light up in red.

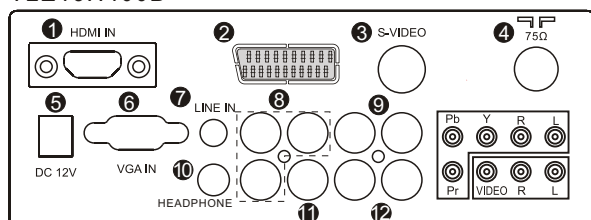
## Control Buttons and Terminals

### REAR PANEL

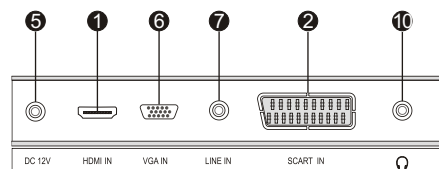
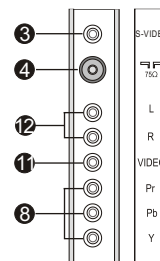
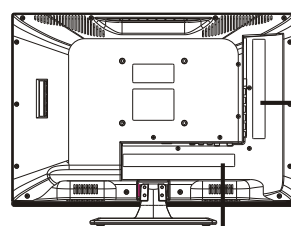
TLE15H400B



TLE15H400B



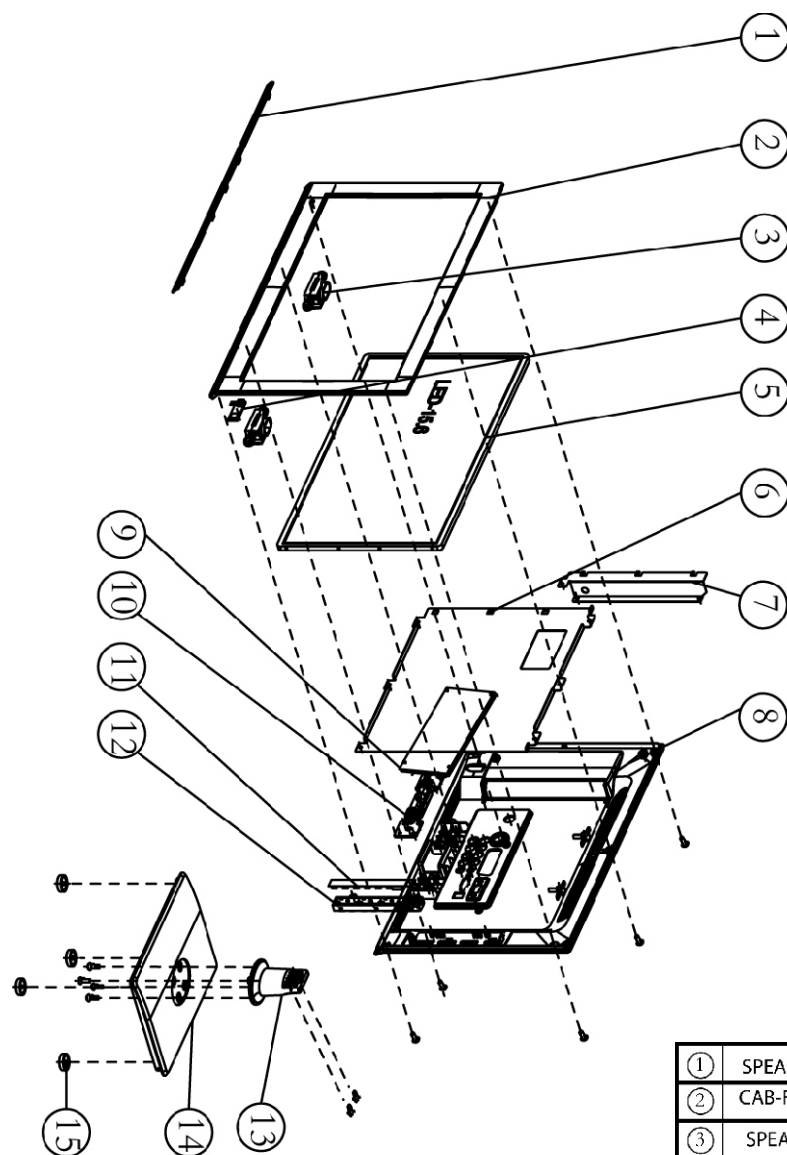
TLE15H401B:



- ❶ HDMI Input Connector: Connect it to the HDMI of DVD or other external equipment.
- ❷ SCART Connector: Connect them to the composite terminal of DVD.
- ❸ S-Video In Connector: Connect to the S-Video output of a DVD player or other equipment.
- ❹ RF Input Socket: Connect antenna or cable 75 ohm coaxial to receive TV signal.
- ❺ DC 12V In Terminal: Connect to the adapter.
- ❻ VGA Input Terminal: Connect it to the D-Sub 15 pins analog output connector of the PC with the VGA cable.
- ❼ LINE IN Terminal: Connect it to the audio output terminal of PC-RGB mode.
- ❽ YPbPr Video Input Terminals: Connect them to the YPbPr component output terminal of DVD or other external equipment.
- ❾ YPbPr Audio Input Terminals: Connect to the audio output of a DVD player or other equipment with Component mode in YPbPr mode.
- ❿ Headphone Connector: Connect it to the headphone.
- ⓫ Video-In Connector: Connect to the AV output of a DVD player or other equipment.
- ⓬ Audio-In Connectors: Connect to the audio output of a DVD player or other equipment with AV/S-Video mode.

## Exploded view and mechanical parts list

TLE15H401B



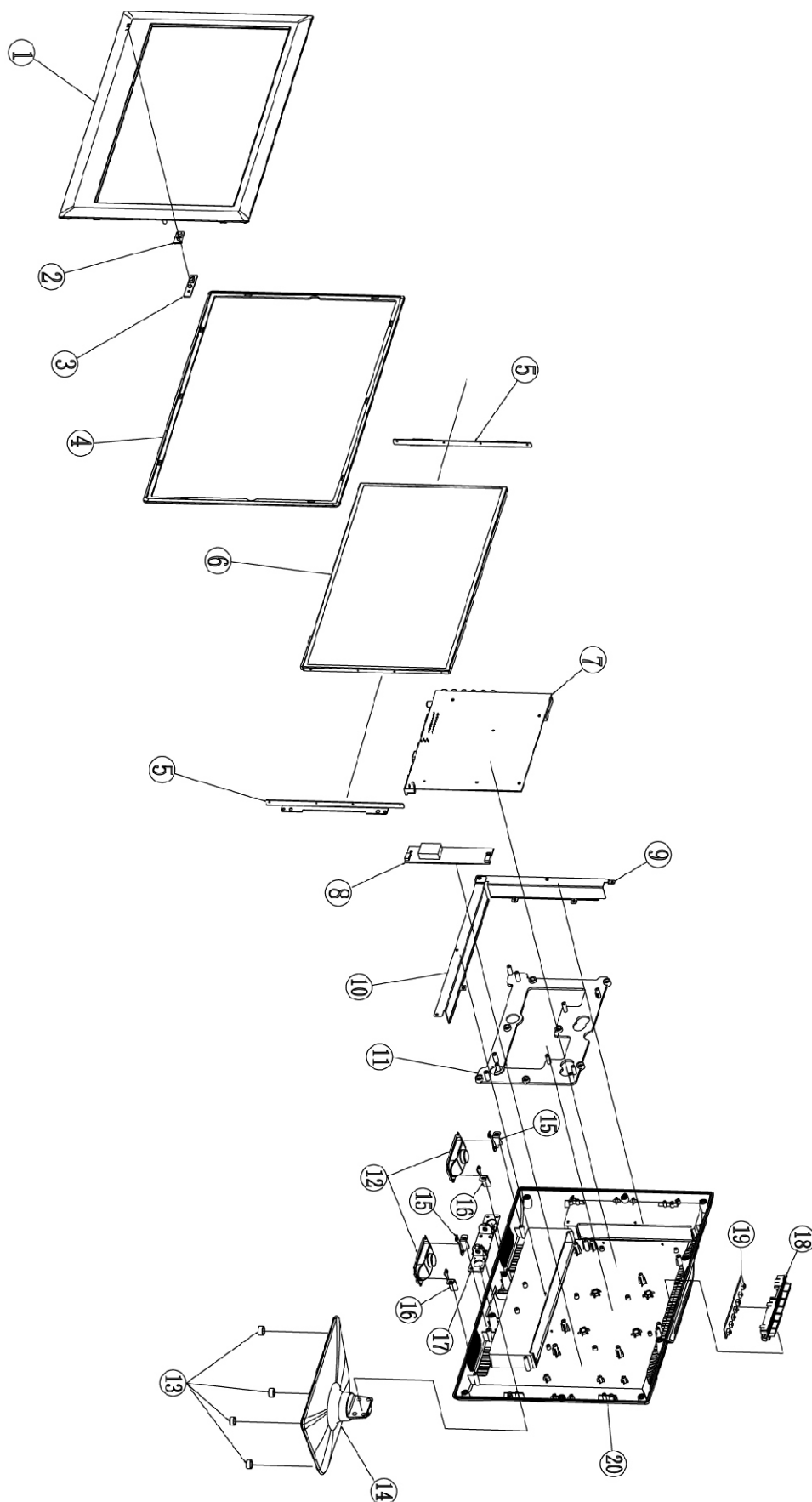
①	SPEAKER GRILLE
②	CAB-FRONT
③	SPEAKER
④	LAMP LENS-PMMA
⑤	PANEL
⑥	DISPLAY BRACKET
⑦	ERMINAL PLATE
⑧	TV CAB BACK
⑨	DRIVE ASS'Y
⑩	STAND HINGE ASS'Y
⑪	TV CONTROL KEY PCB
⑫	FUNCTION KEY
⑬	STAND BRACKET
⑭	BASE COVER
⑮	RUBBER PAD CORD



## Exploded view and mechanical parts list

TLE15H400B

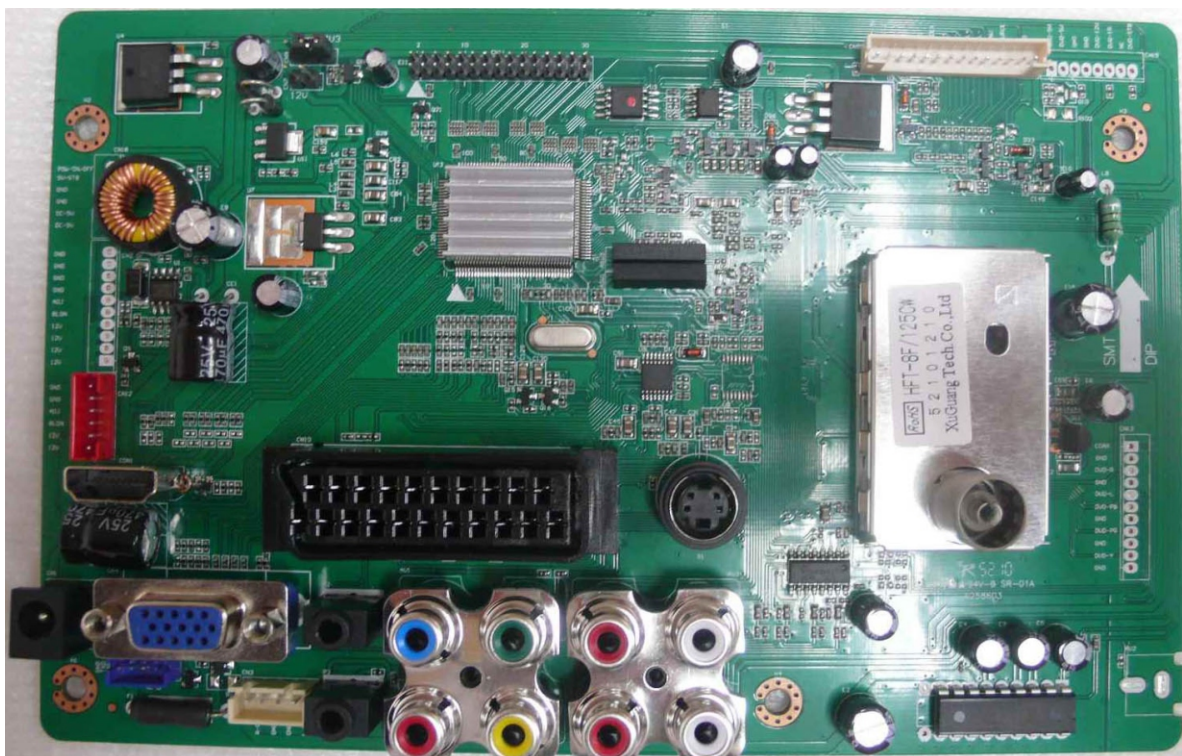
19	FUNCTION KEY PCB	1
18	FUNCTION KEY	1
17	STAND HINGE ASS'Y	1
16	SPEAKER BRACKET-R	2
15	SPEAKER BRACKET-L	2
14	BASE COVER HIPS	1
13	RUBBER PAD CORD	4
12	SPEAKER	2
11	DISPLAY BRACKET	1
10	TERMINAL PLATE (DOWN)	1
9	TERMINAL PLATE (UP)	1
8	POWER PCB	1
7	DRIVE ASS'Y(LED)	1
6	LED PANEL	1
5	PANEL BRACKET	2
4	DECOR FRONT	1
3	IR DETECTOR	1
2	LAMP LENS-PMMA	1
1	CABINET FRONT	1
PCNO	PART NAME	QTY



## Illustration of actual object(1)

PCB name : Drive PCB ( obverse )  
Drive PCB Model No.: LA.MV6.D

TLE15H400B



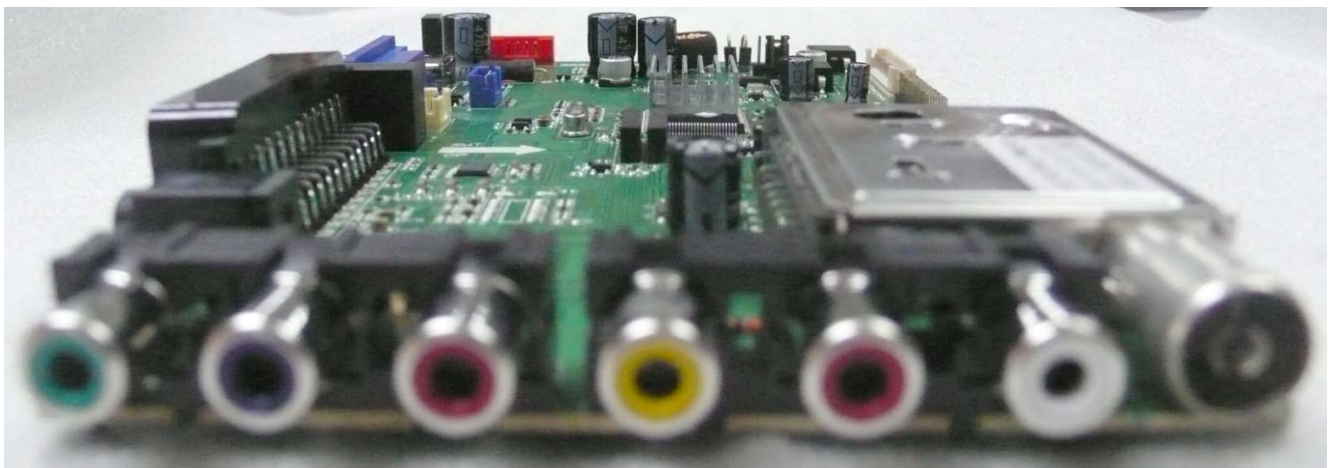
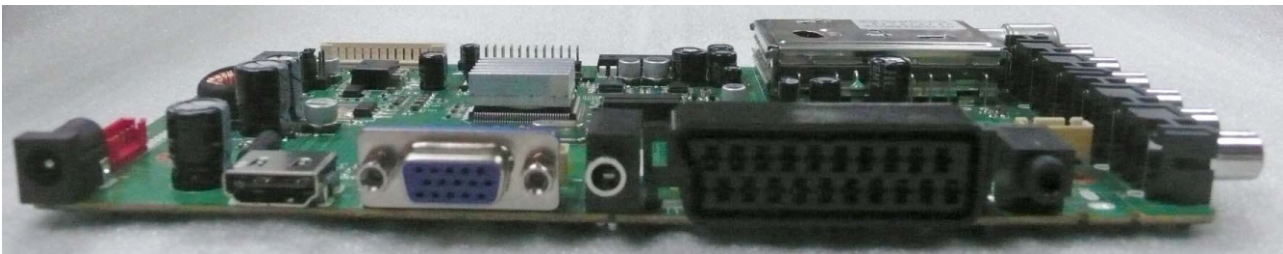
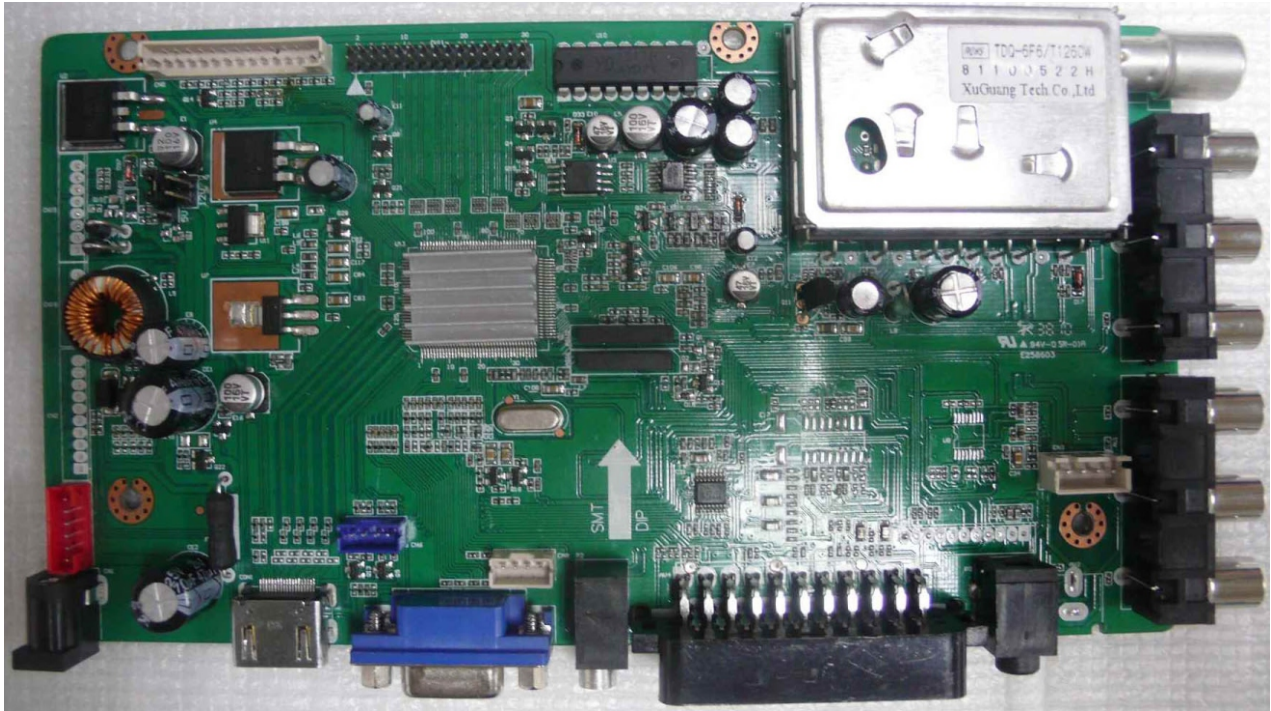


## Illustration of actual object(2)

PCB name : Drive PCB ( obverse )

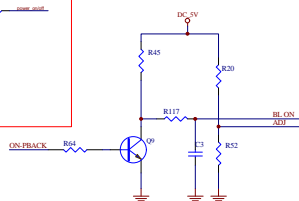
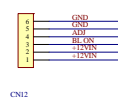
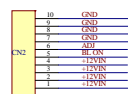
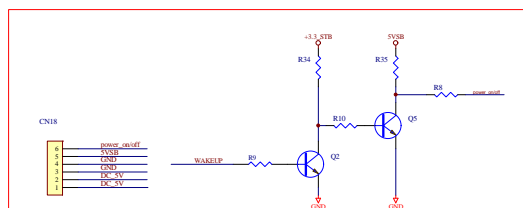
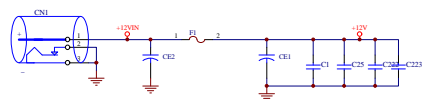
Drive PCB Model No.: LA.MV6.C

TLE15H401B

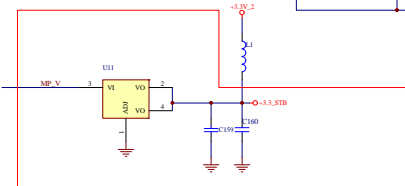
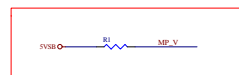
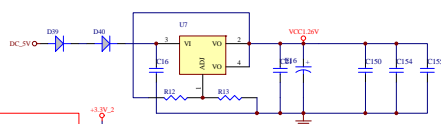
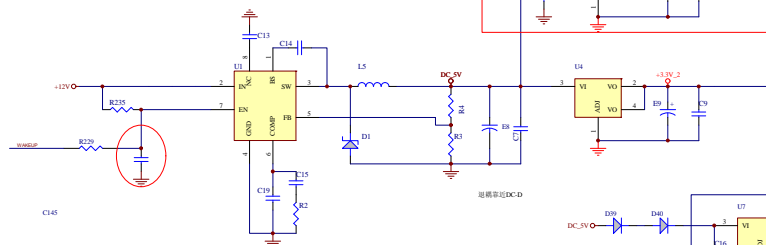
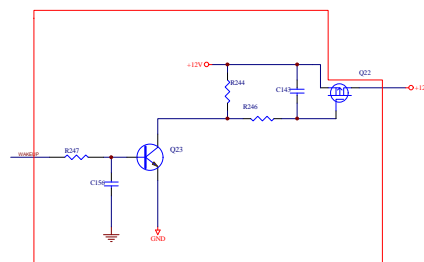
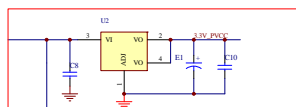


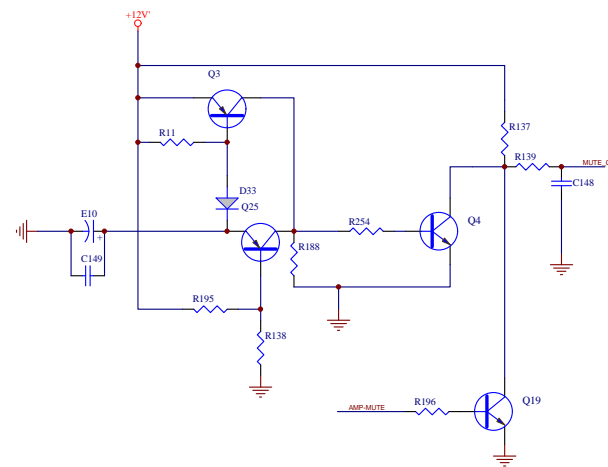
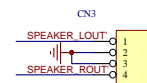
## Driver PCB Principle Diagram

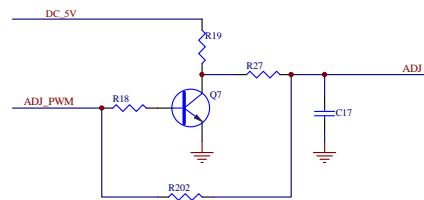
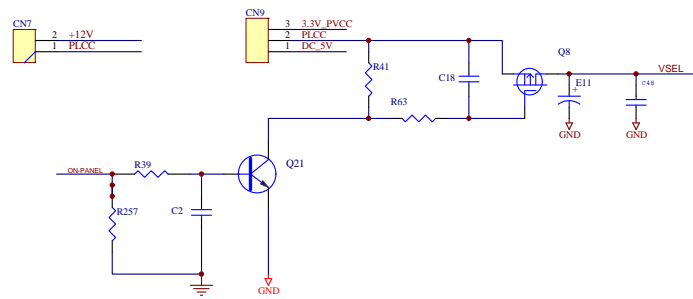
TLE15H400B

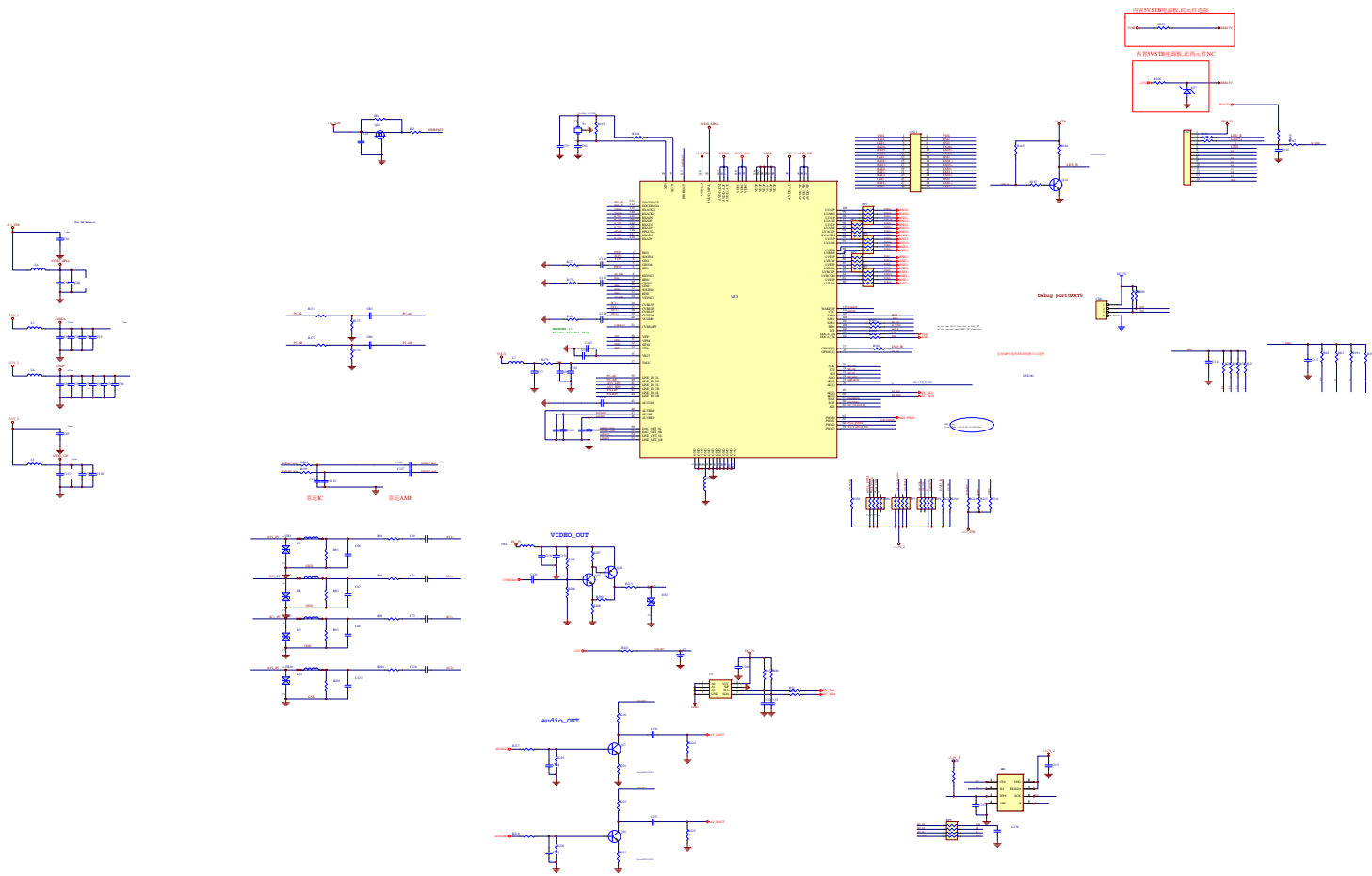


Inverter

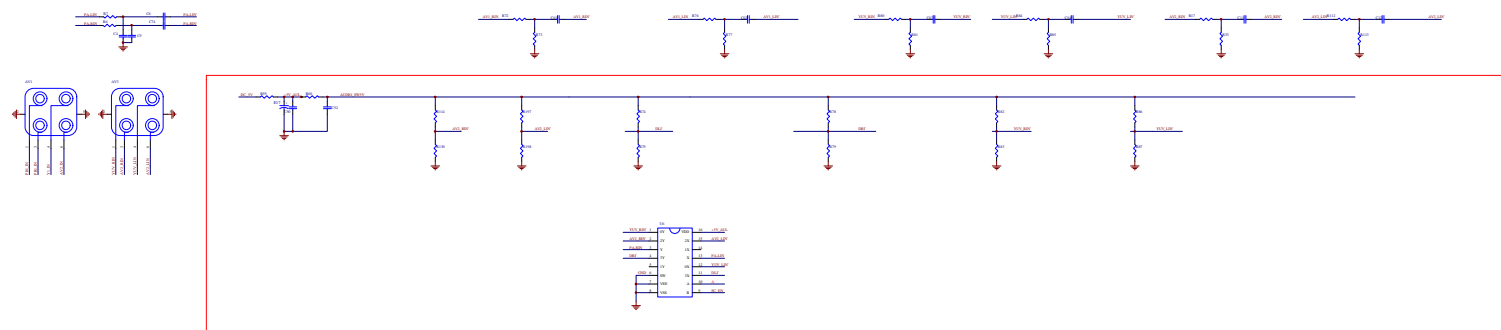


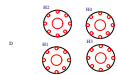






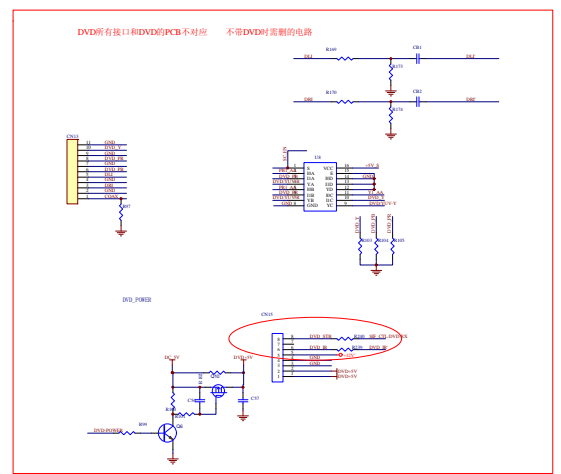
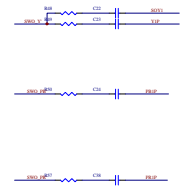
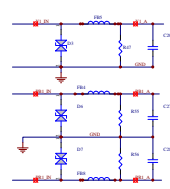
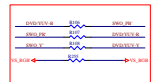
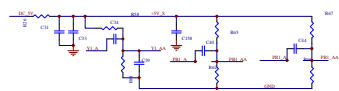
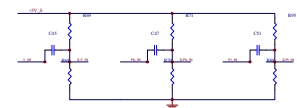
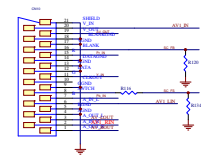
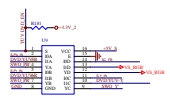


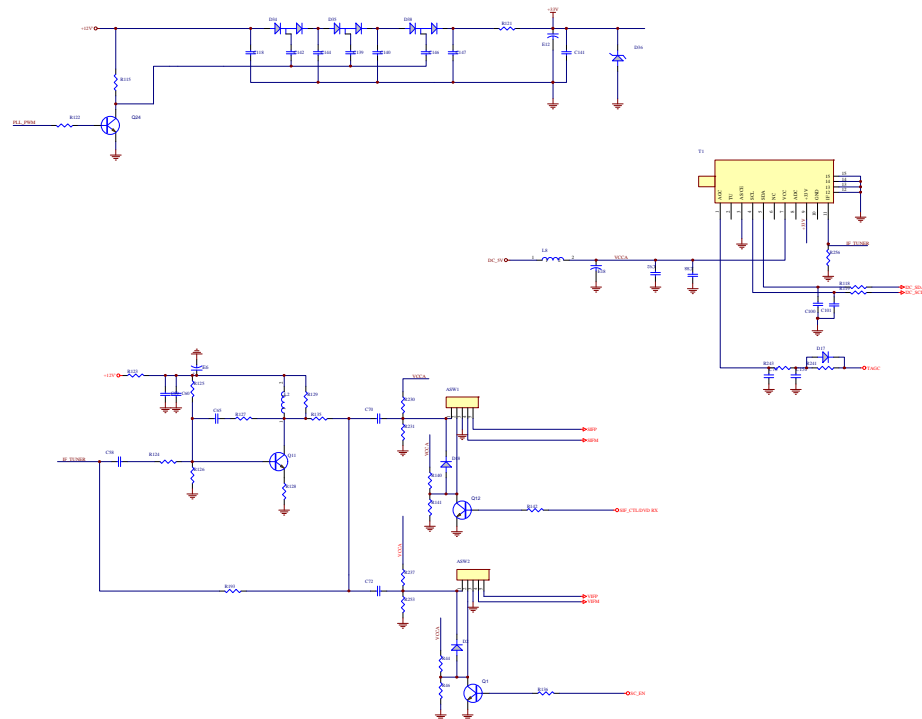


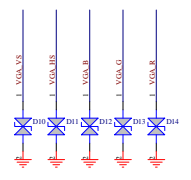
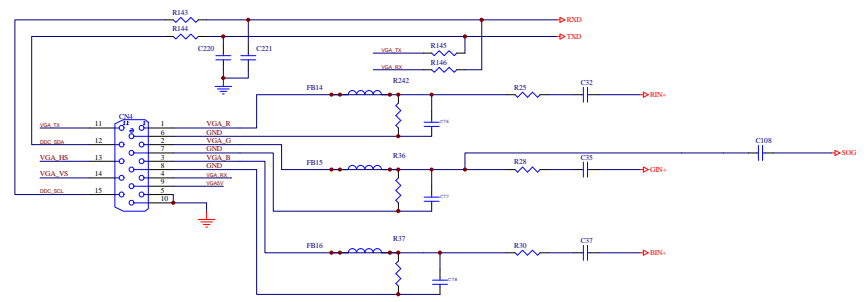
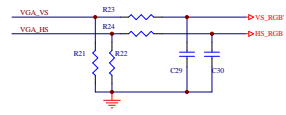


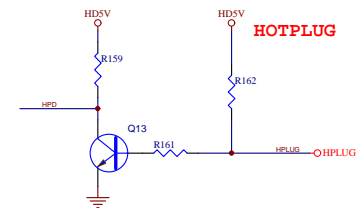
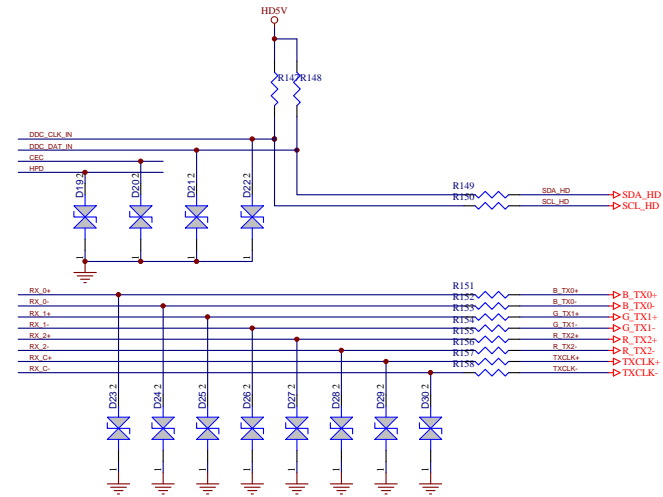
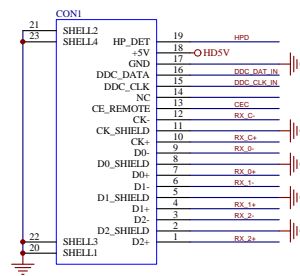
1

2



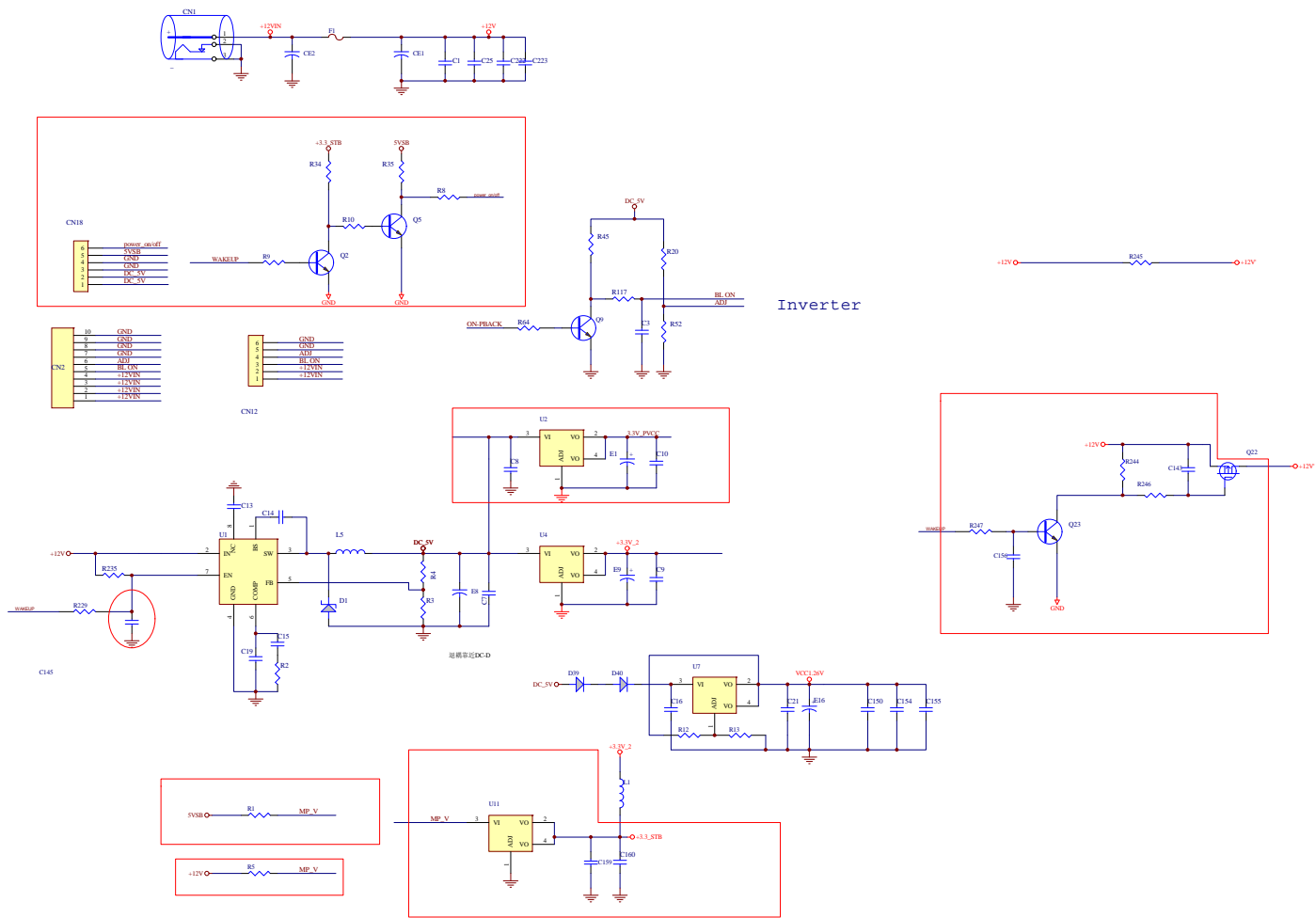


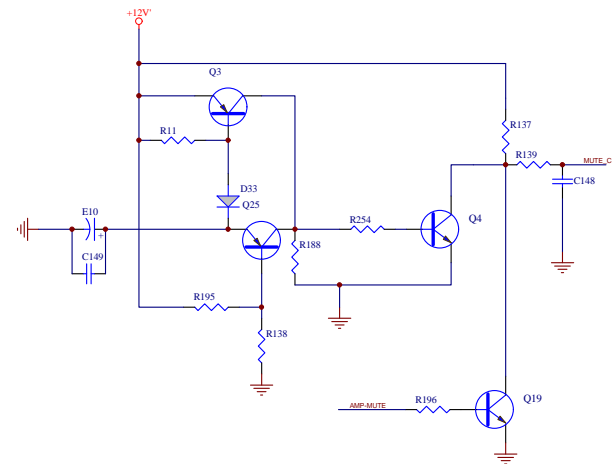
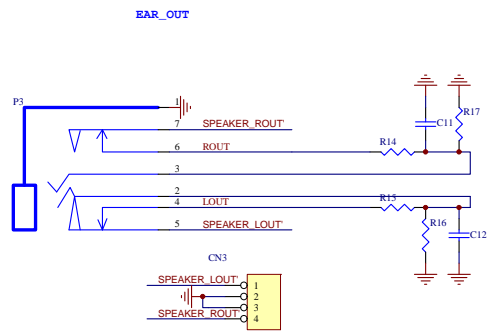
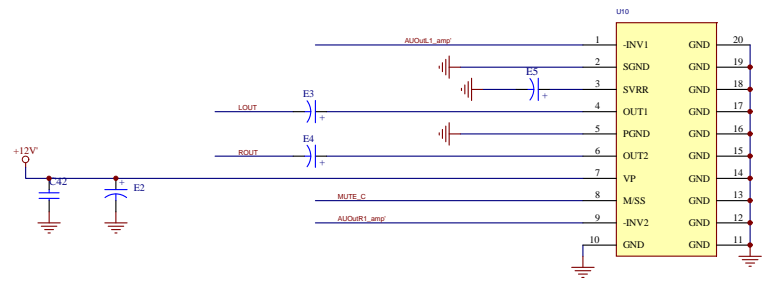




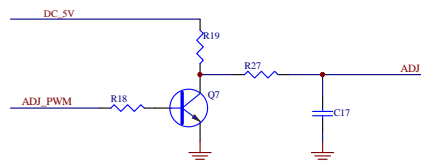
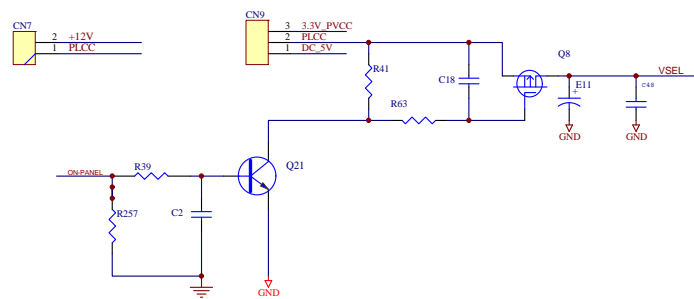
## Driver PCB Principle Diagram

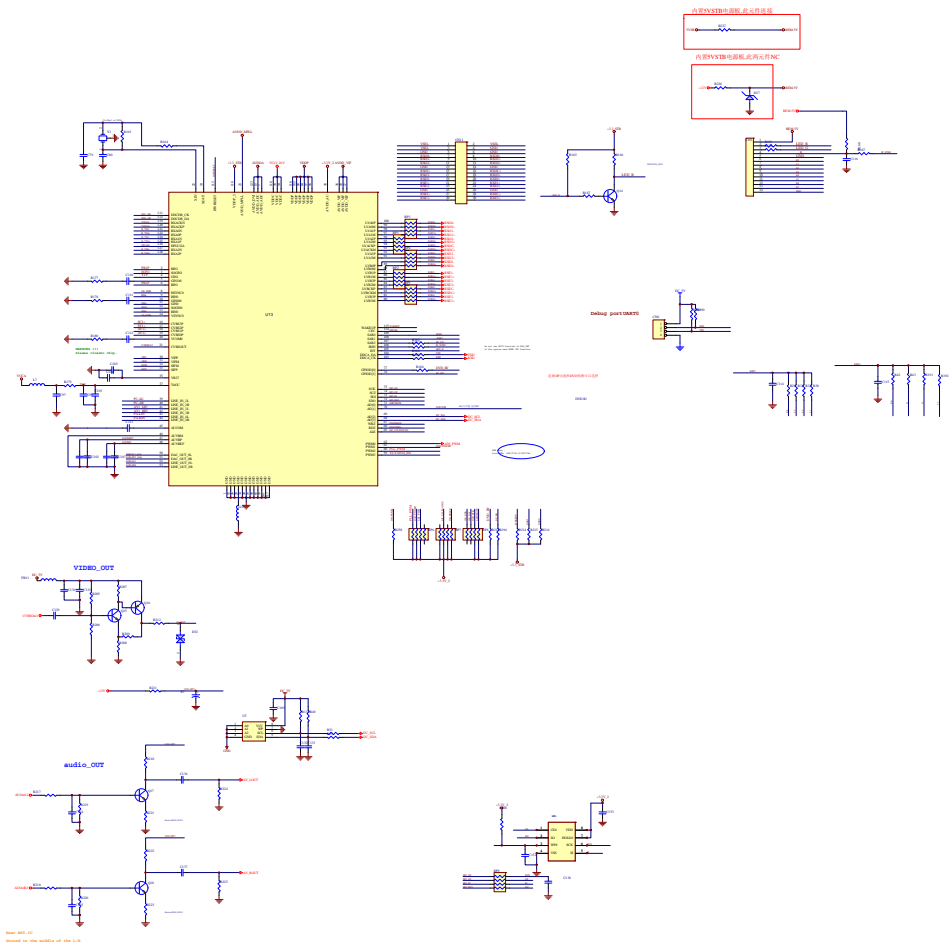
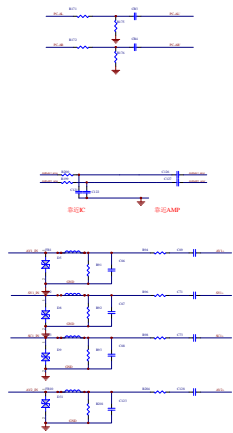
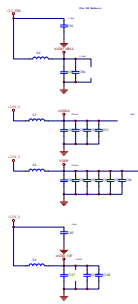
TLE15H401B

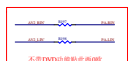
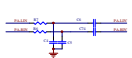




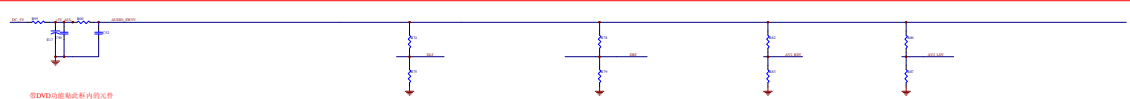
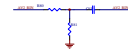
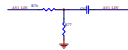
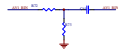




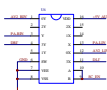


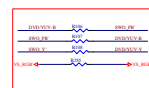
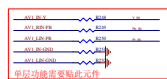
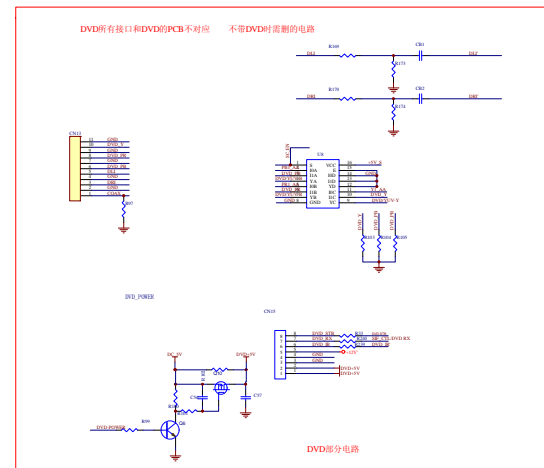
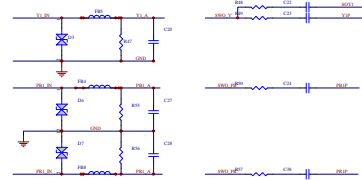
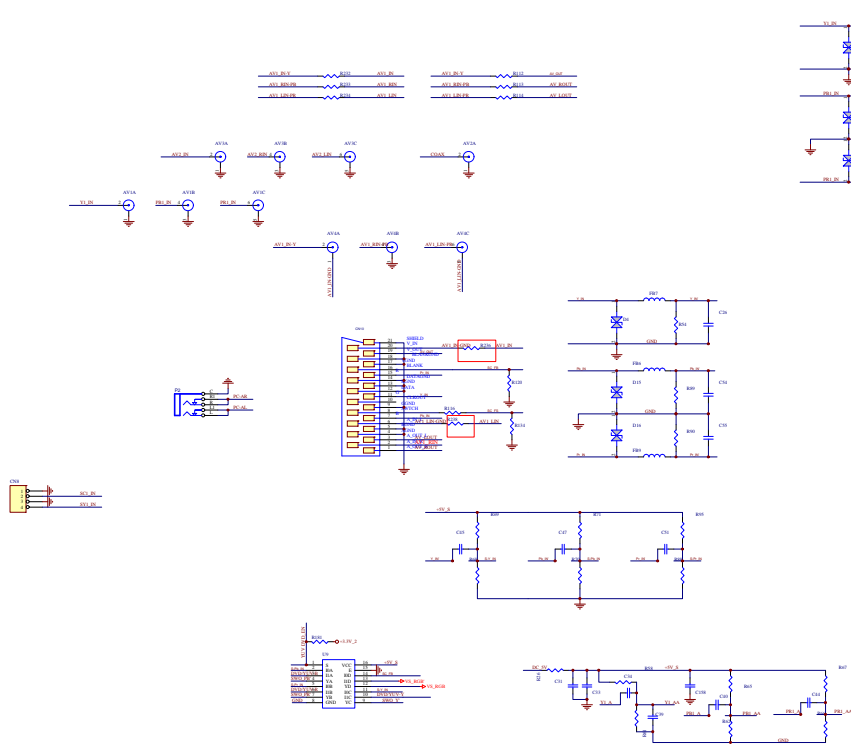


本图DVD功能板内部结构

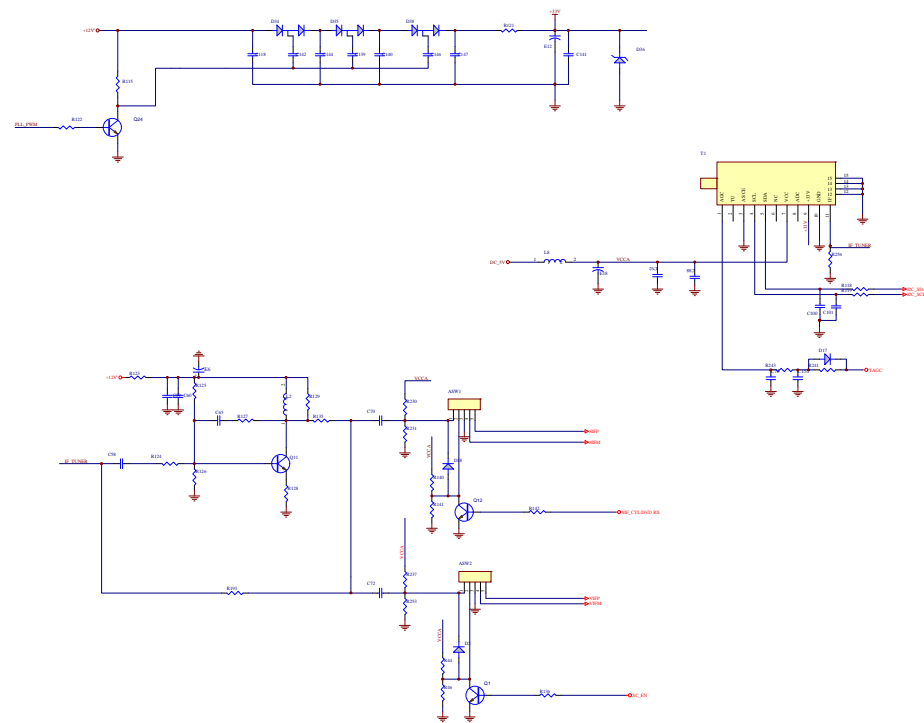


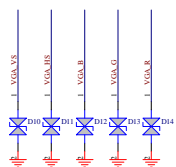
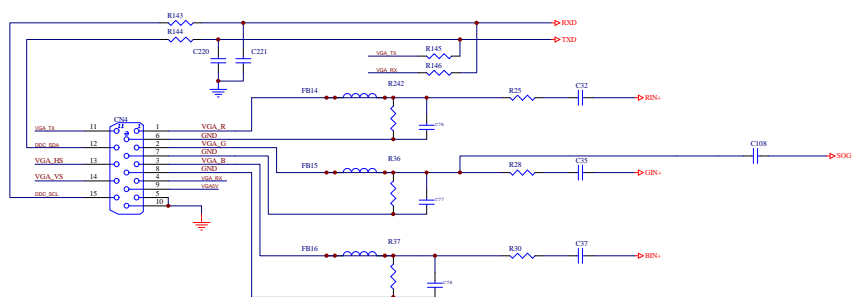
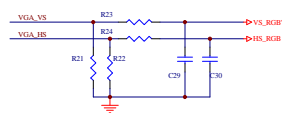
图DVD功能板内部结构

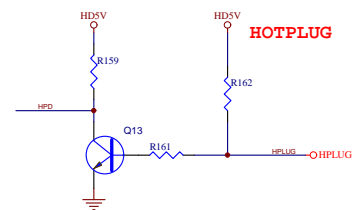
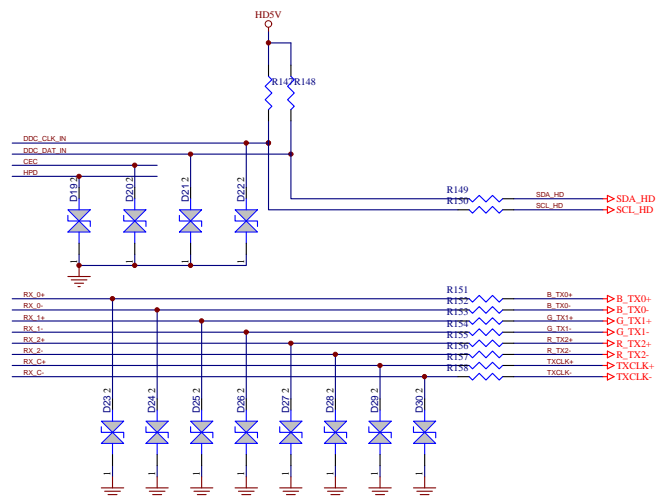




不带SCART, 带DVD和YPRN线及Ypge和DVD可二选一

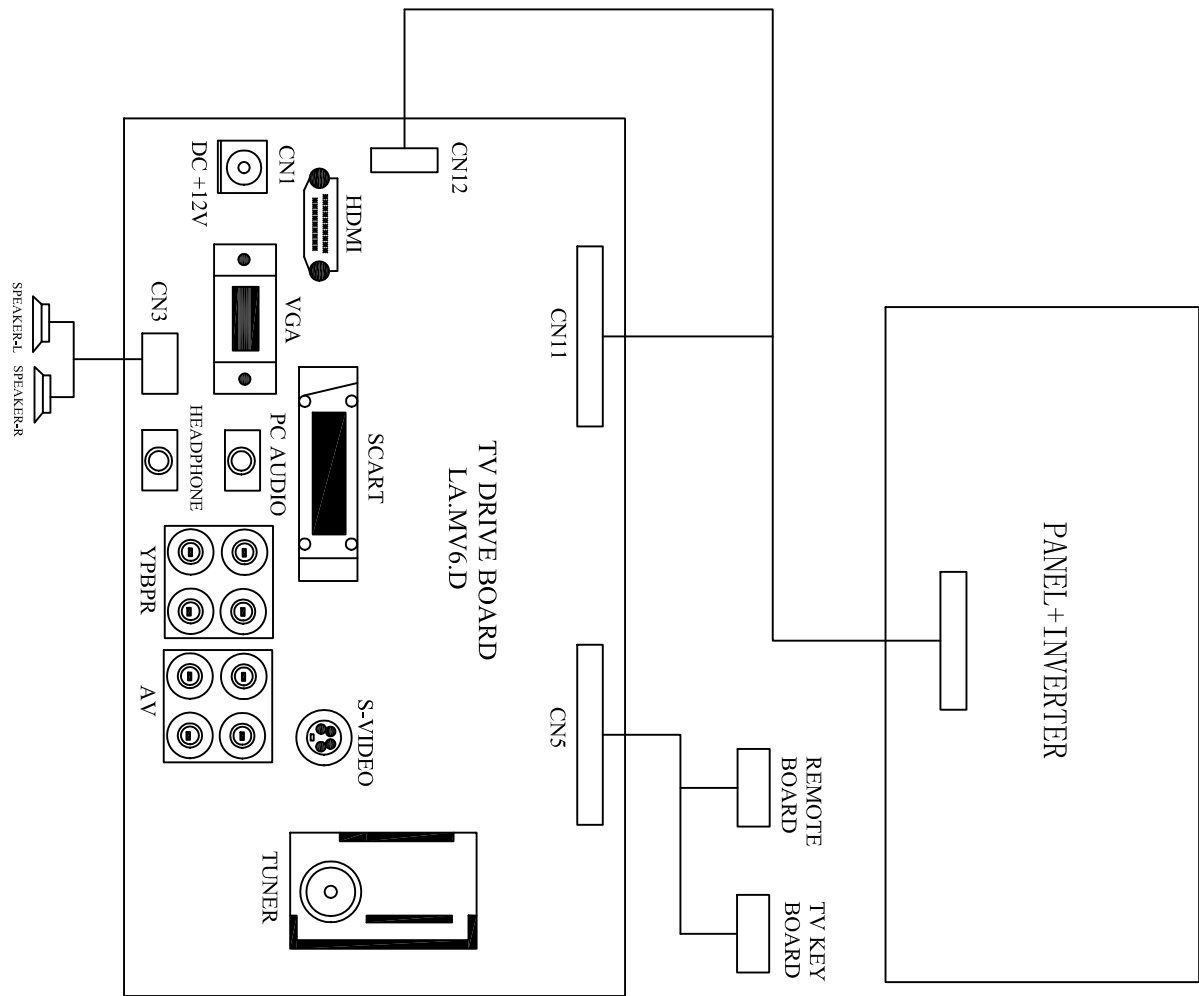






Block Diagram

TLE15H400B



E16531E6900/TLE15H400B



Block Diagram

TLE15H401B

