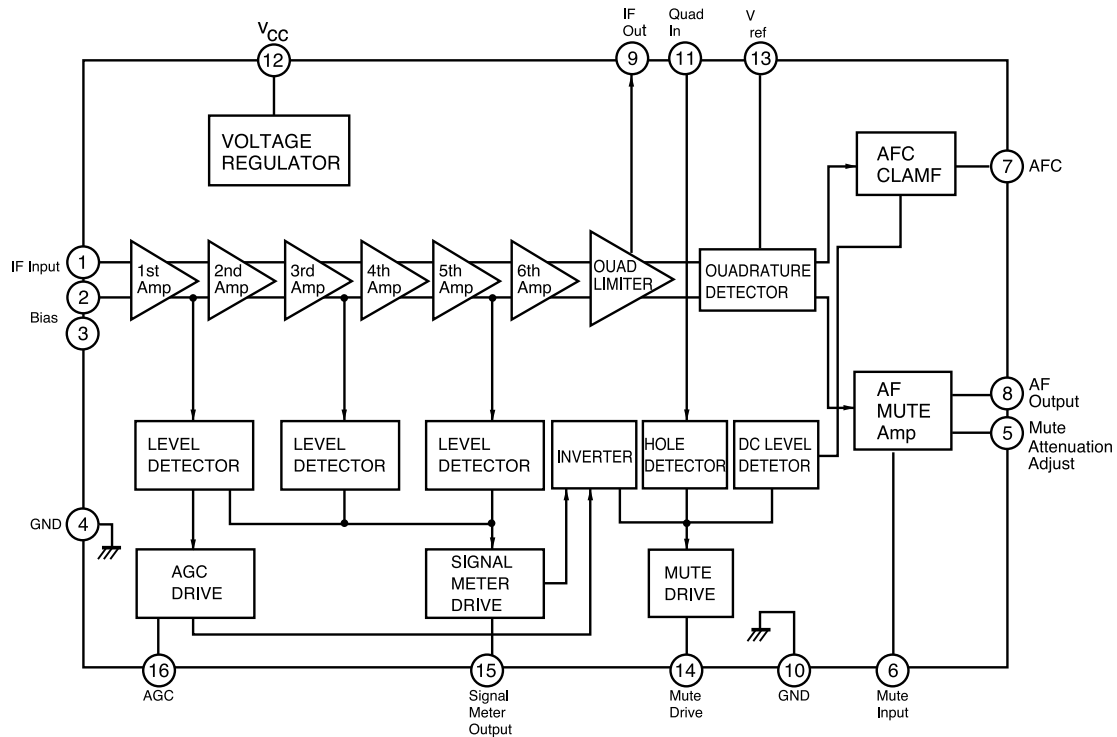
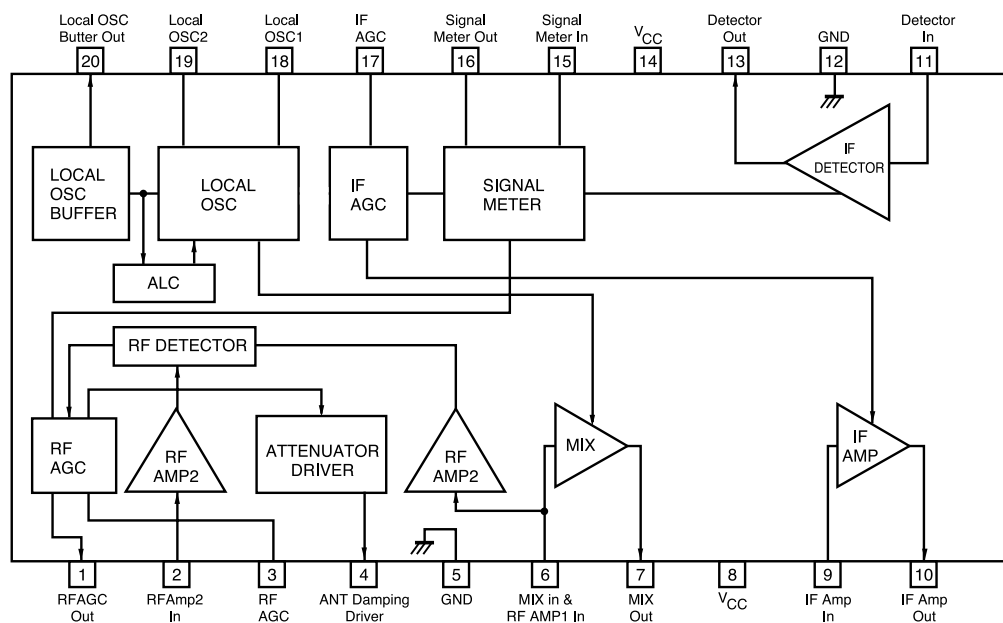


## INTERNAL BLOCK DIAGRAM of Ics

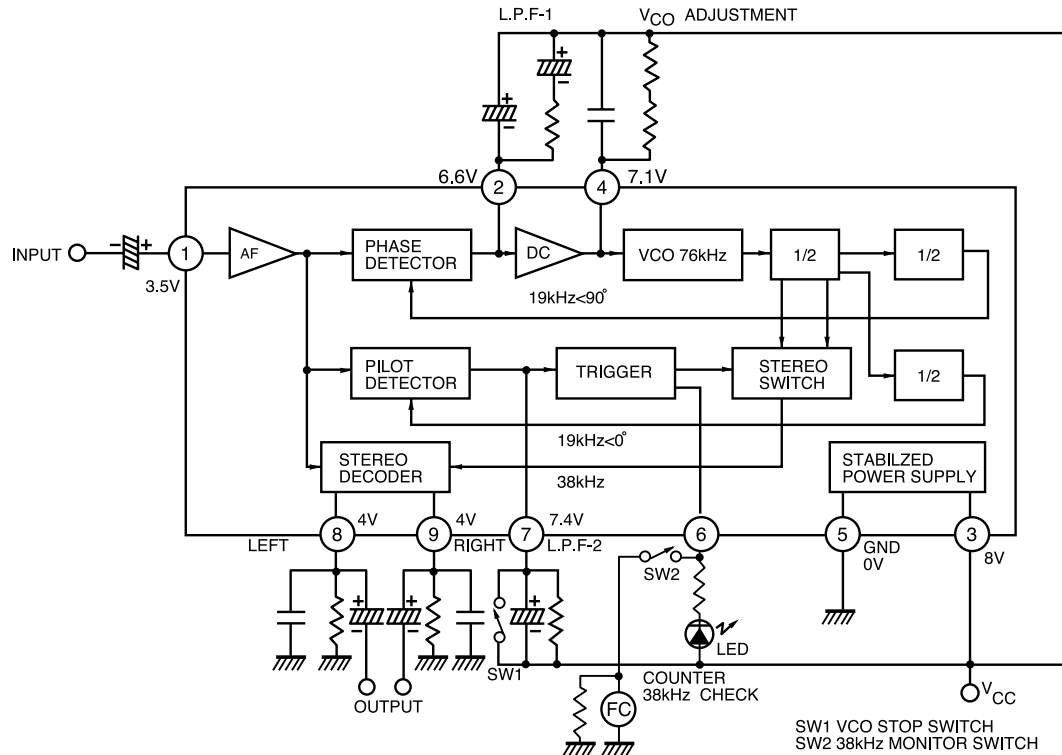
■ IC101 DBL 1018(LA 1140)



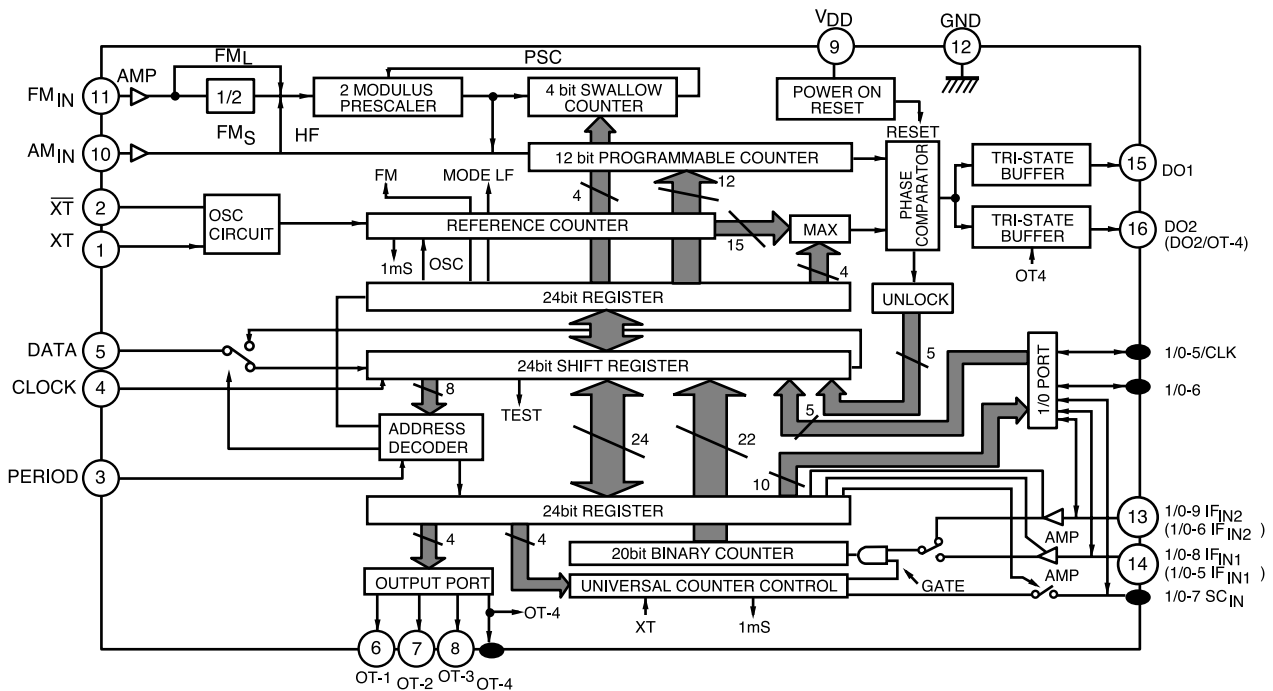
■ IC201 DBL 1019 (LA1135)



## ■ IC301 KIA6043S



## ■ IC401 KIC9256P

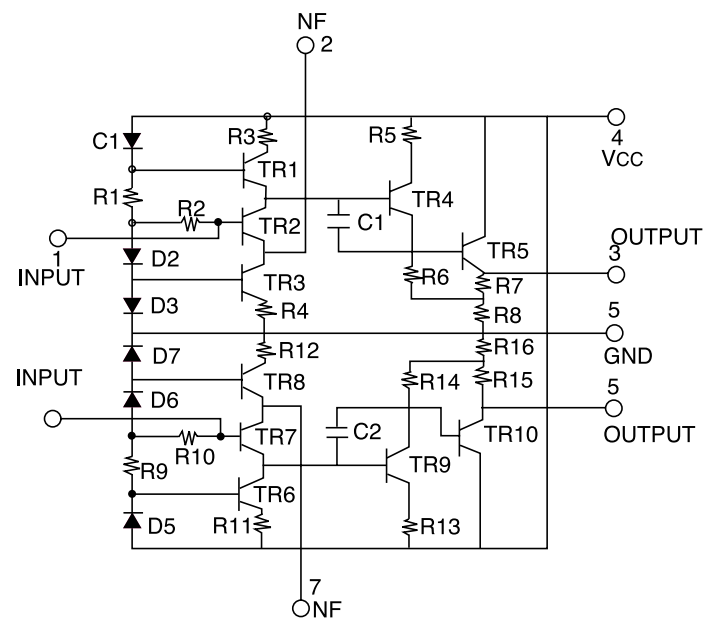


**NOTE:** Mark terminals are not existence in KIC9256P, KIC9256F  
Terminal name of KIC9256P, KIC9256F is shown in parentheses.  
Others are common terminals.

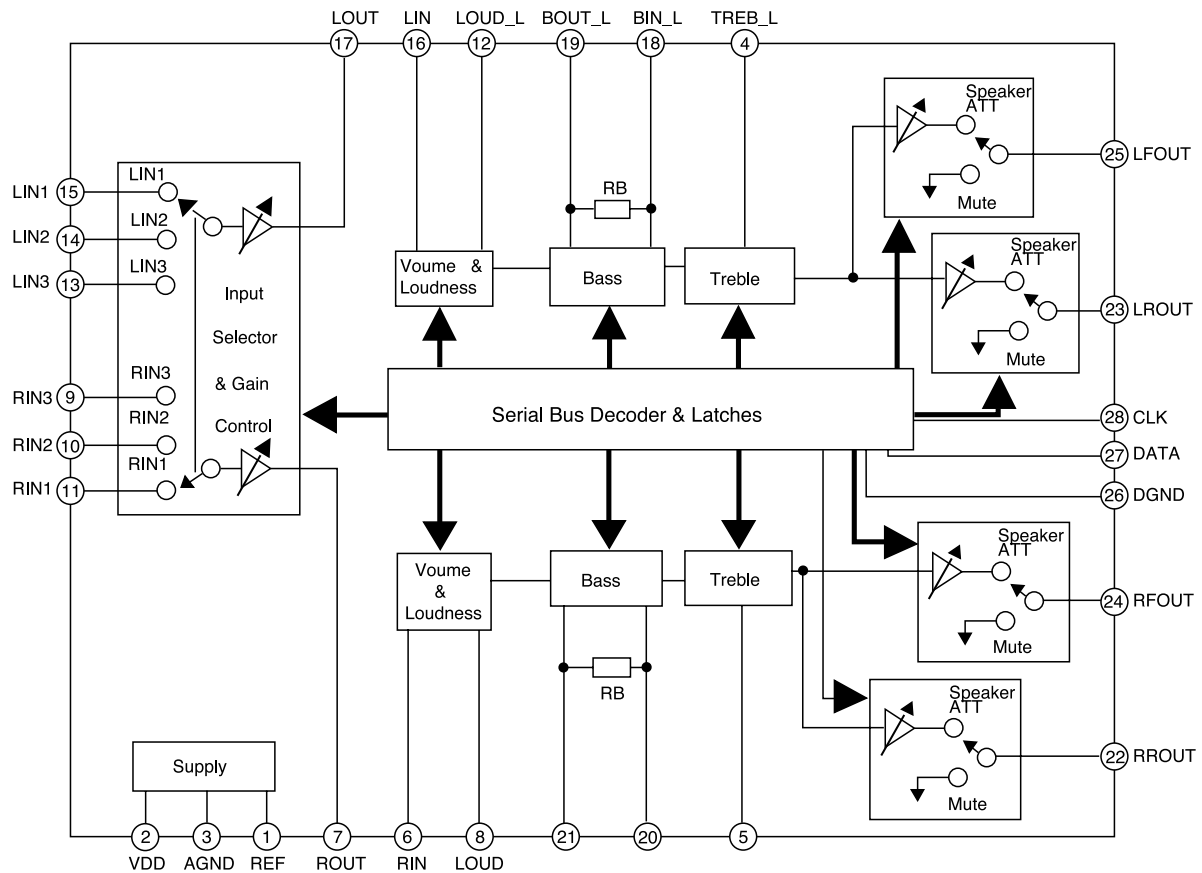
## ■ IC402 $\mu$ PD789104GS-204

PIN	Port	P-NAME	I/O	Act	DESCRIPTION	When not used	REMARK
1	P23	FRTCLK	O I		FRONT IC CLOCK Data OUTPUT DIODE MATRIX as DIO IN2 line		
2	P24	ACC IN	I		ACC DETECT INPUT ACTIVE = LOW		
3	P25	CDC DI	I	L	CD CHANGER DATA INPUT		
4		Avdd			A/D Reference Voltage (5V)		
5	P60	KEYIN	I		AD KEY - IN input. Used for also front panel detecting. Less than 0.17V : regarded as the panel opened. Refer to application circuit.		
6	P61	DIR	I	H/L	TAPE DIRECTION INPUT (H = FORWARD)		
7	P62	SD			Tuner SEEK stop detector input - Seek Stop threshold voltage : AM : 1.2V, FM : 1.5V		
8	P63	STIN	I	L	FM Stereo detect input Active = Low		
9		AVSS			GROUND		
10		NC			NO CONNECTION		
11	P50	CDCO	O		CDC Data Output : Should be connected to CDCI		
12	P51	PEVDATA	O		E VR Communication DATA OUT		
13	P52	MUTE/LED	O		Used as Power IC mute. Active = Low Used as blinking LED. On duty = 10%		
14	P53	TPMUTE	I	L	TAPE MUTE INPUT (LOW = MUTE)		
15	P00	FRTDO/ DIO IN0	O I		FRONT IC DATA Out communication port Diode matrix IN0 input		
16	P01	CDON	O	H	When CDC mode this port is high output (future function)		
17	P02	POWER	O	H	When system is on, this port is used as power out port		
18	P03	TAPE IN	I	H	For tape mode, Active high voltage should be applied. L = RADIO mode.		
19		RESET			RESET INPUT		
20		IC			Connect to GROUND		
21		NC			NO CONNECTION		
22		X2			X-tal		
23		X1			X-tal		
24		Vss			System ground		
25		Vdd			System Power Supply (5V)		
26	P10	FINH	O	L	Front IC INH port.		
27	P11	PERI/ DIO OUT2	O O		PLL IC PERIODE communication port Diode matrix DIO OUT 2 line		
28	P20	PEVCLK DIO OUT0	O O		PLL IC and E. VOL IC CLOCK communication port Diode matrix DIO OUT 0 line		
29	P21	PDATA DIO OUT1	O O		PLL IC DATA communication port Diode matrix DIO OUT 1 line		
30	P22	FRTCE DIO IN1	O I		FRONT IC CE communication port Diode matrix DIO IN 1 line		

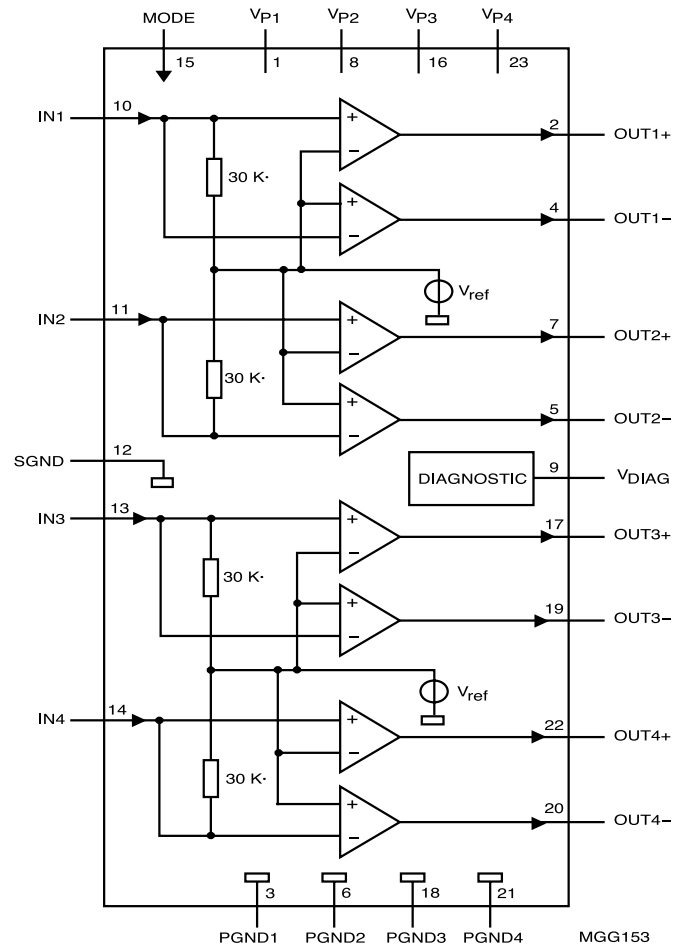
## ■ IC501 LA3160



## ■ IC601 PT2313L



## ■ IC801 TDA8571J



## ■ IC901 LC75833E

