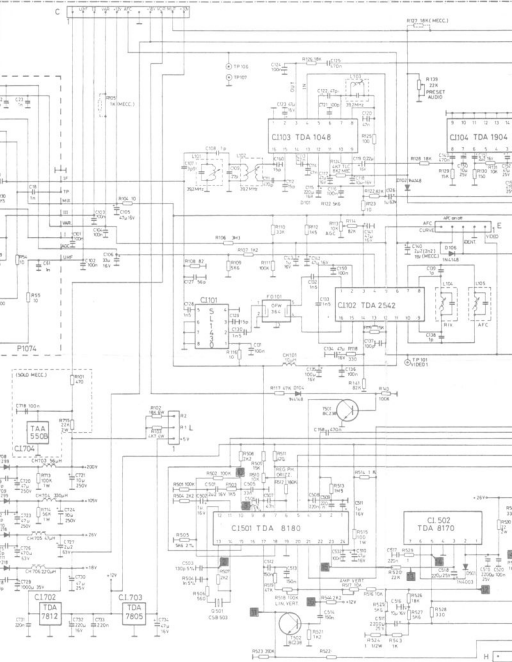


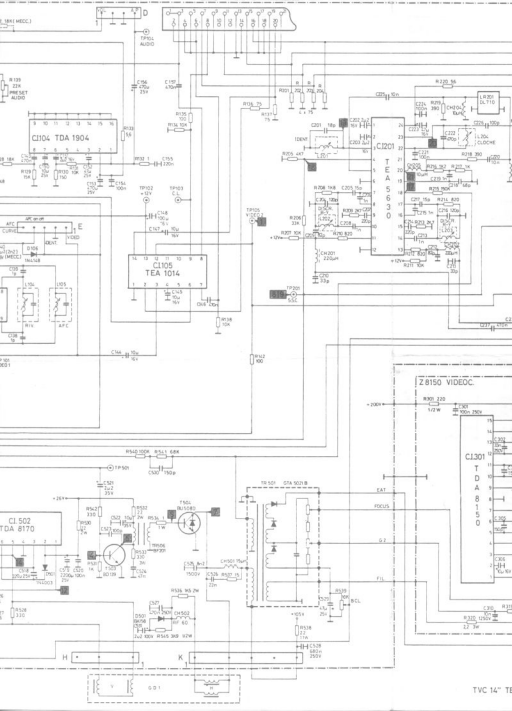
(SOLD MECC.)

TAA 550B

CL704

C1.702
TDA 7812





TDA 4601

4,2V	1
	2
2V	3
	4
6,8V	5
0V	6
	7
	8
12V	9

S L 1430

12V	1	8 0V
5,6V	2	7 0V
5,6V	3	6 0V
0V	4	5 3V

TDA 2542

4,9V	1	16 4,9V
4,9V	2	15 4,9V
0,8V	3	14 4V
3-10V	4	13 0V
8-12V	5	12 1,9V
0-3V	6	11 12V
3,3V	7	10 3,3V
8,2V	8	9 8,2V

TDA 1048

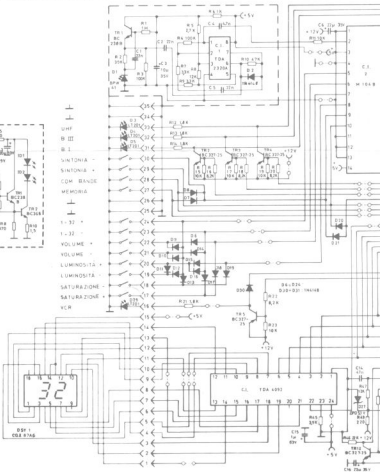
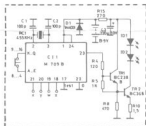
0V	1	16 4,9V
1,9V	2	15 4,9V
1,9V	3	14 4,9V
1,9V	4	13 4,9V
1,9V	5	12 12V
2,7V	6	11 5V
11V	7	10 4,2V
11V	8	9 1,9-1V

TDA 1904

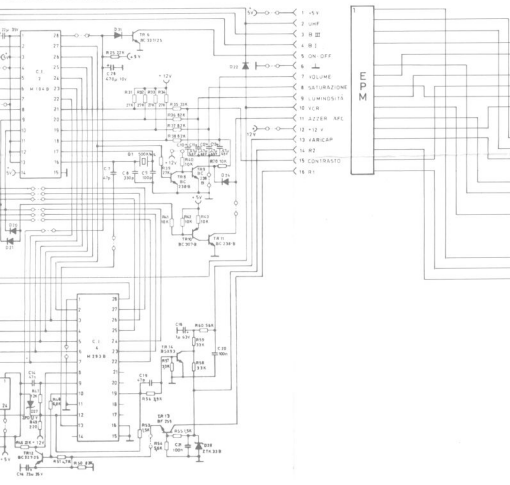
10V	1	16
18V	2	15
18V	3	14
	4	13
	5	12
4V	6	11
4V	7	10
4V	8	9

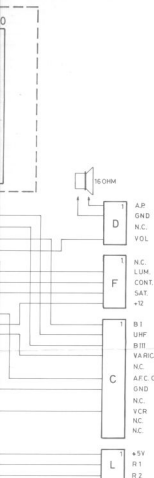
TENSIONI RILEVATE CON VOLTMETRO 20 Kohm/V CON UN SEGNALE DI MONOSCOPIO IN ANTENNA DI 1 mV.

VOLTAGE RILEVATE AVEC UN VTM 20 Kohm/V AVEC UN SIGNAUX DI MIRE EN ANTENNE DE 1 mV.



TEA 1014	TDA 8180	TDA 8170	TDA 5630	TDA 3506	TDA 8150
1 14	2V 24 5V	2V 1	4-5V 1 24 12V	1 28	3V 1
2 13 12V	2V 2 23 27V	2 2	4-4.5V 2 23	2 27 5V	3V 2
3 12	3 22	3	3 22 3V	3 26	12V 3
4 11 0V	4 21 0-12V	4 4	4 21	4 25 12V	4
5 10 10V	5 20	5	5 20	5 24 0V	5
6 9 0-12V 11-25V	6 19 0V	6	6 19	6 23 12V	6
7 8	7 18 3.6V	7 7	7 18	8V 7 22 12V	7
	8 17		8 17	8V 8 21 2V	8V 8
	9 16 5.7V		9 16	8V 9 20 0.8-2.2V	9
	10 15		10 15	10 19	10
	11 14 5.2V		11 14	11 18	11
	12 13		12 13	12 17	200V 12
				13 16 0.3V	12.3V 13
				14 15	3V 14
					3V 15





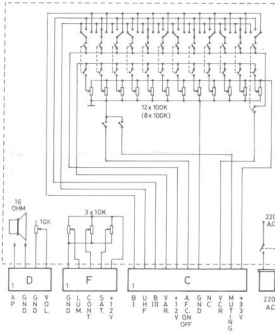
1
A.P.
GND
N.C.
VOL

1
N.C.
LUM.
CONT.
SAT.
+12

1
B1
UHF
BIII
VARICAP
N.C.
A.F.C. ON/OFF
GND
N.C.
VCR
N.C.
N.C.

1
+5V
R1
R2

TEF 85
82/80



10K

3 x 10K

12 x 100K
(8 x 100K)

1
A
P
G
N
D
D

1
G
L
U
M
D
C
O
N
T.
S
A
T.
+
1
2
V

1
B
I
U
H
F
B
I
I
I
V
A
R.
+
1
2
V
A.
F.
C.
O
N
O
F
F
G
N
D
N
C.
V
C
R
M
U
T
I
N
G
+
3
V
+
3
V

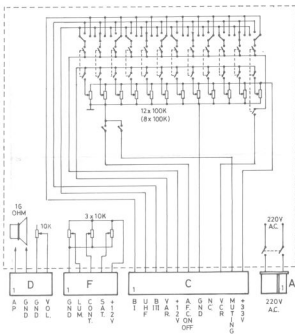
220
AC

220
AC

TEF 85
82/80

TEF 85
82/80

OFF



TEF 85
82/80