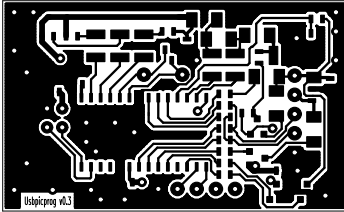


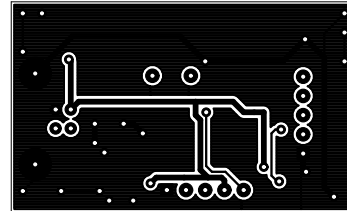
Frans Schreuder
<http://usbpicprog.org>
usbpicprog.org
 File: usbpicprog.sch
 Sheet: /
Title: Usbpicprog
 Size: A4 **Date: 25 feb 2011**
 KiCad E.D.A. **Rev: 0.3.2**
 Id: 1/1

Usbpicprog PCB

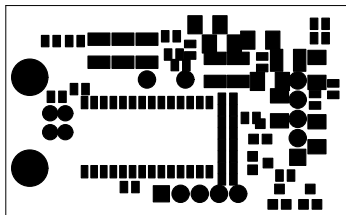
Top layer



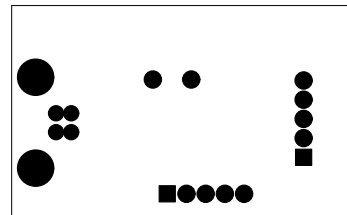
Bottom Layer



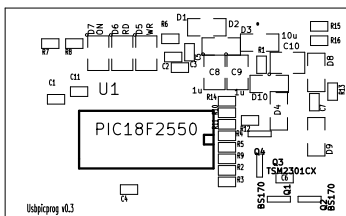
Top copper



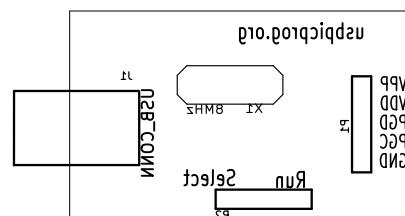
Bottom copper



Top mask

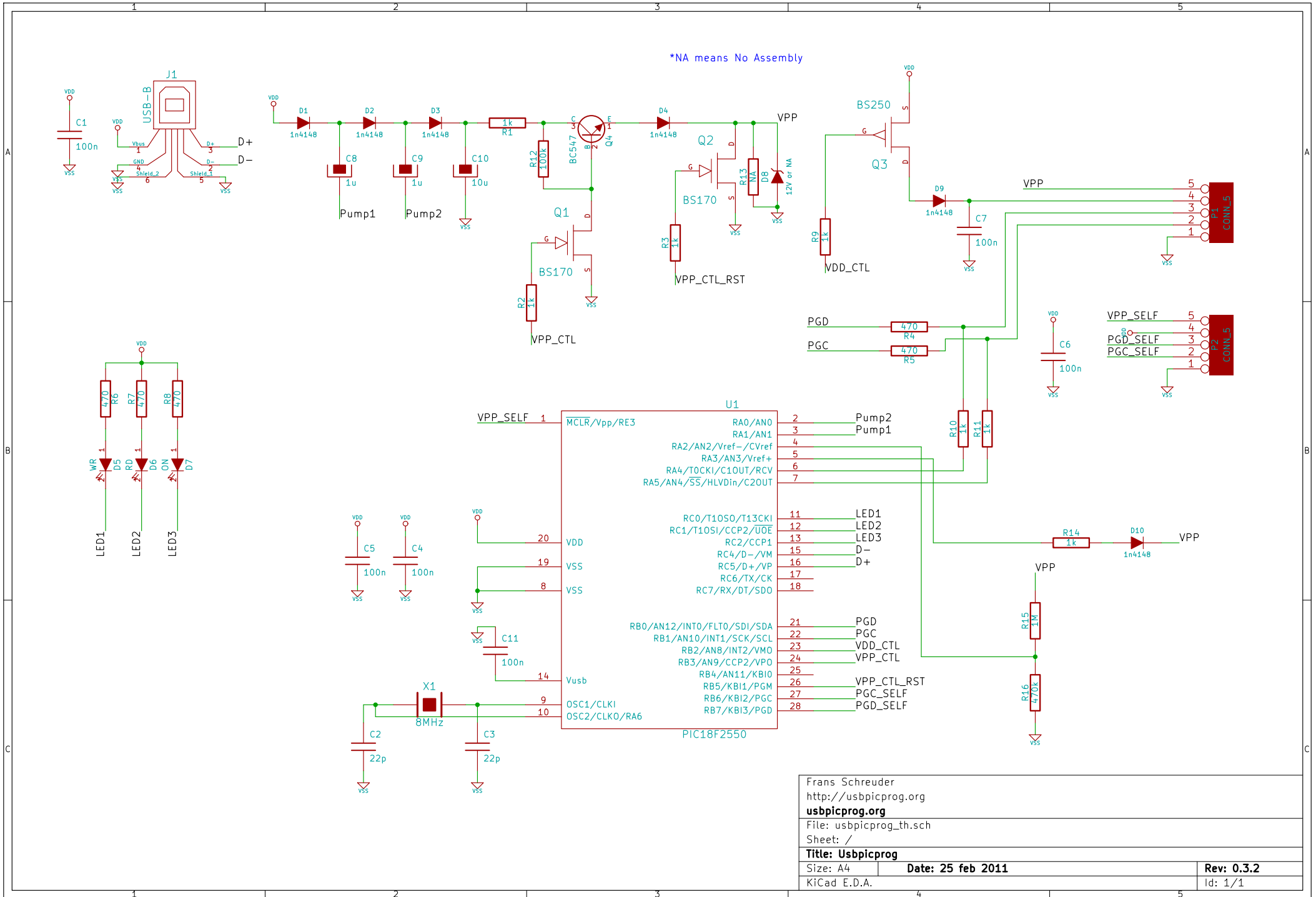


Bottom mask



Top silk

Bottom silk



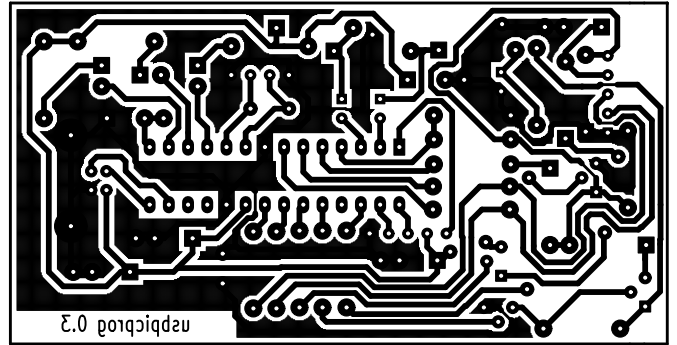
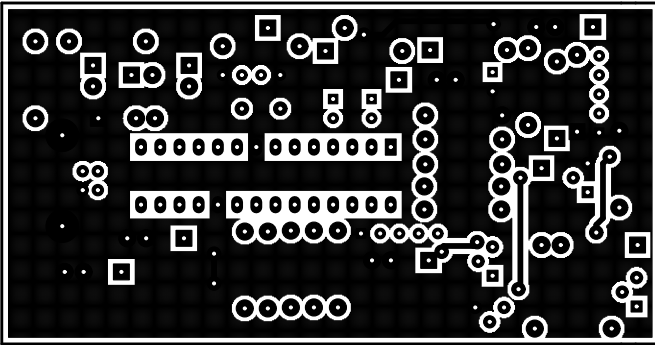
*NA means No Assembly

Frans Schreuder	
http://usbpicprog.org	
usbpicprog.org	
File: usbpicprog_th.sch	
Sheet: /	
Title: Usbpicprog	
Size: A4	Date: 25 feb 2011
KiCad E.D.A.	Rev: 0.3.2
	Id: 1/1

Usbpicprog through hole PCB

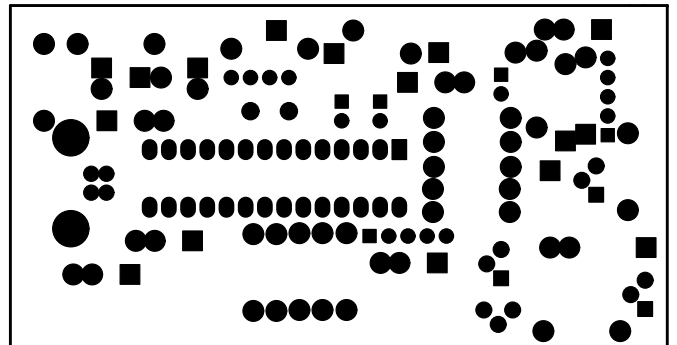
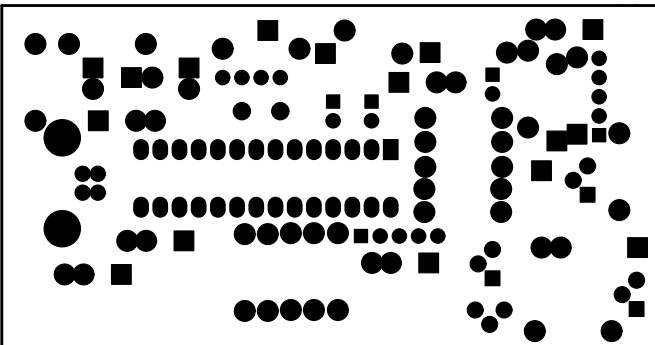
Top layer

Bottom Layer



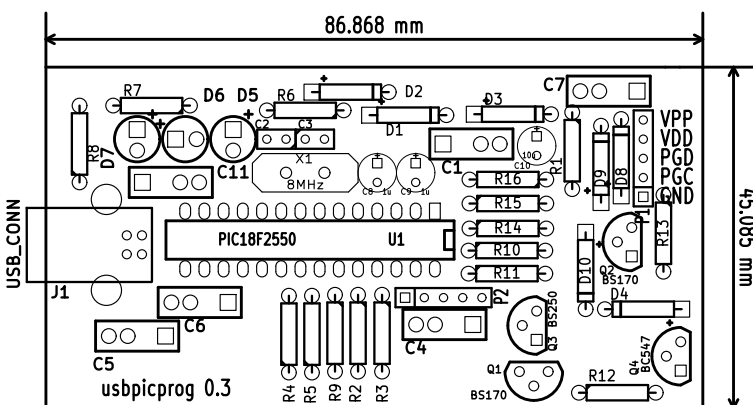
Top copper

Bottom copper



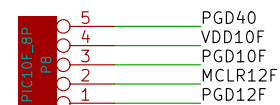
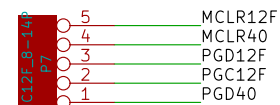
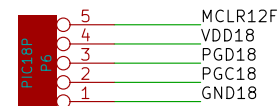
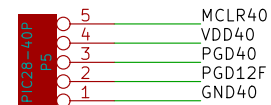
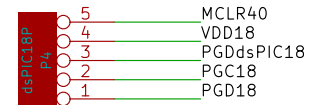
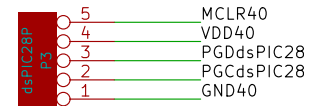
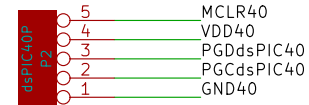
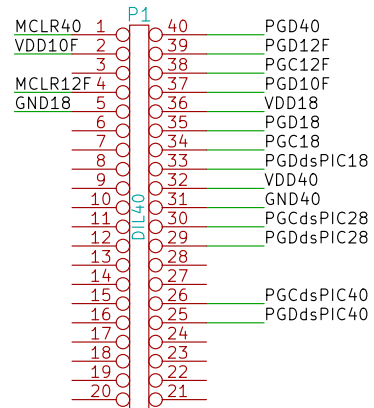
Top mask

Bottom mask



Top silk

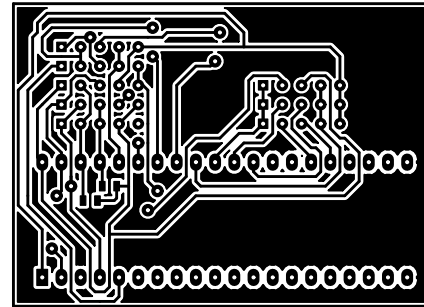
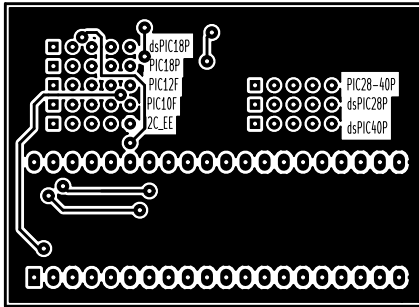
Bottom silk



Usbpicprog ZIF socket PCB

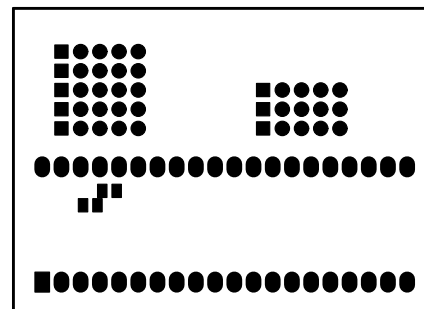
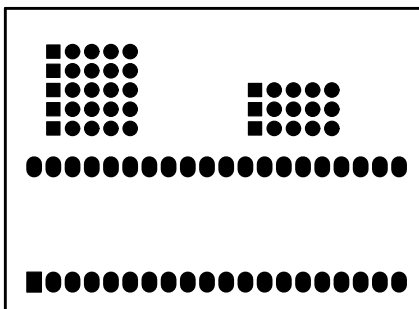
Top layer

Bottom Layer



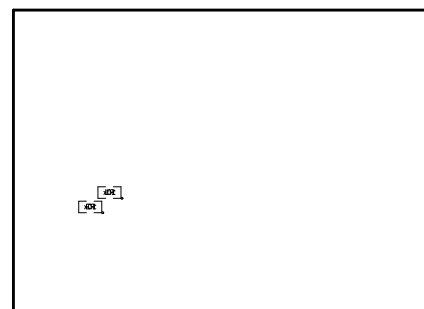
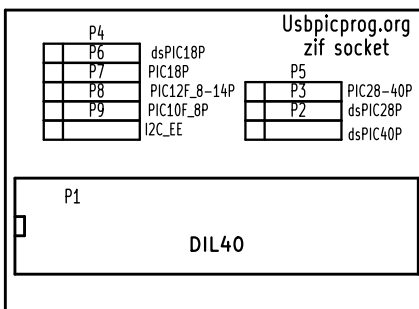
Top copper

Bottom copper



Top mask

Bottom mask



Top silk

Bottom silk