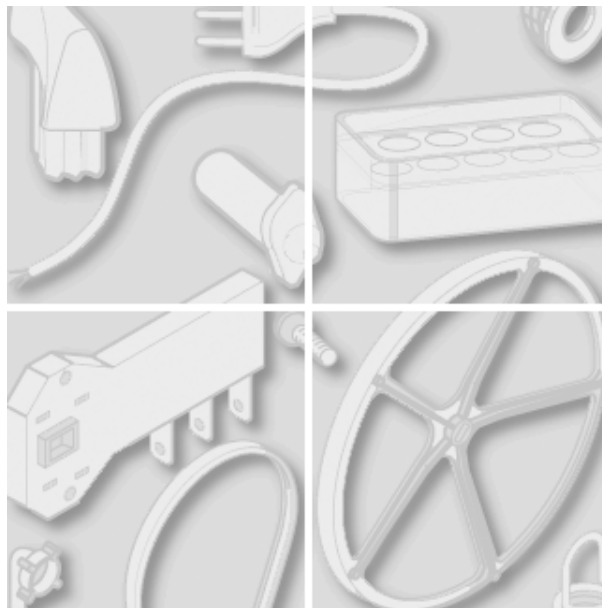


**Indesit** Company



Model type:  
**WT100CSI**

Commercial code:  
**26899**

## General notes

### Technical Documentation guidelines

---

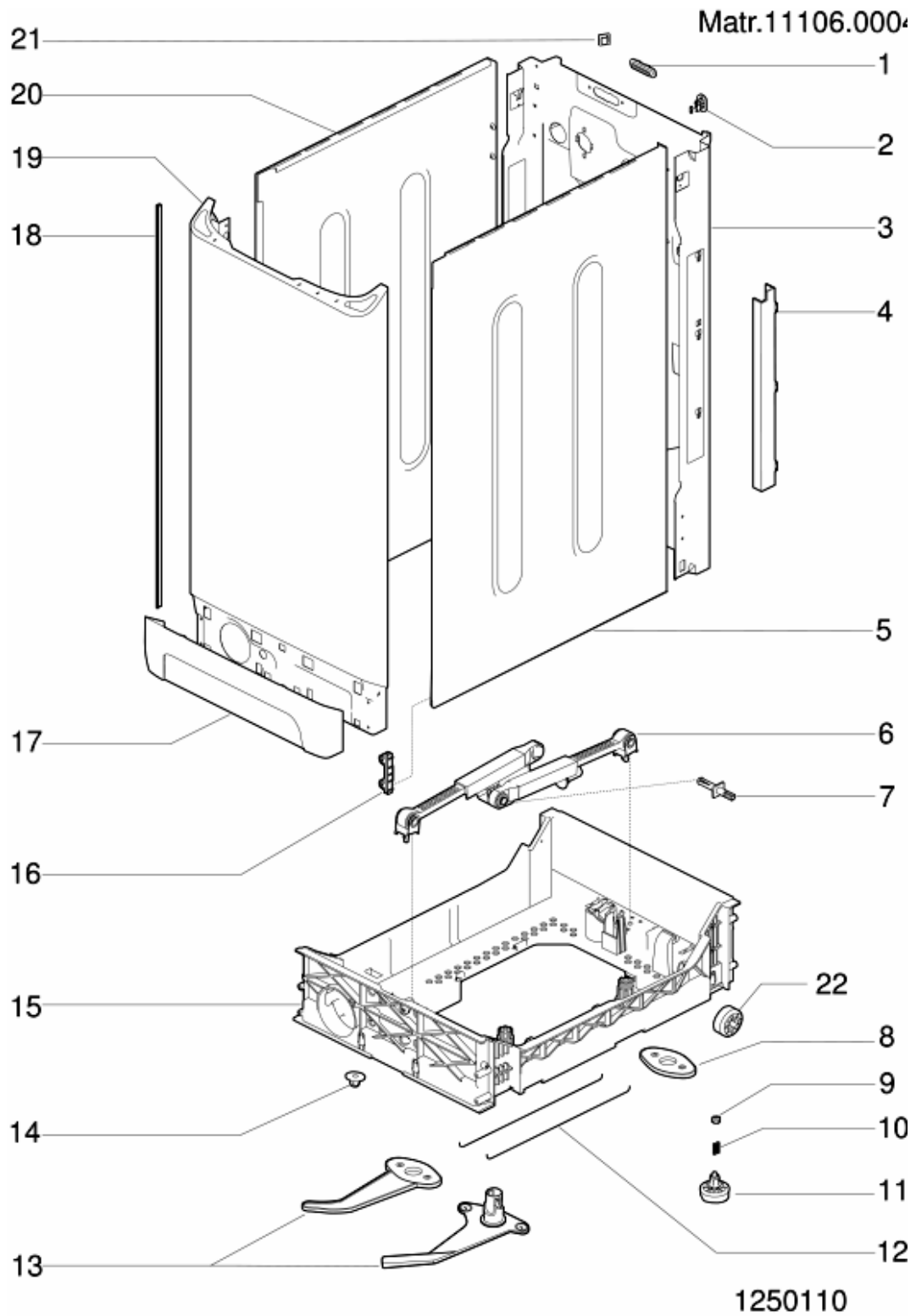
---

You can find herewith some generic information to simplify consulting of technical documentation:

1. Models of same range share the same exploded views, which report the richest set of spare parts: generally, a model does not necessarily have a related spare part for each particular shown on exploded views.
2. Some spare parts can not be represented directly on the exploded views (instruction booklets, specific kit, etc...). You can find those codes in the spare parts list with the same reference of particular where spares are installed or with references 099, 999. Instruction booklets, once managed, appear with 000 reference.
3. On the higher right site of each exploded view there is a serial number which indicates the beginning of the production of certain range: some models might have more than an exploded view for a given category, each distinguished by a different serial no. and linked to another spare parts list, In this case, serial no. is required to supply the right spare part code. Exploded view to be considered is the one with a more recent serial no. but previous than the one of the model that needs assistance.
4. Exploded views might require further updates even after publishing. Addition of new spares will go on following the already existing numeration references. Revision number of an exploded view is shown into last four digits of serial number into upper right hand corner.
5. The spare parts list associated to an exploded view shows related codes of spares managed for a certain model; for each spare part other informations are available:  
  
REF: reference no of spare into a table; SUBSTITUTE: list of spare(s) which can replace a code but that keeps same functional characteristics  
  
INDUSTRIAL CODE: list of variables of a model (shown into model label) where such spare is used; NOTICE: code of information(s) to refer to complete technical intervention, track for changes or to find correct spare part code.
6. Some notices, into a same section are generic therefore cannot be directly linked to a spare part. In order to assist a model in the best way as possible, it is helpful to pay attention to all notices and constantly verify documentation updates
7. Technical documentation cover shows model name and its commercial codes

1250110

Exploded views



1250110

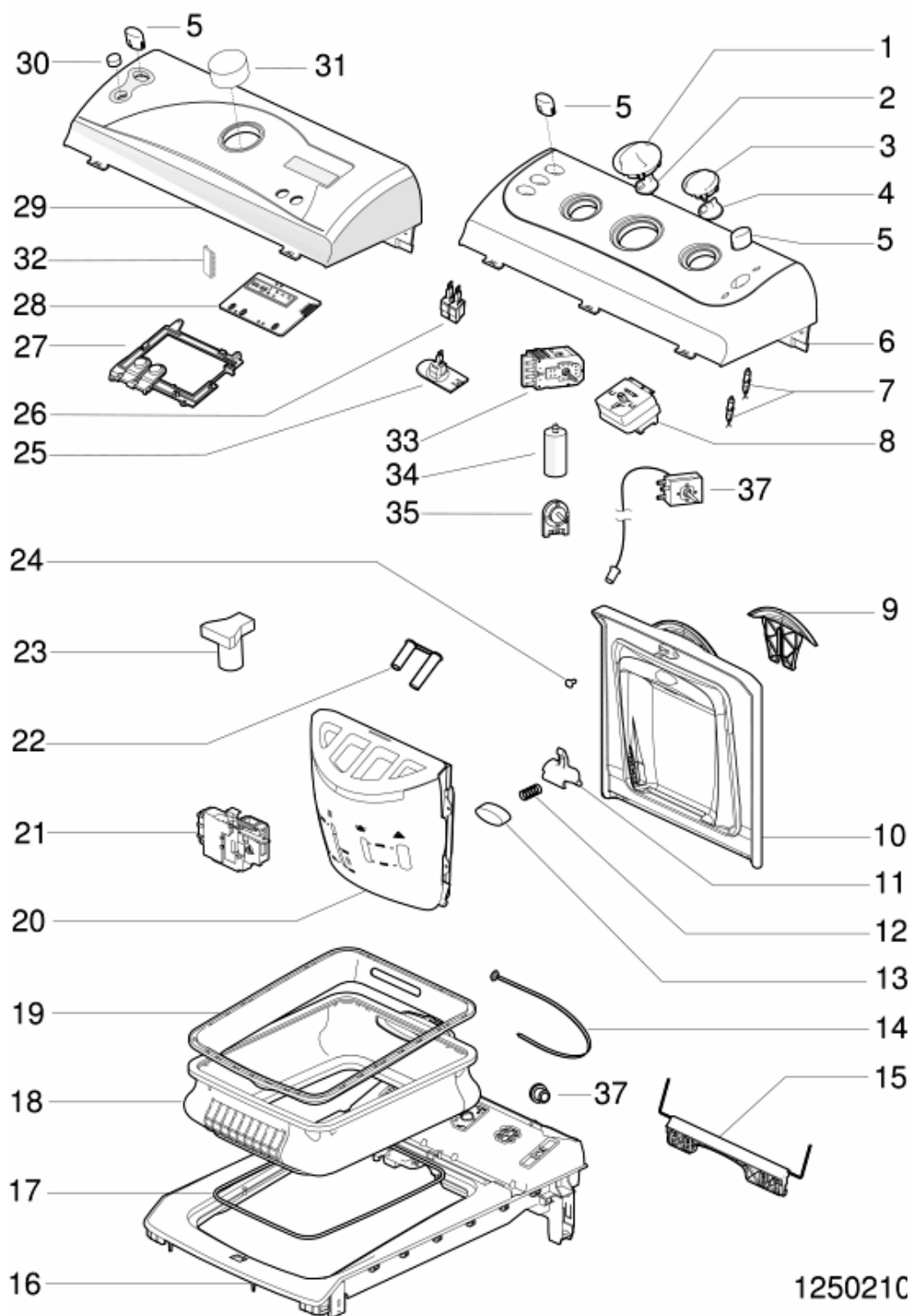
Spare parts list

Ref.	Code	Substitute	Description	Notice	Industrial code
000	C00086332		user instructions booklet rus-cs-hu-de		
001	C00083909		blanking plate-rear(test plug) tl ph2001		
002	C00064205		cord lead		
003	C00083784		brezil back top ph2001	n1040278	
003	C00091893		brezil back top ph2002	n1040288	
003	C00094067		brezil back top ph2003	n1040309	
003	C00098566		brezil back top	n1040309 n1040336	
003	C00112632		brezil back tl evoui	n1040336	
004	C00083901		wire protection		
005	C00083774	1 x C00084913	side panel right top ph2001		
006	C00083787		shock absorber top ph2001		
007	C00055037		plastic expansion rivet		
009	C00083788		nut foot		
010	C00059869		spring for foot d =11 mm h = 21 mm		
011	C00083789		foot top ph2001		
014	C00083786		nut ro-mob m6 d.28 1.5 top ph2001		
015	C00083785	1 x C00093539	moving support top ph2001		
016	C00083780		block side panel cabinet		
017	C00083790		base ph2001 tl		
018	C00065071		side panel trim (90701)		
019	C00085462		front panel top ph2001		
020	C00083776	1 x C00084913	side panel left top ph2001		
021	C00041575		adhesive hook		

1250210

Exploded views

Matr.30519.0001



1250210

1250210

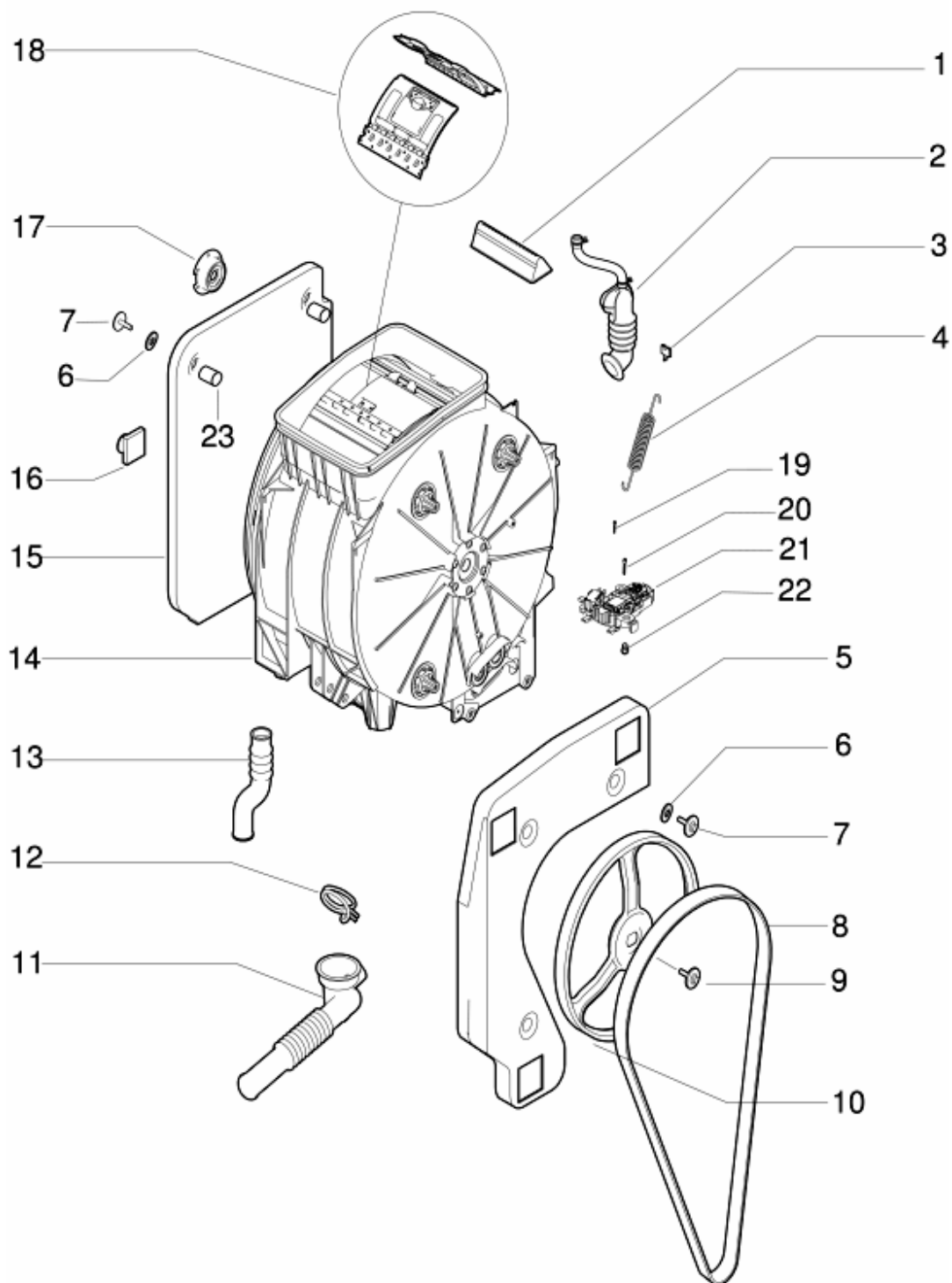
Spare parts list

Ref.	Code	Substitute	Description	Notice	Industrial code
001	C00083801		knob timer tl ph2001		
002	C00083800		support knob timer tl ph2001		
003	C00083802		components knob tl ph2001		
004	C00083804		support knob tl ph2001		
005	C00083803		push-button b27 tl ph2001		
006	C00086331		dashboard wt100csi indesit		
007	C00075456		red pilot lamp indesit	n1040275	
007	C00084763		pilot light red 12 v idc rast 2.5		
007	C00089024		pilot light red 230v ra2,5		
008	C00083916		programme select elbi 1665 rast.2 8 pos.		
009	C00084985		handle cover indesit white		
010	C00085608		cover indesit tl ph2001	N1040346	
011	C00083918		blocking stem dispenser		
012	C00083922		spring dispensertl ph2001		
013	C00084983	1 x C00116868	push-button dispenser white27 ph		
014	C00031331		clamp		
015	C00083923	1 x C00087073	spring support		
016	C00085468		lower cover tl ph2001	N1040346	
017	C00057933		bellows clamp (tank front)		
018	C00085611	1 x C00111495	faltenbalg / manschette	N1040346 n1040330	
019	C00083924	1 x C00116866	white27 protection diaphragm tl ph2001		
020	C00084343	1 x C00116869	dispenser white27 tl ph2001		
021	C00085610		door interlock	n1040332	
021	C00111494		door interlock tl evonii	n1040332	
022	C00084359		cover siphon tl ph2001		
024	C00083893		screw4x12 tc-t15 tl ph2001		
026	C00063971		push button switch (unipolar) on-off		
026	C00075445		push button switch na	n1040229 n1040275	
026	C00083904	1 x C00058465	push button switch bip. na tl ph2001	n1040275	
026	C00088394		push button switch na idc		
034	C00082331		radio interference suppressor		
035	C00083905	1 x C00085195	potentiometer 8 pos. idc		

1250310

Exploded views

Matr.01116.000



1250310

1250310

Spare parts list

Ref.	Code	Substitute	Description	Notice	Industrial code
001	C00051504		face		
001	C00051510	1 x C00083894	face whit weight	n1040222	
002	C00085471		steam exhaust hose ass.	n1040336	
002	C00112602		steam exhaust hose tl evonii	n1040336	
003	C00065320		anchorage pad - suspension spring		
004	C00083798		suspension spring - tank tl ph2001	n1040217	
004	C00085463		front suspension spring - tank tl ph2001		
005	C00083794		counterweight dx tl ph2001		
006	C00041605		conic washer		
007	C00083797		screw sw. 8x27 tc-t30		
008	C00083910		belt pvel 1213h8 tl ph2001		
009	C00065076	1 x C00064786	torx bolt - drum pulley fixing (90701)		
010	C00083912		drum pulley d280 tl ph2001		
011	C00083898		tub-filter hose	n1040332	
011	C00111502		hose tank to filter oko tl evonii	n1040332	
012	C00074054		binding		
013	C00055328		detergent recovery hose	n1040332	
014	C00083805	1 x C00110148 1 x C00110152	plastic tank 'tl 600/1000'	n1040324	
014	C00110152	1 x C00111409 1 x C00111505	plastic tank 600/1000 tl2004	n1040324 n1040332 n1040340	
014	C00111505		plastic tank 600/1000 tl evonii	n1040332	
015	C00083896		counterweight sx tl ph2001		
016	C00055303		insulation panel		
017	C00055317	1 x C00087966	support		
018	C00080691		kit boltz and nutz tl	n1040245	
018	C00083895		load orifice 'top loading'	n1040245 n1040344	
018	C00112743		load orifice soft 'tl evonii'	n1040245 n1040344	
099	C00064550		dain hose holder		
099	C00065871		blanking plug		
099	C00081629		desc_ric_c00081629		
099	C00085574		kit package	n1040278	



1250310

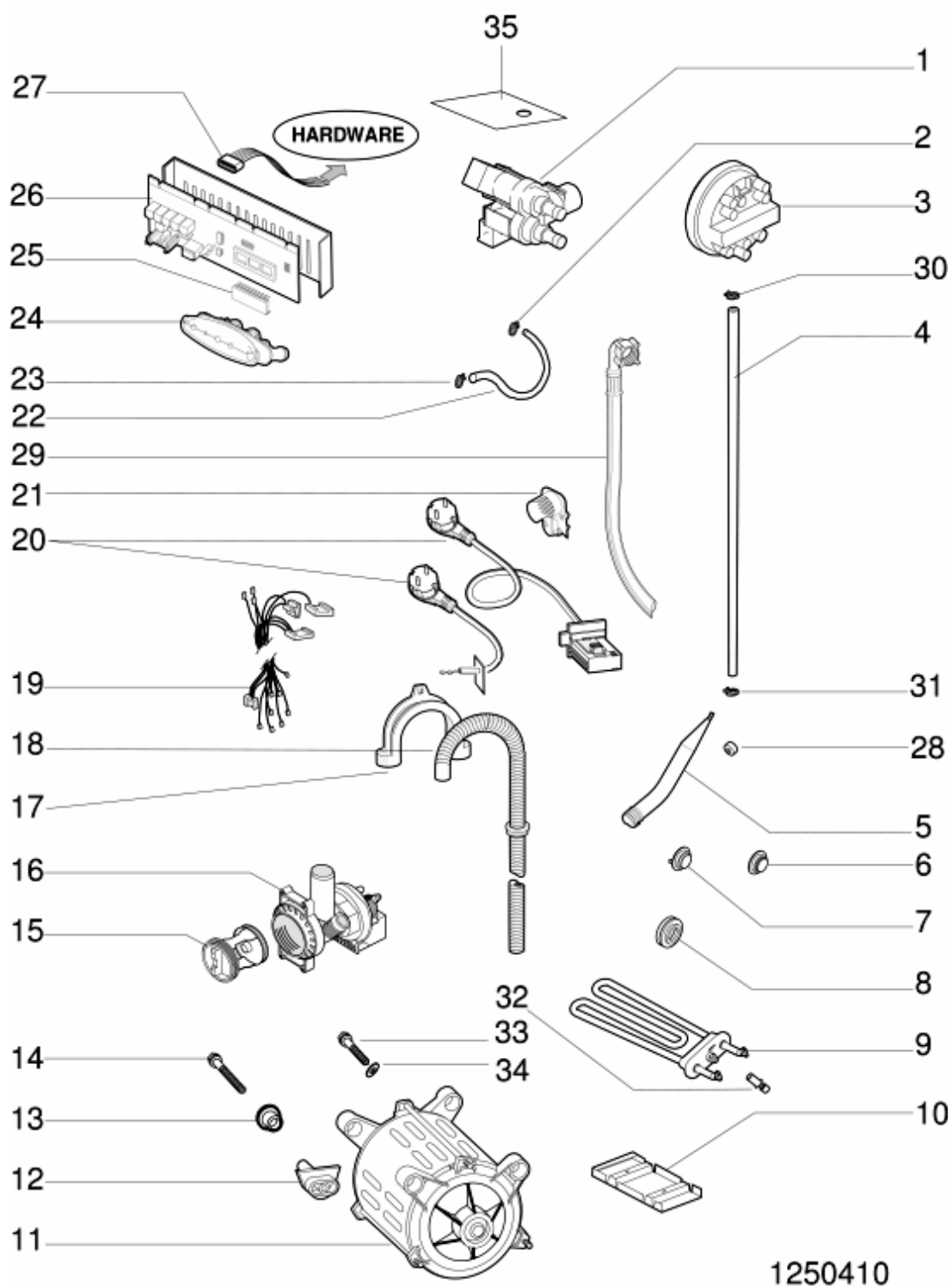
Spare parts list

Ref.	Code	Substitute	Description	Notice	Industrial code
099	C00091902		kit package tl ph2002		

1250410

Exploded views

Matr. 40408.0001



1250410

1250410

Spare parts list

Ref.	Code	Substitute	Description	Notice	Industrial code
001	C00083940		electrovalve 2 way 1e-2u elbi	n1040301 n1040309	
001	C00096350	1 x C00116159	electrovalve 1e2u p.2.5	n1040301 n1040309 n1040321	
002	C00061959		binding		
003	C00083903		pressure switch 1+1 liv. tl ph2001	n1040332	
003	C00111493		pressure switch 1+1 liv. tl evonii	n1040332	
004	C00083897		pipe pressostat tl ph2001		
005	C00051555		air trap	n1040332	
005	C00092173		air trap x oko	n1040332	
006	C00065412		blank grommet - thermostat		
007	C00083915		temperature sensor ntc elth tl ph2001		
008	C00036072		thermostat gasket		
009	C00083906		heater 1750w-230v tl ph2001	n1040324	
009	C00110148		heater 1700w-230v tl	n1040324	
010	C00055322		deflector	n1040324	
011	C00098677		motor collet.ceset p30 tl		
011	C00116645		brush motor ceset 6170 95490		
012	C00083911		fixing nut		
013	C00083914		motor rubber bush		
014	C00084333		screw m8x35 tc-t30		
015	C00045027		filter element kit		
016	C00083942		self cleaning pump	n1040332	
016	C00111409		self cleaning pump tl evonii	n1040332	
017	C00036145	1 x C00019902	plastic support for drain hose		
018	C00051563		drain hose - to sink		
019	C00083900	1 x C00091648	wiring 3m+4t+1l	n1040275	
019	C00091648		wiring 3m+4t+1l	n1040288 n1040301	
019	C00096434		wiring 3m+4t+1l	n1040301 n1040332	
019	C00111538		wiring 3m+4t+2l tl	n1040332	
020	C00083907		supply cable 3x1,0 l=1500 tl ph2001	n1040288	
020	C00091633		supply cable 3x1 schuko 1,5 m + r.i.s.		

1250410

Spare parts list

Ref.	Code	Substitute	Description	Notice	Industrial code
021	C00083944		grate steam exhaust hose	n1040336	
022	C00083939	1 x C00093620	tubing valve distributing	n1040309	
022	C00087068	1 x C00093621	tubing valve distributing	n1040309	
022	C00097841		tubing valve distributing l=145	n1040309	
023	C00054734		binding		
024	C00083941		distribution assembly		
025	C00086326		eprom wt100csi software 28268990030	n1040061 n1040078	
026	C00083908	1 x C00084838	module (less eeprom) tl ph2001	n1040061 n1040078 n1040321	
027	C00066292		insulated tweezers		
027	C00084566	1 x C00095669	housing seriale lb2000-pc top loading		
027	C00084943	1 x C00099862	serial cable lb2000 - pc	n1040211 n1040317	
028	C00078221		tubetto spugn.40x5x30		
029	C00051556	1 x C00003070 1 x C00005572	mains inlet hose hot		
030	C00051541		binding		
031	C00061958		binding d=32,7		
035	C00109798	1 x C00116161	protection electrovalve tl	n1040321	

## Notices

N1040346: Elimination of leakage between upper top and cover on TL.

---

This modification is applied only after having checked for the absence of distortion or breakage of the components that jointly ensure a watertight seal (cover, top, diaphragm, etc.).

The modification consists in raising the diaphragm to obtain greater interference between diaphragm and cover inner panel.

### PROCEDURE:

Remove the nine screws located under the diaphragm, remove the plastic protection, and raise the diaphragm, positioning it inside the loading port.

After drying the supporting surface apply a strip of approximately 1.2 mm of adhesive expanded rubber, replacement P/N 066834 which has been previously prepared by cutting it in half lengthwise.

n1040061: Trouble-shooting.

---

Intervention procedure on 2000 washing machines

### 1. Reading the error code

The fault on the appliance is signalled via:

1. the continuous rotation of the selector knob
2. the action, for the first 4', of the electrovalve and the drain pump
3. the door becomes unlocked
4. the led flashes:

the number of flashes indicates the fault code; the code should be read as follows:

- each fast flash (2/3 flashes of the led very close together) represents one code value
- the fault code is evaluated by counting the number of flashes occurring at 3/4" intervals from one another
- stop counting when the washing machine waits the equivalent of approximately 8/9" between flashes
- the procedure is repeated by the appliance cyclically

E.g.: F03



(FIGURE NT 00)

## 2. Autotest

Should the washing machine not be signalling an error, you can check it using a serial key and using a particular autotest cycle, which is to be activated as follows:

1. bring the washing machine to reset position (coloured ball) for at least 5" and wait until the led flashes on reset mode
2. insert the hardware key into the serial outlet
3. position the switch situated on the key in TEST position
4. wait for the door to lock and for the selector to start turning
5. position the switch situated on the key in PC position

the appliance will carry out the following cycle:

- selector moves on up to position 0 (12h if the appliance has a delay, programme 1 if it has no delay)
- loads the wash electrovalve for approx. 10"
- loads the pre-wash electrovalve for approx. 10"
- loads the wash electrovalve and pre-wash electrovalve at the same time until the pressure switch is on full
- heats up to 30° and moves the motor in both directions
- selector moves on for 9 notches
- drains and spins
- the selector knob stops on one of the reset positions
- STOP

The test cycle can be repeated as many times as you wish following the same procedures

The test cycle can be interrupted by positioning the selector knob on one of the reset positions.

## 3. Intervention in the event of a Fault

In the event of a fault, the procedure to go by is as follows:

F01: Triac Short circuit  
Overhaul CNE

Replace Card

F02: Blocked Motor, Short-circuited/Open Tachometry

Overhaul CNE

Overhaul Motor connector

Control CNE Continuity/Motor Connector

Control Motor Windings

Control Tachometry Windings

Replace Card

F03: Open/Short-Circuited NTC Found

Overhaul CNA

Control NTC Wiring

Control CNA/NTC Wiring Continuity

Replace NTC

Replace Card

F04: Overflow and Pressure Switch Empty found at the same time (Pressure Switch stuck on Empty)

Overhaul CN1

Overhaul Pressure Switch Contacts

Control CN1/Pressure Switch Continuity

Replace Pressure Switch

Replace Card

F05: Blocked Pump or Pressure Switch stuck on Empty Found

Overhaul CNF (pump connector)

Overhaul Pump Connector

Control Pump Filter

Control Pump Windings

Change Pump

Replace Card

F06: Selector Error (a part no. cannot be found)

Overhaul CND (selector connector)

Overhaul Selector Connector

Control Selector/CND Continuity

Control Selector Motor

Replace Selector

Replace Card

F07: Resistance Relay Stuck

Overhaul CN1

Overhaul CN1

Overhaul Resistance Connection

Replace Card

Overhaul Resistance Connection

Replace Card

F08: Resistance Missing or Pressure Switch stuck on Full Found

Overhaul CN1

Overhaul Resistance Connection

Overhaul Pressure Switch Connection

Replace Resistance

Replace Pressure Switch

Replace Card

F09: Machine Setup Error Found

Control Microprocessor Version

Ask for EEPROM Spare Part indicating Microprocessor version

F10: Pressure Switch Empty and Full or neither Empty nor Full Pressure Switch Found

Overhaul CN1

Overhaul Pressure Switch Wiring

Control CN1/Pressure Switch Continuity

Replace Pressure Switch

Replace Card

F11: Pump Feedback Missing

Overhaul CN1

Overhaul CNF

Overhaul Pump Connector

Overhaul Pressure Switch Connector

Control Pump Windings

Replace Pump

Replace Card

F12 SPECIFIC FOR LVB2000 INDESIT EVOLUTION / DIALOGIC.

F12: Lack of Display card-Main Card Communication

1. Check the effectiveness of contacts on CNC Connector Card
2. Overhaul 8-way connector on Display card
3. Check continuity of CNC-CN 8 way connector
4. Replace Main Card
5. Replace Display Card

F13: NTC wiring harness disconnected from the dryer system

1. Check the efficiency of the terminals on the CNA connector board
2. Check NTC wiring harness
3. Check the wiring harness continuity of the CNA / NTC connectors
4. Replace NTC
5. Replace terminal board

F14: Dryer connector open or not connected

1. Check the efficiency of the terminals on the CNI connector board
2. Overhaul CN1
3. Overhaul connector connection
4. Replace the board.Merloni Elettrodomestici

F15: Dryer connector is always active

1. Check the efficiency of the terminals on the CNI connector board
2. Overhaul connector connection
3. Overhaul the pressure sensor connection
4. Replace the connector
5. Replace pressure sensor
6. Replace the board

F16: Non-functioning basket block

1. Go over connector card CNC
2. Go over connector basket block
3. Control Continuity of cabling CNC / basket block and basket block supply
4. Replace basket block
5. Replace card

N.B.From Fault F01 to fault F11



These are shown by LEDs in stand by/on in LVB2000 machines Ariston/Indesit.

From fault F01 to fault F12

These are shown in a display located on the instrument panel of LVB2000 machines Evolution Indesit.

From fault F01 to fault F15

Are those that are indicated according to the version via LED stand by/on or display positioned on the Wash Dry machine Ariston/Indesit panel.

#### 4. Replacing the card

Should you have to replace the card:

- retrieve the EEPROM from the old card
- reassemble the EEPROM onto the new replacement card (without EEPROM)

In the event, and only in this case:

- an F02 has been detected
- the above-mentioned checks have been carried out and no problems have been detected on the wiring or to the motor
- the card fitted onto the washing machine is a 12 or 20 version (the version is indicated by a label on the module-containing box with SW20 or SW12)

you should:

- fit on a new card (version 32 or above)
- fit on an updated EEPROM to request from the assistance service centre, stating the code (e.g. 80xxxxx0000 or 46xxxxx0000), the serial number and the washing machine model.

#### n1040078: WARNING: Remove the eeprom

---

Remove the eeprom with pliers part no. 066292 from the faulty module and insert it on the new module / display module, otherwise the machine will not function.

L'EPROM contains the software that characterizes the model, therefore each apparatus should have his own specific eeprom(see the list spare parts).

#### n1040211: Serial cable to connect the hardware key with the PC.

---

To connect the hardware key: LB2000 with the personal computer, you must use a serial cable, pin to pin 9 pin F/F, to guarantee the availability, it was decided to manage it as a spare part.

The SAT code of the cable (length 2m) is 084943.

#### n1040217: Introduction of new front springs for tank suspension

---

From the register number 110120001 new front springs for tank suspension code 085463 are introduced on washing-machines with top loading, produced in the plant of Brembate, for needs of production.  
The two back springs are the pre-modified ones (cod. 083798).

#### n1040222: Introduced new clothes dragger with Brembate top loader weight

---

From the 201100001 registration number on the Washing machines loaded from the top produced in the Brembate establishment (Top Loader 2001), a new clothes dragger has been introduced with the weight code 083894.  
The new particular can be mounted replacing the premodify (051510), but not vice versa. The premodify dragger will continue being regularly managed from exchange warehouse as it is employed in other productions.

#### n1040245: Brembate washing machine basket doors re

---

For all washing machine models produced in the Brembate factory and relevant to this note, in replacing the loading mouth code 083895/112743 proceed as follows:

- remove the 18 rivets (9 on the right, 9 on the left) hooking the two doors to the loading mouth on the machine;
- take replacement part 083895/112743 and carry out the same operation described in the previous point;
- hook the two new doors and the new loading mouth on the basket of the machine using the nut and bolts kit code 080691 (formed of 18 screws + 18 washers + 18 nuts);
- use silicone (SAT code 081629) for hooking the loading mouth on the basket.

#### n1040275: Modification of lamp-switches on TOP washing machines

---

From serial no. 20916.0001 the wiring assembly has been modified on top-load washing machines produced in the Brembate factory, due to introduction of the following parts:

- 1)SINGLE-POLE 063971 in place of TWO-POLE 083904;
- 2)NA IDC 088394 in place of NA 075445;
- 3)INDICATOR LAMP IDC 089024 in place of INDICATOR LAMP 075456.

Wiring assemblies:

- Old 083900 - new 091648
- Old 085543 - new 091649
- Old 090926 - new 091650

The machines fitted with the wiring assemblies listed below only have a switch modification because they are not fitted with the indicator lamp.

Wiring assemblies:

Old 084880 - new 091651

Old 087118 - new 091652

Old 087915 - new 091653

Old 088303 - new 091654

The modification also involved the wiring diagram and the wiring layout; the new layouts are differentiated from the old ones by means of the start of validity date: 16/09/02.

The new wiring assemblies can also be fitted on premodification machines, therefore the old ones will be managed until stocks run out.

### n1040278: New packing kit on Brembate TOP washing machines

---

From serial no. 21022.0001, a new packing kit Sat code 091902 (in place of Sat code 085574) and a new rear panel Sat code 091893 (in place of Sat code 083784) have been introduced on top-load washing machines produced in the Brembate factory. This modification has introduced the packing hole cover Sat code 065871 and the drain tube support code 064550.

### n1040288: Power supply cable + moulded filter on top-load Brembate WMs

---

From serial number 30224.0001, all top-load washing machines produced in the Brembate factory have been equipped with a new power supply cable with moulded filter and new rear panels with a specific opening for fixing the new cable.

The new power supply cables are:

Sat code 091632 Power supply cable 3x1 schuko 1.5m+capacitance filter;

Sat code 091633 Power supply cable 3x1 schuko 1.5m+inductive filter;

Sat code 091641 Power supply cable l=2550mm ag +capacitance filter;

Sat code 091635 Power supply cable uk 3x1 l=1950mm+capacitance filter;

Sat code 091634 Power supply cable uk 3x1 l= 1950mm + inductive filter;

Sat code 091689 Power supply cable l=2550mm ag +inductive filter.

The new rear panels are:

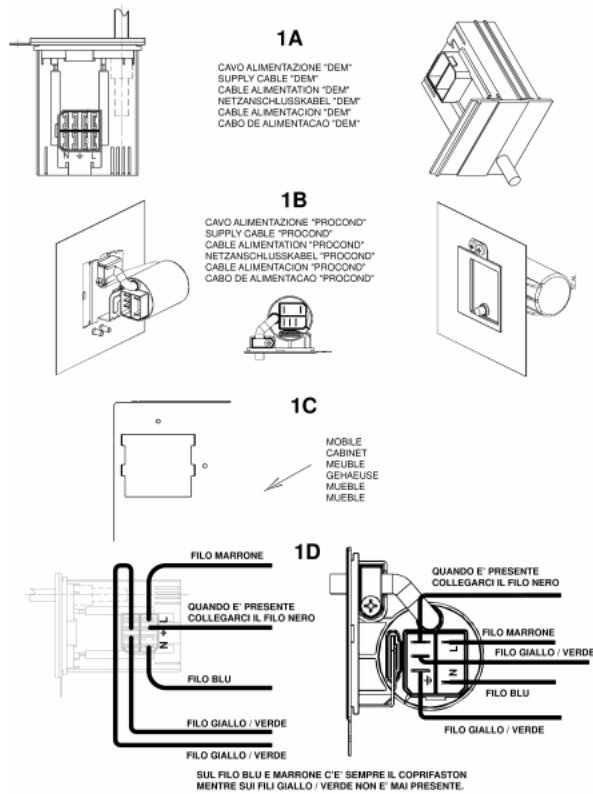
Sat code 094067 - premodification Sat code 091893 (used for few months in place of code 083784, see N1040278);

Sat code 094068 - premodification Sat code 093623 (specific for the Hotpoint WMTL80UK model, commercial code 28749).

To use premodified wirings on modified products perform the connection to the terminal block of the new cable as shown in fig. 1 - 1D.

The wiring diagrams indicated in the Documentation remain the same.

FIG. 1



## n1040301: Modification of solenoid valves and wiring on Brembate TOP LOAD washing machines

From serial number 30609.0001, the top-load washing machines affected by this note have been equipped with the solenoid valve with coil rast 2.5 Sat code 096350 in place of 083940.

This modification does not affect model WMTL80UK commercial code 28749, which has been equipped with solenoid valves Sat code 096350 (1E2U) and 096349 (1E1U) in place of 083940 (1E2U) and 093546 (1E1U).

The wiring harnesses have been modified therefore both the premodification and new ones will be managed; the wiring diagrams are unchanged.

The Sat codes are given below:

Sat code new 096426 premodification 087487;  
Sat code new 096427 premodification 087703;  
Sat code new 096428 premodification 088098;  
Sat code new 096429 premodification 088127;  
Sat code new 096431 premodification 088292;  
Sat code new 096432 premodification 090240;  
Sat code new 096433 premodification 088027;  
Sat code new 096434 premodification 091648;  
Sat code new 096436 premodification 091651;  
Sat code new 096437 premodification 091649;  
Sat code new 096438 premodification 091652;  
Sat code new 096440 premodification 091653;  
Sat code new 096452 premodification 093540;  
Sat code new 096441 premodification 090610;  
Sat code new 096451 premodification 087928;  
Sat code new 096444 premodification 091650;  
Sat code new 096445 premodification 091654.

The models affected by this modification are:

mod.WT100CSI

26376 WT60FR  
26867 WT62EX  
26377 WT62TFR  
26450 WT6IT  
26454 WT5IT  
26451 WT4IT  
26894 WT52CSI  
26865 WT40EX  
26866 WT50EX  
28672 WT124FR  
28075 WT120EX  
26868 WT82EXP  
26379 WT82TFR  
26452 WAT6IT  
26453 WAT8IT  
27872 W4608TLCSI  
26899 WT100CSI  
26869 WT102EXP  
27728 WT102TFR  
28670 WT92FR  
28671 WT112FR  
28314 WAT10IT  
27873 W4610TLCSI  
28669 WT80FR  
26897 WT80CSI  
26970 WT67EU  
27143 AT82IT  
28491 AT125FR  
29395 AT110FR  
27122 AT85FR  
29388 AT95FR  
29182 AT109FR  
27142 AT62IT  
28749 WMTL80UK  
29393 ATD102FR  
27148 ATD120EX  
27125 ATD120FR  
29394 ATD122FR  
27636 ATD104EX  
27145 ATD104IT  
27144 ATD84IT  
26898 WT90CSI  
27635 AT84EX  
28074 AT104EX  
27726 AT84EO  
27684 AT84AG

The wiring diagrams are unchanged.

n1040309: Modification of rear panels on TOP LOADING washing machines.

---

From serial no. 30912.0001, the system used for fixing the loading solenoid valve (spare part code 096350) to the rear panel has been modified on Top Loading washing machines, rotating its position by 90°.

The solenoid valve (spare part code 096350) has been modified with the 45° rotation of a coil; the Replacements Warehouse will continue to manage this part with the same code. When replacing on premodification machines, fit the coils as shown in figure N1040309FIG3-1 and on modified machines, as shown in figure N1040309FIG3-2; to rotate the coil, lift it using a screwdriver and then refit according to the inserts on the plastic.

Replacement codes of the parts affected by this modification (see figure N1040309FIG1):

#### FIG1 A - PREMODIFICATION STRUCTURE

solenoid valve tube/distributor assembly: premodification 083939;

solenoid valve tube/distributor assembly: premodification 087068;

rear panel: premodification 094067.

#### FIG1 B - NEW STRUCTURE

solenoid valve tube/distributor assembly: new 097841;

solenoid valve tube/distributor assembly: new 097841;

rear panel: new 098566.

Replacement codes of the parts affected by the modification to WMTL80UK (see figure N1040309FIG2):

#### FIG2 A - PREMODIFICATION STRUCTURE

solenoid valve tube/distributor assembly: premodification 093620;

solenoid valve tube/distributor assembly: premodification 093621;

rear panel: premodification 094068.

#### FIG2 B - NEW STRUCTURE

solenoid valve tube/distributor assembly: new 097832;

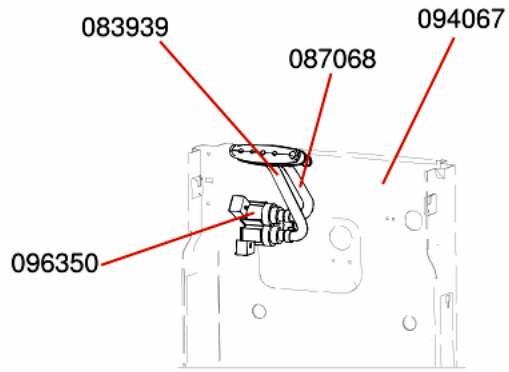
solenoid valve tube/distributor assembly: new 097832;

rear panel: new 098567.

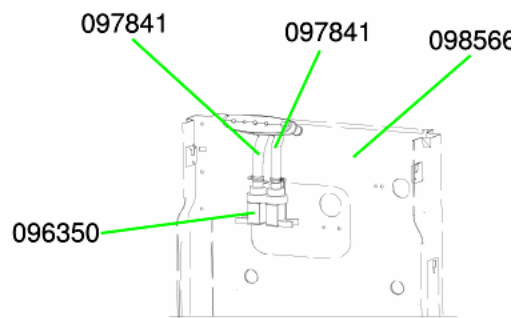
Premodification panels will be managed by the Replacements Warehouse while stocks last; when replacing with new ones on premodification appliances the new tubes must also be used.

When using the new panels on appliances before serial no. 30609.0001, fitted with solenoid valve code 083940, rotate the coil 45° and follow the instructions given above for code 096350, paying attention during the wiring phase to keep the cables away from the bowl support spring.

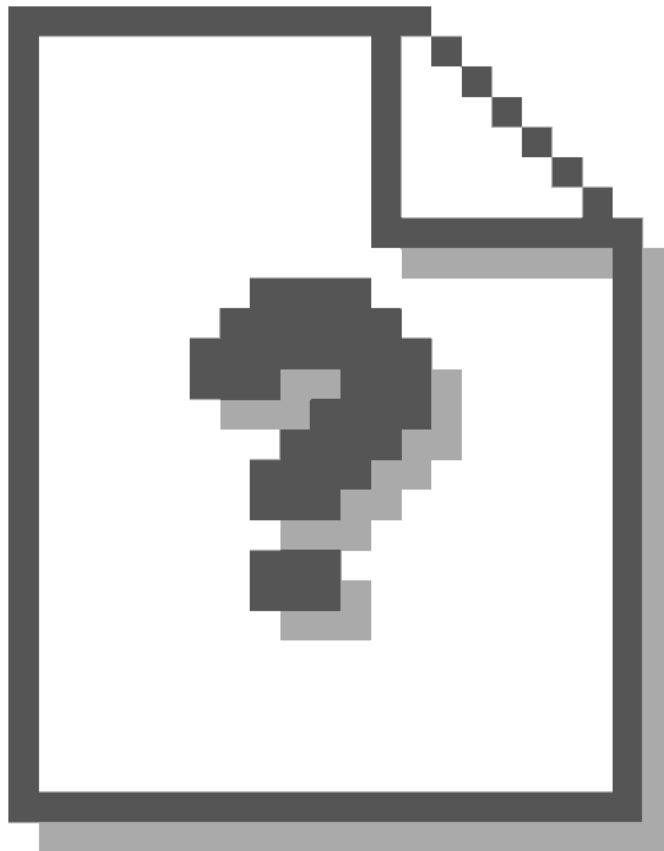
N1040309FIG1

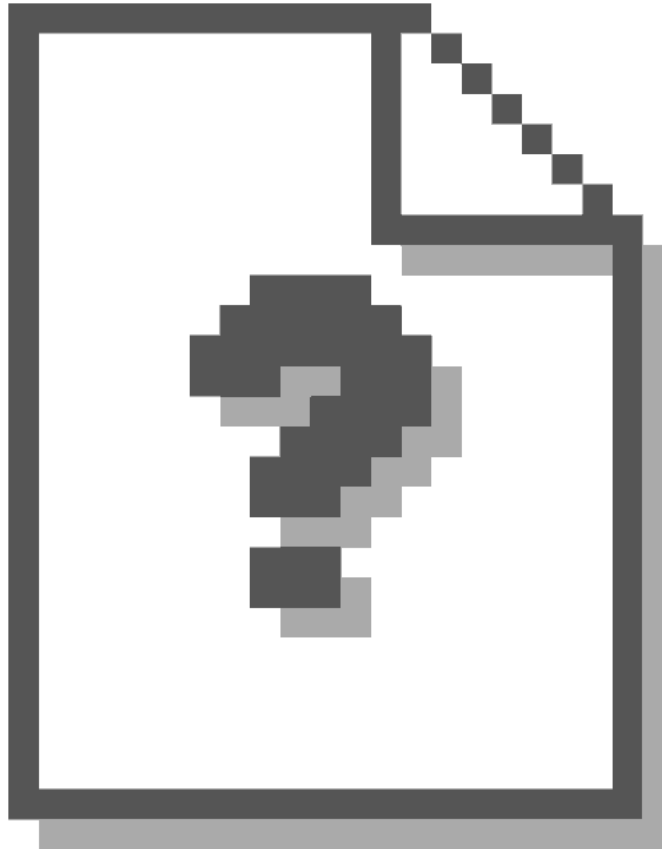


**FIG1 A**



**FIG1 B**





n1040321: Plastic protection for solenoid valve.

---

All top-load washing machines produced from September 2003 to February 2004 (from serial no. 30900.0000 to 40300.0000) have been equipped with a plastic protection Service code 109798 (shown in N1040321FIG1), to prevent water from damaging the solenoid valve and electronic card.



n1040324: Modification of heater fixing system on top-load washing machines.

---

From serial number 40506.0001, the fixing system of the heater to the tank has been modified on all top-load washing machines affected by this note, with the introduction of a metal retainer (image N1040322FIG1 reference NEW) in place of deflector Service code 055322.

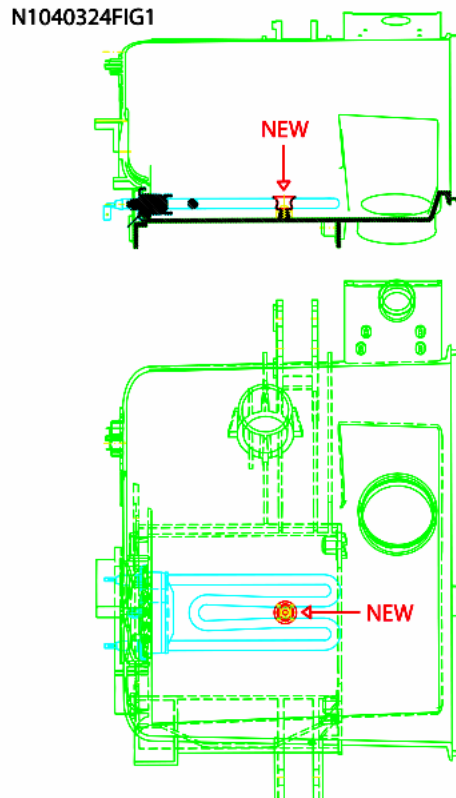


The modification has involved both heater and tanks. Given below are the Service codes of the new and old items concerned:

-PLASTIC TANK FOR 600-1000 RPM MACHINES: new 110152, premodification 083805;

-PLASTIC TANK FOR 1200 RPM MACHINES: new 110153, premodification 092023;

-HEATER: new 110148, premodification 083906.



## n1040332: 'Evizzazione' of top-load washing machines produced in Brembate

---

From serial no. 40628.0001, the following items have been modified on all top-load washing machines affected by this note:

### PLASTIC TANK

800/1000 rpm machines: premodification 110152 - new 111505

1200 rpm machines: premodification 110153 - new 111573

### PUMP BOWL TUBE

premodification 083898 - new 111502 (OKO PUMP BOWL TUBE)

### AIR TRAP

premodification 051555 - new 092173

### MICRO DELAY DEVICE

premodification 085610 - new 111494

## DRAIN PUMP

premodification 083942 - new 111409

## PRESSURE SWITCH

premodification 087499 - new 111514

premodification 087704 - new 111516

premodification 083903 - new 111493

## WIRING

### ELIMINATION OF DETERGENT RECOVERY TUBE code 055328

The modification has involved the introduction of a new industrial code with final 30.

Given below is the list of affected models with related industrial codes and spare part codes of modified wirings:

WT60FR (91263760000 - 91263760030):

Wiring: premodification 096426 - new 111515

WT62TFR (91263770000 - 91263770030):

Wiring: premodification 096427 - new 111517

WT6IT (91264500000 - 91264500030):

Wiring: premodification 096428 - new 111523

WT4IT (91264510000 - 91264510030):

Wiring: premodification 096429 - new 111529

WAT6IT (91264520030 - 91264520000):

Wiring: premodification 096434 - new 111538

WAT8IT (91264530030 - 91264530000):

Wiring: premodification 096434 - new 111538

WT5IT (91264540030 - 91264540000):

Wiring: premodification 096428 - new 111523

WT40EX (91268650030 - 91268650000):

Wiring: premodification 096432 - new 111515

WT50EX (91268660130 - 91268660100):

Wiring: premodification 096433 - new 111529

WT62EX (91268670230 - 91268670200):

Wiring: premodification 096427 - new 111517

WT82EX (91268680130 - 91268680100):

Wiring: premodification 096434 - new 111538

WT102EX (91268690130 - 91268690100):

Wiring: premodification 096434 - new 111538

WT52CSI (91268940130 - 91268940100):

Wiring: premodification 096431 - new 111551

WT80CSI (91268970130 - 91268970100):

Wiring: premodification 096437 - new 111555

WT90CSI (91268980130 - 91268980100):

Wiring: premodification 096444 - new 111561

WT100CSI (91268990130 - 91268990100):

Wiring: premodification 096434 - new 111538

WT67EU (91269700030 - 91269700000):

Wiring: premodification 096437 - new 111555

AT62IT (91271420030 - 91271420000):

Wiring: premodification 096440 - new 111568

AT82IT (91271430030 - 91271430000):

Wiring: premodification 096438 - new 111569

ATD84IT (91271440030 - 91271440000):

Wiring: premodification 096451 - new 111571

ATD104IT (91271450030 - 91271450000):

Wiring: premodification 096451 - new 111571  
ATD120EX (91271480130 - 91271480100):  
Wiring: premodification 096451 - new 111571  
AT50EX (91272040130 - 91272040100):  
Wiring: premodification 088264 - new 111505  
AT84EX (91276350130 - 91276350100):  
Wiring: premodification 096445 - new 111580  
ATD104EX (91276360130 - 91276360100):  
Wiring: premodification 096451 - new 111571  
AT64EX (91276740030 - 91276740000):  
Wiring: premodification 088264 - new 111579  
AT84AG (91276840030 - 91276840000):  
Wiring: premodification 096445 - new 111580  
AT84EO (91277260030 - 91277260000):  
Wiring: premodification 096445 - new 111580  
WT102TFR (91277280030 - 91277280000):  
Wiring: premodification 096434 - new 111538  
AT64EO (91277540030 - 91277540000):  
Wiring: premodification 088264 - new 111579  
AT50AG (91277630030 - 91277630000):  
Wiring: premodification 088264 - new 111579  
W46.08TLCSI (91278720030 - 91278720000):  
Wiring: premodification 096434 - new 111538  
W46.10TLCSI (91278730030 - 91278730000):  
Wiring: premodification 096434 - new 111538  
AT104EX (91280740030 - 91280740000):  
Wiring: premodification 096445 - new 111580  
WT120EX (91280750030 - 91280750000):  
Wiring: premodification 096434 - new 111538  
WAT10IT (91283140030 - 91283140000):  
Wiring: premodification 096434 - new 111538  
AT125FR (91284910030 - 91284910000):  
Wiring: premodification 096438 - new 111569  
WT80FR (91286690030 - 91286690000):  
Wiring: premodification 096436 - new 112221  
WT92FR (91286700030 - 91286700000):  
Wiring: premodification 096434 - new 111538  
WT112FR (91286710030 - 91286710000):  
Wiring: premodification 096434 - new 111538  
WT124FR (91286720030 - 91286720000):  
Wiring: premodification 096434 - new 111538  
WMTL80UK (91287490030 - 91287490000):  
Wiring: premodification 096542 - new 112231  
AT109FR (91291820030 - 91291820000):  
Wiring: premodification 096438 - new 111569  
AT95FR (91293880030 - 91293880000):  
Wiring: premodification 096438 - new 111569  
ATD102FR (91293930030 - 91293930000):  
Wiring: premodification 096441 - new 112235  
ATD122FR (91293940030 - 91293940000):  
Wiring: premodification 096451 - new 111571  
AT110FR (91293950030 - 91293950000):  
Wiring: premodification 096438 - new 111569  
WT100FR (91305060030 - 91305060000):  
Wiring: premodification 096436 - new 112221  
WT118FR (91305080030 - 91305080000):  
Wiring: premodification 096434 - new 111538

AT8EIT (91306100030 - 91306100000):  
Wiring: premodification 096438 - new 111569  
WT119FR (91319910030 - 91319910000):  
Wiring: premodification 096434 - new 111538

**n1040336: Elimination of vent from rear panel of top-load washing machines.**

---

From serial no. 40825.0001, the vent tube has been modified with the elimination of the vent from the rear panel of all top-load washing machines affected by this note (see photo N1040336FIG1).

Given below are the codes of the modified items:

- Vent tube: premodification 085471 new 112602;
- Rear panel: premodification 098566 new 112632;
- Vent grid code 083944 has been eliminated.

N1040336FIG1



**n1040340: TUB ASSEMBLY 111505 - 111573 (EVO II) ON EVOI TOP LOADING APPLIANCES**

---

Given below are the instructions to install the new EVOII Top Loading tubs (codes 111505 and 111573) on EVOI Top Loading

washing machines produced before serial no. 40628.0001 (see note n1040332).

Please note that:

the EVOI Top Loading range tubs (spare part codes 110152-110153) are no longer managed as spare parts and have been replaced as follows:

if you order code 110152 (EVOI T.L. 600-1000 RPM TUB) you will receive in its place:

- 111505: EVOII T.L. 600-1000 RPM TUB

- 111409: EVOII T.L. DRAIN PUMP

if you order code 110153 (EVOI T.L. 1200 RPM TUB) you will receive in its place:

- 111573: EVOII T.L. 1200 RPM TUB-BASKET ASSEMBLY

- 111409: EVOII T.L. DRAIN PUMP

Proceed as follows:

1) Replace the EVOI DRAIN PUMP with the new EVOII DRAIN PUMP - 111409;

2) Eliminate the DETERGENT RECOVERY TUBE (the new tub and new pump are not provided with the corresponding hole);

3) Do not remove the VENT TUBE that is on the appliance (the one on the new EVOII tub-basket assembly is no longer provided with the vent on the rear panel).

Given below are the models affected:

26376 - WT60FR

26377 - WT62TFR

26450 - WT6IT

26451 - WT4IT

26452 - WAT6IT

26453 - WAT8IT

26454 - WT5IT

26865 - WT40EX

26866 - WT50EX

26867 - WT62EX

26868 - WT82EX

26869 - WT102EX

26894 - WT52CSI

26897 - WT80CSI

26898 - WT90CSI

26899 - WT100CSI

26970 - WT67EU

27142 - AT62IT

27143 - AT82IT

27144 - ATD84IT

27145 - ATD104IT

27148 - ATD120EX

27204 - AT50EX

27635 - AT84EX

27636 - ATD104EX

27674 - AT64EX

27684 - AT84AG

27726 - AT84EO

27728 - WT102TFR

27754 - AT64EO

27763 - AT50AG

27872 - W46.08TLCSI

mod.WT100CSI

27873 - W46.10TLCSI  
28074 - AT104EX  
28075 - WT120EX  
28314 - WAT10IT  
28491 - AT125FR  
28669 - WT80FR  
28670 - WT92FR  
28671 - WT112FR  
28672 - WT124FR  
28749 - WMTL80UK  
29182 - AT109FR  
29388 - AT95FR  
29393 - ATD102FR  
29394 - ATD122FR  
29395 - AT110FR  
30506 - WT100FR  
30508 - WT118FR  
30610 - AT8EIT  
31991 - WT119FR

#### n1040344: Modification of loading port on Top Loading washing machines.

---

The loading port with replacement P/N 112743 has been installed on the models affected by the current bulletin from serial number 41119.0001; the new port is not interchangeable with premodification P/N 083895.

The commercial code and the code of affected models are given below.

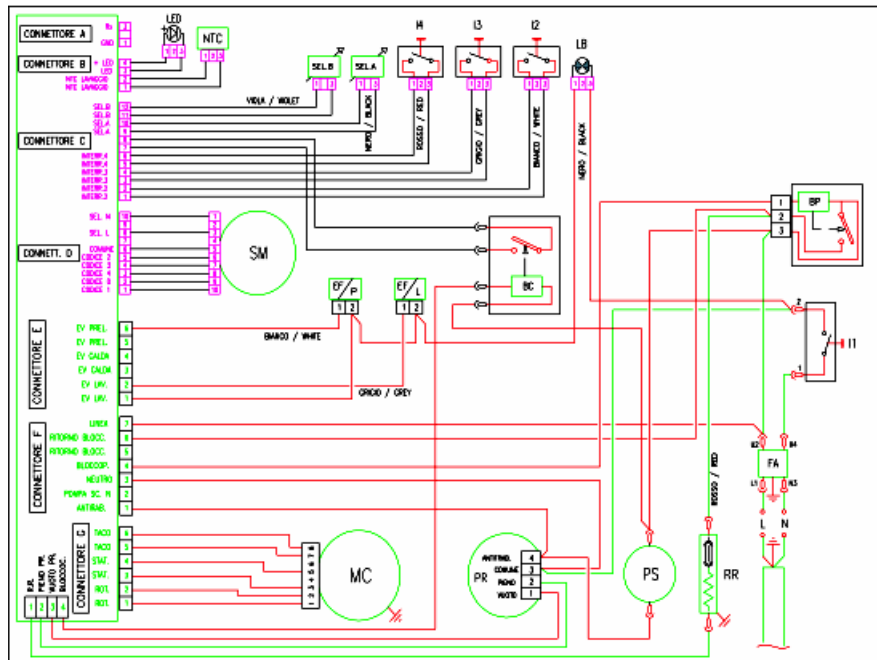
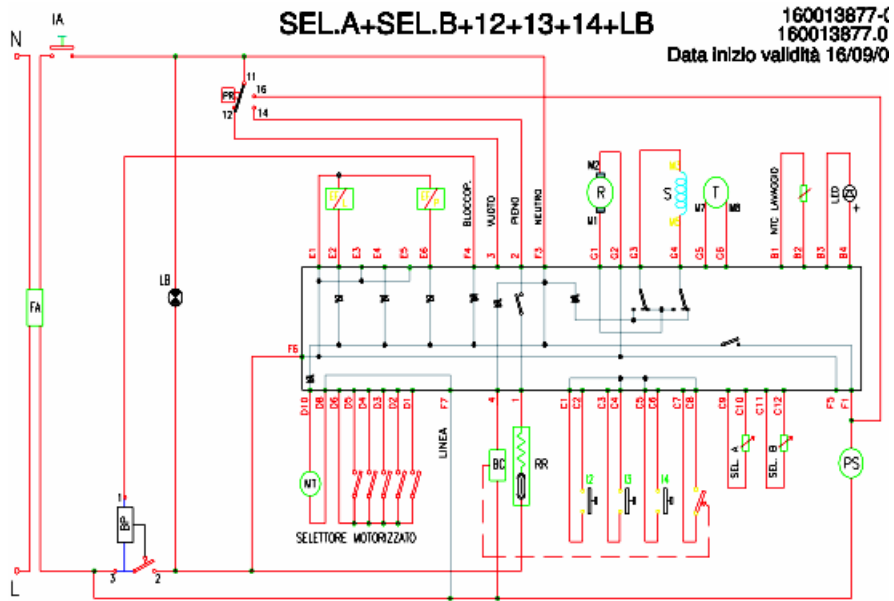
26376WT60FR  
26377WT62TFR  
26451WT4IT  
26452WAT6IT  
26453WAT8IT  
26454WT5IT  
26865WT40EX  
26866WT50EX  
26867WT62EX  
26868WT82EX  
26869WT102EX  
26894WT52CSI  
26897WT80CSI  
26898WT90CSI  
26899WT100CSI  
26970WT67EU  
27145ATD104IT  
27636ATD104EX  
27728WT102TFR  
27763AT50AG  
27872W46.08TLCSI  
28074AT104EX  
28314WAT10IT

mod.WT100CSI

28670WT92FR  
28749WMTL80UK  
30506WT100FR  
30610AT8EIT  
33194AVTL62EU  
33195AVTL82EU  
33196AVTL83EU  
33198AVTL104EU  
33686AVTL60AG  
33738AVTL60EO  
33739AVTL84EO  
33807AVTL62IT  
33915WITL85FR  
33916WITL88FR  
33917WITL90FR  
33918WITL100FR  
33969AVTL108FR  
34265WITP82EU  
34266WITP102EU  
34267WITL105EU  
34269WITE87EU  
34280WITL85EU

Electric schemes and links

Cod. 160013877-0





## Legend

Legend: 160013877-0

AQS	Aquastop electrovalve	Mzbn/MTA	zbn timer motor
B	Buzzer	N	Neutral or Terminal Board
BC	Blocco Cesto	NC	Spin cycle exclusion
BF	Terminal board contact, motor fan and dryer	P	Pressure switch
BP	Buzzer	P1	1st level pressure cut-off switch
C	Condensator	P2	2nd level pressure cut-off switch
CA	Condensator	PA	High speed potentiometer
DV	Switching device	PB	Low speed potentiometer
EF/CL	Electro-Valve Cold Water / Bleach	PL	Pure Wool
EF/L	Electro-Valve Cold Water / Wash	PM	Motor Thermoprotector
EF/P	Electro-Valve Cold Water / Prewash	PR	Timer programmer or Pressure switch
ER	Exclude Heating Element	PS	Drain pump
ET	Thermostat disactivation	R	Heating element
EV	Electrovalve	RE	Relay
EVA	Dryer electrovalve	RR	Heating element
EVC	Hot water electrovalve	RV	Speed regulator
EVF	Elettrovalvola acqua fredda	Ras/RA	Dryer heating element
EVL	Wash electrovalve	S	LED
EVP	Pre Wash electrovalve	SL	Line LED
FA	Antijamming filter	SO	Door LED
FD	Delicate drying cycle thermostat	SR	Heating LED
FE	Strong drying cycle thermostat	ST	Temperature selector
FRT	Thermofusible Heating Element	SV	Speed Selector for Spin
I	Inverter	T	Timer contacts
II..2..3..	Switches/switching devices	TA	Drying timer contacts
IA	Switch On/Off	TB	Low Temperature Thermostat
IC	Switch N.C. - 1/2 Load	TC	Spider wheel earth
ID	Switch display	TFL	Flange earth
IE	Water Saving Device	TG	Main earth
IF	Switch - Spin Reduction	TH	Thermostat
IP	Door switch	TH1	1st temperature thermostat
IR	Line switch	TH2	2nd temperature thermostat
IS	Water-stop	TH3	3rd temperature thermostat

L	Line or Lamp	THF	Operating thermostat
LB	Low Level	THR	Adjustable thermostat
LN	Normal Level	TM	Motor earth
LS	Pilot lamp	TMB	Main cabinet earth
M	Earth-symbol	TMP	Motor thermal protector
MC	Spin cycle motor	TMS	Thermostop
MI	MOTOR WITH PULLEY	TP	Thermal protector
ML	Wash cycle motor	TPS	Drain pump earth
MO	Terminal Board	TR	Heating element earth
MP	Door dip-switch	TS	Safety thermostat
MR	Thermal Lock	TT	Timer earthing connection
MT	Timer motor	TTH	Earthing Thermostat
MV	Motor fan	TV	Tank earth
MV -Ras	Dryer heating element	ZBN	Timer

Electric schemes and links

Cod. 160013878-0

160013878.02

TABELLA FILI BASE

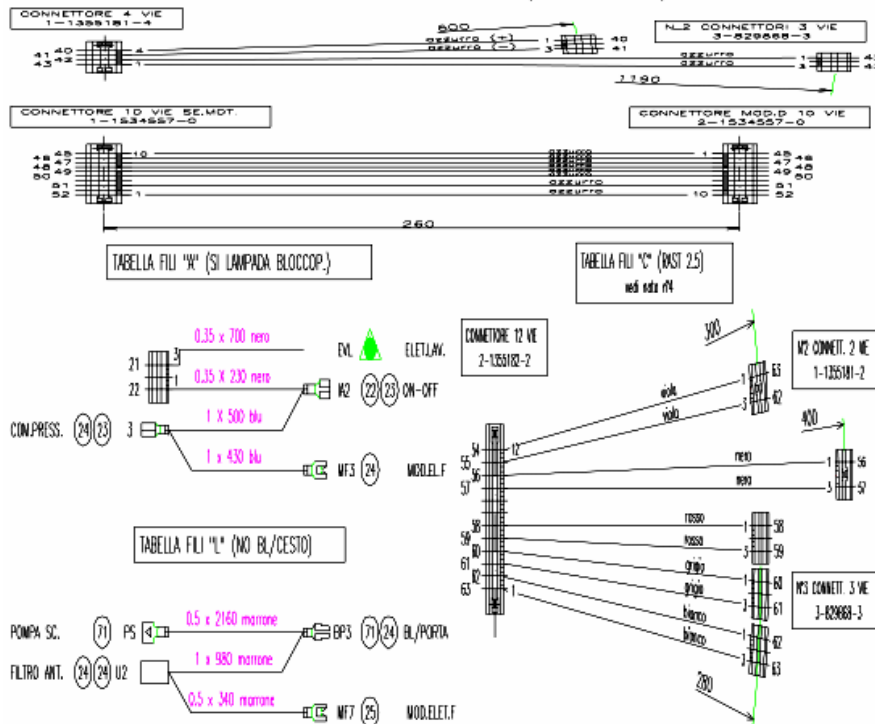
Data inizio validità

16/09/02

ATTENZIONE: IL CABLAGGIO DEVE ESSERE PRODOTTO UTILIZZANDO CAVETTI PRIVI DI STAMPIGIATURA.

ON/OFF	02	IA1	1 x 310 blu	U4	02	FILTRO ANT.
MODULO EL.G	03	MG1	0,75 x 1210 nero	M1	03	MOTORE 1
MODULO EL.G	04	MG2	0,75 x 1210 marrone	M2	04	MOTORE 2
MODULO EL.G	05	MG3	0,75 x 1210 bianca	M3	05	MOTORE 3
MODULO EL.G	06	MG4	0,75 x 1210 blu	M4	06	MOTORE 4
MODULO EL.G	07	MG5	0,75 x 1210 rosso	M5	07	MOTORE 5
MODULO EL.G	08	MG6	0,75 x 1210 rosso	M6	08	MOTORE 6
MODULO ELE.	10	ME2	0,5 x 630 grigio	EVL	10	ELET.LAV.
MODULO ELE.	11	ME1	0,5 x 550 bianco	EVP	11, 12	ELET.PREL.
ELET.LAV.	12	WL	0,5 x 220 bianco			
MODULO ELE.	14	ME6	0,5 x 550 nero	EVP	14	ELET.PREL.
CONN.1	16	CN3	0,75 x 450 rosso	1	16	VUOTO PR.
CONN.1	17	CN1	1 x 940 bianca	R1	17	RES.RISC.
CONN.1	18	CN2	1 x 450 marrone	2	18	PIENO PR.
MODULO EL.F	19	MF1	0,5 x 430 azzurro	+	19, 20	ANTIRAG.
POMPA SC.	20	PS	0,5 x 1690 azzurro			
MODULO EL.F	26	MF6	0,5 x 1130 rosso	MFZ	26, 27	BLOCCOP.
RES.RISC.	27	R1A	1 x 1860 rosso			
MODULO EL.F	28	MF4	0,5 x 1130 grigio	MF1	28	BLOCCOP.
TERRA GEN.	70		1 x 1090 giallo v.		70, 71	MOTORE
RESISTENZA	71		1 x 300 giallo v.			

RAST 2,5-SPOSTAMENTO D'ISOLANTE (vedi nota n.4)



## Legend

Legend: 160013878-0

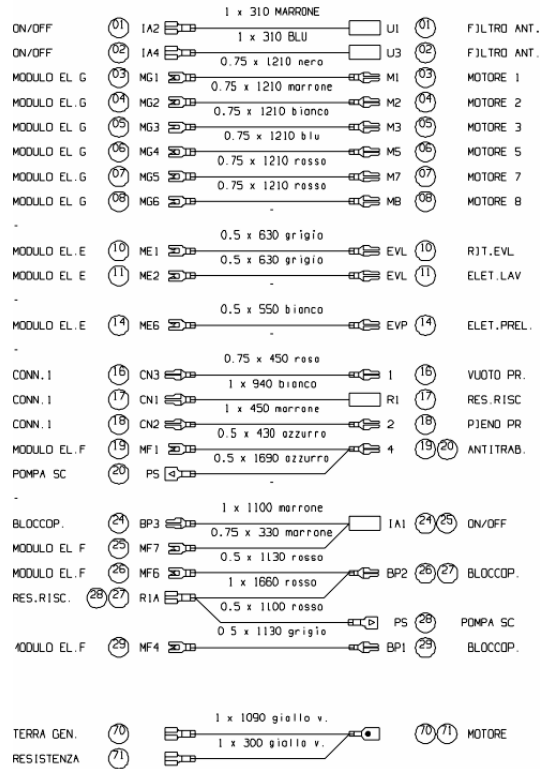
AQS	Aquastop electrovalve	Mzbn/MTA	zbn timer motor
B	Buzzer	N	Neutral or Terminal Board
BC	Blocco Cesto	NC	Spin cycle exclusion
BF	Terminal board contact, motor fan and dryer	P	Pressure switch
BP	Buzzer	P1	1st level pressure cut-off switch
C	Condensator	P2	2nd level pressure cut-off switch
CA	Condensator	PA	High speed potentiometer
DV	Switching device	PB	Low speed potentiometer
EF/CL	Electro-Valve Cold Water / Bleach	PL	Pure Wool
EF/L	Electro-Valve Cold Water / Wash	PM	Motor Thermoprotector
EF/P	Electro-Valve Cold Water / Prewash	PR	Timer programmer or Pressure switch
ER	Exclude Heating Element	PS	Drain pump
ET	Thermostat disactivation	R	Heating element
EV	Electrovalve	RE	Relay
EVA	Dryer electrovalve	RR	Heating element
EVC	Hot water electrovalve	RV	Speed regulator
EVF	Elettrovalvola acqua fredda	Ras/RA	Dryer heating element
EVL	Wash electrovalve	S	LED
EVP	Pre Wash electrovalve	SL	Line LED
FA	Antijamming filter	SO	Door LED
FD	Delicate drying cycle thermostat	SR	Heating LED
FE	Strong drying cycle thermostat	ST	Temperature selector
FRT	Thermofusible Heating Element	SV	Speed Selector for Spin
I	Inverter	T	Timer contacts
II..2..3..	Switches/switching devices	TA	Drying timer contacts
IA	Switch On/Off	TB	Low Temperature Thermostat
IC	Switch N.C. - 1/2 Load	TC	Spider wheel earth
ID	Switch display	TFL	Flange earth
IE	Water Saving Device	TG	Main earth
IF	Switch - Spin Reduction	TH	Thermostat
IP	Door switch	TH1	1st temperature thermostat
IR	Line switch	TH2	2nd temperature thermostat
IS	Water-stop	TH3	3rd temperature thermostat

L	Line or Lamp	THF	Operating thermostat
LB	Low Level	THR	Adjustable thermostat
LN	Normal Level	TM	Motor earth
LS	Pilot lamp	TMB	Main cabinet earth
M	Earth-symbol	TMP	Motor thermal protector
MC	Spin cycle motor	TMS	Thermostop
MI	MOTOR WITH PULLEY	TP	Thermal protector
ML	Wash cycle motor	TPS	Drain pump earth
MO	Terminal Board	TR	Heating element earth
MP	Door dip-switch	TS	Safety thermostat
MR	Thermal Lock	TT	Timer earthing connection
MT	Timer motor	TTH	Earthing Thermostat
MV	Motor fan	TV	Tank earth
MV -Ras	Dryer heating element	ZBN	Timer

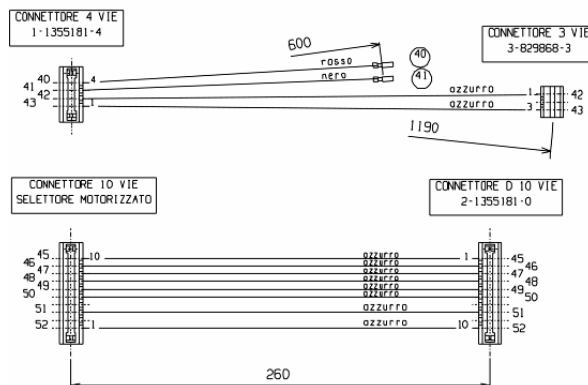
## Electric schemes and links

Cod. ce032600

CE032600



RAST 2.5-SPOSTAMENTO D'ISOLANTE (vedi nota n.4)



## Legend

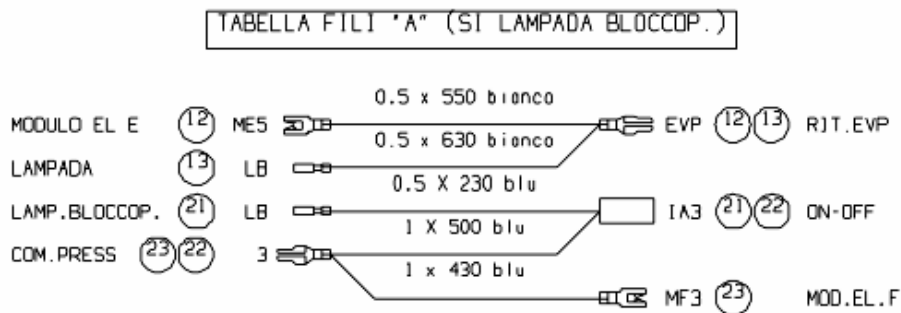
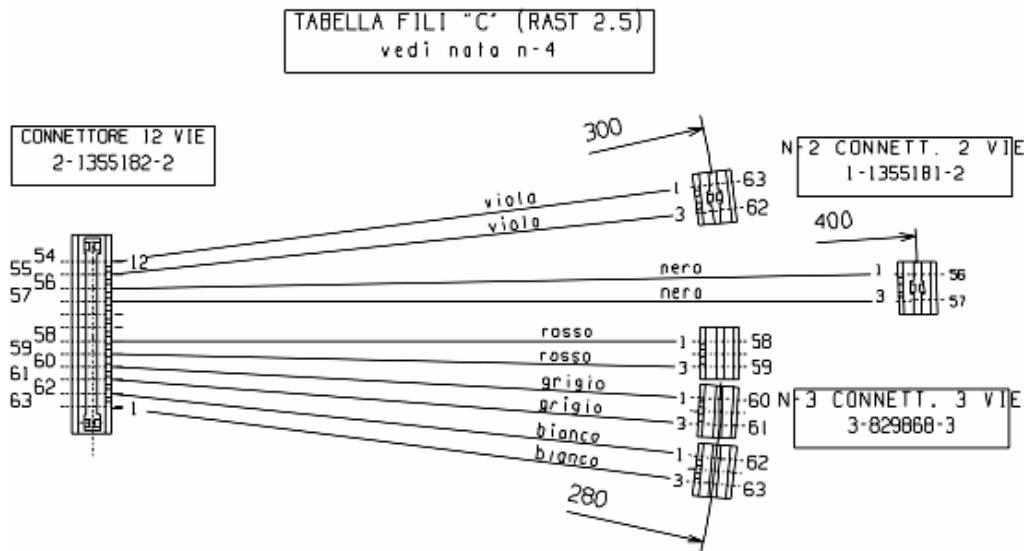
Legend: ce032600

AE	Ignition transformer	PE	Plate electric (Normal and Rapid)
AT	Ignition transformer	PEL	Wall socket
CF	Oven commutator	PIF	Cooking programmer
CP	Plate commutator(Normal end Rapid)	POT	Thermostated potentiometer
CT	Plate commutator(Automatic)	PT	Termoprotector
DC DR	Double Knob double crown burner control card	PTC	Thermostated sensor
EV	Electro-Valve	RCE	Grill heating element ex- ternal
FC	End of cooking programmer	RCI	Grill heating element internal
FRONT	Daschboard	RE	Energy regulator
I/LF	OVEN LIGHT SWITCH	RF	Oven lower heating element
I/LF-MG	OVEN LIGHT SWITCH + ROTISSERIE	RG	Grill heating element
I/MG	TURNSPIT SWITCH	RG COM	Grill heating element un- ion
IL	Knobs' Lighting	RV	Heating element ventilated oven
ILG	Lamp switch turnspit	SA	Boiler operating led
IT	Thermostated switch	SB	Thermostated burner led
L	Line (Feed)	SF	Warning light working
LF	Oven light	SO	Probe temperature
LI	Oven light	SP	Operating Indicator Light for the Plate
M	Suction motor handle	ST	Warning light thermostat
MG	Turnspit motor	TH	Thermostat fixed
MO	Terminal board	TH2	Thermostated burner cooling
MUFF	Oven	THR	Adjustable thermostat
MV	Fan motor	TP	Termoprotector
N	Neutral (Feed)	TRAV	Support terminal board
PA	Ignition push-button	TRM	Thermostated burner control card

Electric schemes and links

Cod. ce032610

CE032610





## Legend

Legend: ce032610

AQS	Aquastop electrovalve	Mzbn/MTA	zbn timer motor
B	Buzzer	N	Neutral or Terminal Board
BC	Blocco Cesto	NC	Spin cycle exclusion
BF	Terminal board contact, motor fan and dryer	P	Pressure switch
BP	Buzzer	P1	1st level pressure cut-off switch
C	Condensator	P2	2nd level pressure cut-off switch
CA	Condensator	PA	High speed potentiometer
DV	Switching device	PB	Low speed potentiometer
EF/CL	Electro-Valve Cold Water / Bleach	PL	Pure Wool
EF/L	Electro-Valve Cold Water / Wash	PM	Motor Thermoprotector
EF/P	Electro-Valve Cold Water / Prewash	PR	Timer programmer or Pressure switch
ER	Exclude Heating Element	PS	Drain pump
ET	Thermostat disactivation	R	Heating element
EV	Electrovalve	RE	Relay
EVA	Dryer electrovalve	RR	Heating element
EVC	Hot water electrovalve	RV	Speed regulator
EVF	Elettrovalvola acqua fredda	Ras/RA	Dryer heating element
EVL	Wash electrovalve	S	LED
EVP	Pre Wash electrovalve	SL	Line LED
FA	Antijamming filter	SO	Door LED
FD	Delicate drying cycle thermostat	SR	Heating LED
FE	Strong drying cycle thermostat	ST	Temperature selector
FRT	Thermofusible Heating Element	SV	Speed Selector for Spin
I	Inverter	T	Timer contacts
II...2...3..	Switches/switching devices	TA	Drying timer contacts
IA	Switch On/Off	TB	Low Temperature Thermostat
IC	Switch N.C. - 1/2 Load	TC	Spider wheel earth
ID	Switch display	TFL	Flange earth
IE	Water Saving Device	TG	Main earth
IF	Switch - Spin Reduction	TH	Thermostat
IP	Door switch	TH1	1st temperature thermostat
IR	Line switch	TH2	2nd temperature thermostat
IS	Water-stop	TH3	3rd temperature thermostat

L	Line or Lamp	THF	Operating thermostat
LB	Low Level	THR	Adjustable thermostat
LN	Normal Level	TM	Motor earth
LS	Pilot lamp	TMB	Main cabinet earth
M	Earth-symbol	TMP	Motor thermal protector
MC	Spin cycle motor	TMS	Thermostop
MI	MOTOR WITH PULLEY	TP	Thermal protector
ML	Wash cycle motor	TPS	Drain pump earth
MO	Terminal Board	TR	Heating element earth
MP	Door dip-switch	TS	Safety thermostat
MR	Thermal Lock	TT	Timer earthing connection
MT	Timer motor	TTH	Earthing Thermostat
MV	Motor fan	TV	Tank earth
MV -Ras	Dryer heating element	ZBN	Timer

## Electric schemes and links

Cod. Ig039700



## Legend

Legend: Ig039700

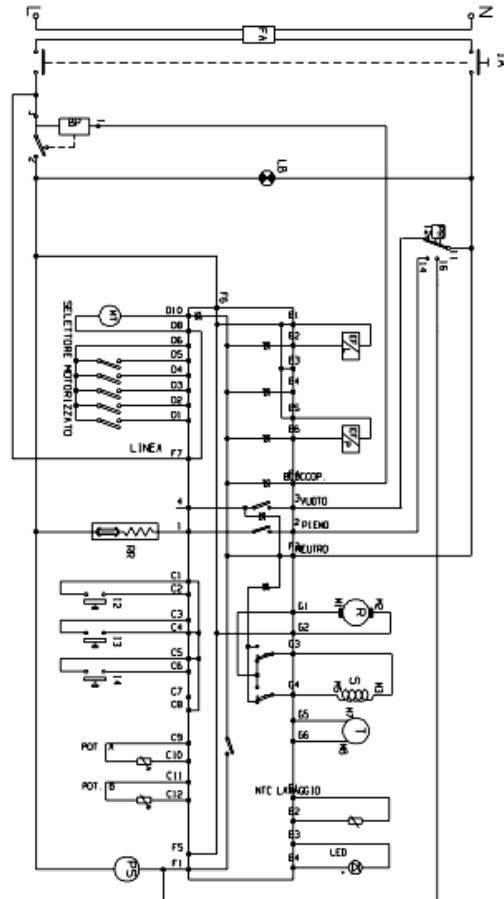
AQS	Aquastop electrovalve	Mzbn/MTA	zbn timer motor
B	Buzzer	N	Neutral or Terminal Board
BC	Blocco Cesto	NC	Spin cycle exclusion
BF	Terminal board contact, motor fan and dryer	P	Pressure switch
BP	Buzzer	P1	1st level pressure cut-off switch
C	Condensator	P2	2nd level pressure cut-off switch
CA	Condensator	PA	High speed potentiometer
DV	Switching device	PB	Low speed potentiometer
EF/CL	Electro-Valve Cold Water / Bleach	PL	Pure Wool
EF/L	Electro-Valve Cold Water / Wash	PM	Motor Thermoprotector
EF/P	Electro-Valve Cold Water / Prewash	PR	Timer programmer or Pressure switch
ER	Exclude Heating Element	PS	Drain pump
ET	Thermostat disactivation	R	Heating element
EV	Electrovalve	RE	Relay
EVA	Dryer electrovalve	RR	Heating element
EVC	Hot water electrovalve	RV	Speed regulator
EVF	Elettrovalvola acqua fredda	Ras/RA	Dryer heating element
EVL	Wash electrovalve	S	LED
EVP	Pre Wash electrovalve	SL	Line LED
FA	Antijamming filter	SO	Door LED
FD	Delicate drying cycle thermostat	SR	Heating LED
FE	Strong drying cycle thermostat	ST	Temperature selector
FRT	Thermofusible Heating Element	SV	Speed Selector for Spin
I	Inverter	T	Timer contacts
II...2...3..	Switches/switching devices	TA	Drying timer contacts
IA	Switch On/Off	TB	Low Temperature Thermostat
IC	Switch N.C. - 1/2 Load	TC	Spider wheel earth
ID	Switch display	TFL	Flange earth
IE	Water Saving Device	TG	Main earth
IF	Switch - Spin Reduction	TH	Thermostat
IP	Door switch	TH1	1st temperature thermostat
IR	Line switch	TH2	2nd temperature thermostat
IS	Water-stop	TH3	3rd temperature thermostat

L	Line or Lamp	THF	Operating thermostat
LB	Low Level	THR	Adjustable thermostat
LN	Normal Level	TM	Motor earth
LS	Pilot lamp	TMB	Main cabinet earth
M	Earth-symbol	TMP	Motor thermal protector
MC	Spin cycle motor	TMS	Thermostop
MI	MOTOR WITH PULLEY	TP	Thermal protector
ML	Wash cycle motor	TPS	Drain pump earth
MO	Terminal Board	TR	Heating element earth
MP	Door dip-switch	TS	Safety thermostat
MR	Thermal Lock	TT	Timer earthing connection
MT	Timer motor	TTH	Earthing Thermostat
MV	Motor fan	TV	Tank earth
MV -Ras	Dryer heating element	ZBN	Timer

Electric schemes and links

Cod. se089100

SE089100



LEGENDA					
SEL. A - selettore A	selector A	selecteur A	Selektor A	Selector A	Selector A
SEL. B - selettore B	selector B	selecteur B	Selektor B	Selector B	Selector B
I2 - Interruttore 2	switch 2	Interrupteur 2	chalter 2	Interruptor 2	Interruptor 2
I3 - Interruttore 3	switch 3	Interrupteur 3	chalter 3	Interruptor 3	Interruptor 3
I4 - Interruttore 4	switch 4	Interrupteur 4	chalter 4	Interruptor 4	Interruptor 4
L0 - lampada bloccaporta	Door locked light	lampe Porte Verrouillee	Leuchte Tür verriegelt	Lámpara Puerta bloqueada	Lámpara Porta trancada

## Legend

Legend: se089100

AQS	Aquastop electrovalve	Mzbn/MTA	zbn timer motor
B	Buzzer	N	Neutral or Terminal Board
BC	Blocco Cesto	NC	Spin cycle exclusion
BF	Terminal board contact, motor fan and dryer	P	Pressure switch
BP	Buzzer	P1	1st level pressure cut-off switch
C	Condensator	P2	2nd level pressure cut-off switch
CA	Condensator	PA	High speed potentiometer
DV	Switching device	PB	Low speed potentiometer
EF/CL	Electro-Valve Cold Water / Bleach	PL	Pure Wool
EF/L	Electro-Valve Cold Water / Wash	PM	Motor Thermoprotector
EF/P	Electro-Valve Cold Water / Prewash	PR	Timer programmer or Pressure switch
ER	Exclude Heating Element	PS	Drain pump
ET	Thermostat disactivation	R	Heating element
EV	Electrovalve	RE	Relay
EVA	Dryer electrovalve	RR	Heating element
EVC	Hot water electrovalve	RV	Speed regulator
EVF	Elettrovalvola acqua fredda	Ras/RA	Dryer heating element
EVL	Wash electrovalve	S	LED
EVP	Pre Wash electrovalve	SL	Line LED
FA	Antijamming filter	SO	Door LED
FD	Delicate drying cycle thermostat	SR	Heating LED
FE	Strong drying cycle thermostat	ST	Temperature selector
FRT	Thermofusible Heating Element	SV	Speed Selector for Spin
I	Inverter	T	Timer contacts
II...2...3..	Switches/switching devices	TA	Drying timer contacts
IA	Switch On/Off	TB	Low Temperature Thermostat
IC	Switch N.C. - 1/2 Load	TC	Spider wheel earth
ID	Switch display	TFL	Flange earth
IE	Water Saving Device	TG	Main earth
IF	Switch - Spin Reduction	TH	Thermostat
IP	Door switch	TH1	1st temperature thermostat
IR	Line switch	TH2	2nd temperature thermostat
IS	Water-stop	TH3	3rd temperature thermostat

L	Line or Lamp	THF	Operating thermostat
LB	Low Level	THR	Adjustable thermostat
LN	Normal Level	TM	Motor earth
LS	Pilot lamp	TMB	Main cabinet earth
M	Earth-symbol	TMP	Motor thermal protector
MC	Spin cycle motor	TMS	Thermostop
MI	MOTOR WITH PULLEY	TP	Thermal protector
ML	Wash cycle motor	TPS	Drain pump earth
MO	Terminal Board	TR	Heating element earth
MP	Door dip-switch	TS	Safety thermostat
MR	Thermal Lock	TT	Timer earthing connection
MT	Timer motor	TTH	Earthing Thermostat
MV	Motor fan	TV	Tank earth
MV -Ras	Dryer heating element	ZBN	Timer