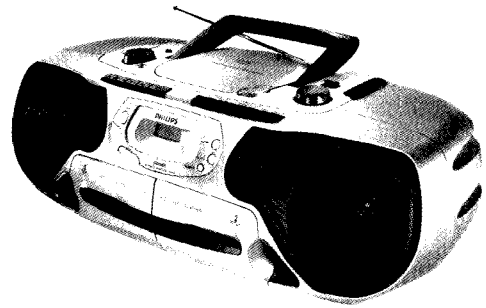


Service
Service
Service



Service Manual



TABLE OF CONTENTS

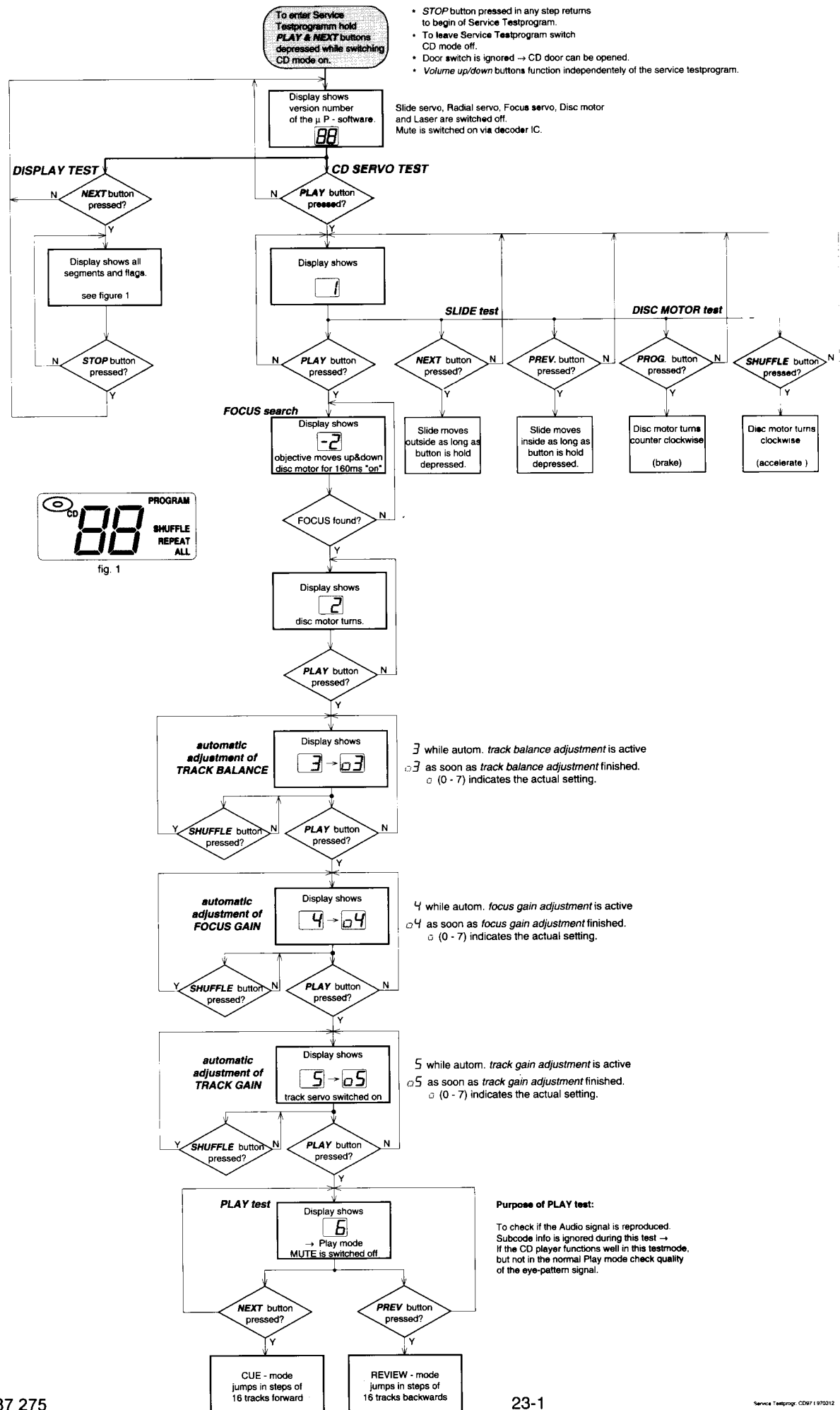
	chapter		chapter
Handling chip components and safety	1	RECORDER BOARD	
Connections & Controls	2 - 6	circuit diagram	19
Specifications	7	layout diagram	20
Disassembly Diagram	8	CD MODULE	
Block Diagram	9	circuit diagram	21
Wiring Diagram	10	layout diagram	22
FRONT BOARD		CD Service Test Program	23
circuit diagram	11	Abbreviations and Pin-description of CD ICs.....	24
layout diagram	12	EXPLODED VIEWS DIAGRAM	
TUNER BOARD (FW/MW)		cabinet	26
circuit diagram	13	tape deck	25
layout diagram	14	Mechanical partslist	25
TUNER BOARD (FM/LW/MW)		Electrical partslist	27 - 32
circuit diagram	15		
layout diagram	16		
AUDIO BOARD			
circuit diagram	17		
layout diagram	18		

Safety regulations require that the set be restored to its original condition and that parts which are identical with those specified be used.

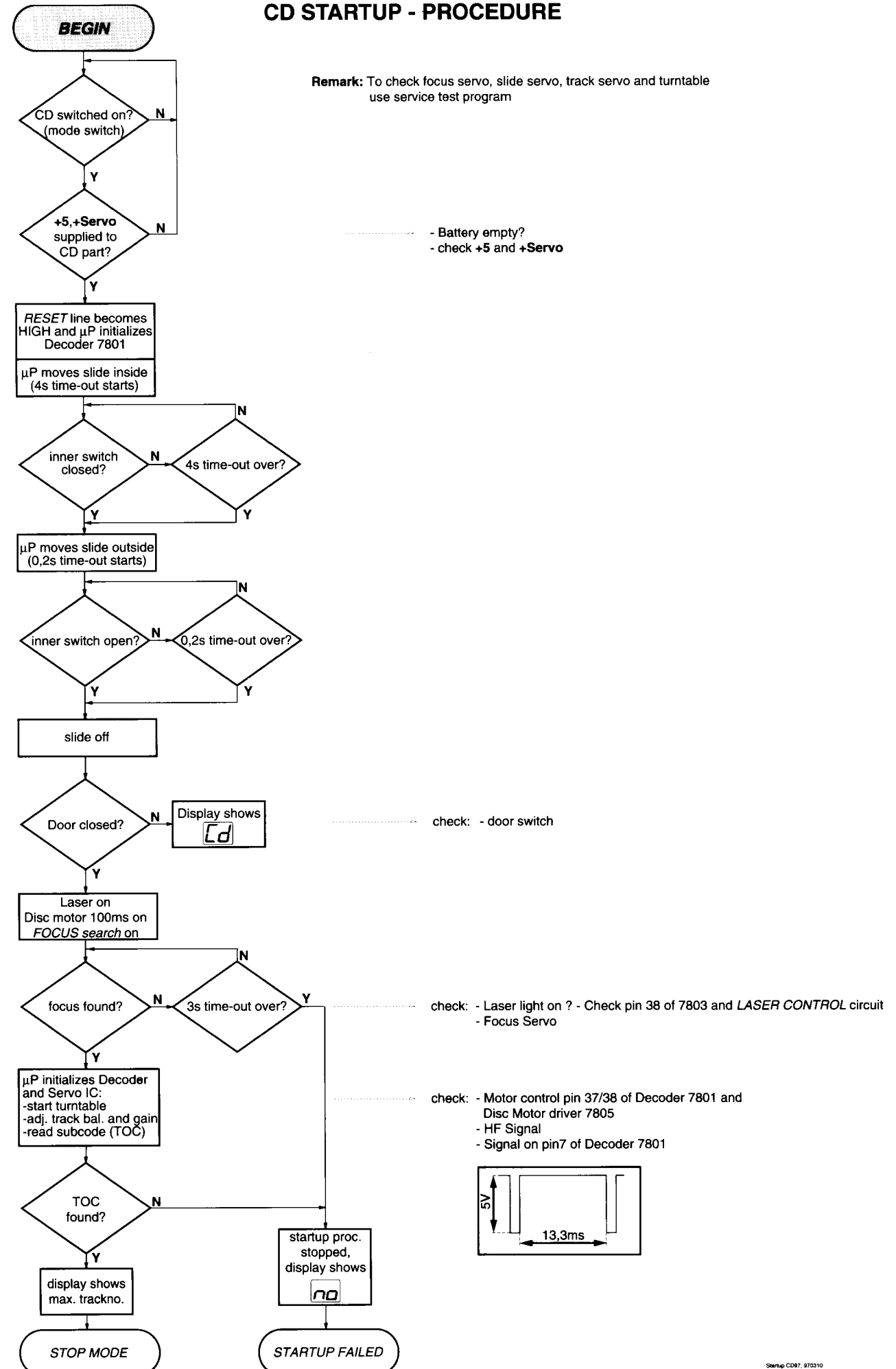
© Copyright 1995 Philips Consumer Electronics B.V. Eindhoven, The Netherlands
All rights reserved. No part of this publication may be reproduced, stored in a retrieval system or transmitted, in any form or by any means, electronic, mechanical, photocopying, or otherwise without the prior permission of Philips.



CD - SERVICE TESTPROGRAM

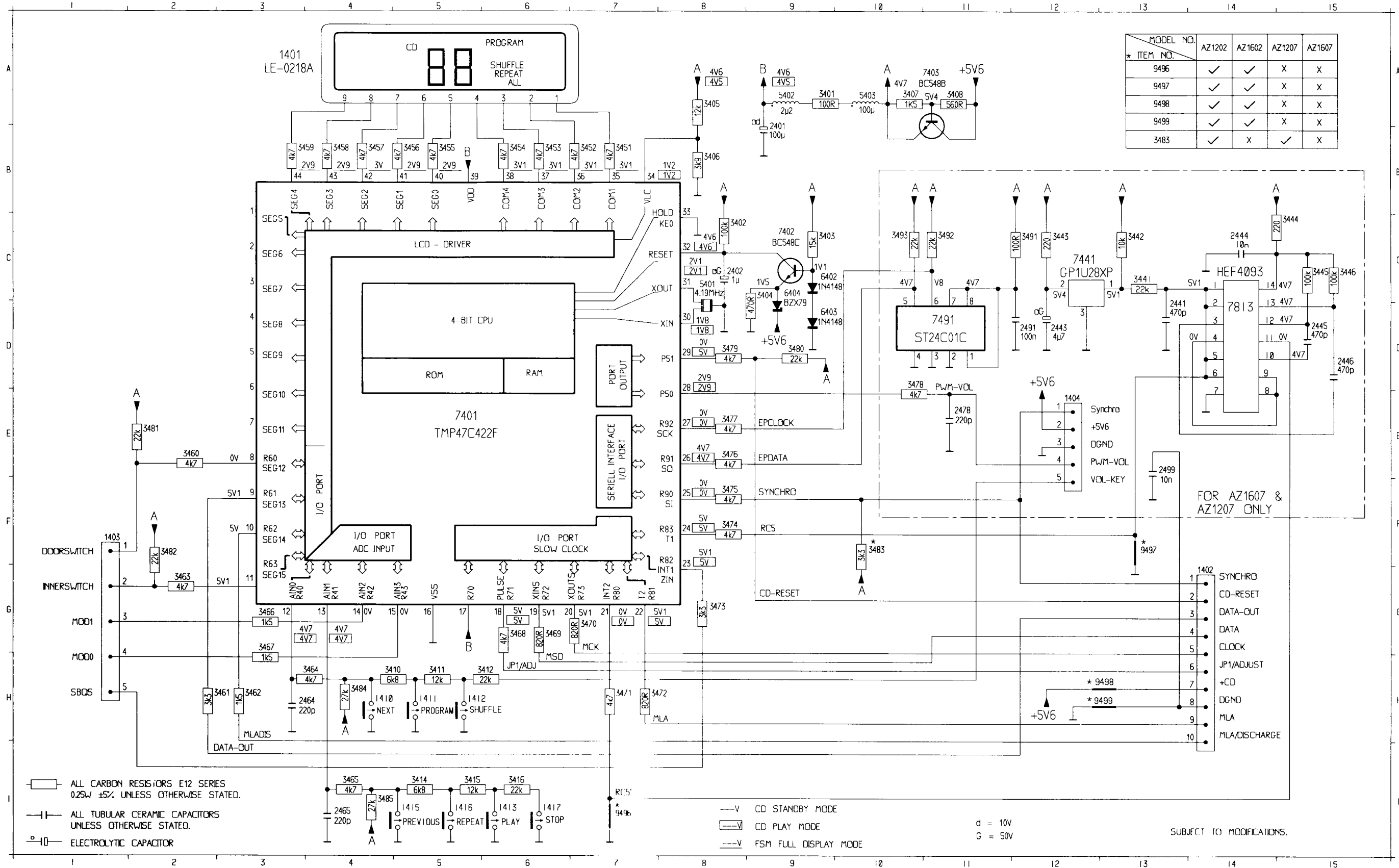


CD STARTUP - PROCEDURE



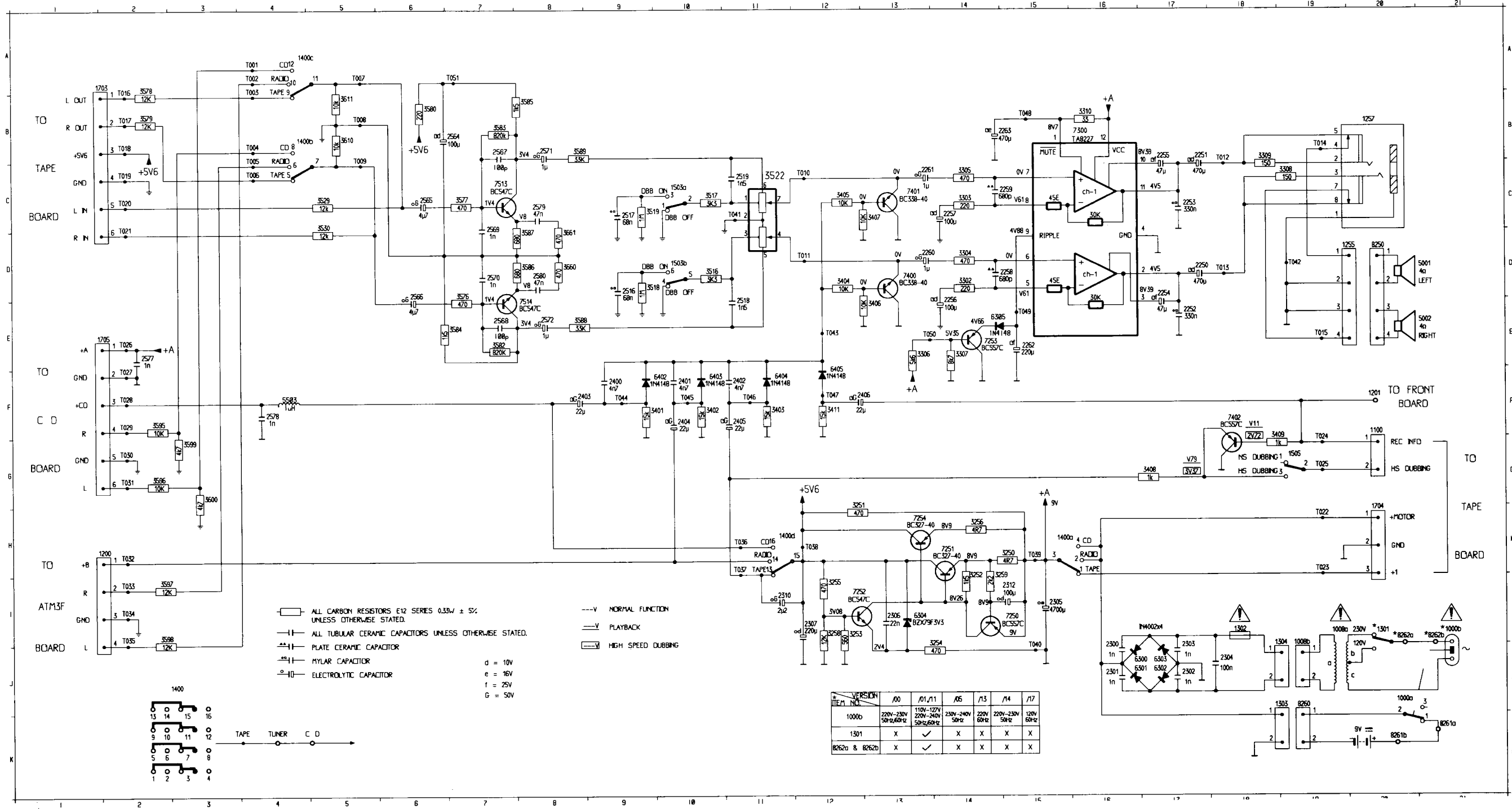
FRONT BOARD - CIRCUIT DIAGRAM

1401	A 3	1411	H 5	1417	I 6	2444	C14	2478	E11	3403	C 9	3408	A11	3415	I 10	3444	C15	3453	B 8	3458	B 4	3463	G 2	3468	G 6	3473	F 8	3478	D10	3483	F10	3493	C10	6403	D 8	7441	C12	9498	H13
1402	G14	1412	H 5	2401	B 9	2445	D15	2491	D12	3404	C 9	3410	H 4	3416	I 10	3445	C15	3454	B 8	3459	B 4	3464	H 4	3469	G 6	3474	F 8	3479	D10	3484	H 4	5401	C 8	6404	C 8	7491	D11	9499	H13
1403	F 1	1413	I 6	2402	C 8	2446	D15	2499	E13	3405	A 8	3411	H 4	3417	I 10	3446	C15	3455	B 8	3460	B 4	3465	I 4	3470	F 8	3475	F 8	3480	D 9	3485	I 4	5402	A 9	7401	C 8	7813	D14		
1404	E12	1415	I 6	2441	D13	2464	H 4	3401	A 8	3406	B 8	3412	H 4	3418	I 10	3447	C15	3456	B 8	3461	B 4	3466	G 3	3471	F 8	3476	F 8	3481	F 2	3491	C12	5403	A10	7402	C 8	9496	I 7		
1410	H 4	1416	I 6	2443	D12	2465	I 4	3402	C 8	3407	A10	3414	I 6	3420	I 10	3448	C15	3457	B 4	3462	H 5	3467	G 3	3472	H 8	3477	F 8	3482	F 2	3492	C11	6402	C 9	7403	A10	9497	F13		



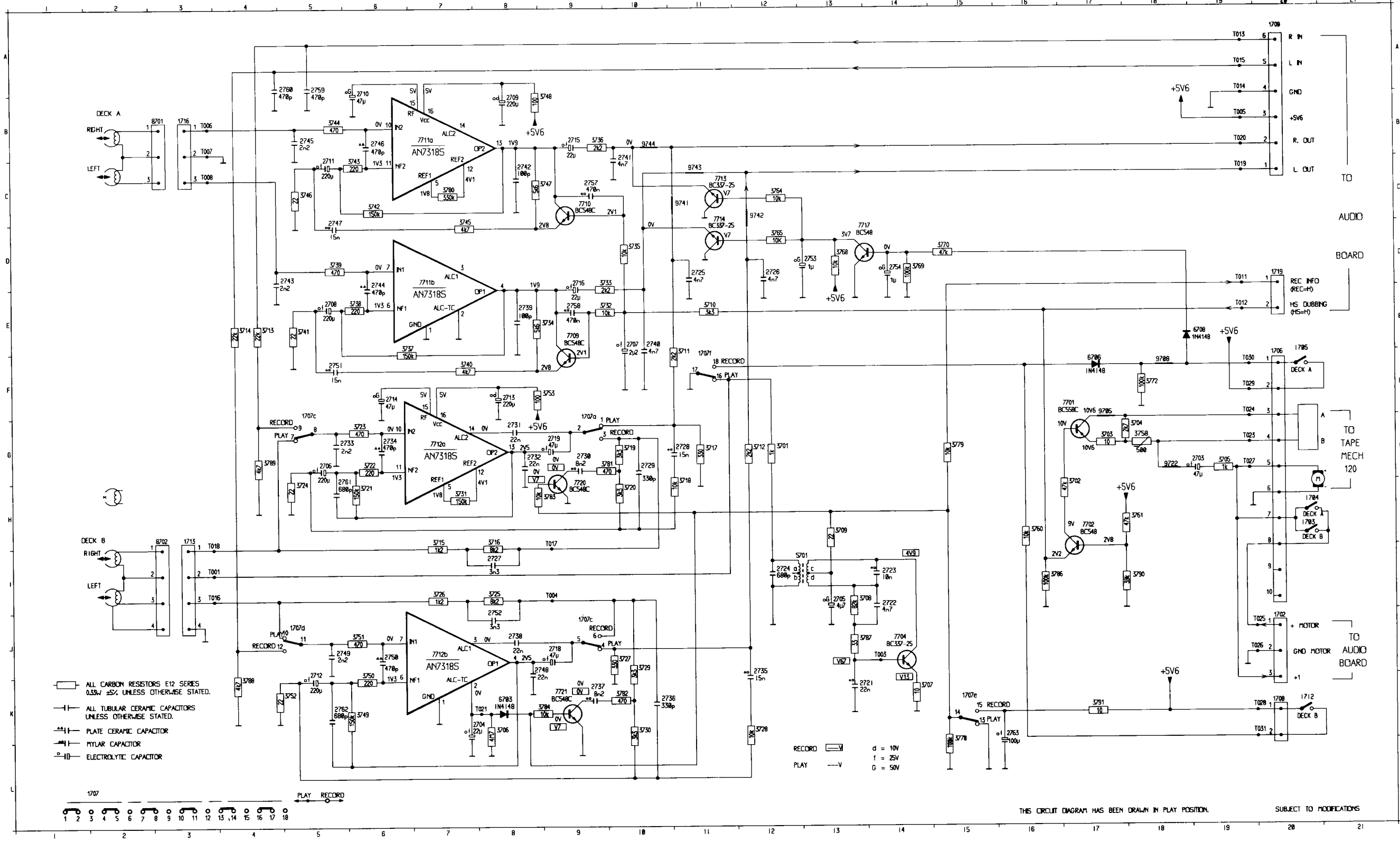
AUDIO BOARD - CIRCUIT DIAGRAM

1000a J20	1255 D19	1400a B 4	1784 H20	2255 B17	2262 E15	2305 I15	2400 F11	2518 B11	2568 C 7	2590 D 9	2595 H14	3306 E13	3403 F11	3411 F12	3530 C 5	3593 B 7	3595 F 2	3511 B 5	6303 J17	7250 I15	7401 C13	8261b K20	1005 B 4	T012 B18	T019 C 2	T026 F 2	T033 I 2	T048 J15	T047 F12	
1000b J21	1257 B20	1400b A 4	1785 F 2	2256 E14	2263 E15	2306 I13	2401 F10	2519 B10	2571 D 7	2570 H15	3596 G 2	3596 G 2	3661 D 8	6304 J13	7251 H14	7402 F18	8262a L20	1006 C 4	T013 D18	T020 C 2	T027 F 2	T034 I 3	T049 B15	T014 B19	T021 C 2	T029 F 2	T035 I 3	T049 B15	T048 J15	T047 F12
1000c J19	1302 I18	1505a D18	2251 B17	2258 D15	2301 J16	2310 I11	2404 F10	2516 D 9	2577 F 11	2577 F 11	3597 D 8	3597 D 8	3598 B 8	6305 J14	7252 H12	7513 C 7	8262b L21	1007 A 2	T014 B19	T021 C 2	T029 F 2	T035 I 3	T049 B15	T015 B19	T022 C 2	T030 F 2	T037 H11	T044 F 9	T051 A 7	
1100 F20	1303 J18	1505b D18	2252 E17	2259 C15	2302 J17	2312 I15	2406 F13	2516 D 9	2578 C 4	2578 C 4	3598 B 8	3598 B 8	3599 I 4	6306 J16	7253 E14	7514 C 8	8263a K21	1008 B 2	T015 B19	T022 C 2	T029 F 2	T035 I 3	T049 B15	T016 A 2	T023 H19	T030 F 2	T037 H11	T044 F 9	T051 A 7	
1200 H 2	1304 J18	1505 C19	2253 C17	2260 D13	2303 J17	2400 F 9	2516 D 9	2578 C 4	2578 C 4	2578 C 4	3599 I 4	3599 I 4	3600 B 9	6307 J17	7254 H13	8264 J19	1009 A 4	T009 B 5	T016 A 2	T023 H19	T030 F 2	T035 I 3	T049 B15	T018 C12	T024 C 2	T031 G 2	T037 H11	T044 F 9	T051 A 7	
1201 F20	1400a H15	1703 A 2	2254 D17	2261 C13	2304 J18	2401 F10	2517 C 9	2579 C 8	2579 C 8	2579 C 8	3595 C14	3402 F10	3403 F10	6405 J17	7400 D13	8261a K21	1004 A 4	T011 D12	T018 B 2	T025 G15	T032 H 2	T039 H15	T048 J15	T019 B 2	T025 G15	T032 H 2	T039 H15	T048 J15	T051 A 7	



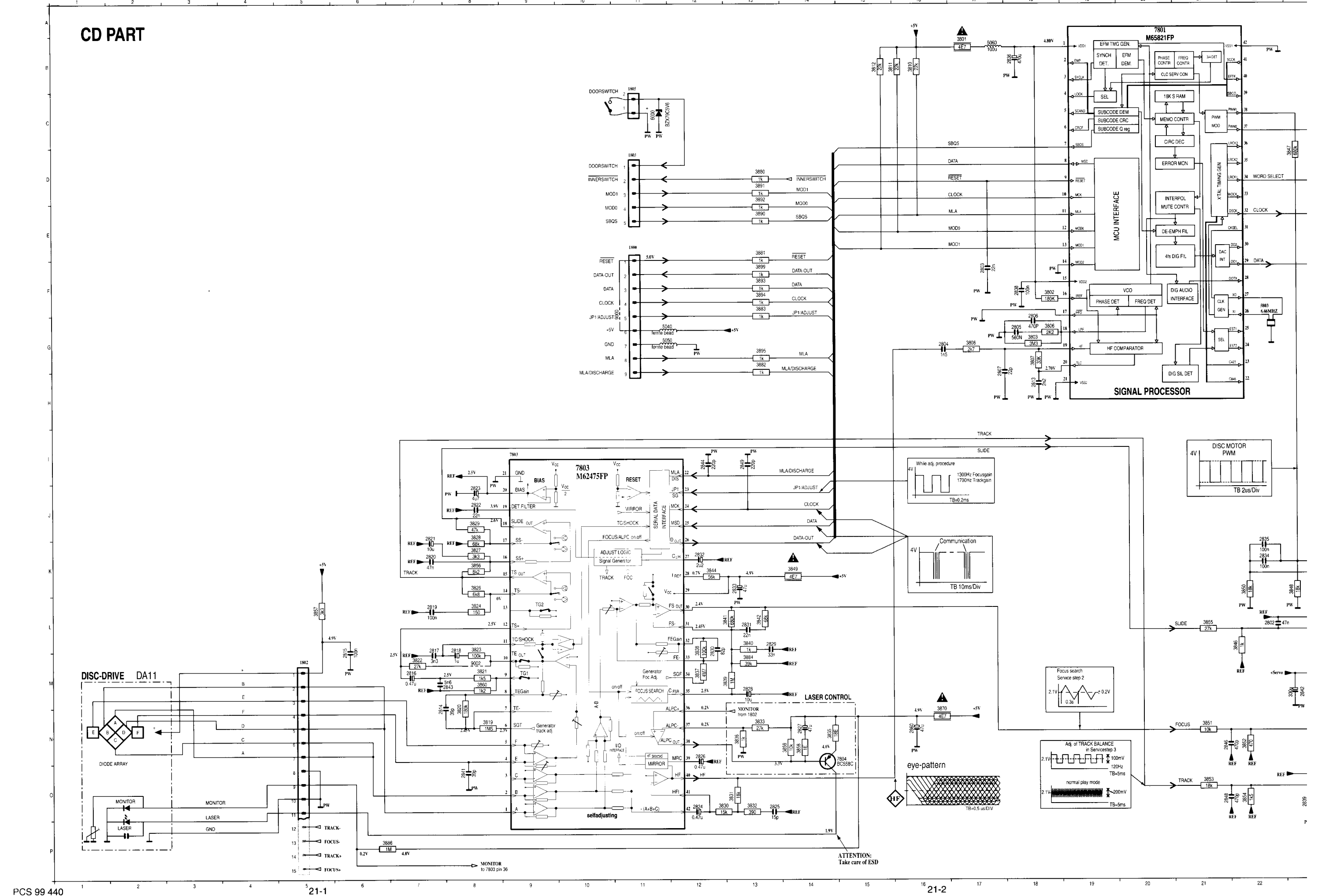
TAPE BOARD - CIRCUIT DIAGRAM (MTF)

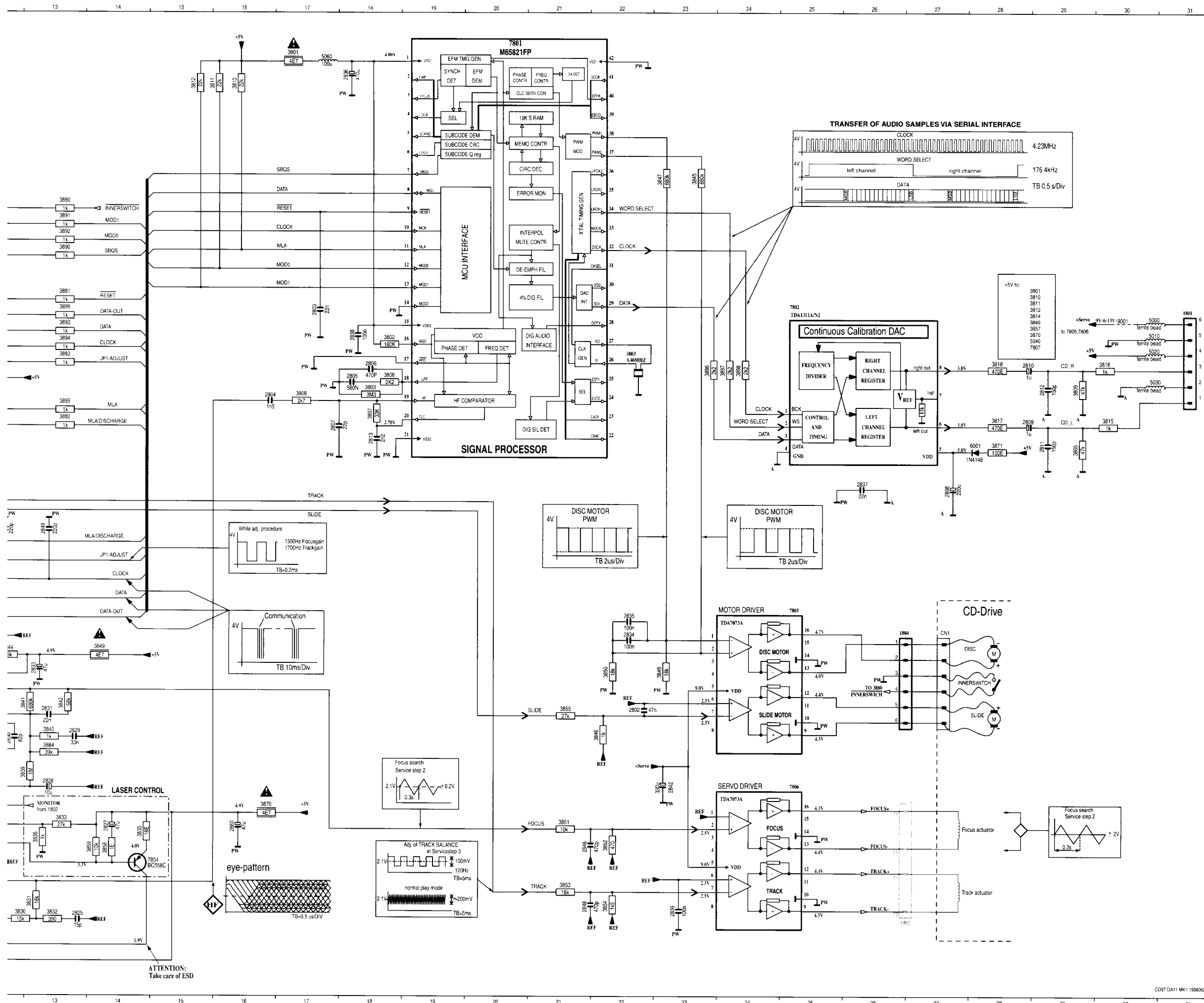
1780	J20	1787	J 9	1713	H 3	2787	E10	2714	F 6	2723	I14	2730	G 6	2737	K 9	2744	D 6	2751	F 5	2768	A 5	3784	G18	3711	F11	3718	H11	3725	I 7	3732	E18	3739	D 5	3746	C 5	3753	F 9	3769	D14	3782	K18	3790	I18	7702	H17	7712	J 7	9742	H 3	9744	B18	1008	C 3	1017	H 9	1025	J19
1783	H20	1787	J 9	1716	B 3	2790	E10	2715	B 9	2724	I12	2731	G 6	2738	K 9	2745	B 5	2752	J 6	2769	A 5	3785	G18	3712	F12	3719	H10	3726	I 7	3733	E18	3740	D 5	3747	C 5	3754	F 9	3770	D15	3783	K 9	3791	K17	7704	J14	7713	C11	9745	F17	1001	I 3	1011	D19	1018	H 3	1026	J19
1784	H20	1787	J 9	1719	D20	2793	E10	2718	B 9	2727	D11	2734	G 6	2741	K 9	2748	B 5	2755	D13	2772	A 5	3786	G18	3713	F13	3720	H10	3727	J10	3734	E18	3741	D 5	3748	C 5	3755	F 9	3771	D15	3784	K 9	3792	K17	7705	J14	7714	C11	9746	F17	1002	I 3	1012	E19	1019	C19	1027	G19
1785	F20	1787	F11	1783	G19	2710	A 6	2719	J 6	2728	I11	2735	G 6	2742	K 9	2749	J 5	2756	D14	2773	A 5	3787	K18	3714	F14	3721	H10	3728	J10	3735	E18	3742	D 5	3749	K 6	3756	F 9	3772	D15	3785	K 9	3793	K17	7706	J14	7715	C11	9747	F17	1003	I 3	1013	A19	1020	B19	1028	K19
1786	F20	1788	K20	2784	K18	2711	C 6	2720	F 6	2729	I11	2736	G 6	2743	K 9	2750	J 5	2757	D14	2774	A 5	3788	K18	3715	F15	3722	H10	3729	J10	3736	E18	3743	D 5	3750	J 6	3757	F 9	3773	D15	3786	K 9	3794	K17	7707	J14	7716	C11	9748	F17	1004	I 3	1014	A19	1021	K 7	1029	F19
1787	G 9	1706	K20	2785	I13	2712	J 6	2721	K13	2730	I14	2737	G 6	2744	K 9	2751	J 5	2758	D14	2775	A 5	3789	K18	3716	F16	3723	H10	3730	J10	3737	E18	3744	D 5	3751	J 6	3758	F 9	3774	D15	3787	K 9	3795	K17	7708	J14	7717	C11	9749	F17	1005	I 3	1015	A19	1022	G19	1030	F19
1787	F 5	1712	K20	2786	G13	2713	J 6	2722	I14	2731	K13	2738	G 6	2745	K 9	2752	J 5	2759	D14	2776	A 5	3790	K18	3717	F17	3724	H10	3731	J10	3738	E18	3745	D 5	3752	J 6	3759	F 9	3775	D15	3788	K 9	3796	K17	7709	J14	7718	C11	9750	F17	1006	I 3	1016	A19	1023	G19	1031	K19



CD97 (DA11 MK I) - CIRCUIT DIAGRAM

CD PART





- 1300 E29
- 1800 E11
- 1801 F31
- 1802 Q 5
- 1803 D11
- 1804 K26
- 1805 D 8
- 2802 L22
- 2803 F17
- 2804 G16
- 2805 G18
- 2806 G18
- 2807 G17
- 2808 K27
- 2809 G28
- 2810 G28
- 2811 H29
- 2812 G28
- 2813 H18
- 2814 M 7
- 2815 L 6
- 2816 M 7
- 2817 L 7
- 2818 L 8
- 2819 L 7
- 2820 K 7
- 2821 J 7
- 2822 J 8
- 2823 J 8
- 2824 O12
- 2825 O13
- 2826 N12
- 2827 N14
- 2828 M13
- 2829 L13
- 2830 L12
- 2831 L13
- 2832 K12
- 2833 K13
- 2834 K22
- 2835 K22
- 2836 B18
- 2837 H26
- 2838 F18
- 2839 O23
- 2841 O 8
- 2842 M23
- 2843 M 7
- 2844 I12
- 2846 N21
- 2848 O21
- 2849 I13
- 2850 O14
- 2851 M16
- 2855 M 7
- 3801 B17
- 3802 F18
- 3803 G18
- 3805 H29
- 3806 G18
- 3807 G18
- 3808 G17
- 3809 G28
- 3810 B16
- 3811 B16
- 3812 B15
- 3815 G30
- 3816 G30
- 3817 G28
- 3818 G28
- 3819 N 8
- 3820 M 8
- 3821 M 8
- 3822 L 7
- 3823 L 8
- 3824 L 8
- 3826 K 8
- 3827 K 8
- 3828 J 8
- 3829 J 8
- 3830 O12
- 3831 O13
- 3832 O13
- 3833 N13
- 3835 N14
- 3836 N13
- 3837 M12
- 3838 L12
- 3839 M13
- 3840 L13
- 3841 L13
- 3842 L13
- 3844 K12
- 3845 D23
- 3846 L22
- 3847 D23
- 3848 K23
- 3849 K14
- 3850 M22
- 3851 N21
- 3852 N22
- 3853 O21
- 3854 O22
- 3855 L21
- 3856 K 8
- 3857 L 5
- 3858 N14
- 3859 N14
- 3860 M 8
- 3870 N16
- 3871 H28
- 3880 D13
- 3881 E13
- 3882 G13
- 3883 F13
- 3884 M13
- 3886 P 6
- 3888 M 8
- 3889 L 8
- 3890 E13
- 3891 D13
- 3892 D13
- 3893 F13
- 3894 F13
- 3895 G13
- 3896 G23
- 3897 G24
- 3898 G24
- 3899 F13
- 5000 F30
- 5010 F30
- 5020 F30
- 5030 G30
- 5040 G11
- 5050 G11
- 5060 A18
- 5803 F22
- 6000 E11
- 6001 H28
- 7801 A19
- 7802 F25
- 7803 I 9
- 7804 N14
- 7805 J25
- 7806 M25
- 9000 F10
- 9001 F29
- 9002 M 8