

SERVICE GUIDE

KYESYSTEMS CORP.



Revision History

[illegible]

Table of Contents

Revision History	2
Table of Contents	3
Getting Started	4
Conventions Used in this Guide	4
Safety Precautions	4
Chapter 1. How to Handle Defective Returns.....	5
1.1 Speaker no sound	
1.2 Display no function	
1.3 Remote control no function	
Chapter 2. Specifications	10
Chapter 3. Block Diagram	11
Chapter 4. Exploded View	12,13,14&15
Chapter 5. Part List	16
Chapter 6. Schematic Diagram	17
Chapter 7. Important Notes	18
7.1 Packing Requirement for Sending the PCB Assembly by Post	18
7.2 Short of Spare Parts while Repairing a Speaker System	18

Getting Started

Conventions Used in this Guide

Pay Special Attention : Instructions that are important to remember and may prevent mistakes .

Caution : Information that, if not followed, may result in damage to the product .

Safety Precautions

The following precautions should be observed in handling the speaker Described in this guide :

Place the speakers on a flat, level and stable surface.

Do not place the speakers in environments subject to mist, smoke, vibration, excessive dust, salty or greasy air, or other corrosive gases and fumes.

Do not drop or jolt the speakers.

Do not allow anything to drop into the subwoofer case through its ventilator, as it could result in fatal electric shock or fire .

Place the unit far enough from other equipments for good heat dissipation .

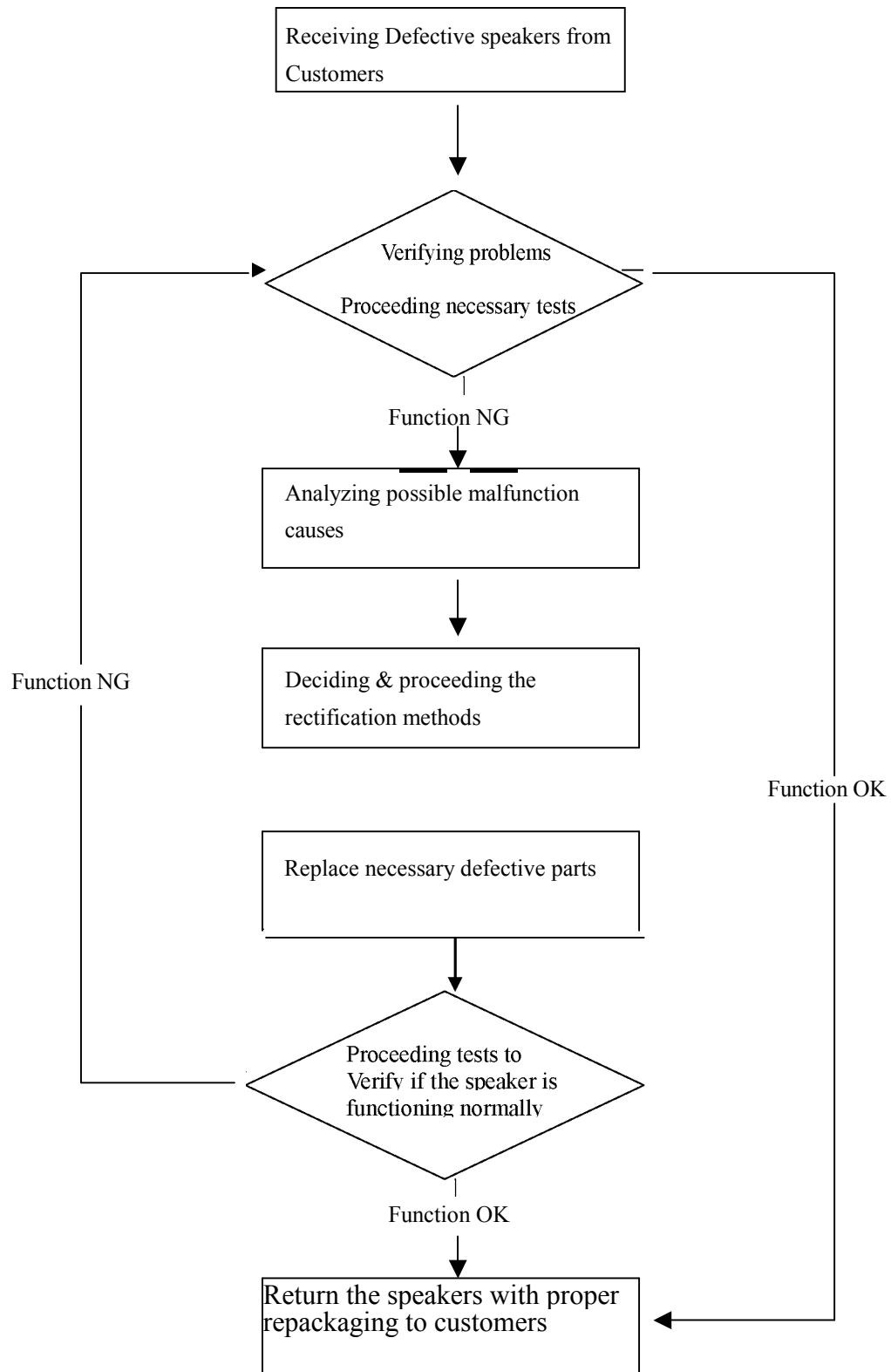
Disconnect the AC power cord from the AC outlet before performing any maintenance on the speakers .

Do not perform any maintenance with wet hand .

Prevent foreign substances, such as water, other liquids or chemicals , From entering the speakers while performing maintenance procedures on the speakers .

Chapter 1. How to Handle Defective Returns

Overview



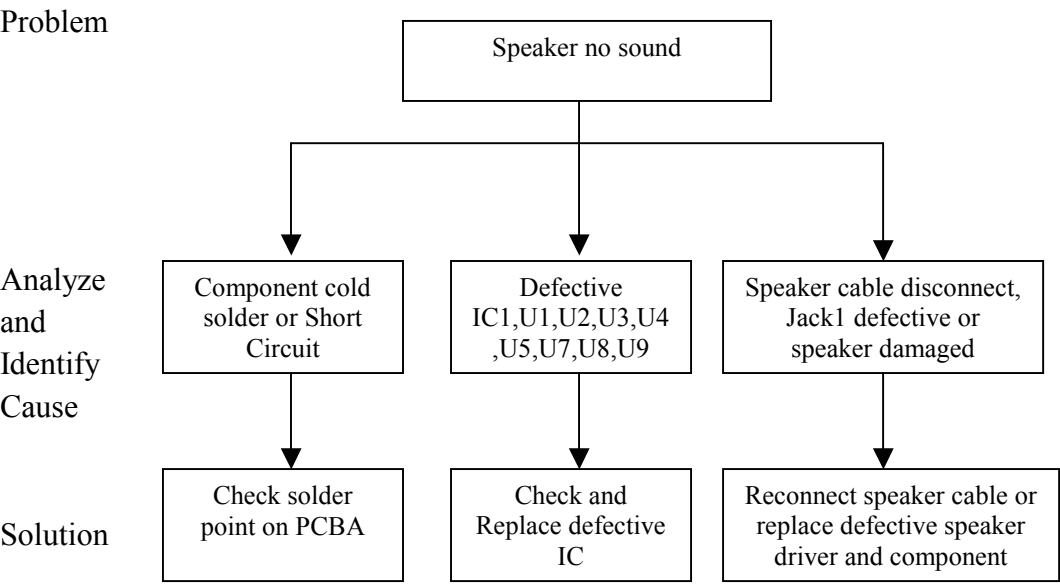
Problems

Item	Problem Description
1.1	Speaker no sound
1.2	Display no function
1.3	N0 Power
1.4	Remote control no function

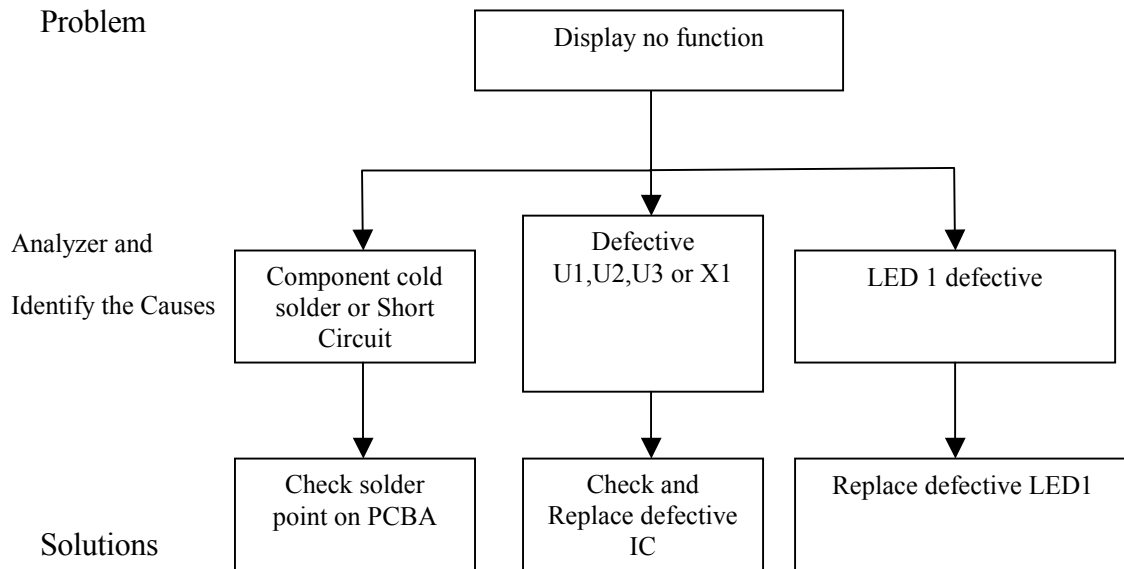
Attention

Please follow the numbered sequence marked within parenthesis given in individual Flow chat, in that this is the best-recommended sequence to rectify the problems.

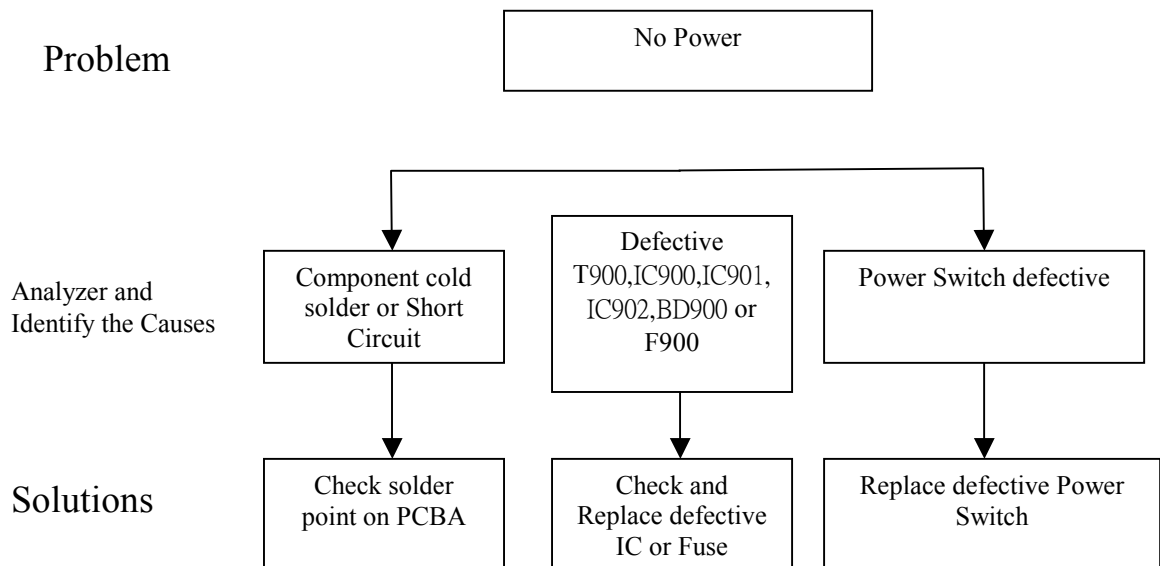
1.1 One or more channels no sound (Stereo in/DVD in jack no function)



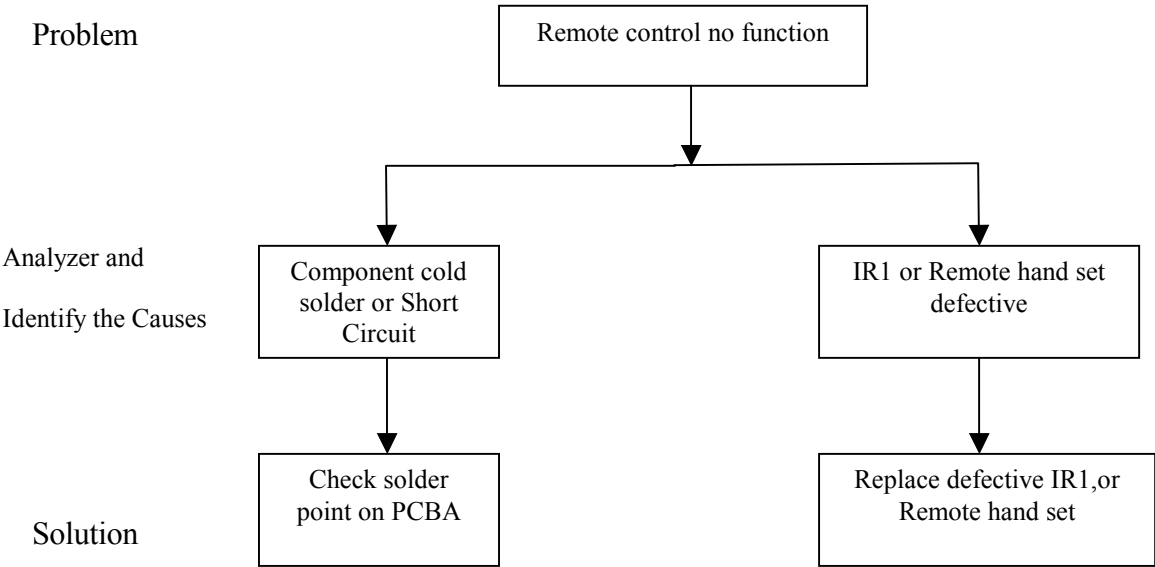
1.2 Display no Function



1.3 No Power



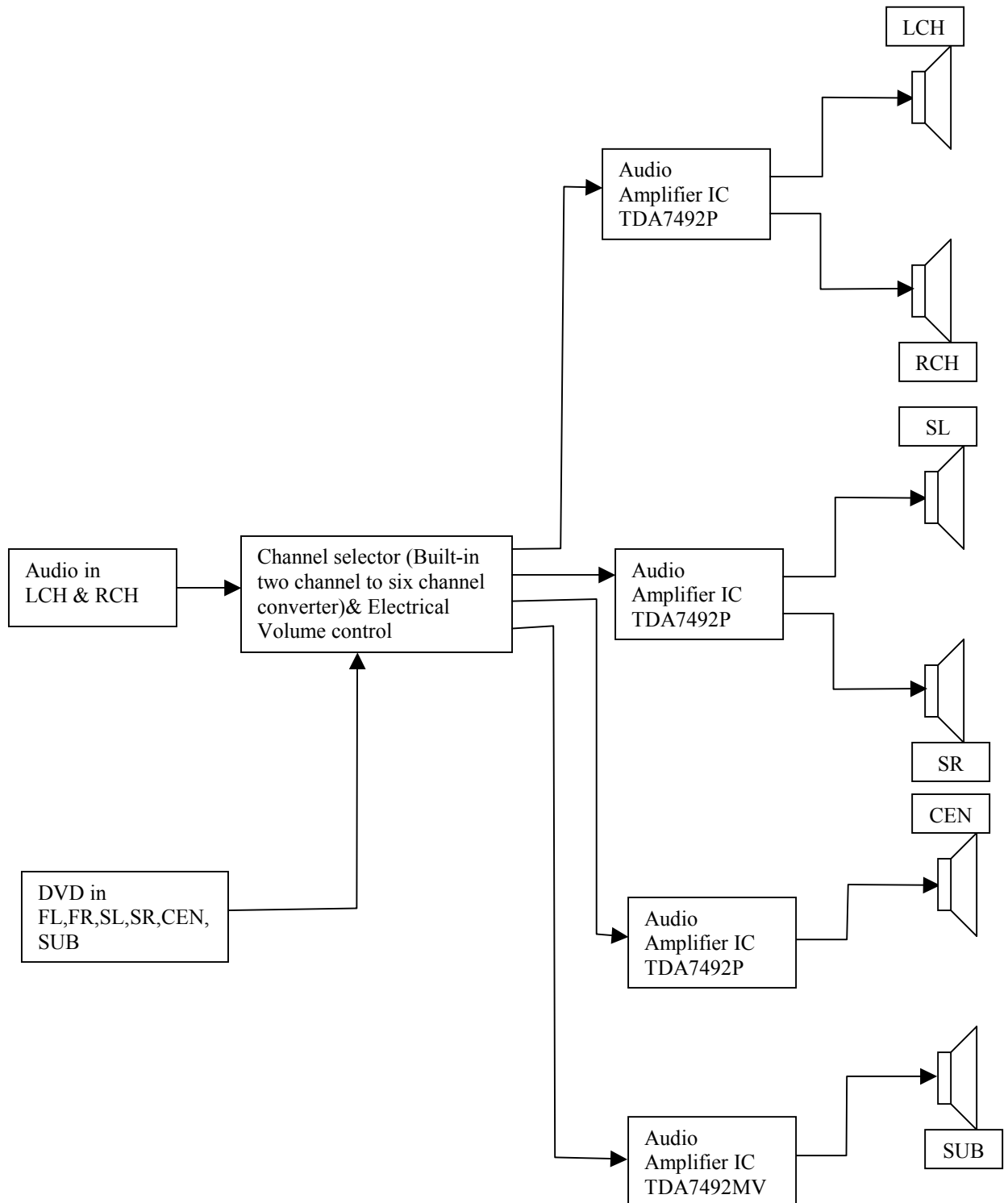
1.4 Remote control no function



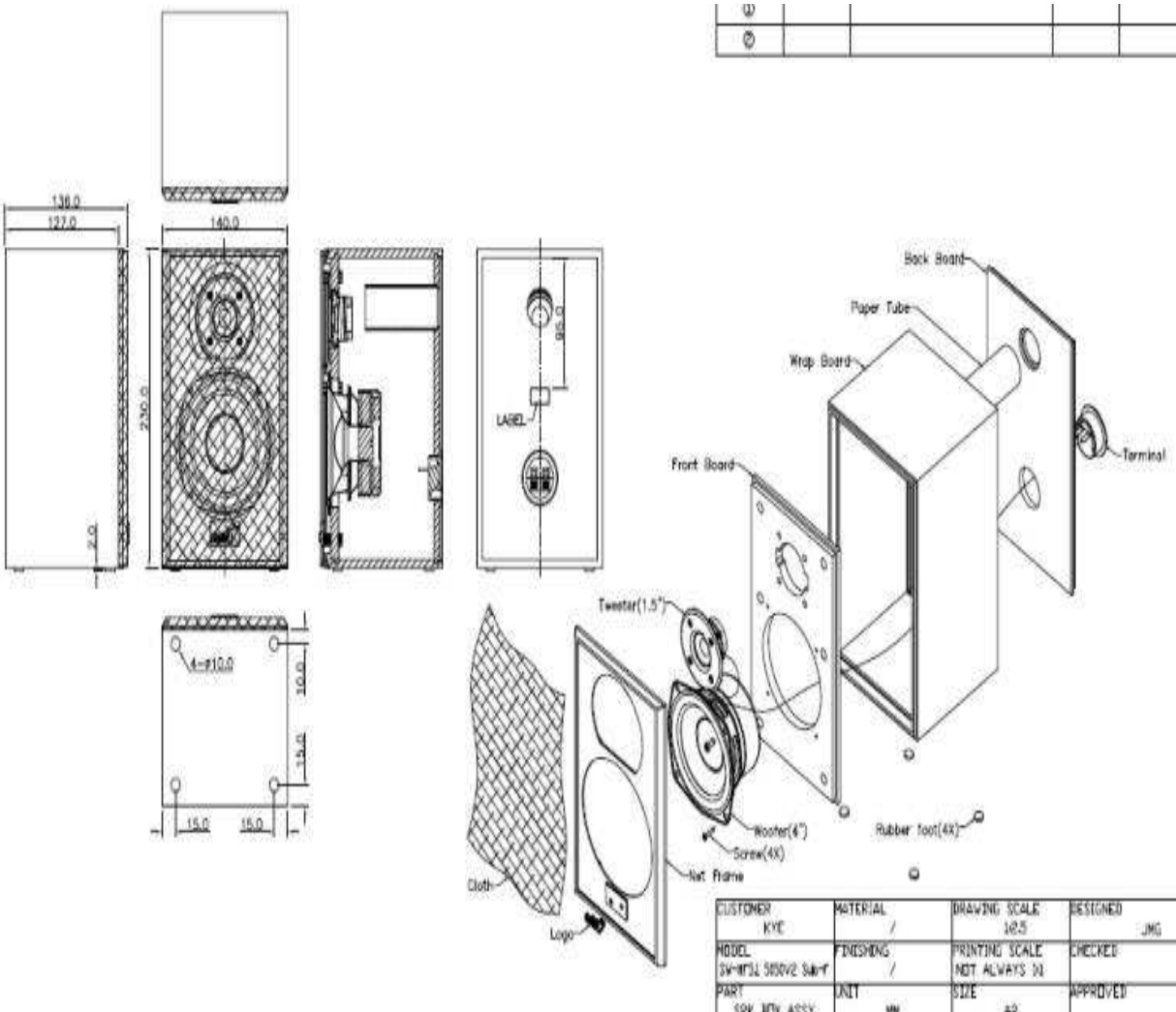
Chapter 2. Specifications

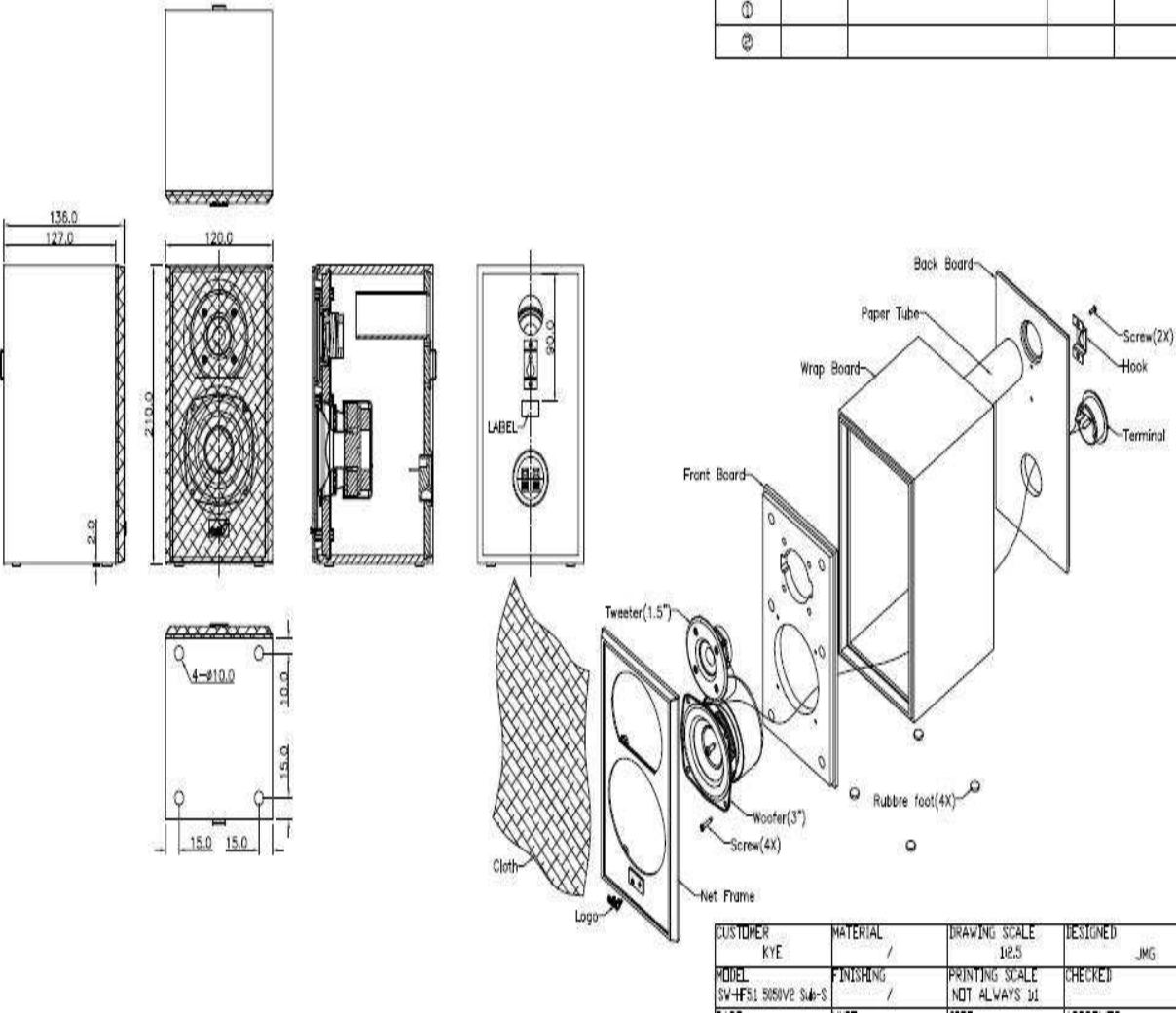
NO.	Description	Unit	Specifications
1	Out Power at THD 10%(Sub)	W	≥ 50
2	Out Power at THD 10%(Sat)	W	$\geq 20W$
3	Sensitivity(FR,FL,SR,SL)	mV	850 ± 85
4	Sensitivity(CEN)	mV	600 ± 60
5	Sensitivity(Sub)	mV	100 ± 30
6	Freq. Response (Sub)	Hz	$20 \sim 130 \pm 10\%$
7	Freq. Response (Sat)	Hz	$20 \sim 20K \pm 10\%$
8	Separation	dB	≥ 40
9	S/N ratio	dB	≥ 70
10	Hum & Noise (Vol.: max)	mV	≤ 2

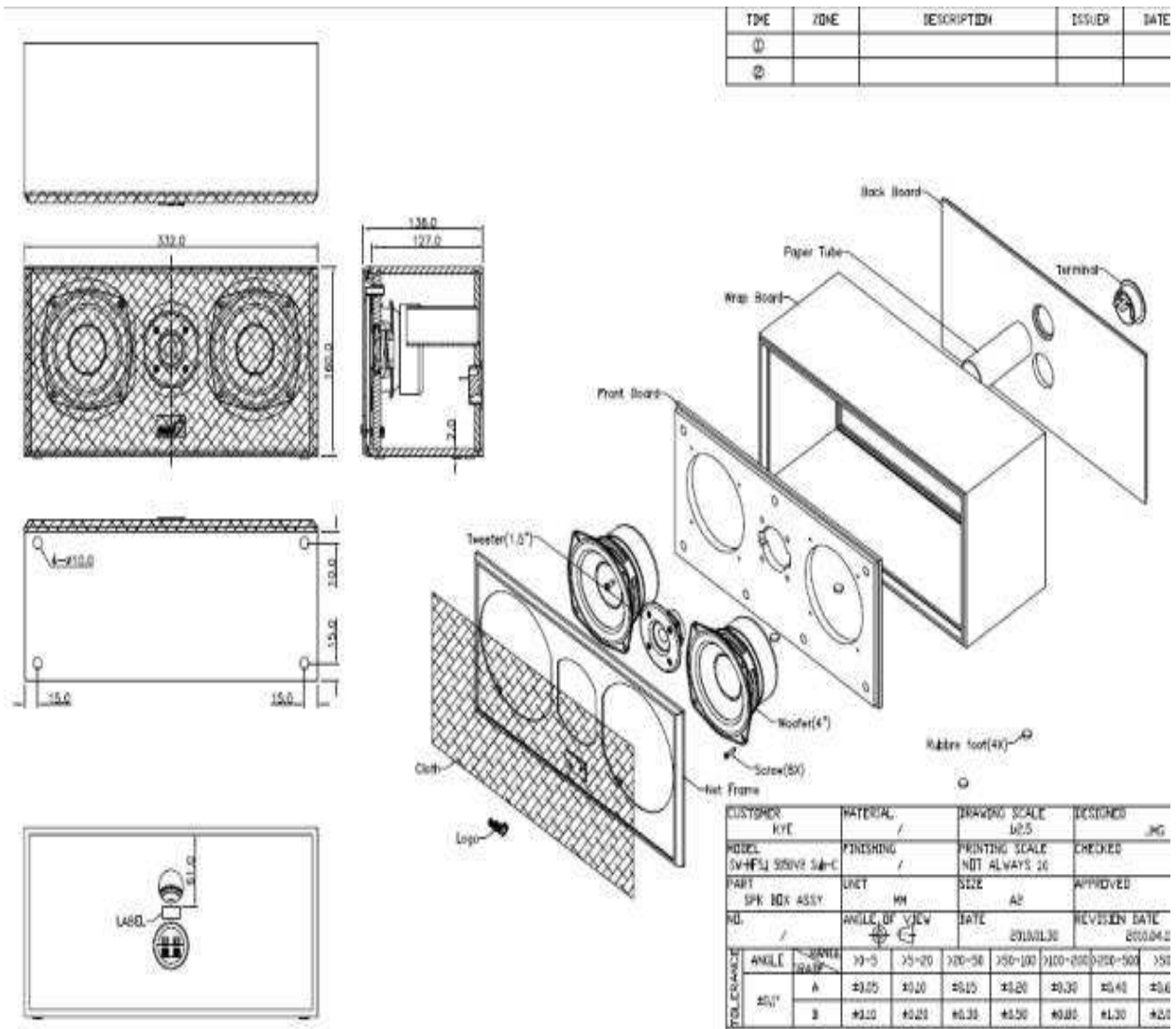
Chapter 3 Block Diagram



Chapter 4. Exploded View





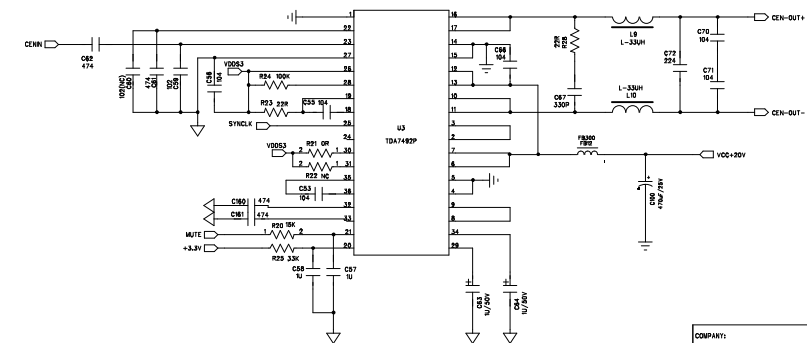
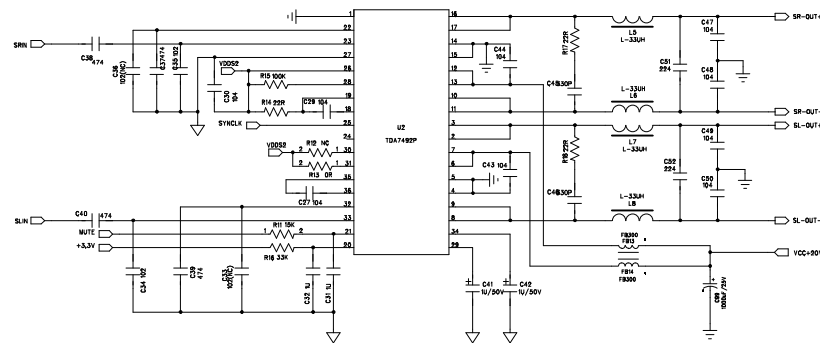
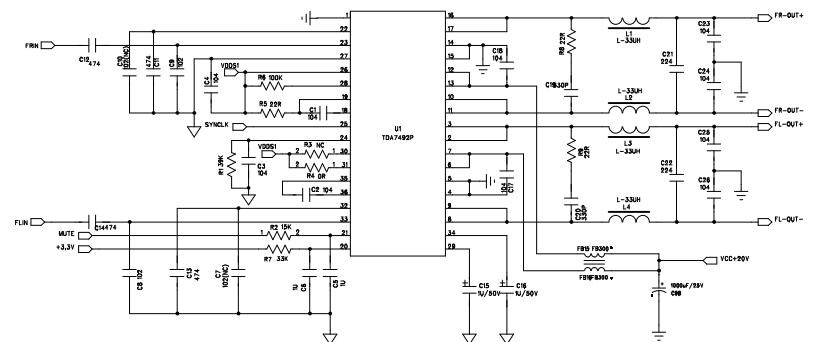
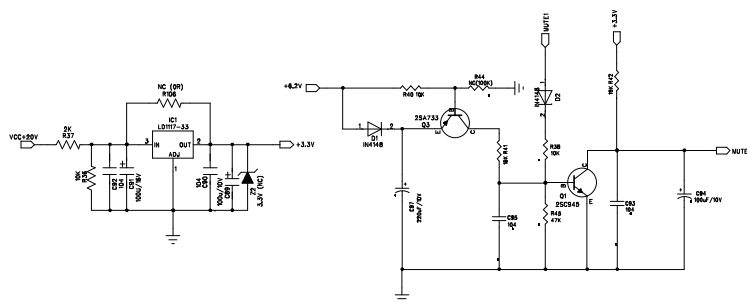
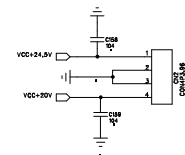
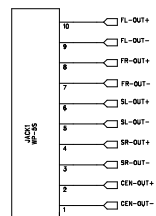
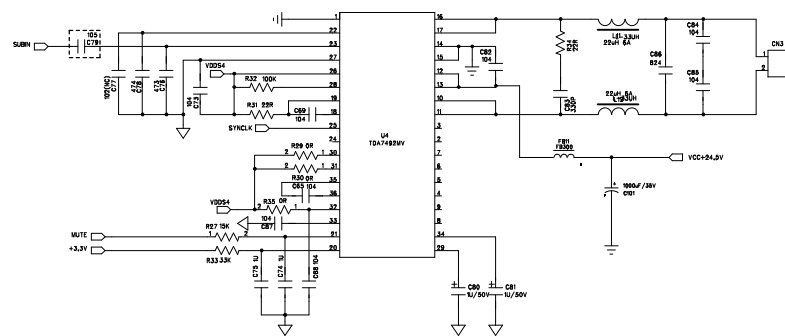


Chapter 5. Part List

No	DESCRIPTION	Qty	UNIT	Part No.
1	ICTDA7492P	3	U1,U2, U3	
2	IC-TOP260EN	1	IC900	
3	IC-EL817C-B	1	IC901	
4	ER35 Transformer	1	T900	
5	BD-KBU406 Rectifier	1	BD900	
6	ICM62429	3	U7,U8, U9	
7	TL431 IC	1	IC902	
8	ICALVT16175DL	1	U5	
9	ICRC4558	1	U6	
10	ICTDA7492MV	1	U4	
11	ICMCU(TMS4500)	1	U1	
12	ICSM1628	1	U2	
13	IC78L05 TO-92	1	U3	
14	POWER CORD 2P	1		VPE003012-006 0
15	SPK UNIT	1		FSB526065-680 4
16	RCA CABLE	1		VRC220001-001 0

Chapter 6. Schematic Diagram

Pls refer to The Attachment



DRAWN: Win.Long		DATED: 2010-04-30		COMPANY: KYE	
CHECKED:		DATED:		TITLE: 5.1CH_HF 5050V2	
QUALITY CONTROL:		DATED:		CODE:	SIZE: D
RELEASED:		DATED:		DRAWING NO: HF 5050V2	
				SCALE:	SHEET 1 OF 2

6

5

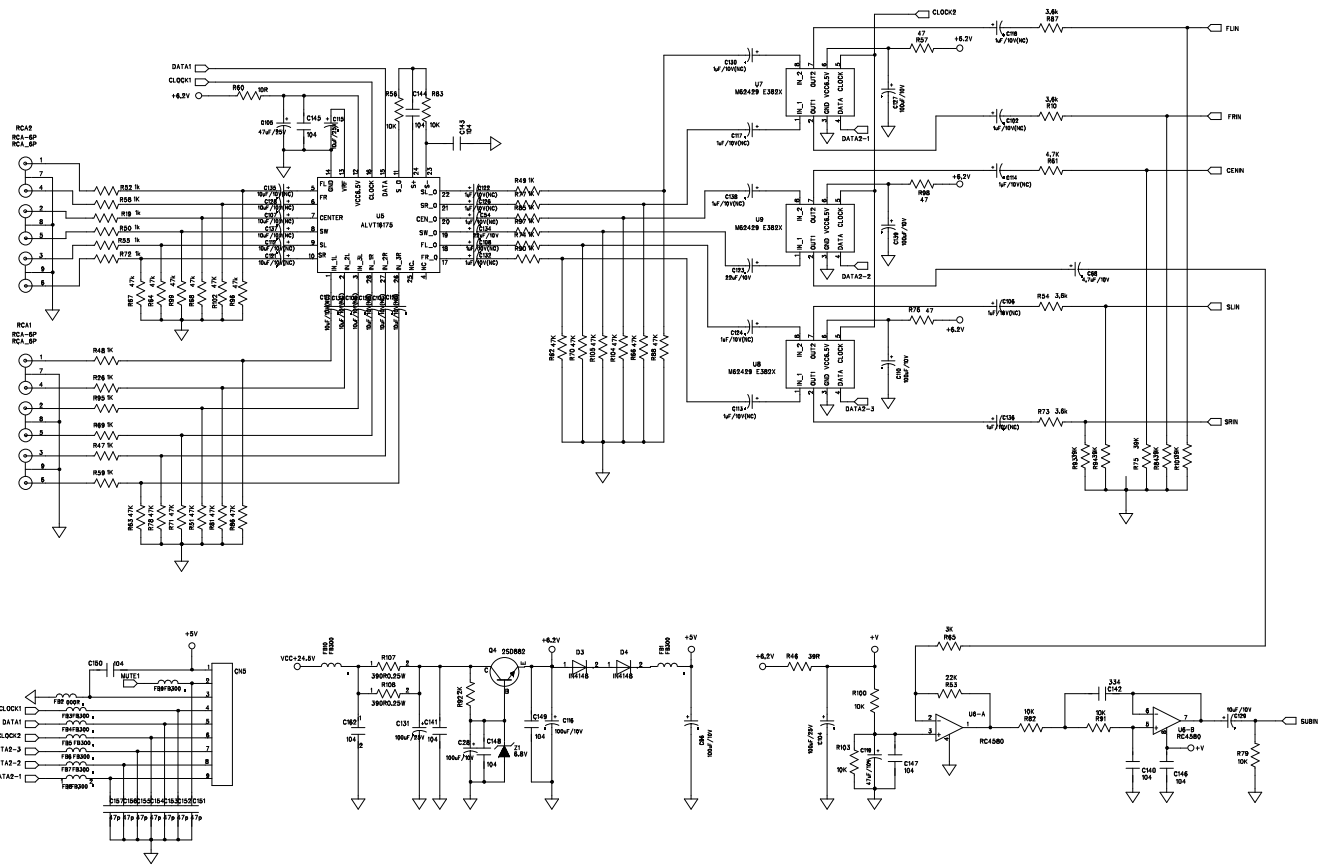
4

3

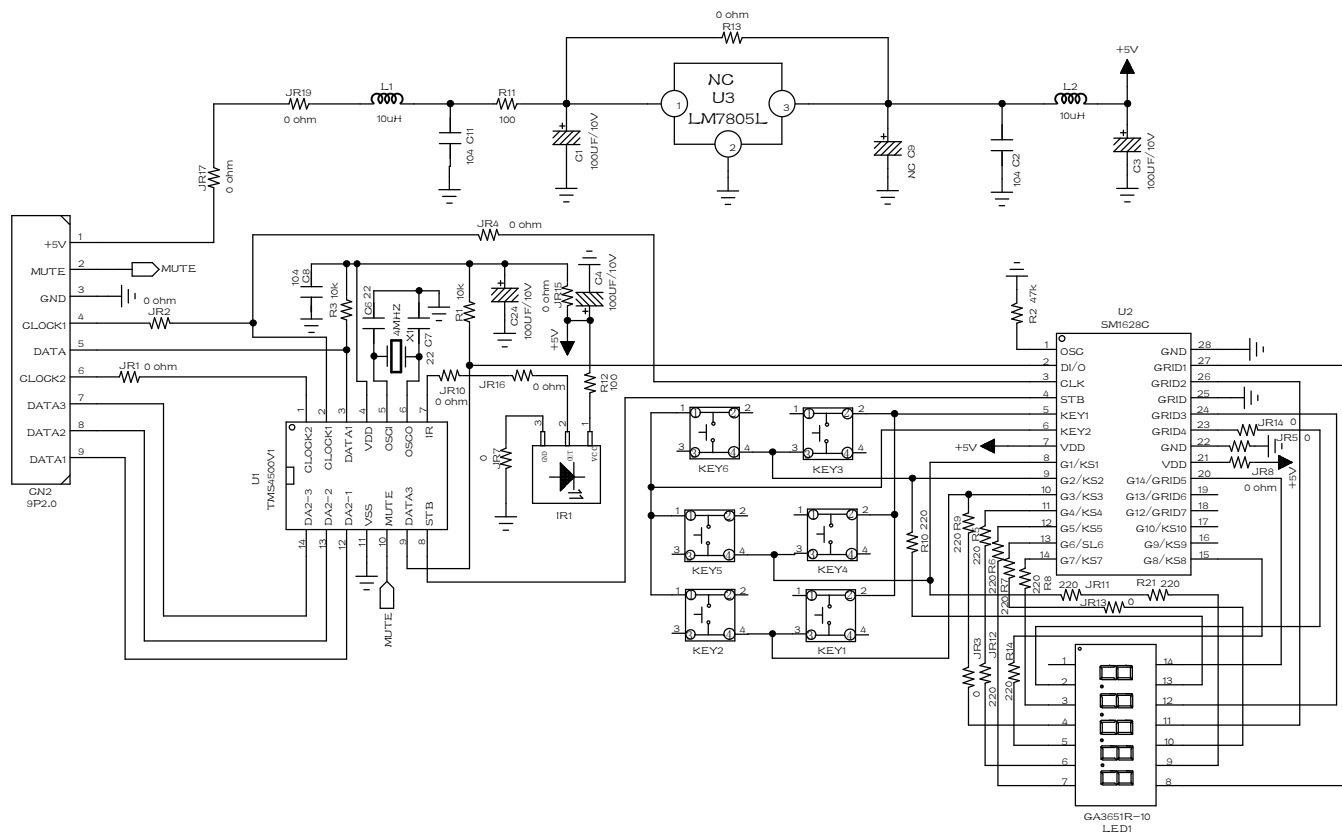
2

1

REVISION RECORD			
LTR	ECO NO.	APPROVED	DATE



COMPANY:		KYE	
TITLE:		5.1CH_HF5050V2	
DRAWN:	DATE:	CODE:	SIZE:
WinLong	2010-04-30		
CHECKER:	DATE:	DRAWING NO:	REV:
			A
QUALITY CONTROL:	DATE:		
RELEASED:	DATE:		
SCALE:		SHEET: 2 OF 2	



Chapter 7. Important Notes

7.1 Packing Requirement for Sending the PCB Assembly by Post

PCB assembly is a kind of sophisticated electronic circuit board. Well packing will be required when sending them by post.

* Some sophisticated IC components are mounted on the PCB assembly, hence it is necessary to pack each PCB assembly with a separate static protecting bag, in order to avoid static electricity.

* Reliable external packing is also very important when sending PCB assembly by post, in that it would avoid unnecessarily lost or damage.

7.2 Short of Spare Parts while Repairing a Speaker System

If you are short of spare parts when you have some speaker systems waiting to be repaired, it would be recommended to take the necessary parts from one speaker system, so that you may have the as many speaker systems.