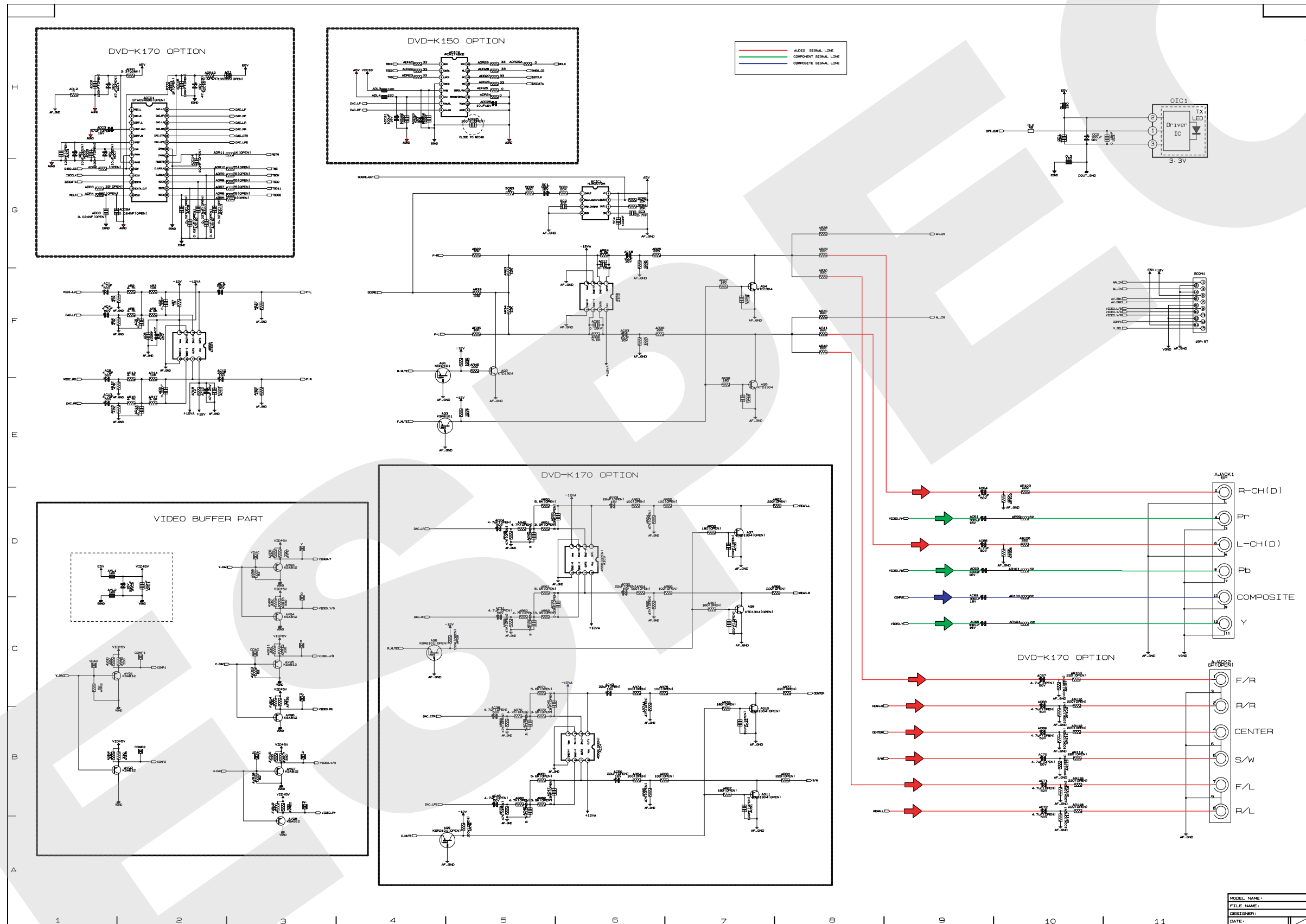
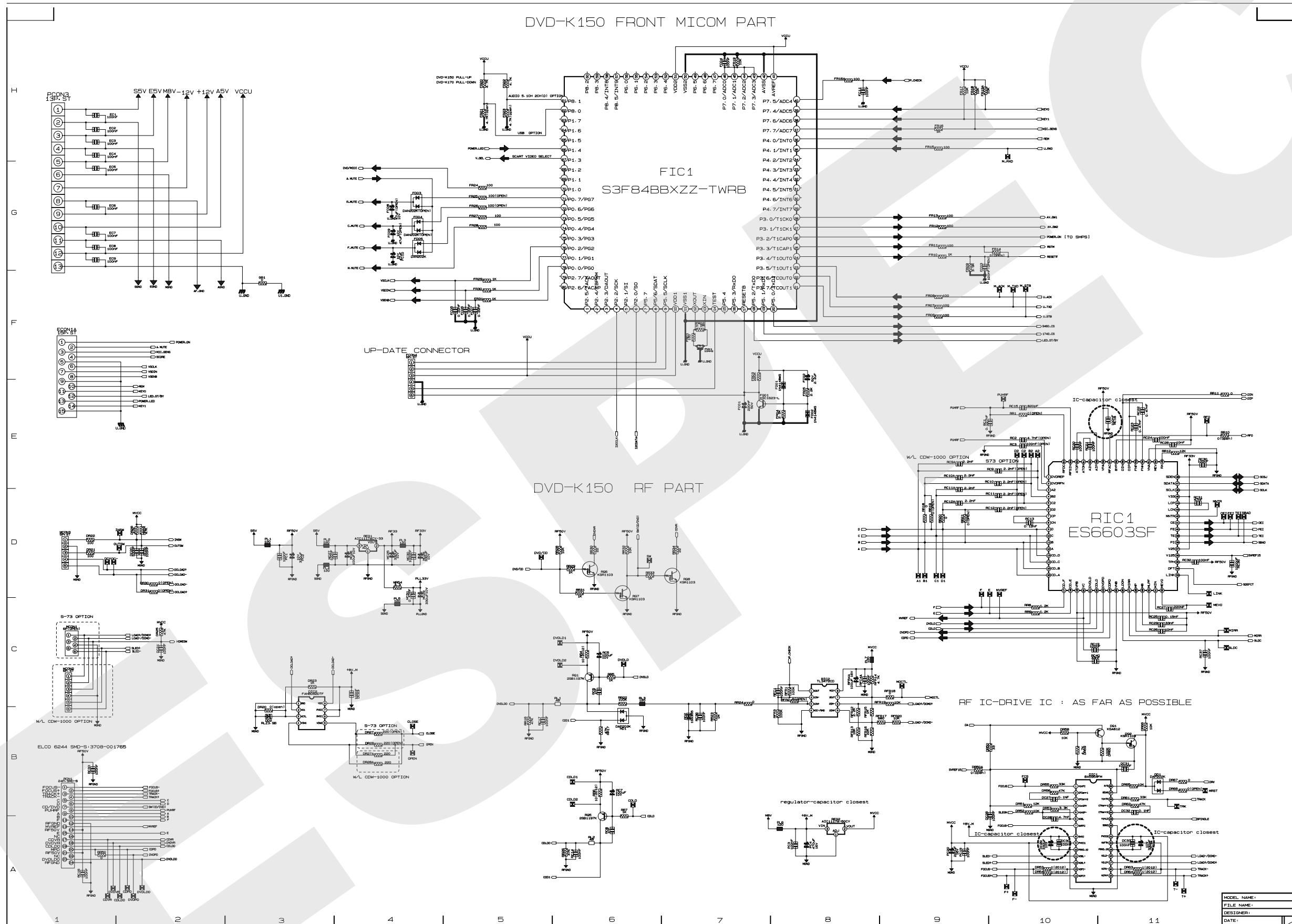


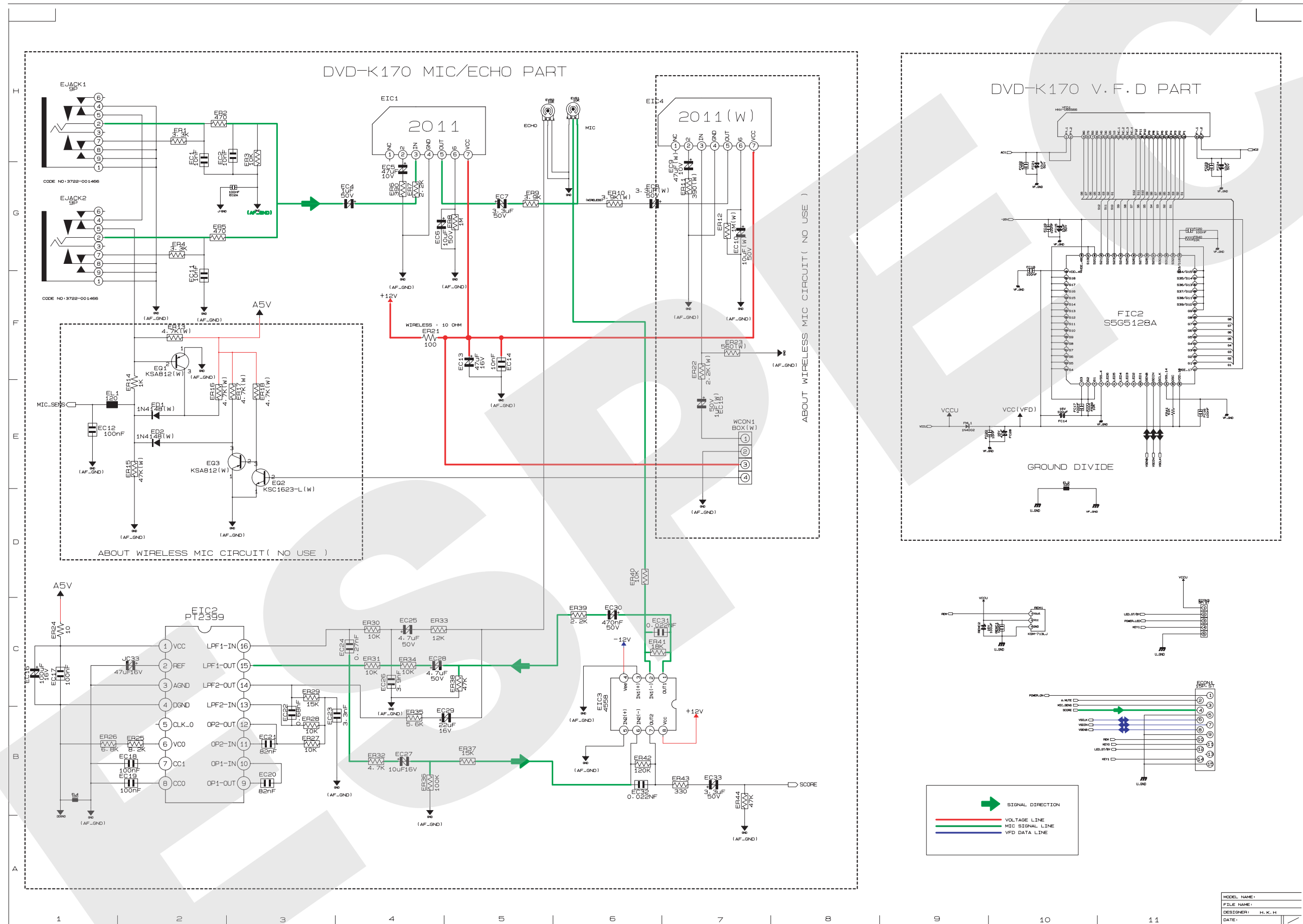
1. VIDEO

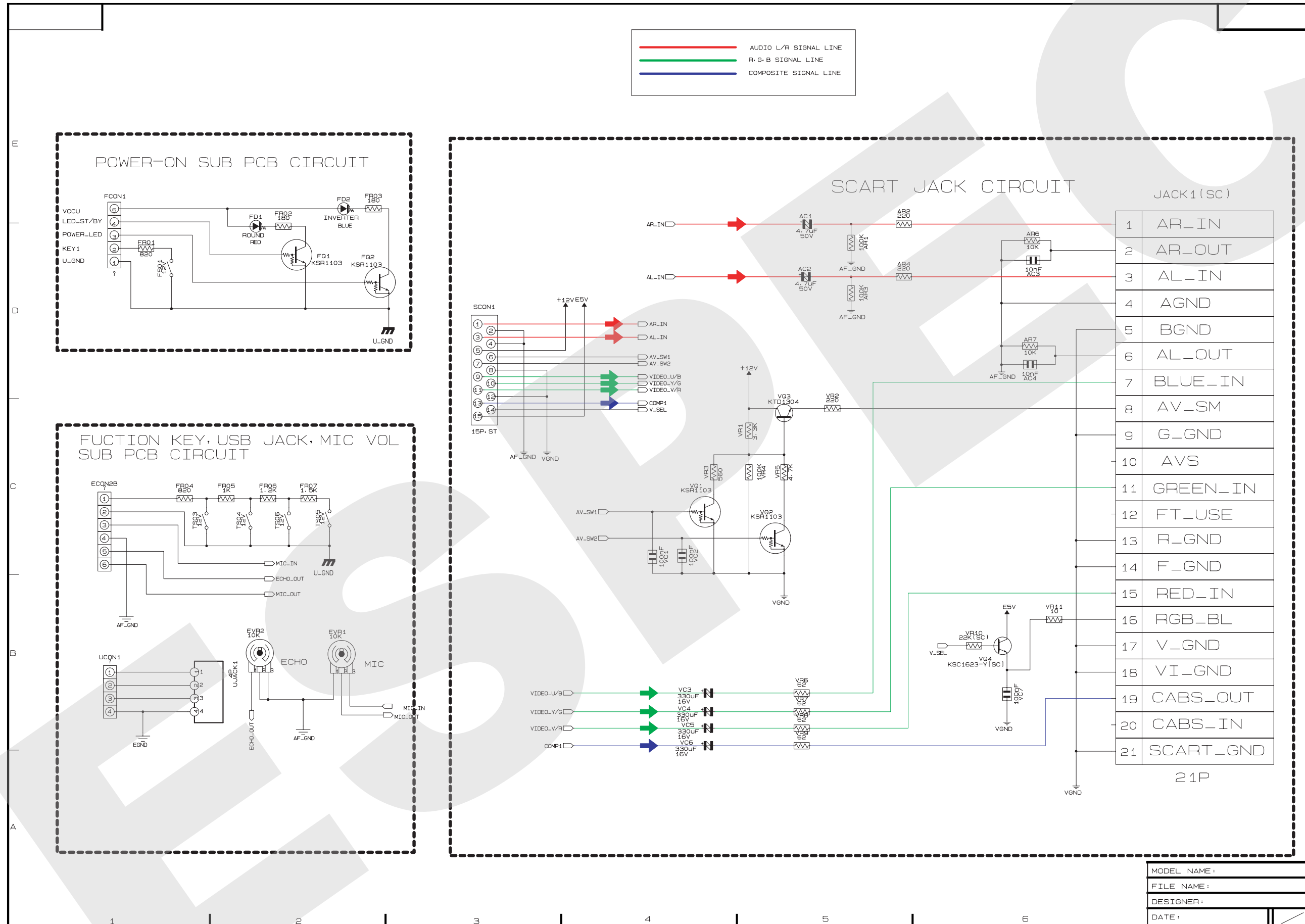






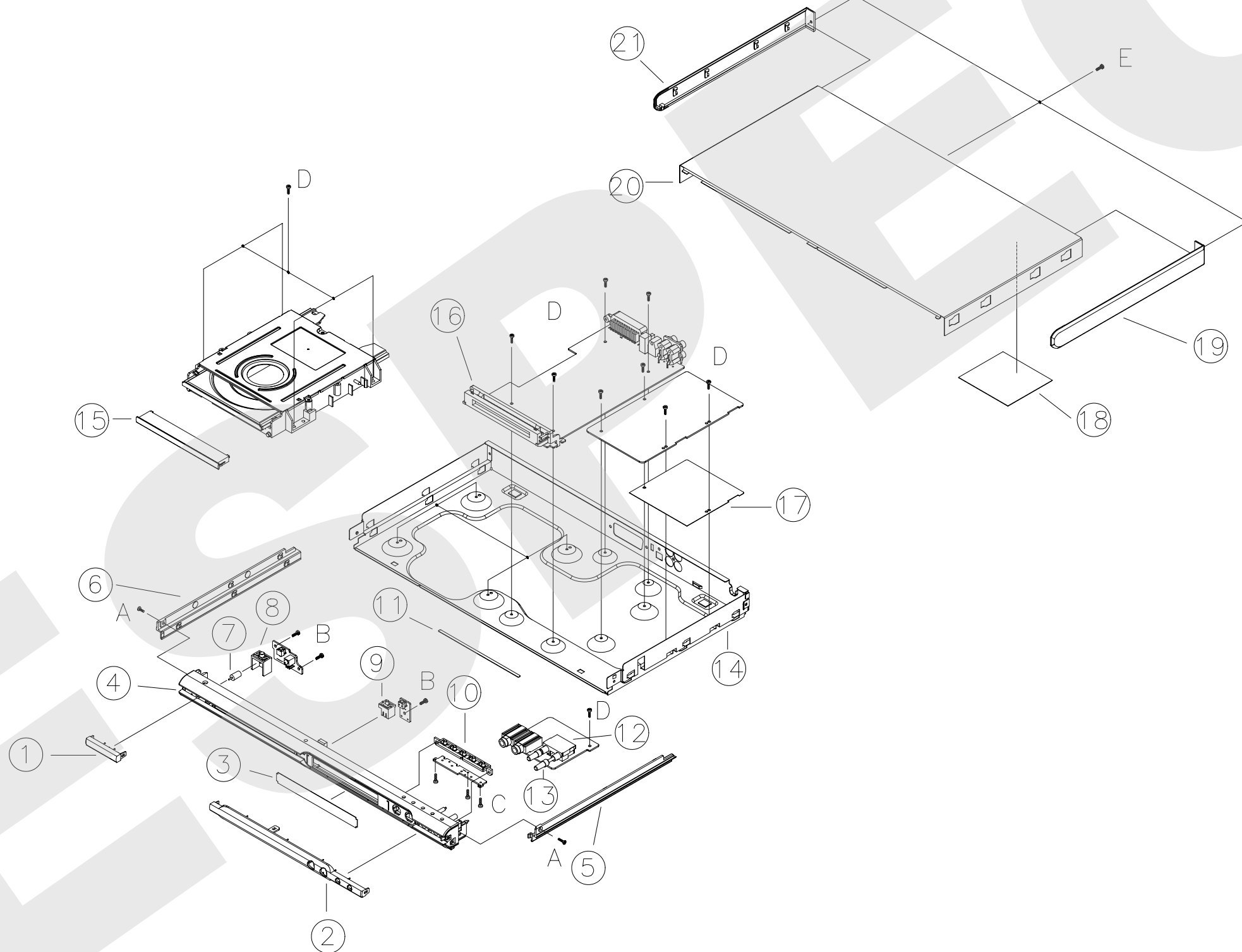






# 1.Exploded Views and Parts List

## 1-1 Total Exploded View

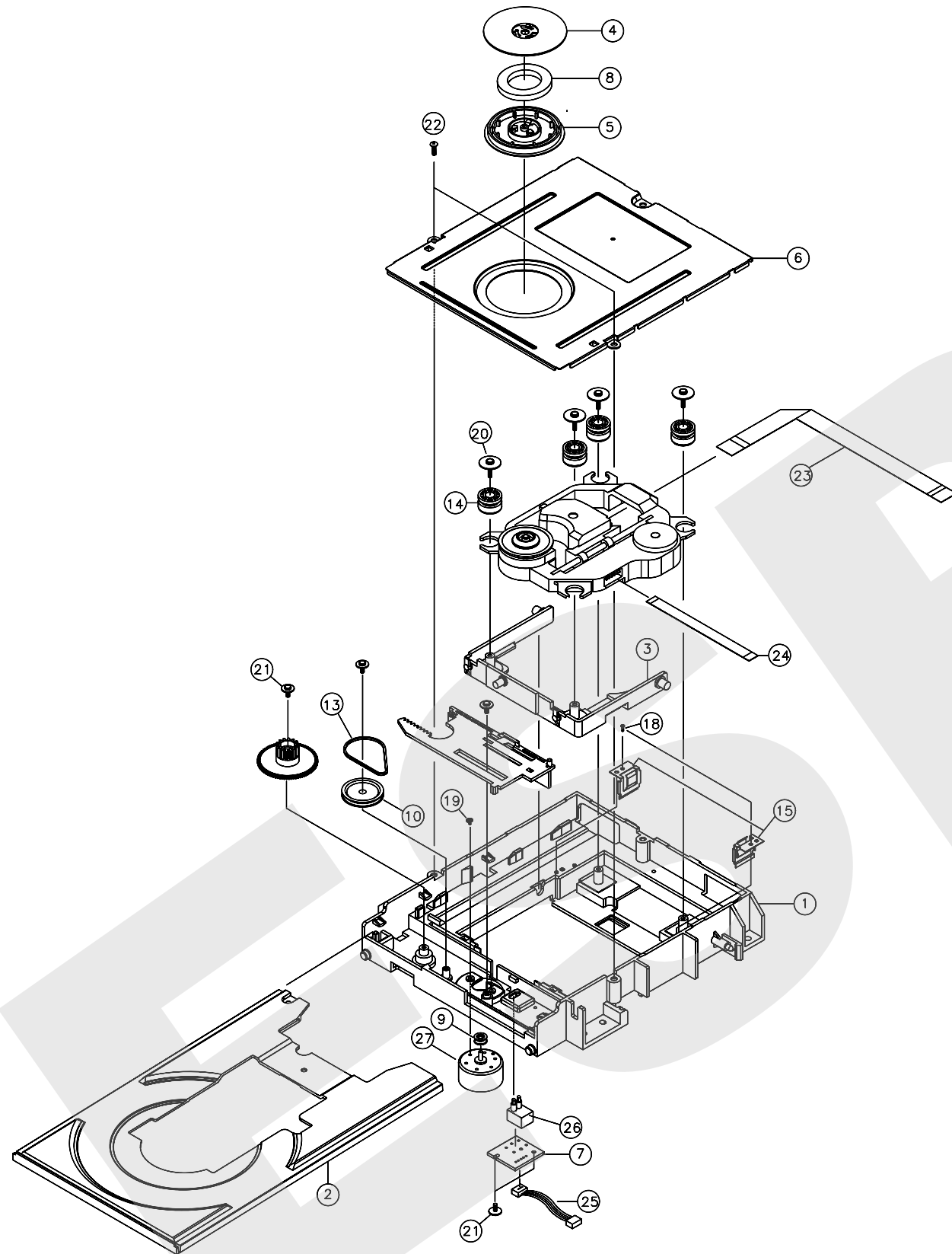


\* Parts List of Total Exploded view

No.	Code No.	Description	Specification	Q'ty	Remark
1	AH64-03184B	DECO-STAND BY	PMMA	1	
2	AH64-03185B	WINDOW-VFD	PMMA	1	
3	AH63-00875A	FILTER-VFD	PC 0.5T	1	
4	AH64-03178B	CABINET-FRONT	PC/ABS	1	
5	AH64-03181B	DECO-SIDE R B	ABS	1	
6	AH64-03180B	DECO-SIDE L B	ABS	1	
7	AH67-00201A	LENS-POWER	PMMA	1	
8	AH64-03189B	KNOB-POWER	ABS	1	
9	AH64-03188B	KNOB-OPEN	ABS	1	
10	AH64-03186B	KNOB-FUNCTION	ABS	1	
11	AH63-00892A	SHEET-VFD	PC 0.5T	1	
12	AH61-01766A	BRKT-JACK	SECC 0.6T	1	
13	AH64-03187B	KNOB-MIC	ABS	2	
14	AH64-03190B	CABINET-BOTTOM-REAER	SECC 0.6T	1	
15	AH64-03179B	DOOR-CD	ABS	1	
16	AH61-01765A	HOLDER-VFD	ABS	1	
17	AH63-00856A	SHEET-PCB	PC 0.5T	1	
18	AH63-00876A	SHEET-TOP	PC 0.5T	1	
19	AH64-03183B	DECO-SIDE R UP	ABS	1	
20	AH64-03191A	CABINET-TOP	SECC 0.5T	1	
21	AH64-03182B	DECO-SIDE L UP	ABS	1	
A	6002-000126	TAPTITE SCREW	FH + 3*10		
B	6003-001327	TAPTITE SCREW	RH + 2.6*12		
C	6003-001479	TAPTITE SCREW	BH + 1.7*4		
D	6003-001561	TAPTITE SCREW	BH + 3*6		
E	6003-000275	TAPTITE SCREW	BH + 3*10(BLK)		



# 1-2 DVD MECHA Exploded View and Parts list



No.	Code No.	Description ;	Specification	Q'ty
1	AH61-01741A	BASE-MAIN	ABS BLK	1
2	AH63-00695A	TRAY-DISK	ABS XR401 L/GRAY	1
3	AH66-00262A	LEVER-LIFT	ABS+GF20%	1
4	AH61-01742A	CLAMPER UPPER	POM WHT	1
5	AH61-01743A	CLAMPER-LOWER	POM WHT	1
6	AH61-01795A	HOLDER-BRKT	SECC 0.6T	1
7	AH41-00560B	PCB-SWITCH	22*21*1.6	1/500
8	3301-001760	MAGNET	130gf 3.5mm	1
9	AH66-00215A	PULLEY-MOTOR	POM WHT	1
10	AH66-00216A	GEAR-PULLEY	POM WHT	1
11	AH66-00217A	GEAR-TRAY	POM WHT	1
12	AH66-00261A	SLIDE-CAM	PC WHT	1
13	AH66-00219A	BELT-PULLEY	CR 1.2	1
14	AH73-00058A	RUBBER-CD	SILICON 35	4
15	AH61-01474A	SPRING DECK	SPCC	2
16	0205-001106	GREASE	PL-401	0.002
17	0205-001109	GREASE	DM-523	0.001
18	6003-001446	SCREW TAP	2*5	2
19	6001-001257	SCREW TAP	1.7*3	2
20	6003-000152	SCREW TAP	2*10	4
21	6003-001476	SCREW TAP	2*5(HEAD:D3.5)	5
22	6003-000283	SCREW TAP	3*8	2
23	3809-001630	FFC PICK UP	175 mm,24P,0.5m..	1
24	3809-001627	FFC SERVO	90 mm,6P,1m..	1
25	AH39-00708A	WIRE HARNESS	5p,L/W 90mm	1
26	3409-001138	SWITCH-DETECTOR	JDS2200A	1
27	3101-001300	MOTOR-DC	RF-300EA-1D390(WIRE 80mm)	1
28	AH59-01421A	CMS-S73	CMS-S73	1
29	AH30-00068A	PICK UP	CMS-S73	1

**\* Caution:** The MECHA does not include the DECK ASS'Y.  
The DECK ASS'Y must be ordered separately when repairing.

Pick-Up  
IDP-200A

SCART PCB

DECK ASS'Y

