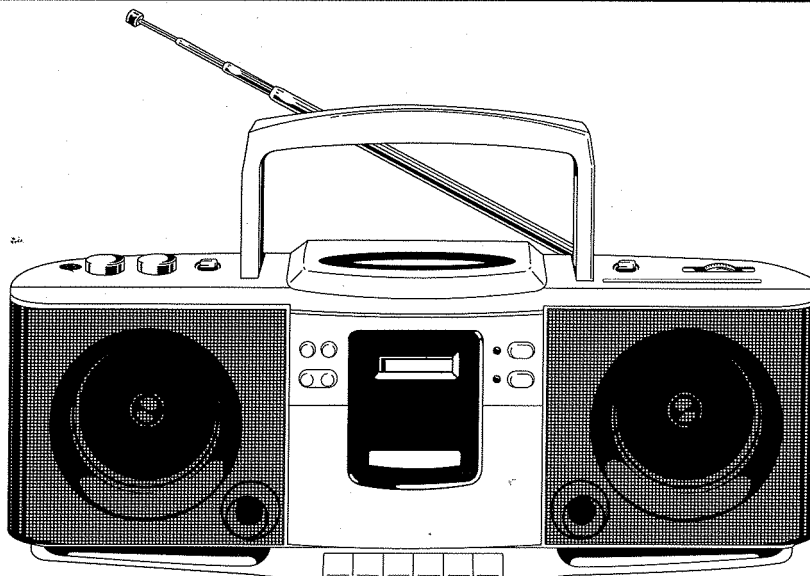


**RADIO CASSETTE RECORDER
WITH COMPACT DISC PLAYER**



SPECIFICATION

GENERAL

Frequency Response : 20~20000Hz
 Speakers : ϕ 102mmx2
 Power Sources : AC : See rating label
 : DC : 9V(UM-1,D,DM,R20,
 size x6 RMS)
 Output Power : 2.0W x 2
 Power Consumption : 12W
 Dimension : 470(W)x200(D)x178(H)mm
 Weight : 3.5Kg
 Headphone Jack : ϕ 3.5mm(Stereo)

RADIO

Frequency range : FM : 88-108MHz
 : AM(MW) : 530 - 1605KHz
 : 530-1710KHz (USA BAND)
 : LW : 150-285KHz
 : SW : 6-18MHz
 I.F. : FM : 10.7MHz
 : SW/AM(MW)/LW : 455 or 465KHz
 Antenna : FM/SW : Telescopic rod antenna
 : AM(MW)/LW : Ferrite bar antenna

TAPE

Frequency Response : 63Hz ~ 12.5KHz
 Signal to Noise Ratio
 Playback : 45 dB
 Record/Playback : 35 dB
 Separation : 33 dB
 Total Harmonic Distortion
 Playback : 2%
 Record/Playback : 3%
 Erasing Effect : 65 dB

COMPACT DISC PLAYER

Frequency Range : 20 ~ 20000Hz
 Signal to Noise Ratio : 82 dB (1KHz)
 Channel Separation : 70 dB
 (1KHz with LPF for 30KHz)
 D/A Conversion : 16 bits

SCHEMATIC DIAGRAM / IC & TR BLOCK DIAGRAM

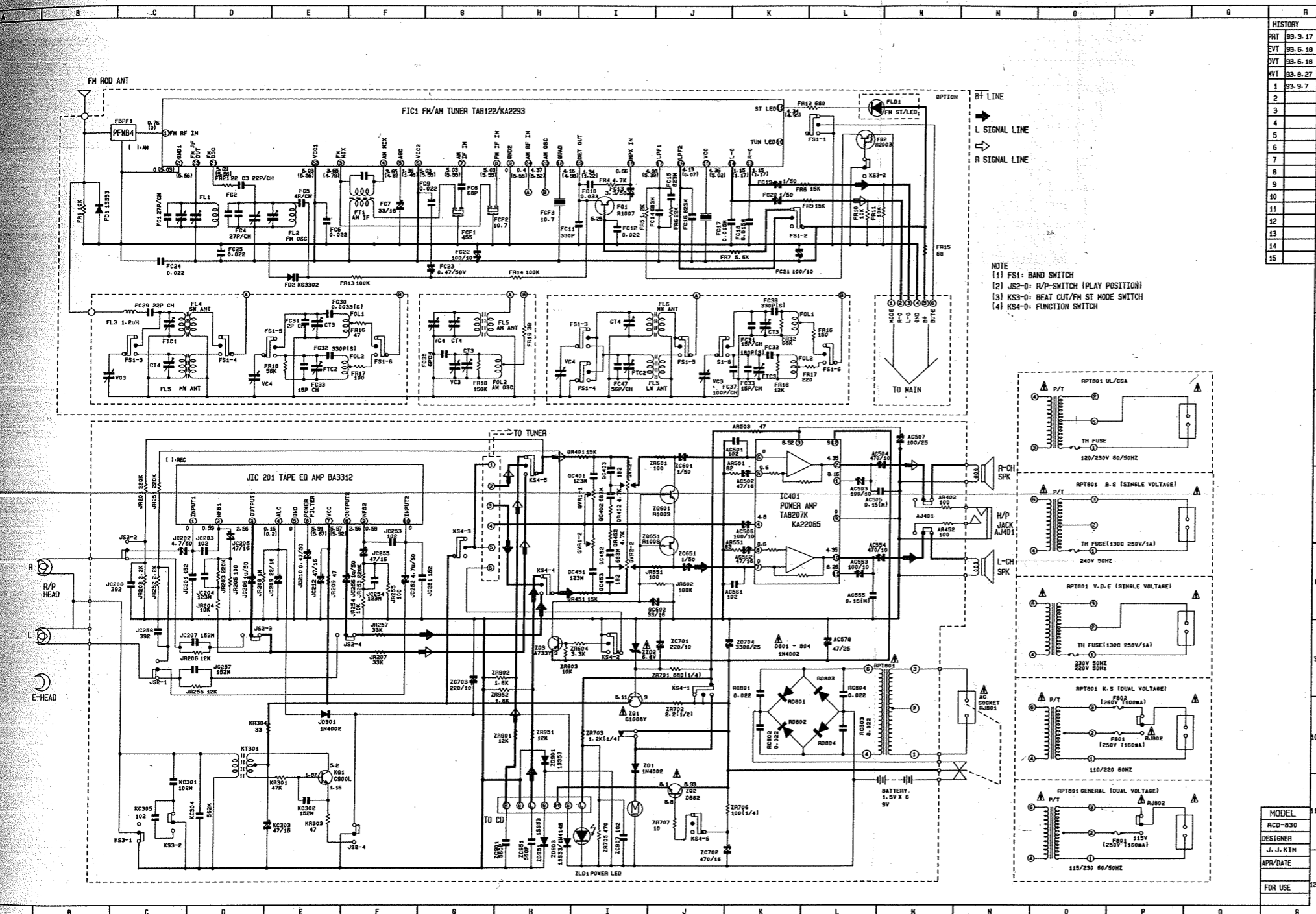
1. RADIO CASSETTE SECTION

● TR LOCATION

- E11 : KQ1 (C900L)
- H9 : ZQ3 (A733Y)
- I3 : FQ1 (R1007)
- I9 : ZQ1 (C10089)
- J7 : ZQ 601, 651 (R1009)
- J11 : ZQ2 (D882-O)
- L2 : FQ2 (R2003)

● IC LOCATION

- G2 : FIC1 (KA2293)
- E7 : JIC201 (BA3312)
- K7 : AIC401 (TA8207/KA22065)



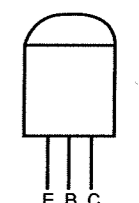
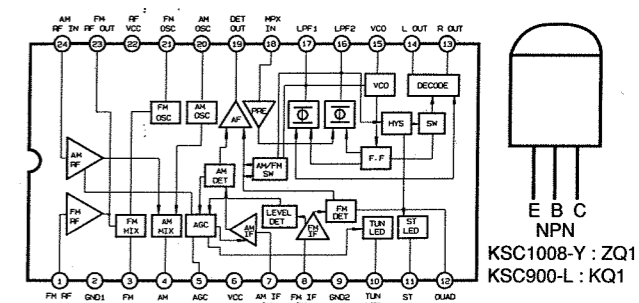
| HISTORY | |
|---------|---------|
| PBT | 93.3.17 |
| EVT | 93.6.18 |
| PVT | 93.6.18 |
| MT | 93.8.27 |
| 1 | 93.9.7 |
| 2 | |
| 3 | |
| 4 | |
| 5 | |
| 6 | |
| 7 | |
| 8 | |
| 9 | |
| 10 | |
| 11 | |
| 12 | |
| 13 | |
| 14 | |
| 15 | |

BT LINE
 L SIGNAL LINE
 R SIGNAL LINE

NOTE
 (1) FS1: BAND SWITCH
 (2) JS2-0: R/P-SWITCH (PLAY POSITION)
 (3) KS3-0: BEAT OUT/FM ST MODE SWITCH
 (4) KS4-0: FUNCTION SWITCH

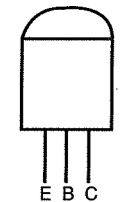
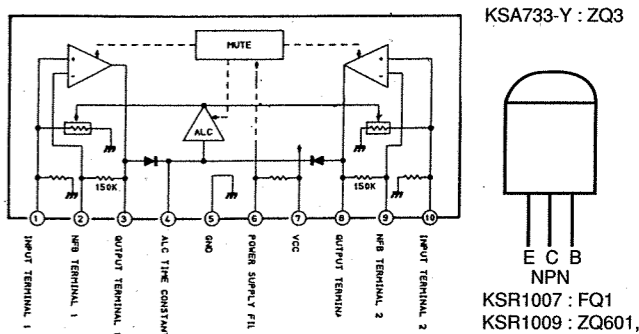
IC & TR BLOCK DIAGRAM

● KA2293 : FIC1



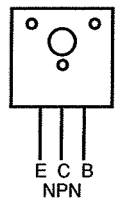
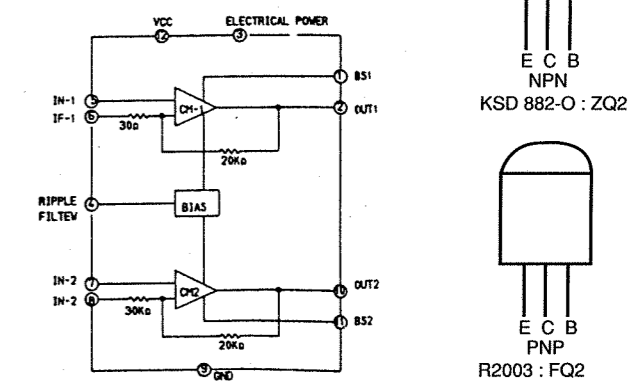
E B C
 NPN
 KSC1008-Y : ZQ1
 KSC900-L : KQ1

● BA3312N : JIC201

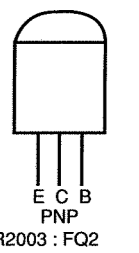


E B C
 PNP
 KSA733-Y : ZQ3

● TA8207 : AIC401 (KA22065)



E C B
 NPN
 KSD 882-O : ZQ2



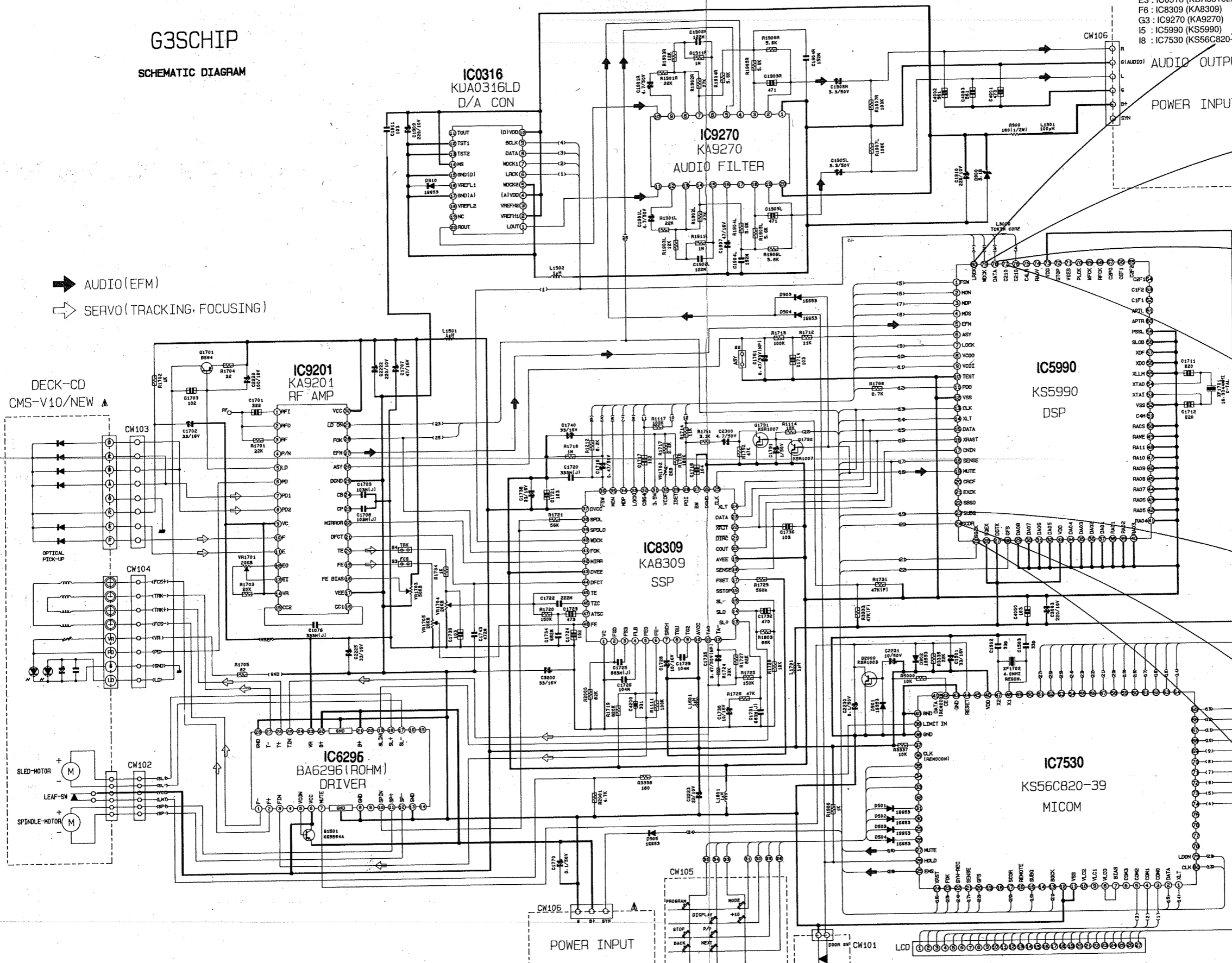
E C B
 PNP
 R2003 : FQ2

2. CDP SECTION

1. All resistors are in ohm (K = K ohm, M = M ohm) of, unless otherwise noted, wattage values (1/4, 1/8W).
2. All capacitance values are indicated in μF , PF.
3. The schematic diagram is subject to change upon improvement without prior notice.
4. Be sure to use specified part only, when replacement is required.

G3SCHIP
SCHEMATIC DIAGRAM

- TR LOCATION
C4 : Q1701 (B564)
C8 : Q1501 (B564)
G5 : Q1791, 1792 (R1007)
H7 : Q2000 (R1003)
- IC LOCATION
C5 : IC9201 (KA9201)
C7 : IC6296/9258 (BA6296/KA9258)
E3 : IC0316 (KDA0316LD)
F6 : IC8309 (KA8309)
G3 : IC9270 (KA9270)
I5 : IC5990 (KS5990)
I8 : IC7530 (KS56C820-39)



➔ AUDIO (EFM)
➔ SERVO (TRACKING, FOCUSING)

