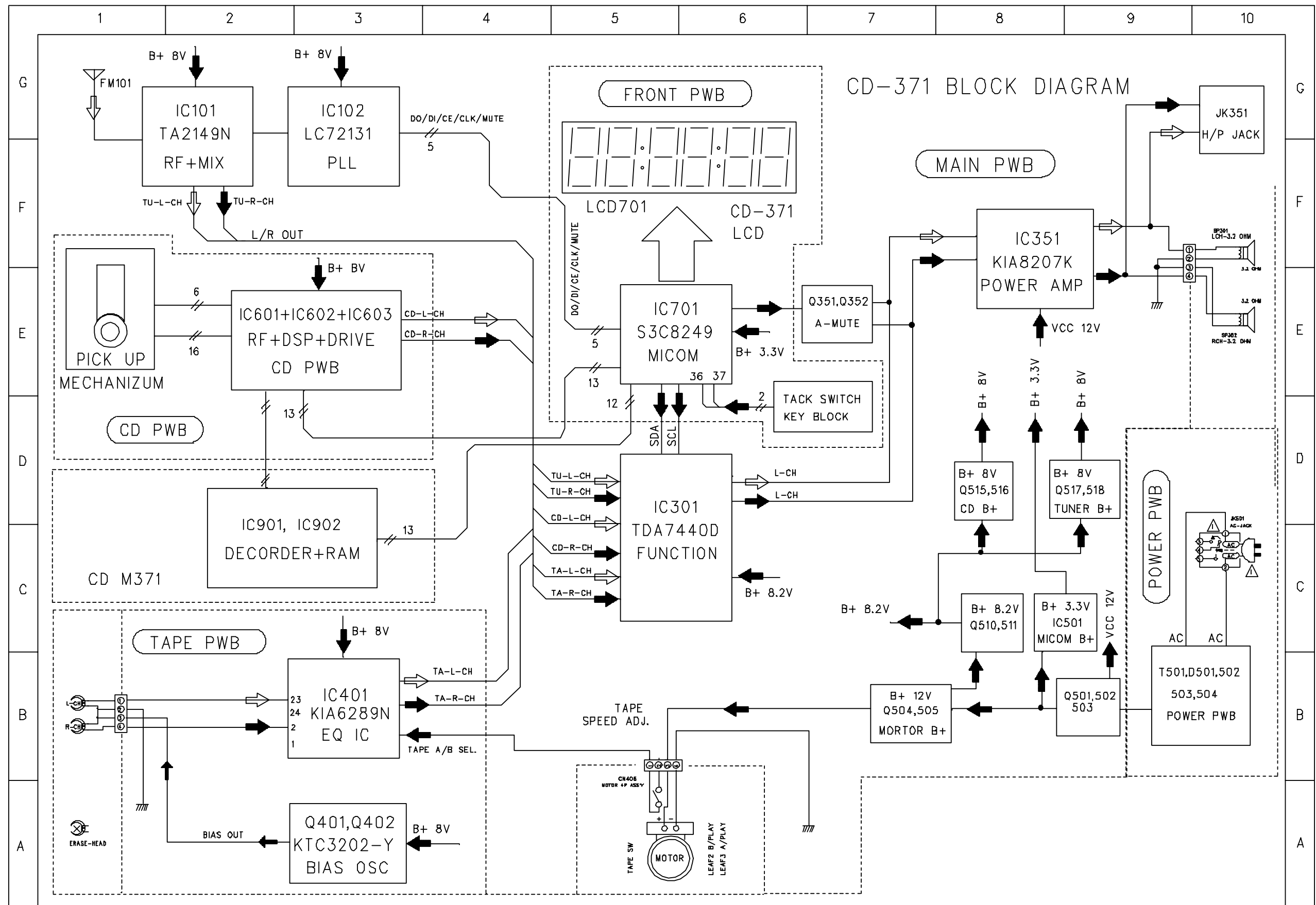
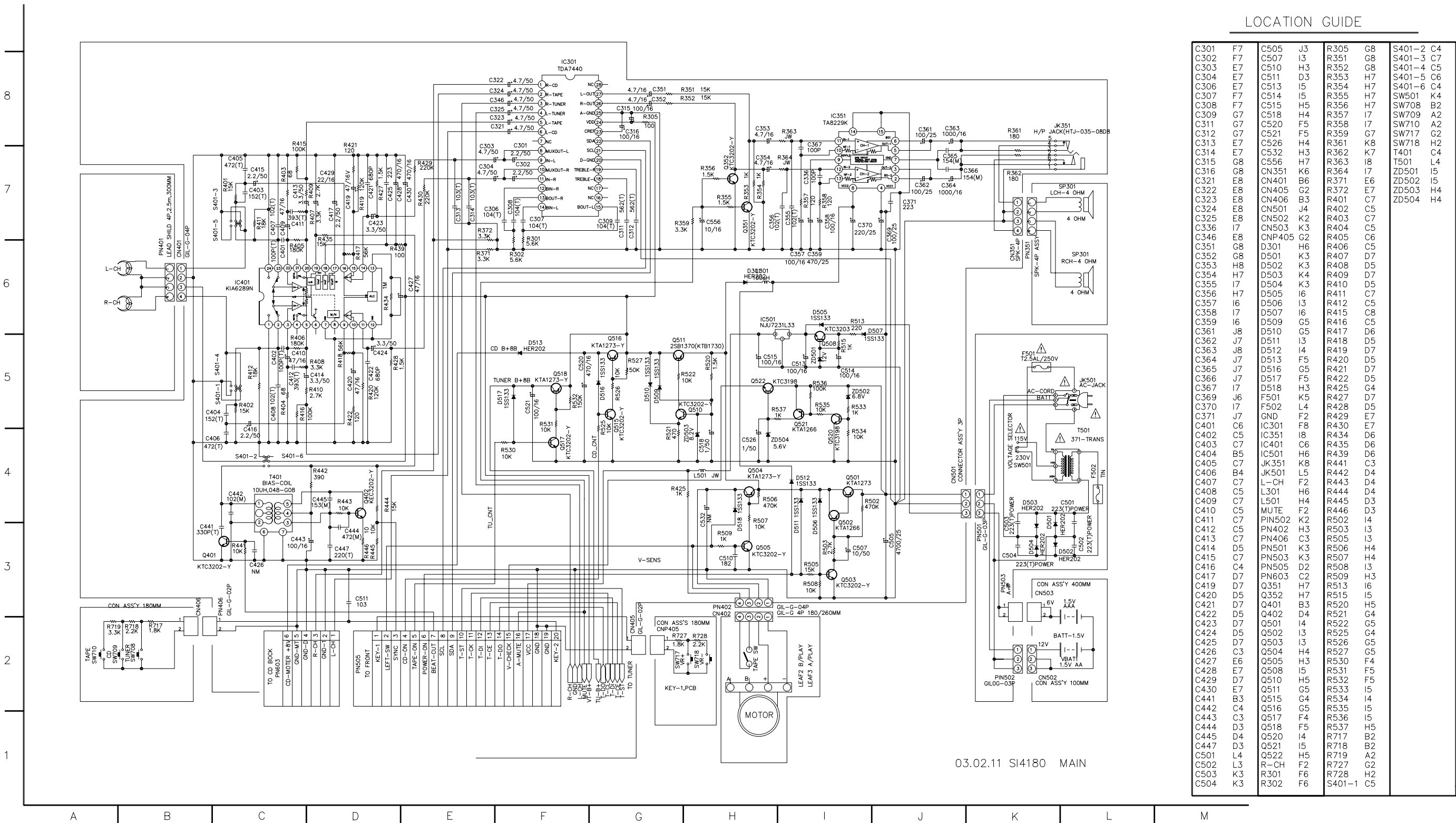


# □ BLOCK DIAGRAM

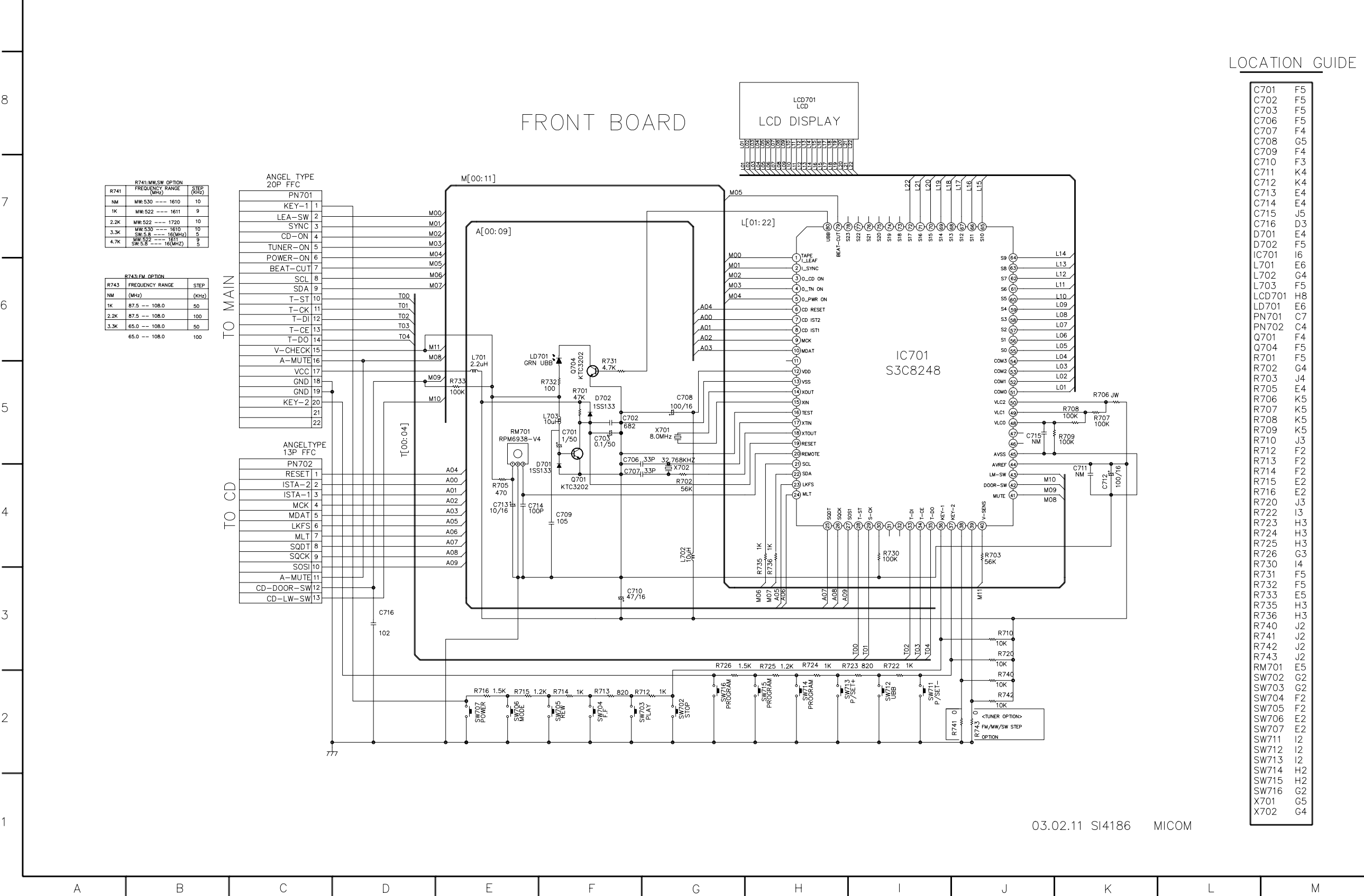


SCHEMATIC DIAGRAMS

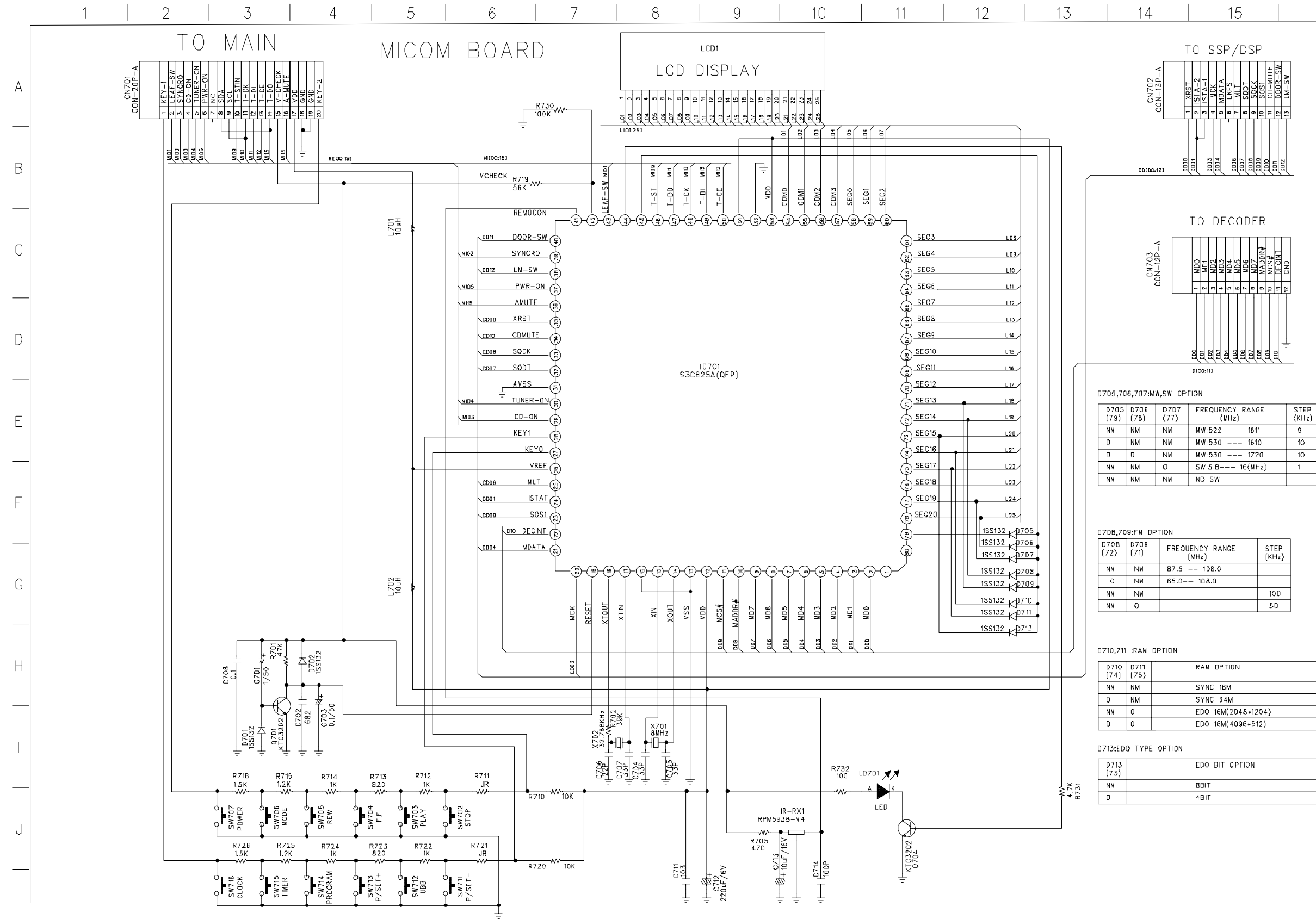
1. MAIN SCHEMATIC DIAGRAM



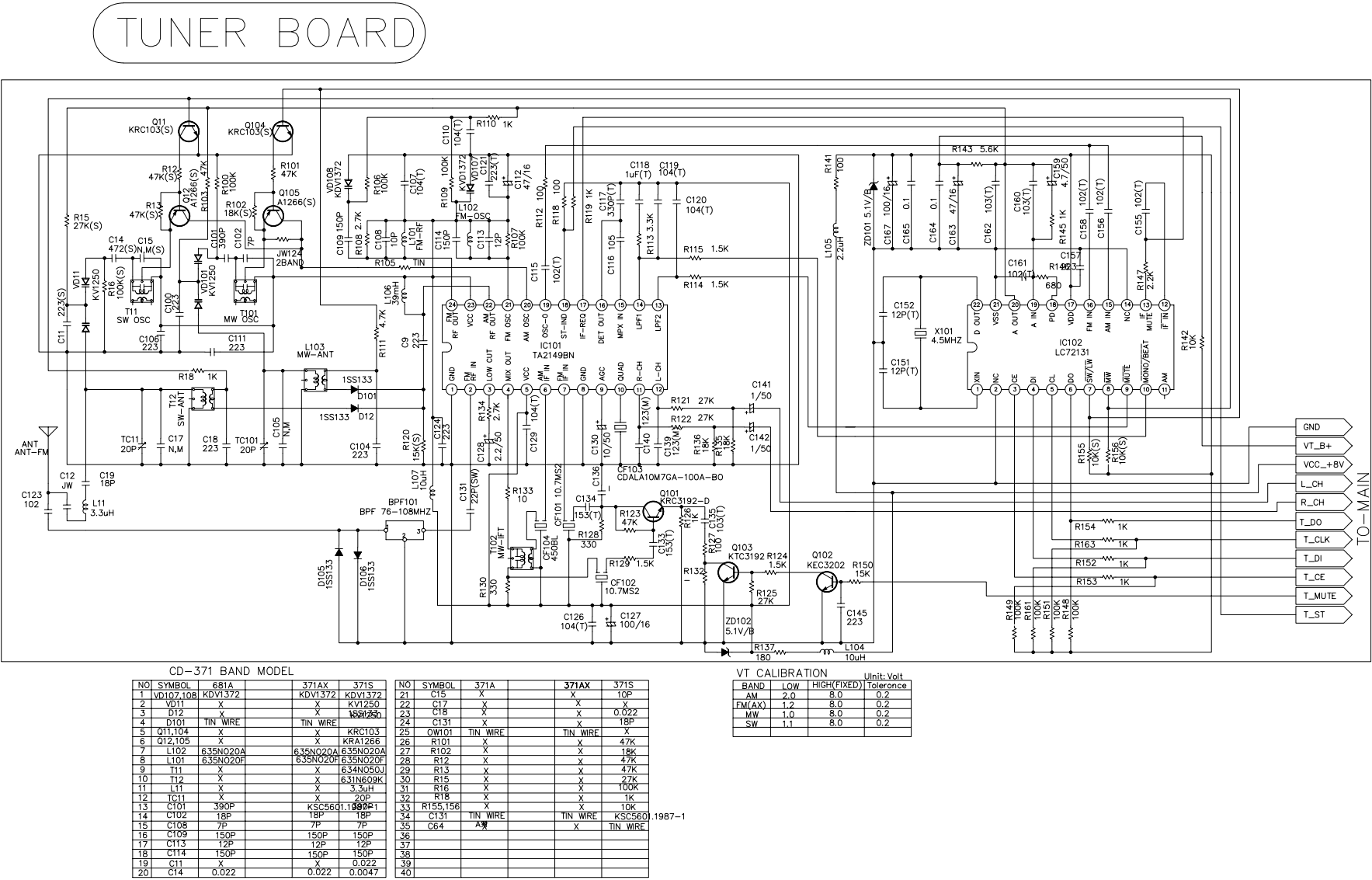
2.  $\mu$ -COM SCHEMATIC DIAGRAM



2.  $\mu$ -COM SCHEMATIC DIAGRAM (FOR MP3)

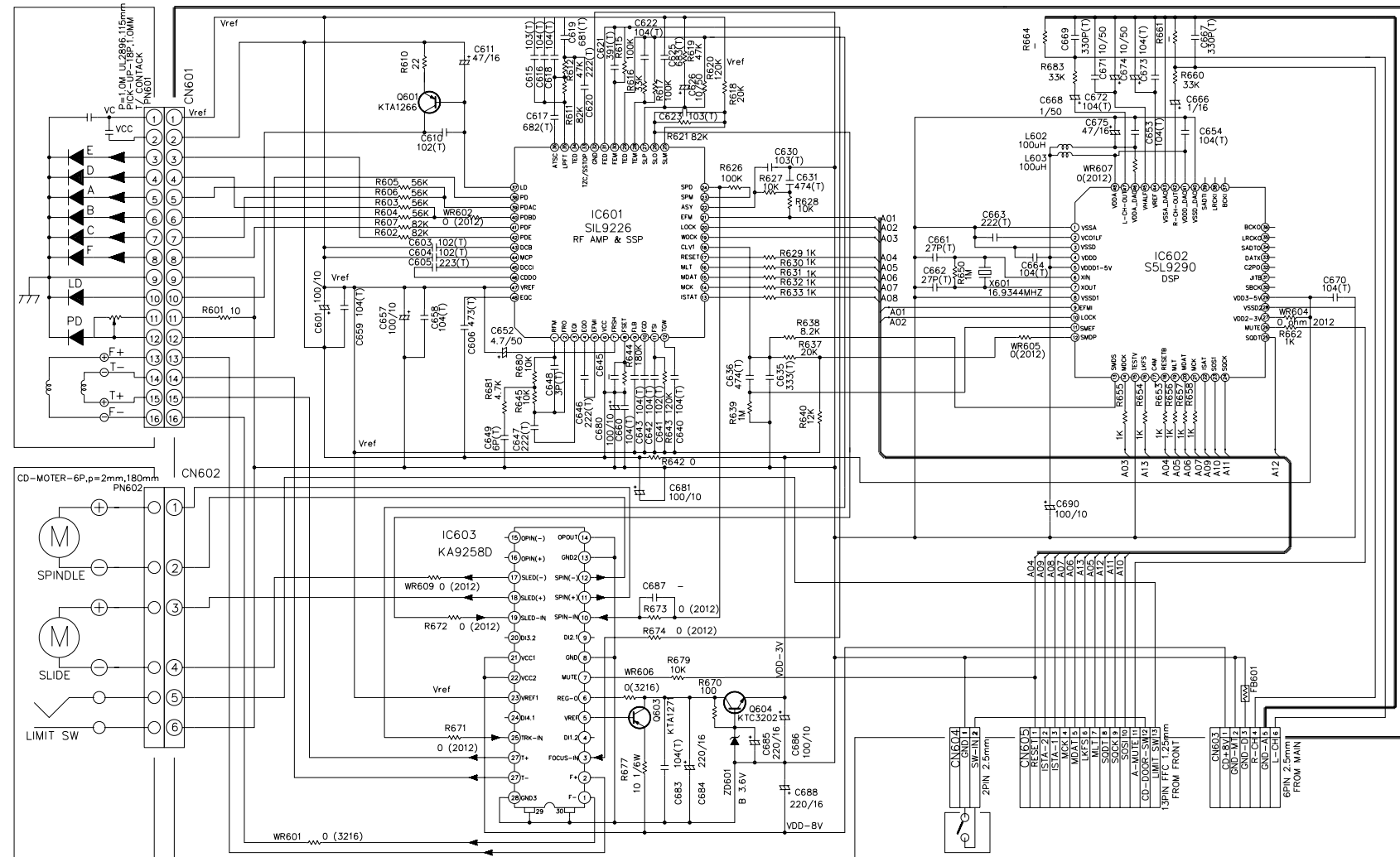


3. TUNER SCHEMATIC DIAGRAM



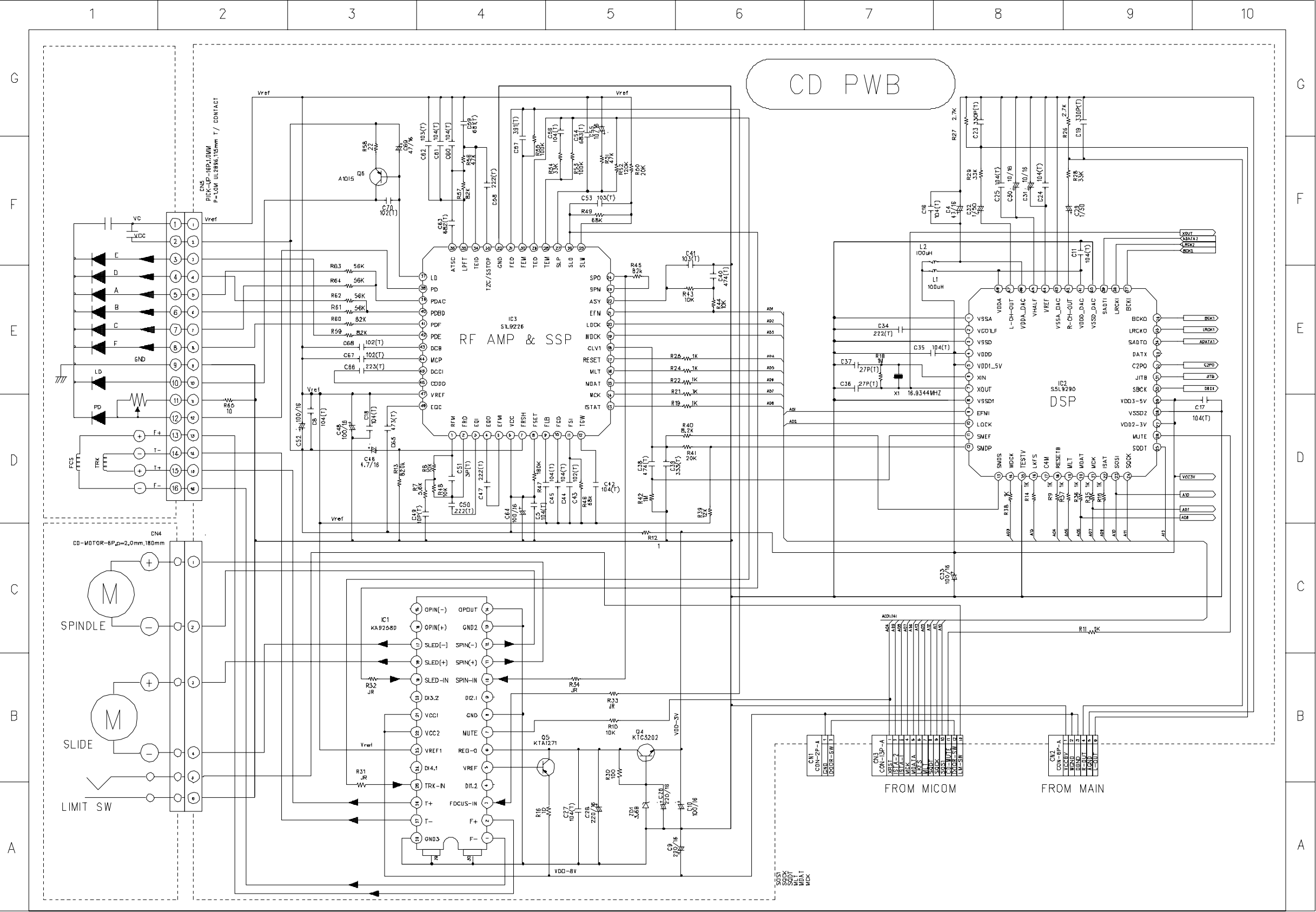
03.02.11 SI4408 TUNER

#### 4. CD SCHEMATIC DIAGRAM

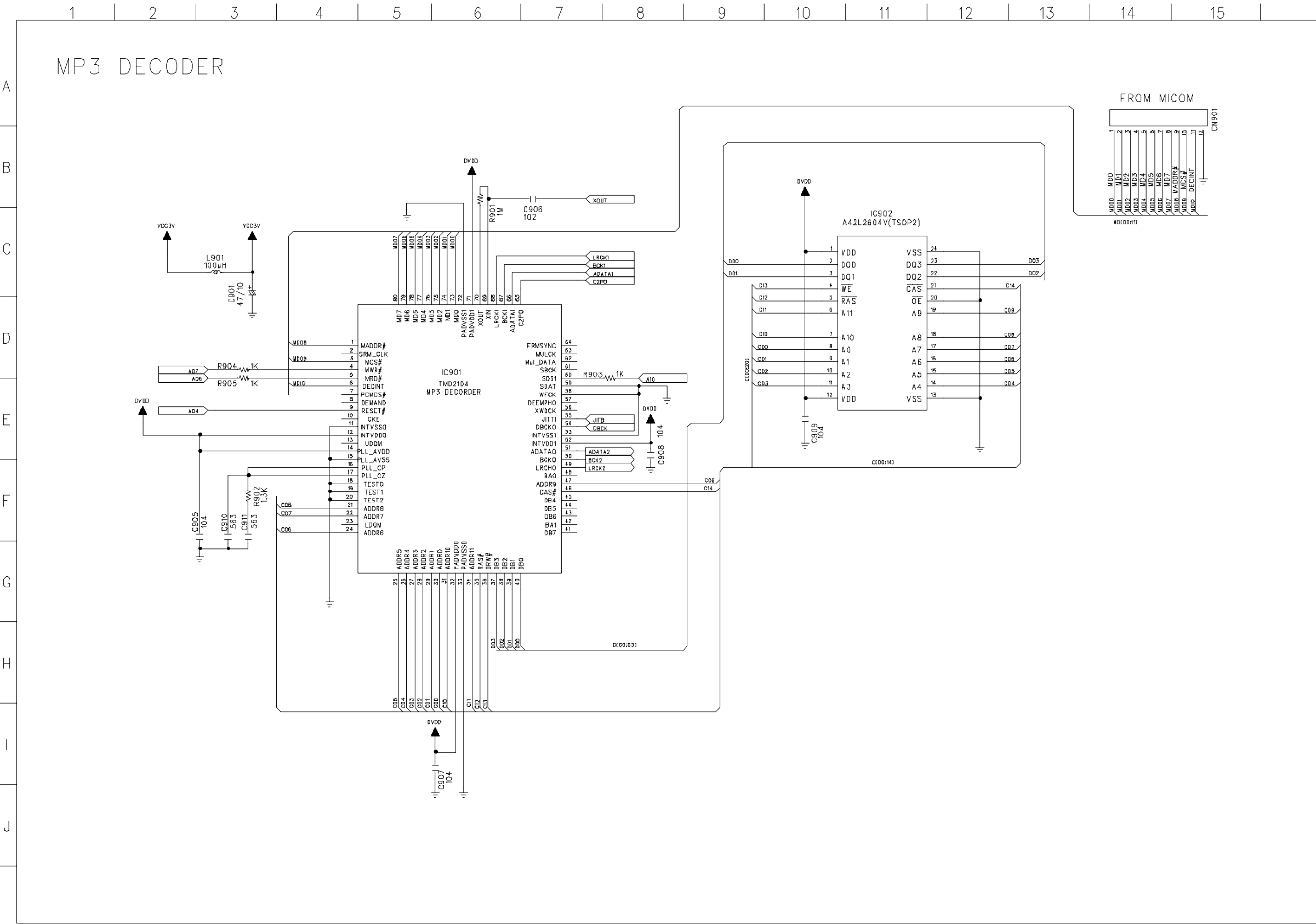


03.02.11 SI4409 CD

4. CD SCHEMATIC DIAGRAM (FOR MP3)



5. DECODER SCHEMATIC DIAGRAM (FOR MP3)





## ❏ WIRING DIAGRAM

