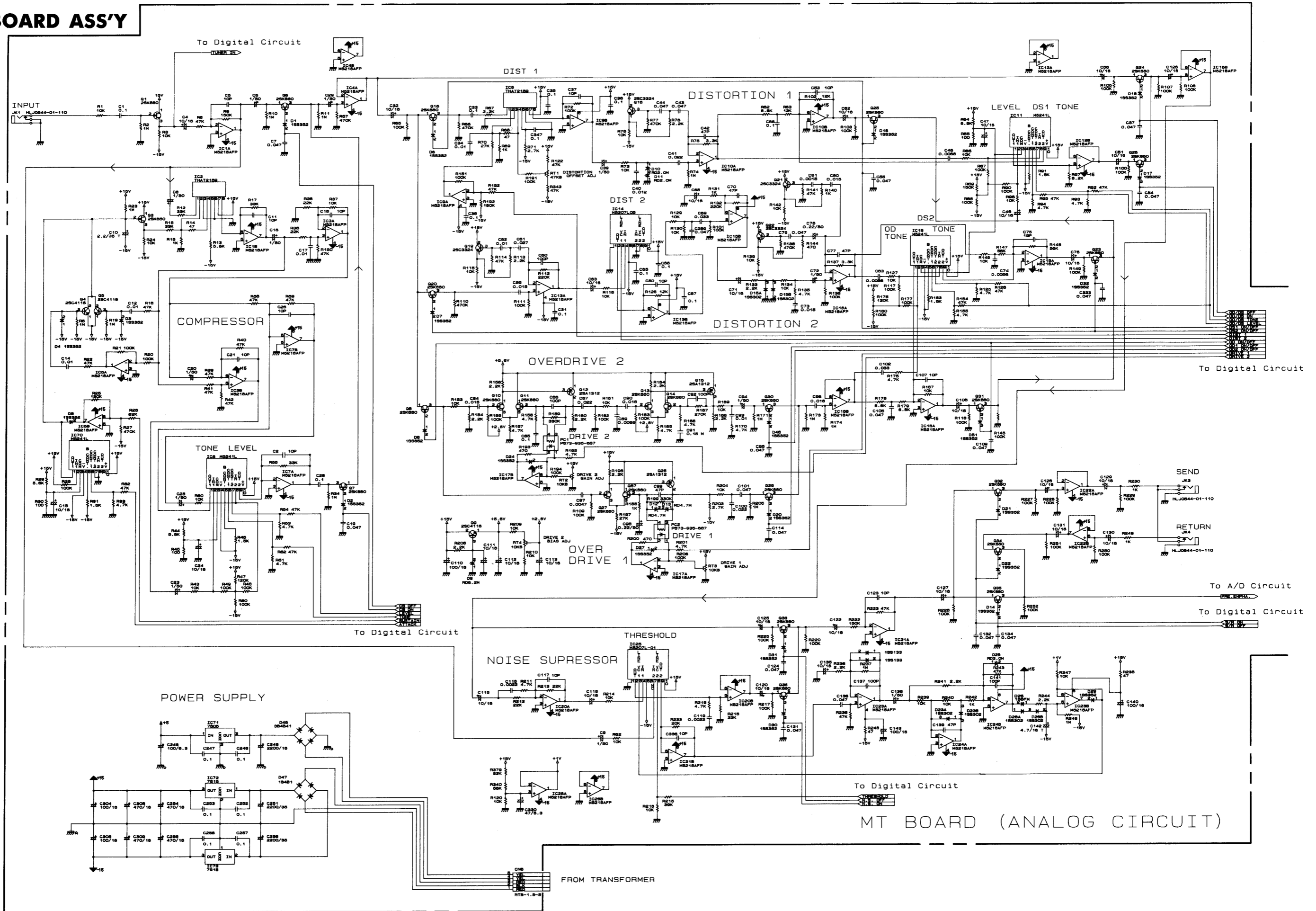


1 2 3 4 5 6 7 8 9 10 11 12 13 14 15 16 17 18 19 20 21 22 23 24 25 26 27 28 29 30

A MT BOARD ASS'Y

B
C
D
E
F
G
H
I
J
K
L
M
N
O
P
Q
R
S
T
U

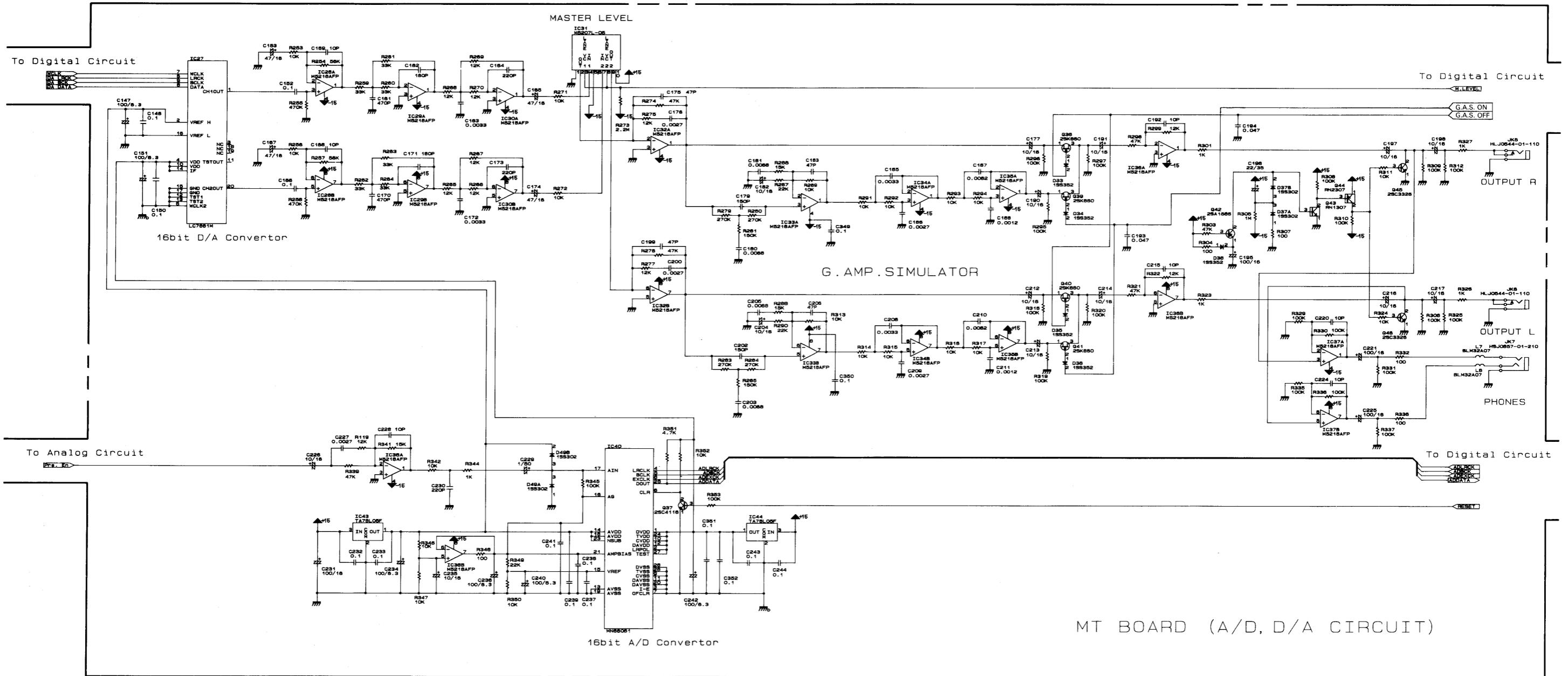


MT BOARD (ANALOG CIRCUIT)

1 2 3 4 5 6 7 8 9 10 11 12 13 14 15 16 17 18 19 20 21 22 23 24 25 26 27 28 29 30

A
B
C
D
E
F
G
H
I
J
K
L
M
N
O
P
Q
R
S
T
U

MT BOARD ASS'Y

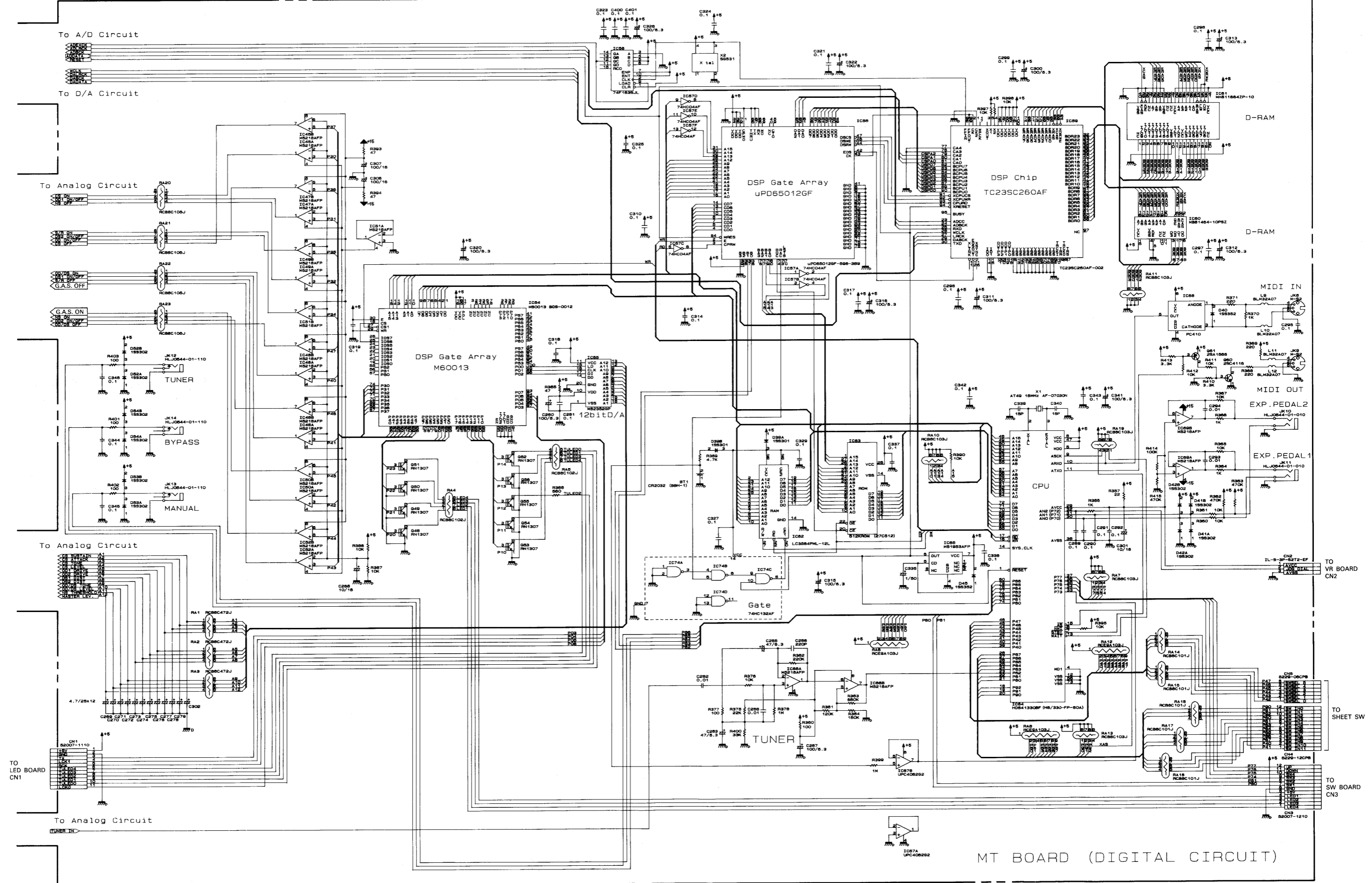


MT BOARD (A/D, D/A CIRCUIT)

1 2 3 4 5 6 7 8 9 10 11 12 13 14 15 16 17 18 19 20 21 22 23 24 25 26 27 28 29 30

A
B
C
D
E
F
G
H
I
J
K
L
M
N
O
P
Q
R
S
T
U

MT BOARD ASS'Y



MT BOARD (DIGITAL CIRCUIT)

1 2 3 4 5 6 7 8 9 10 11 12 13 14 15 16 17 18 19 20 21 22 23 24 25 26 27 28 29 30

A
B
C
D
E
F
G
H
I
J
K
L
M
N
O
P
Q
R
S
T
U

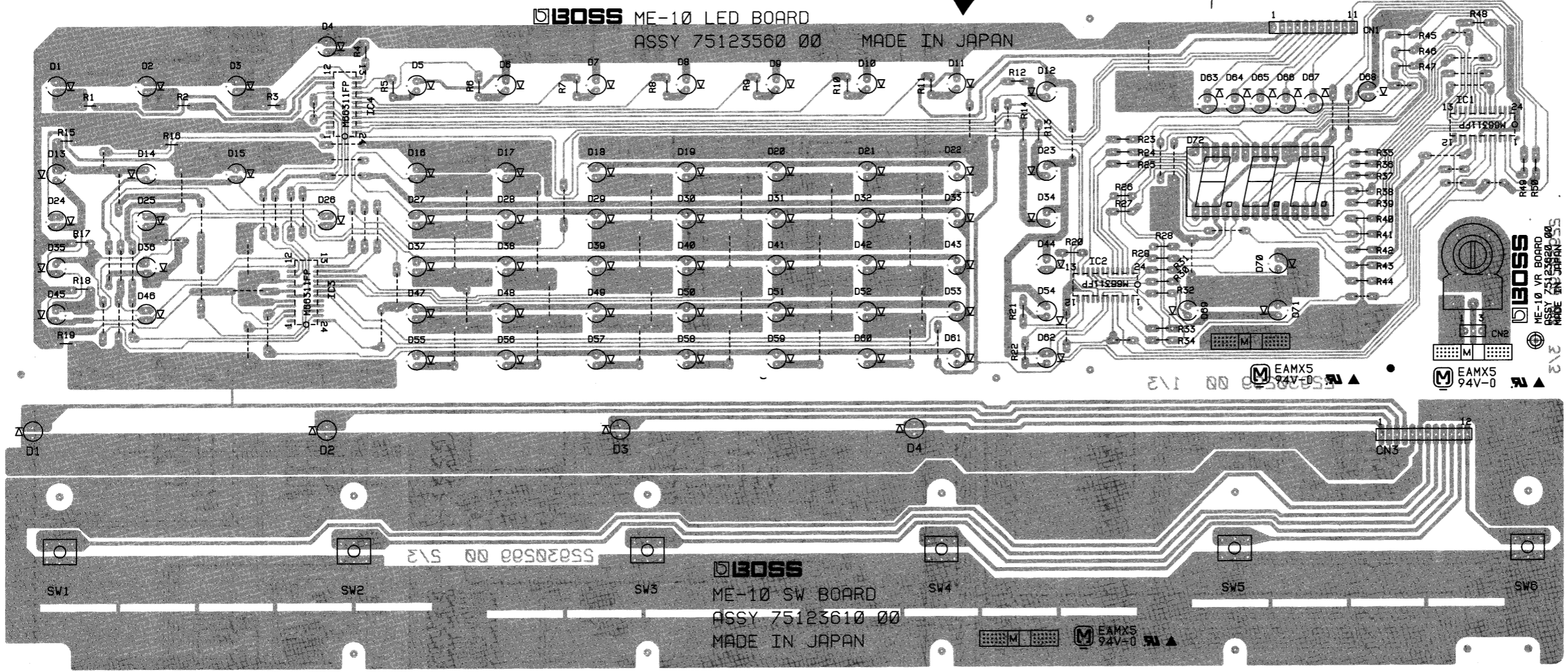
LED BOARD ASS'Y
ASSY 7512356000
(pcb 2293029900 1/3)

LED Board Assy
(pcb 2293029900 1/3)

REPLACEMENT/補修用

LED BOARD ASS'Y
ASSY 7512356000
(pcb 2293029900 1/3)

- ◆ Replacement LED Board Assy includes the following 2PCBs.
- ◆ 補助用 LED Board Assy は下記の 2 基板を含みます。
 - SW Board Assy (pcb 2293029900 2/3)
 - VR Board Assy (pcb 2293029900 3/3)



VR Board Assy
(pcb 2293029900 3/3)

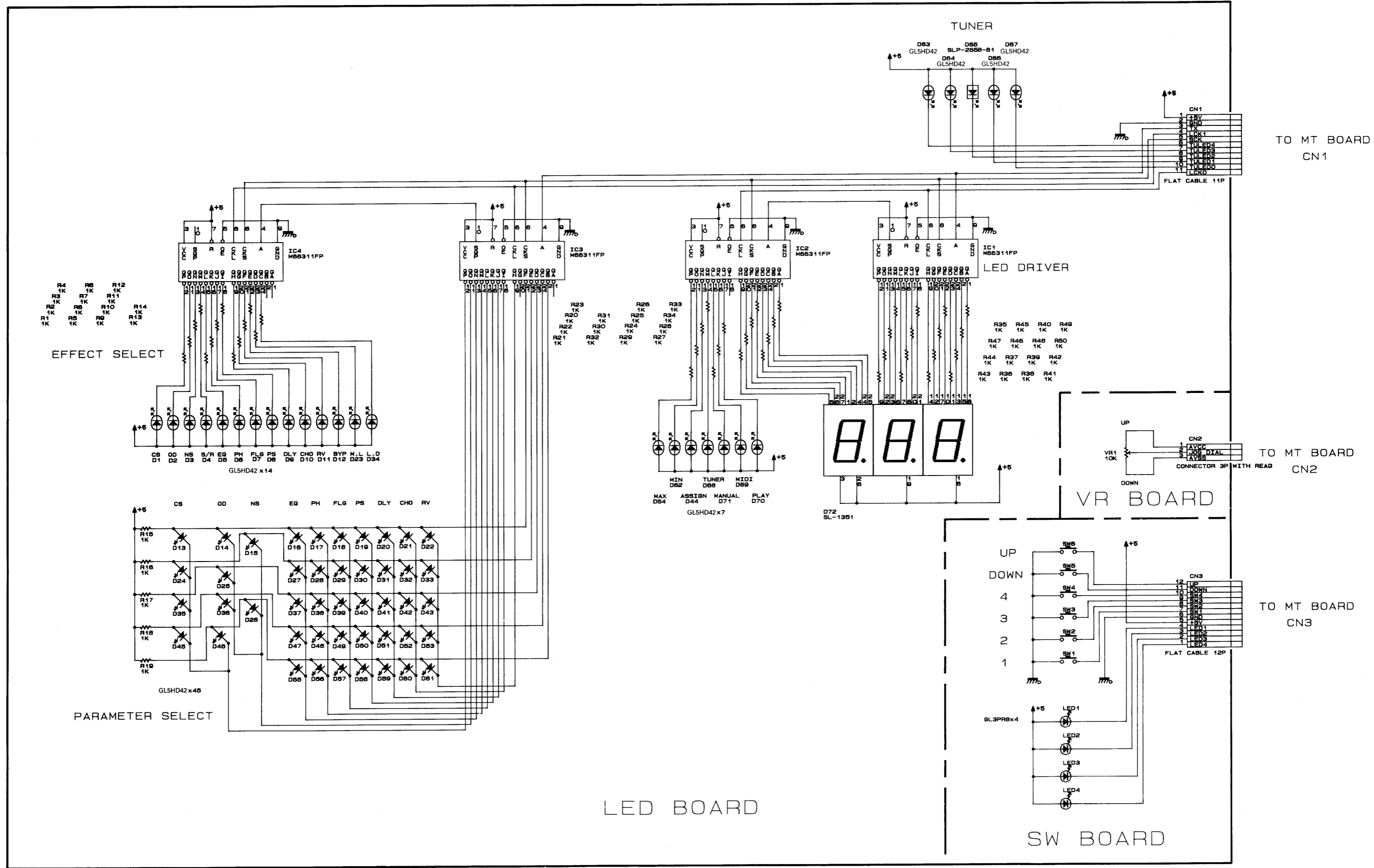
SW Board Assy
(pcb 2293029900 2/3)

View from component side

1 2 3 4 5 6 7 8 9 10 11 12 13 14 15 16 17 18 19 20 21 22 23 24 25 26 27 28 29 30

A LED BOARD ASS'Y

A
B
C
D
E
F
G
H
I
J
K
L
M
N
O
P
Q
R
S
T
U



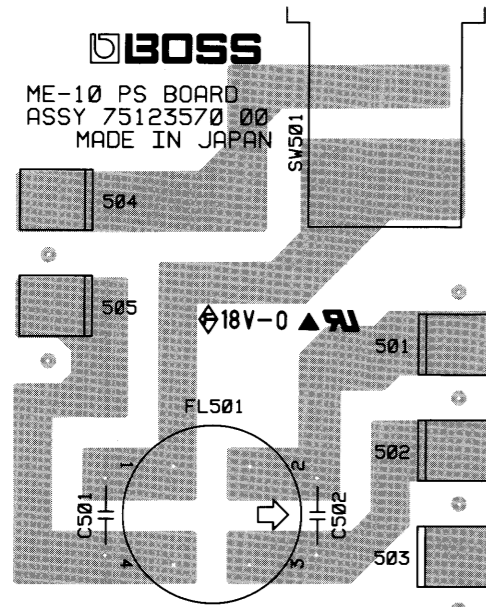
1 2 3 4 5 6 7 8 9 10 11 12 13 14 15 16 17 18 19 20 21 22 23 24 25 26 27 28 29 30

A
B
C
D
E
F
G
H
I
J
K
L
M
N
O
P
Q
R
S
T
U

PS BOARD ASS'Y

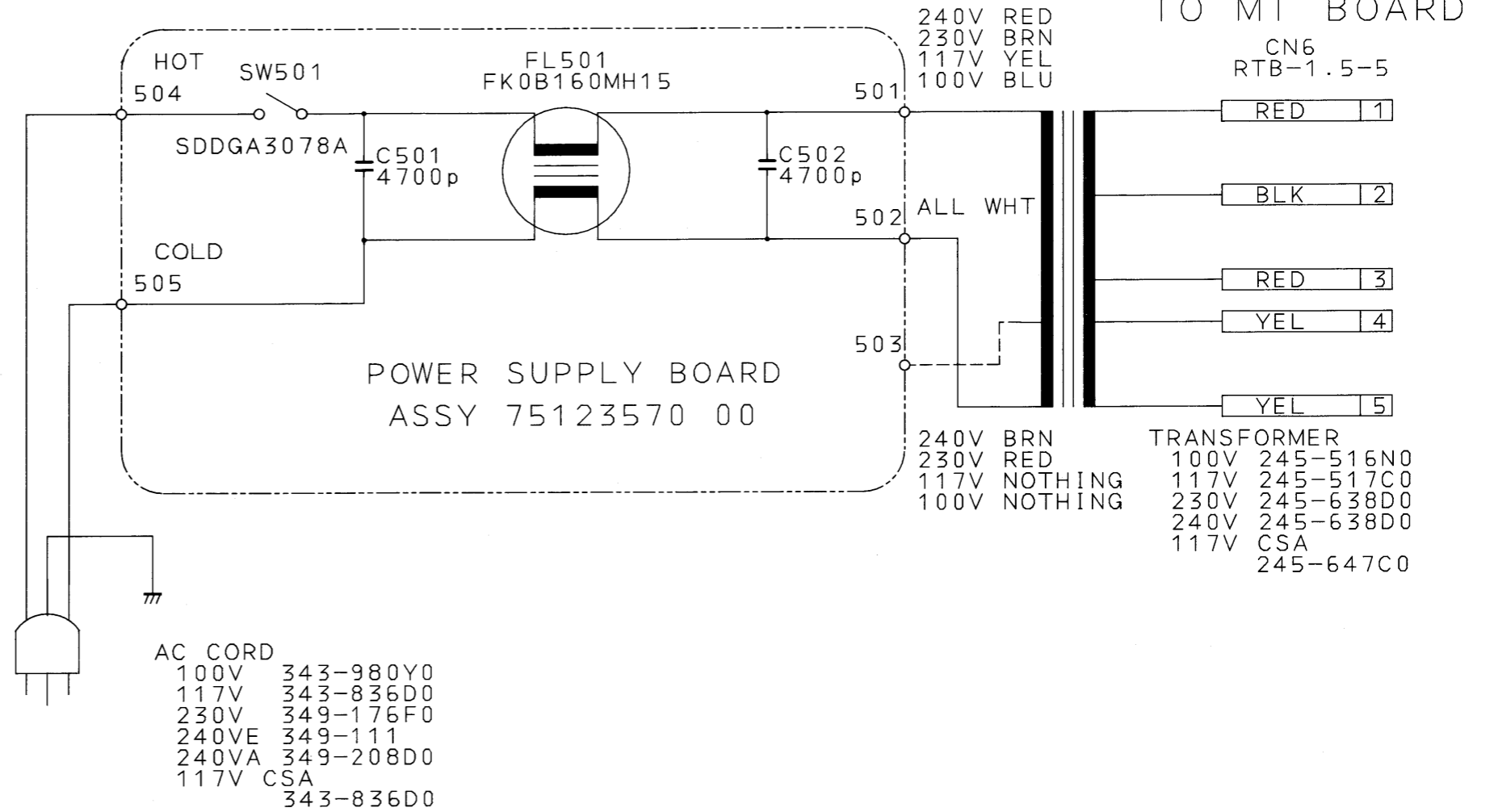
ASSY 7512357000

(pcb 2293029700)



View from component side

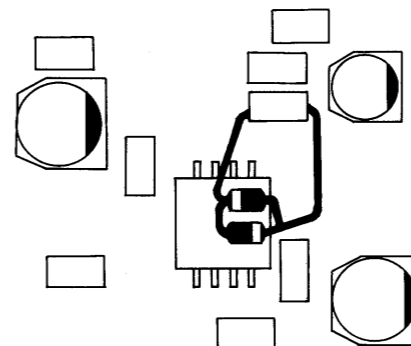
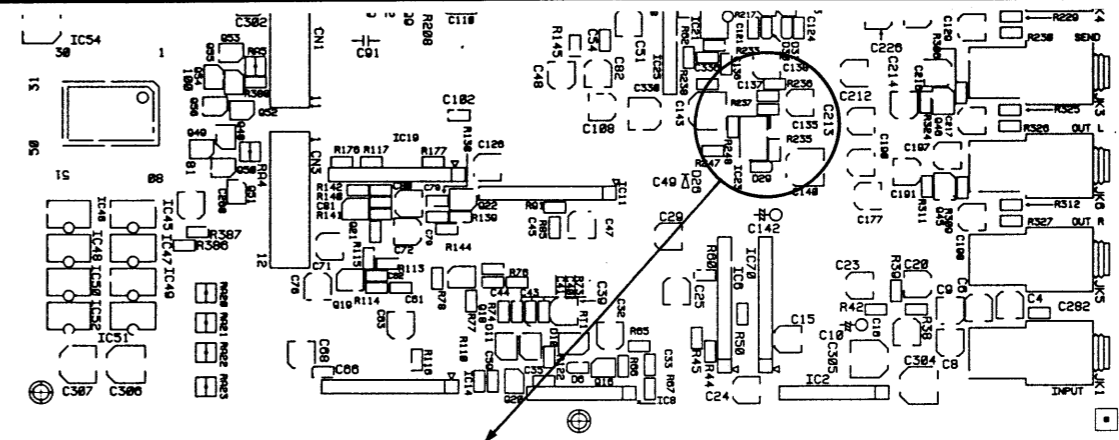
PS BOARD ASS'Y



CHANGE INFORMATION/変更案内

- ◎ Change: add diodes (Main board)
Two parallel-connection diodes (1SS133's) - with cathode of one diode connected to the anode of the other, and anode to the cathode - are placed across the pins 1 and 2 of IC23. See Fig. A.
Effective : Serial No. ZD60100-ZD95149
Reason : To reduce noise
Field service : No modification required because of in-factory change.
- ◎ Change: Conductive and silk patterns re-layout (Main board)
Effective : Serial No. ZD95150-up
Reason : To mount modified circuits and components in place on the PCB.
Field service : No modification required because of in-factory change.

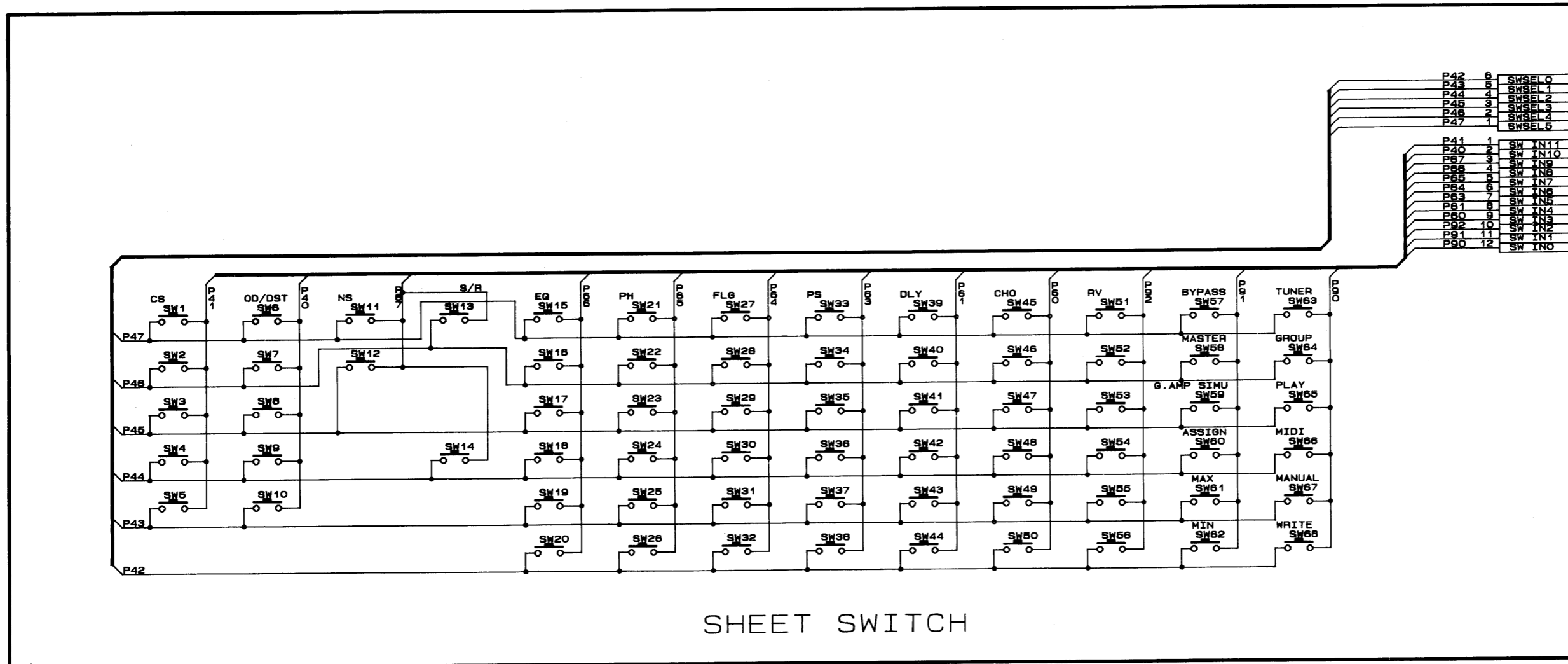
- ◎ ダイオードの追加 (MAIN BOARD 上)
変更内容 : IC23 の 1 番ピンと 2 番ピンの間に、ダイオード 1SS133 を 2 個、交互に追加する。
詳細は、図 A を参照して下さい。
実施製番 : SNo. ZD60100 - ZD95149
理由 : ノイズ対策の為。
サービスの対応 : 全数対策済みの為、何もする必要はありません。
- ◎ シルク、パターン修正 (MAIN BOARD 上)
変更内容 : MAIN BOARD 上のパターンとシルクを修正。
実施製番 : SNo. ZD95150 以降
理由 : 後付け部品を実装する為。
サービスの対応 : 何もする必要はありません。



1 2 3 4 5 6 7 8 9 10 11 12 13 14 15 16 17 18 19 20 21 22 23 24 25 26 27 28 29 30

A
B
C
D
E
F
G
H
I
J
K
L
M
N
O
P
Q
R
S
T
U

APPENDIX/付録 SHEET SW



P42	6	SWSEL 0
P43	5	SWSEL 1
P44	4	SWSEL 2
P45	3	SWSEL 3
P46	2	SWSEL 4
P47	1	SWSEL 5
P41	1	SW IN11
P40	2	SW IN10
P67	3	SW IN9
P66	4	SW IN8
P65	5	SW IN7
P64	6	SW IN6
P63	7	SW IN5
P61	8	SW IN4
P60	9	SW IN3
P62	10	SW IN2
P61	11	SW IN1
P60	12	SW IN0

TO MT BOARD CN5

TO MT BOARD CN4