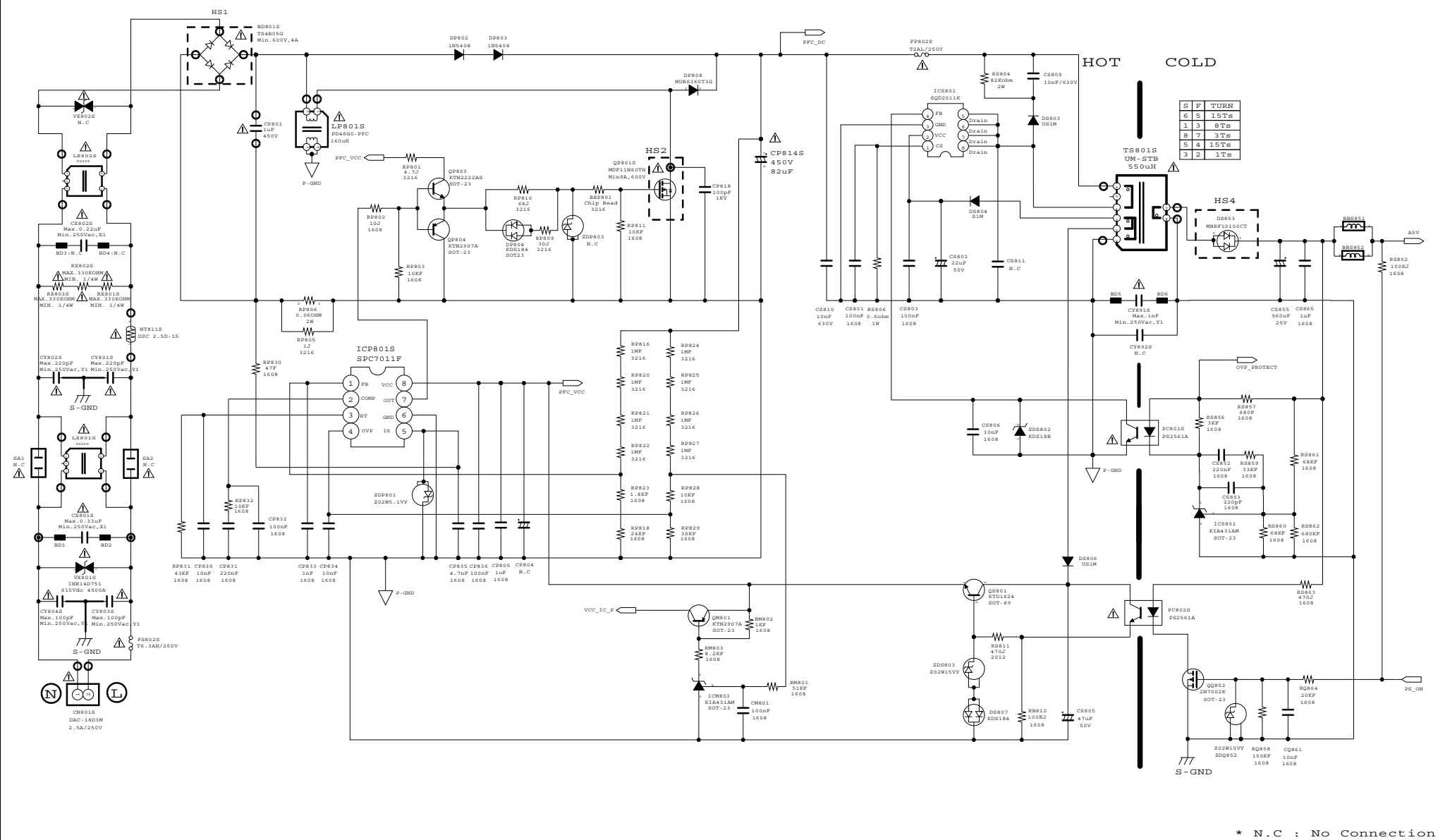
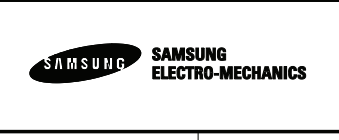
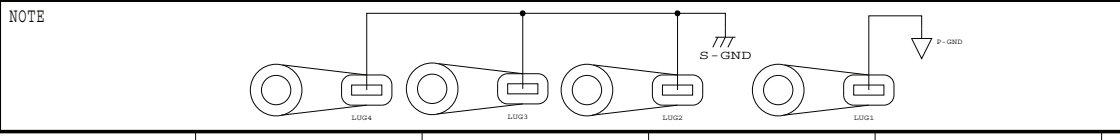


4. CIRCUIT DRAWING

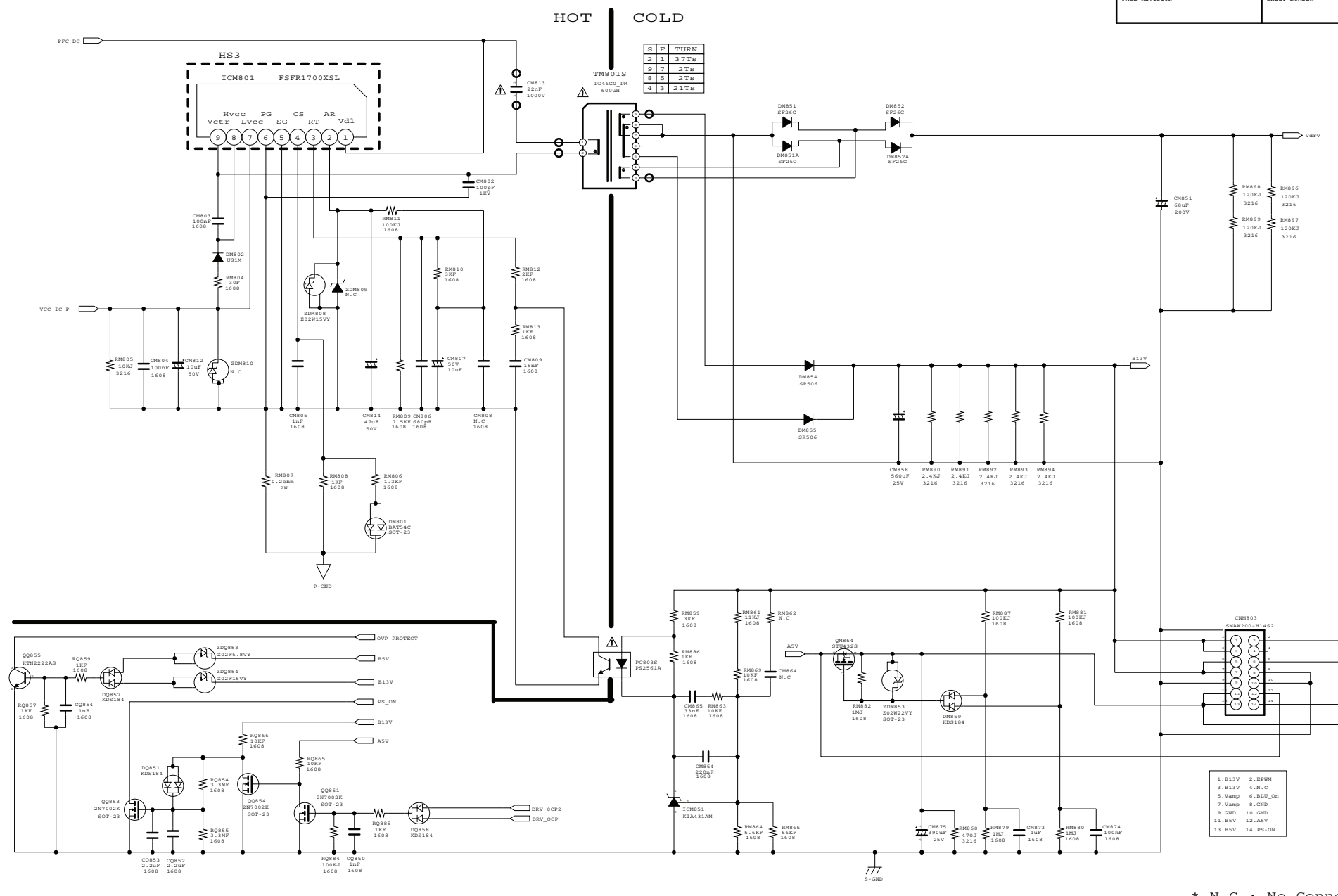


S	F	TURN
6	5	1ST
3	3	8TS
8	7	3TS
5	4	15TS
3	2	1TS

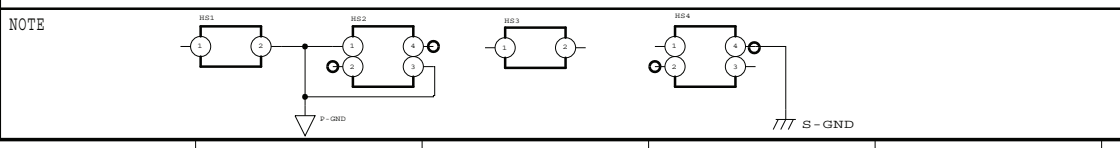
* N.C : No Connection



USER	DATE	11.04.27
MODEL NAME PD46G0_BSM	SCALE	DRAWN Y.M.Jung
PDM NUMBER PSLF121A03S	REVISION R.B	CHECKED T.S.Kim
BN44-00473A	CommonScore	APPROVED H.G.Choi



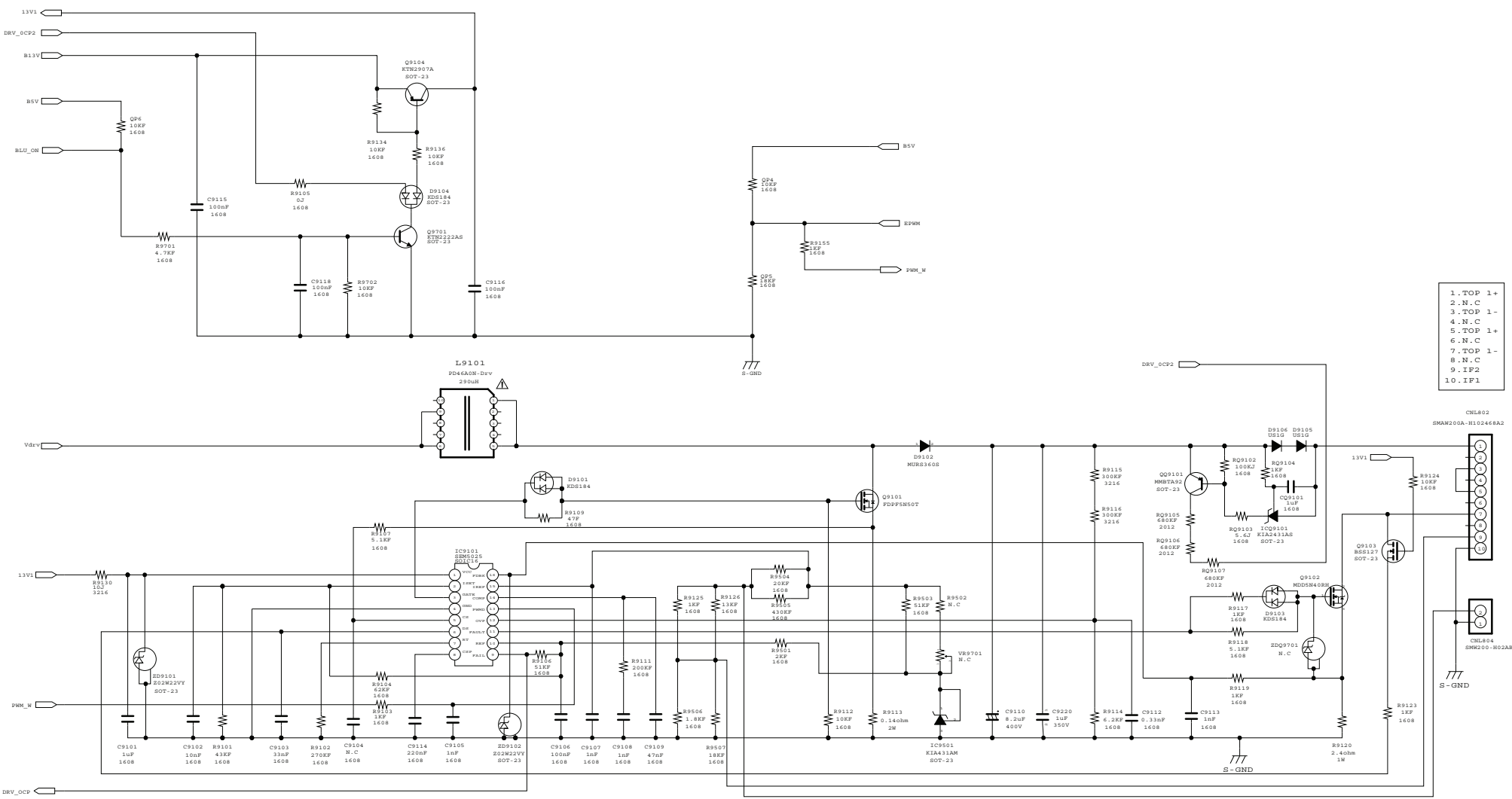
S	F	TURN
2	1	37Ts
3	7	2Ts
3	5	2Ts
3	3	21Ts



- 1. B13V
- 2. EPWM
- 3. B13V
- 4. B.C.
- 5. Vamp
- 6. BLID_On
- 7. Vamp
- 8. GND
- 9. GND
- 10. GND
- 11. BSV
- 12. ASV
- 13. BSV
- 14. PS-On

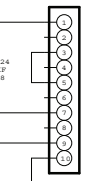
* N.C : No Connection

		USER MODEL NAME PD46G0_BSM PDM NUMBER PSLF121A03S BN44-00473A	DATE 11.04.27 DRAWN Y.M.Jung CHECKED T.S.Kim APPROVED H.G.Choi
		SCALE REVISION R.B LEVEL	



- 1. TOP 1+
- 2. N.C
- 3. TOP 1-
- 4. N.C
- 5. TOP 1+
- 6. N.C
- 7. TOP 1-
- 8. N.C
- 9. IP2
- 10. IP1

CHL802
SMAN200A-R102468A2



CHL804
SMK200-R02AB

MODE	IP1/IP2
308mA	OPEN
290mA	SHORT

* N.C : No Connection

NOTE



USER	DATE	11.04.27
MODEL NAME PD46G0_BSM	SCALE	DRAWN Y.M.Jung
PDM NUMBER PSLF121A03S	REVISION R.B	CHECKED T.S.Kim
BN44-00473A	LEVEL	APPROVED H.G.Choi

5. BLOCK DIAGRAM PART

