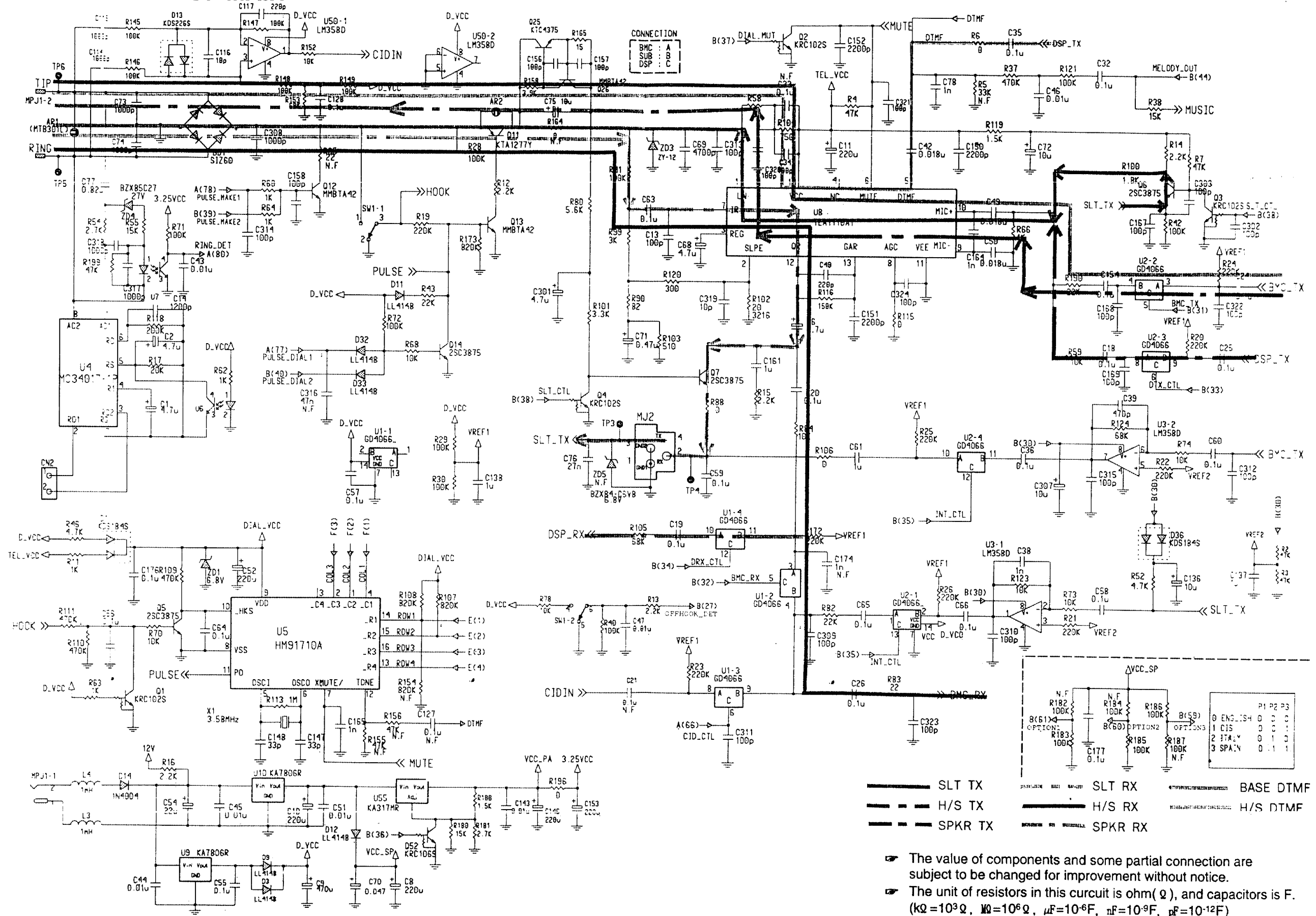
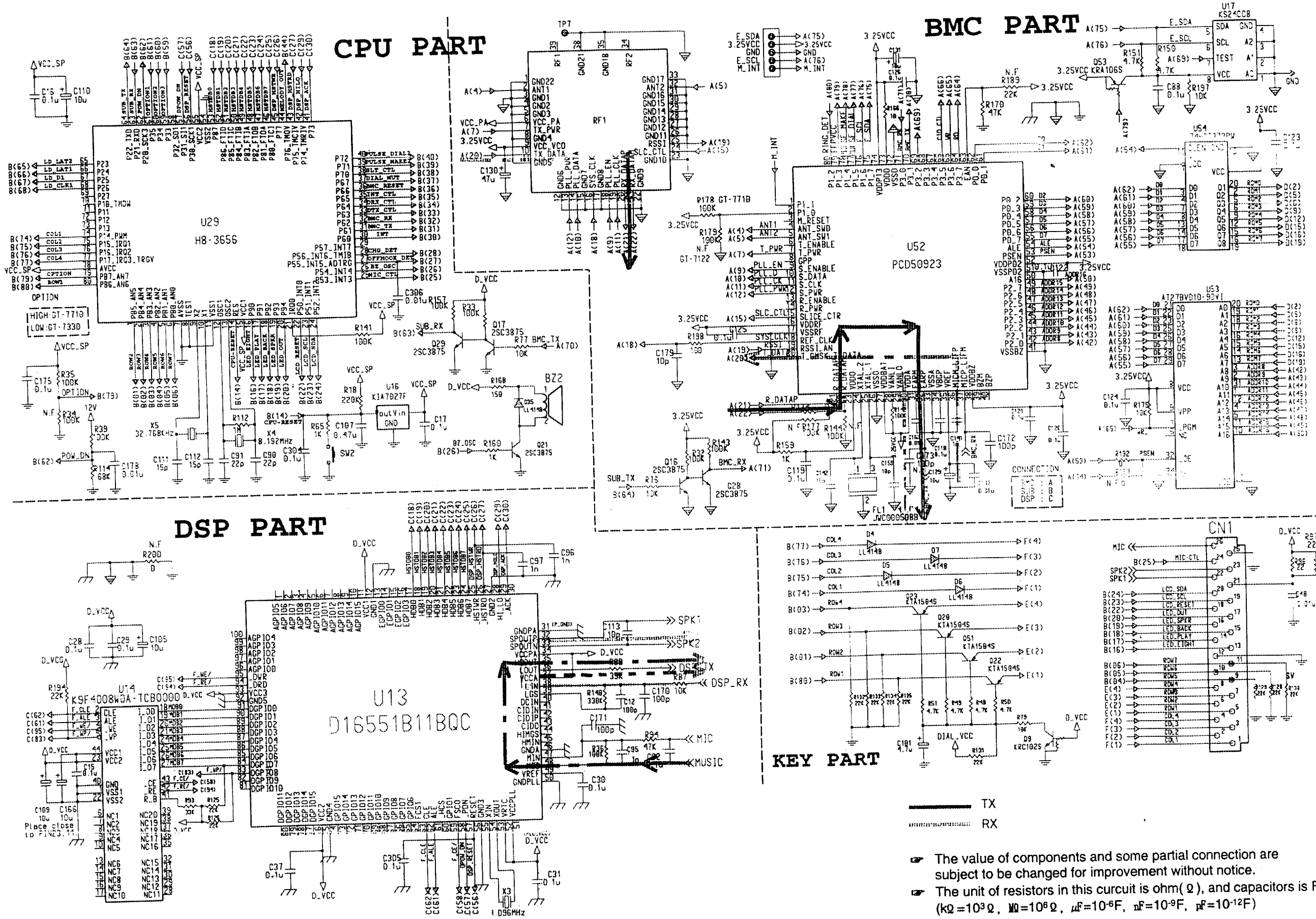


SECTION 5. CIRCUIT DIAGRAM

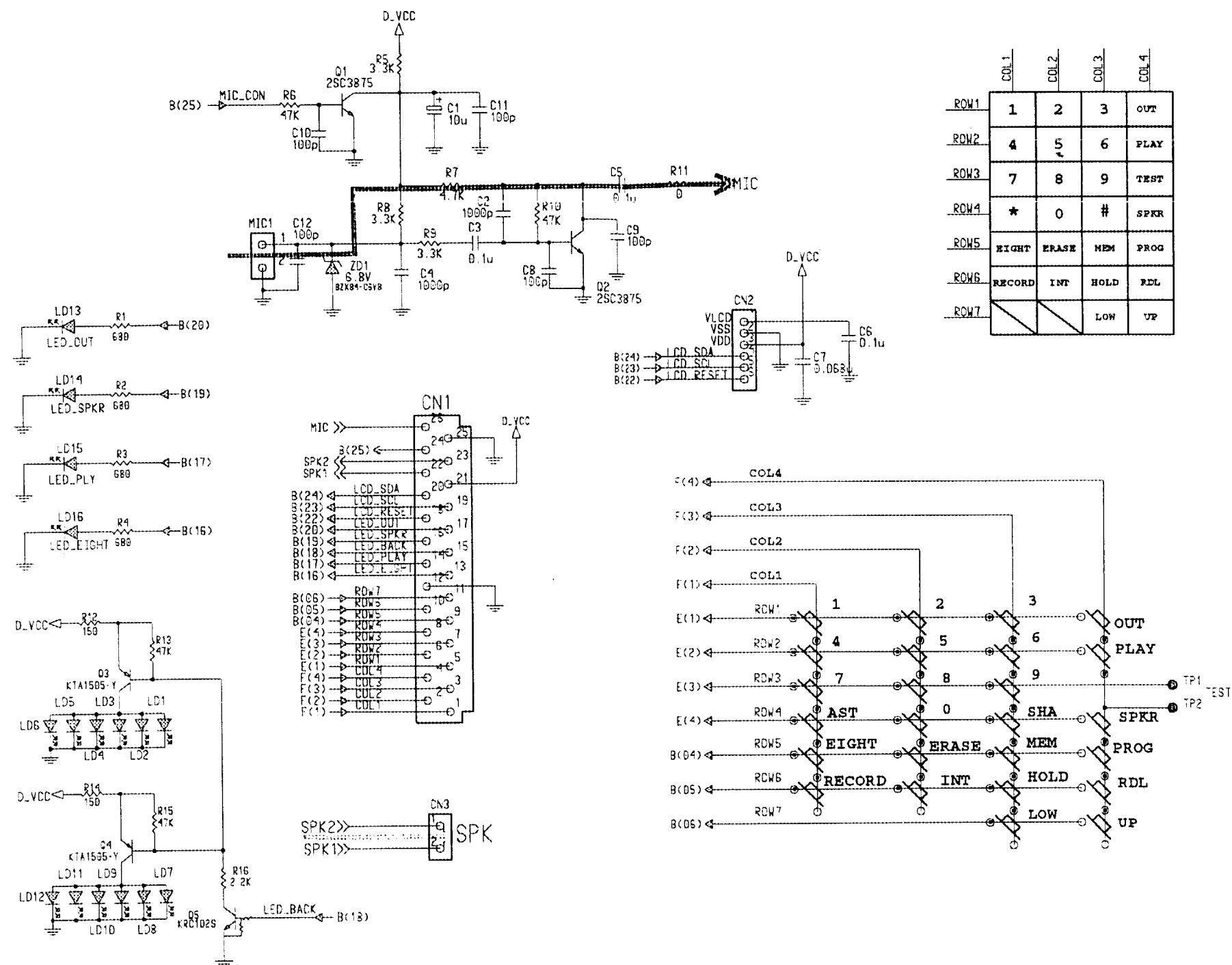
5.1 TELLINE PART OF MAIN



5.2 BMC & PWR PART OF MAIN



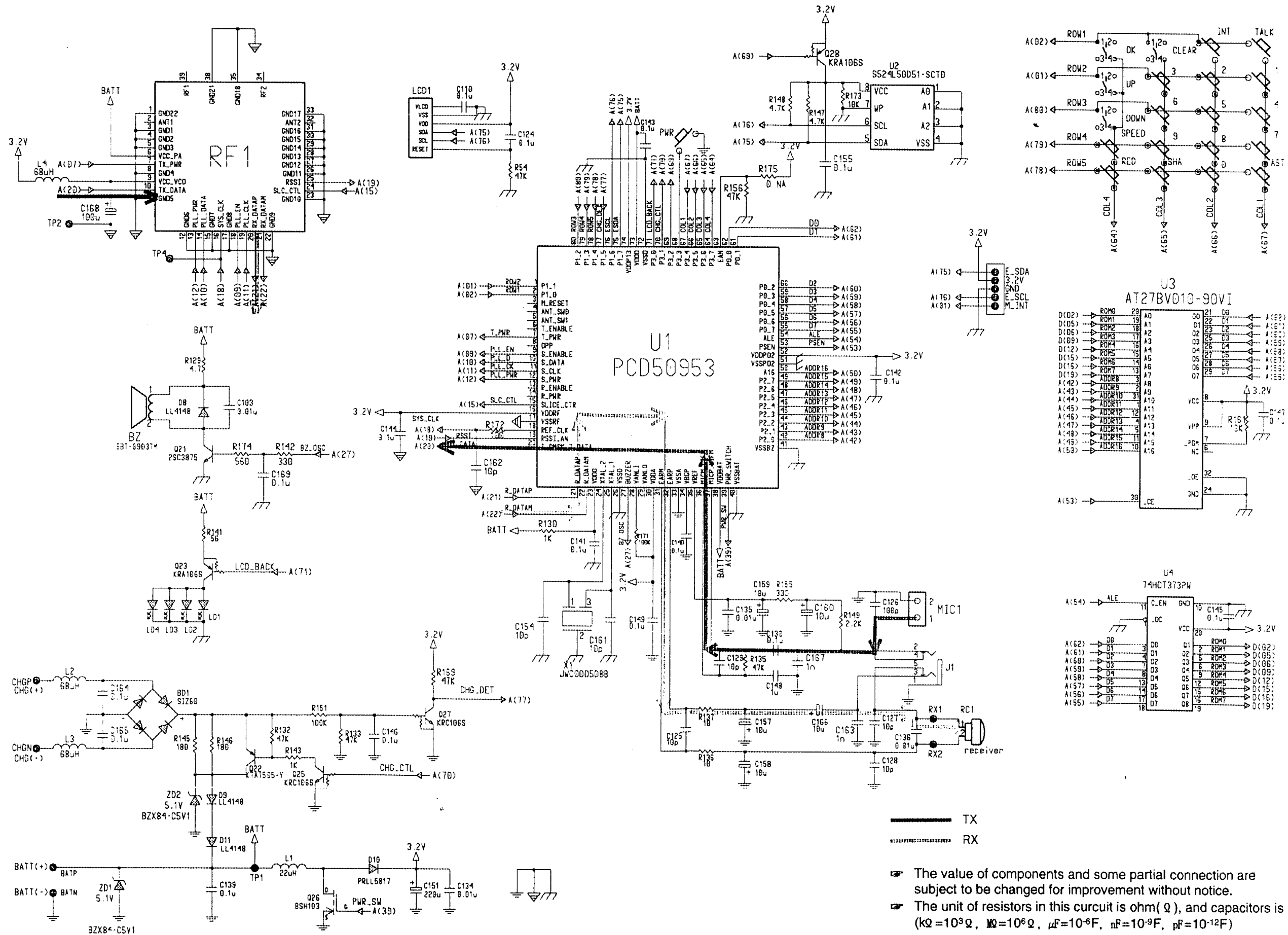
5.3 FUNCTION PART OF BASE

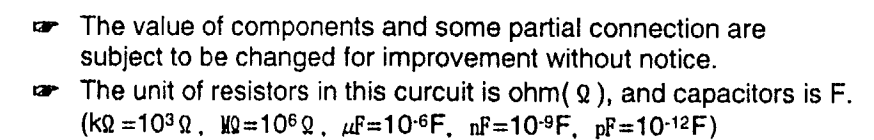


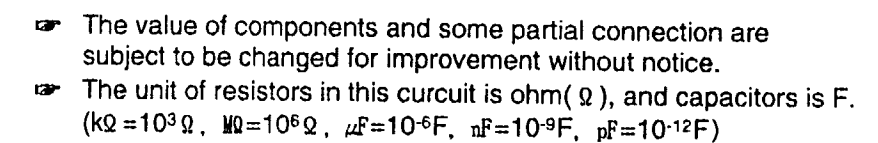
TX
RX

- The value of components and some partial connection are subject to be changed for improvement without notice.
- The unit of resistors in this circuit is ohm (Ω), and capacitors is F. ($k\Omega=10^3\Omega$, $M\Omega=10^6\Omega$, $\mu F=10^{-6}F$, $nF=10^{-9}F$, $pF=10^{-12}F$)

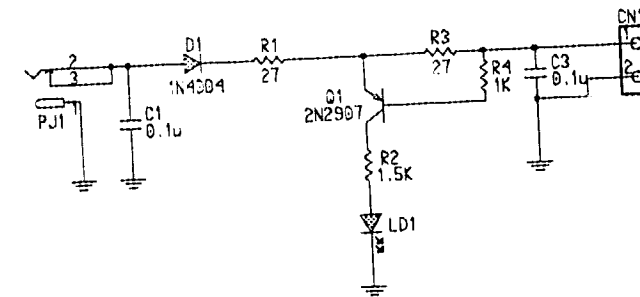
5.4 HANDSET







5.6 CHARGER PART OF HANDSET



- The value of components and some partial connection are subject to be changed for improvement without notice.
- The unit of resistors in this circuit is ohm (Ω), and capacitors is F.
($k\Omega = 10^3\Omega$, $M\Omega = 10^6\Omega$, $\mu F = 10^{-6}F$, $nF = 10^{-9}F$, $pF = 10^{-12}F$)