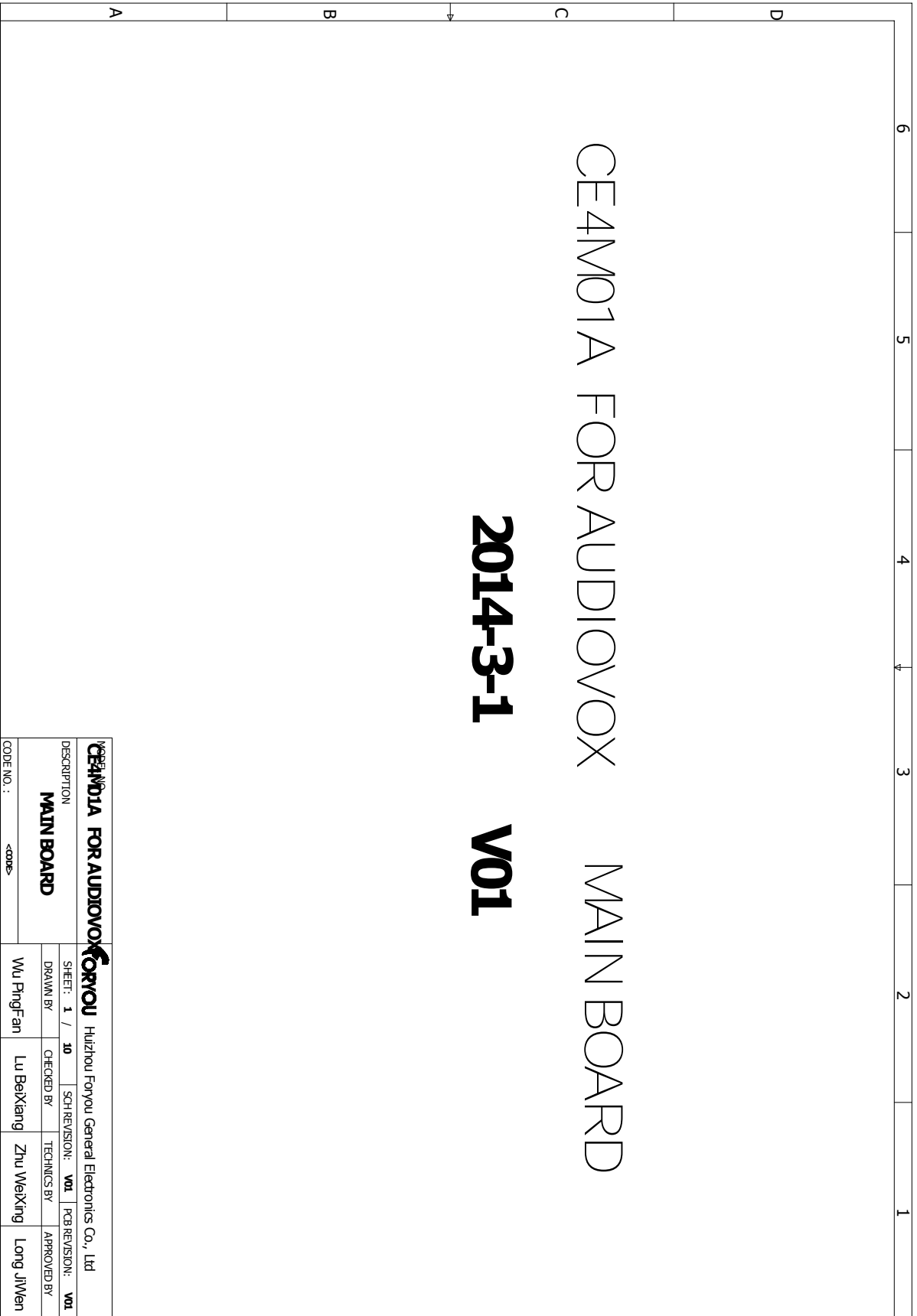


Service
Service



Service Manual

MAIN BOARD - CIRCUIT DIAGRAM

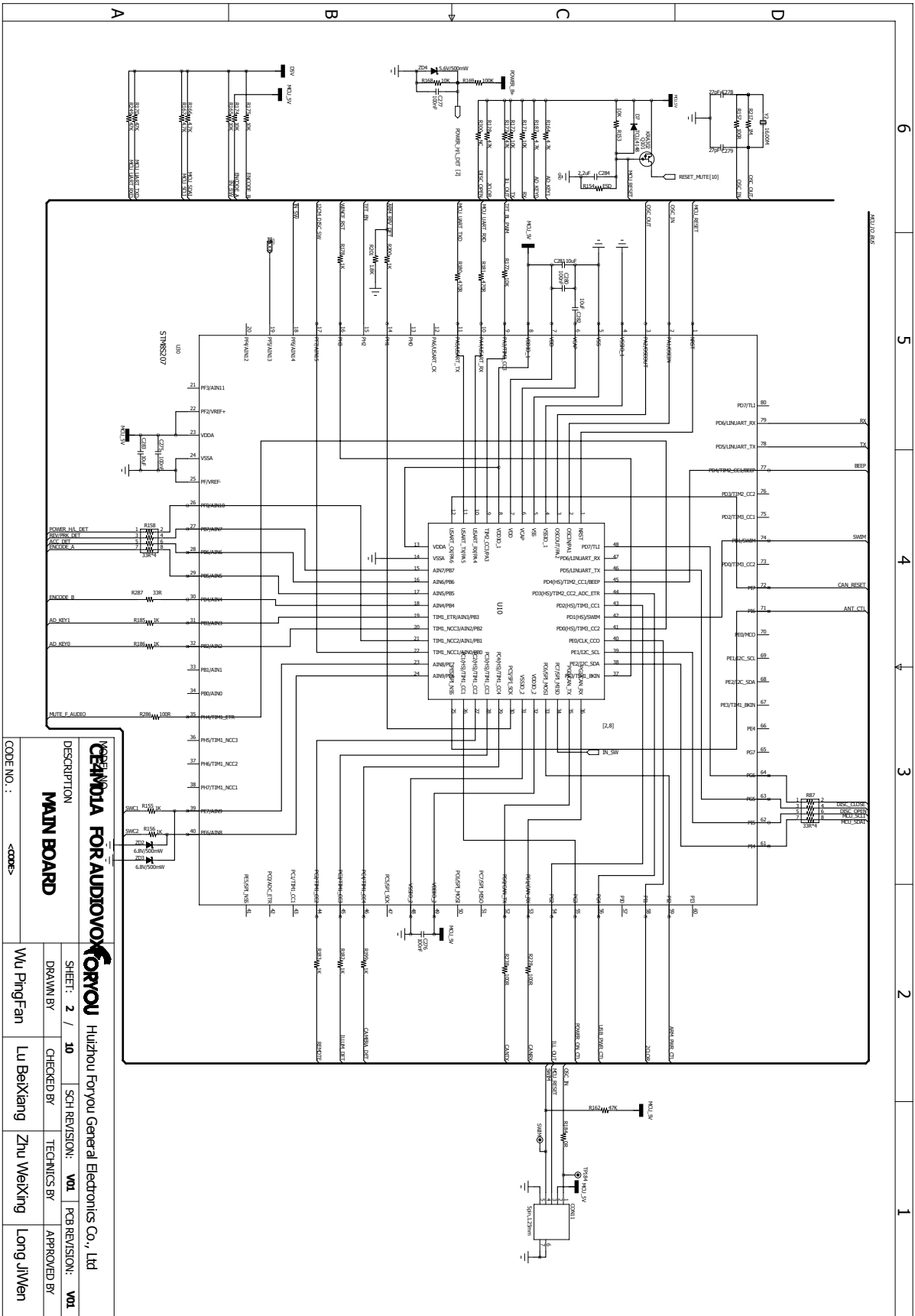


CE4M01A FOR AUDIOVOX MAIN BOARD

2014-3-1 V01

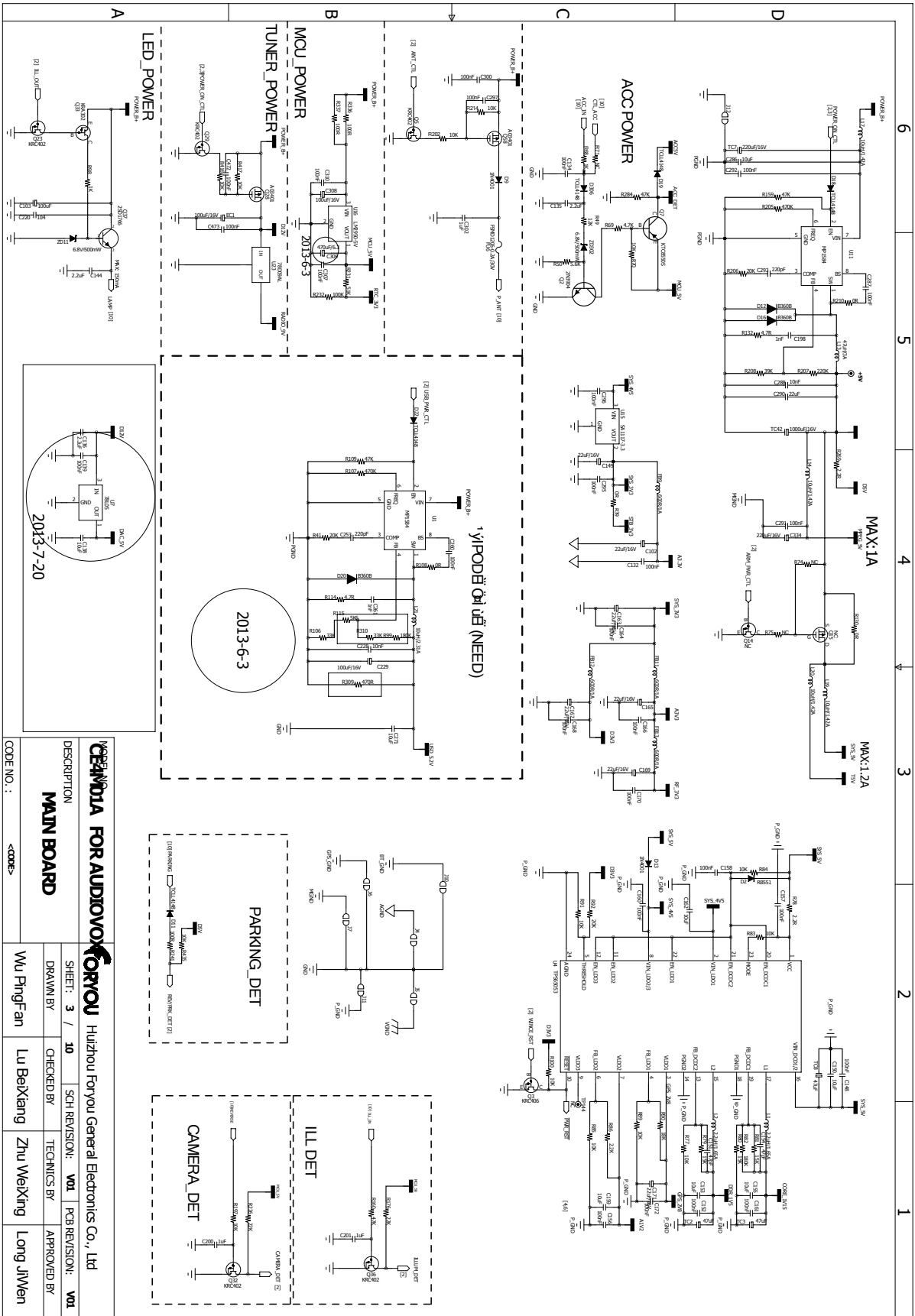
| | | | |
|---|--|--|-------------|
|  CE4M01A FOR AUDIOVOX | |  Huzhou Foryou General Electronics Co., Ltd | |
| DESCRIPTION | | SHEET: 1 / 10 | |
| MAIN BOARD | | CHECKED BY | TECHNICS BY |
| CODE NO. : <code> | | Wu PingFan | Lu BeiXiang |
| | | | Zhu WeiXing |
| | | | Long JiWen |
| | | | |

MAIN BOARD - CIRCUIT DIAGRAM



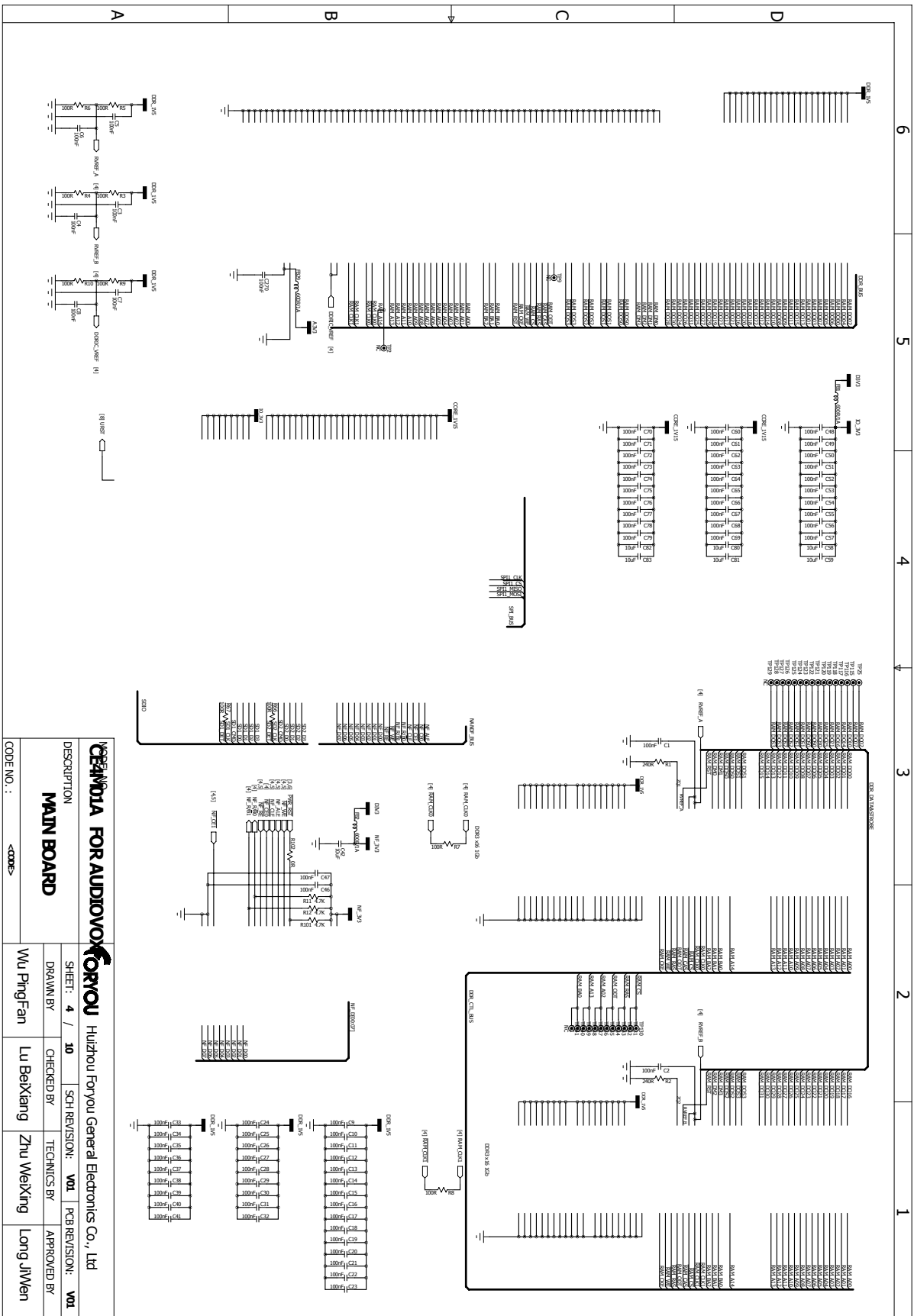
| | | | |
|--------------------|--------------|--|-------------------|
| DESCRIPTION | | FOR YOU | |
| MAIN BOARD | | Huizhou Foryou General Electronics Co., Ltd | |
| SHEET: 2 / 10 | CHECKED BY: | SCH REVISION: V01 | PCB REVISION: V01 |
| DRAWN BY: | TECHNICS BY: | | |
| Wu PingFan | Lu BeiXiang | Zhu WeiXing | Long JiuWen |
| CODE NO.: <CODE> | | | |

MAIN BOARD - CIRCUIT DIAGRAM



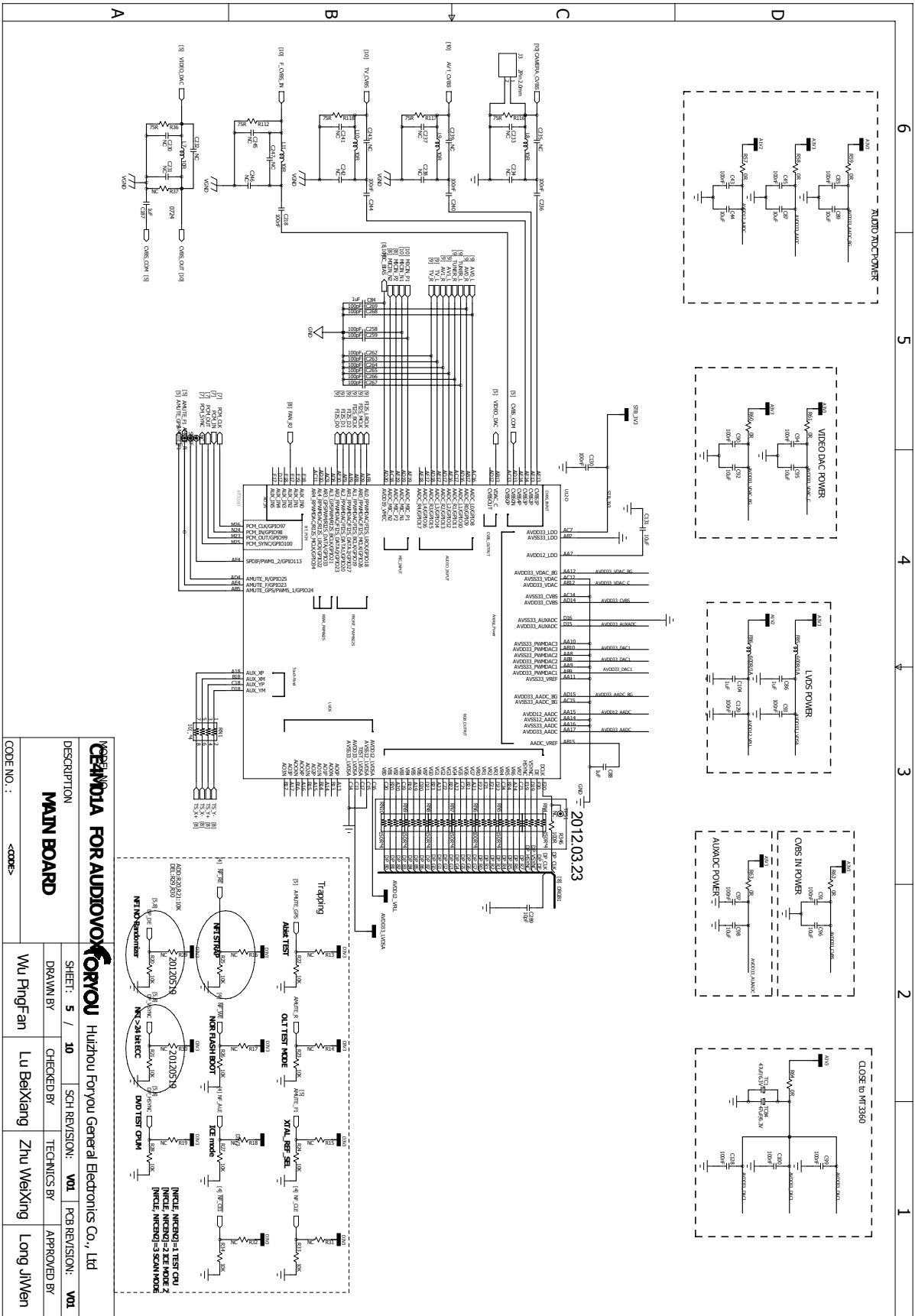
| | | | |
|------------------------------------|--------|---|--------------|
| CEANOLA FOR AUDIOVOX FORYOU | | Huizhou Foryou General Electronics Co., Ltd | |
| DESCRIPTION | | MAIN BOARD | |
| DRAWN BY | 3 / 10 | SCH REVISION: | V01 |
| CHECKED BY | | TECHNICS BY | V01 |
| APPROVED BY | | PCB REVISION: | V01 |
| CODE NO.: | <CODE> | WU PingFan | Lu BeiKiang |
| | | | Zhu WeiKiang |
| | | | Long JiWen |

MAIN BOARD - CIRCUIT DIAGRAM



| | | | |
|---|--|-------------------|--|
| CEANDA FOR AUDIOVOX FORYOU | | | |
| Huizhou Foryou General Electronics Co., Ltd | | | |
| DESCRIPTION | | | |
| MAIN BOARD | | | |
| DRAWN BY | | SHEET: 4 / 10 | |
| CHECKED BY | | SCH REVISION: V01 | |
| TECHNICS BY | | PCB REVISION: V01 | |
| APPROVED BY | | | |
| Wu PingFan | | Lu BeiXiang | |
| Zhu WeiXing | | Long JiWen | |
| CODE NO.: <CODE> | | | |

MAIN BOARD - CIRCUIT DIAGRAM



FOR YOU Huizhou Foryou General Electronics Co., Ltd

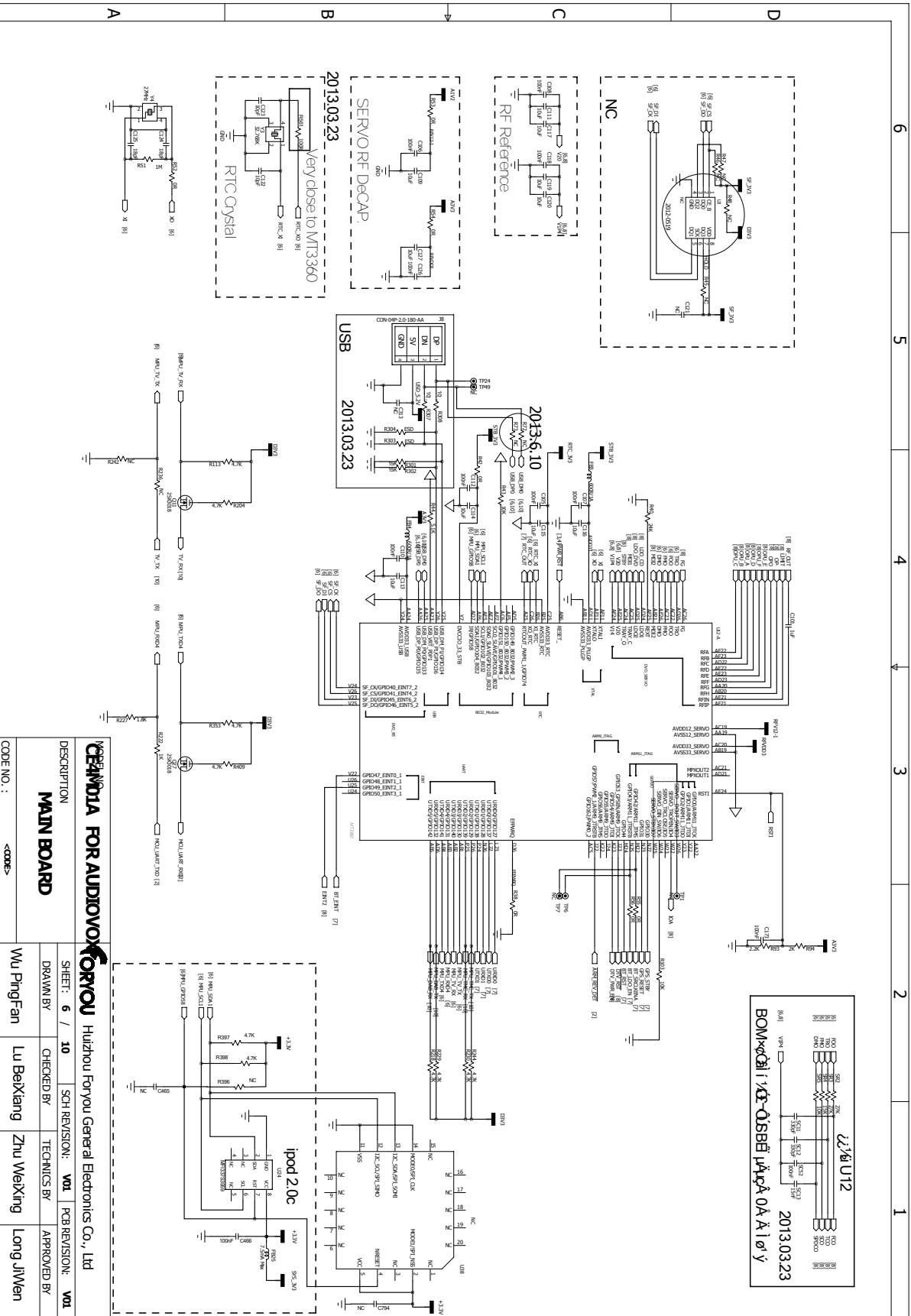
DESCRIPTION
MAIN BOARD

CODE NO.: <CODE>

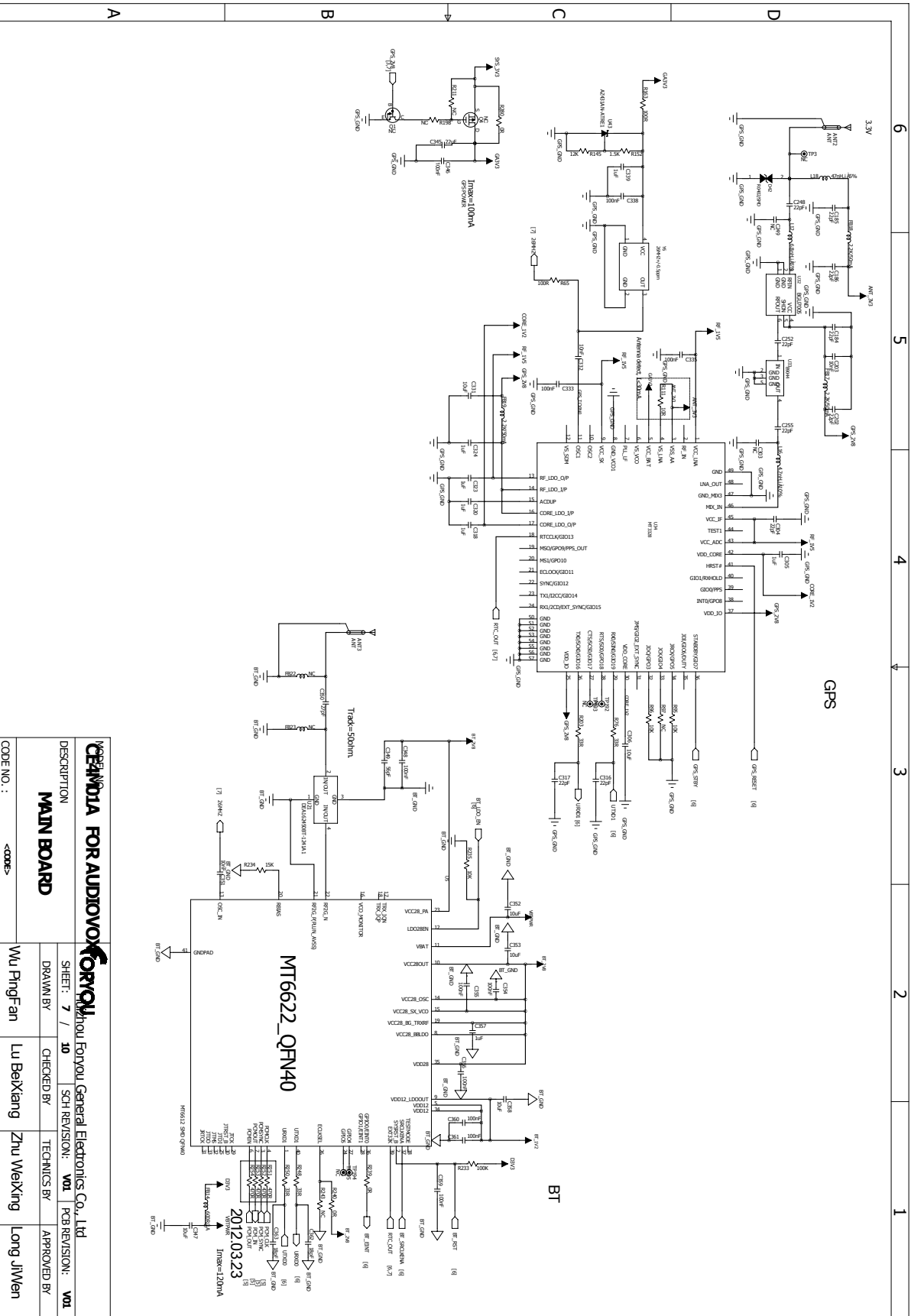
| | |
|-------------|-------------|
| DESIGNED BY | WU PINGFAN |
| CHECKED BY | LU BEIXIANG |
| TECHNICS BY | ZHU WEIXING |
| APPROVED BY | LONG JIWEN |

SHEET: 5 / 10
SCH REVISION: V01
PCB REVISION: V01

MAIN BOARD - CIRCUIT DIAGRAM

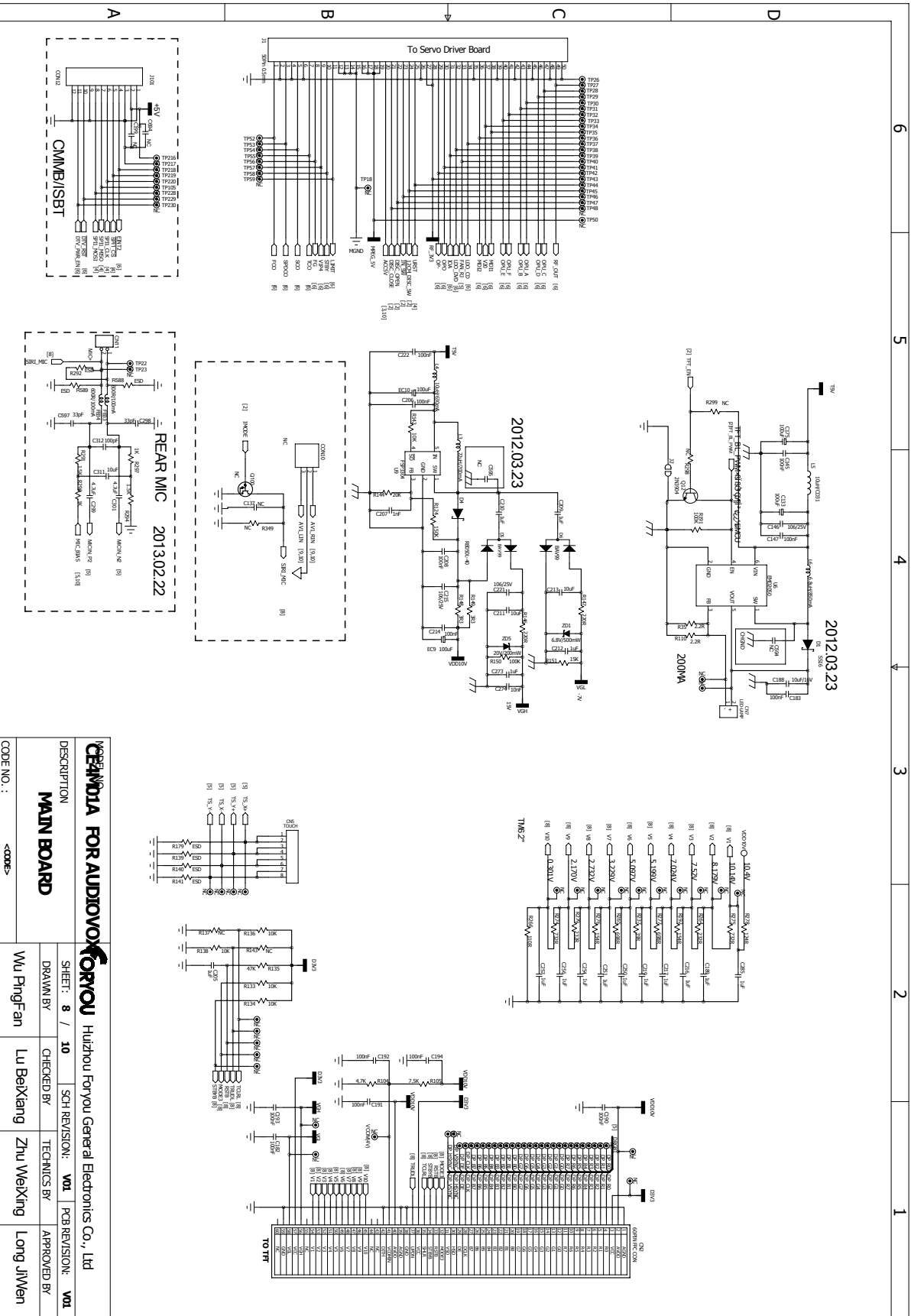


MAIN BOARD - CIRCUIT DIAGRAM



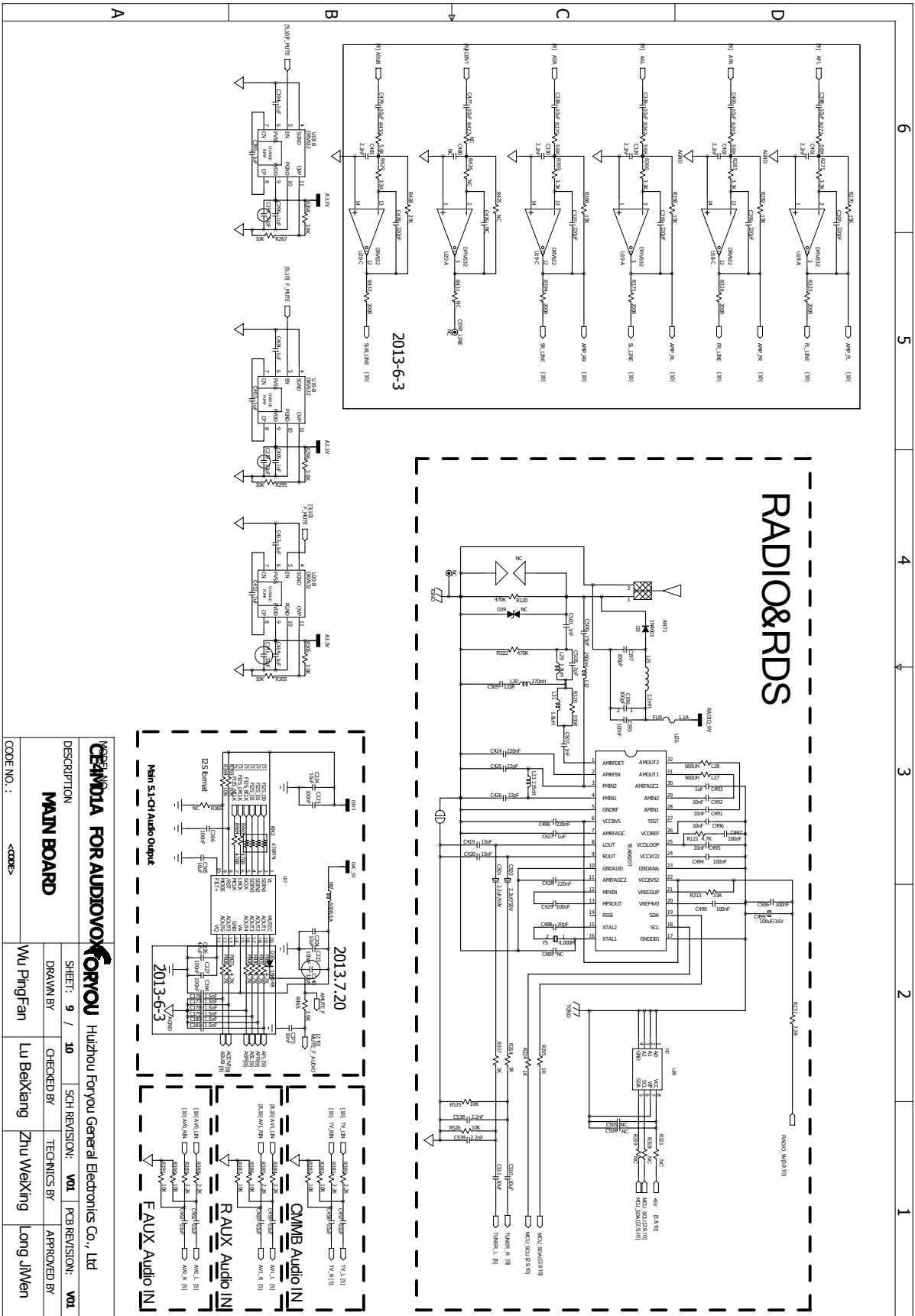
| | | | |
|-------------------------------------|------------|-------------------------------------|-------------|
| FORNOL | | FORNOL | |
| Fornou General Electronics Co., Ltd | | Fornou General Electronics Co., Ltd | |
| DESCRIPTION | | DESCRIPTION | |
| MAIN BOARD | | MAIN BOARD | |
| DRAWN BY | Wu PingFan | CHECKED BY | Lu BeiXiang |
| SHEET: 7 / 10 | | TECHNICAL BY | Zhu WeiXing |
| SCH REVISION: V01 | | APPROVED BY | Long JiWen |
| PCB REVISION: V01 | | | |
| CODE NO. : <CODE> | | | |

MAIN BOARD - CIRCUIT DIAGRAM



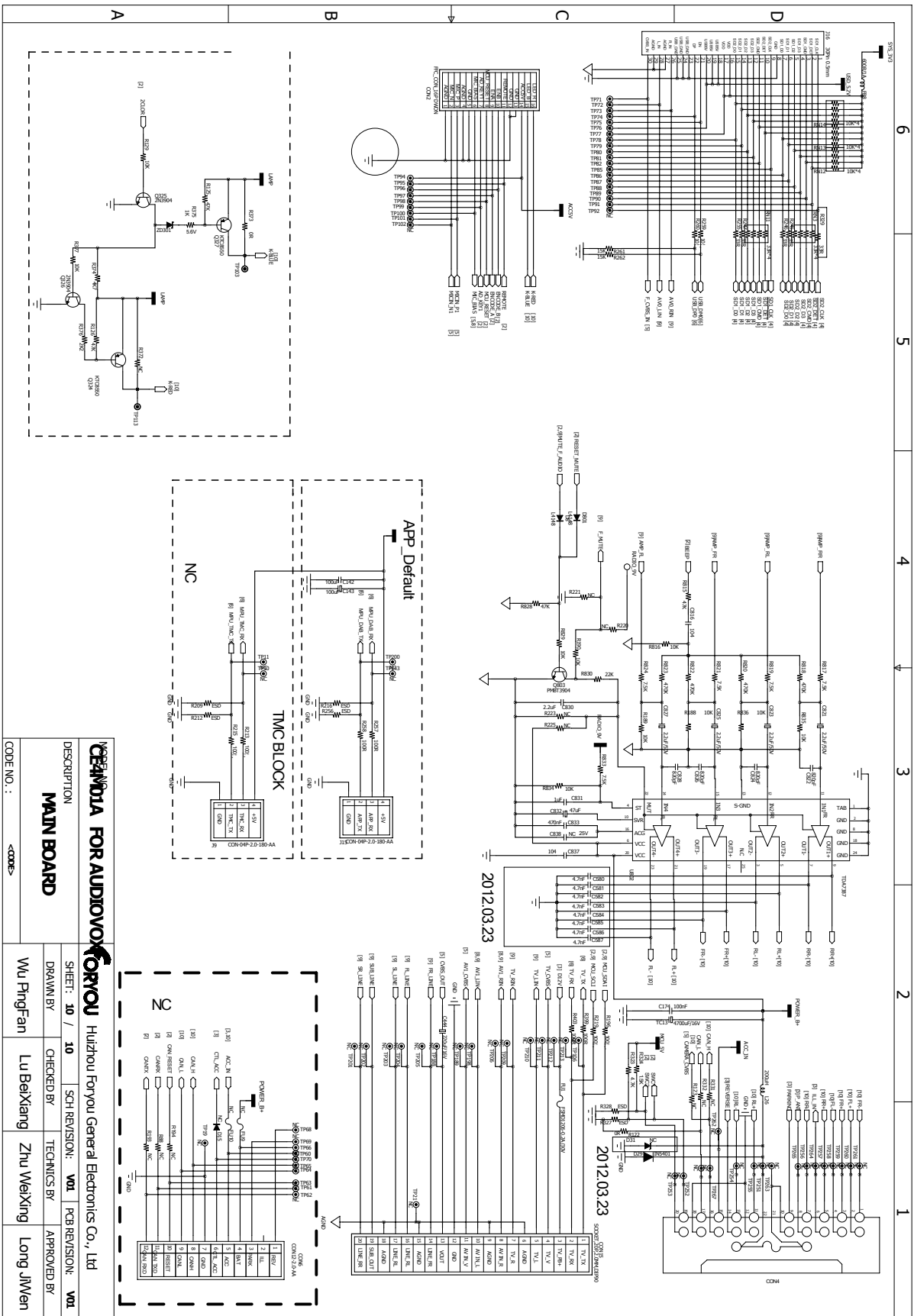
| | | | |
|---|------------|-------------|---------------|
| GENERAL FOR AUDIOVOX FORYOU | | | |
| Huizhou Foryou General Electronics Co., Ltd | | | |
| MAIN BOARD | | | |
| DESCRIPTION | DRAWN BY | CHECKED BY | SCH REVISION: |
| | Wu PingFan | Lu BeiXiang | V01 |
| CODE NO.: | <CODE> | TECHNICS BY | APPROVED BY |
| | | Zhu WeiKing | V01 |
| | | Long JiWen | |

MAIN BOARD - CIRCUIT DIAGRAM



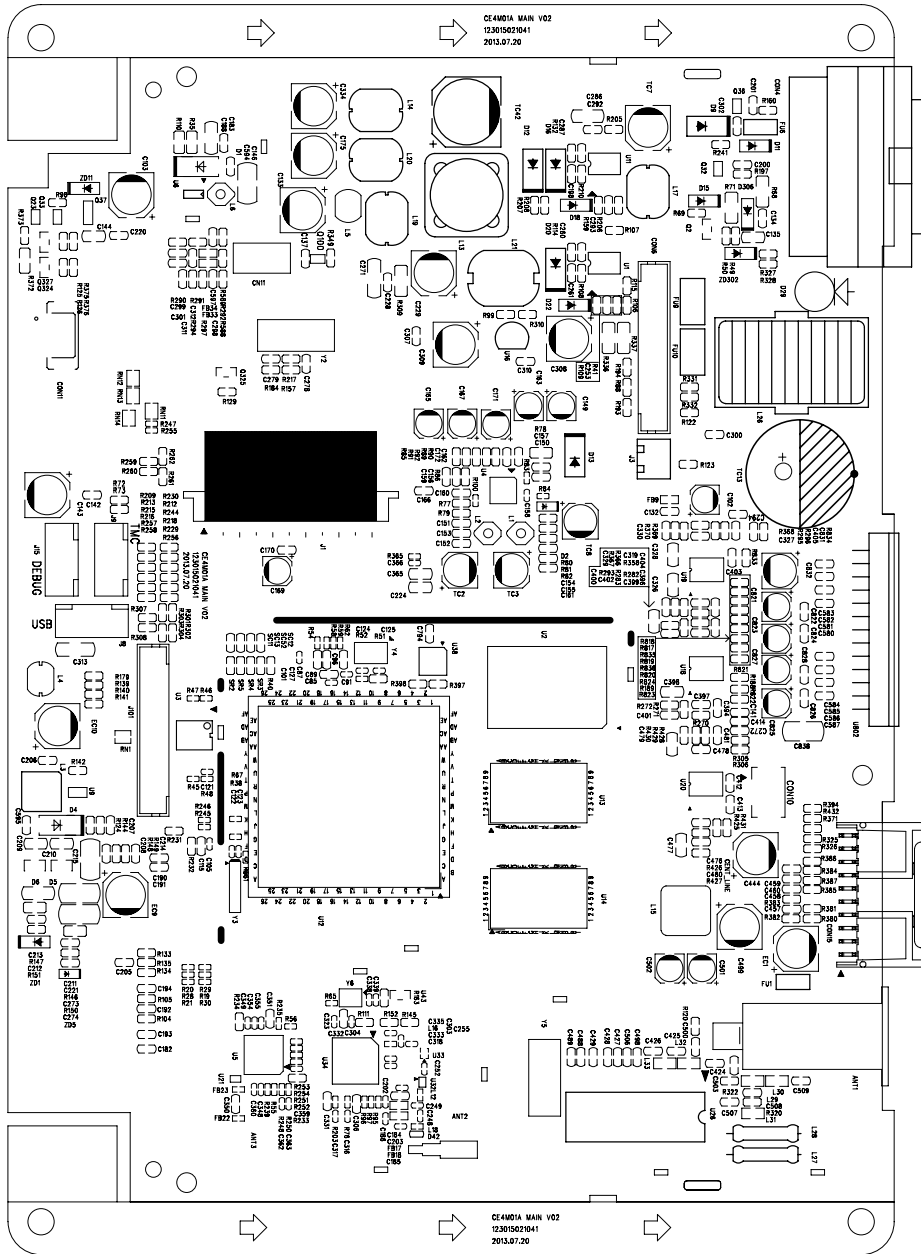
| | |
|---|--|
| CEANDA FOR AUDIOVOX FORYOU Huizhou Foryou General Electronics Co., Ltd | |
| DESCRIPTION MAIN BOARD | |
| SHEET: 9 / 10 DRAWN BY: Wu PingFan CHECKED BY: Lu BeiXiang TECHNICS BY: Zhu WeiXing APPROVED BY: Long JiWen | SCH REVISION: V01 PCB REVISION: V01 |
| CODE NO.: <CODE> | |

MAIN BOARD - CIRCUIT DIAGRAM

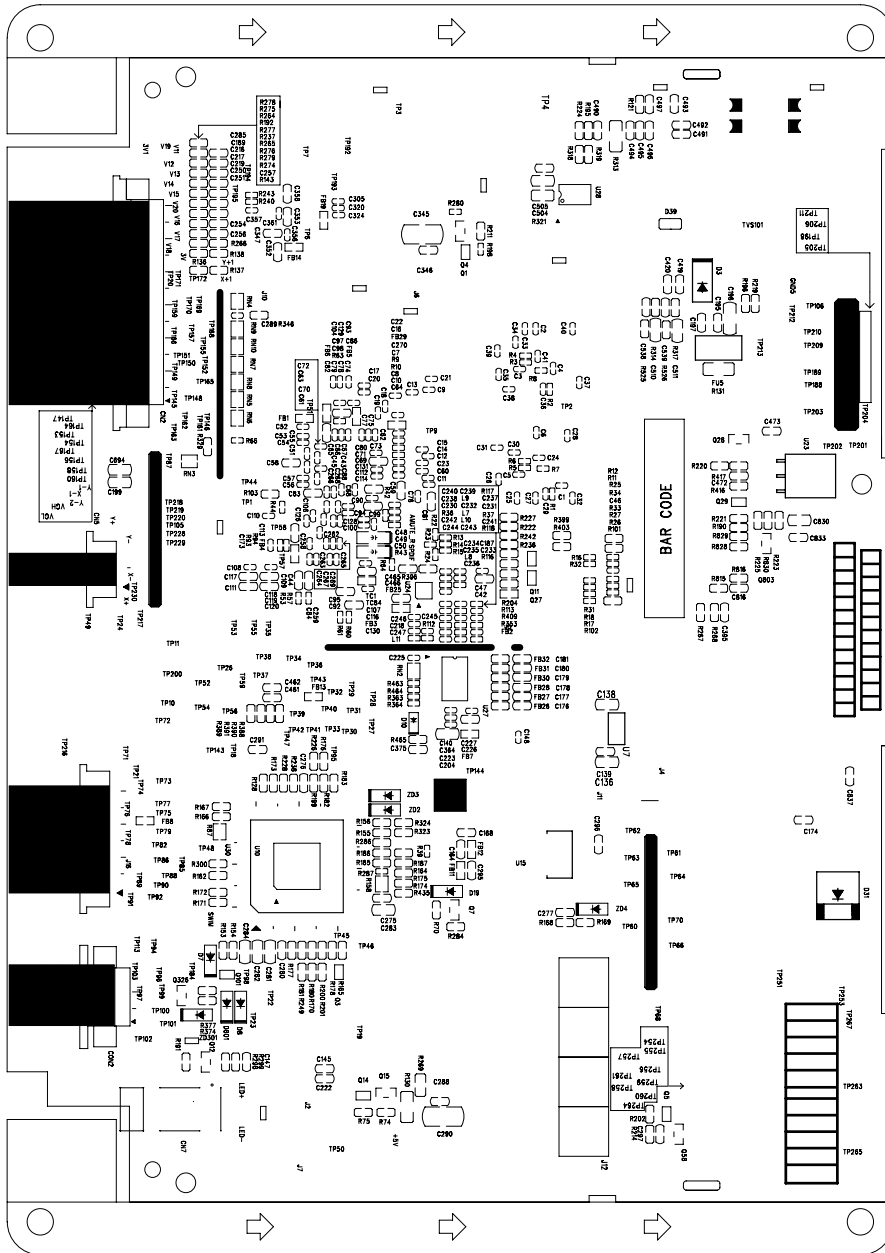


| | |
|--|-------------------|
| CEANDA FOR AUDIOVOX FORYOU Huizhou Foryou General Electronics Co., Ltd | |
| DESCRIPTION | MAIN BOARD |
| DRAWN BY | Wu PingFan |
| CHECKED BY | Lu BeiXiang |
| TECHNICS BY | Zhu WeiXing |
| APPROVED BY | Long JiWen |
| SHEET: 10 / 10 | SCH REVISION: V01 |
| PCB REVISION: V01 | |
| CODE NO.: | <CODE> |

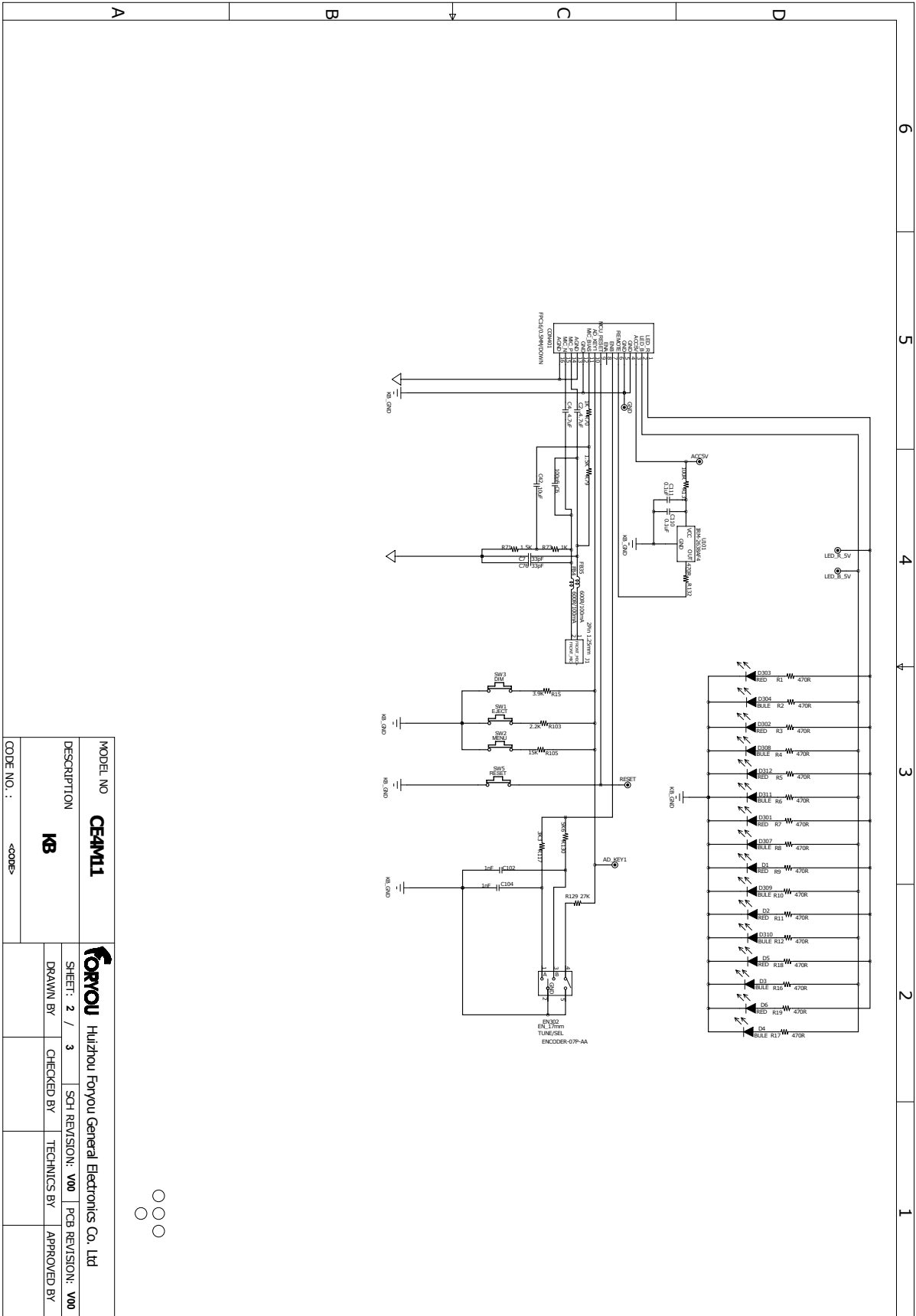
MAIN BOARD - PCB LAYOUT TOP VIEW



MAIN BOARD - PCB LAYOUT BOTTOM VIEW



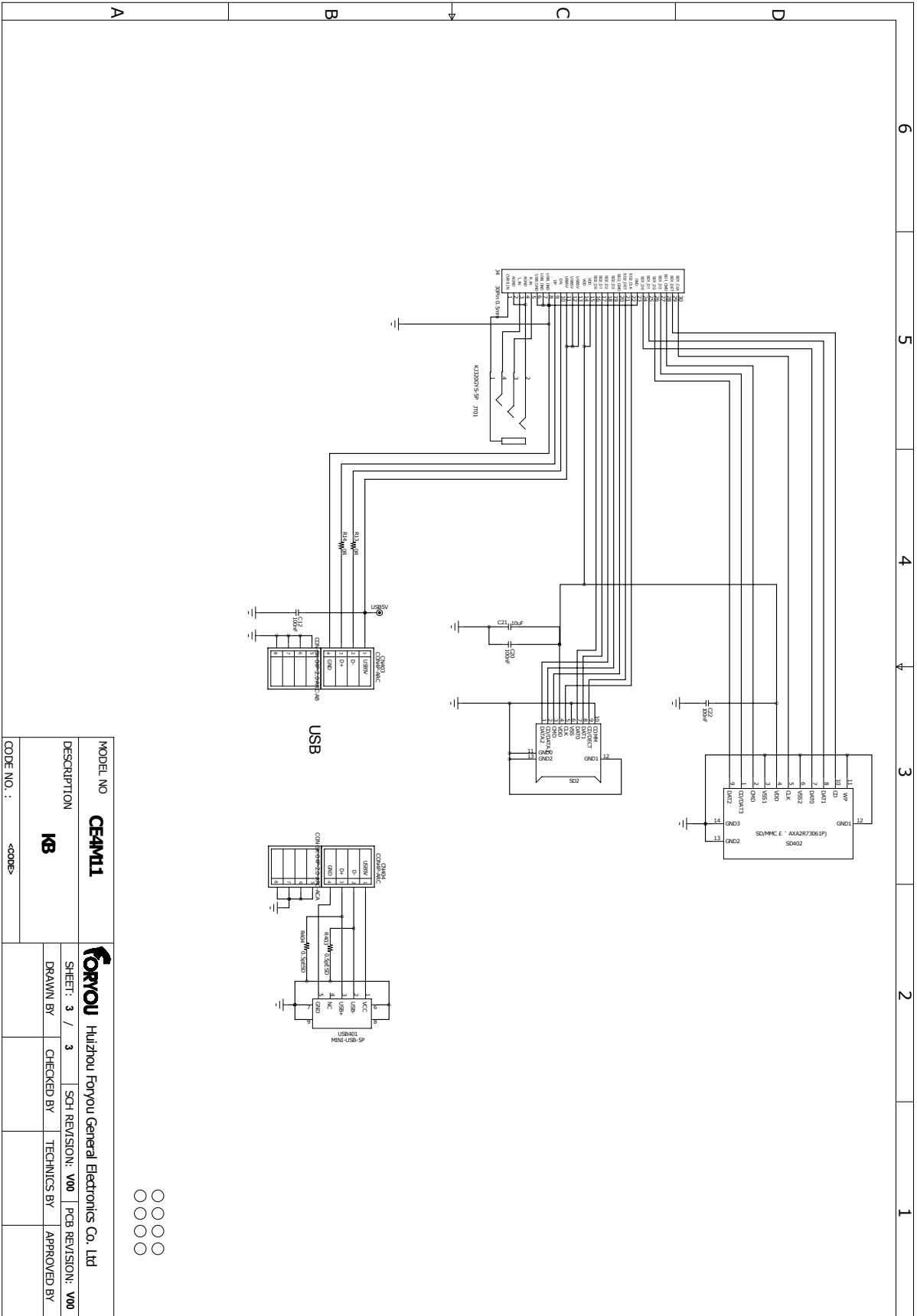
KB BOARD - LAYOUT DIAGRAM



| | | | |
|--|---------------------------------------|-------------|-------------|
| MODEL NO | CE4M11 | | |
| DESCRIPTION | KB | | |
| CODE NO. : | <CODE> | | |
| FORYOU Huizhou Foryou General Electronics Co. Ltd | | | |
| SHEET: 2 / 3 | SCH REVISION: V00 PCB REVISION: V00 | | |
| DRAWN BY | CHECKED BY | TECHNICS BY | APPROVED BY |



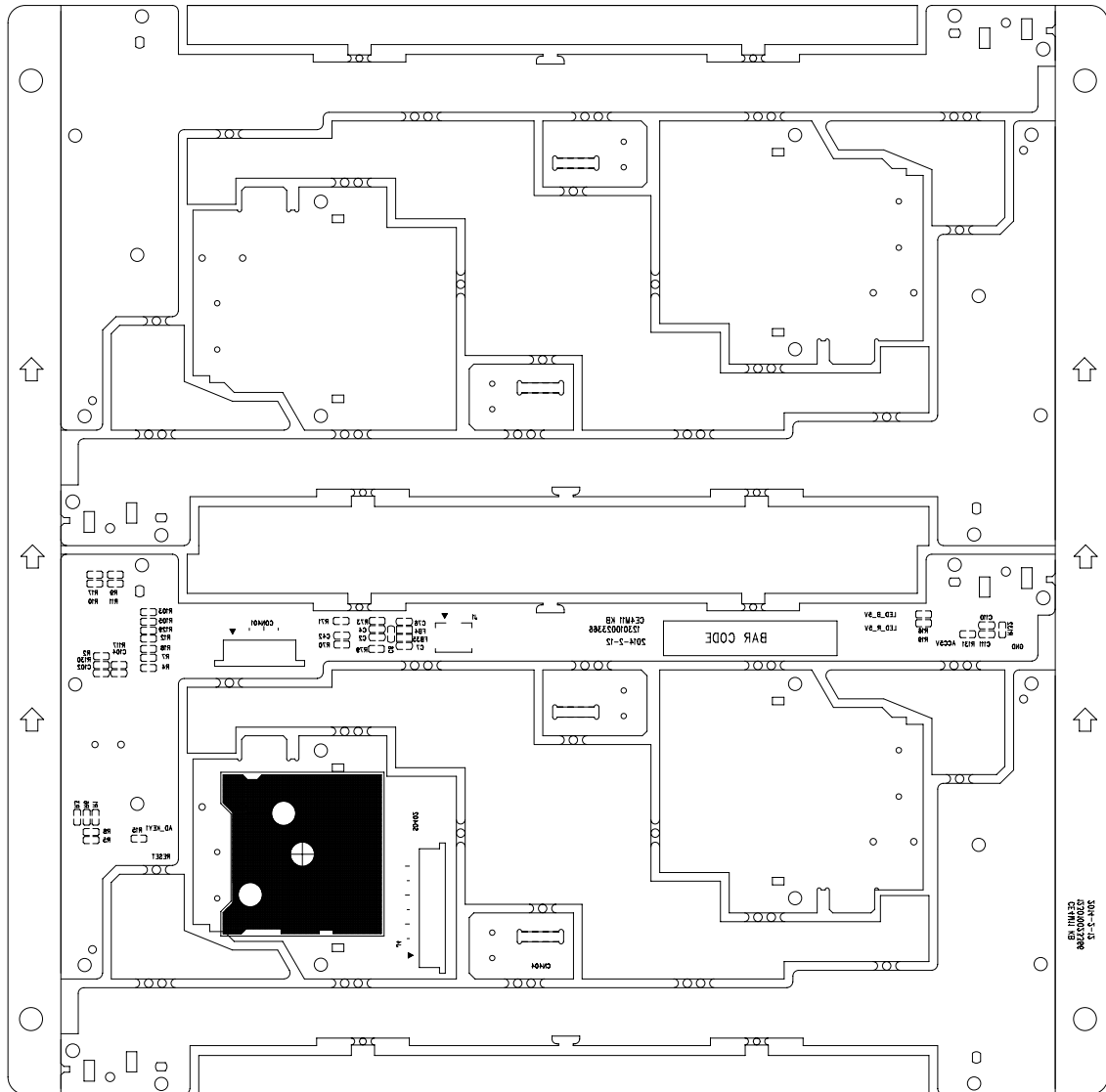
KB BOARD - LAYOUT DIAGRAM



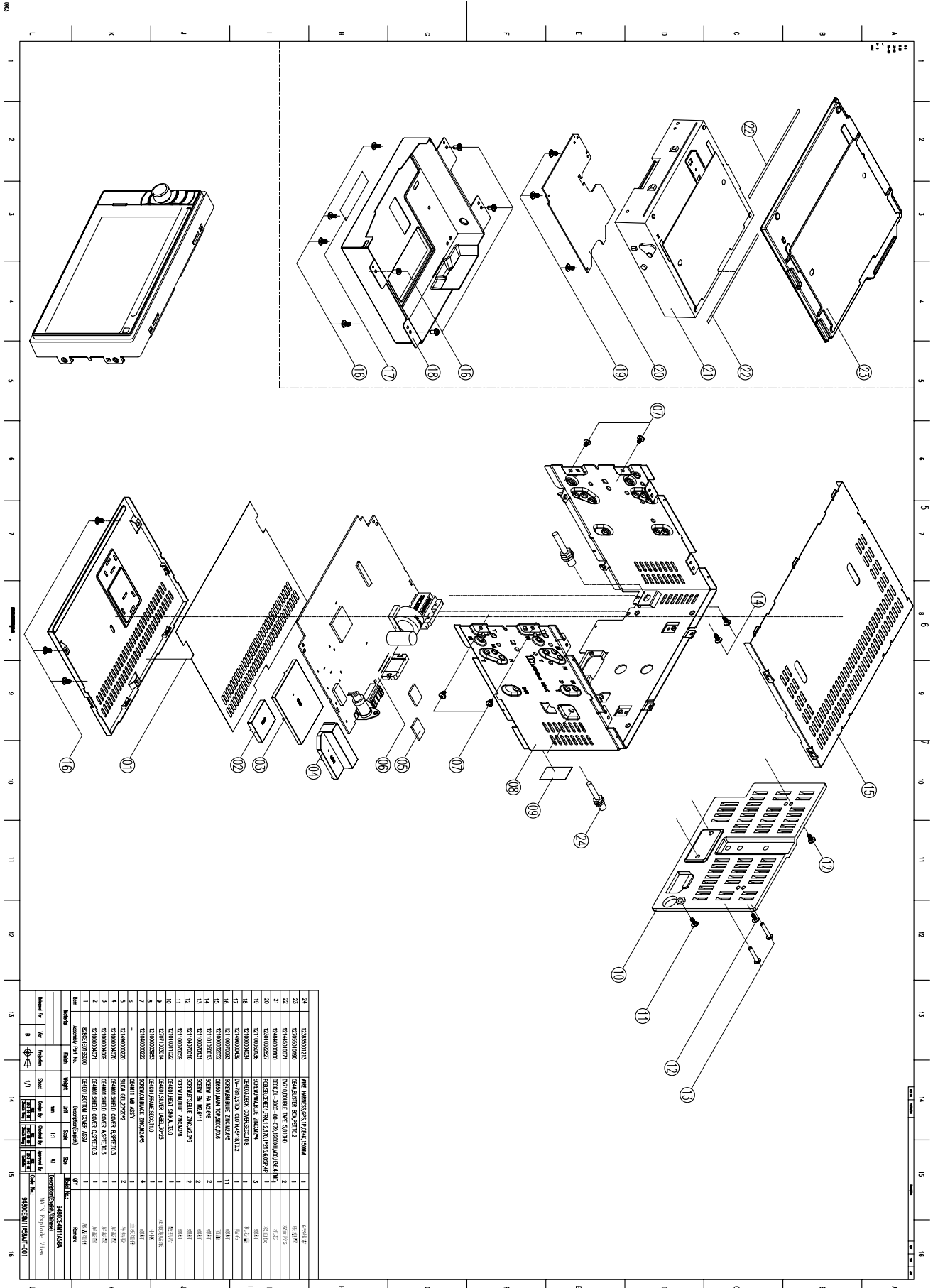
| | | | |
|-------------|---------------|---|---------------------------------------|
| MODEL NO | CEAM11 | Foryou Huzhou Foryou General Electronics Co. Ltd | |
| DESCRIPTION | KB | SHEET: 3 / 3 | SCM REVISION: V00 PCB REVISION: V00 |
| CODE NO.: | <CODE> | DRAWN BY | CHECKED BY |
| | | TECHNICS BY | APPROVED BY |

○ ○ ○ ○

KB BOARD - PCB LAYOUT BOTTOM VIEW

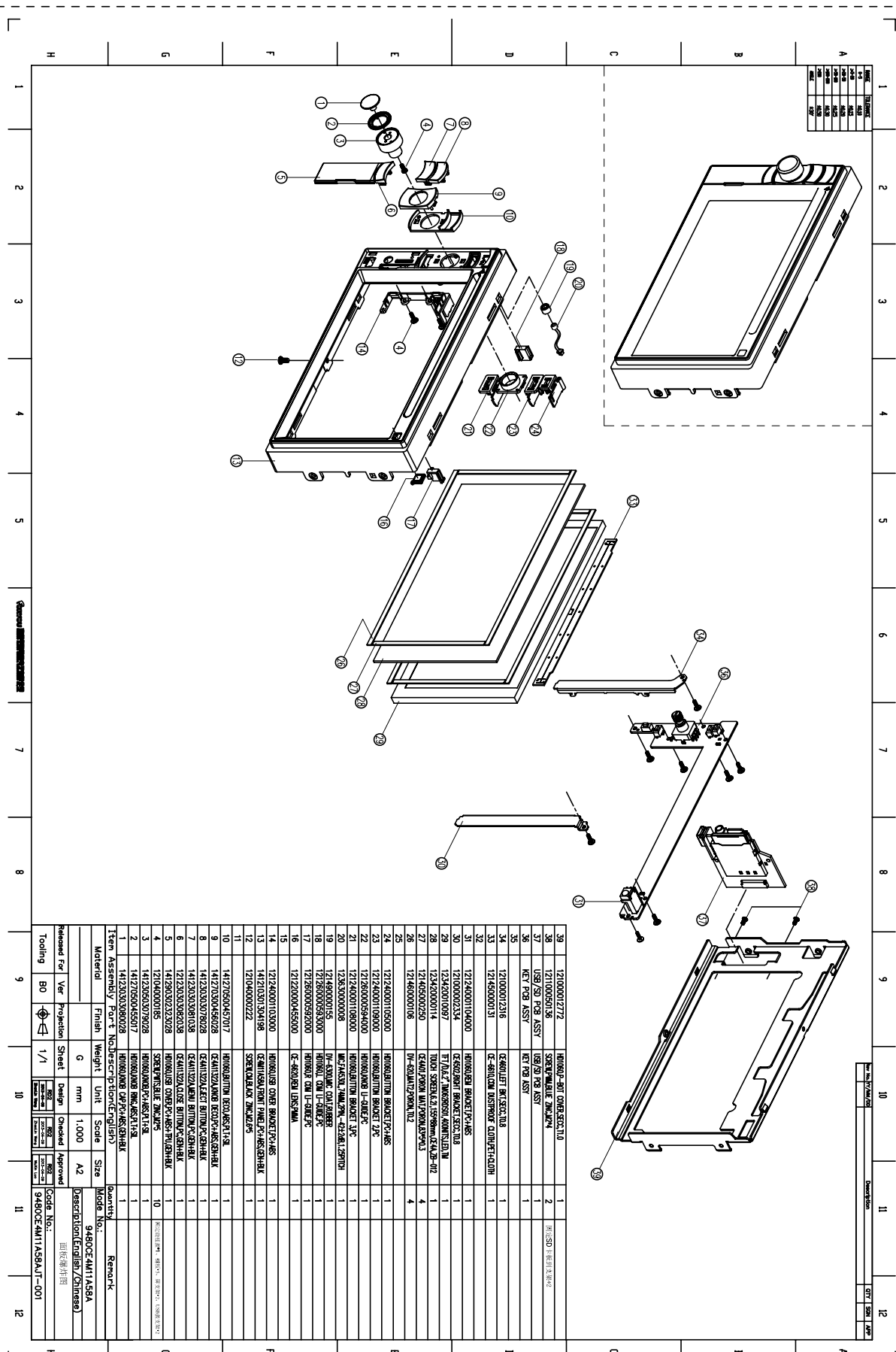


EXPLODED VIEW - MAIN UNIT



| Part No. | Part Name | Qty | Unit | Remarks |
|----------|--------------|-----|------|---------|
| 1 | FRONT PANEL | 1 | PCB | |
| 2 | KEYPAD | 1 | PCB | |
| 3 | DISPLAY | 1 | PCB | |
| 4 | MAIN BOARD | 1 | PCB | |
| 5 | POWER SUPPLY | 1 | PCB | |
| 6 | RELAY | 1 | PCB | |
| 7 | TRANSISTOR | 1 | PCB | |
| 8 | RESISTOR | 1 | PCB | |
| 9 | DIODE | 1 | PCB | |
| 10 | INDICATOR | 1 | PCB | |
| 11 | CONNECTOR | 1 | PCB | |
| 12 | SCREW | 1 | PCB | |
| 13 | WASHER | 1 | PCB | |
| 14 | SPRING | 1 | PCB | |
| 15 | PLATE | 1 | PCB | |
| 16 | COVER | 1 | PCB | |
| 17 | KEY | 1 | PCB | |
| 18 | KEY | 1 | PCB | |
| 19 | KEY | 1 | PCB | |
| 20 | KEY | 1 | PCB | |
| 21 | KEY | 1 | PCB | |
| 22 | KEY | 1 | PCB | |
| 23 | KEY | 1 | PCB | |
| 24 | KEY | 1 | PCB | |

EXPLORED VIEW - PANEL



| NO. | DESCRIPTION |
|-----|---------------|
| 1 | FRONT PANEL |
| 2 | FRONT BEZEL |
| 3 | FRONT BRACKET |
| 4 | FRONT BRACKET |
| 5 | FRONT BRACKET |
| 6 | FRONT BRACKET |
| 7 | FRONT BRACKET |
| 8 | FRONT BRACKET |
| 9 | FRONT BRACKET |
| 10 | FRONT BRACKET |
| 11 | FRONT BRACKET |
| 12 | FRONT BRACKET |

| NO. | PART NO. | DESCRIPTION | UNIT | QTY | REMARK |
|-----|------------------|---|------|-----|--------------|
| 39 | 12100001772 | HORIZONTAL ORG BRACKET 11.0 | | 1 | |
| 38 | 12100000158 | SPRING WHEEL BRACKET 4 | | 2 | 同30D 1個は2個必要 |
| 37 | 02912078 ASSY | ORG 78 ASSY | | 1 | |
| 36 | 02912079 ASSY | ORG 79 ASSY | | 1 | |
| 35 | 02912080 ASSY | ORG 80 ASSY | | 1 | |
| 34 | 12100002316 | CS4801LET REC SPEC 10.8 | | 1 | |
| 33 | 121460000131 | CS4801QDA REC SPEC 10.8 CLAMP/FIELD | | 1 | |
| 32 | | | | | |
| 31 | 1212400010400 | HORIZONTAL BRACKET P2-485 | | 1 | |
| 30 | 12100000234 | CS4802 BRKT BRACKET SPEC 10.8 | | 1 | |
| 29 | 12346000087 | ET 11.6 / 11.6mm 35mm ADJUSTABLE | | 1 | |
| 28 | 123460000114 | TOUCH SCREEN 21.5mm 480x480 | | 1 | |
| 27 | 121460000250 | CS4801 PORN W/TPORN 480x480 | | 4 | |
| 26 | 121460000106 | DI-6501172PORN 10.2 | | 4 | |
| 25 | | | | | |
| 24 | 1212400010500 | HORIZONTAL BRACKET P1-485 | | 1 | |
| 23 | 1212400010900 | HORIZONTAL BRACKET 2PC | | 1 | |
| 22 | 121280000594000 | HORIZONTAL U-CLAMP PC | | 1 | |
| 21 | 1212400010800 | HORIZONTAL BRACKET 1PC | | 1 | |
| 20 | 123630000008 | WCF 14.5x17.5mm 27mm 42x48 1.29T01 | | 1 | |
| 19 | 121480000195 | DI-650116 COM 1.6888 | | 1 | |
| 18 | 121280000592000 | HORIZONTAL U-CLAMP PC | | 1 | |
| 17 | 121280000592000 | HORIZONTAL U-CLAMP PC | | 1 | |
| 16 | 121220000455000 | CS-4801QDA 11.6x15.6mm | | 1 | |
| 15 | | | | | |
| 14 | 1212400010300 | HORIZONTAL ORG BRACKET P1-485 | | 1 | |
| 13 | 141210301304198 | CS4801QDA VORN PANEL P1-485 11.6x15.6mm | | 1 | |
| 12 | 121040000222 | SPRING WHEEL BRACKET 2PC | | 1 | |
| 11 | | | | | |
| 10 | 141210500457017 | HORIZONTAL BRACKET 11.6 | | 1 | |
| 9 | 141210500458028 | CS4801QDA VORN BRACKET 11.6x15.6mm | | 1 | |
| 8 | 141210500459028 | CS4801QDA VORN BRACKET 11.6x15.6mm | | 1 | |
| 7 | 12123000028028 | CS4801QDA VORN BRACKET 11.6x15.6mm | | 1 | |
| 6 | 1412800002323028 | HORIZONTAL ORG BRACKET 11.6x15.6mm | | 1 | |
| 5 | 121040000185 | SPRING WHEEL BRACKET 2PC | | 1 | |
| 4 | 141210500459028 | HORIZONTAL BRACKET 11.6 | | 1 | |
| 3 | 141210500458028 | HORIZONTAL BRACKET 11.6 | | 1 | |
| 2 | 141210500457017 | HORIZONTAL BRACKET 11.6 | | 1 | |
| 1 | 141210500456017 | HORIZONTAL BRACKET 11.6 | | 1 | |

| | | | | | | |
|----------|--------|--------|-------|-------|----------------|---------|
| Material | Finish | Weight | Unit | Scale | Size | Remarks |
| | G | mm | 1,000 | A2 | 9480CE4M11A58A | |

| | |
|------------------------|-------------------------------|
| Item Assembly Part No. | Description (English/Chinese) |
| 9480CE4M11A58A | 面屏零件图 |

| | | | | | | |
|---------|-----|------------|-------|--------|---------|----------|
| Tooling | Ver | Projection | Sheet | Design | Checked | Approved |
| B0 | 1/1 | | | | | |

| | |
|----------|-----------------------|
| Code No. | 9480CE4M11A58A-JT-001 |
|----------|-----------------------|