



# MINI COMPONENT SYSTEM

BASIC MODEL: MAX-DX75/DX76/DX79  
MAX-KX75

# **SERVICE** Manual

## MINI COMPONENT SYSTEM



## Features

- \* DVD/VCD/CD/MP3-CD/CD-R/RW Playback
- \* USB HOST
- \* Tuner
- \* Tape Deck

- Confidential -

# INDEX

## Ch1 | Precautions

1-1. Safety Precautions .....	1-1
1-2. Servicing Precautions .....	1-2
1-3. Precautions for Electrostatically Sensitive Device (ESDs) .....	1-3
1-4. Special Precautions and Warning Labels for Laser Products .....	1-4
1-5. Special Precautions for HDD .....	1-5

## Ch2 | Product Descriptions

1. Notes on Discs .....	2-1
2. Specifications .....	2-2
3. Accessories .....	2-3
4. Specification comparison .....	2-4

## Ch3 | How to disassemble

How to disassemble .....	3-1
--------------------------	-----

## Ch4 | Troubleshooting

1. MAIN .....	4-1
2. Output .....	4-2

## Ch5 | Exploded View & Parts List

1-1. Total Exploded View .....	5-1
1-2. Parts List of Exploded View .....	5-2
2. Electrical Parts List .....	5-3

## Ch6 | Wiring & PCB Diagram

1. Wiring Diagram .....	6-1
2-1. MAIN PCB (TOP) .....	6-2
2-2. MAIN PCB (BOTTOM) .....	6-3
2-3. FRONT PCB .....	6-4

## Ch7 | Schematic Diagram

1. Block Diagram .....	7-1
2-1. MAIN circuit .....	7-2
2-2. FRONT circuit .....	7-3
2-3. MPEG circuit .....	7-4
2-4. AMP circuit .....	7-5
2-5. USB&VIDEO circuit .....	7-6
2-6. SMPS circuit .....	7-7

# 1. Precautions

Follow these safety, servicing and ESD precautions to prevent damage and protect against potential hazards such as electrical shock and X-rays.

## 1-1 Safety Precautions

1. Be sure that all of the built-in protective devices are replaced.
2. When reinstalling the chassis and its assemblies, be sure to restore all protective devices, including control knobs and compartment covers.
3. Make sure that there are no cabinet openings through which people--particularly children--might insert fingers and contact dangerous voltages. Such openings include the spacing between the picture tube and the cabinet mask, excessively wide cabinet ventilation slots, and improperly fitted back covers.
4. Design Alteration Warning:  
Never alter or add to the mechanical or electrical design of the unit. Example: Do not add auxiliary audio or video connectors. Such alterations might create a safety hazard. Also, any design changes or additions will void the manufacturer's warranty.
5. Leakage Current Hot Check (Figure 1-1):  
Warning: Do not use an isolation transformer during this test. Use a leakage-current tester or a metering system that complies with American National Standards Institute (ANSI C101.1, *Leakage Current for Appliances*), and Underwriters Laboratories (*UL Publication UL1410, 59.7*).

With the unit completely reassembled, plug the AC line cord directly into a 120V AC outlet. With the unit's AC switch first in the ON position and then OFF, measure the current between a known earth ground (metal water pipe, etc.) and all exposed metal parts. Examples: Handle brackets, metal cabinets, screwheads and control shafts. The current measured should not exceed 0.5 milliamp. Reverse the power-plug prongs in the AC outlet and repeat.

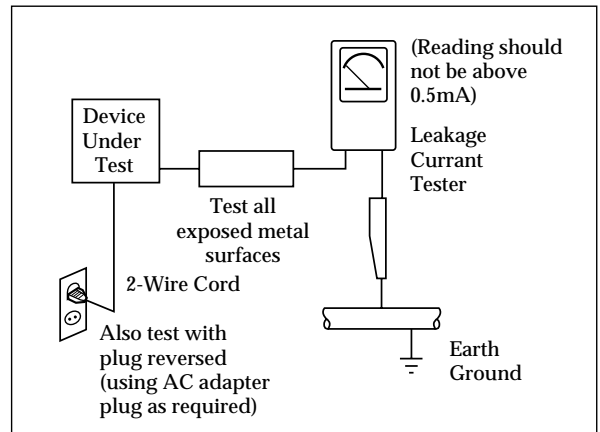


Fig. 1-1 AC Leakage Test

6. Insulation Resistance Cold Check:  
(1) With the unit's AC plug disconnected from the AC source, connect an electrical jumper across the two AC prongs. (2) Set the power switch to ON. (3) Measure the resistance between the shorted AC plug and any exposed metallic parts. Example: Screwheads, antenna, control shafts or handle brackets.

If any of the exposed metallic parts has a return path to the chassis, the measured resistance should be between 1 and 5.2 megohms. If there is no return path, the measured resistance should be "infinite." If the resistance is outside these limits, a shock hazard might exist. See Figure 1-2

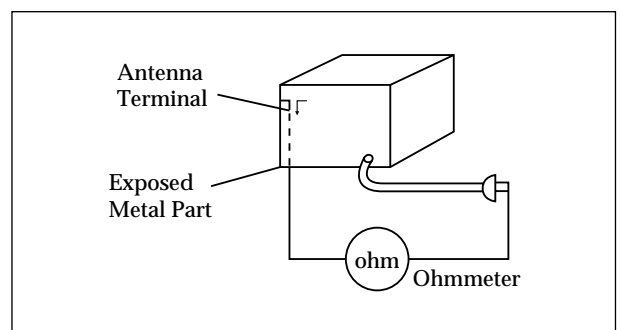




Fig. 1-2 Insulation Resistance Test

## 1-1 Safety Precautions (Continued)

7. Components, parts and wiring that appear to have overheated or that are otherwise damaged should be replaced with parts that meet the original specifications. Always determine the cause of damage or overheating, and correct any potential hazards
8. Observe the original lead dress, especially near the following areas: Antenna wiring, sharp edges, and especially the AC and high voltage power supplies. Always inspect for pinched, out-of-place, or frayed wiring. Do not change the spacing between components and the printed circuit board. Check the AC power cord for damage. Make sure that no wires or components touch thermally hot parts.
9. **Product Safety Notice:**  
Some electrical and mechanical parts have special safety-related characteristics which might not be obvious from visual inspection. These safety features and the protection they give might be lost if the replacement component differs from the original--even if the replacement is rated for higher voltage, wattage, etc.
10. Components that are critical for safety are indicated in the circuit diagram by shading,  or . Use replacement components that have the same ratings, especially for flame resistance and dielectric strength specifications. A replacement part that does not have the same safety characteristics as the original might create shock, fire or other hazards.

## 1-2 Servicing Precautions

**Warning1:** First read the "Safety Precautions" section of this manual. If some unforeseen circumstance creates a conflict between the servicing and safety precautions, always follow the safety precautions.

1. Servicing precautions are printed on the cabinet. Follow them.
2. Always unplug the unit's AC power cord from the AC power source before attempting to: (a) Remove or reinstall any component or assembly, (b) Disconnect an electrical plug or connector, (c) Connect a test component in parallel with an electrolytic capacitor.
3. Some components are raised above the printed circuit board for safety. An insulation tube or tape is sometimes used. The internal wiring may be clamped to prevent contact with thermally hot components. Reinstall all such elements to their original position.
4. After servicing, always check that the screws, components and wiring have been correctly reinstalled. Make sure that the portion around the serviced part has not been damaged.
5. Check the insulation between the blades of the AC plug and accessible conductive parts (examples: metal panels, input terminals and earphone jacks).
6. **Insulation Checking Procedure:** Disconnect the power cord from the AC source and turn the power switch ON. Connect an insulation resistance meter (500V) to the blades of the AC plug.  
  
The insulation resistance between each blade of the AC plug and accessible conductive parts (see above) should be greater than 1 megohm.
7. Never defeat any of the B+ voltage interlocks. Do not apply AC power to the unit (or any of its assemblies) unless all solid-state heat sinks are correctly installed.
8. Always connect a test instrument's ground lead to the instrument chassis ground *before* connecting the positive lead; always remove the instrument's ground lead last.



### 1-3 Precautions for Electrostatically Sensitive Devices (ESDs)

1. Some semiconductor ("solid state") devices are easily damaged by static electricity. Such components are called Electrostatically Sensitive Devices (ESDs). Examples include integrated circuits and some field-effect transistors. The following techniques will reduce the occurrence of component damage caused by static electricity.
2. Immediately before handling any semiconductor components or assemblies, drain the electrostatic charge from your body by touching a known earth ground. Alternatively, wear a discharging wrist-strap device. (Be sure to remove it prior to applying power--this is an electric shock precaution.)
3. After removing an ESD-equipped assembly, place it on a conductive surface such as aluminum foil to prevent accumulation of electrostatic charge.
4. Do not use freon-propelled chemicals. These can generate electrical charges that damage ESDs.
5. Use only a grounded-tip soldering iron when soldering or unsoldering ESDs.
6. Use only an anti-static solder removal device. Many solder removal devices are not rated as "anti-static" (these can accumulate sufficient electrical charge to damage ESDs).
7. Do not remove a replacement ESD from its protective package until you are ready to install it. Most replacement ESDs are packaged with leads that are electrically shorted together by conductive foam, aluminum foil or other conductive materials.
8. Immediately before removing the protective material from the leads of a replacement ESD, touch the protective material to the chassis or circuit assembly into which the device will be installed.
9. Minimize body motions when handling unpackaged replacement ESDs. Motions such as brushing clothes together, or lifting a foot from a carpeted floor can generate enough static electricity to damage an ESD.

### 1-4 Special Precautions and Warning Labels for Laser Products

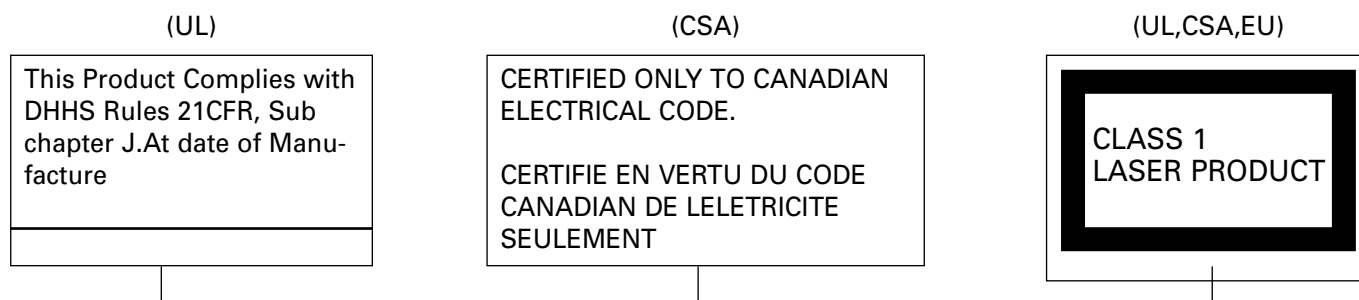


Fig. 1-3 Warning Labels (Location: Enclosure Block)

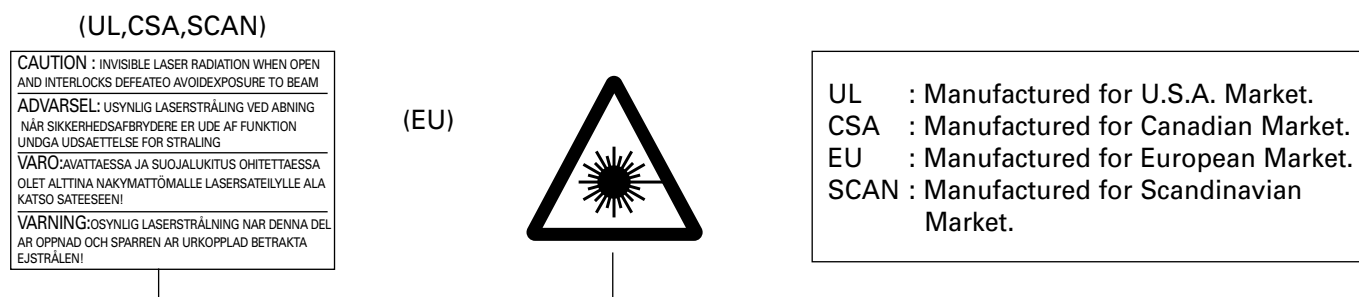


Fig. 1-4 Warning Labels (Location: Disc Clamper, Inner Side of Unit Door or Nearby Unit Chassis)

## 1-4 Special Precautions and Warning Labels for Laser Products (Continued)

### 1-4-1 Warnings

1. When servicing, do not approach the LASER exit with the eye too closely. In case it is necessary to confirm LASER beam emission, be sure to observe from a distance of more than 30 cm from the surface of the objective lens on the optical pick-up block.
2. Do not attempt to handle the objective lens when the DISC is not on the tray.

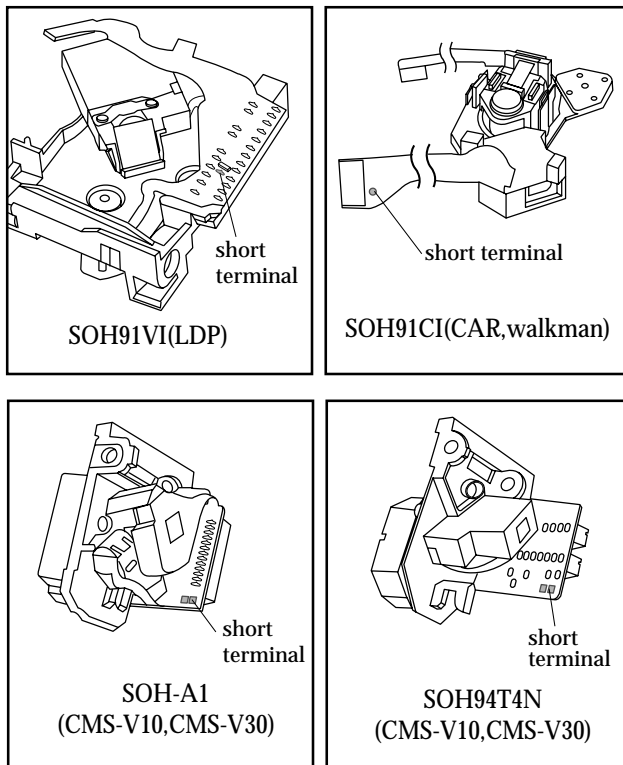
### 1-4-2 Laser Diode Specifications

Material: GaAs+ GaAlAs

Wavelength: 760-800 nm

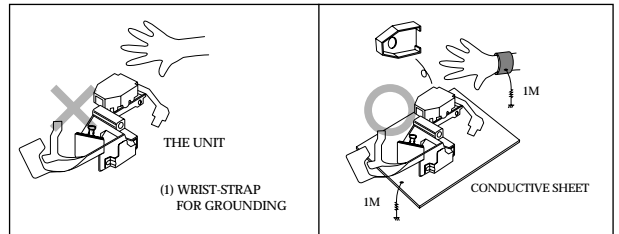
Emission Duration: Continuous

Laser Output: 0.2 mw (measured at a 1.6 mm distance from the objective lens surface on the optical pick-up block.)



### 1-4-3 Handling the Optical Pick-up

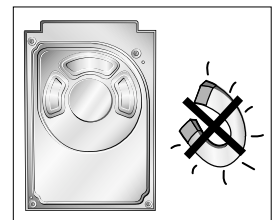
1. Static electricity from clothing or the body may cause electrostatic breakdown of the laser diode in the Optical Pickup. Follow this procedure:
2. Place a conductive sheet on the work bench (i.e., the black sheet used for wrapping repair parts.) Note: The surface of the work bench should be covered by a copper ground plane, which is grounded.
3. The repair technician must wear a wrist strap which is grounded to the copper sheet.
4. To remove the Optical Pickup block: Place the set on the conductive sheet, and momentarily touch the conductive sheet with both hands. (While working, do not allow any electrostatic sources--such as clothes--to touch the unit.)
5. Ground the "Short Terminal" (located on the PCB, inside the Pickup Assembly) before replacing the Pickup. This terminal should be shorted whenever the Pickup Assembly is lifted or moved.
6. After replacing the Pickup, reopen the Short Terminal. See diagrams below:



## 1-5 Special Precautions for HDD

### \* HDD Data Maintenance Step

1. Since the data on the HDD is weak to mechanical shock, place the HDD in a safe location that is free from mechanical shock once it is removed from the main unit.
2. In order to safe keep the data on the HDD, back up the data before the repair or make sure not to place the HDD near any electrical appliance that generates a strong magnetic field.



### 3. How to disassemble

**\* CAUTIONS**

1. To avoid damage to the product, follow the disassembly method in the Service Manual.
2. As some Semiconductor devices are very sensitive to static, ensure that all procedures are adhered to when handling ESD's.

**1. Disassemble the Side& Back& Top Cover**

1. Unfasten 8 screws on side Cover and Back Cover

2. Pull and Separate the side cover; Unfasten 2 screws

3. Pull the two hooks and lift the top cover with the Tape Deck; Unfasten 4 screws

4. Separate the Top cover with Tape Deck

**2. SMPS PCB Disassemble**

1. Unfasten 2 screws, Lift SMPS and Detach 3 Cables.

2. Unfasten 4 screws, Separate SMPS from Metallic shield

**3. Front Panel Disassemble**

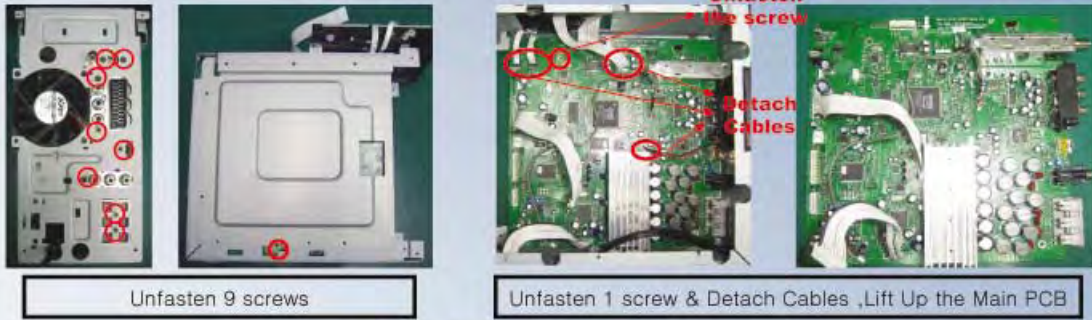
**4. Rear Cover Disassemble**

Detach 4 cables connected to Main PCB

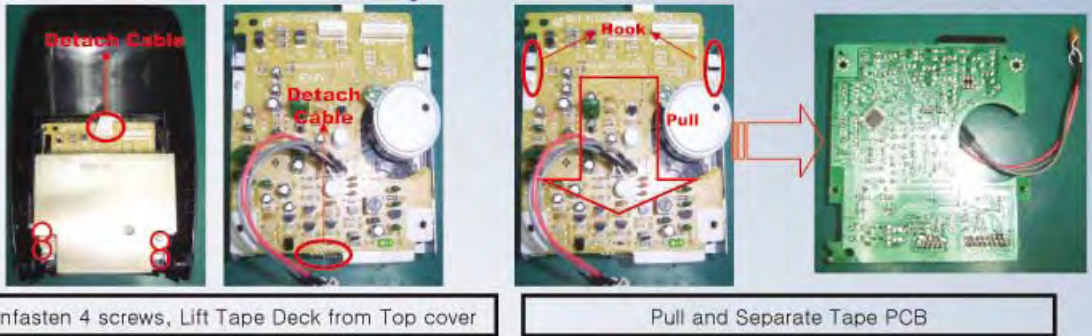
Push The four Hooks, Separate Rear Cover



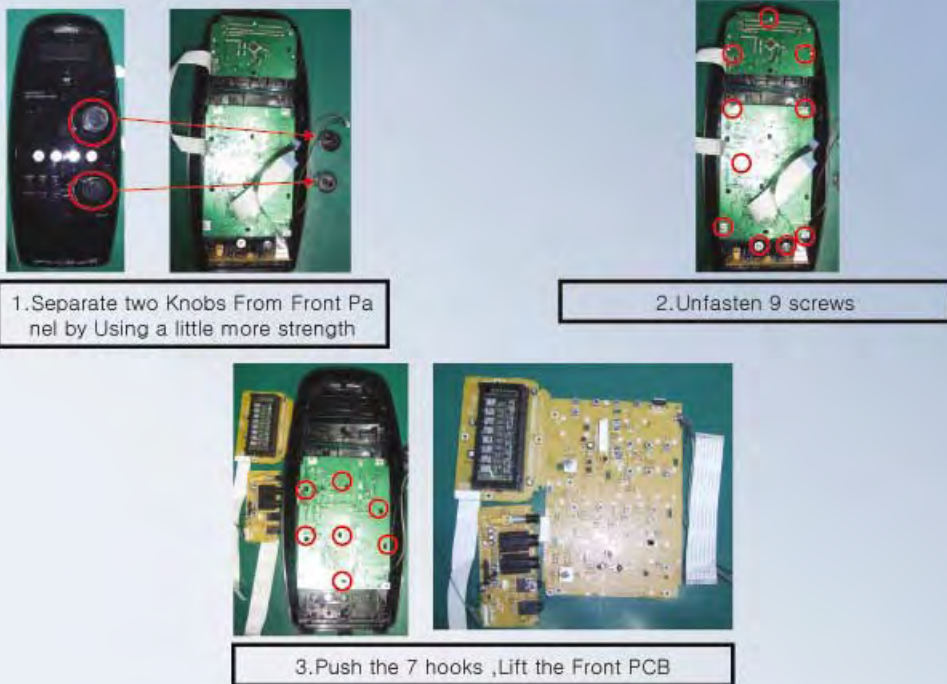
### 5. Main PCB Disassemble



### 6. Tape PCB Disassemble

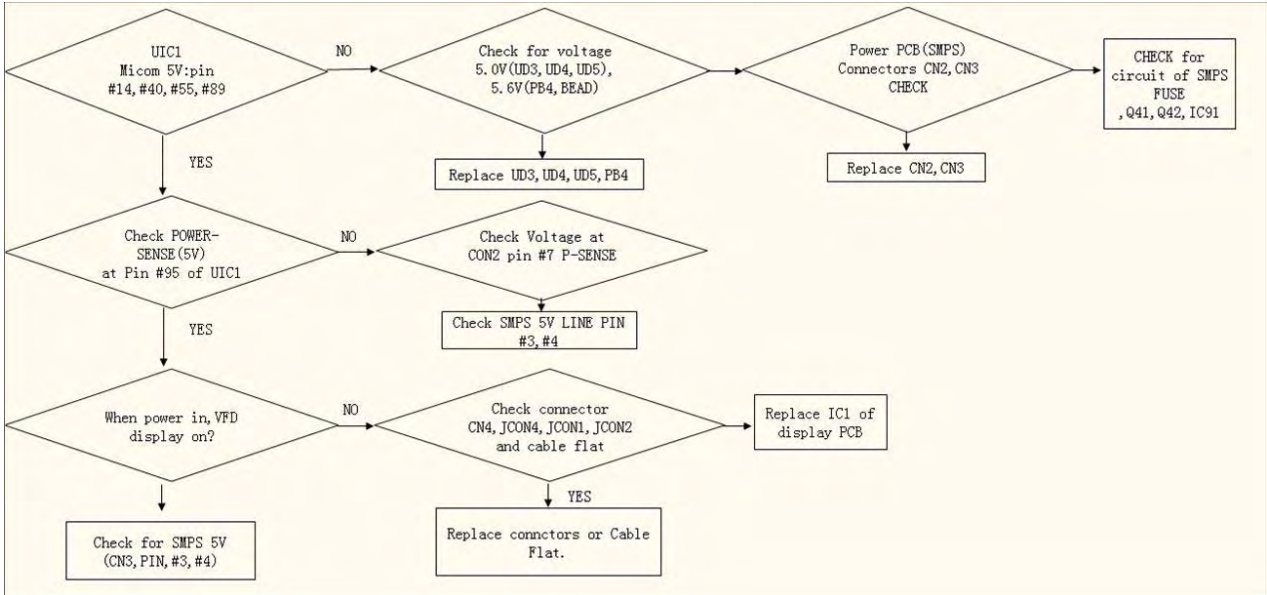


### 7. Front PCB Disassemble

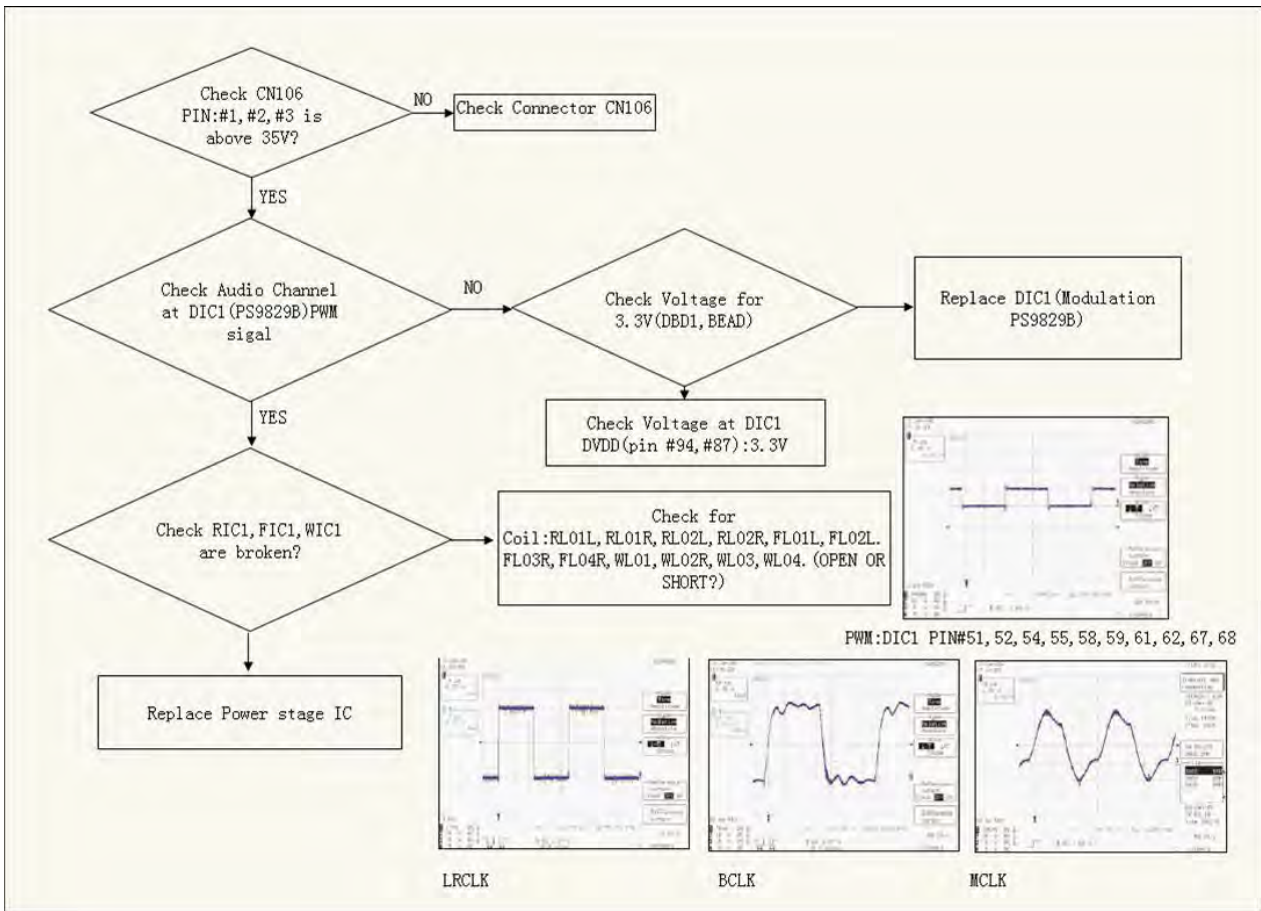


# 4. TroubleShooting

## MAIN

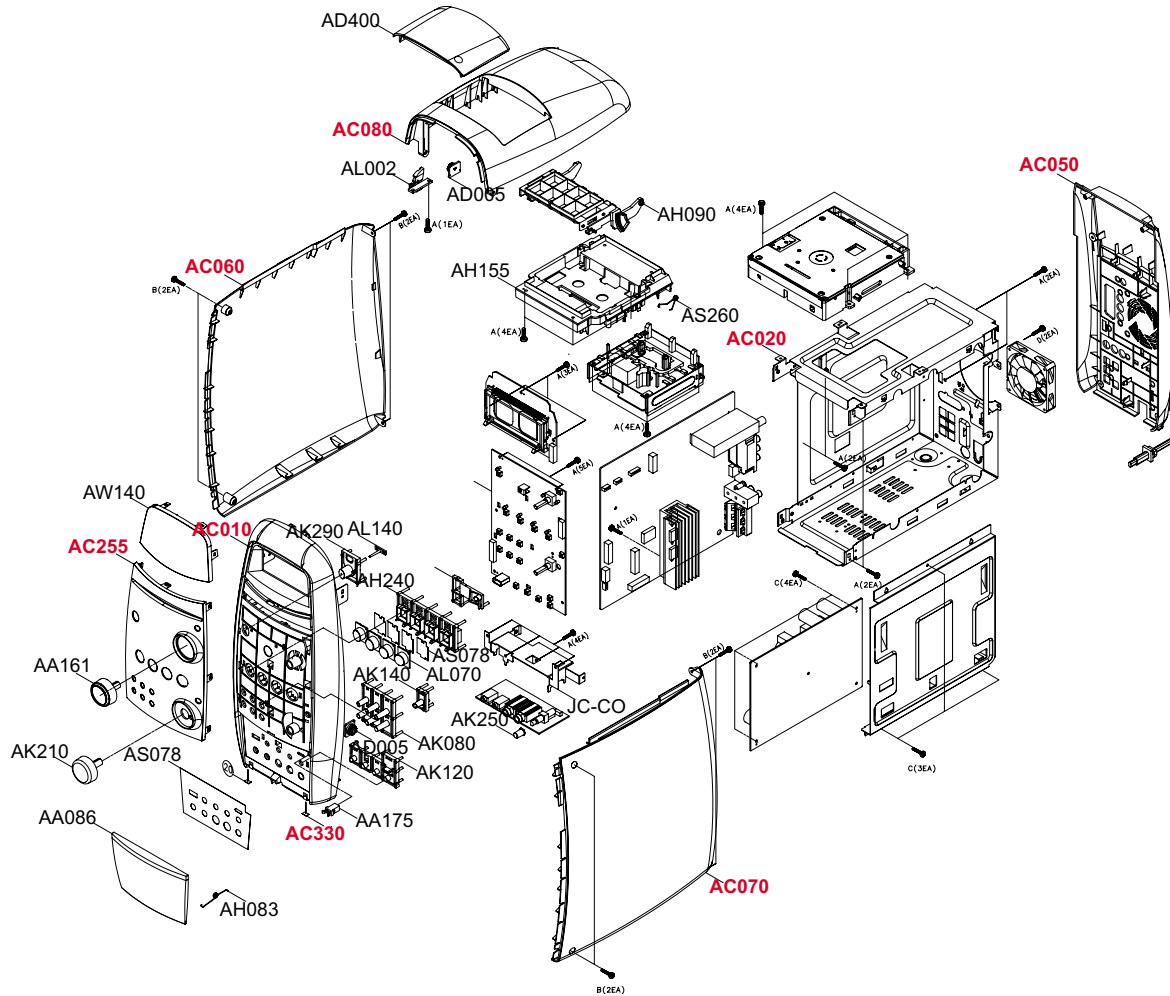


# OUTPUT



# 5-1.Exploded Views and Parts List

## 1. Total Exploded View



## 2. Parts List of total Exploded View

LOCTION No.	Description & Specification	CODE NO.	Q'ty	REMARK
AA086	COVER-JACK-ASSY	AH97-02059A	1	
AS078	SHEET-FRONT	AH63-01348A	1	
AH083	SPRING-COVER	AH61-02333A	1	
AA161	KNOB-VOLUME-ASSY	AH97-02062A	1	
AK210	KNOB-JOG	AH64-04249A	1	
AC255	COVER-FRONT	AH63-01347A	1	MAX-DX75
		AH63-01347B		MAX-DX76
		AH63-01347C		MAX-DX79
AW140	WINDOW-VFD	AH64-04238A	1	
AC010	CABINET-FRONT	AH64-04236A	1	
AL140	LENS-POWER	AH67-00456A	1	
AK290	KNOB-POWER	AH64-04244A	1	
AK130	KNOB-EJECT	AH64-04245A	1	
AH240	HOLDER-FUNCTION	AH61-02330A	1	
AS078	SHEET-FUNCTION	AH63-01349A	1	
AL070	LENS-FUNCION	AH67-00457A	1	
AK140	KNOB-ENTER	AH64-04246A	1	1
AK080	KNOB-DECK	AH64-04247A	1	
AK120	KNOB-ECHO	AH64-04253A	1	
AA175	LOCKER-SWITCH	AH97-01881A	1	
AD005	DAMPER-GEAR	AH66-00270A	2	
AC330	CUSHION-FOOT	AH69-20031A	2	
AC070	CABINET-SIDE-R	AH64-04240A	1	
AC060	CABINET-SIDE-L	AH64-04239A	1	
AK250	KNOB-MIC	AH64-04235A	1	
JK-CO	SHIELD-JACK	AH63-01398A	1	
AD400	DOOR-CASS	AH64-04243A	1	
AC080	CABINET-TOP-CD	AH64-04242A	1	
AL002	LATCH-ASSY	AH95-50001A	1	
AH090	HOLDER-CASS	AH61-02329A	1	
AH155	HOLDER-DECK	AH61-02332A	1	
AS260	SPRING-DECK	AH61-00857C	1	
AC020	CABINET-BOTTOM	AH64-04252A	1	
AC050	CABINET-REAR	AH64-04237C	1	MAX-DX79
		AH64-04237B		MAX-DX76
		AH64-04237A		MAX-DX75
A	SCREW	6003-001464	33	
B	SCREW	6003-000275	10	
C	SCREW	6003-001375	7	
D	SCREW	6002-000126	5	



## 5-2. Electrical Parts List

Location no.	Code no.	Description & Specification	Remarks	Location no.	Code no.	Description & Specification	Remarks
	<b>AH92-02702C</b>	<b>ASSY PCB-MAIN;MAX-DX75,MAIN PCB ASSAY</b>		BC58	2203-005148	C-CER,CHIP;100nF,10%,16V,X7R,1608	
AC1	2203-001596	C-CER,CHIP;220nF,+80-20%,50V,Y5V,2012		BC59	2203-005148	C-CER,CHIP;100nF,10%,16V,X7R,1608	
AC10	2203-005148	C-CER,CHIP;100nF,10%,16V,X7R,1608		BC60	2203-005148	C-CER,CHIP;100nF,10%,16V,X7R,1608	
AC11	2203-005148	C-CER,CHIP;100nF,10%,16V,X7R,1608		BC61	2203-005065	C-CER,CHIP;1000nF,+80-20%,10V,Y5V,1608	
AC12	2401-000407	C-AL;10UF,20%,16V,GP,TP,3.5X5,2.5		BC62	2203-005148	C-CER,CHIP;100nF,10%,16V,X7R,1608	
AC13	2203-001596	C-CER,CHIP;220nF,+80-20%,50V,Y5V,2012		BC63	2203-005065	C-CER,CHIP;1000nF,+80-20%,10V,Y5V,1608	
AC14	2203-001596	C-CER,CHIP;220nF,+80-20%,50V,Y5V,2012		BC64	2203-005148	C-CER,CHIP;100nF,10%,16V,X7R,1608	
AC16	2401-000042	C-AL;100uF,20%,16V,GP,TP,6.3x7.5		BC65	2203-005148	C-CER,CHIP;100nF,10%,16V,X7R,1608	
AC17	2203-005148	C-CER,CHIP;100nF,10%,16V,X7R,1608		BC68	2203-005148	C-CER,CHIP;100nF,10%,16V,X7R,1608	
AC18	2401-000407	C-AL;10UF,20%,16V,GP,TP,3.5X5,2.5		BC69	2203-005148	C-CER,CHIP;100nF,10%,16V,X7R,1608	
AC2	2203-001596	C-CER,CHIP;220nF,+80-20%,50V,Y5V,2012		BC70	2401-001502	C-AL;47uF,20%,16V,GP,TP,6.3x5.2.5	
AC22	2401-001952	C-AL;4.7uF,20%,50V,GP,TP,5x7mm,5mm		BC71	2203-005148	C-CER,CHIP;100nF,10%,16V,X7R,1608	
AC23	2401-001952	C-AL;4.7uF,20%,50V,GP,TP,5x7mm,5mm		BC72	2203-005065	C-CER,CHIP;1000nF,+80-20%,10V,Y5V,1608	
AC24	2203-000783	C-CER,CHIP;0.33nF,5%,50V,COG,1608		BC73	2203-005148	C-CER,CHIP;100nF,10%,16V,X7R,1608	
AC25	2203-000783	C-CER,CHIP;0.33nF,5%,50V,COG,1608		BC74	2401-001502	C-AL;47uF,20%,16V,GP,TP,6.3x5.2.5	
AC3	2401-000651	C-AL;2.2uF,20%,50V,GP,TP,4x7.5		BC75	2203-005148	C-CER,CHIP;100nF,10%,16V,X7R,1608	
AC4	2401-000651	C-AL;2.2uF,20%,50V,GP,TP,4x7.5		BC76	2401-001502	C-AL;47uF,20%,16V,GP,TP,6.3x5.2.5	
AC5	2203-000975	C-CER,CHIP;47nF,10%,25V,X7R,TP,1608,-		BC77	2203-005148	C-CER,CHIP;100nF,10%,16V,X7R,1608	
AC7	2203-000206	C-CER,CHIP;100nF,10%,50V,X7R,2012		BC78	2203-005065	C-CER,CHIP;1000nF,+80-20%,10V,Y5V,1608	
AC8	2203-000206	C-CER,CHIP;100nF,10%,50V,X7R,2012		BC79	2203-005148	C-CER,CHIP;100nF,10%,16V,X7R,1608	
AC9	2401-000407	C-AL;10UF,20%,16V,GP,TP,3.5X5,2.5		BC80	2203-005065	C-CER,CHIP;1000nF,+80-20%,10V,Y5V,1608	
ACW1	3711-003409	HEADER-BOARD TO CABLE;BOX,3P,1R,2mm,STRA		BC81	2203-005148	C-CER,CHIP;100nF,10%,16V,X7R,1608	
AD1	0401-001090	DIODE-SWITCHING;1SS355,80V,100MA,SOD-323		BC82	2203-005148	C-CER,CHIP;100nF,10%,16V,X7R,1608	
AD2	0401-001090	DIODE-SWITCHING;1SS355,80V,100MA,SOD-323		BC83	2203-005148	C-CER,CHIP;100nF,10%,16V,X7R,1608	
AE1	2401-001502	C-AL;47uF,20%,16V,GP,TP,6.3x5.2.5		BC84	2401-001502	C-AL;47uF,20%,16V,GP,TP,6.3x5.2.5	
AE2	2401-001502	C-AL;47uF,20%,16V,GP,TP,6.3x5.2.5		BC85	2203-005148	C-CER,CHIP;100nF,10%,16V,X7R,1608	
AIC3	1002-001392	IC-A/D CONVERTER;WM8775,EDS,24BIT,SSOP,28		BC86	2401-001502	C-AL;47uF,20%,16V,GP,TP,6.3x5.2.5	
AL1	3301-001495	BEAD-SMD;120ohm,2012,2500mA,TP,115ohm/1		BD1	3301-001495	BEAD-SMD;120ohm,2012,2500mA,TP,115ohm/1	
AL2	3301-001495	BEAD-SMD;120ohm,2012,2500mA,TP,115ohm/1		BD1A	3301-001495	BEAD-SMD;120ohm,2012,2500mA,TP,115ohm/1	
AMP HEATSINK	AH62-00163B	HEAT SINK-AMP;MAX-DX75,AL,T42,W35,L100,-		BD4	3301-001495	BEAD-SMD;120ohm,2012,2500mA,TP,115ohm/1	
AQ101	0504-000128	TR-DIGITAL;-NPN,200MW,22K/22K,SOT-23,TP		BD5	3301-001495	BEAD-SMD;120ohm,2012,2500mA,TP,115ohm/1	
AQ102	0501-000422	TR-SMALL SIGNAL;KTA1273,PNP,-30V,-30V,-2		C1	2203-000189	C-CER,CHIP;100nF,+80-20%,25V,Y5V,1608	
AQ103	0501-000422	TR-SMALL SIGNAL;KTA1273,PNP,-30V,-30V,-2		C10	2401-000407	C-AL;10UF,20%,16V,GP,TP,3.5X5,2.5	
AQ115	0504-000128	TR-DIGITAL;-NPN,200MW,22K/22K,SOT-23,TP		C11	2203-005148	C-CER,CHIP;100nF,10%,16V,X7R,1608	
AR1	2007-000134	R-CHIP;33Kohm,5%,1/10W,TP,1608		C12	2401-001502	C-AL;47uF,20%,16V,GP,TP,6.3x5.2.5	
AR100	2007-000598	R-CHIP;22ohm,5%,1/4W,TP,3216		C5	2401-001502	C-AL;47uF,20%,16V,GP,TP,6.3x5.2.5	
AR101	2007-000598	R-CHIP;22ohm,5%,1/4W,TP,3216		C6	2203-000257	C-CER,CHIP;10nF,10%,50V,X7R,1608	
AR102	2007-000598	R-CHIP;22ohm,5%,1/4W,TP,3216		C6A	2203-005819	C-CER,CHIP;1000nF,+80-20%,16V,Y5V,-,1608	
AR103	2007-000097	R-CHIP;47Kohm,5%,1/10W,TP,1608		C7	2401-001502	C-AL;47uF,20%,16V,GP,TP,6.3x5.2.5	
AR104	2007-000097	R-CHIP;47Kohm,5%,1/10W,TP,1608		C70	2203-005148	C-CER,CHIP;100nF,10%,16V,X7R,1608	
AR105	2007-000084	R-CHIP;4.7Kohm,5%,1/10W,TP,1608		C8	2401-001502	C-AL;47uF,20%,16V,GP,TP,6.3x5.2.5	
AR106	2007-000082	R-CHIP;3.3Kohm,5%,1/10W,TP,1608		C9	2203-005148	C-CER,CHIP;100nF,10%,16V,X7R,1608	
AR107	2007-000097	R-CHIP;47Kohm,5%,1/10W,TP,1608		CK1	2401-001502	C-AL;47uF,20%,16V,GP,TP,6.3x5.2.5	
AR108	2007-000312	R-CHIP;10ohm,5%,1/4W,TP,3216		CK10	2203-001058	C-CER,CHIP;0.56nF,5%,50V,COG,2012	
AR12	2007-000134	R-CHIP;33Kohm,5%,1/10W,TP,1608		CK11	2203-000716	C-CER,CHIP;3.3nF,10%,50V,X7R,2012	
AR13	2007-000134	R-CHIP;33Kohm,5%,1/10W,TP,1608		CK13	2203-000727	C-CER,CHIP;3.9nF,10%,50V,X7R,2012	
AR14	2007-000090	R-CHIP;10Kohm,5%,1/10W,TP,1608		CK14	2401-001952	C-AL;4.7uF,20%,50V,GP,TP,5x7mm,5mm	
AR16	2007-000078	R-CHIP;1Kohm,5%,1/10W,TP,1608		CK15	2203-000260	C-CER,CHIP;10nF,10%,50V,X7R,2012	
AR17	2007-000078	R-CHIP;1Kohm,5%,1/10W,TP,1608		CK16	2401-000407	C-AL;10UF,20%,16V,GP,TP,3.5X5,2.5	
AR18	2007-000097	R-CHIP;47Kohm,5%,1/10W,TP,1608		CK17	2401-001952	C-AL;4.7uF,20%,50V,GP,TP,5x7mm,5mm	
AR19	2007-000097	R-CHIP;47Kohm,5%,1/10W,TP,1608		CK2	2203-000206	C-CER,CHIP;100nF,10%,50V,X7R,2012	
AR2	2007-000134	R-CHIP;33Kohm,5%,1/10W,TP,1608		CK3	2203-000206	C-CER,CHIP;100nF,10%,50V,X7R,2012	
AR20	2007-000122	R-CHIP;1.2Kohm,5%,1/10W,TP,1608		CK4	2203-000206	C-CER,CHIP;100nF,10%,50V,X7R,2012	
AR21	2007-000081	R-CHIP;2.7Kohm,5%,1/10W,TP,1608		CK5	2401-001502	C-AL;47uF,20%,16V,GP,TP,6.3x5.2.5	
AR22	2203-001607	C-CER,CHIP;0.22nF,5%,50V,NP0,1608		CK6	2203-000206	C-CER,CHIP;100nF,10%,50V,X7R,2012	
AR23	2007-000081	R-CHIP;2.7Kohm,5%,1/10W,TP,1608		CK7	2203-005550	C-CER,CHIP;82nF,10%,50V,X7R,TP,2012,-	
AR24	2007-000122	R-CHIP;1.2Kohm,5%,1/10W,TP,1608		CK8	2203-005550	C-CER,CHIP;82nF,10%,50V,X7R,TP,2012,-	
AR25	2007-000122	R-CHIP;1.2Kohm,5%,1/10W,TP,1608		CK9	2203-001058	C-CER,CHIP;0.56nF,5%,50V,COG,2012	
AR26	2007-000097	R-CHIP;47Kohm,5%,1/10W,TP,1608		CN1	3708-000219	CONNECTOR-FPC/FFC/PIC;21P,1.25MM,STRAIGH	
AR27	2007-000097	R-CHIP;47Kohm,5%,1/10W,TP,1608		CN106	AH39-00870A	WIRE HARNESS;HT-XQ100,9P,2.5mm,150mm,UL,	
AR28	2007-000074	R-CHIP;100ohm,5%,1/10W,TP,1608		CN108	3711-000820	HEADER-BOARD TO CABLE;BOX,2P,1R,2.5MM,ST	
AR3	2007-000134	R-CHIP;33Kohm,5%,1/10W,TP,1608		CN2	3708-001618	CONNECTOR-FPC/FFC/PIC;5P,1mm,SMD-A,Sn-Pb	
AR30	2007-000074	R-CHIP;100ohm,5%,1/10W,TP,1608		CN3	3708-001765	CONNECTOR-FPC/FFC/PIC;24P,0.5mm,SMD-S,SN	
AR31	2007-000074	R-CHIP;100ohm,5%,1/10W,TP,1608		CN4	3708-000193	CONNECTOR-FPC/FFC/PIC;17P,1.25MM,STRAIGH	
AR32	2007-000074	R-CHIP;100ohm,5%,1/10W,TP,1608		CN5	3708-000411	CONNECTOR-FPC/FFC/PIC;12P,1.25MM,STRAIGH	
AR33	2007-000134	R-CHIP;33Kohm,5%,1/10W,TP,1608		CON2	AH39-00123B	CONNECT WIRE:mm-dt8,-, -,15pin,150mm,whit	
AR34	2007-000134	R-CHIP;33Kohm,5%,1/10W,TP,1608		CON4	3701-001314	CONNECTOR-HDMI;19P,2R,FEMALE,SMD-A,AU	
AR4	2007-000134	R-CHIP;33Kohm,5%,1/10W,TP,1608		CON8	3708-000448	CONNECTOR-FPC/FFC/PIC;6P,1.25MM,STRAIGHT	
AR5	2007-000097	R-CHIP;47Kohm,5%,1/10W,TP,1608		CTB1	3301-001069	BEAD-SMD;120ohm,1.6x0.8x0.8mm,200mA,TP,	
AR6	2007-000097	R-CHIP;47Kohm,5%,1/10W,TP,1608		CTB2	3301-001069	BEAD-SMD;120ohm,1.6x0.8x0.8mm,200mA,TP,	
AR7	2007-000134	R-CHIP;33Kohm,5%,1/10W,TP,1608		CTB3	3301-001069	BEAD-SMD;120ohm,1.6x0.8x0.8mm,200mA,TP,	
AR8	2007-000091	R-CHIP;12Kohm,5%,1/10W,TP,1608		CTB4	3301-001069	BEAD-SMD;120ohm,1.6x0.8x0.8mm,200mA,TP,	
AR9	2007-000091	R-CHIP;12Kohm,5%,1/10W,TP,1608		CTB5	3301-001069	BEAD-SMD;120ohm,1.6x0.8x0.8mm,200mA,TP,	
BC01	2203-005148	C-CER,CHIP;100nF,10%,16V,X7R,1608		CTB6	3301-001069	BEAD-SMD;120ohm,1.6x0.8x0.8mm,200mA,TP,	

Location no.	Code no.	Description & Specification	Remarks
CTC1	2203-005148	C-CER,CHIP;100nF,10%,16V,X7R,1608	
CTC2	2203-005148	C-CER,CHIP;100nF,10%,16V,X7R,1608	
CTC3	2203-005148	C-CER,CHIP;100nF,10%,16V,X7R,1608	
CTC4	2203-000477	C-CER,CHIP;1000NF,+80-20%,16V,Y5V,TP,201	
CTC5	2401-001502	C-AL;47uF,20%,16V,GP,TP,6.3x5.2,5	
CTC6	2203-005148	C-CER,CHIP;100nF,10%,16V,X7R,1608	
CTCN4	3708-002023	CONNECTOR-FPC/FFC/PIC;6P,1MM,SMD-S,TIN,N	
CTD1	0403-001062	DIODE-ZENER;UDZ4.7B,4.55-4.75V,200MW,SOD	
CTD2	0407-000114	DIODE-ARRAY;DAN202K,80V,100mA,CA2-3,SOT-	
CTR10	2007-000074	R-CHIP;100ohm,5%,1/10W,TP,1608	
CTR11	2007-000074	R-CHIP;100ohm,5%,1/10W,TP,1608	
CTR12	2007-000097	R-CHIP;47Kohm,5%,1/10W,TP,1608	
CTR13	2007-000074	R-CHIP;100ohm,5%,1/10W,TP,1608	
CTR2	2007-000074	R-CHIP;1Kohm,5%,1/10W,TP,1608	
CTR3	2007-000097	R-CHIP;47Kohm,5%,1/10W,TP,1608	
CTR3A	2007-000074	R-CHIP;1Kohm,5%,1/10W,TP,1608	
CTR4	2007-000097	R-CHIP;47Kohm,5%,1/10W,TP,1608	
CTR4A	2007-000074	R-CHIP;1Kohm,5%,1/10W,TP,1608	
D1	0401-001090	DIODE-SWITCHING;1SS355,80V,100MA,SOD-323	
DBD1	3301-001495	BEAD-SMD;120ohm,2012,2500mA,TP,115ohm/1	
DBD2	3301-001069	BEAD-SMD;120ohm,1.6x0.8x0.8mm,200mA,TP,	
DBD3	3301-001069	BEAD-SMD;120ohm,1.6x0.8x0.8mm,200mA,TP,	
DBD4	3301-001495	BEAD-SMD;120ohm,2012,2500mA,TP,115ohm/1	
DBD5	3301-001495	BEAD-SMD;120ohm,2012,2500mA,TP,115ohm/1	
DBD6	3301-001495	BEAD-SMD;120ohm,2012,2500mA,TP,115ohm/1	
DC1	2203-000626	C-CER,CHIP;0.022nF,5%,50V,C0G,1608	
DC10	2203-000189	C-CER,CHIP;100nF,+80-20%,25V,Y5V,1608	
DC11	2401-000407	C-AL;10uF,20%,16V,GP,TP,3.5x5.2,5	
DC12	2203-005249	C-CER,CHIP;100nF,10%,50V,X7R,1608	
DC13	2203-005249	C-CER,CHIP;100nF,10%,50V,X7R,1608	
DC14	2203-005249	C-CER,CHIP;100nF,10%,50V,X7R,1608	
DC15	2203-005249	C-CER,CHIP;100nF,10%,50V,X7R,1608	
DC16	2401-001355	C-AL;470uF,20%,10V,GP,TP,8x11.5mm,5	
DC17A	2203-005249	C-CER,CHIP;100nF,10%,50V,X7R,1608	
DC17	2401-000407	C-AL;10uF,20%,16V,GP,TP,3.5x5.2,5	
DC18	2203-005249	C-CER,CHIP;100nF,10%,50V,X7R,1608	
DC19	2203-005249	C-CER,CHIP;100nF,10%,50V,X7R,1608	
DC2	2203-000626	C-CER,CHIP;0.022nF,5%,50V,C0G,1608	
DC20	2401-001355	C-AL;470uF,20%,10V,GP,TP,8x11.5mm,5	
DC21	2203-005249	C-CER,CHIP;100nF,10%,50V,X7R,1608	
DC22	2203-005249	C-CER,CHIP;100nF,10%,50V,X7R,1608	
DC23	2203-005249	C-CER,CHIP;100nF,10%,50V,X7R,1608	
DC24	2203-005249	C-CER,CHIP;100nF,10%,50V,X7R,1608	
DC25	2203-005249	C-CER,CHIP;100nF,10%,50V,X7R,1608	
DC26	2203-005249	C-CER,CHIP;100nF,10%,50V,X7R,1608	
DC27	2203-005249	C-CER,CHIP;100nF,10%,50V,X7R,1608	
DC28	2203-005249	C-CER,CHIP;100nF,10%,50V,X7R,1608	
DC29	2203-005249	C-CER,CHIP;100nF,10%,50V,X7R,1608	
DC3	2401-001502	C-AL;47uF,20%,16V,GP,TP,6.3x5.2,5	
DC30	2203-005249	C-CER,CHIP;100nF,10%,50V,X7R,1608	
DC31	2401-001355	C-AL;470uF,20%,10V,GP,TP,8x11.5mm,5	
DC32	2401-001355	C-AL;470uF,20%,10V,GP,TP,8x11.5mm,5	
DC33	2203-005249	C-CER,CHIP;100nF,10%,50V,X7R,1608	
DC34	2203-005249	C-CER,CHIP;100nF,10%,50V,X7R,1608	
DC35	2203-005249	C-CER,CHIP;100nF,10%,50V,X7R,1608	
DC36	2203-005249	C-CER,CHIP;100nF,10%,50V,X7R,1608	
DC37	2203-005249	C-CER,CHIP;100nF,10%,50V,X7R,1608	
DC4	2401-000042	C-AL;100uF,20%,16V,GP,TP,6.3x7.5	
DC8	2203-005249	C-CER,CHIP;100nF,10%,50V,X7R,1608	
DC9	2401-000407	C-AL;10uF,20%,16V,GP,TP,3.5x5.2,5	
DD10	0403-000314	DIODE-ZENER;RLZJ9.1B,8.8-9.3V,500MW,LL-3	
DD11	0403-001064	DIODE-ZENER;RLZ5.1B,4.94-5.2V,500mW,LL-3	
DD12	0401-001090	DIODE-SWITCHING;1SS355,80V,100MA,SOD-323	
DD13	0401-001090	DIODE-SWITCHING;1SS355,80V,100MA,SOD-323	
DIC1	1003-001450	IC-MOTOR DRIVER;BA5954FM,SOP,28P,300MIL,	
DIC2	1003-001508	IC-MOTOR DRIVER;FAN8082D TF,SOP,8P,200MIL	
DIC3	1201-001842	IC-OP AMP;TL3472CD,SO,TP,8P,-,DUAL,-,PAL	
DIC4	1204-002627	IC-MODULATOR;PS9829B,LQFP,100P,14x14mm,P	
DIC5	AH14-10004R	IC-CMOS LOGIC;M74HC04,-,SOP,14P,-,TAP	
DQ10	0501-000341	TR-SMALL SIGNAL;KSC1623-L,NPN,200mW,SOT-	
DQ11	0501-000303	TR-SMALL SIGNAL;KSA733,PNP,250mW,TO-92,T	
DR1	2007-000109	R-CHIP;1Mohm,5%,1/10W,TP,1608	
DR10	2007-000072	R-CHIP;47ohm,5%,1/10W,TP,1608	
DR11	2007-000072	R-CHIP;47ohm,5%,1/10W,TP,1608	
DR12	2007-000072	R-CHIP;47ohm,5%,1/10W,TP,1608	
DR13	2007-000052	R-CHIP;10Kohm,1%,1/10W,TP,1608	
DR14	2007-000052	R-CHIP;10Kohm,1%,1/10W,TP,1608	
DR15	2007-000052	R-CHIP;10Kohm,1%,1/10W,TP,1608	

Location no.	Code no.	Description & Specification	Remarks
DR16	2007-000052	R-CHIP;10Kohm,1%,1/10W,TP,1608	
DR17	2007-000052	R-CHIP;10Kohm,1%,1/10W,TP,1608	
DR18	2007-000052	R-CHIP;10Kohm,1%,1/10W,TP,1608	
DR19	2007-002425	R-CHIP;1ohm,5%,1/10W,TP,1608	
DR2	2007-000116	R-CHIP;120ohm,5%,1/10W,TP,1608	
DR20	2007-000052	R-CHIP;10Kohm,1%,1/10W,TP,1608	
DR21	2007-000113	R-CHIP;33ohm,5%,1/10W,TP,1608	
DR22	2007-000074	R-CHIP;100ohm,5%,1/10W,TP,1608	
DR23	2007-000074	R-CHIP;100ohm,5%,1/10W,TP,1608	
DR24	2007-000074	R-CHIP;100ohm,5%,1/10W,TP,1608	
DR25	2007-000074	R-CHIP;100ohm,5%,1/10W,TP,1608	
DR26	2007-000072	R-CHIP;47ohm,5%,1/10W,TP,1608	
DR27	2007-000072	R-CHIP;47ohm,5%,1/10W,TP,1608	
DR28	2007-000072	R-CHIP;47ohm,5%,1/10W,TP,1608	
DR29	2007-000072	R-CHIP;47ohm,5%,1/10W,TP,1608	
DR3	2007-000072	R-CHIP;47ohm,5%,1/10W,TP,1608	
DR30	2007-000072	R-CHIP;47ohm,5%,1/10W,TP,1608	
DR31	2007-000072	R-CHIP;47ohm,5%,1/10W,TP,1608	
DR32	2007-000072	R-CHIP;47ohm,5%,1/10W,TP,1608	
DR33	2007-000072	R-CHIP;47ohm,5%,1/10W,TP,1608	
DR34	2007-000072	R-CHIP;47ohm,5%,1/10W,TP,1608	
DR35	2007-000072	R-CHIP;47ohm,5%,1/10W,TP,1608	
DR36	2007-000072	R-CHIP;47ohm,5%,1/10W,TP,1608	
DR37	2007-000072	R-CHIP;47ohm,5%,1/10W,TP,1608	
DR38	2007-000072	R-CHIP;47ohm,5%,1/10W,TP,1608	
DR39	2007-000072	R-CHIP;47ohm,5%,1/10W,TP,1608	
DR4	2007-000052	R-CHIP;10Kohm,1%,1/10W,TP,1608	
DR40	2007-000113	R-CHIP;33ohm,5%,1/10W,TP,1608	
DR41	2007-000468	R-CHIP;1Kohm,5%,1/8W,TP,2012	
DR42	2003-002288	R-METAL OXIDE(S);2.2KOHM,5%,2W,AF,TP,3.9	
DR5	2007-000052	R-CHIP;10Kohm,1%,1/10W,TP,1608	
DR6	2007-000094	R-CHIP;22Kohm,5%,1/10W,TP,1608	
DR7	2007-000072	R-CHIP;47ohm,5%,1/10W,TP,1608	
DR8	2007-000072	R-CHIP;47ohm,5%,1/10W,TP,1608	
DR9	2007-000072	R-CHIP;47ohm,5%,1/10W,TP,1608	
EC1	2203-000062	C-CER,CHIP;47nF,+80-20%,50V,Y5V,1608	
EC10	2203-000062	C-CER,CHIP;47nF,+80-20%,50V,Y5V,1608	
EC2	2203-000062	C-CER,CHIP;47nF,+80-20%,50V,Y5V,1608	
EC3	2203-000062	C-CER,CHIP;47nF,+80-20%,50V,Y5V,1608	
EC4	2203-000062	C-CER,CHIP;47nF,+80-20%,50V,Y5V,1608	
EC5	2203-000062	C-CER,CHIP;47nF,+80-20%,50V,Y5V,1608	
EC6	2203-000062	C-CER,CHIP;47nF,+80-20%,50V,Y5V,1608	
EC7	2203-000062	C-CER,CHIP;47nF,+80-20%,50V,Y5V,1608	
EC8	2203-000062	C-CER,CHIP;47nF,+80-20%,50V,Y5V,1608	
EC9	2203-000062	C-CER,CHIP;47nF,+80-20%,50V,Y5V,1608	
FB23	3301-001495	BEAD-SMD;120ohm,2012,2500mA,TP,115ohm/1	
FC01	2203-005171	C-CER,CHIP;1000nF,10%,16V,X7R,2012	
FC02L	2203-000236	C-CER,CHIP;0.1nF,5%,50V,C0G,1608	
FC03	2203-005249	C-CER,CHIP;100nF,10%,50V,X7R,1608	
FC04	2401-002300	C-AL;47#F,20%,50V,GP,TP,6.3x11.5mm	
FC05	2203-005249	C-CER,CHIP;100nF,10%,50V,X7R,1608	
FC06	2203-005171	C-CER,CHIP;1000nF,10%,16V,X7R,2012	
FC07	2203-001634	C-CER,CHIP;33nF,10%,50V,X7R,1608	
FC08L	2203-001634	C-CER,CHIP;33nF,10%,50V,X7R,1608	
FC09L	2203-001634	C-CER,CHIP;33nF,10%,50V,X7R,1608	
FC10	2203-001634	C-CER,CHIP;33nF,10%,50V,X7R,1608	
FC11	2203-005171	C-CER,CHIP;1000nF,10%,16V,X7R,2012	
FC12	2203-005249	C-CER,CHIP;100nF,10%,50V,X7R,1608	
FC13L	2203-005249	C-CER,CHIP;100nF,10%,50V,X7R,1608	
FC14R	2203-005249	C-CER,CHIP;100nF,10%,50V,X7R,1608	
FC15	2203-005249	C-CER,CHIP;100nF,10%,50V,X7R,1608	
FC16	2203-005171	C-CER,CHIP;1000nF,10%,16V,X7R,2012	
FC17	2203-000257	C-CER,CHIP;10nF,10%,50V,X7R,1608	
FC18	2203-005249	C-CER,CHIP;100nF,10%,50V,X7R,1608	
FC19	2401-004106	C-AL;680uF,20%,50V,-,BK,12.5 x 35.5	
FC20L	2203-000787	C-CER,CHIP;0.33NF,5%,50V,C0G,TP,2012	
FC21L	2203-000787	C-CER,CHIP;0.33NF,5%,50V,C0G,TP,2012	
FC22R	2203-000787	C-CER,CHIP;0.33NF,5%,50V,C0G,TP,2012	
FC23R	2203-000787	C-CER,CHIP;0.33NF,5%,50V,C0G,TP,2012	
FC24	2203-000257	C-CER,CHIP;10nF,10%,50V,X7R,1608	
FC25	2203-005249	C-CER,CHIP;100nF,10%,50V,X7R,1608	
FC26	2401-004106	C-AL;680uF,20%,50V,-,BK,12.5 x 35.5	
FC27L	2305-000407	C-FILM,LEAD-PEF;470nF,5%,100V,TP,-,5mm	
FC28R	2305-000407	C-FILM,LEAD-PEF;470nF,5%,100V,TP,-,5mm	
FC29L	2203-005249	C-CER,CHIP;100nF,10%,50V,X7R,1608	
FC29R	2203-005249	C-CER,CHIP;100nF,10%,50V,X7R,1608	
FC30L	2203-005249	C-CER,CHIP;100nF,10%,50V,X7R,1608	

Location no.	Code no.	Description & Specification	Remarks	Location no.	Code no.	Description & Specification	Remarks
FC30R	2203-005249	C-CER,CHIP;100nF,10%,50V,X7R,1608		HR19	2007-000074	R-CHIP;100ohm,5%,1/10W,TP,1608	
FC31L	2203-000257	C-CER,CHIP;10nF,10%,50V,X7R,1608		HR2	2007-000729	R-CHIP;300ohm,5%,1/10W,TP,1608	
FC31R	2203-000257	C-CER,CHIP;10nF,10%,50V,X7R,1608		HR20	2007-000074	R-CHIP;100ohm,5%,1/10W,TP,1608	
FC32L	2203-000257	C-CER,CHIP;10nF,10%,50V,X7R,1608		HR21	2007-000074	R-CHIP;100ohm,5%,1/10W,TP,1608	
FC32R	2203-000257	C-CER,CHIP;10nF,10%,50V,X7R,1608		HR22	2007-000074	R-CHIP;100ohm,5%,1/10W,TP,1608	
FC33L	2203-005249	C-CER,CHIP;100nF,10%,50V,X7R,1608					
FC33R	2203-005249	C-CER,CHIP;100nF,10%,50V,X7R,1608		HR23	2007-000074	R-CHIP;100ohm,5%,1/10W,TP,1608	
FC34L	2203-005249	C-CER,CHIP;100nF,10%,50V,X7R,1608		HR24	2007-000074	R-CHIP;100ohm,5%,1/10W,TP,1608	
FC34R	2203-005249	C-CER,CHIP;100nF,10%,50V,X7R,1608		HR25	2007-000074	R-CHIP;100ohm,5%,1/10W,TP,1608	
FIC1L	1201-002236	IC-AUDIO AMP;TAS5152,PSOP3,36P,15.9x11mm		HR26	2007-000074	R-CHIP;100ohm,5%,1/10W,TP,1608	
FL01L	AH27-00064A	COIL FILTER;MAX-DT99,10UH,45mOHM,2,13.8m		HR27	2007-000074	R-CHIP;100ohm,5%,1/10W,TP,1608	
FL02L	AH27-00064A	COIL FILTER;MAX-DT99,10UH,45mOHM,2,13.8m		HR28	2007-000074	R-CHIP;100ohm,5%,1/10W,TP,1608	
FL03R	AH27-00064A	COIL FILTER;MAX-DT99,10UH,45mOHM,2,13.8m		HR29	2007-000074	R-CHIP;100ohm,5%,1/10W,TP,1608	
FL04R	AH27-00064A	COIL FILTER;MAX-DT99,10UH,45mOHM,2,13.8m		HR2L	2007-000094	R-CHIP;22Kohm,5%,1/10W,TP,1608	
FR005	2007-000468	R-CHIP;1Kohm,5%,1/8W,TP,2012		HR2R	2007-000094	R-CHIP;22Kohm,5%,1/10W,TP,1608	
FR006	2007-000052	R-CHIP;10Kohm,1%,1/10W,TP,1608		HR3	2007-000074	R-CHIP;100ohm,5%,1/10W,TP,1608	
FR01	2007-000312	R-CHIP;10ohm,5%,1/4W,TP,3216		HR30	2007-000075	R-CHIP;220ohm,5%,1/10W,TP,1608	
FR02	2007-000070	R-CHIP;0ohm,5%,1/10W,TP,1608		HR31	2007-000074	R-CHIP;100ohm,5%,1/10W,TP,1608	
FR03	2007-000070	R-CHIP;0ohm,5%,1/10W,TP,1608		HR32	2007-000074	R-CHIP;100ohm,5%,1/10W,TP,1608	
FR04L	2007-000074	R-CHIP;100ohm,5%,1/10W,TP,1608		HR33	2007-000074	R-CHIP;100ohm,5%,1/10W,TP,1608	
FR05	2007-000094	R-CHIP;22Kohm,5%,1/10W,TP,1608		HR34	2007-000074	R-CHIP;100ohm,5%,1/10W,TP,1608	
FR06	2007-000090	R-CHIP;10Kohm,5%,1/10W,TP,1608		HR35	2007-000074	R-CHIP;100ohm,5%,1/10W,TP,1608	
FR07	2007-000090	R-CHIP;10Kohm,5%,1/10W,TP,1608		HR36	2007-000074	R-CHIP;100ohm,5%,1/10W,TP,1608	
FR08	2007-000070	R-CHIP;0ohm,5%,1/10W,TP,1608		HR37	2007-000074	R-CHIP;100ohm,5%,1/10W,TP,1608	
FR09	2007-000070	R-CHIP;0ohm,5%,1/10W,TP,1608		HR38	2007-000074	R-CHIP;100ohm,5%,1/10W,TP,1608	
FR10	2007-000312	R-CHIP;10ohm,5%,1/4W,TP,3216		HR39	2007-000309	R-CHIP;10ohm,5%,1/10W,TP,1608	
FR11	2007-000312	R-CHIP;10ohm,5%,1/4W,TP,3216		HR4	2007-000402	R-CHIP;150ohm,5%,1/10W,TP,1608	
FR12	2007-000312	R-CHIP;10ohm,5%,1/4W,TP,3216		HR40	2007-000309	R-CHIP;10ohm,5%,1/10W,TP,1608	
FR13	2007-000694	R-CHIP;3.3ohm,5%,1/8W,TP,2012		HR4L	2007-000094	R-CHIP;22Kohm,5%,1/10W,TP,1608	
FR14L	2007-000462	R-CHIP;18ohm,5%,1/8W,TP,2012		HR4R	2007-000094	R-CHIP;22Kohm,5%,1/10W,TP,1608	
FR15L	2007-000462	R-CHIP;18ohm,5%,1/8W,TP,2012		HR5	2007-000309	R-CHIP;10ohm,5%,1/10W,TP,1608	
FR16R	2007-000462	R-CHIP;18ohm,5%,1/8W,TP,2012		HR5L	2007-000052	R-CHIP;10Kohm,1%,1/10W,TP,1608	
FR17R	2007-000462	R-CHIP;18ohm,5%,1/8W,TP,2012		HR5R	2007-000052	R-CHIP;10Kohm,1%,1/10W,TP,1608	
FR18	2007-000694	R-CHIP;3.3ohm,5%,1/8W,TP,2012		HR6	2007-000309	R-CHIP;10ohm,5%,1/10W,TP,1608	
FR19	2007-000312	R-CHIP;10ohm,5%,1/4W,TP,3216		HR6L	2007-000052	R-CHIP;10Kohm,1%,1/10W,TP,1608	
FR20L	2007-000052	R-CHIP;10Kohm,1%,1/10W,TP,1608		HR6R	2007-000052	R-CHIP;10Kohm,1%,1/10W,TP,1608	
FR20R	2007-000052	R-CHIP;10Kohm,1%,1/10W,TP,1608		HR7	2007-000309	R-CHIP;10ohm,5%,1/10W,TP,1608	
FR21L	2007-000052	R-CHIP;10Kohm,1%,1/10W,TP,1608		HR7L	2007-000097	R-CHIP;47Kohm,5%,1/10W,TP,1608	
FR21R	2007-000052	R-CHIP;10Kohm,1%,1/10W,TP,1608		HR7R	2007-000097	R-CHIP;47Kohm,5%,1/10W,TP,1608	
FR22L	2007-002425	R-CHIP;1ohm,5%,1/10W,TP,1608		HR8	2007-000309	R-CHIP;10ohm,5%,1/10W,TP,1608	
FR22R	2007-002425	R-CHIP;1ohm,5%,1/10W,TP,1608		HR8L	2007-000097	R-CHIP;47Kohm,5%,1/10W,TP,1608	
FR23L	2007-002425	R-CHIP;1ohm,5%,1/10W,TP,1608		HR8R	2007-000097	R-CHIP;47Kohm,5%,1/10W,TP,1608	
FR23R	2007-002425	R-CHIP;1ohm,5%,1/10W,TP,1608		HR9	2007-000309	R-CHIP;10ohm,5%,1/10W,TP,1608	
HC1	2401-000042	C-AL;100uF,20%,16V,GP,TP,6.3x7,5		HR9L	2007-000113	R-CHIP;33ohm,5%,1/10W,TP,1608	
HC19	2203-005148	C-CER,CHIP;100nF,10%,16V,X7R,1608		HR9R	2007-000052	R-CHIP;10Kohm,1%,1/10W,TP,1608	
HC1L	2203-000236	C-CER,CHIP;0.1nF,5%,50V,C0G,1608		IC HOLDER	AH61-02131A	HOLDER-IC;HX-D77,PBT,-,-,-,-,-	
HC1R	2203-000236	C-CER,CHIP;0.1nF,5%,50V,C0G,1608		IC1	0801-002683	IC-CMOS LOGIC;74HCT245,TRANSCEIVER,TSSOP	
HC2	2401-000042	C-AL;100uF,20%,16V,GP,TP,6.3x7,5		IC2	1103-001334	IC-EEPROM;K524A60X81,1KX8BIT,SOP,8P,5X4MM	
HC2L	2203-000236	C-CER,CHIP;0.1nF,5%,50V,C0G,1608		IC7	1203-002935	IC-POSI.ADJUST REG.;AIC1117ACE,TO-252,3P	
HC2R	2203-000236	C-CER,CHIP;0.1nF,5%,50V,C0G,1608		KB01	3301-001069	BEAD-SMD;120ohm,1.6x0.8x0.8mm,200mA,TP,	
HC3L	2203-000236	C-CER,CHIP;0.1nF,5%,50V,C0G,1608		KB02	3301-001069	BEAD-SMD;120ohm,1.6x0.8x0.8mm,200mA,TP,	
HC3R	2203-000236	C-CER,CHIP;0.1nF,5%,50V,C0G,1608		KC100	2401-000651	C-AL;2.2uF,20%,50V,GP,TP,4x7,5	
HC6L	2203-000998	C-CER,CHIP;0.047nF,5%,50V,C0G,1608		KC101	2203-005148	C-CER,CHIP;100nF,10%,16V,X7R,1608	
HC6R	2203-000998	C-CER,CHIP;0.047nF,5%,50V,C0G,1608		KC102	2401-000407	C-AL;10UF,20%,16V,GP,TP,3.5X5.2,5	
HC7L	2203-000998	C-CER,CHIP;0.047nF,5%,50V,C0G,1608		KC103	2203-005148	C-CER,CHIP;100nF,10%,16V,X7R,1608	
HC7R	2203-000998	C-CER,CHIP;0.047nF,5%,50V,C0G,1608		KC104	2401-000407	C-AL;10UF,20%,16V,GP,TP,3.5X5.2,5	
HC8L	2401-000042	C-AL;100uF,20%,16V,GP,TP,6.3x7,5		KC23	2401-000651	C-AL;2.2uF,20%,50V,GP,TP,4x7,5	
HC8R	2401-000042	C-AL;100uF,20%,16V,GP,TP,6.3x7,5		KC24	2401-000651	C-AL;2.2uF,20%,50V,GP,TP,4x7,5	
HC9L	2203-000236	C-CER,CHIP;0.1nF,5%,50V,C0G,1608		KC3	2401-000414	C-AL;10uF,20%,16V,GP,TP,4x7,5	
HC9R	2203-000236	C-CER,CHIP;0.1nF,5%,50V,C0G,1608		KC4	2203-005148	C-CER,CHIP;100nF,10%,16V,X7R,1608	
HIC	1201-000163	IC-OP AMP;4560,SOP,8P,173MIL,DUAL,100V/m		KIC1	1002-001448	IC-A/D CONVERTER;AK5358ET,24,TSSOP,16P,5	
HL1	3301-001495	BEAD-SMD;120ohm,2012,2500mA,TP,115ohm/1		KR21	2007-000123	R-CHIP;1.5Kohm,5%,1/10W,TP,1608	
HL1L	2703-000404	INDUCTOR-SMD;220uH,10%,3225		KR22	2007-000123	R-CHIP;1.5Kohm,5%,1/10W,TP,1608	
HL1R	2703-000404	INDUCTOR-SMD;220uH,10%,3225		KR23	2007-000074	R-CHIP;100ohm,5%,1/10W,TP,1608	
HL2	3301-001495	BEAD-SMD;120ohm,2012,2500mA,TP,115ohm/1		KR24	2007-000074	R-CHIP;100ohm,5%,1/10W,TP,1608	
HL3	3301-001495	BEAD-SMD;120ohm,2012,2500mA,TP,115ohm/1		KR25	2007-000074	R-CHIP;100ohm,5%,1/10W,TP,1608	
HR1	2007-000084	R-CHIP;4.7Kohm,5%,1/10W,TP,1608		KR26	2007-000074	R-CHIP;100ohm,5%,1/10W,TP,1608	
HR10	2007-000309	R-CHIP;10ohm,5%,1/10W,TP,1608		L50	2901-001302	FILTER-EMI SMD;20V,0.3A,-,-,2.0x1.2x1.3m	
HR10L	2007-000052	R-CHIP;10Kohm,1%,1/10W,TP,1608		L51	2901-001302	FILTER-EMI SMD;20V,0.3A,-,-,2.0x1.2x1.3m	
HR10R	2007-000113	R-CHIP;33ohm,5%,1/10W,TP,1608		L52	2901-001302	FILTER-EMI SMD;20V,0.3A,-,-,2.0x1.2x1.3m	
HR11	2007-000309	R-CHIP;10ohm,5%,1/10W,TP,1608		L53	2901-001302	FILTER-EMI SMD;20V,0.3A,-,-,2.0x1.2x1.3m	
HR12	2007-000309	R-CHIP;10ohm,5%,1/10W,TP,1608		LBA5	3301-001495	BEAD-SMD;120ohm,2012,2500mA,TP,115ohm/1	
HR13	2007-000070	R-CHIP;0ohm,5%,1/10W,TP,1608		MAIN PCB	AH41-01047A	PCB-MAIN;MAX-DX75,CEM-1,2,0,1.6MM,247MM	
HR14	2007-000070	R-CHIP;0ohm,5%,1/10W,TP,1608		MC1	2203-000257	C-CER,CHIP;10nF,10%,50V,X7R,1608	
HR15	2007-000084	R-CHIP;4.7Kohm,5%,1/10W,TP,1608		MC10	2203-005819	C-CER,CHIP;100nF,+80-20%,16V,Y5V,-,1608	
HR16	2007-000084	R-CHIP;4.7Kohm,5%,1/10W,TP,1608		MC11	2203-000257	C-CER,CHIP;10nF,10%,50V,X7R,1608	
HR17	2007-000084	R-CHIP;4.7Kohm,5%,1/10W,TP,1608		MC12	2203-000257	C-CER,CHIP;10nF,10%,50V,X7R,1608	
HR18	2007-000074	R-CHIP;100ohm,5%,1/10W,TP,1608		MC17	2203-005148	C-CER,CHIP;100nF,10%,16V,X7R,1608	

Location no.	Code no.	Description & Specification	Remarks
MC18	2401-000909	C-AL;22uF,20%,16V,GP,TP,5x5,2.5	
MC19	2203-000646	C-CER,CHIP;0.024nF,5%,50V,C0G,TP,1608	
MC2	2203-0005819	C-CER,CHIP;100nF,+80-20%,16V,Y5V,-,1608	
MC23	2203-000681	C-CER,CHIP;0.027nF,5%,50V,C0G,1608	
MC24	2203-005148	C-CER,CHIP;100nF,10%,16V,X7R,1608	
MC25	2203-005148	C-CER,CHIP;100nF,10%,16V,X7R,1608	
MC26	2203-005148	C-CER,CHIP;100nF,10%,16V,X7R,1608	
MC27	2203-005148	C-CER,CHIP;100nF,10%,16V,X7R,1608	
MC28	2203-005148	C-CER,CHIP;100nF,10%,16V,X7R,1608	
MC28A	2203-005148	C-CER,CHIP;100nF,10%,16V,X7R,1608	
MC29	2203-005148	C-CER,CHIP;100nF,10%,16V,X7R,1608	
MC29A	2203-005148	C-CER,CHIP;100nF,10%,16V,X7R,1608	
MC3	2203-000257	C-CER,CHIP;10nF,10%,50V,X7R,1608	
MC30	2203-005148	C-CER,CHIP;100nF,10%,16V,X7R,1608	
MC31	2203-005148	C-CER,CHIP;100nF,10%,16V,X7R,1608	
MC32	2203-005148	C-CER,CHIP;100nF,10%,16V,X7R,1608	
MC33	2203-005148	C-CER,CHIP;100nF,10%,16V,X7R,1608	
MC34	2203-005148	C-CER,CHIP;100nF,10%,16V,X7R,1608	
MC35	2203-005148	C-CER,CHIP;100nF,10%,16V,X7R,1608	
MC36	2203-005148	C-CER,CHIP;100nF,10%,16V,X7R,1608	
MC37	2203-005148	C-CER,CHIP;100nF,10%,16V,X7R,1608	
MC38	2203-005148	C-CER,CHIP;100nF,10%,16V,X7R,1608	
MC39	2203-005148	C-CER,CHIP;100nF,10%,16V,X7R,1608	
MC4	2203-005819	C-CER,CHIP;1000nF,+80-20%,16V,Y5V,-,1608	
MC40	2203-005148	C-CER,CHIP;100nF,10%,16V,X7R,1608	
MC41	2203-005148	C-CER,CHIP;100nF,10%,16V,X7R,1608	
MC43	2203-005148	C-CER,CHIP;100nF,10%,16V,X7R,1608	
MC45	2203-005148	C-CER,CHIP;100nF,10%,16V,X7R,1608	
MC46	2203-005148	C-CER,CHIP;100nF,10%,16V,X7R,1608	
MC47	2203-005148	C-CER,CHIP;100nF,10%,16V,X7R,1608	
MC48	2203-005148	C-CER,CHIP;100nF,10%,16V,X7R,1608	
MC49	2203-005148	C-CER,CHIP;100nF,10%,16V,X7R,1608	
MC5	2401-000042	C-AL;100uF,20%,16V,GP,TP,6.3x7,5	
MC50	2203-005148	C-CER,CHIP;100nF,10%,16V,X7R,1608	
MC52	2203-00062	C-CER,CHIP;47nF,+80-20%,50V,Y5V,1608	
MC53	2203-000257	C-CER,CHIP;10nF,10%,50V,X7R,1608	
MC56	2401-000042	C-AL;100uF,20%,16V,GP,TP,6.3x7,5	
MC58	2203-005148	C-CER,CHIP;100nF,10%,16V,X7R,1608	
MC59	2401-000407	C-AL;10uF,20%,16V,GP,TP,3.5x5,2.5	
MC6	2203-005148	C-CER,CHIP;100nF,10%,16V,X7R,1608	
MC60	2203-005148	C-CER,CHIP;100nF,10%,16V,X7R,1608	
MC61	2203-005148	C-CER,CHIP;100nF,10%,16V,X7R,1608	
MC62	2203-005148	C-CER,CHIP;100nF,10%,16V,X7R,1608	
MC63	2203-005148	C-CER,CHIP;100nF,10%,16V,X7R,1608	
MC64	2203-005148	C-CER,CHIP;100nF,10%,16V,X7R,1608	
MC65	2203-005148	C-CER,CHIP;100nF,10%,16V,X7R,1608	
MC67	2203-005819	C-CER,CHIP;1000nF,+80-20%,16V,Y5V,-,1608	
MC68	2401-001092	C-AL;330uF,20%,10V,GP,-,8x11.5,2.5m	
MC69	2401-001092	C-AL;330uF,20%,10V,GP,-,8x11.5,2.5m	
MC7	2203-005819	C-CER,CHIP;1000nF,+80-20%,16V,Y5V,-,1608	
MC71	2203-001086	C-CER,CHIP;0.0050nF,0.25pF,50V,NP0,1608	
MC72	2203-005148	C-CER,CHIP;100nF,10%,16V,X7R,1608	
MC73	2203-005148	C-CER,CHIP;100nF,10%,16V,X7R,1608	
MC74	2203-005148	C-CER,CHIP;100nF,10%,16V,X7R,1608	
MC75	2203-005148	C-CER,CHIP;100nF,10%,16V,X7R,1608	
MC78	2401-000042	C-AL;100uF,20%,16V,GP,TP,6.3x7,5	
MC79	2203-005148	C-CER,CHIP;100nF,10%,16V,X7R,1608	
MC84	2203-005148	C-CER,CHIP;100nF,10%,16V,X7R,1608	
MC99	2401-000832	C-AL;220uF,20%,25V,GP,TP,8x11.5,5.5	
MD1	0401-001090	DIODE-SWITCHING;1SS355,80V,100MA,SOD-323	
MD3	0403-001008	DIODE-ZENER;RLZ5.6A,5.6V,5.28-5.55V,500m	
MIC1	1204-002539	IC-PAL/NTSC DECODER;ES8381FCC,PQFP,256P,	
MIC2	1105-001573	IC-DRAM;K4S281632,-,128Mbit,8Mx16Bit,T	
MIC3	1107-001505	IC-FLASH MEMORY;49BV162AT,16Mbit,1Mx16/2	
MIC5	1204-002233	IC-VOLUME/TONE CONT.;PT2399S,SO,16P,300M	
ML10	3301-001495	BEAD-SMD;120ohm,2012,2500mA,TP,115ohm/1	
ML103	3301-001495	BEAD-SMD;120ohm,2012,2500mA,TP,115ohm/1	
ML104	3301-001495	BEAD-SMD;120ohm,2012,2500mA,TP,115ohm/1	
ML105	3301-001495	BEAD-SMD;120ohm,2012,2500mA,TP,115ohm/1	
ML106	3301-001495	BEAD-SMD;120ohm,2012,2500mA,TP,115ohm/1	
ML11	2007-000074	R-CHIP;100ohm,5%,1/10W,TP,1608	
ML12	3301-001495	BEAD-SMD;120ohm,2012,2500mA,TP,115ohm/1	
ML18	3301-001495	BEAD-SMD;120ohm,2012,2500mA,TP,115ohm/1	
ML21	3301-001495	BEAD-SMD;120ohm,2012,2500mA,TP,115ohm/1	
ML25	3301-001069	BEAD-SMD;120ohm,1.6x0.8x0.8mm,200mA,TP,	
ML26	3301-001069	BEAD-SMD;120ohm,1.6x0.8x0.8mm,200mA,TP,	
ML27	3301-001069	BEAD-SMD;120ohm,1.6x0.8x0.8mm,200mA,TP,	
ML28	3301-001069	BEAD-SMD;120ohm,1.6x0.8x0.8mm,200mA,TP,	

Location no.	Code no.	Description & Specification	Remarks
ML29	3301-001069	BEAD-SMD;120ohm,1.6x0.8x0.8mm,200mA,TP,	
ML3	3301-001069	BEAD-SMD;120ohm,1.6x0.8x0.8mm,200mA,TP,	
ML30	3301-001069	BEAD-SMD;120ohm,1.6x0.8x0.8mm,200mA,TP,	
ML32	3301-001069	BEAD-SMD;120ohm,1.6x0.8x0.8mm,200mA,TP,	
ML37	3301-001495	BEAD-SMD;120ohm,2012,2500mA,TP,115ohm/1	
ML40	3301-001495	BEAD-SMD;120ohm,2012,2500mA,TP,115ohm/1	
ML60	3301-001069	BEAD-SMD;120ohm,1.6x0.8x0.8mm,200mA,TP,	
ML61	3301-001069	BEAD-SMD;120ohm,1.6x0.8x0.8mm,200mA,TP,	
ML62	3301-001069	BEAD-SMD;120ohm,1.6x0.8x0.8mm,200mA,TP,	
ML63	3301-001069	BEAD-SMD;120ohm,1.6x0.8x0.8mm,200mA,TP,	
ML64	3301-001069	BEAD-SMD;120ohm,1.6x0.8x0.8mm,200mA,TP,	
ML65	3301-001069	BEAD-SMD;120ohm,1.6x0.8x0.8mm,200mA,TP,	
ML66	2007-000113	R-CHIP;33ohm,5%,1/10W,TP,1608	
ML67	2007-000113	R-CHIP;33ohm,5%,1/10W,TP,1608	
ML68	2007-000113	R-CHIP;33ohm,5%,1/10W,TP,1608	
ML69	2007-000113	R-CHIP;33ohm,5%,1/10W,TP,1608	
ML70	2007-000113	R-CHIP;33ohm,5%,1/10W,TP,1608	
ML71	3301-001069	BEAD-SMD;120ohm,1.6x0.8x0.8mm,200mA,TP,	
ML72	3301-001069	BEAD-SMD;120ohm,1.6x0.8x0.8mm,200mA,TP,	
ML73	3301-001069	BEAD-SMD;120ohm,1.6x0.8x0.8mm,200mA,TP,	
ML74	3301-001069	BEAD-SMD;120ohm,1.6x0.8x0.8mm,200mA,TP,	
ML75	3301-001069	BEAD-SMD;120ohm,1.6x0.8x0.8mm,200mA,TP,	
ML76	3301-001069	BEAD-SMD;120ohm,1.6x0.8x0.8mm,200mA,TP,	
ML77	3301-001069	BEAD-SMD;120ohm,1.6x0.8x0.8mm,200mA,TP,	
ML78	3301-001069	BEAD-SMD;120ohm,1.6x0.8x0.8mm,200mA,TP,	
ML82	3301-001069	BEAD-SMD;120ohm,1.6x0.8x0.8mm,200mA,TP,	
ML83	3301-001069	BEAD-SMD;120ohm,1.6x0.8x0.8mm,200mA,TP,	
ML84	3301-001069	BEAD-SMD;120ohm,1.6x0.8x0.8mm,200mA,TP,	
ML9	3301-001495	BEAD-SMD;120ohm,2012,2500mA,TP,115ohm/1	
ML90	3301-001069	BEAD-SMD;120ohm,1.6x0.8x0.8mm,200mA,TP,	
ML91	3301-001069	BEAD-SMD;120ohm,1.6x0.8x0.8mm,200mA,TP,	
ML94	3301-000314	BEAD-SMD;120ohm,1.6x0.8x0.8mm,-,-,-	
MQ3	0501-000341	TR-SMALL SIGNAL;KSC1623-L,NPN,200mW,SOT-	
MQ4	0504-000128	TR-DIGITAL,-,NPN,200MW,22K/22K,SOT-23,TP	
MQ5	0504-000128	TR-DIGITAL,-,NPN,200MW,22K/22K,SOT-23,TP	
MQ6	0504-000128	TR-DIGITAL,-,NPN,200MW,22K/22K,SOT-23,TP	
MQ7	0504-000156	TR-DIGITAL;KSR2103,PNP,200MW,22K/22K,SOT	
MR10	2011-000816	R-NET;100ohm,5%,1/16W,L,CHIP,8P,TP,3	
MR100	2007-000084	R-CHIP;4.7Kohm,5%,1/10W,TP,1608	
MR101	2007-000081	R-CHIP;2.7Kohm,5%,1/10W,TP,1608	
MR102	2007-000081	R-CHIP;2.7Kohm,5%,1/10W,TP,1608	
MR103	2007-000113	R-CHIP;33ohm,5%,1/10W,TP,1608	
MR105	2007-000113	R-CHIP;33ohm,5%,1/10W,TP,1608	
MR106	2007-000074	R-CHIP;100ohm,5%,1/10W,TP,1608	
MR107	2007-000074	R-CHIP;100ohm,5%,1/10W,TP,1608	
MR108	2007-000074	R-CHIP;100ohm,5%,1/10W,TP,1608	
MR109	2007-000074	R-CHIP;100ohm,5%,1/10W,TP,1608	
MR11	2011-000816	R-NET;100ohm,5%,1/16W,L,CHIP,8P,TP,3	
MR110	2007-000084	R-CHIP;4.7Kohm,5%,1/10W,TP,1608	
MR116	3301-001069	BEAD-SMD;120ohm,1.6x0.8x0.8mm,200mA,TP,	
MR117	3301-001069	BEAD-SMD;120ohm,1.6x0.8x0.8mm,200mA,TP,	
MR12	2007-000078	R-CHIP;1Kohm,5%,1/10W,TP,1608	
MR120	3301-001069	BEAD-SMD;120ohm,1.6x0.8x0.8mm,200mA,TP,	
MR13	2007-000078	R-CHIP;1Kohm,5%,1/10W,TP,1608	
MR131	2007-000118	R-CHIP;390ohm,5%,1/10W,TP,1608	
MR134	2007-000070	R-CHIP;0ohm,5%,1/10W,TP,1608	
MR14	2007-000078	R-CHIP;1Kohm,5%,1/10W,TP,1608	
MR15	2007-000081	R-CHIP;2.7Kohm,5%,1/10W,TP,1608	
MR16	2007-000084	R-CHIP;4.7Kohm,5%,1/10W,TP,1608	
MR162	2007-000084	R-CHIP;4.7Kohm,5%,1/10W,TP,1608	
MR163	2007-000084	R-CHIP;4.7Kohm,5%,1/10W,TP,1608	
MR165	2007-000074	R-CHIP;100ohm,5%,1/10W,TP,1608	
MR166	2007-000119	R-CHIP;560ohm,5%,1/10W,TP,1608	
MR168	2007-000074	R-CHIP;100ohm,5%,1/10W,TP,1608	
MR169	2007-000074	R-CHIP;100ohm,5%,1/10W,TP,1608	
MR170	2007-000074	R-CHIP;100ohm,5%,1/10W,TP,1608	
MR19	2007-000070	R-CHIP;0ohm,5%,1/10W,TP,1608	
MR246	2007-000074	R-CHIP;100ohm,5%,1/10W,TP,1608	
MR247	2007-000074	R-CHIP;100ohm,5%,1/10W,TP,1608	
MR259	3301-001069	BEAD-SMD;120ohm,1.6x0.8x0.8mm,200mA,TP,	
MR260	3301-001069	BEAD-SMD;120ohm,1.6x0.8x0.8mm,200mA,TP,	
MR3	2007-000084	R-CHIP;4.7Kohm,5%,1/10W,TP,1608	
MR4	2007-000070	R-CHIP;0ohm,5%,1/10W,TP,1608	
MR41	2007-000084	R-CHIP;4.7Kohm,5%,1/10W,TP,1608	
MR44	2007-000084	R-CHIP;4.7Kohm,5%,1/10W,TP,1608	
MR5	2011-000816	R-NET;100ohm,5%,1/16W,L,CHIP,8P,TP,3	
MR57	2007-000084	R-CHIP;4.7Kohm,5%,1/10W,TP,1608	

Location no.	Code no.	Description & Specification	Remarks
MR59	2007-000102	R-CHIP;100Kohm,5%,1/10W,TP,1608	
MR6	2011-000816	R-NET;100ohm,5%,1/16W,L,CHIP,8P,TP,3	
MR60	2007-000113	R-CHIP;33ohm,5%,1/10W,TP,1608	
MR62	2007-000078	R-CHIP;1Kohm,5%,1/10W,TP,1608	
MR65	2007-000074	R-CHIP;100ohm,5%,1/10W,TP,1608	
MR66	2007-000074	R-CHIP;100ohm,5%,1/10W,TP,1608	
MR7	2011-000816	R-NET;100ohm,5%,1/16W,L,CHIP,8P,TP,3	
MR8	2011-000816	R-NET;100ohm,5%,1/16W,L,CHIP,8P,TP,3	
MR80	2007-000084	R-CHIP;4.7Kohm,5%,1/10W,TP,1608	
MR84	2007-000084	R-CHIP;4.7Kohm,5%,1/10W,TP,1608	
MR88	2007-000084	R-CHIP;4.7Kohm,5%,1/10W,TP,1608	
MR9	2011-000816	R-NET;100ohm,5%,1/16W,L,CHIP,8P,TP,3	
MR94	2007-000084	R-CHIP;4.7Kohm,5%,1/10W,TP,1608	
MR96	2007-000084	R-CHIP;4.7Kohm,5%,1/10W,TP,1608	
MR99	2007-000084	R-CHIP;4.7Kohm,5%,1/10W,TP,1608	
PB1	3301-001495	BEAD-SMD;120ohm,2012,2500mA,TP,115ohm/1	
PB10	3301-001495	BEAD-SMD;120ohm,2012,2500mA,TP,115ohm/1	
PB11	3301-001495	BEAD-SMD;120ohm,2012,2500mA,TP,115ohm/1	
PB12	3301-001495	BEAD-SMD;120ohm,2012,2500mA,TP,115ohm/1	
PB13	3301-001495	BEAD-SMD;120ohm,2012,2500mA,TP,115ohm/1	
PB14	3301-001495	BEAD-SMD;120ohm,2012,2500mA,TP,115ohm/1	
PB15	3301-001495	BEAD-SMD;120ohm,2012,2500mA,TP,115ohm/1	
PB16	3301-001495	BEAD-SMD;120ohm,2012,2500mA,TP,115ohm/1	
PB2	3301-001495	BEAD-SMD;120ohm,2012,2500mA,TP,115ohm/1	
PB3	3301-001495	BEAD-SMD;120ohm,2012,2500mA,TP,115ohm/1	
PB4	3301-001495	BEAD-SMD;120ohm,2012,2500mA,TP,115ohm/1	
PB5	3301-001495	BEAD-SMD;120ohm,2012,2500mA,TP,115ohm/1	
PB6	3301-001495	BEAD-SMD;120ohm,2012,2500mA,TP,115ohm/1	
PB7	3301-001495	BEAD-SMD;120ohm,2012,2500mA,TP,115ohm/1	
PB8	3301-001495	BEAD-SMD;120ohm,2012,2500mA,TP,115ohm/1	
PB9	3301-001495	BEAD-SMD;120ohm,2012,2500mA,TP,115ohm/1	
PC10	2203-000189	C-CER,CHIP;100nF,+80-20%,25V,Y5V,1608	
PC3	2401-000042	C-AL;100uF,20%,16V,GP,TP,6.3x7.5	
PC31	2401-000118	C-AL;1000uF,20%,10V,GP,TP,10x12.5,5	
PC33	2203-000189	C-CER,CHIP;100nF,+80-20%,25V,Y5V,1608	
PC34	2401-001952	C-AL;4.7uF,20%,50V,GP,TP,5x7mm,5mm	
PC4	2401-000118	C-AL;1000uF,20%,10V,GP,TP,10x12.5,5	
PC5	2203-000189	C-CER,CHIP;100nF,+80-20%,25V,Y5V,1608	
PC6	2401-001102	C-AL;330uF,20%,16V,GP,TP,8x11.5mm,5	
PC6A	2203-000189	C-CER,CHIP;100nF,+80-20%,25V,Y5V,1608	
PC9	2401-001369	C-AL;470uF,20%,16V,GP,TP,10x12.5,5	
PD1	0401-0001094	DIODE-SWITCHING;1N4148WS,75V,150mA,SOD-3	
PL11	3301-001495	BEAD-SMD;120ohm,2012,2500mA,TP,115ohm/1	
PL12	2007-000029	R-CHIP;0ohm,5%,1/8W,TP,2012	
PL15	3301-001495	BEAD-SMD;120ohm,2012,2500mA,TP,115ohm/1	
PL16	3301-001495	BEAD-SMD;120ohm,2012,2500mA,TP,115ohm/1	
PL17	3301-001495	BEAD-SMD;120ohm,2012,2500mA,TP,115ohm/1	
PL18	3301-001495	BEAD-SMD;120ohm,2012,2500mA,TP,115ohm/1	
PL19	3301-001495	BEAD-SMD;120ohm,2012,2500mA,TP,115ohm/1	
PL20	3301-001495	BEAD-SMD;120ohm,2012,2500mA,TP,115ohm/1	
PQ1	0504-000156	TR-DIGITAL;KSR2103,PNP,200MW,22K/22K,SOT	
PQ2	0501-000341	TR-SMALL SIGNAL;KSC1623-L,NPN,200mW,SOT-	
PR1	2007-000094	R-CHIP;22Kohm,5%,1/10W,TP,1608	
PR2	3301-001495	BEAD-SMD;120ohm,2012,2500mA,TP,115ohm/1	
PR4	3301-001495	BEAD-SMD;120ohm,2012,2500mA,TP,115ohm/1	
PR5	2007-000029	R-CHIP;100ohm,5%,1/8W,TP,2012	
Q1	0504-000128	TR-DIGITAL;-NPN,200MW,22K/22K,SOT-23,TP	
Q10	0505-000110	FET-SILICON;2N7002,N,60V,115mA,7.5ohm,0.	
Q2	0504-000128	TR-DIGITAL;-NPN,200MW,22K/22K,SOT-23,TP	
Q3	0504-000128	TR-DIGITAL;-NPN,200MW,22K/22K,SOT-23,TP	
Q4	0501-000632	TR-SMALL SIGNAL;2SB1197K,PNP,200mW,SOT-2	
Q5	0501-000632	TR-SMALL SIGNAL;2SB1197K,PNP,200mW,SOT-2	
Q8	0504-000128	TR-DIGITAL;-NPN,200MW,22K/22K,SOT-23,TP	
Q9	0505-000110	FET-SILICON;2N7002,N,60V,115mA,7.5ohm,0.	
QC1	2203-005148	C-CER,CHIP;100nF,10%,16V,X7R,1608	
QC2	2203-005148	C-CER,CHIP;100nF,10%,16V,X7R,1608	
QC4	2203-005148	C-CER,CHIP;100nF,10%,16V,X7R,1608	
QC5	2203-005148	C-CER,CHIP;100nF,10%,16V,X7R,1608	
QC6	2203-005148	C-CER,CHIP;100nF,10%,16V,X7R,1608	
QIC1	1204-002722	IC-EQUALIZER;BA3835F,SOP,18P,11.2x5.4mm,	
QR1	2007-000102	R-CHIP;100Kohm,5%,1/10W,TP,1608	
QR2	2007-000090	R-CHIP;10Kohm,5%,1/10W,TP,1608	
QR3	2007-000098	R-CHIP;56Kohm,5%,1/10W,TP,1608	
QR4	2007-000098	R-CHIP;56Kohm,5%,1/10W,TP,1608	
R1	2007-000074	R-CHIP;100ohm,5%,1/10W,TP,1608	
R10	2007-000074	R-CHIP;100ohm,5%,1/10W,TP,1608	
R11	2007-000074	R-CHIP;100ohm,5%,1/10W,TP,1608	
R12	2007-000074	R-CHIP;100ohm,5%,1/10W,TP,1608	

Location no.	Code no.	Description & Specification	Remarks
R13	2007-000074	R-CHIP;100ohm,5%,1/10W,TP,1608	
R14	2007-000074	R-CHIP;100ohm,5%,1/10W,TP,1608	
R2	2007-000074	R-CHIP;100ohm,5%,1/10W,TP,1608	
R28	2007-000077	R-CHIP;470ohm,5%,1/10W,TP,1608	
R29	2007-000075	R-CHIP;220ohm,5%,1/10W,TP,1608	
R3	2007-000090	R-CHIP;10Kohm,5%,1/10W,TP,1608	
R30	2007-000075	R-CHIP;220ohm,5%,1/10W,TP,1608	
R31	2007-000075	R-CHIP;220ohm,5%,1/10W,TP,1608	
R34	2007-000084	R-CHIP;4.7Kohm,5%,1/10W,TP,1608	
R35	2007-000084	R-CHIP;4.7Kohm,5%,1/10W,TP,1608	
R4	2007-000029	R-CHIP;0ohm,5%,1/8W,TP,2012	
R44	2007-000097	R-CHIP;47Kohm,5%,1/10W,TP,1608	
R45	2007-000078	R-CHIP;1Kohm,5%,1/10W,TP,1608	
R5	2007-000029	R-CHIP;0ohm,5%,1/8W,TP,2012	
R9	2007-000074	R-CHIP;100ohm,5%,1/10W,TP,1608	
RC04R	2401-002300	C-AL;47##F,20%,50V,GP,TP,6.3x11.5mm	
RC1	2203-000257	C-CER,CHIP;10nF,10%,50V,X7R,1608	
RC10	2203-000189	C-CER,CHIP;100nF,+80-20%,25V,Y5V,1608	
RC102	2401-001502	C-AL;47uF,20%,16V,GP,TP,6.3x7.5,2.5	
RC11	2203-005065	C-CER,CHIP;1000nF,+80-20%,10V,Y5V,1608	
RC12	2203-000236	C-CER,CHIP;0.1nF,5%,50V,C0G,1608	
RC13	2203-000189	C-CER,CHIP;100nF,+80-20%,25V,Y5V,1608	
RC14	2401-000042	C-AL;100uF,20%,16V,GP,TP,6.3x7.5	
RC19	2203-000189	C-CER,CHIP;100nF,+80-20%,25V,Y5V,1608	
RC2	2203-000280	C-CER,CHIP;0.01nF,0.5pF,50V,C0G,1608	
RC20	2203-000257	C-CER,CHIP;10nF,10%,50V,X7R,1608	
RC20A	2203-005148	C-CER,CHIP;100nF,10%,16V,X7R,1608	
RC21	2203-005819	C-CER,CHIP;1000nF,+80-20%,16V,Y5V,-,1608	
RC21A	2203-000257	C-CER,CHIP;10nF,10%,50V,X7R,1608	
RC22	2401-000909	C-AL;22uF,20%,16V,GP,TP,5x5.2,5	
RC23	2203-000440	C-CER,CHIP;1nF,10%,50V,X7R,1608	
RC24	2203-000440	C-CER,CHIP;1nF,10%,50V,X7R,1608	
RC25	2401-000042	C-AL;100uF,20%,16V,GP,TP,6.3x7.5	
RC26	2401-000042	C-AL;100uF,20%,16V,GP,TP,6.3x7.5	
RC27	2203-001126	C-CER,CHIP;0.68nF,10%,50V,X7R,1608	
RC28	2203-001652	C-CER,CHIP;470nF,+80-20%,16V,Y5V,1608	
RC29	2203-000257	C-CER,CHIP;10nF,10%,50V,X7R,1608	
RC3	2203-000280	C-CER,CHIP;0.01nF,0.5pF,50V,C0G,1608	
RC31	2203-001652	C-CER,CHIP;470nF,+80-20%,16V,Y5V,1608	
RC35	2401-001355	C-AL;470uF,20%,10V,GP,TP,8x11.5mm,5	
RC36	2203-000257	C-CER,CHIP;10nF,10%,50V,X7R,1608	
RC39	2401-000042	C-AL;100uF,20%,16V,GP,TP,6.3x7.5	
RC4	2203-005819	C-CER,CHIP;1000nF,+80-20%,16V,Y5V,-,1608	
RC40	2203-001126	C-CER,CHIP;0.68nF,10%,50V,X7R,1608	
RC41	2203-005148	C-CER,CHIP;100nF,10%,16V,X7R,1608	
RC42	2203-000440	C-CER,CHIP;1nF,10%,50V,X7R,1608	
RC43	2203-000236	C-CER,CHIP;0.1nF,5%,50V,C0G,1608	
RC44	2203-002398	C-CER,CHIP;22nF,10%,50V,X7R,1608	
RC47	2203-000888	C-CER,CHIP;4.7nF,10%,50V,X7R,1608	
RC48	2203-000440	C-CER,CHIP;1nF,10%,50V,X7R,1608	
RC49	2203-005015	C-CER,CHIP;150nF,+80-20%,16V,Y5V,1608	
RC5	2203-000189	C-CER,CHIP;100nF,+80-20%,25V,Y5V,1608	
RC50	2203-005148	C-CER,CHIP;100nF,10%,16V,X7R,1608	
RC51	2401-000909	C-AL;22uF,20%,16V,GP,TP,5x5.2,5	
RC52	2203-000257	C-CER,CHIP;10nF,10%,50V,X7R,1608	
RC52A	2203-005819	C-CER,CHIP;1000nF,+80-20%,16V,Y5V,-,1608	
RC58	2203-000236	C-CER,CHIP;0.1nF,5%,50V,C0G,1608	
RC60	2203-005148	C-CER,CHIP;100nF,10%,16V,X7R,1608	
RC61	2203-005148	C-CER,CHIP;100nF,10%,16V,X7R,1608	
RC62	2203-000280	C-CER,CHIP;0.01nF,0.5pF,50V,C0G,1608	
RC7	2203-000236	C-CER,CHIP;0.1nF,5%,50V,C0G,1608	
RC71	2203-005148	C-CER,CHIP;100nF,10%,16V,X7R,1608	
RC72	2401-000407	C-AL;10uF,20%,16V,GP,TP,3.5x5.2,5	
RC8	2203-000257	C-CER,CHIP;10nF,10%,50V,X7R,1608	
RC9	2401-000042	C-AL;100uF,20%,16V,GP,TP,6.3x7.5	
RD1	0407-000116	DIODE-ARRAY;DAP202K,80V,100mA,CK2-3,SOT-	
RD2	0407-000116	DIODE-ARRAY;DAP202K,80V,100mA,CK2-3,SOT-	
REG2	1203-002935	IC-POS.ADJUST REG.;AIC1117ACE,TO-252,3P	
RK1	2007-001071	R-CHIP;6.8Kohm,5%,1/8W,TP,2012	
RK10	2007-000300	R-CHIP;10Kohm,5%,1/8W,TP,2012	
RK11	2007-000300	R-CHIP;10Kohm,5%,1/8W,TP,2012	
RK12	2007-000029	R-CHIP;0ohm,5%,1/8W,TP,2012	
RK14	2007-000981	R-CHIP;5.6Kohm,5%,1/8W,TP,2012	
RK15	2007-000409	R-CHIP;15Kohm,5%,1/8W,TP,2012	
RK16	2007-000457	R-CHIP;18Kohm,5%,1/8W,TP,2012	
RK17	2007-000872	R-CHIP;4.7Kohm,5%,1/8W,TP,2012	
RK18	2007-000300	R-CHIP;10Kohm,5%,1/8W,TP,2012	

Location no.	Code no.	Description & Specification	Remarks
RK2	2007-001071	R-CHIP:6.8Kohm,5%,1/8W,TP,2012	
RK3	2007-001071	R-CHIP:6.8Kohm,5%,1/8W,TP,2012	
RK4	2007-001071	R-CHIP:6.8Kohm,5%,1/8W,TP,2012	
RK5	2007-001177	R-CHIP:8.2Kohm,5%,1/8W,TP,2012	
RK6	2007-000468	R-CHIP:1Kohm,5%,1/8W,TP,2012	
RK7	2007-000300	R-CHIP:10Kohm,5%,1/8W,TP,2012	
RK8	2007-000409	R-CHIP:15Kohm,5%,1/8W,TP,2012	
RK9	2007-000300	R-CHIP:10Kohm,5%,1/8W,TP,2012	
RL1	3301-001069	BEAD-SMD;120ohm,1.6x0.8x0.8mm,200mA,TP,	
RL2	3301-001069	BEAD-SMD;120ohm,1.6x0.8x0.8mm,200mA,TP,	
RL3	3301-001495	BEAD-SMD;120ohm,2012,2500mA,TP,115ohm/1	
RL4	3301-001495	BEAD-SMD;120ohm,2012,2500mA,TP,115ohm/1	
RL5	3301-001495	BEAD-SMD;120ohm,2012,2500mA,TP,115ohm/1	
RL7	3301-001495	BEAD-SMD;120ohm,2012,2500mA,TP,115ohm/1	
RL8	3301-001495	BEAD-SMD;120ohm,2012,2500mA,TP,115ohm/1	
RL9	3301-001495	BEAD-SMD;120ohm,2012,2500mA,TP,115ohm/1	
RR101	2007-000082	R-CHIP;3.3Kohm,5%,1/10W,TP,1608	
RR11	2007-000070	R-CHIP;0ohm,5%,1/10W,TP,1608	
RR13	2007-000029	R-CHIP;0ohm,5%,1/8W,TP,2012	
RR14	2007-000113	R-CHIP;33ohm,5%,1/10W,TP,1608	
RR15	2007-000090	R-CHIP;10Kohm,5%,1/10W,TP,1608	
RR16	2007-001179	R-CHIP;8.2Kohm,5%,1/10W,TP,1608	
RR17	2007-000483	R-CHIP;10HM,5%,1/8W,TP,2012	
RR18	2007-000483	R-CHIP;1OHM,5%,1/8W,TP,2012	
RR19	2007-001179	R-CHIP;8.2Kohm,5%,1/10W,TP,1608	
RR20	2007-000052	R-CHIP;10Kohm,1%,1/10W,TP,1608	
RR21	2007-000125	R-CHIP;3.9Kohm,5%,1/10W,TP,1608	
RR23	2007-000124	R-CHIP;2.2Kohm,5%,1/10W,TP,1608	
RR24	2007-000458	R-CHIP;18Kohm,5%,1/10W,TP,1608	
RR26	2007-000084	R-CHIP;4.7Kohm,5%,1/10W,TP,1608	
RR27	2007-000109	R-CHIP;1Mohm,5%,1/10W,TP,1608	
RR28	2007-000094	R-CHIP;22Kohm,5%,1/10W,TP,1608	
RR29	2007-000070	R-CHIP;0ohm,5%,1/10W,TP,1608	
RR30	2007-000070	R-CHIP;0ohm,5%,1/10W,TP,1608	
RR33	2007-000120	R-CHIP;680ohm,5%,1/10W,TP,1608	
RR34	2007-000078	R-CHIP;1Kohm,5%,1/10W,TP,1608	
RR35	2007-000090	R-CHIP;10Kohm,5%,1/10W,TP,1608	
RR36	2007-000090	R-CHIP;10Kohm,5%,1/10W,TP,1608	
RR37	2007-000091	R-CHIP;12Kohm,5%,1/10W,TP,1608	
RR38	2007-000090	R-CHIP;10Kohm,5%,1/10W,TP,1608	
RR39	2007-000483	R-CHIP;1OHM,5%,1/8W,TP,2012	
RR40	2007-000483	R-CHIP;1OHM,5%,1/8W,TP,2012	
RR41	2007-000090	R-CHIP;10Kohm,5%,1/10W,TP,1608	
RR42	2007-000090	R-CHIP;10Kohm,5%,1/10W,TP,1608	
RR43	2007-000070	R-CHIP;0ohm,5%,1/10W,TP,1608	
RR52	2007-000077	R-CHIP;470ohm,5%,1/10W,TP,1608	
RR54	2007-000070	R-CHIP;0ohm,5%,1/10W,TP,1608	
RR55	2007-000070	R-CHIP;0ohm,5%,1/10W,TP,1608	
RR56	2007-000070	R-CHIP;0ohm,5%,1/10W,TP,1608	
RR57	2007-000078	R-CHIP;1Kohm,5%,1/10W,TP,1608	
RR58	2007-000090	R-CHIP;10Kohm,5%,1/10W,TP,1608	
RR59	2007-000070	R-CHIP;0ohm,5%,1/10W,TP,1608	
RR60	2007-000078	R-CHIP;1Kohm,5%,1/10W,TP,1608	
RR61	2007-000078	R-CHIP;1Kohm,5%,1/10W,TP,1608	
RR62	2007-000090	R-CHIP;10Kohm,5%,1/10W,TP,1608	
RR63	2007-000097	R-CHIP;47Kohm,5%,1/10W,TP,1608	
RR64	2007-000097	R-CHIP;47Kohm,5%,1/10W,TP,1608	
RR65	2007-000078	R-CHIP;1Kohm,5%,1/10W,TP,1608	
RR65A	2007-000090	R-CHIP;10Kohm,5%,1/10W,TP,1608	
RR66	2007-000078	R-CHIP;1Kohm,5%,1/10W,TP,1608	
RR66A	2007-000090	R-CHIP;10Kohm,5%,1/10W,TP,1608	
RR67	2007-000308	R-CHIP;10ohm,5%,1/8W,TP,2012	
RR67A	2007-000308	R-CHIP;10ohm,5%,1/8W,TP,2012	
RR68	2007-000308	R-CHIP;10ohm,5%,1/8W,TP,2012	
RR68A	2007-000308	R-CHIP;10ohm,5%,1/8W,TP,2012	
RR69	2007-000070	R-CHIP;0ohm,5%,1/10W,TP,1608	
RR70	2007-000070	R-CHIP;0ohm,5%,1/10W,TP,1608	
RR72	2007-000070	R-CHIP;0ohm,5%,1/10W,TP,1608	
RR73	2007-000070	R-CHIP;0ohm,5%,1/10W,TP,1608	
RR75	2007-000070	R-CHIP;0ohm,5%,1/10W,TP,1608	
RR76	2007-000070	R-CHIP;0ohm,5%,1/10W,TP,1608	
RR77	2007-000122	R-CHIP;1.2Kohm,5%,1/10W,TP,1608	
RR78	2007-000078	R-CHIP;1Kohm,5%,1/10W,TP,1608	
RR79	2007-000122	R-CHIP;1.2Kohm,5%,1/10W,TP,1608	
RR80	2007-000078	R-CHIP;1Kohm,5%,1/10W,TP,1608	
RR81	2007-000070	R-CHIP;0ohm,5%,1/10W,TP,1608	
RR82	2007-000070	R-CHIP;0ohm,5%,1/10W,TP,1608	
RR83B	2007-000106	R-CHIP;220Kohm,5%,1/10W,TP,1608	

Location no.	Code no.	Description & Specification	Remarks
RR84A	2007-000090	R-CHIP;10Kohm,5%,1/10W,TP,1608	
RR85	2007-000090	R-CHIP;10Kohm,5%,1/10W,TP,1608	
RR85A	2007-000070	R-CHIP;0ohm,5%,1/10W,TP,1608	
RR87	2007-000070	R-CHIP;0ohm,5%,1/10W,TP,1608	
RR88	2007-000098	R-CHIP;56Kohm,5%,1/10W,TP,1608	
RR89	2007-000098	R-CHIP;56Kohm,5%,1/10W,TP,1608	
RR90	2007-000102	R-CHIP;100Kohm,5%,1/10W,TP,1608	
RR92	2007-000102	R-CHIP;100Kohm,5%,1/10W,TP,1608	
SC1L	2203-000236	C-CER,CHIP;0.1nF,5%,50V,C0G,1608	
SC1R	2203-000236	C-CER,CHIP;0.1nF,5%,50V,C0G,1608	
SC2L	2203-000236	C-CER,CHIP;0.1nF,5%,50V,C0G,1608	
SC2R	2203-000236	C-CER,CHIP;0.1nF,5%,50V,C0G,1608	
SC3L	2203-000236	C-CER,CHIP;0.1nF,5%,50V,C0G,1608	
SC3R	2203-000236	C-CER,CHIP;0.1nF,5%,50V,C0G,1608	
SC5	2401-001502	C-AL;47uF,20%,16V,GP,TP,6.3x5.2,5	
SC6	2401-001502	C-AL;47uF,20%,16V,GP,TP,6.3x5.2,5	
SC6L	2203-000998	C-CER,CHIP;0.047nF,5%,50V,C0G,1608	
SC6R	2203-000998	C-CER,CHIP;0.047nF,5%,50V,C0G,1608	
SC7L	2203-000998	C-CER,CHIP;0.047nF,5%,50V,C0G,1608	
SC7R	2203-000998	C-CER,CHIP;0.047nF,5%,50V,C0G,1608	
SC8L	2401-000042	C-AL;100uF,20%,16V,GP,TP,6.3x7.5	
SC8R	2401-000042	C-AL;100uF,20%,16V,GP,TP,6.3x7.5	
SC9L	2203-000236	C-CER,CHIP;0.1nF,5%,50V,C0G,1608	
SC9R	2203-000236	C-CER,CHIP;0.1nF,5%,50V,C0G,1608	
SCREW	6003-0001375	SCREW-TAPTITE;BH,+,-,B,M3,L8,ZPC(WHT),SW	
SIC	1201-000163	IC-OP AMP;4560,SOP,8P,173ML,DUAL,100V/m	
SL1L	2703-000404	INDUCTOR-SMD;220uH,10%,3225	
SL1R	2703-000404	INDUCTOR-SMD;220uH,10%,3225	
SP101	3716-001270	TERMINAL-BLOCK;WIRE TYPE,12P,4.6mm,40V,5	
SR1	2007-000074	R-CHIP;100ohm,5%,1/10W,TP,1608	
SR10L	2007-000113	R-CHIP;33ohm,5%,1/10W,TP,1608	
SR10R	2007-000052	R-CHIP;10Kohm,1%,1/10W,TP,1608	
SR2	2007-000074	R-CHIP;100ohm,5%,1/10W,TP,1608	
SR2L	2007-000094	R-CHIP;22Kohm,5%,1/10W,TP,1608	
SR2R	2007-000094	R-CHIP;22Kohm,5%,1/10W,TP,1608	
SR4L	2007-000094	R-CHIP;22Kohm,5%,1/10W,TP,1608	
SR4R	2007-000094	R-CHIP;22Kohm,5%,1/10W,TP,1608	
SR5L	2007-000052	R-CHIP;10Kohm,1%,1/10W,TP,1608	
SR5R	2007-000052	R-CHIP;10Kohm,1%,1/10W,TP,1608	
SR6L	2007-000052	R-CHIP;10Kohm,1%,1/10W,TP,1608	
SR6R	2007-000052	R-CHIP;10Kohm,1%,1/10W,TP,1608	
SR7L	2007-000097	R-CHIP;47Kohm,5%,1/10W,TP,1608	
SR7R	2007-000097	R-CHIP;47Kohm,5%,1/10W,TP,1608	
SR8L	2007-000097	R-CHIP;47Kohm,5%,1/10W,TP,1608	
SR8R	2007-000097	R-CHIP;47Kohm,5%,1/10W,TP,1608	
SR9L	2007-000052	R-CHIP;10Kohm,1%,1/10W,TP,1608	
SR9R	2007-000113	R-CHIP;33ohm,5%,1/10W,TP,1608	
TC2	2203-005148	C-CER,CHIP;100nF,10%,16V,X7R,1608	
TC3	2401-001126	C-AL;330uF,20%,25V,WT,TP,10x12.5,5	
TREG1	1203-000294	IC-POSI.FIXED REG.;7808,TO-220,3P,-,PLAS	
TUNER	AH40-00129A	TUNER;KST-MW004FV1-E50LKOR,HT-Q40,FM	
U7	1205-003165	IC-TRANSMITTER;ES7120T,12QFP,80P,12x12mm,	
UB1	3301-001495	BEAD-SMD;120ohm,2012,2500mA,TP,115ohm/1	
UB2	3301-001495	BEAD-SMD;120ohm,2012,2500mA,TP,115ohm/1	
UB3	3301-001495	BEAD-SMD;120ohm,2012,2500mA,TP,115ohm/1	
UB4	3301-001495	BEAD-SMD;120ohm,2012,2500mA,TP,115ohm/1	
UB5	3301-001495	BEAD-SMD;120ohm,2012,2500mA,TP,115ohm/1	
UB6	3301-001495	BEAD-SMD;120ohm,2012,2500mA,TP,115ohm/1	
UC1	2401-000759	C-AL;220nF,20%,50V,GP,TP,5x11mm,5mm	
UC10	2203-000189	C-CER,CHIP;100nF,+80-20%,25V,Y5V,1608	
UC11	2203-000626	C-CER,CHIP;0.022nF,5%,50V,C0G,1608	
UC12	2203-000626	C-CER,CHIP;0.022nF,5%,50V,C0G,1608	
UC13	2203-000972	C-CER,CHIP;47nF,10%,16V,X7R,1608	
UC14	2203-000189	C-CER,CHIP;100nF,+80-20%,25V,Y5V,1608	
UC15	2203-000189	C-CER,CHIP;100nF,+80-20%,25V,Y5V,1608	
UC16	2203-000189	C-CER,CHIP;100nF,+80-20%,25V,Y5V,1608	
UC2	2401-000042	C-AL;100uF,20%,16V,GP,TP,6.3x7.5	
UC22	2203-000189	C-CER,CHIP;100nF,+80-20%,25V,Y5V,1608	
UC3	2409-000123	C-EDL;47000uF,4uA,5.5V,-,BK,-,5mm	
UC4	2401-001502	C-AL;47uF,20%,16V,GP,TP,6.3x5.2,5	
UC5	2203-000189	C-CER,CHIP;100nF,+80-20%,25V,Y5V,1608	
UC6	2203-000189	C-CER,CHIP;100nF,+80-20%,25V,Y5V,1608	
UC7	2203-000189	C-CER,CHIP;100nF,+80-20%,25V,Y5V,1608	
UC8	2203-000189	C-CER,CHIP;100nF,+80-20%,25V,Y5V,1608	
UC9	2203-000189	C-CER,CHIP;100nF,+80-20%,25V,Y5V,1608	
UCN1	3711-000471	HEADER-BOARD TO CABLE;3WALL,4P,1R,2mm,ST	
UD1	0401-001099	DIODE-SWITCHING;1N4148WS,75V,150mA,SOD-3	

Location no.	Code no.	Description & Specification	Remarks
UD3	0401-001099	DIODE-SWITCHING;1N4148WS,75V,150mA,SOD-3	
UD4	0401-001099	DIODE-SWITCHING;1N4148WS,75V,150mA,SOD-3	
UD5	0401-001099	DIODE-SWITCHING;1N4148WS,75V,150mA,SOD-3	
UD6	0401-001099	DIODE-SWITCHING;1N4148WS,75V,150mA,SOD-3	
UIC1	0903-001405	IC-MICROCONTROLLER;LC87F5CC8A,8Bit,QFP,1	
UQ1	0501-000341	TR-SMALL SIGNAL;KSC1623-L,NPN,200mW,SOT-	
UR1	2007-000074	R-CHIP;100ohm,5%,1/10W,TP,1608	
UR10	2007-000402	R-CHIP;150ohm,5%,1/10W,TP,1608	
UR103	2007-000087	R-CHIP;6.8Kohm,5%,1/10W,TP,1608	
UR104	2007-000124	R-CHIP;2.2Kohm,5%,1/10W,TP,1608	
UR105	2007-000084	R-CHIP;4.7Kohm,5%,1/10W,TP,1608	
UR106	2007-000074	R-CHIP;100ohm,5%,1/10W,TP,1608	
UR11	2007-000081	R-CHIP;2.7Kohm,5%,1/10W,TP,1608	
UR110	2007-000102	R-CHIP;100Kohm,5%,1/10W,TP,1608	
UR111	2007-000102	R-CHIP;100Kohm,5%,1/10W,TP,1608	
UR112	2007-000102	R-CHIP;100Kohm,5%,1/10W,TP,1608	
UR113	2007-000102	R-CHIP;100Kohm,5%,1/10W,TP,1608	
UR114	2007-000458	R-CHIP;18Kohm,5%,1/10W,TP,1608	
UR115	2007-000090	R-CHIP;10Kohm,5%,1/10W,TP,1608	
UR116	2007-000090	R-CHIP;10Kohm,5%,1/10W,TP,1608	
UR12	2007-000106	R-CHIP;220Kohm,5%,1/10W,TP,1608	
UR13	2007-000072	R-CHIP;47ohm,5%,1/10W,TP,1608	
UR14	2007-000074	R-CHIP;100ohm,5%,1/10W,TP,1608	
UR146	2007-000097	R-CHIP;47Kohm,5%,1/10W,TP,1608	
UR15	2007-000074	R-CHIP;100ohm,5%,1/10W,TP,1608	
UR16	2007-000078	R-CHIP;1Kohm,5%,1/10W,TP,1608	
UR17	2007-000078	R-CHIP;1Kohm,5%,1/10W,TP,1608	
UR18	2007-000074	R-CHIP;100ohm,5%,1/10W,TP,1608	
UR19	2007-000074	R-CHIP;100ohm,5%,1/10W,TP,1608	
UR2	2007-000074	R-CHIP;100ohm,5%,1/10W,TP,1608	
UR20	2007-000074	R-CHIP;100ohm,5%,1/10W,TP,1608	
UR21	2007-000074	R-CHIP;100ohm,5%,1/10W,TP,1608	
UR22	2007-000074	R-CHIP;100ohm,5%,1/10W,TP,1608	
UR23	2007-000074	R-CHIP;100ohm,5%,1/10W,TP,1608	
UR24	2007-000074	R-CHIP;100ohm,5%,1/10W,TP,1608	
UR25	2007-000074	R-CHIP;100ohm,5%,1/10W,TP,1608	
UR26	2007-000074	R-CHIP;100ohm,5%,1/10W,TP,1608	
UR27	2007-000074	R-CHIP;100ohm,5%,1/10W,TP,1608	
UR28	2007-000078	R-CHIP;1Kohm,5%,1/10W,TP,1608	
UR29	2007-000078	R-CHIP;1Kohm,5%,1/10W,TP,1608	
UR3	2007-000074	R-CHIP;100ohm,5%,1/10W,TP,1608	
UR30	2007-000074	R-CHIP;100ohm,5%,1/10W,TP,1608	
UR31	2007-000074	R-CHIP;100ohm,5%,1/10W,TP,1608	
UR32	2007-000074	R-CHIP;100ohm,5%,1/10W,TP,1608	
UR33	2007-000074	R-CHIP;100ohm,5%,1/10W,TP,1608	
UR34	2007-000074	R-CHIP;100ohm,5%,1/10W,TP,1608	
UR35	2007-000074	R-CHIP;100ohm,5%,1/10W,TP,1608	
UR36	2007-000074	R-CHIP;100ohm,5%,1/10W,TP,1608	
UR37	2007-000074	R-CHIP;100ohm,5%,1/10W,TP,1608	
UR38	2007-000074	R-CHIP;100ohm,5%,1/10W,TP,1608	
UR39	2007-000074	R-CHIP;100ohm,5%,1/10W,TP,1608	
UR4	2007-000074	R-CHIP;100ohm,5%,1/10W,TP,1608	
UR40	2007-000074	R-CHIP;100ohm,5%,1/10W,TP,1608	
UR41	2007-000074	R-CHIP;100ohm,5%,1/10W,TP,1608	
UR42	2007-000074	R-CHIP;100ohm,5%,1/10W,TP,1608	
UR43	2007-000074	R-CHIP;100ohm,5%,1/10W,TP,1608	
UR45	2007-000090	R-CHIP;10Kohm,5%,1/10W,TP,1608	
UR46	2007-000070	R-CHIP;0ohm,5%,1/10W,TP,1608	
UR47	2007-000070	R-CHIP;0ohm,5%,1/10W,TP,1608	
UR5	2007-000078	R-CHIP;1Kohm,5%,1/10W,TP,1608	
UR6	2007-000074	R-CHIP;100ohm,5%,1/10W,TP,1608	
UR61	2007-000078	R-CHIP;1Kohm,5%,1/10W,TP,1608	
UR7	2007-000305	R-CHIP;10Mohm,5%,1/10W,TP,1608	
UR70	2007-000090	R-CHIP;10Kohm,5%,1/10W,TP,1608	
UR71	2007-000090	R-CHIP;10Kohm,5%,1/10W,TP,1608	
UR72	2007-000090	R-CHIP;10Kohm,5%,1/10W,TP,1608	
UR75	2007-000090	R-CHIP;10Kohm,5%,1/10W,TP,1608	
UR76	2007-000090	R-CHIP;10Kohm,5%,1/10W,TP,1608	
UR8	2007-001026	R-CHIP;560Kohm,5%,1/10W,TP,1608	
UR84	2007-000102	R-CHIP;100Kohm,5%,1/10W,TP,1608	
UR85	2007-000074	R-CHIP;100ohm,5%,1/10W,TP,1608	
UR86	2007-000074	R-CHIP;100ohm,5%,1/10W,TP,1608	
UR87	2007-000074	R-CHIP;100ohm,5%,1/10W,TP,1608	
UR9	2007-000109	R-CHIP;1Mohm,5%,1/10W,TP,1608	
UR92	2007-000078	R-CHIP;1Kohm,5%,1/10W,TP,1608	
UR93	2007-000078	R-CHIP;1Kohm,5%,1/10W,TP,1608	
UR94	2007-000078	R-CHIP;1Kohm,5%,1/10W,TP,1608	
UR95	2007-000078	R-CHIP;1Kohm,5%,1/10W,TP,1608	

Location no.	Code no.	Description & Specification	Remarks
USC1	2203-005148	C-CER,CHIP;100nF,10%,16V,X7R,1608	
USC10	2203-000384	C-CER,CHIP;0.015nF,5%,50V,C0G,1608	
USC11	2203-005148	C-CER,CHIP;100nF,10%,16V,X7R,1608	
USC12	2203-005148	C-CER,CHIP;100nF,10%,16V,X7R,1608	
USC13	2203-005148	C-CER,CHIP;100nF,10%,16V,X7R,1608	
USC14	2401-000407	C-AL;10UF,20%,16V,GP,TP,3.5X5.2,5	
USC2	2203-001083	C-CER,CHIP;0.0050nF,0.1pF,50V,NP0,1608	
USC3	2203-001083	C-CER,CHIP;0.0050nF,0.1pF,50V,NP0,1608	
USC4	2203-000440	C-CER,CHIP;1nF,10%,50V,X7R,1608	
USC5	2203-005148	C-CER,CHIP;100nF,10%,16V,X7R,1608	
USC6	2203-000280	C-CER,CHIP;0.01nF,0.5pF,50V,C0G,1608	
USC7	2203-000280	C-CER,CHIP;0.01nF,0.5pF,50V,C0G,1608	
USC8	2203-005148	C-CER,CHIP;100nF,10%,16V,X7R,1608	
USC9	2203-000384	C-CER,CHIP;0.015nF,5%,50V,C0G,1608	
USIC1	0904-002088	IC-USC;UB19022,8Bit,QFP,48P,9x9mm,48M	
USL1	3301-001495	BEAD-SMD;120ohm,2012,2500mA,TP,115ohm/1	
USL2	3301-001495	BEAD-SMD;120ohm,2012,2500mA,TP,115ohm/1	
USL4	3301-001495	BEAD-SMD;120ohm,2012,2500mA,TP,115ohm/1	
USL5	2703-000185	INDUCTOR-SMD;3.3uH,10%,2012	
USR10	2007-000113	R-CHIP;33ohm,5%,1/10W,TP,1608	
USR11	2007-000113	R-CHIP;33ohm,5%,1/10W,TP,1608	
USR12	2007-000113	R-CHIP;33ohm,5%,1/10W,TP,1608	
USR13	2007-000113	R-CHIP;33ohm,5%,1/10W,TP,1608	
USR14	2007-000113	R-CHIP;33ohm,5%,1/10W,TP,1608	
USR15	2007-000113	R-CHIP;33ohm,5%,1/10W,TP,1608	
USR2	2007-000113	R-CHIP;33ohm,5%,1/10W,TP,1608	
USR21	2007-000113	R-CHIP;33ohm,5%,1/10W,TP,1608	
USR22	2007-000113	R-CHIP;33ohm,5%,1/10W,TP,1608	
USR23	2007-000113	R-CHIP;33ohm,5%,1/10W,TP,1608	
USR24	2007-000113	R-CHIP;33ohm,5%,1/10W,TP,1608	
USR25	2007-000113	R-CHIP;33ohm,5%,1/10W,TP,1608	
USR26	2007-000070	R-CHIP;0ohm,5%,1/10W,TP,1608	
USR27	2007-000070	R-CHIP;0ohm,5%,1/10W,TP,1608	
USR28	2007-000102	R-CHIP;100Kohm,5%,1/10W,TP,1608	
USR29	2007-000102	R-CHIP;100Kohm,5%,1/10W,TP,1608	
USR3	2007-000077	R-CHIP;470ohm,5%,1/10W,TP,1608	
USR30	2007-000070	R-CHIP;0ohm,5%,1/10W,TP,1608	
USR5	2007-000092	R-CHIP;15Kohm,5%,1/10W,TP,1608	
USR6	2007-000092	R-CHIP;15Kohm,5%,1/10W,TP,1608	
USR7	2007-000109	R-CHIP;1Mohm,5%,1/10W,TP,1608	
USR8	2007-000113	R-CHIP;33ohm,5%,1/10W,TP,1608	
USR9	2007-000113	R-CHIP;33ohm,5%,1/10W,TP,1608	
UX1	2801-003863	CRYSTAL-UNIT;48MHz,30ppm,28-AAA,18pF,80u	
VC01	2203-005148	C-CER,CHIP;100nF,10%,16V,X7R,1608	
VC02	2401-000042	C-AL;100uF,20%,16V,GP,TP,6.3x7.5	
VC03	2203-005148	C-CER,CHIP;100nF,10%,16V,X7R,1608	
VC04	2203-005148	C-CER,CHIP;100nF,10%,16V,X7R,1608	
VC05	2203-005148	C-CER,CHIP;100nF,10%,16V,X7R,1608	
VC11	2203-000280	C-CER,CHIP;0.01nF,0.5pF,50V,C0G,1608	
VC12	2203-000280	C-CER,CHIP;0.01nF,0.5pF,50V,C0G,1608	
VC13	2203-000280	C-CER,CHIP;0.01nF,0.5pF,50V,C0G,1608	
VC16	2203-005819	C-CER,CHIP;1000nF,+80-20%,16V,Y5V,-,1608	
VC17	2203-005819	C-CER,CHIP;1000nF,+80-20%,16V,Y5V,-,1608	
VC18	2203-005819	C-CER,CHIP;1000nF,+80-20%,16V,Y5V,-,1608	
VC19	2401-000407	C-AL;10UF,20%,16V,GP,TP,3.5X5.2,5	
VC25	2401-001092	C-AL;330uF,20%,10V,GP,-,8x11.5,2.5m	
VC28	2203-000280	C-CER,CHIP;0.01nF,0.5pF,50V,C0G,1608	
VC30	2401-001092	C-AL;330uF,20%,10V,GP,-,8x11.5,2.5m	
VC31	2401-001092	C-AL;330uF,20%,10V,GP,-,8x11.5,2.5m	
VC32	2401-001092	C-AL;330uF,20%,10V,GP,-,8x11.5,2.5m	
VC33	2401-000042	C-AL;100uF,20%,16V,GP,TP,6.3x7.5	
VC34	2401-000042	C-AL;100uF,20%,16V,GP,TP,6.3x7.5	
VC35	2401-000042	C-AL;100uF,20%,16V,GP,TP,6.3x7.5	
VC36	2401-000042	C-AL;100uF,20%,16V,GP,TP,6.3x7.5	
VIC1	1204-001978	IC-VIDEO PROCESS;LA73054,-,36P,-,SSOP,7V	
VJ1	3722-002576	JACK-PIN;3P,NI,RED/WHT/YEL,ANGLE	
VJ3	3722-002147	JACK-PIN;3P,NI,RED/BLU/GRN,ANGLE	
VL01	3301-001495	BEAD-SMD;120ohm,2012,2500mA,TP,115ohm/1	
VL02	3301-001495	BEAD-SMD;120ohm,2012,2500mA,TP,115ohm/1	
VL11	2703-002238	INDUCTOR-SMD;1uH,5%,2012	
VL12	2007-000070	R-CHIP;0ohm,5%,1/10W,TP,1608	
VL13	3301-001069	BEAD-SMD;120ohm,1.6x0.8x0.8mm,200mA,TP,	
VL14	3301-001069	BEAD-SMD;120ohm,1.6x0.8x0.8mm,200mA,TP,	
VL15	3301-001069	BEAD-SMD;120ohm,1.6x0.8x0.8mm,200mA,TP,	
VL16	3301-001069	BEAD-SMD;120ohm,1.6x0.8x0.8mm,200mA,TP,	
VL7	2703-002238	INDUCTOR-SMD;1uH,5%,2012	
VL8	2703-002238	INDUCTOR-SMD;1uH,5%,2012	





Location no.	Code no.	Description & Specification	Remarks
L1	AH26-00227A	TRANS RF;-;-;-;-;-;,105KHZ,7.6 X 7.6,-	
L2	2701-000298	INDUCTOR-AXIAL;470UH,10%,4298	
L3	2701-000111	INDUCTOR-AXIAL;100UH,10%,2534	
L4	2701-000111	INDUCTOR-AXIAL;100UH,10%,2534	
LED1	0601-001490	LED;INVERTER,BLUE,3MM,465-477NM	
LED10	0601-001490	LED;INVERTER,BLUE,3MM,465-477NM	
LED11	0601-001739	LED;ROUND(Inverter),RED,3mm,660nm,	
LED2	0601-001490	LED;INVERTER,BLUE,3MM,465-477NM	
LED3	0601-001490	LED;INVERTER,BLUE,3MM,465-477NM	
LED8	0601-001490	LED;INVERTER,BLUE,3MM,465-477NM	
LED9	0601-001490	LED;INVERTER,BLUE,3MM,465-477NM	
MIC1	3722-000363	JACK-PHONE;9P,AU,BLK,ANGLE	
MIC2	3722-000363	JACK-PHONE;9P,AU,BLK,ANGLE	
Q1	0501-000422	TR-SMALL SIGNAL;KTA1273,PNP,-30V,-30V,-2	
Q10	0501-002409	TR-SMALL SIGNAL;KTC945B,NPN,625MW,TO-92,	
Q13	0504-000118	TR-DIGITAL;KSR1003,NPN,300MW,22K/22K,TO-	
Q14	0504-000118	TR-DIGITAL;KSR1003,NPN,300MW,22K/22K,TO-	
Q17	0501-000422	TR-SMALL SIGNAL;KTA1273,PNP,-30V,-30V,-2	
Q18	0501-000422	TR-SMALL SIGNAL;KTA1273,PNP,-30V,-30V,-2	
Q2	0501-000010	TR-SMALL SIGNAL;KSC1008,NPN,800mW,TO-92,	
Q21	0501-000422	TR-SMALL SIGNAL;KTA1273,PNP,-30V,-30V,-2	
Q22	0501-000010	TR-SMALL SIGNAL;KSC1008,NPN,800mW,TO-92,	
Q23	0501-000010	TR-SMALL SIGNAL;KSC1008,NPN,800mW,TO-92,	
Q24	0501-000010	TR-SMALL SIGNAL;KSC1008,NPN,800mW,TO-92,	
Q25	0504-000118	TR-DIGITAL;KSR1003,NPN,300MW,22K/22K,TO-	
Q26	0504-000118	TR-DIGITAL;KSR1003,NPN,300MW,22K/22K,TO-	
Q27	0504-000118	TR-DIGITAL;KSR1003,NPN,300MW,22K/22K,TO-	
Q28	0504-000118	TR-DIGITAL;KSR1003,NPN,300MW,22K/22K,TO-	
Q29	0504-000118	TR-DIGITAL;KSR1003,NPN,300MW,22K/22K,TO-	
Q3	0501-000010	TR-SMALL SIGNAL;KSC1008,NPN,800mW,TO-92,	
Q30	0504-000118	TR-DIGITAL;KSR1003,NPN,300MW,22K/22K,TO-	
Q31	0501-000303	TR-SMALL SIGNAL;KSA733,PNP,250mW,TO-92,T	
Q4	0501-000010	TR-SMALL SIGNAL;KSC1008,NPN,800mW,TO-92,	
Q5	0501-000010	TR-SMALL SIGNAL;KSC1008,NPN,800mW,TO-92,	
Q6	0504-000145	TR-DIGITAL;KSR2003,PNP,300MW,22K/22K,TO-	
Q7	0504-000145	TR-DIGITAL;KSR2003,PNP,300MW,22K/22K,TO-	
Q9	0501-000369	TR-SMALL SIGNAL;KSC2331-Y,NPN,1000mW,TO-	
R1	2001-000890	R-CARBON;6.8KOHM,5%,1/8W,AA,TP,1.8X3.2MM	
R10	2001-001077	R-CARBON(S);150OHM,5%,1/2W,AA,TP,2.4X6.4	
R100	2001-000405	R-CARBON;180OHM,5%,1/8W,AA,TP,1.8X3.2MM	
R101	2001-000405	R-CARBON;180OHM,5%,1/8W,AA,TP,1.8X3.2MM	
R102	2001-000405	R-CARBON;180OHM,5%,1/8W,AA,TP,1.8X3.2MM	
R103	2001-000554	R-CARBON;270OHM,5%,1/8W,AA,TP,1.8X3.2MM	
R104	2001-000290	R-CARBON;10KOHM,5%,1/8W,AA,TP,1.8X3.2MM	
R105	2001-000995	R-CARBON;820OHM,5%,1/8W,AA,TP,1.8X3.2MM	
R106	2001-000995	R-CARBON;820OHM,5%,1/8W,AA,TP,1.8X3.2MM	
R107	2001-000995	R-CARBON;820OHM,5%,1/8W,AA,TP,1.8X3.2MM	
R108	2001-000429	R-CARBON;1KOHM,5%,1/8W,AA,TP,1.8X3.2MM	
R109	2001-000429	R-CARBON;1KOHM,5%,1/8W,AA,TP,1.8X3.2MM	
R11	2001-001096	R-CARBON(S);2.2OHM,5%,1/2W,AA,TP,2.4X6.4	
R110	2001-000429	R-CARBON;1KOHM,5%,1/8W,AA,TP,1.8X3.2MM	
R111	2001-000221	R-CARBON;1.2KOHM,5%,1/8W,AA,TP,1.8X3.2MM	
R112	2001-000221	R-CARBON;1.2KOHM,5%,1/8W,AA,TP,1.8X3.2MM	
R113	2001-000221	R-CARBON;1.2KOHM,5%,1/8W,AA,TP,1.8X3.2MM	
R114	2001-000241	R-CARBON;1.5KOHM,5%,1/8W,AA,TP,1.8X3.2MM	
R115	2001-000241	R-CARBON;1.5KOHM,5%,1/8W,AA,TP,1.8X3.2MM	
R117	2001-000258	R-CARBON;1.8KOHM,5%,1/8W,AA,TP,1.8X3.2M	
R118	2001-000258	R-CARBON;1.8KOHM,5%,1/8W,AA,TP,1.8X3.2M	
R12	2001-000008	R-CARBON;15KOHM,5%,1/8W,AA,TP,1.8X3.2MM	
R120	2001-000449	R-CARBON;2.2KOHM,5%,1/8W,AA,TP,1.8X3.2MM	
R121	2001-000449	R-CARBON;2.2KOHM,5%,1/8W,AA,TP,1.8X3.2MM	
R124	2001-000591	R-CARBON;3.3KOHM,5%,1/8W,AA,TP,1.8X3.2MM	
R13	2001-000734	R-CARBON;4.7KOHM,5%,1/8W,AA,TP,1.8X3.2MM	
R135	2001-000290	R-CARBON;10KOHM,5%,1/8W,AA,TP,1.8X3.2MM	
R138	2001-000290	R-CARBON;10KOHM,5%,1/8W,AA,TP,1.8X3.2MM	
R14	2001-000734	R-CARBON;4.7KOHM,5%,1/8W,AA,TP,1.8X3.2MM	
R15	2001-000591	R-CARBON;3.3KOHM,5%,1/8W,AA,TP,1.8X3.2MM	
R16	2001-000786	R-CARBON;47KOHM,5%,1/8W,AA,TP,1.8X3.2MM	
R17	2001-000411	R-CARBON;18KOHM,5%,1/8W,AA,TP,1.8X3.2MM	
R174	2001-000449	R-CARBON;2.2KOHM,5%,1/8W,AA,TP,1.8X3.2MM	
R175	2001-000449	R-CARBON;2.2KOHM,5%,1/8W,AA,TP,1.8X3.2MM	
R178	2001-000660	R-CARBON;33KOHM,5%,1/8W,AA,TP,1.8X3.2MM	
R179	2001-000660	R-CARBON;33KOHM,5%,1/8W,AA,TP,1.8X3.2MM	
R18	2001-001124	R-CARBON(S);3.9OHM,5%,1/2W,AA,TP,2.4X6.4	
R180	2001-000734	R-CARBON;4.7KOHM,5%,1/8W,AA,TP,1.8X3.2MM	
R19	2001-000734	R-CARBON;4.7KOHM,5%,1/8W,AA,TP,1.8X3.2MM	
R2	2001-000890	R-CARBON;6.8KOHM,5%,1/8W,AA,TP,1.8X3.2MM	
R20	2001-000734	R-CARBON;4.7KOHM,5%,1/8W,AA,TP,1.8X3.2MM	

Location no.	Code no.	Description & Specification	Remarks
R21	2001-000734	R-CARBON;4.7KOHM,5%,1/8W,AA,TP,1.8X3.2MM	
R22	2001-000734	R-CARBON;4.7KOHM,5%,1/8W,AA,TP,1.8X3.2MM	
R23	2001-000449	R-CARBON;2.2KOHM,5%,1/8W,AA,TP,1.8X3.2MM	
R24	2001-000449	R-CARBON;2.2KOHM,5%,1/8W,AA,TP,1.8X3.2MM	
R25	2001-000258	R-CARBON;1.8KOHM,5%,1/8W,AA,TP,1.8X3.2M	
R26	2001-000258	R-CARBON;1.8KOHM,5%,1/8W,AA,TP,1.8X3.2M	
R27	2001-000522	R-CARBON;22KOHM,5%,1/8W,AA,TP,1.8X3.2MM	
R28	2001-000977	R-CARBON;8.2KOHM,5%,1/8W,AA,TP,1.8X3.2MM	
R29	2001-000977	R-CARBON;8.2KOHM,5%,1/8W,AA,TP,1.8X3.2MM	
R3	2001-000890	R-CARBON;6.8KOHM,5%,1/8W,AA,TP,1.8X3.2MM	
R30	2001-000008	R-CARBON;15KOHM,5%,1/8W,AA,TP,1.8X3.2MM	
R31	2001-000008	R-CARBON;15KOHM,5%,1/8W,AA,TP,1.8X3.2MM	
R32	2001-000302	R-CARBON;10OHM,5%,1/8W,AA,TP,1.8X3.2MM	
R33	2001-000302	R-CARBON;10OHM,5%,1/8W,AA,TP,1.8X3.2MM	
R34	2001-000435	R-CARBON;1MOHM,5%,1/8W,AA,TP,1.8X3.2MM	
R35	2001-000027	R-CARBON;100OHM,5%,1/4W,AA,TP,2.4X6.4MM	
R36	2001-000290	R-CARBON;10KOHM,5%,1/8W,AA,TP,1.8X3.2MM	
R37	2001-000290	R-CARBON;10KOHM,5%,1/8W,AA,TP,1.8X3.2MM	
R38	2001-000449	R-CARBON;2.2KOHM,5%,1/8W,AA,TP,1.8X3.2MM	
R39	2001-000449	R-CARBON;2.2KOHM,5%,1/8W,AA,TP,1.8X3.2MM	
R4	2001-000890	R-CARBON;6.8KOHM,5%,1/8W,AA,TP,1.8X3.2MM	
R40	2001-000003	R-CARBON;330ohm,5%,1/8W,AA,TP,1.8x3.2mm	
R41	2001-000290	R-CARBON;10KOHM,5%,1/8W,AA,TP,1.8X3.2MM	
R42	2001-000429	R-CARBON;1KOHM,5%,1/8W,AA,TP,1.8X3.2MM	
R43	2001-000281	R-CARBON;100OHM,5%,1/8W,AA,TP,1.8X3.2MM	
R44	2001-000435	R-CARBON;1MOHM,5%,1/8W,AA,TP,1.8X3.2MM	
R45	2001-000290	R-CARBON;10KOHM,5%,1/8W,AA,TP,1.8X3.2MM	
R46	2001-000290	R-CARBON;10KOHM,5%,1/8W,AA,TP,1.8X3.2MM	
R47	2001-000290	R-CARBON;10KOHM,5%,1/8W,AA,TP,1.8X3.2MM	
R48	2001-000290	R-CARBON;10KOHM,5%,1/8W,AA,TP,1.8X3.2MM	
R49	2001-000281	R-CARBON;100OHM,5%,1/8W,AA,TP,1.8X3.2MM	
R5	2001-000924	R-CARBON;680OHM,5%,1/8W,AA,TP,1.8X3.2MM	
R50	2001-000281	R-CARBON;100OHM,5%,1/8W,AA,TP,1.8X3.2MM	
R51	2001-000281	R-CARBON;100OHM,5%,1/8W,AA,TP,1.8X3.2MM	
R56	2001-000281	R-CARBON;100OHM,5%,1/8W,AA,TP,1.8X3.2MM	
R57	2001-000522	R-CARBON;22KOHM,5%,1/8W,AA,TP,1.8X3.2MM	
R58	2001-000522	R-CARBON;22KOHM,5%,1/8W,AA,TP,1.8X3.2MM	
R59	2001-000034	R-CARBON;220OHM,5%,1/4W,AA,TP,2.4X6.4MM	
R6	2001-000924	R-CARBON;680OHM,5%,1/8W,AA,TP,1.8X3.2MM	
R60	2001-000008	R-CARBON;15KOHM,5%,1/8W,AA,TP,1.8X3.2MM	
R61	2001-000660	R-CARBON;33KOHM,5%,1/8W,AA,TP,1.8X3.2MM	
R62	2001-000429	R-CARBON;1KOHM,5%,1/8W,AA,TP,1.8X3.2MM	
R64	2001-000008	R-CARBON;15KOHM,5%,1/8W,AA,TP,1.8X3.2MM	
R65	2001-000660	R-CARBON;33KOHM,5%,1/8W,AA,TP,1.8X3.2MM	
R66	2001-001178	R-CARBON(S);680OHM,5%,1/2W,AA,TP,2.4X6.4	
R67	2001-001178	R-CARBON(S);680OHM,5%,1/2W,AA,TP,2.4X6.4	
R7	2001-000522	R-CARBON;22KOHM,5%,1/8W,AA,TP,1.8X3.2MM	
R75	2001-000281	R-CARBON;100OHM,5%,1/8W,AA,TP,1.8X3.2MM	
R76	2001-000281	R-CARBON;100OHM,5%,1/8W,AA,TP,1.8X3.2MM	
R77	2001-000281	R-CARBON;100OHM,5%,1/8W,AA,TP,1.8X3.2MM	
R78	2001-000290	R-CARBON;10KOHM,5%,1/8W,AA,TP,1.8X3.2MM	
R79	2001-000837	R-CARBON;51KOHM,5%,1/8W,AA,TP,1.8X3.2MM	
R8	2001-000522	R-CARBON;22KOHM,5%,1/8W,AA,TP,1.8X3.2MM	
R80	2001-000290	R-CARBON;10KOHM,5%,1/8W,AA,TP,1.8X3.2MM	
R800L	2001-000429	R-CARBON;1KOHM,5%,1/8W,AA,TP,1.8X3.2MM	
R800R	2001-000429	R-CARBON;1KOHM,5%,1/8W,AA,TP,1.8X3.2MM	
R81	2001-000645	R-CARBON;330KOHM,5%,1/8W,AA,TP,1.8X3.2MM	
R82	2001-001004	R-CARBON;82OHM,5%,1/4W,AA,TP,2.4X6.4MM	
R83	2001-000047	R-CARBON;2.2KOHM,5%,1/4W,AA,TP,2.4X6.4M	
R84	2001-001163	R-CARBON(S);560OHM,5%,1/2W,AA,TP,2.4X6.4	
R85	2001-000645	R-CARBON;330KOHM,5%,1/8W,AA,TP,1.8X3.2MM	
R86	2001-000290	R-CARBON;10KOHM,5%,1/8W,AA,TP,1.8X3.2MM	
R87	2001-000290	R-CARBON;10KOHM,5%,1/8W,AA,TP,1.8X3.2MM	
R88	2001-000290	R-CARBON;10KOHM,5%,1/8W,AA,TP,1.8X3.2MM	
R89	2001-000290	R-CARBON;10KOHM,5%,1/8W,AA,TP,1.8X3.2MM	
R9	2001-000290	R-CARBON;10KOHM,5%,1/8W,AA,TP,1.8X3.2MM	
R90	2001-000290	R-CARBON;10KOHM,5%,1/8W,AA,TP,1.8X3.2MM	
R91	2001-000290	R-CARBON;10KOHM,5%,1/8W,AA,TP,1.8X3.2MM	
R92	2001-000290	R-CARBON;10KOHM,5%,1/8W,AA,TP,1.8X3.2MM	
R93	2001-000290	R-CARBON;10KOHM,5%,1/8W,AA,TP,1.8X3.2MM	
R94	2001-000290	R-CARBON;10KOHM,5%,1/8W,AA,TP,1.8X3.2MM	
R95	2001-000221	R-CARBON;1.2KOHM,5%,1/8W,AA,TP,1.8X3.2MM	
R97	2001-001138	R-CARBON(S);390OHM,5%,1/2W,AA,TP,2.4X6.4	
R99	2001-000405	R-CARBON;180OHM,5%,1/8W,AA,TP,1.8X3.2MM	
USW1	3404-000165	SWITCH-TACT;12V,50mA,160gf,6x6mm,SPST	
USW10	3404-000165	SWITCH-TACT;12V,50mA,160gf,6x6mm,SPST	
USW11	3404-000165	SWITCH-TACT;12V,50mA,160gf,6x6mm,SPST	

Location no.	Code no.	Description & Specification	Remarks
USW12	3404-000165	SWITCH-TACT;12V,50mA,160gf,6x6mm,SPST	
USW13	3404-000165	SWITCH-TACT;12V,50mA,160gf,6x6mm,SPST	
USW14	3404-000165	SWITCH-TACT;12V,50mA,160gf,6x6mm,SPST	
USW15	3404-000165	SWITCH-TACT;12V,50mA,160gf,6x6mm,SPST	
USW16	3404-000165	SWITCH-TACT;12V,50mA,160gf,6x6mm,SPST	
USW17	3404-000165	SWITCH-TACT;12V,50mA,160gf,6x6mm,SPST	
USW18	3404-000165	SWITCH-TACT;12V,50mA,160gf,6x6mm,SPST	
USW19	3404-000165	SWITCH-TACT;12V,50mA,160gf,6x6mm,SPST	
USW2	3404-000165	SWITCH-TACT;12V,50mA,160gf,6x6mm,SPST	
USW3	3404-000165	SWITCH-TACT;12V,50mA,160gf,6x6mm,SPST	
USW4	3404-000165	SWITCH-TACT;12V,50mA,160gf,6x6mm,SPST	
USW5	3404-000165	SWITCH-TACT;12V,50mA,160gf,6x6mm,SPST	
USW7	3404-000165	SWITCH-TACT;12V,50mA,160gf,6x6mm,SPST	
USW8	3404-000165	SWITCH-TACT;12V,50mA,160gf,6x6mm,SPST	
USW9	3404-000165	SWITCH-TACT;12V,50mA,160gf,6x6mm,SPST	
VR1	3406-001101	SWITCH-ROTARY;10Kohm,20%,1/20W,SLIDE,BK	
ZD3	0403-000355	DIODE-ZENER;UZ5.1BSB,5-5.2V,500MW,DO-35,	
ZD4	0403-000355	DIODE-ZENER;UZ5.1BSB,5-5.2V,500MW,DO-35,	

**AH59-01769A DECK-MECHA DVD;VSH-M33D-0828,-,MAGNET,31**  
**AH59-01778V REMOCON-ASSY;MAX-DX75/NOEUR,SAMSUNG,237\***  
**AH97-02161A ASSY DECK CASSETTE-DECK,-,CASSET DECK,MA**  
**AH39-00258J CBF-POWER CORD;Z-88,-,EP2,125V,10A,1830M**  
**AH44-00154B SMPS;MAX-DX75/DX79/KX75/DX76,-,SMPS**

## MAX-KX75

AH39-00257F	"CBF-POWER CORD;MAX980,-,CP2,250V,2.5A,18"
AH59-01198E	"MICROPHONE;RUS,-,6.3PI,-,-,-,-,-,SILVE"
AH59-01778Y	"REMOCON-ASSY;MAX-KX75/EUR,SAMSUNG,237*48"
AH59-01779C	"SPEAKER SYSTEM;PS-KX75,-,-,-,-,-,XER,2"
AH69-01958D	"MASTER CARTON;MAX-KX75,OTHER,-,W626,L421"
AH44-00154C	"SMPS;MAX-DX75/DX79/KX75/DX76,-,SMPS"
0402-000012	"DIODE-RECTIFIER;UF4007,1KV,1A,DO-41,TP"
0402-000137	"DIODE-RECTIFIER;1N4007,1KV,1A,DO-41,TP"
0501-000362	"TR-SMALL SIGNAL;KSC2328A-Y,NPN,1000mW,TO"
0501-000422	"TR-SMALL SIGNAL;KTA1273,PNP,-30V,-30V,-2"
0501-000630	"TR-SMALL SIGNAL;KTA1268,PNP,300MW,TO-92"
1203-003365	"IC-PWM CONTROLLER;FSDM0365RNC,DIP,8P,9.6"
1203-004573	"IC-VOL. REFERENCE;FAN431A,TO-92,3P,4.58X"
2001-000003	"R-CARBON;330ohm,5%,1/8W,AA,TP,1.8X3.2mm"
2001-000084	"R-CARBON;100Kohm,5%,1/4W,AA,TP,2.4x6.4mm"
2001-000302	"R-CARBON;10OHM,5%,1/8W,AA,TP,1.8X3.2MM"
2001-000319	"R-CARBON;120KOHM,5%,1/8W,AA,TP,1.8X3.2MM"
2001-000440	"R-CARBON;1OHM,5%,1/8W,AA,TP,1.8X3.2MM"
2001-000449	"R-CARBON;2.2KOHM,5%,1/8W,AA,TP,1.8X3.2MM"
2001-000472	"R-CARBON;2.7KOHM,5%,1/8W,AA,TP,1.8X3.2MM"
2001-000508	"R-CARBON;220KOHM,5%,1/8W,AA,TP,1.8X3.2M"
2001-000554	"R-CARBON;270OHM,5%,1/8W,AA,TP,1.8X3.2MM"
2001-000660	"R-CARBON;33KOHM,5%,1/8W,AA,TP,1.8X3.2MM"
2001-000666	"R-CARBON;330OHM,5%,1/8W,AA,TP,1.8X3.2MM"
2001-000734	"R-CARBON;4.7KOHM,5%,1/8W,AA,TP,1.8X3.2MM"
2001-000780	"R-CARBON;470OHM,5%,1/8W,AA,TP,1.8X3.2MM"
2001-000786	"R-CARBON;47KOHM,5%,1/8W,AA,TP,1.8X3.2MM"
2001-000857	"R-CARBON;560OHM,5%,1/8W,AA,TP,1.8X3.2MM"
2001-000869	"R-CARBON;56OHM,5%,1/8W,AA,TP,1.8X3.2MM"
2001-000924	"R-CARBON;680OHM,5%,1/8W,AA,TP,1.8X3.2MM"
2001-000947	"R-CARBON;7.5KOHM,5%,1/8W,AA,TP,1.8X3.2M"
2003-000738	"R-METAL OXIDE(S);56Kohm,5%,2W,AA,TP,4x12"
2201-000020	"C-CERAMIC,DISC;10NF,10%,1KV,Y5P,BK,18X5M"
2201-000021	"C-CERAMIC,DISC;100NF,+80-20%,50V,Y5V,TP,"
2201-000286	"C-CERAMIC,DISC;1nF,10%,1000V,Y5P,-,8x5mm"
2401-000471	"C-AL;10uF,20%,50V,BP,TP,5x11,5mm"
2401-000649	"C-AL;2.2uF,20%,50V,BP,TP,5x11,5"
2401-001479	"C-AL;470uF,20%,10V,GP,TP,6.3*11mm,5"
2401-002300	"C-AL;47##F,20%,50V,GP,TP,6.3x11,5mm"
2401-003036	"C-AL;100uF,20%,16V,GP,TP,5X11mm,5mm"
AH81-02503A	"FUSE;382type,6.3A,250V,-,-,-,-,-"
AH81-02505A	"DIODE-ZENER;1N5239B,0.5W,9.1V,DO-35 Glas"
AH81-02506A	"DIODE-ZENER;1N5231B,0.5W,5.1V,DO-35 Glas"
AH81-02520A	"DIODE-FAST RECOVERY;1N4937,600V,1A,DO-41"
AH81-02521A	"DIODE-SWITCHING;1N4148,500mW,DO-35,-,-,-"
AH81-02522A	"DIODE-ZENER;1N4758A,56V,4.5mA,DO-41,-,-,-"
AH81-02524A	"C-FILM MPEF;0.1uF,100V,5%,TP,-,-,-"
AH81-02525A	INDUCTOR-AXIAL-BEAD CORE;BFS3550AOL(AXIA
AH81-02526A	"C-CERAMIC DISK;100pF,1KV,10%,,-,-,-,-"
AH81-02532A	"INDUCTOR-RADIAL-CHOKE COIL;15uH,10%,,-,-,-"
AH81-02544A	"PHOTO COUPLER;LTV817B,IF,50mA,Vceo 35V,V"
AH81-02545A	"INDUCTOR-RADIAL-CHOKE COIL;RADIAL,2.9uH,"
AH81-02551A	"IC-REGULATOR;KA78R12,TO-220F-4L,Vo = 12V"
AH81-02553A	"THERMISTOR;3D15,-,-,-,-,-,-,-,-,-"
AH81-02558A	"CONNECTOR;5096-02C,7.92mm,-,-,-,-,-,-,-"
AH81-02565A	"C-FILM MPEF-MPP FILM;0.1uF,275VAC-PCX2-3"
AH81-02575A	"SCREW-PH;M3*8 ASSEMBLY,-,-,-,-,-,-,-,-,-"
AH81-02592A	"DIODE-SUPER FAST RECTIFIERS;SFF1606G,400"
AH81-02605A	"C-FILM MPEF-MYLAR;0.047uF,100V,5%,TP,-,-"
AH81-02614A	"RESISTOR-CARBON FILM;1/8W,1.2K ohm,1%,TP"
AH81-02617A	"RESISTOR-SURGE;1/2W,1.5M ohm,5%,SURGE RE"

Location no.	Code no.	Description & Specification	Remarks
AH81-02628A	"DIODE-FAST RECOVERY RECTIFIERS;FR104,400"		
AH81-02633A	"DIODE-SCHOTTKEY BARRIER RECTIFI;SR506,60V"		
AH81-02635A	"DIODE-ZENER;1N5242B,500mW,12V,DO-35 Glas"		
AH81-02637A	"DIODE-ZENER;DZ4.7BSB,4.77V,500mW,DO-34 G"		
AH81-02639A	"DIODE-BRIDGE;GBU605G,600V,6A,GBU,-,-,-,-"		
AH81-02642A	"C-FILM MPEF-MYLAR;0.0047uF,100V,5%,TP,-,-"		
AH81-02643A	"C-FILM MPEF-MYLAR;0.0028uF,100V,5%,TP,-,-"		
AH81-02647A	"C-CERAMIC DISK;470pF,400VAC-Y1,20%,,-,-,-"		
AH81-02649A	"C-CERAMIC DISK;1500pF,400VAC-Y1,20%,,-,-,-"		
AH81-02651A	"C-AL;680uF,6.3V,12.5*25mm,-40 to +"		
AH81-02654A	"C-AL;100uF,10V,10*12.5mm,-40 to +8"		
AH81-02660A	"C-AL;100uF,50V,8*12mm,-40 to +85C,-"		
AH81-02663A	"C-AL;100uF,25V,10*20mm,-40 to +105"		
AH81-02666A	"C-AL;47uF,50V,6.3*11mm,-40 to +105C"		
AH81-02667A	"C-AL;2200uF,50V,16*35mm,-40 to +105"		
AH81-02670A	"C-AL-LOW IMPEDANCE TYPE;3300uF,10V,12.5"		
AH81-02673A	"CONNECTOR;SW0500-12,2mm,-,-,-,-,-,-,-"		
AH81-02678A	"CONNECTOR;YMW025-09R,2.5mm,-,-,-,-,-,-,-"		
AH81-02698A	"WIRE-JUMPER;TIN 0.6(17.5mm),,-,-,-,-,-,-"		
AH81-02703A	"WIRE-JUMPER;TIN 0.6(10.0mm),,-,-,-,-,-,-"		
AH81-02710A	"WIRE-JUMPER;TIN 0.6(15.0mm),,-,-,-,-,-,-"		
AH81-02712A	"WIRE-JUMPER;TIN 0.6(17.5mm),,-,-,-,-,-,-"		
AH81-02716A	"WIRE-JUMPER;TIN 0.6(20mm),,-,-,-,-,-,-"		
AH81-02717A	"WIRE-JUMPER;TIN 0.6(12.5mm),,-,-,-,-,-,-"		
AH81-02721A	"PCB;197*135*1.6(CEM-1),,-,-,-,-,-,-,-"		
AH81-02731A	"HEAT SINK;-,-,-,15*11*22(HOLE)*30,SILVER"		
AH81-02752A	"C-FILM MPEF-METAL FILM;0.01uF,AC630V,10%"		
AH81-02754A	"IC-REGULATOR;KA378R33,3A,3.3V,TO-220F-4L"		
AH81-02764A	"IC-REGULATOR;KA278R05,2A,5V,TO-220F-4L,-"		
AH81-02766A	"TRANSISTOR;KSP2222A,Vceo 40V,Pc 625mW,TO"		
AH81-02776A	"INDUCTOR-RADIAL-LINE FILTER;KE-13M2,-,-,-"		
AH81-02795A	"C-AL;330uF,16V,6.3*11mm,-40 to +85C"		
AH81-02798A	"DIODE-FAST RECOVERY RECTIFIERS;FR205,2A,"		
AH81-02815A	"C-AL;100uF,25V,6.3*11mm,-40 to +85C"		
AH81-02816A	"C-AL;1uF,50V,5*11mm,-40 to +85C,-,-"		
AH81-02838A	"RESISTOR-CARBON FILM;1/8W,18Kohm,1%,TP,-"		
AH81-02963A	"IC;KA5Q12656RT,-,-,-,-,-,-,-,-,-,-"		
AH81-02993A	"RESISTOR-CARBON FILM;1/4W 100 ohm,5%,TP,"		
AH81-02996A	"RESISTOR-CARBON FILM;1/4W 1K ohm,5%,TP,-"		
AH81-03156A	"RESISTOR-CARBON FILM;1/8W 3.6 ohm,5%,TP,"		
AH81-03160A	"RESISTOR-CARBON FILM;1/8W 5.6K ohm,5%,TP"		
AH81-03163A	"RESISTOR-CARBON FILM;1/8W 5.1 ohm,1%,TP,-"		
AH81-03165A	"RESISTOR-CARBON FILM;1/8W 140 ohm,1%,TP,"		
AH81-03170A	"RESISTOR-CARBON FILM;1/4W 2.5K ohm,5%,TP"		
AH81-03172A	"RESISTOR-METAL OXIDE FILM;1W 150 ohm (MO		
AH81-03177A	"RESISTOR-METAL OXIDE FILM;2W 120K ohm (M		
AH81-03178A	"RESISTOR-METAL OXIDE FILM;2W 200K ohm (M		
AH81-03180A	"RESISTOR-SURGE ARRESTER;Y08UZ-230B,-,-,-"		
AH81-03195A	"CAPACITOR-MYLAR;0.027uF(100V),(2A273J),"		
AH81-03197A	"CAPACITOR-METAL;ME1600V/152(17.5mm),,-,-"		
AH81-03206A	"C-AL;1000uF/16V,10*16mm,-40 to +105"		
AH81-03209A	"C-AL-LARGE;330uF/250V,25.4*30mm,-40 to +"		
AH81-03212A	"DIODE;SR306 (M-FORMING),,-,-,-,-,-,-,-"		
AH81-03221A	"TRANS;ORTP-616 T2(EER4242),,-,-,-,-,-,-"		
AH81-03222A	"TRANS;ORTP-629 T1(EER2828),,-,-,-,-,-,-"		
AH81-03231A	"VARISTOR;14D471,-,-,-,-,-,-,-,-,-,-"		
AH81-03242A	"HEAT SINK;-,-,-,52*17X27(HOLE)X35/SILVER"		
AH81-03246A	"HEAT SINK;-,-,-,35*20*18(HOLE)X35(H),,-,-"		
AH92-02701A	"ASSY PCB-MAIN;MM-KX75,MAIN PCB"		
1203-000294	"IC-POS.FIXED REG.;7808,TO-220,3P,-,PLAS"		
2401-000118	"C-AL;1000uF,20%,10V,GP,TP,10x12.5,5"		
2401-000118	"C-AL;1000uF,20%,10V,GP,TP,10x12.5,5"		
2401-001126	"C-AL;330uF,20%,25V,WT,TP,10x12.5,5"		
2401-004106	"C-AL;680uF,20%,50V,-,BK,12.5 x 35,5"		
2401-004106	"C-AL;680uF,20%,50V,-,BK,12.5 x 35,5"		
2801-001394	"CRYSTAL-UNIT;32.768KHz,20ppm,28-AA,12.5"		
2801-003863	"CRYSTAL-UNIT;48MHz,30ppm,28-AAA,18pF,80"		
2801-004354	"CRYSTAL-UNIT;12.288MHZ,30PPM,ATS-49/U,1P,"		
2802-001174	"RESONATOR-CERAMIC;10MHZ,0.5%,BK,8X3.5X3M"		
3708-000219	"CONNECTOR-FPC/FPC/PIC;21P,1.25MM,STRAIGH"		
3708-000411	"CONNECTOR-FPC/FPC/PIC;12P,1.25MM,STRAIGH"		
3708-000448	"CONNECTOR-FPC/FPC/PIC;6P,1.25MM,STRAIGH"		
3711-000471	"HEADER-BOARD TO CABLE;3WALL,4P,1R,2mm,ST"		
3711-000820	"HEADER-BOARD TO CABLE;BOX,2P,1R,2.5MM,ST"		
3711-003409	"HEADER-BOARD TO CABLE;BOX,3P,1R,2mm,STRA"		
3716-001270	"TERMINAL-BLOCK;WIRE TYPE,12P,4.6mm,40V,5"		
3722-002147	"JACK-PIN;3P,NI,RED/BLU/GRN,ANGLE,"		
3722-002283	"JACK-SCART;21P+3P,-,SN,BLK,-,-,-"		
3722-002576	"JACK-PIN;3P,NI,RED/WHT/YEL,ANGLE"		
6003-001375	"SCREW-TAPTITE;BH,-,-,B,M3,L8,2PC(WHT),SW"		
AH27-00064A	"COIL FILTER;MAX-DT99,10UH,45mOHH,2,13.8m"		
AH27-00064A	"COIL FILTER;MAX-DT99,10UH,45mOHH,2,13.8m"		
AH27-00064A	"COIL FILTER;MAX-DT99,10UH,45mOHH,2,13.8m"		
AH27-00064A	"COIL FILTER;MAX-DT99,10UH,45mOHH,2,13.8m"		
AH39-00123B	"CONNECT WIRE;mm-d8,-,-,1.5pin,150mm,whit"		
AH39-00870A	"WIRE HARNESS;HT-XQ100,9P,2.5mm,150mm,UL,"		
AH40-00128A	"TUNER;KST-MW002FV1-E50L3CIS,HT-Q40,FM"		
AH61-02131A	"HOLDER-IC;HX-D77,PBT,-,-,-,-,-,-,-,-"		
AH62-00062G	"HEAT SINK-TR;HT-DS400,AL EXTR,-,-,-,-,-,-"		
AH62-00163B	"HEAT SINK-AMP;MAX-DX75,AL,T42,W35,L100,-"		
AH65-30010A	"CLAMP-WIRE;-,-,-,-,-,-,-,-,-,-,-,-,-"		
0401-001090	"DIODE-SWITCHING;1SS355,80V,100MA,SOD-323"		













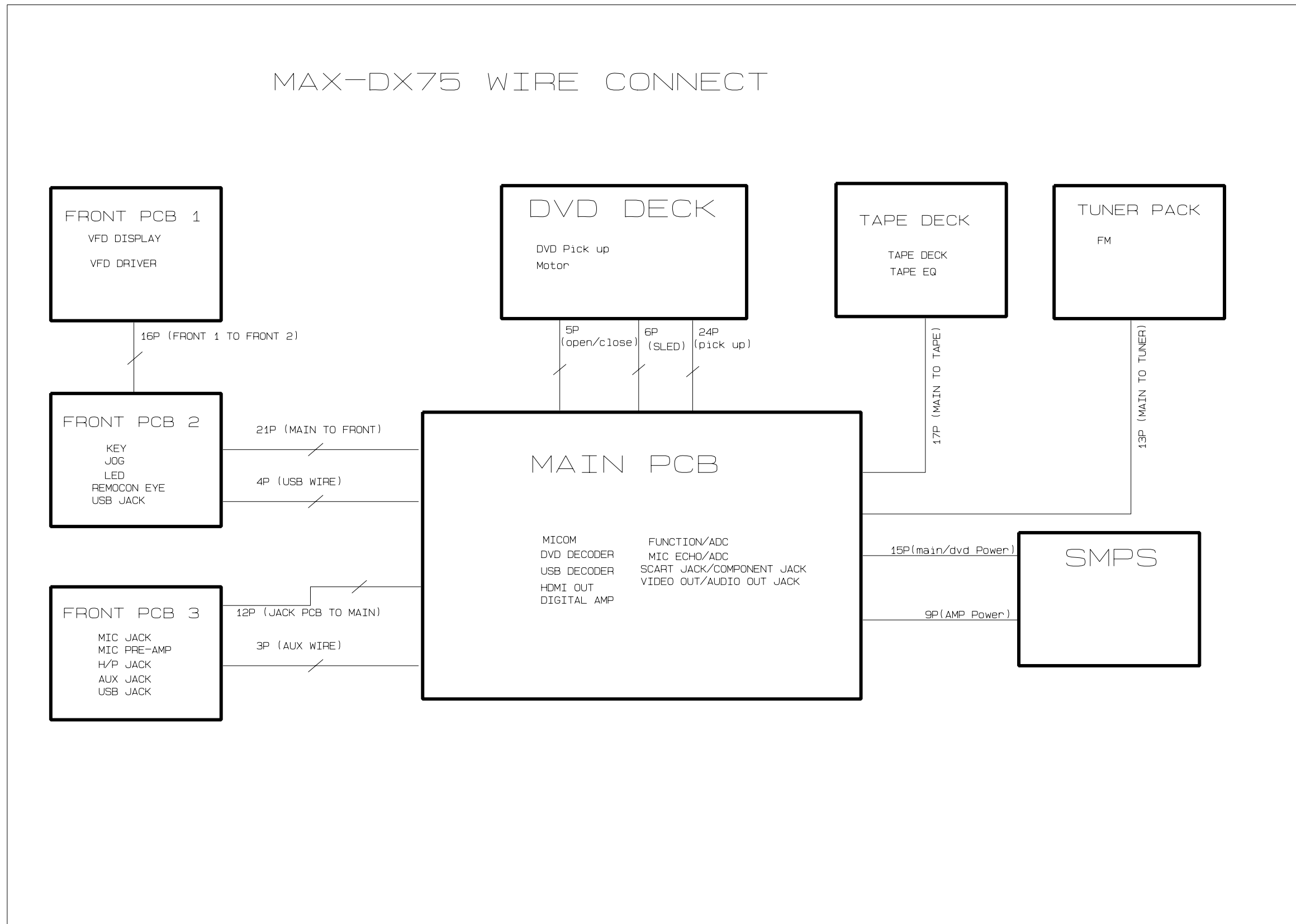




Location no.	Code no.	Description & Specification	Remarks
L3	2701-000111	"INDUCTOR-AXIAL;100UH,10%,2534"	
BD5	3301-000297	"BEAD-AXIAL;25ohm,3.6x1.2x5.7mm,-,TP,-,-"	
BD6	3301-000297	"BEAD-AXIAL;25ohm,3.6x1.2x5.7mm,-,TP,-,-"	
BD8	3301-000297	"BEAD-AXIAL;25ohm,3.6x1.2x5.7mm,-,TP,-,-"	
BD9	3301-000297	"BEAD-AXIAL;25ohm,3.6x1.2x5.7mm,-,TP,-,-"	
BD1	3301-000297	"BEAD-AXIAL;25ohm,3.6x1.2x5.7mm,-,TP,-,-"	
BD10	3301-000297	"BEAD-AXIAL;25ohm,3.6x1.2x5.7mm,-,TP,-,-"	
BD2	3301-000297	"BEAD-AXIAL;25ohm,3.6x1.2x5.7mm,-,TP,-,-"	
BD4	3301-000297	"BEAD-AXIAL;25ohm,3.6x1.2x5.7mm,-,TP,-,-"	
USW3	3404-000165	"SWITCH-TACT;12V,50mA,160gf,6x6mm,SPST"	
USW2	3404-000165	"SWITCH-TACT;12V,50mA,160gf,6x6mm,SPST"	
USW19	3404-000165	"SWITCH-TACT;12V,50mA,160gf,6x6mm,SPST"	
USW18	3404-000165	"SWITCH-TACT;12V,50mA,160gf,6x6mm,SPST"	
USW4	3404-000165	"SWITCH-TACT;12V,50mA,160gf,6x6mm,SPST"	
USW5	3404-000165	"SWITCH-TACT;12V,50mA,160gf,6x6mm,SPST"	
USW7	3404-000165	"SWITCH-TACT;12V,50mA,160gf,6x6mm,SPST"	
USW8	3404-000165	"SWITCH-TACT;12V,50mA,160gf,6x6mm,SPST"	
USW9	3404-000165	"SWITCH-TACT;12V,50mA,160gf,6x6mm,SPST"	
USW1	3404-000165	"SWITCH-TACT;12V,50mA,160gf,6x6mm,SPST"	
USW10	3404-000165	"SWITCH-TACT;12V,50mA,160gf,6x6mm,SPST"	
USW11	3404-000165	"SWITCH-TACT;12V,50mA,160gf,6x6mm,SPST"	
USW12	3404-000165	"SWITCH-TACT;12V,50mA,160gf,6x6mm,SPST"	
USW13	3404-000165	"SWITCH-TACT;12V,50mA,160gf,6x6mm,SPST"	
USW17	3404-000165	"SWITCH-TACT;12V,50mA,160gf,6x6mm,SPST"	
USW16	3404-000165	"SWITCH-TACT;12V,50mA,160gf,6x6mm,SPST"	
USW15	3404-000165	"SWITCH-TACT;12V,50mA,160gf,6x6mm,SPST"	
USW14	3404-000165	"SWITCH-TACT;12V,50mA,160gf,6x6mm,SPST"	
PCB	AH41-01038A	"PCB-FRONT;MAX-DX75,FR1,1,-,1.6MM,247MM*2"	
	<b>AH97-02081B</b>	<b>"ASSY-ACCESORY;MAX-DX75T/XAP,-"</b>	
	4301-000116	"BATTERY-ALKALINE;9V,-,17.5x26.5x48.5mm"	
	6801-001066	"CARD-REGISTRATION;RUSSIA,CIS(RUSSIA),RUS"	
	6801-001566	"CARD-WARRANTY;ALL MP3 MODEL,XFO,RUS,-,-,-"	
	6902-000385	"BAG PE;LDPE,T0.03,W250,L350,TRP,8,1PE"	
	AH39-40001V	"CABLE-AUDIO CABLE;-,-,1P-1P,3000mm,-,-,-"	
	AH42-00021A	"ANT FM T;T18011F-1.75 ohm,1800mm"	
	AH46-00038A	"DISC-WMA R/K 4000 SONGS;12cm,-,DVD,DVD-K"	
	AH68-01772B	"MANUAL-SONG BOOK REV06;MM-KT8,XFO,-,-,-"	
	AH68-01939A	"MANUAL USERS;MAX-KX75,XFO,ENG/RUS,-,MOJO"	
	AH68-50254B	"LABEL-SERIAL;ART PAPER,T0.1,L10,W45,-,-,-"	
	AH81-02286A	"A/S-EYEGLASS CLOTH;HT-Q100,-,-,-,30cm*30"	
	<b>AH97-02261G</b>	<b>"ASSY MACHINERY-DECK;XFA,MM-DX75"</b>	
	3809-001678	"CABLE-FLAT;30V,80,225mm,24P,.5mm,UL20696"	
	3809-001998	"CABLE-FLAT;30V,80,230mm,6P,1.00mm,UL2069"	
	<b>AH97-02317A</b>	<b>"ASSY DVD DECK-DVDP SLOT IN;DVDP TYPE,DVD"</b>	

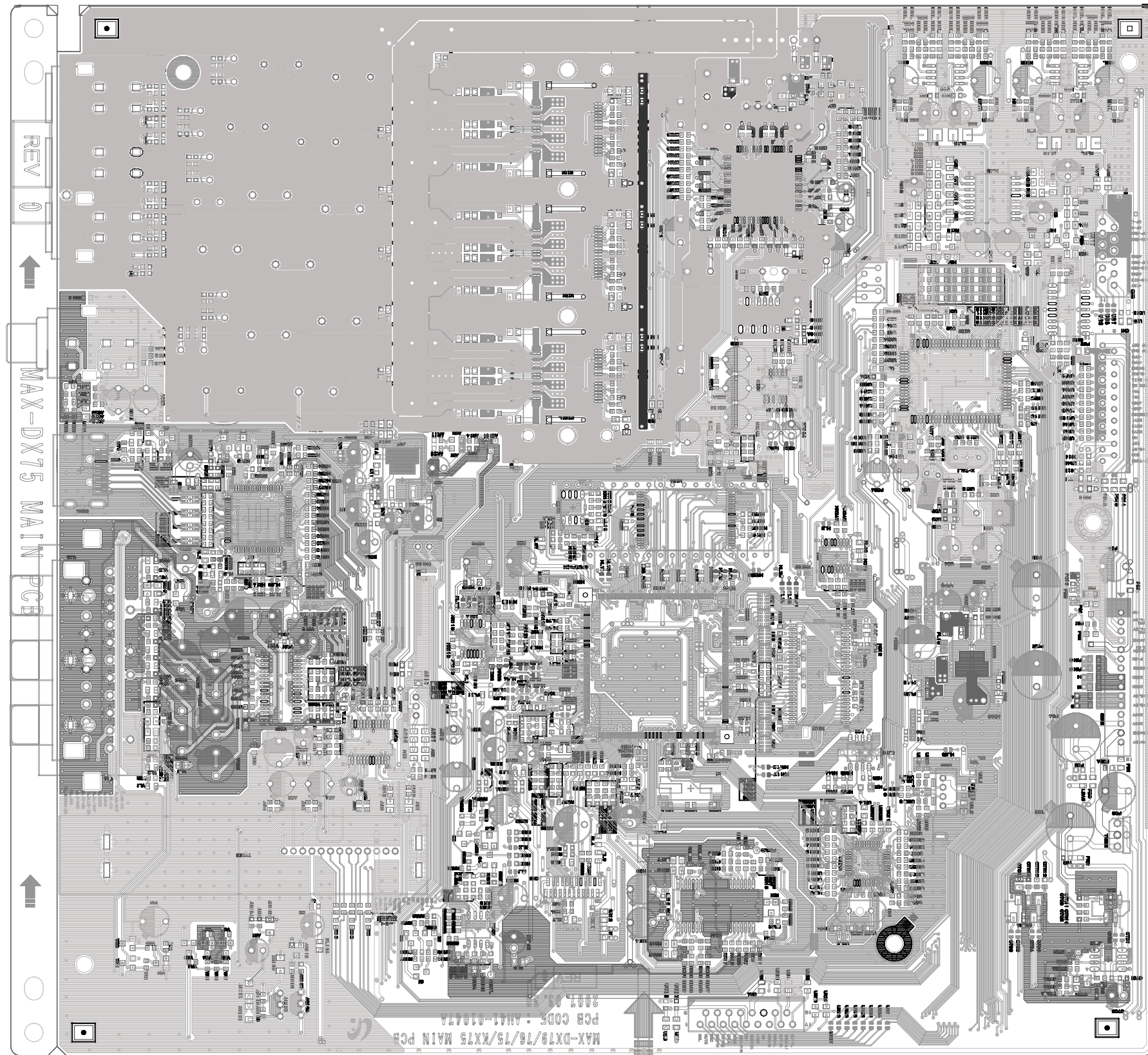
Location no.	Code no.	Description & Specification	Remarks
--------------	----------	-----------------------------	---------

## 6-1. Wiring Diagram



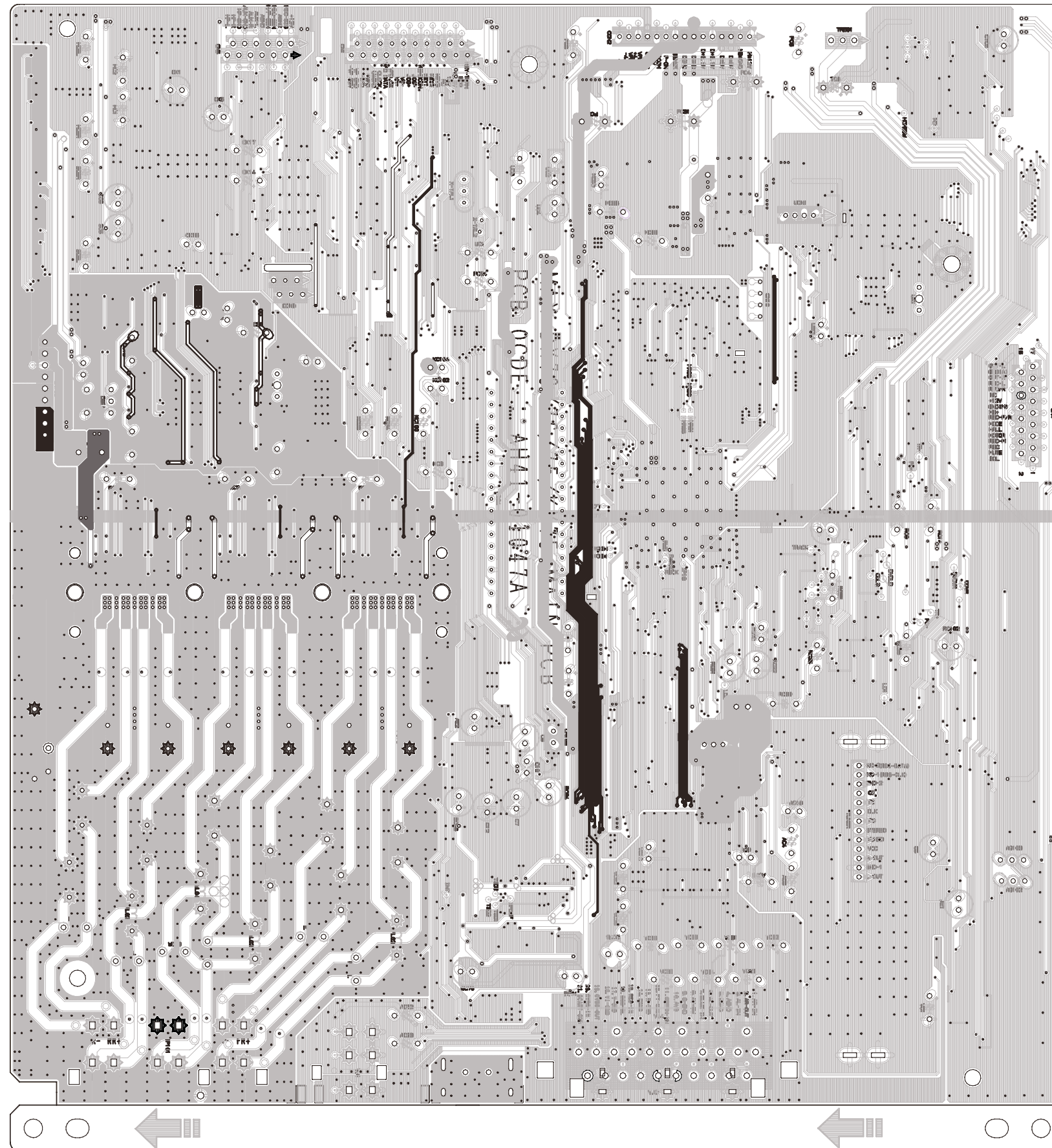
## 6-2. PCB Diagram

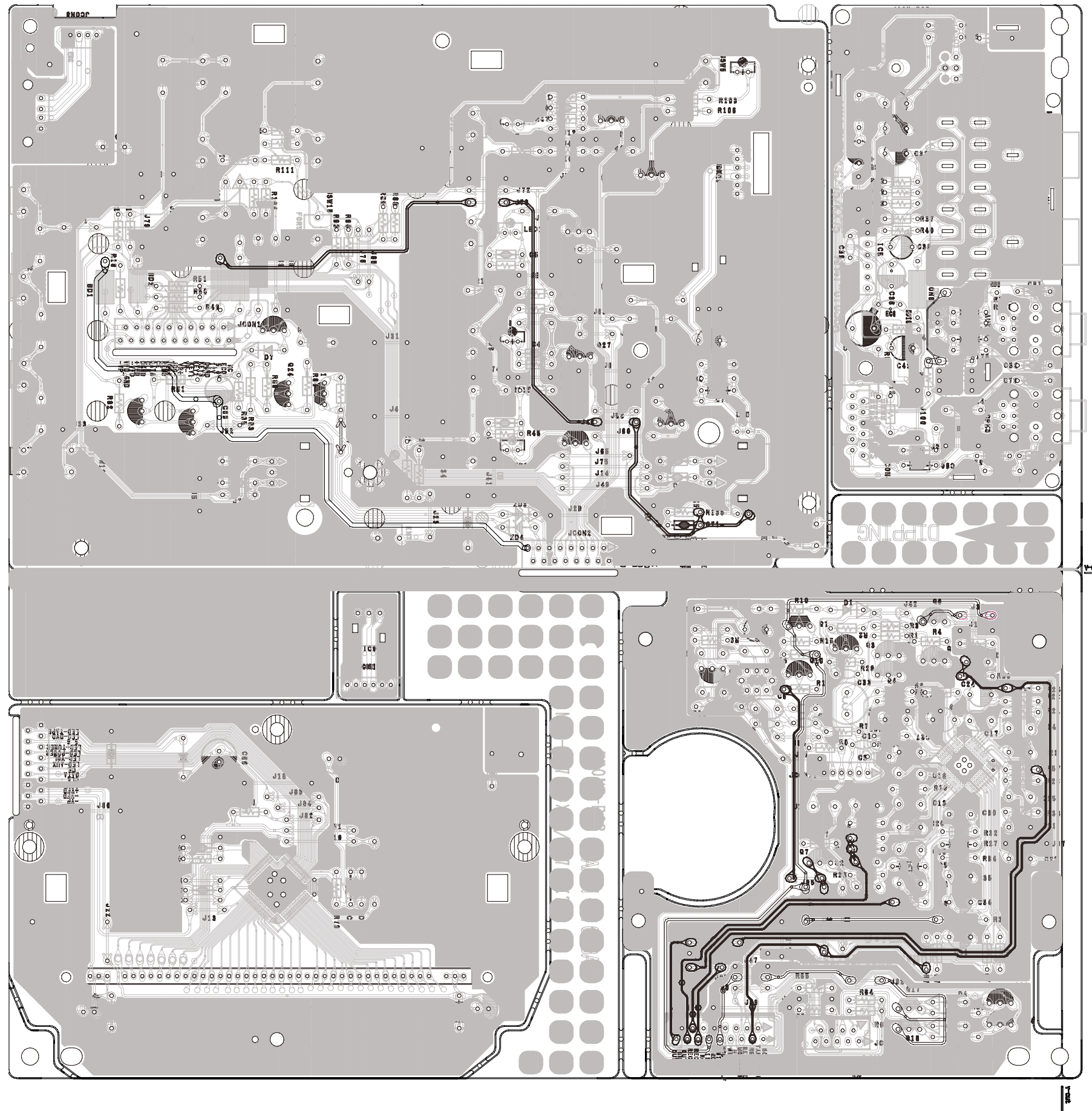
### 2-1. MAIN TOP



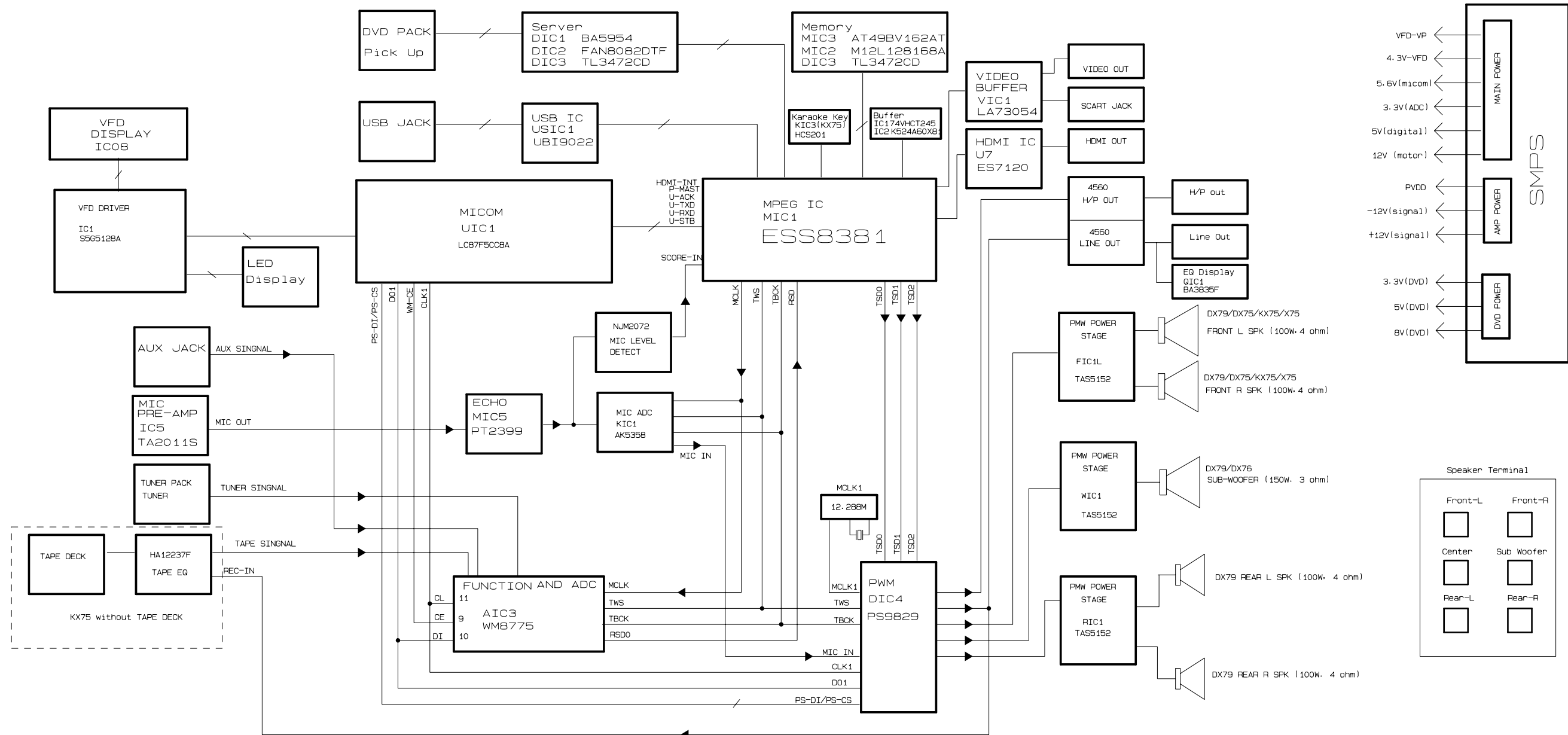


2- 2. MAIN BOTTOM





MAX-DX79/DX75/KX75/X75



2-1. MAIN

