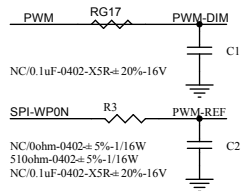
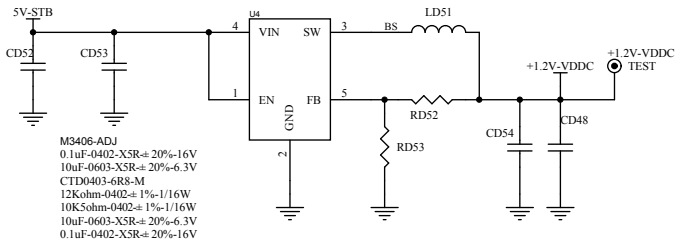
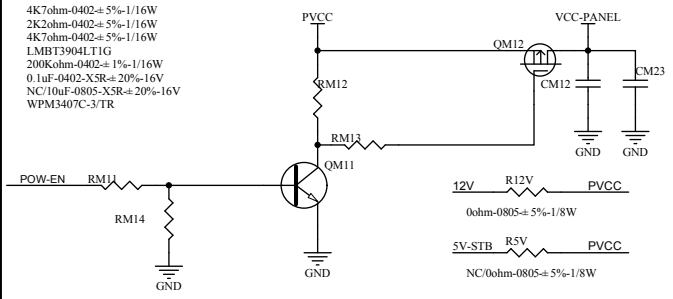
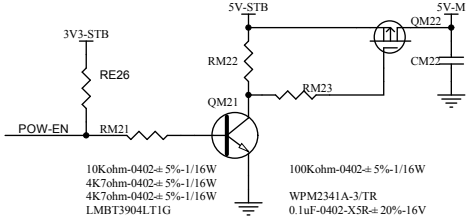
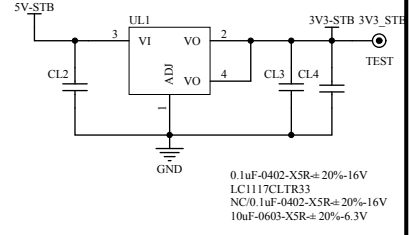
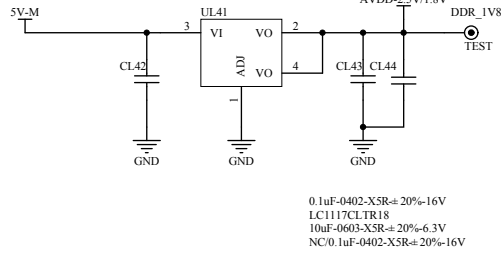
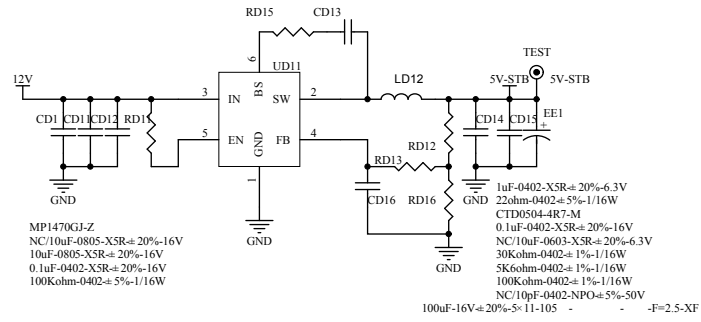
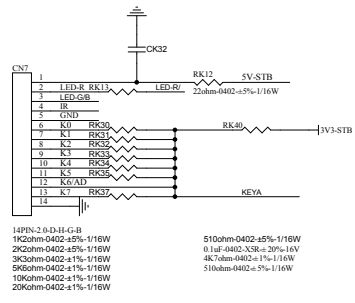


Model Name:	TP-VST99/P8418 D14056	VERSION:	V1.0
DRAWN:	WANGJIAN	DATE:	2014-04-23
CHKD:		DATE:	

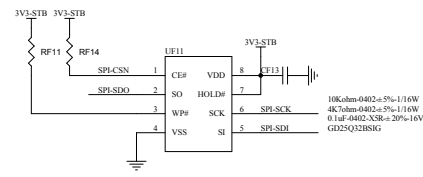




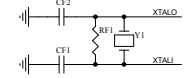


14PIN-2.0-D-H-G-B
 1K2ohm-0402±5%-1/16W
 2K2ohm-0402±5%-1/16W
 3K5ohm-0402±1%-1/16W
 5K6ohm-0402±1%-1/16W
 10Kohm-0402±1%-1/16W
 20Kohm-0402±1%-1/16W

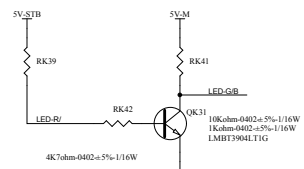
510ohm-0402±5%-1/16W
 0.1uf-0402-XSR±20%-16V
 4K7ohm-0402±1%-1/16W
 510ohm-0402±5%-1/16W



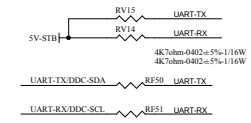
10Kohm-0402±5%-1/16W
 4K7ohm-0402±5%-1/16W
 0.1uf-0402-XSR±20%-16V
 GD25Q128HG



24MHz±20PPM-20PF-1C-496-TKD
 1Mohm-0402±5%-1/16W
 33pf-0402-NPO±5%-50V
 33pf-0402-NPO±5%-50V



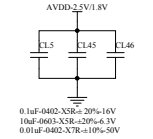
4K7ohm-0402±5%-1/16W
 1Kohm-0402±5%-1/16W
 1Kohm-0402±5%-1/16W
 1.5MΩ3904LTIG



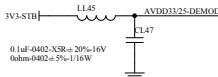
4K7ohm-0402±5%-1/16W
 4K7ohm-0402±5%-1/16W
 100ohm-0402±5%-1/16W
 100ohm-0402±5%-1/16W

TSUMV59XU-Z1

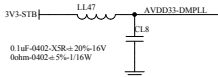
100	HDMI-KEP	100	AVDD_33
101	HDMI-KEP	101	AVDD_33
102	HDMI-KEP	102	AVDD_33
103	HDMI-KEP	103	AVDD_33
104	HDMI-KEP	104	AVDD_33
105	HDMI-KEP	105	AVDD_33
106	HDMI-KEP	106	AVDD_33
107	HDMI-KEP	107	AVDD_33
108	HDMI-KEP	108	AVDD_33
109	HDMI-KEP	109	AVDD_33
110	HDMI-KEP	110	AVDD_33
111	HDMI-KEP	111	AVDD_33
112	HDMI-KEP	112	AVDD_33
113	HDMI-KEP	113	AVDD_33
114	HDMI-KEP	114	AVDD_33
115	HDMI-KEP	115	AVDD_33
116	HDMI-KEP	116	AVDD_33
117	HDMI-KEP	117	AVDD_33
118	HDMI-KEP	118	AVDD_33
119	HDMI-KEP	119	AVDD_33
120	HDMI-KEP	120	AVDD_33
121	HDMI-KEP	121	AVDD_33
122	HDMI-KEP	122	AVDD_33
123	HDMI-KEP	123	AVDD_33
124	HDMI-KEP	124	AVDD_33
125	HDMI-KEP	125	AVDD_33
126	HDMI-KEP	126	AVDD_33
127	HDMI-KEP	127	AVDD_33
128	HDMI-KEP	128	AVDD_33
129	HDMI-KEP	129	AVDD_33
130	HDMI-KEP	130	AVDD_33
131	HDMI-KEP	131	AVDD_33
132	HDMI-KEP	132	AVDD_33
133	HDMI-KEP	133	AVDD_33
134	HDMI-KEP	134	AVDD_33
135	HDMI-KEP	135	AVDD_33
136	HDMI-KEP	136	AVDD_33
137	HDMI-KEP	137	AVDD_33
138	HDMI-KEP	138	AVDD_33
139	HDMI-KEP	139	AVDD_33
140	HDMI-KEP	140	AVDD_33
141	HDMI-KEP	141	AVDD_33
142	HDMI-KEP	142	AVDD_33
143	HDMI-KEP	143	AVDD_33
144	HDMI-KEP	144	AVDD_33
145	HDMI-KEP	145	AVDD_33
146	HDMI-KEP	146	AVDD_33
147	HDMI-KEP	147	AVDD_33
148	HDMI-KEP	148	AVDD_33
149	HDMI-KEP	149	AVDD_33
150	HDMI-KEP	150	AVDD_33
151	HDMI-KEP	151	AVDD_33
152	HDMI-KEP	152	AVDD_33
153	HDMI-KEP	153	AVDD_33
154	HDMI-KEP	154	AVDD_33
155	HDMI-KEP	155	AVDD_33
156	HDMI-KEP	156	AVDD_33
157	HDMI-KEP	157	AVDD_33
158	HDMI-KEP	158	AVDD_33
159	HDMI-KEP	159	AVDD_33
160	HDMI-KEP	160	AVDD_33
161	HDMI-KEP	161	AVDD_33
162	HDMI-KEP	162	AVDD_33
163	HDMI-KEP	163	AVDD_33
164	HDMI-KEP	164	AVDD_33
165	HDMI-KEP	165	AVDD_33
166	HDMI-KEP	166	AVDD_33
167	HDMI-KEP	167	AVDD_33
168	HDMI-KEP	168	AVDD_33
169	HDMI-KEP	169	AVDD_33
170	HDMI-KEP	170	AVDD_33
171	HDMI-KEP	171	AVDD_33
172	HDMI-KEP	172	AVDD_33
173	HDMI-KEP	173	AVDD_33
174	HDMI-KEP	174	AVDD_33
175	HDMI-KEP	175	AVDD_33
176	HDMI-KEP	176	AVDD_33
177	HDMI-KEP	177	AVDD_33
178	HDMI-KEP	178	AVDD_33
179	HDMI-KEP	179	AVDD_33
180	HDMI-KEP	180	AVDD_33
181	HDMI-KEP	181	AVDD_33
182	HDMI-KEP	182	AVDD_33
183	HDMI-KEP	183	AVDD_33
184	HDMI-KEP	184	AVDD_33
185	HDMI-KEP	185	AVDD_33
186	HDMI-KEP	186	AVDD_33
187	HDMI-KEP	187	AVDD_33
188	HDMI-KEP	188	AVDD_33
189	HDMI-KEP	189	AVDD_33
190	HDMI-KEP	190	AVDD_33
191	HDMI-KEP	191	AVDD_33
192	HDMI-KEP	192	AVDD_33
193	HDMI-KEP	193	AVDD_33
194	HDMI-KEP	194	AVDD_33
195	HDMI-KEP	195	AVDD_33
196	HDMI-KEP	196	AVDD_33
197	HDMI-KEP	197	AVDD_33
198	HDMI-KEP	198	AVDD_33
199	HDMI-KEP	199	AVDD_33
200	HDMI-KEP	200	AVDD_33



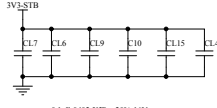
0.1uf-0402-XSR±20%-16V
 1uf-0402-XSR±20%-3V
 0.01uf-0402-XTR±10%-50V



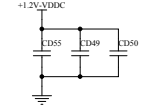
0.1uf-0402-XSR±20%-16V
 0ohm-0402±5%-1/16W



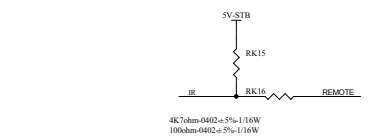
0.1uf-0402-XSR±20%-16V
 0ohm-0402±5%-1/16W



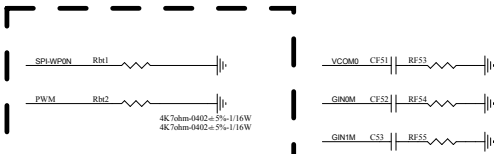
0.1uf-0402-XSR±20%-16V
 0.1uf-0402-XSR±20%-16V
 0.1uf-0402-XSR±20%-16V
 0.1uf-0402-XSR±20%-16V
 0.1uf-0402-XSR±20%-16V



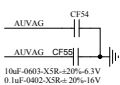
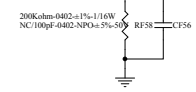
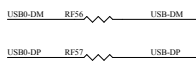
1uf-0402-XSR±20%-3V
 1uf-0402-XSR±20%-3V
 1uf-0402-XSR±20%-3V



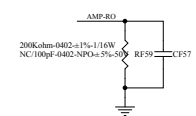
4K7ohm-0402±5%-1/16W
 100ohm-0402±5%-1/16W



0.047uf-0402-XTR±10%-16V
 6Kohm-0402±5%-1/16W
 0.047uf-0402-XTR±10%-16V
 6Kohm-0402±5%-1/16W
 0.047uf-0402-XTR±10%-16V
 6Kohm-0402±5%-1/16W
 0.047uf-0402-XTR±10%-16V
 6Kohm-0402±5%-1/16W

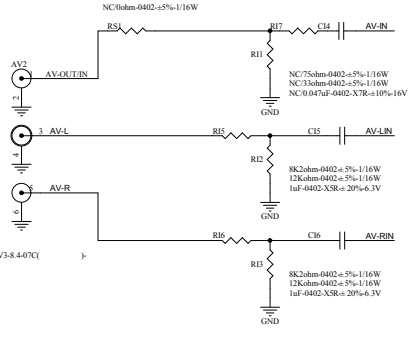
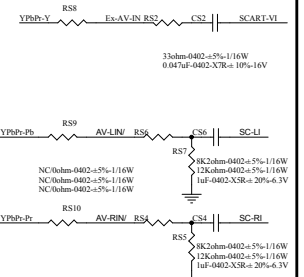
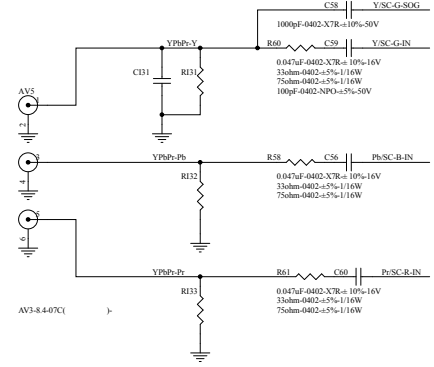
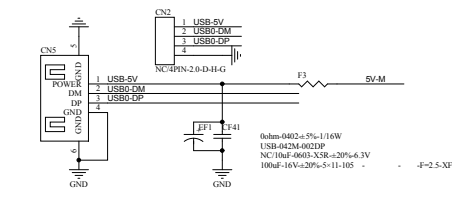
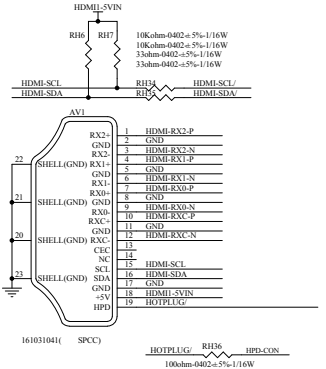
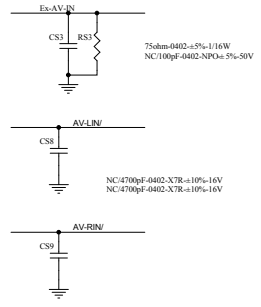
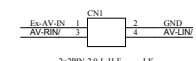
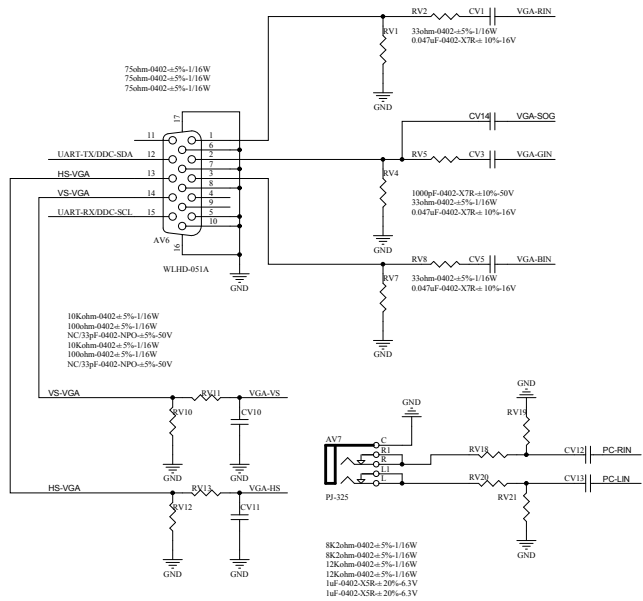


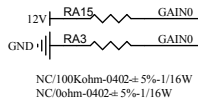
200Kohm-0402±1%-1/16W
 NC/100pf-0402-NPO±5%-50V
 0.1uf-0402-XSR±20%-16V



1	VCC_PANEL	1	VCC_PANEL
2	VCC_PANEL	2	GND
3	GND	3	GND
4	GND	4	GND
5	RX00+	5	RX00+
6	RX00-	6	RX00-
7	RX00+	7	RX00+
8	RX00-	8	RX00-
9	RX00+	9	RX00+
10	RX00-	10	RX00-
11	RX00+	11	RX00+
12	RX00-	12	RX00-
13	GND	13	GND
14	RX00+	14	RX00+
15	RX00-	15	RX00-
16	RX00+	16	RX00+
17	RX00-	17	RX00-
18	RX00+	18	RX00+
19	RX00-	19	RX00-
20	RX00+	20	RX00+
21	RX00-	21	RX00-
22	RX00+	22	RX00+
23	RX00-	23	RX00-
24	RX00+	24	RX00+
25	RX00-	25	RX00-
26	GND	26	GND
27	RX00+	27	RX00+
28	RX00-	28	RX00-
29	RX00+	29	RX00+
30	RX00-	30	RX00-

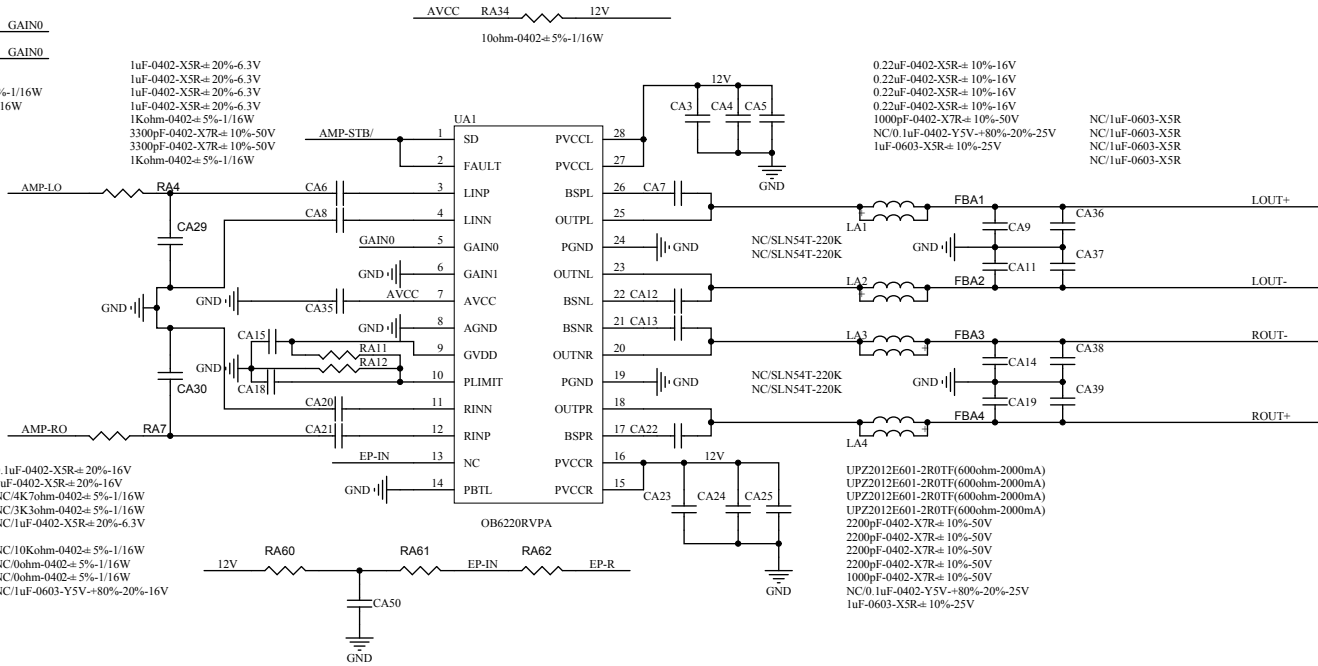
2+15PIN-2.0-D-H(M) (-2.6mm)LDX (PIN)





NC/100Kohm-0402±5%-1/16W
 NC/0ohm-0402±5%-1/16W

1uF-0402-X5R±20%-6.3V
 1uF-0402-X5R±20%-6.3V
 1uF-0402-X5R±20%-6.3V
 1uF-0402-X5R±20%-6.3V
 1Kohm-0402±5%-1/16W
 3300pF-0402-X7R±10%-50V
 3300pF-0402-X7R±10%-50V
 1Kohm-0402±5%-1/16W

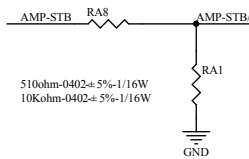


0.1uF-0402-X5R±20%-16V
 1uF-0402-X5R±20%-16V
 NC/4K7ohm-0402±5%-1/16W
 NC/3K3ohm-0402±5%-1/16W
 NC/1uF-0402-X5R±20%-6.3V
 NC/10Kohm-0402±5%-1/16W
 NC/0ohm-0402±5%-1/16W
 NC/0ohm-0402±5%-1/16W
 NC/1uF-0603-Y5V±80%-20%-16V

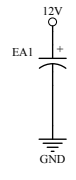
0.22uF-0402-X5R±10%-16V
 0.22uF-0402-X5R±10%-16V
 0.22uF-0402-X5R±10%-16V
 0.22uF-0402-X5R±10%-16V
 1000pF-0402-X7R±10%-50V
 NC/0.1uF-0402-Y5V±80%-20%-25V
 1uF-0603-X5R±10%-25V

NC/1uF-0603-X5R
 NC/1uF-0603-X5R
 NC/1uF-0603-X5R

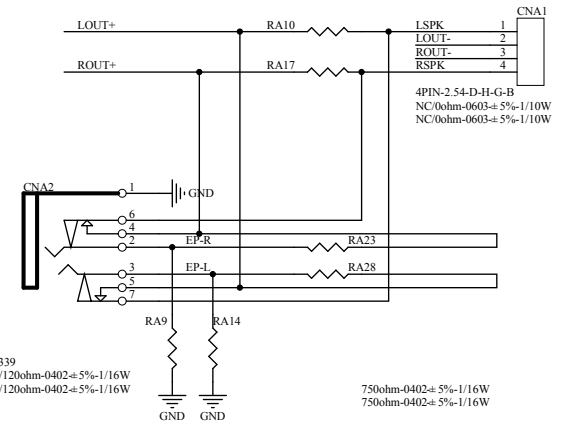
UPZ2012E601-2R0TF(600ohm-2000mA)
 UPZ2012E601-2R0TF(600ohm-2000mA)
 UPZ2012E601-2R0TF(600ohm-2000mA)
 UPZ2012E601-2R0TF(600ohm-2000mA)
 2200pF-0402-X7R±10%-50V
 2200pF-0402-X7R±10%-50V
 2200pF-0402-X7R±10%-50V
 2200pF-0402-X7R±10%-50V
 1000pF-0402-X7R±10%-50V
 NC/0.1uF-0402-Y5V±80%-20%-25V
 1uF-0603-X5R±10%-25V



510ohm-0402±5%-1/16W
 10Kohm-0402±5%-1/16W

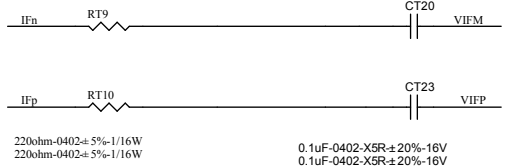


470uF-16V±20%-8×9-105 -XL



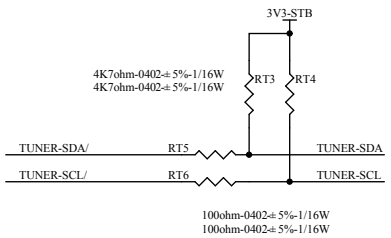
PJ-339
 NC/120ohm-0402±5%-1/16W
 NC/120ohm-0402±5%-1/16W

750ohm-0402±5%-1/16W
 750ohm-0402±5%-1/16W

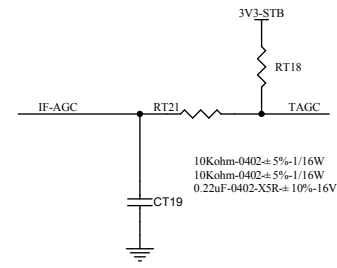


220ohm-0402±5%-1/16W
220ohm-0402±5%-1/16W

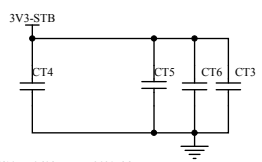
0.1uF-0402-XSR±20%-16V
0.1uF-0402-XSR±20%-16V



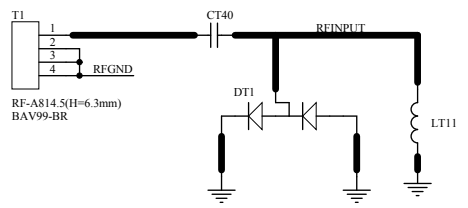
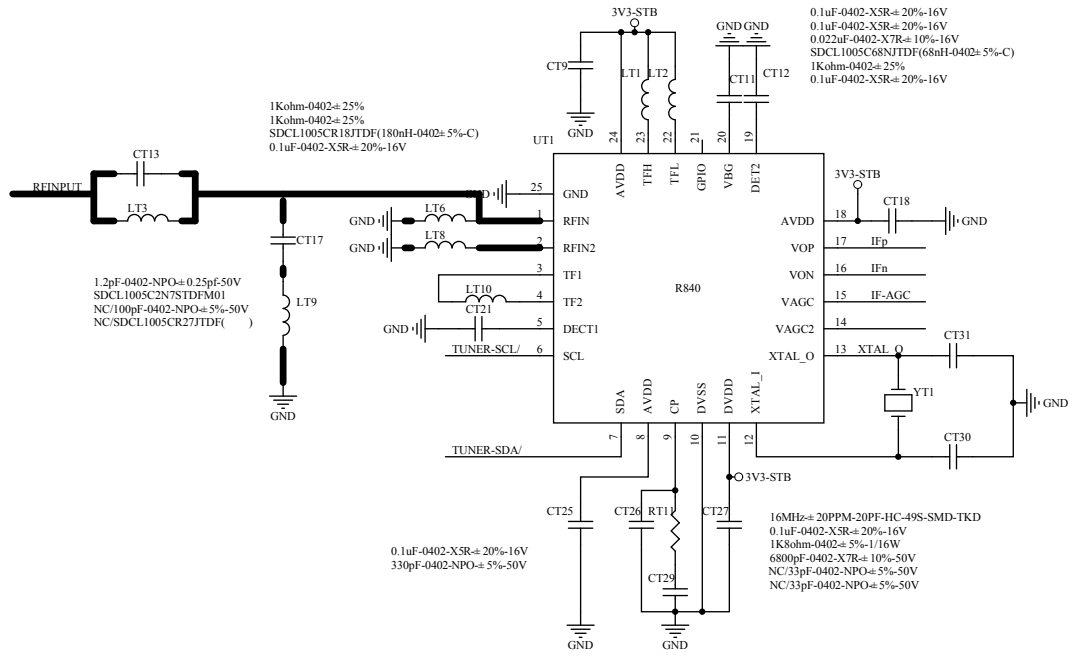
100ohm-0402±5%-1/16W
100ohm-0402±5%-1/16W



10Kohm-0402±5%-1/16W
10Kohm-0402±5%-1/16W
0.22uF-0402-XSR±10%-16V



NC/10uF-0603-XSR±20%-6.3V
0.1uF-0402-XSR±20%-16V
10uF-0603-XSR±20%-6.3V
NC/10uF-0603-XSR±20%-6.3V



470pF-0402-X7R±10%-50V
4700pF-1206-X7R±10%-1000V
1000pF-1206-X7R±20%-2000V
4700pF-1206-X7R±10%-1000V
1000pF-1206-X7R±20%-2000V
NC/1000pF-1206-X7R±20%-2000V
NC/1000pF-1206-X7R±20%-2000V
NC/SDCL1005CR27JTDF()

