

MYSTERY

Service Manual

MMR-313



CAR Mp4 PLAYER

CONTENTS

Specification..	02
Disassembly Instructions.	03
Operation Check.	04
Alignment and adjustment.	05
Troubleshooting.	07
Printed Circuit Boards.	08
Wiring Diagram.	13
Electrical Parts List.	14
Exploded View.	20
Mechanical Parts List.	23
Schematic Diagrams.	26

SPECIFICATION

General

Power Supply Requirements:	DC 14.4V $\overline{\text{---}}$, Negative Ground
Current consumption(max):	15 Ampere
Load Impedance:	4 ohms
Maximum Output Power:	25W x 4(CH)
Chassis Dimensions:	178 x 163x 50mm (W x D x H)

DVD Deck Section

Discs Played:	DVD, MPEG4, DIVX, VCD 1.0/2.0/3.0, MP3 WMA, CD, CD-R, CD-RW, Picture-CD
Video System:	AUTO/PAL/NTSC
Mounting Angle:	0°~30°

Video Section

Video System:	4:3 Letter Box, 4:3 Pan Scan, 16:9
Video Output Level:	1.0V p-p 75 ohms

Audio Section

Maximum Output LEVEL:	2Vrms (+ 3 dB)
Frequency Response:	20 ~ 20KHz
Signal-to-noise Ratio:	65dB
Separation:	60dB

FM Tuner Section

Tuning Range:	87.5 - 108MHz
---------------	---------------

IF	10.7MHz
Usable Sensitivity (-30dB)	15dB
Signal-to-noise Ratio:	60dB
Stereo Separation:	30dB (1KHz)
Frequency Response:	30 ~ 15000 Hz

AM Tuner Section

Tuning Range:	522 - 1620KHz (
IF	450KHz
Usable Sensitivity(-20dB) :	28dB

NOTE:Design and specifications are subject to change without notice for improvements.

DISASSEMBLY INSTRUCTIONS

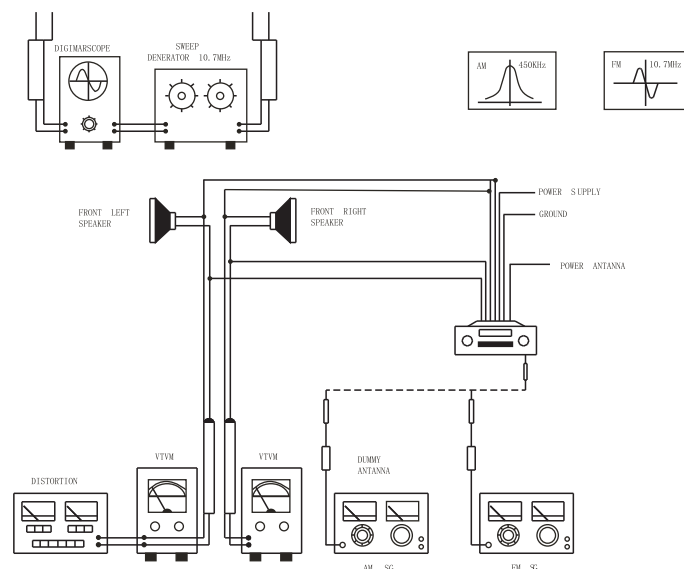
- 1.Mounting Box:** Slide out the mounting box in parallel.
- 2.Top cover:** Release screw at the back of top cover, and pull out the cover.
- 3.Bottom Cover:** Turn over the unit to release the screws at the back of bottom cover and one the top surface. Pull out the cover.
- 4.Disassemble the Panel:**
Pull out the Front panel.
Release the left side and right side screws attached to with the base.
Pull the base out of the unit.
- 5.Disassemble the mechanism deck:**
There are two screws to lock the mechanism deck at front ,Unscrew both of them.
Remove the solder from fixed wires on the main, and remove the deck.
- 6.Disassemble the key board :**
Release four screws .
Remove the back panel .
Then remove the key board.
- 7.Unscrew the left side bracket and the right side bracket.** There are two screw on each side.
- 8.Disassemble the main board :**
- 9.Unscrew two screw at the leef bracket**
remove the solder from the Tuner,and main board.
Uncrew two screw ar the ANT.Remove the solder from fixed wires.
Unscrew two crew at the Heatsink.
Remove the main board.

OPERATION CHECK

GENERAL SPECIFICATIONS OF SIGNAL

Standard frequency	AM	1000 KHz (600, 1400 KHz)
	FM	98.0 MHz (90.0, 106.0 MHz)
Signal output	AM	74 dB/uV
	FM	60 dB/uV
Modulation	AM	1 kHz 30%
	FM mono	1 KHz 22.5KHz
AF output level	AM/FM	
Power source voltage	DC 14.4 V (backup voltage is the same as this)	
AF load impedance	4 ohm pure resistance	
Balance	Mechanical center	
Tone	Mechanical center	

The signal strength read in this section is voltage on the antenna.



Note : Use an RF generator for the AM band and a sweep generator for the FM band.

ADJUSTMENT

FM IF/RF ADJUSTMENT

Equipment Required

FM IF/RF signal generator
 Oscilloscope
 Solid-state voltmeter (SSVM)
 Frequency counter
 Regulated DC power supply
 DC digital voltmeter
 Distortion meter

FM IF and RF Alignment Using FM Signal Generator

Note : Press the radio power switch to turn on the radio. Signal generator output must be kept as low as possible to avoid overload and clipping.

Setup	Generator Coupling	Generator	Display Setting	Indicator Coupling	Adjust ment	Remarks
IF	FM RF signal generator to ANT i/p	10.7 MHz sweep output 60 dB/uV	98.0 Mhz	Connect oscilloscope to Ic1 pin 3 & ground	T1	Adjust so that maximum AF output power and minimum distortion.
RF Low High	Signal generator to antenna receptacle	90MHz Int 1 KHz 22.5KHz mod. output 30dB/uV 106MHz Int 1 KHz 22.5 KHz mod. output 30 dB/uV	90 MHz 106 MHz	SSVM across speaker	C3 L1	Adjust AF output power for maximum

ADJUSTMENT

AM /RF ADJUSTMENT

Equipment Required

- >AM/RF signal generator
- >Oscilloscope
- >Solid-state voltmeter (SSVM)
- >Frequency counter
- >Regulated DC power supply
- >DC digital voltmeter
- >Distortion meter

AM/RF and RF Alignment Using AM Signal Generator

Note : Press the radio power switch to turn on the radio. Signal generator output must be kept as low as possible to avoid overload and clipping.

Setup	Generator Coupling	Generator	Display Setting	Indicator Coupling	Adjust ment	Remarks
RF	Signal generator to antenna receptacle	600 KHz Int 1 KHz 30% mod. Output 74 dB/uV	600 KHz	SSVM across speaker	C1	Adjust AF output power for maximum
RF Cont.	Signal generator to antenna receptacle	1400 KHz Int 1 KHz 30% mod. 74 dB/uV	1400 Mhz	SSVM across speaker	L3	Adjust AF output power maximum

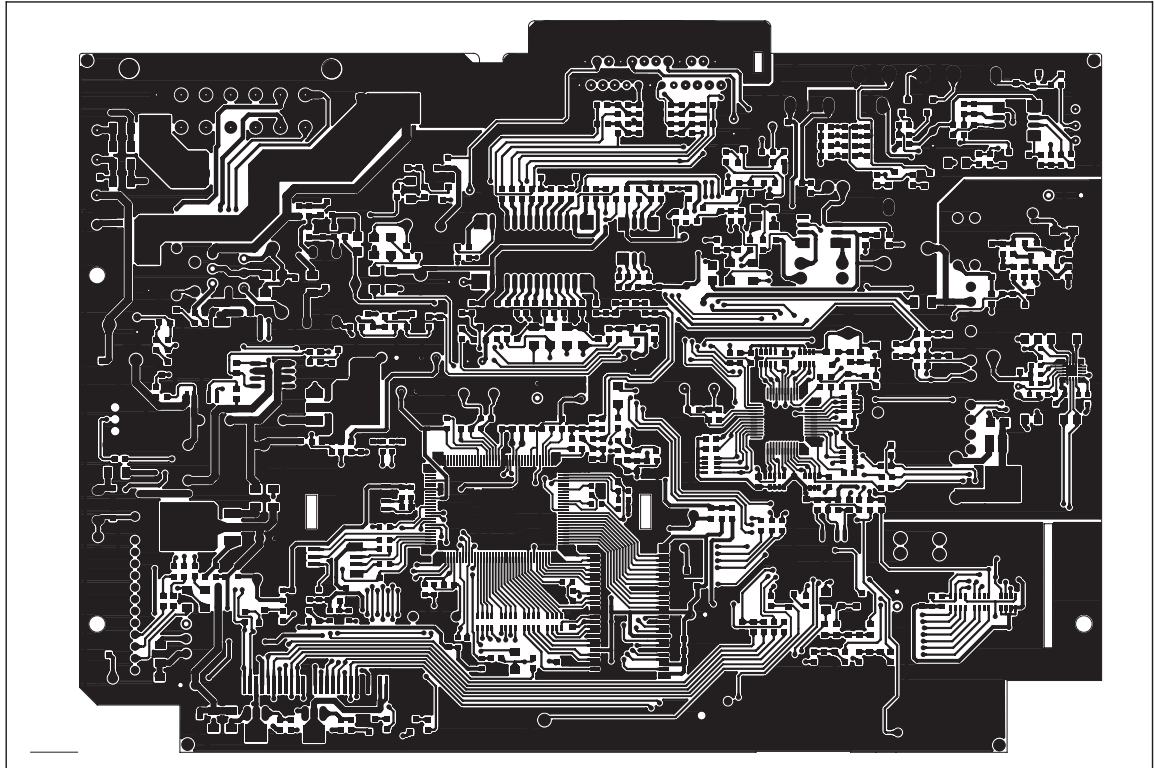
TROUBLE SHOOTING

Before going through the check list, check wiring connection.
If any of the problems persist after checklist has been made,
consult your nearest service dealer

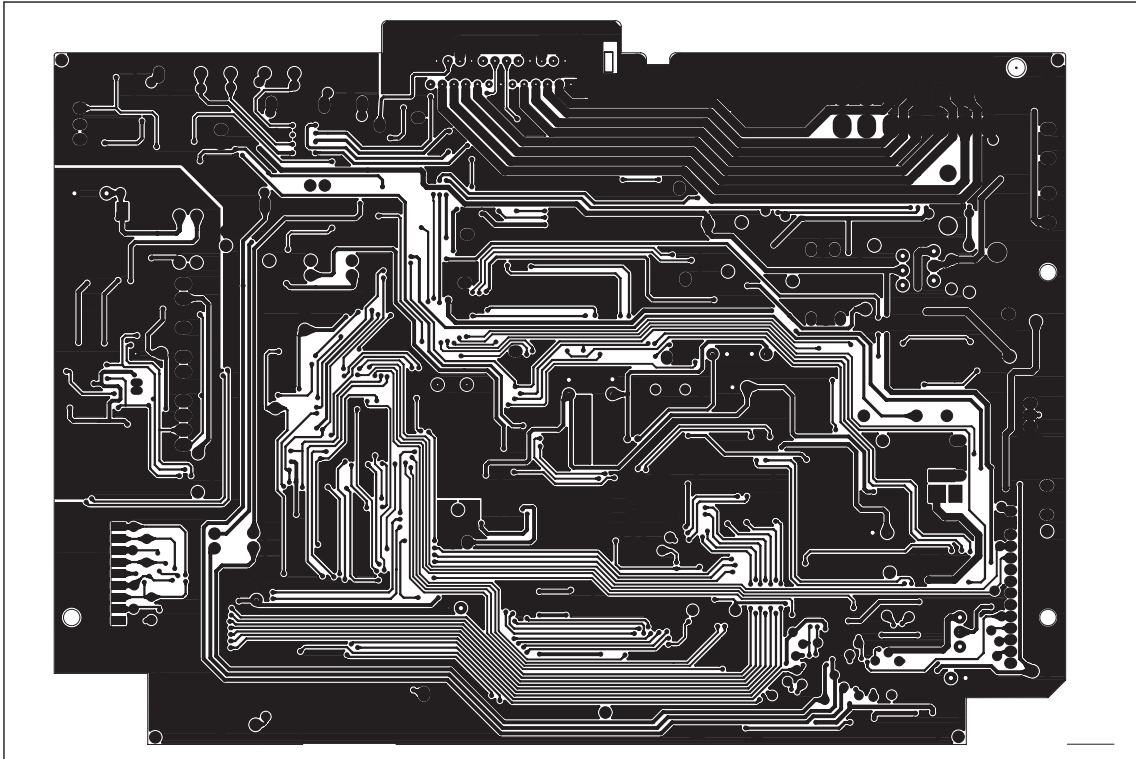
Symptom	Causes	Solution
No Power	The car ignition key not been switched on	If the power supply is properly connected to the car accessory terminal, switch the ignition key to ACC
	The fuse is blown	Replace a new fuse
CD Cannot Be Loaded or Ejected	A CD is already inside the player slot	Remove the CD from the player and insert the new one
	Inserting the CD in reverse direction	Insert the CD with the label facing up
	The CD is extremely dirty or defected	Clean the CD or try to play a new one
	Temperature inside the car is too high	Cool off until the ambient temperature return to normal
	Condensation	Leave the player off for an hour or so and try again
No Sound	Volume is at minimum	Adjust volume to desired level
	Wiring is not properly connected	Check wiring connection
Sound Skipping	The installation angle is more than 30 °	Adjust the installation angle to less than 30 °
	CD is extremely dirty or Defected	Clean the CD or try to play a new one
The Operation Keys Do Not Work	The built-in microcomputer is not operating properly due to Interference	Press the RESET button or reinstall the front panel properly
The Radio or Automatic Selection Does Not Work	The antenna cable is not connected correctly	Connect the antenna cable correctly
	The signals are too weak	Select the station manually

PRINTED CIRCUIT BOARDS

MAIN BOARD (LAYOUT)

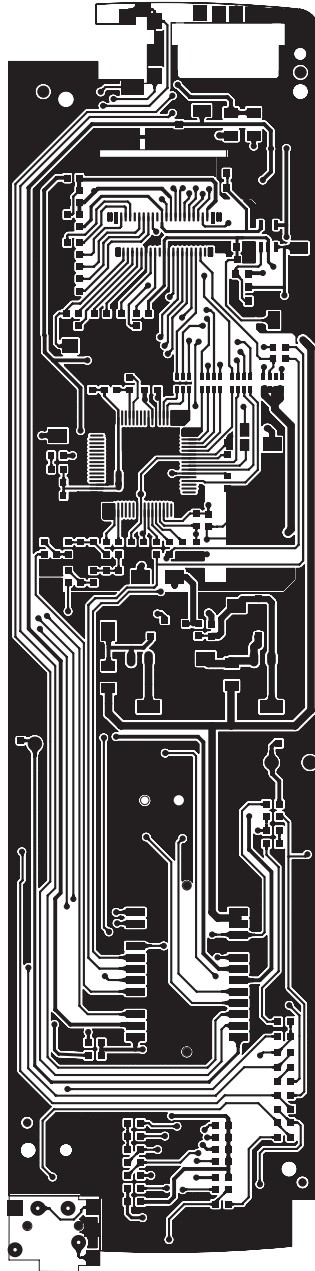


PRINTED CIRCUIT BOARDS

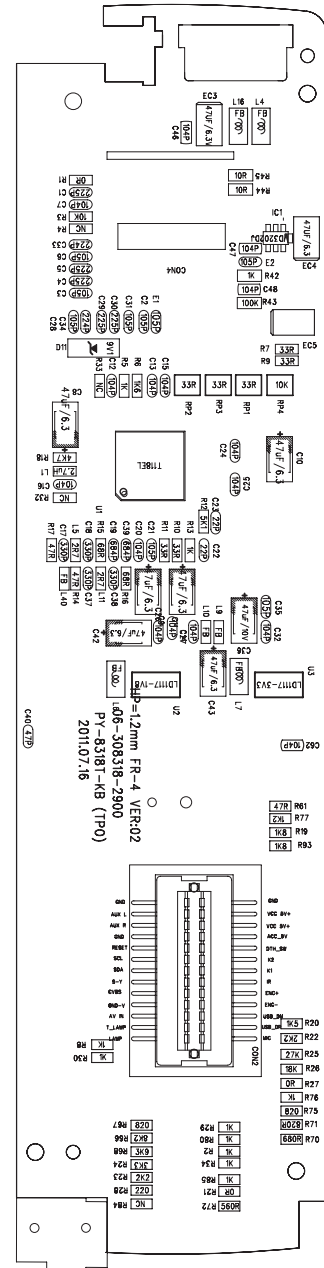


PRINTED CIRCUIT BOARDS

Key-Copper-Bottom

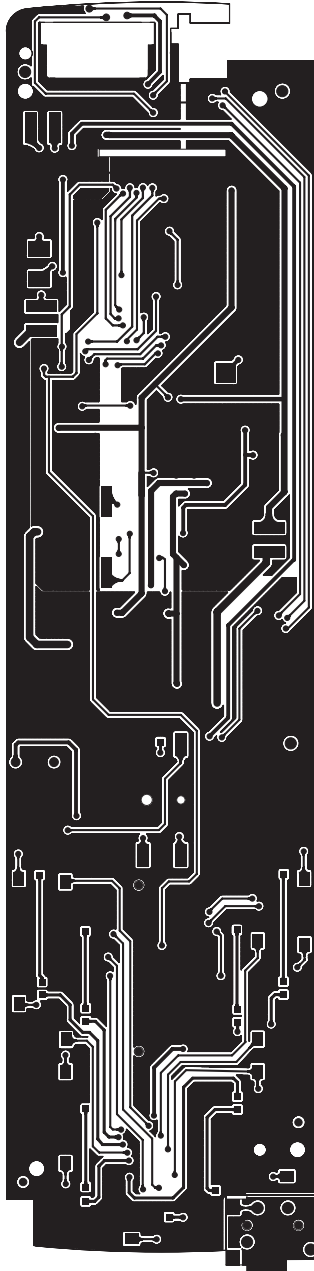


Key-Silkscreen-bottom

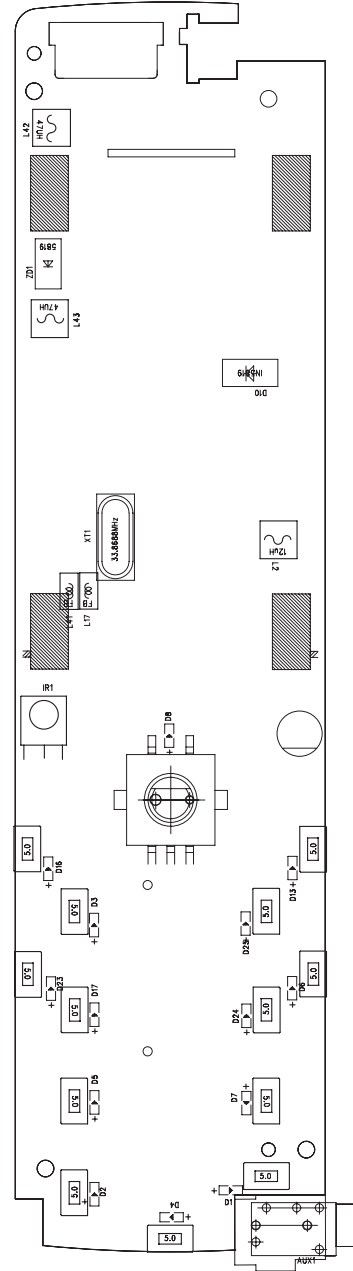


PRINTED CIRCUIT BOARDS

Key-Copper-Top

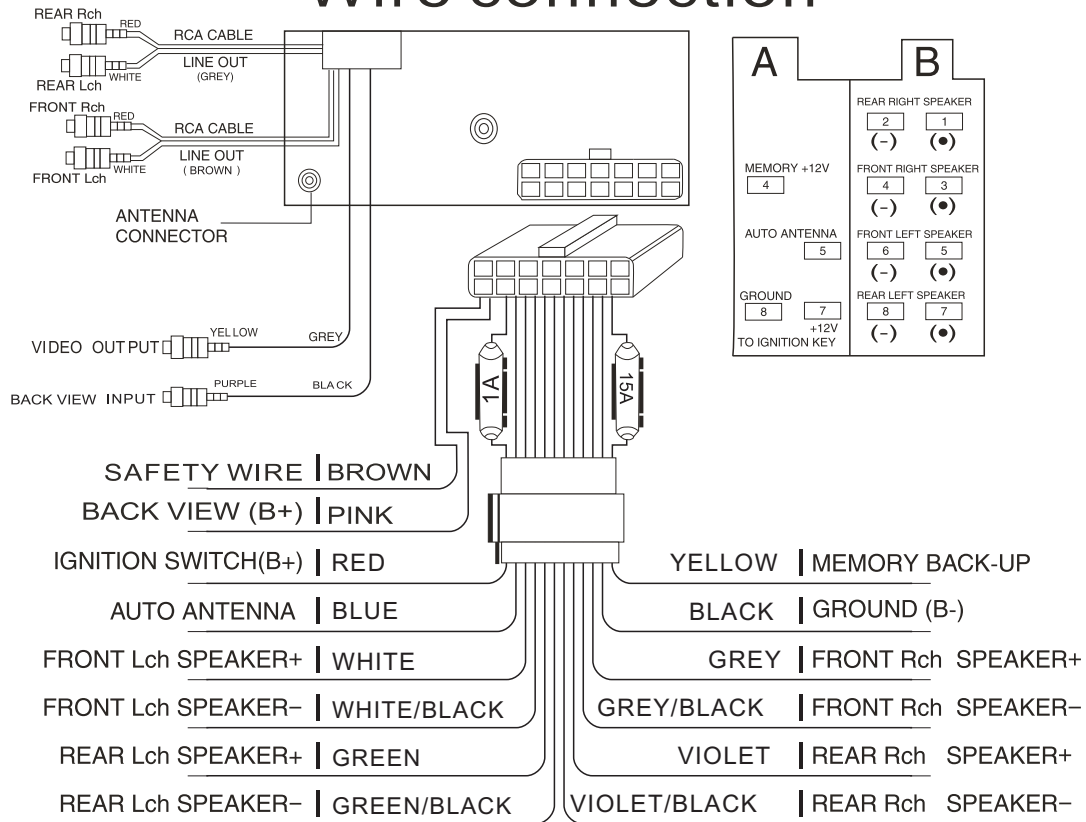


Key-Silkscreen-Top



WIRING DIAGRAM

Wire connection



Electical Parts List

06-109268-2900-0F-N	主板9268M4 (4*25W) ISO插座+无同轴, 3寸屏 俄罗斯频率	pc s	1.00000
04-022114-0100	晶体22.1184MHZ 20PF. ±30PPM	pc s	1.00000
04-027001-0100	插件晶体 27.000MHz 30PPM S型 30PPM S型	pc s	1.00000
07-113060-0101	热敏电阻 300mA 60V T60-030	pc s	1.00000
08-210222-1029	电解电容 16V 2200UF ±20% 10*20	pc s	1.00000
10-080436-0201	插件三极管 2SB436 (塑封)	pc s	1.00000
10-090435-0201	插件三极管 2SD435 TO-251 40V, 3A, 10W(塑封)	pc s	2.00000
11-020431-0700	IC TO-92, TL431	pc s	1.00000
11-037388-0600	IC TDA7388	pc s	1.00000
11-478L05-0600	集成电路 TO-92 NJM78L05	pc s	1.00000
12-114001-0000	普通二极管 IN4001	pc s	2.00000
12-115404-0000	直插二极管, IN5404 D0-27	pc s	1.00000
12-115819-0120	插件二极管 IN5819	pc s	1.00000
14-200013-2570	单掷开关 PITH=2.0 4.4*8.6	pc s	1.00000
14-500512-1500	轻触开关 RESET	pc s	1.00000
14-300112-1000	推按开关 DTH	pc s	1.00000
16-214221-6400	扼流圈 220uH/3A, 14X6.6X13mm	pc s	1.00000
16-613103-0001	插件电感 ϕ =1.0mm 1mH	pc s	1.00000
17-010303-1101	LED灯 3 Φ 红发红 普亮(主机) 主机用	pc s	1.00000
21-014210-0078	输出线back input video line (紫色)210MM±10 地线0.12MM*32股 正线0.16MM*7股(黄铜线)	pc s	1.00000
21-200210-0060	输出线video output line (灰色)210MM±10 地线0.12MM*32股 正线0.16MM*7股(黄铜线)	pc s	1.00000
21-306210-1014	RCA输出线 (棕色) 210MM±10 地线0.12MM*32股 正线0.16MM*7股(黄铜线)	pc s	1.00000
21-306210-1015	RCA输出线 (灰色) 210MM±10, 地线0.1MM*50股 正线0.13MM*7股(黄铜线)	pc s	1.00000
33-040340-0001	天线插座 ANT	pc s	1.00000
34-010114-0712	14P输出线 公插带2个保险丝 (一个1A, 一个15A) (加一条粉红色, 一条棕色线) (ISO插) L=185MM/400MM 地线(B-) 正线(B+) 0.24MM*26股其它线: 0.14MM*21股(黄铜线)	pc s	1.00000
34-010114-0700	输出线插座 14PIN	pc s	1.00000
06-109268-2900-1F-N	主板9268M4 (4*25W) ISO插座+无同轴, 3寸屏 俄罗斯频率 外发	pc s	1.00000
06-109268-2900	MB9268M4 (4*25W) 123.8*186.7*1.2MM 1/1PCS	pc s	1.00000
07-060000-0940	贴片排阻 0R 5% 0603	pc s	2.00000
07-080000-9900	贴片电阻 0 5% 0603	pc s	10.00000
07-080101-9900	贴片电阻 100 5% 0603	pc s	9.00000
07-080102-0800	贴片电阻 SMD 1K 1206 1/4W 5%	pc s	2.00000
07-080102-9900	贴片电阻 1K 5% 0603	pc s	11.00000
07-080103-9900	贴片电阻 10K 5% 0603	pc s	32.00000

Electical Parts List

07-080103-9940	贴片排阻 10K 5% 0603	pc s	8.00000
07-080104-9900	贴片电阻 100K 5% 0603	pc s	7.00000
07-080151-0800	贴片电阻 SMD 150R 1206 1/4W 5%	pc s	1.00000
07-080153-9900	贴片电阻 15K 5% 0603	pc s	2.00000
07-080182-9900	贴片电阻 1K8 5% 0603	pc s	2.00000
07-080203-9900	贴片电阻 20K 5% 0603	pc s	1.00000
07-080220-0800	贴片电阻 SMD 22R 1206 1/4W 5%	pc s	2.00000
07-080220-9900	贴片电阻 22 5% 0603	pc s	3.00000
07-080222-9900	贴片电阻 2K2 5% 0603	pc s	9.00000
07-080223-9900	贴片电阻 22K 5% 0603	pc s	14.00000
07-080303-9900	贴片电阻 30K 5% 0603	pc s	1.00000
07-080330-9900	贴片电阻 33 5% 0603	pc s	3.00000
07-080330-9940	贴片排阻 33 5% 0603	pc s	4.00000
07-080332-9900	贴片电阻 3K3 5% 0603	pc s	4.00000
07-080470-9900	贴片电阻 47 5% 0603	pc s	4.00000
07-080471-9900	贴片电阻 470 5% 0603	pc s	1.00000
07-080472-9900	贴片电阻 4K7 5% 0603	pc s	24.00000
07-080473-9900	贴片电阻 47K 5% 0603	pc s	19.00000
07-080562-9900	贴片电阻 5K6 5% 0603	pc s	9.00000
07-080680-9900	贴片电阻 68 5% 0603	pc s	1.00000
07-080750-9900	贴片电阻 75 5% 0603	pc s	1.00000
08-216100-2022	电解电容 10uF/25V ±20% Φ4X5mm 排带2.5MM脚距,平底部伸出	pc s	5.00000
08-216220-1022	电解电容 22UF/16V ±20% Φ4X5mm 排带2.5MM脚距,平底部伸出	pc s	1.00000
08-216108-5022	电解电容 1UF/50V ±20% Φ4X5mm 排带2.5MM脚距,平底部伸出	pc s	1.00000
08-216470-1022	电解电容 47uF/16V ±20% Φ4X5mm 排带2.5MM脚距,平底部伸出	pc s	3.00000
08-216101-0029	电解电容 100UF/10V ±20% Φ5X5mm 排带2.5MM脚距,平底部伸出	pc s	15.00000
08-216101-1029	电解电容 100UF/16V ±20% Φ6.3X5mm 排带2.5MM脚距,平底部伸出	pc s	3.00000
08-216221-0029	电解电容 220UF/10V ±20% Φ6.3*5mm 排带2.5MM脚距,平底部伸出	pc s	10.00000
08-216478-5022	电解电容 4.7UF/50V ±20% Φ4X5mm 排带2.5MM脚距,平底部伸出	pc s	1.00000
09-088100-1300	贴片电容 10P/50V 0603 ±5%	pc s	2.00000

Electical Parts List

09-088101-1300	贴片电容 100P/50V 0603 $\pm 5\%$	pcs	6.00000
09-088102-1300	贴片电容 102/50V 0603 $\pm 10\%$	pcs	6.00000
09-088103-1300	贴片电容 103/50V 0603 $\pm 10\%$	pcs	8.00000
09-088104-1300	贴片电容 104/25V 0603 $\pm 10\%$	pcs	47.00000
09-088105-1300	贴片电容 105/16V 0603 $\pm 10\%$	pcs	26.00000
09-088153-1300	贴片电容 153/50V 0603 $\pm 10\%$	pcs	2.00000
09-088200-1300	贴片电容 20P/50V 0603 $\pm 5\%$	pcs	2.00000
09-088221-1300	贴片电容 220P/50V 0603 $\pm 5\%$	pcs	6.00000
09-088223-1300	贴片电容 223/50V 0603 $\pm 10\%$	pcs	2.00000
09-088330-1300	贴片电容 33P/50V 0603 $\pm 5\%$	pcs	2.00000
09-088474-1300	贴片电容 474/16V 0603 $\pm 10\%$	pcs	2.00000
09-088682-1300	贴片电容 682/50V 0603 $\pm 10\%$	pcs	2.00000
10-021132-1280	贴片三极管 SOT-89, 2SB1132	pcs	2.00000
10-178050-7170	贴片三极管 SOT-23, C8050	pcs	6.00000
10-178550-7170	贴片三极管 SOT-23, C8550	pcs	4.00000
10-179014-7170	贴片三极管 KTC9014S-PTK/P, SOT-23	pcs	13.00000
11-004016-0201	集成电路 IC SSOP-54 SAMSUNG UC60 4X16M	pcs	1.00000
11-007313-0401	四声道输出数字音频控制处理IC 7313	pcs	1.00000
11-009435-0400	集成电路 SOP-8, 9435A	pcs	1.00000
11-025T80-0400	IC 8M FLASH (SPI EN25T80) SO-8	pcs	1.00000
11-092244-0400	IC SOP-8, NJM2244	pcs	1.00000
11-102402-0400	IC SOP-8, 24C02N	pcs	1.00000
11-150750-0400	集成电路 SOP-252-5, 1507-50	pcs	1.00000
11-321117-0900	IC LD1117 (3.3V) TO-223	pcs	1.00000
11-411718-0000	IC TO-223, LD1117 (1.8V)	pcs	1.00000
11-464558-0400	IC KIA4558D SOP8 SMD贴片	pcs	1.00000
11-6608M4-0005	集成电路 LJ6608RQ+OIRT MCU (TFT+4730IC) M4 (卓显微) 16:9	pcs	1.00000
11-498202-0501	IC SPHE8202RQ QFP128	pcs	1.00000
12-214148-0011	贴片二极管 IN4148 1206 圆柱形	pcs	12.00000
12-300051-0021	贴片稳压二极管 5.1V (4.95V~5.15V) 1206	pcs	1.00000
12-300062-0021	贴片稳压二极管 6.2V (6.05V~6.25V) 1206	pcs	1.00000
12-300091-0021	贴片稳压二极管 9.1V (9.05V~9.20V) 1206	pcs	1.00000
12-300100-0021	贴片稳压二极管 10V (9.90V~10.02V)	pcs	1.00000
16-0A1108-0000	贴片电感 1uH 0603	pcs	1.00000
16-0A1470-0000	贴片电感 0805 47uH	pcs	2.00000
16-0A2100-0000	贴片电感 1210 10uH	pcs	1.00000
16-A00000-1003	贴片磁珠 FB 0 Ω 0603	pcs	3.00000
16-A00100-0000	贴片电感 0603, 10uH	pcs	9.00000

Electical Parts List

16-AA2000-0000	贴片磁珠 1206 FB320	pcs	4.00000
34-010326-0321	贴片插座 26P 1.0MM PITCH (卷带封装)	pcs	1.00000
06-C08198-2000-1-N	8字头DVD (SD卡板)	pcs	1.00000
06-C08198-2000	SD卡板 PY-8198D-SDB PCB, HP=1. mm, FR-4 83.97*92.7/4pcs 双面板	pcs	1.00000
19-010091-1001	SD卡座 SDBMF-009XXBOXZ	pcs	1.00000
06-309128-2004-0-N	SI4730高频头部分 (DVD) 插件	pcs	1.00000
04-032768-0100	插件 32.768KHZ 圆柱形晶体 3X8MM	pcs	1.00000
08-210101-1029	电解电容 16V 100UF ±20% 6.3*5	pcs	1.00000
16-600221-0001	插件色环电感 220uH	pcs	1.00000
19-115121-1201	12PIN 弯针 间距2.5MM	pcs	1.00000
21-080071-0200	屏蔽线 70MM	pcs	1.00000
06-309128-2004-1-N	SI4730高频头部分 (DVD) 外发件	pcs	1.00000
06-309128-2004	PY-9128T-TUNE 112.9*143.1*1.2MM/16PCS	pcs	1.00000
07-080000-9900	贴片电阻 0 5% 0603	pcs	1.00000
07-080100-9900	贴片电阻 10 5% 0603	pcs	2.00000
07-080224-9900	贴片电阻 220K 5% 0603	pcs	2.00000
07-080472-9900	贴片电阻 4K7 5% 0603	pcs	2.00000
07-080473-9900	贴片电阻 47K 5% 0603	pcs	1.00000
09-088180-1300	贴片电容 18P/50V 0603 ±5%	pcs	1.00000
09-088104-1300	贴片电容 104/25V 0603 ±10%	pcs	2.00000
09-088105-1300	贴片电容 105/16V 0603 ±10%	pcs	2.00000
09-088200-1300	贴片电容 20P/50V 0603 ±5%	pcs	2.00000
09-088223-1300	贴片电容 223/50V 0603 ±10%	pcs	3.00000
09-088272-1300	贴片电容 272/50V 0603 ±10%	pcs	1.00000
09-088330-1300	贴片电容 33P/50V 0603 ±5%	pcs	2.00000
09-088474-1300	贴片电容 474/16V 0603 ±10%	pcs	2.00000
10-009018-0170	贴片三极管 SOT-23, S9018	pcs	1.00000
10-179014-7170	贴片三极管KTC9014S-PTK/P, SOT-23	pcs	1.00000
11-004730-0400	IC SI4730	pcs	1.00000
11-321117-0900	IC LD1117 (3.3V) TO-223	pcs	1.00000
12-214148-0011	贴片二极管 IN4148 1206 圆柱形	pcs	2.00000
16-000338-1001	贴片电感 3.3uH 0603	pcs	2.00000
16-0A1108-0000	贴片电感 1UH 0603	pcs	1.00000
16-0A1158-1000	贴片电感 150NH 603	pcs	1.00000
16-0A1279-1000	贴片电感 0603 270nH	pcs	1.00000
06-308318-2900-0F-N	前板PY-8318T-KB(卓显微) 绿色灯光 M4	pcs	1.00000
13-118000-2101	VOL 贴片 编码器	pcs	1.00000
19-220041-1002	USB插座 USB-A06-4DIP(黑色) 大头插座	pcs	1.00000
19-116262-1401	26P贴片插座(公插)	pcs	1.00000
19-210031-0201	A/V插件插座 Φ3.5mm, AV+L+R	pcs	1.00000
21-317230-0060	AV连接线 AV+L+R 230mm±10 地线0.1MM*21股, 正线0.13MM*7股(黄铜线)	pcs	1.00000
28-50H300-0013	卓显微 3寸/16:9 TFT屏 GD030WQ01FV-B(75.31*43.44*2.58MM)	pcs	1.00000
74-020860-0220	遥控接收头 8*6MM(15M/5V)	pcs	1.00000
06-308318-2900-1E-N	前板PY-8318T-KB(卓显微) 绿色灯光 M4	pcs	1.00000

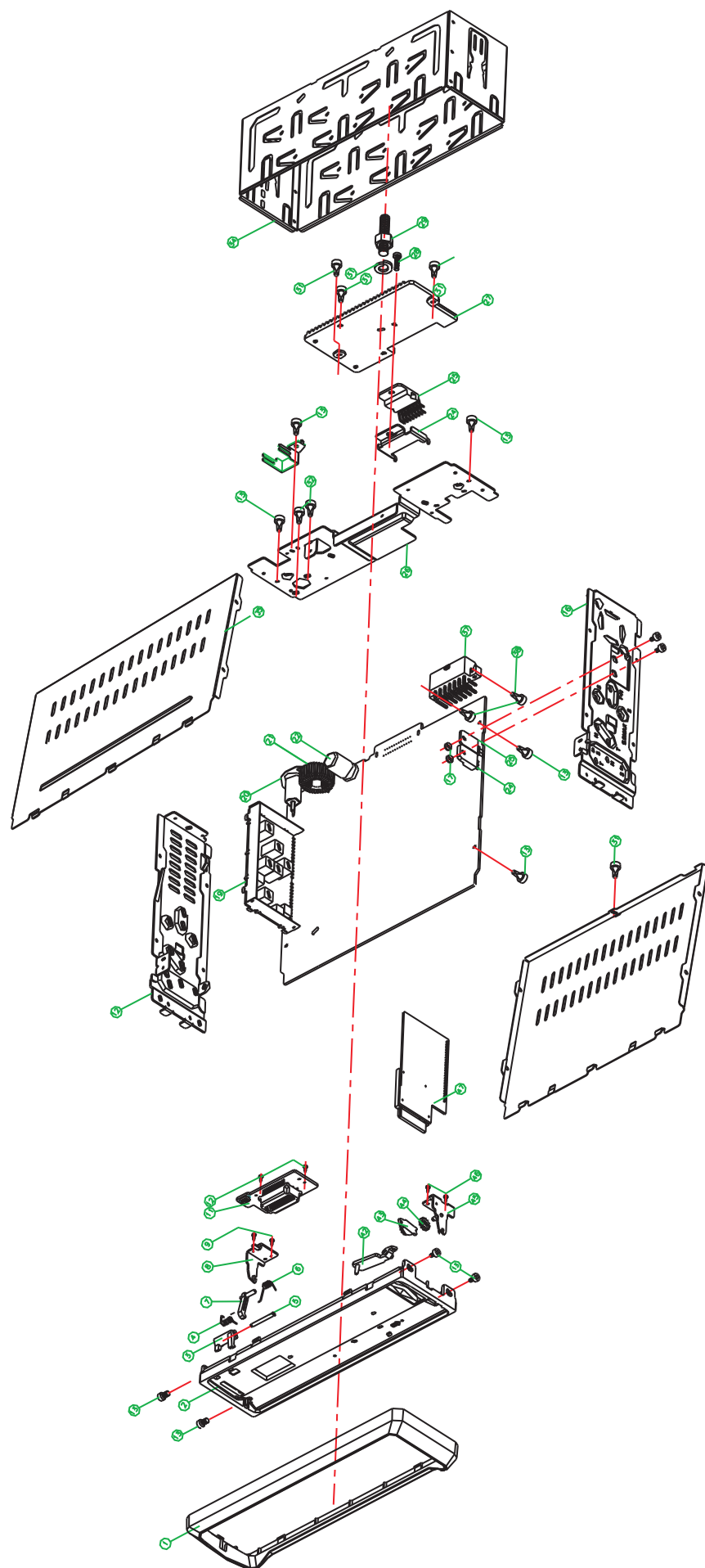
Electical Parts List

04-033868-0200	贴片晶体 33.8688MHZ 49S/SMD	pc s	1.00000
06-308318-2900	前板 PY-8318T-KB (TP0) FR-4 164*180.87*1.2mm 1/4	pc s	1.00000
07-080000-9900	贴片电阻 0 5% 0603	pc s	3.00000
07-080100-9900	贴片电阻 10 5% 0603	pc s	3.00000
07-080102-9900	贴片电阻 1K 5% 0603	pc s	11.00000
07-080103-9900	贴片电阻 10K 5% 0603	pc s	1.00000
07-080512-9900	贴片电阻 5K1 5% 0603	pc s	1.00000
07-080103-9940	贴片排阻 10K 5% 0603	pc s	1.00000
07-080104-9900	贴片电阻 100K 5% 0603	pc s	1.00000
07-080122-9900	贴片电阻 1K2 5% 0603	pc s	1.00000
07-080152-9900	贴片电阻 1K5 5% 0603	pc s	1.00000
07-080162-9900	贴片电阻 1K6 5% 0603	pc s	1.00000
07-080182-9900	贴片电阻 1K8 5% 0603	pc s	2.00000
07-080183-9900	贴片电阻 18K 5% 0603	pc s	1.00000
07-080228-9900	贴片电阻 2R2 5% 0603	pc s	2.00000
07-080220-9900	贴片电阻 22 5% 0603	pc s	1.00000
07-080221-9900	贴片电阻 220 5% 0603	pc s	1.00000
07-080222-9900	贴片电阻 2K2 5% 0603	pc s	2.00000
07-080273-9900	贴片电阻 27K 5% 0603	pc s	1.00000
07-080330-9900	贴片电阻 33 5% 0603	pc s	4.00000
07-080330-9940	贴片排阻 33 5% 0603	pc s	3.00000
07-080332-9900	贴片电阻 3K3 5% 0603	pc s	1.00000
07-080392-9900	贴片电阻 3K9 0603 5%	pc s	1.00000
07-080470-9900	贴片电阻 47 5% 0603	pc s	1.00000
07-080472-9900	贴片电阻 4K7 5% 0603	pc s	1.00000
07-080561-9900	贴片电阻 560 5% 0603	pc s	1.00000
07-080680-9900	贴片电阻 68 5% 0603	pc s	2.00000
07-080681-9900	贴片电阻 680 5% 0603	pc s	1.00000
07-080821-9900	贴片电阻 820R 5% 0603	pc s	3.00000
07-080822-9900	贴片电阻 8K2 5% 0603	pc s	1.00000
08-045470-0002	钽电容 B型 47UF/6.3V ±10%	pc s	9.00000
09-088104-1300	贴片电容 104/25V 0603 ±10%	pc s	16.00000
09-088105-1300	贴片电容 105/16V 0603 ±10%	pc s	9.00000
09-088220-1300	贴片电容 22P/50V 0603 ±5%	pc s	2.00000
09-088224-1300	贴片电容 224/25V 0603 ±10%	pc s	2.00000
09-088225-1300	贴片电容 225 10% 0603 10v	pc s	5.00000
09-088331-1300	贴片电容 330P/50V 0603 ±5%	pc s	4.00000
09-088684-1300	贴片电容 684/16V 0603 ±10%	pc s	2.00000
12-715819-0004	贴片二极管 5819 SOD-106	pc s	2.00000
11-003202-0500	IC MP3202 SOT-23-5	pc s	1.00000

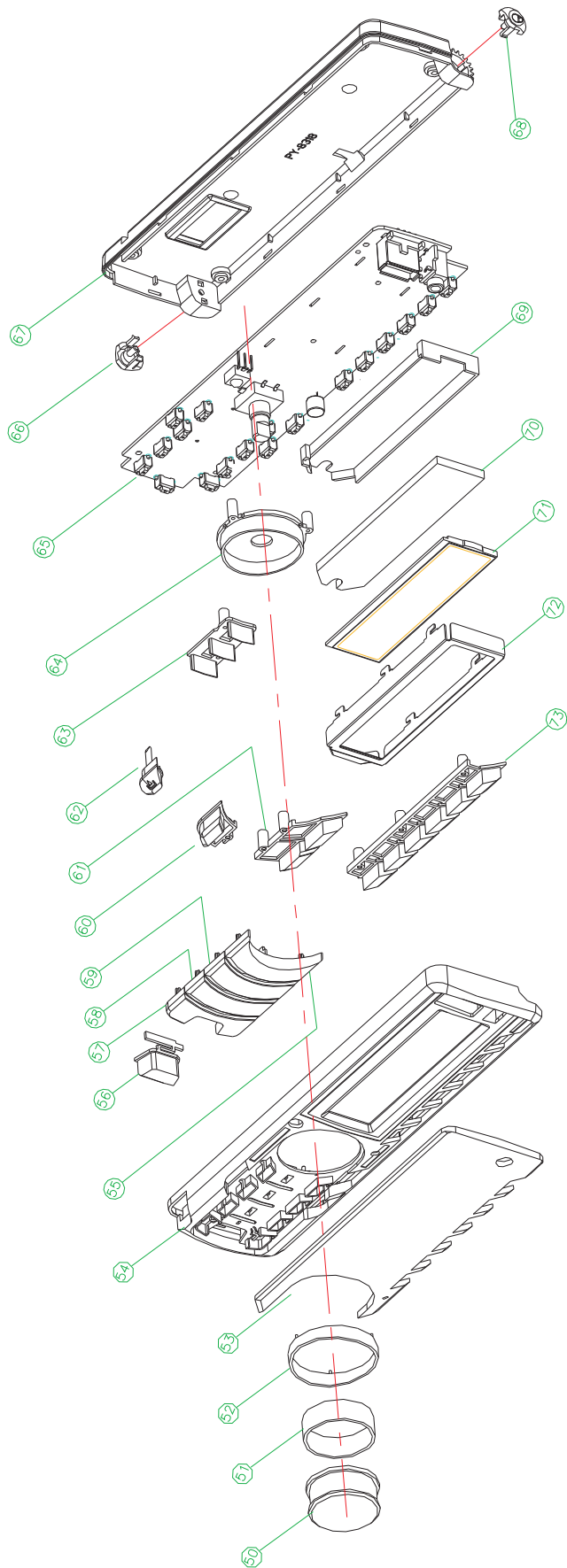
Electical Parts List

11-000118-0501	IC T118EL LQFP-64	pcs	1.00000
11-321117-0900	IC LD1117 (3.3V) TO-223	pcs	1.00000
11-411718-0000	IC TO-223, LD1117 (1.8V)	pcs	1.00000
12-300091-0021	贴片稳压二极管 9.1V (9.05V~9.20V) 1206	pcs	1.00000
16-0A1278-0000	贴片电感 0603 2.7uH	pcs	1.00000
16-A00000-1003	贴片磁珠 FB 0Ω 0603	pcs	3.00000
16-AA2000-0000	贴片磁珠 1206 FB320	pcs	5.00000
16-B00120-0001	贴片功率电感 12uH±20%	pcs	1.00000
16-B00470-0001	贴片功率电感 47uH±10% CD43 (SM 4532)	pcs	2.00000
17-020603-0207	贴片灯 3.3V LED 0603绿光	pcs	14.00000
34-010339-0800	贴片插座 39P 0.3MM (下接口) FPC0.3A-39XTA	pcs	1.00000
14-500600-0003	贴片按钮 5.0 (卷带封装)	pcs	13.00000
06-D9138D-2000-0A-N	连接板 PY-9288TM4-CONB (9138)	pcs	1.00000
06-D09138-2000	连接板 PY-9138D-CONB PCB, HP=1.2mm, FR-4 双面板	pcs	1.00000
19-116262-1201	26P插件插座(母插)	pcs	1.00000
29-726000-0709	FFC线 Flexible wire 26P L=70mm, a=1.0mm	pcs	1.00000

EXPLODED DRAWING



EXPLODED DRAWING



EXPLODED DRAWING INSTRUCTION

					42		SCREW		4
					41		BASE REFLECTOR	PMMA	1
					40	41-148198-0000	LEVER OPEN	POM	1
					39	68-008118-0100	GEAR		1
					38	41-158198-0000	GEAR		1
					37	44-078198-0100	RIGHT BRACKET		1
					36	43-029318-0120	BOTTOM COVER		1
					35		TRANSFORMER		1
					34	43-078198-0120	RIGHT SIDE	G.S.S	1
					33		SOCKET		1
					32		FAN		1
					31	43-088118-0120	SHORT SLEEVES		1
					30	43-076118-0110	LINE CLIP	POM	1
					29	59-085403-5021	SCREW		1
					28	59-012103-3004	SPRING WASHER		1
					27	59-022103-3018	SCREW		2
					26		SCREWS	G.S.S	6
					25	43-139318-2425	HEAT SINT	G.S.S	1
73	41-018318-000	KNOB-NUMBER		1	24		IC		1
72	44-078168-0000	LCD BRACKET		1	23		IC BRACKET		1
71		LCD		1	22	44-026118-0100	REAR DECK	G.S.S	1
70		LCD-REFLECTOR		1	21		DECK		1
69	41-728168-0000	LCD-BRACKET		1	20		ANT		1
68	41-178198-0000	ROTOR-RIGHT	ABS	1	19	43-068198-0110	LEFT SIDE	G.S.S	1
67	40-038318-0000	BOTTOM	ABS	1	18		PCB-SD-CARD		1
66	41-168198-0000	ROTOR-LEFT	ABS	1	17		MB		1
65		KB		1	16	44-016118-0000	BRACKET FRONT	G.S.S	1
64	41-348318-0000	VOL-REFLECTOR	ABS	1	15	59-012103-2604	SCREWS		11
63		KNOB-DECOTATION	ABS	1	14		PC SHEET		1
62	41-098318-0000	KNOB-RELEASE	ABS	1	13		CD WINDOW DOOR		1
61	41-088318-0000	KNOB-MU/MD	ABS	1	12		SCREWS		2
60	41-078318-0000	KNOB-DISP	ABS	1	11		SCREWS		4
59	41-058318-0000	KNOB-AMS/EQ	ABS	1	10	41-118198-0000	EJ KNOB	ABS	1
58	41-048318-0000	KNOB-LOD-LOC	ABS	1	8	59-022301-2008	SCREW		4
57	41-038318-0000	KNOB-MOD/BND	ABS	1	7	44-068198-0100	LEFT BRACKET	G.S.S	1
56	41-028318-0000	KNOB-POWER		1	6	41-796118-0000	LEVER OPEN	POM	1
55	41-068318-0000	KNOB-LOD/LOC	ABS	1	5	45-025400-0300	PUSH BLOSK SPRING	SECC	1
54	40-028318-0000	PANEL	ABS	1	4	42-018198-0100	SHAFT COPPER	COPPER	1
53	47-018318-0000	LENS	PMMA	1	3	45-405040-0300	LOCK SPRING		1
52	41-338318-0000	VOL-DECOTATION	ABS	1	2	41-786118-0000	LOCK	ABS	1
51	56-008318-0000	VOL-RUBBER	RUBBER	1	1	40-018168-0000	BASE	ABS	1
50	41-608318-0000	KNOB-VOL	ABS	QTY		40-046118-0000	TRIM PLATE	ABS	1
NO.	PART NUBER	DESCRIPTION	MATERIAL		NO.	PART NUBER	DESCRIPTION	MATERIAL	QTY

Mechanical Parts List

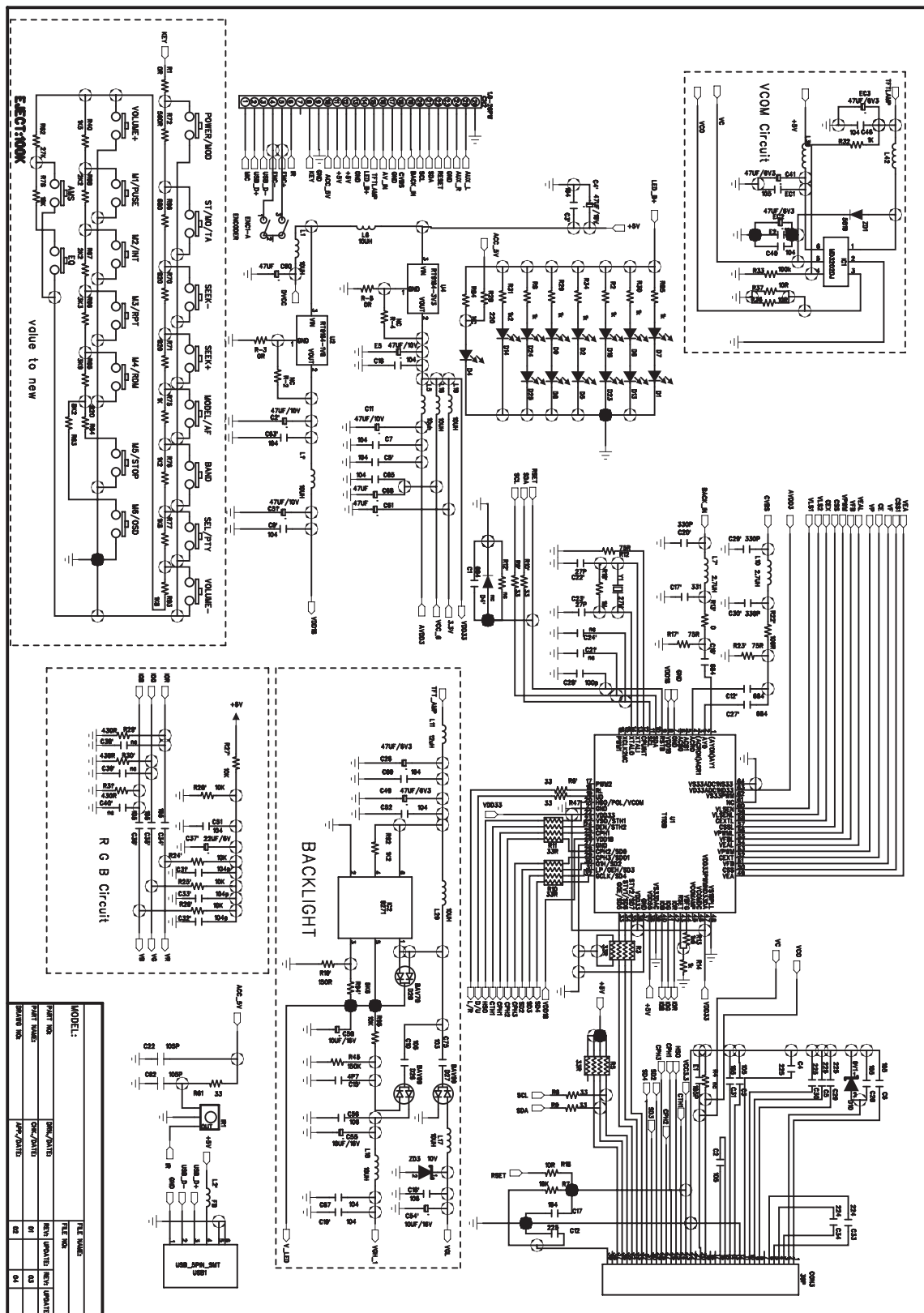
74-831801-1006	MP4遥控器 丝印(MYSTERY) (DVD价)	pc s	1.00000
90-8318M4-0101	PY-8318M4 主结构料 B1-2011-232A	pc s	1.00000
40-218198-0000	基座, ABS777D/BLACK 晒纹 (无碟口, 26PIN)	pc s	1.00000
40-048198-0001	装饰框 ABS 777D/黑色 喷黑油	pc s	1.00000
41-128198-0000	开关触杆 (LEVER SW)	pc s	1.00000
41-138198-0000	锁扣 (LOCKER)	pc s	1.00000
41-148198-0000	翻面推杆 (LEVER OPEN)	pc s	1.00000
41-158198-0000	齿轮 (GEAR)	pc s	1.00000
42-018198-0100	锁扣铜柱 $\Phi 2.0 \times 20.4$	pc s	1.00000
43-013118-0110	面盖 0.6MM G. S. S	pc s	1.00000
43-023118-0110	底盖 0.6MM G. S. S	pc s	1.00000
43-063128-0110	左侧架 0.8MM G. S. S	pc s	1.00000
43-073128-0110	右侧架 0.8MM G. S. S	pc s	1.00000
43-048118-0110	后支架A 1.0MM G. S. S. 耳插位在右	pc s	1.00000
43-812802-1000	散热片, 14PIN 压铸. 4X25W (M3用)	pc s	1.00000
44-038118-0100	RCA线夹 1.0MM G. S. S	pc s	1.00000
44-058138-0100	7384 IC支架 1.0MM G. S. S, 可插入PCB板	pc s	1.00000
44-068198-0100	左翻板支架	pc s	1.00000
44-078198-0100	右翻板支架	pc s	1.00000
45-500031-0200	锁扣弹簧 线径 $\Phi 0.2$	pc s	1.00000
45-502038-0600	翻面推杆弹簧 $\Phi 0.55$	pc s	1.00000
45-902034-0600	锁扣弹簧 $\Phi 0.6$	pc s	1.00000
46-060415-0400	E型介子 1.5*4*0.4	pc s	2.00000
56-173118-0004	主板快巴纸, 173*123.8*0.4MM	pc s	1.00000
59-022101-2003	机牙小盘头平尾螺丝 M2.0x3PMZh, 黑色	pc s	1.00000
59-012103-2603	机牙大盘头平尾螺丝 M2.6x3BZb, 白色	pc s	4.00000
59-012103-3010	机牙大盘头平尾螺丝M3x10BZb, 白色	pc s	4.00000
59-012103-3004	机牙大盘头平尾螺丝M3x4BZb 白色	pc s	2.00000
59-012106-3004	PS-T3*4三角牙 白色 大盘头三角尾自攻加硬	pc s	2.00000
59-022103-3013	SCREW M3x13PMNi (+) 小圆头 镀叻	pc s	2.00000
59-022301-2005	自攻主板固定螺丝2.0X5 黑色	pc s	4.00000
59-022301-2008	自攻锁紧螺丝PA2*8, 黑色	pc s	2.00000
68-008118-0100	阻力轮 60g	pc s	1.00000
71-028118-0000	防尘网, 黑色无纺布, 174*44*0.25T	pc s	1.00000

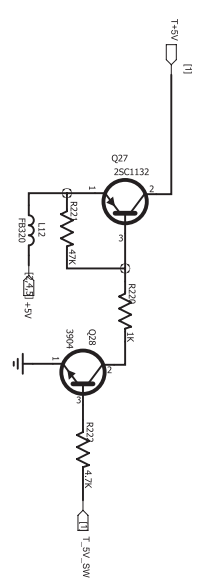
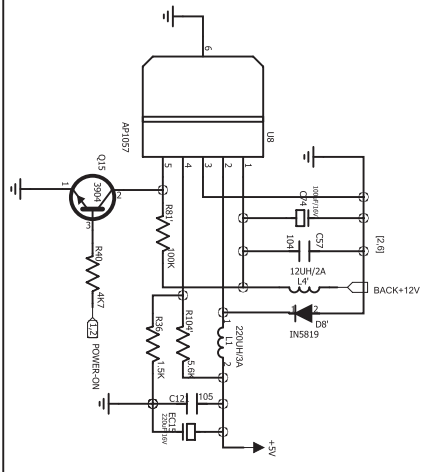
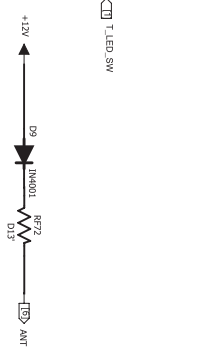
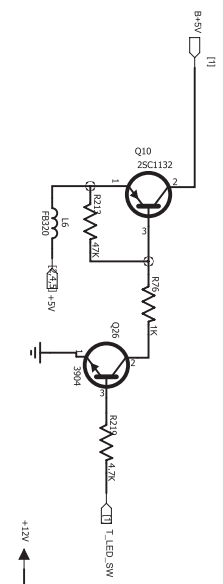
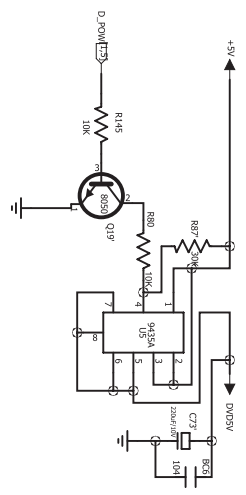
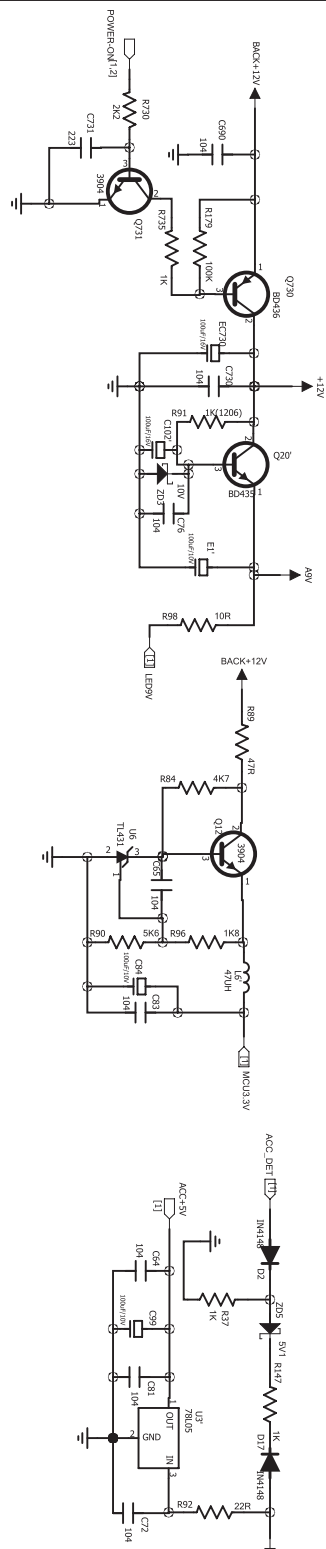
Mechanical Parts List

48-036168-1500	EVA前咀垫, 60度+3M胶 4*2T	pcs	2.00000
59-012106-2604	PS-T2.6*4三角牙 白色 大盘头三角尾自攻加硬	pcs	6.00000
90-8318M4-0201	PY-8318M4 前咀结构料 B1-2011-232A	pcs	1.00000
40-128318-0012	面壳 ABS777D/BLACK 面壳表面喷哑黑, 再丝印银字877C, 型号: MMR-313	pcs	1.00000
40-038318-0000	底壳(26PIN), ABS777D/BLACK, 晒纹	pcs	1.00000
47-058318-0001	镜片(带LOGO槽) ACRYLIC/CLEAR底面丝印银字877C再喷黑油AUX/IR 3.0寸屏	pcs	1.00000
57-900303-0142	MYSTERY 标牌, PVC, 黑底镂空银字, 14*3.5MM	pcs	1.00000
41-028318-0001	POWER钮, ABS/瓷白, 表面喷亮黑光刻光字	pcs	1.00000
41-038318-2001	快进/退钮 ABS/瓷白表面喷亮黑漆再光刻光字	pcs	1.00000
41-048318-2001	1/2钮 ABS/瓷白表面喷亮黑漆再光刻光字	pcs	1.00000
41-058318-2001	3/4钮 ABS/瓷白表面喷亮黑漆再光刻光字	pcs	1.00000
41-068318-2001	5/6钮 ABS/瓷白表面喷亮黑漆再光刻光字□/5/OSD/6	pcs	1.00000
41-088318-1001	AMS/MOD钮 ABS/瓷白表面喷亮黑再光刻光字	pcs	1.00000
41-108318-0001	BND/EQ钮 ABS/瓷白表面喷亮黑漆再光刻光字	pcs	1.00000
41-098318-0001	脱扣钮, ABS/瓷白, 表面喷哑黑	pcs	1.00000
41-308318-0001	音量钮装饰圈, ABS/瓷白, 水电镀光铬	pcs	1.00000
41-618318-0001	音量钮, ABS/NATURAL, 水电镀光铬	pcs	1.00000
41-628318-1001	音量钮装饰块, ABS/NATUR, 喷哑黑, CD放射纹	pcs	1.00000
41-338318-0001	发光装饰块, PMMA/CLEAR, 底部喷白油	pcs	1.00000
41-348318-0001	音量钮发光胶, PMMA/CLEAR, 底部喷白油	pcs	1.00000
41-168198-0000	左转轴, POM/BLACK	pcs	1.00000
41-178198-0000	右转轴, POM/BLACK	pcs	1.00000
45-010036-0300	出盒弹簧 线径φ0.3	pcs	1.00000
45-800056-0400	左右转轴弹弓, φ0.4	pcs	2.00000
56-066198-0000	USB盖, 硅胶, 硬度75	pcs	1.00000
56-008318-0001	音量钮橡胶圈	pcs	1.00000
59-022301-2010	自攻锁紧螺丝PA2*10, 黑色	pcs	4.00000
69-038118-2000	遥控头遮光EVA, 7X7X3mm, 内径φ4.5mm	pcs	1.00000
69-028118-2000	遥控头垫, EVA, 5*5*2mm, 单面背胶	pcs	1.00000
69-050050-4200	60度EVA, 双面粘3M胶, 5*5*4.2T	pcs	4.00000
90-8318M4-0301	PY-8318M4 包材 B1-2011-232A	pcs	1.00000
40-058118-0000	眼镜盒 PP/BLACK	pcs	1.00000
43-088118-0110	半截柜筒 0.6mm G.S.S	pcs	1.00000
44-048118-0100	钥匙 1.0mm G.S.S	pcs	2.00000
44-108118-0100	长巴 0.8mm G.S.S	pcs	1.00000
59-000000-0009	主机螺丝包	pcs	1.00000
60-B11232-01-01	俄文说明书, (内页用华劲80g书写纸, 封面用长鹤128g双铜, 共P) 型号: MMR-313	pcs	1.00000

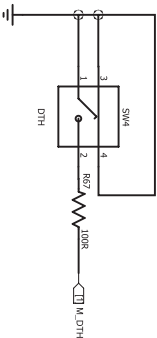
Mechanical Parts List

62-018198-0000	发泡胶	套	1.00000
62-058118-0001	眼镜盒胶袋 250x89mm	pcs	1.00000
62-058118-0003	主机胶袋, 五国语言警示语 317x304mm. AKITA专用	pcs	1.00000
62-058118-0004	螺丝, 垫片, 钥匙胶袋 140x85mm	pcs	1.00000
69-400200-1000	眼镜盒海绵, 黑色海绵, 40X20X10MM, 单面背胶	pcs	4.00000
62-058118-0005	输出线胶袋 200*80mm	pcs	3.00000
62-058118-0006	说明书胶袋 225*165MM (带封口条)	pcs	1.00000
63-018118-0903	1A FUSE LABEL WHTE/BLK (28*8MM)	pcs	1.00000
63-018118-0904	15A FUSE LABEL WHTE/BLK (28*8MM)	pcs	1.00000
63-058118-0901	QC PASSED LABEL 白底黑字 (10MM)	pcs	1.00000
63-188118-0101	LINE OUT FRONT L CH (二组RCA时用)	pcs	1.00000
63-188118-0102	LINE OUT FRONT R CH (二组RCA时用)	pcs	1.00000
63-198118-0801	LINE OUT REAR R CH (二组RCA时用)	pcs	1.00000
63-198118-0802	LINE OUT REAR L CH (二组RCA时用)	pcs	1.00000
63-168118-0801	VIDEO OUTPUT 灰底白字	pcs	1.00000
63-029138-0202	BACK VIEW IN 黑底白字	pcs	1.00000
63-B11232-01-01	机面贴纸, 型号:MMR-313	pcs	1.00000
63-278118-1001	PUSH TO EJECT RED/WHITE, SD卡口贴纸	pcs	1.00000
63-B11232-01-02	流水号贴纸, 一式五联	套	1.00000
64-B11232-01-01	保修卡 (128g双铜) 型号: MMR-313	pcs	1.00000
63-D07037-0103	VIH系列贴纸 (每次版本不同, 请每次自行更新)	pcs	4.00000
63-090000-01-02	安全封条 (通用)	pcs	0.40000
63-B11232-0001	MMR 说明书贴纸48.6*25MM	pcs	1.00000
63-B11232-0002	MMR 彩盒贴纸48.6X25mm	pcs	1.00000
65-B11232-01-01	卡通箱 (扣底上开盖) B=B 5pcs (445X241X270mm) 型号:MMR-313	pcs	0.20000
66-B11232-01-01	彩盒 (扣底上开盖) 227x85x250MM (250g裱B9加强坑磨光) 型号:MMR-313	pcs	1.00000



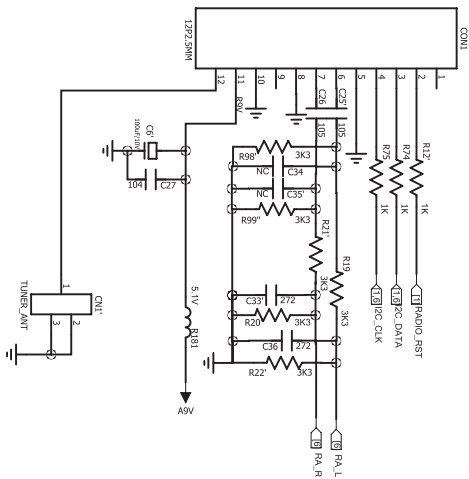


培英科技
项目: 3寸 (MP4+主板)
版本: 1.0
设计:
日期: 2011-09-23
页面: 8 之 2--POWER

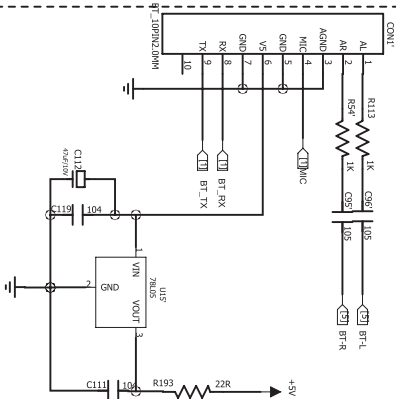


项目:	3寸 (MP4+主板)
版本:	1.0
设计:	giant
日期:	2011-09-23
页面:	8 之 6--马达驱动/TV

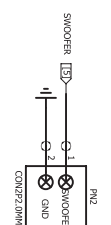
收音部分线路



带蓝牙贴上



培英科技	
项目:	3-in-1 (MP4+主板)
版本:	1.0
设计:	giant
日期:	2011-09-23
页面:	8 之 3--RADIO

31

