

SERVICE MANUAL



POWERED SUBWOOFER

CONTENTS

PARTS LIST:

CPU PCB ASSEMBLY	2-3
LED INDICATORS PCB ASSEMBLY	4
RCA PCB ASSEMBLY	4
RF REMOTE PCB ASSEMBLY	5
PRE AMP PCB ASSEMBLY	5-8
SWITCHED MODE PSU CIRCUIT PCB ASSEMBLY	9-14
12" SPEAKER ASSEMBLY	14
POWER CORD CABLE ASSEMBLY	14
BLOCK DIAGRAM	15
SCHEMATIC DIAGRAMS	16-20
PCB LAYOUT	21-24
EXPLODED VIEW DIAGRAMS	25-26

PARTS LIST

CPU SECTION PRINTED CIRCUIT BOARD ASSEMBLY

QTY	PART NO	DESCRIPTION	LOCATION
1	150F-101K-5-IEA	CC 50V 100pF 10% RL 5X3	C206
14	150F-104M-N-FD	CC 50V 0.1U 20% RLF	C202, 203, 210, 211, 212, 213, 214, 215, 216, 217, 218, 221, 222, 234
1	150F-224M-5-JJA	CC 50V 0.22U 20% RLF	C208
2	153H-104K-5-QUA	CM 100V 0.1U 10% RL	C237,238
1	157C-108M-5-05A	CE 10V 1000U 20% RL 8x16	C235
1	157D-476M-5-IU	CE 16V 47U 20% RL 5x11	C236
6	157D-477M-5-OVK	CE 16V 470U 20% RL	C201, 223, 223, 225, 226, 227
2	157E-228M-5-X9	CE 25V 2200U 20% RL	C219,220
1	157F-105M-5-IU	CE 50V 1U 20% RL 5x11	C239
1	4711-391A-C	RMF 1/8W 390R 1% ATS	R228
3	4711-102A-2	RMF 1/8W 1K 1% AT	R208,212,215
3	4711-122A-2	RMF 1/8W 1.2K 1%	R205,216,217
1	4711-472A-C	RMF 1/8W 4.7K 1% ATS	R209
1	4711-822A-2	RMF 1/8W 8.2K 1% AT	R211
3	4711-103A-2	RMF 1/8W 10K 1% AT	R210,226,227
7	4711-104A-2	RMF 1/8W 100K 1% AT	R204, 220, 221, 222, 223, 224, 225
1	4701-105J-2	RCF 1/8W 1M 5% AT	R206
1	4705-100J-2	RCF 1/4W 10R 5% AT	R229
1	4804-0010-2	DIODE 1N4001 AT	D203
1	4840-8060-2	DIODE 1N4148 NS	D201
1	4840-8060-2	DIODE 1N4148 NS	D202
3	1660-0900-0	OIL SLEEVE ID=0.5MM	C237,238,RF201
1	1660-0930-0	SHRINKAGE TUBE ID=3MM UL	CN212
1	1681-0000-A	UL1007 AWG#18 BLACK	GND
1	1681-1000-A	UL1007 AWG#20 BLACK	ANT
1	1681-4000-A	UL1007 AWG#26 BLACK	CN212

PARTS LIST

CPU SECTION PRINTED CIRCUIT BOARD ASSEMBLY CONTINUED

QTY	PART NO	DESCRIPTION	LOCATION
4	1801-220K-M	COIL 22UH 10% AL BL7	L201,202,203,208
1	1806-2374-0	TT-9974 TOROIDAL CHOKE T	L209
3	1808-0670-0	FERRITE BEAD 26430000101	FB201,203,204
2	1808-0680-0	FERRITE BEAD INDUCTOR	FB201,202
1	2101-3000-0	HEADER IDC 20 PIN 3510	CN202
3	2101-9120-0	JM24182-2P WAFER	CN208,210,211
1	2101-9130-0	JM24182-4P WAFER	CN203
2	2101-9190-0	JM24182-5P WAFER	CN209,212
1	2101-9320-0	WAFER JM24182-11P	CN201
1	2703-0150-1	CR4.00MHE,CSTLS4M00G55-	XTAL201
3	3130-5800-0	IC TA7291S BRIDGE DRIVER	IC203,204,205
1	3131-6140-0	IC BA4560 ROHM	IC206
1	3131-7640-1	IC KS86P4208 SM SAMSUNG	IC201
1	3131-7740-0	EEPROM AT24C02-10PI	IC202
1	4152-6890-0	RUBBER PAD 2617-19-0 W/B	RF201
1	4500-0500-0	RELAY DPDT 5V 40mA	RLY201
1	4860-8470-0	TR TIP 41C SGS	Q205
1	4860-8710-5	TR 9012H	Q202
4	4860-8720-5	TR 9013H SAMSUNG	Q203,204,207,208
1	5200-3281-0-06	SW COMAX	SW202
1	5200-4801-0	SW TACT X2 KPT-2105B	SW201
1	7012-6308-0	CABLE ASSY 8 POS L=400MM	CN204
1	7012-6390-0	CONN WIRE UL1533 #26 BR	CN207/CN3
1	8912-0028-0	RF RECEIVER 433MHZ FSK	RF201
1	1725-602A-0001	PCB CPU PSW4000 D/S	REV:E

PARTS LIST

LED INDICATORS PRINTED CIRCUIT BOARD ASSEMBLY

QTY	PART NO	DESCRIPTION	LOCATION
1	157C-107M-5-IU	CE 10V 100uF 20% RL 5x11	C301
1	1681-4000-A	UL1007 AWG#26 BLACK	G TO G
1	3700-4536-RG	L-115W EGW/209EGW RED/GR	LED301
1	3700-9528-0	LED DISP LR2x5-10B-YYB	LED302
2	4860-8710-5	TR 9012H	Q307,310
8	4860-8720-5	TR 9013H SAMSUNG	Q301, 302, 303, 304, 305, 306, 308, 309
1	1725-546A-0001	LED PCB FC3T0C 94HB	REV:E

RCA SECTION PRINTED CIRCUIT BOARD ASSEMBLY

QTY	PART NO	DESCRIPTION	LOCATION
9	150F-101K-5-IEA	CC 50V 100P 10% RL 5X3	C601, 602, 603, 604, 605, 606, 607, 608, 609
1	157D-476M-5-IU	CE 16V 47U 20% RL 5x11	C612
1	157F-225M-5-IU	CE 50V 2.2U 20% RL 5x11	C610
1	157Q-477M-5-S5T	CE 35V 470U 20% RL 10X16	C613
1	2101-9120-0	JM24182-2P WAFER	CN605
1	2101-9150-0	JM24182-6P WAFER	CN601
1	2113-1169-1	1P RCA JACK BK AU HQ032-	RCA603
3	2113-1294-0	DIN SOCKET JY-5033-030GD	XLR601,602,603
1	2113-1950-0	1P RCA JACK WHITE COLOR	RCA601
1	2113-1951-0	1P RCA JACK RED COLOR	RCA602
1	3130-6360-0	IC 7905 -5V REG 1.5A	Q601
3	3131-6140-0	IC BA4560 ROHM	U601,602,603
1	7011-6720-0	UL1007 #18 500MM W/FUSE	GND601
1	7012-6387-0	CONN WIRE UL1533 #26 BR	CN603/PRE
1	7012-6388-0	CONN WIRE ASSY L=150MM	CN602/CPU
1	7012-6391-0	CONN WIRE UL1533 #26 BR	CN604/CN601
1	1725-601A-0000	PCB RCA PSW4000 S/S	REV:E

PARTS LIST

RF REMOTE PRINTED CIRCUIT BOARD ASSEMBLY

QTY	PART NO	DESCRIPTION	LOCATION
1	150F-104M-N-FD	CC 50V 0.1U 20% RLF	C1
1	157E-106M-5-GMK	CE 25V 10U 20% RL 4X7	C2
1	2703-0150-1	CR4.00MHE,CSTLS4M00G55-	XTAL1
1	3131-8250-0	IC KSP86P4208 28P SMD	IC1
1	4860-8710-5	TR 9012H	Q1
1	4860-8720-5	TR 9013H SAMSUNG	Q2
1	8912-0027-0	RF TRANSMITTE 433MHZ FS	RFD1
1	1725-655A-0000	PCB REMOTE PSW4000 S/S	REV:B

PRE AMP SECTION PRINTED CIRCUIT BOARD ASSEMBLY

QTY	PART NO	DESCRIPTION	LOCATION
1	157C-108M-5-05A	CE 10V 1000U 20% RL 8x16	C3
6	150F-471K-5-IEA	CC 50V 470P 10% RL 5x3	C702, 706, 802, 806, 902, 906
3	157F-105M-5-IU	CE 50V 1U 20% RL 5x11	C705,805,905
3	157F-476M-5-OW	CE 50V 47U 20% RL 8x12	C1,2,79
12	153I-104J-9-NL	CM 63V 0.1U 5% RB 7.5x6	C78, 10, 19, 20, 38, 41, 50, 51, 85, 86, 91, 92
7	153I-105J-9-NO	CM 63V 1U 5% RB 7.5x8	C43,45,52,701,801,88,901
1	153I-154K-9-NO	CM 63V 0.15U 10% RB 7.5	C25
8	153I-224J-9-NL	CM 63V 0.22U 5% RB 7.5x	C105, 4, 48, 5, 6, 7, 84, 90, 104, 100
1	153I-333J-9-NL	CM 63V 0.033U 5% RB 7.5	C104
4	153I-334K-9-MRM	CM 63V 0.33U 10% RB 7x9	C100,101,102,103
1	153I-473J-9-NL	CM 63V 0.047U 5% RB 7.5	C87
4	153I-683J-9-NL	CM 63V 0.068U 5% RB 7.5	C39,40,49,76
2	153H-684M-9-NVU	CM 100V 0.68U 20% RB	C15,27
1	153H-684M-9-NVU	CM 100V 0.68U 20% RB	C27

PARTS LIST

PRE AMP SECTION PRINTED CIRCUIT BOARD ASSEMBLY CONTINUED

QTY	PART NO	DESCRIPTION	LOCATION
2	4701-244J-C	1/8W +-5% 240K OHM	R60,157
2	4705-133J-2	RCF 1/4W 13K 5% AT	R20,21
2	4705-364J-1	RCF 1/4W 360K 5% AL	R709,709
6	4711-101A-2	RMF 1/8W 100R 1% AT	R704, 706, 804, 806, 904, 906
7	4711-102A-2	RMF 1/8W 1K 1% AT	R189, 725, 729, 825, 829, 925, 929
58	4711-103A-2	RMF 1/8W 10K 1% AT	R10, 11, 111, 112, 113, 115, 117, 12, 120, 122, 13, 14, 159, R160, 164, 168, 169, 170, 171, 187, 44, 47, 50, 51, 708, 710, 711, 712, 714, 717, 720, 721, 726, 727, 808, 810, 811, 812, 814, 815, 817, 820, 821, 826, 827, 829, 908, 912, 914, 915, 917, 920, 921, 926, 927, 18, 177
3	4711-104A-2	RMF 100K 1/8W 1% AT	R703,803,903
1	4711-124A-2	RMF 1/8W 120K 1% AT	R909
12	4711-153A-2	RMF 1/8W 15K 1% AT	R110, 112, 116, 118, 121, 123, 702, 802, 82, 83, 824, 902
4	4711-154A-2	RMF 1/8W 150K 1% AT	R30,718,818,918
1	4711-162A-2	RMF 1/8W 1.6K 1% AT	R924
4	4711-163A-2	RMF 1/8W 16K 1% AT	R16,17,24,25
2	4711-183A-C	RMF 1/8W 18K 1% ATS	R35,135

PARTS LIST

PRE AMP SECTION PRINTED CIRCUIT BOARD ASSEMBLY CONTINUED

QTY	PART NO	DESCRIPTION	LOCATION
10	4711-203A-2	RMF 1/8W 20K 1% AT	R52, 63, 134, 163, 705, 707, 805, 807, 905, 907
2	4711-221A-2	RMF 1/8W 220R 1% AT	R61,64
1	4711-222A-C	RMF 1/8W 2.2K 1% ATS	R913
8	4711-223A-2	RMF 1/8W 22K 1% AT	R102, 103, 104, 179, 19, 75, 76, 86,
1	4711-243A-2	RMF 1/8W 24K 1% AT	R724
2	4711-272A-2	RMF 1/8W 2.7K 1% AT	R713,916
3	4711-303A-2	RMF 1/8W 30K 1% AT	R77,78,79
1	4711-332A-2	RMF 1/8W 3.3K 1% AT	R185
1	4711-334A-2	RMF 1/8W 330K 1% AT	R184
1	4711-362A-2	RMF 1/8W 3.6K 1% AT	R813
1	4711-363A-2	RMF 1/8W 36K 1% AT	R36
2	4711-392A-2	RMF 1/8W 3.9K 1% AT	R186,188
3	4711-472A-C	RMF 1/8W 4.7K 1% ATS	R22,23,158
2	4711-473A-C	RMF 1/8W 47K 1% ATS	R701,801
4	4711-512A-2	RMF 1/8W 5.1K 1% AT	R62,728,828,928
2	4711-682A-2	RMF 1/8W 6.8K 1% AT	R716,816
2	4711-752A-2	RMF 1/8W 7.5K 1% AT	R81,84
1	4711-753A-2	RMF 1/8W 75K 1% AT	R29
3	4715-101A-2	RMF 1/4W 100R 1% AT	R7,161,162
4	4715-102A-2	RMF 1/4W 1K 1% AT	R3,109,114,119
1	4715-303A-2	RMF 1/4W 30K 1% AT	R80
1	4715-333A-2	RMF 1/4W 33k 1% AT	R166
7	4715-334A-2	RMF 1/4W 330K 1% AT	R1,70,71,72,73,85,165
3	4715-472A-2	RMF 1/4W 4.7K 1% AT	R4,5,167
1	4715-473A-2	RMF 1/4W 47K 1% AT	R2
3	4715-514A-2	RMF 1/4W 510K 1% AT	R719,819,919
2	4804-0070-2	DIODE IN4007 AT	D1,2

PARTS LIST

PRE AMP SECTION PRINTED CIRCUIT BOARD ASSEMBLY CONTINUED

QTY	PART NO	DESCRIPTION	LOCATION
1	4804-4480-2	DIODE IN4448 HIGH CONDUCT	D3
27	4840-8060-2	DIODE 1N4148 NS	D11, 12, 13, 14, 15, 16, 17, 18, 19, 20, 21, 22, 701, 702, 703
27	15CG-101J-7-IJ	CTC 0/30 100pF 5% RM	C106, 11, 37, 42, 44, 46, 53, 54, 55, 57, 58, 59, 60, 66, 68, 69, 70, 71, 72, 74, 703, 81, 82, 83, 803, 89, 903
1	2101-3000-0	HEADER IDC 20 PIN 3510	PL1
5	2101-9120-0	JM24182-2P WAFER	CN1,2,3,4,5
1	3130-5601-0	IC LM833N NS	U18
3	3130-9150-0	IC LM3080N OTA NATIONAL	U701,801,901
7	3131-6070-0	IC LF 347 NS	U3,9,10,11,12,15,16
4	3131-6140-0	IC BA4560 ROHM	U19,704,804,904
6	3131-7220-0	IC TL062 LOW POWER JFET	U702, 703, 802, 803, 902, 903
2	4500-0490-0	RELAY 2P2T 12V 140MM	RL1, RL2
4	4718-431J-C-X	RMF 1W 430R 5% ATS METAL	R180,181,182,183,
1	4751-0276-0	VR 50K BX4 & 10K BX1 L=20	RV1
1	4751-0286-0	VR 10K BX2 L=20mm W/MOTOR	RV3
1	4751-0296-0	VR 100K AX2 & 10K BX2 L=20	RV2
1	4756-1046-3-17	SVR B100K H3 VZ067TL7B	TP902
1	4756-2036-3-15	SVR B20K H3 VZ067TL7B	TP901
3	4860-1260-5	TR 2N3906 SAMSUNG RL	Q701,801,901
1	5200-3281-0-06	SW COMAX	SW2
1	5200-4821-0	SWITCH TOGGLE 1P2T	SW1
1	1725-600A-0000	PCB PRE PSW4000 D/S	REV:G

PARTS LIST

SWITCHED MODE PSU CIRCUIT PRINTED CIRCUIT BOARD ASSEMBLY

QTY	PART NO	DESCRIPTION	LOCATION
12	150F-104M-N-FD	CC 50V 0.1U 20% RLF	C410, 414, 416, 419, 423, 426, 436, 437, 438, 443, 447, 448
2	150F-151K-5-LFA	CC 50V 150P 10% RL	C427, 428
1	150N-101K-5-MHA	CC 1KV 100PF 10% RL	C407
1	150N-102K-5-II	CC 1KV 1000PF 10% RL Y5	C412
1	150N-103M-5-SS	CC 1KV 0.01u 20% RL	C409
2	150N-471K-5-MHA	CC 1KV 470PF 10% RL	C433, 434
2	150R-332M+5-1OA	CC 250V 3300P 20% RL DE	C403, 404
1	153H-102K+5-INA	CM 100V 0.001UF 10% RL	C446
2	153H-103K+5-KNA	CM 100V 0.01UF 10% RL	C440, 442
1	153H-222K-5-GL	CM 100V 0.0022U 10% RL	C441
1	153H-332J-5-IQ	CM 100V 0.0033UF 5% RL	C439
1	153R-104K+5-4U	CM 250V 0.1u 10% RL 15.	C432
1	153T-334K+5-=W	CM 400V 0.33uF 10% QXF2	C408
2	153Z-334M-5-YUM	CM 275V 0.33UF 20% RL	C401, 402
1	157D-476M-5-IU	CE 16V 47uF 20% RL 5x11	C411
1	157F-107M+5-OW	CE 50V 100uF 20% RL 8x1	C435
1	157F-107M+5-OW	CE 50V 100uF 20% RL 8x1	C445
1	157F-225M+5-IU	CE 50V 2.2uF 20% RL 5x1	C444
3	157H-108M-5-7^T	CE 100V 1000uF 20% 105C	C429, 430, 431
6	157Q-477M+5-S9T	CE 35V 470U 20% RL	C415, 418, 421, 422, 424, 425
2	157R-567M-5-#\$T	CE 250V 560UF 20% RL 10	C405, 406
18	1660-0900-0	OIL SLEEVE ID=0.5MM	D408, D410, D411, D422, JP412, R412, R419, R420, R421, R425, R426, R429, R432, R436, R438, R439, R447, Z405
1	1660-0940-0	SHRINKAGE TUBE ID=9MM U	G401
1	1681-2010-D	UL1672 AWG#22 BROWN	+18V/+18V
1	1681-2061-D	UL1672 AWG#22 BLUE	CPU/CPU
1	1681-4000-A	UL1007 AWG#26 BLACK	G-G
1	1725-603A-0000	PCB SMPS PSW4000 S/S	PCB

PARTS LIST

SWITCHED MODE PSU CIRCUIT PRINTED CIRCUIT BOARD ASSEMBLY CONTINUED

QTY	PART NO	DESCRIPTION	LOCATION
1	1806-2372-0	TT-9972 GATE DRIVER TRA	T404
1	1806-2380-0	CURRENT TRANSFORMER	T403
1	1806-3574+0000	TRANSFORMER PWR 300V	T405
1	1806-3575+0000	CHOKER COIL 410UH 20% 5A	L409
1	1806-3576+0000	TRANSFORMER SW EC28	T402
1	1806-3577+0000	CHOKER COIL 3.3UH 20%	L407
1	1806-3582+0000	CHOKER-COMMON MODE	L403
1	1806-3588-0	X-TRANSFORMER EI35 XG	T401
1	1806-3609-0	COMMON MODE EE-35B	L401
8	1808-0670-0	FERRITE BEAD 2643000010	D417, 418, 419, 420, Q401, Q402, Q403, Q404
1	1808-9030-0	ARRESTER 230V DC 5KA M2	G401
2	1808-9080-0	FERR BEAD 43120203106 1	FB401, 402
3	2600-3005-0803	METAL WASHER M3X0.5X8MM	U401, 405, 406
1	2601-2608-0601	FIBRE WASHER M2.6 0.8T	U401
3	2607-3009-0553	SPRING WASHER M3X0.9X5.	U401, 405, 406
3	2904-3008-3000	SCREW M3X8 (BLK)	U401, 405, 406
2	2950-3008-0020	SCREW B-TITE PH M3X 8 M	D417-D420, Q401-Q404
1	2954-2606-0000	SCREWS BT 2.6X6	U401
4	3100-8040+0	MICA T-400 8302 18X12.7	D417, 418, 419, 420
4	3100-8050-0	MICA T-400 T03P 25X20M	Q401, 402, 403, 404
1	3130-2020-2	IC 7805 REG 5V	U405
1	3130-2790-1	IC NJM7808FA +8V REG	U406
1	3131-5550-0	IC KA3842B SAMSUNG	U407
1	3131-8200-0	IC TOP246Y 60W TOPSWITC	U401
6	4132-1551-0	TERMINAL OUT PUT	CN401, 402, 403, 404, 409, 410
4	4154-0841+0	INSULATION BUSHING	D417, 418, 419, 420
4	4154-0841+0	INSULATION BUSHING	Q401, 402, 403, 404
2	4705-102J-2	RCF 1/4W 1K 5% AT	R418, 432
3	4705-103J-2	RCF 1/4W 10K 5% AT	R425, 426, 447
1	4705-125J-C-M	RCF 1/4W 1.2M 5% ATS	R412

PARTS LIST

SWITCHED MODE PSU CIRCUIT PRINTED CIRCUIT BOARD ASSEMBLY CONTINUED

QTY	PART NO	DESCRIPTION	LOCATION
2	4705-912J-C-M	RCF 1/4W 9.1K 5% ATS	R438, 439
2	4715-472J-2	RMF 1/4W 4.7K 5% AT	R421, 429
1	4715-511A-2	RMF 1/4W 510R 1% AT	R414
1	4715-6R8A-C-X	RMF 1/4W 6R8 1% ATS	R413
1	4719-101J-C-X	RMF 2W 100R 5% ATS META	R410
2	4719-470J+C-X	RMF 2W 47R 5% ATS METAL	R419, 420
1	471A-683J-C-X	RMF 3W 68K 5% ATS METAL	R436
1	4756-2026-3-05	SVR B2K H3 NVZ6TL1 HDK	TP401
1	4804-0010-2	DIODE 1N4001 AT	D422
3	4840-1910-2	RECT BYM26C 2A 600V AVA	D408, D410, D411
1	4840-8240+0	DIODE BR108 BRIDGE RECT	BG401
2	4840-8620-0	DIODE SCHOTTKY 3.3A 100	D412, 413
4	4840-8860-1	DIODE 600V 15A T0220	D417, 418, 419, 420
1	485L-431C-5	TRA TL431CLP TI/MOT	U404
1	4860-2390-5	TR 2N3906 NS	Q406
2	4860-8860-0	TR 2N3904 SAMSUNG HEF85	Q405, 407
4	4860-8950-0	TR FET IRF840 (IR)	Q401, 402, 403, 404
1	5202-0001-0	NTC THERMISTER SCK057	NTC401
1	5400-1702-0	HEATSINK 23.5X17X50	U401
1	5400-3611+0	HEATSINK PSW4000	U405/U406
2	5400-9320+0	2617-4-B HEAT SINK	D417, Q401
3	635L-0002-0	WJ ROLLER FORM D=0.8MM	JP401, 402, 410
1	7010-0160-0	CN ASSY UL1007 #20 L=12	JPW402
1	7012-6355-0	CONN WIRE UL1007 #20 BR	JPW401
1	7012-6385-0	CONN WIRE UL1007 #26 BE	CN408
1	7012-6392-0	CONN WIRE UL1007 #26 RD	CN406
1	7012-6393-0	CONN WIRE UL1007 #26	CN405/CN203
1	7012-6394-0	CONN WIRE UL1007 #26	CN407/CN209
2	8900-9550-0	OPTOCOUPLER CNY17G-2	U402, 403
2	8910-0144-0	CE 25V 470UF 20% RL 105	C417, 420
1	8910-0189-0	P6KE200A VOLTAGE SUPPRE	Z405

PARTS LIST

SWITCHED MODE PSU CIRCUIT PRINTED CIRCUIT BOARD ASSEMBLY CONTINUED

QTY	PART NO	DESCRIPTION	LOCATION
4	4705-102J-2	RCF 1/4W 1K 5% AT	R406, 409, 427, 446
1	4705-104J+2	RCF 1/4W 100K 5% AT	R437
1	4705-125J-C-M	RCF 1/4W 1.2M 5% AT	R411
2	4705-152J+2	RCF 1/4W 1.5K 5% AT	R434, 435
1	4705-203J+2	RCF 1/4W 20K 5% AT	R422
1	4705-204J+2	RCF 1/4W 200K 5% AT	R428
1	4705-220J+2	RCF 1/4W 22R 5% AT	R445
1	4705-274J-1	RCF 1/4W 270K 5% AL	R433
1	4705-471J+2	RCF 1/4W 470R 5% AT	R431
1	4705-473J+2	RCF 1/4W 47K 5% AT	R423
4	4705-510J+2	RCF 1/4W 51R 5% AT	R404, 405, 407, 408
2	4705-821J-2	RCF 1/4W 820R 5% AT	R424, 430
2	4707-104J+2	RCF 1/2W 100K 5% AT	R402, 403
1	4707-474J+2	RCF 1/2W 470K 5% AT	R401
1	4715-201A-2	RMF 1/4W 200R 1% AT	R415
1	4715-271A-2	RMF 1/4W 270R 1% AT	R444
1	4715-333A-2	RMF 1/4W 33k 1% AT	R416
1	4715-682A-2	RMF 1/4W 6.8K 1% AT	R417
5	4804-0010-2	DIODE 1N4001 AT	D403, 404, 405, 406, 407
4	4837-18V6-2	DZ 1/2W 18V TEMIC AT	Z401, 402, 403, 404
1	4837-5106-2	DZ 1/2W 51V TEMIC AT	Z406
7	4840-8060-2	DIODE 1N4148 NS	D414, 423, 425, 426, 427, 428, 429
3	4840-8520-2	RECTIFIER UF4003-E3/54	D409, 421, 424
2	4840-8530-2	RECTIFIER UF4006-E3/54	D401, 402
7	635L-0002-0	WJ ROLLER FORM D=0.8MM	JP403, 404, 409, 419, 420, 422, 423
10	635N-0002+0	WJ ROLLER FORM D=0.6MM	JP405, 406, 407, 413, 414, 415, 416, 417, 418, 421
1	1404-1401+0	SWITCH POWERTOP COVER A	BOTTOM

PARTS LIST

SWITCHED MODE PSU CIRCUIT PRINTED CIRCUIT BOARD ASSEMBLY CONTINUED

QTY	PART NO	DESCRIPTION	LOCATION
1	1404-1511+1	COVER-TOP AL PAINTING BK	BOTTOM
1	1404-1601+1	SWITCH POWER BOTTOM	TOP COVER
2	1660-0470-0	SHRINKAGE TUBE ID=8	IEC401, SW402
2	1660-0870-0	SHRINKAGE TUBE ID=4MM UL	F401, SW401
1	1661-0900-0	SHRINKAGE TUBE ID=14MM	RING T'NAL
2	1681-0020-A	UL1007 AWG#18 RED	IEC401, SW402
1	1806-2375-0	TT-9975 EARTH TOROIDAL C	L410
1	1806-3578+0000	TRANSFORMER CHOKE EI48	L404
1	2113-1144-0	AC INLET	IEC401
1	2113-9535+0	HALO BUSHING 0813C	BOTTOM COVER
3	2600-3005-0803	METAL WASHER M3X0.5X8MM	CABLE CLAMP, FAN401, L404
2	2606-4008-0853	INT TOOTH WASHER M4X0.8X	RING T'NAL, L410
2	2607-3009-0550	SPRING WASHER M3X0.9X5.5	U405, 406
5	2607-3009-0553	SPRING WASHER M3X0.9X5.5	CABLE CLAMP, FAN401, L404, IEC401, PCB
2	2607-4010-0704	SPRING WASHER M4X1X7MM N	RING T'NAL, L410
2	2640-3022-0544	M3 NUT NI	IEC401, L404
2	2640-4030-0704	NUT HEX M4	CN409, L410
4	2900-3010-3000	SCREW PH M3X 10 MM BZ CR	IEC401, L404, PCB, SW401
2	2900-3010-3030	SCREW M3X10 W/S&F	L404, PCB
2	2904-3008-3000	SCREW M3X8 (BLK)	U405, 406
1	2951-3010-3000	SCREW B-TITE FLAT-CS M3X	SMPS BOTTOM
2	2954-3012-3000	3X12MM B-TITE (BLK.ZN)	CABLE CLAMP, FAN401
1	4133-9370-0	RING T'NAL 04RNB14-5	BOTTOM
1	4153-1100+0	FUSE HOLDER FH-B02 EDK	F401
2	4153-3631-0	GASKET FOR TOP TO BOTTOM	L404, PCB
1	5120-9001-0	CERAMIC 5X20MM FUSE 250V	F401
1	5200-4825-0	SW AC SELECTOR 2P2T	SW401
1	5200-4826+0	ROCKER POWER SWITCH SPST	SW402

PARTS LIST

SWITCHED MODE PSU CIRCUIT PRINTED CIRCUIT BOARD ASSEMBLY CONTINUED

QTY	PART NO	DESCRIPTION	LOCATION
8	6360-0011-0	PLASTIC CABLE TIE 97MM	CPU +18V, CN407, CPU CN406, FAN401, IEC401, L408, SW401
1	6360-9590-0	PUSH MOUNT TIE L=155MM	WIRE
1	6360-9600-0	CABLE CLAMP D=7.9MM	WIRE
1	7010-2219-0	250 TNAL ASSY L=100MM	CN401-N
1	7012-6307-0	CABLE ASSY 8 POS POWER	CN409
1	7012-6354-0	CONN WIRE UL1007 #18 BR	CN401-L
1	8900-9520-0	DC FAN CHA8012BS	FAN401
1	9500-0400-0	DOUBLE SIDE TAPE	TOP COVER

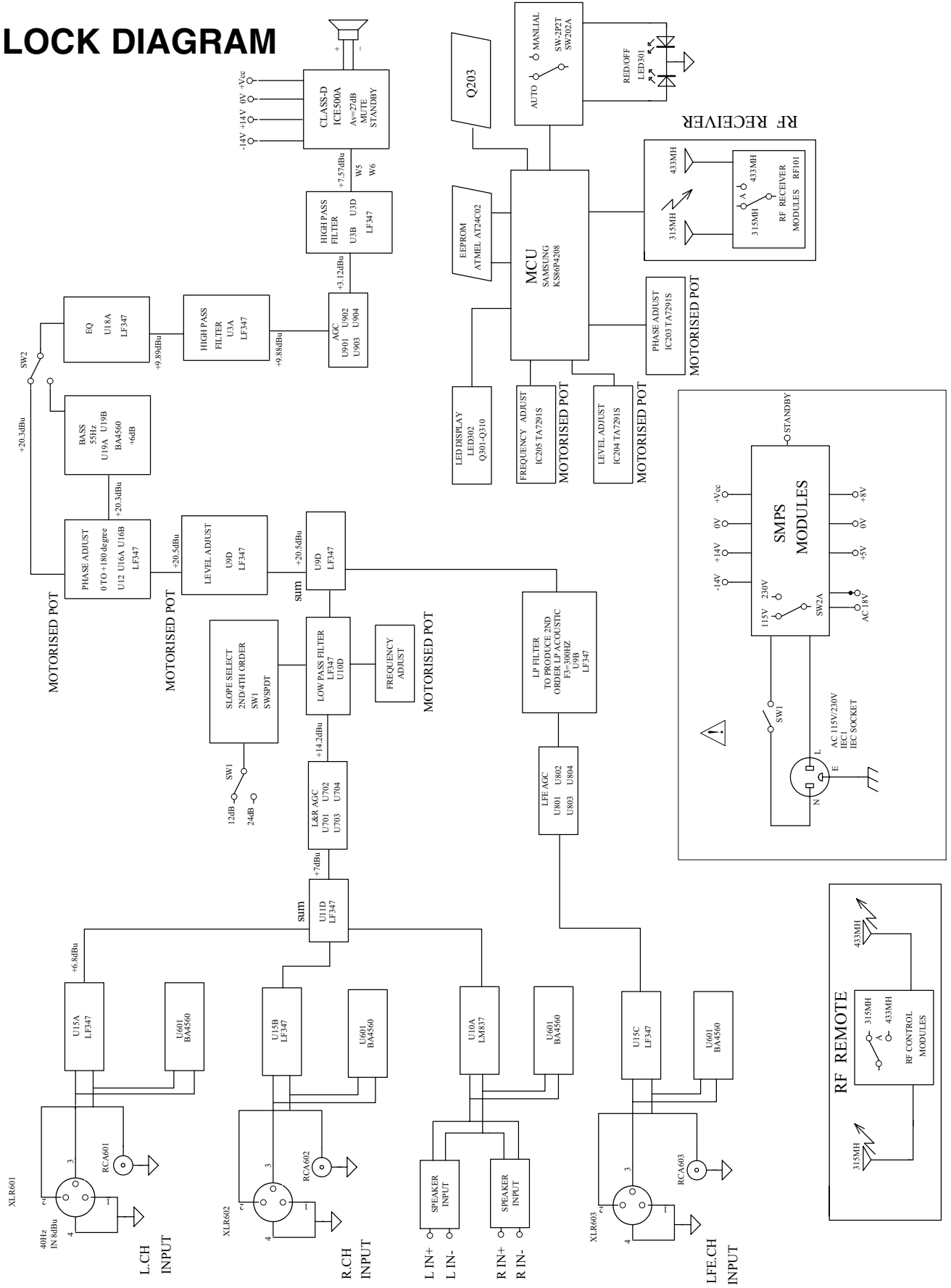
12" SPEAKER ASSEMBLY

QTY	PART NO	DESCRIPTION	LOCATION
1	1525-1810-0	12" XLS WOOFER SPEAKER 450W	SPEAKER

POWER CORD CABLE ASSEMBLY

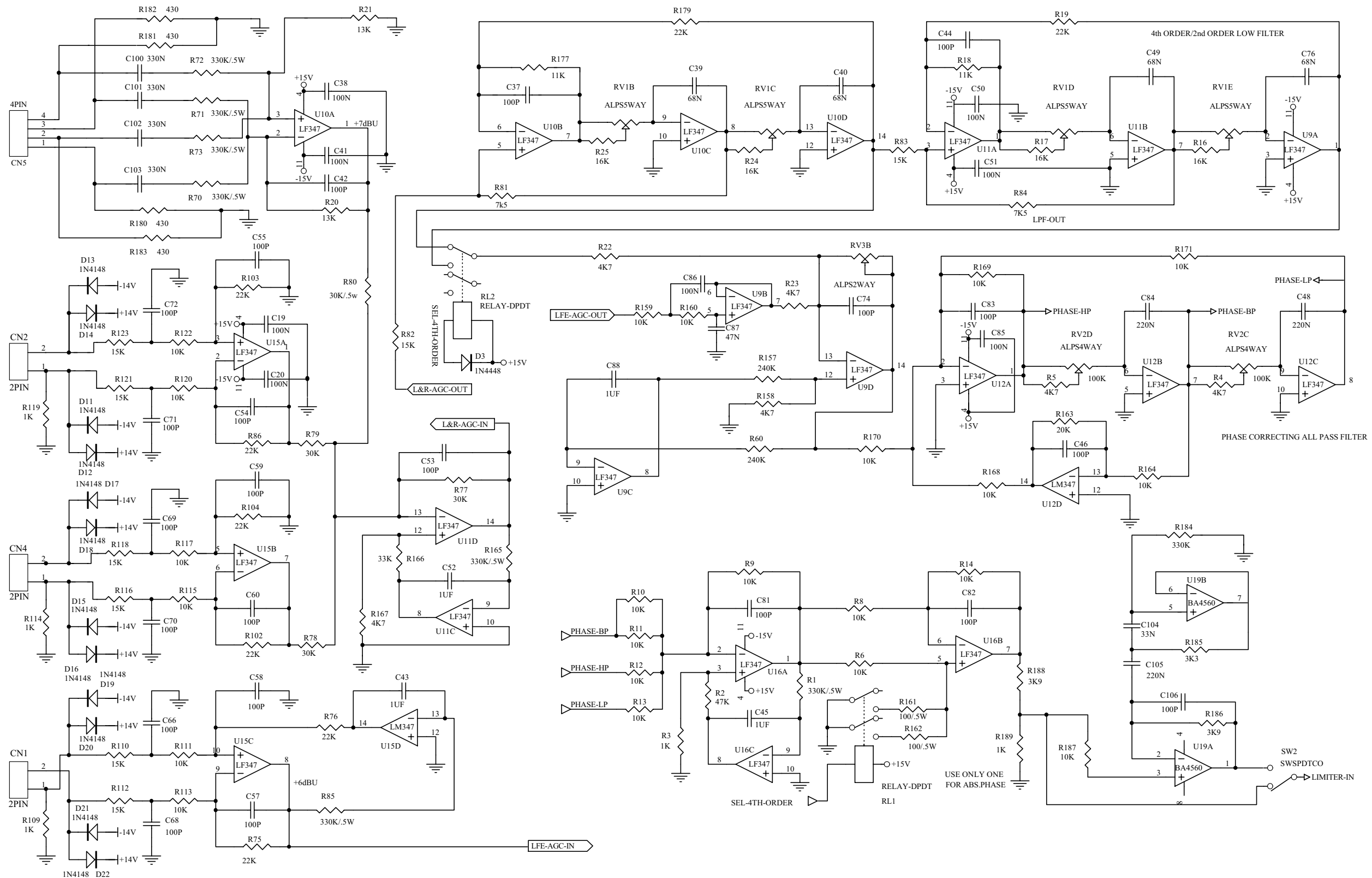
QTY	PART NO	DESCRIPTION	LOCATION
1	7011-6220-0	HO5VV-F 0.75MM /3C 2M	*EU
1	7011-5030-0	TC1490GP 3 CORE 1/P	*UK
1	7011-6210-0	SJT#18 /3C 2M BLK	*US

BLOCK DIAGRAM



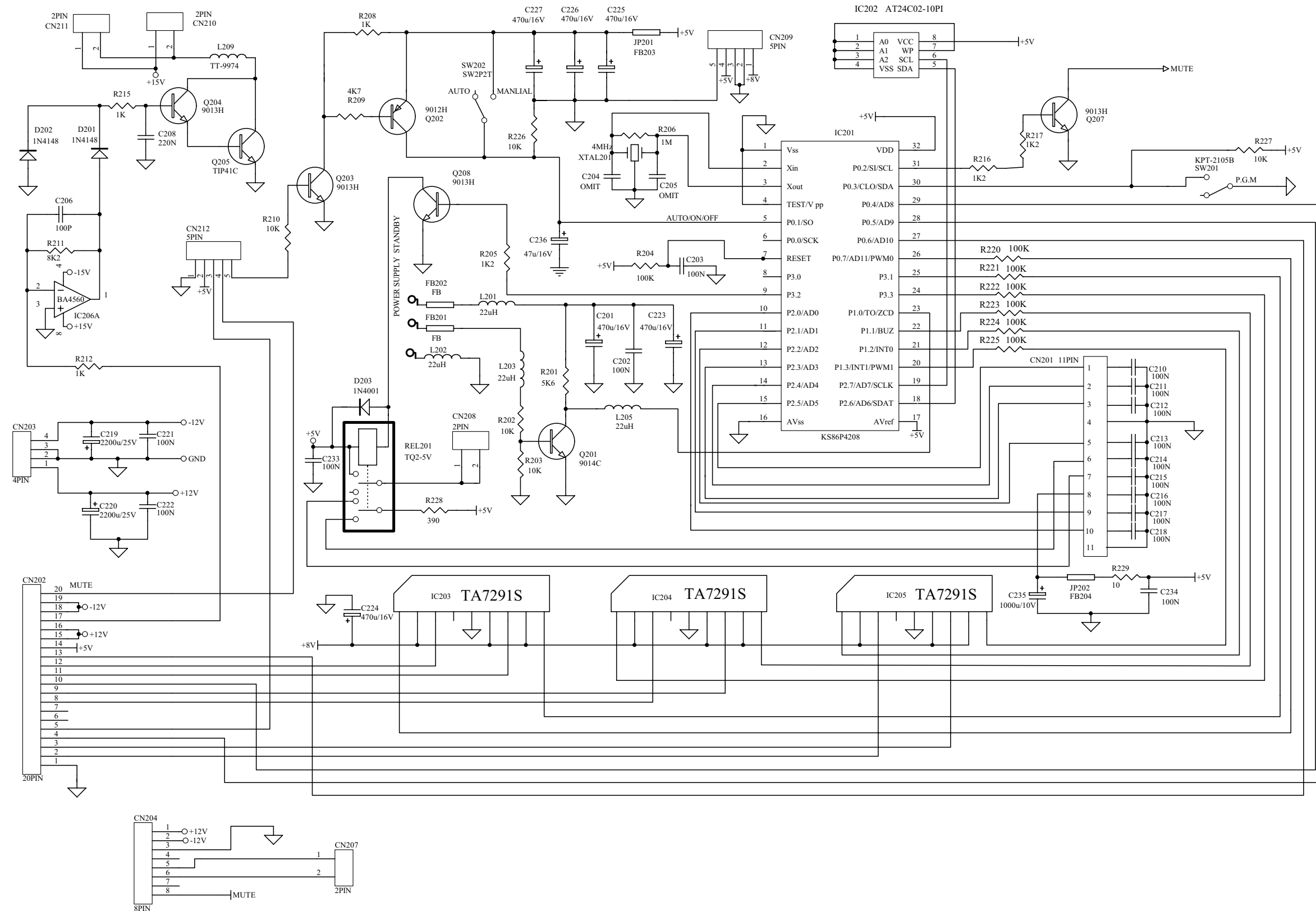
SCHEMATICS DIAGRAMS

Pre Amp Schematic



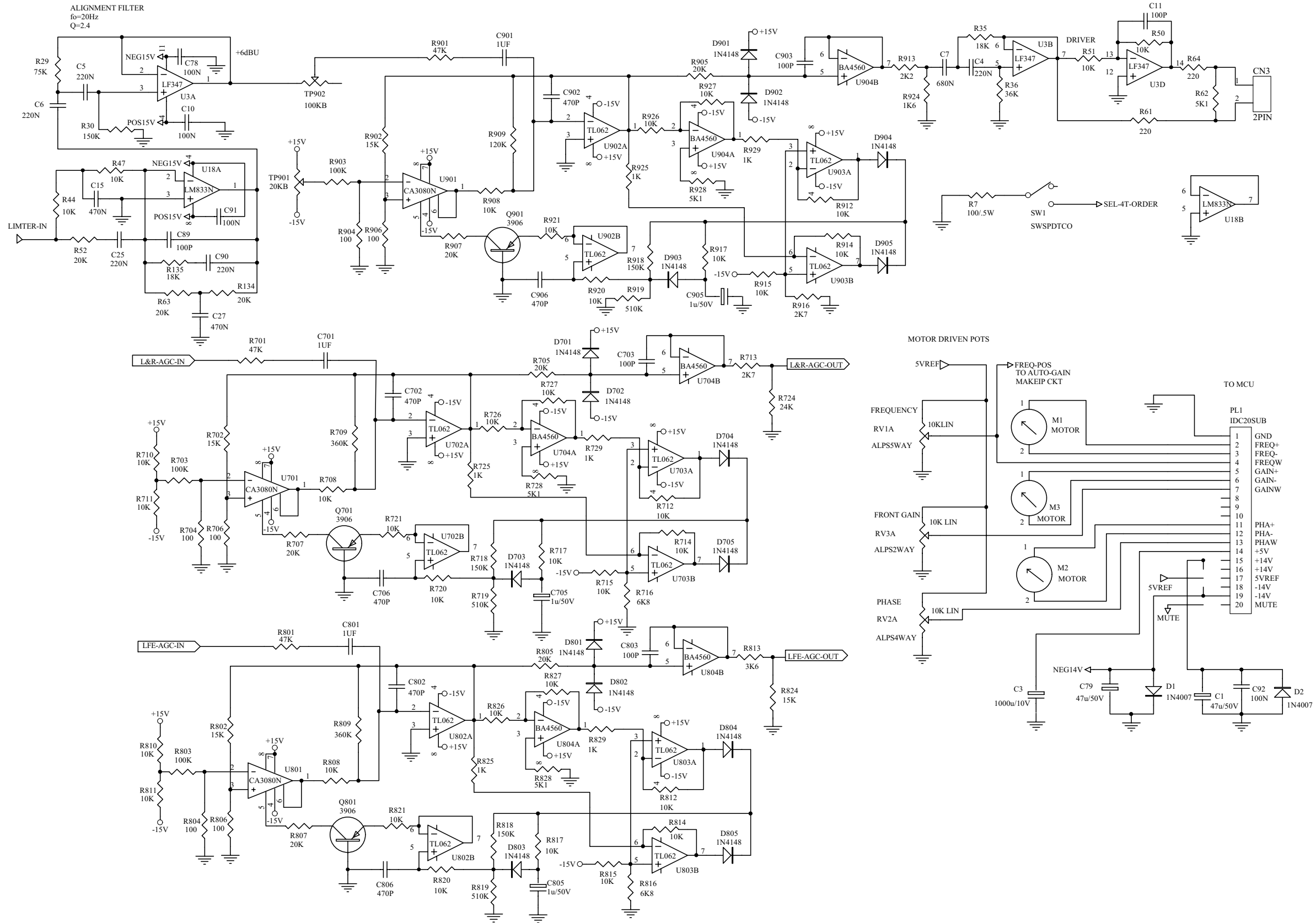
SCHMATICS DIAGRAMS

CPU



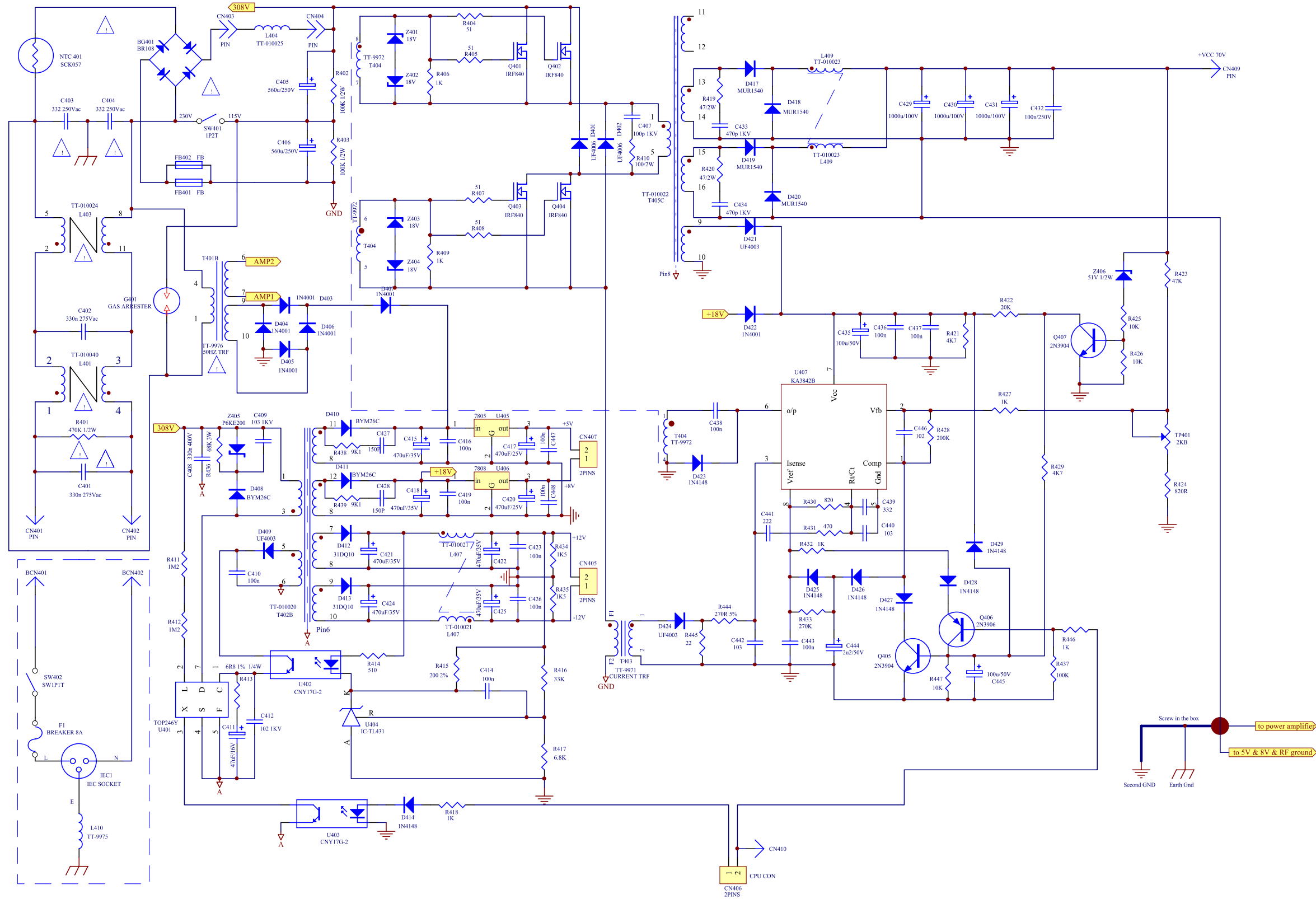
SCHEMATICS DIAGRAMS

AGC



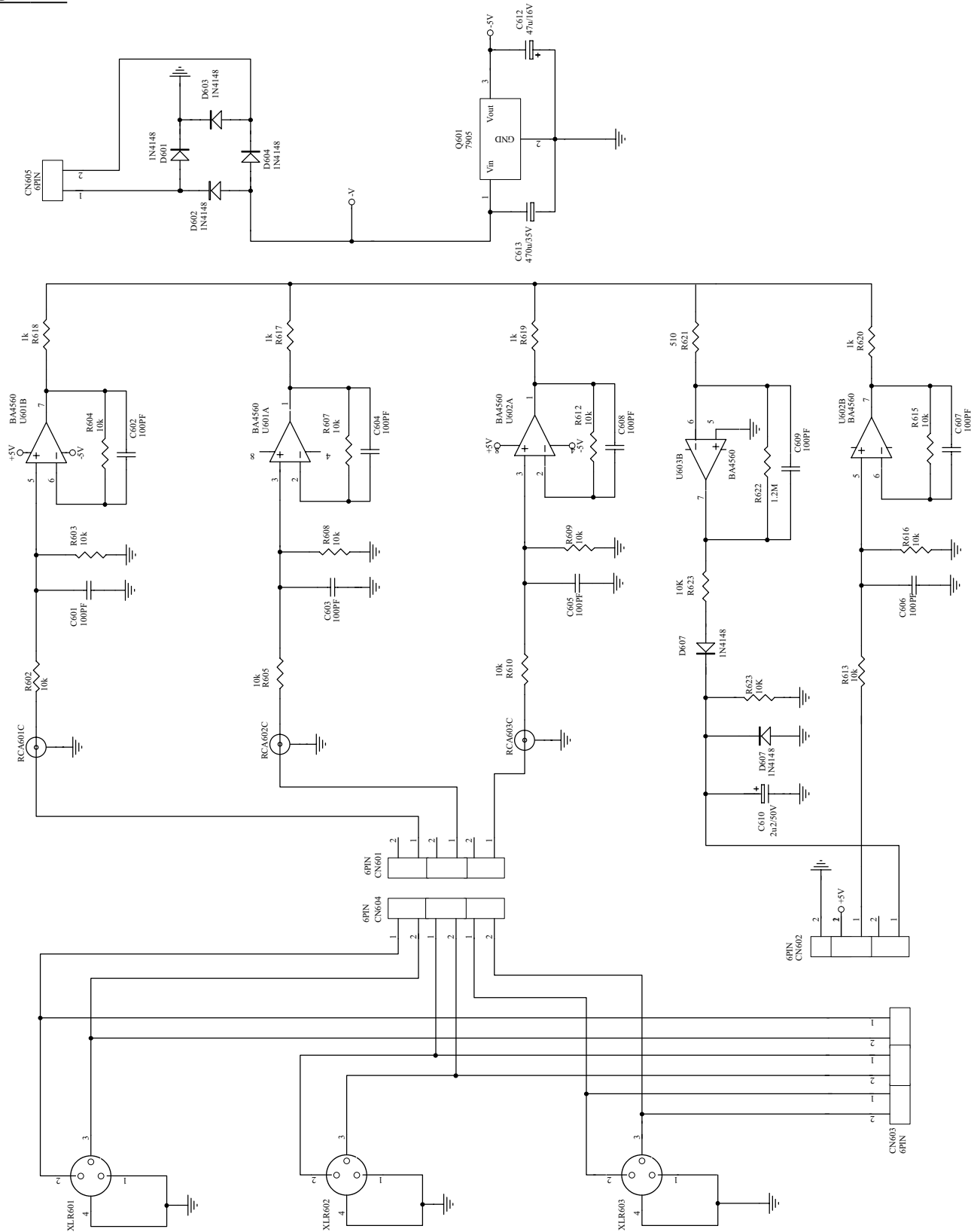
SCHEMATICS DIAGRAMS

SMPS



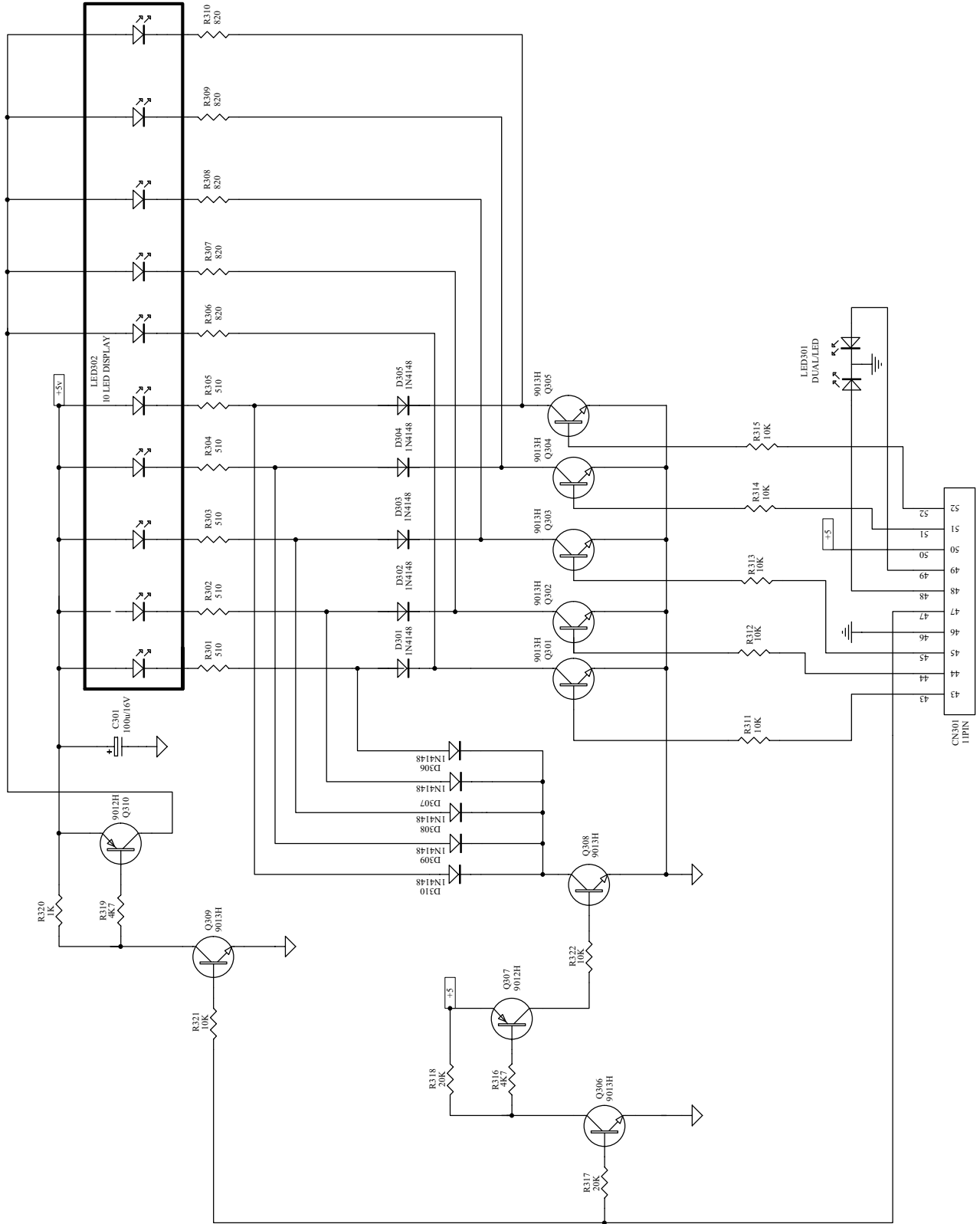
SCHEMATICS DIAGRAMS

RCA IN

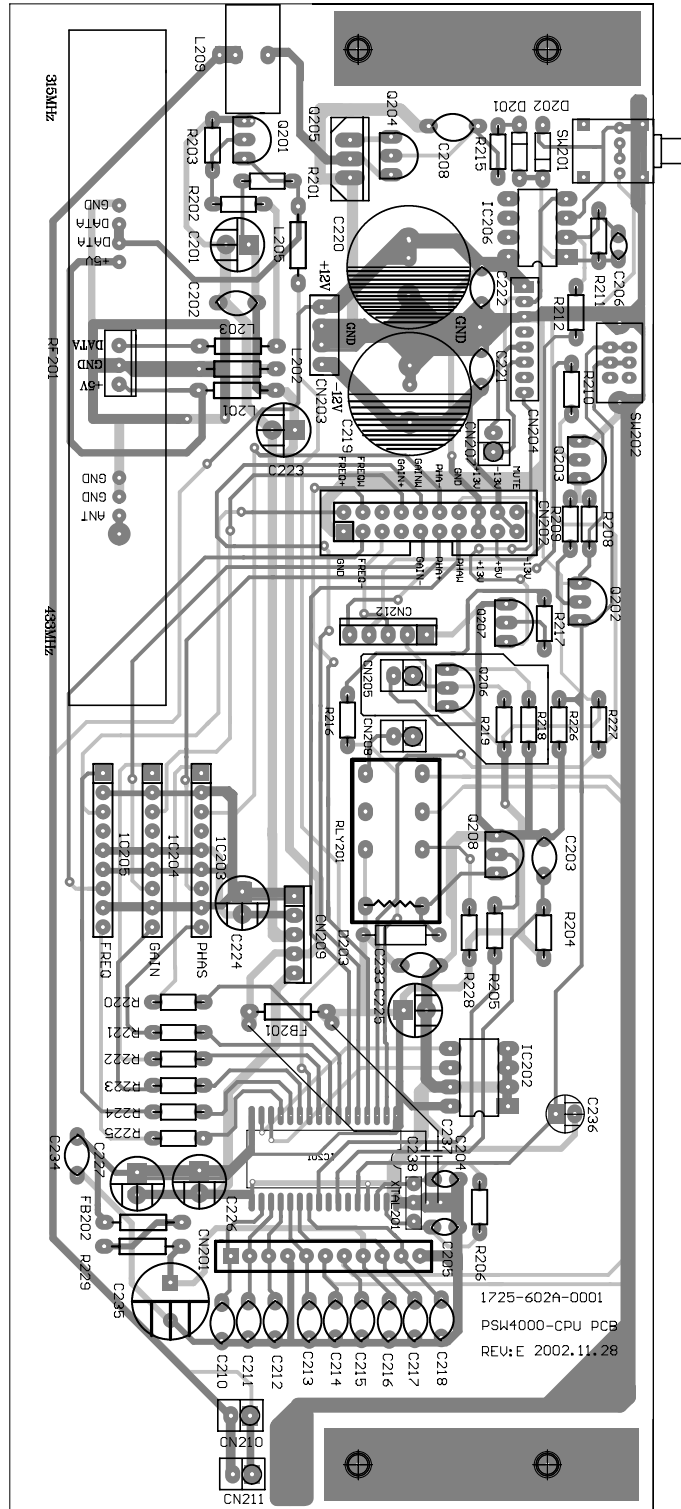


SCHEMATICS DIAGRAMS

LED

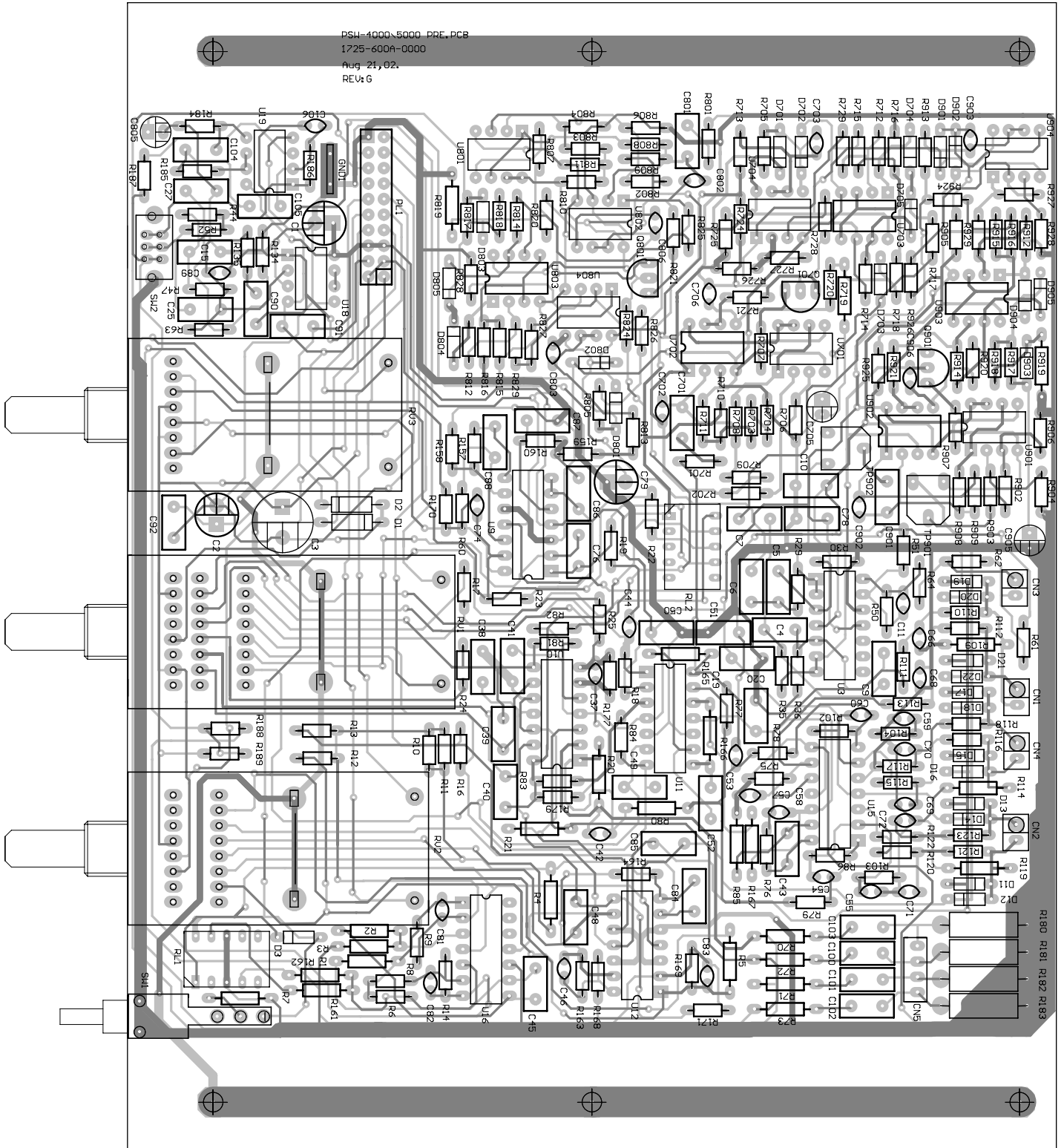


PCB LAYOUT



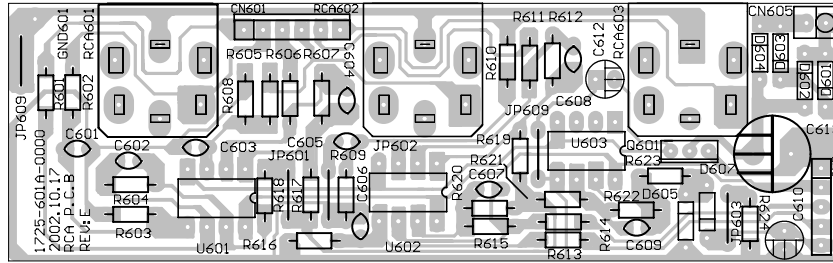
CPU PCB

PCB LAYOUT

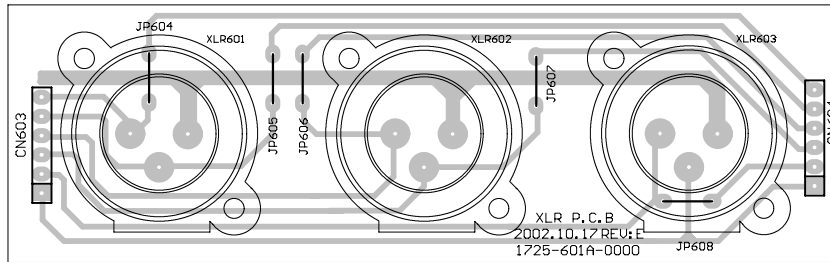


Pre AMP PCB

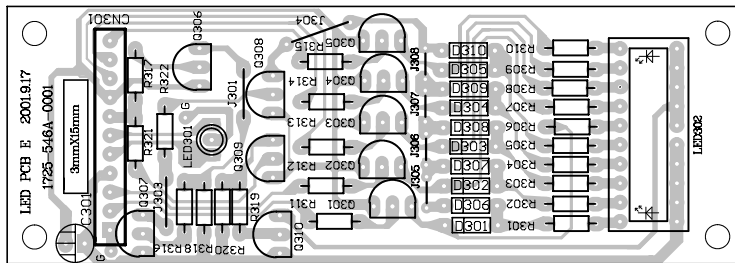
PCB LAYOUT



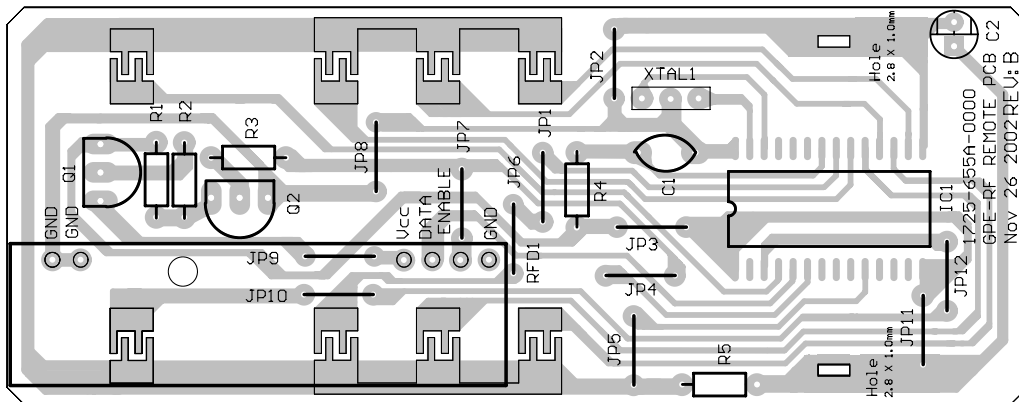
RCA IN PCB



XLR IN PCB



LED PCB

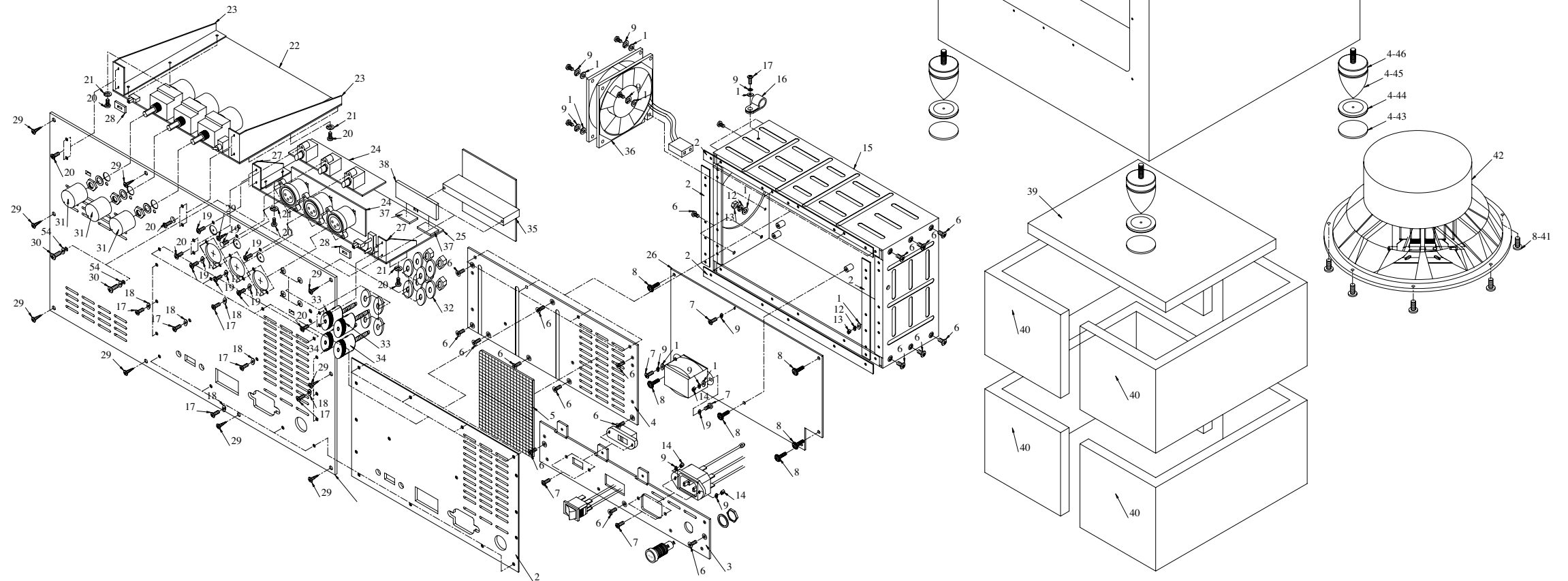


RF REMOTE PCB

EXPLODED VIEW DIAGRAMS

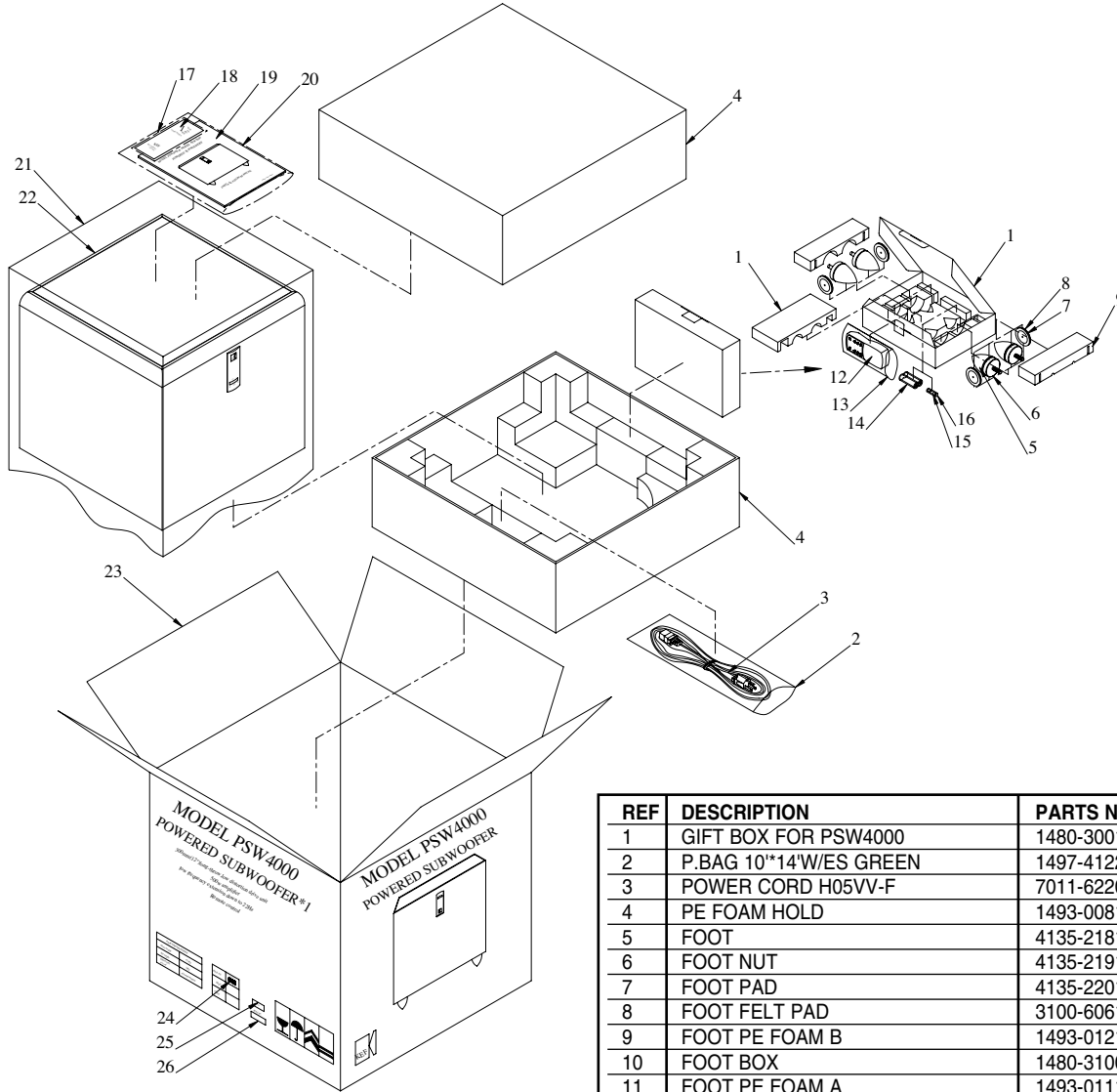
REF	DESCRIPTION	PARTS NO.	QTY
1	REAR PANEL	1404-1301-1	1
2	EVA PAD	4149-0131-0	1
3	SWITCH POWER TOP COVER B	1404-1501-1	1
4	SWITCH POWER TOP COVER A	1404-1401-0	1
5	DUST FILTER NET	3100-5951-0	1
6	SCREW B-TITE FLAT-CS M3X	2951-3010-3000	22
7	SCREW PH M3*10MM BZ	2900-3010-3000	7
8	SCREW M3*10 W/S&F	2900-3010-3030	6
9	SPRING WASHER M3*0.9*5.5	2607-3009-0553	11
10	METAL WASHER M3*0.5*8MM BZ	2600-3005-0803	7
11	INT TOOTH WASHER M4*0.8*8.5	2606-4008-0853	2
12	SPRING WASHER M4*1*7MM NI	2607-4010-0704	2
13	NUT HEX M4	2640-4030-0704	2
14	M3 NUT NI	640-3022-0544	3
15	SWITCH POWER BOTTOM	1404-1601-1	1
16	CABLE CLAMP D=7.9MM	6360-9600-0	1
17	3*12MM B-TITE BLK.ZN	2954-3012-3000	1
18	INT TEETH WASHER M3*0.5	2606-3005-0643	22
19	B-TITE 3*10MM BLK.ZN	2954-3010-3000	9
20	B-TITE 3*10MM (BLK.Zn)	2904-3008-3000	18
21	SPRING WASHER M3*0.9*5.5	2607-3009-0550	10
22	CONTRAL PCB	1725-600A-0000	1
23	PRE PCB BRACKET	4135-2221-0	2
24	RCA PCB	1725-601A-0000	1
25	CPU PCB	1725-602A-0000	1
26	SMP PCB	1725-603A-0000	1
27	PCB BRACKET	4135-0901-0	2
28	SW COVER	4153-1250-0	2
29	SCREW BINDING HEAD M4*16	2913-4016-3000	10
30	SCREW M4*10 BLK	2904-4010-3000	2

REF	DESCRIPTION	PARTS NO.	QTY
31	VL METAL KNOB	2444-7501-0	3
32	METAL WASHER M5*0.8*10MM YZ	2600-5008-1000	4
33	BINDING POST RED	2103-7001-0	2
34	BINDING POST BLK	2103-7101-0	2
35	AMPLIFIER MODULES 500W	8910-0592-0	1
36	DC FAN	8900-9520-0	1
37	RUBBER PAD	4152-6890-0	2
38	RF RECEIVER 433MHz FSK	8912-0028-0	1
39	ACOUSTIC FOAM B	4149-0231-0	1
40	ACOUSTIC FOAM A	4149-0221-0	4
41	SCREW M4*28 BLACK	2908-4028-3400	8
42	12"XLS WOOFER SPEAKER	1525-1810-0	1
43	FOOT FELT PAD	3100-6061-0	4
44	FOOT PAD	4135-2201-1	4
45	FOOT	4135-2181-1	4
46	FOOT NUT	4135-2191-0	4
47	CABINET BLACK	1402-7902-0	1
48	LED PCB	1725-546A-0000	1
49	LED HOLD	3100-6051-0	1
50	LENS	4154-2351-0	1
51	SHRINKAGE TUBE ID=3.5MM	1660-0450-0	0.07
52	M3*12MM PAN HEAD	2910-3012-3000	4
53	TEMPERED GLASS TINTED BLACK	3109-0001-0	1
54	INT TOOTH WASHER M4*0.8	2606-4008-0853	2



EXPLODED VIEW DIAGRAMS

Packing Exploded View



REF	DESCRIPTION	PARTS NO.	QTY
1	GIFT BOX FOR PSW4000	1480-3001-0	1
2	P.BAG 10*14"W/ES GREEN	1497-4122-0	1
3	POWER CORD H05VV-F	7011-6220-0	1
4	PE FOAM HOLD	1493-0081-0	2
5	FOOT	4135-2181-1	4
6	FOOT NUT	4135-2191-0	4
7	FOOT PAD	4135-2201-1	4
8	FOOT FELT PAD	3100-6061-0	4
9	FOOT PE FOAM B	1493-0121-0	4
10	FOOT BOX	1480-3100-0	1
11	FOOT PE FOAM A	1493-0111-0	2
12	RF REMOTE	8912-0002-1	1
13	POLYBAG 04*5*9"W/PE-LD	1497-1932-0	1
14	GREEN CELL 3A SIZE	4060-0530-0	2
15	CERAMIC 5*20MM FUSE	5120-9001-0	1
16	POLY BAG 04*5*6"-FUSE	1497-2042-0	1
17	POLY BAG 04*5*9"	1497-1932-0	1
18	W.CARD FOR KEF (1 YEAR)	4301-6037-1	1
19	MANUAL	4301-7020-0	1
20	P.BAG 10**12"W/ES GREEN	1497-4102-0	1
21	PE BAG FOR CABINET	1497-7442-0	1
22	CABINET BLACK	1402-7902-0	1
23	GIFT BOX	1480-3001-0	1
24	UPC LABEL BLACK-EU	3000-9299-0	1
25	DATE LABEL	3000-4447-0	1
26	BARCODE S/N LABEL	3000-6333-0	1