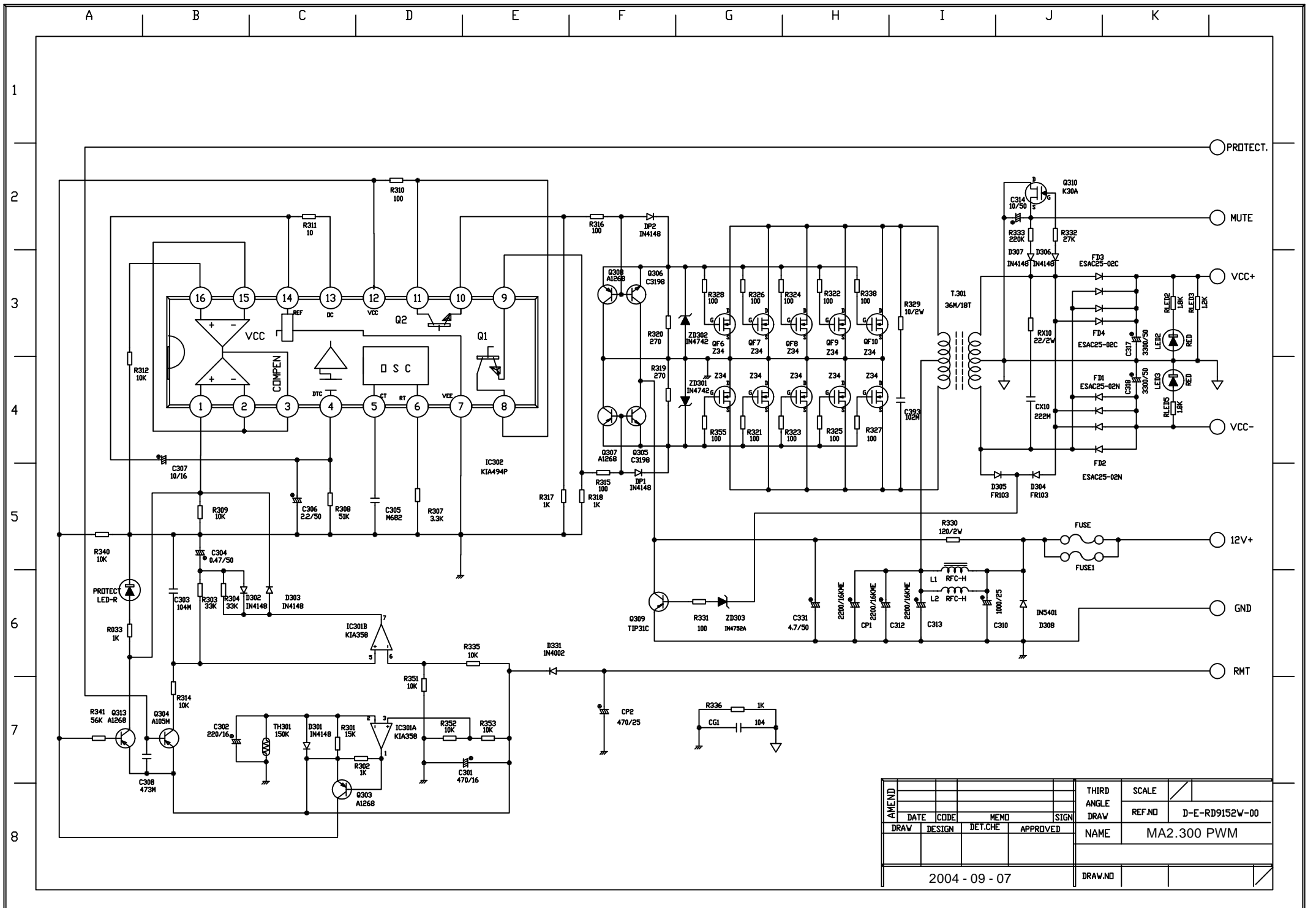
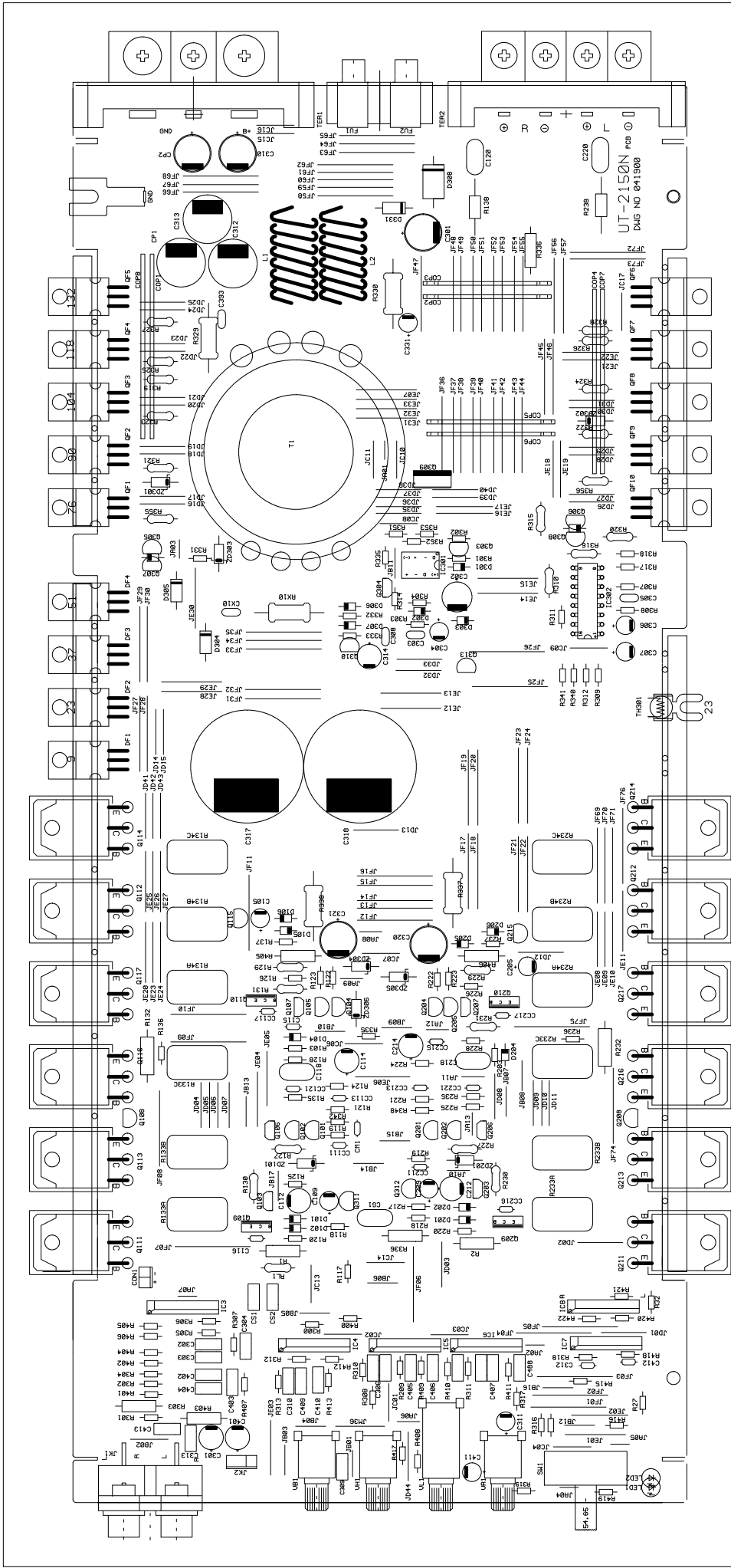


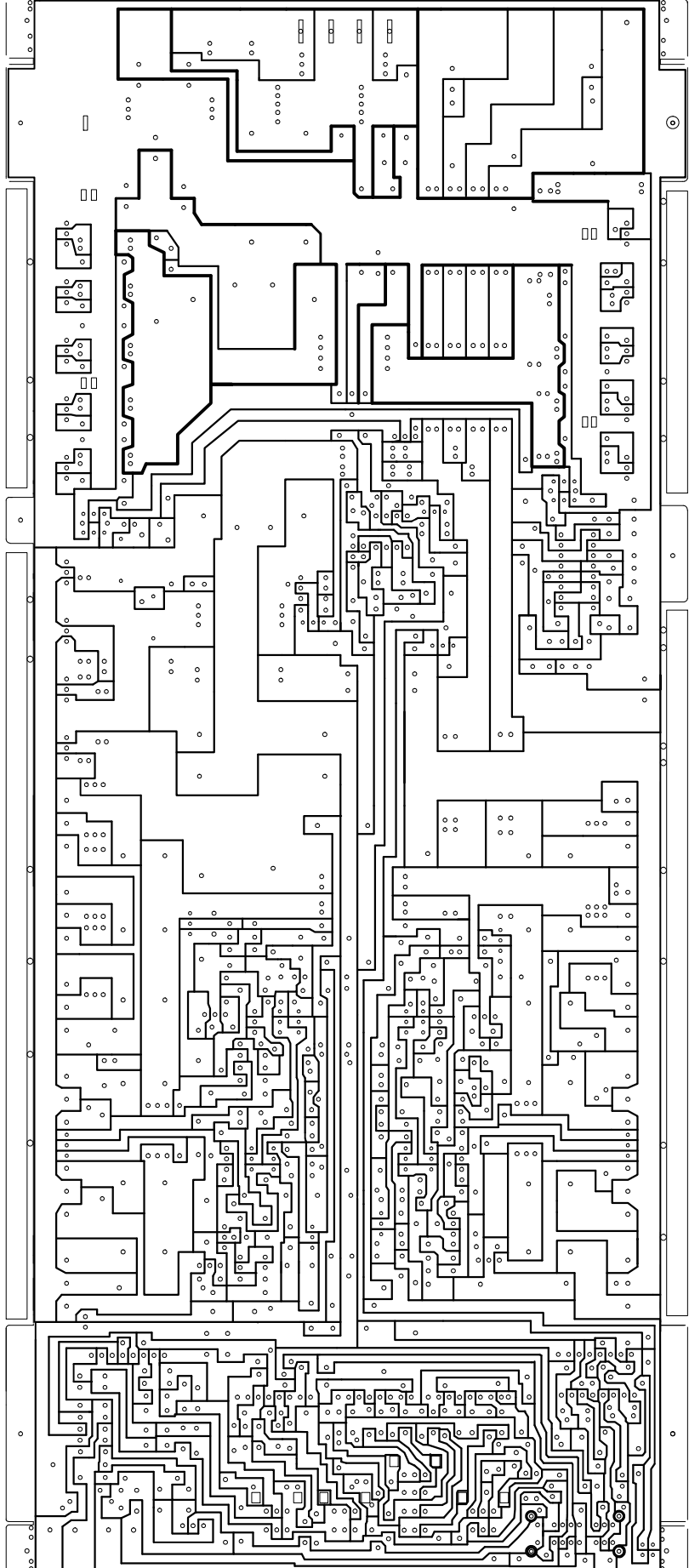
AMEND					THIRD ANGLE	SCALE	
DATE	CODE	MEMO	SIGN		REF.NO	D-E-RD9152I-00	
DRAW	DESIGN	DET.CHE	APPROVED		NAME	MA2.300 FRONT	
2004 - 09 - 07					DRAW.NO		



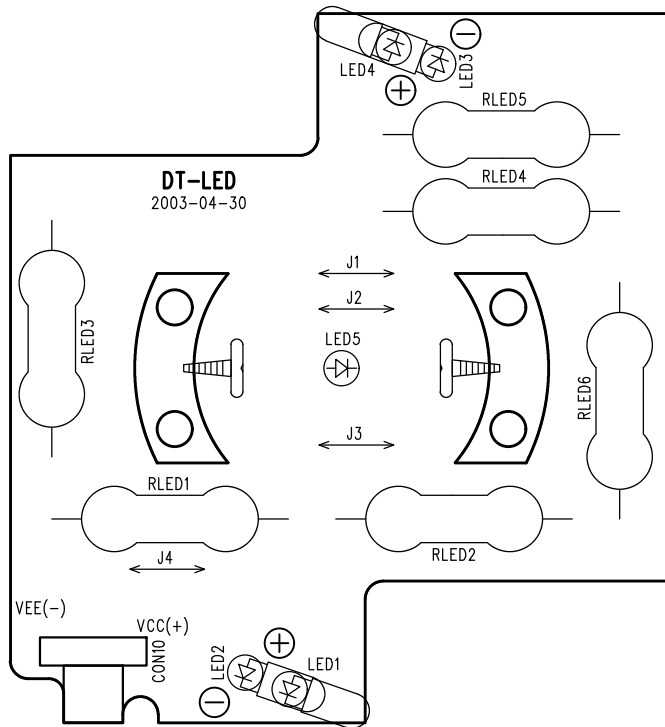
AMEND					THIRD ANGLE	SCALE	
DATE	CODE	MEMO	SIGN	DRAW	REF.NO	D-E-RD9152W-00	
DRAW	DESIGN	DET.CHE	APPROVED		NAME	MA2.300 PWM	
2004 - 09 - 07					DRAW.NO		



TITLE		PCB BOARD MA2.300	
CHECKED DATE	APPROVED DATE	SIZE NUMBER	REV
		A3	D - B - A69152MTS - 0
		DATE: 2004-01-08	DRAWN BY:
		FILE NAME:	SHEET: 1/1



TITLE	PCB BOARD MA2.300		
CHECKED	DATE	APPROVED	DATE
SIZE	NUMBER	REV	
A3	D - B - A69152MBP - 00		0
DATE:	2004 - 01 - 08	DRAWN BY:	
FILE NAME:	SHEET: 1/1		



TITLE
PCB BOARD DELTA-LED

CHECKED DATE

APPROVED DATE

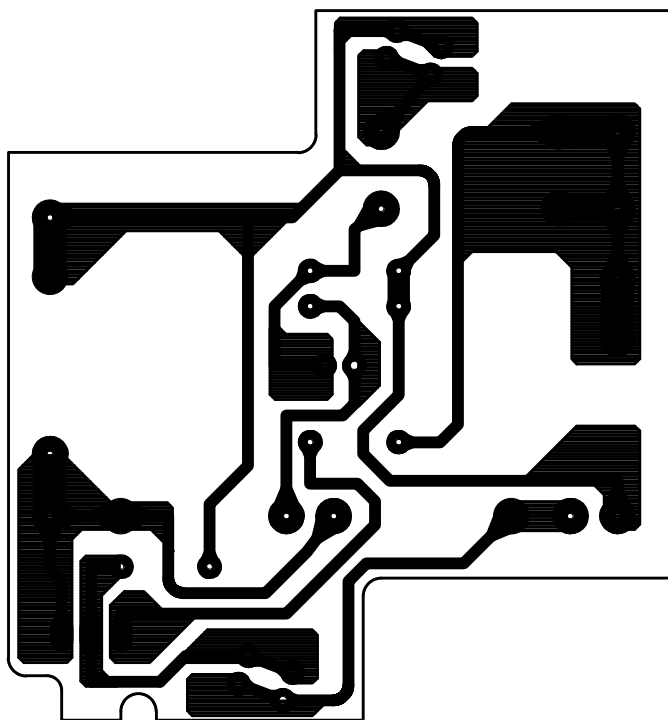
SIZE	NUMBER	REV
A4	D-E-A69502ETS00	0

DATE:2004-01-28

DRAWN BY :C.Y.WON

FILE NAME:

Sheet : 1 / 1



		TITLE PCB BOARD DELTA-LED		
CHECKED DATE	APPROVED DATE	SIZE A4	NUMBER D-E-A69502EBP00	REV 0
		DATE:2004-01-28		DRAWN BY :C.Y.WON
		FILE NAME:		Sheet : 1 / 1

PART LIST(MA2.300)

№ BUYER : DELTA

№ MODEL : MA2.300

№ CODE :

NO	CODE	NAME	STAN	Q'TY	REMARK
1	B-FLUX-----1	FLUX NT2016	@44000 IR410M	1.00	
2	B-IPA-----1	IPA IT330M	15kg:@32000	1.00	
3	B-SLDR-BAR--1	SOLDER BAR 60%	kg:\$4.2 g:\$0.0042	1.00	
4	B-SLDR-WIRE-1	SOLDER WIRE 60%	kg:\$4.0 g:\$0.004	1.00	
5	B-TUB-EMP1--1	TUBE EMPIRE	1mm/O.05 @70	1.00	
6	G-LED-HOLDER6	HOLDER LED ASS'Y	TOH-30FOGD1-B(G/R)	1.00	
7	H-CER-100CHT1	CER CAP 100PF CH	TP TYPE	2.00	CC111, CC211
8	H-CER-150T--1	CER CAP 150PF	TP TYPE	2.00	C115, C215
9	H-CER-33CHT-1	CER CAP 33P CH	TP TYPE	2.00	CC121, CC221
10	H-CER-470SLT1	CER CAP 470PF SL	TP TYPE	4.00	C116, CC117, CC216, CC217
11	H-CER-47CHT-1	CER CAP 47PF CH	TP TYPE	2.00	C312, C412
12	H-CER-560PT-1	CER CAP 560P	TP TYPE	2.00	CC113, CC213
13	H-COPER-2--3	COPER 2P NI 1t	2P_30mm_10mm(h)	4.00	COP2, COP3, COP5, COP6
14	H-COPER-2--4	COPER 2P NI 1t	2P_45mm_10mm(h)	4.00	COP1, COP4, COP7, COP8
15	H-DIO-104---1	DIODE F/RECOVR FR10	FR104	2.00	D304, D305
16	H-DIO-25C---2	DIODE YG225C2	YG225C2 Y=24	2.00	DF3, DF4
17	H-DIO-25N---2	DIODE YG225N2	YG225N2 Y=24	2.00	DF1, DF2
18	H-DIO-4002--1	DIODE IN4002		1.00	D331
19	H-DIO-4148--1	DIODE IN4148M		17.00	DP1, DP2, D101, D102, D104, D105, D106, D201,
20	H-DIO-4148--1	DIODE IN4148M		0.00	D202, D204, D205, D206, D301, D302, D303, D306,
21	H-DIO-4148--1	DIODE IN4148M		0.00	D307
22	H-DIO-5402--1	DIODE IN5402		1.00	D308
23	H-DIZ-1W10--1	DIODE ZENER 1W10V	1N4740	2.00	ZD101, ZD201
24	H-DIZ-1W12V-1	DIODE ZENER 1W12V	1N4742	2.00	ZD301, ZD302
25	H-DIZ-1W15V-1	DIODE ZENER 1W15V	1N4744	2.00	ZD304, ZD305
26	H-DIZ-1W39V-1	DIODE ZENER TZP39	IN4754/1W	1.00	ZD303
27	H-DIZ-1W5.6V1	DIODE ZENER 1W5.6V	IN4734	1.00	ZD306(TOP SILK) İ ç' a ' a çãã . İ » ðã0
28	H-E047-50SHT1	EC 0.47/50 5x11 SHL	TP TYPE	1.00	C304P
29	H-E10-16SHT-1	EC 10/16 5x11 SHL	TP TYPE	3.00	C105, C205, C314
30	H-E10-50SHT-1	EC 10/50 5x11 SHL	TP TYPE	1.00	C307P
31	H-E13-16SM--1	EC 1000/16 10x20 SMS		1.00	C310
32	H-E2.2-50SHT1	EC 2.2/50 5x11 SHL	TP TYPE	1.00	C306P
33	H-E220-16SH-1	EC 220/16 6.3x11 SHL		1.00	C302P

PART LIST(MA2.300)

£ª BUYER : DELTA

£ª MODEL : MA2.300

£ª CODE :

NO	CODE	NAME	STAN	Q'TY	REMARK
34	H-E223-16KG-1	EC2200/16 12.5x20KMG		3.00	CP1, C312, C313P
35	H-E333-50SM-1	EC 3300/50 25X25SMH	25.4X25 SMH	2.00	C317, C318
36	H-E4.7-50SHT1	EC 4.7/50 5X11 SHL	TP TYPE	3.00	C109, C209, C331
37	H-E470-16SH-2	EC470/16 8X11.5 SHL		1.00	C301P
38	H-E47-25SHT-1	EC 47/25 5x11 SHL	TP TYPE	2.00	C311, C411
39	H-E473-16SH-1	EC 4700/16 16x25 SHL		2.00	C320, C321
40	H-E47-50SHT-1	EC 47/50 6.3x11 SHL	TP TYPE	4.00	C112, C212, C114, C214
41	H-FUS-30A---1	FUSE ATC-30A		2.00	
42	H-FUS-HOL3-31	HOLDER FUS P3	DKT-08011 PCB-INSERT	2.00	FU1, FU2
43	H-IC-358P---1	IC KIA358P		1.00	IC301
44	H-IC-4560L--1	IC NJM4560L SIP		6.00	IC3, IC4, IC5, IC6, IC7, IC8
45	H-IC-494CN--1	IC 494CN		1.00	IC302
46	H-JAK-R4PBR-7	JACK RCA 4P BARSS	DKJ44104 B/B	1.00	JK1
47	H-JW-JUMPW06T	JUMP WIRE 0.6T		198.00	
48	H-JW-JUMPW--9	JUMP WIRE 0.6x7.5mm		2.00	J3, J4
49	H-LED-34RE--3	LED RED 3PIE	LT0313-41-UC9T(C-RED	2.00	LED2, LED3
50	H-MFB-104P5T1	CAP/M-FILM 104/63V	BOX FILM 104 TP TYPE	8.00	CS1, CS2, C302P, C303P, C304P, C402, C403, C404
51	H-MFB-473P5T1	CAP/M-FILM 473/63V	BOX FILM 473 TP TYPE	8.00	C305, C306, C307, C388, C405, C406, C407, C488
52	H-MFB-683P5T1	CAP/M-FILM 683/63V	BOX FILM 683 TP TYPE	4.00	C309, C310, C409, C410
53	H-MOS-44----4	MOSFET FQP50N06	N-CH TO220	10.00	QF1, QF2, QF3, QF4, QF5, QF6, QF7, QF8,
54	H-MOS-44----4	MOSFET FQP50N06	N-CH TO220	0.00	QF9, QF10
55	H-MYR-103T--2	MYLAR 103 (0.01/50)	TP TYPE "J"	1.00	CM1
56	H-MYR-104T--2	MYLAR 104(0.1/50)	TP TYPE "J"	6.00	CG1, C118, C120, C218, C220, C303
57	H-MYR-222T--2	MYLAR 222(0.0022/50)	TP TYPE "J"	4.00	CX10, C313, C393, C413
58	H-MYR-473T--2	MYLAR 473(0.047/50)	TP TYPE "J"	1.00	C308
59	H-MYR-682T--2	MYLAR 682(0.0068/50)	TP TYPE "J"	1.00	C305P
60	H-PBA-2150A51	MAIN PCB UT2150	376x163	1.00	COLOR : BLUE(TOP PATTERN ½)
61	H-PBS-9502DT1	LED PCB DT-LED N.C	224x80xCM1-1/4-WHITE	1.00	COLOR : WHITE
62	H-PTRC-12---1	RFC COIL BAR	5UH/L 8x25 2/12	2.00	L1, L2
63	H-PTTO-49--33	P.T TOROIDE 49mm	UT2150 5T/16T	1.00	T1
64	H-R12-10----1	RESISTOR 1/2W 10		4.00	R1, R2, R405, R406
65	H-R12-13----1	RESISTOR 1/2W 1K		2.00	R336, R336P
66	H-R12-220---1	RESISTOR 1/2W 220		2.00	R132, R232

PART LIST(MA2.300)

№ BUYER : DELTA

№ MODEL : MA2.300

№ CODE :

NO	CODE	NAME	STAN	Q'TY	REMARK
67	H-R14-100---1	RESISTOR 1/4W 100		21.00	R127, R129, R130, R131, R227, R229, R230, R231,
68	H-R14-100---1	RESISTOR 1/4W 100		0.00	R310P, R315, R316P, R321, R322, R323, R324, R325,
69	H-R14-100---1	RESISTOR 1/4W 100		0.00	R326, R327, R328, R355, R356
70	H-R14-270---1	RESISTOR 1/4W 270		2.00	R319P, R320
71	H-R18-100---1	RESISTOR 1/8W 100		5.00	R120, R220, R331, R136, R236
72	H-R18-1003--1	RESISTOR 1/8W 100K		2.00	R342, R348
73	H-R18-10----1	RESISTOR 1/8W 10		1.00	R311P
74	H-R18-103---1	RESISTOR 1/8W 10K		14.00	R117, R118, R217, R218, R309, R312, R314P, R335P,
75	H-R18-103---1	RESISTOR 1/8W 10K		0.00	R340, R351, R352, R353, R420, R421
76	H-R18-1203--1	RESISTOR 1/8W 120K		1.00	R333
77	H-R18-123---1	RESISTOR 1/8W 12K		2.00	R135, R235
78	H-R18-124---1	RESISTOR 1/8W 1.2K		2.00	R317, R417
79	H-R18-13----1	RESISTOR 1/8W 1K		16.00	R32, R124, R224, R302P, R304, R308, R310, R312,
80	H-R18-13----1	RESISTOR 1/8W 1K		0.00	R317P, R318P, R319, R404, R408, R410, R412, R419
81	H-R18-153---1	RESISTOR 1/8W 15K		1.00	R301P
82	H-R18-220---1	RESISTOR 1/8W 220		2.00	R300, R400
83	H-R18-223---1	RESISTOR 1/8W 22K		6.00	R334, R307, R313, R407, R413, R415
84	H-R18-224---1	RESISTOR 1/8W 2.2K		4.00	R125, R137, R225, R237
85	H-R18-244---1	RESISTOR 1/8W 2.4K		2.00	R316, R416
86	H-R18-273---1	RESISTOR 1/8W 27K		3.00	R126, R226, R332
87	H-R18-303---1	RESISTOR 1/8W 30K		2.00	R318, R418
88	H-R18-330---1	RESISTOR 1/8W 330		2.00	R121, R221
89	H-R18-333---1	RESISTOR 1/8W 33K		2.00	R303P, R304P
90	H-R18-334---1	RESISTOR 1/8W 3.3K		3.00	R128, R228, R307
91	H-R18-393---1	RESISTOR 1/8W 39K		6.00	R302, R305, R306, R402, R405, R406
92	H-R18-394---1	RESISTOR 1/8W 3.9K		1.00	R27
93	H-R18-434---1	RESISTOR 1/8W 4.3K		2.00	R103, R203
94	H-R18-4703--1	RESISTOR 1/8W 470K		1.00	R335
95	H-R18-473---1	RESISTOR 1/8W 47K		2.00	R119, R219
96	H-R18-474---1	RESISTOR 1/8W 4.7K		5.00	R209, R311, R409, R411, R422
97	H-R18-513---1	RESISTOR 1/8W 51K		1.00	R308
98	H-R18-56----1	RESISTOR 1/8W 56		4.00	R122, R123, R222, R223
99	H-R18-563---1	RESISTOR 1/8W 56K		1.00	R341

PART LIST(MA2.300)

£ª BUYER : DELTA

£ª MODEL : MA2.300

£ª CODE :

NO	CODE	NAME	STAN	Q'TY	REMARK
100	H-R18-62----1	RESISTOR 1/8W 62		1.00	R3
101	H-R1WM-472--2	RESISTOR MET 1W4.7	M TYPE	2.00	R138, R238
102	H-R2WM-120--1	RESISTOR MET 2W120		1.00	R330
103	H-R2WM-124--2	RESISTOR MET 2W1.2K	M TYPE	1.00	RLED3
104	H-R2WM-184--2	RESISTOR MET 2W1.8K	M TYPE	2.00	RLED2, RLED5
105	H-R2WM-22---2	RESISTOR MET 2W22	M TYPE	2.00	RX10, R329
106	H-R3WM-240--2	RESISTOR MET 3W240	3W 240 J/F TYPE	2.00	R337, R338
107	H-R5WM-015--3	RESISTOR MPR 5W0.15	2P ROUND 16X8.X18	12.00	R133A, R133B, R133C, R134A, R134B, R134C, R233A, R233B,
108	H-R5WM-015--3	RESISTOR MPR 5W0.15	2P ROUND 16X8.X18	0.00	R233C, R234A, R234B, R234C
109	H-STRG-3PGB-5	TERMINAL SCREW _2B	DK031215B 3P BRASS	1.00	TER1
110	H-STRG-4PGB-5	TERMINAL SCREW _2B	DK041214BB 4P BRASS	1.00	TER2
111	H-SWS-4303--2	SW SLIDE SK43D03	4C3P 10MM	1.00	SW1
112	H-THM-150K--2	THERMISTOR 150K	"LUG"	1.00	TH301
113	H-TR-1023YT-1	TR KTA1023Y	TP TYPE	4.00	Q103, Q106, Q203, Q206
114	H-TR-1027YT-1	TR KTC1027Y	TP TYPE	2.00	Q107, Q207
115	H-TR-1268G--1	TR KTA1268GR		8.00	Q101, Q102, Q201, Q202, Q303, Q307, Q308, Q313
116	H-TR-3112B--1	TR KTC3112B		2.00	Q108, Q208
117	H-TR-3198YT-1	TR KTC3198Y	TP TYPE	2.00	Q115, Q215
118	H-TR-31C----1	TR TIP31C		1.00	Q309
119	H-TR-3200G--1	TR KTC3200GR		6.00	Q104, Q105, Q204, Q205, Q305, Q306
120	H-TR-35C----1	TR TIP35C		6.00	Q111, Q113, Q116, Q211, Q213, Q216
121	H-TR-36C----1	TR TIP36C		6.00	Q112, Q114, Q117, Q212, Q214, Q217
122	H-TR-600E---1	TR 2SD600E		2.00	Q109, Q209
123	H-TR-631E---1	TR 2SB631E		2.00	Q110, Q210
124	H-TR-A105---1	TR KRA105M		1.00	Q304
125	H-TR-K30A---1	TR K30A		3.00	Q310, Q311, Q312
126	H-VR29115B5-1	RTVR V091 VCo 15RS	B5K	1.00	VB1
127	H-VR29115C501	RTVR V091 VCo 15RS	C50K	1.00	VH1
128	H-VR29115C5-1	RTVR V091 VCo 15RS	C5K	1.00	VR1
129	H-VR49115C501	RTVR V091 4VCo 15RS	C50K	1.00	VL1
130	H-W16-RT080-1	RING TERMINAL 10mm	0.16/11 BK 80 3.5	1.00	
131	H-W3P-CS200-2	3P C/ST 200/3mm	DELTA W/LAL0640-03	1.00	TO DT-LED PCB