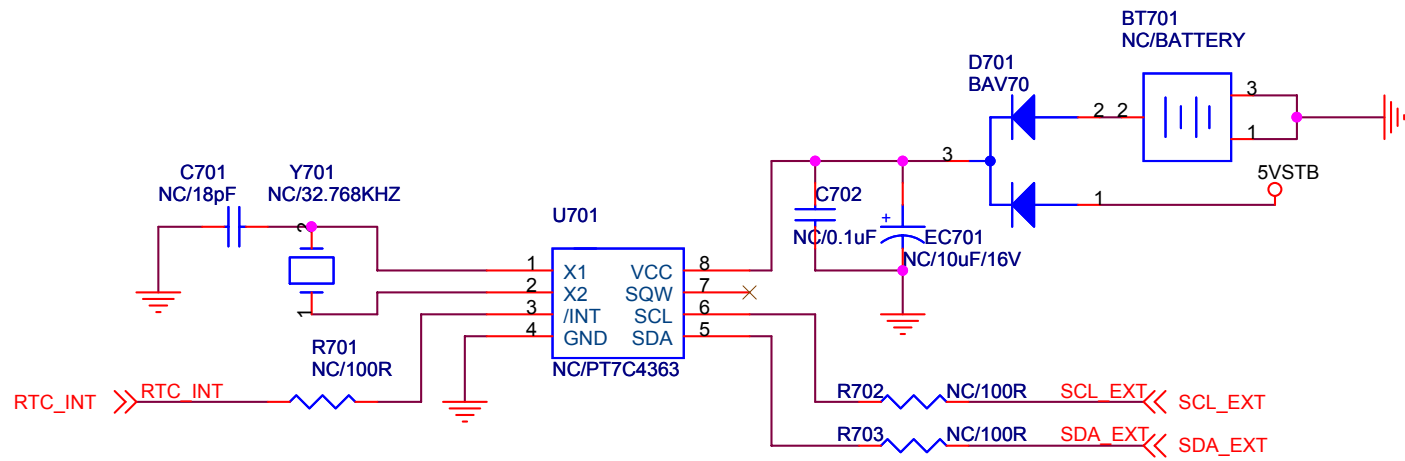
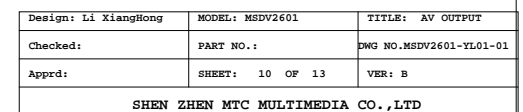
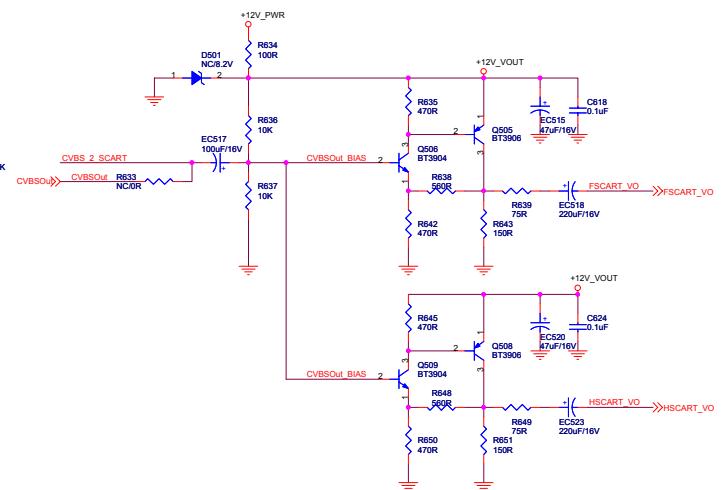
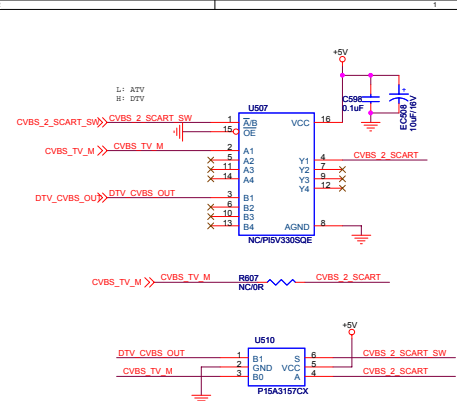


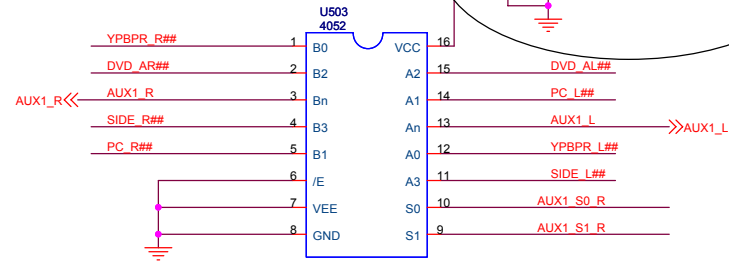
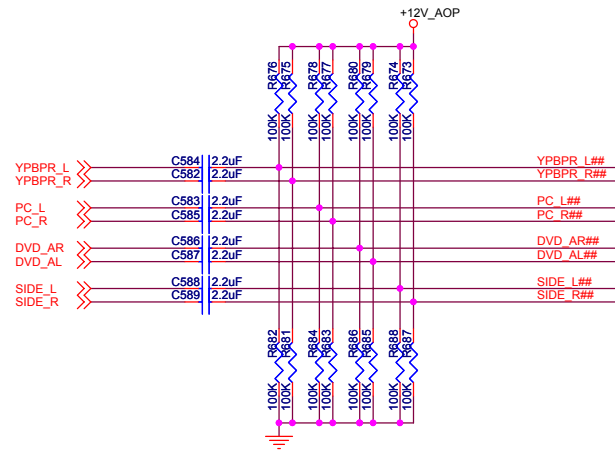
Design: Li XiangHong	MODEL: MSDV2601	TITLE: Ext MCU(optional)
Checked:	PART NO.:	DWG NO.MSDV2601-YL01-01
Apprd:	SHEET: 12 OF 13	VER: B

SHEN ZHEN MTC MULTIMEDIA CO.,LTD

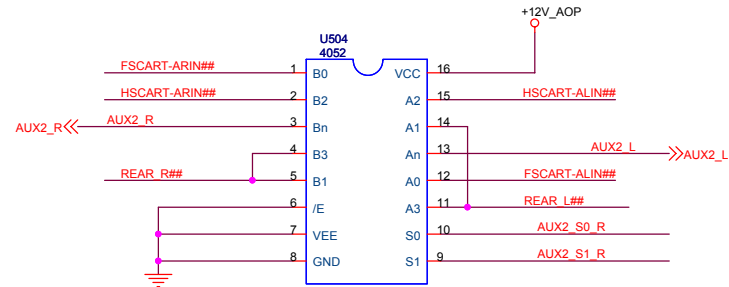
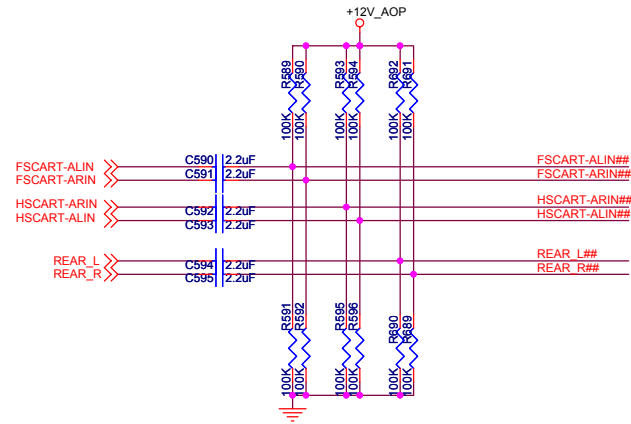


Design: Li XiangHong	MODEL: MSDV2601	TITLE: RTC(optional)
Checked:	PART NO.:	DWG NO.MSDV2601-YL01-01
Apprd:	SHEET: 11 OF 13	VER: B
SHEN ZHEN MTC MULTIMEDIA CO.,LTD		

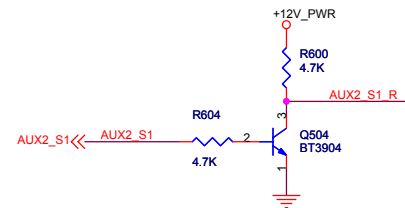
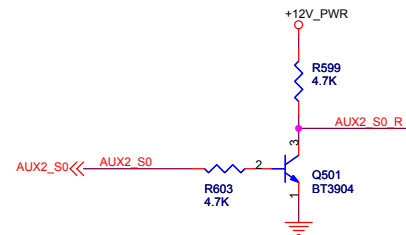
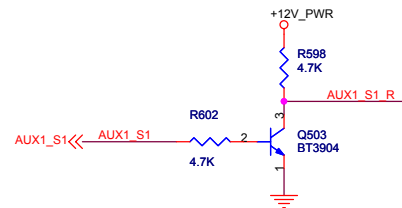
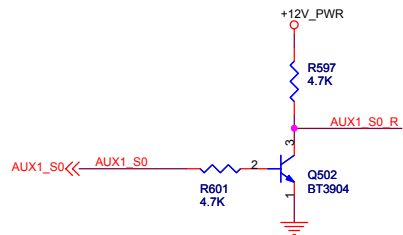




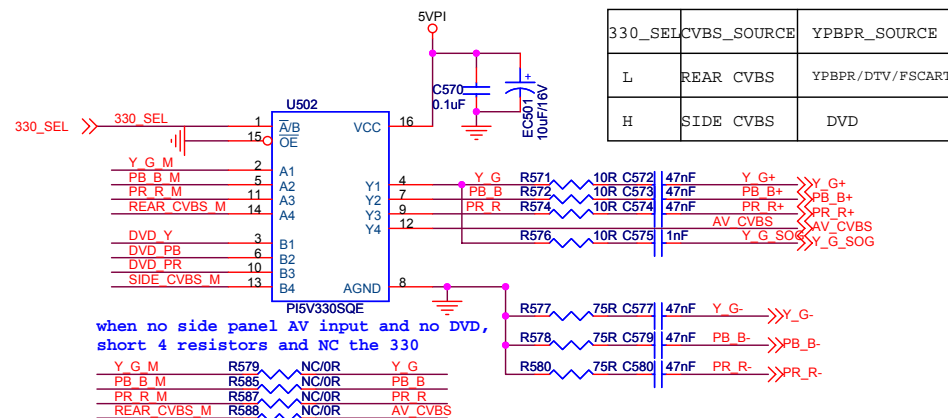
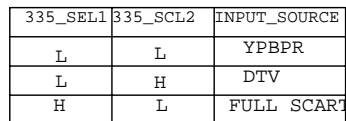
AUX1_S1	AUX1_S0	SOURCE
L	L	SIDE AV INPUT
L	H	DVD INPUT
H	L	PC INPUT
H	H	YPBPR INPUT



AUX2_S1	AUX2_S0	SOURCE
L	L	Rear AV input
L	H	HALF SCART
H	L	Rear AV input
H	H	FULL SCART

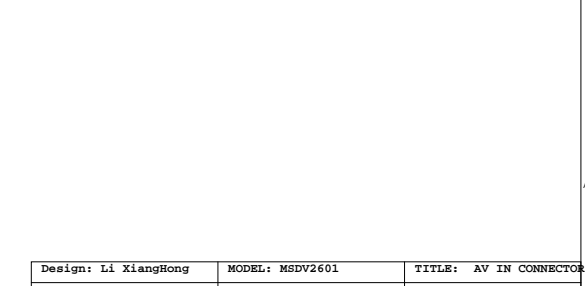
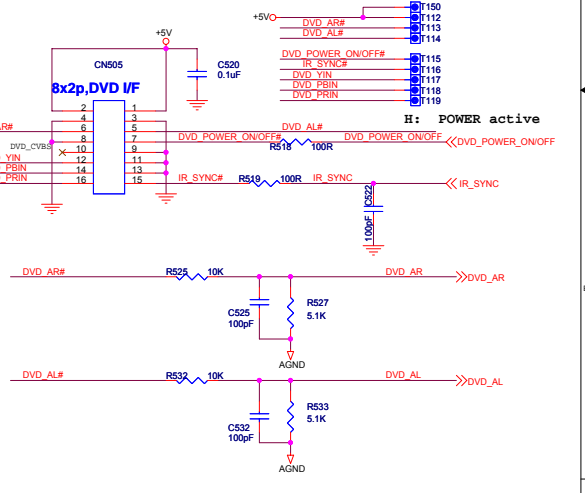
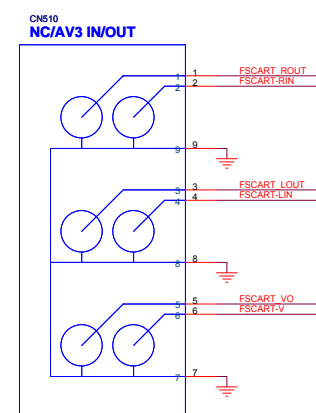
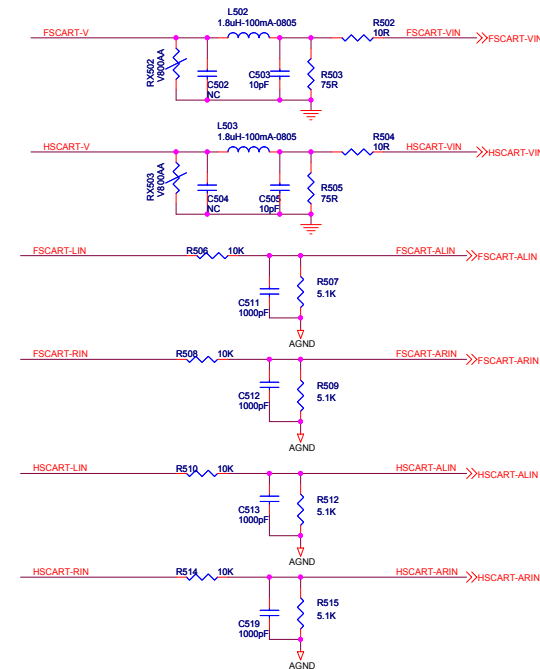
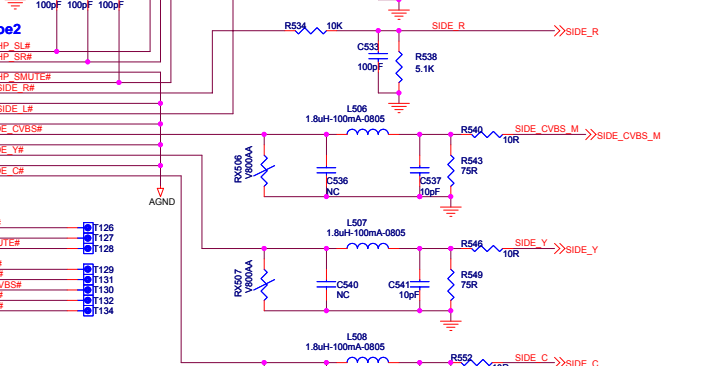
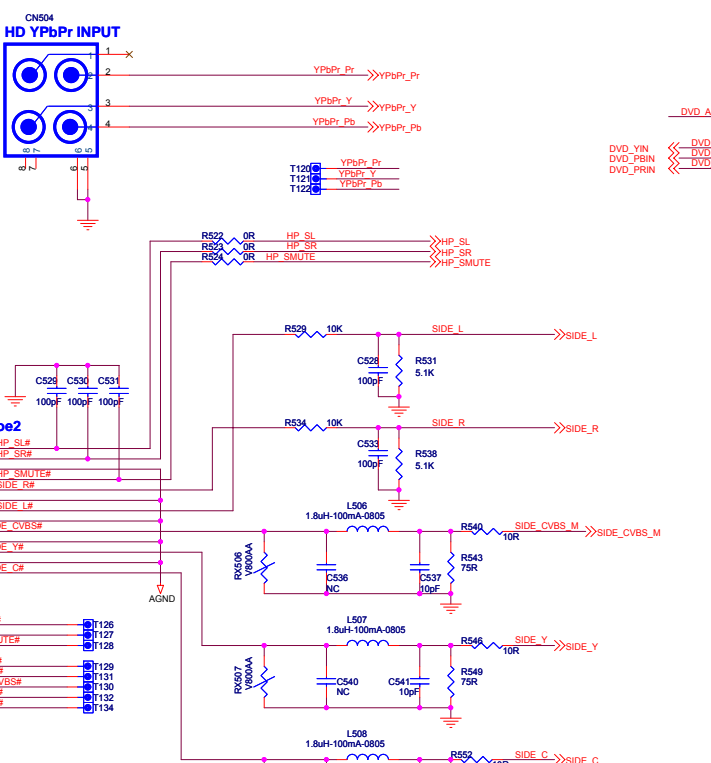
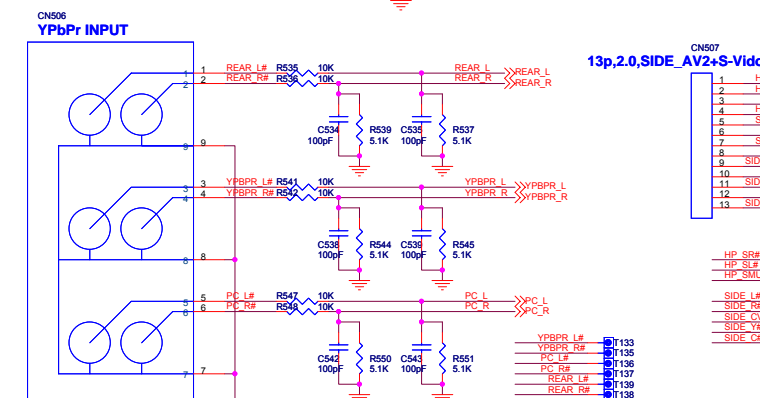
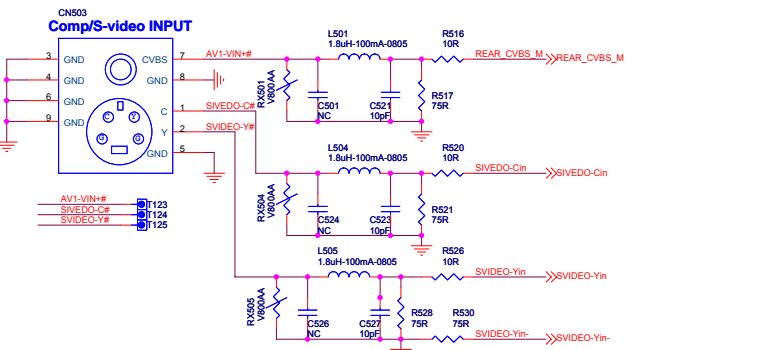
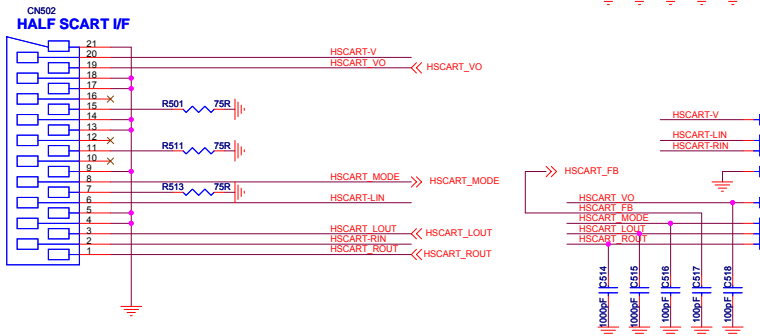


Design: Li XiangHong	MODEL: MSDV2601	TITLE: AUDIO IN SW
Checked:	PART NO.:	DWG NO.MSDV2601-YL01-01
Apprd:	SHEET: 9 OF 13	VER: B
SHEN ZHEN MTC MULTIMEDIA CO.,LTD		



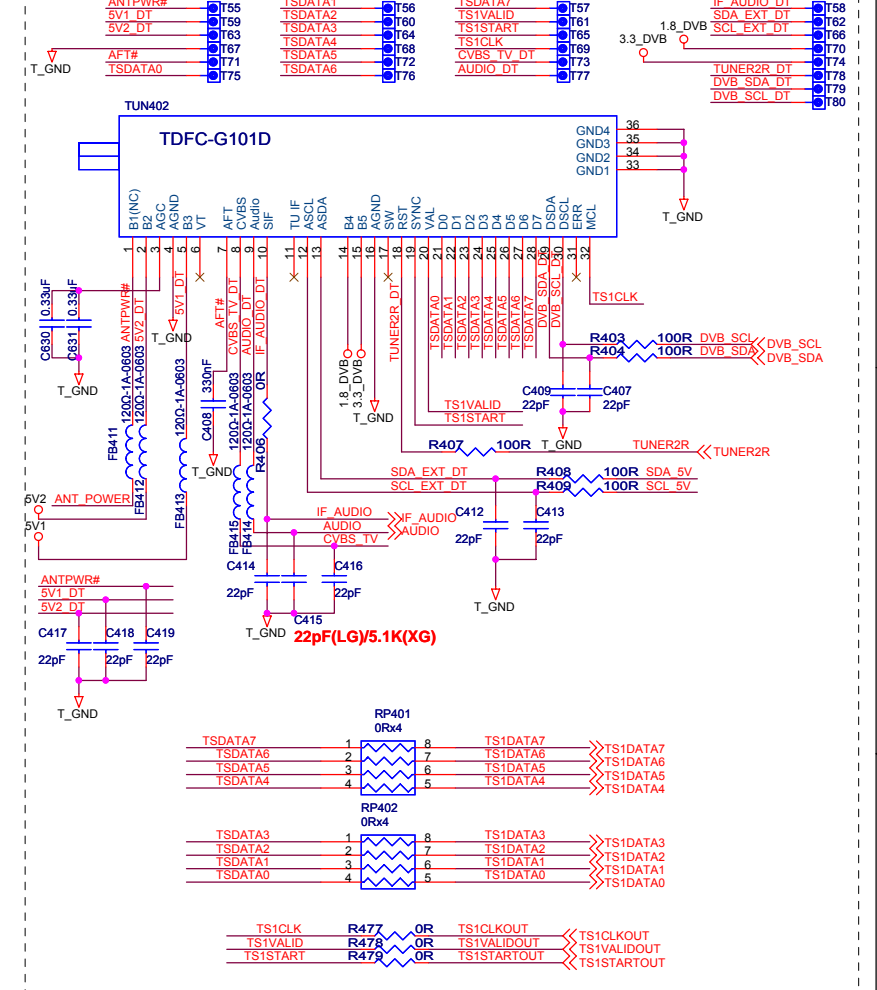
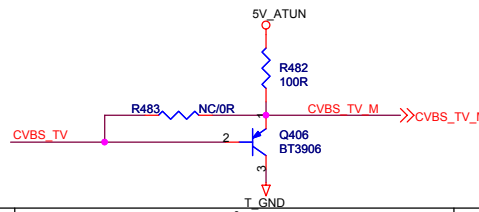
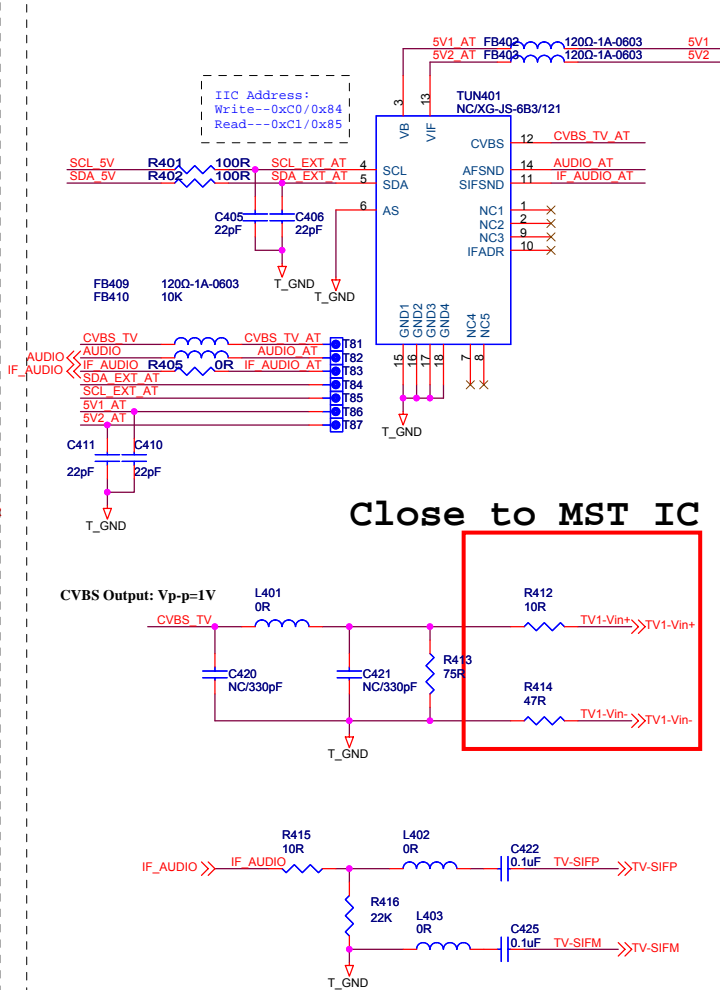
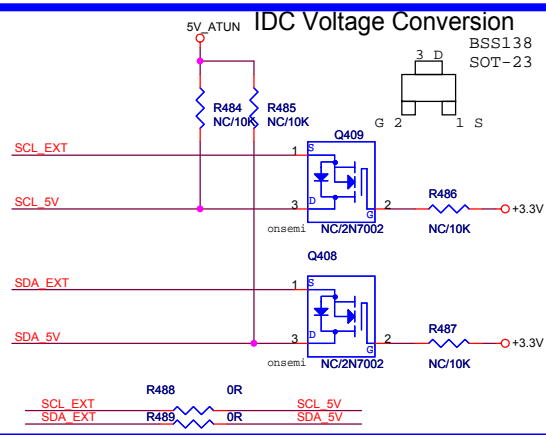
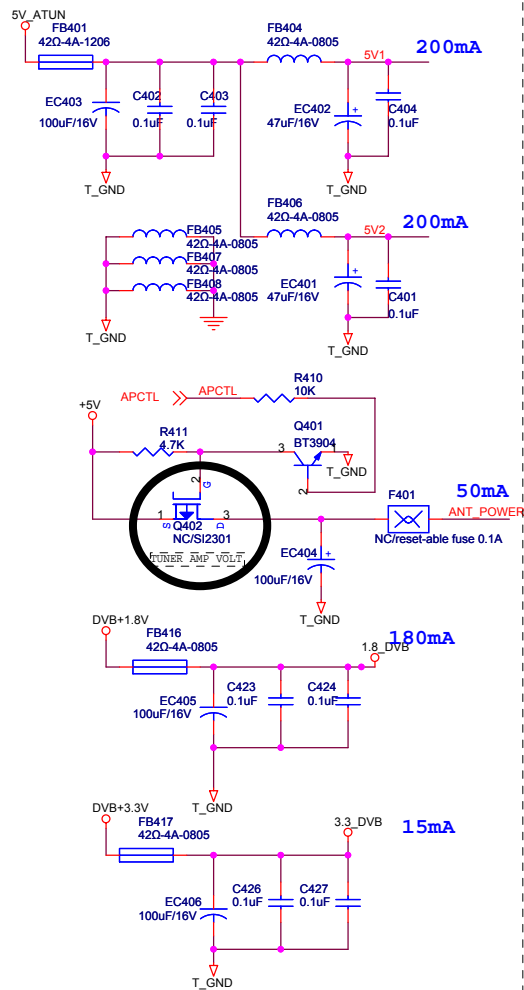
330_SEL	CVBS_SOURCE	YPBPR_SOURCE
L	REAR CVBS	YPBPR/DTV/FSCART
H	SIDE CVBS	DVD

Design: Li XiangHong	MODEL: MSDV2601	TITLE: VIDEO IN SW
Checked:	PART NO.:	DWG NO.MSDV2601-YL01-01
Apprd:	SHEET: 8 OF 13	VER: B
SHEN ZHEN MTC MULTIMEDIA CO.,LTD		



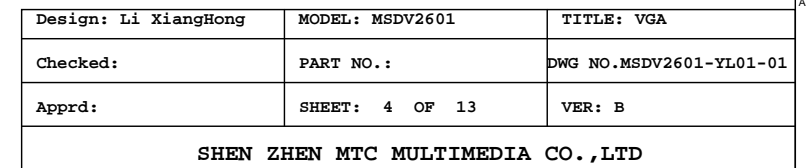
Design: Li XiangHong	MODEL: MSDV2601	TITLE: AV IN CONNECTOR
Checked:	PART NO.:	DWG NO.MSDV2601-YL01-01
Apprd:	SHEET: 7 OF 13	VER: B
SHEN ZHEN MTC MULTIMEDIA CO.,LTD		

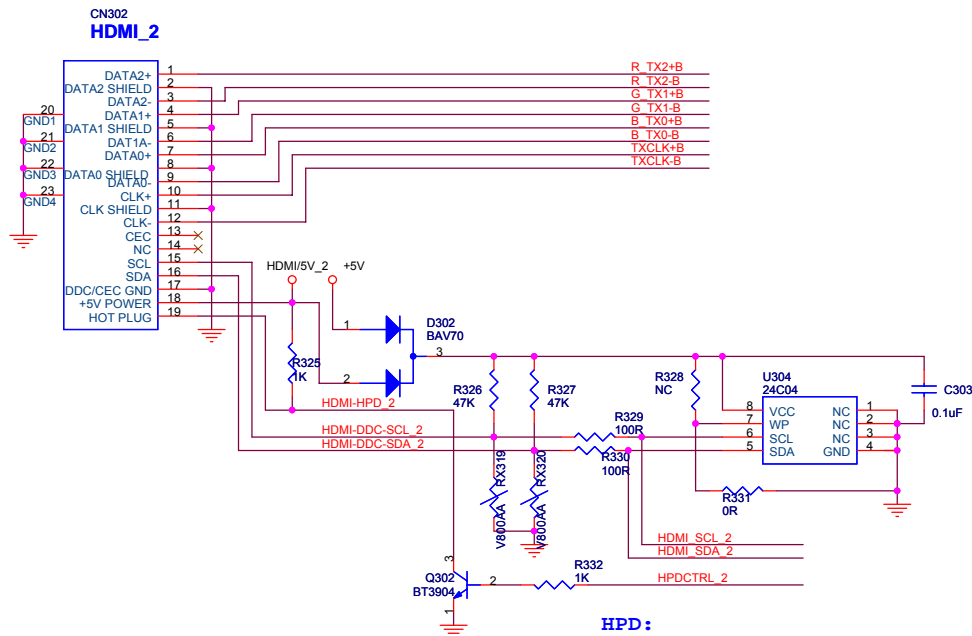
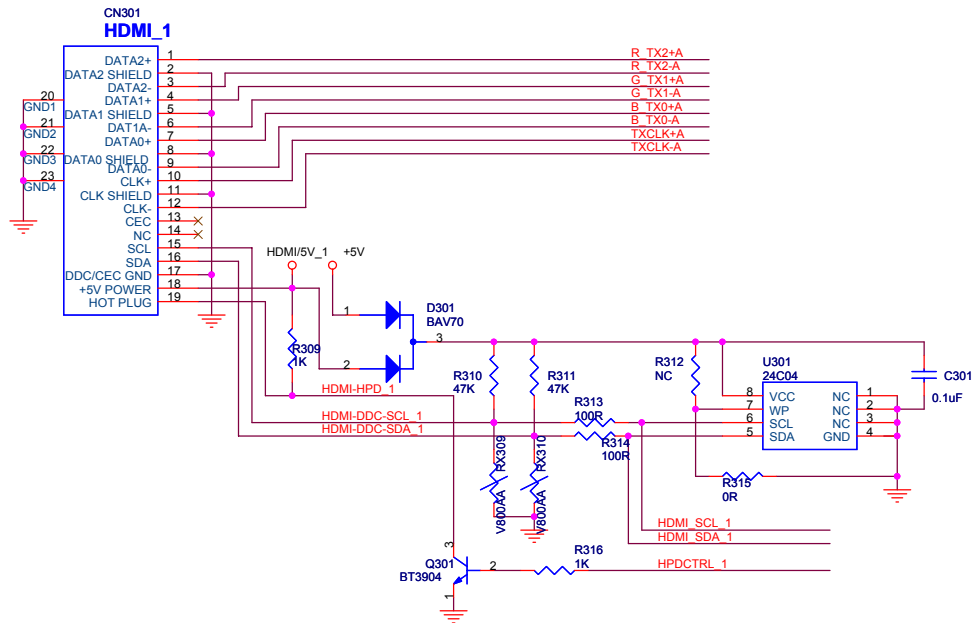




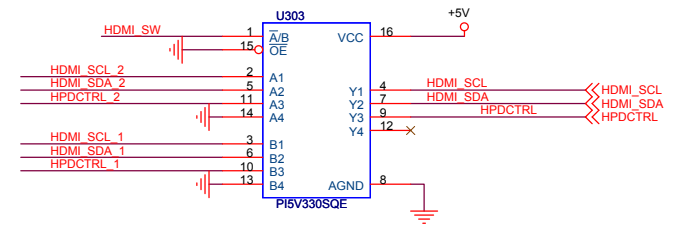
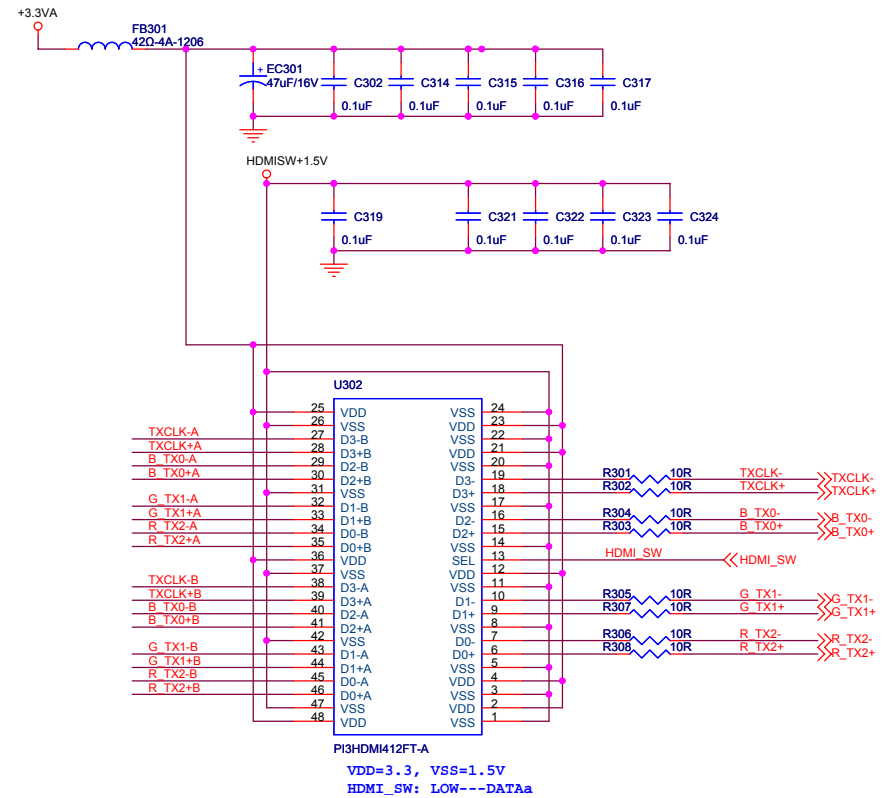
Design: Li XiangHong	MODEL: MSDV2601	TITLE: TUNER
Checked:	PART NO.:	DWG NO. MSDV2601-YL01-01
Apprd:	SHEET: 5 OF 13	VER: B
SHEN ZHEN MTC MULTIMEDIA CO.,LTD		



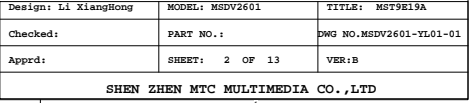




HPD:  
HIGH---Unavailable.  
LOW---Available

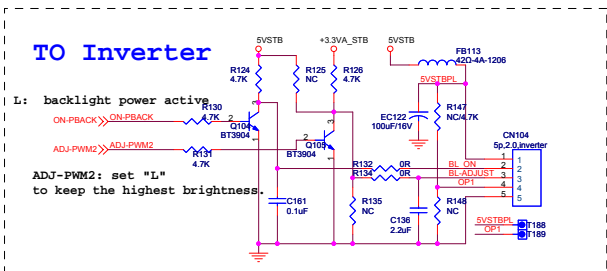
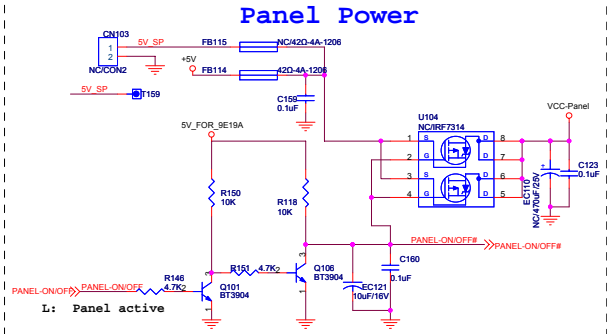
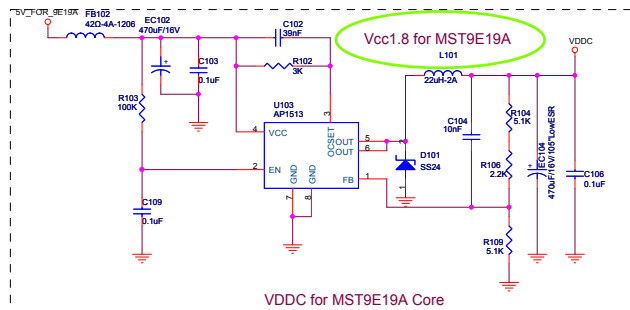
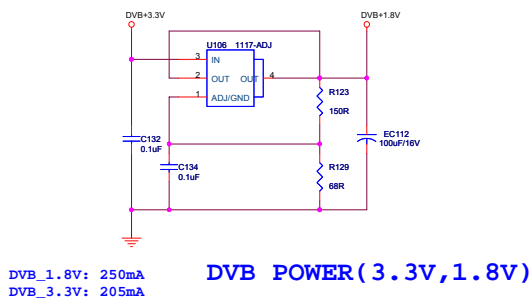
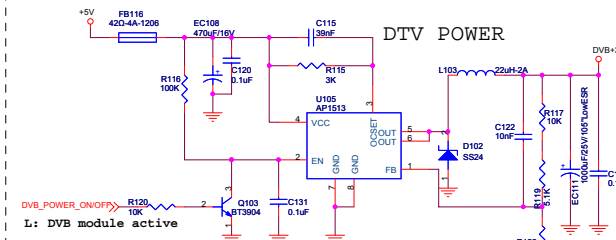
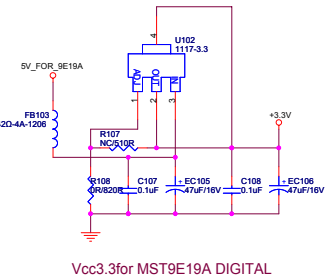
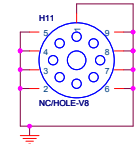
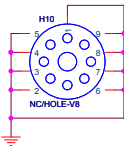
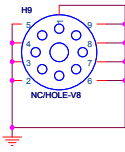
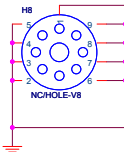
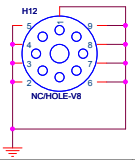
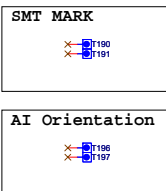
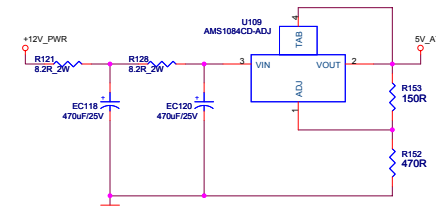
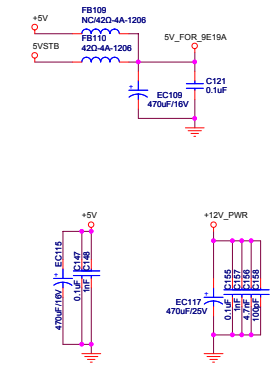
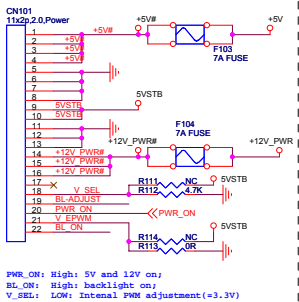
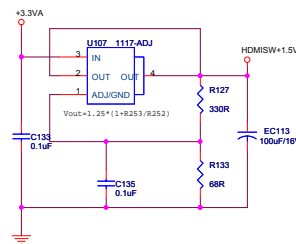
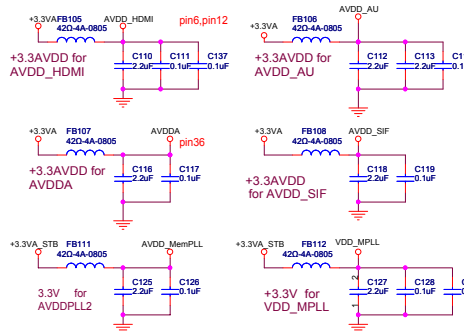
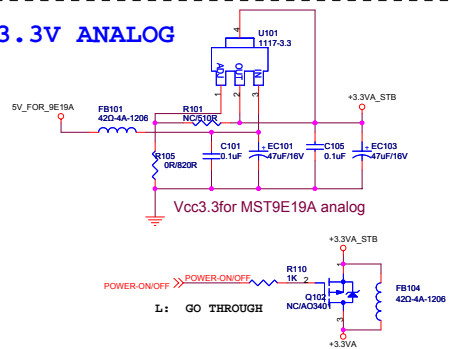


Design: Li XiangHong	MODEL: MSDV2601	TITLE: HDMI
Checked:	PART NO.:	DWG NO. MSDV2601-YL01-01
Apprd:	SHEET: 3 OF 13	VER: B
SHEN ZHEN MTC MULTIMEDIA CO.,LTD		



	LOGAH26'	LOGAH32'	DARFON26'	DARFON32'
5VSTB	1A	1.5A	1.5A	1.5A
5V	4A	4A	4A	4A
12V	4A	3A	3A	3A

DC POWER CAPACITY:(Left diagram);  
When Standby, whole system <1W when I5VSTB<0.1A.



Design: Li XiangHong	MODEL: MSDV2601	TITLE: DC POWER
Checked:	PART NO.:	DWG NO. MSDV2601-YL01-01
Apprd:	SHEET: 1 OF 13	VER: B
SHEN ZHEN MTC MULTIMEDIA CO.,LTD		

Schematics



BlockDiagram



Design: Li XiangHong	MODEL:MSDV2601	TITLE: Cover page
Checked:	PART NO.:	DWG NO.: MSDV2601-YL01-01
Apprd:	SHEET: 13 pages	VER: B

SHEN ZHEN MTC MULTIMEDIA CO.,LTD

QR-RD-016A



- Change List:
- 1). R119 4.7K -> 5.1K:
  - 2). Swap R349 and R350(VGA TX & RX)
  - 3). Change the value of R277,R278, R279 to select the LVDS format
  - 4). Change the ZR39161 reset from HW reset to SW reset.
  - 5). Change the SW MUTE logic
  - 6). Change the Audio input port.---Swap DTV and rear av input
  - 7). Combine the AMP and Headphone channel
  - 8). Add CVBS output from ZR39161
  - 9). Bypass the YPbPr signals.
  - 10). Add the cut off circuits for DVB IR when non-DVB status
  - 11). Change the Mute control circuits.
  - 12). Change the I2C and EEPROM power from 5V to 3.3V
  - 13). Remove WP of EEPROM.

- 0601 changes:
- 1). Change pull up power for Tuner I2C level shift from DVB 3.3V to main 3.3V.
  - 2). Swap the L/R of earphone.
  - 3). R715 and R721 NC
  - 4). R147 NC(from 4.7K)
  - 5). R437: NC-->12K, R440: NC-->75K, R441: NC-->1K, Q403: NC-->3904, R439: 0R-->NC
  - 6). Bypass the OP part to improve the frequency response and crosstalk.
  - 7). Change audio output decoupling capacitors from 2.2uF to 10uF.
  - 8)\_. Connect the EC522 to small singal GND,
  - 9). Change the R121, R128 from 10R to 8.2R(vertical).
  - 10). Remove L519, Add R611(10R), Change the EC503 to 470uF.

- B VS. A:
- 1). Change the value of R722 to NC
  - 2). Add the option for US type.
  - 3). Swap the SCL and SDA of VGA EDID EEPROM
  - 4). Remove R722 for Keypad.
  - 5). Change the value of R202 from 10K to 5.1K for SCART detection.
  - 6). Remove the voltage shift circuits.
  - 7). Change the value of FB410 to 10K,C415 to 5.1K when XuGuang Tuner used.
  - 8). Remove the Earphone socket on board.
  - 9). Change the EC111 and EC104 to LowESR capacitors.
  - 10). Change the 5V supply for panel to unify the 26/32
  - 11). Swap the L.R from side AV.
  - 12). Swap the USB connector.

- C Vs B:
- 1). Change the value of R448 and R473 from 200R to 390R.
  - 2). Change the value of EC407 from 100uF to 220uF/16V and change the package.
  - 3). Change the value of R727 from 10K to 2,2K.

Title			
<Title>			
Size	Document Number		Rev
A	<Doc>		<RevCode>
Date:	Friday, July 27, 2007		Sheet 1 of 1