

330n K 275V-
4360 MKP X2

436D MKP X2
330n K 275V-

2J 474J 08
SIC 460S 11

QHAD01248
DW08195

5W0.150J

HE105°C (M)

561800G
DW08195

DONG YANG E&P
energy & power solution
c RU[®] us CB

FOR FSB015
FOR CONTINUED PROTECTION AGAINST RISK OF FIRE
FOR FSB015
MATCH ONLY WITH SAME TYPE & RATING OF FUSE.
SECURITE CONTRE LES INCENDIES PEMPLOER
EMET TYPE VALEUR CORANT.

HOT

COLD

v44-00195A



QHADO1248
DW08195

2J 474J 08
SIC 460S 11

620180S

330n K 275V~

HE 105°C (M)

OK
66AH00066
DW08195

1 20 J43CV
3EL MKP

66AH00064
DW08195

HOT

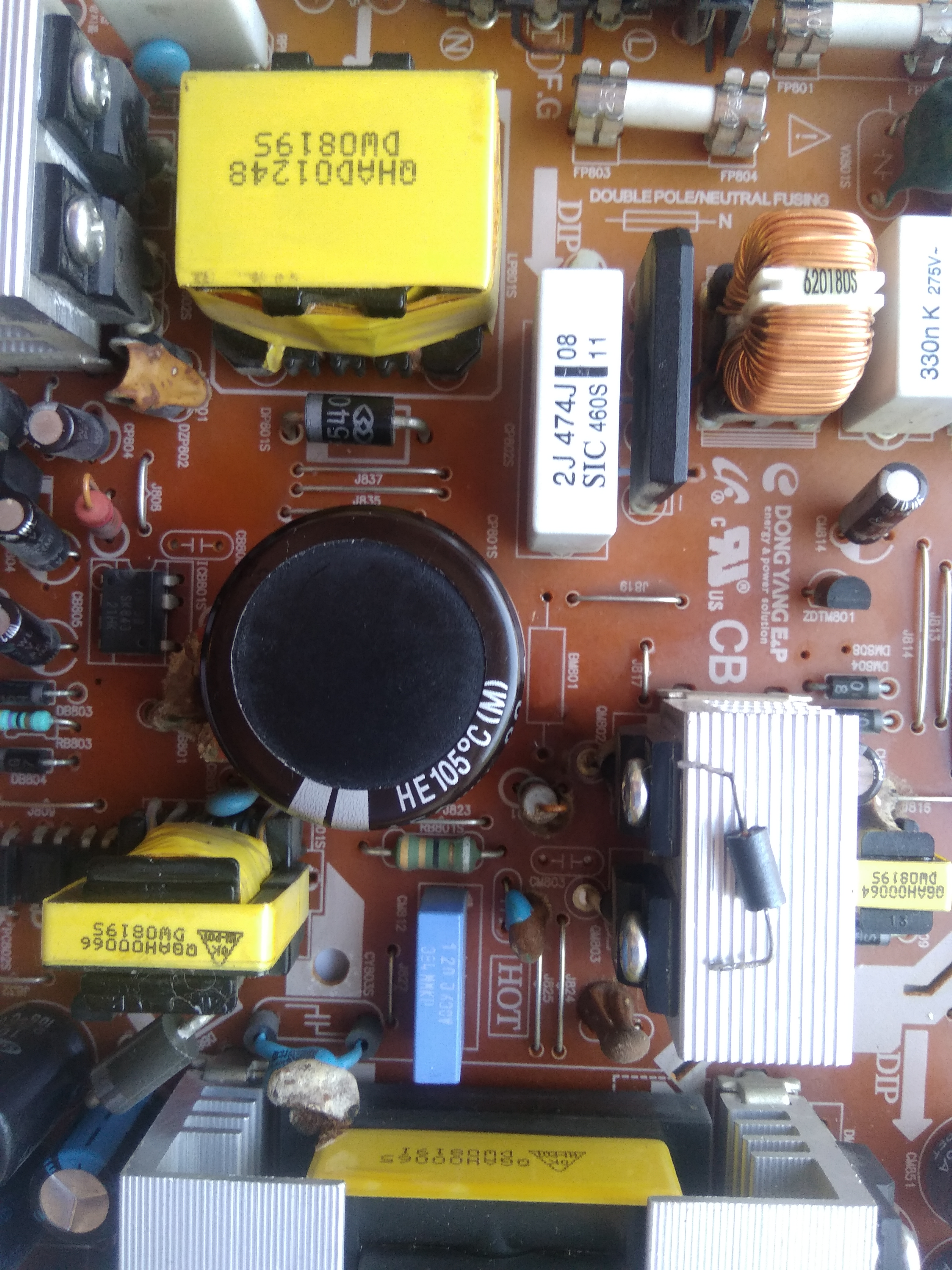
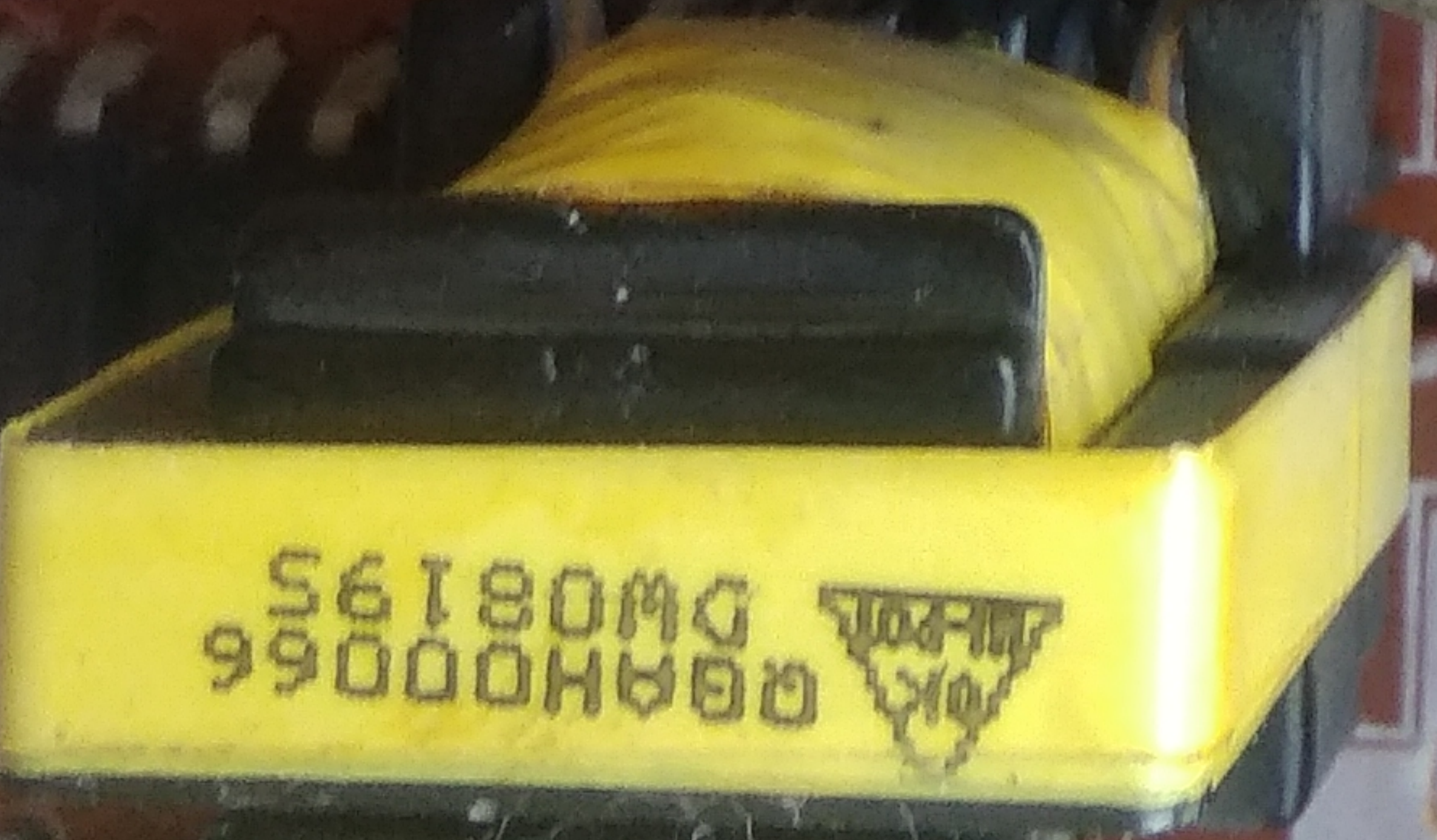
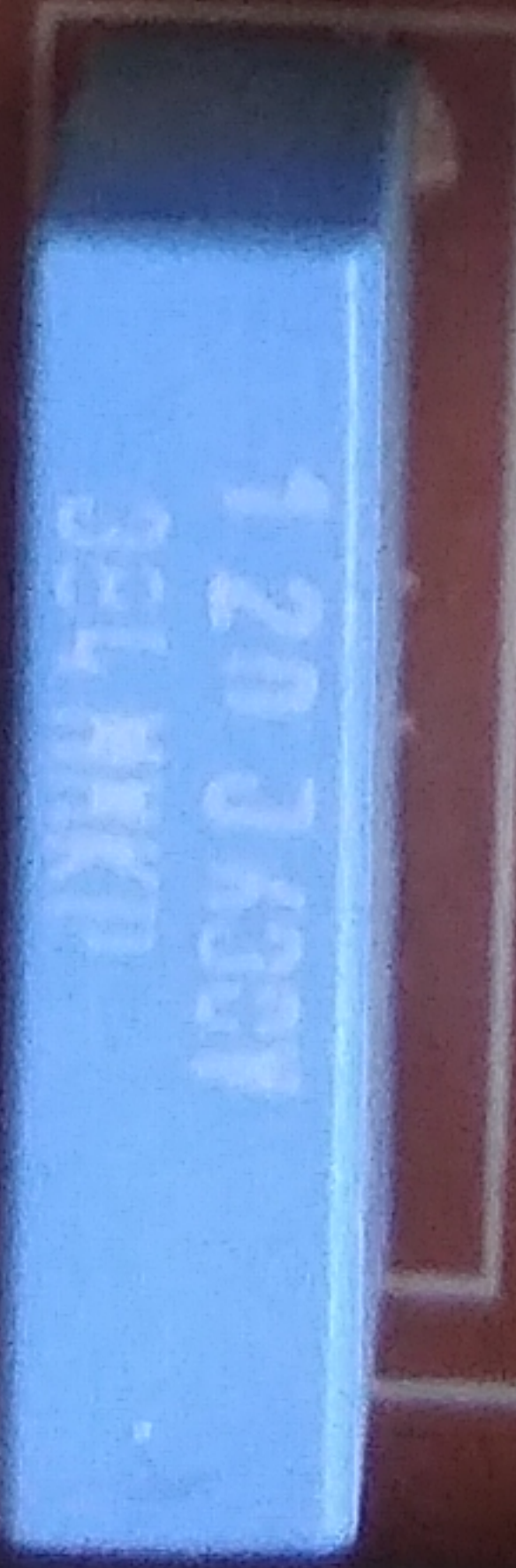
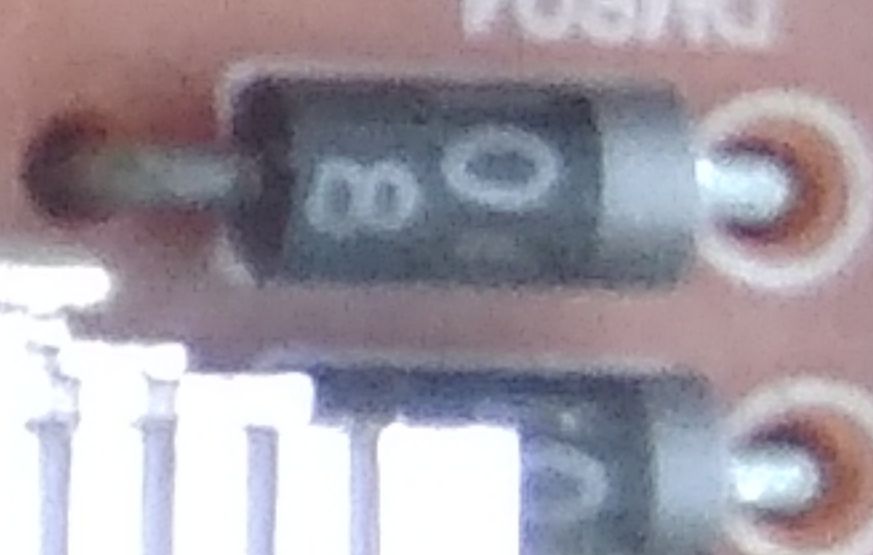
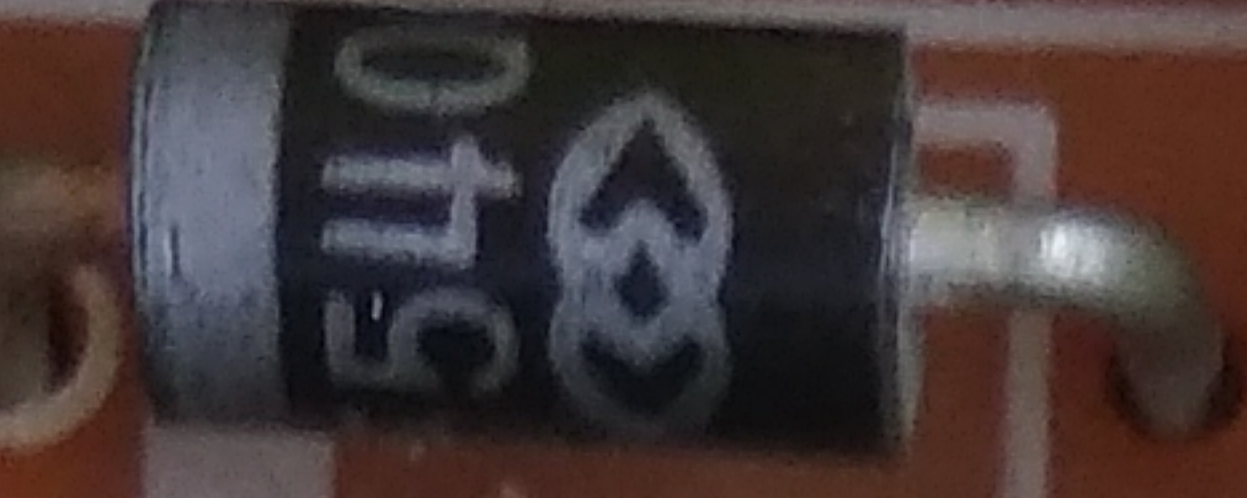
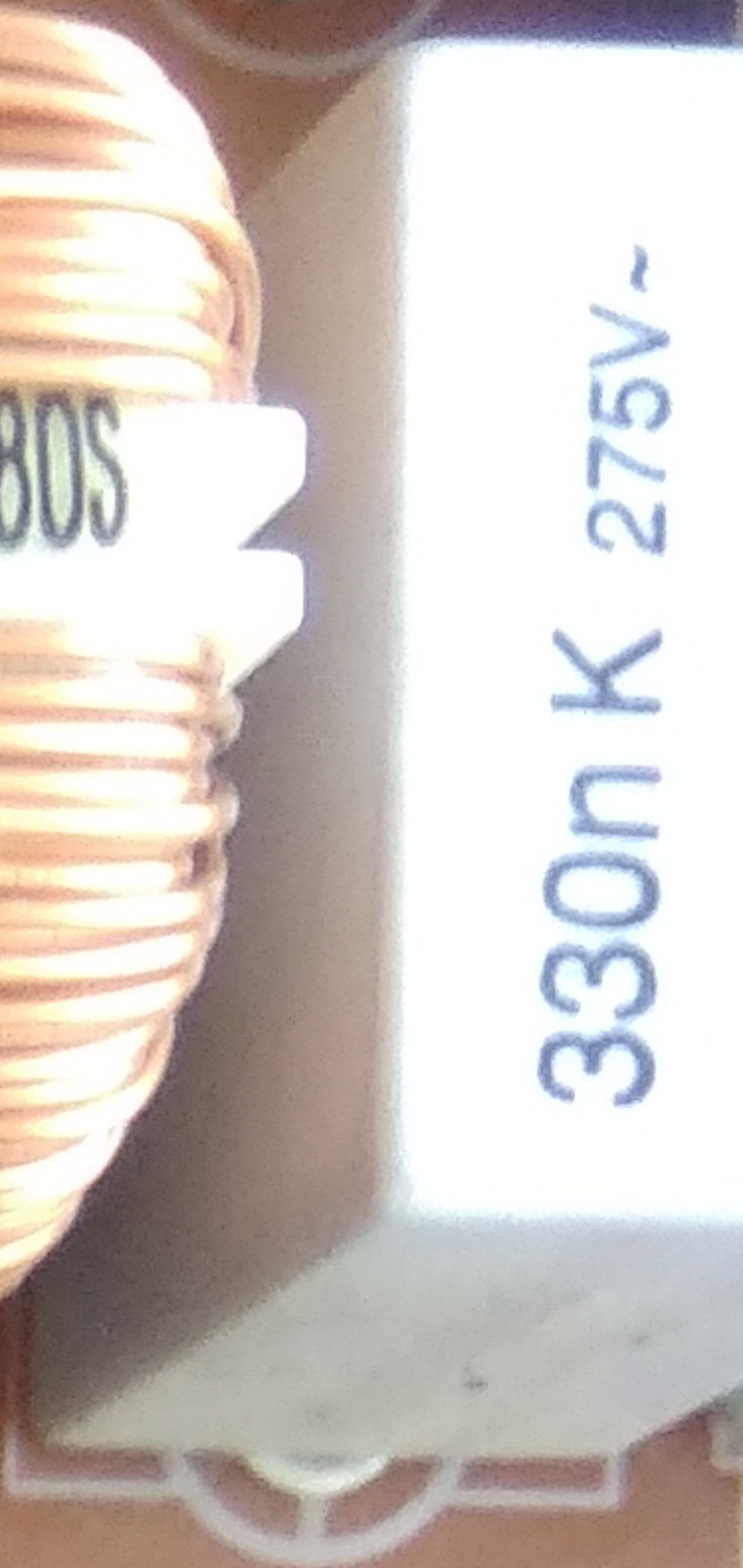
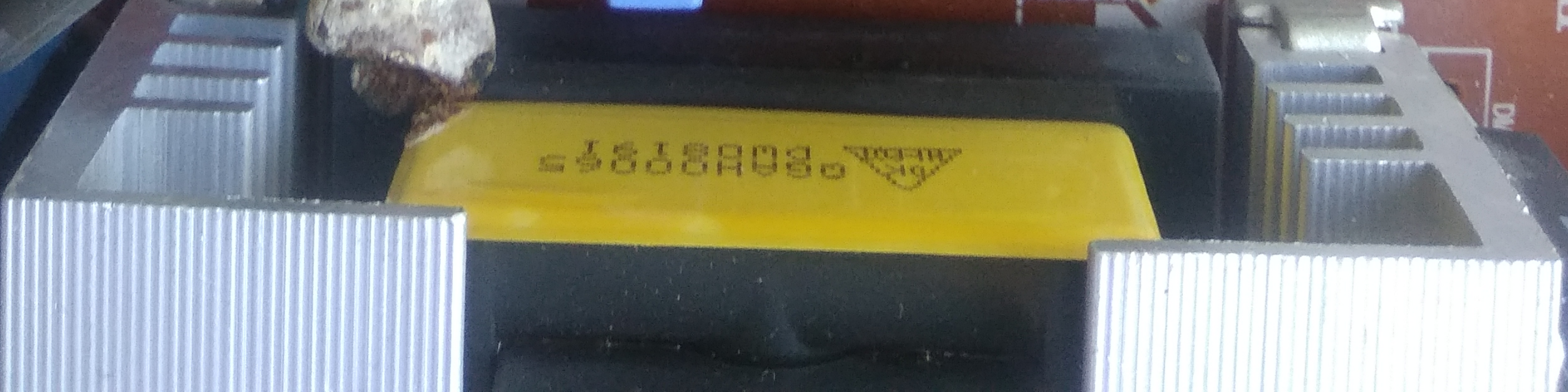
DONGYANG E&P
energy & power solution
C PA US CB

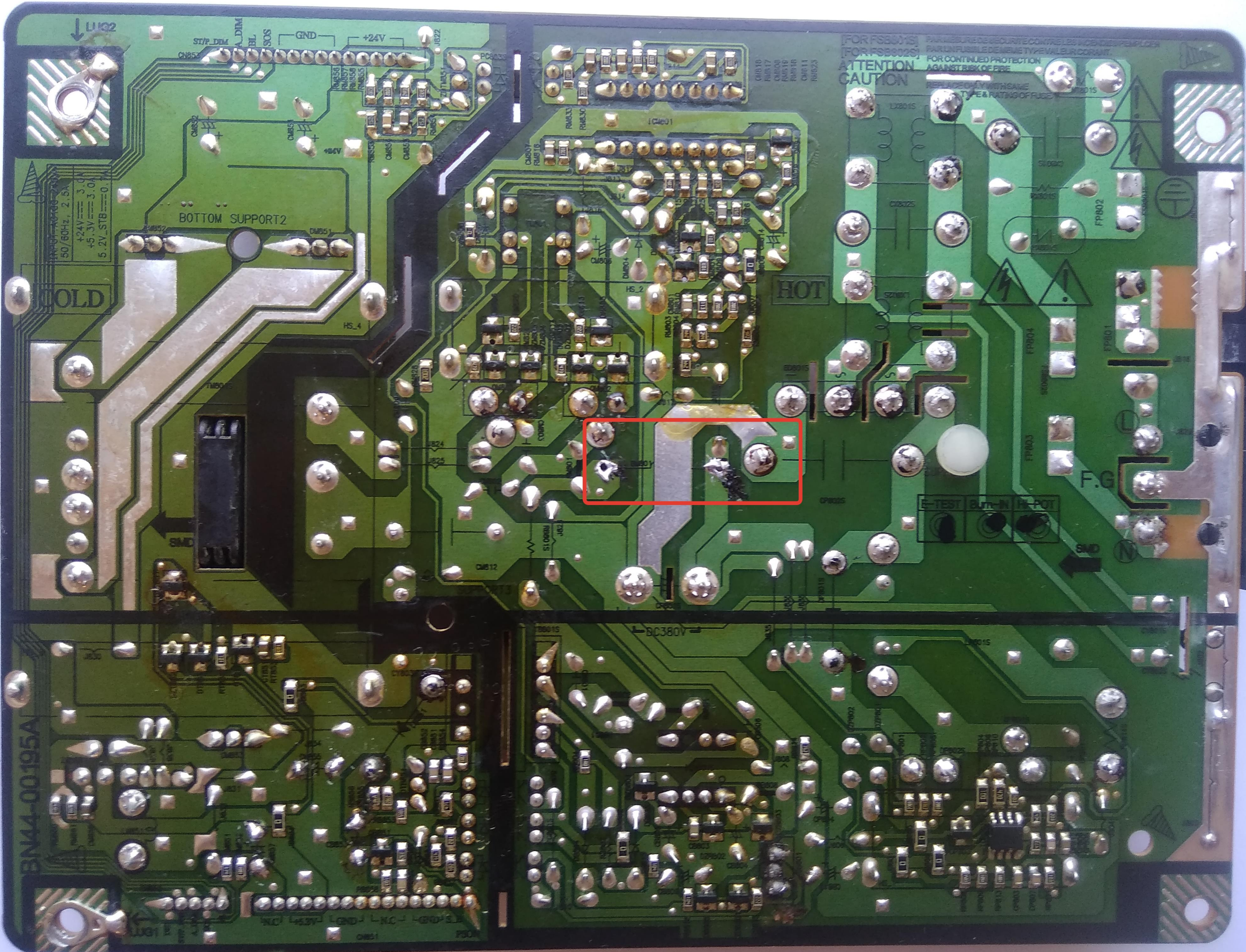
DOUBLE POLE/NEUTRAL FUSING

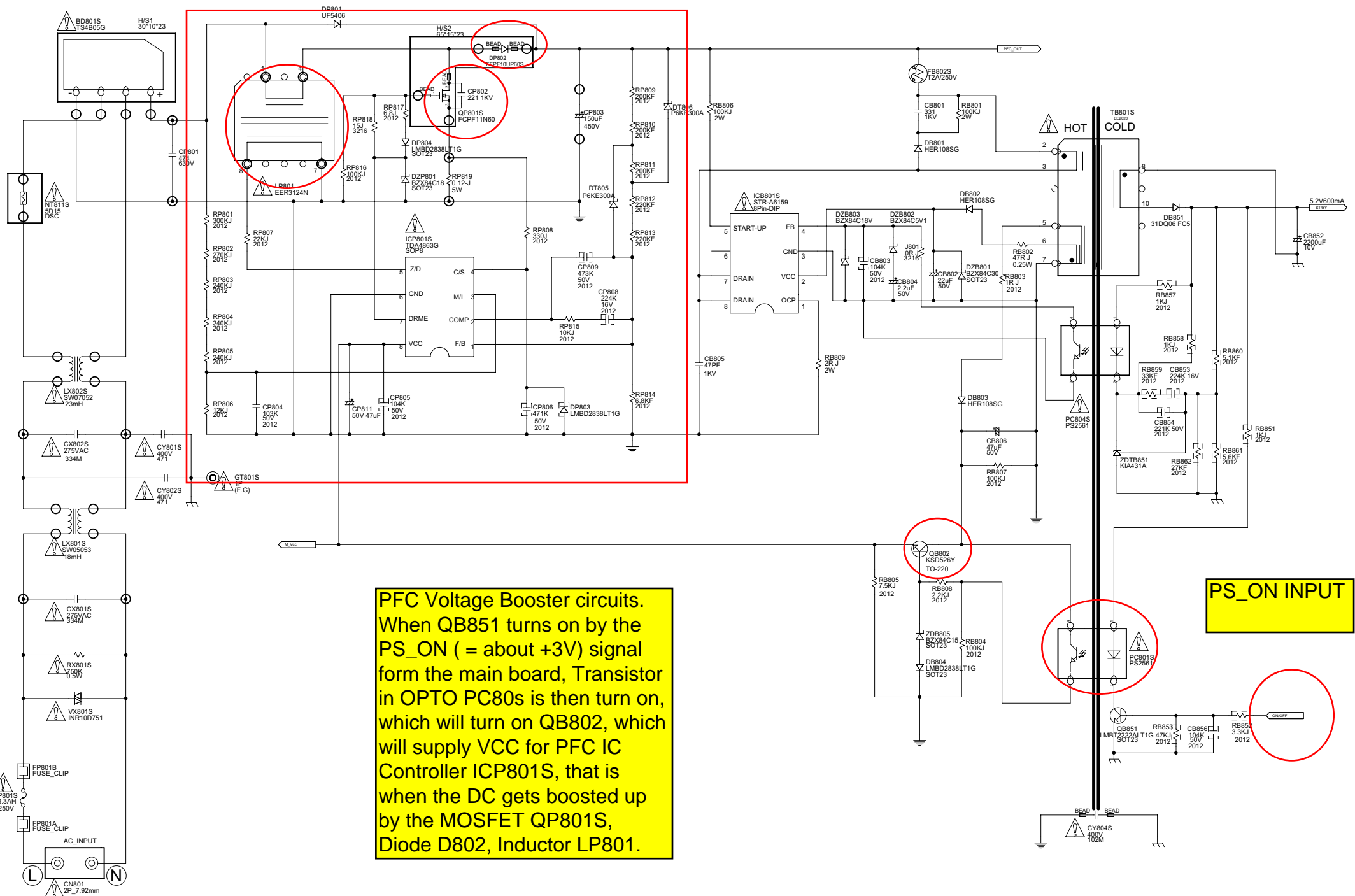


DIP

DIP





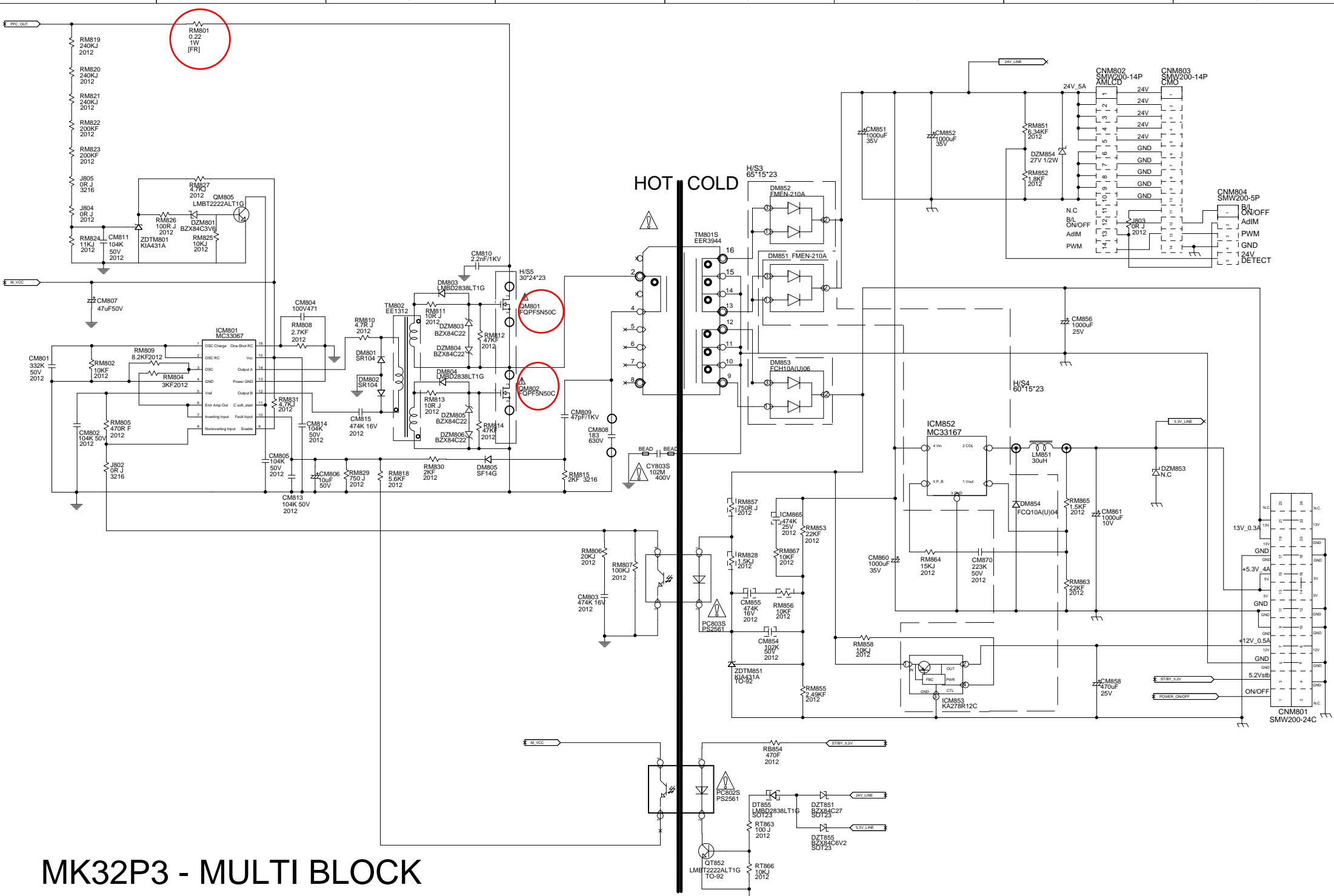


PFC Voltage Booster circuits.
 When QB851 turns on by the PS_ON (= about +3V) signal from the main board, Transistor in OPTO PC80s is then turn on, which will turn on QB802, which will supply VCC for PFC IC Controller ICP801S, that is when the DC gets boosted up by the MOSFET QP801S, Diode D802, Inductor LP801.

PS_ON INPUT

MK32P3 - PFC,S/B BLOCK
 DONGYANG E&P INC.

Rev.	DATE	BY	CHK	APP



MK32P3 - MULTI BLOCK

DONGYANG E&P INC.

Titb	mk32p3 VE_MULTI	Titb	
Size		Rev.	
FILE		DATE	
TITLE		TITLE	
TITLE		TITLE	
TITLE		TITLE	