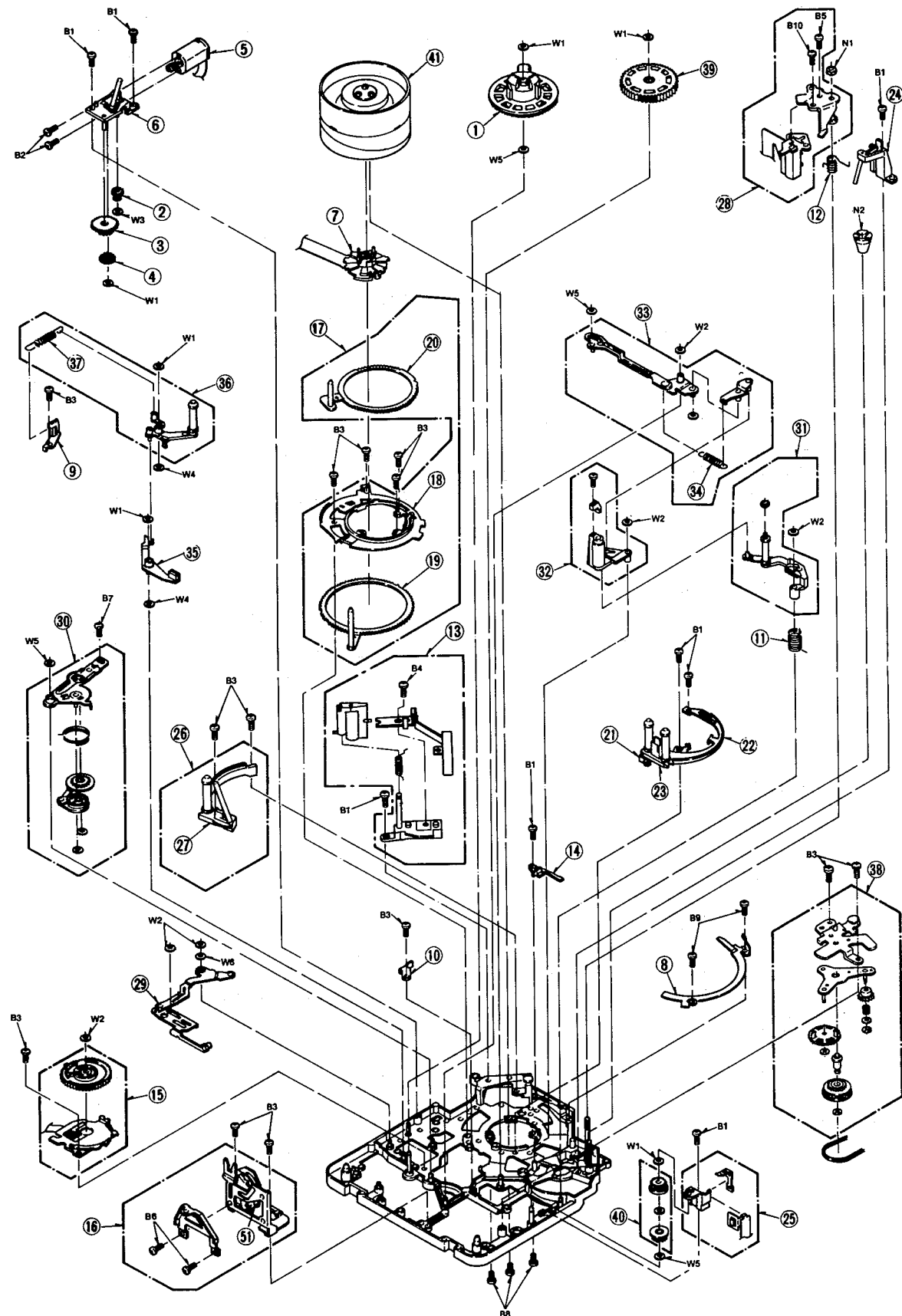


SECTION 4

EXPLODED VIEWS & PARTS LIST

4-1. EXPLODED VIEWS & MECHANICAL REPLACEMENT PARTS LIST

① VTR MECHANISM SECTION (1)

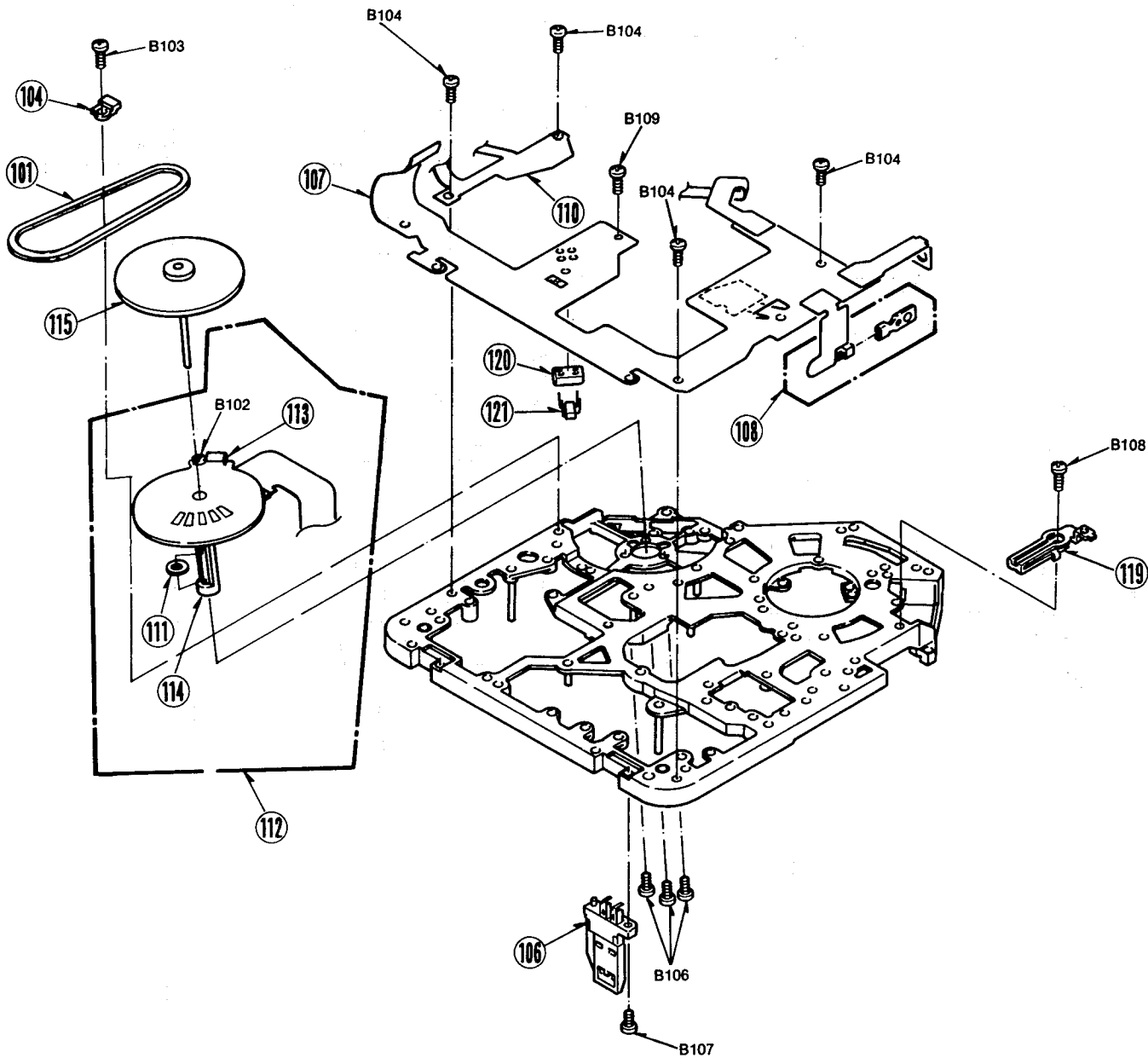



Note: 1. * Be sure to make your orders of replacement parts according to this list.
2. IMPORTANT SAFETY NOTICE
Components identified with the mark < ! > have the special characteristics for safety. When replacing any of these components, use only the same type.

Ref. No.	Part No.	Part Name & Description	Pcs	Remarks
1 (1)	VDR0226	REEL BASE (S)	1	
2 (1)	VDG0821	BRAKE GEAR (A)	1	
3 (1)	VDG0823	BRAKE GEAR (B)	1	
4 (1)	VDG0822	BRAKE GEAR (C)	1	
5 (1)	VEM0417	LOADING MOTOR (1) U.	1	
6 (1)	VXA4527	MOTOR HOLDER U.	1	
7 (1)	VEK7073	RT CONNECTOR U.	1	
8 (1)	VMA8502	T-RING SLIDER	1	
9 (1)	VMA8505	TEN-REG. SPRING HOOK	1	
10 (1)	VMA8532	PENDULUM ARM HOLDER	1	
11 (1)	VMB2362	T3 ARM SPRING	1	
12 (1)	VMB2365	AC HEAD SPRING	1	
13 (1)	VXA5306	S-GUIDE STAND U.	1	
14 (1)	VMD1851	T-BOAT GUIDE	1	
15 (1)	VSR0096	MODE SWITCH U.	1	
16 (1)	VXA5001	LOCK BASE U.	1	
17 (1)	VXA4517	LOADING RING U.	1	
18 (1)	VMD1824	RING GUIDE	1	
19 (1)	VXA4518	T-RING U.	1	
20 (1)	VXA4519	S-RING U.	1	
21 (1)	VEK5549	LED U.	1	
22 (1)	VMD1828	T-RAIL	1	
23 (1)	VXA5260	T-BOAT U.	1	
24 (1)	VXA4528	T4 POST U.	1	
25 (1)	VXA4997	T-REEL SENSOR U.	1	
26 (1)	VXA5153	S-RAIL U.	1	
27 (1)	VXA5124	S-BOAT U.	1	
28 (1)	VXA5201	AC HEAD U.	1	
29 (1)	VXL2393	EJECT LEVER (1) U.	1	
30 (1)	VXL2401	SWING ARM U.	1	
31 (1)	VXL2431	T3 ARM (A) U.	1	

Ref. No.	Part No.	Part Name & Description	Pcs	Remarks
32 (1)	VXL2139	PINCH ARM U.	1	
33 (1)	VXL2140	PINCH DRIVE ARM U.	1	
34 (1)	VMB2363	PINCH PRESSURE SPRING	1	
35 (1)	VXL2144	PAD ARM U.	1	
36 (1)	VXL2145	TEN-REG. ARM U.	1	
37 (1)	VMB2364	TEN-REG. SPRING	1	
38 (1)	VXL2399	IDLER U.	1	
39 (1)	VXP1308	RELAY GEAR U.	1	
40 (1)	VXP1313	T-DRIVE GEAR U.	1	
41 (1)	VEG1174	CYLINDER U.	1	NV-RX10EG, 20EG
41 (1)	VEG1175	CYLINDER U.	1	EXCEPT NV-RX10EG, 20EG
51 (1)	VMB2369	LOCK SPRING	1	
B1 (1)	XQN14+B25FY	SCREW	3	
B2 (1)	XQN14+A14	SCREW	2	
B3 (1)	XQN14+B2	SCREW	13	
B4 (1)	XQN14+B3J35	SCREW	1	
B6 (1)	XQN14+CF4	SCREW	4	
B7 (1)	XQN14+C5	SCREW	1	
B8 (1)	XQN14+C35R	SCREW	3	
B9 (1)	VHD0711	SCREW	2	
B10 (1)	VHD0700	SCREW	1	
B11 (1)	VHD0699	SCREW	1	
B12 (1)	XQN14+C2	SCREW	2	
B13 (1)	VHD0707	SCREW	1	
N1 (1)	VHN0047	NUT	1	
N2 (1)	VHN0175	NUT	1	
W1 (1)	VMX2027	WASHER	6	
W2 (1)	VMX2026	WASHER	4	
W3 (1)	VMX2051	WASHER	1	
W4 (1)	XWGV12Z3G	WASHER	2	
W5 (1)	XWGV12Y3G	WASHER	3	
W6 (1)	XWGV0007	WASHER	1	
W7 (1)	VMX2366	WASHER	1	
W8 (1)	VMX2359	CUT WASHER	2	

2 VTR MECHANISM SECTION (2)

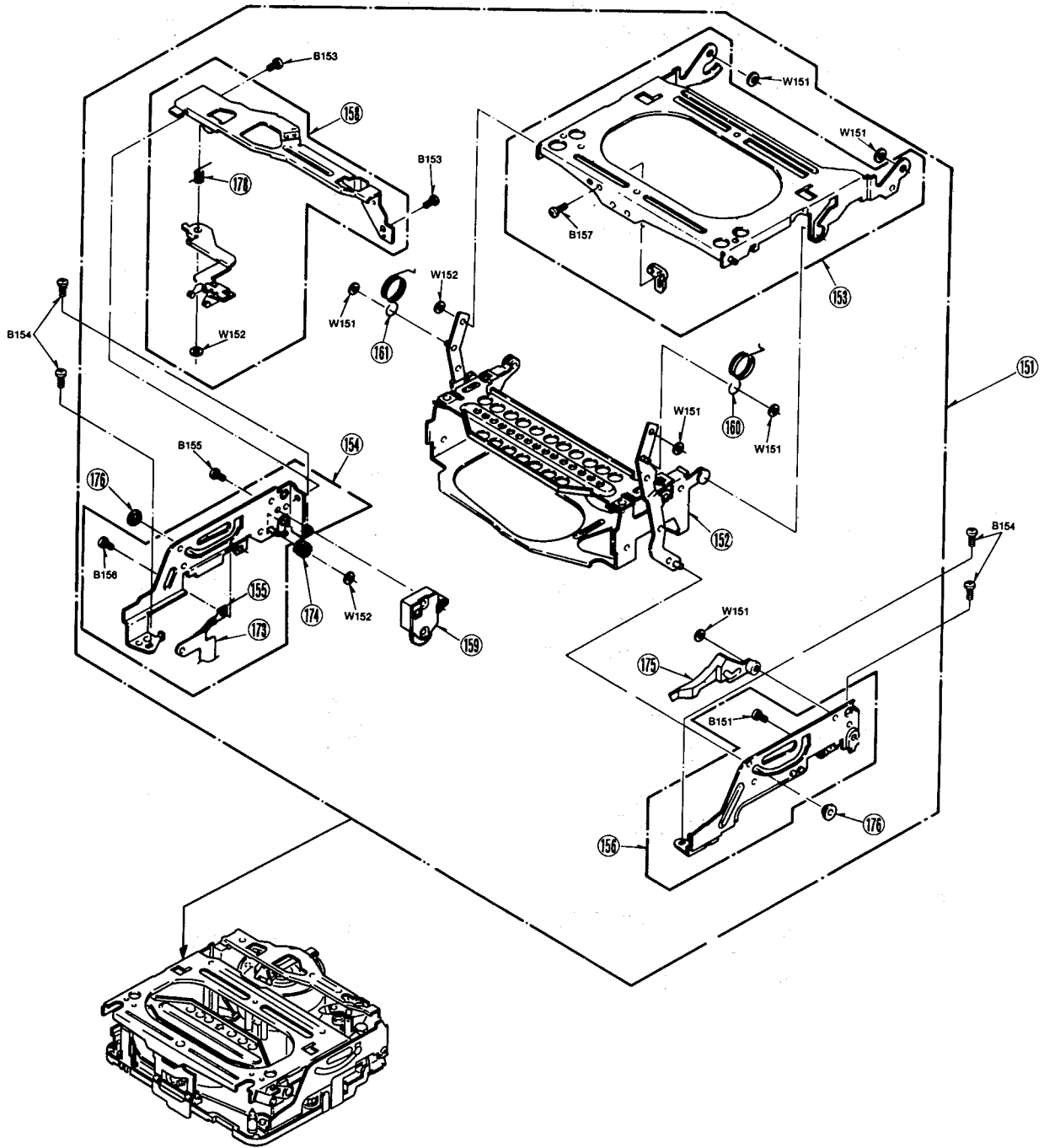



Note: 1. * Be sure to make your orders of replacement parts according to this list.
2. IMPORTANT SAFETY NOTICE
Components identified with the mark  have the special characteristics for safety. When replacing any of these components, use only the same type.

Ref.No.	Part No.	Part Name & Description	Pcs	Remarks
101 (2)	VDV0232	CAPSTAN BELT	1	
104 (2)	VMD1846	CAPSTAN STOPPER	1	
106 (2)	VSH0065	REG SAFETY SW U.	1	
107 (2)	VWJ0878	MECH. FLEXIBLE CARD	1	
108 (2)	VXA4511	PHOTO (L) U.	1	
110 (2)	VXA4997	T-REEL SENSOR U.	1	
111 (2)	VDB1129	LOWER BEARING	1	
112 (2)	VEK7314	STATOR U.	1	

Ref.No.	Part No.	Part Name & Description	Pcs	Remarks
113 (2)	VBK0059	MR HEAD	1	
114 (2)	VXD0134	HOUSING U.	1	
115 (2)	VXP1303	ROTOR U.	1	
119 (2)	VMP4923	H.A. EARTH PLATE	1	
120 (2)	VMD1842	REEL SENSOR MOUNT	1	
121 (2)	ON2170-LM	REEL SENSOR	1	
B102 (2)	VHD0593	SCREW	1	
B103 (2)	XQN14+B25FY	SCREW	1	
B104 (2)	XQN14+C2R	SCREW	4	
B106 (2)	XQN14+A3	SCREW	3	
B107 (2)	XQN14+CF4	SCREW	1	
B108 (2)	XQN14+C2	SCREW	1	
B109 (2)	VHD0875	SCREW	1	

3 VTR MECHANISM SECTION (3)

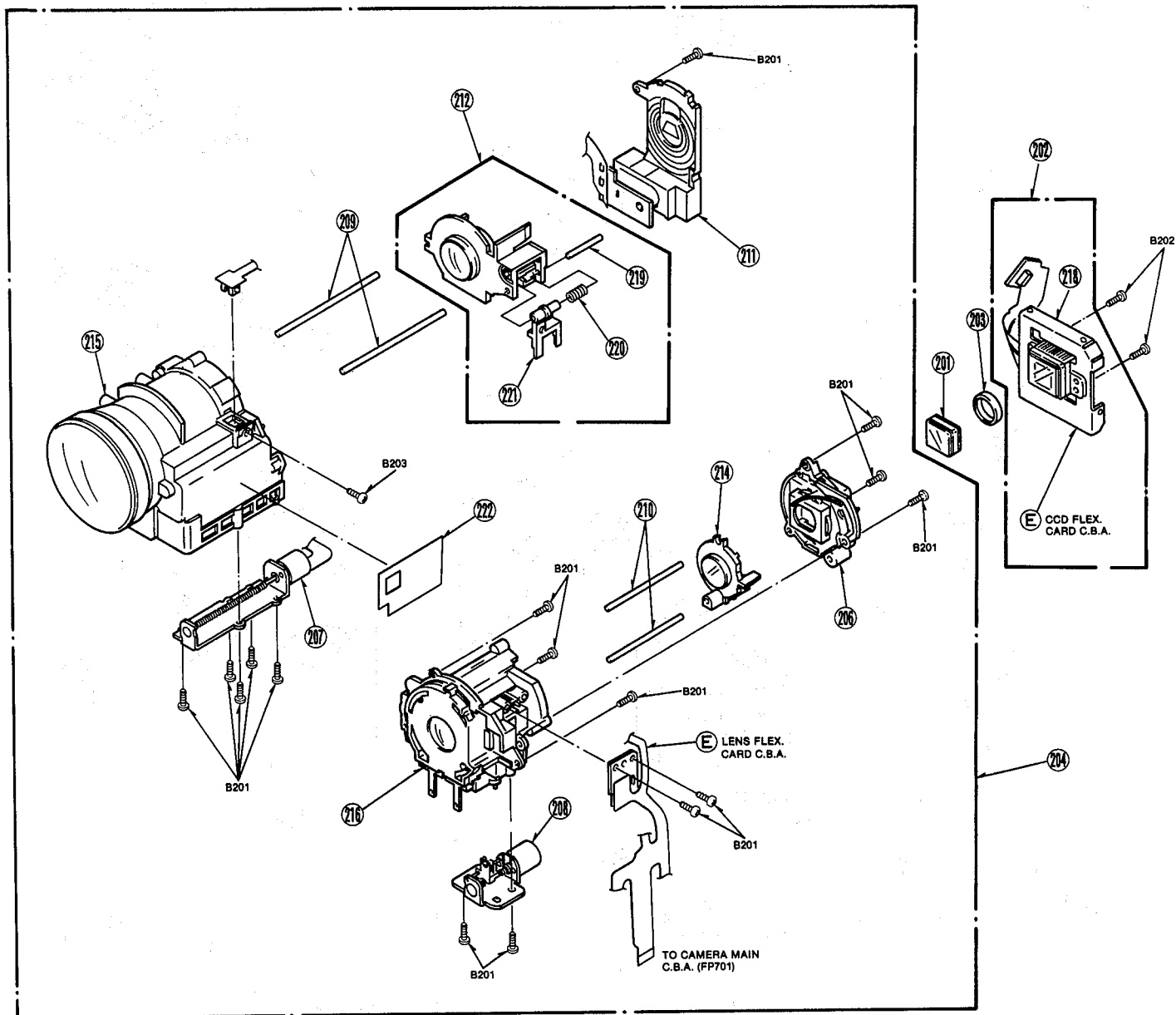


Note: 1. * Be sure to make your orders of replacement parts according to this list.
2. IMPORTANT SAFETY NOTICE
Components identified with the mark  have the special characteristics for safety. When replacing any of these components, use only the same type.

Ref.No.	Part No.	Part Name & Description	Pcs	Remarks
151 (3)	VXA5725	GARAGE U.	1	
152 (3)	VXA5199	HOLDER U.	1	
153 (3)	VXA4863	GARAGE (1) U.	1	
154 (3)	VXA4510	STAND (L) U.	1	
155 (3)	VXA4511	PHOTO (L) U.	1	
156 (3)	VXA5000	STAND (R) U.	1	
158 (3)	VXL2222	TAPE GUIDE U.	1	
159 (3)	VXP1472	DUMPER	1	
160 (3)	VMB2367	UP SPRING (R)	1	
161 (3)	VMB2368	UP SPRING (L)	1	


Ref.No.	Part No.	Part Name & Description	Pcs	Remarks
173 (3)	VWJ0548	PHOTO FLEX CARD	1	
174 (3)	VDG0827	DUMPER RELAY GEAR	1	
175 (3)	VML2580	TAPE OPEN LEVER	1	
176 (3)	VDP1406	ARM HOLDER	2	
178 (3)	VMB2498	TAPE GUIDE SPRING	1	
B153 (3)	XQN14+BF2	SCREW	2	
B154 (3)	VHD0838	SCREW	4	
B155 (3)	XQN16+AJ8	SCREW	1	
B156 (3)	XQN14+CM2	SCREW	1	
B157 (3)	XQS14+A25FZ	SCREW	1	
W151 (3)	VMX1042	WASHER	2	
W152 (3)	VMX1061	WASHER	2	
W153 (3)	XWGV0006	WASHER	3	

4 CAMERA LENS SECTION



Note: 1. * Be sure to make your orders of replacement parts according to this list.

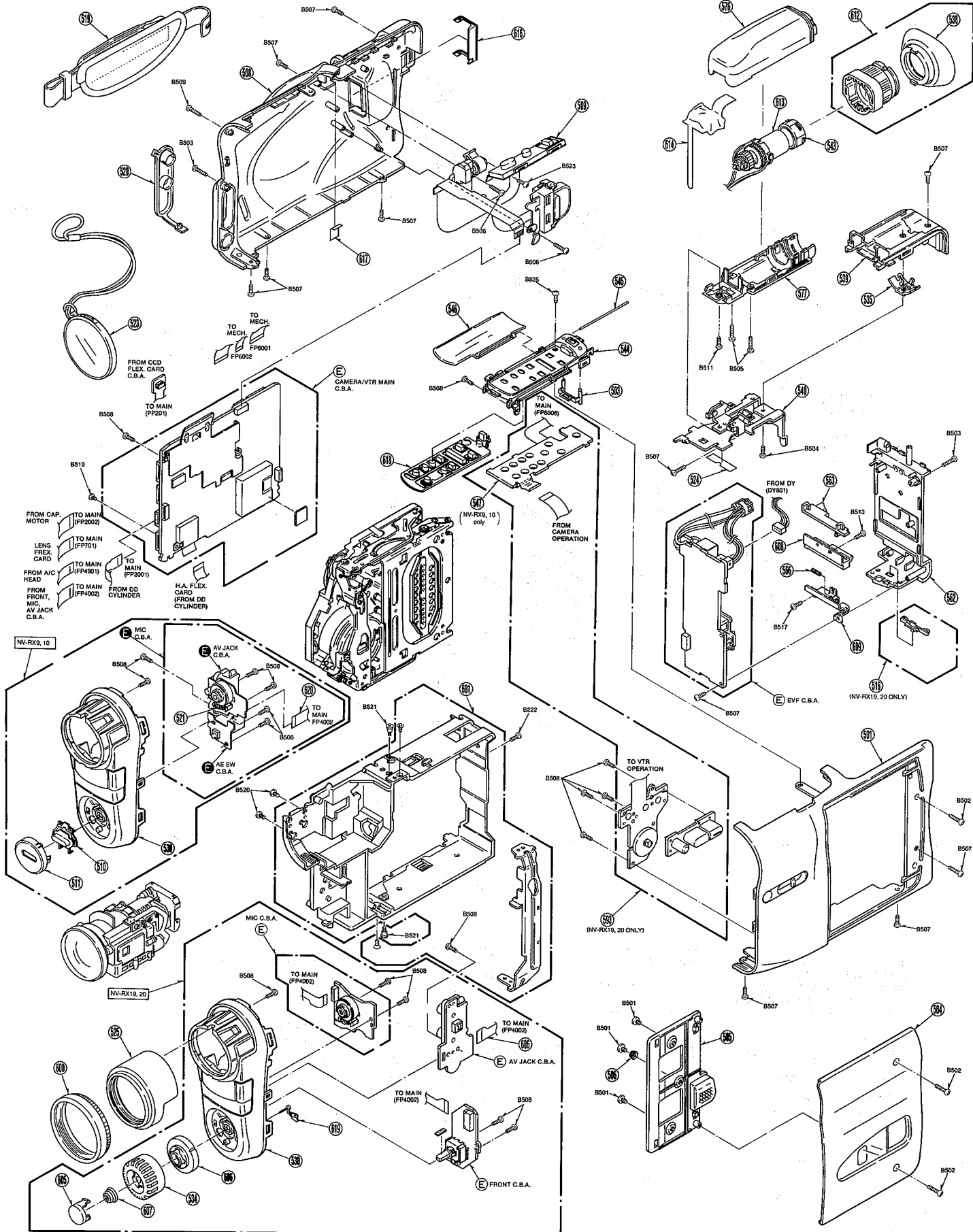
2. IMPORTANT SAFETY NOTICE

Components identified with the mark  have the special characteristics for safety. When replacing any of these components, use only the same type.

Ref.No.	Part No.	Part Name & Description	Pcs	Remarks
201 (4)	VDL0478	CRYSTAL FILTER	1	
202 (4)	VEK8062	CCD UNIT	1	
203 (4)	VMX2565	CCD CUSHION	1	
204 (4)	VXW0351	LENS U.	1	
206 (4)	VDW0319	CRYSTAL MOUNT PLATE	1	
207 (4)	VEM0601	ZOOM MOTOR U.	1	
208 (4)	VEM0600	FOCUS MOTOR U.	1	
209 (4)	VMS5735	Z GUIDE POLE	2	
210 (4)	VMS5736	F GUIDE POLE	2	

Ref.No.	Part No.	Part Name & Description	Pcs	Remarks
211 (4)	VXL2445	IRIS U.	1	
212 (4)	VXP1554	2ND. MOVING FRAME U.	1	
214 (4)	VXP1555	4TH. MOVING FRAME U.	1	
215 (4)	VXQ0440	MAIN FRAME U.	1	
216 (4)	VXQ0441	3RD. LENS FRAME U.	1	
218 (4)	VSC3671	CCD SHIELD CASE	1	
219 (4)	VMS5734	RACK G. P	1	
220 (4)	VMB2796	2ND. SPRING	1	
221 (4)	VML2911	2ND. RACK	1	
222 (4)	VMA9680	ANTI-VIBRATION SHEET	1	
B201 (4)	XQN16+CJ5	SCREW	16	
B202 (4)	XQN16+CJ6	SCREW	2	
B203 (4)	VHD0852	SCREW	1	

5 FRAME & CASING PARTS SECTION

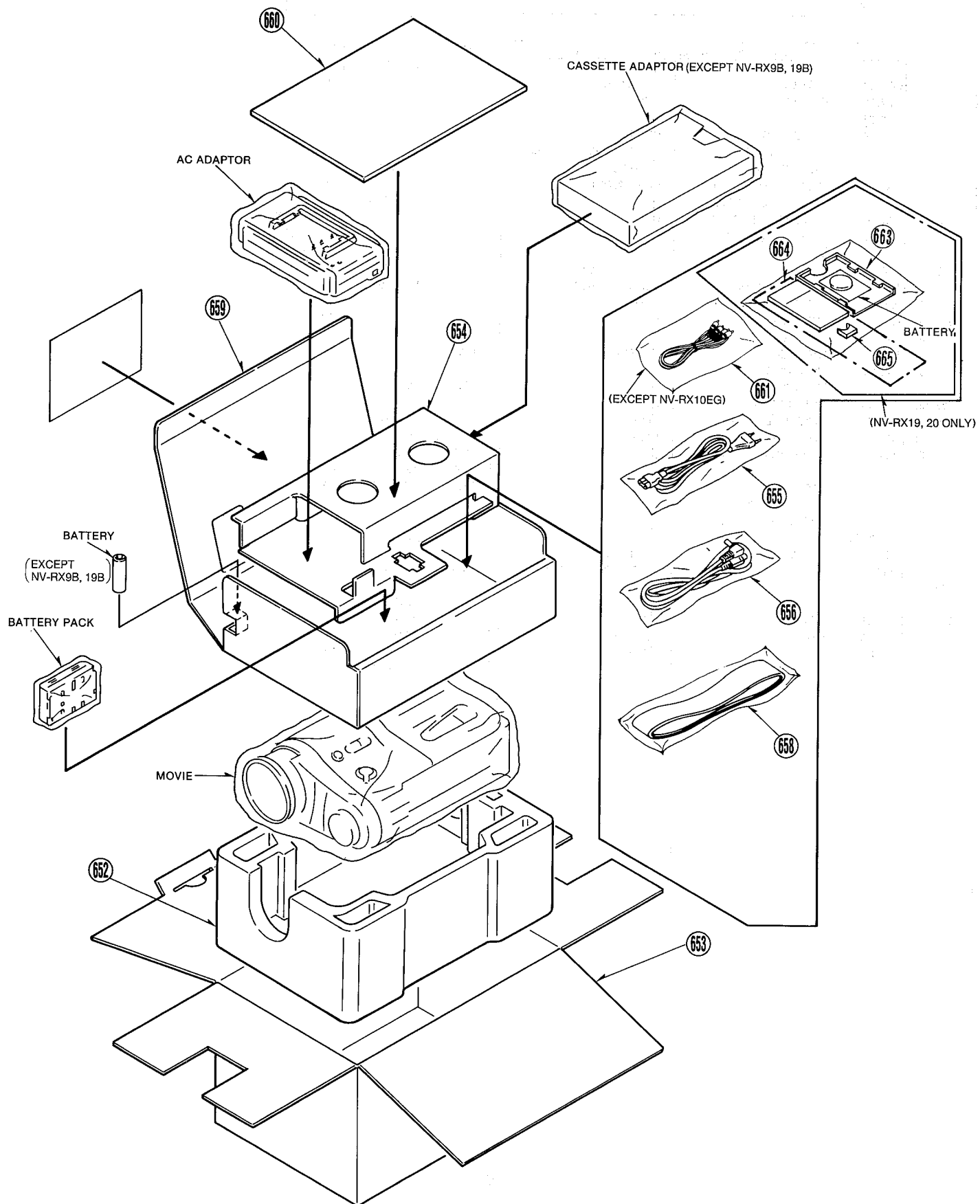


Note: 1. * Be sure to make your orders of replacement parts according to this list.
 2. IMPORTANT SAFETY NOTICE
 Components identified with the mark <1> have the special characteristics for safety. When replacing any of these components, use only the same type.

Ref.No.	Part No.	Part Name & Description	Pcs	Remarks
501 (5)	VKM4620	SIDE CASE (R)	1	NV-RX9, 10
501 (5)	VKM4622	SIDE CASE (R)	1	NV-RX19, 20
503 (5)	VGL0725	TOP PANEL LIGHT	1	
504 (5)	VYK7536	CASSETTE COVER (1) U.	1	NV-RX9B
504 (5)	VYK7487	CASSETTE COVER (1) U.	1	NV-RX10A/EG/EN/ENH/EU
504 (5)	VYK7537	CASSETTE COVER (1) U.	1	NV-RX19B
504 (5)	VYK7492	CASSETTE COVER (1) U.	1	NV-RX20EG/EN/ENH/EU
505 (5)	VGU7177	CASSETTE LOCK BUTTON	1	
506 (5)	VMB2604	CASSETTE COIL SPRING	1	
508 (5)	VYK7489	SIDE CASE (L) (1) U.	1	
509 (5)	VXU1461	S/S, ZOOM, EJECT U.	1	
510 (5)	VGU7462	AE BUTTON	1	NV-RX9, 10 ONLY
511 (5)	VKF2689	AE BUTTON COVER	1	NV-RX9, 10 ONLY
516 (5)	VGU7207	AGS KNOB	1	NV-RX19, 20 ONLY
519 (5)	VYG0618	GRIP BELT U.	1	
520 (5)	VKF2543	AV JACK COVER	1	
521 (5)	PH310	DIODE (D6802)	1	NV-RX9, 10 ONLY
523 (5)	VYF2326	HOOD COVER U.	1	
524 (5)	VGQ4226	EVF WIRE BARRIER	1	
525 (5)	VYK6776	LENS COVER U.	1	
530 (5)	VYK6958	FRONT CASE (2) U.	1	NV-RX9, 10
530 (5)	VYK6964	FRONT CASE (2) U.	1	NV-RX19, 20
534 (5)	VGU7460	FOCUS KNOB	1	
535 (5)	VGQ4136	EVF LOCK PIECE	1	
538 (5)	VMG0631	EYE CAP	1	
539 (5)	VKM4315	EVF MOUNT PANEL	1	
540 (5)	VYK6784	EVF ROTARY ANGLE U.	1	
543 (5)	M01LGM07WB02	GRT	1	
544 (5)	VYK7484	TOP PANEL, (1) U.	1	NV-RX10EG, 20EG
544 (5)	VYK7485	TOP PANEL (1) U.	1	EXCEPT NV-RX10EG, 20EG
545 (5)	VMS6103	DOOR SHAFT	1	
546 (5)	VKF2525	VTR DOOR	1	
547 (5)	VEK8069	VTR OPERATION U.	1	NV-RX9, 10 ONLY
562 (5)	VKM4313	REAR CASE	1	NV-RX9, 10
562 (5)	VKM4350	REAR CASE	1	NV-RX19, 20
563 (5)	VGQ4118	BATTERY LOCK	1	

Ref.No.	Part No.	Part Name & Description	Pcs	Remarks
566 (5)	VMB2386	BATTERY LOCK SPRING	1	
576 (5)	VKM4308	EVF CASE (UPPER)	1	
577 (5)	VKM4309	EVF CASE (LOWER)	1	
593 (5)	VEK8068	CAM/VTR OPERATION UNIT	1	NV-RX19, 20 ONLY
600 (5)	VYQ1299	LENS HOOD U.	1	
601 (5)	VYQ1275	MAIN FRAME	1	
604 (5)	VJB00X58	FRONT FPC	1	NV-RX19, 20 ONLY
605 (5)	VGU7461	MF SELECT BUTTON	1	
606 (5)	VGQ4079	MF SELECT PIECE	1	
607 (5)	VMB3123	MF SELECT BUTTON SPRING	1	
608 (5)	VGQ2607	BATTERY LOCK HOLDER	1	
609 (5)	VMP4948	BATTERY LOCK HOLD ANGLE	1	
612 (5)	VYK6780	FINDER CASE U.	1	
613 (5)	ELY05V584A1	DY	1	
614 (5)	VGQ4194	BLINDER BARRIER	1	
616 (5)	VKF2704	S/S HOLDER COVER	1	
617 (5)	VGQ4225	ZOOM BARRIER	1	
618 (5)	VGU7471	VTR OPERATION BUTTON	1	EXCEPT NV-RX10EG, 20EG
618 (5)	VGU7470	VTR OPERATION BUTTON	1	NV-RX10EG, 20EG
619 (5)	VGQ4077	MF SELECT HINGE	1	NV-RX19, 20 ONLY
620 (5)	VJB00Y26	FRONT FPC	1	NV-RX9, 10 ONLY
B501 (5)	VHD0794	SCREW	3	
B502 (5)	XQN2+CF7FZ	SCREW	2	
B503 (5)	XQN2+GJ12FZ	SCREW	2	
B504 (5)	XQN16+CQ35	SCREW	1	
B505 (5)	XQN16+C88FZ	SCREW	2	
B506 (5)	XQN2+GJ8	SCREW	2	
B507 (5)	XQN2+GJ6FZ	SCREW	14	
B508 (5)	XQN2+GJ6	SCREW	9	NV-RX9, 10
B508 (5)	XQN2+GJ6	SCREW	13	NV-RX19, 20
B509 (5)	XQN2+GJ8FZ	SCREW	1	
B511 (5)	XQN2+CF4FZ	SCREW	1	
B513 (5)	XQN2+BF4	SCREW	1	
B517 (5)	XQN2+GJ4	SCREW	1	
B519 (5)	XTB2+4F	SCREW	1	
B520 (5)	VHD1054	SCREW	2	
B521 (5)	VHD0713	SCREW	2	
B522 (5)	XQN2+C3	SCREW	1	
B523 (5)	XQN2+GJ5	SCREW	1	
B524 (5)	XQN2+CF4FZ	SCREW	1	
B525 (5)	XQN2+G66FZ	SCREW	1	

6 PACKING PARTS & ACCESSORIES SECTION



Note: 1. * Be sure to make your orders of replacement parts according to this list.
 2. IMPORTANT SAFETY NOTICE
 Components identified with the mark <!> have the special characteristics for safety. When replacing any of these components, use only the same type.

Ref.No.	Part No.	Part Name & Description	Pcs	Remarks
652 (6)	VPN4367	CUSHION (LOWER)	1	
653 (6)	VP68836	PACKING	1	NV-RX9B
653 (6)	VP68839	PACKING	1	NV-RX10A
653 (6)	VP68834	PACKING	1	NV-RX10EG
653 (6)	VP68837	PACKING	1	NV-RX10EN
653 (6)	VP68838	PACKING	1	NV-RX10ENH
653 (6)	VP68840	PACKING	1	NV-RX10EU
653 (6)	VP68843	PACKING	1	NV-RX19B
653 (6)	VP68841	PACKING	1	NV-RX20EG
653 (6)	VP68844	PACKING	1	NV-RX20EN
653 (6)	VP68845	PACKING	1	NV-RX20ENH
653 (6)	VP68846	PACKING	1	NV-RX20EU
654 (6)	VPN4453	ACCESSORIES PAD	1	
△ 655 (6)	VJA0664	AC CORD	1	NV-RX10EG/EN/EU NV-RX20EG/EN/EU
△ 655 (6)	VJA0754	AC CORD	1	NV-RX10A
△ 655 (6)	VJA0940	AC CORD	1	NV-RX9B, 10ENH NV-RX19B, 20ENH
656 (6)	VJA0769	DC OUTPUT CABLE	1	
658 (6)	VFC2522	SHOULDER STRAP	1	
659 (6)	VPN4452	ACCESSORIES BOX	1	
△ 660 (6)	VQT6830	OPERATING INSTRUCTIONS (ENGLISH)	1	NV-RX9B
△ 660 (6)	VQT6832	OPERATING INSTRUCTIONS (ENGLISH)	1	NV-RX10A
△ 660 (6)	VQT6829	OPERATING INSTRUCTIONS (GERMAN/ENGLISH /FRENCH/SPANISH)	1	NV-RX10EG
△ 660 (6)	VQT6836	OPERATING INSTRUCTIONS (ITALIAN/DUTCH /SWEDISH/DANISH)	1	NV-RX10EG
△ 660 (6)	VQT6831	OPERATING INSTRUCTIONS (ENGLISH/CHINESE /ARABIC/RUSSIAN)	1	NV-RX10EN/ENH/EU
△ 660 (6)	VQT6847	OPERATING INSTRUCTIONS (ENGLISH)	1	NV-RX19B
△ 660 (6)	VQT6846	OPERATING INSTRUCTIONS (GERMAN/ENGLISH /FRENCH/SPANISH)	1	NV-RX20EG
△ 660 (6)	VQT6851	OPERATING INSTRUCTIONS (ITALIAN/DUTCH /SWEDISH/DANISH)	1	NV-RX20EG
△ 660 (6)	VQT6848	OPERATING INSTRUCTIONS (ENGLISH/CHINESE /ARABIC/RUSSIAN)	1	NV-RX20EN/ENH/EU
661 (6)	VFA0039	AV CORD	1	EXCEPT NV-RX10EG
663 (6)	VG68893	REMOTE CONTROLLER HOLDER	1	NV-RX19, 20
664 (6)	VE01887	REMOTE CONTROLLER	1	NV-RX19, 20
665 (6)	VJF1262	BATTERY COVER	1	NV-RX19, 20

Ref.No.	Part No.	Part Name & Description	Pcs	Remarks
		***** JIG & TOOLS *****		
		----- ELECTRICAL -----		
		TATSUJIN KIT		
		(For individual part numbers of Tatsujin kit, please refer to Technical Information order No. VRD9609T08)		
	VFKWOF0033	ATTACHMENT CABLE	2	OR VFK0670
	VFKWOF0055	ATTACHMENT CABLE	2	
	VFKWOF0001	COMMON CABLE	2	
	VFKWOF0128	ATTACHMENT CABLE	1	OR VFK0978
	VFKWOF0127	ATTACHMENT CABLE	1	
	VFKWOF0001	COMMON CABLE	1	
	VFKWOF0118	ATTACHMENT CABLE	1	OR VFK0929
	VFKWOF0117	ATTACHMENT CABLE	1	
	VFKWOF0001	COMMON CABLE	1	
	VFKWOF0132	ATTACHMENT CABLE	1	OR VFK0980
	VFKWOF0131	ATTACHMENT CABLE	1	
	VFKWOF0001	COMMON CABLE	1	
	VFKWOF0111	ATTACHMENT CABLE	1	OR VFK013
	VFKWOF0112	ATTACHMENT CABLE	1	
	VFKWOF0001	COMMON CABLE	1	
	VFKWOF0140	ATTACHMENT CABLE	1	
	VFKWOF0139	ATTACHMENT CABLE	1	
	VFKWOF0001	COMMON CABLE	1	
	VFK0668	EXTENSION CABLE	1	
		----- MECHANICAL -----		
	VFK0743	H-POSITION ADJUSTMENT	1	
	VFK0824	ASTERISK TYPE WRENCH	1	
	VFM8180HUPF	VHS-C ALIGNMENT TAPE	1	
	VFK0329	POST ADJ. SCREW DRIVER	1	
	VFK0326	HEX WRENCH SET	1	
	VFK27	HEAD CLEANING STICK	1	
	VFK1024	MORLYTONE GREASE	1	