

19283_001_121009.eps
121009

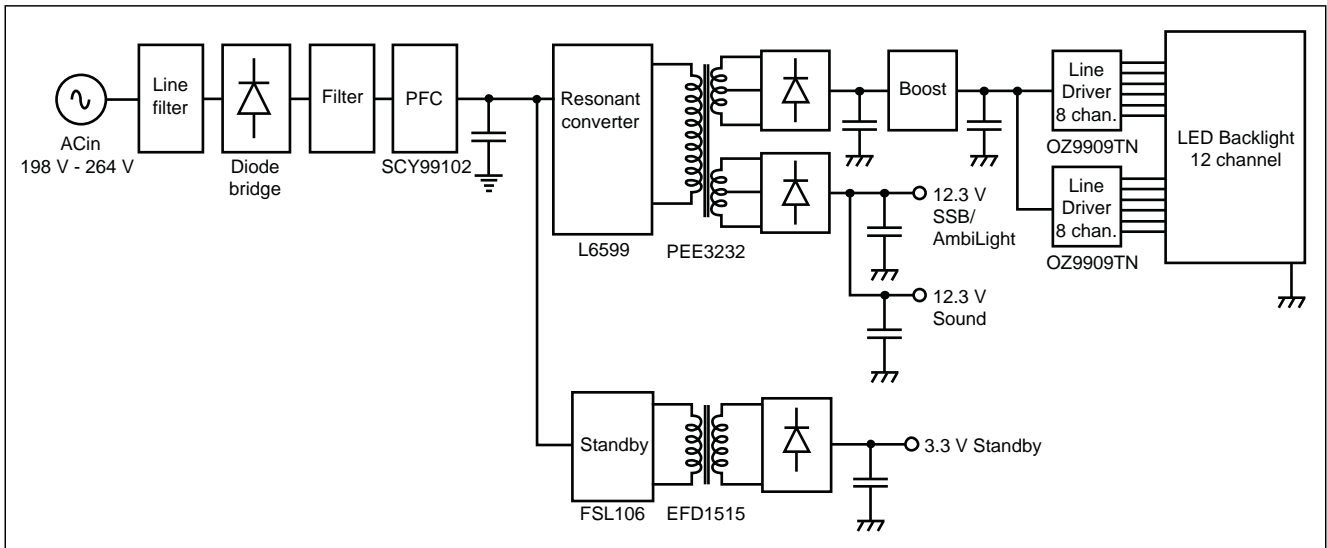
Figure 7-6 Test instructions 42" 43x7 series

Following checks have to be performed:

- check fuse (F101)
- standby check V_{STB} (C301), measure 3.3 V
- PFC voltage check (C646), measure 380 - 400 V; if no PFC applied, measure 311 @ 220 V
- multi-level check V_{SSB} (C203), measure 12.3 V
- multi-level check V_{SND} (C202), measure 12.3V

- reference voltage check (U401), measure 5.96 V (appr.).

Block Diagram & Test Instructions 47" sets (43x7 series)
Info in this section applies to the PLDH-P106B power supply unit.



19224_005_121010.eps
121010

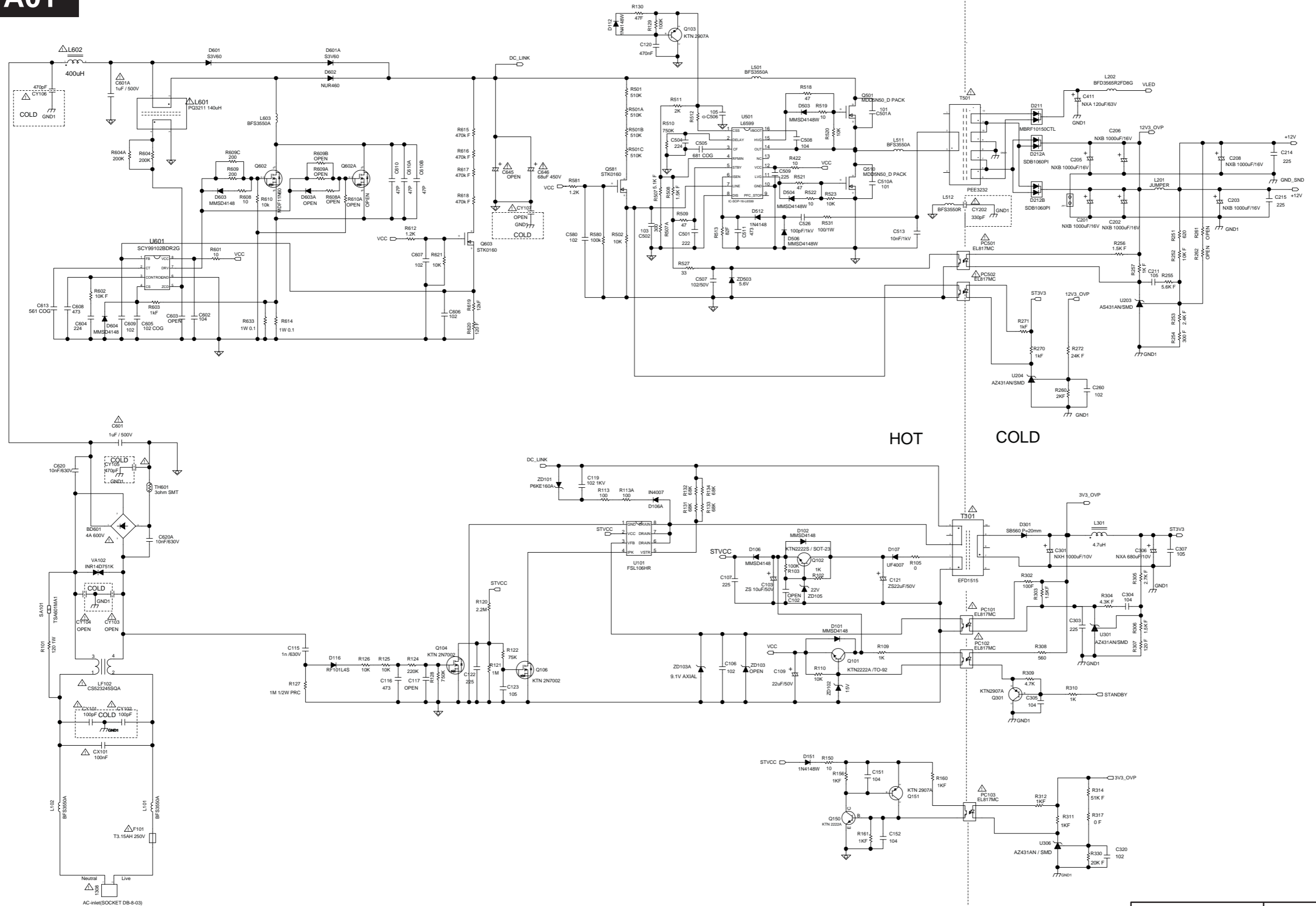
Figure 7-7 Block diagram 47" 43x7 series

10.4 A 272217190639
10-4-1 A01, PSL

A01

Power Supply Unit with Integrated Led Driver

A01



Power Supply Unit with Integrated Led Driver	2722 171 90639 PLDF-P104B	1	2011-08-18