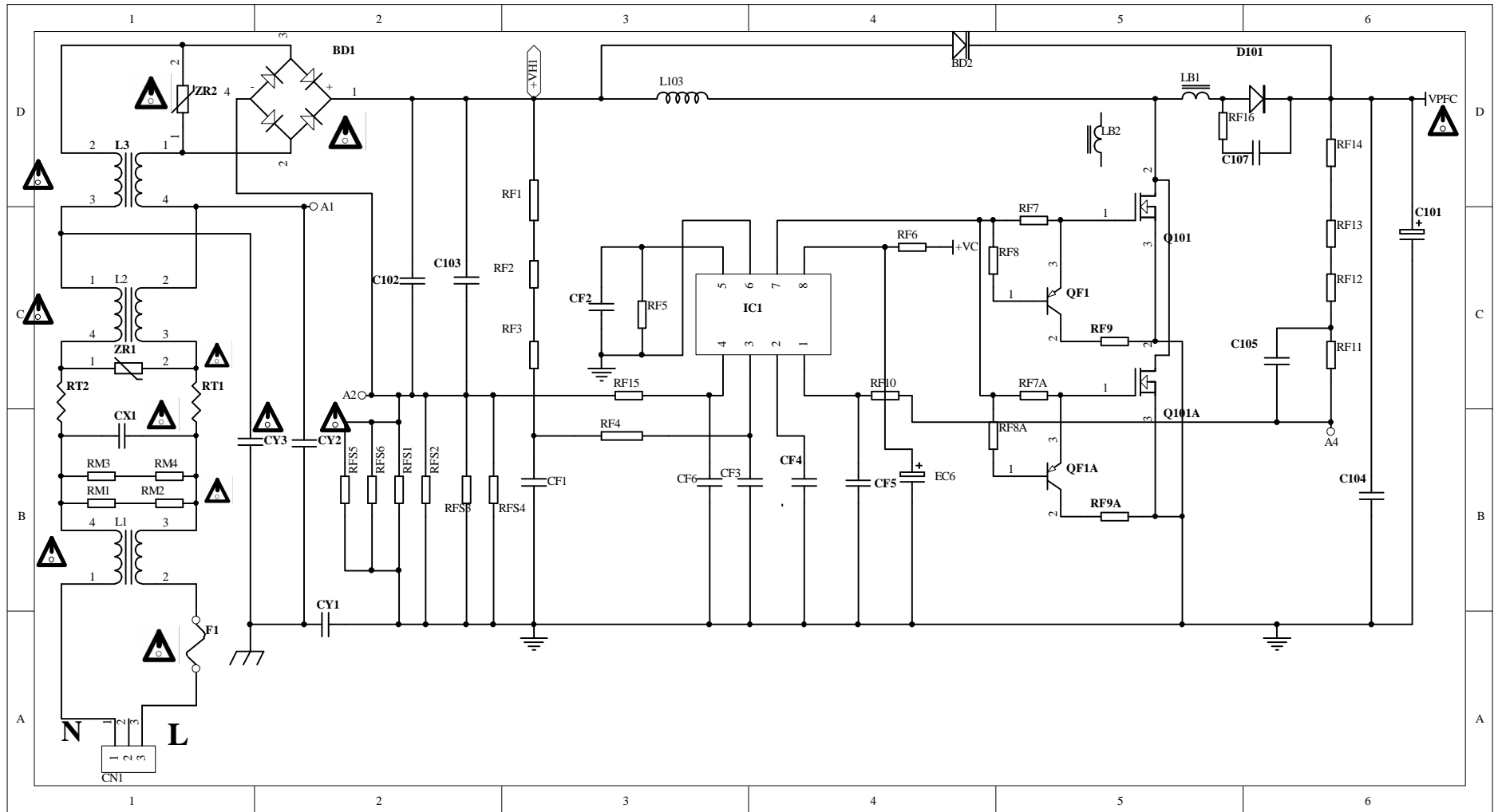
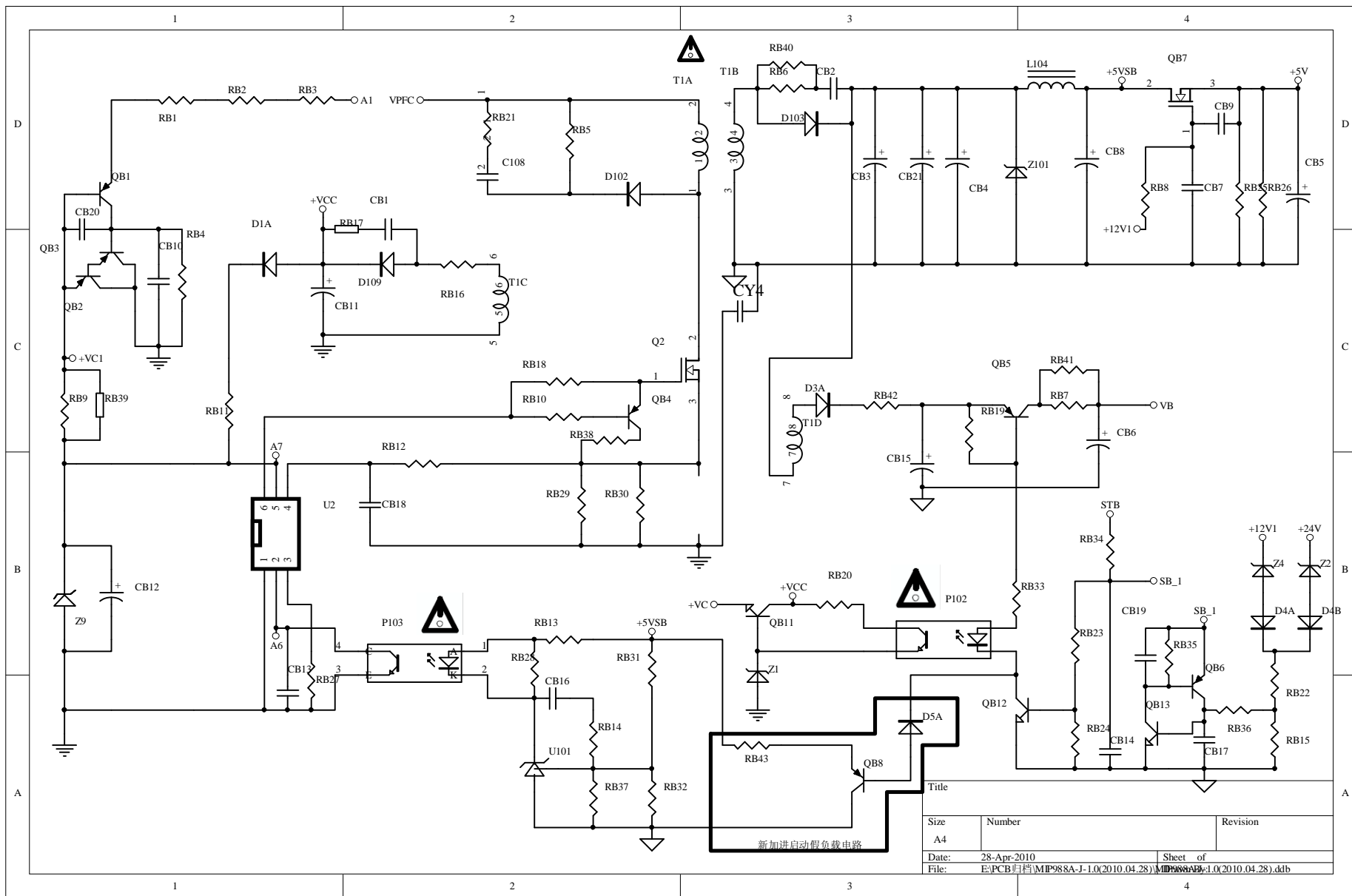


4. MIP988-J (LCD42P08A)

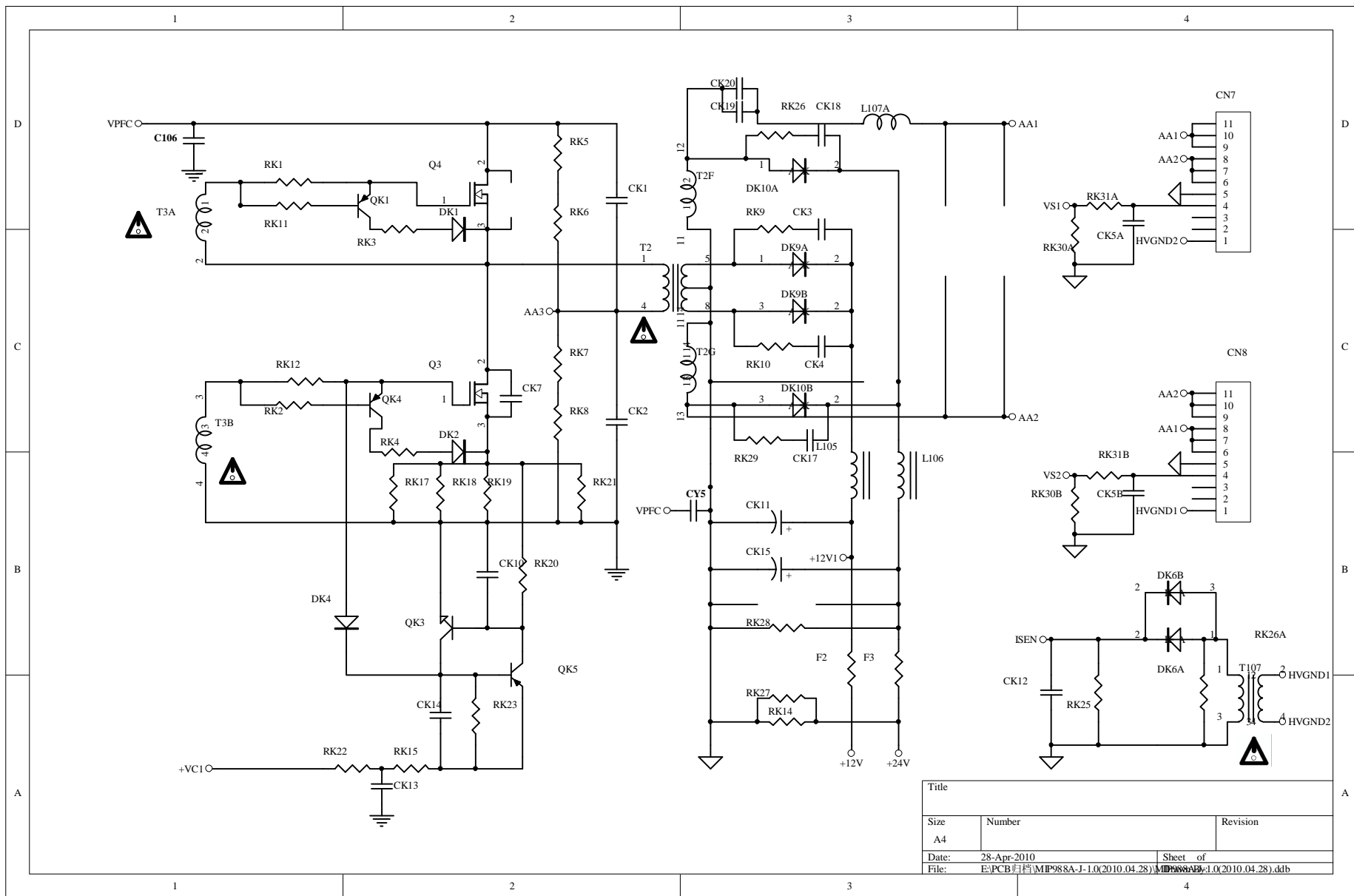
1) PFC



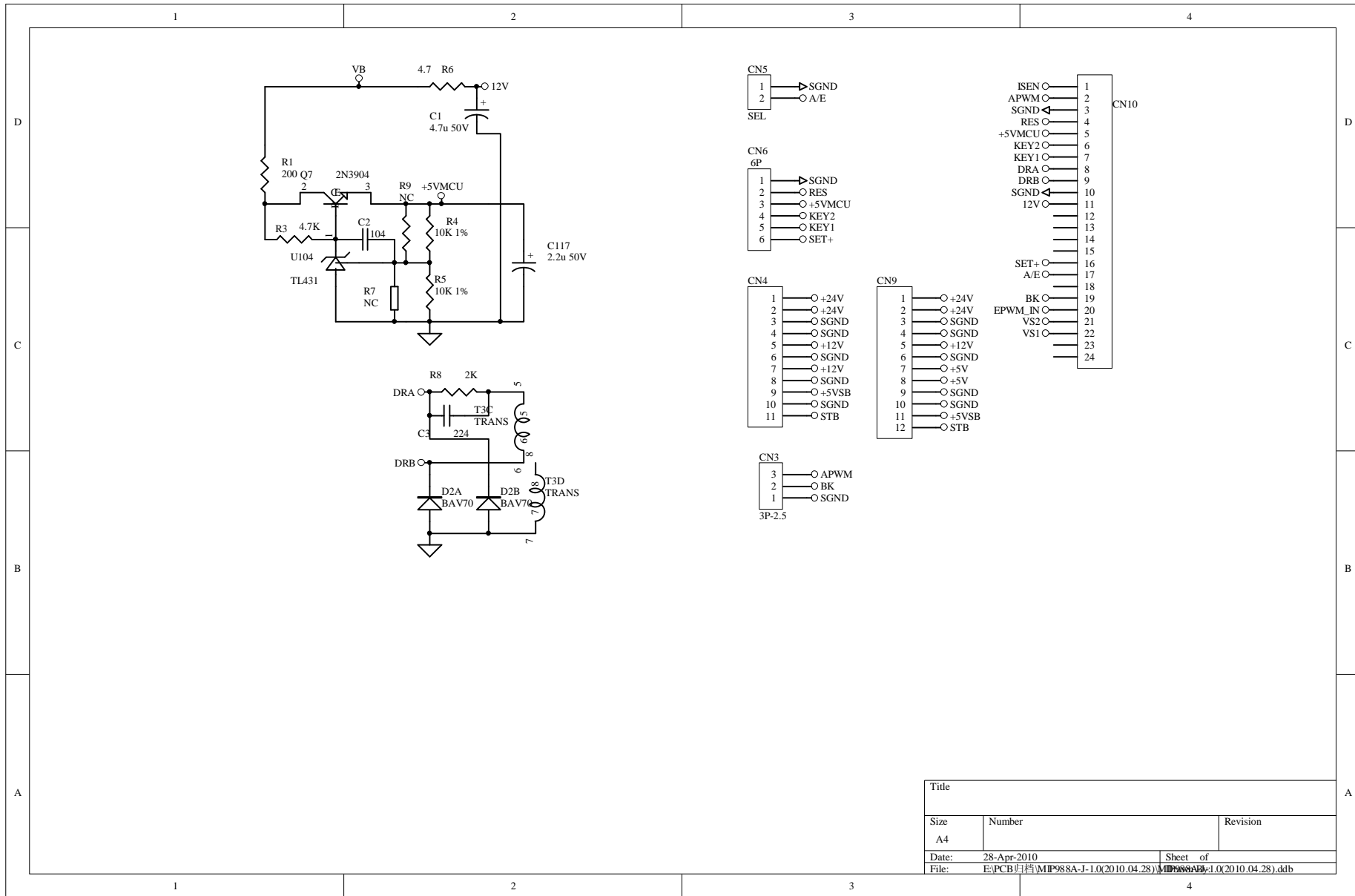
2) 5VSTB



3) INVERTER



4) OUTPUT



Title		
Size	Number	Revision
A4		
Date:	28-Apr-2010	Sheet of
File:	E:\PCB\日\MP988A-J-1.0(2010.04.28)\MP988A-J-1.0(2010.04.28).dtd	

4. MIP988-I

Table 16 Pin-CN4 Connection And Function

NO.	Pin Connection	Function
1	STB	SMPS ON/OFF CONTROL (ON = HIGH)
2. 4. 6. 8. 9	GND	GND RETURN
3	+5VSB	STANDBY OUTPUT
5. 7	+12V	+12V OUTPUT
10. 11	+24V	+24V OUTPUT

Note: CN4 -- JST VA CONNEETION, TYPE : pitch2.5mm

Table 17 Pin-CN9 Connection And Function

NO.	Pin Connection	Function
1	STB	SMPS ON/OFF CONTROL (ON = HIGH)
2	+5VSB	STANDBY OUTPUT
3, 4 , 7, 9, 10	GND	GND RETURN
5, 6	+5V	+5V OUTPUT
8	+12V	+12V OUTPUT
11, 12	+24V	+24V OUTPUT

Note: CN5 -- JST VA CONNEETION, TYPE : pitch2.5mm

Table 18 Pin-CN1 Connection And Function

NO.	Pin Connection	Function
1	AC-N	AC INPUT NUTURE
2, 3, 4	NC	NC
5	AC-L	AC INPUT LINE

Note: CN1 -- JST VA CONNEETION, TYPE : pitch3.96mm,

MEGMEET 麦格米特电气技术有限公司
MEGMEET ELECTRICAL TECHNOLOGY CO., LTD.

DESCRIPTION:
 (规格书)
SPECIFICATION

THESE SPECIFICATION ARE THE PROPERTY OF MEGMEET ELECTRICAL TECHNOLOGY CO., LTD AND SHALL NOT BE REPRODUCED OR USED AS THE BASIS FOR THE MANUFACTURE OR SELL OF APPARATUSES OR DEVICES WITHOUT PERMISSION.

Model No. :
MIP988A-J

DATE	PREPARED	CHECKED	APPROVED	Document No. :	REV:
2010/04/22	JiangXiaofeng				1.0