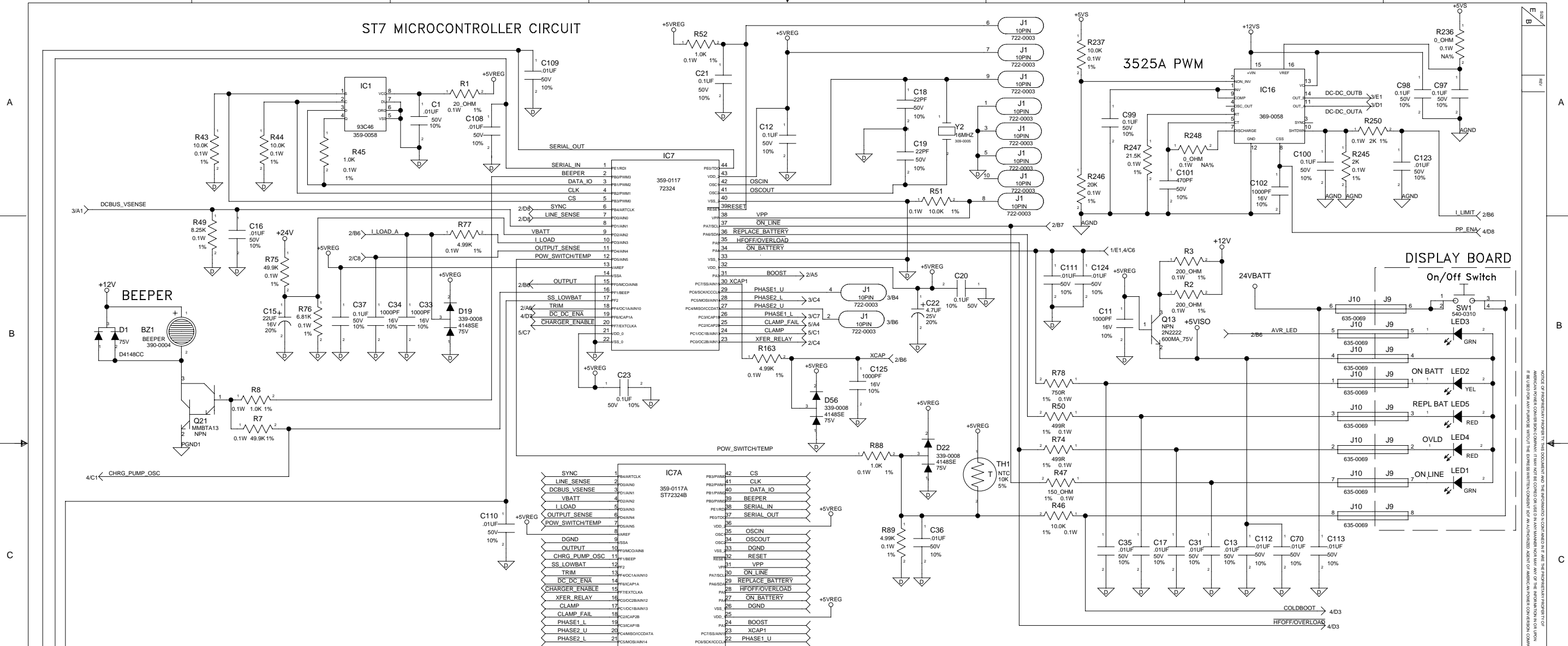
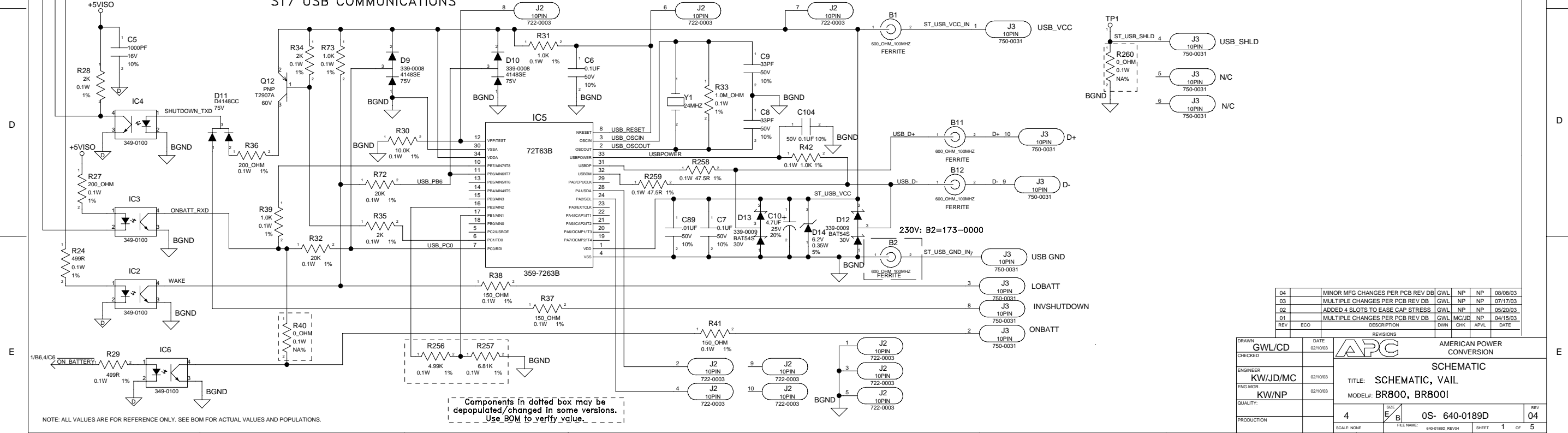


ST7 MICROCONTROLLER CIRCUIT



ST7 USB COMMUNICATIONS



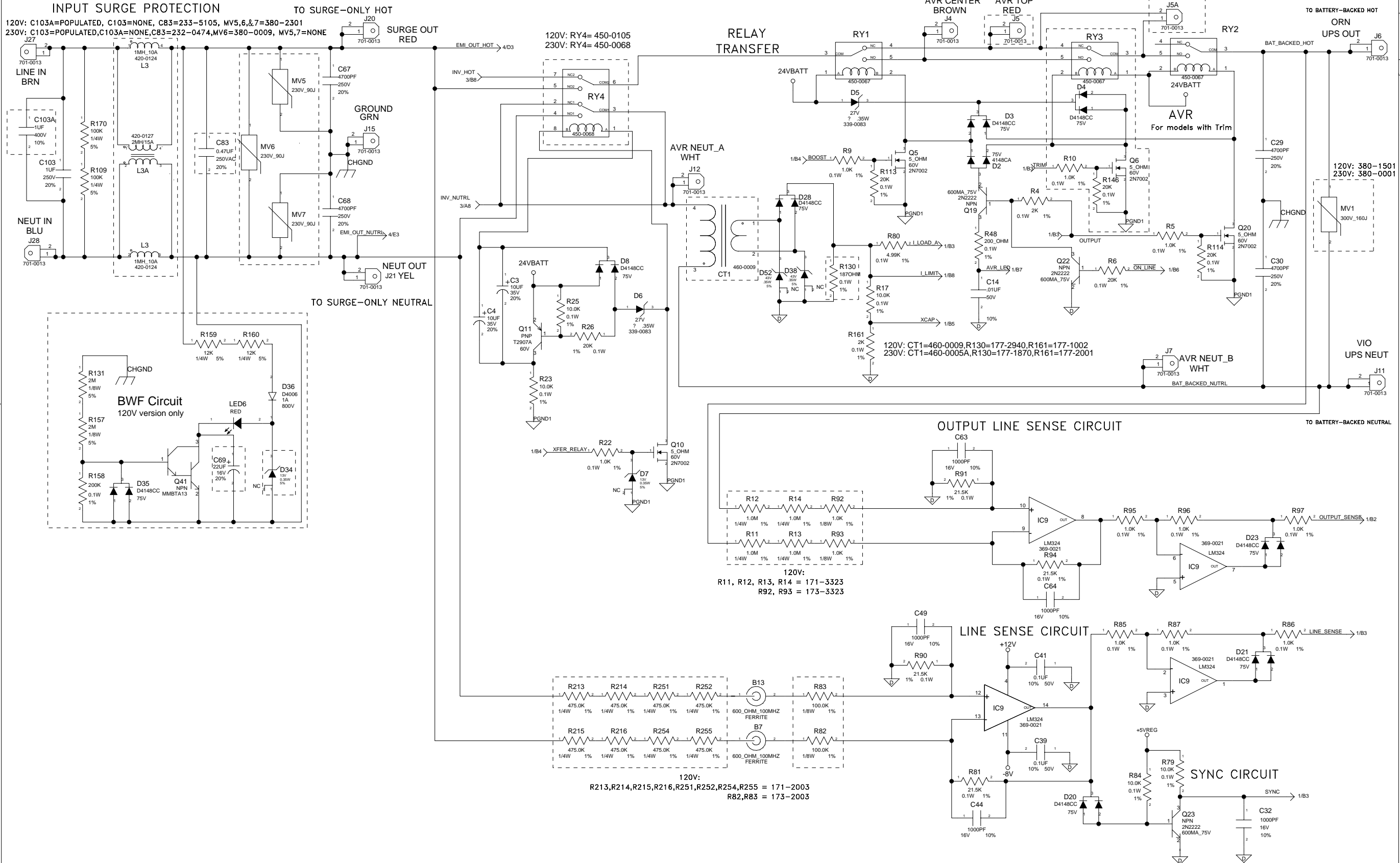
NOTE: ALL VALUES ARE FOR REFERENCE ONLY. SEE BOM FOR ACTUAL VALUES AND POPULATIONS.

Components in dotted box may be depopulated/changed in some versions. Use BOM to verify value.

REVISIONS		AMERICAN POWER CONVERSION	
REV	DESCRIPTION	DWN	CHK
04	MINOR MFG CHANGES PER PCB REV DB	GWL	NP
03	MULTIPLE CHANGES PER PCB REV DB	GWL	NP
02	ADDED 4 SLOTS TO EASE CAP STRESS	GWL	NP
01	MULTIPLE CHANGES PER PCB REV DB	GWL	NP
REV	ECO	DATE	DATE

DRAWN	GWL/CD	DATE	02/10/03
CHECKED			
ENGINEER	KW/JD/MC	DATE	02/10/03
ENG MGR	KW/NP	DATE	02/10/03
QUALITY			
PRODUCTION			

TITLE	SCHEMATIC, VAIL
MODEL#	BR800, BR800I
REV	04
SCALE	NONE
FILE NAME	640-0189D_REV04
SHEET	1 OF 5



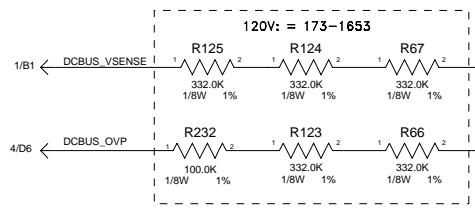
NOTE: ALL VALUES ARE FOR REFERENCE ONLY. SEE BOM FOR ACTUAL VALUES AND POPULATIONS.

Components in dotted box may be depopulated/changed in some versions. Use BOM to verify value.

REV	ECO	DESCRIPTION	DWN	CHK	APPL	DATE

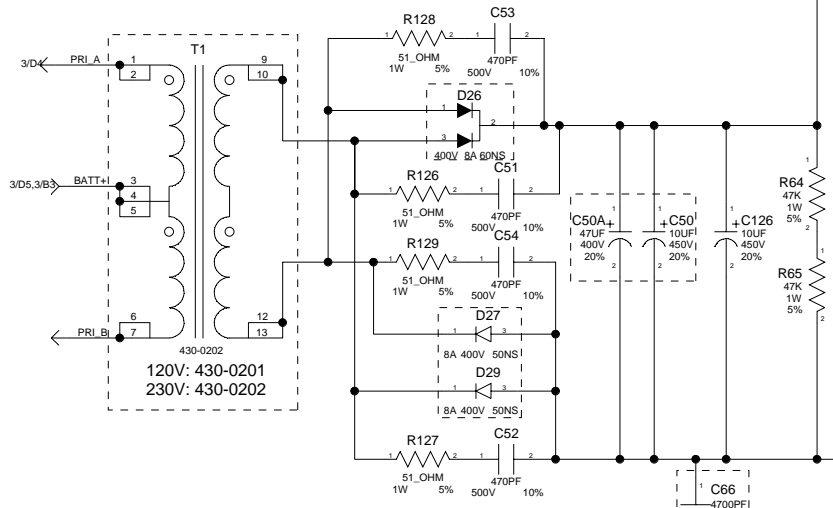
DRAWN GWL/CD	DATE 02/10/03		AMERICAN POWER CONVERSION
CHECKED			SCHEMATIC
ENGINEER KW/JD/MC	02/10/03	TITLE: SCHEMATIC, VAIL	
ENG MGR KW/NP	02/10/03	MODEL#: BR800, BR800i	
QUALITY:		REV E	0S- 640-0189D
PRODUCTION		SCALE: NONE	FILE NAME: 640-0189D_REV04 SHEET 2 OF 5

AMERICAN POWER CONVERSION IS THE REGISTERED AND TRADEMARK OF AMERICAN POWER CONVERSION, INC. IN THE UNITED STATES AND OTHER COUNTRIES. ALL RIGHTS RESERVED. THE INFORMATION CONTAINED HEREIN IS THE PROPERTY OF AMERICAN POWER CONVERSION, INC. AND IS NOT TO BE REPRODUCED OR TRANSMITTED IN ANY FORM OR BY ANY MEANS, ELECTRONIC OR MECHANICAL, INCLUDING PHOTOCOPYING, RECORDING, OR BY ANY INFORMATION STORAGE AND RETRIEVAL SYSTEM. THE INFORMATION CONTAINED HEREIN IS THE PROPERTY OF AMERICAN POWER CONVERSION, INC. AND IS NOT TO BE REPRODUCED OR TRANSMITTED IN ANY FORM OR BY ANY MEANS, ELECTRONIC OR MECHANICAL, INCLUDING PHOTOCOPYING, RECORDING, OR BY ANY INFORMATION STORAGE AND RETRIEVAL SYSTEM.



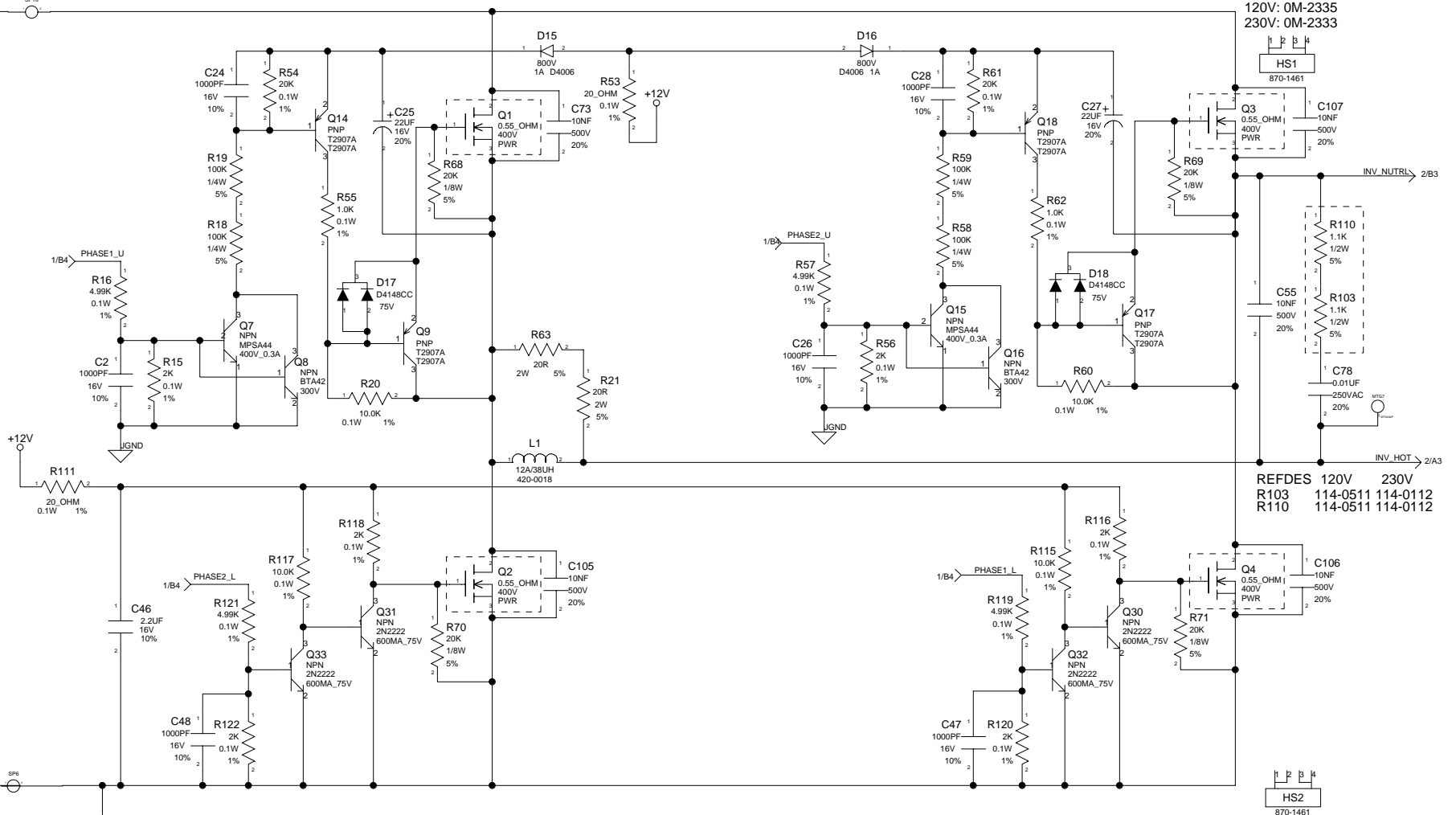
PUSH-PULL DC/DC CONVERTER

REFDES 120V 230V
 D26 341-1620 341-1640
 D27 & D29 340-0107 340-0840
 C50A 203-4047 NO POP
 C50 NO POP 203-8010

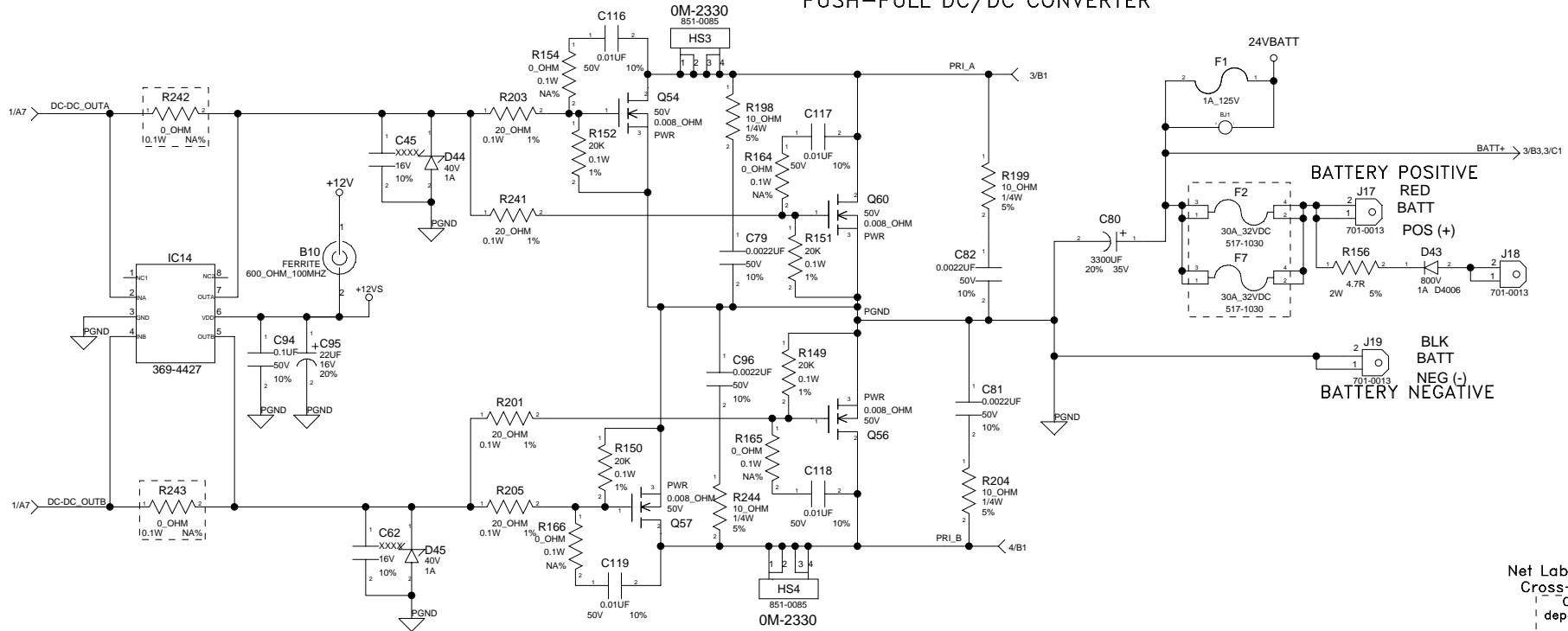


REFDES 120V 230V
 Q1,2,3,4 325-0640 325-0740

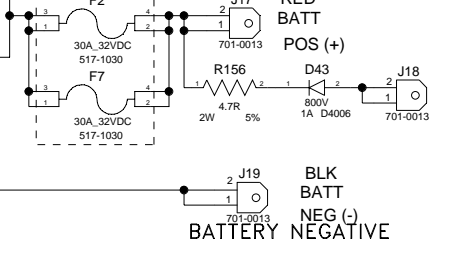
H-BRIDGE DC/AC INVERTER



PUSH-PULL DC/DC CONVERTER



BATTERY POSITIVE



BATTERY NEGATIVE

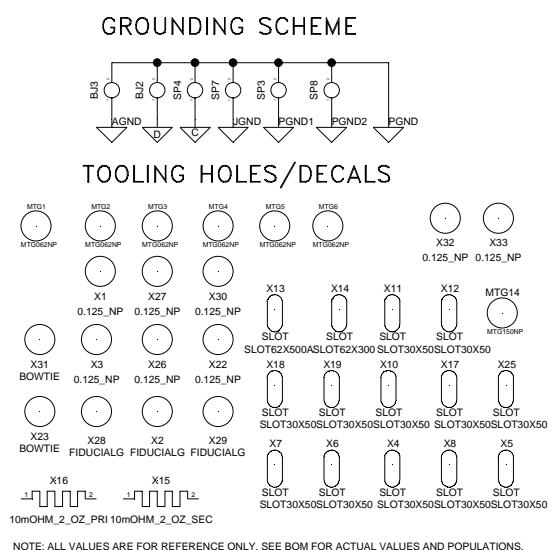
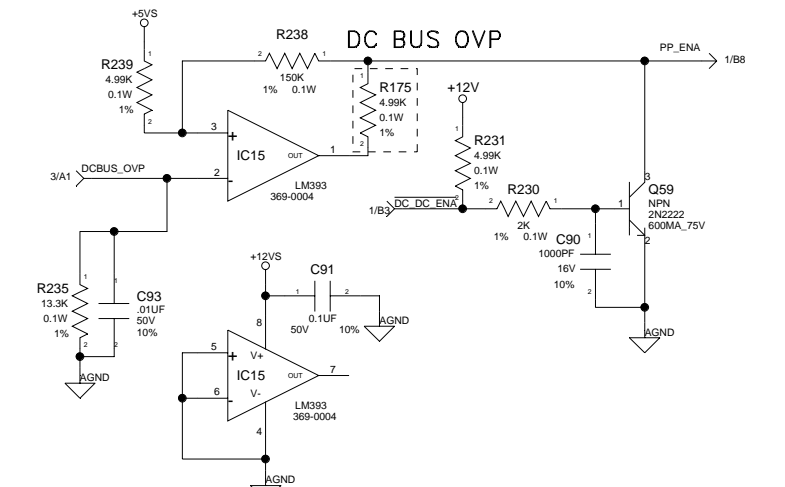
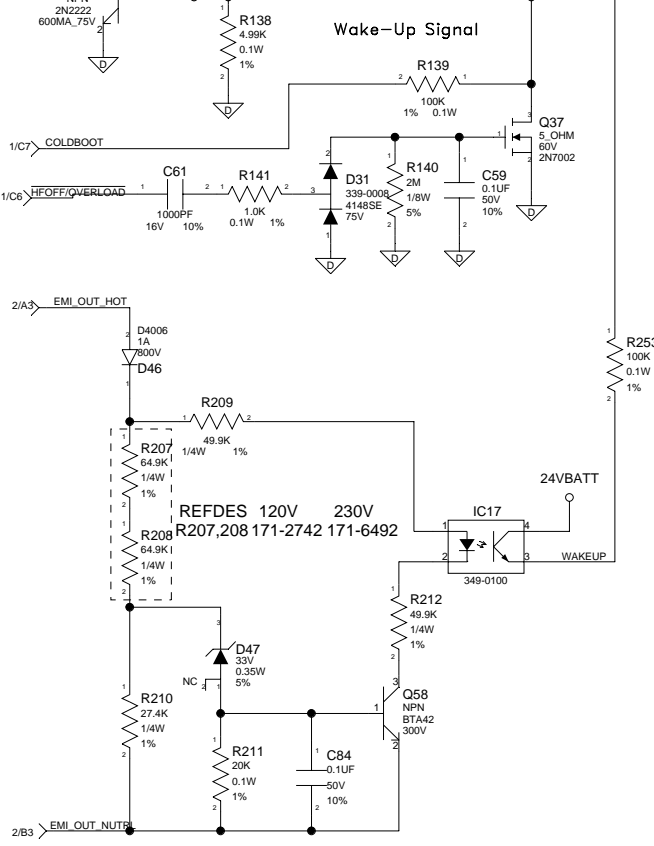
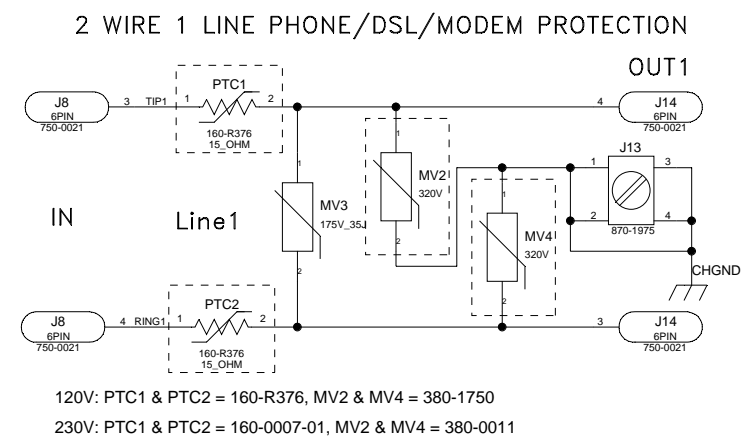
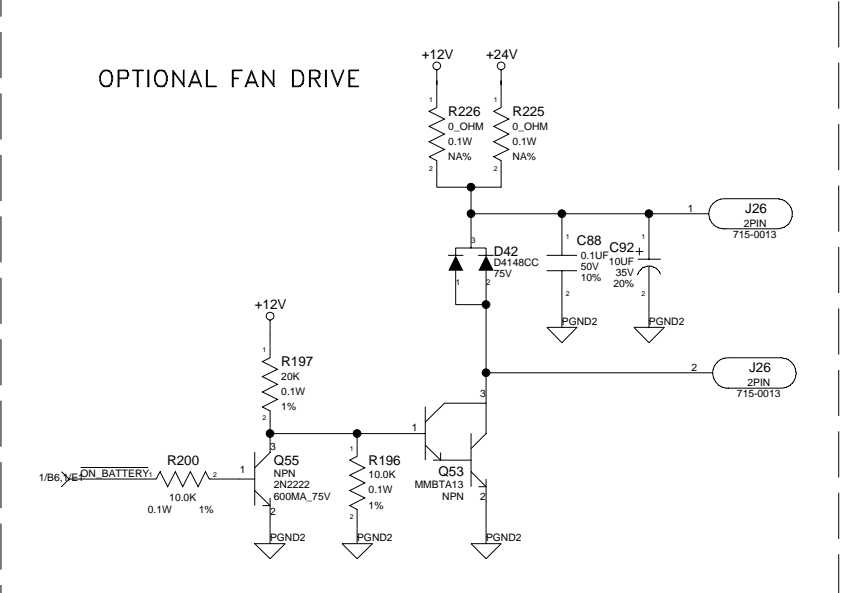
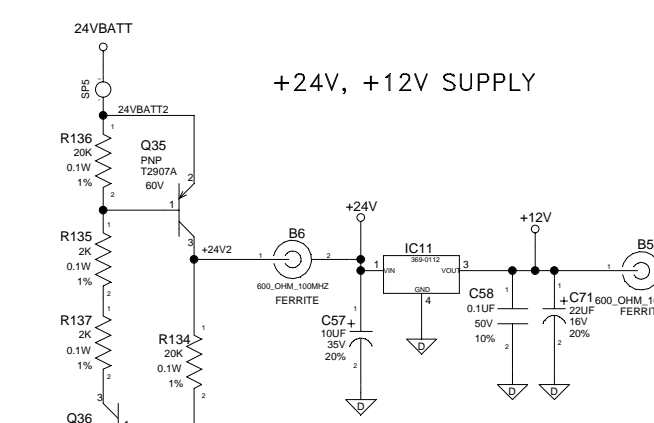
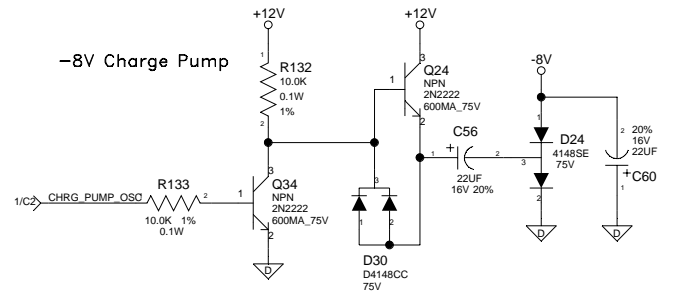
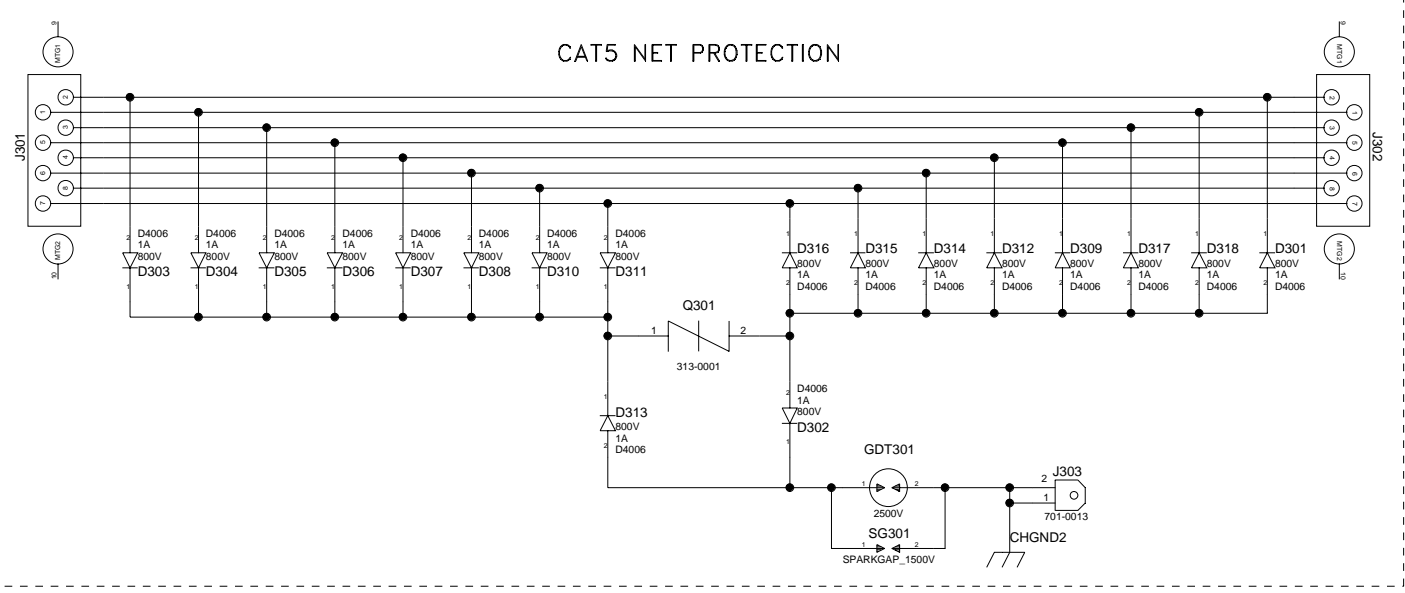


NOTE: ALL VALUES ARE FOR REFERENCE ONLY. SEE BOM FOR ACTUAL VALUES AND POPULATIONS.

Net Label with N/XN (e.g. 2/C4) indicate
 Cross-Ref Sheet Number/Coordinates
 Components in dotted box may be
 depopulated/changed in some versions.
 Use BOM to verify value.

REV	ECO	DESCRIPTION	DWN	CHK	APVL	DATE

DRAWN GWL/CD	DATE 02/10/03	<p>AMERICAN POWER CONVERSION</p>
CHECKED		
ENGINEER KW/JD/MC	02/10/03	
ENG MGR KW/NP	02/10/03	
QUALITY		TITLE: SCHEMATIC, VAIL
PRODUCTION		MODEL#: BR800, BR800I
		REV: 04
		SCALE: NONE
		FILE NAME: 640-0189D
		SHEET 3 OF 5

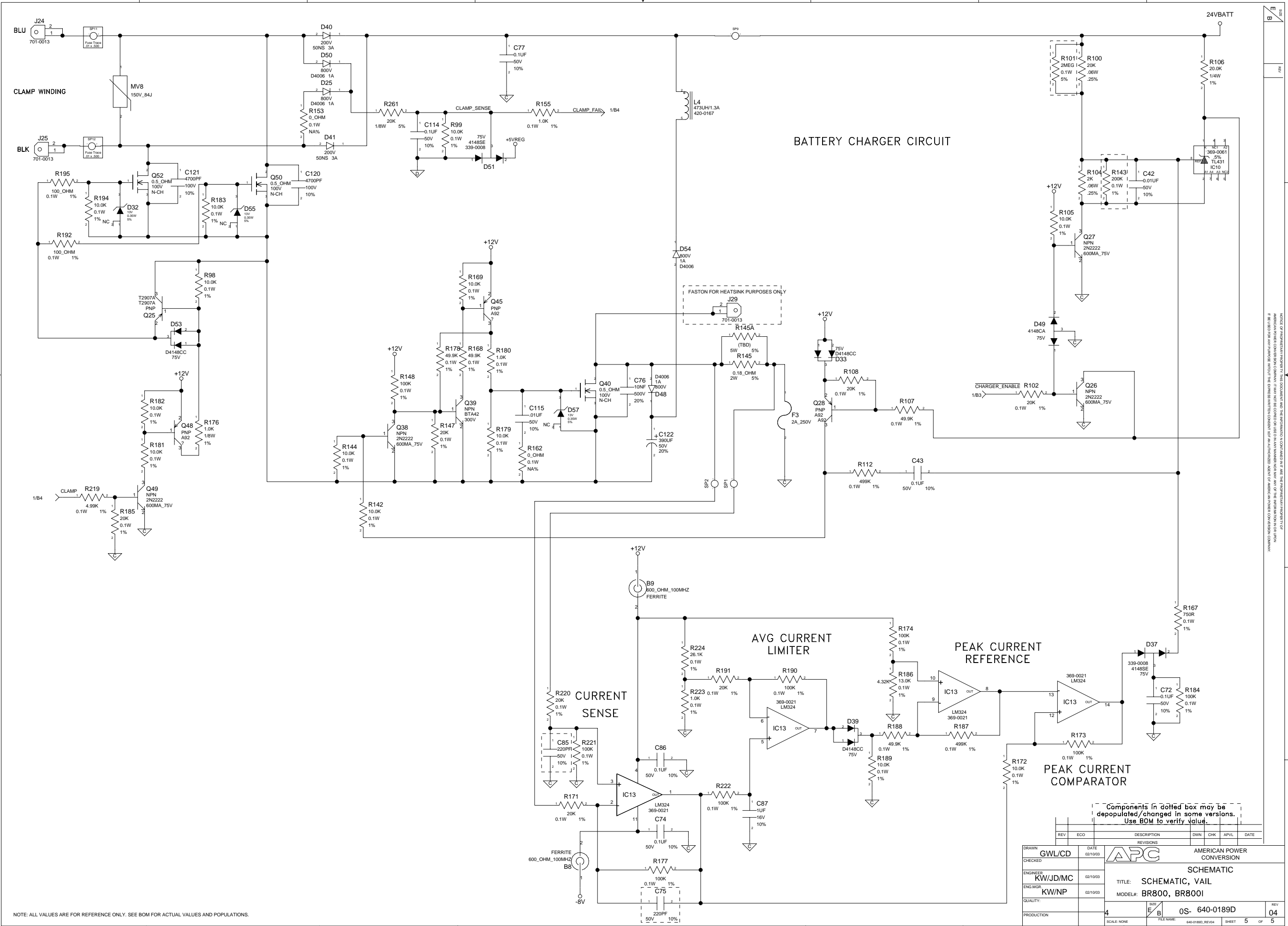


REV	ECO	DESCRIPTION	DWN	CHK	APVL	DATE

DRAWN	GWL/CD	DATE	02/10/03		AMERICAN POWER CONVERSION
CHECKED					
ENGINEER	KW/JD/MC	DATE	02/10/03	SCHEMATIC TITLE: SCHEMATIC, VAIL MODEL#: BR800, BR800I	
ENG MGR					
QUALITY:	KW/NP	DATE	02/10/03	REV	04
PRODUCTION				SCALE: NONE	FILE NAME: 640-0189D
				SHEET	4 OF 5

Components in dotted box may be depopulated/changed in some versions. Use BOM to verify value.

THIS DOCUMENT IS UNCLASSIFIED AND THE INFORMATION CONTAINED HEREIN IS UNCLASSIFIED EXCEPT WHERE SHOWN OTHERWISE. IT IS THE PROPERTY OF AMERICAN POWER CONVERSION. IT IS TO BE USED ONLY FOR THE PURPOSES AUTHORIZED BY THE INFORMATION CONTAINED HEREIN.



NOTE: ALL VALUES ARE FOR REFERENCE ONLY. SEE BOM FOR ACTUAL VALUES AND POPULATIONS.

Components in dotted box may be depopulated/changed in some versions. Use BOM to verify value.

REV	ECO	DESCRIPTION	DWN	CHK	APPL	DATE

DRAWN	GWL/CD	DATE	02/10/03	 AMERICAN POWER CONVERSION SCHEMATIC TITLE: SCHEMATIC, VAIL MODEL#: BR800, BR800I REV: 04 SCALE: NONE FILE NAME: 640-0189D_REV04 SHEET 5 OF 5
CHECKED				
ENGINEER	KW/JD/MC	DATE	02/10/03	
ENG MGR:	KW/NP	DATE	02/10/03	
QUALITY:				
PRODUCTION				