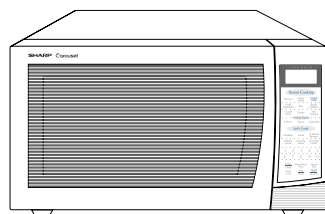


SHARP SERVICE MANUAL

SX705R530EPW/



R-530EW-T



R-530ES-T

MICROWAVE OVEN

MODELS **R-530EK-T** **R-530EW-T** **R-530ES-T**

In the interest of user-safety the oven should be restored to its original condition and only parts identical to those specified should be used.

WARNING TO SERVICE PERSONNEL: Microwave ovens contain circuitry capable of producing very high voltage and current, contact with following parts may result in a severe, possibly fatal, electrical shock. (High Voltage Capacitor, High Voltage Power Transformer, Magnetron, High Voltage Rectifier Assembly, High Voltage Harness etc..)

CONTENTS

PRECAUTIONS TO BE OBSERVED BEFORE AND DURING SERVICING TO AVOID POSSIBLE EXPOSURE TO EXCESSIVE MICROWAVE ENERGY
CHAPTER 1. WARNING TO SERVICE PERSONNEL

CHAPTER 2. MICROWAVE MEASUREMENT PROCEDURE

CHAPTER 3. FOREWORD AND WARNING

CHAPTER 4. PRODUCT DESCRIPTION

CHAPTER 5. GENERAL INFORMATION

CHAPTER 6. OPERATION

CHAPTER 7. TROUBLESHOOTING GUIDE

CHAPTER 8. TEST PROCEDURES

CHAPTER 9. TOUCH CONTROL PANEL ASSEMBLY

CHAPTER 10. PRECAUTIONS FOR USING LEAD-FREE SOLDER

CHAPTER 11. COMPONENT REPLACEMENT AND ADJUSTMENT PROCEDURE

CHAPTER 12. CIRCUIT DIAGRAMS

Parts List

CHAPTER 12. CIRCUIT DIAGRAMS

[1] Pictorial Diagram

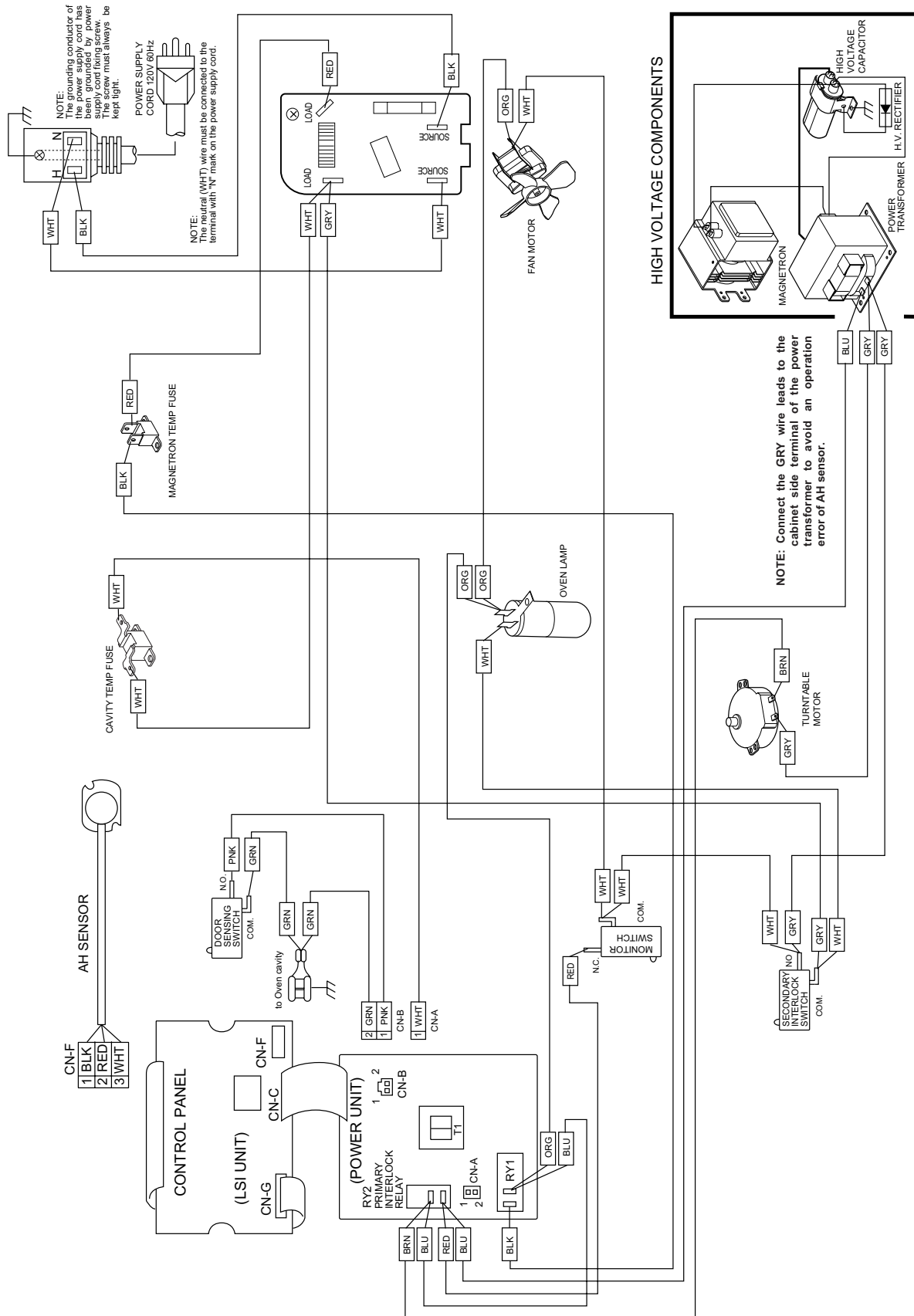


Figure S-1. Pictorial Diagram

[2] Power Unit Circuit

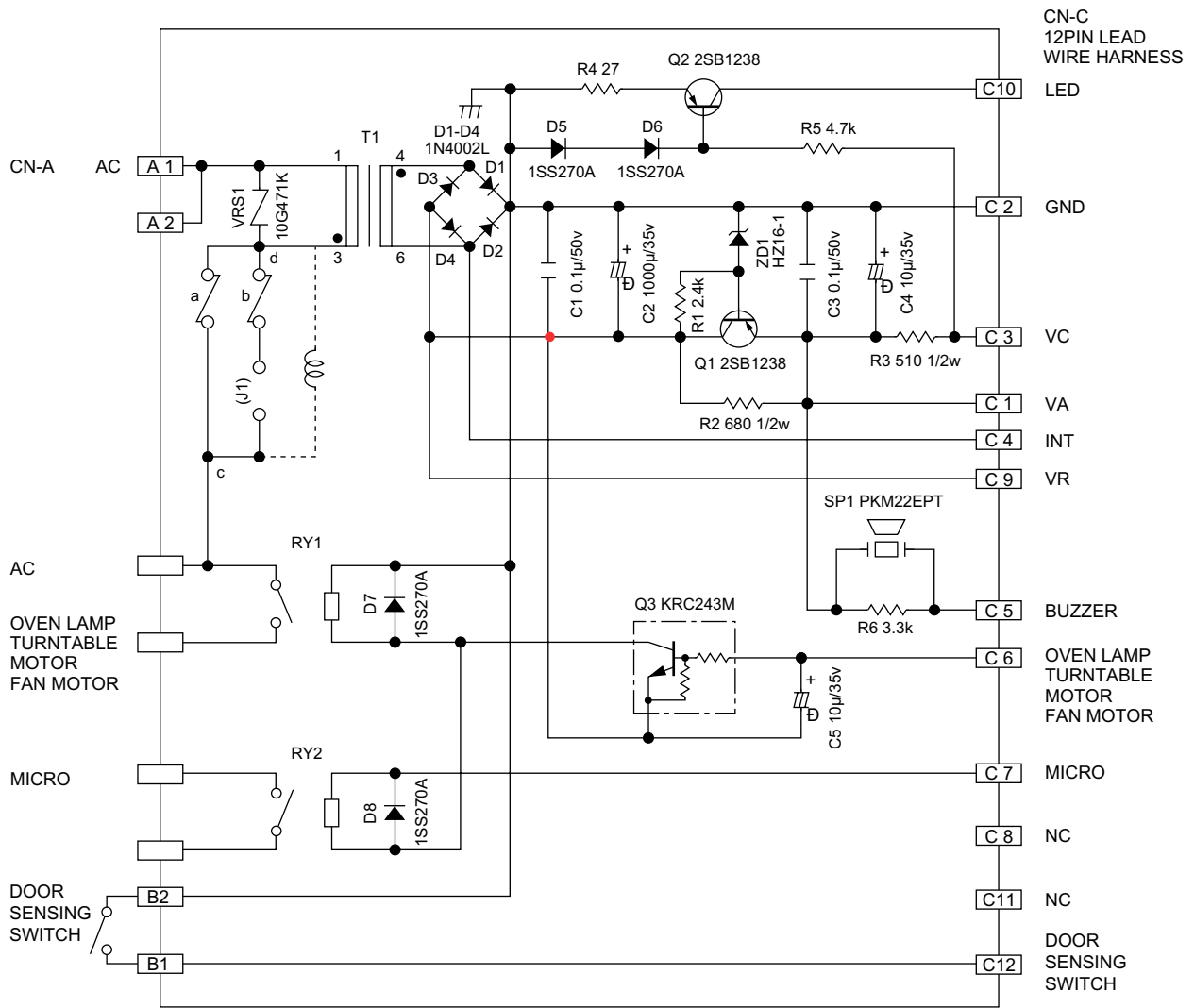


Figure S-2. Power Unit Circuit

[3] LSI Unit Circuit

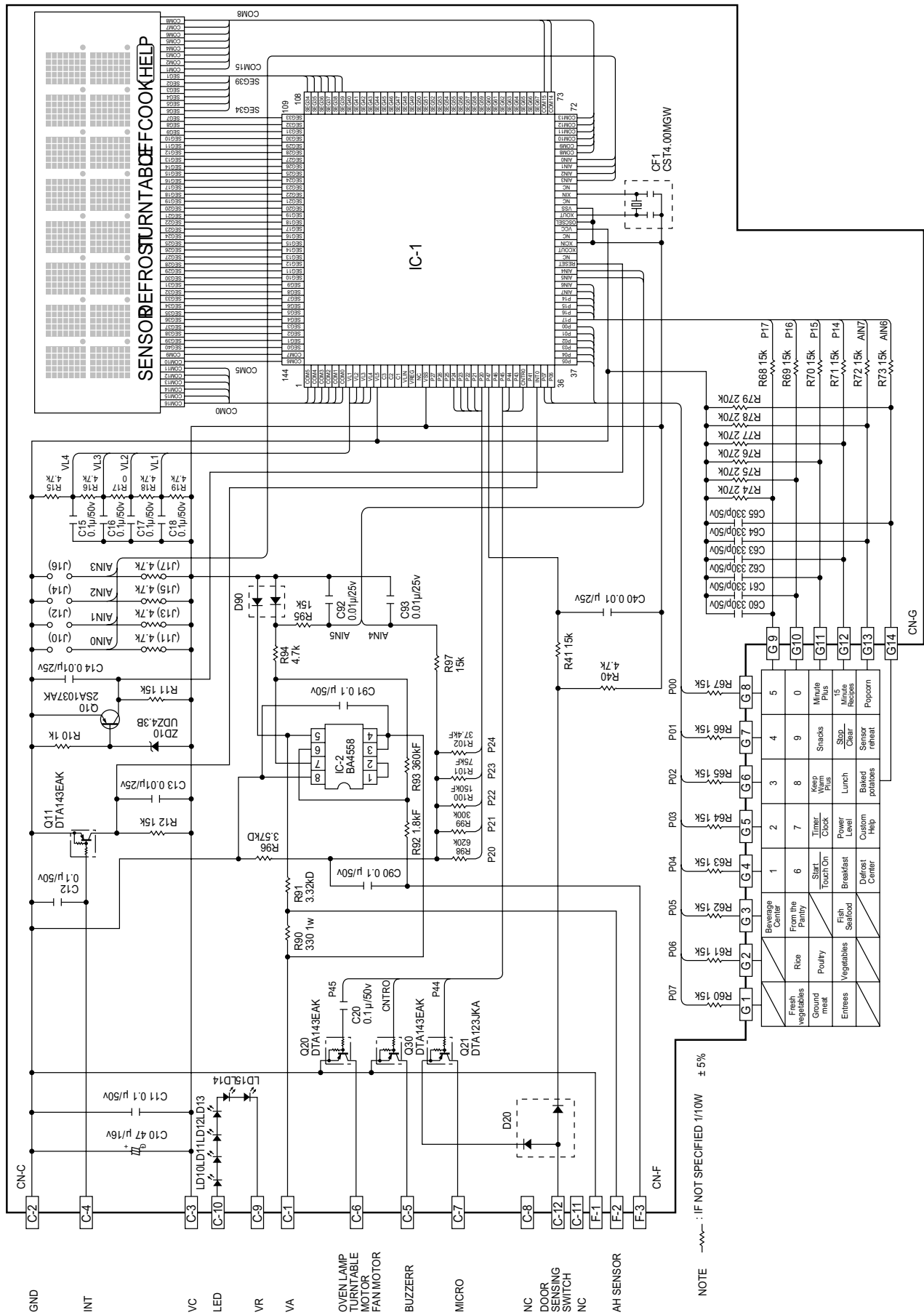


Figure S-3. LSI Unit Circuit

[4] Printed Wiring Board of Power Unit

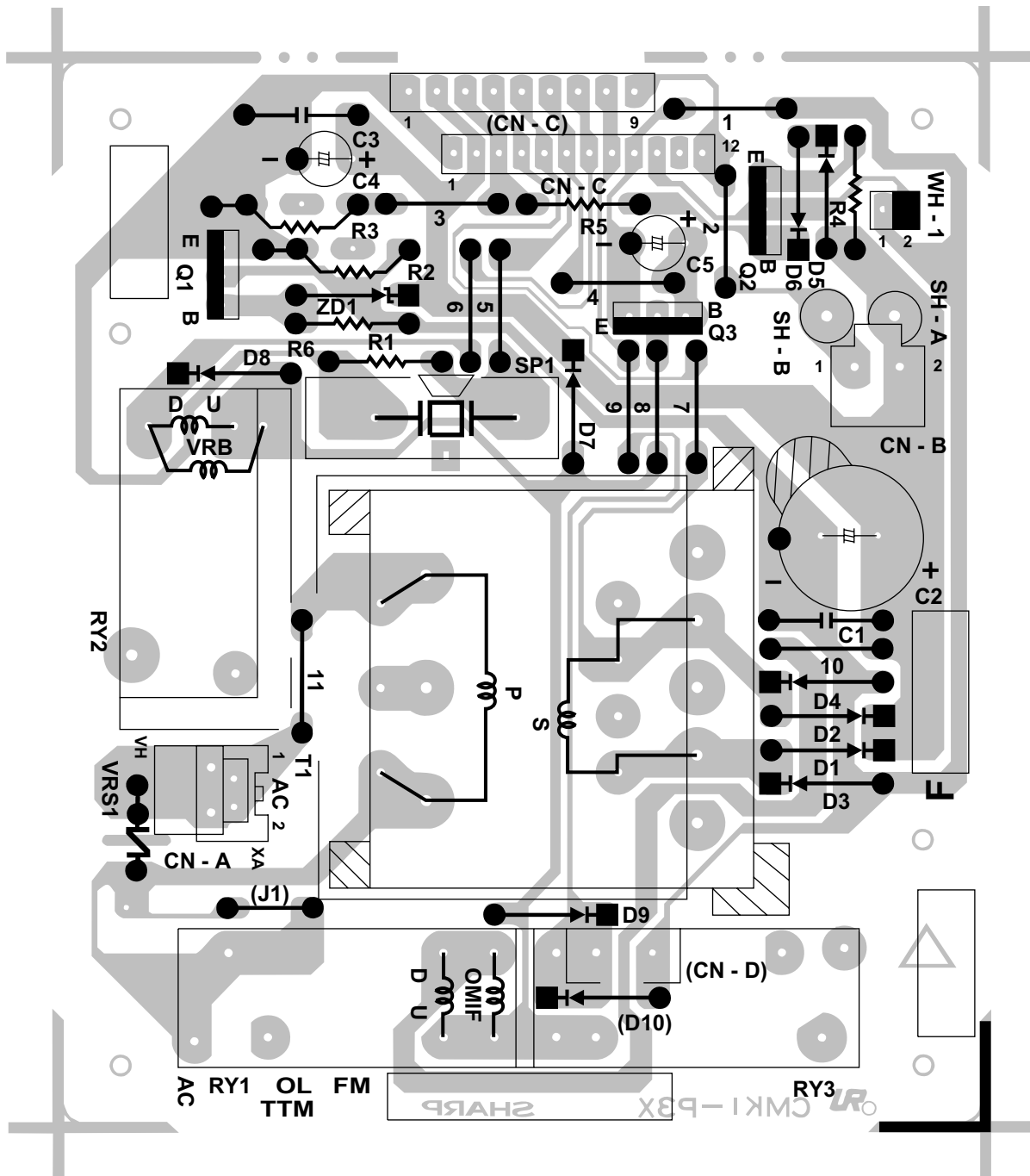


Figure S-4. Printed Wiring Board of Power Unit