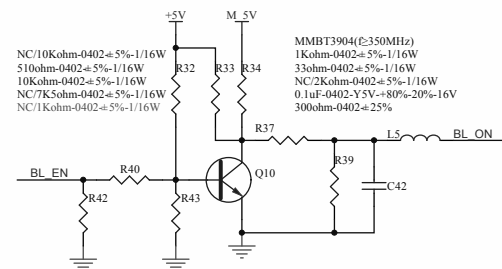
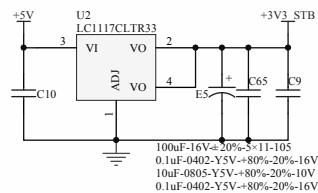
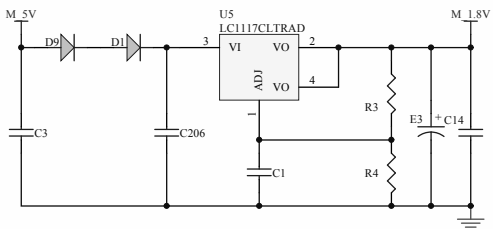
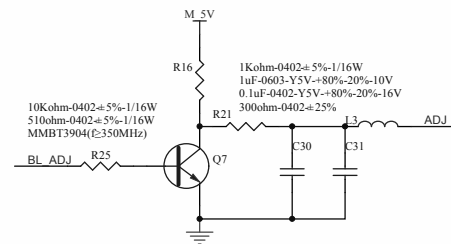
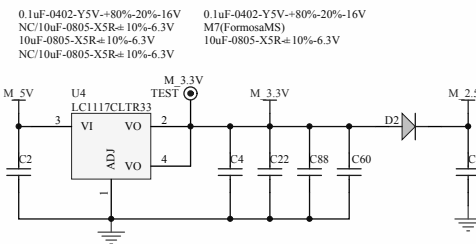
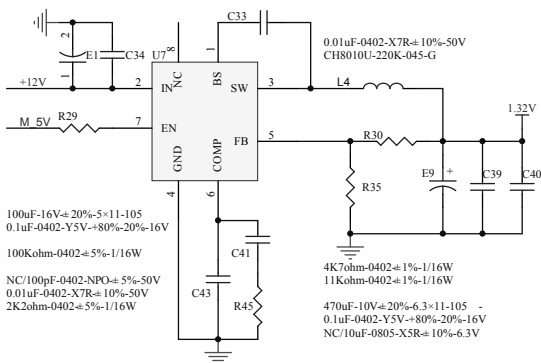
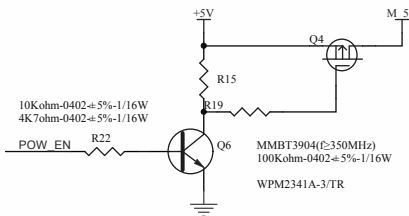
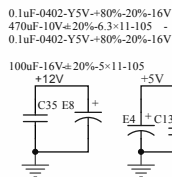
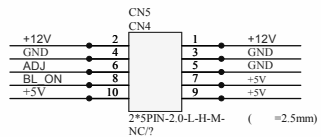
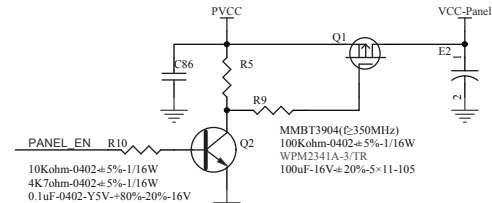
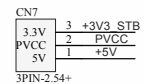
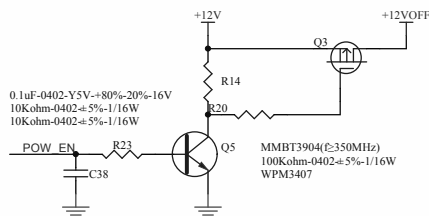
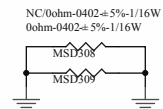
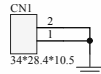
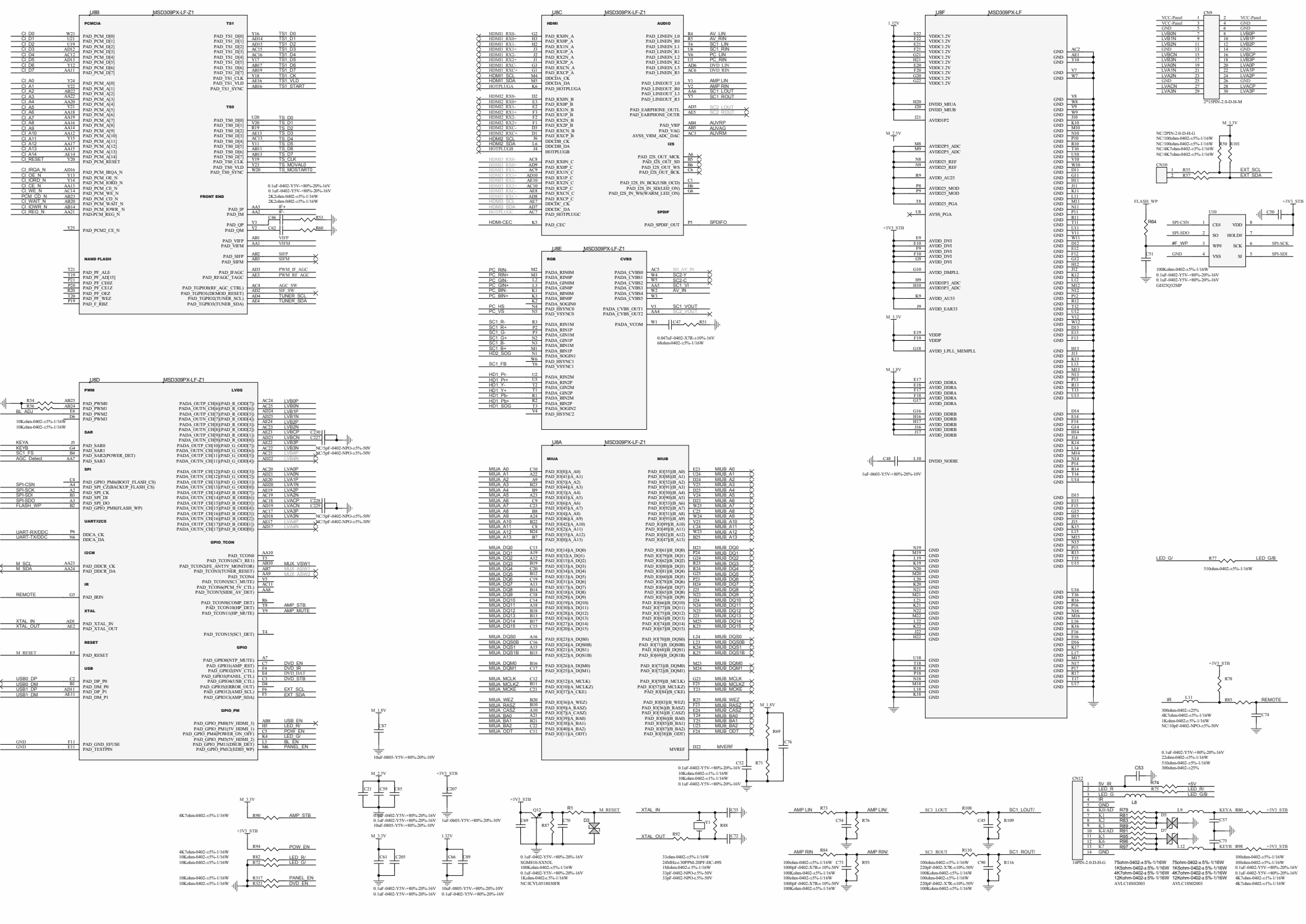


T.MSD309.61A 11365

MARK





PCMCIA

C1 D0	W21	PAD_PCM [D0]
C1 D1	W22	PAD_PCM [D1]
C1 D2	W23	PAD_PCM [D2]
C1 D3	W24	PAD_PCM [D3]
C1 D4	W25	PAD_PCM [D4]
C1 D5	W26	PAD_PCM [D5]
C1 D6	W27	PAD_PCM [D6]
C1 D7	W28	PAD_PCM [D7]
C1 A0	Y24	PAD_PCM [A0]
C1 A1	Y25	PAD_PCM [A1]
C1 A2	Y26	PAD_PCM [A2]
C1 A3	Y27	PAD_PCM [A3]
C1 A4	Y28	PAD_PCM [A4]
C1 A5	Y29	PAD_PCM [A5]
C1 A6	Y30	PAD_PCM [A6]
C1 A7	Y31	PAD_PCM [A7]
C1 A8	Y32	PAD_PCM [A8]
C1 A9	Y33	PAD_PCM [A9]
C1 A10	Y34	PAD_PCM [A10]
C1 A11	Y35	PAD_PCM [A11]
C1 A12	Y36	PAD_PCM [A12]
C1 A13	Y37	PAD_PCM [A13]
C1 A14	Y38	PAD_PCM [A14]
C1 A15	Y39	PAD_PCM [A15]
C1 RESET	Y20	PAD_PCM [RESET]
C1 BR0A_N	AD06	PAD_PCM [BR0A_N]
C1 BR0E_N	Y13	PAD_PCM [BR0E_N]
C1 BR0B_N	Y14	PAD_PCM [BR0B_N]
C1 BR0C_N	Y15	PAD_PCM [BR0C_N]
C1 BR0D_N	Y16	PAD_PCM [BR0D_N]
C1 BR0F_N	Y17	PAD_PCM [BR0F_N]
C1 BR0G_N	Y18	PAD_PCM [BR0G_N]
C1 BR0H_N	Y19	PAD_PCM [BR0H_N]
C1 BR0I_N	Y20	PAD_PCM [BR0I_N]
C1 BR0J_N	Y21	PAD_PCM [BR0J_N]
C1 BR0K_N	Y22	PAD_PCM [BR0K_N]
C1 BR0L_N	Y23	PAD_PCM [BR0L_N]
C1 BR0M_N	Y24	PAD_PCM [BR0M_N]
C1 BR0N_N	Y25	PAD_PCM [BR0N_N]
C1 BR0O_N	Y26	PAD_PCM [BR0O_N]
C1 BR0P_N	Y27	PAD_PCM [BR0P_N]
C1 BR0Q_N	Y28	PAD_PCM [BR0Q_N]
C1 BR0R_N	Y29	PAD_PCM [BR0R_N]
C1 BR0S_N	Y30	PAD_PCM [BR0S_N]
C1 BR0T_N	Y31	PAD_PCM [BR0T_N]
C1 BR0U_N	Y32	PAD_PCM [BR0U_N]
C1 BR0V_N	Y33	PAD_PCM [BR0V_N]
C1 BR0W_N	Y34	PAD_PCM [BR0W_N]
C1 BR0X_N	Y35	PAD_PCM [BR0X_N]
C1 BR0Y_N	Y36	PAD_PCM [BR0Y_N]
C1 BR0Z_N	Y37	PAD_PCM [BR0Z_N]
C1 BR0AA	Y38	PAD_PCM [BR0AA]
C1 BR0AB	Y39	PAD_PCM [BR0AB]
C1 BR0AC	Y40	PAD_PCM [BR0AC]
C1 BR0AD	Y41	PAD_PCM [BR0AD]
C1 BR0AE	Y42	PAD_PCM [BR0AE]
C1 BR0AF	Y43	PAD_PCM [BR0AF]
C1 BR0AG	Y44	PAD_PCM [BR0AG]
C1 BR0AH	Y45	PAD_PCM [BR0AH]
C1 BR0AI	Y46	PAD_PCM [BR0AI]
C1 BR0AJ	Y47	PAD_PCM [BR0AJ]
C1 BR0AK	Y48	PAD_PCM [BR0AK]
C1 BR0AL	Y49	PAD_PCM [BR0AL]
C1 BR0AM	Y50	PAD_PCM [BR0AM]
C1 BR0AN	Y51	PAD_PCM [BR0AN]
C1 BR0AO	Y52	PAD_PCM [BR0AO]
C1 BR0AP	Y53	PAD_PCM [BR0AP]
C1 BR0AQ	Y54	PAD_PCM [BR0AQ]
C1 BR0AR	Y55	PAD_PCM [BR0AR]
C1 BR0AS	Y56	PAD_PCM [BR0AS]
C1 BR0AT	Y57	PAD_PCM [BR0AT]
C1 BR0AU	Y58	PAD_PCM [BR0AU]
C1 BR0AV	Y59	PAD_PCM [BR0AV]
C1 BR0AW	Y60	PAD_PCM [BR0AW]
C1 BR0AX	Y61	PAD_PCM [BR0AX]
C1 BR0AY	Y62	PAD_PCM [BR0AY]
C1 BR0AZ	Y63	PAD_PCM [BR0AZ]
C1 BR0BA	Y64	PAD_PCM [BR0BA]
C1 BR0BB	Y65	PAD_PCM [BR0BB]
C1 BR0BC	Y66	PAD_PCM [BR0BC]
C1 BR0BD	Y67	PAD_PCM [BR0BD]
C1 BR0BE	Y68	PAD_PCM [BR0BE]
C1 BR0BF	Y69	PAD_PCM [BR0BF]
C1 BR0BG	Y70	PAD_PCM [BR0BG]
C1 BR0BH	Y71	PAD_PCM [BR0BH]
C1 BR0BI	Y72	PAD_PCM [BR0BI]
C1 BR0BJ	Y73	PAD_PCM [BR0BJ]
C1 BR0BK	Y74	PAD_PCM [BR0BK]
C1 BR0BL	Y75	PAD_PCM [BR0BL]
C1 BR0BM	Y76	PAD_PCM [BR0BM]
C1 BR0BN	Y77	PAD_PCM [BR0BN]
C1 BR0BO	Y78	PAD_PCM [BR0BO]
C1 BR0BP	Y79	PAD_PCM [BR0BP]
C1 BR0BQ	Y80	PAD_PCM [BR0BQ]
C1 BR0BR	Y81	PAD_PCM [BR0BR]
C1 BR0BS	Y82	PAD_PCM [BR0BS]
C1 BR0BT	Y83	PAD_PCM [BR0BT]
C1 BR0BU	Y84	PAD_PCM [BR0BU]
C1 BR0BV	Y85	PAD_PCM [BR0BV]
C1 BR0BW	Y86	PAD_PCM [BR0BW]
C1 BR0BX	Y87	PAD_PCM [BR0BX]
C1 BR0BY	Y88	PAD_PCM [BR0BY]
C1 BR0BZ	Y89	PAD_PCM [BR0BZ]
C1 BR0CA	Y90	PAD_PCM [BR0CA]
C1 BR0CB	Y91	PAD_PCM [BR0CB]
C1 BR0CC	Y92	PAD_PCM [BR0CC]
C1 BR0CD	Y93	PAD_PCM [BR0CD]
C1 BR0CE	Y94	PAD_PCM [BR0CE]
C1 BR0CF	Y95	PAD_PCM [BR0CF]
C1 BR0CG	Y96	PAD_PCM [BR0CG]
C1 BR0CH	Y97	PAD_PCM [BR0CH]
C1 BR0CI	Y98	PAD_PCM [BR0CI]
C1 BR0CJ	Y99	PAD_PCM [BR0CJ]
C1 BR0CK	Y100	PAD_PCM [BR0CK]
C1 BR0CL	Y101	PAD_PCM [BR0CL]
C1 BR0CM	Y102	PAD_PCM [BR0CM]
C1 BR0CN	Y103	PAD_PCM [BR0CN]
C1 BR0CO	Y104	PAD_PCM [BR0CO]
C1 BR0CP	Y105	PAD_PCM [BR0CP]
C1 BR0CQ	Y106	PAD_PCM [BR0CQ]
C1 BR0CR	Y107	PAD_PCM [BR0CR]
C1 BR0CS	Y108	PAD_PCM [BR0CS]
C1 BR0CT	Y109	PAD_PCM [BR0CT]
C1 BR0CU	Y110	PAD_PCM [BR0CU]
C1 BR0CV	Y111	PAD_PCM [BR0CV]
C1 BR0CW	Y112	PAD_PCM [BR0CW]
C1 BR0CX	Y113	PAD_PCM [BR0CX]
C1 BR0CY	Y114	PAD_PCM [BR0CY]
C1 BR0CZ	Y115	PAD_PCM [BR0CZ]
C1 BR0DA	Y116	PAD_PCM [BR0DA]
C1 BR0DB	Y117	PAD_PCM [BR0DB]
C1 BR0DC	Y118	PAD_PCM [BR0DC]
C1 BR0DD	Y119	PAD_PCM [BR0DD]
C1 BR0DE	Y120	PAD_PCM [BR0DE]
C1 BR0DF	Y121	PAD_PCM [BR0DF]
C1 BR0DG	Y122	PAD_PCM [BR0DG]
C1 BR0DH	Y123	PAD_PCM [BR0DH]
C1 BR0DI	Y124	PAD_PCM [BR0DI]
C1 BR0DJ	Y125	PAD_PCM [BR0DJ]
C1 BR0DK	Y126	PAD_PCM [BR0DK]
C1 BR0DL	Y127	PAD_PCM [BR0DL]
C1 BR0DM	Y128	PAD_PCM [BR0DM]
C1 BR0DN	Y129	PAD_PCM [BR0DN]
C1 BR0DO	Y130	PAD_PCM [BR0DO]
C1 BR0DP	Y131	PAD_PCM [BR0DP]
C1 BR0DQ	Y132	PAD_PCM [BR0DQ]
C1 BR0DR	Y133	PAD_PCM [BR0DR]
C1 BR0DS	Y134	PAD_PCM [BR0DS]
C1 BR0DT	Y135	PAD_PCM [BR0DT]
C1 BR0DU	Y136	PAD_PCM [BR0DU]
C1 BR0DV	Y137	PAD_PCM [BR0DV]
C1 BR0DW	Y138	PAD_PCM [BR0DW]
C1 BR0DX	Y139	PAD_PCM [BR0DX]
C1 BR0DY	Y140	PAD_PCM [BR0DY]
C1 BR0DZ	Y141	PAD_PCM [BR0DZ]
C1 BR0EA	Y142	PAD_PCM [BR0EA]
C1 BR0EB	Y143	PAD_PCM [BR0EB]
C1 BR0EC	Y144	PAD_PCM [BR0EC]
C1 BR0ED	Y145	PAD_PCM [BR0ED]
C1 BR0EE	Y146	PAD_PCM [BR0EE]
C1 BR0EF	Y147	PAD_PCM [BR0EF]
C1 BR0EG	Y148	PAD_PCM [BR0EG]
C1 BR0EH	Y149	PAD_PCM [BR0EH]
C1 BR0EI	Y150	PAD_PCM [BR0EI]
C1 BR0EJ	Y151	PAD_PCM [BR0EJ]
C1 BR0EK	Y152	PAD_PCM [BR0EK]
C1 BR0EL	Y153	PAD_PCM [BR0EL]
C1 BR0EM	Y154	PAD_PCM [BR0EM]
C1 BR0EN	Y155	PAD_PCM [BR0EN]
C1 BR0EO	Y156	PAD_PCM [BR0EO]
C1 BR0EP	Y157	PAD_PCM [BR0EP]
C1 BR0EQ	Y158	PAD_PCM [BR0EQ]
C1 BR0ER	Y159	PAD_PCM [BR0ER]
C1 BR0ES	Y160	PAD_PCM [BR0ES]
C1 BR0ET	Y161	PAD_PCM [BR0ET]
C1 BR0EU	Y162	PAD_PCM [BR0EU]
C1 BR0EV	Y163	PAD_PCM [BR0EV]
C1 BR0EW	Y164	PAD_PCM [BR0EW]
C1 BR0EX	Y165	PAD_PCM [BR0EX]
C1 BR0EY	Y166	PAD_PCM [BR0EY]
C1 BR0EZ	Y167	PAD_PCM [BR0EZ]
C1 BR0FA	Y168	PAD_PCM [BR0FA]
C1 BR0FB	Y169	PAD_PCM [BR0FB]
C1 BR0FC	Y170	PAD_PCM [BR0FC]
C1 BR0FD	Y171	PAD_PCM [BR0FD]
C1 BR0FE	Y172	PAD_PCM [BR0FE]
C1 BR0FF	Y173	PAD_PCM [BR0FF]
C1 BR0FG	Y174	PAD_PCM [BR0FG]
C1 BR0FH	Y175	PAD_PCM [BR0FH]
C1 BR0FI	Y176	PAD_PCM [BR0FI]
C1 BR0FJ	Y177	PAD_PCM [BR0FJ]
C1 BR0FK	Y178	PAD_PCM [BR0FK]
C1 BR0FL	Y179	PAD_PCM [BR0FL]
C1 BR0FM	Y180	PAD_PCM [BR0FM]
C1 BR0FN	Y181	PAD_PCM [BR0FN]
C1 BR0FO	Y182	PAD_PCM [BR0FO]
C1 BR0FP	Y183	PAD_PCM [BR0FP]
C1 BR0FQ	Y184	PAD_PCM [BR0FQ]
C1 BR0FR	Y185	PAD_PCM [BR0FR]
C1 BR0FS	Y186	PAD_PCM [BR0FS]
C1 BR0FT	Y187	PAD_PCM [BR0FT]
C1 BR0FU	Y188	PAD_PCM [BR0FU]
C1 BR0FV	Y189	PAD_PCM [BR0FV]
C1 BR0FW	Y190	PAD_PCM [BR0FW]
C1 BR0FX	Y191	PAD_PCM [BR0FX]
C1 BR0FY	Y192	PAD_PCM [BR0FY]
C1 BR0FZ	Y193	PAD_PCM [BR0FZ]
C1 BR0GA	Y194	PAD_PCM [BR0GA]
C1 BR0GB	Y195	PAD_PCM [BR0GB]
C1 BR0GC	Y196	PAD_PCM [BR0GC]
C1 BR0GD	Y197	PAD_PCM [BR0GD]
C1 BR0GE	Y198	PAD_PCM [BR0GE]
C1 BR0GF	Y199	PAD_PCM [BR0GF]
C1 BR0GG	Y200	PAD_PCM [BR0GG]
C1 BR0GH	Y201	PAD_PCM [BR0GH]
C1 BR0GI	Y202	PAD_PCM [BR0GI]
C1 BR0GJ	Y203	PAD_PCM [BR0GJ]
C1 BR0GK	Y204	PAD_PCM [BR0GK]
C1 BR0GL	Y205	PAD_PCM [BR0GL]
C1 BR0GM	Y206	PAD_PCM [BR0GM]
C1 BR0GN	Y207	PAD_PCM [BR0GN]
C1 BR0GO	Y208	PAD_PCM [BR0GO]
C1 BR0GP	Y209	PAD_PCM [BR0GP]
C1 BR0GQ	Y210	PAD_PCM [BR0GQ]
C1 BR0GR	Y211	PAD_PCM [BR0GR]
C1 BR0GS	Y212	PAD_PCM [BR0GS]
C1 BR0GT	Y213	PAD_PCM [BR0GT]
C1 BR0GU	Y214	PAD_PCM [BR0GU]
C1 BR0GV	Y215	PAD_PCM [BR0GV]
C1 BR0GW	Y216	PAD_PCM [BR0GW]
C1 BR0GX	Y217	PAD_PCM [BR0GX]
C1 BR0GY	Y218	PAD_PCM [BR0GY]
C1 BR0GZ	Y219	PAD_PCM [BR0GZ]
C1 BR0HA	Y220	PAD_PCM [BR0HA]
C1 BR0HB	Y221	PAD_PCM [BR0HB]
C1 BR0HC	Y222	PAD_PCM [BR0HC]
C1 BR0HD	Y223	PAD_PCM [BR0HD]
C1 BR0HE	Y224	PAD_PCM [BR0HE]
C1 BR0HF	Y225	PAD_PCM [BR0HF]
C1 BR0HG	Y226	PAD_PCM [BR0HG]
C1 BR0HH	Y227	PAD_PCM [BR0HH]
C1 BR0HI	Y228	PAD_PCM [BR0HI]
C1 BR0HJ	Y229	PAD_PCM [BR0HJ]
C1 BR0HK	Y230	PAD_PCM [BR0HK]
C1 BR0HL	Y231	PAD_PCM [BR0HL]
C1 BR0HM	Y232	PAD_PCM [BR0HM]
C1 BR0HN	Y233	PAD_PCM [BR0HN]
C1 BR0HO	Y234	PAD_PCM [BR0HO]
C1 BR0HP	Y235	PAD_PCM [BR0HP]
C1 BR0HQ	Y236	PAD_PCM [BR0HQ]
C1 BR0HR	Y237	PAD_PCM [BR0HR]
C1 BR0HS	Y238	PAD_PCM [BR0HS]
C1 BR0HT	Y239	PAD_PCM [BR0HT]
C1 BR0HU	Y240	PAD_PCM [BR0HU]
C1 BR0HV	Y241	PAD_PCM [BR0HV]
C1 BR0HW	Y242	PAD_PCM [BR0HW]
C1 BR0HX	Y243	PAD_PCM [BR0HX]
C1 BR0HY	Y244	PAD_PCM [BR0HY]
C1 BR0HZ	Y245	PAD_PCM [BR0HZ]
C1 BR0IA	Y246	PAD_PCM [BR0IA]
C1 BR0IB	Y247	PAD_PCM [BR0IB]
C1 BR0IC	Y248	PAD_PCM [BR0IC]
C1 BR0ID	Y249	PAD_PCM [BR0ID]
C1 BR0IE	Y250	PAD_PCM [BR0IE]
C1 BR0IF	Y251	PAD_PCM [BR0IF]
C1 BR0IG	Y252	PAD_PCM [BR0IG]
C1 BR0IH	Y253	PAD_PCM [BR0IH]
C1 BR0II	Y254	PAD_PCM [BR0II]
C1 BR0IJ	Y255	PAD_PCM [BR0IJ]
C1 BR0IK	Y256	PAD_PCM [BR0IK]
C1 BR0IL	Y257	PAD_PCM [BR0IL]
C1 BR0IM	Y258	PAD_PCM [BR0IM]
C1 BR0IN	Y259	PAD_PCM [BR0IN]
C1 BR0IO	Y260	PAD_PCM [BR0IO]
C1 BR0IP	Y261	PAD_PCM [BR0IP]
C1 BR0IQ	Y262	PAD_PCM [BR0IQ]
C1 BR0IR	Y263	PAD_PCM [BR0IR]
C1 BR0IS	Y264	PAD_PCM [BR0IS]
C1 BR0IT	Y265	PAD_PCM [BR0IT]
C1 BR0IU	Y266	PAD_PCM [BR0IU]
C1 BR0IV	Y267	PAD_PCM [BR0IV]
C1 BR0IW	Y268	PAD_PCM [BR0IW]
C1 BR0IX	Y269	PAD_PCM [BR0IX]
C1 BR0IY	Y270	PAD_PCM [BR0IY]
C1 BR0IZ	Y271	PAD_PCM [BR0IZ]
C1 BR0JA	Y272	PAD_PCM [BR0JA]
C1 BR0JB	Y273	PAD_PCM [BR0JB]
C1 BR0JC	Y274	PAD_PCM [BR0JC]
C1 BR0JD	Y275	PAD_PCM [BR0JD]
C1 BR0JE	Y276	PAD_PCM [BR0JE]
C1 BR0JF	Y277	PAD_PCM [BR0JF]
C1 BR0JG	Y278	PAD_PCM [BR0JG]
C1 BR0JH	Y279	PAD_PCM [BR0JH]
C1 BR0JI	Y280	PAD_PCM [BR0JI]
C1 BR0JJ	Y281	PAD_PCM [BR0JJ]
C1 BR0JK	Y282	PAD_PCM [BR0JK]
C1 BR0JL	Y283	PAD_PCM [BR0JL]
C1 BR0JM	Y284	PAD_PCM [BR0JM]
C1 BR0JN	Y285	PAD_PCM [BR0JN]
C1 BR0JO	Y286	PAD_PCM [BR0JO]
C1 BR0JP	Y287	PAD_PCM [BR0JP]
C1 BR0JQ	Y288	PAD_PCM [BR0JQ]
C1 BR0JR	Y289	PAD_PCM [BR0JR]
C1 BR0JS	Y290	PAD_PCM [BR0JS]
C1 BR0JT	Y291	PAD_PCM [BR0JT]
C1 BR0JU	Y292	PAD_PCM [BR0JU]
C1 BR0JV	Y293	PAD_PCM [BR0JV]
C1 BR0JW	Y294	PAD_PCM [BR0JW]
C1 BR0JX	Y295	PAD_PCM [BR0JX]
C1 BR0JY	Y296	PAD_PCM [BR0JY]
C1 BR0JZ	Y297	PAD_PCM [BR0JZ]
C1 BR0KA	Y298	PAD_PCM [BR0KA]
C1 BR0KB	Y299	PAD_PCM [BR0KB]
C1 BR0KC	Y300	PAD_PCM [BR0KC]
C1 BR0KD	Y301	PAD_PCM [BR0KD]
C1 BR0KE	Y302	PAD_PCM [BR0KE]
C1 BR0KF	Y303	PAD_PCM [BR0KF]
C1 BR0KG	Y304	PAD_PCM [BR0KG]
C1 BR0KH	Y305	PAD_PCM [BR0KH]
C1 BR0KI	Y306	PAD_PCM [BR0KI]
C1 BR0KJ	Y307	PAD_PCM [BR0KJ]
C1 BR0KL	Y308	PAD_PCM [BR0KL]
C1 BR0KM	Y309	PAD_PCM [BR0KM]
C1 BR0KN	Y310	PAD_PCM [BR0KN]
C1 BR0KO	Y311	PAD_PCM [BR0KO]
C1 BR0KP	Y312	PAD_PCM [BR0KP]
C1 BR0KQ	Y313	PAD_PCM [BR0KQ]
C1 BR0KR	Y314	PAD_PCM [BR0KR]
C1 BR0KS	Y315	PAD_PCM [BR0KS]
C1 BR0KT	Y316	PAD_PCM [BR0KT]
C1 BR0KU	Y317	PAD_PCM [BR0KU]
C1 BR0KV	Y318	PAD_PCM [BR0KV]
C1 BR0KW	Y319	PAD_PCM [BR0KW]
C1 BR0KX	Y320	PAD_PCM [BR0KX]
C1 BR0KY	Y321	PAD_PCM [BR0KY]
C1 BR0KZ	Y322	PAD_PCM [BR0KZ]
C1 BR0LA	Y323	PAD_PCM [BR0LA]
C1 BR0LB	Y324	PAD_PCM [BR0LB]
C1 BR0LC	Y325	PAD_PCM [BR0LC]
C1 BR0LD	Y326	PAD_PCM [BR0LD]
C1 BR0LE	Y327	PAD_PCM [BR0LE]
C1 BR0LF	Y328	PAD_PCM [BR0LF]
C1 BR0LG	Y329	PAD_PCM [BR0LG]
C1 BR0LH	Y330	PAD_PCM [BR0LH]
C1 BR0LI	Y331	PAD_PCM [BR0LI]
C1 BR0LJ	Y332	PAD_PCM [BR0LJ]
C1 BR0LK	Y333	PAD_PCM [BR0LK]
C1 BR0LL	Y334	PAD_PCM [BR0LL]
C1 BR0LM	Y335	PAD_PCM [BR0LM]
C1 BR0LN	Y336	PAD_PCM [BR0LN]
C1 BR0LO	Y337	PAD_PCM [BR0LO]
C1 BR0LP	Y338	PAD_PCM [BR0LP]
C1 BR0LQ	Y339	PAD_PCM [BR0LQ]
C1 BR0LR	Y340	PAD_PCM [BR0LR]
C1 BR0LS	Y341	PAD_PCM [BR0LS]
C1 BR0LT	Y342	PAD_PCM [BR0LT]
C1 BR0LU	Y343	PAD_PCM [BR0LU]
C1 BR0LV	Y344	PAD_PCM [BR0LV]
C1 BR0LW	Y345	PAD_PCM [BR0LW]
C1 BR0LX	Y346	PAD_PCM [BR0LX]
C1 BR0LY	Y347	PAD_PCM [BR0LY]
C1 BR0LZ	Y348	PAD_PCM [BR0LZ]
C1 BR0MA	Y349	PAD_PCM [BR0MA]
C1 BR0MB	Y350	PAD_PCM [BR0MB]
C1 BR0MC	Y351	PAD_PCM [BR0MC]
C1 BR0MD	Y352	PAD_PCM [BR0MD]
C1 BR0ME	Y353	PAD_PCM [BR0ME]
C1 BR0MF	Y354	PAD_PCM [BR0MF]
C1 BR0MG	Y355	PAD_PCM [BR0MG]
C1 BR0MH	Y356	PAD_PCM [BR0MH]
C1 BR0MI	Y3	

1

2

3

4

A

A

B

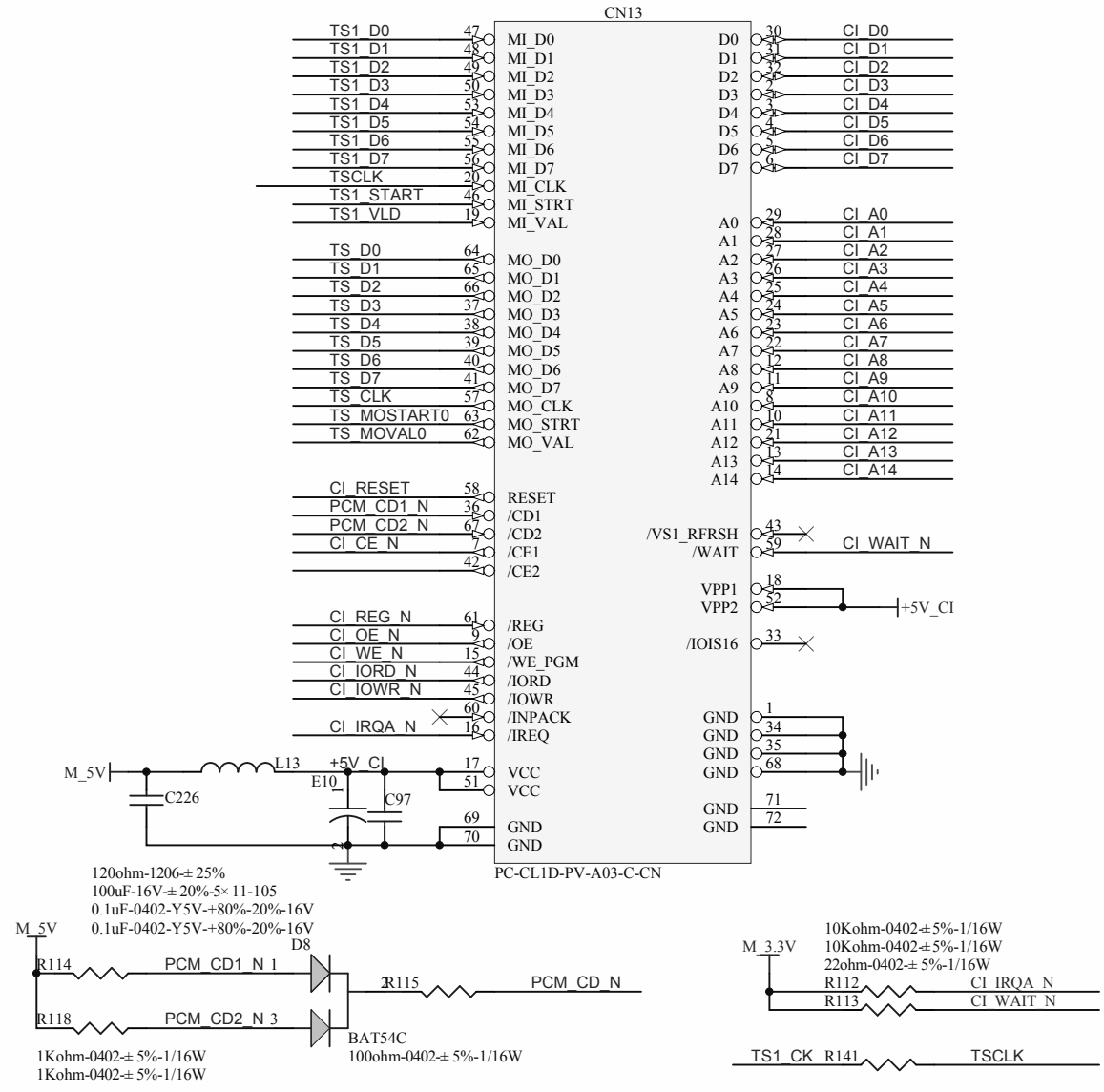
B

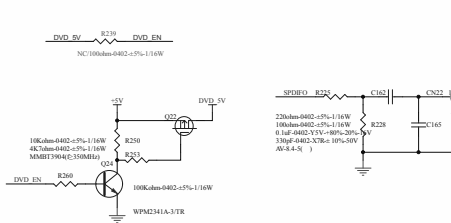
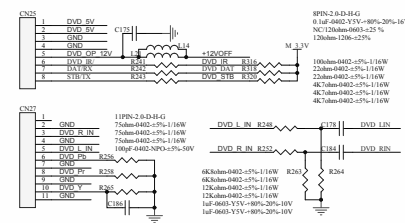
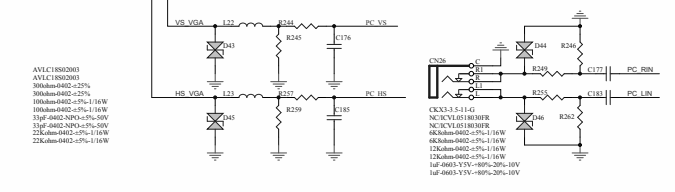
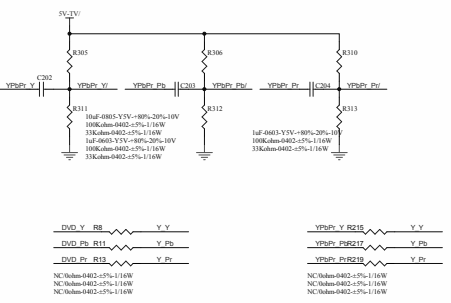
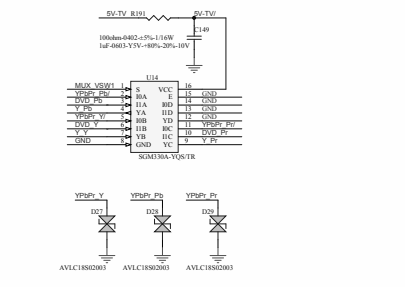
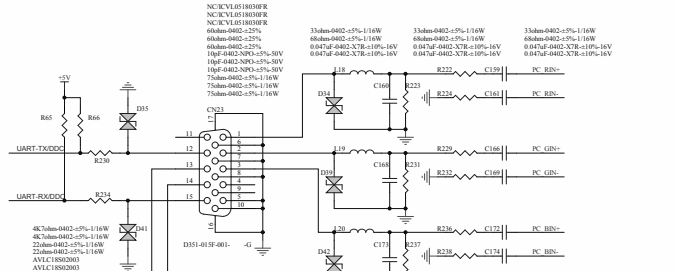
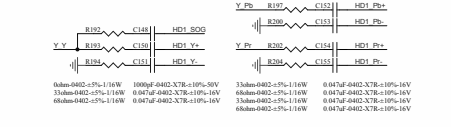
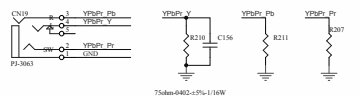
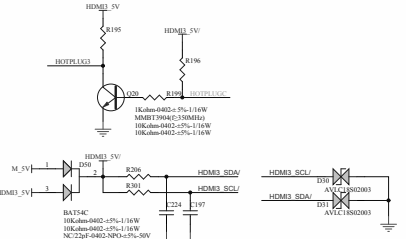
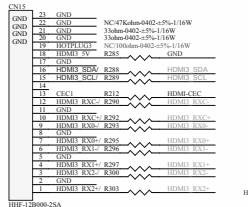
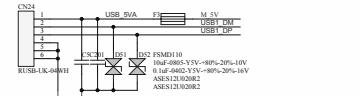
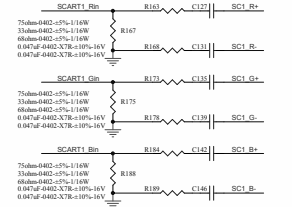
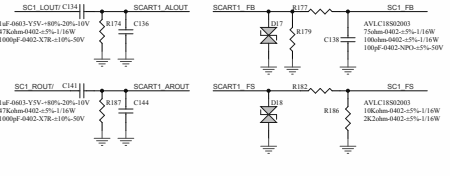
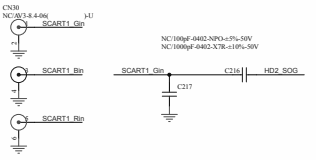
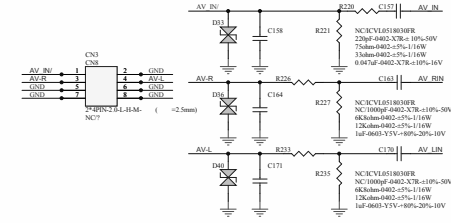
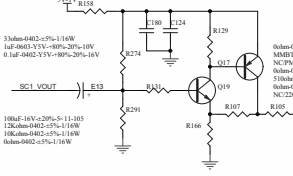
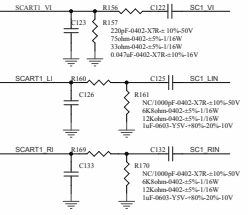
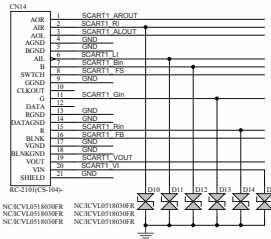
C

C

D

D





1

2

3

4

A

A

B

B

C

C

D

D

1

2

3

4

