

Micro System

TS7010

Service  
Service  
Service



# Service Manual

## TABLE OF CONTENTS

	Chapter
Location of PC Boards & Versions Variation .....	
Technical Specifications	
Safety Instruction	
Set Block Diagram	
Main Board	
Circuit Diagram	
Layout Diagram	
Display Board	
Circuit Diagram	
Layout Diagram	
Mechanical Exploded View	
Trouble Shooting	
Software Upgrade & Procedure To Restroe Product Setting	
Revision List	

© Copyright 2015 GIBSON Innovations Limited.

All rights reserved. No part of this publication may be reproduced, stored in a retrieval system or transmitted, in any form or by any means, electronic, mechanical, photocopying, or otherwise with out the prior permission of GIBSON Innovations.Philips and the Philips' Shield Emblem are registered trademarks of Koninklijke Philips N.V. and are used by GIBSON Innovations Limited under license from Koninklijke Philips N.V.

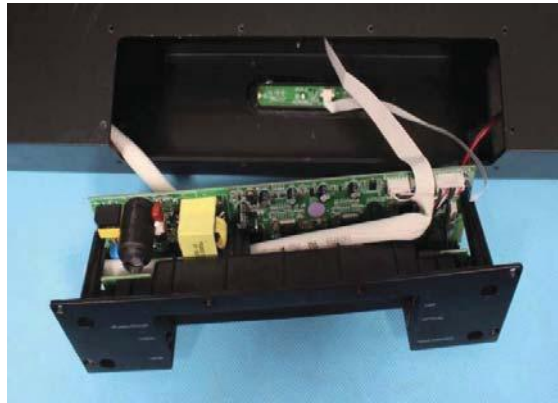
Published by Wei & Sam wk1544 Subject to modification

3140 038 63570

Version 1.0

1. Location of PC Boards

Main Board

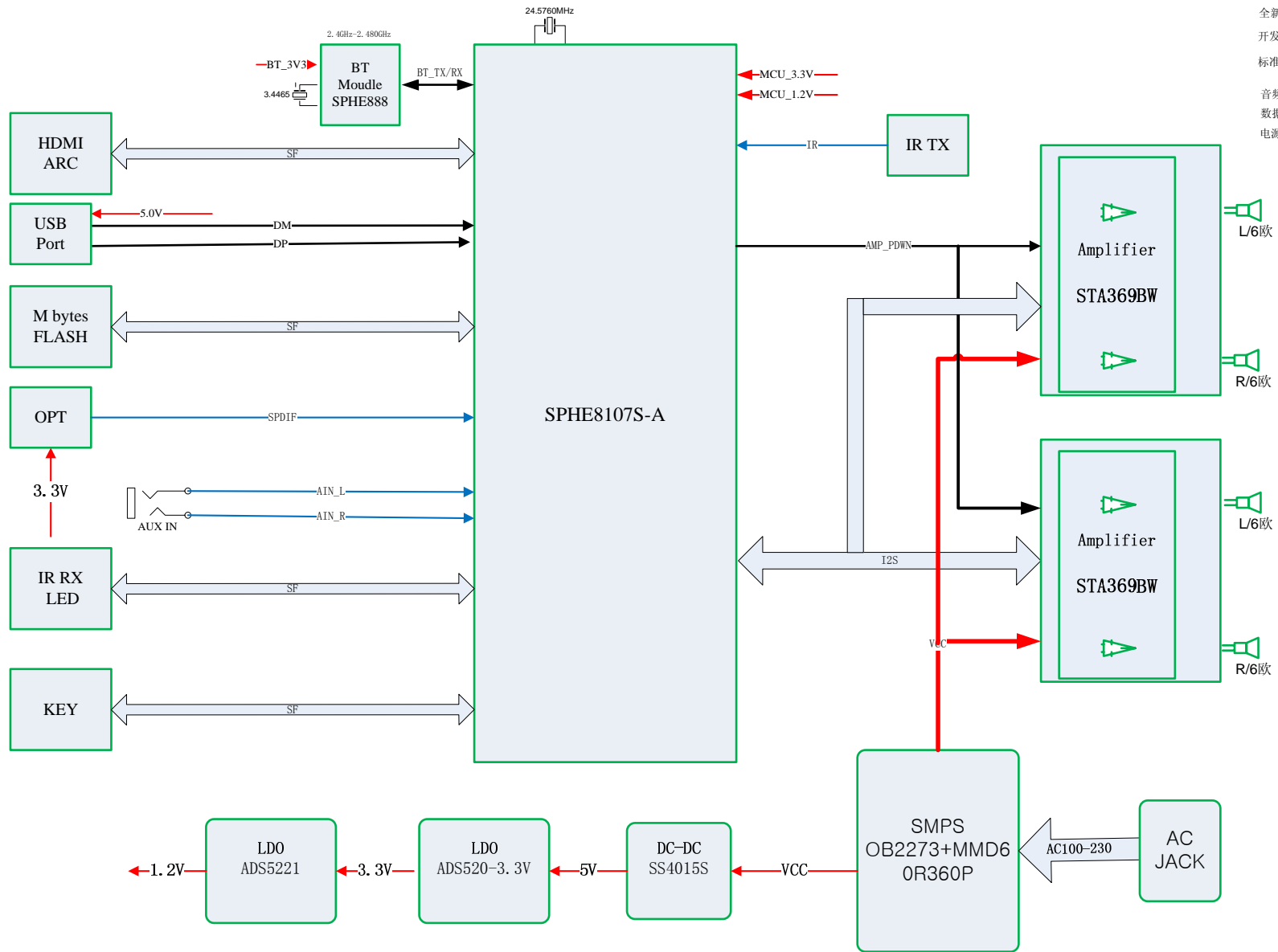


Versions Variation

Type/Version		TS7010				
		/12 (EU)				
Board in used	service Policy					
	Main Board	M				
	Display Board	M				

Tips: C--Component Level Repair  
M--Module Level Repair

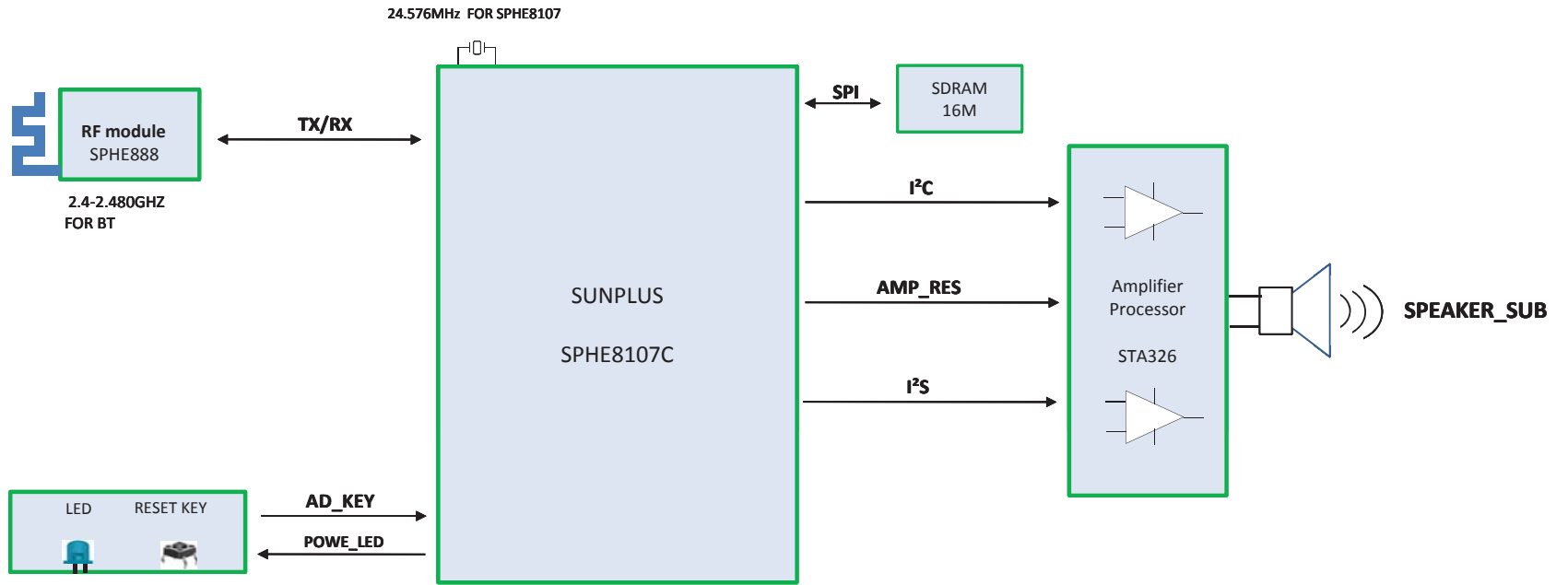
# TS7000 Block Diagram

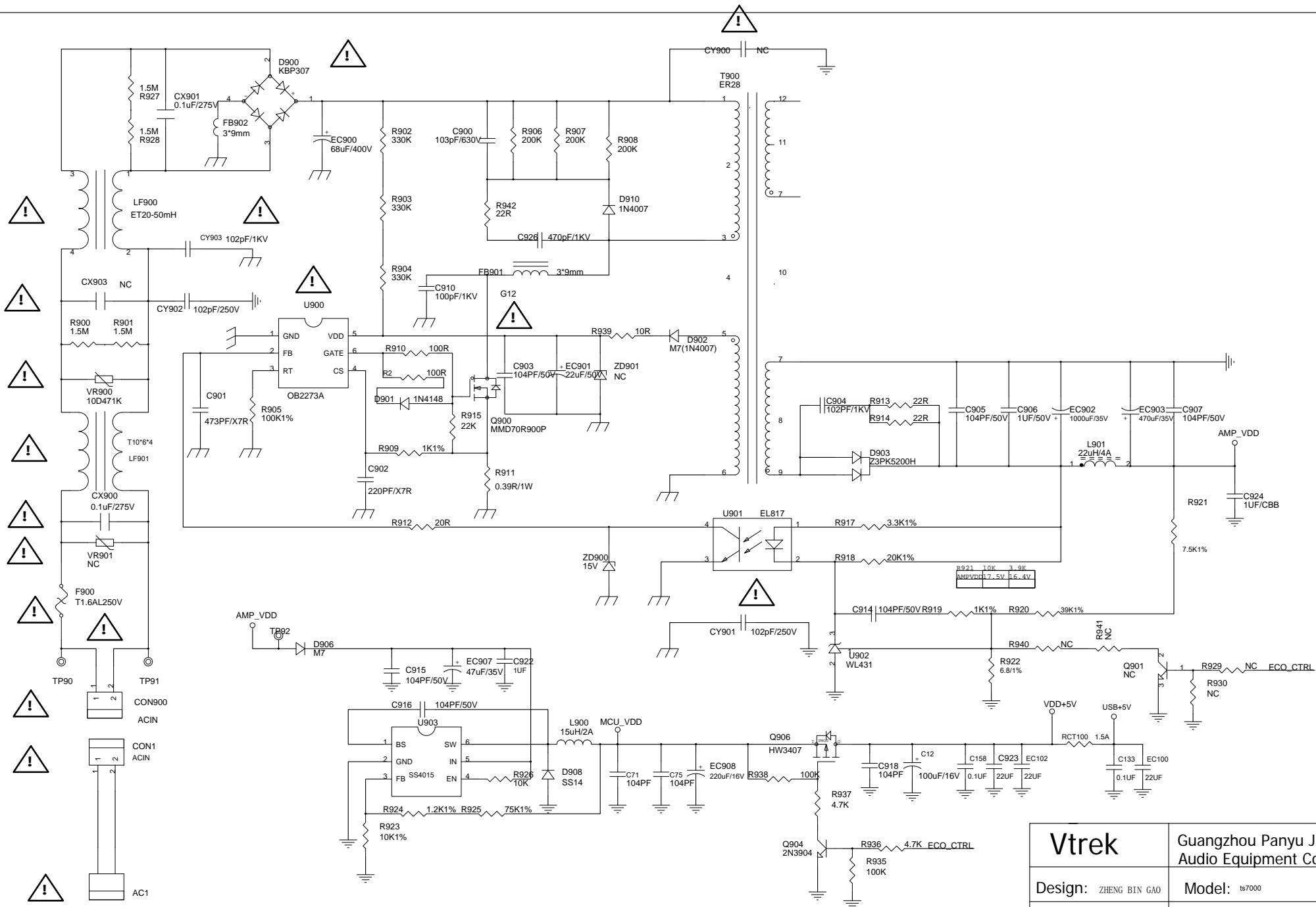


- 全新的模块 红色边框, 底为淡色80%
- 开发中模块 蓝色边框, 底为淡色80%
- 标准化模块 绿色边框, 底为淡色80%
- 音频信号 → 蓝色
- 数据信号 → 黑色
- 电源信号 → 红色

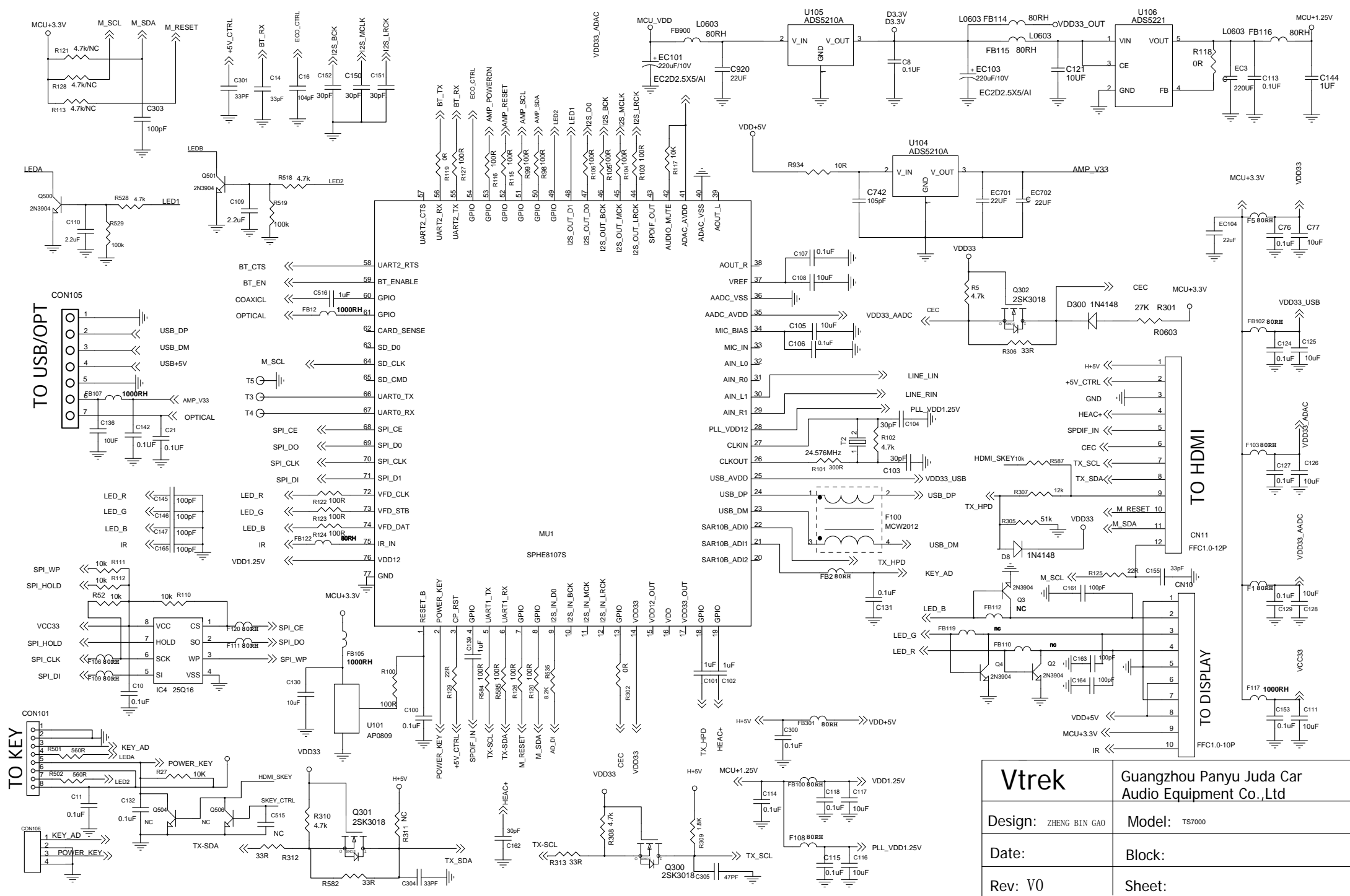
Drawn By:                      Check By:                      Approval By:                      VER:

# TS7010 SUBWOOFER Block Diagram

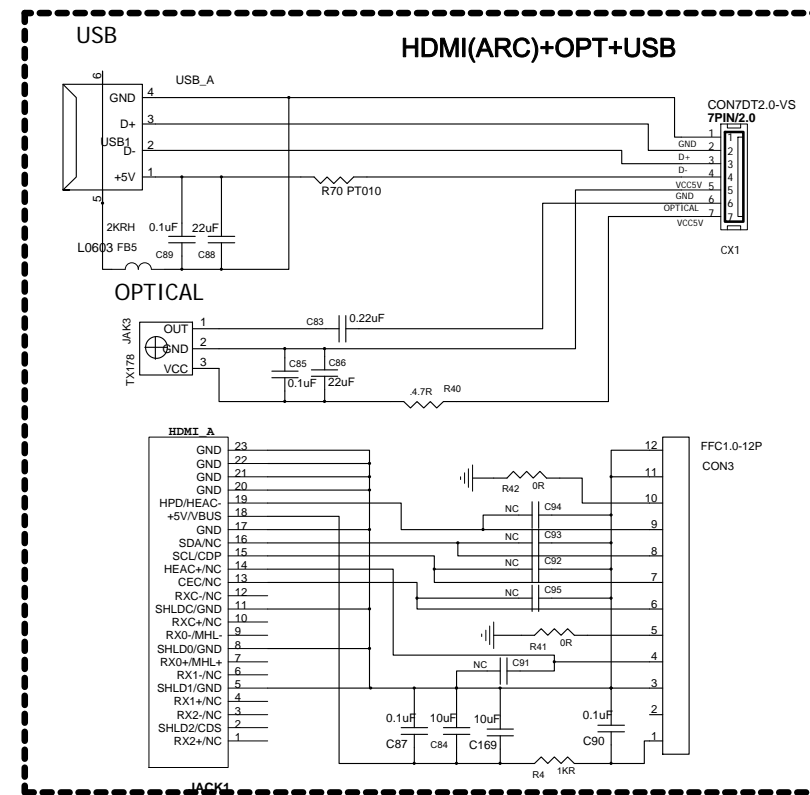
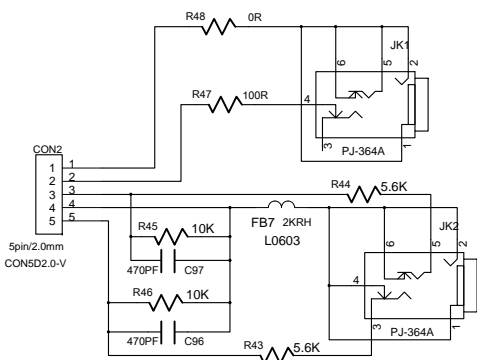
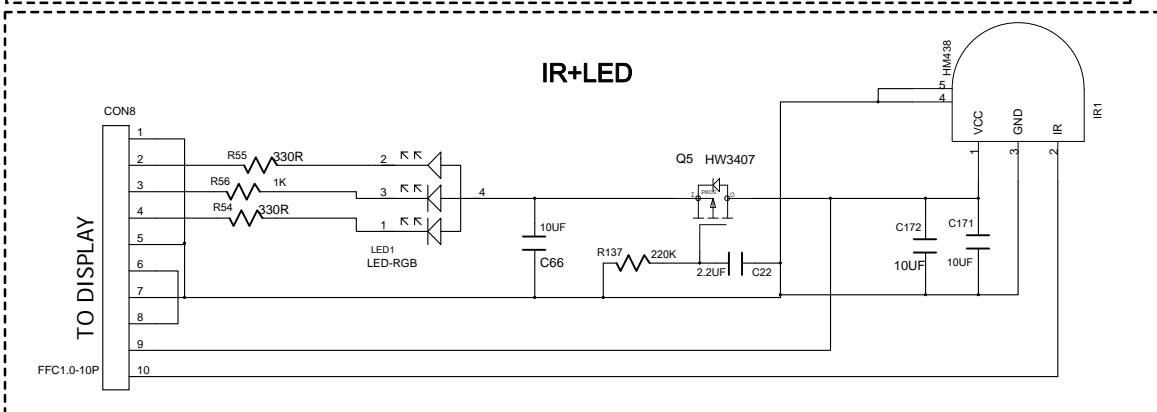
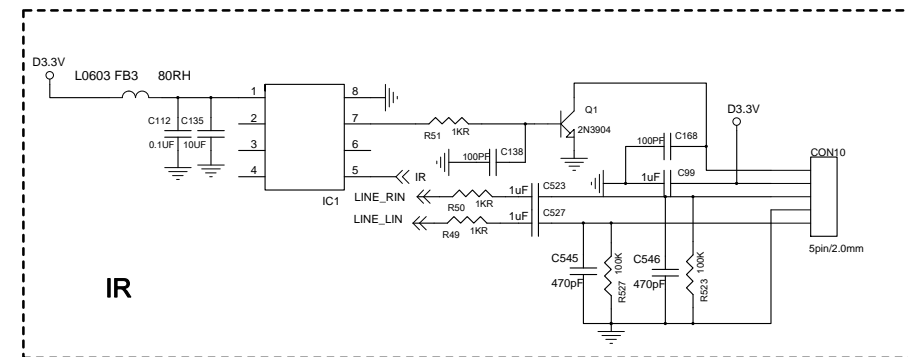
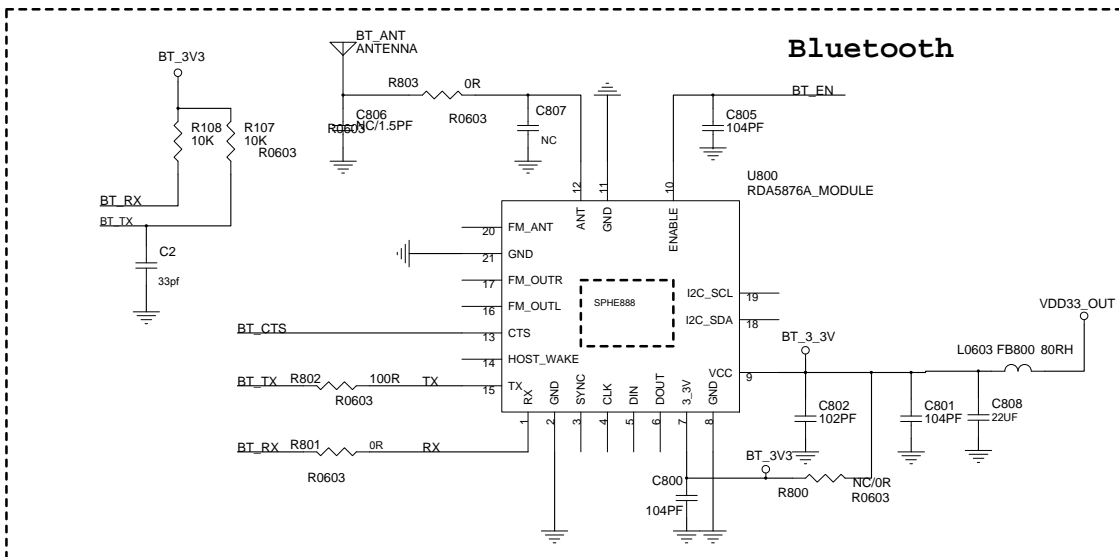




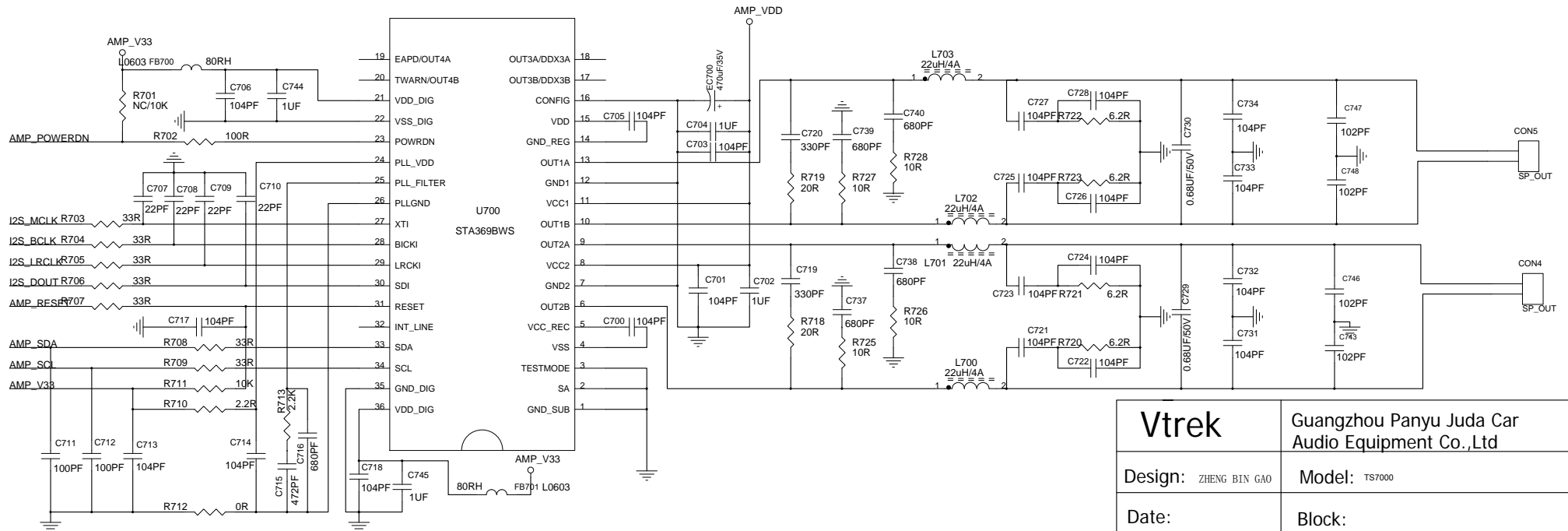
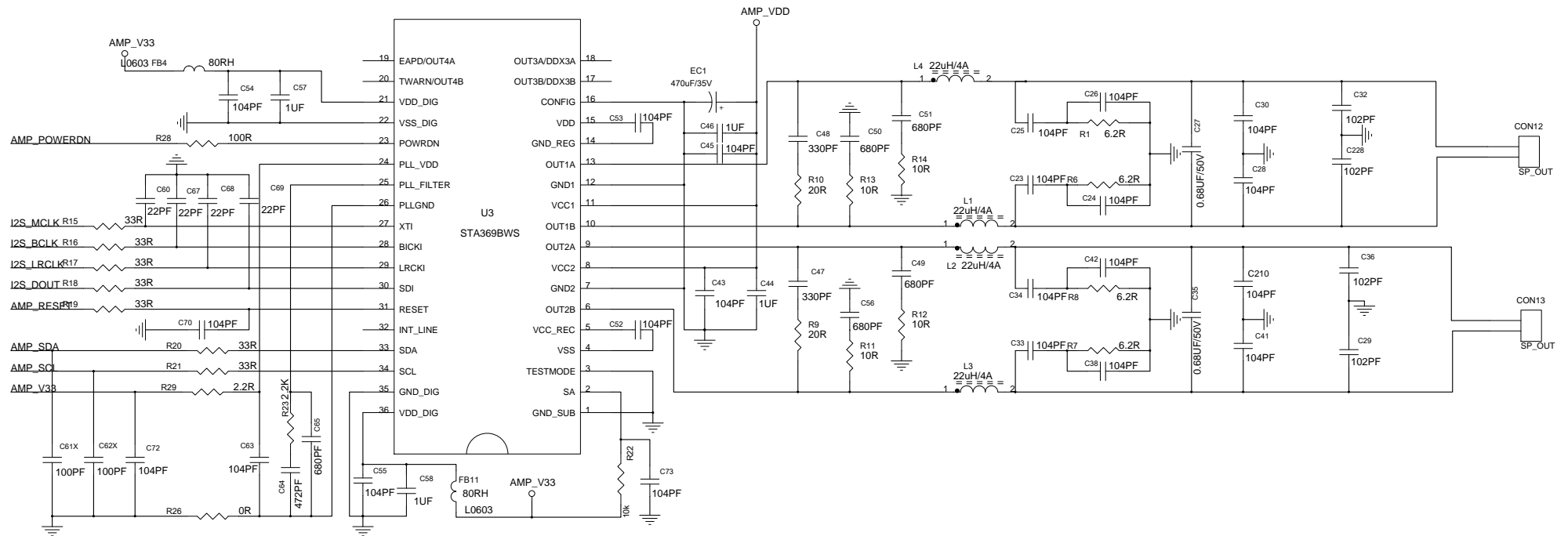
<b>Vtrek</b>	Guangzhou Panyu Juda Car Audio Equipment Co.,Ltd
Design: ZHENG BIN GAO	Model: ts7000
Date:	Block:
Rev: V0	Sheet:



<b>Vtrek</b>	Guangzhou Panyu Juda Car Audio Equipment Co.,Ltd
Design: ZHENG BIN GAO	Model: TS7000
Date:	Block:
Rev: V0	Sheet:



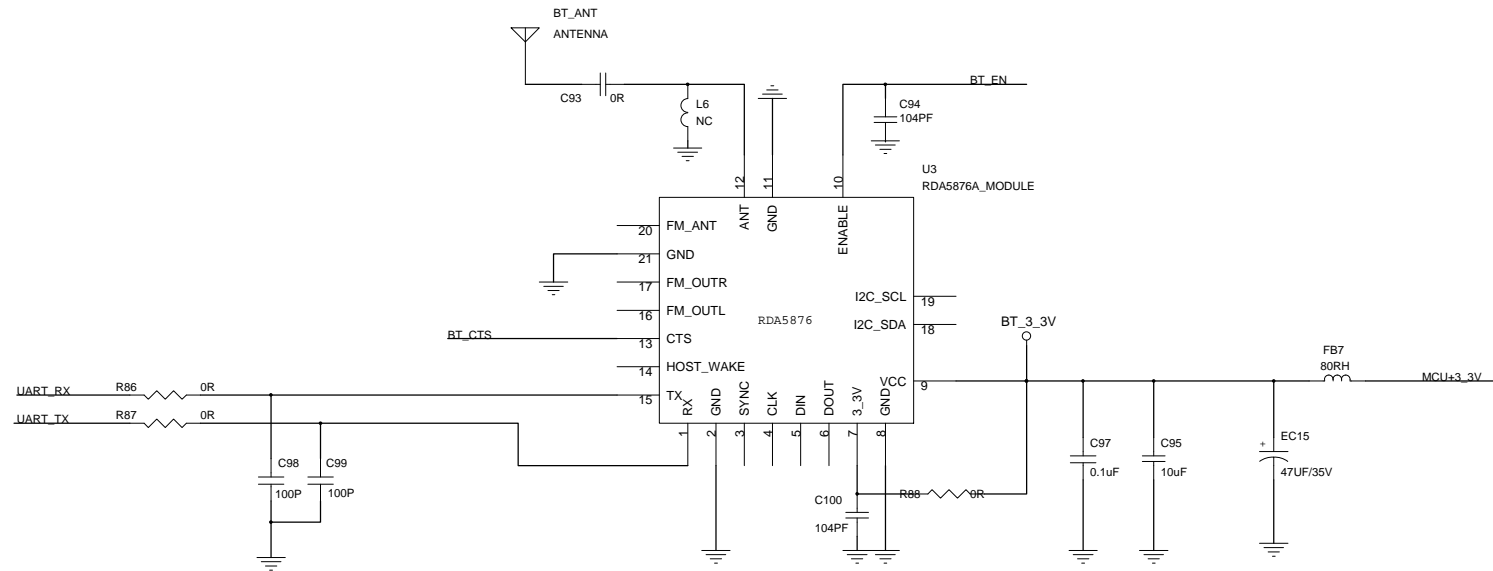
<b>Vtrek</b>	Guangzhou Panyu Juda Car Audio Equipment Co.,Ltd
Design: ZHENG BIN GAO	Model: TS7000
Date:	Block:
Rev: V0	Sheet:



<b>Vtrek</b>		Guangzhou Panyu Juda Car Audio Equipment Co.,Ltd	
Design:	ZHENG BIN GAO	Model:	TS7000
Date:		Block:	
Rev:	V0	Sheet:	



# Bluetooth Module



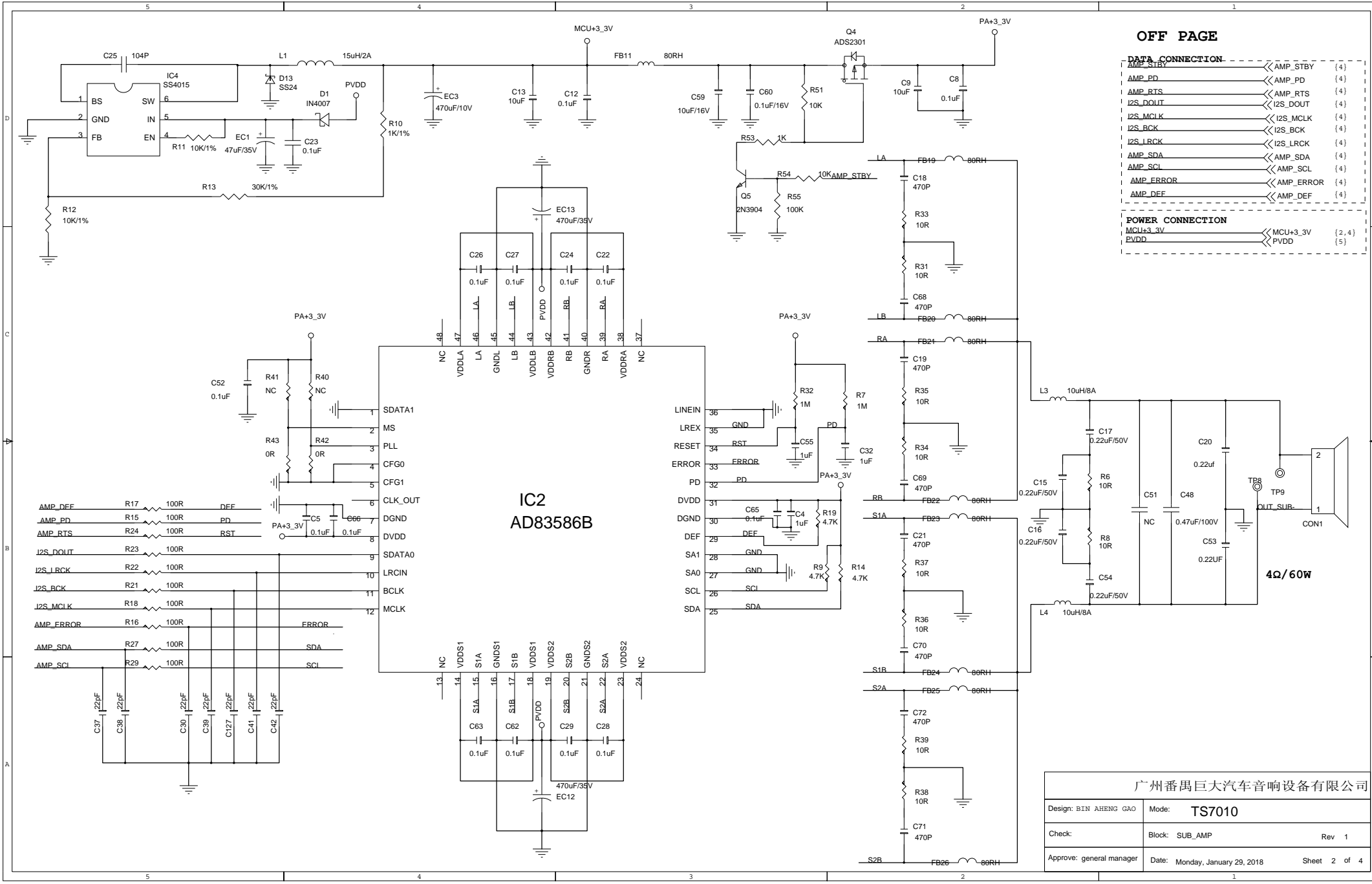
DATA CONNECTION		
UART_TX	↔	UART_TX {4}
UART_RX	↔	UART_RX {4}
BT_EN	↔	BT_EN {4}
BT_CTS	↔	BT_CTS {4}

POWER CONNECTION		
MCU+3.3V	↔	MCU+3.3V {3,4}

广州番禺巨大汽车音响设备有限公司

Design: BIN SHENG GAO	Mode: TS7010
Check:	Block: SUB_BLUETOOTH Rev 1
Approve:	Date: Monday, January 29, 2018 Sheet 1 of 4



**OFF PAGE**

**DATA CONNECTION**

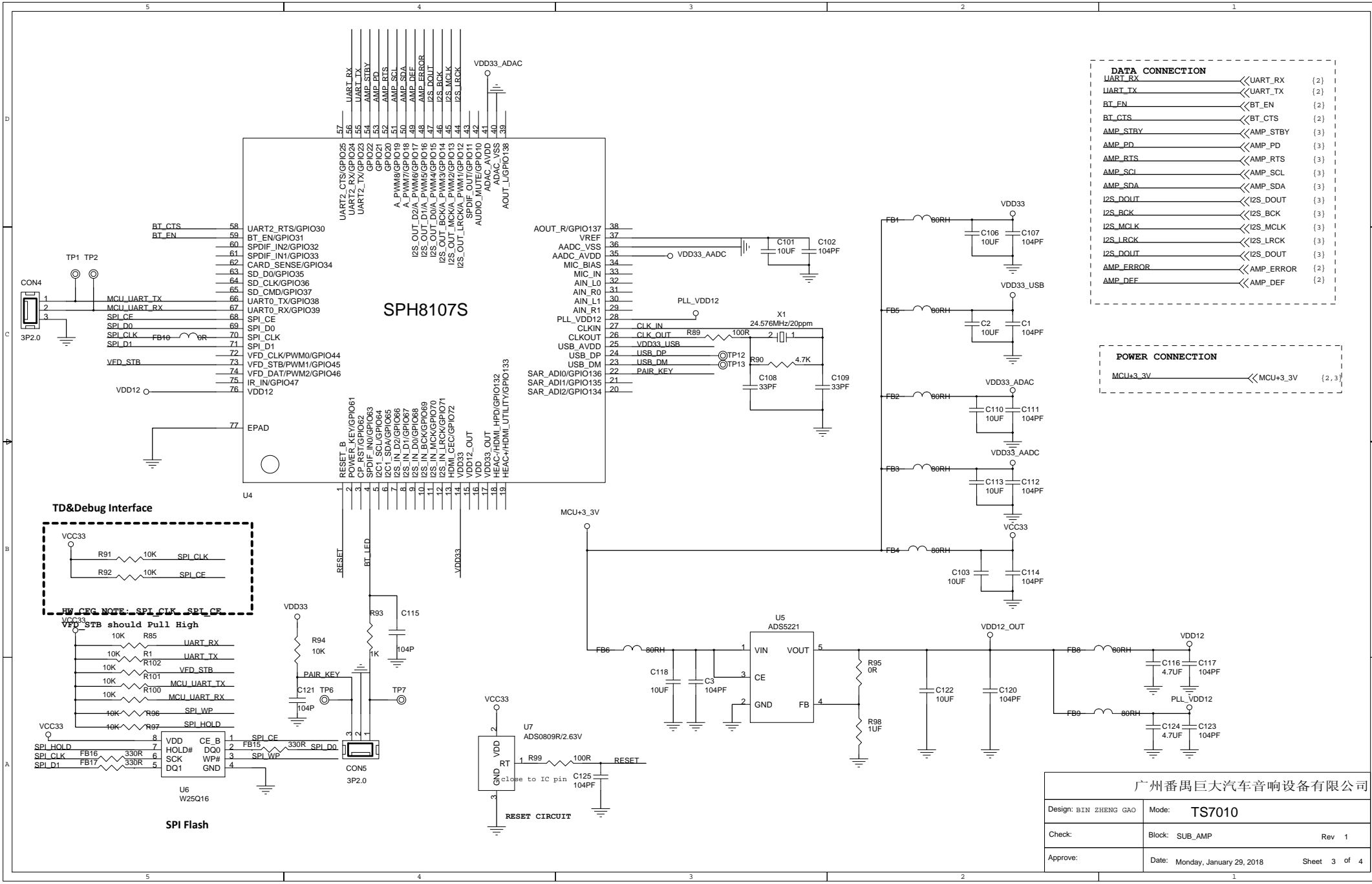
AMP_STBY	AMP_STBY	(4)
AMP_PD	AMP_PD	(4)
AMP_RTS	AMP_RTS	(4)
I2S_DOUT	I2S_DOUT	(4)
I2S_MCLK	I2S_MCLK	(4)
I2S_BCK	I2S_BCK	(4)
I2S_LRCK	I2S_LRCK	(4)
AMP_SDA	AMP_SDA	(4)
AMP_SCL	AMP_SCL	(4)
AMP_ERROR	AMP_ERROR	(4)
AMP_DEF	AMP_DEF	(4)

**POWER CONNECTION**

MCU+3_3V	MCU+3_3V	(2, 4)
PVDD	PVDD	(5)

广州番禺巨大汽车音响设备有限公司

Design: BIN AHENG GAO	Mode: TS7010
Check:	Block: SUB_AMP Rev 1
Approve: general manager	Date: Monday, January 29, 2018 Sheet 2 of 4



**DATA CONNECTION**

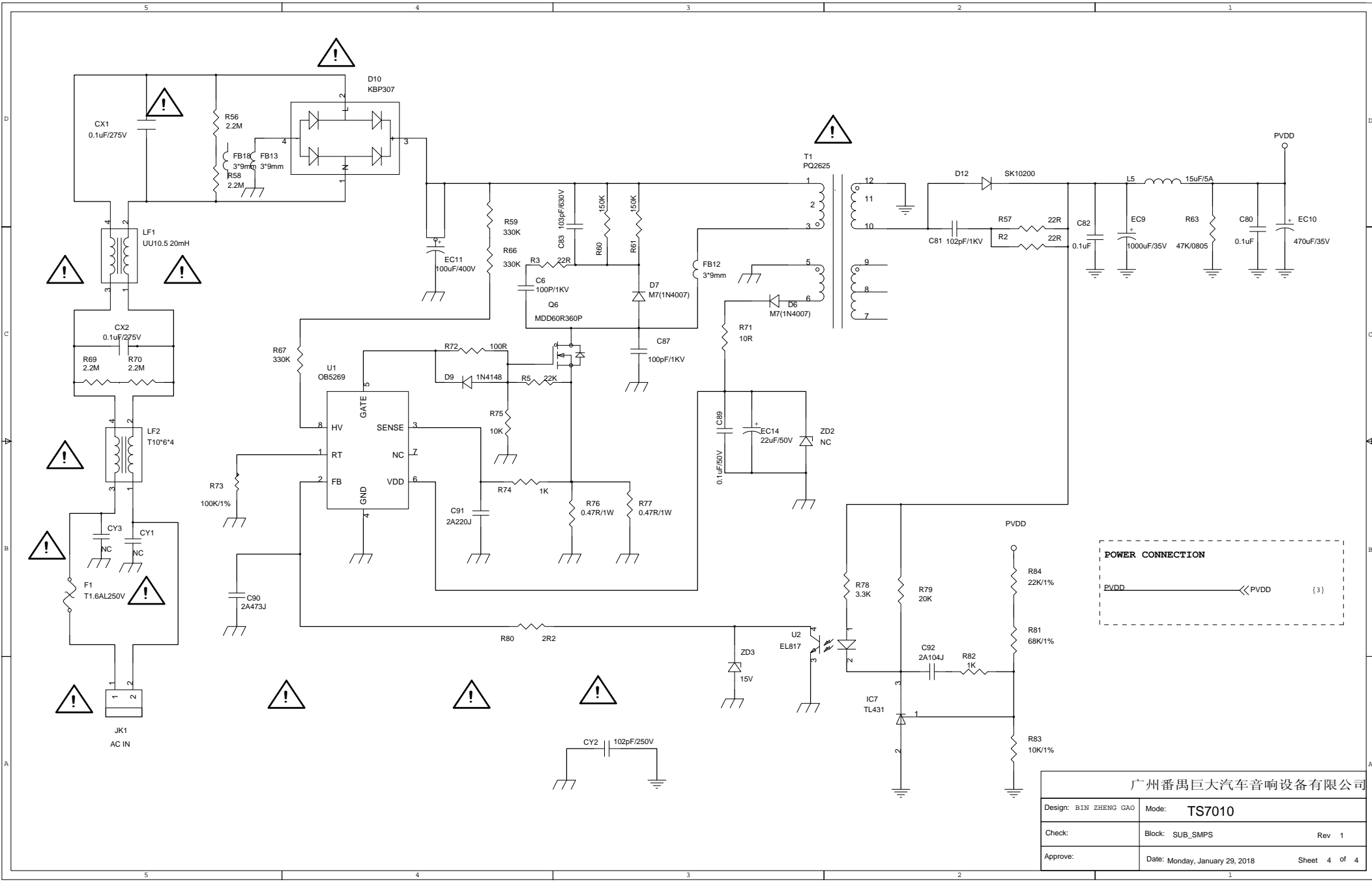
UART_RX	UART_RX	(2)
UART_TX	UART_TX	(2)
BT_EN	BT_EN	(2)
BT_CTS	BT_CTS	(2)
AMP_STBY	AMP_STBY	(3)
AMP_PD	AMP_PD	(3)
AMP_RTS	AMP_RTS	(3)
AMP_SDA	AMP_SDA	(3)
I2S_DOUT	I2S_DOUT	(3)
I2S_BCK	I2S_BCK	(3)
I2S_MCLK	I2S_MCLK	(3)
I2S_LRCK	I2S_LRCK	(3)
I2S_DOUT	I2S_DOUT	(3)
AMP_ERROR	AMP_ERROR	(2)
AMP_DEF	AMP_DEF	(2)

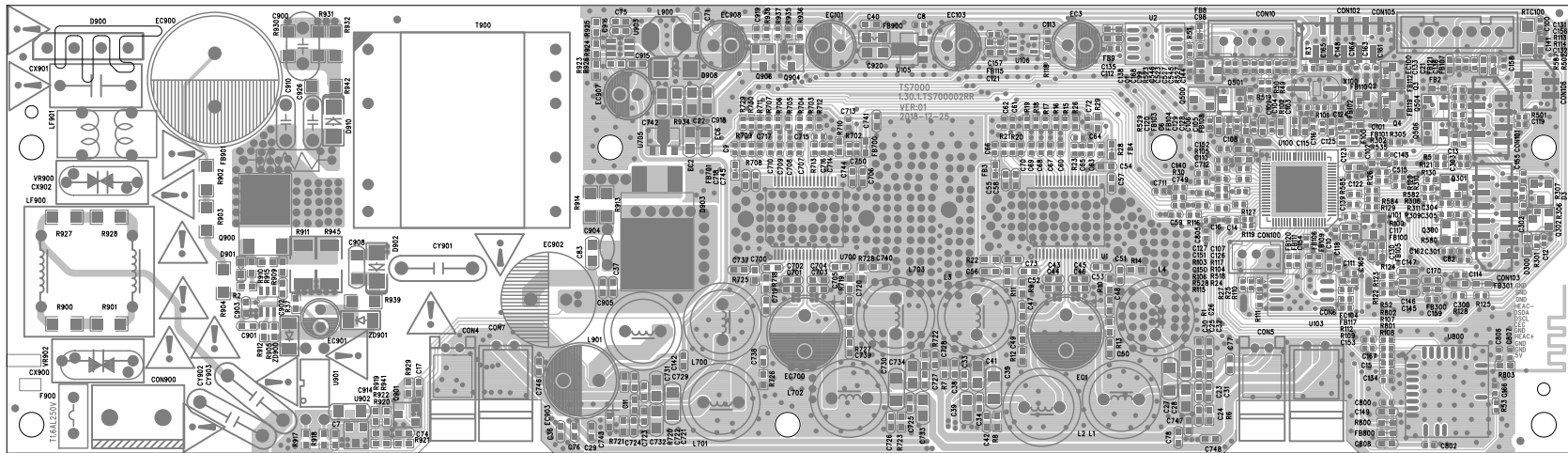
**POWER CONNECTION**

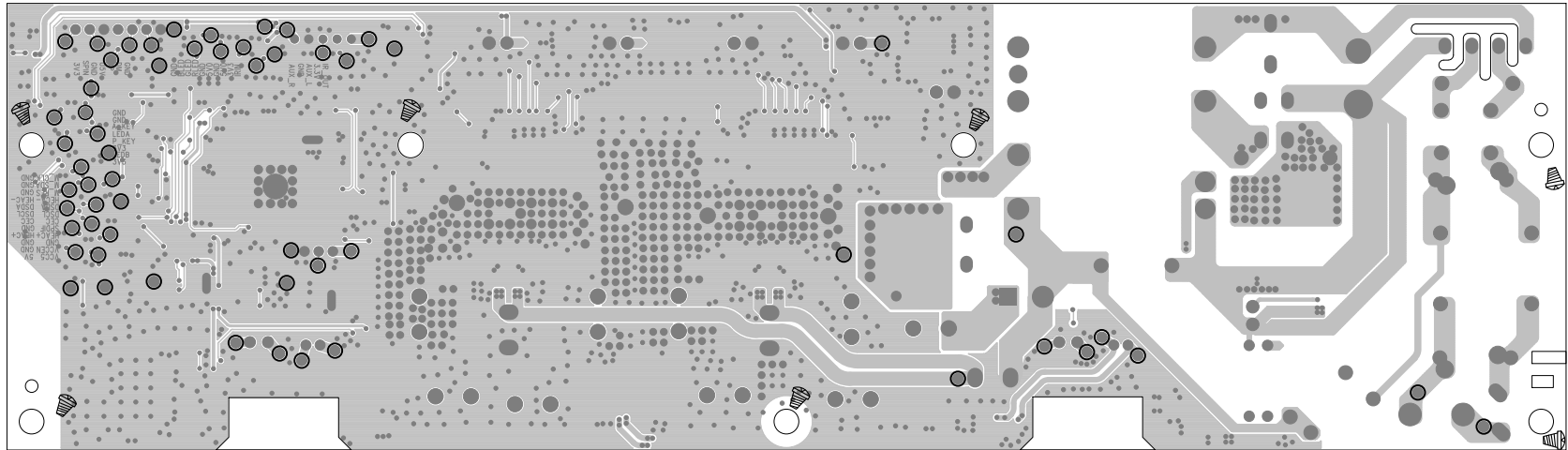
MCU+3.3V	MCU+3.3V	(2, 3)
----------	----------	--------

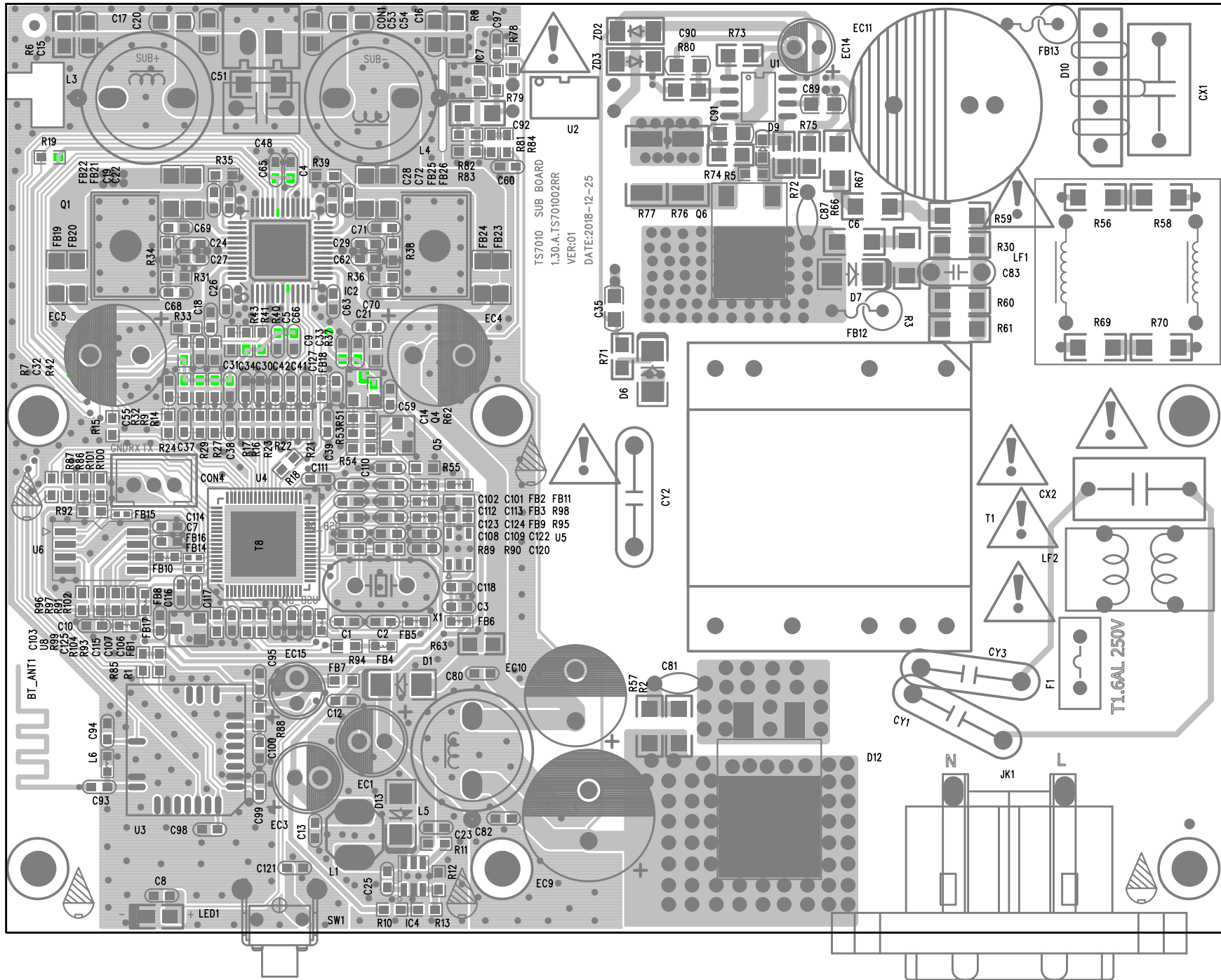
广州番禺巨大汽车音响设备有限公司

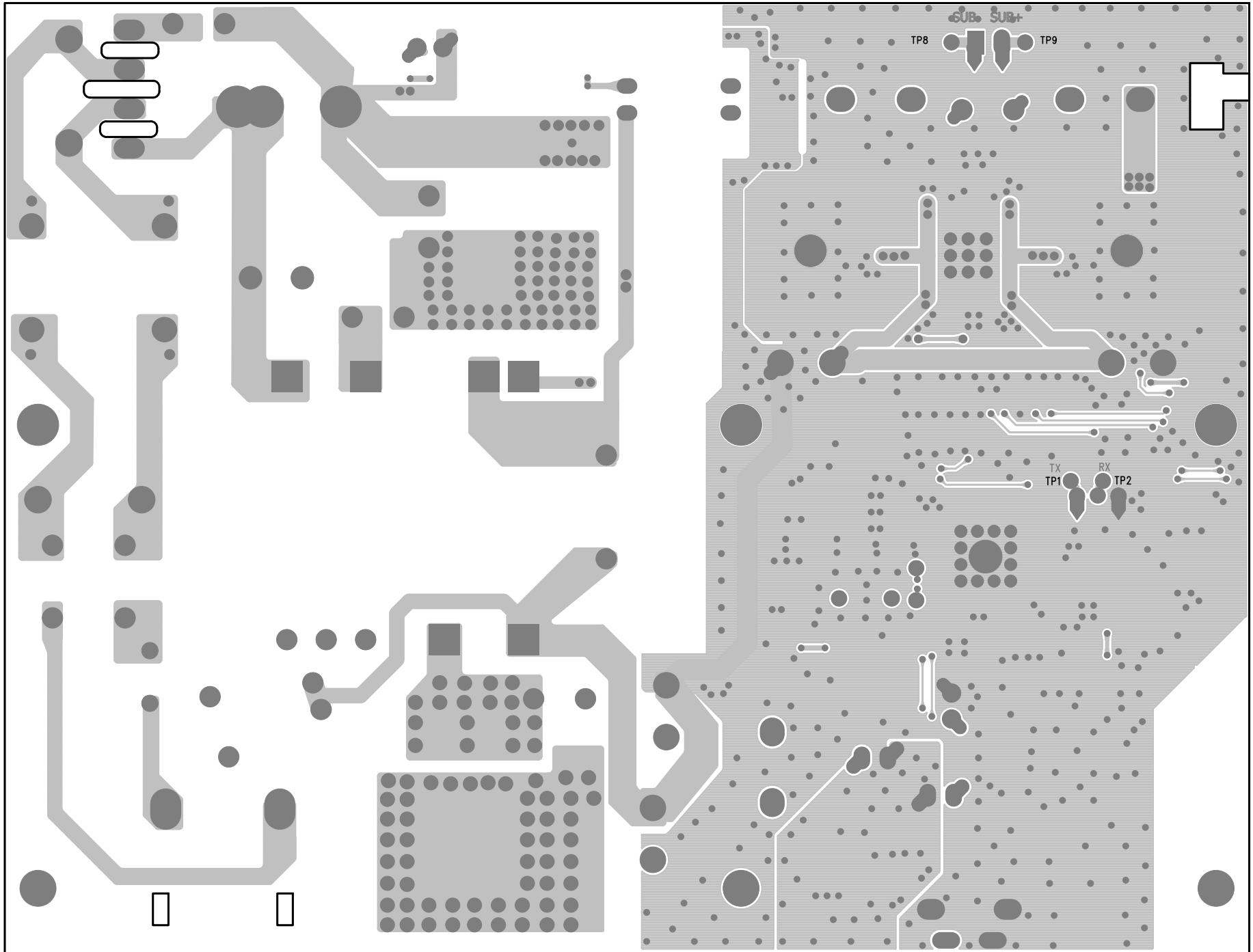
Design: B1N ZHENG GAO	Mode: TS7010
Check:	Block: SUB_AMP Rev 1
Approve:	Date: Monday, January 29, 2018 Sheet 3 of 4



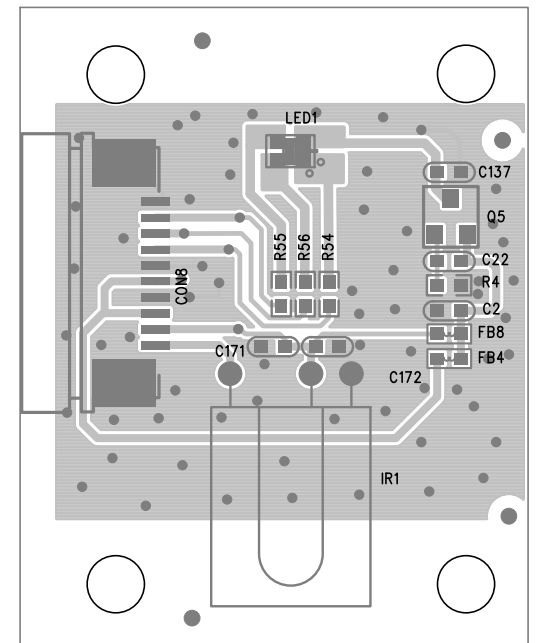
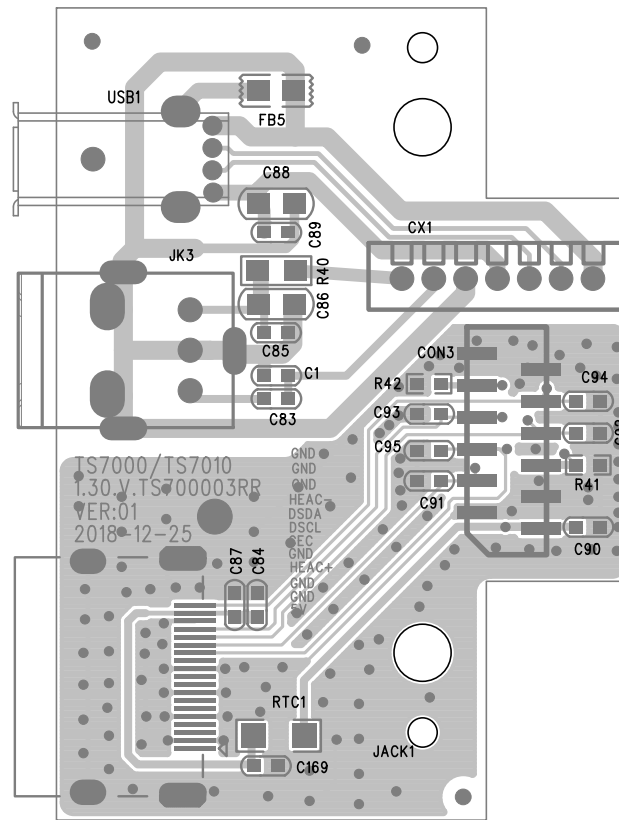
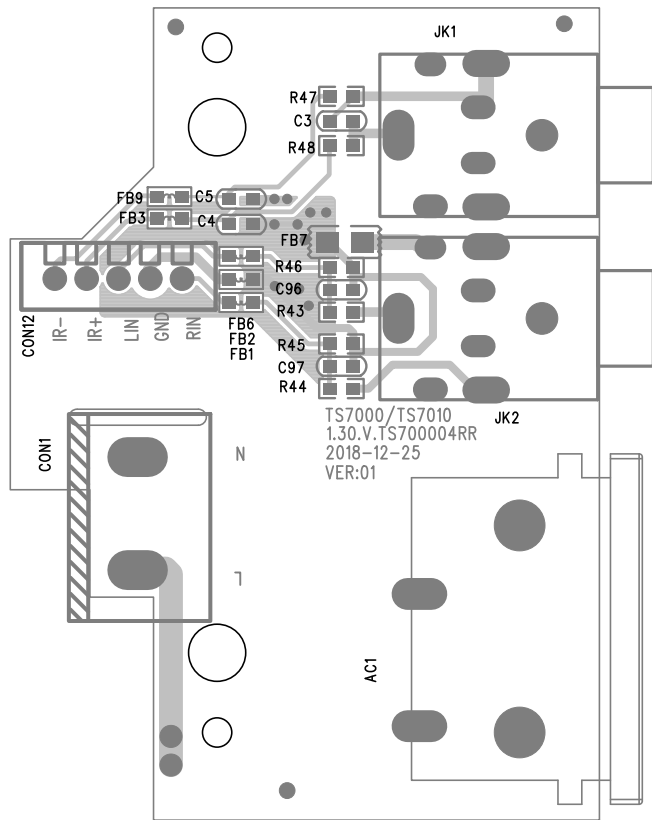


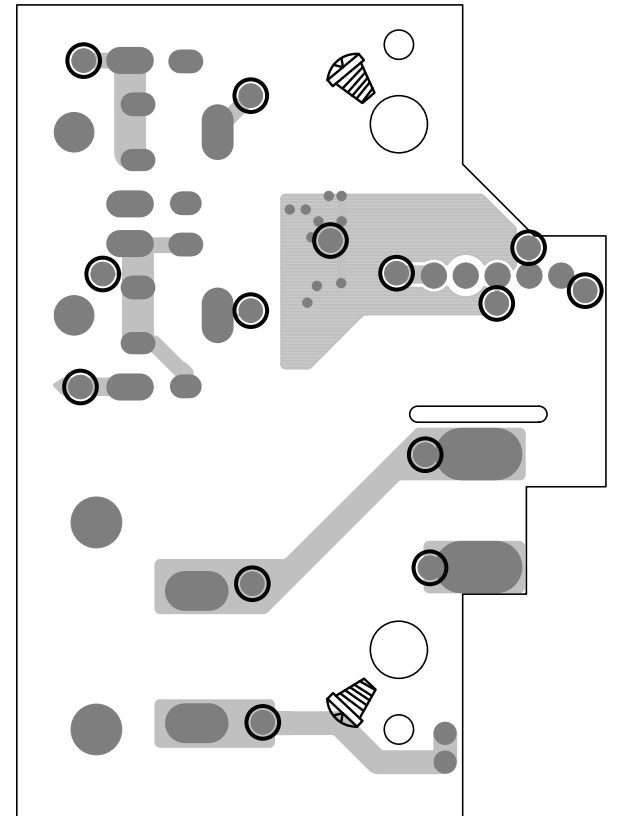
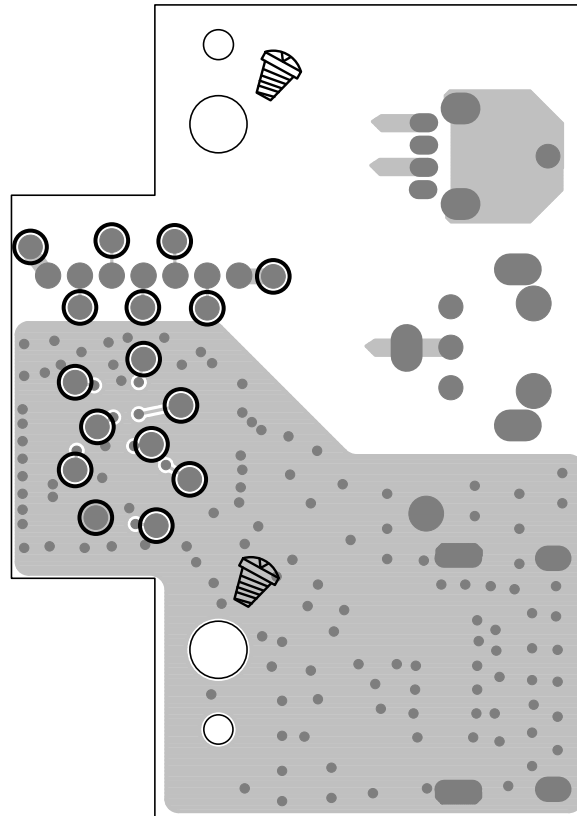
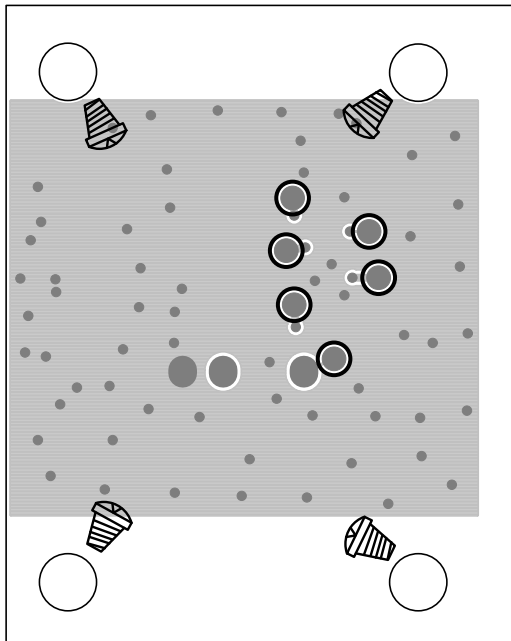


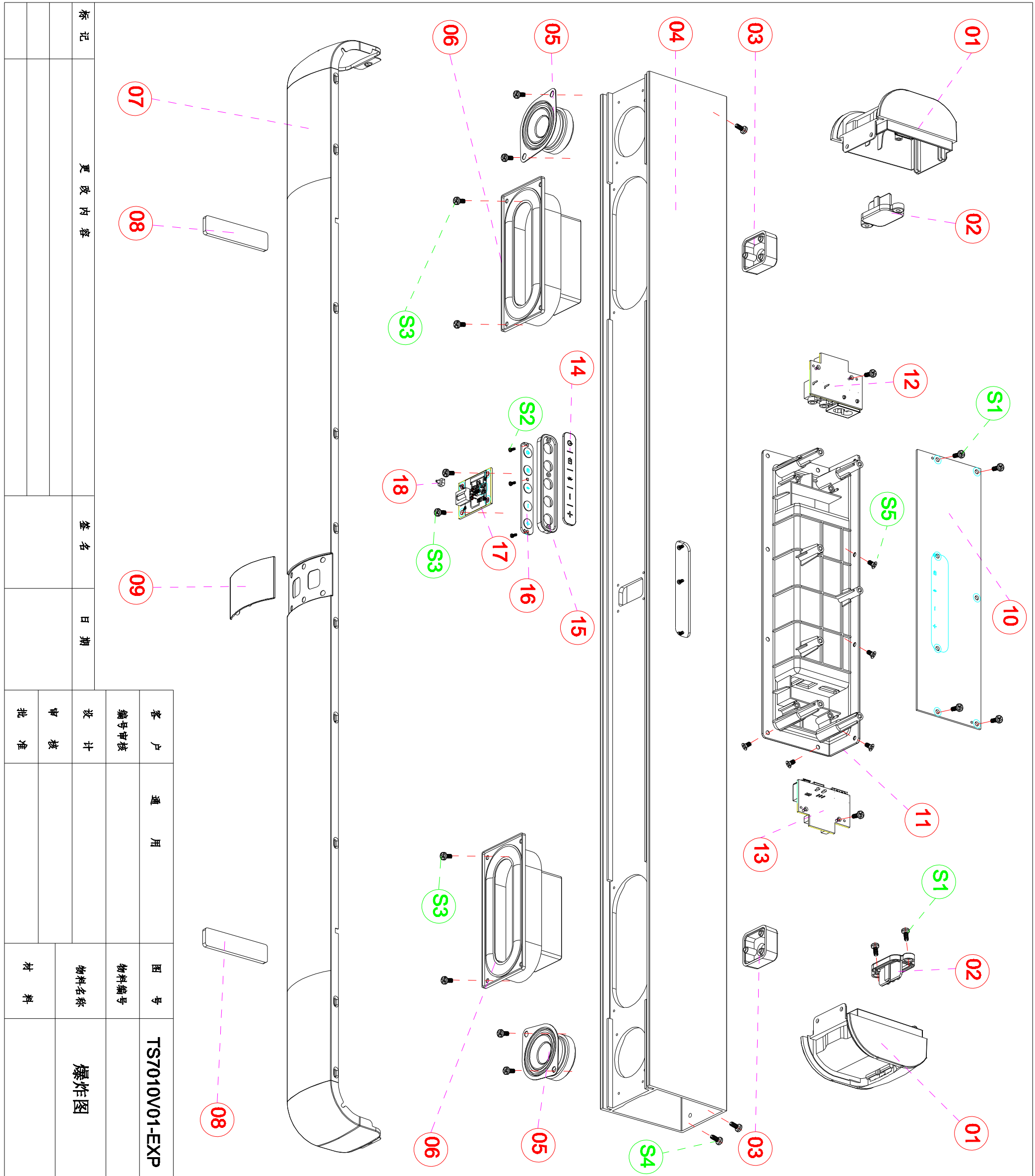












螺丝钉

S1	PT3×10BBHBNi+	15
S2	PT2×4PBHNI+	3
S3	3×8TBHBZN-R	4
S4	3×8BAHBDKL	26
S5	3×10FAHBNi	10

22		
21		
20		
19		
18	透光块	1
17	遥控板	1
16	按键板	1
15	按键支架	1
14	硅胶按键	1
13	USB板组件	1
12	AC板组件	1
11	后盖	1
10	解码板	1
9	遥控镜片	1
8	硅胶垫	2
7	铁网	1
6	低音喇叭	2
5	高音喇叭	2
4	主体拉管	1
3	壁挂支架	2
2	密封盖	2
1	侧盖	2

序号	名称	数量
----	----	----

客户	通用	图号	TS7010V01-EXP
编号审核		物料编号	

设计	物料名称	爆炸图
审核	材料	
批准		

内部机型	TS7010
汽车音响	<input type="checkbox"/>

比例	公差	视角
FRBB	X ±0.5 ±0.5°	
	X.X ±0.2	
	X.XX ±0.1	

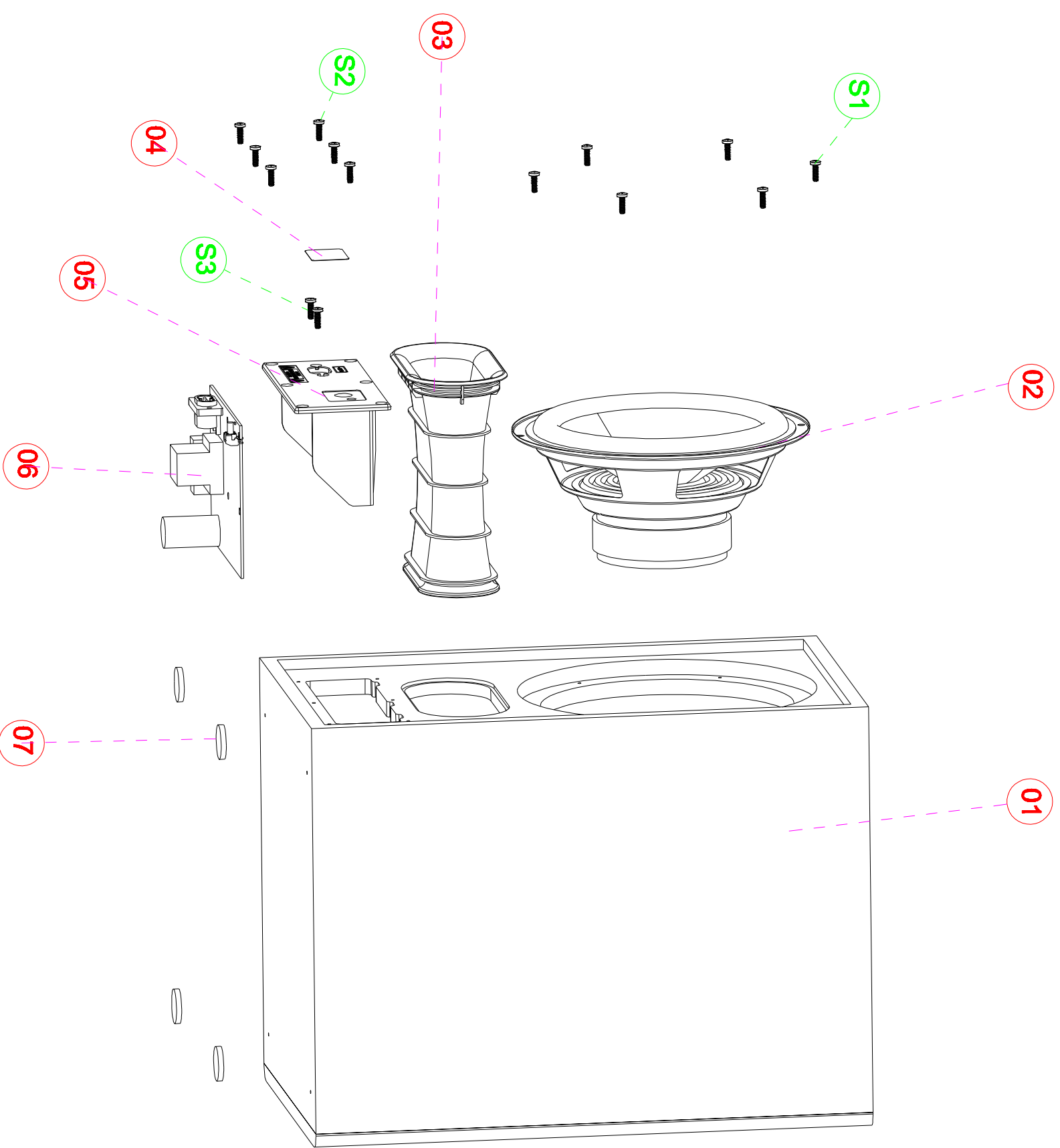
第 1 张	共 1 张	版本	A
-------	-------	----	---

标记	更改内容	签名	日期

螺丝钉

S1	3.5*16mm	6
S2	3*12BAHBDKL	6
S3	3*8BAHBDKL	8
S4		
S5		

22		
21		
20		
19		
18		
17		
16		
15		
14		
13		
12		
11		
10		
9		
8		
7	硅胶垫	4
6	功放板半成品	1
5	低音炮支架	1
4	按键PC片	1
3	导风管	1
2	喇叭	1
1	木箱	1



客户通用		图号		内部机型	
TS7010-MX-EXP		TS7010		TS7010	
物料名称		物料编号		汽车音响 <input type="checkbox"/>	
音箱爆炸图					
设计		审核		比例	
				公差	
				±0.5°	
				RREB	
				K.X ±0.5	
				K.X ±0.2	
				K.XX ±0.1	
批		准		第 1 张 共 1 张	
版本		A		视角	

标记	更改内容	签名	日期

