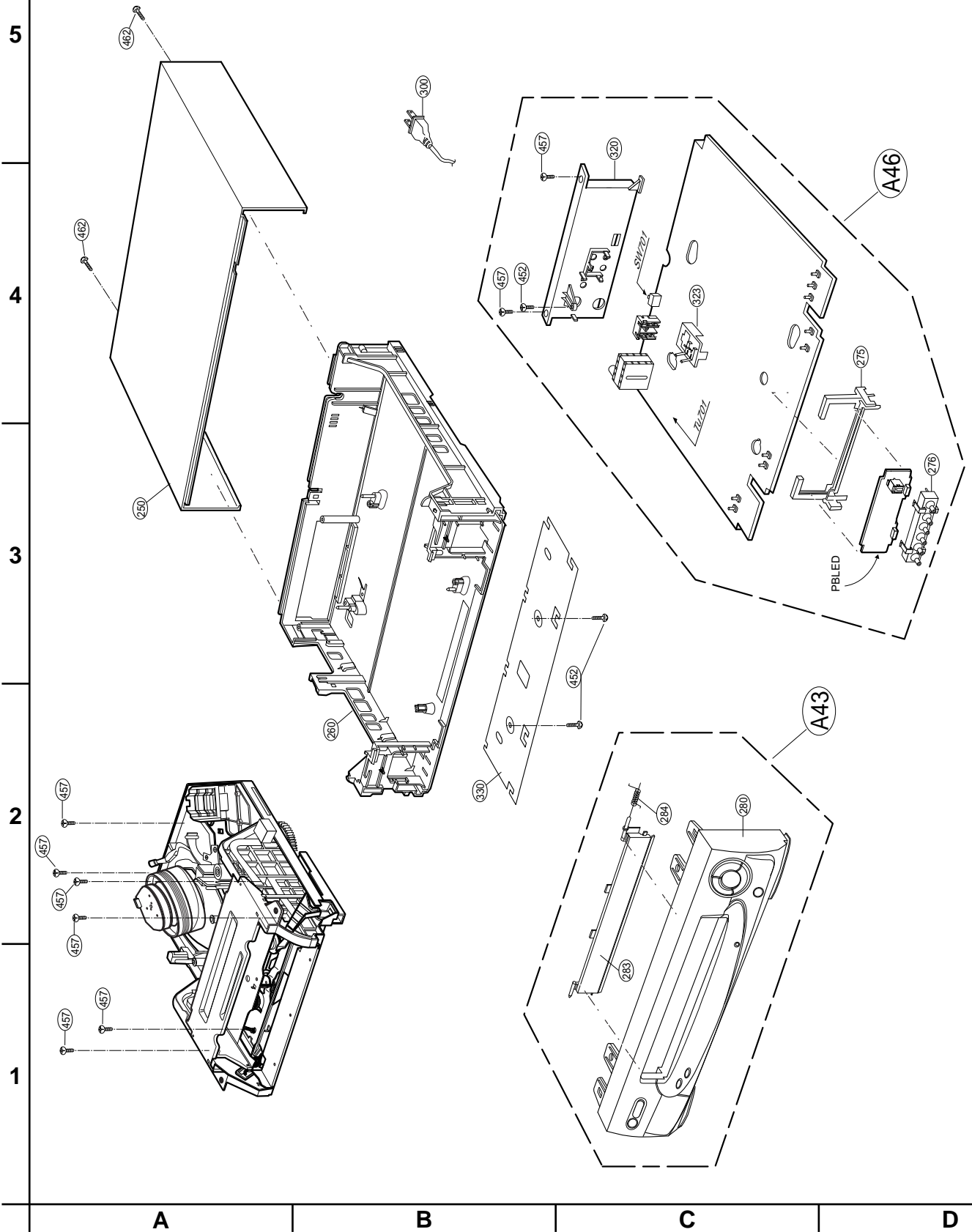


EXPLODED VIEWS

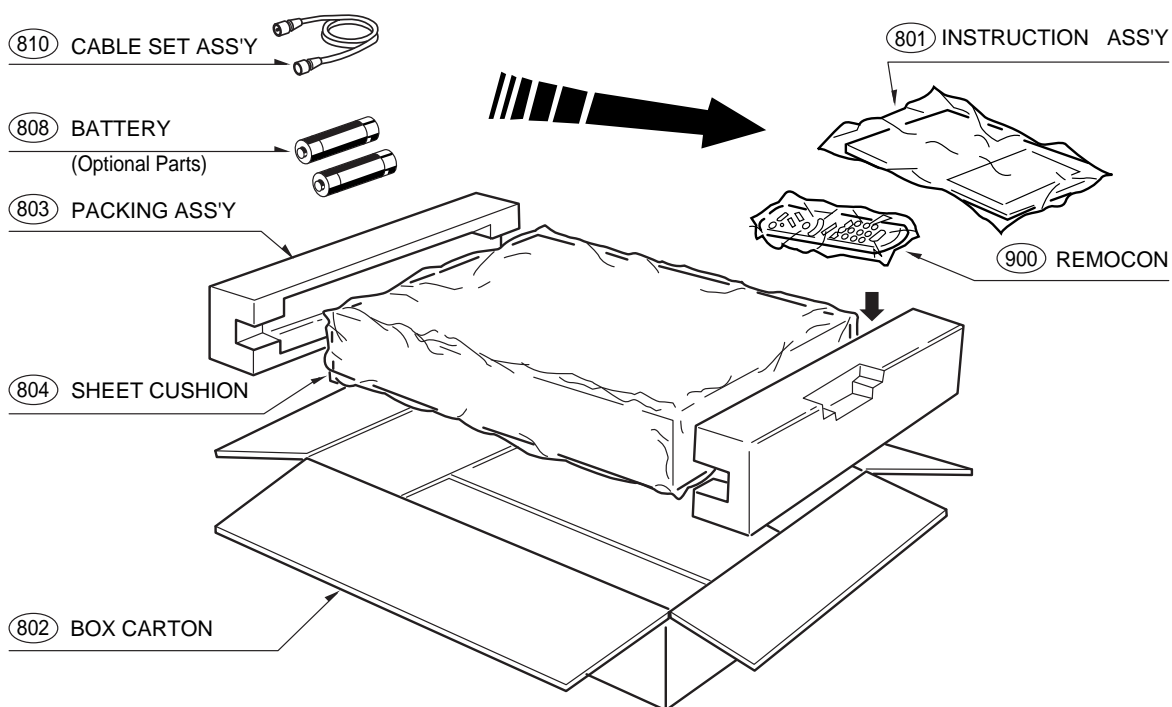
1. Cabinet and Main Frame Section



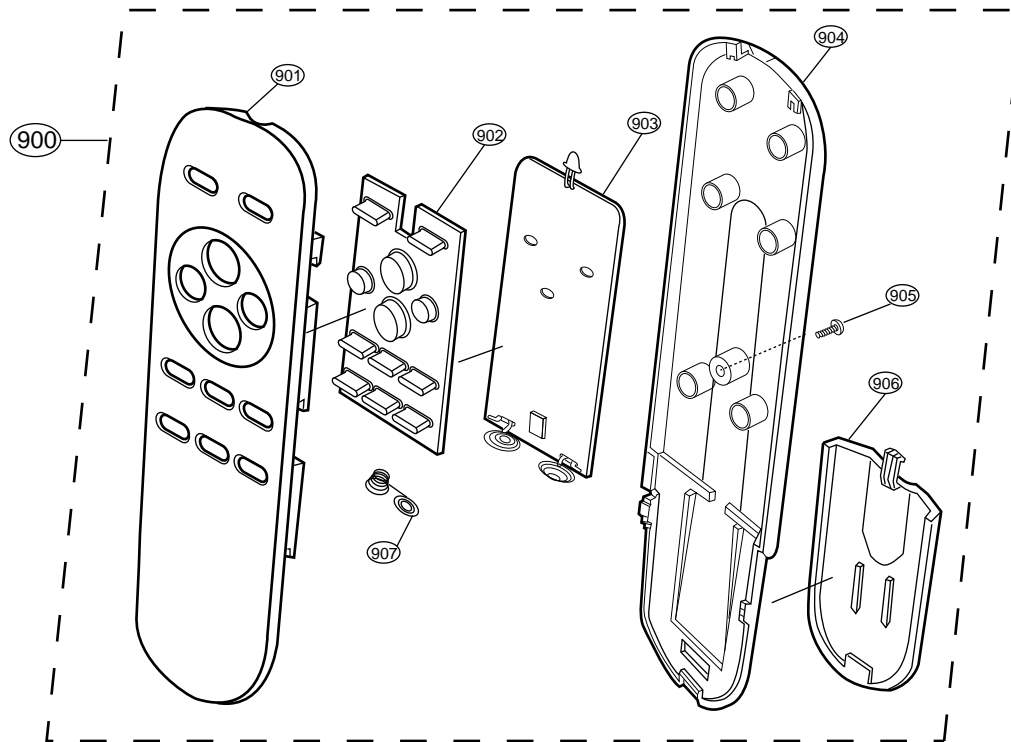
• Cabinet & Main Frame Section Parts List

2.Packing & Accessory Section

NOTE) Refer to "SECTION 5 REPLACEMENT PARTS LIST" in order to look for the part number of each part.



3.Remote Control Section



• Remote Control Section Parts List

• Packing Accessory Section Parts List