

Service Manual

Portable Stereo Component System

Radio Cassette
RX-CS780



Color

(K) Black Type

Country Code	Area	Color
(E)	Continental Europe	(K)
(EB)	Great Britain	
(EG)	F.R. Germany & Italy	

LRD MECHANISM SERIES

■ SPECIFICATIONS

General:

Power requirement: AC: (E) (EG)...230V, 50Hz
(EB)...230~240V, 50Hz
Battery; 15V (10 UM-1"R20/LR20" batteries)
DC IN; 13.2V (12~15V)

Power Consumption: 55W (AC only)

Power Output: 80W (30W x 2+10W x 2)...PMPO

Speaker: Woofer; 12cm PM Dynamic
Speaker(2.7Ω)
Tweeter; 8cm Ceramic Speaker (8Ω)

Jacks:

Input; CD/AUX; 316 mV, 47 kΩ
EXT. MIC; 2.5 mV (200 ~ 600Ω), Ø 3.5

Output; EXT. SP; 2.7 ~ 8Ω
HEADPHONE; 32Ω, Ø 3.5

Dimension (W x H x D):

610 x 255 x 202 mm
Main Unit; 281 x 255 x 202mm
Speaker Box; 170 x 254 x 187mm

Weight:

7.0 kg without batteries.

Radio Section:

Radio Frequency Range: FM; 87.5 ~ 108MHz
LW; 148.5 ~ 285kHz
MW; 520 ~ 1610kHz
SW; 5.9 ~ 18.0MHz

Intermediate Frequency:

FM; 10.7MHz
AM; 459 kHz
FM; 2.8 μV/50mW output
(-3 dB Limit Sens.)

Sensitivity:

LW; 160 μV/m/50mW output
MW; 110 μV/m/50mW output
SW; 10 μV/50mW output

Tape Deck Section:

Frequency Response; Normal; 50 ~ 14,000Hz
CrO2; 50 ~ 15,000Hz

Recording: AC bias

Recording:

Tape Speed:

4.8cm/s

Track System:

4 Track 2-channel stereo recording and playback.

Notes:

1. Weights and dimensions shown are approximate.
2. Design and specifications are subject to change without notice.

Panasonic

SCHEMATIC DIAGRAM

1 2 3 4 5

A

A MAIN CIRCUIT

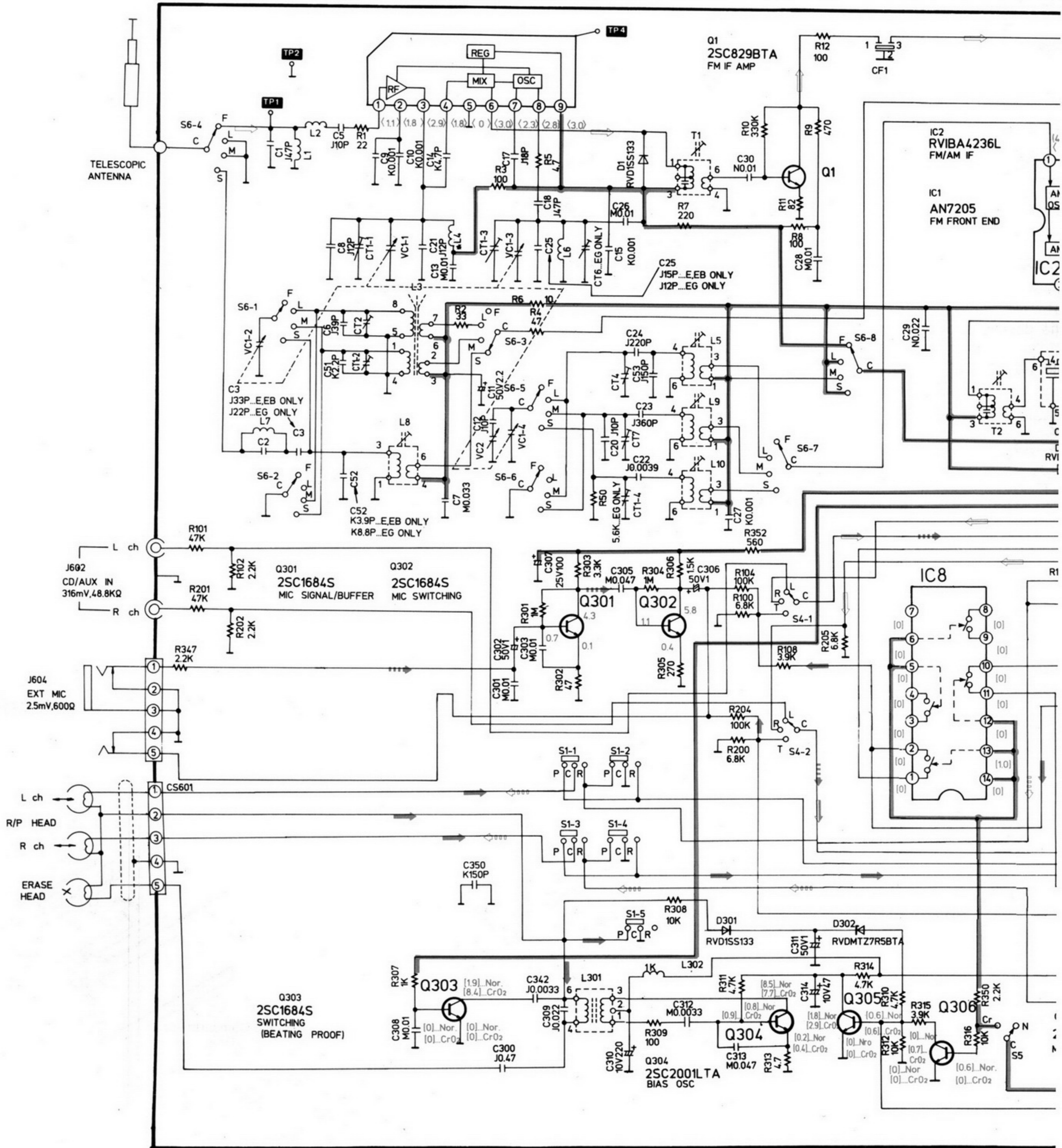
B

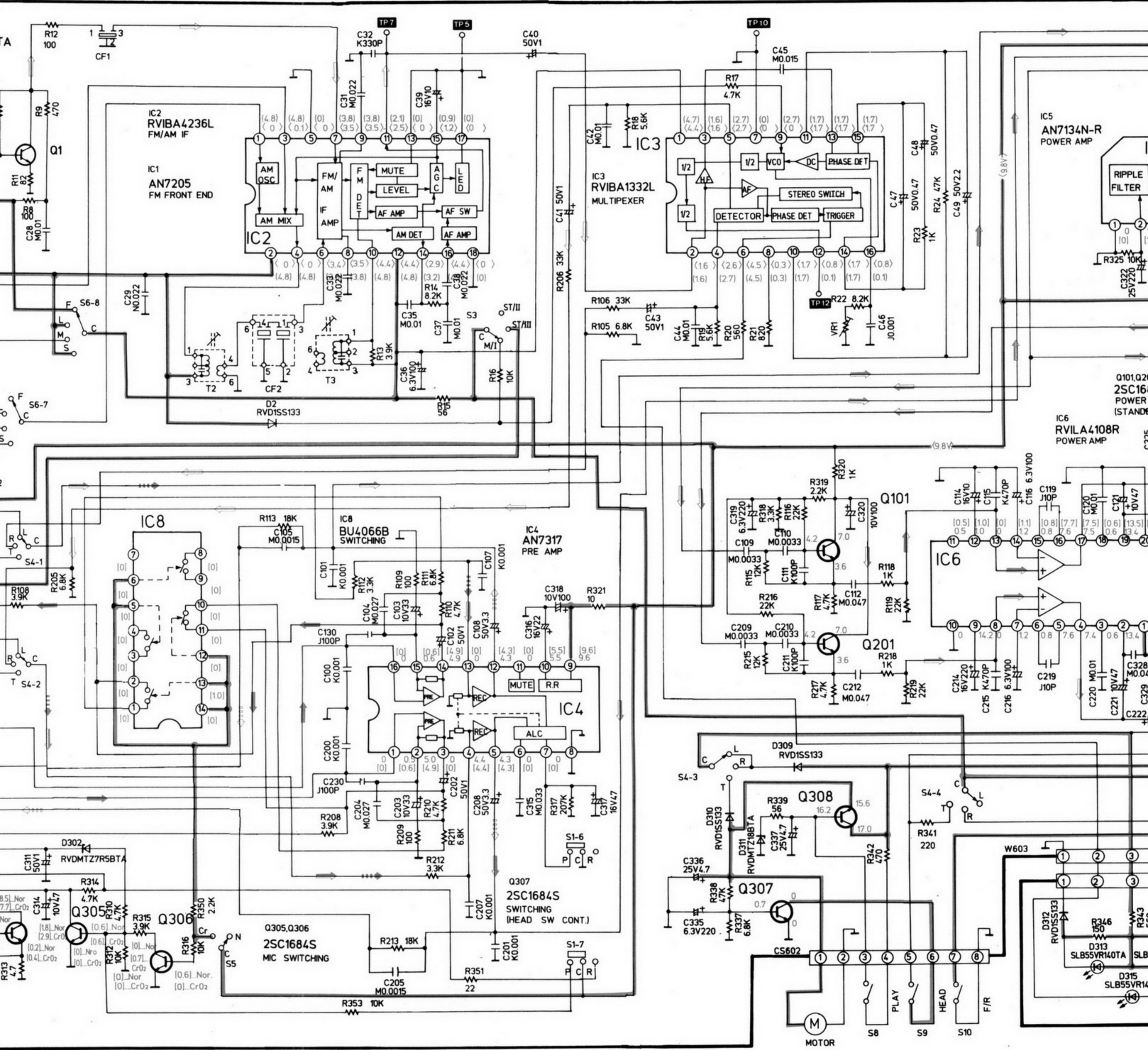
C

D

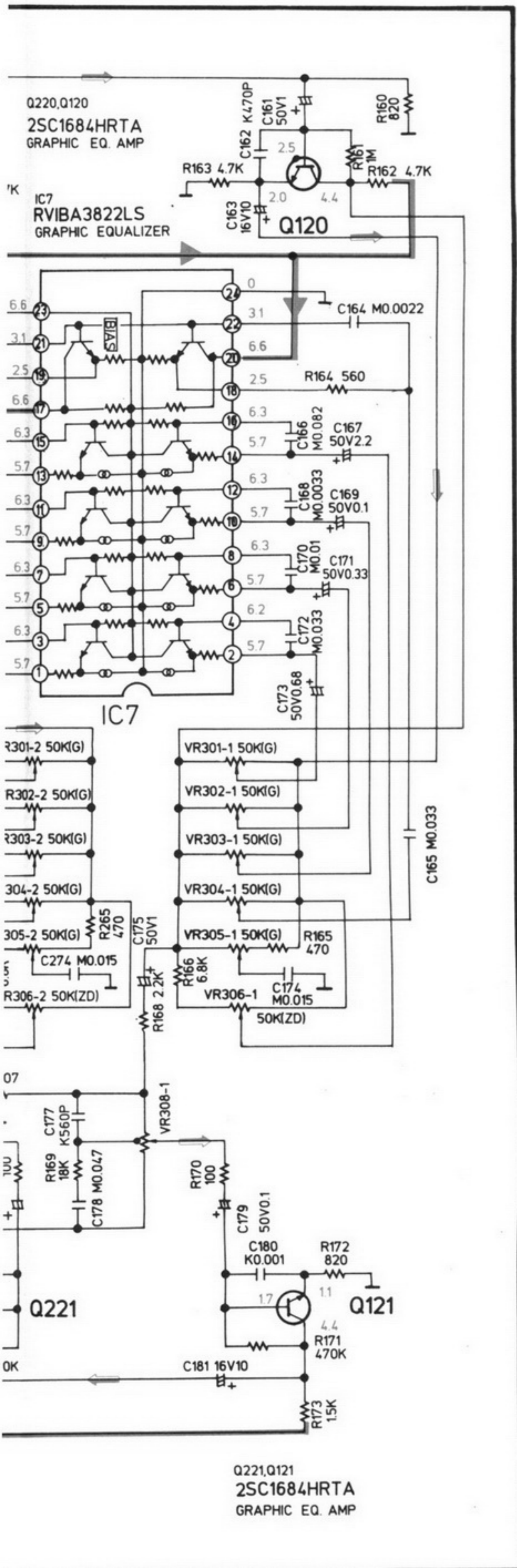
E

F





R CIRCUIT



NOTES:

1. S1-1 ~ S1-7: Record/Playback select switch in "PLAYBACK" position. (P... PLAYBACK, R... RECORD)
2. S3: FM mode/Beat proof switch in "MONO/I" position. (M/I... MONO/I, S/II... STEREO/II, S/III... STEREO/III).
3. S4-1 S4-4: Function select switch in "CD/AUX" position. (L... CD /AUX, R... RADIO, T... TAPE/ OFF).
4. S5: Tape select switch in "NORMAL" position. (N... NORMAL, Cr... CrO2).
5. S6-1 S6-8: Band select switch in "FM" position. (F... FM, L... LW, M... MW, W... SW).
6. S7: AC/DC select switch in "DC" position.
7. S8: Play switch in "OFF" position.
8. S9: Head switch in "OFF" position.
9. S10: FWD/REV switch in "OFF" position.
10. VR1: FM MPX adjustment VR.
11. VR301-1 VR301-2: Graphic E.Q. (100 Hz) control VR.
12. VR302-1 VR302-2: Graphic E.Q. (330 Hz) control VR.
13. VR303-1 VR303-2: Graphic E.Q. (1 kHz) control VR.
14. VR304-1 VR304-2: Graphic E.Q. (3.3 kHz) control VR.
15. VR305-1 VR305-2: Graphic E.Q. (10 Hz) control VR.
16. VR306-1 VR306-2: XBS level control VR.
17. VR307: Balance control VR.
18. VR308-1 VR308-2: Volume control VR.
19. DC voltage measurements are taken with electronic voltmeter. The negative terminal of the battery provides negative meter connection point.
No mark... PLAYBACK, []... RECORD, ()...AM, < >...FM
20. Battery current: Vol. min.....130mA (Radio)
200mA (Tape Playback)
Vol. max.....470mA (Radio)
680mA (Tape Playback)
260mA (Recording)
(Measurement Instruction)
Radio: FM 60dB, 30% Mod.
Tape: 315 Hz, OdB
21. Important Safety Notice: Components identified by \triangle mark have special characteristics important for safety. When replacing any of these components, use only manufacturer's specified parts.
22. The mark (\blacksquare) shows test point eg: **TPI** test point 1.
• This schematic diagram may be modified at any time with the development of new technology.

