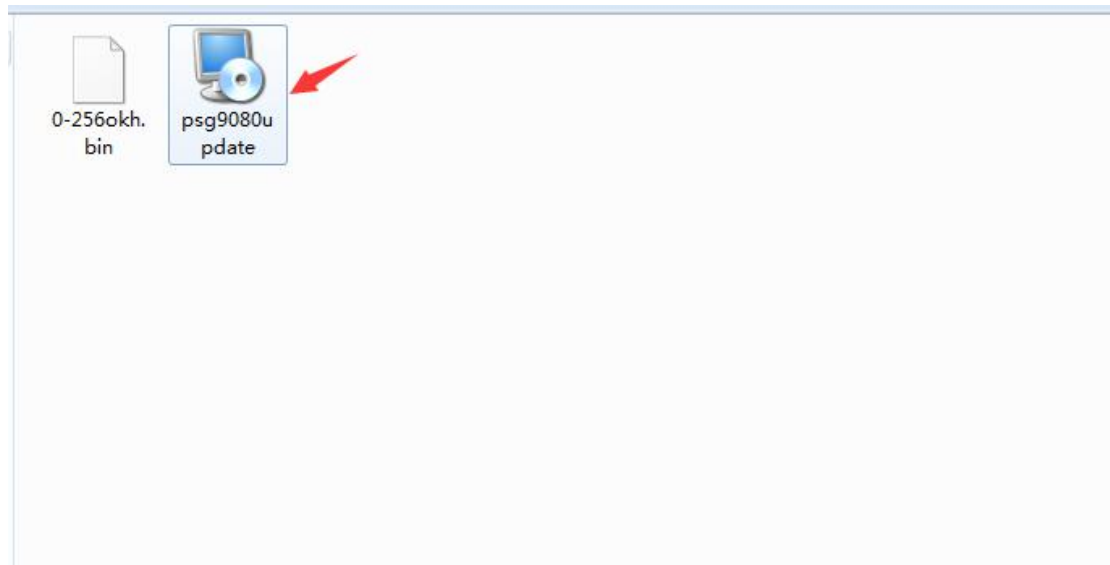
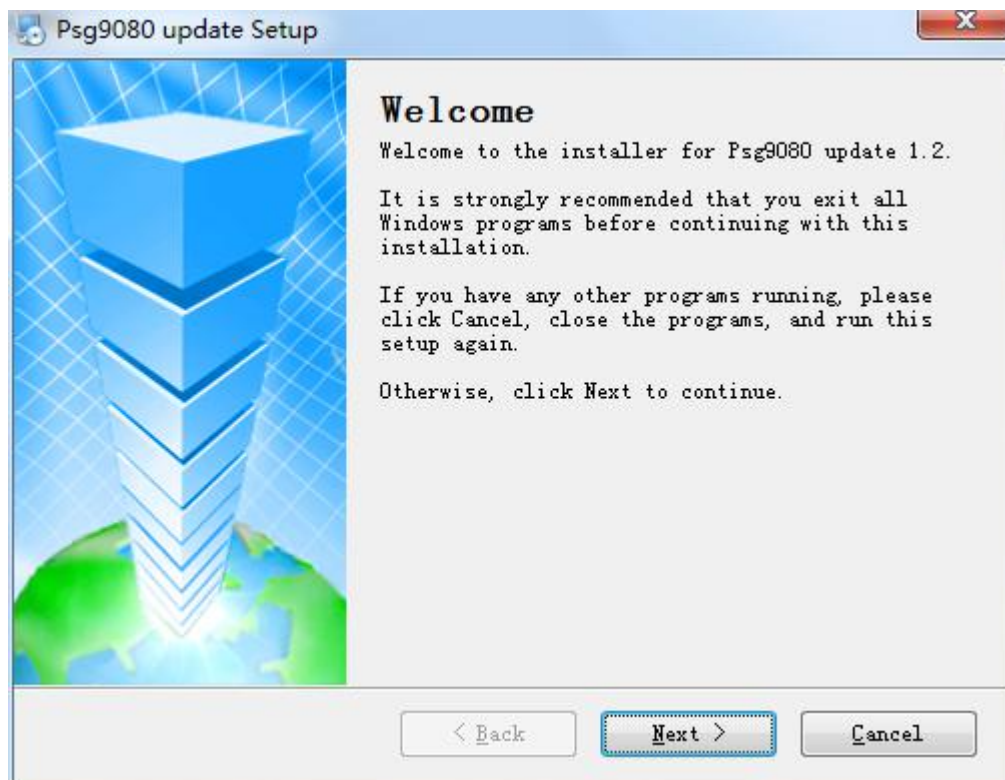


1、首先准备一台 windows7 系统以上的电脑，用 USB 线连接电脑和 PSG9080，给 PSG9080 通电并开机；

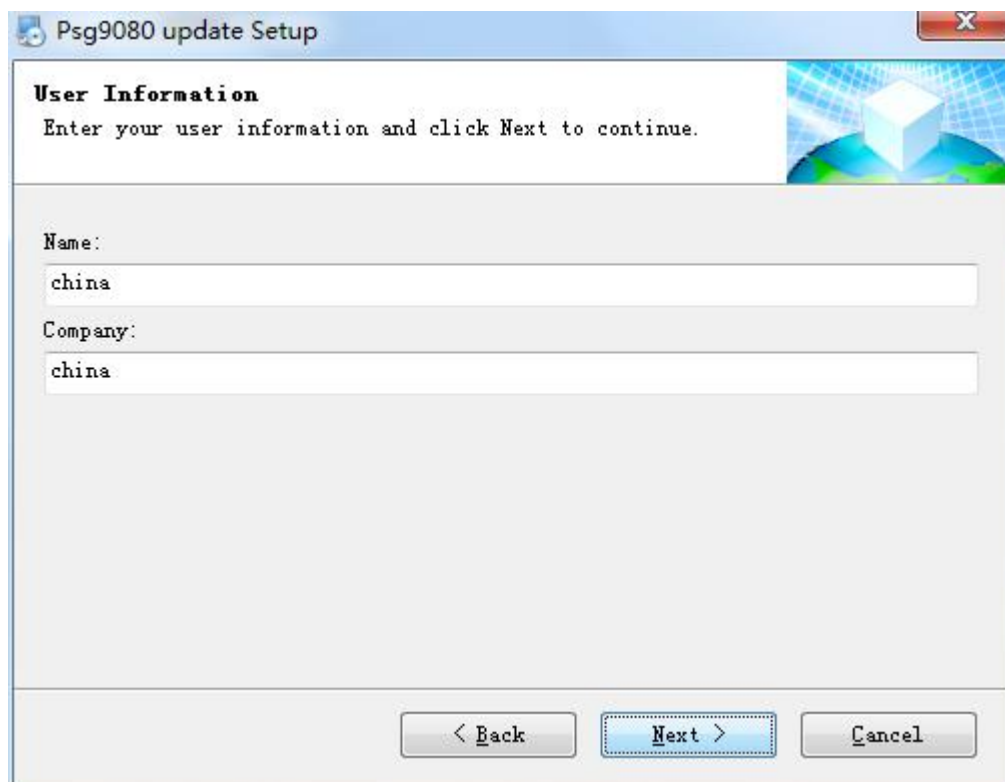
2、打开升级包；



3、点击下一步；



4、点击下一步；



The screenshot shows the 'User Information' step of the 'Psg9080 update Setup' window. The window has a title bar with the text 'Psg9080 update Setup' and a close button. The main area is titled 'User Information' and contains the instruction 'Enter your user information and click Next to continue.' Below this, there are two text input fields: 'Name:' with the value 'china' and 'Company:' with the value 'china'. At the bottom, there are three buttons: '< Back', 'Next >' (which is highlighted with a dashed border), and 'Cancel'.

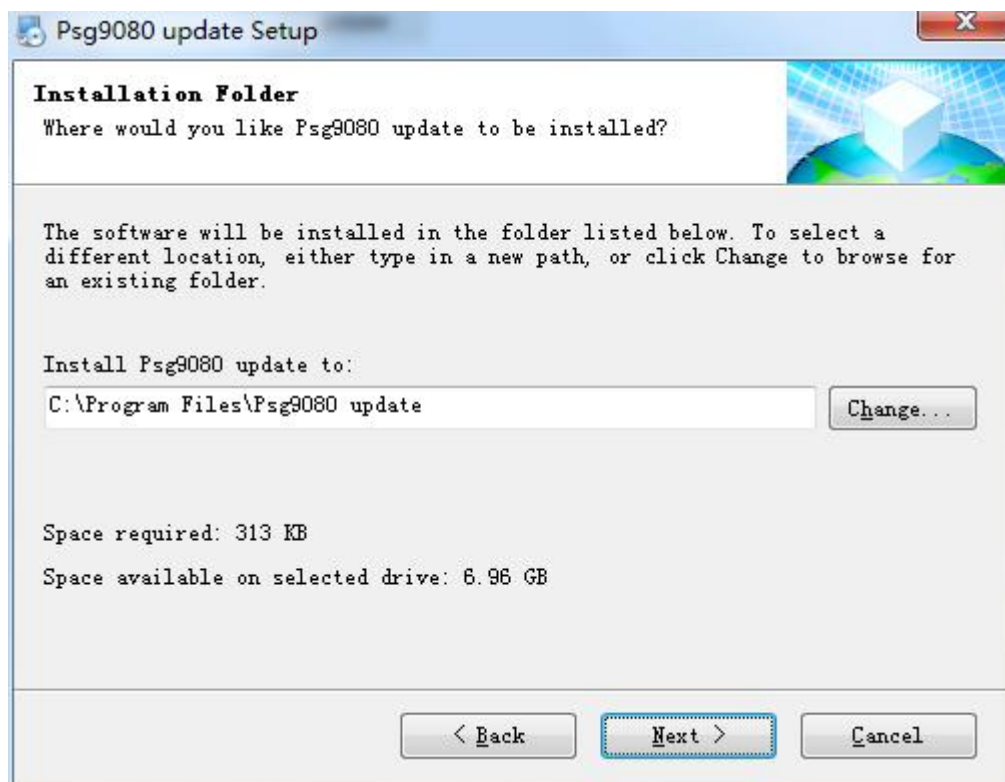
User Information
Enter your user information and click Next to continue.

Name:
china

Company:
china

< Back Next > Cancel

5、点击下一步；



The screenshot shows the 'Installation Folder' step of the 'Psg9080 update Setup' window. The window has a title bar with the text 'Psg9080 update Setup' and a close button. The main area is titled 'Installation Folder' and contains the question 'Where would you like Psg9080 update to be installed?'. Below this, there is a paragraph of text: 'The software will be installed in the folder listed below. To select a different location, either type in a new path, or click Change to browse for an existing folder.' This is followed by the text 'Install Psg9080 update to:' and a text input field containing 'C:\Program Files\Psg9080 update'. To the right of the input field is a 'Change...' button. At the bottom, there are three buttons: '< Back', 'Next >' (which is highlighted with a dashed border), and 'Cancel'. Additionally, the text 'Space required: 313 KB' and 'Space available on selected drive: 6.96 GB' is displayed.

Installation Folder
Where would you like Psg9080 update to be installed?

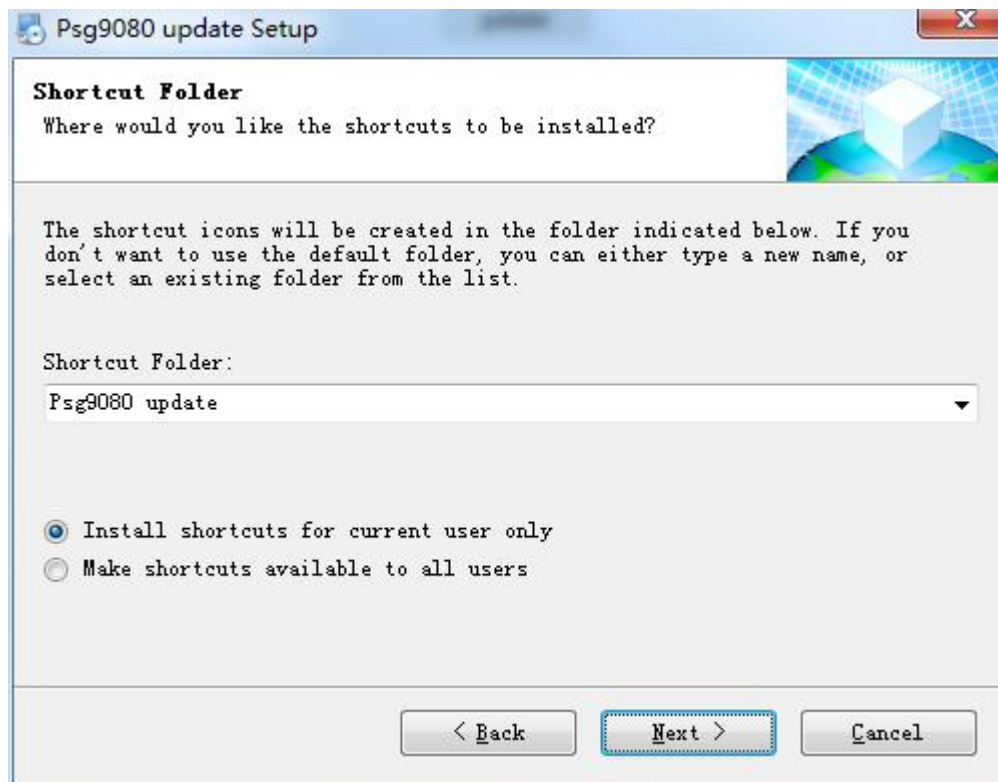
The software will be installed in the folder listed below. To select a different location, either type in a new path, or click Change to browse for an existing folder.

Install Psg9080 update to:
C:\Program Files\Psg9080 update Change...

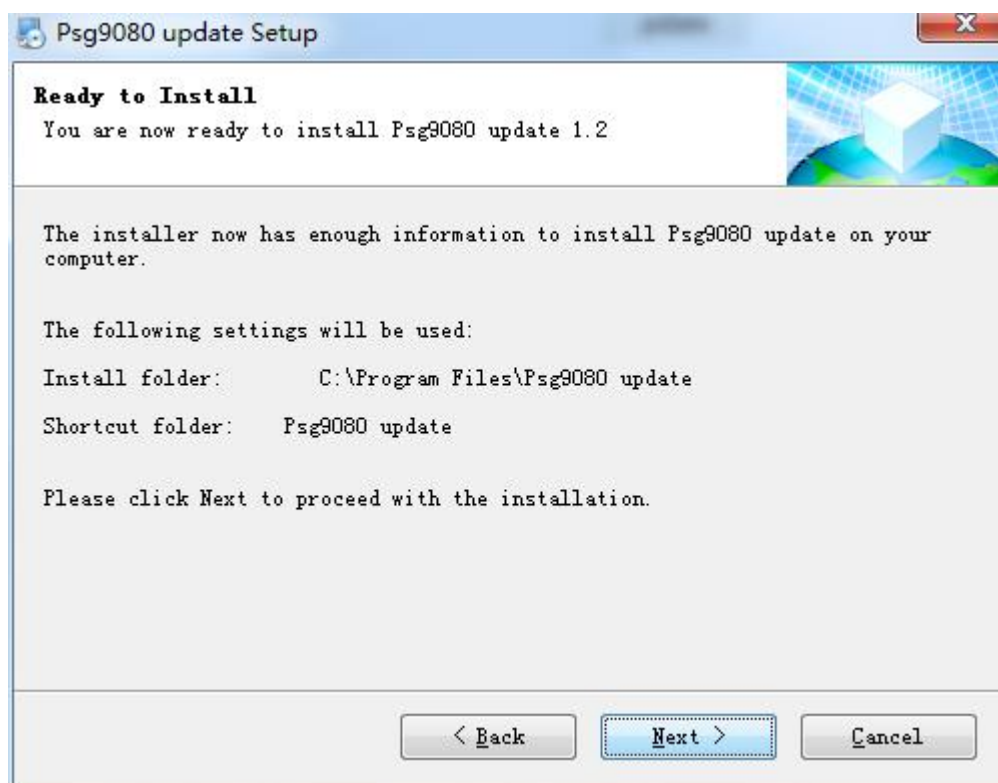
Space required: 313 KB
Space available on selected drive: 6.96 GB

< Back Next > Cancel

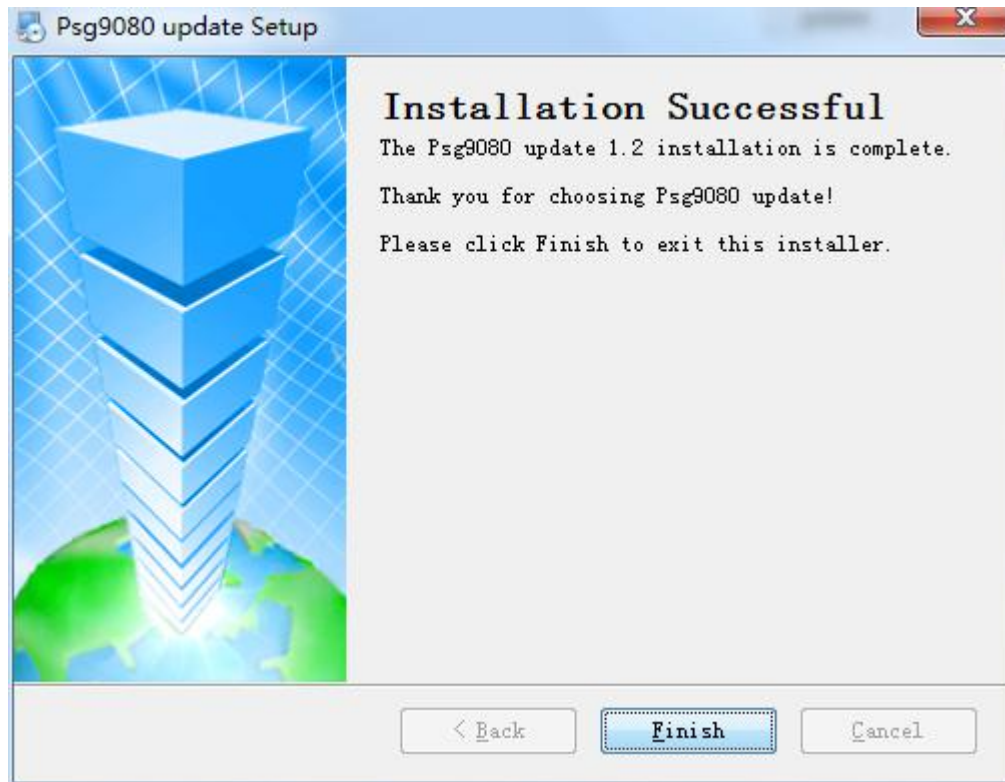
6、点击下一步



7、点击下一步



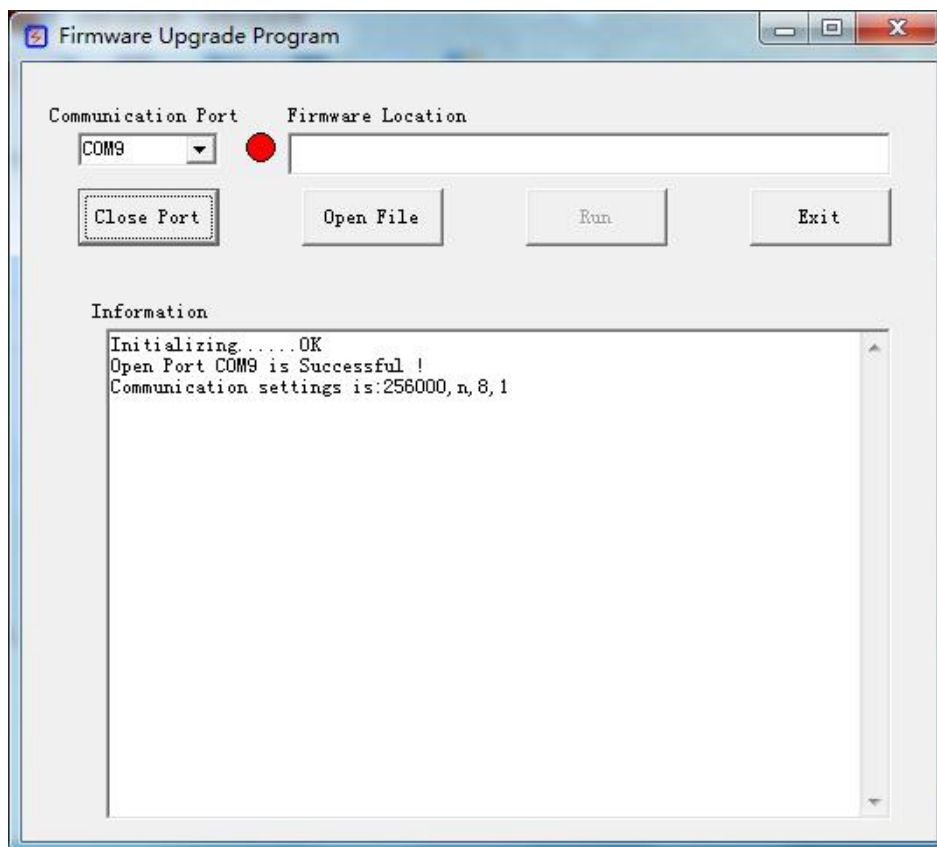
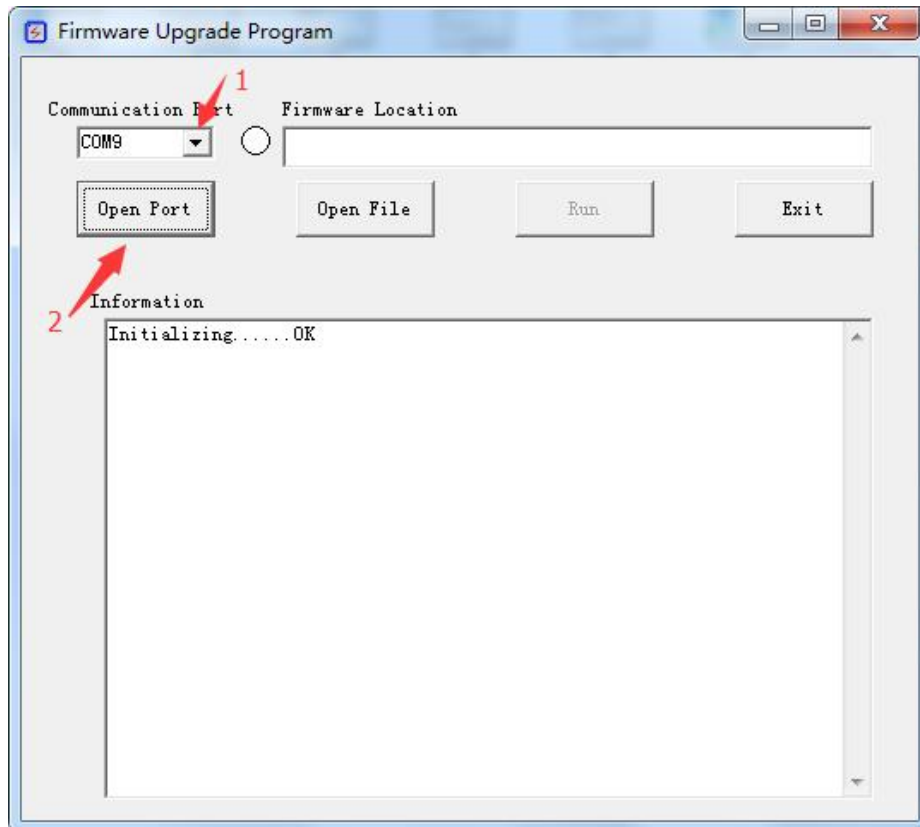
8、点击结束；



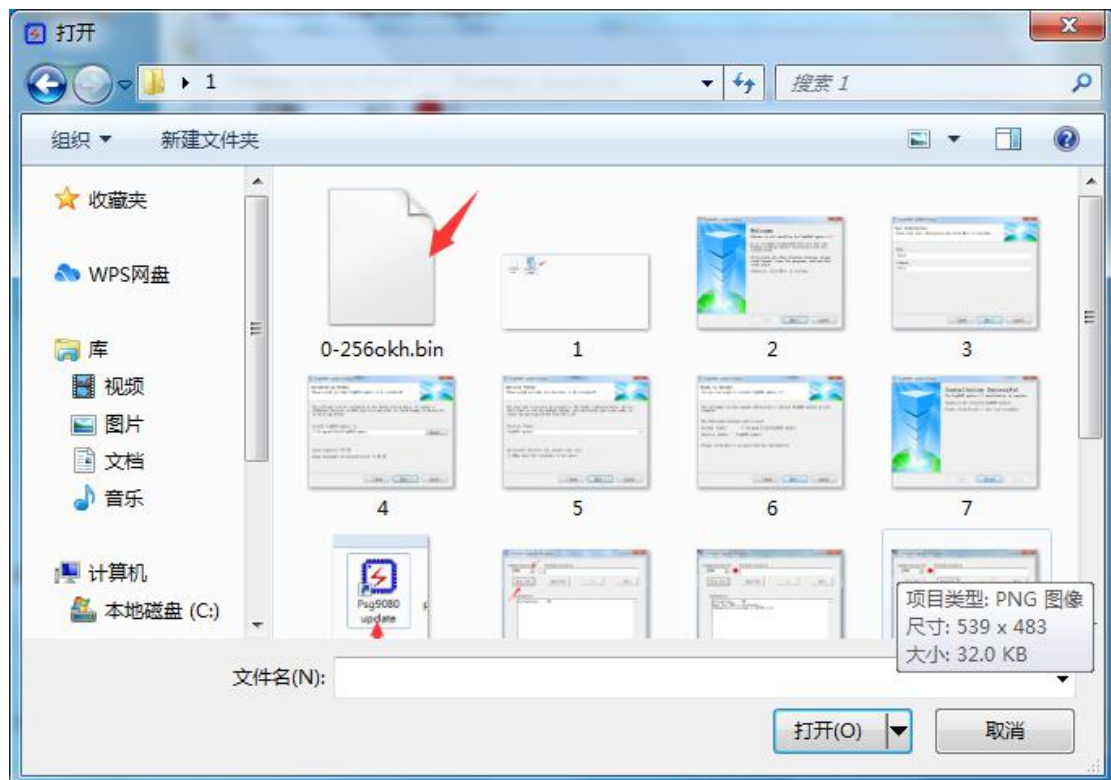
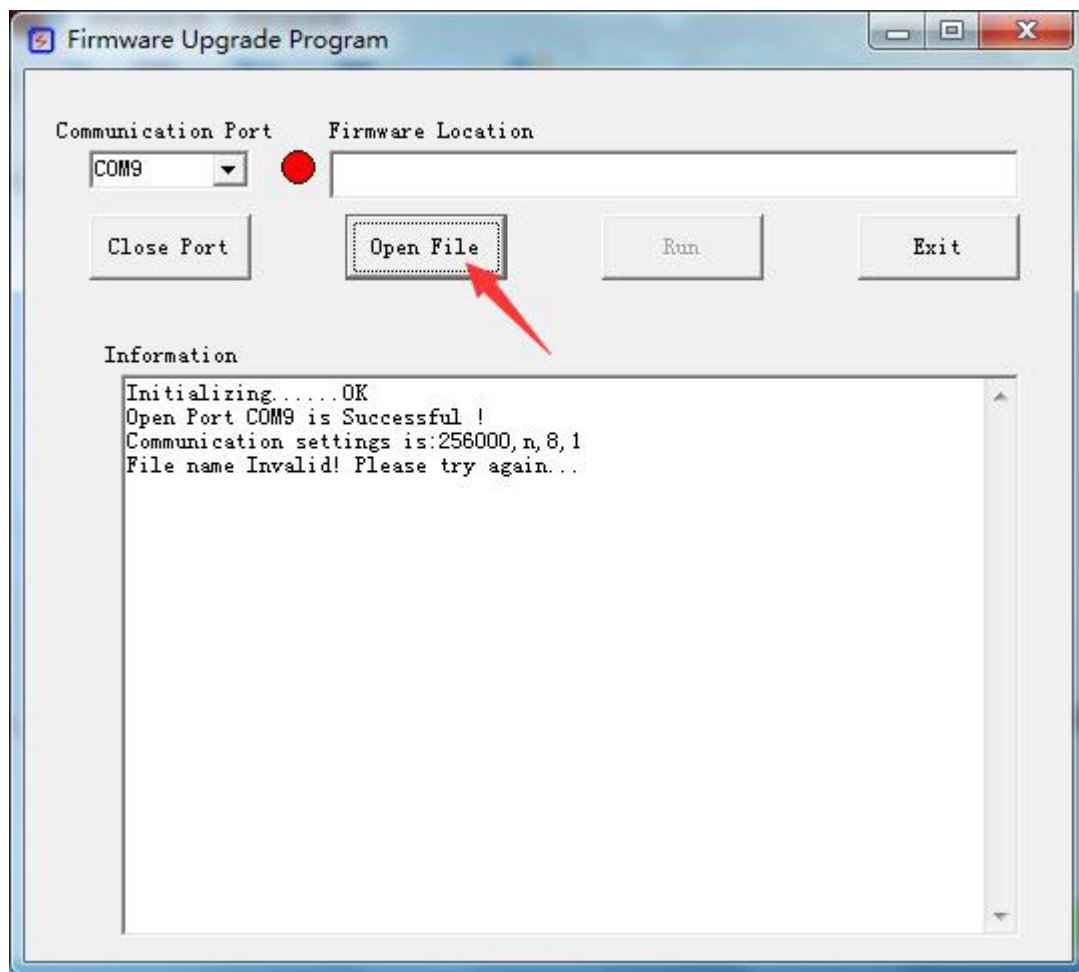
9、到桌面找到升级程序，双击打开软件；



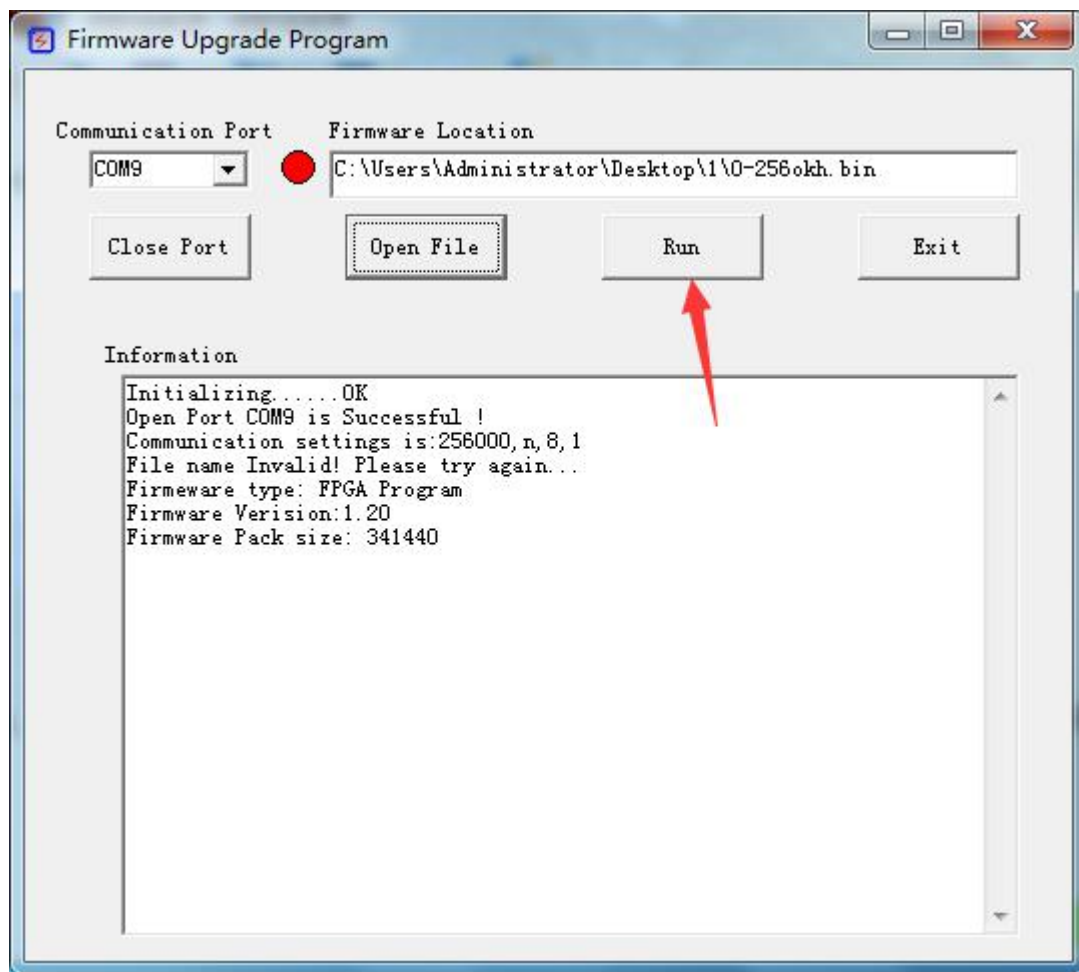
10、先在计算机-属性-设备管理器中查看相应的 COM 端口，然后在升级软件中选择正确的 COM 口，点 OPEN Port



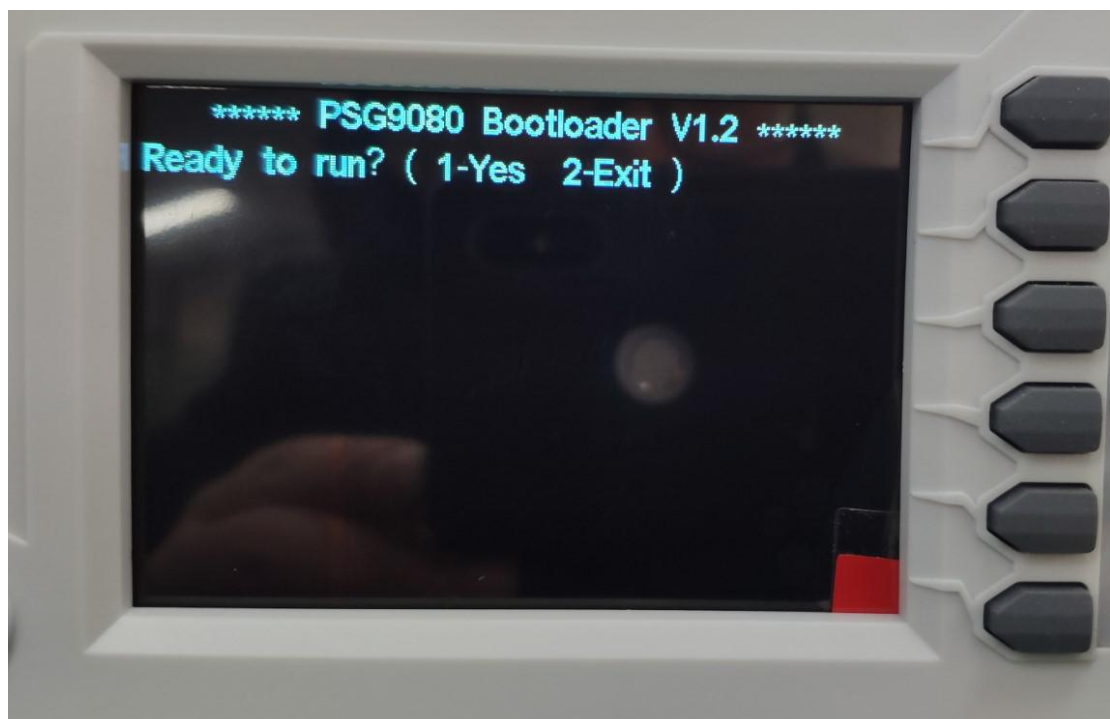
11、点击 Open File 选择新的固件



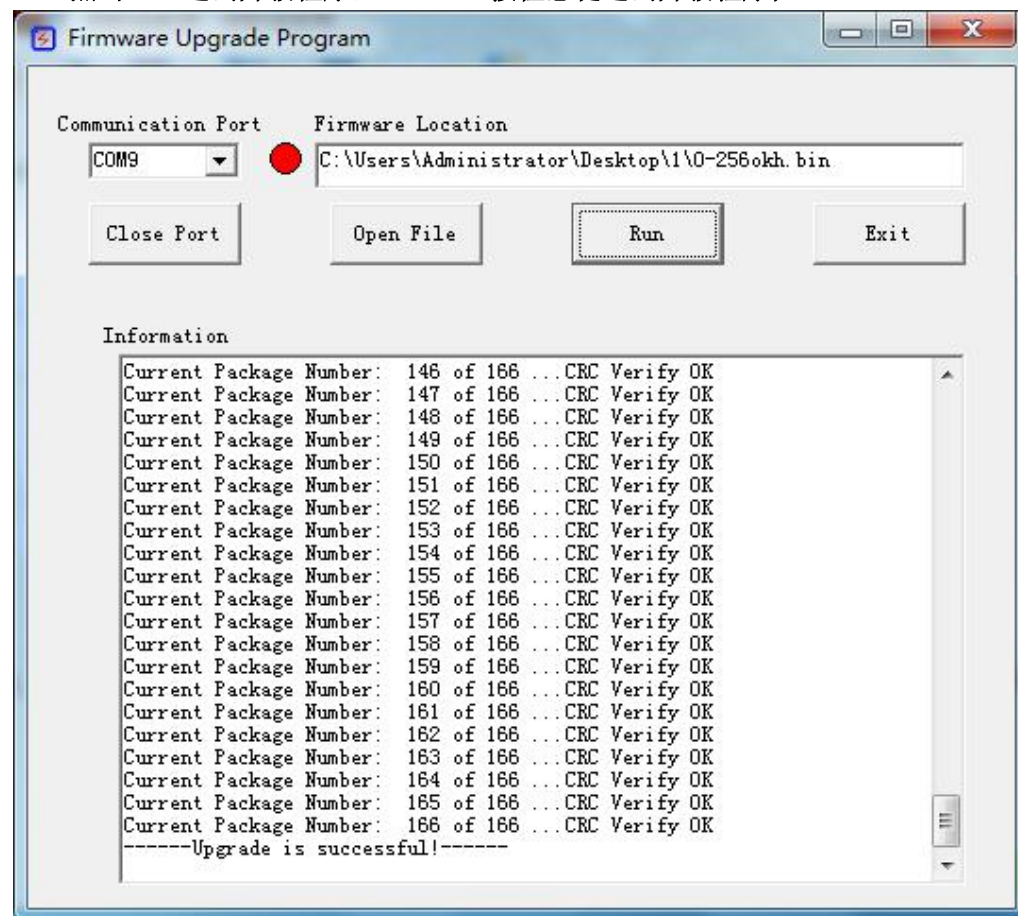
12、点击 RUN



PSG9080 显示屏显示如下，此时不需要在 PSG9080 上做任何操作。



13、点击 Exit 退出升级程序，PSG9080 按任意键退出升级程序；



在 PSG9080 中按任意键退出升级程序

