

LBP-1210

CIRCUIT DIAGRAM

REVISION 0

Canon

JULY 2002

RY8-6317-000

PREFACE

These circuit diagrams for the LBP-1210 are provided to aid service technicians when ordering PCB parts.

When major changes are made to the products, a revised version of the circuit diagrams will be produced. However in other cases, information will be communicated when necessary by service information.

Canon Inc.

Peripheral Products Quality Planning Div.
Peripheral Products Technical Documentation Dept
4202, Fukara, Susono-shi, Shizuoka 410-1196, Japan

COPYRIGHT © 2002 CANON INC.

Printed in Japan

Imprimé au Japon

Use of this manual should be strictly supervised to avoid disclosure of confidential information.

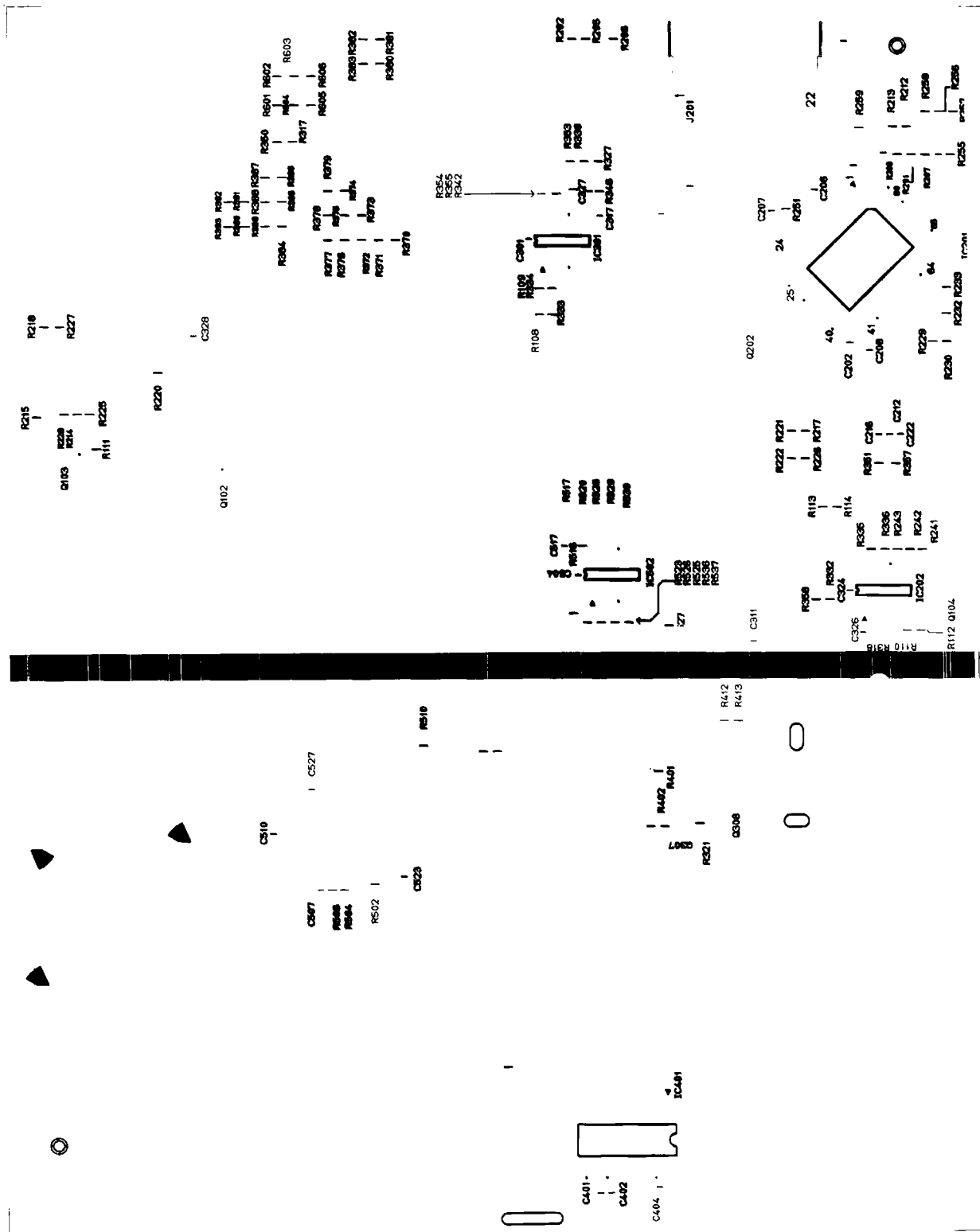
CONTENTS

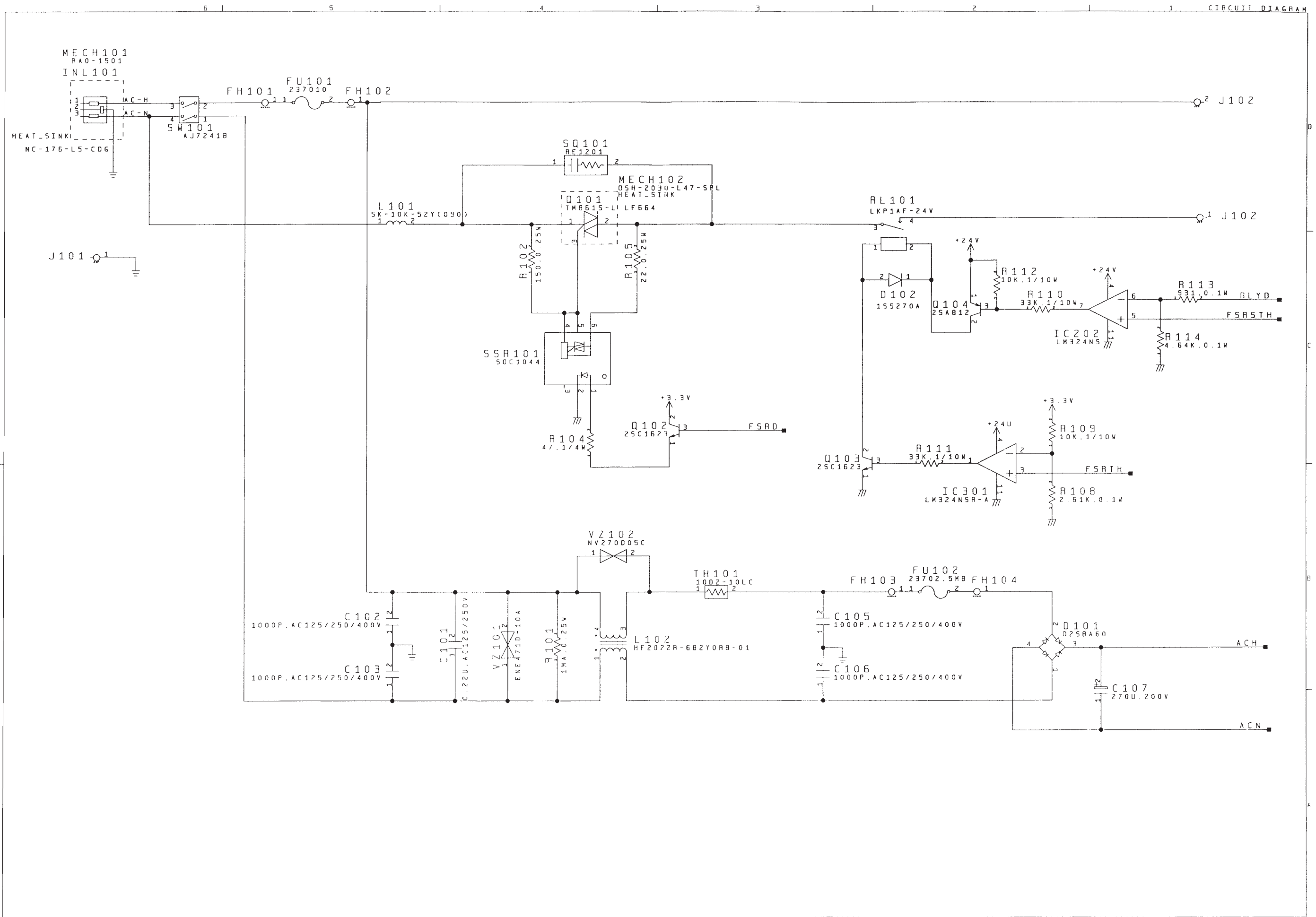
- CD 1. ENGINE CONTROLLER PCB ASS'Y (100-127V)
- CD1A. ENGINE CONTROLLER PCB ASS'Y (220-240V)
- CD 2. INTERMEDIATE PCB ASS'Y
- CD 3. INTERFACE CONTROLLER PCB ASS'Y

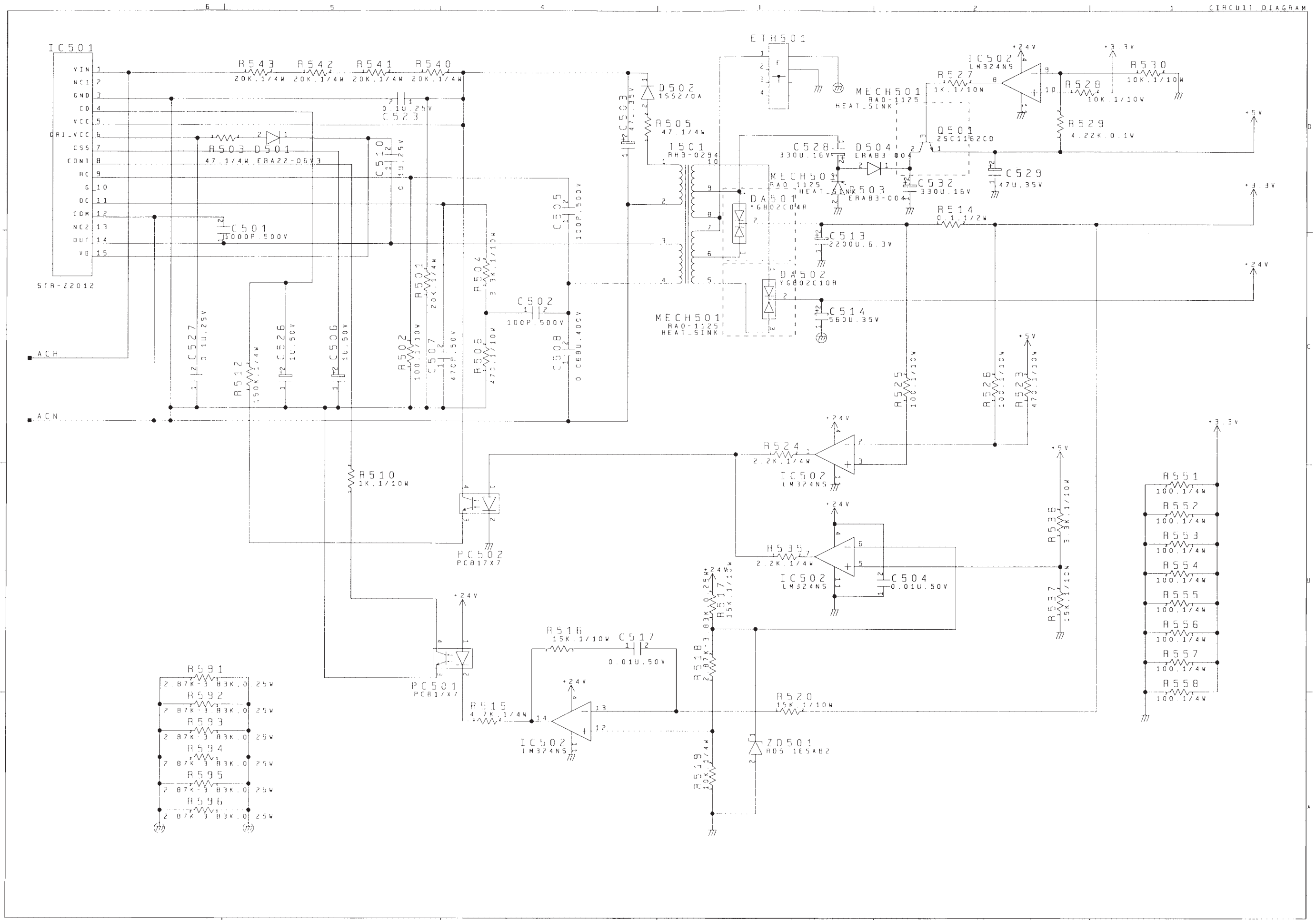
A. NUMERICAL INDEX

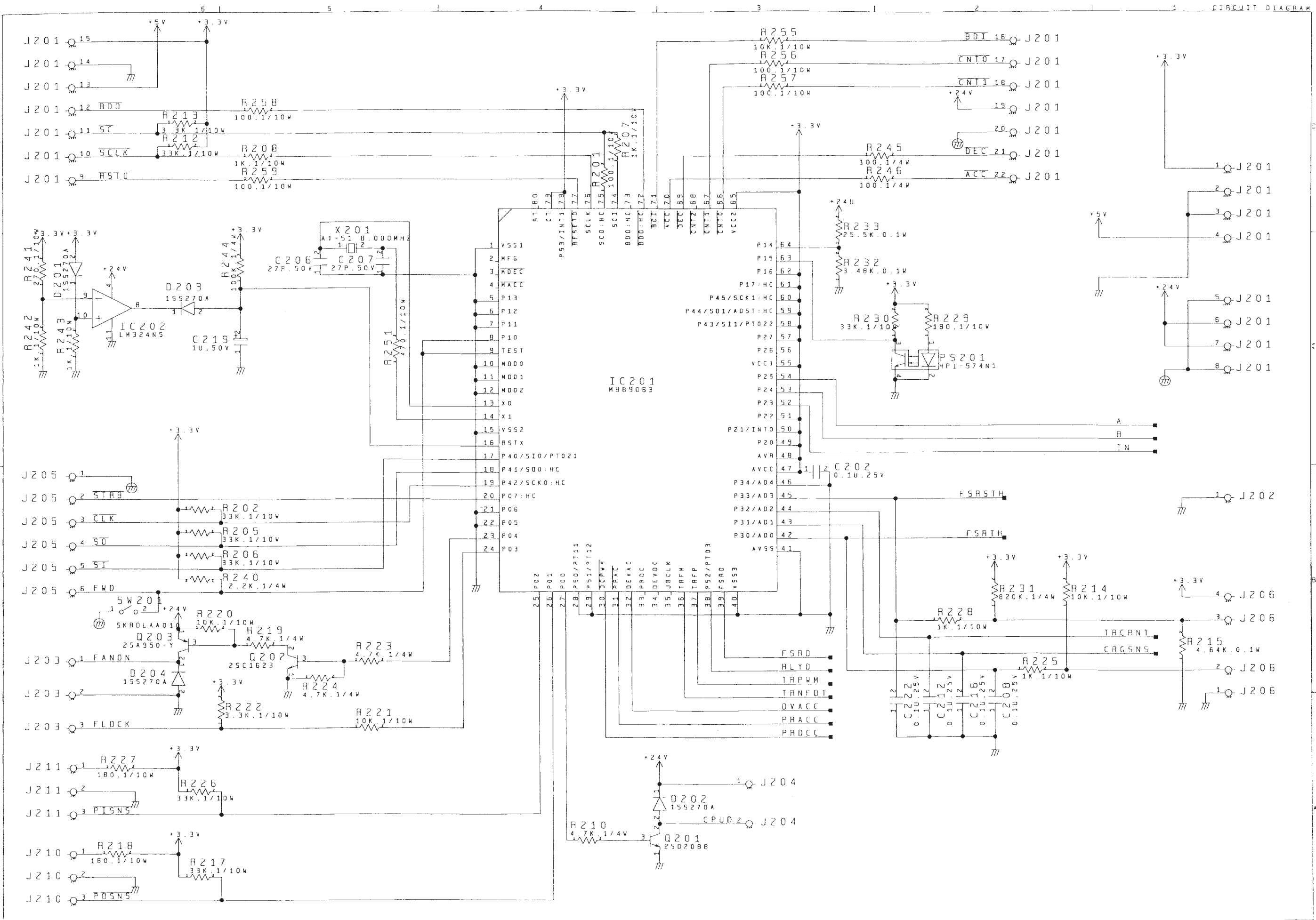
B. CIRCUIT REVISION CHART

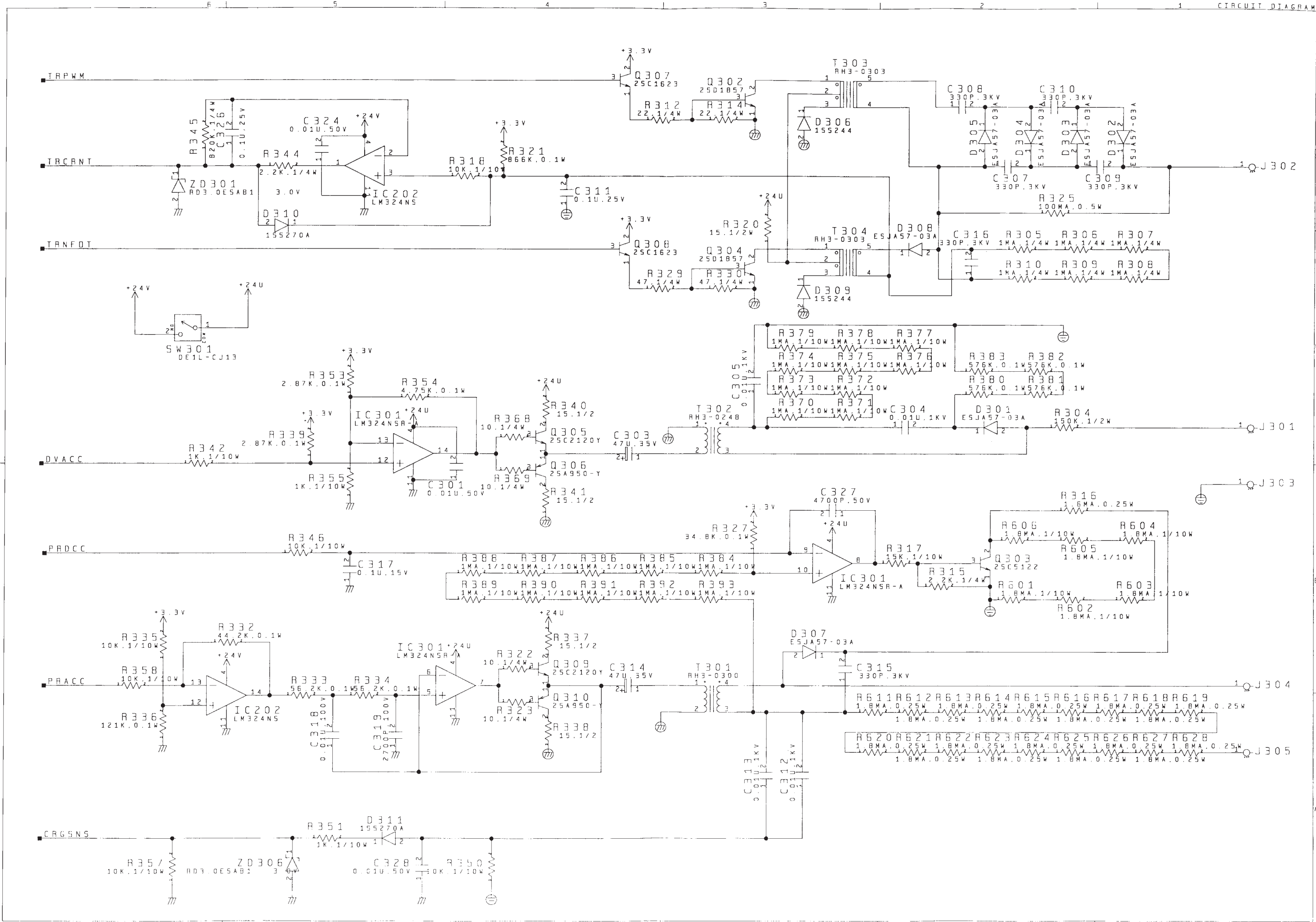
FIGURE CD 1 ENGINE CONTROLLER PCB ASS'Y (100-127V) (2/2)











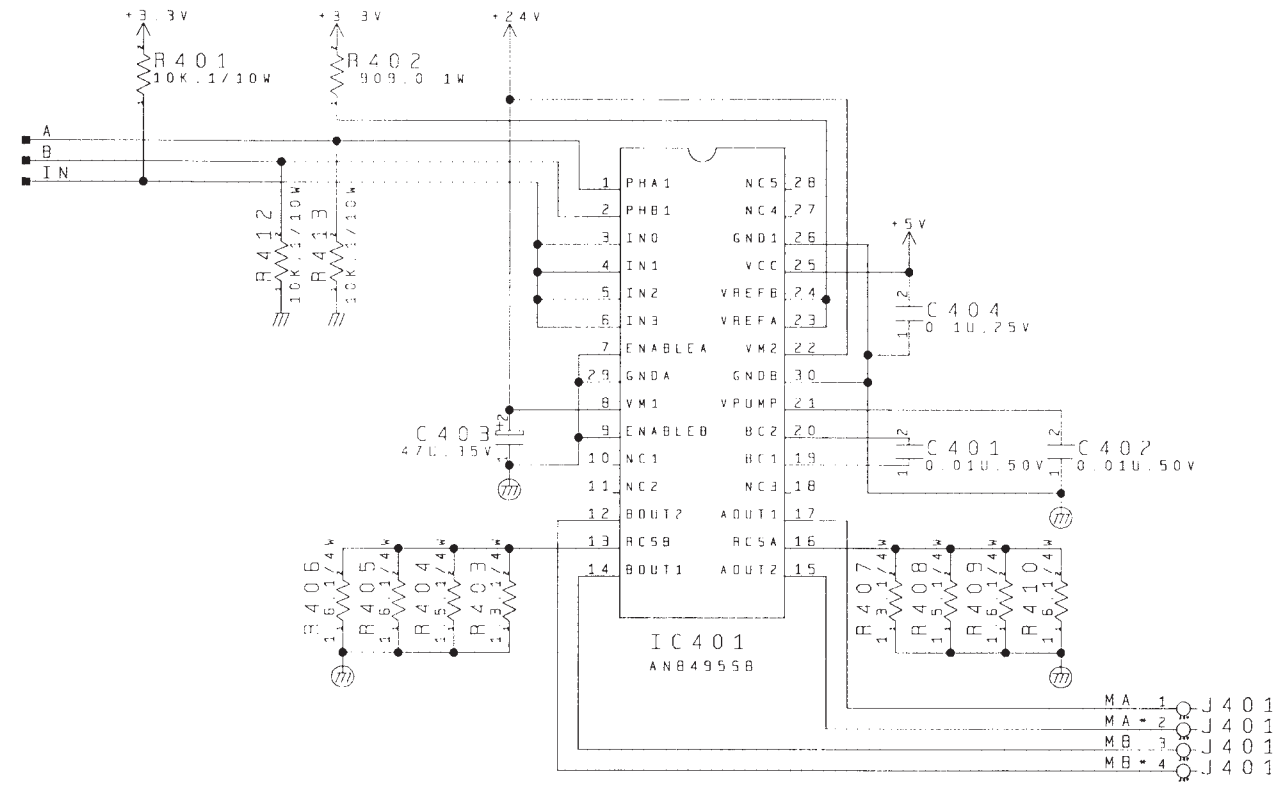


FIGURE & KEY NO.	PART NUMBER	R A N K	Q' T Y	DESCRIPTION	SERIAL NUMBER / REMARKS
CD 1 -	RG0-1136-000		1	ENGINE CONTROLLER PCB ASS'Y	100-127V

FIGURE CD1A ENGINE CONTROLLER PCB ASS'Y (220-240V) (1/2)

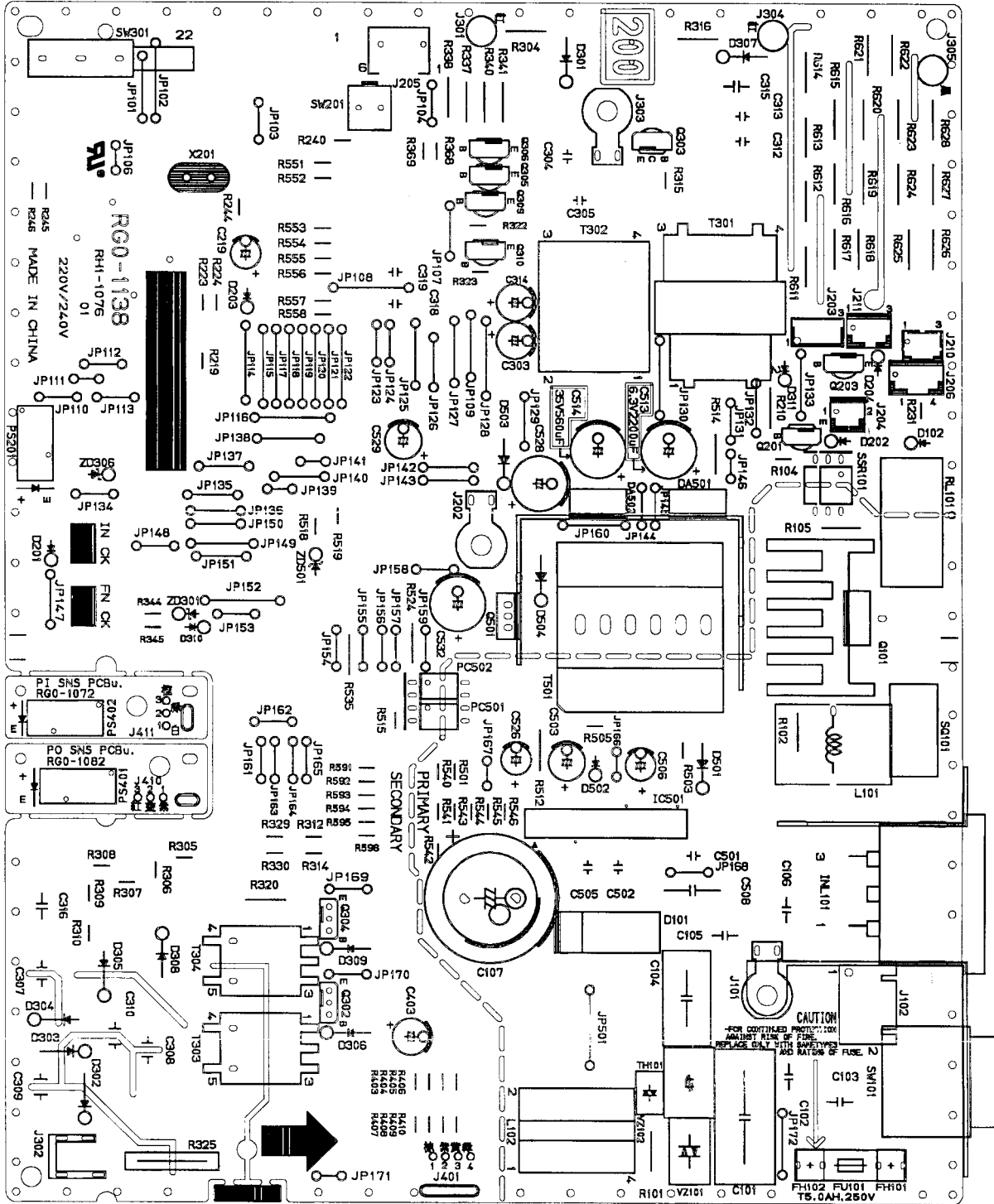
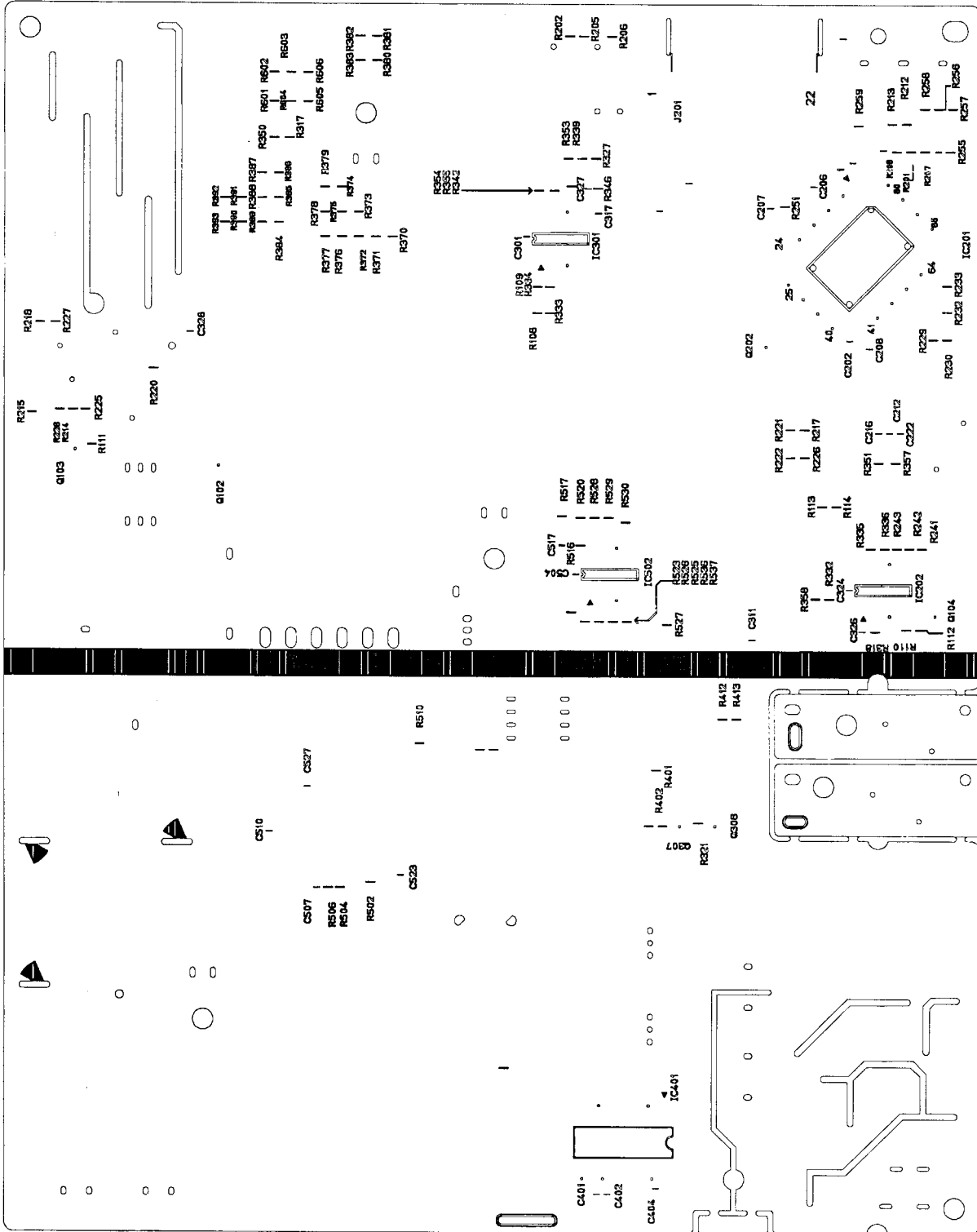
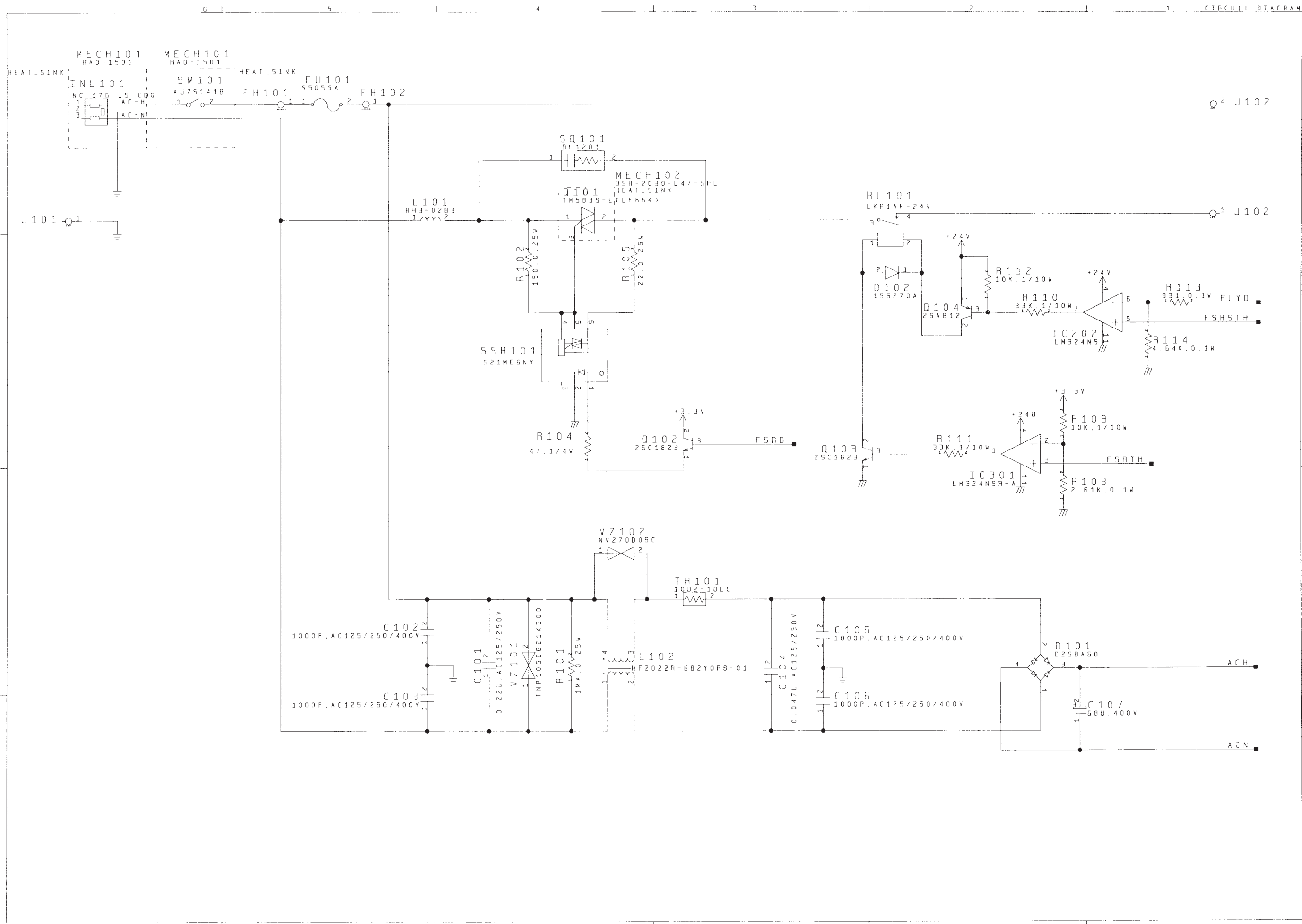
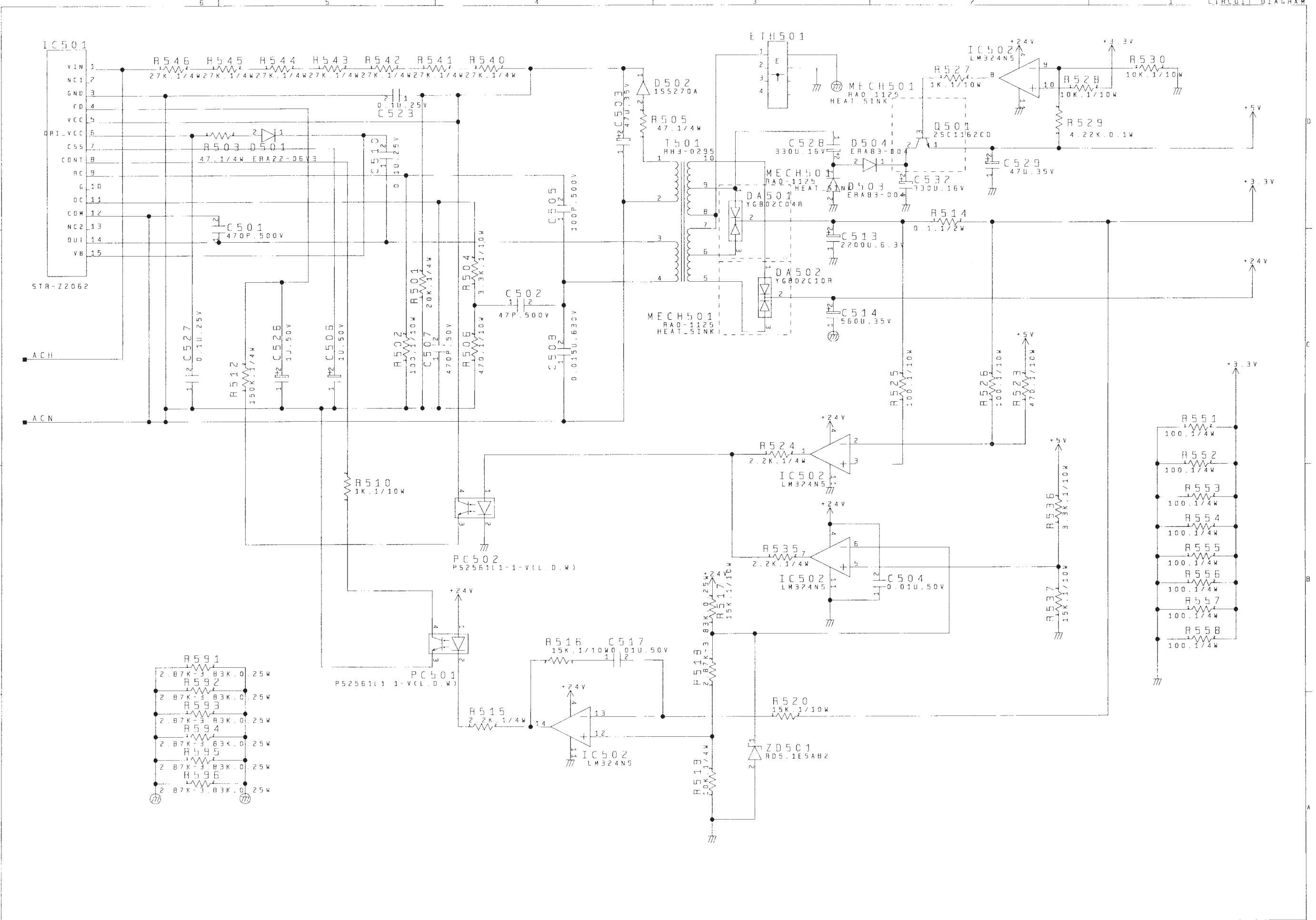
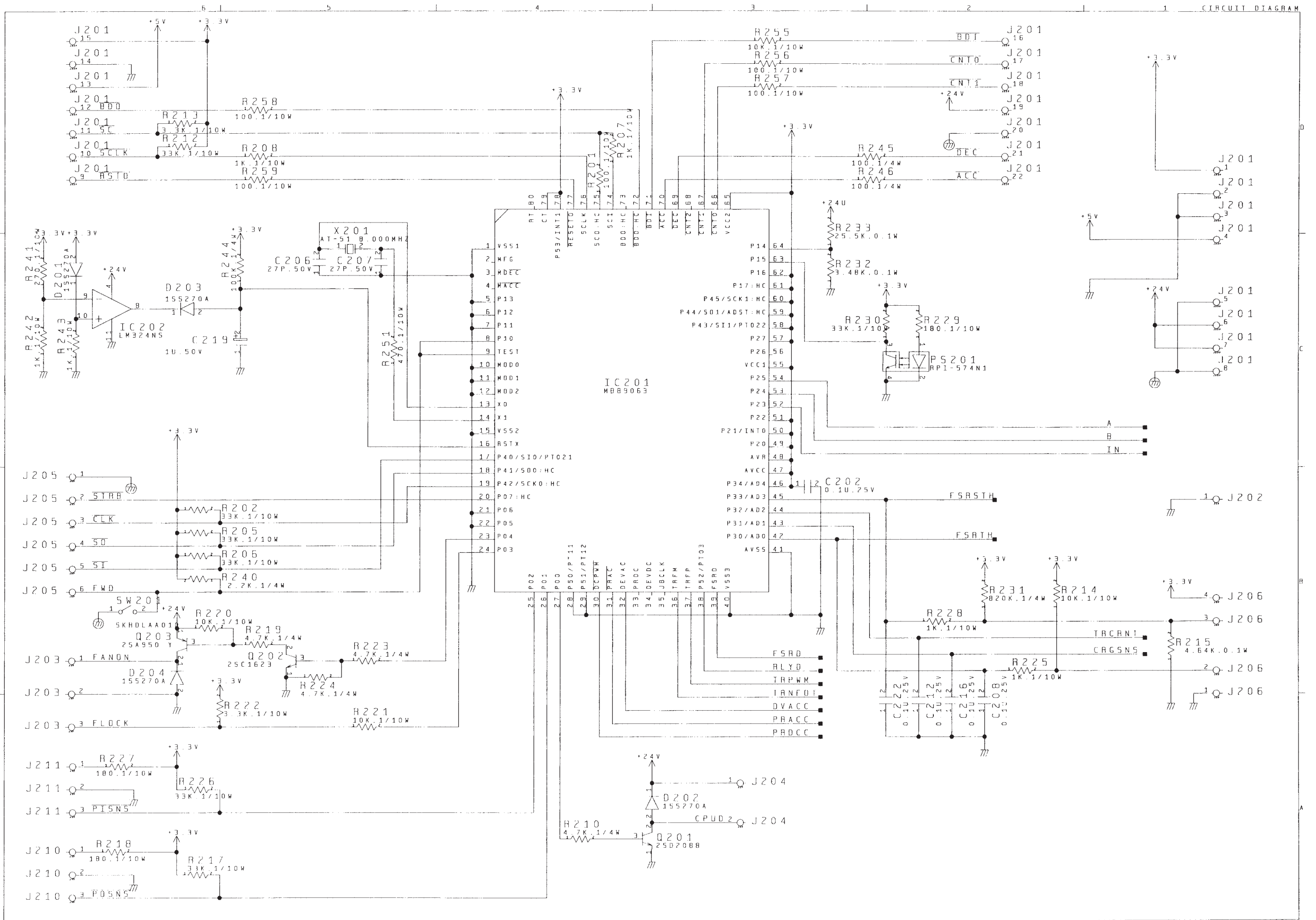


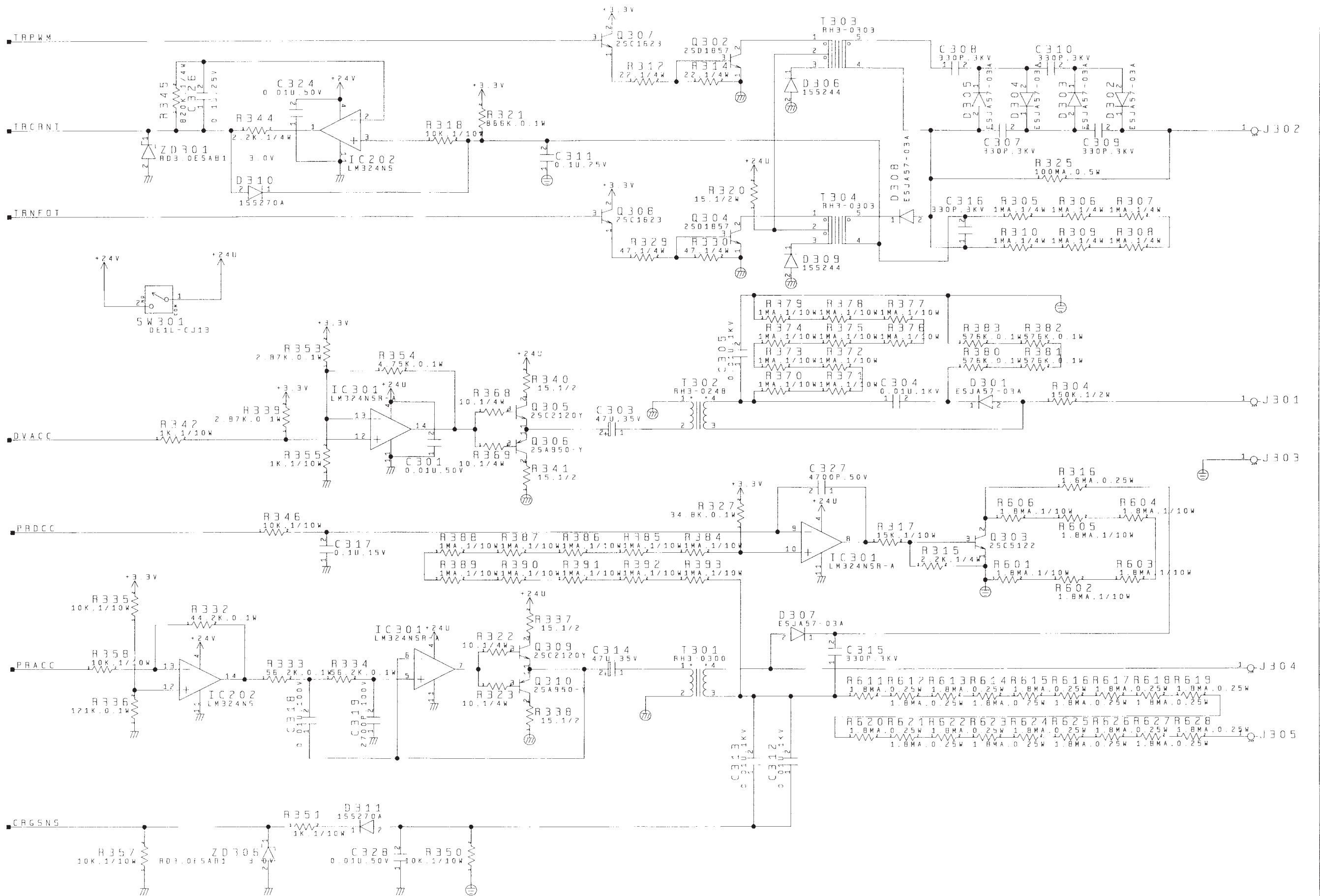
FIGURE CD1A ENGINE CONTROLLER PCB ASS'Y (220-240V) (2/2)











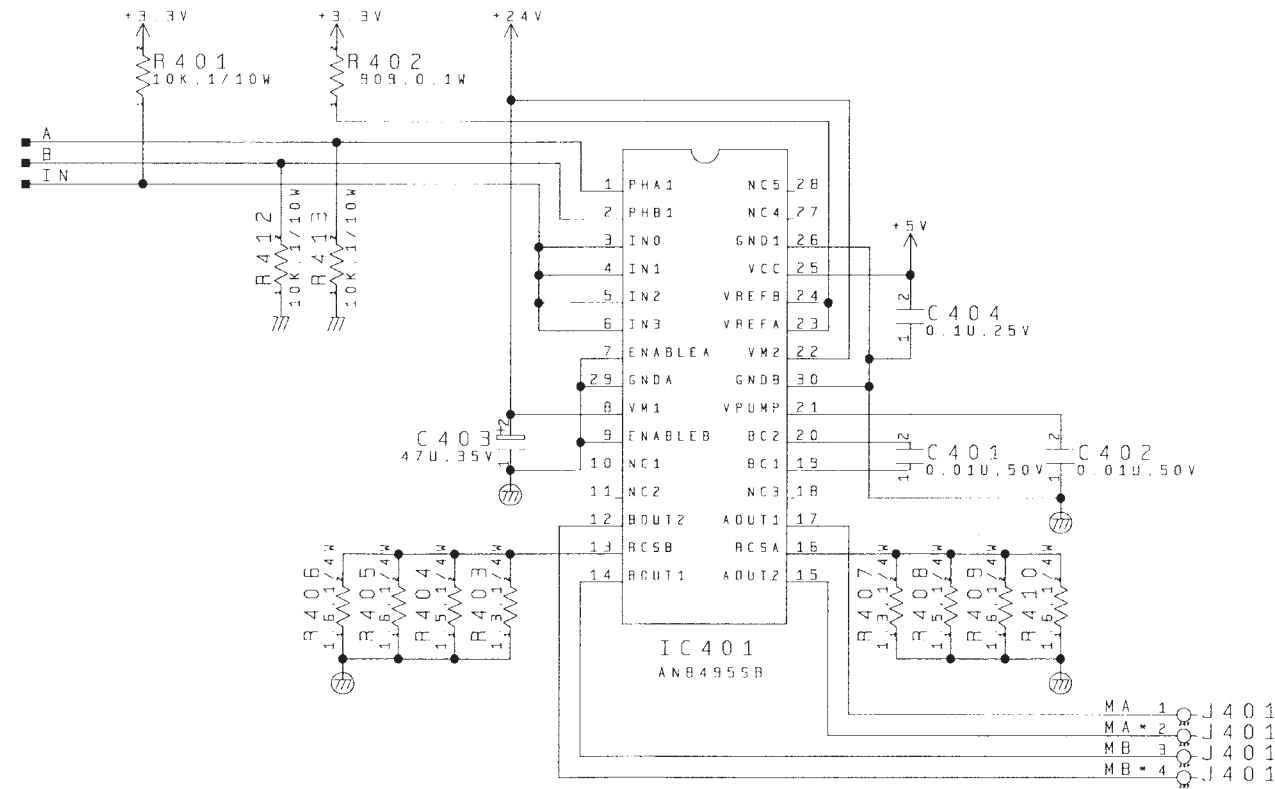
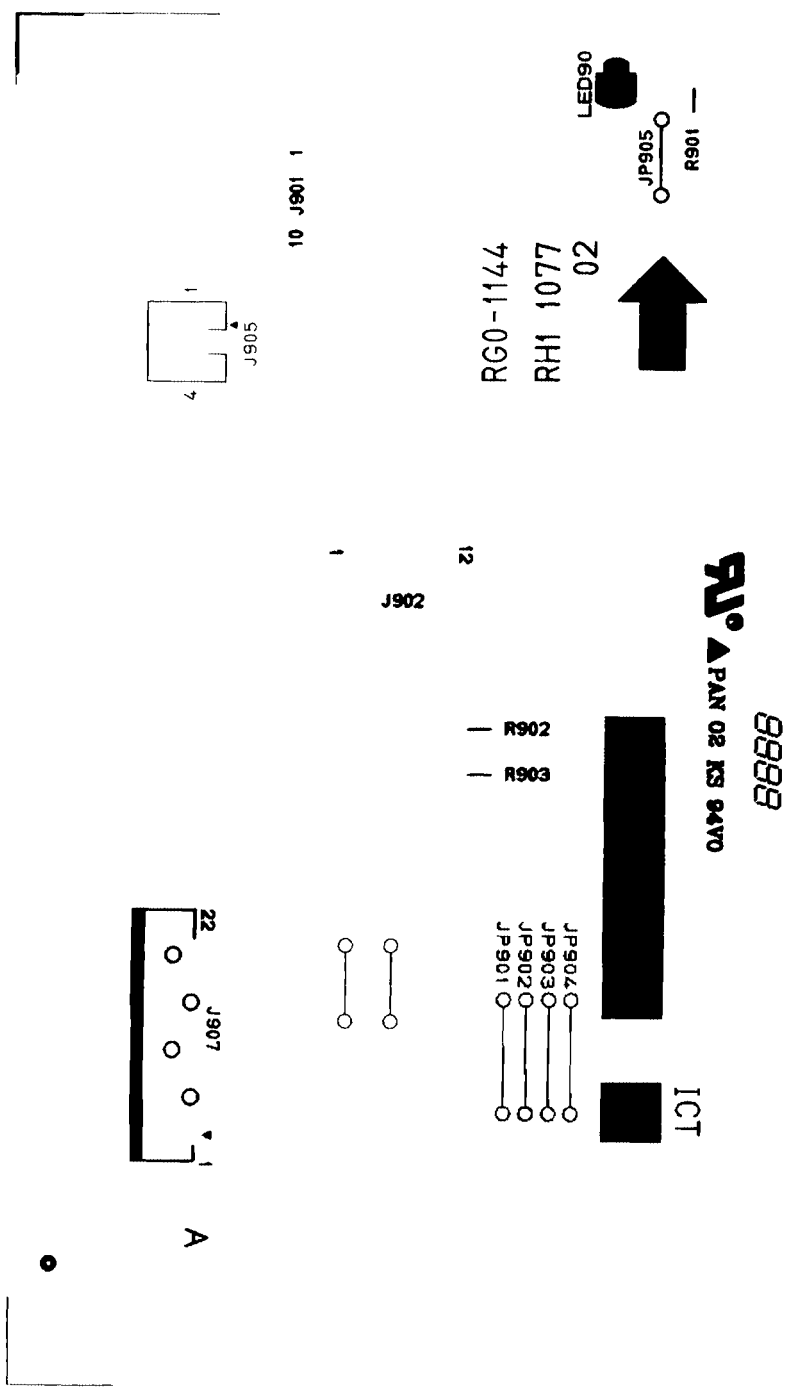


FIGURE & KEY NO.	PART NUMBER	R A N K	Q' T Y	DESCRIPTION	SERIAL NUMBER / REMARKS
CD 1A -	RG0-1138-000		1	ENGINE CONTROLLER PCB ASS'Y	220-240V

FIGURE CD 2 INTERMEDIATE PCB ASS'Y



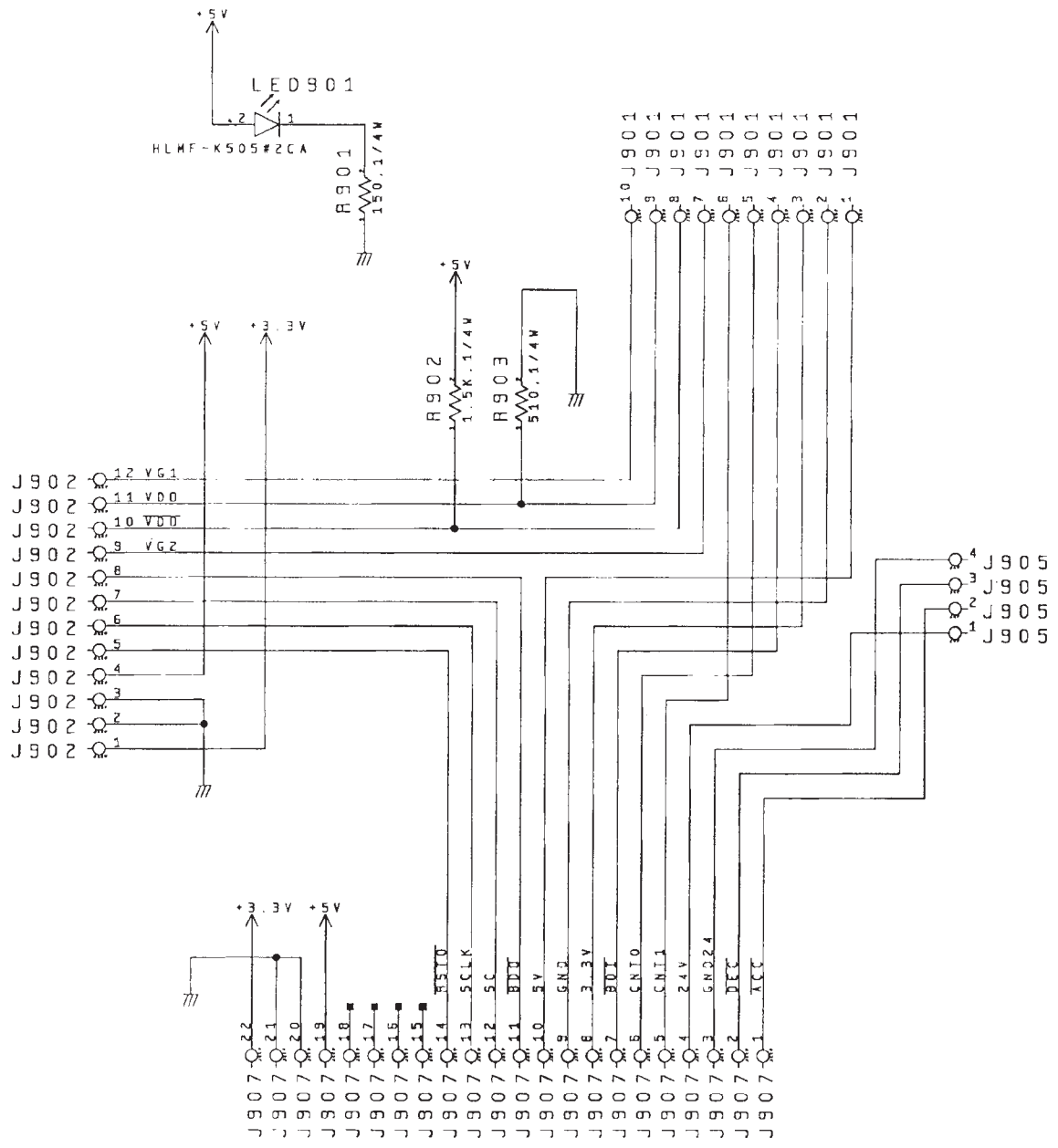
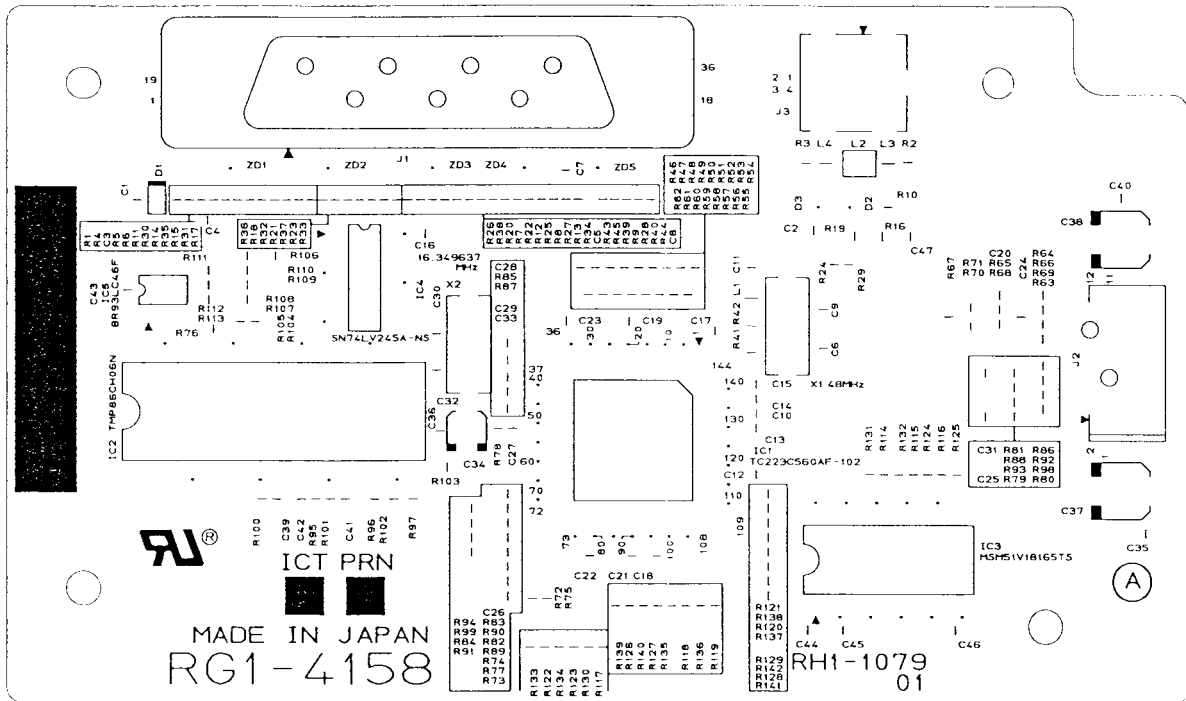
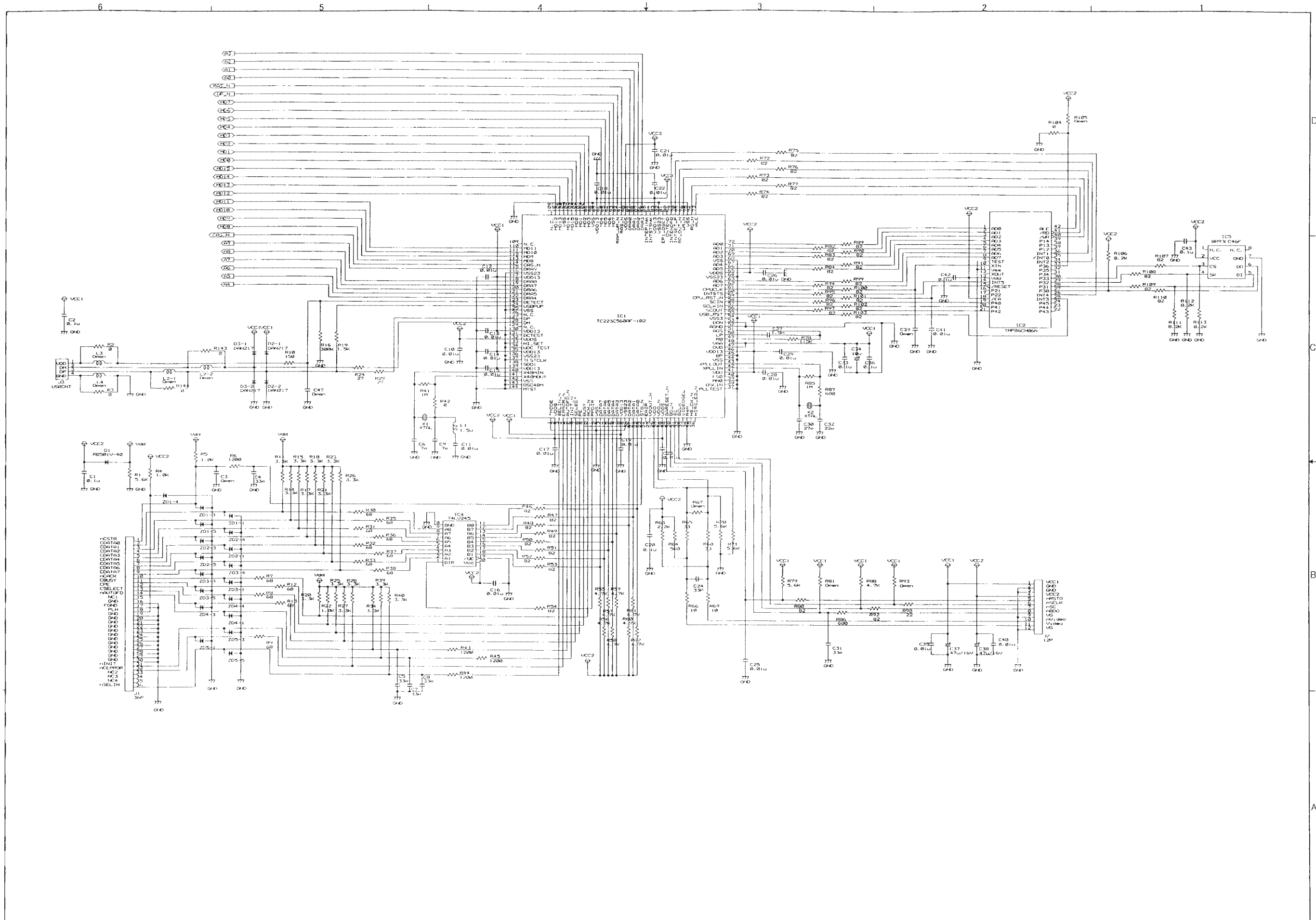


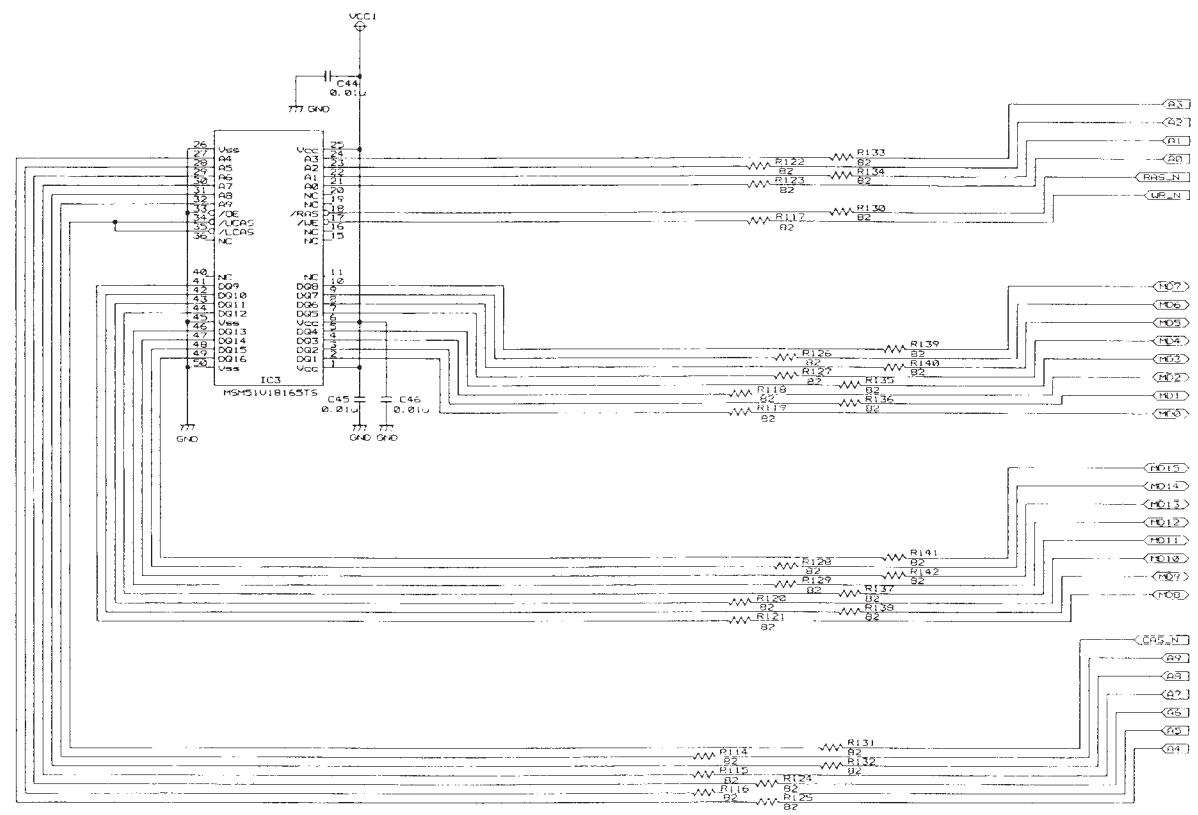
FIGURE & KEY NO.	PART NUMBER	R A N K	Q' T Y	DESCRIPTION	SERIAL NUMBER / REMARKS
CD 2 -	RG0-1144-000		1	INTERMEDIATE PCB ASS'Y	

FIGURE CD 3 INTERFACE CONTROLLER PCB ASS'Y





6 5 4 3 2 1



D
C
B
A

FIGURE &	PART NUMBER	R A N K	Q' T Y	DESCRIPTION	SERIAL NUMBER / REMARKS
CD 3 -	RG1-4158-000		1	INTERFACE CONTROLLER PCB ASS'Y	

A NUMERICAL INDEX

PART NUMBER	FIGURE & KEY NO.	PART NUMBER	FIGURE & KEY NO.	PART NUMBER	FIGURE & KEY NO.
RG0-1136-000 RG0-1138-000 RG0-1144-000 RG1-4158-000	CD 1 - CD1A- CD 2 - CD 3 -				

Prepared by
Peripheral Products Quality Planning Div.
Peripheral Products Technical Documentation Dept.
CANON INC.
Printed in Japan

REVISION 0 [JULY 2002]

4202, Fukara, Susono-shi, Shizuoka 410-1196, Japan

Canon