

# ***SERVICE GUIDE***

**KYE** SYSTEMS CORP.

**ColorPage-Slim 1200 USB2**  
**1200Dpi**



**ColorPage-Slim 1200 USB2**

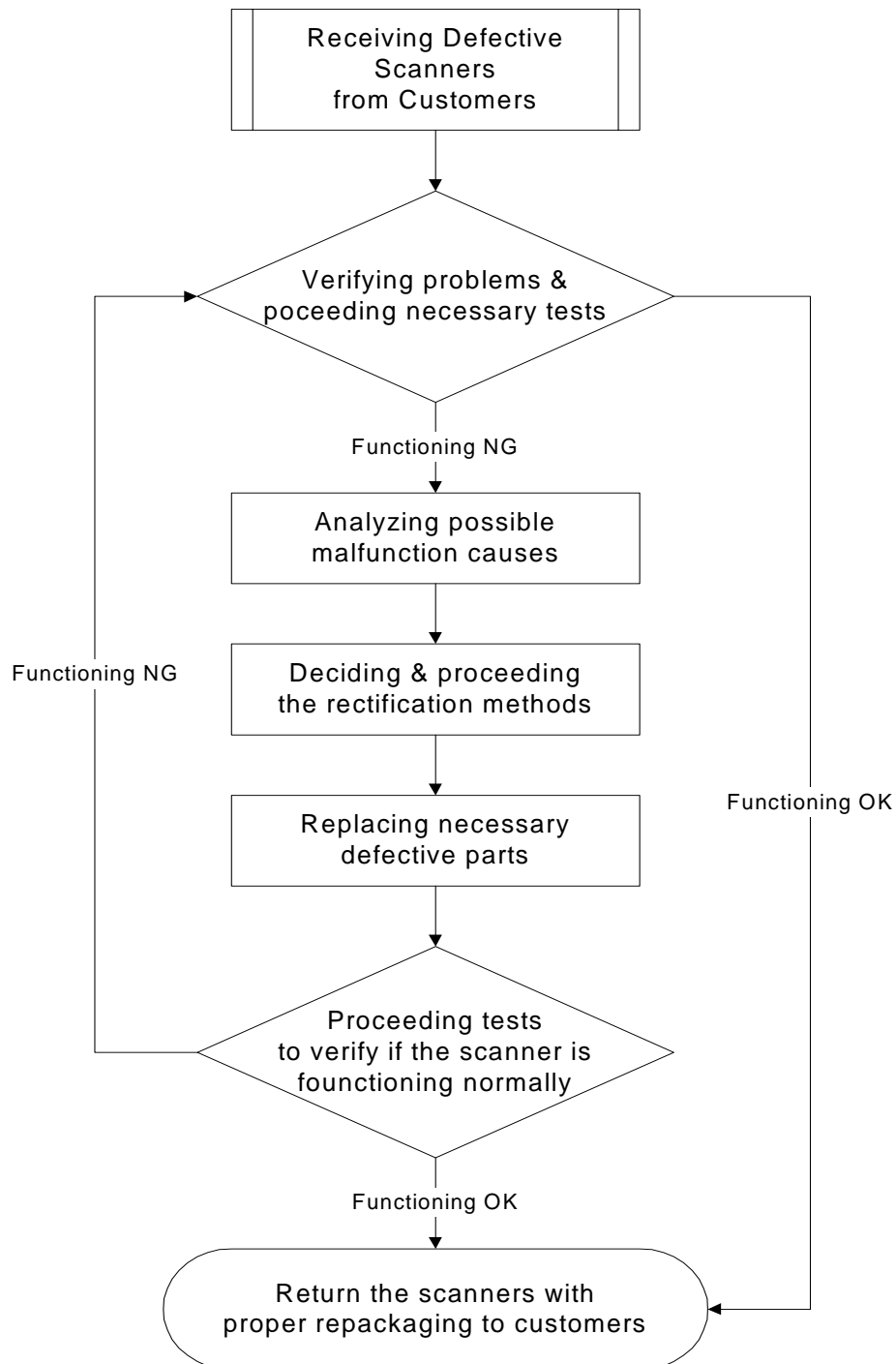
# Table of Contents

<b>Chapter 1. How to Handle Defective Returns .....</b>	<b>1</b>
<i>Overview .....</i>	<i>1</i>
<i>Problems .....</i>	<i>2</i>
Problems Descriptions .....	2
Solutions of the problems.....	2
<b>Chapter 2. Assembly and Disassembly.....</b>	<b>6</b>
<i>How to Assembly and Disassembly Scanner.....</i>	<i>6</i>
How to Assembly & Disassembly the Scanner .....	6
<b>Chapter 3. Important Notes .....</b>	<b>14</b>
<i>Packing requirement for sending the PCB assembly .....</i>	<i>14</i>
<i>Short of spare parts while repairing a scanner.....</i>	<i>14</i>
<i>Part List of Repairing .....</i>	<i>15</i>
<i>System Block.....</i>	<i>16</i>
<i>Product Explode Map.....</i>	<i>17.</i>

# Chapter 1.

## How to Handle Defective Returns

### Overview



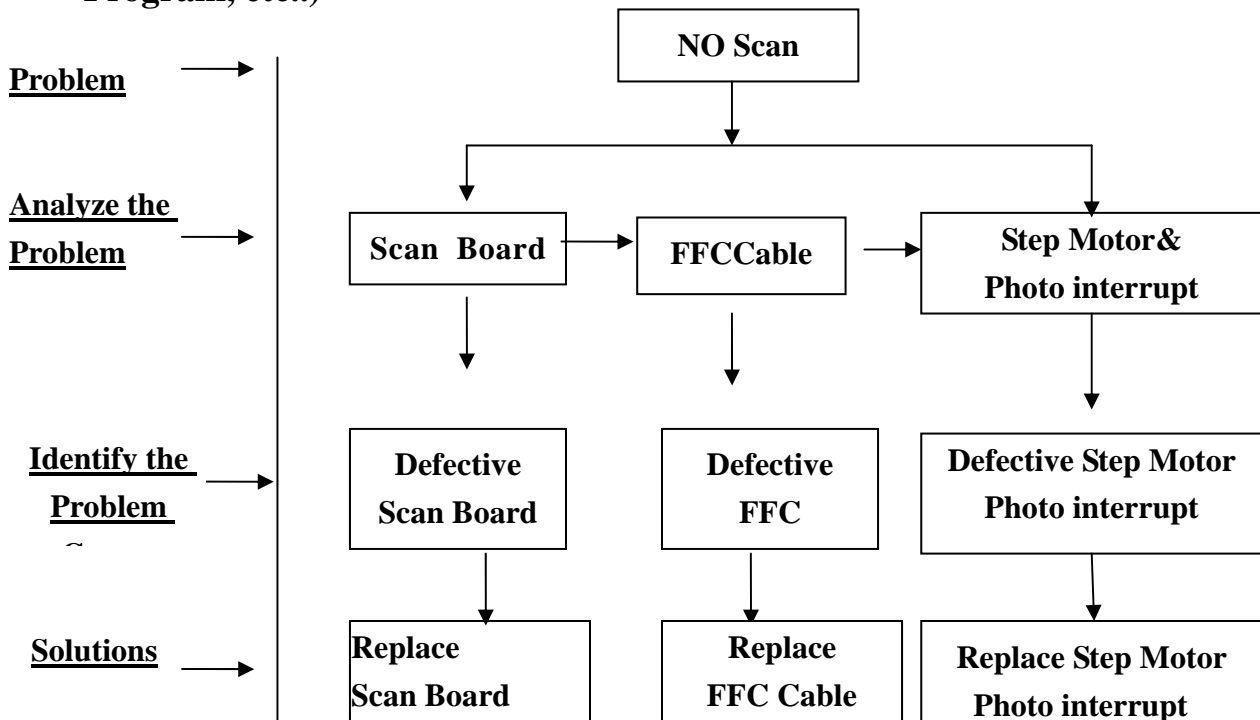
## Problems

### Problems Descriptions

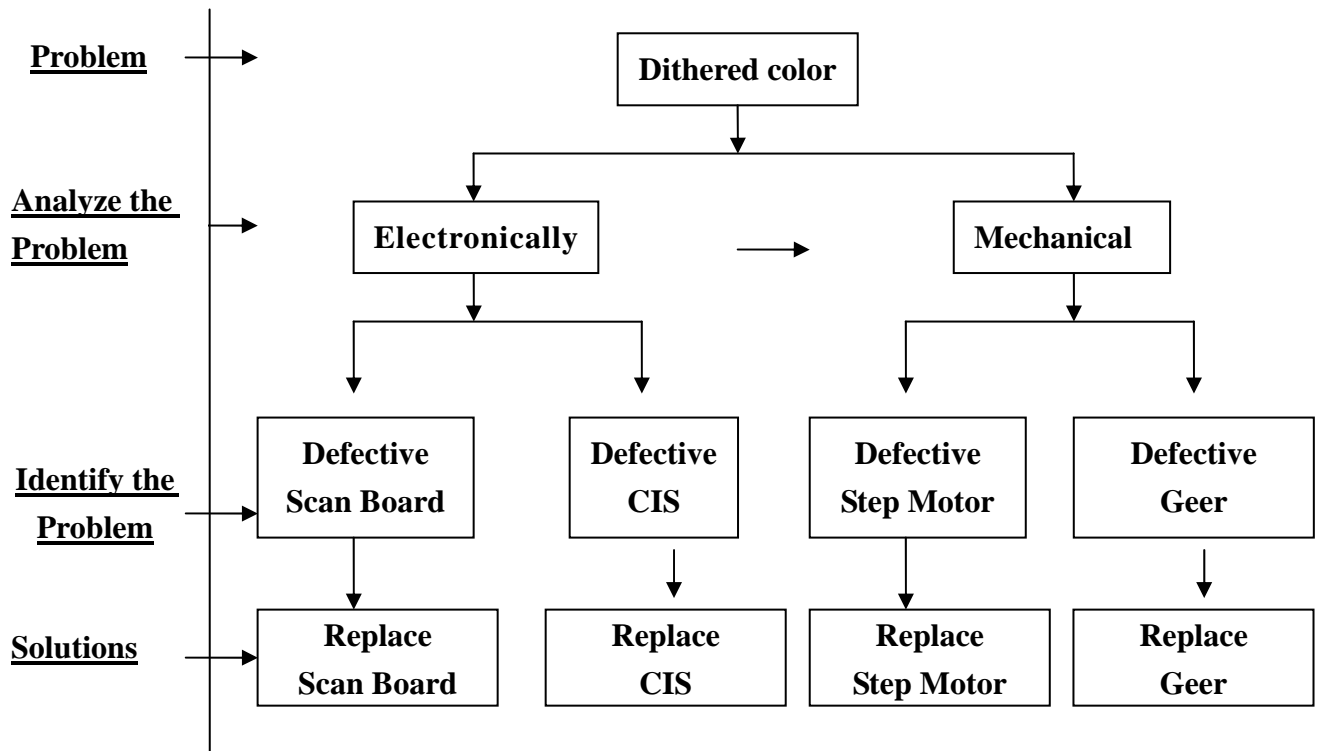
- 1 **No Scan** (Including: Scanner not functioning, or fail to activate TWAIN program, etc..)
- 2 **Dithered color**
- 3 **No Image**
- 4 **Noise**
- 5 **Button not work**
- 6 **Others** ( such as the Broken of the Defection Mirror, or the Broken of the Document Glass, etc..)

### Solutions of the problems

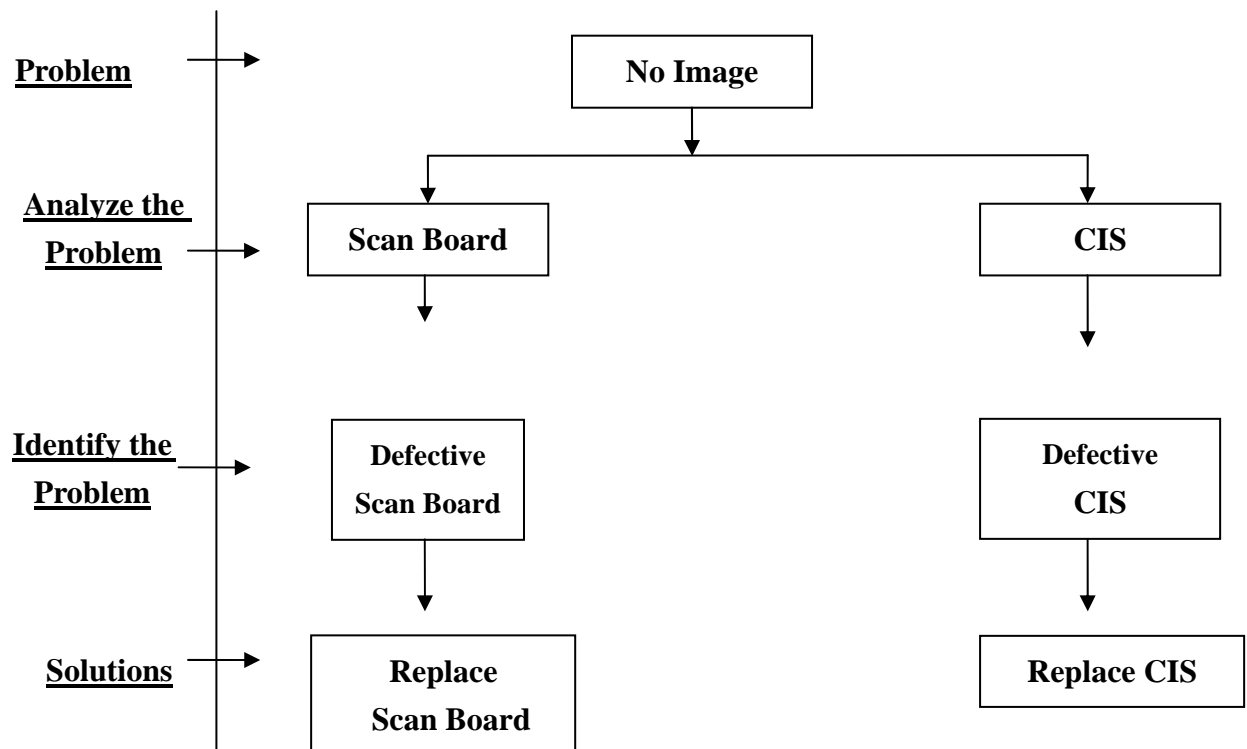
- **No Scan (including: Scanner not functioning, or fail to activate TWAIN Program, etc..)**



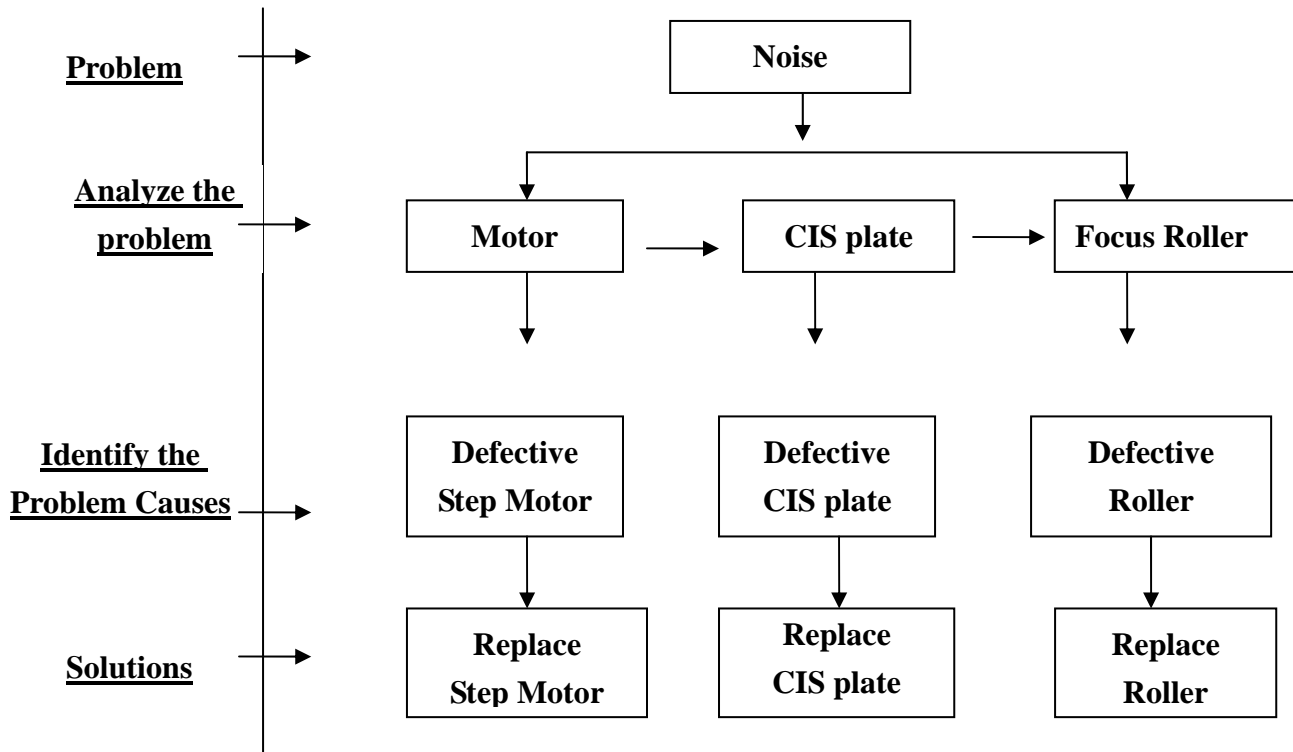
- Dithered color



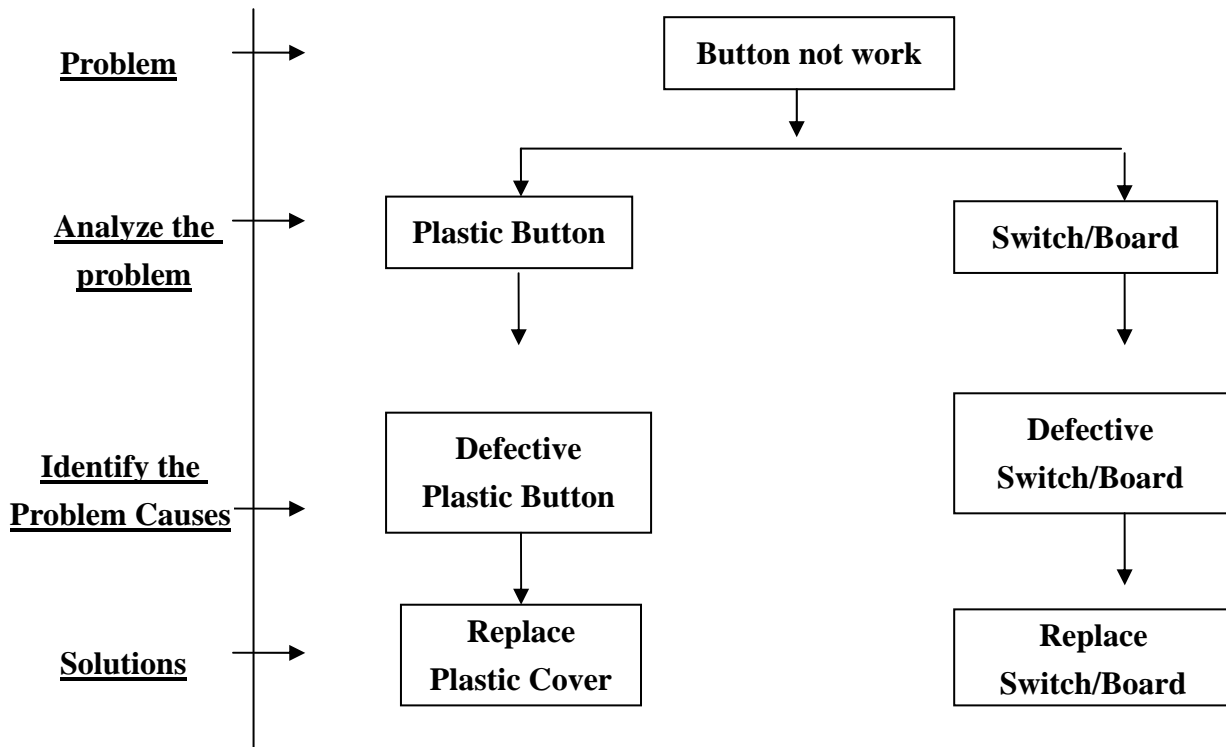
- No Image



● Noise



● Button not work



- **Others**

**There are some other problems, such as Broken of the Reflection Mirror and the Document Glass, etc.. Please refer to the related chapters for solving these problems.**

## Chapter 2.

# Assembly and Disassembly

### How to Assembly and Disassembly Scanner

#### How to Assembly & Disassembly the Scanner

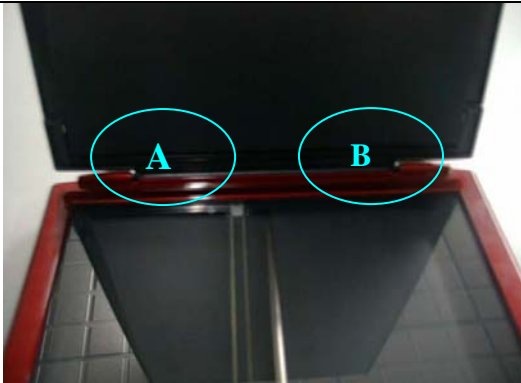


figure 1.1.1

#### Step 1

Paper cover rabbet A,B  
as shown in figure 1.1.1.



figure 1.1.2

#### Step 2

Bending the paper cover rabbet.  
Pull out the paper cover.  
as shown in figure 1.1.2.

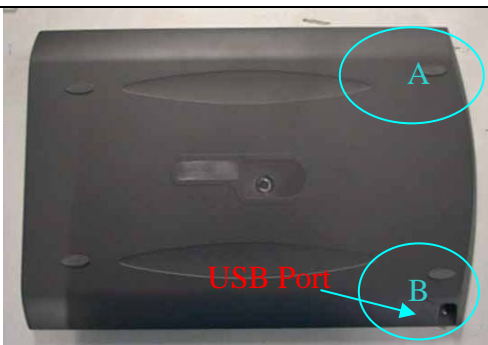
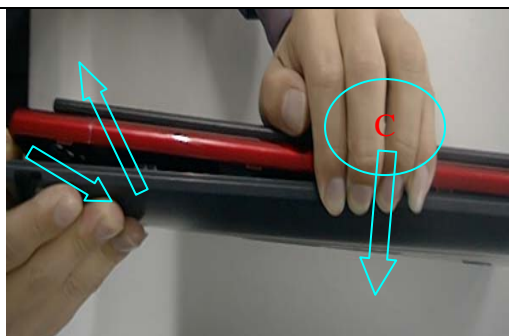


figure 1.1.3

#### Step 3

Tear off the rubber pad A,B  
Loosen the screw A,B.  
as shown in figure 1.1.3.

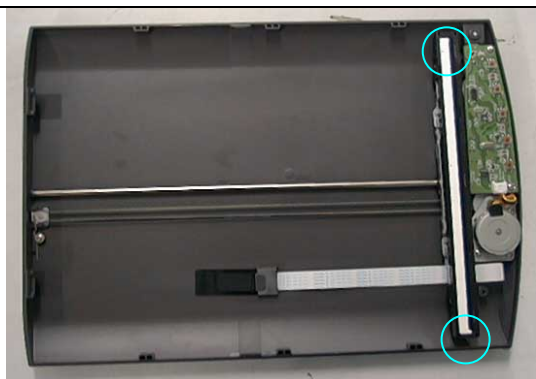


**figure 1.1.4****Step 4**

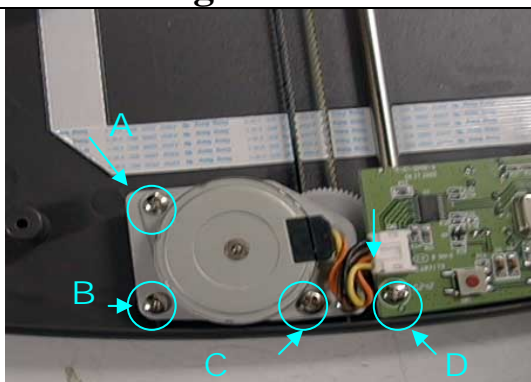
Use right hand to hold the scanner  
(USB port side)  
Press to separate the top cover and  
The base cover.  
as shown in figure 1.1.4.

**figure 1.1.5****Step 5**

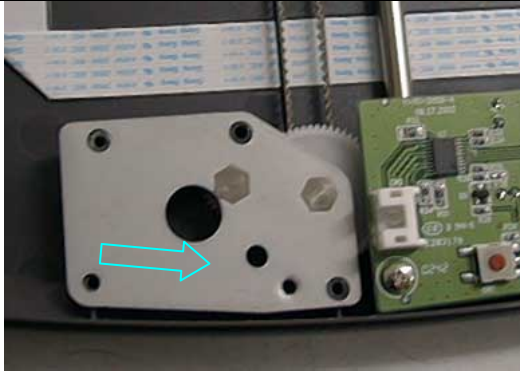
Use the left hand press the base  
Cover in the middle side. .  
The same way in another side.  
Then can take off the top cover away.  
as shown in figure 1.1.5.

**figure 1.1.6****Step 6**

When you take off the top cover .  
Please beware the focus roller.  
Don't let them lost.  
as shown in figure 1.1.6.

**figure 1.1.7****Step 7**

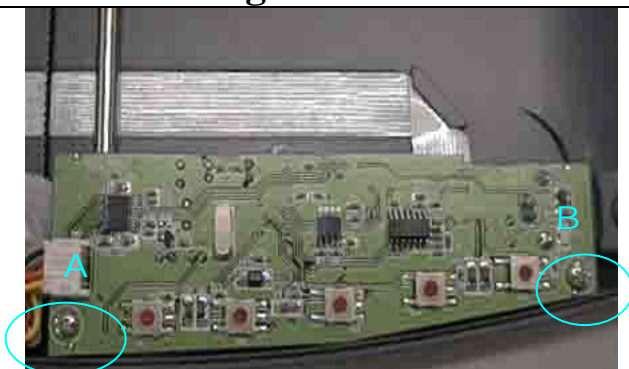
Loosen the 3 pcs screws A,B,C  
And pull out the connect wires. .  
then can take out the step motor  
and change it.  
as shown in figure 1.1.7.

**figure 1.1.8****Step 8**

Take out the gear plate..  
as shown in figure 1.1.8

**figure 1.1.9****Step 9**

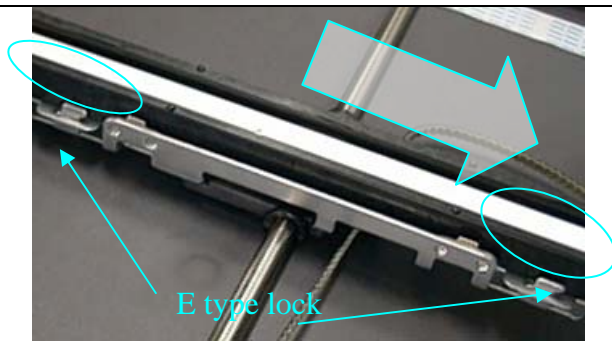
Take off the small gear first..  
Take out the plastic ring.  
Then you can change the big gear.  
as shown in figure 1.1.9

**figure 1.1.10****Step 10**

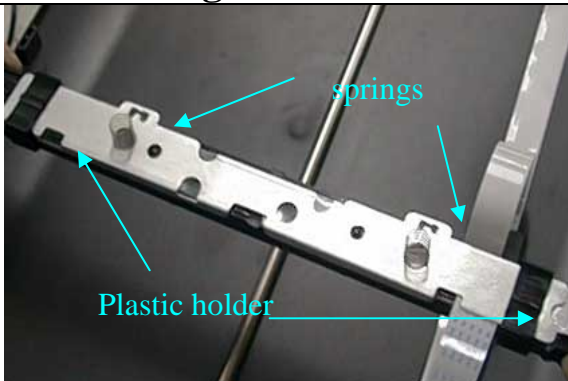
Loosen the 2 pcs screws A,B  
Then you can change the Scan board.  
as shown in figure 1.1.10

**figure 1.1.11****Step 11**

Before take out the FFC cable,  
Must pull out the connecior lock.  
Then can change the FFC Cable.  
as shown in figure 1.1.11

**figure 1.1.12****Step 12**

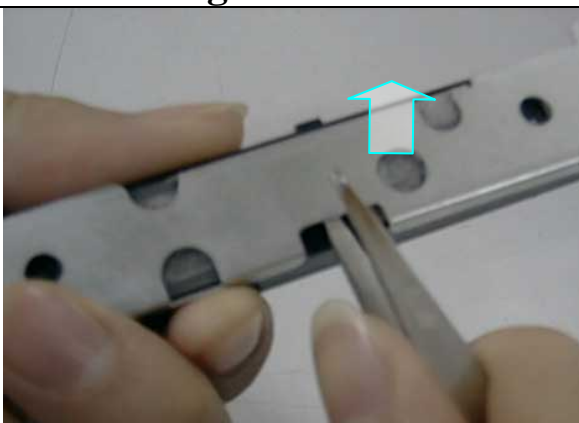
Beware the E type Lock holder,  
Then can take off the CIS sensor.  
as shown in figure 1.1.12

**figure 1.1.13****Step 13**

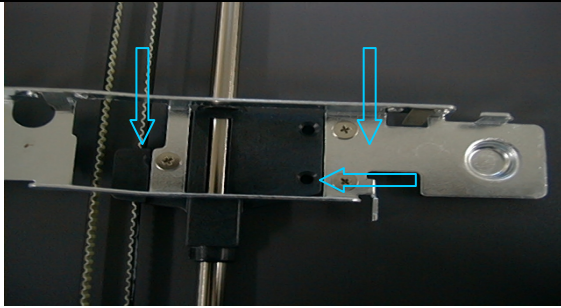
Take off the springs and black  
plastic holder.  
as shown in figure 1.1.13

**figure 1.1.14****Step 14**

Take off the black plastic holder.  
as shown in figure 1.1.14

**figure 1.1.15****Step 15**

Use forceps to take off the CIS  
Plate holder.  
as shown in figure 1.1.15

**figure 1.1.16****Step 16**

Loosen the cross screw on the plate holder.

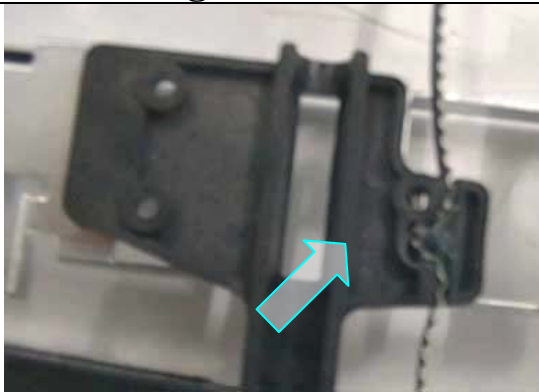
as shown in figure 1.1.16

**figure 1.1.17****Step 17**

Beware the CIS sensor back .

Must assembly into the CIS holder line.

as shown in figure 1.1.17

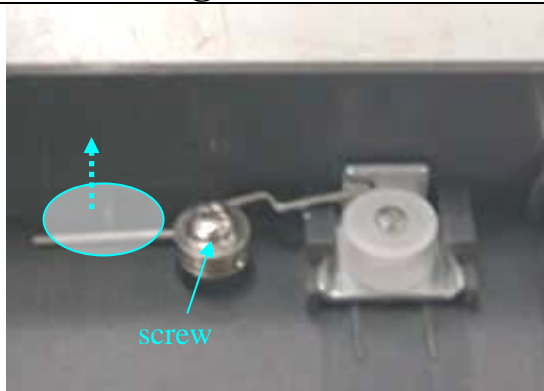
**figure 1.1.18****Step 18**

Use alcohol onto the belt.

Let the green glue melt.

Then can change the belt.

as shown in figure 1.1.18

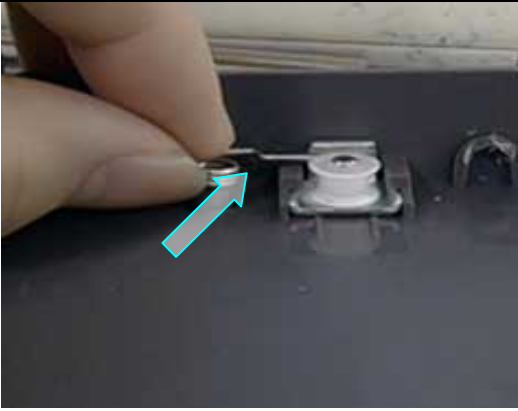
**figure 1.1.19****Step 19**

Before take the stand-wheel.

Must loosen the screw first.

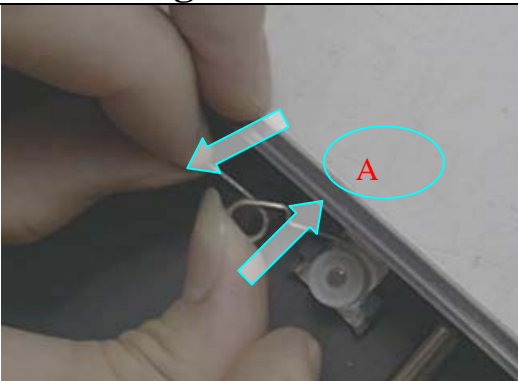
as shown in figure 1.1.19



**figure 1.1.20****Step 20**

Take out the twist spring.

Then, you can change the stand-wheel.  
as shown in figure 1.1.20

**figure 1.1.21****Step 21**

Assembly the stand-wheel.

Must let the spring press onto the  
stand-wheel.

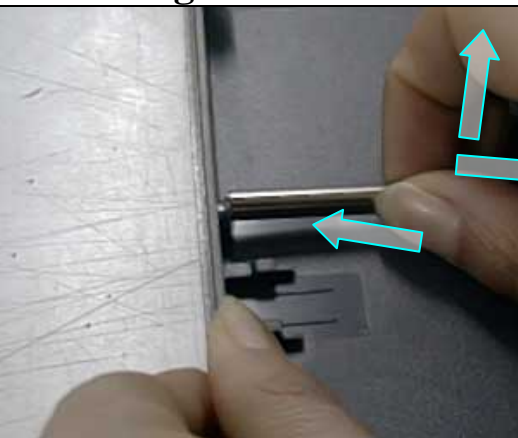
as shown in figure 1.1.21

**figure 1.1.22****Step 22**

There is a spring to control the shaft.

Hold the shaft and press it..

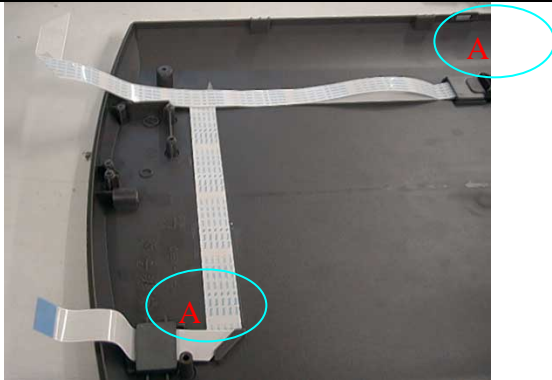
as shown in figure 1.1.22

**figure 1.1.23****Step 23**

Use left hand to press the base cover.

Right hand hold the shaft and pull  
back .

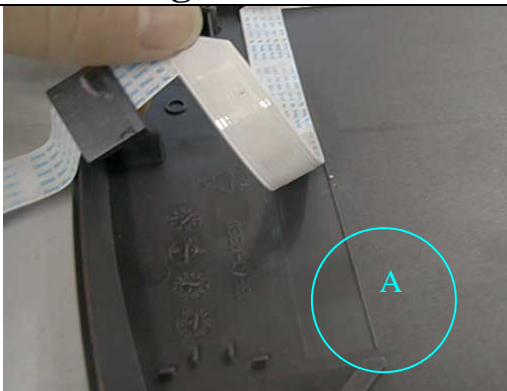
as shown in figure 1.1.23

**figure 1.1.24****Step 24**

How to disassembly the FFC cable.  
as shown in figure 1.1.24

**figure 1.1.25****Step 25**

Use forceps to take off the EMI core.  
as shown in figure 1.1.25

**figure 1.1.26****Step 26**

Tear off the FFC cable,  
Beware the twin-adhesive.  
Must clean on the base cover.  
as shown in figure 1.1.26

**figure 1.1.27****Step 27**

Beware don't damage the FFC cable.  
as shown in figure 1.1.27

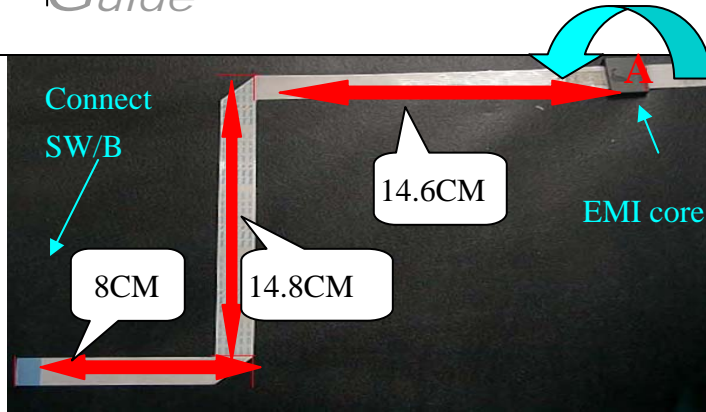


figure 1.1.28

**Step 28**

How to replacement the FFC cable.  
as shown in figure 1.1.28

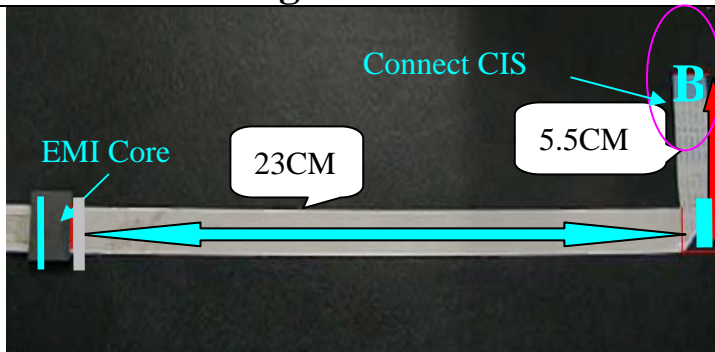


figure 1.1.29

**Step 29**

as shown in figure 1.1.29

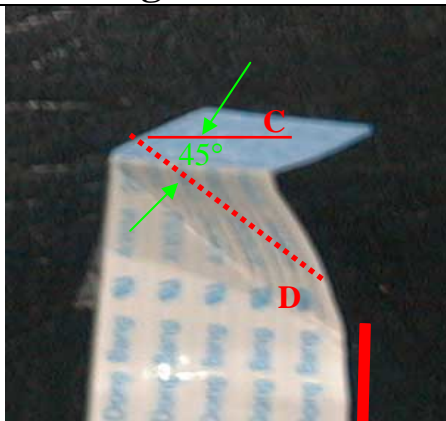


figure 1.1.30

**Step 30**

Connect B,connect CIS  
sensor.  
as shown in figure 1.1.30



figure 1.1.31

**Step 31**

Connect B,connect CIS  
sensor.  
as shown in figure 1.1.31

## Chapter 3. Important Notes

### Packing requirement for sending the PCB assembly

PCB assembly is a kind of sophisticated electronic circuit board. A scanner mainly includes the following items: Scan Board, CIS Module, Switch Board, Panel Board, etc.. Therefore, well packing will be required when sending them by post or courier.

1. Some sophisticated IC components are mounted on the PCB assembly, hence it is necessary to pack each PCB assembly with a separate static protecting beg, in order to avoid static electricity.
2. CIS sensor is the most important component on the CIS Module, hence, CIS sensor must be covered by a protecting bag when mailing it, in order to prevent from scratch.
3. Reliable external packing is also very important when sending the PCB assembly by post, in that it would avoid unnecessarily lost or damage.

### Short of spare parts while repairing a scanner

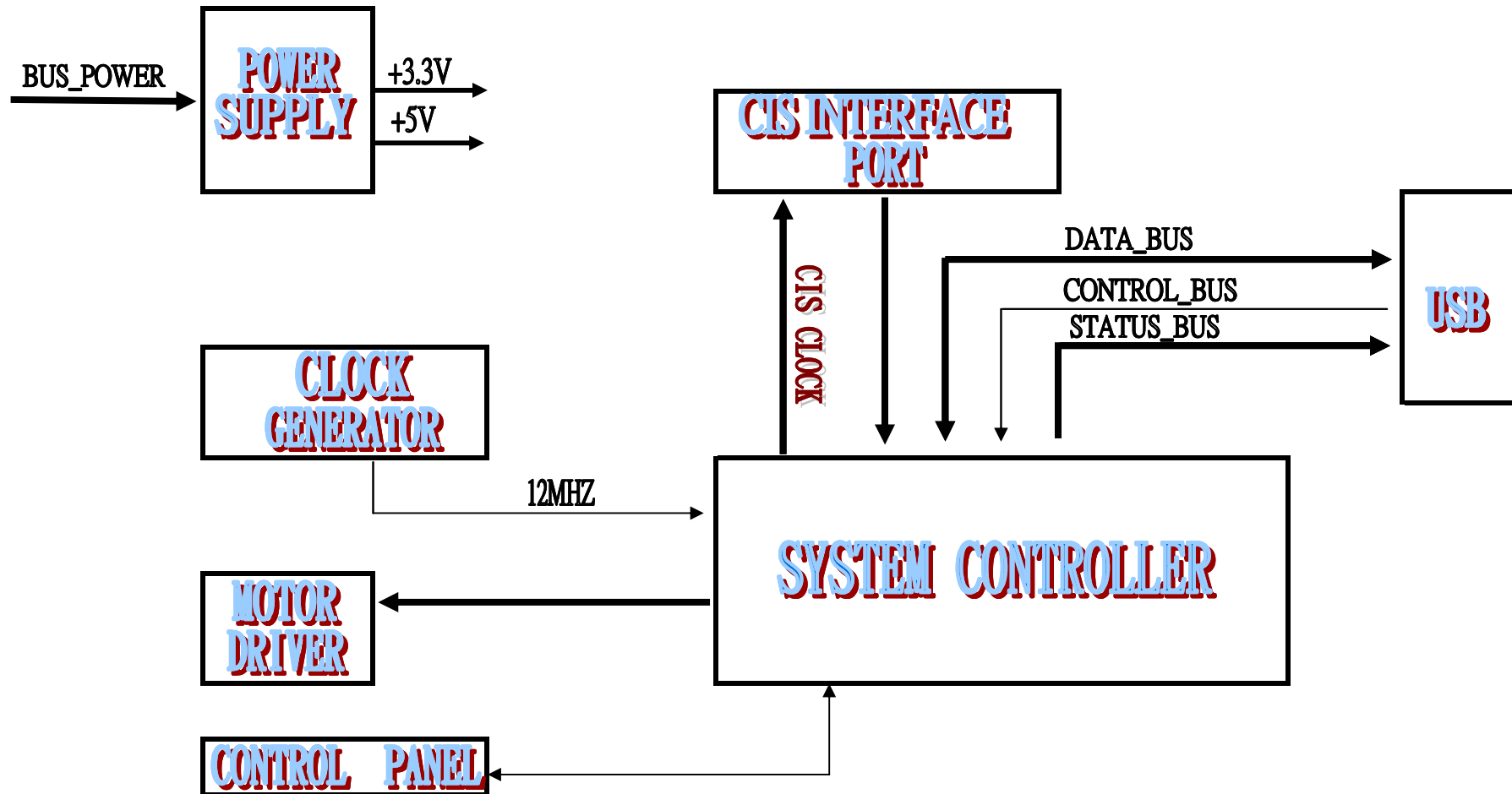
If you are short of spare parts when you have some scanners waiting to be repaired, it would be recommended to take the necessary parts from one scanner, so that you may have the as many as scanners be repaired and sent back to your customer, and left only one or few scanners waiting for spare parts sending from manufacture.



## Part List of Repairing

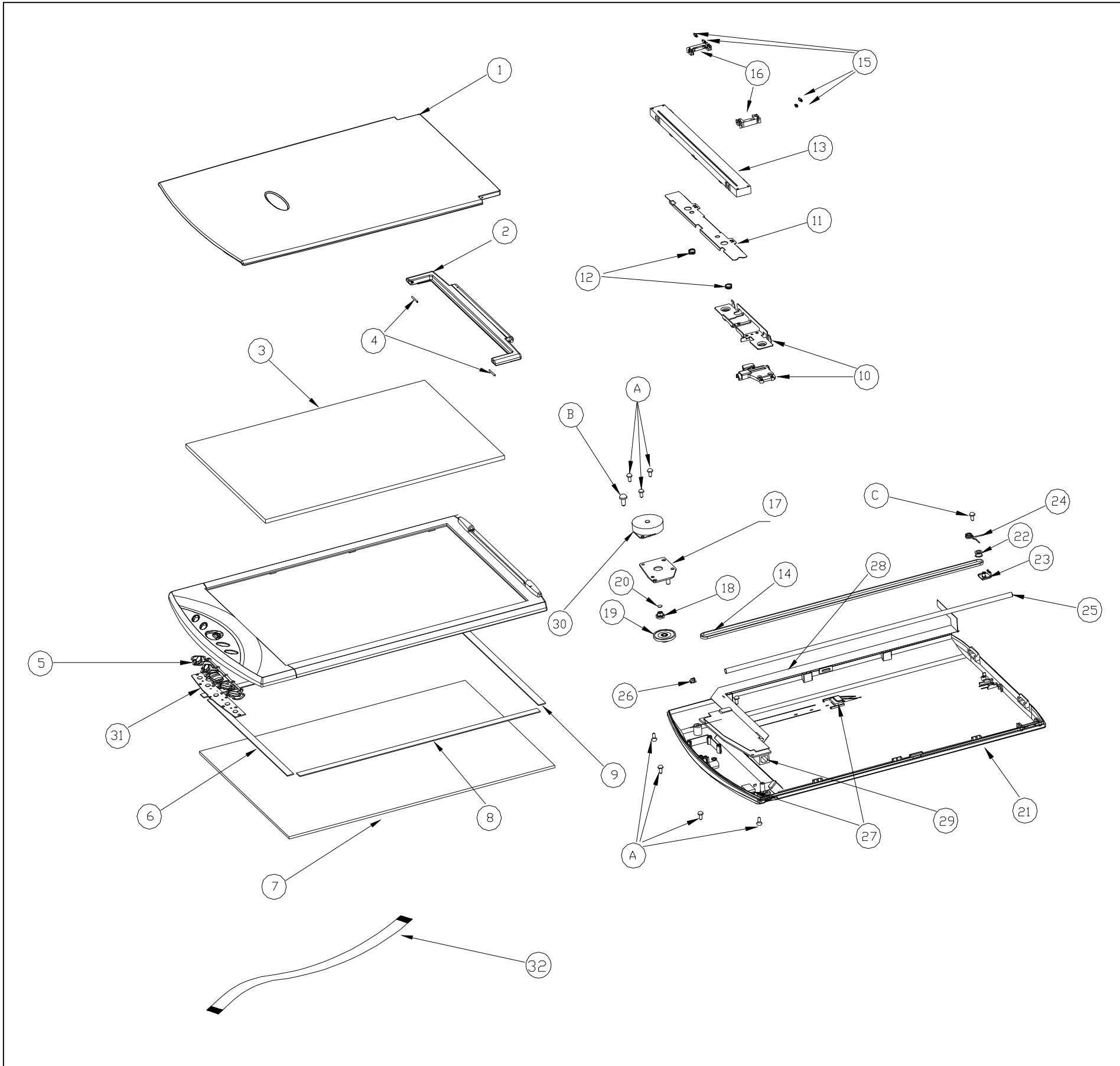
Item	Part No.	Description	KYE NO.	Remark
1	12-06-060-A	FFC 7PIN 58mm	15400038100	
2	12-06-128-A	FFC 12PIN 660mm+aluminum foil	15400039100	
3	13-01-07161-B	TIMING BELT 350*2.4	15420010100	
4	14-04-059-B	MOTOR	10190013100	
5	15-A1-A2871-A	CIS Fixture	15220011101	sets order
6	16-11-012-B	CIS	10140004100	
7	13-B9-T2031-A	Isolation Mylar	N/A	
8	23-719-0911-TSB	Scanner Board Assembly	20200032101	
9	23-719-0930-TSB	Switch Board Assembly	20200036101	

# PLUSTEK INC.



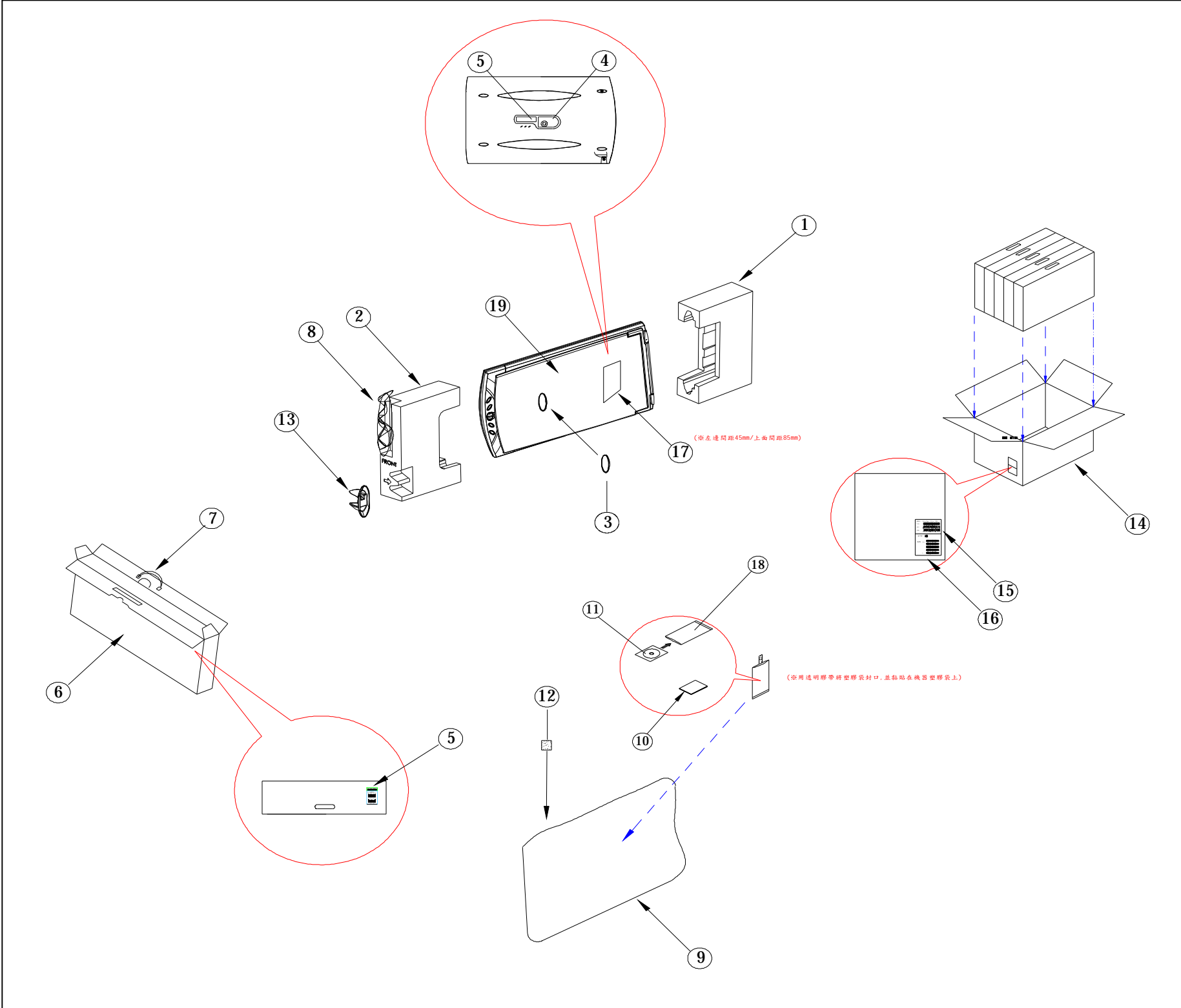
**Flatbed Scanner System Block Diagram  
For Moldel No. Color Page Slim 1200 USB2**

Slim 1200 USB 2 explored map



ColorPage-Slim 1200 USB2(719-TSB-W1-A) : 25200023101				
Item	Part No.	Part Name	Pcs	K.NO
21-719-0014W1 paper cover process				25220023101
1	13-A1-A6502-C-A	paper cover	1	15100068100
2	13-A1-57002-C-A	cover hinge	1	15140073100
3	21-712-007011	sponge process	1	12160005100
4	15-A4-80011-A	shaft	2	15220005100
21-719-0017W1 upper case process				25220024101
5	21-719-001WW1	upper case with button process	1	25240020100
6	13-B9-T3011-A	white-blance-slice	1	12060104100
7	19-01-171-A	glass	1	15400005100
8	13-A7-Q3391-A	twin-adhesive	1/217	15400007100
9	13-A7-Q3411-A	twin-adhesive	1/29	15400008100
21-717-001Q11 CIS MOUNT PROCESS				25240021100
10	21-717-002E11	slide base process	1	15140014100
11	15-A1-A2871-A	CIS bracket	1	15220011101
12	15-A5-T7252-A	direct-spring	2	15230002100
13	16-11-012-B	CIS sensor	1	10140004100
14	13-01-07161-B	timing belt	1	15420010100
15	13-A2-B2062-B-A	focus roller	4	15140018101
16	13-A2-B8011-A	focus roller base	2	15140019100
21-717-006611 motor -plate process				25240022100
17	15-A1-A2971-A	motor -plate	1	15220025101
18	13-A2-A7631-A-A	gear B	1	15140074101
19	21-712-003512	belt wheel process	1	15450001100
20	13-B7-05031-A-A	plastic-washer	1	15190002100
Others				
21	21-719-0073W1	base frame process	1	25230010101
22	13-A2-A7591-A-A	stand-wheel	1	15140016100
23	15-A1-A2891-A	stand-wheel-fixer	1	15140017101
24	15-A5-T7272-A	belt with twist spring	1	15220008100
25	15-A4-R1221-A	shaft	1	15220009100
26	15-A5-T7281-A	spring for shaft	1	15220010100
27	03-07-031D-A	EMI CORE	2	15400006100
28	12-06-128-A	FFC wire with aluminum paste	1	15400039100
29	23-719-0911-TSB	scan board	1	20200032101
30	14-04-059-B	stepping motor	1	10190013100
31	23-719-0930-TSB	sw-board	1	20200036101
32	12-06-070-A	FFC wire 58mm	1	15400038100
A	15-01-01451-A	tapping screw	7	15430001100
B	15-01-01431-A	tapping screw	1	15430002100
C	15-01-04161-A	screw	1	15430003100
Remarks				
Version		V1.2		
Date		April,29.2004		

Slim 1200 USB 2 Explode Map



ColorPage-XXX/Slim 1200 USB2				
Item	Part No.	Part Name	PCS	K.NO
1	17-04-71431-0-A	Left Styrofoam	1	12130002101
2	17-04-71432-0-A	Right Styrofoam	1	12130001101
3	17-08-23W23-0-A	LOGO Sticker	1	15300008101
4	17-08-51W13-0-A	Safty Label	1	12040071100
5	17-08-45107-0-A	Serial Number Label	2	12060160100
6	17-03-719W1-0-A	Gift Box For Slim 1200 USB2	1	12000064100
7	17-C1-02003-A	Plastic Hand-belt , V1.0	1	
8	12-03-064-A	Cable USB2.0A-B_Ltype+2 CORE1500	1	15160053101
9	17-A1-01047-0-A	PE , 500*290*0.03mm	1	12200017100
10	17-07-2W511-0-A	Quick Guide	1	12030067100
11	22-719-0061W1	CD Software	1	24240011100
12	18-02-002-A	Drying Bag	1	N/A
13	21-719-0009W1	Stand Base	1	15400029101
14	17-02-01186-0-A	Carton	1/5	12100050101
15	17-08-4KW84-0-A	Barcode Label - Carton	N/A	12070504100
16	17-08-4KW86-0-A	Serial Number Label - Carton	1/5	N/A
17	17-08-6YW20-0-A	Label on Upper Cover	1	12060159100
18	17-A1-01037-0-A	PE Bag for quick guide	1	N/A
19	719-TSB-W1	Body (Slim1200 USB2)	1	25200023101
Remark		Slim 1200 USB 2 Explode Map		
Version		V1.0		
Date		Jan.06/2004		