

JVC Service Bulletin

| | | |
|---------------------------------|--|---|
| Model Refer to below. | Service Manual No. Refer to below. | Priority ()S. All product. ()A. Items in JVC / Dealer stock / Service return goods. ()B. JVC stock / Units returned for Service. ()C. Sold items returned for Service. (X)D. Only Units returned to this bulletin. ()E. Others. |
| Reference Information | | |

DATE : Nov. 27, 1997

SUBJECT :It may not work AUTO CH PRESET.

<Objective>

Please operate when the following symptom occur.

<Model & Service manual no.>

| Model | Service manual no. | Model | Service manual no. |
|------------|--------------------|------------|--------------------|
| AV-K29MX3 | 51224 | AV-B14M | 51254 |
| AV-K29MX1 | 51225 | AV-B14T | 51255 |
| AV-K21TR | 51246 | AV-1410EE | 51267 |
| AV-2130TEE | 51271 | AV-1430TEE | 51268 |
| AV-K21M | 51248 | AV-K25MX | 51282 |
| AV-B21M | 51252 | AV-K21MX | 51249 |
| AV-2110EE | 51269 | AV-K29MS1 | 51326 |
| AV-K21T | 51247 | AV-2950TEE | 51327 |
| AV-2130EE | 51270 | AV-K29MS3 | 51311 |
| AV-B21T | 51253 | AV-K21MS | 51312 |
| AV-K14TR | 51250 | AV-K25MS | 51320 |
| AV-K14M | 51260 | AV-2550TEE | 51328 |
| AV-K14T | 51259 | | |

<Symptom>

It may not work AUTO CH PRESET well noisy 49.75MHz channel only in its receiving area.

<Cause>

Malfunction of the IF IC when receiving the noisy 49.75MHz channel by AUTO CH PRESET.

<Countermeasures>

● Method 1

Please operate the MANUAL CH PRESET for the channel setting.

--Notice--

- ① At first, preset the 49.75MHz channel to program 1 by using down search(VOL - button).
- ② Secondly, preset the other channel by using up search(VOL + button).

● Method 2

- ① Operate the MANUAL CH PRESET.
Refer to above(Method 1).
- ② Add the resistor 220K Ω (P/N:QRD161J-224Y) to between pin 17 and pin 19 of IC101(M52342SP).
- ③ Delete the C117(680pF).
- ④ Enter to SERVICE MENU.(Refer to service manual.)
 - a) Select 1. IF
 - b) Select 1.VCO
- ⑤ Select the receivable VHF high channel by using the CHANNEL -/+ button.
(Example)
Select the 10ch by using the CHANNEL -/+ button.
- ⑥ The frequency XXX.XX MHz appears on screen.
Adjust the XXX.XX MHz to XXX.25MHz by using the MENU -/+ button.
(Example)
 - a) If 207.55MHz appears on screen.
 - b) Adjust the frequency from 207.55MHz to 207.25MHz by using the MENU -/+ button.
- ⑦ Adjustment of VCO TRANSF. (Refer to service manual.)
Adjust the description 4 to 7 of service manual.
- ⑧ Release from SERVICE MENU.
- ⑨ Confirm the AUTO CH PRESET function correctly.

<Affected serial number.>

| | | | |
|----------------|-----------|---|---------------|
| •AV-1410EE: | First set | ~ | 17203001 |
| •AV-1430TEE: | First set | ~ | 06303000 |
| •AV-2110EE: | First set | ~ | 16290000 |
| •AV-2130EE: | First set | ~ | 17203650 |
| •AV-2130TEE: | First set | ~ | 17202050 |
| •Other models: | First set | ~ | 162 * * * * * |

JVC Service Bulletin

| | | |
|---------------------------------|--|---|
| Model Refer to below. | Service Manual No. Refer to below. | Priority ()S. All product. ()A. Items in JVC / Dealer stock / Service return goods. ()B. JVC stock / Units returned for Service. ()C. Sold items returned for Service. (X)D. Only Units returned to this bulletin. ()E. Others. |
| Reference Information | | |

DATE : Nov. 27. 1997

SUBJECT :It may not work AUTO CH PRESET.

<Objective>

Please operate when the following symptom occur.

<Model & Service manual no.>

| Model | Service manual no. | Model | Service manual no. |
|------------|--------------------|------------|--------------------|
| AV-K29MX3 | 51224 | AV-B14M | 51254 |
| AV-K29MX1 | 51225 | AV-B14T | 51255 |
| AV-K21TR | 51246 | AV-1410EE | 51267 |
| AV-2130TEE | 51271 | AV-1430TEE | 51268 |
| AV-K21M | 51248 | AV-K25MX | 51282 |
| AV-B21M | 51252 | AV-K21MX | 51249 |
| AV-2110EE | 51269 | AV-K29MS1 | 51326 |
| AV-K21T | 51247 | AV-2950TEE | 51327 |
| AV-2130EE | 51270 | AV-K29MS3 | 51311 |
| AV-B21T | 51253 | AV-K21MS | 51312 |
| AV-K14TR | 51250 | AV-K25MS | 51320 |
| AV-K14M | 51260 | AV-2550TEE | 51328 |
| AV-K14T | 51259 | | |

<Symptom>

It may not work AUTO CH PRESET well noisy 49.75MHz channel only in its receiving area.

<Cause>

Malfunction of the IF IC when receiving the noisy 49.75MHz channel by AUTO CH PRESET.

<Countermeasures>

● Method 1

Please operate the MANUAL CH PRESET for the channel setting.

--Notice--

- ① At first, preset the 49.75MHz channel to program 1 by using down search(VOL - button).
- ② Secondly, preset the other channel by using up search(VOL + button).

● Method 2

- ① Operate the MANUAL CH PRESET.
Refer to above(Method 1).
- ② Add the resistor 220K Ω (P/N:QRD161J-224Y) to between pin 17 and pin 19 of IC101(M52342SP).
- ③ Delete the C117(680pF).
- ④ Enter to SERVICE MENU.(Refer to service manual.)
 - a) Select 1. IF
 - b) Select 1.VCO
- ⑤ Select the receivable VHF high channel by using the CHANNEL -/+ button.
(Example)
Select the 10ch by using the CHANNEL -/+ button.
- ⑥ The frequency XXX.XX MHz appears on screen.
Adjust the XXX.XX MHz to XXX.25MHz by using the MENU -/+ button.
(Example)
 - a) If 207.55MHz appears on screen.
 - b) Adjust the frequency from 207.55MHz to 207.25MHz by using the MENU -/+ button.
- ⑦ Adjustment of VCO TRANSF. (Refer to service manual.)
Adjust the description 4 to 7 of service manual.
- ⑧ Release from SERVICE MENU.
- ⑨ Confirm the AUTO CH PRESET function correctly.

<Affected serial number.>

- AV-1410EE: First set ~ 17203001
- AV-1430TEE: First set ~ 06303000
- AV-2110EE: First set ~ 16290000
- AV-2130EE: First set ~ 17203650
- AV-2130TEE: First set ~ 17202050
- Other models: First set ~ 162*****

12/5 (JAS)下野 2部 AirMail済
12/9 (JMO)堤 2部
本屋G長ハナカサリ

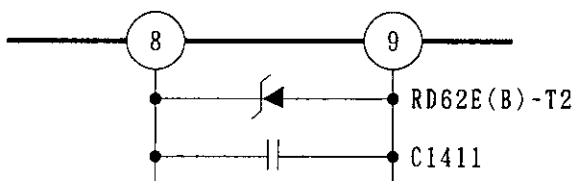
| パ-ツ責任者 | 技術責任者 | 品保責任者 | 発行担当者 |
|--------|-------------------------|----------------------------|-----------------------------|
| 9.12.- | (子技一)長 9.12.05 小島 | (子品保)品保G長 9.12.05 本尾 | (子品保)技術 9.12.-5 宮本(物) |

NOTICE

1. Affected Models : AV-29SX1EK AV-29SX1EN AV-29SX1ENI AV-29SX1PF AV-29TS1EN

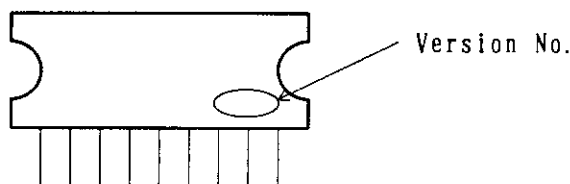
Please modify the following to improve reliability.

- ① Change the IC1401 to new IC and spread the SILICON GREASE(G746TS) on heat sink of IC1401.
 ※ In the case of C1402 is 100pF. Change to 4700pF(QCY31HK-472AZ).
- ② Change the FR1553 QRH127J-5R6M to QRH017J-180M.
- ③ Add the C1411(printed the symbol number on PWB) to QFLC2AK-103MZ.
- ④ Add the C1407(printed the symbol number on PWB) to QFLC2AK-103MZ.
 ※ AV-29SX1PF is already added this capacitor.
- ⑤ Change the R1560 QRG019J-332S to QRG019J-222S.
- ⑥ Add Zener diode RD62E(B)-T2 to between pin ⑧ and ⑨ of IC1401



2. Other models.

Please conform the IC's version(refer to following) when change this IC(TDA8350Q).



- ① In case of Version 3
 Change the C402 from 100pF to 4700pF(QCY31HK-472AZ).
- ② In case of Version 4 or Version 5
 Change the IC only.

3. Parts list.

| Parts kit No. | Includes parts No. | Part name | Qty |
|---------------|--------------------|-------------------|-----|
| TPCE-0051 | QRH017J-180M | F. Resistor | 1 |
| | QFLC2AK-103MZ | Capacitor | 2 |
| | QRG019J-222S | Resistor | 1 |
| | RD62E(B)-T2 | Diode | 1 |
| | TDA8350Q | IC | 1 |
| | QCY31HK-472AZ | Capacitor | 1 |
| | SETSUMEISY028 | Instruction sheet | 1 |

※ Silicon Grease(G746TS) is not included this kit.