

SERVICE MANUAL

PORTABLE DVD VIDEO PLAYER

SERVICE MANUAL

PORTABLE DVD VIDEO PLAYER



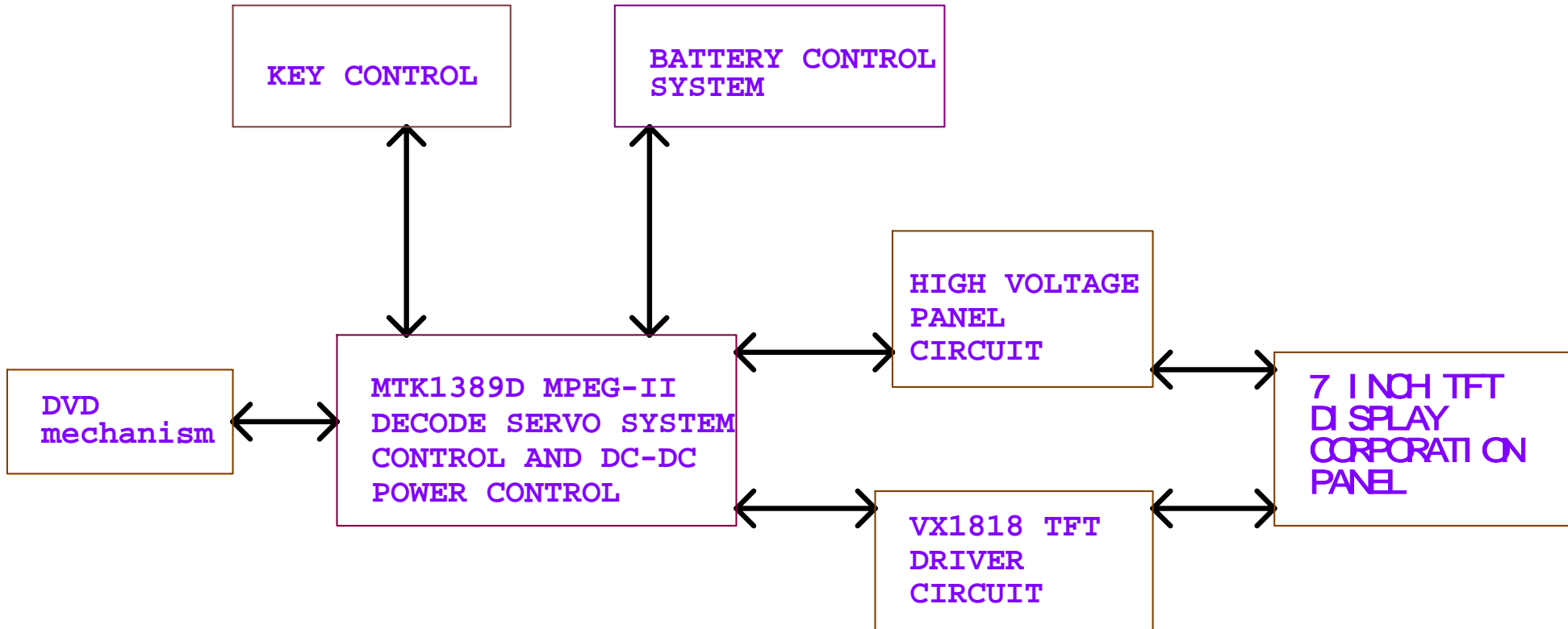
MODEL
DVP-705



CONTENTS

	PAGE
UNIT CIRCUIT BLOCK DIAGRAM	2
MPEG-II AND DC-DC CONTROL	3 - 15
TFT DRTVER	16 - 24
KEY CONTROL	25 - 28
HIGH VOLTAGE CIRCUIT	29 - 32
BATTERY CONTROL	33 - 37
CABINET EXPLODED VIEW	38
CABINET EXPLODED VIEW PARTS LIST	39 - 40

CIRCUIT BLOCK DIAGRAM



Design Create Date

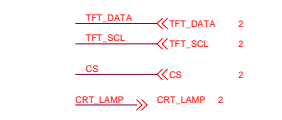
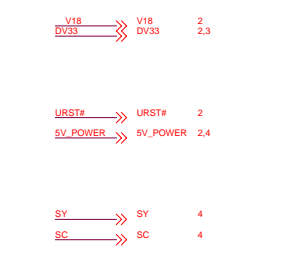
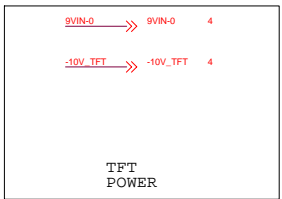
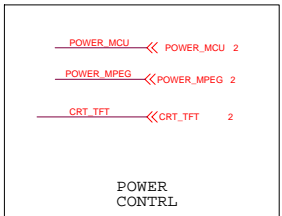
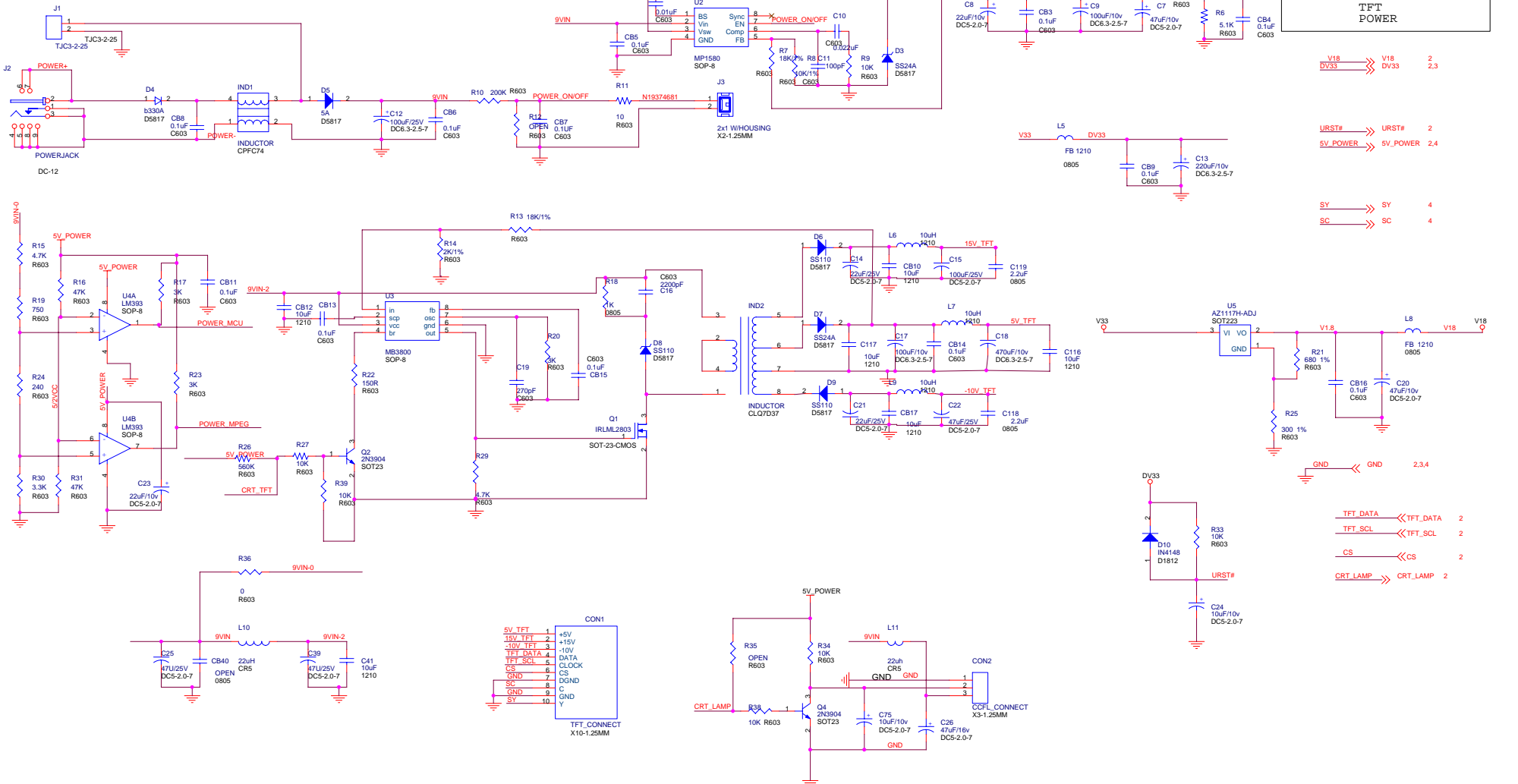
Title
CIRCUIT BLOCK DIAGRAM

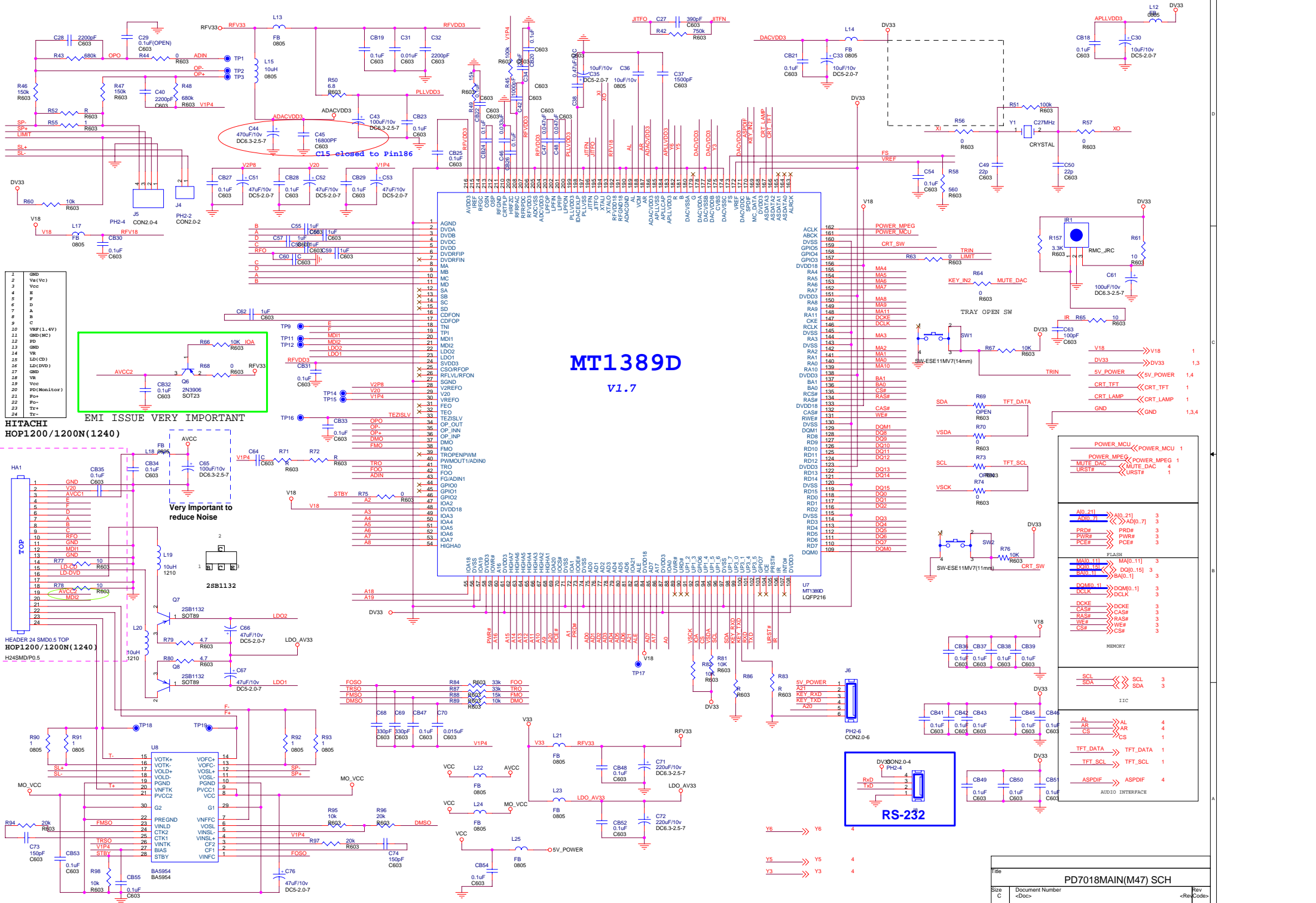
Size A	Document Number <Doc>	Rev 1
-----------	--------------------------	----------

Date: Sheet 1 of 1

- 1 INDEX & POWER, RESET
- 2 SERVO & MPEG - MT1389D
- 3 MEMORY - SDRAM, FLASH/EEPROM
- 4 AUDIO PORT

NAME	TYPE	DEVICE
5V_POWER	Digital 5V	SUPPLY
RVCC	Servo 3.3V	MT1336E
AVCC	RF5V	PICKUP HEADER
V33	Digital 3.3V	SDRAM, Flash VideoDAC Servo
DV33	Digital 3.3V	MT1379E
AV33	Servo 3.3V	MT1379E
V25	Digital 2.5V	MT1379E
VCC	Audio 5V	Audio DAC, filter Servo





MT1389D

V1.7

HITACHI
HOP1200/1200N(1240)

HEADER 24 SMD0.5 TOP
HOP1200/1200N(1240)

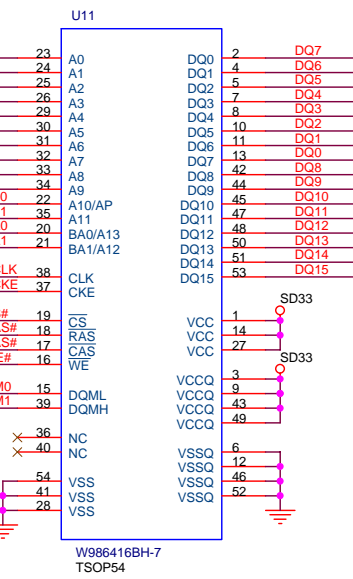
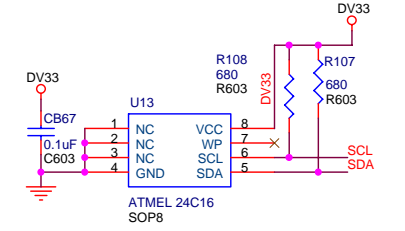
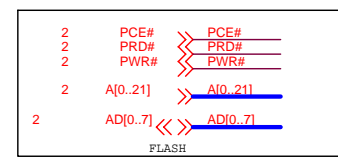
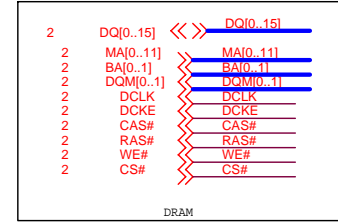
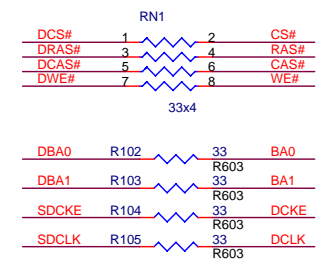
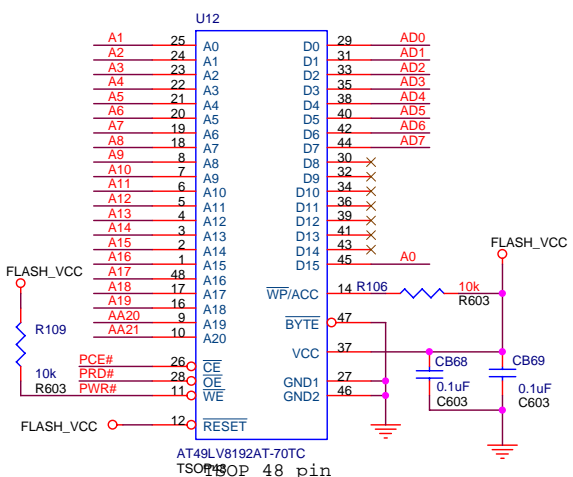
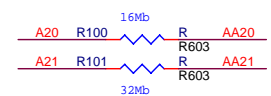
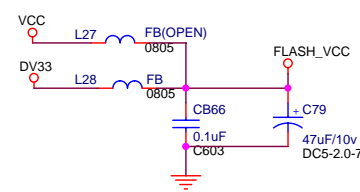
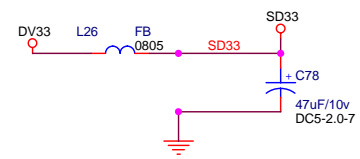
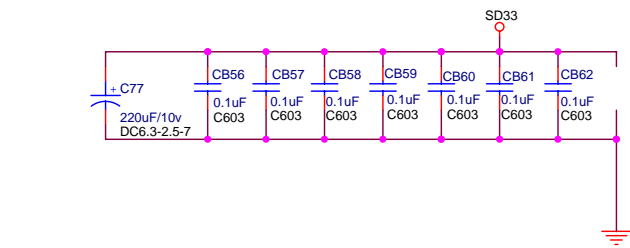
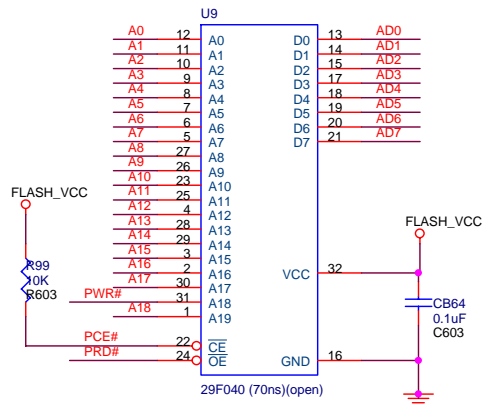
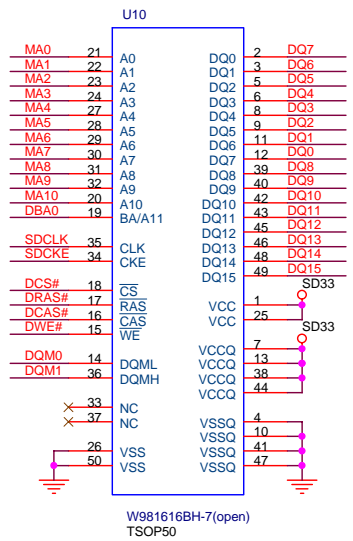
H24SMD/P0.5

2	GNL
3	Va(Vcc)
4	Vcc
5	F
6	A
7	P
8	B
9	C
10	V8P(1.4V)
11	GNL(MC)
12	Vcc
13	GNL
14	V8
15	LD(CD)
16	LD(PWD)
17	V8
18	Vcc
19	Vcc
20	V8(Monitor)
21	Fo+
22	Te+
23	Te-
24	Te-

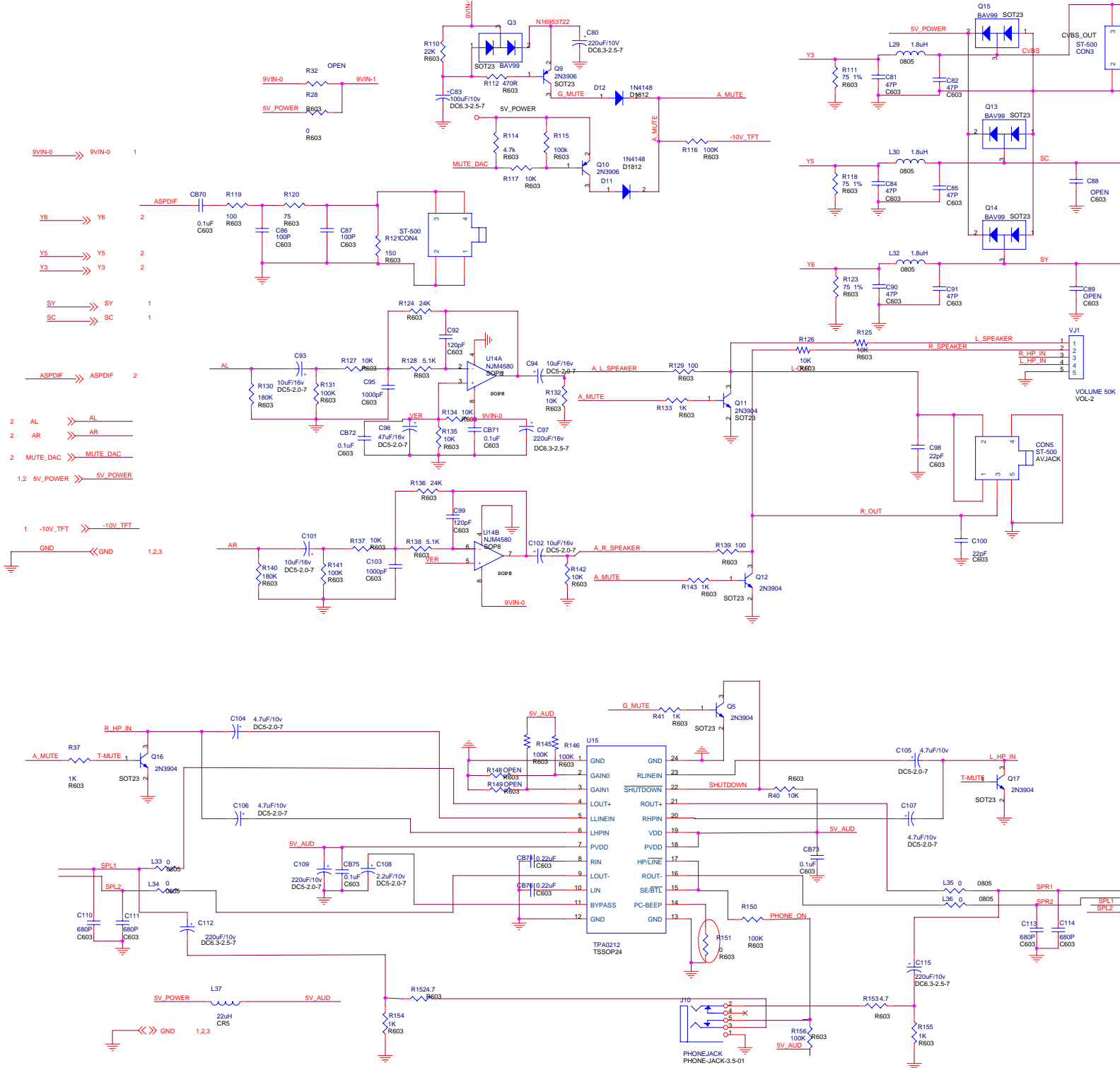
EMI ISSUE VERY IMPORTANT

Very Important to reduce Noise

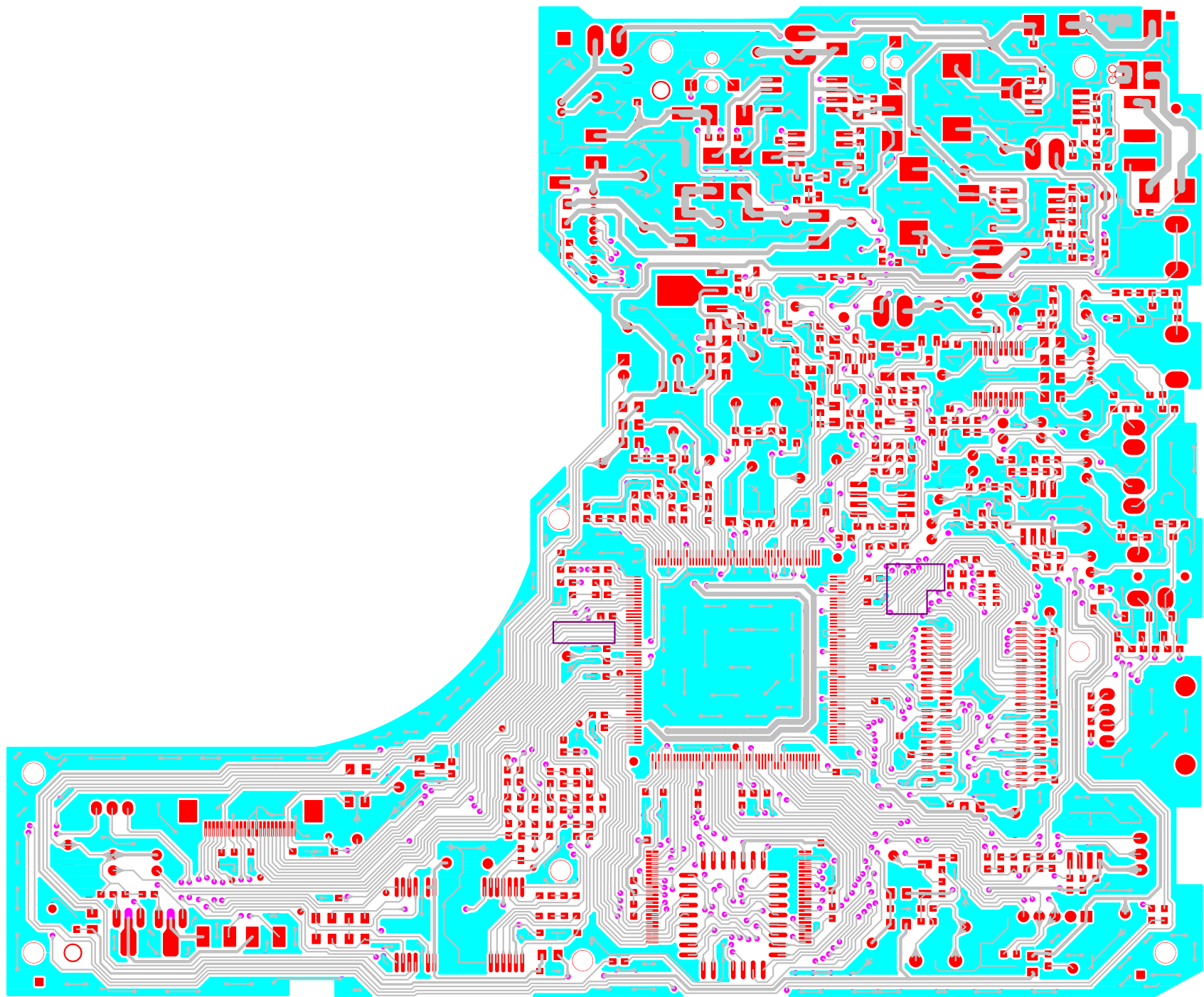
File	PD7018MAIN(M47) SCH		Rev	
Size	Document Number		<Rev Code>	
C	<Doc>			
Date	Monday, June 06, 2005	Sheet	2	of 4

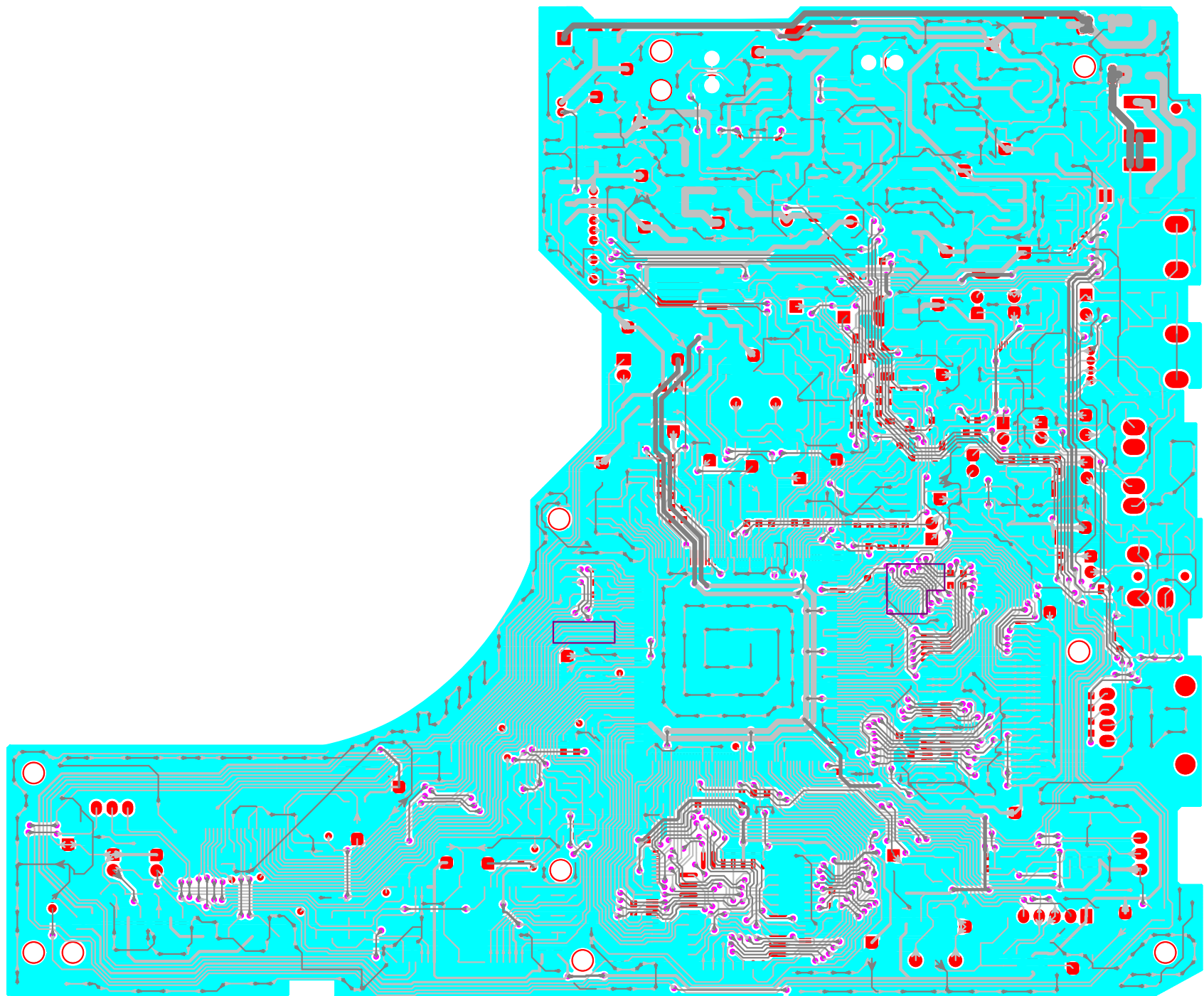


MediaTek Incorporation		
Title PD7018MAIN(M47) SCH		
Size B	Document Number SDRAM&FLASH	Rev 3
Date: Monday, June 06, 2005	Sheet 3	of 4



PD7018MAIN(M47) SCH		
Size	Document Number	Rev
C	PD560 V1.0 RELEASE	V1.0
Date:	Monday, June 06, 2005	Sheet 4 of 4





Part Reference	Value	Quantity	Part Reference	Value	Quantity
C1	0.01uF	1	C51	47uF/10v	1
C2	22uF/10v	1	C52	47uF/10v	1
C3	47uF/10v	1	C53	47uF/10v	1
C4	0.022uF	1	C54	0.1uF	1
C5	100pF	1	C55	1uF	1
C6	0.01uF	1	C56	1uF	1
C7	47uF/10v	1	C57	1uF	1
C8	22uF/10v	1	C58	1uF	1
C9	100uF/10v	1	C59	1uF	1
C10	0.022uF	1	C60	C	1
C11	100pF	1	C61	100uF/10v	1
C12	100uF/25V	1	C62	1uF	1
C13	220uF/10v	1	C63	100pF	1
C14	22uF/25V	1	C64	C	1
C15	100uF/25V	1	C65	100uF/10v	1
C16	2200pF	1	C66	47uF/10v	1
C17	100uF/10v	1	C67	47uF/10v	1
C18	470uF/10v	1	C68	330pF	1
C19	270pF	1	C69	330pF	1
C20	47uF/10v	1	C70	0.015uF	1
C21	22uF/25V	1	C71	220uF/10v	1
C22	47uF/25V	1	C72	220uF/10v	1
C23	22uF/10v	1	C73	150pF	1
C24	10uF/10v	1	C74	150pF	1
C25	47U/25V	1	C75	10uF/10v	1
C26	47uF/16v	1	C76	47uF/10v	1
C27	390pF	1	C77	220uF/10v	1
C28	2200pF	1	C78	47uF/10v	1
C29	0.1uF(OPEN)	1	C79	47uF/10v	1
C30	10uF/10v	1	C80	220uF/10V	1
C31	0.01uF	1	C81	47P	1
C32	2200pF	1	C82	47P	1
C33	10uF/10v	1	C83	100uF/10v	1
C34	20pF	1	C84	47P	1
C35	10uF/10v	1	C85	47P	1
C36	10uF/10v	1	C86	100P	1
C37	1500pF	1	C87	100P	1
C38	0.47uF/N.C	1	C88	OPEN	1
C39	47U/25V	1	C89	OPEN	1
C40	2200pF	1	C90	47P	1
C41	10uF	1	C91	47P	1
C42	1000pF	1	C92	120pF	1
C43	100uF/10v	1	C93	10uF/16v	1
C44	470uF/10v	1	C94	10uF/16v	1
C45	16800PF	1	C95	1000pF	1

C46	0.033uF	1	C96	47uF/16v	1
C47	0.047uF	1	C97	220uF/16v	1
C48	0.047uF	1	C98	22pF	1
C49	22p	1	C99	120pF	1
C50	22p	1	C100	22pF	1
C101	10uF/16v	1	CB1	0.1uF	1
C102	10uF/16v	1	CB2	0.1uF	1
C103	1000pF	1	CB3	0.1uF	1
C104	4.7uF/10v	1	CB4	0.1uF	1
C105	4.7uF/10v	1	CB5	0.1uF	1
C106	4.7uF/10v	1	CB6	0.1uF	1
C107	4.7uF/10v	1	CB7	0.1uF	1
C108	2.2uF/10v	1	CB8	0.1uF	1
C109	220uF/10v	1	CB9	0.1uF	1
C110	680P	1	CB10	10uF	1
C111	680P	1	CB11	0.1uF	1
C112	220uF/10v	1	CB12	10uF	1
C113	680P	1	CB13	0.1uF	1
C114	680P	1	CB14	0.1uF	1
C115	220uF/10v	1	CB15	0.1uF	1
C116	10uF	1	CB16	0.1uF	1
C117	10uF	1	CB17	10uF	1
C118	2.2uF	1	CB18	0.1uF	1
C119	2.2uF	1	CB19	0.1uF	1
C120	OPEN	1	CB20	0.1uF	1
CB21	0.1uF	1	CB51	0.1uF	1
CB22	0.1uF	1	CB52	0.1uF	1
CB23	0.1uF	1	CB53	0.1uF	1
CB24	0.1uF	1	CB54	0.1uF	1
CB25	0.1uF	1	CB55	0.1uF	1
CB26	0.1uF	1	CB56	0.1uF	1
CB27	0.1uF	1	CB57	0.1uF	1
CB28	0.1uF	1	CB58	0.1uF	1
CB29	0.1uF	1	CB59	0.1uF	1
CB30	0.1uF	1	CB60	0.1uF	1
CB31	0.1uF	1	CB61	0.1uF	1
CB32	0.1uF	1	CB62	0.1uF	1
CB33	0.1uF	1	CB64	0.1uF	1
CB34	0.1uF	1	CB66	0.1uF	1
CB35	0.1uF	1	CB67	0.1uF	1
CB36	0.1uF	1	CB68	0.1uF	1
CB37	0.1uF	1	CB69	0.1uF	1
CB38	0.1uF	1	CB70	0.1uF	1
CB39	0.1uF	1	CB71	0.1uF	1
CB40	OPEN	1	CB72	0.1uF	1

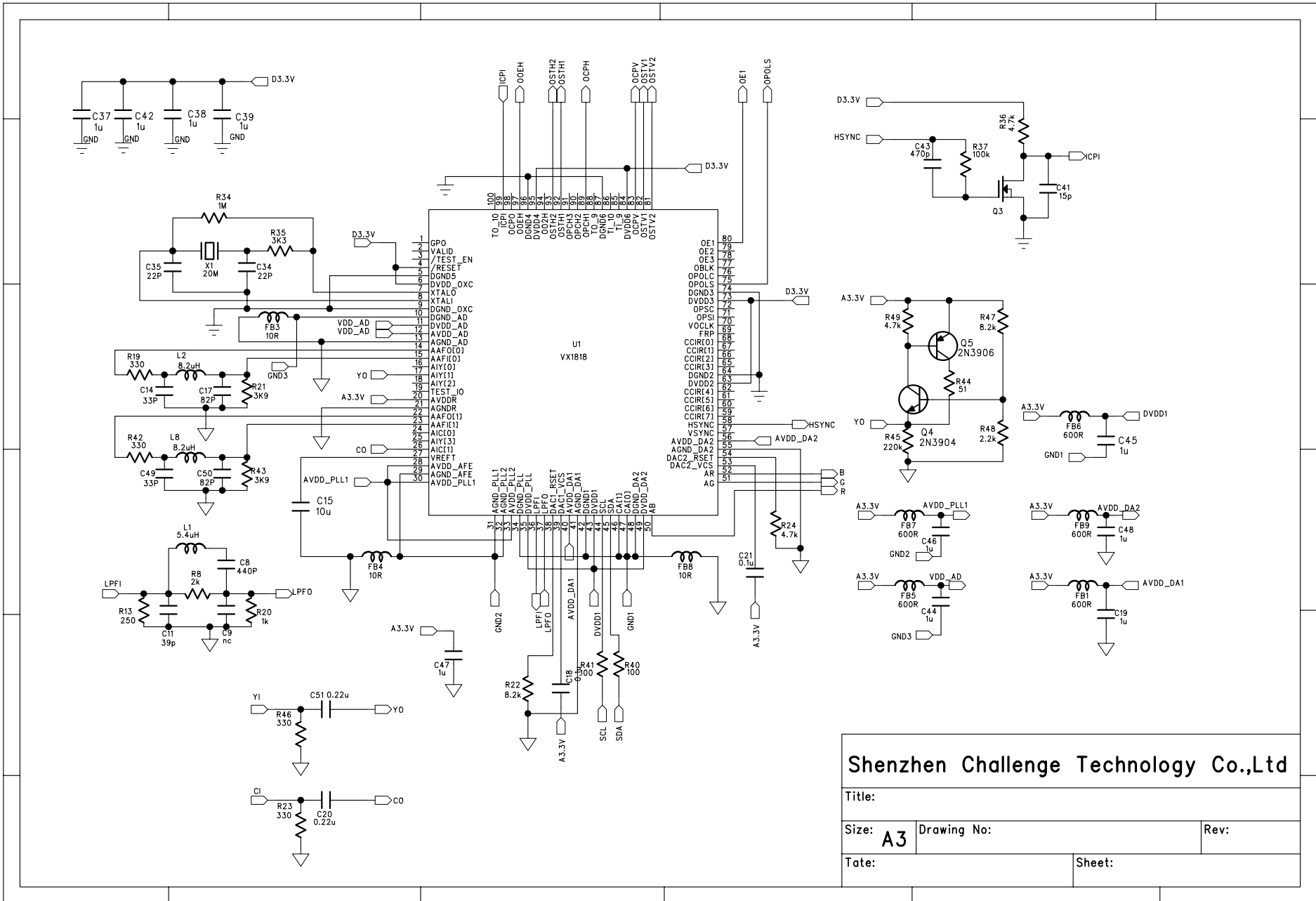
CB41	0.1uF	1	CB73	0.1uF	1
CB42	0.1uF	1	CB74	0.22uF	1
CB43	0.1uF	1	CB75	0.1uF	1
CB45	0.1uF	1	CB76	0.22uF	1
CB46	0.1uF	1			
CB47	0.1uF	1			
CB48	0.1uF	1			
CB49	0.1uF	1			
CB50	0.1uF	1			

CON1	10PIN/1.25/SOJ	1	L1	22uH	1
CON2	3PIN/1.25/SOJ	1	L2	6.8uH	1
CON3	SH-321	1	L3	22uH	1
CON4	SH-321	1	L4	6.8uH	1
CON5	CKx3-3.5-016	1	L5	FB 1210	1
D1	SS24A	1	L6	10uH	1
D2	DIODE	1	L7	10uH	1
D3	SS24A	1	L8	FB 1210	1
D4	b330A	1	L9	10uH	1
D5	5A	1	L10	22uH	1
D6	SS110	1	L11	22uh	1
D7	SS24A	1	L12	FB	1
D8	SS110	1	L13	FB	1
D9	SS110	1	L14	FB	1
D10	IN4148	1	L15	10uH	1
D11	1N4148	1	L17	FB	1
D12	1N4148	1	L18	FB	1
HA1ER	24 SMD0.5 TOP	1	L19	10uH	1
IND1	CPFC74	1	L20	10uH	1
IND2	CLQ7D37-8	1	L21	FB	1
IR1	AT138BV3	1	L22	FB	1
J1	TJC3-2-25	1	L23	FB	1
J2	DC-006B- Ç 1.35	1	L24	FB	1
J3	2PIN/1.25/SOJ	1	L25	FB	1
J4	PH2-2	1	L26	FB	1
J5	PH2-4	1	L27	FB(OPEN)	1
J6	PH2-6	1	L28	FB	1
J8	PH2-4	1	L29	1.8uH	1
J9	PH2-4	1	L30	1.8uH	1
J10	CKx-035-304	1	L32	1.8uH	1
			L33	0	1
			L34	0	1
			L35	0	1
			L36	0	1
			L37	22uH	1

Q1	IRLML2803	1	R1	330	1
Q2	2N3904	1	R2	30.9K/1%	1
Q3	BAV99	1	R3	10K/1%	1
Q4	2N3904	1	R4	10K	1
Q5	2N3904	1	R5	1K	1
Q6	2N3906	1	R6	5.1K	1
Q7	2SB1132	1	R7	18K/1%	1
Q8	2SB1132	1	R8	10K/1%	1
Q9	2N3906	1	R9	10K	1
Q10	2N3906	1	R10	200K	1
Q11	2N3904	1	R11	10	1
Q12	2N3904	1	R12	OPEN	1
Q13	BAV99	1	R13	18K/1%	1
Q14	BAV99	1	R14	2K/1%	1
Q15	BAV99	1	R15	4.7K	1
Q16	2N3904	1	R16	47K	1
Q17	2N3904	1	R17	3K	1
R18	1K	1	R61	10	1
R19	750	1	R63	0	1
R20	3K	1	R64	0	1
R21	680 1%	1	R65	10	1
R22	150R	1	R66	10K	1
R23	3K	1	R67	10K	1
R24	240	1	R68	0	1
R25	300 1%	1	R69	OPEN	1
R26	560K	1	R70	0	1
R27	10K	1	R71	R	1
R28	0	1	R72	R	1
R29	4.7K	1	R73	OPEN	1
R30	3.3K	1	R74	0	1
R31	47K	1	R75	0	1
R32	OPEN	1	R76	10K	1
R33	10K	1	R77	10	1
R34	10K	1	R78	10	1
R35	OPEN	1	R79	4.7	1
R36	0	1	R80	4.7	1
R37	1K	1	R81	10K	1
R38	10K	1	R82	10K	1
R39	10K	1	R83	R	1
R40	10K	1	R84	33k	1
R41	1K	1	R86	R	1
R42	750k	1	R87	33k	1
R43	680k	1	R88	15k	1
R44	0	1	R89	10k	1
R45	100k	1	R90	1	1

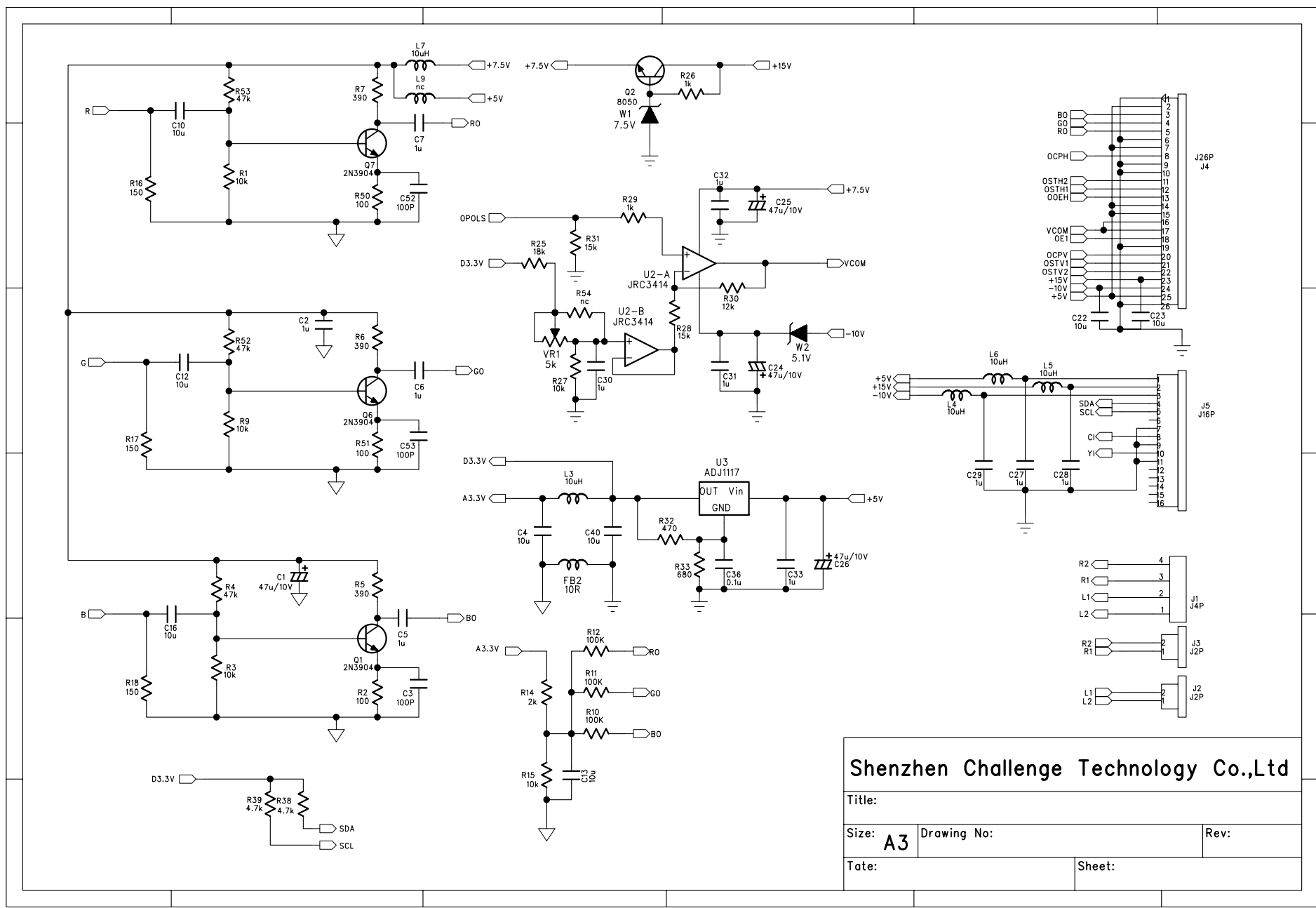
R46	150k	1	R91	1	1
R47	150k	1	R92	1	1
R48	680k	1	R93	1	1
R49	15k	1	R94	20k	1
R50	6.8	1	R95	10k	1
R51	100k	1	R96	20k	1
R52	R	1	R97	20k	1
R55	1	1	R98	10k	1
R56	0	1	R99	10K	1
R57	0	1	R100	R	1
R58	560	1			
R60	10k	1			
R101	R	1	R130	180K	1
R102	33	1	R131	100K	1
R103	33	1	R132	10K	1
R104	33	1	R133	1K	1
R105	33	1	R134	10K	1
R106	10k	1	R135	10K	1
R107	680	1	R136	24K	1
R108	680	1	R137	10K	1
R109	10k	1	R138	5.1K	1
R110	22K	1	R139	100	1
R111	75 1%	1	R140	180K	1
R112	470R	1	R141	100K	1
R114	4.7k	1	R142	10K	1
R115	100k	1	R143	1K	1
R116	100K	1	R145	100K	1
R117	10K	1	R146	100K	1
R118	75 1%	1	R148	OPEN	1
R119	100	1	R149	OPEN	1
R120	75	1	R150	100K	1
R121	150	1	R151	0	1
R123	75 1%	1	R152	4.7	1
R124	24K	1	R153	4.7	1
R125	10K	1	R154	1K	1
R126	10K	1	R155	1K	1
R127	10K	1	R156	100K	1
R128	5.1K	1	R157	3.3K	1
R129	100	1	RN1	33x4	1
			SW1 E14MV7 (14mm)		1
			SW2 11MV7(11mm)		1

U1	MP1580	1
U2	MP1580	1
U3	MB3800	1
U4	LM393	1
U5	AZ1117H-ADJ	1
U7	MT1389D	1
U8	BA5954	1
U9	40 (70ns) (open)	1
U10	81616BH-7 (open)	1
U11	W986416BH-7	1
U12	749LV8192AT-70TC	1
U13	ATMEL 24C16	1
U14	NJM4580	1
U15	TPA0212	1
VJ1	VOLUME 50K	1
Y1	C27MHz	1



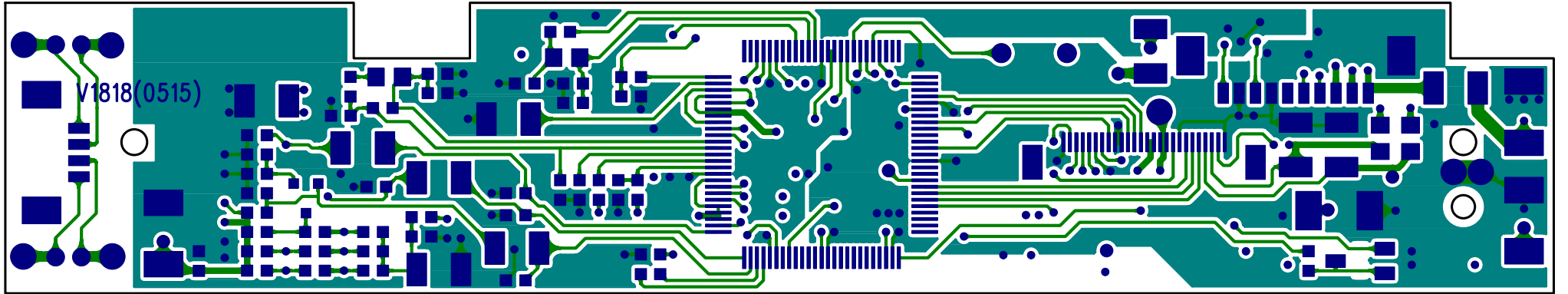
Shenzhen Challenge Technology Co.,Ltd

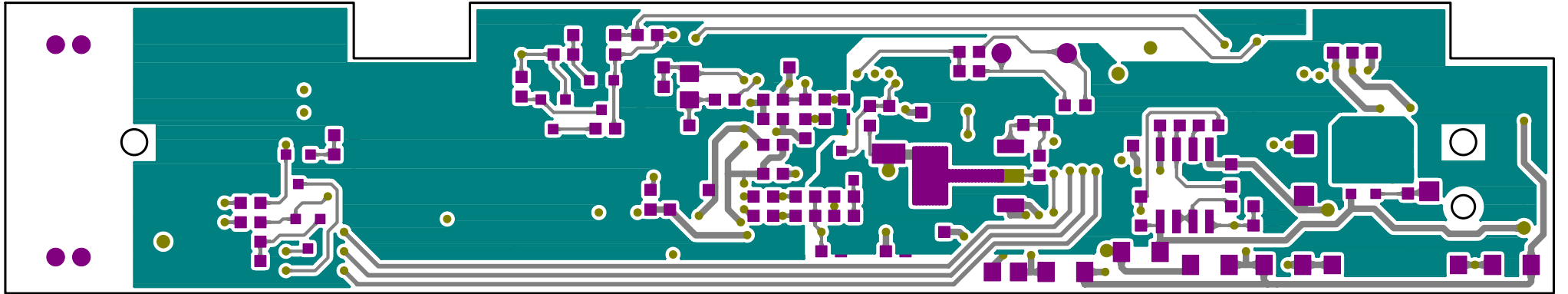
Title:		
Size: A3	Drawing No:	Rev:
Tate:	Sheet:	

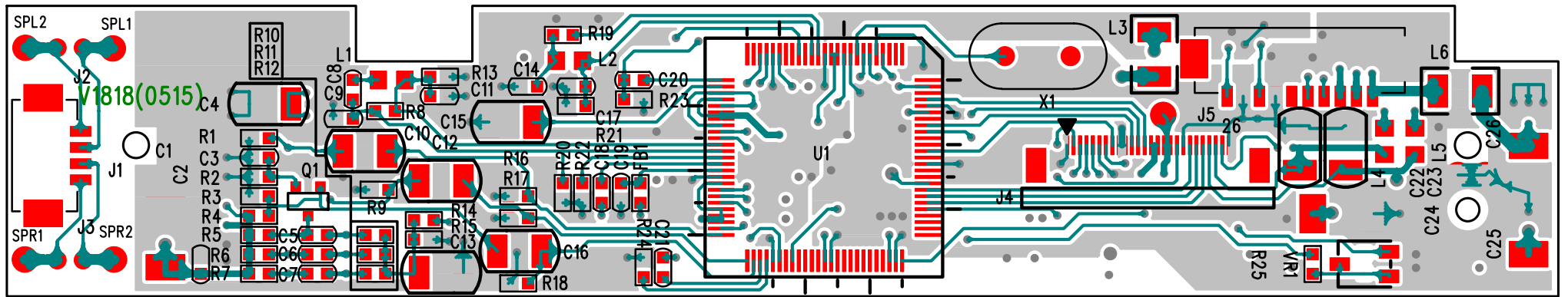


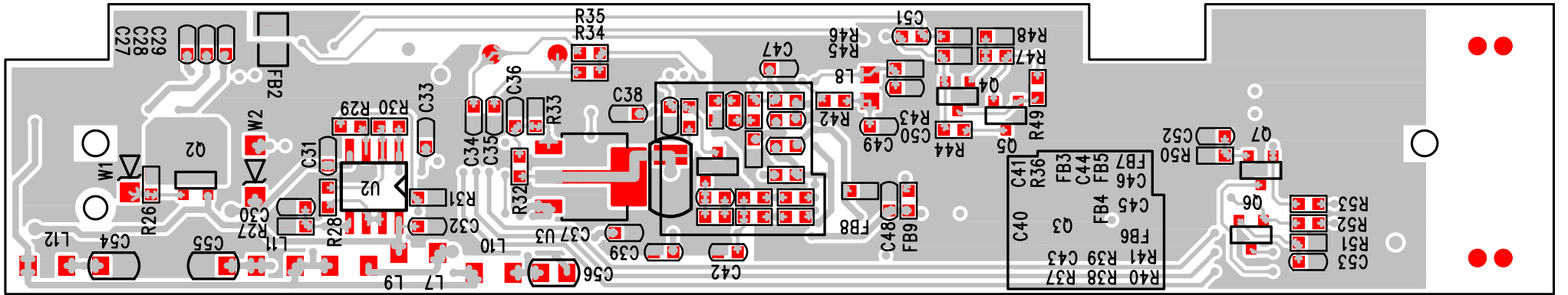
Shenzhen Challenge Technology Co.,Ltd

Title:		
Size: A3	Drawing No:	Rev:
Tate:		Sheet:



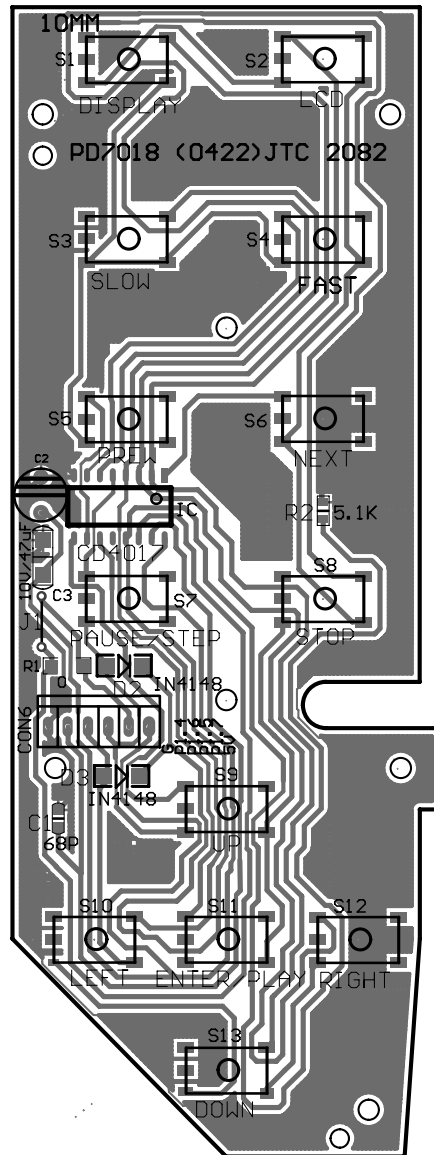


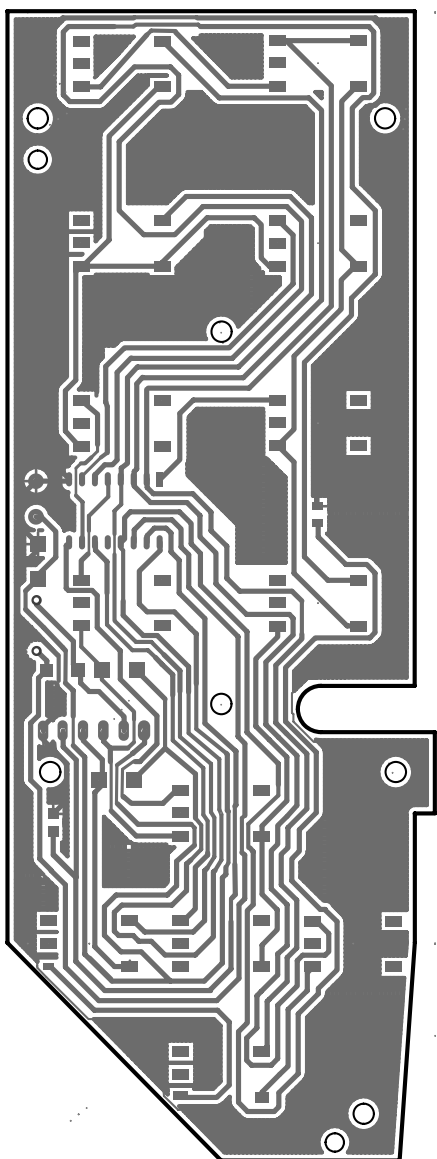




CAPACITOR			
C1	47uF/25V±5%	C28	CC0603-25V-1uF±5%
C2	CC0603-25V-1uF±5%	C29	CC0603-25V-1uF±5%
C3	CC0603-16V-100pF±5%	C30	CC0603-16V-1uF±5%
C4	CC1210-25V-10uF±5%	C31	CC0603-25V-1uF±5%
C5	CC0603-16V-1uF±5%	C32	CC0603-25V-1uF±5%
C6	CC0603-16V-1uF±5%	C33	CC0603-16V-1uF±5%
C7	CC0603-16V-1uF±5%	C34	CC0603-16V-22pF±5%
C8	CC0603-16V-440pF±5%	C35	CC0603-16V-22pF±5%
C10	CC1210-25V-10uF±5%	C36	CC0603-16V-0.1uF±5%
C11	CC0603-16V-39pF±5%	C37	CC0603-16V-1uF±5%
C12	CC1210-25V-10uF±5%	C38	CC0603-16V-1uF±5%
C13	CC1210-25V-10uF±5%	C39	CC0603-16V-1uF±5%
C14	CC0603-16V-33pF±5%	C40	CC1210-25V-10uF±5%
C15	CC1210-25V-10uF±5%	C41	CC0603-16V-15pF±5%
C16	CC1210-25V-10uF±5%	C42	CC0603-16V-1uF±5%
C17	CC0603-16V-82pF±5%	C44	CC0603-16V-1uF±5%
C18	CC0603-16V-0.1uF±5%	C45	CC0603-16V-1uF±5%
C19	CC0603-16V-1uF±5%	C46	CC0603-16V-1uF±5%
C20	CC0603-16V-0.22uF±5%	C47	CC0603-16V-1uF±5%
C21	CC0603-16V-0.1uF±5%	C48	CC0603-16V-1uF±5%
C22	CC1210-25V-10uF±5%	C49	CC0603-16V-33pF±5%
C23	CC1210-25V-10uF±5%	C50	CC0603-16V-82pF±5%
C24	47uF/25V±5%	C51	CC0603-16V-0.22uF±5%
C25	47uF/25V±5%	C52	CC0603-16V-100pF±5%
C26	47uF/25V±5%	C53	CC0603-16V-100pF±5%
C27	CC0603-16V-1uF±5%		
RESISTOR			
R1	RT0603-1/16W-10K ±5%	R29	RT0603-1/16W-1K ±5%
R2	RT0603-1/16W-100 ±5%	R30	RT0603-1/16W-12k ±5%
R3	RT0603-1/16W-10K ±5%	R31	RT0603-1/16W-15k ±5%
R4	RT0603-1/16W-47K ±5%	R32	RT0603-1/16W-470 ±5%
R5	RT0603-1/16W-390 ±5%	R33	RT0603-1/16W-680 ±5%
R6	RT0603-1/16W-390 ±5%	R34	RT0603-1/16W-1M ±5%
R7	RT0603-1/16W-390 ±5%	R35	RT0603-1/16W-3.3K ±5%
R8	RT0603-1/16W-2K ±5%	R36	RT0603-1/16W-4.7K ±5%
R9	RT0603-1/16W-10K ±5%	R37	RT0603-1/16W-100k ±5%
R10	RT0603-1/16W-100k ±5%	R38	RT0603-1/16W-4.7K ±5%
R11	RT0603-1/16W-100k ±5%	R39	RT0603-1/16W-4.7K ±5%
R12	RT0603-1/16W-100k ±5%	R40	RT0603-1/16W-100 ±5%

R13	RT0603-1/16W-250 ±5%	R41	RT0603-1/16W-100 ±5%
R14	RT0603-1/16W-2K ±5%	R42	RT0603-1/16W-330 ±5%
R15	RT0603-1/16W-10K ±5%	R43	RT0603-1/16W-3.9K±5%
R16	RT0603-1/16W-150 ±5%	R44	RT0603-1/16W-51 ±5%
R17	RT0603-1/16W-150 ±5%	R45	RT0603-1/16W-220k ±5%
R18	RT0603-1/16W-150 ±5%	R46	RT0603-1/16W-240 ±5%
R19	RT0603-1/16W-330 ±5%	R47	RT0603-1/16W-8.2K ±5%
R20	RT0603-1/16W-1K ±5%	R48	RT0603-1/16W-2.4K ±5%
R21	RT0603-1/16W-3.9K±5%	R49	RT0603-1/16W-4.7K ±5%
R22	RT0603-1/16W-8.2K ±5%	R50	RT0603-1/16W-100 ±5%
R23	RT0603-1/16W-330 ±5%	R51	RT0603-1/16W-100 ±5%
R24	RT0603-1/16W-4.7K ±5%	R52	RT0603-1/16W-47K ±5%
R25	RT0603-1/16W-18K ±5%	R53	RT0603-1/16W-47K ±5%
R26	RT0603-1/16W-1K ±5%	R55	RT0603-1/16W-2K ±5%
R27	RT0603-1/16W-10K ±5%	L7	RT0805-1/16W-0 ±5%
R28	RT0603-1/16W-15k ±5%		
DIODE			
Q1	2N3904	Q5	2N3906
Q2	8050	Q6	2N3904
Q3	2SK3018	Q7	2N3904
Q4	2N3904		
CRYSTAL			
X1	20MHZ-22pF±20ppm		
FERRITILE BEAD			
FB1	CBG160808U601	FB6	CBG160808U601
FB2	GBG201209U110	FB7	CBG160808U601
FB3	CBG160808U110	FB8	CBG160808U110
FB4	CBG160808U110	FB9	CBG160808U601
FB5	CBG160808U601		
INDUCTOR			
L1	5.4uH	L5	10uH
L2	8.2uH	L6	10uH(twist)
L3	10uH(twist)	L8	8.2uH
L4	10uH		





CAPACITOR			
C1	CC0603-68pF/50v±10%	C3	CC1206-10uF/10v±10%
RESISTOR			
R1	RT1206-0 -1/16W±5%	R2	RT0603-5.1K -1/16W±5%
SWITCH			
S1	DS700-022	S8	DS700-022
S2	DS700-022	S9	DS700-022
S3	DS700-022	S10	DS700-022
S4	DS700-022	S11	DS700-022
S5	DS700-022	S12	DS700-022
S6	DS700-022	S13	DS700-022
S7	DS700-022		
DIODE			
D2	N4148(SMT-1206)	D3	N4148(SMT-1206)
IC			
IC	74HC4017D		
SOCKET			
CON6	PH2-6(W)		

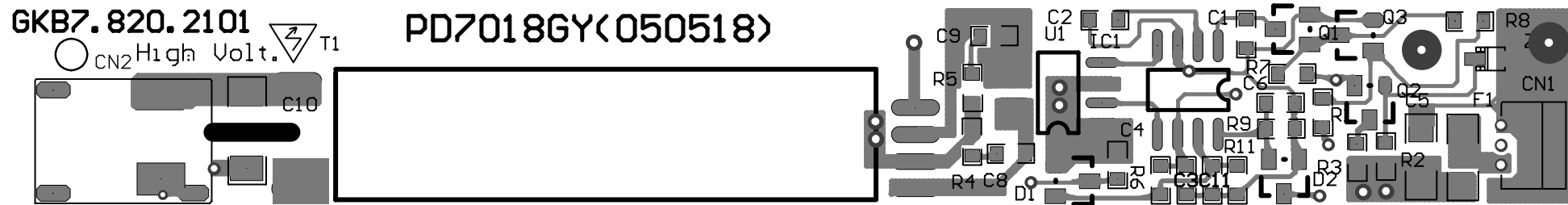


PD7018-GY

GKB7.820.2101

○ CN2 High Volt.  T1

PD7018GY(050518)



PD7018**PARTS LIST
REFERENCE****OF GY
PART****DESCRIPTION****PACKAGE****CAPACITOR**

C1	CC0603-10V	0.47µ F, 10%, 10V,C	X7R
C2	CC0603--50V	390PF, 5%, 50V,C	NPO
C3	CC0603-10V	2.2µ F, 10%, 10V,C	Y5V
C4	CC0603-25V	0.033µ F, 10%, 25V,C	X7R
C5	CC1206-25V	10µ F, 10%, 25V,C	X7R
C6	CC0603-25V	0.1µ F, 10%, 25V,C	X7R
C8	CC0603-25V	2200pF , 10%, 25V,C	X7R
C9	CC0603-25V	2200pF , 10%, 25V,C	X7R
C10	CC1808-COG-3KV	22pF , 10%, 3KV,C	
C11	CC0603-25V	0.01uF , 10%, 25V,C	

DIODE

ZD1	UDZ5.6V	UDZ5.6V	SOD-323
D1	BAV99	BAV99	SOT-23
D2	BAV99	BAV99	SOT-23

TRANSISTOR

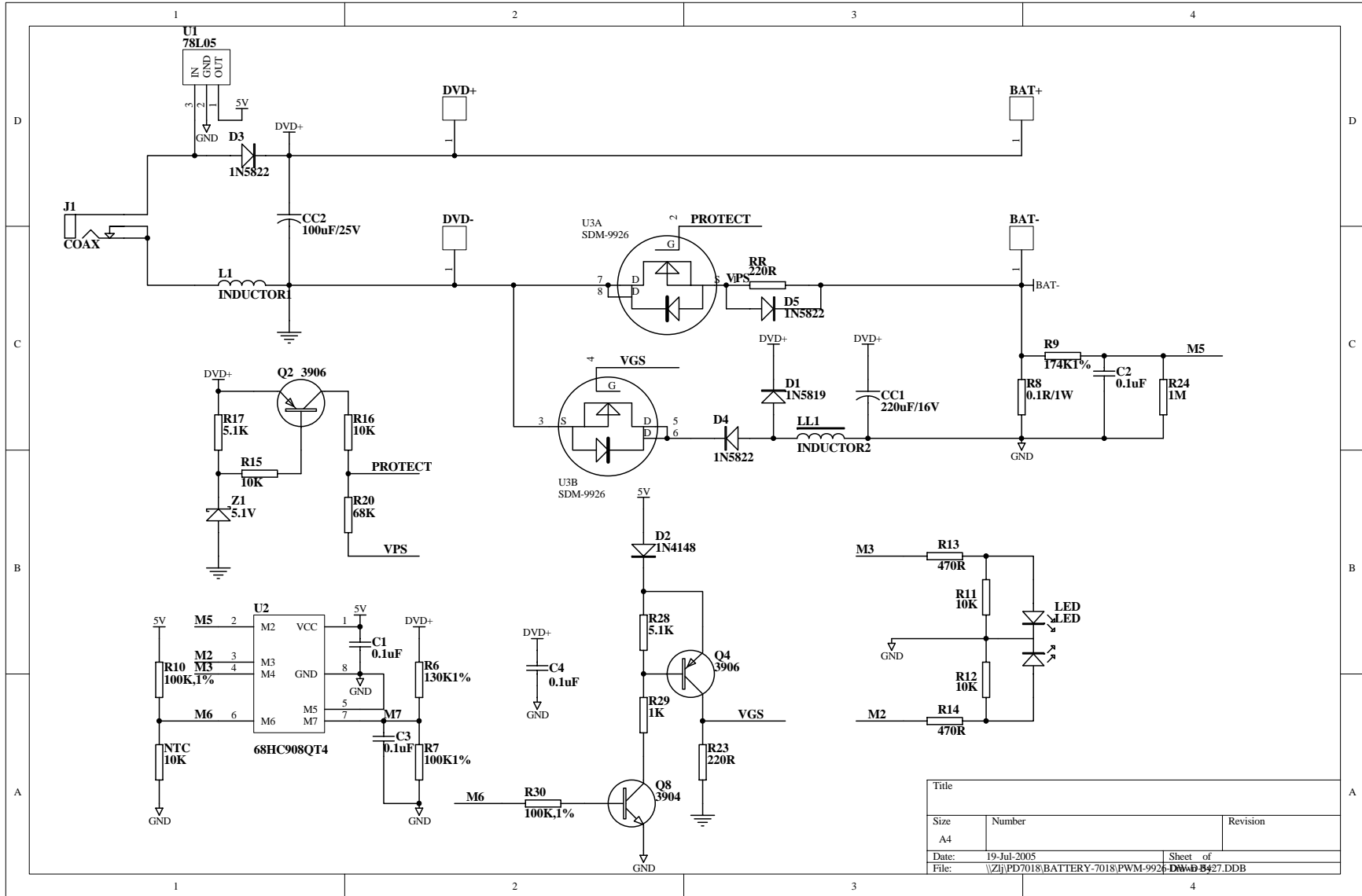
Q1	2N7002	2N7002	SOT-23
Q2	2N3904S	2N3904S	SOT-23
Q3	2N7002	2N7002	SOT-23
F1	1206,2A/32V	1206,2A/32V	
T1	U18.5(E)	U18.5(E)	HARD

RESISTOR

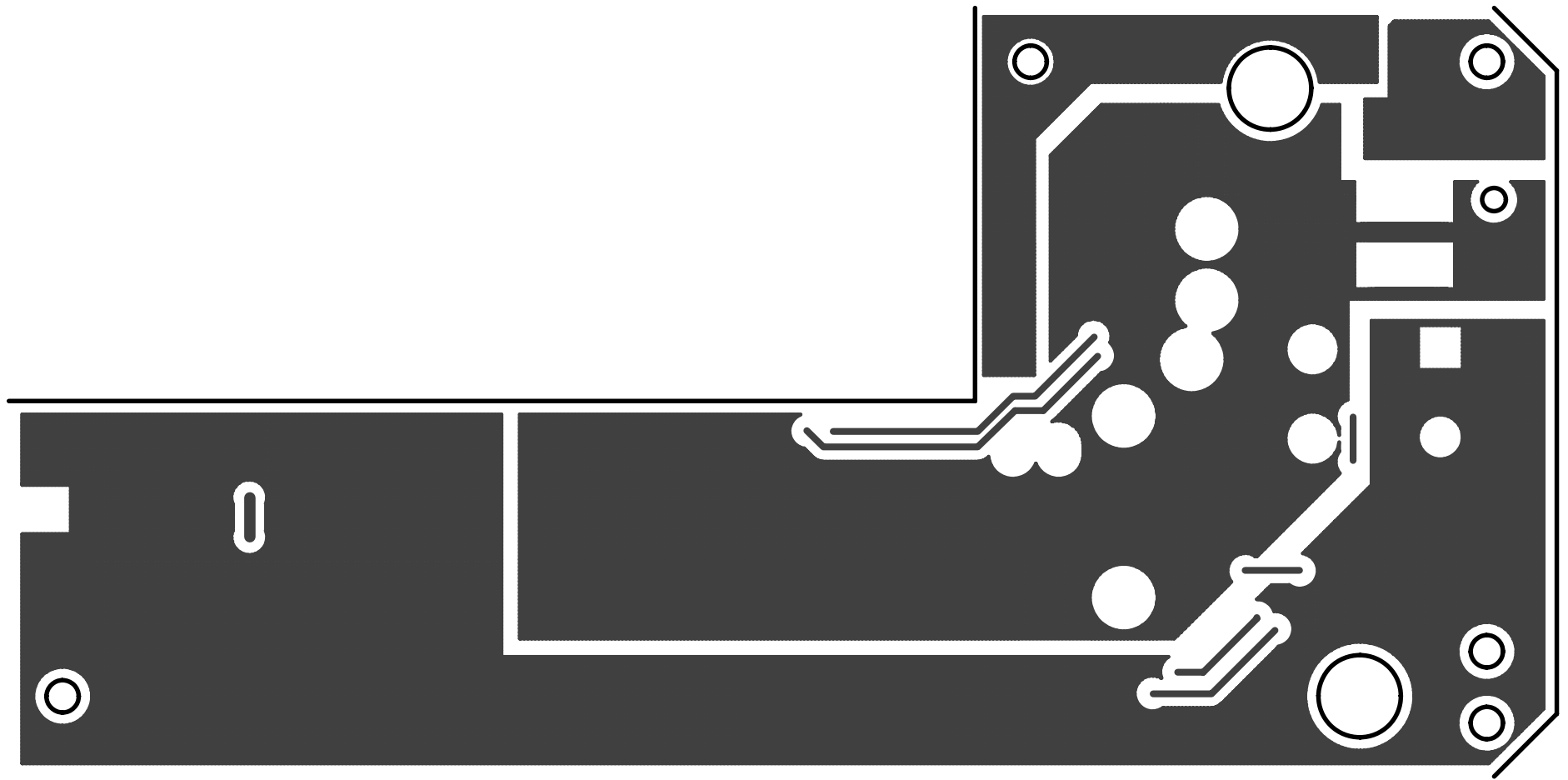
R1	RT0603-1/16W	10K ohm,5%,1/16W,C	
R2	RT0603-1/16W	1.2K ohm,5%,1/16W,C	
R3	RT0603-1/16W	10 ohm,5%,1/16W,C	
R4	RT0603-1/16W	33 ohm,5%,1/16W,C	
R5	RT0603-1/16W	33 ohm,5%,1/16W,C	
R6	RT0603-1/16W	820K ohm,5%,1/16W,C	
R7	RT0603-1/16W	100K ohm,5%,1/16W,C	
R9	RT0603-1/16W	820 ohm,5%,1/16W,C	
R11	RT0603-1/16W	1M ohm,5%,1/16W,C	

IC

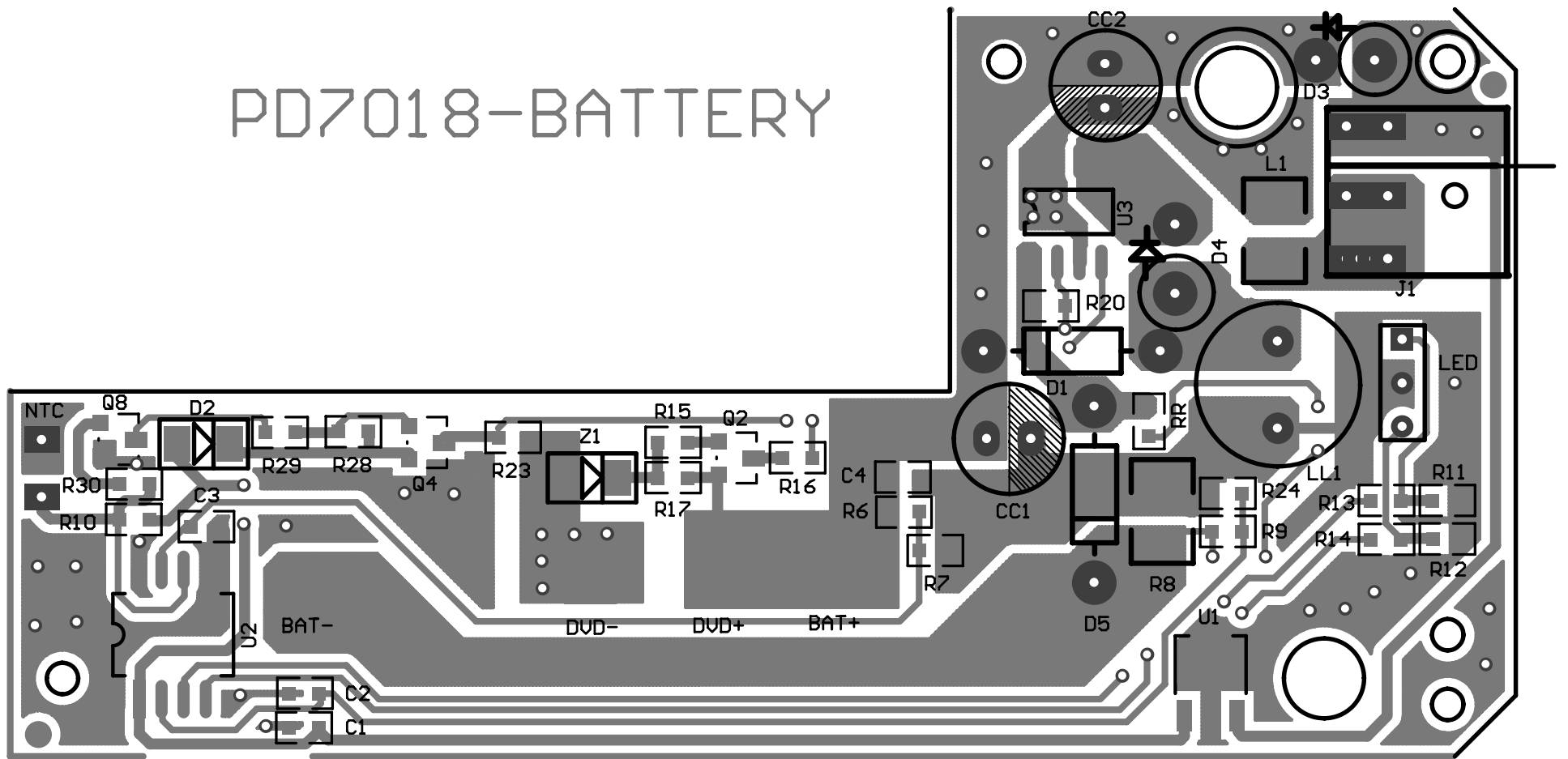
IC1	OZ9RRA	OZ9RRA	SO-8
U1	AP9962M	AP9962M	SO-8
CN1	1.25J-3AW	53048-0310	
CN2	SM02-BHSS-1-TB	SM02-BHSS-1-TB	



Title		
Size	Number	Revision
A4		
Date:	19-Jul-2005	Sheet of
File:	\Zij\PD7018\BATTERY-7018\PWM-9926-DWB427.DDB	



PD7018-BATTERY



PD7018**PARTS LIST OF BATTERY**

REFERENCE	PART/ALTERNATIVE	DESCRIPTION	PACKAGE
C1	CC0603-25V	0.1µ F,10%, 25V,C	X7R
C2	CC0603-25V	0.1µ F,10%, 25V,C	X7R
C3	CC0603-25V	0.1µ F,10%, 25V,C	X7R
C4	CC0603-25V	0.1µ F,10%, 25V,C	X7R
CC1	CD11X-16V	220UF,20%, 16V E	Alum.Cap
CC2	CD11X-25V	100UF,20%, 25V E	Alum.Cap

DIODE

D1	IN5819	IN5819	DIODE0.4
D2	IN4148	IN4148	DIODE
D3	IN5822	IN5822	DIODE0.4
D4	IN5822	IN5822	DIODE0.4
D5	IN5822	IN5822	DIODE0.4
Z1	ZD 5.1V	ZD 5.1V	DIODE
LED	SIP-3	05H-LED RED/GREEN	SIP-3

FERRITE BEAD

LL1	LR 100uH/2A	∩ Ø=9mm,h=12mm
-----	-------------	----------------

TRANSISTOR

Q2	2N3906S	2N3906S	SOT-23
Q4	2N3906S	2N3906S	SOT-23
Q8	2N3904S	2N3904S	SOT-23

RESISTOR

R6	RT0603-1/16W	130K ohm,1%,1/16W,C
R7	RT0603-1/16W	100K ohm,1%,1/16W,C
R8	RT1206-1/4W	0.1 ohm,5%,1/4W,C
R9	RT0603-1/16W	174K ohm,1%,1/16W,C
R10	RT0603-1/16W	100K ohm,1%,1/16W,C
R11	RT0603-1/16W	10K ohm,5%,1/16W,C
R12	RT0603-1/16W	10K ohm,5%,1/16W,C
R13	RT0603-1/16W	470 ohm,5%,1/16W,C
R14	RT0603-1/16W	470 ohm,5%,1/16W,C
R15	RT0603-1/16W	10K ohm,5%,1/16W,C
R16	RT0603-1/16W	10K ohm,5%,1/16W,C
R17	RT0603-1/16W	5.1K ohm,5%,1/16W,C
R20	RT0603-1/16W	68K ohm,5%,1/16W,C
R23	RT0603-1/16W	220 ohm,5%,1/16W,C
RR	RT0603-1/16W	220 ohm,5%,1/16W,C
R24	RT0603-1/16W	1M ohm,1%,1/16W,C

R28	RT0603-1/16W	5.1K ohm,5%,1/16W,C	
R29	RT0603-1/16W	1K ohm,5%,1/16W,C	
R30	RT0603-1/16W	100K ohm,1%,1/16W,C	
L1	RT1206-1/16W	0 ohm,5%,1/16W,C	
NTC	SIP-2-1/16W	10K ohm,5%,1/16W,C	B=3950

IC

U1	78L05	78L05
U2	68HC908QT4	68HC908QT4
U3	SDM-9926	SDM-9926

J1	DC-006A	DC-006A
	DYF-02	DYF-02
	NIHM-43A-247A	NIHM-43A-247A

DVP-705 EXPLODED VIEW PAPTS LIST

NO.	CODE	NAME	QTY.	REMARK
1.	GKB8.647.807	Top Deco	1	
2.	GKB8.081.603	Top Panel	1	
3.		Screen	1	
4.		High Voltage PWB		
5.		Drive PWB		
6.		Speaker		
7.	GKB8.081.604	Bottom Shell	1	
8.	GKB8.634.483	Net	1	
9.	GKB8.668.110	Hook	1	
10.	GKB8.683.255	TFT Cushion	2	
11.	GKB8.383.230	Axle Spring	2	
12.	GKB8.306.106	Axle	1	
13.	GKB8.081.609	Disc Cover	1	
14.	GKB8.610.592	Axle Clip	1	
15.	GKB8.081.605	Top Shell	1	
16.	GKB8.661.107	Hook Control	1	
17.	GKB8.357.101	Disc Touch Pin	1	
18.	GKB8.610.593	Axle Stopper	1	
19.	GKB8.357.100	Sensitive part	1	
20.	GKB8.335.765	Keys	1	
21.		Key PWB	1	
22.	GKB8.335.766	Open Disc Key	1	
23.	GKB8.600.288	Slider	1	
24.	GKB8.382.187	Open Key Spring	1	
25.	GKB8.610.594	Open Holder	1	
26.		Loading		
27.		Main PWB		
28.	GKB8.382.188	Hook Spring	1	
29.	GKB8.081.606	Bottom Shell	1	
30.	GKB8.335.747	Power Key	1	
31.		Power PWB		
32.	GKB8.044.463	Bracket	1	
33.	GKB8.078.502	PCB Clamp	1	
34.		Battery Contact 1	1	

35.	GKB6.467.107	Hinge (L)	1	
36.	GKB6.467.108	Hinge (R)	1	
37.	GKB8.044.461	Hinge Press Board	2	
38.	GKB8.048.353	Mount piece	2	
39.	GKB8.610.595	Side Plate	1	
40.	GKB8.640.778	Remote	1	
41.	GKB8.640.779	Indicator	1	
42.	GKB8.031.287	Metal plate	1	
43.	GKB8.600.285	Foot	4	
44.	GKB8.081.607	Top Battery Cover	1	
45.		Battery		
46.		Battery PWB		
47.	GKB8.382.175	Battery Button Spring	1	
48.	GKB8.335.767	Battery Button	1	
49.	GKB8.081.608	Bottom Battery Cover	1	
50.		Battery Contact 2		
51.		Screw, M1.7x4F (With Screw Kit)	15	
52.		Screw, M1.7x5F (With Screw Kit)	4	
53.		Screw ,M1.7x6F (With Screw Kit)	5	
54.		Screw , M2x5F (With Screw Kit)	11	
55.		Screw , M2x12F (With Screw Kit)	7	
56.		Screw , M2x4 (With Screw Kit)	9	
57.		Screw ,M2x6 (With Screw Kit)	6	
58.		Screw ,M1. 7x3. 8F (With Screw Kit)	5	
59.				
60.				
61.				
62.				