



SCHNEIDER
Schneider AG DUAL GmbH
Silvastraße 1
D-86842 TÜRKHEIM

Date : 28.12.99

Service - Info

Unit : Chassis TV 9

KD0002K

No.: 240

Concern: AV / RGB position

Remedy: The horizontal RGB position can be altered in the servicemode / alignment parameter „Horizontal Pos. RGB“ .

Service-Mode:

Simultaneously press and then release the red and blue button on the remote control. Simultaneously press and then release within 5 seconds the buttons „ program + “ and „ volume - “ at the local control panel. The main service menu appears on the screen :

4 : 3

Service Mode TV 9 Version XX

OK . . save TV . . leave menu

Select the parameter „Horizontal Pos. RGB “ with the button ▲/▼ (program + / -) on the remote control. The RGB menu appears on the screen:

4 : 3

Horizontal Pos. RGB - 10

OK . . save TV . . leave menu

Alter with the buttons ◀ / ▶ (volume + / -) the on the remote control the horizontal position best possible. Press the button „ **OK** “ on the remote control to store it. Press the button „ **TV** “ to leave the service mode.

Modifications reserved !

**SCHNEIDER**

Schneider AG DUAL GmbH

Silvastraße 1

D-86842 TÜRKEIM

Date: 17.07.00

Service-Info

Concern : TV 9 NVM values depending on the set type

Info 241

The chassis TV 9 exists in different versions and was used with several picture tubes. After an EEPROM swap or after a new initialisation the geometry, video and program parameter will be deleted and replaced by standard values. Therefore these parameter have to be set again. But attention, **at first** the set has to be set into the delivery status (info menu / parameter „reset“) alike the instruction manual. **After** that, the below declared NVM addresses have to be observed and if necessary to be altered according the below declared table:

Picture tube:	NVM-Values for Chassis TV9.1 B/G + TV9.1 B/G-PIP											
	0059	005A	005E	0062	0E30	0E31	0E40	0E44	0066	0080	0E50	0E80
A59EMZ07X... + A59TMZ43X...	0F	00	31	17	FE	00	BC	2D	0F	69	2C	01
A59EMZ05X...	31	01	2D	17	FE	00	CA	2D	0F	69	30	01
A59ECF50X...	-	-	-	16	2C	01	B4	64	0F	69	30	01
A66EAK552X.. + A66EAK071X...	-	-	-	16	2C	01	B4	90	0F	69	2B	01
A66EHJ43X...	0E	-	-	16	C8	00	D5	5F	0F	69	30	01
A63EQQ50X...	-	-	-	16	FE	00	D1	64	0F	69	2C	01
A66EMZ43X...	0F	00	31	17	FE	00	C4	47	0F	69	2C	01
A66ECF50X...	-	-	-	-	2C	01	C2	55	-	-	2B	01
	0082	0068	0069	006A	006B	0078	0200	0201	0202	0049	0E1D	
A59EMZ07X... + A59TMZ43X...	00	B9	01	C5	01	6D	1D	18	15	00	04	
A59EMZ05X...	00	-	-	-	-	-	1D	18	15	00	04	
A59ECF50X...	00	-	-	-	-	-	1D	18	15	00	04	
A66EAK552X.. + A66EAK071X...	00	B0	01	BB	01	6D	1D	18	15	00	04	
A66EHJ43X...	00	AA	01	B0	01	70	1D	18	15	00	04	
A63EQQ50X...	00	A1	01	B1	01	6D	1B	16	15	00	04	
A66EMZ43X...	00	B9	01	C5	01	6D	1D	18	15	00	04	
A66ECF50X...	00	B2	01	BE	01	6D	1D	18	15	00	04	

Picture tube:	NVM-Values for Chassis TV9.1 B/G – Dolby / Part 1														
	0059	005A	005E	0062	0E30	0E31	0E40	0E44	0066	0300	0080	0302	0E50	030E	0E80
A59EMZ07X... + A59TMZ43X...	0F	00	31	17	FE	00	BC	2D	0F	23	69	00	2C	1C	01
A59EMZ05X...	31	01	2D	17	FE	00	CA	2D	0F	23	69	00	30	1C	01
A59ECF50X...	-	-	-	16	2C	01	B4	64	0F	23	69	00	30	1C	01
A66EAK552X.. + A66EAK071X...	-	-	-	16	2C	01	B4	90	0F	23	69	00	2B	1C	01
A66EHJ43X...	0E	-	-	16	C8	00	D5	5F	0F	23	69	00	30	1C	01
A63EQQ50X...	-	-	-	16	FE	00	D1	64	0F	23	69	00	2C	1C	01
A66EMZ43X...	0F	00	31	17	FE	00	C4	47	0F	23	69	00	2C	1C	01

NVM-Values for Chassis TV9.1 B/G – Dolby / Part 2												
Picture tube :	0082	0068	0069	006A	006B	0078	0200	0201	0202	0049	0E1D	
A59EMZ07X... + A59TMZ43X...	00	B9	01	C5	01	6D	1D	18	15	00	04	
A59EMZ05X...	00	-	-	-	-	-	1D	18	15	00	04	
A59ECF50X...	00	-	-	-	-	-	1D	18	15	00	04	
A66EAK552X... + A66EAK071X...	00	B0	01	BB	01	6D	1D	18	15	00	04	
A66EHJ43X...	00	AA	01	B0	01	70	1D	18	15	00	04	
A63EQQ50X...	00	A1	01	B1	01	6D	1B	16	15	00	04	
A66EMZ43X...	00	B9	01	C5	01	6D	1D	18	15	00	04	

NVM-Values for Chassis TV9.1 Multi / Multi-PIP / Multi-Dolby												
Picture tube:	0059	005A	005E	0062	0E30	0E31	0E40	0E44	0066	0080	0E20	0E50
A59EMZ07X... + A59TMZ43X...	0F	00	31	17	FE	00	BC	2D	0F	69	01	2C
A59EMZ05X...	31	01	2D	17	FE	00	CA	2D	0F	69	01	30
A59ECF50X...	-	-	-	16	2C	01	B4	64	0F	69	01	30
A66EAK552X... + A66EAK071X...	-	-	-	16	2C	01	B4	90	0F	69	01	2B
A66EHJ43X...	0E	-	-	16	C8	00	D5	5F	0F	69	01	30
A63EQQ50X...	-	-	-	16	FE	00	D1	64	0F	69	01	2C
A66EMZ43X...	0F	00	31	17	FE	00	C4	47	0F	69	01	2C
A66ECF50X...	-	-	-	-	2C	01	C2	55	-	-	2B	01
	0C03*	0068	0069	006A	006B	0078	0200	0201	0202	0049	0E1D	
A59EMZ07X... + A59TMZ43X...	2A	B9	01	C5	01	6D	1D	18	15	00	04	
A59EMZ05X...	2A	-	-	-	-	-	1D	18	15	00	04	
A59ECF50X...	2A	-	-	-	-	-	1D	18	15	00	04	
A66EAK552X... + A66EAK071X...	2A	B0	01	BB	01	6D	1D	18	15		04	
A66EHJ43X...	2A	AA	01	B0	01	70	1D	18	15	00	04	
A63EQQ50X...	2A	A1	01	B1	01	6D	1B	16	15	00	04	
A66EMZ43X...	2A	B9	01	C5	01	6D	1D	18	15	00	04	
A66ECF50X...	2A	B2	01	BE	01	6D	1D	18	15	00	04	

* (Only for „PIP“)

	NVM-Values for Chassis TV 9.1 Nicam I														
Picture tube:	0049	0068	0069	006A	006B	0078	0200	0201	0202	0300	050F	0D19	0D1A	0D1C	0D02
A 66 EHJ43 X...	00	AA	01	B0	01	70	1D	18	15	11	01	01	00	00	03
A 66 ECF50X...	00	B2	01	BE	01	6D	1D	18	15	11	01	01	00	00	03
	0D03	0E00	0E20	0E30	0E31	0E40	0E44	0E50							
A 66 EHJ43 X...	01	11	01	C8	00	D5	7F	2B							
A 66 ECF50 X...	01	11	01	2C	01	C2	5F	2B							

NVM-Values for Chassis TV9.2 Multi												
Picture tube:	0066	0080	0E20	0E50	0059	0062	0E30	0E31	0E40	0E44	0E1E	00AB
A66EHJ43X...	0F	69	01	2F	0E	16	C8	00	D5	5F	01	-
A66EAK552X... + A66EAK071X...	0F	69	01	2F	-	16	2C	01	B4	64	01	-
A80AEJ13X...	0F	69	01	2A	-	16	C8	00	D7	54	01	CC

NVM-Values for Chassis TV9.2 Multi Dolby PIP																
Picture tube:	0066	0080	0300	0302	030E	0422	0E20	0E50	0059	0062	0E30	0E31	0E40	0E1E	0E44	00AB
A66EHJ43X...	0F	69	23	00	1C	00	01	2F	0E	16	C8	00	D5	01	5F	-
A66EAK552X.. + A66EAK071X...	0F	69	23	00	1C	00	01	2F	-	16	2C	01	B4	01	64	-
A80AEJ13X...	0F	69	23	00	1C	00	01	2A	-	16	C8	00	D7	01	54	CC

NVM-Values for Chassis TV9.3 B/G																
Picture tube:	008A	0D19	0E24	0E26	0E28	0E50	0E60	0E64	0E6C	0E70	0E78	0E79	0E7A	0E7B	0E7C	0E7D
W66EHU13X...	3D	01	C3	3D	89	2C	26	D3	56	99	B0	00	B0	00	5E	01
	0E7E	0E7F	0E84	0E86	0E88	0E8A	0E8C	0E8E	0E8F	0E90	0E91	0E22	0E30	0E31	0E48	0E4A
	5E	01	AA	5A	88	B0	50	00	04	00	04	01	13	01	30	17

	NVM-Values for Chassis TV9.3 Multi																
Picture tube:	008A	0D19	0E20	0E24	0E26	0E28	0E50	0E60	0E64	0E6C	0E70	0E78	0E79	0E7A	0E7B	0E7C	0E7D
W66EHU13X...	3D	01	01	C3	3D	89	2C	26	D3	56	99	B0	00	B0	00	5E	01
	0E7E	0E7F	0E84	0E86	0E88	0E8A	0E8C	0E8E	0E8F	0E90	0E91	0E22	0E30	0E31	0E48	0E4A	
	5E	01	AA	5A	88	B0	50	00	04	00	04	01	12	01	30	17	

NVM-Values for Chassis TV9.4 B/G															
Picture tube:	0049	0066	0080	005C	00AB	0200	0201	0202	0203	0E30	0E31	0E40	0E44	0E50	0E80
A51EER13X... + A51JSY63X...	00	0F	69	3C	90	1A	1A	17	17	B0	00	DF	04	31	01

NVM-Values for Chassis TV 9.6 B/G															
Picture tube:	0049	0059	0062	0068	0069	006A	006B	00C2	00C3	0200	0201	0202	031C	0E60	0E61
A66 EHJ 43X...	00	-	-	98	01	A7	01	1A	1D	1D	18	15	03	C8	00
A66 EAK 71X...	00	-	-	A0	01	AC	01	1A	1D	1D	18	15	03	2C	01
A66 EMZ 43X...	00	-	-	A0	01	AC	01	1A	1D	1D	18	15	03	FE	00
A66 ECF 50X...	00	0F	17	A0	01	AC	01	1A	1D	1D	18	15	03	FE	00
	0E70	0E74	0E78	0E7A	0E80	0EBE	0EB0	0ED4	0EE1	0EE2					
A66 EHJ 43X...	33	60	10	33	29	04	01	64	FF	02					
A66 EAK 71X...	54	19	10	33	2B	04	01	64	FF	02					
A66 EMZ 43X...	4F	51	10	33	2B	04	01	64	FF	02					
A66 ECF 50X...	4F	51	10	33	2B	04	01	64	FF	02					

NVM-Values for Chassis TV 9.6 Multi															
Picture tube:	0049	0059	0062	0068	0069	006A	006B	00C2	00C3	0200	0201	0202	031C	0E60	0E61
A66 EHJ 43X...	00	-	-	98	01	A7	01	1A	1D	1D	18	15	03	C8	00
A66 EAK 71X...	00	-	-	A0	01	AC	01	1A	1D	1D	18	15	03	2C	01
A66 EMZ 43X...	00	-	-	A0	01	AC	01	1A	1D	1D	18	15	03	FE	00
A66 ECF 50X...	00	0F	17	A0	01	AC	01	1A	1D	1D	18	15	03	FE	00
	0E70	0E74	0E78	0E7A	0E80	0EBE	0ED4	04B7	04BA	04CE	0E50	0EE1	0EE2		
A66 EHJ 43X...	33	60	10	33	29	04	64	01	02	03	01	FF	02		
A66 EAK 71X...	54	19	10	33	2B	04	64	01	02	03	01	FF	02		
A66 EMZ 43X...	4F	51	10	33	2B	04	64	01	02	03	01	FF	02		
A66 ECF 50X...	4F	51	10	33	2B	04	64	01	02	03	01	FF	02		

	NVM-Values for Chassis TV 9.9														
Picture tube:	0049	0059	0062	0066	0068	0069	006A	006B	00A6	00C3	0200	0201	0202	031C	0E4E
A66 EHJ 43X...	00	0E	-	0F	CD	01	DB	01	01	17	1D	18	15	03	01
A66 EMZ 43X...	00	0F	17	0F	E5	01	F0	01	01	17	1D	18	15	03	01
	0E60	0E70	0E74	0E80											
A66 EHJ 43X...	C8	D5	5F	-											
A66 EMZ 43X...	FE	-	47	2C											

For information: If the sound disappear after the IC swap (IC 904) the „new initialisation of the channel positions“ has to be taken according service manual TV 9.

Additional the NVM address 0ED2 has to be set according the following table depending on the tuner type:

Set the NVM-address:	To NVM-Data :
0ED2	00 = Tuner 5002 PH5 or 01 = Tuner 6002 PH5

Service-Mode:

Simultaneously press and then release the **red** (picture menu) and **blue** (videotext) button on the remote control. Simultaneously press and then release within 5 seconds the buttons „program -“ and „volume +“ at the local control panel. The NVM menu appears on the screen. Select with the buttons „▲ / ▼“ on the remote control the parameter „NVM addr.“ The NVM menu appears on the screen.

The settings can be selected with the **red** (picture menu) button on the remote control and changed with buttons „volume +“ and „volume -“. Each changing of an address has to be stored **separately** with the button „OK“ on the remote control. After the changing of the addresses leave the service mode with the button „TV“ . To activate the modification switch off the set with the main power switch and start it again.

Attention: The changing of other addresses can effect further failure!

Modifications reserved !



Date : 21.12.99

Service - Info

Unit : Chassis TV 9

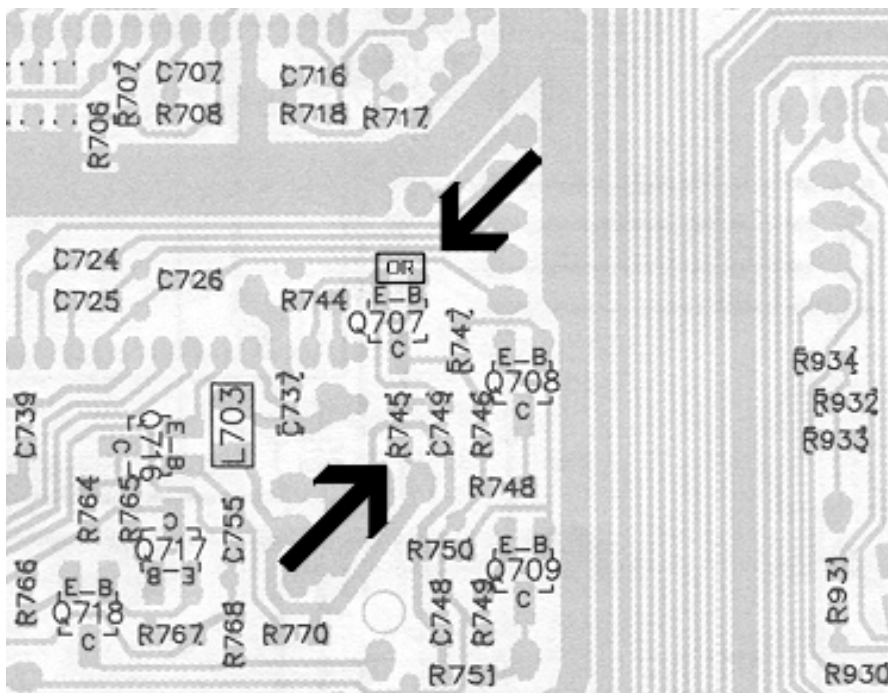
KD0002K

No.: 243

Concern: Vertical stripes at the right side behind the OSD

Remedy: Following parts have to be replaced or componentated respectively

- The chip resistor in position CR 745 (100 Ω) has to be removed and replaced by a 0 Ω version
- Between emitter and basis from transistor a 0 Ω chip resistor has to be componentated additional (like illustration)



Part number chip resistor 0 Ω : 0100060

Modification reserved !