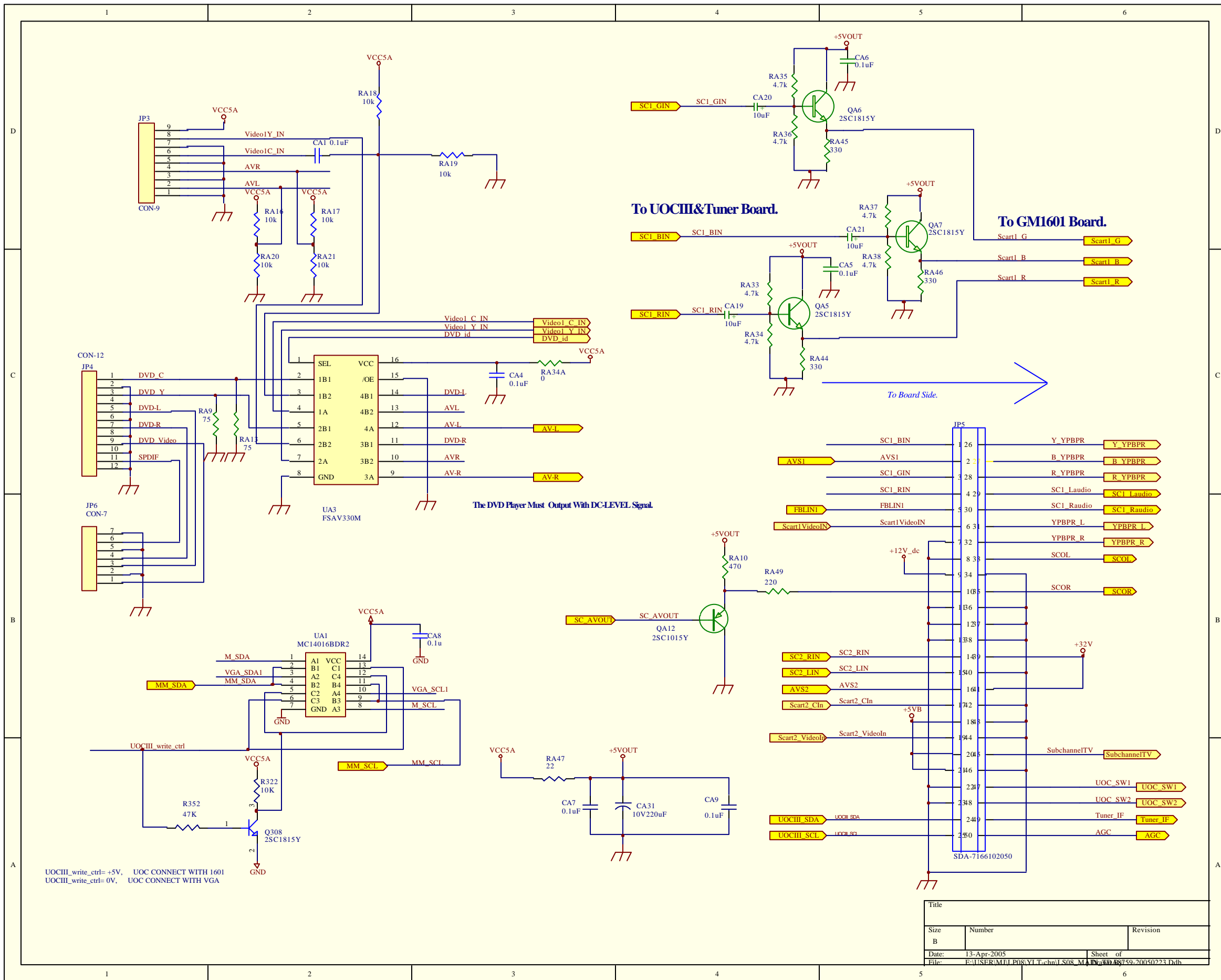
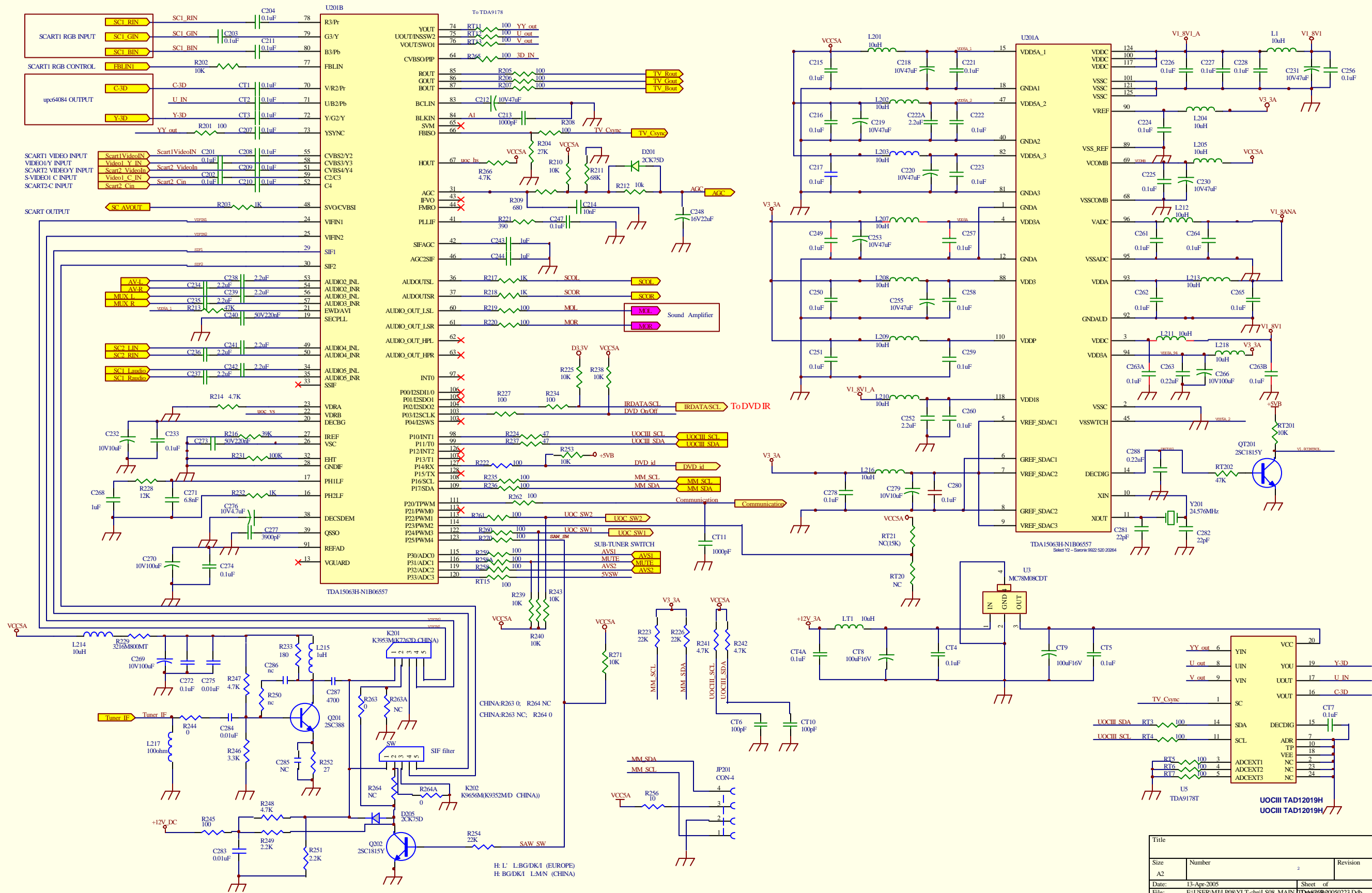


Title		
Size	Number	Revision
C		
Date:	13-Apr-2005	Sheet of
File:	F:\SERV\MU\PROJ\Tech\SR_MAT\20050413\04072413a	

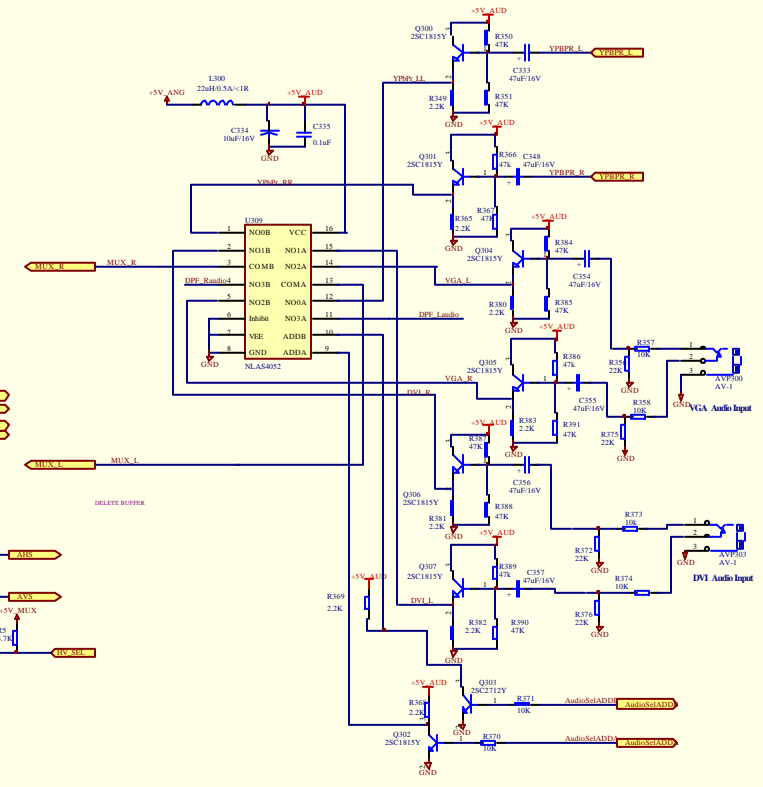
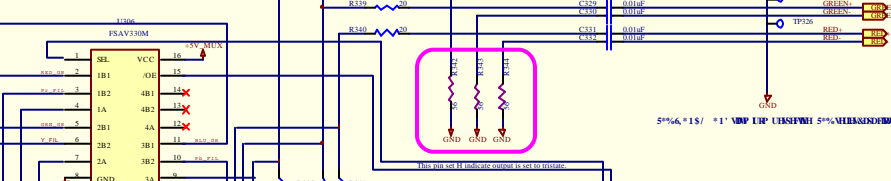
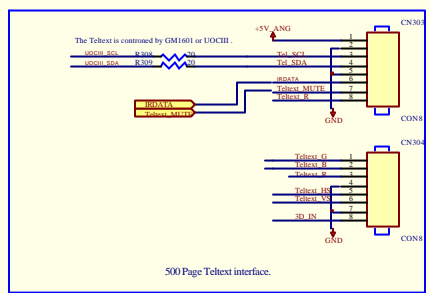
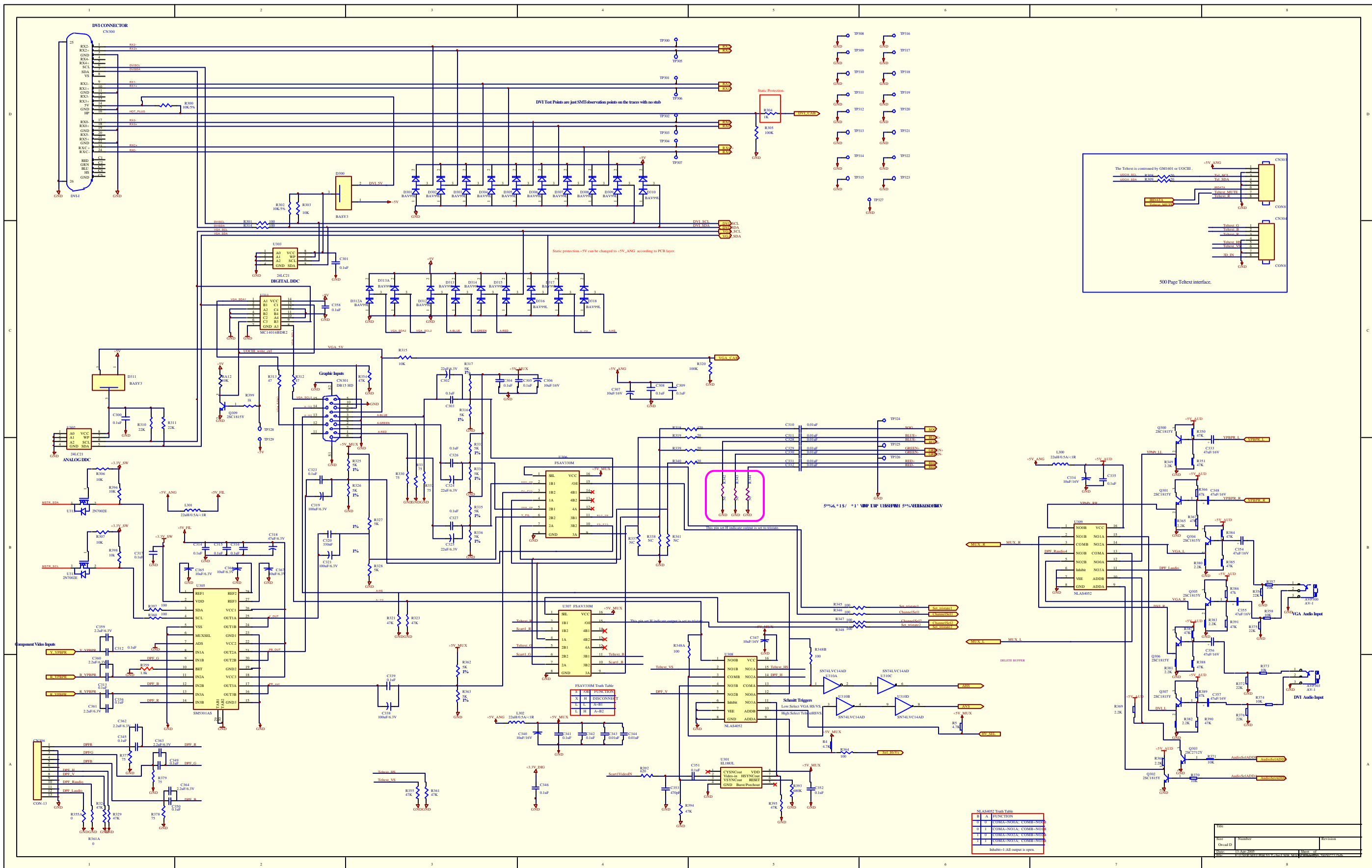


UOCIII_write_ctrl= +5V, UOC CONNECT WITH 1601
 UOCIII_write_ctrl= 0V, UOC CONNECT WITH VGA

Title		
Size	Number	Revision
B		
Date:	13-Apr-2005	Sheet of
File: E:\USER\MIL\BOS\VL\T\chn\LS08_M... 48759-20050273.Ddb		



Title			
Size	Number	Revision	
A2	2		
Date:	13-Apr-2005	Sheet of	2
File:	E:\USER\MU108\T1\ch1\SR_MAIN\TDA15063H-N1B06557.Dtb		



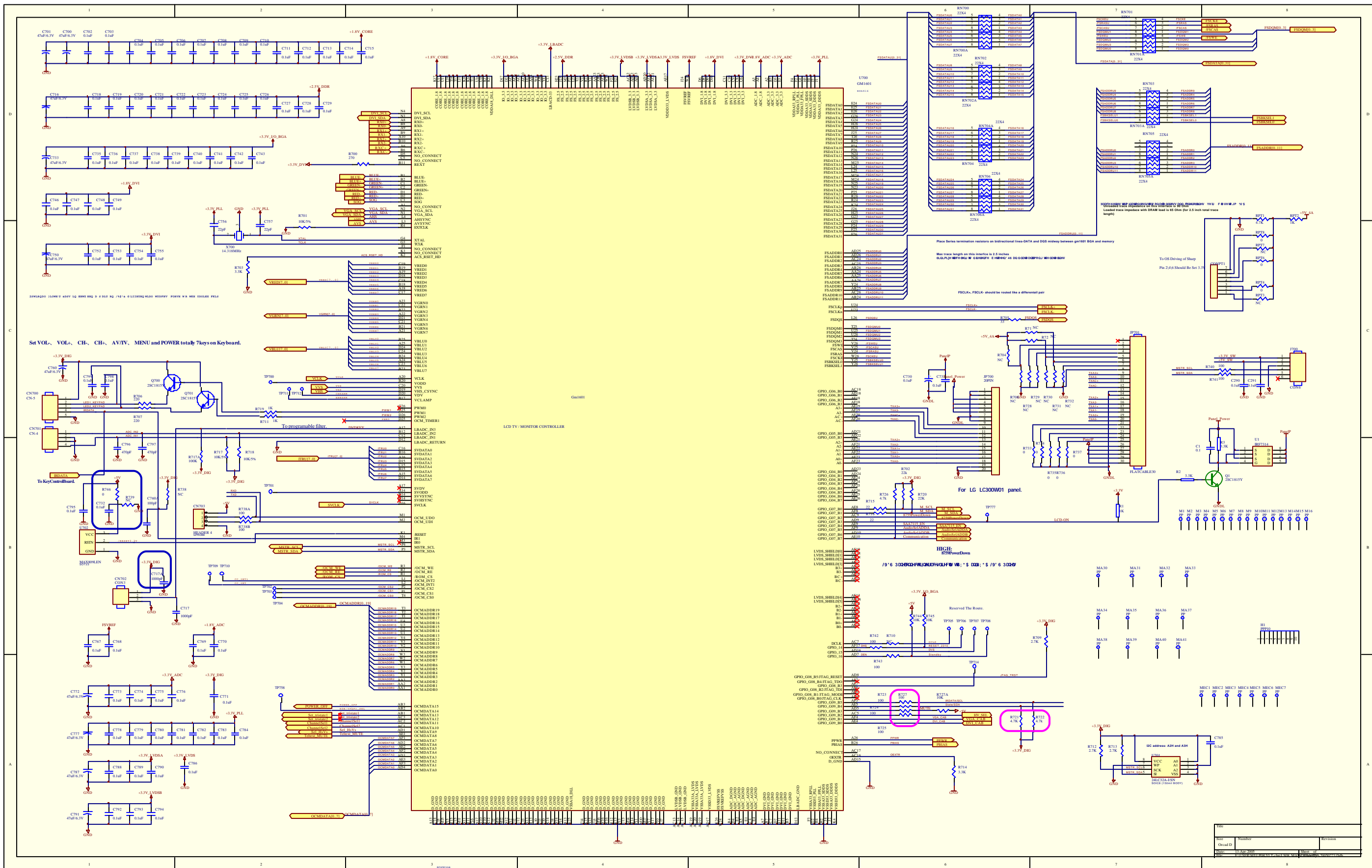
PSAV30M Truth Table

IN	FUNCTION
0 0	FUNCTION
1 1	FUNCTION
0 1	COMA-NO1A, COMB-NO1B
1 0	COMA-NO2A, COMB-NO2B
1 1	COMA-NO3A, COMB-NO3B
0 0	COMA-NO4A, COMB-NO4B

Inhibit-LAE input is open.

Revision History

Rev	Number	Revision
1	1.0	Initial Release
2	2.0	Update
3	3.0	Update
4	4.0	Update
5	5.0	Update
6	6.0	Update
7	7.0	Update
8	8.0	Update
9	9.0	Update
10	10.0	Update



Set VOL-, VOL+, CH-, CH+, AV/IV-, MENU and POWER totally 7keys on Keyboard.

Place series termination resistors on bidirectional lines-DATA and DQS midway between gm101 BGA and memory

Max trace length on this interface is 2.5 inches
0.015 INCHES (0.381 MM) IN 0.005 INCHES (0.127 MM) IN 0.005 INCHES (0.127 MM) IN 0.005 INCHES (0.127 MM) IN

FSLCA, FSLCB should be routed like a differential pair

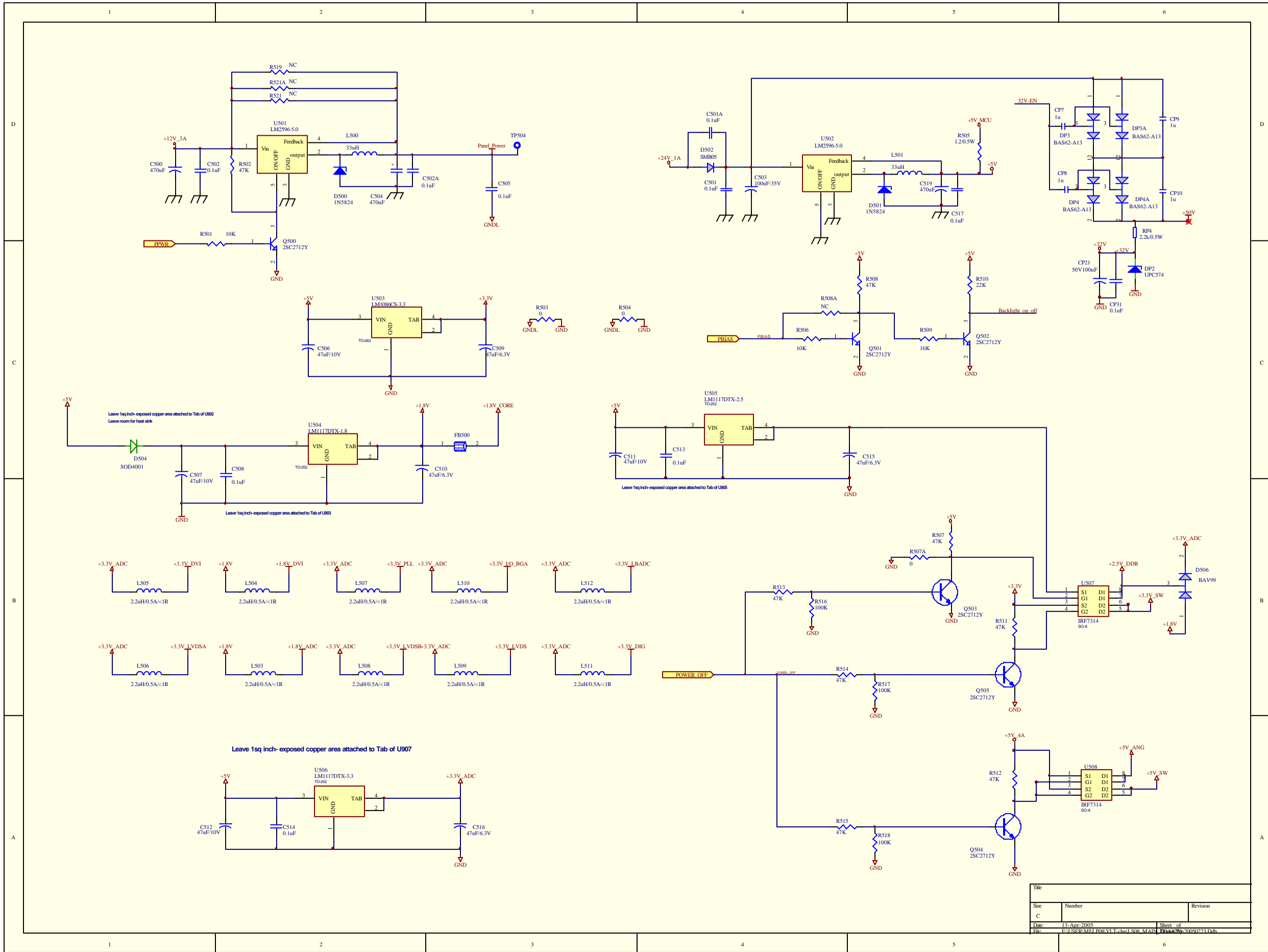
To OS Driving of Sharp
Pin 2-4 should be set 3.3V

For LG LC300W01 panel.

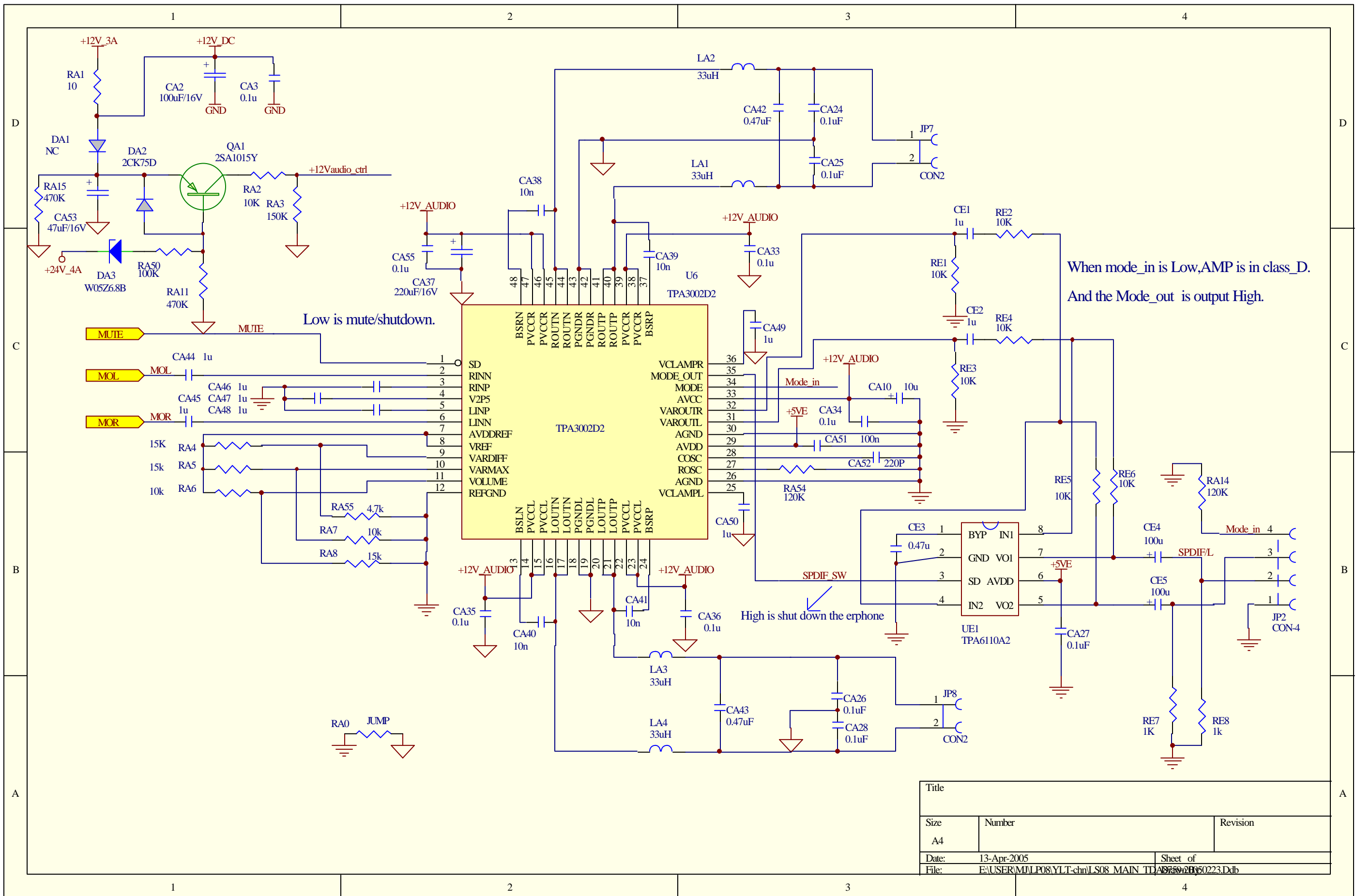
High Resolution

Reserved The Route.

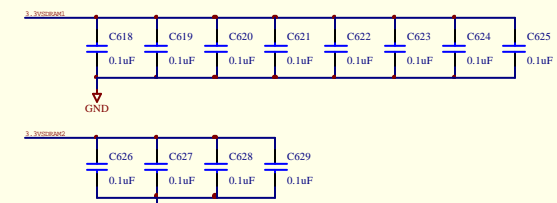
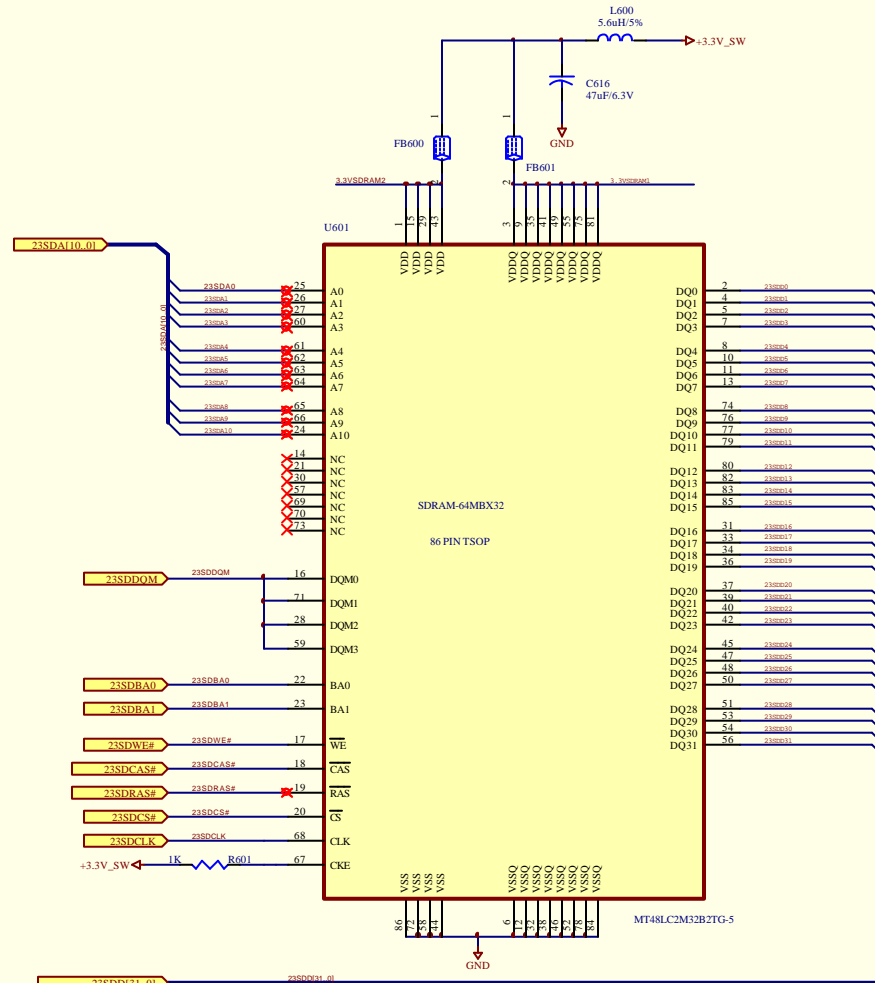
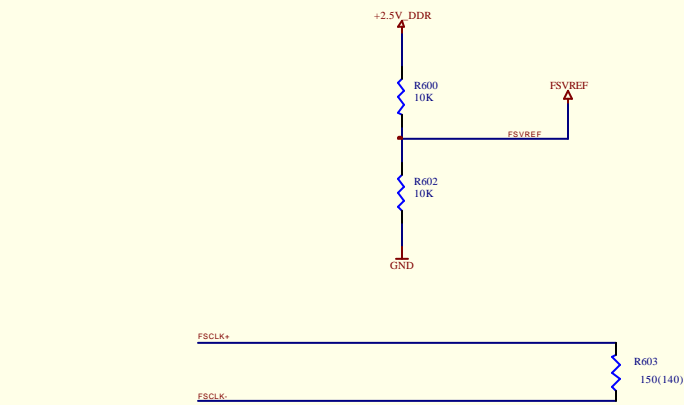
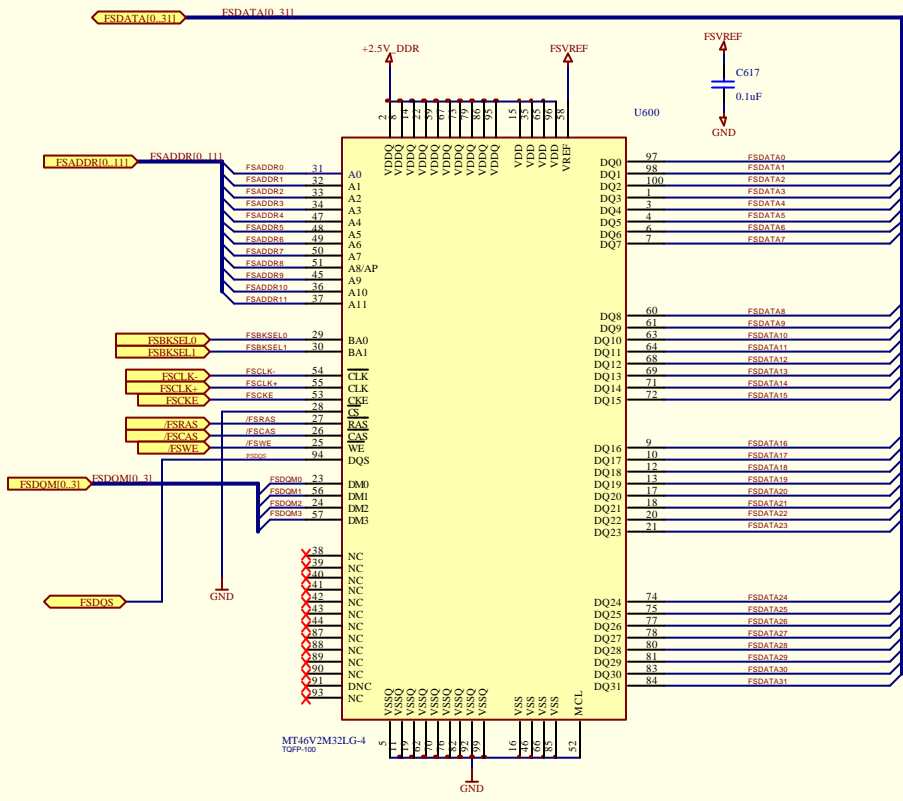
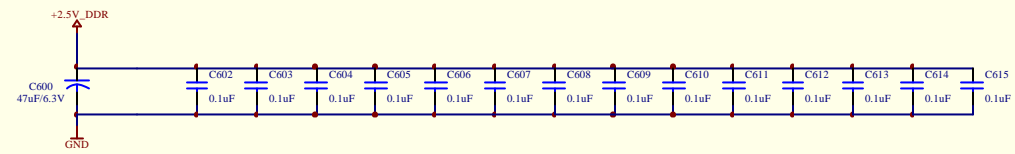
Rev:	1.0	Date:	11/14/2005
Drawn:	Y. H. Kim	Checked:	Y. H. Kim
Appr'd:		Appr'd:	



Title		
Size	Number	Revision
C		
Date:	11-Apr-2005	Sheet of
File:	F:\NSERC\MITL\PowerVI\Tech\SIEM.MAT\PowerSupply_010907741.vsb	

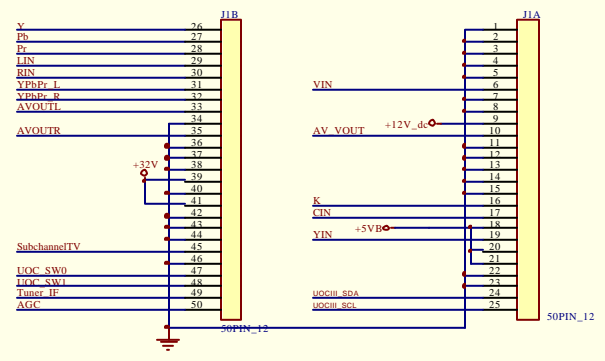
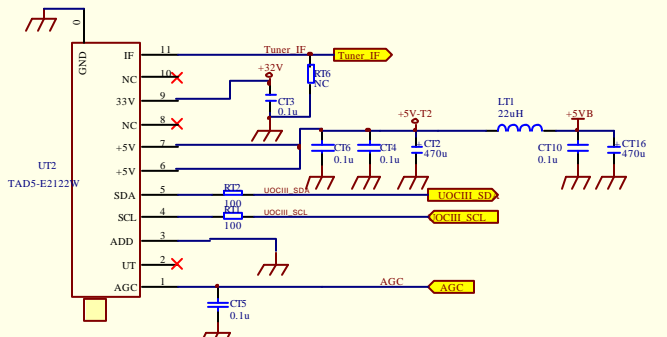
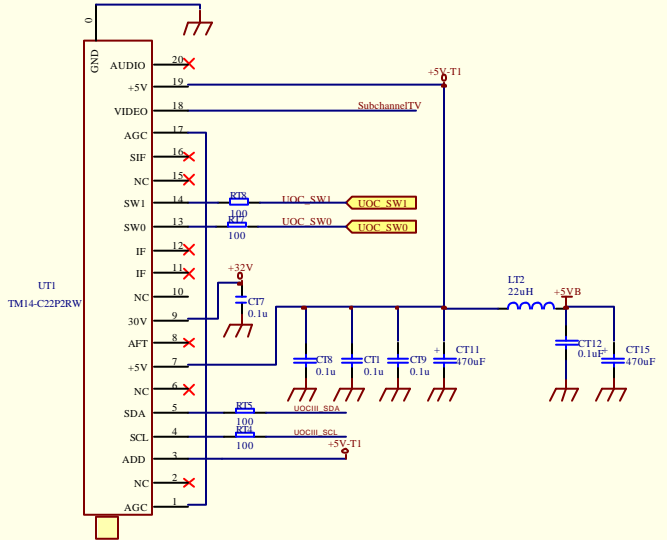
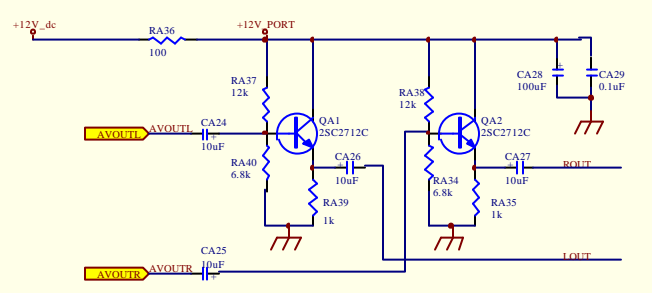
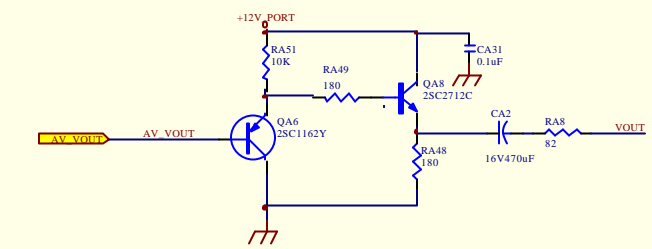
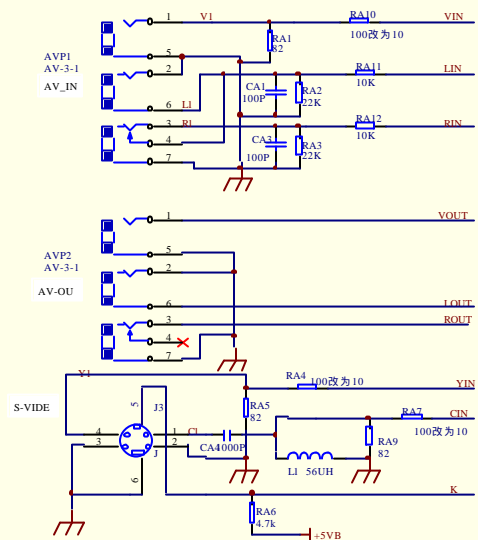
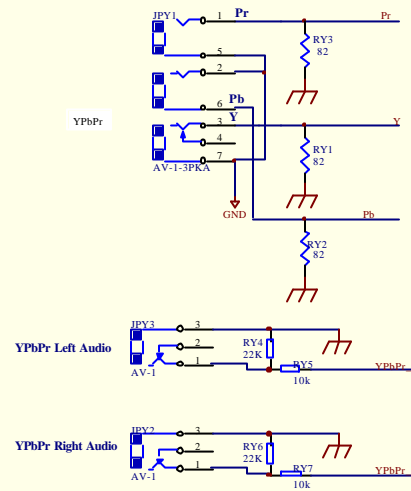


Title		
Size	Number	Revision
A4		
Date:	13-Apr-2005	Sheet of
File:	E:\USER\M\LP08\YLT-chn\LS08 MAIN TD	AS7502050223.Ddb

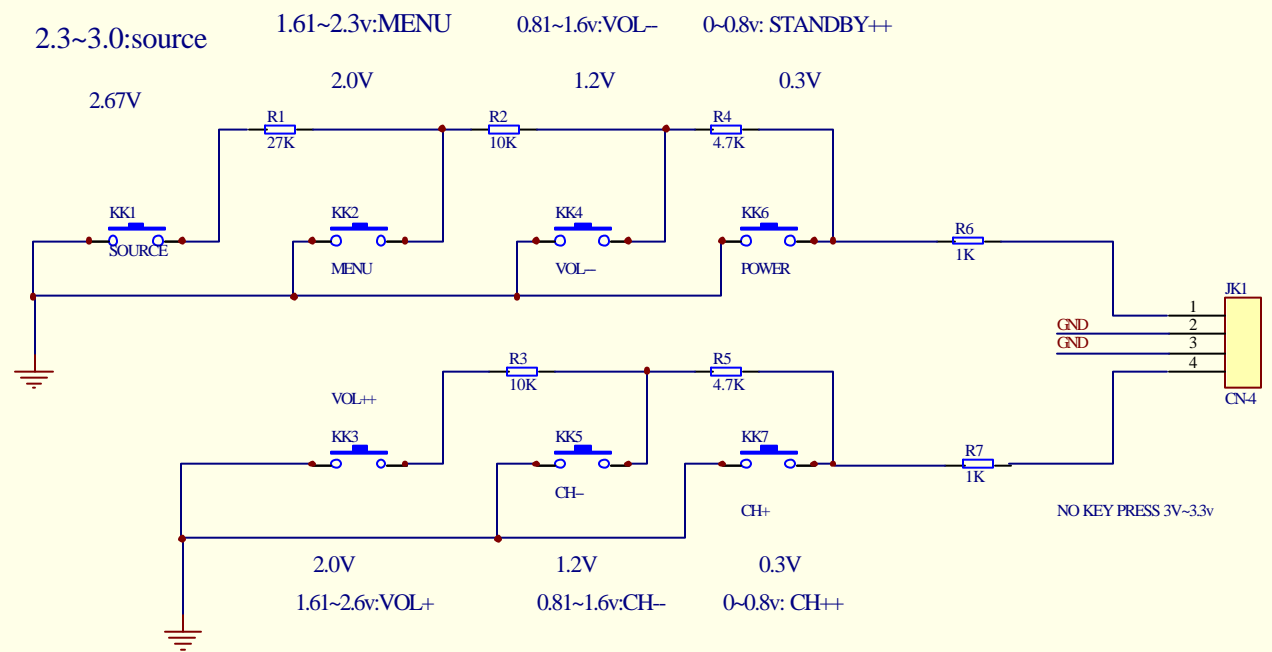


Title		
Size	Number	Revision
OrCAD C		
Date:	13-Apr-2005	Sheet of
File:	E:\USER\MEL\BOS\VT-chn1\SDR_MA\SDRAM\SDRAM-70050733.Dsn	

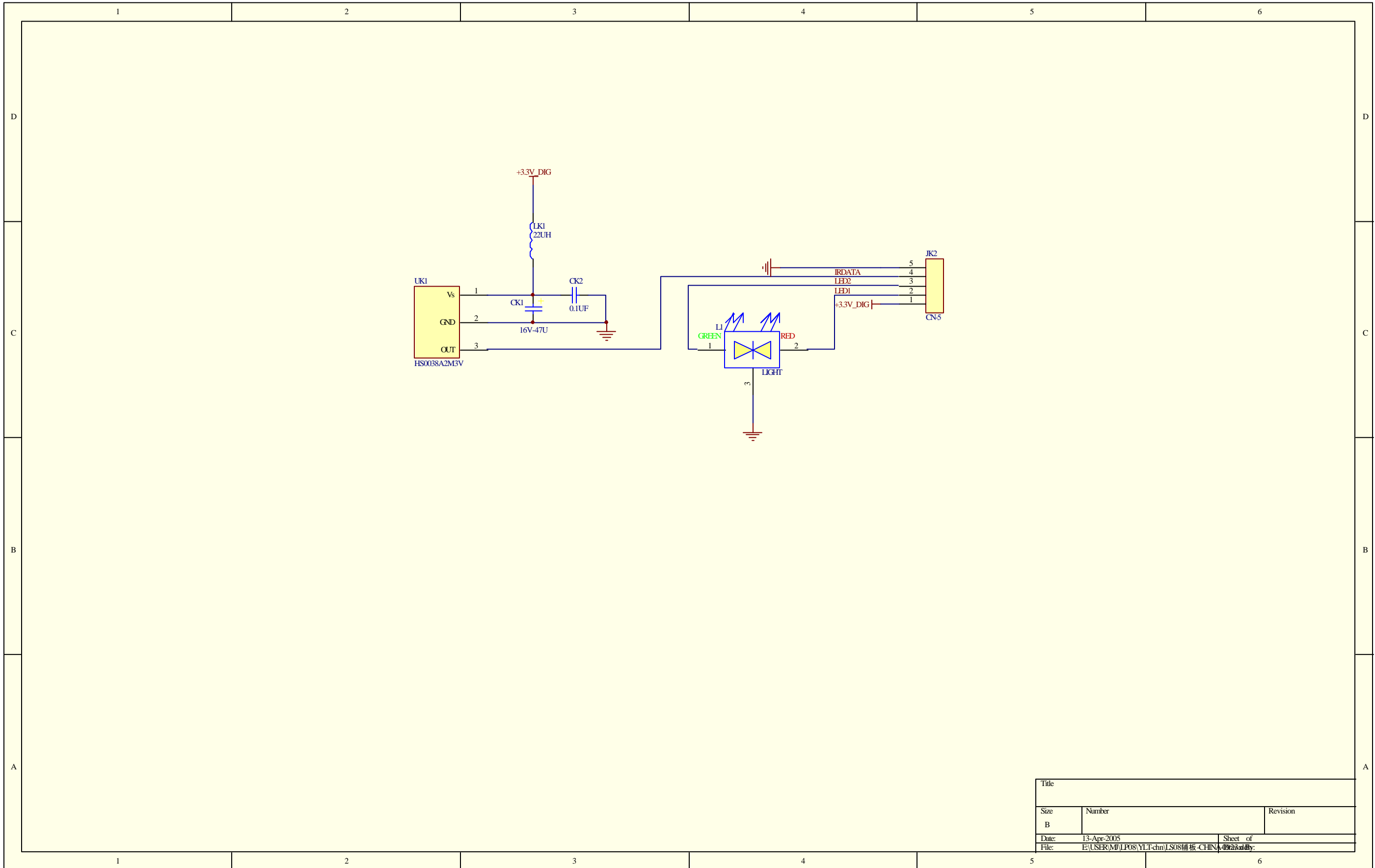
Component Video Inputs



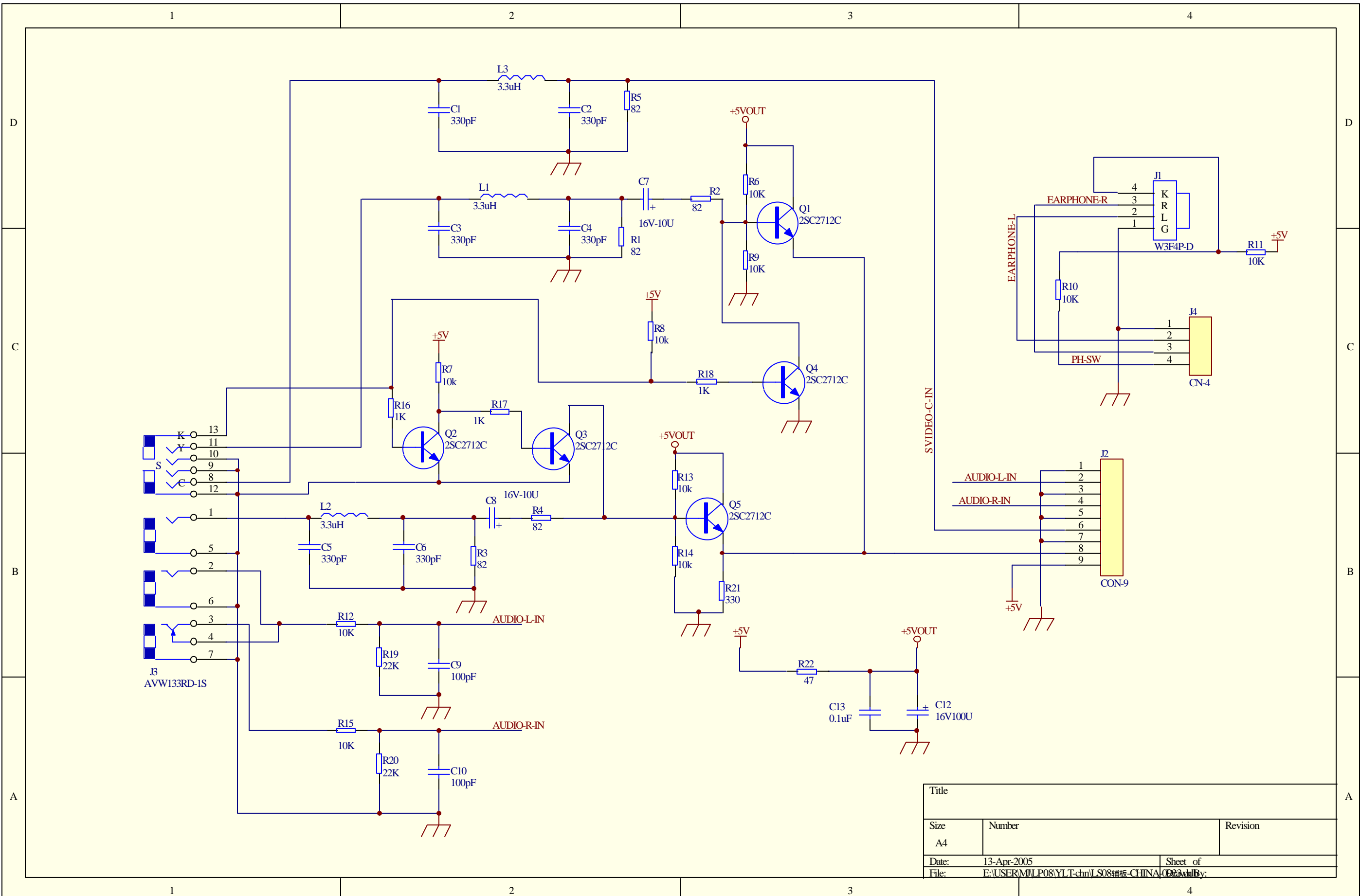
Title		
Size	Number	Revision
B	MUX/CONNECTORS	
Date	13-Apr-2015	Sheet of
File	F:\USER\AMU\PC\NT-T-001\SOA\001.DWG	2/2



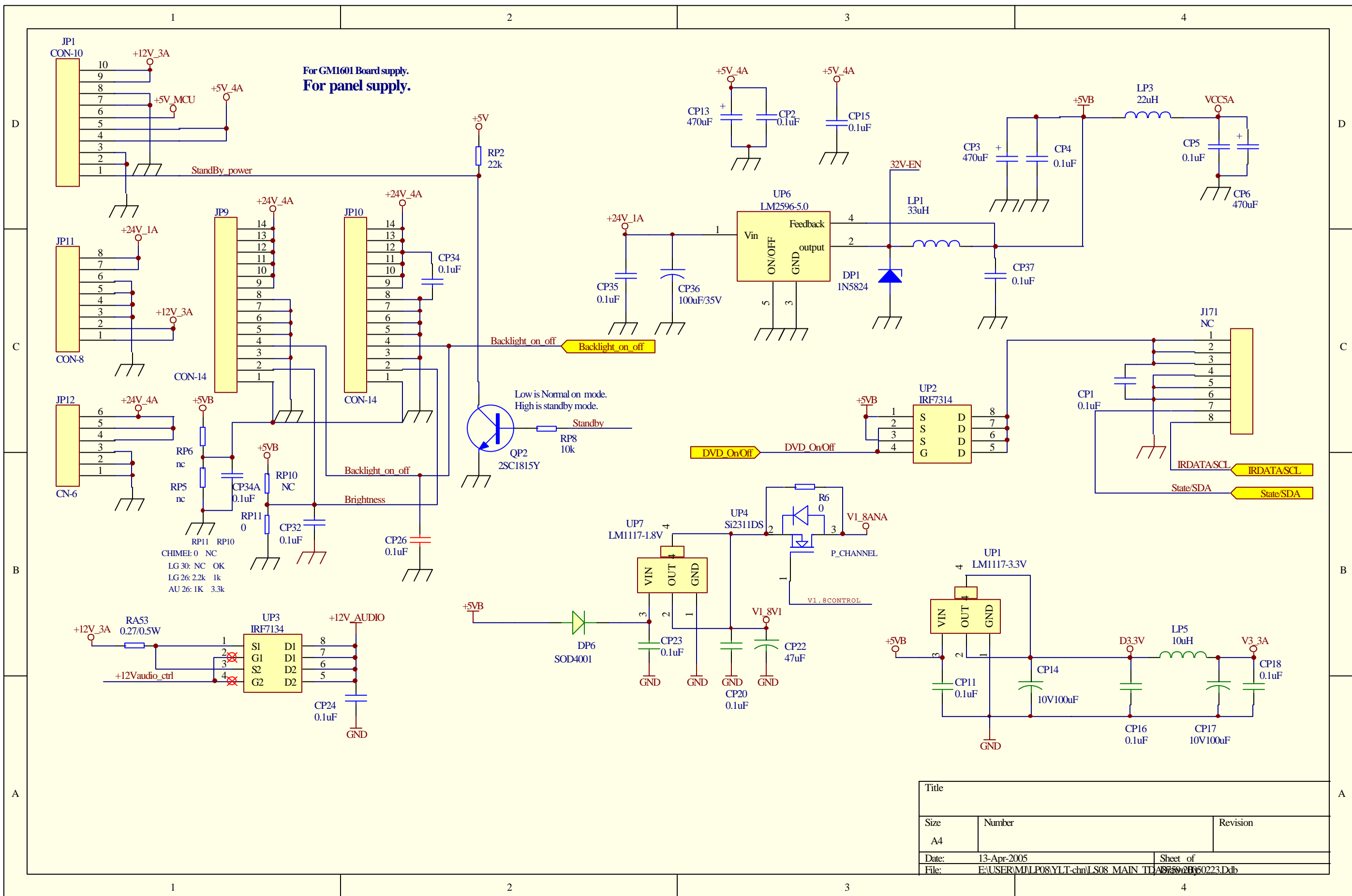
Title		
Size	Number	Revision
B		
Date:	13-Apr-2005	Sheet of
File:	E:\USER\M\LP08\YLT-chn\LS08辅板-CHINA	2 of 2



Title		
Size	Number	Revision
B		
Date:	13-Apr-2005	Sheet of
File:	E:\USER\M\LP08\YLT-chn\LS08辅板-CHINA	2/2



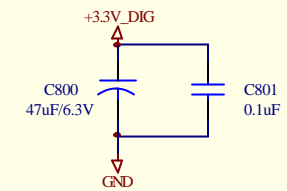
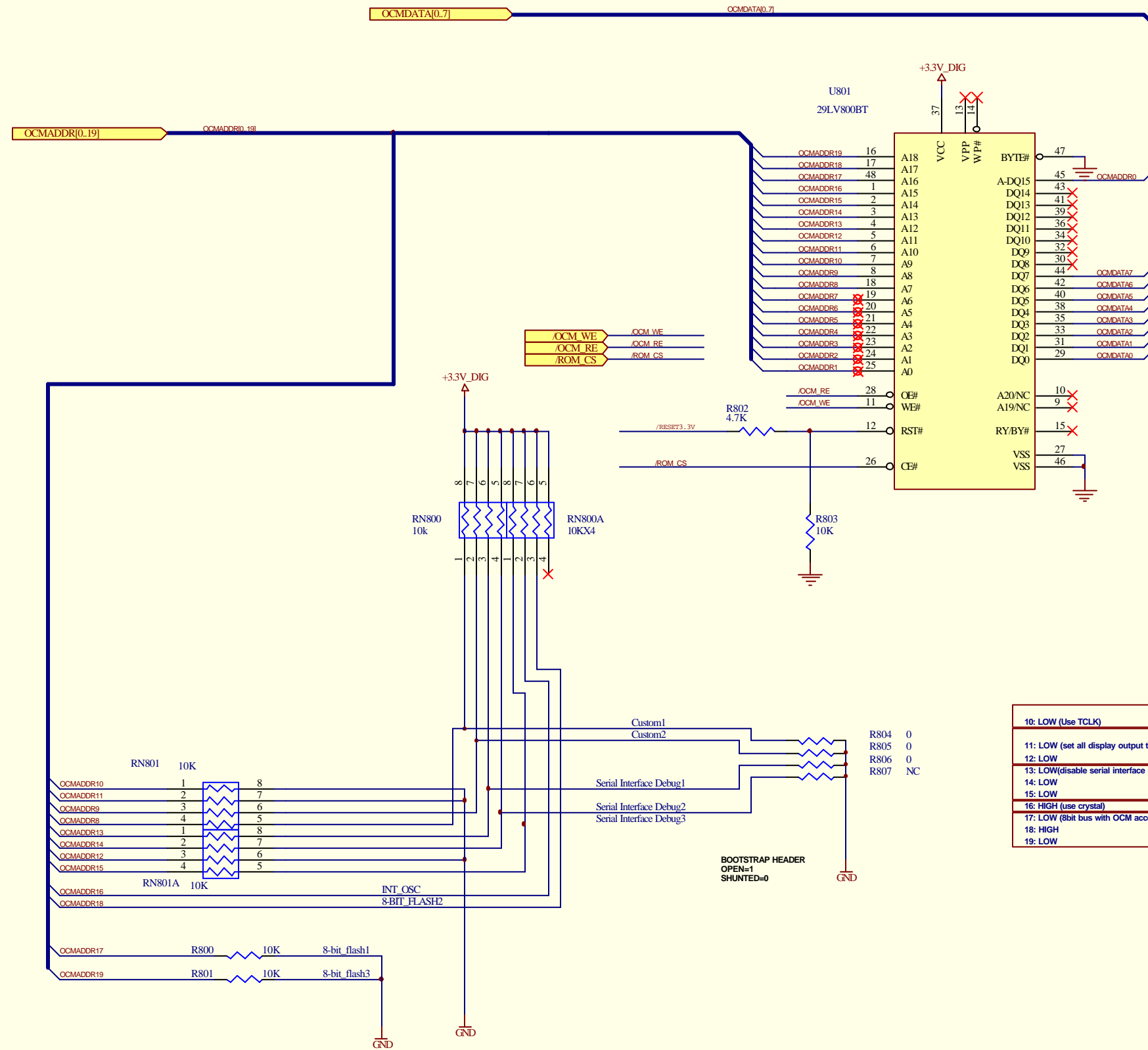
Title		
Size	Number	Revision
A4		
Date:	13-Apr-2005	Sheet of
File:	E:\USER\MPLP08\YLT-chn\LS08#1#5-CHINA\02	Drawn By:



For GM1601 Board supply.
For panel supply.

CHIMEI: 0 NC
LG 30: NC OK
LG 26: 2.2k 1k
AU 26: 1K 3.3k

Title		
Size	Number	Revision
A4		
Date:	13-Apr-2005	Sheet of
File:	E:\USER\M\LP08\YLT-chn\LS08 MAIN TD\AS7502050223.Dcb	



10:	LOW (Use TCLK)
11:	LOW (set all display output to '0')
12:	LOW
13:	LOW(disable serial interface debug)
14:	LOW
15:	LOW
16:	HIGH (use crystal)
17:	LOW (8bit bus with OCM access external ROM)
18:	HIGH
19:	LOW

Title		
Size	Number	Revision
Orcad B		
Date:	13-Apr-2005	Sheet of
File:	E:\USER\MDL\POS\YLT-chn\LS08_MAIN_T\DW750-BW050223.Dxb	