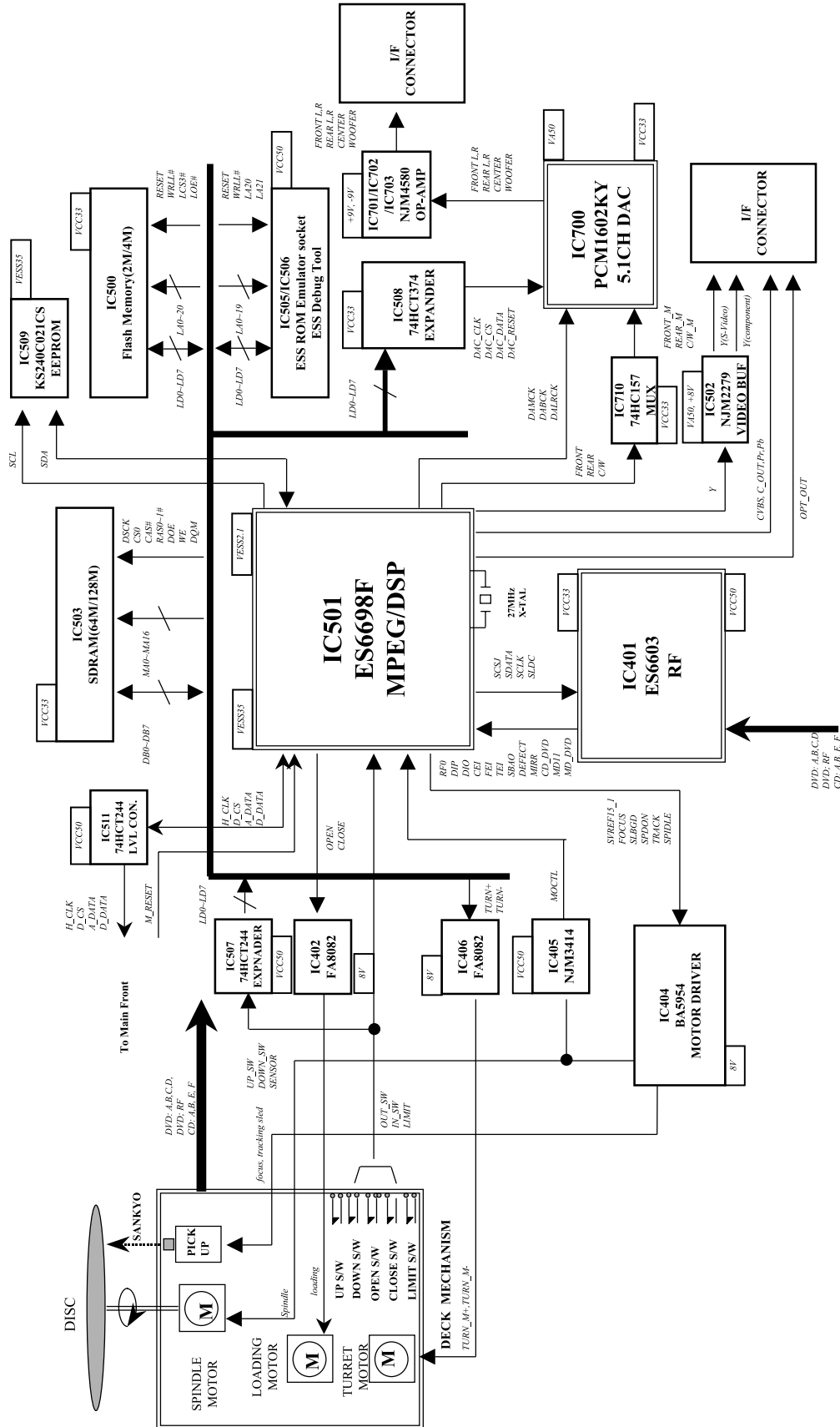
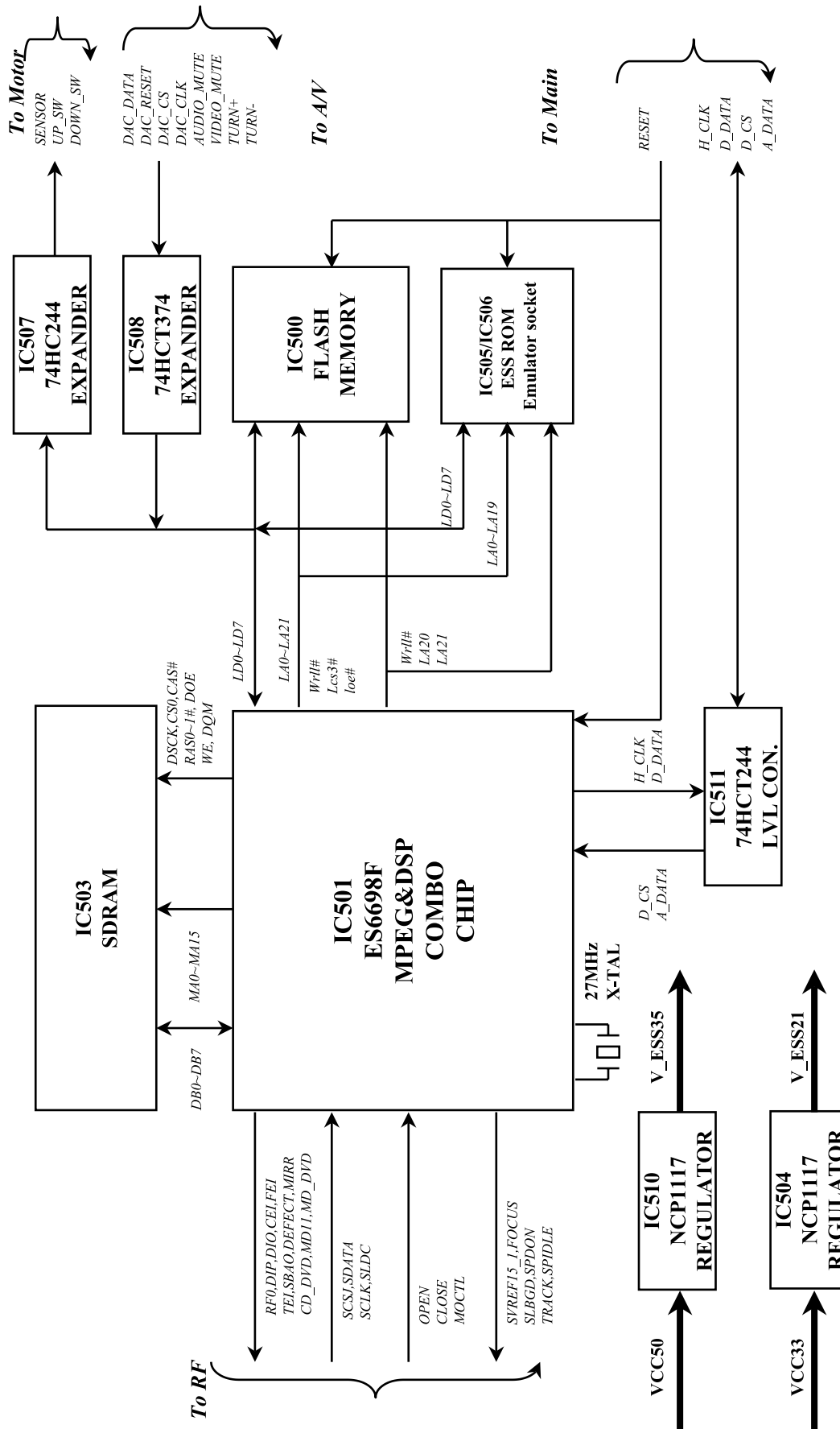


DVD BLOCK DIAGRAM LG LM-K2930X

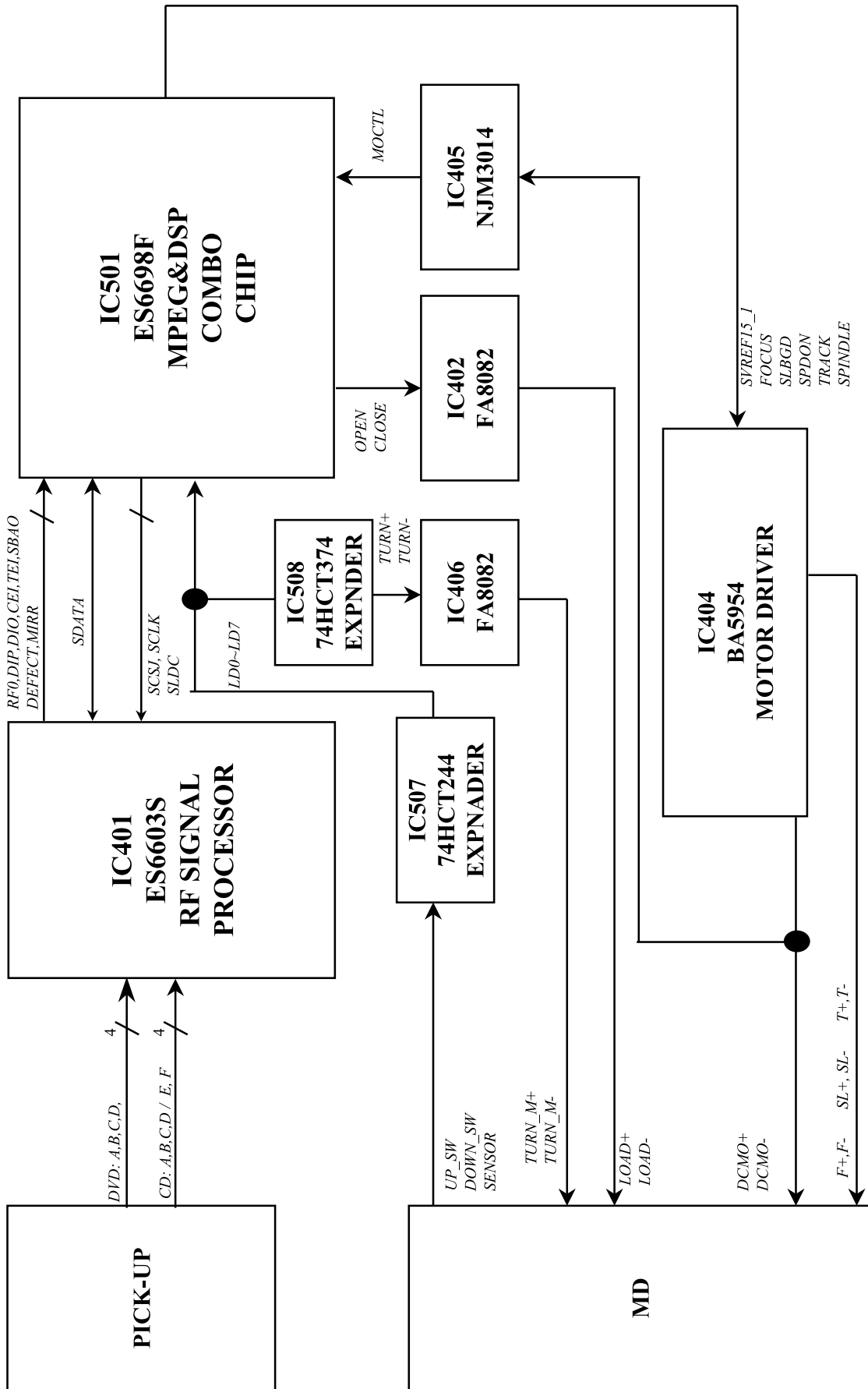
• ESS 3-CHANGER SYSTEM BLOCK DIAGRAM



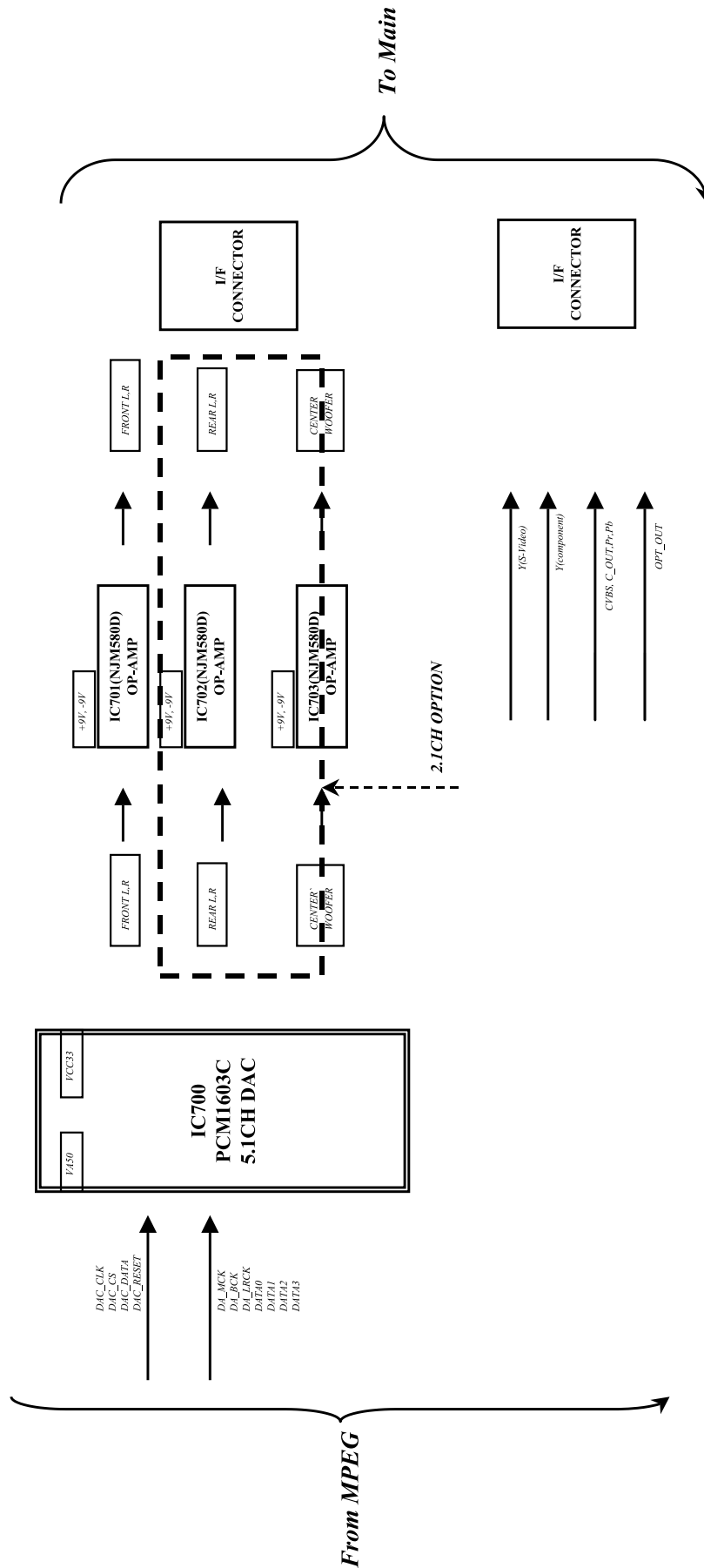
• ESS 3-CHANGER MEMORY & HOST I/F BLOCK DIAGRAM



• **ESS 3-CHANGER SERVO & MOTOR BLOCK DIAGRAM**

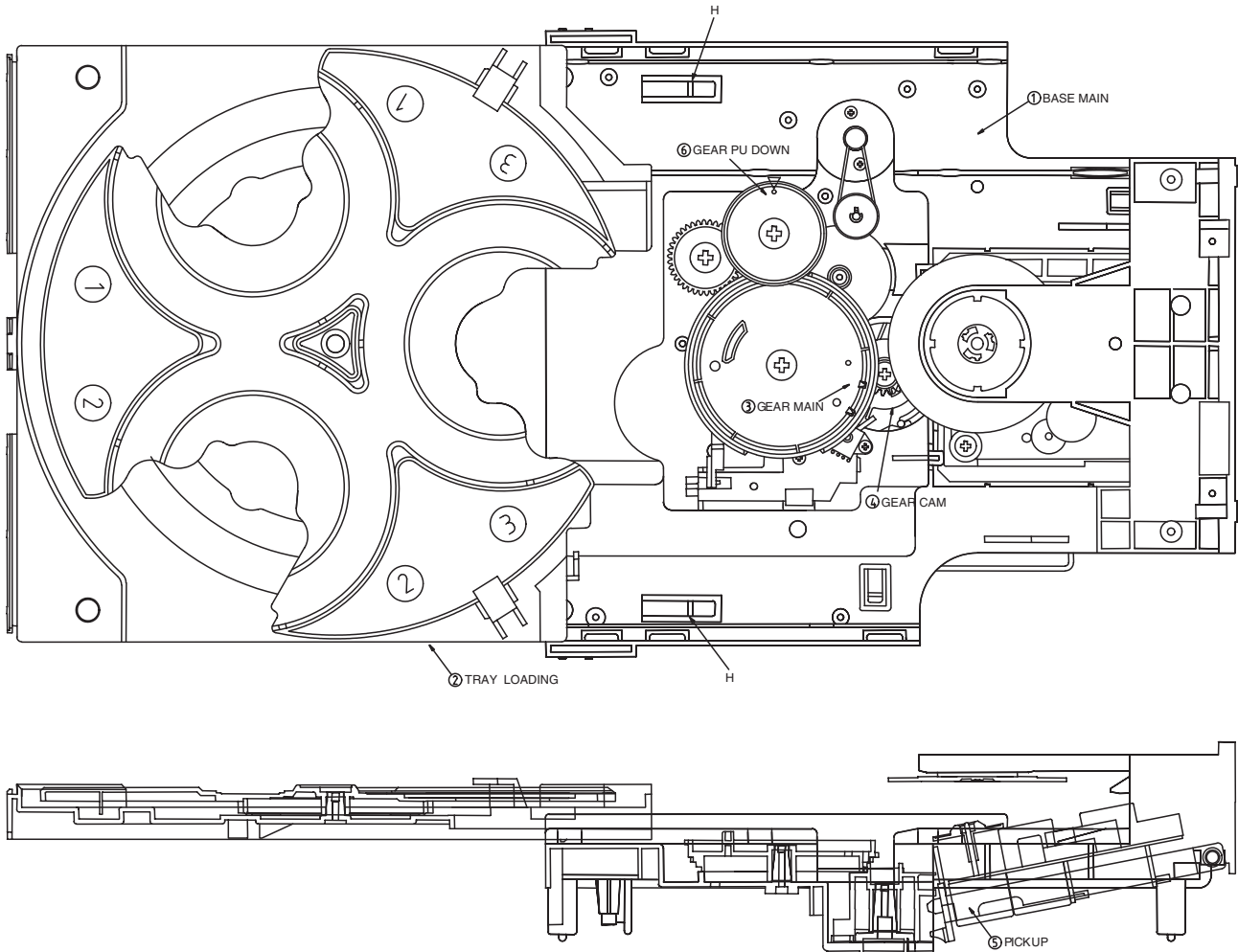


• ESS 3-CHANGER A/V SYSTEM BLOCK DIAGRAM



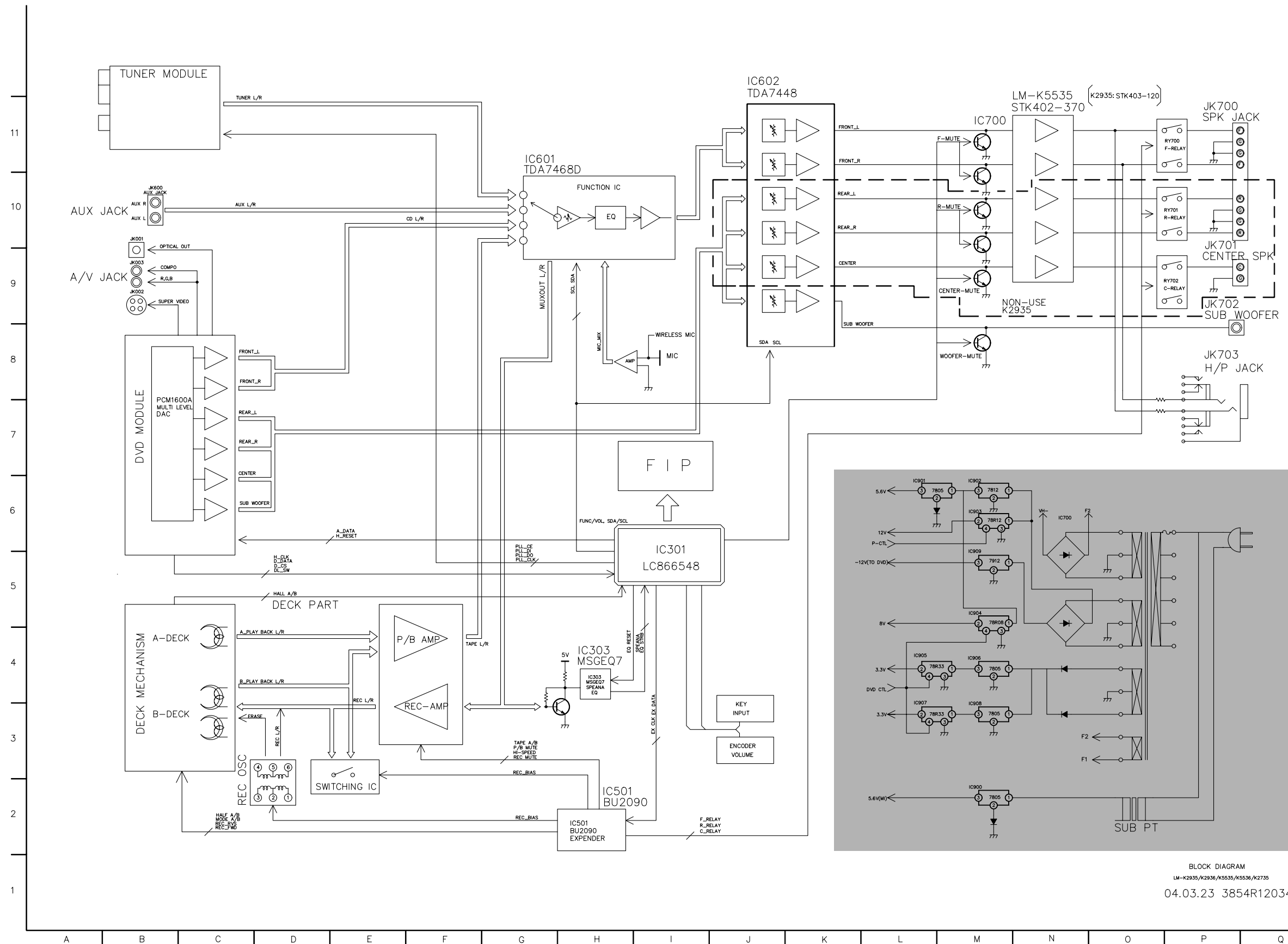
□ REPAIRS REGARDING CD MECHANISM

- IMPROVED MECHOD-WHEN THE TRAY GEARS WERE DISTORTED



1. How to open the tray
Push two hooks (H) of the BASE MAIN, and open the TRAY LOADING
2. How to correct the distorted gears
 - (1) Turn GEAR MAIN until it clicks, if so that PICK-UP is downed completely
 - (2) The hold of GEAR FU DOWN array as the arrow of BASEMAIN
 - (3) Push the TRAY LOADING

□ BLOCK DIAGRAM



LOCATION GUIDE

IC700	N6
IC900	M2
IC901	L6
IC902	M6
IC903	M6
IC904	M5
IC905	L4
IC906	M4
IC907	L3
IC908	M3
IC909	M5

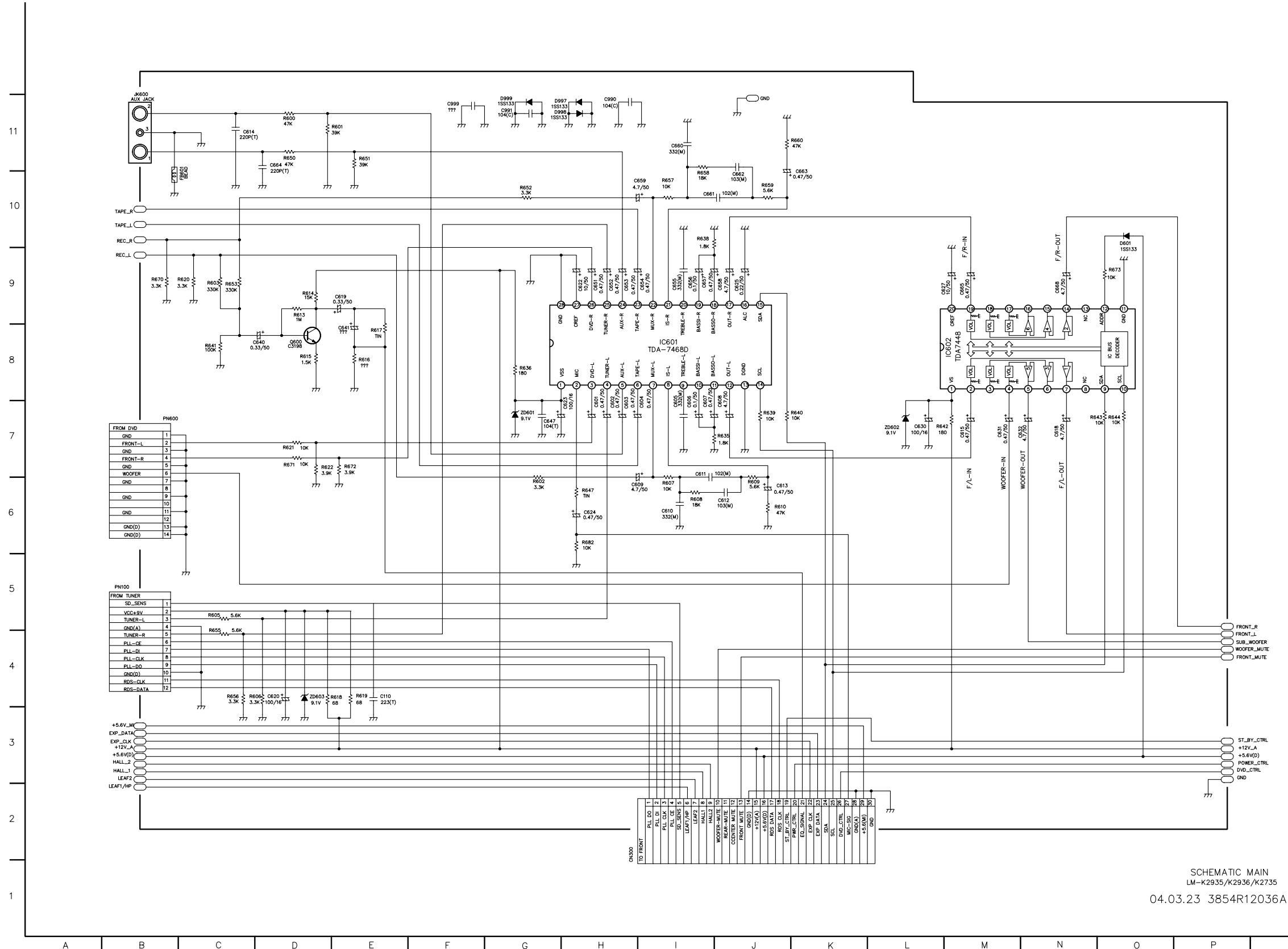
BLOCK DIAGRAM
 LM-K2935/K2936/K5535/K5536/K2735
 04.03.23 3854R12034A

SCHEMATIC DIAGRAMS

MAIN SCHEMATIC DIAGRAM

LOCATION GUIDE

C110	E4	R607	I6
C601	H7	R608	I6
C602	H7	R609	J6
C603	H7	R610	J6
C604	I7	R613	D9
C605	I7	R614	D9
C606	I7	R615	D8
C607	I7	R616	E8
C608	J7	R617	E8
C609	H6	R618	D4
C610	I6	R619	E4
C611	I7	R620	B9
C612	J6	R621	D7
C613	J6	R622	D7
C614	C11	R635	J7
C615	M7	R636	C8
C618	N7	R638	I10
C619	E9	R639	J7
C620	D4	R640	K7
C622	H9	R641	C8
C623	H7	R642	L7
C624	H6	R643	N7
C625	J9	R644	O7
C627	M9	R647	H6
C630	L7	R650	D11
C631	M7	R651	E11
C632	N7	R652	C10
C640	C8	R653	C9
C641	E8	R655	C4
C647	G7	R656	C4
C651	H9	R657	I10
C652	H9	R658	I10
C653	H9	R659	J10
C654	I9	R660	K11
C655	I9	R670	B9
C656	I9	R671	D7
C657	I9	R672	E7
C658	J9	R673	O9
C659	H10	R682	H6
C660	I11	ZD601	G7
C661	I10	ZD602	L7
C662	J10	ZD603	D4
C663	K10		
C664	D11		
C665	M9		
C668	N9		
C990	H11		
C991	G11		
C999	F11		
CN300	H1		
D601	O10		
D997	G11		
D998	G11		
D999	G11		
FB601	C10		
IC601	I8		
IC602	M8		
JK600	B11		
PN100	B5		
PN600	B7		
Q600	D8		
R600	D11		
R601	E11		
R602	G6		
R603	C9		
R605	C5		
R606	C4		

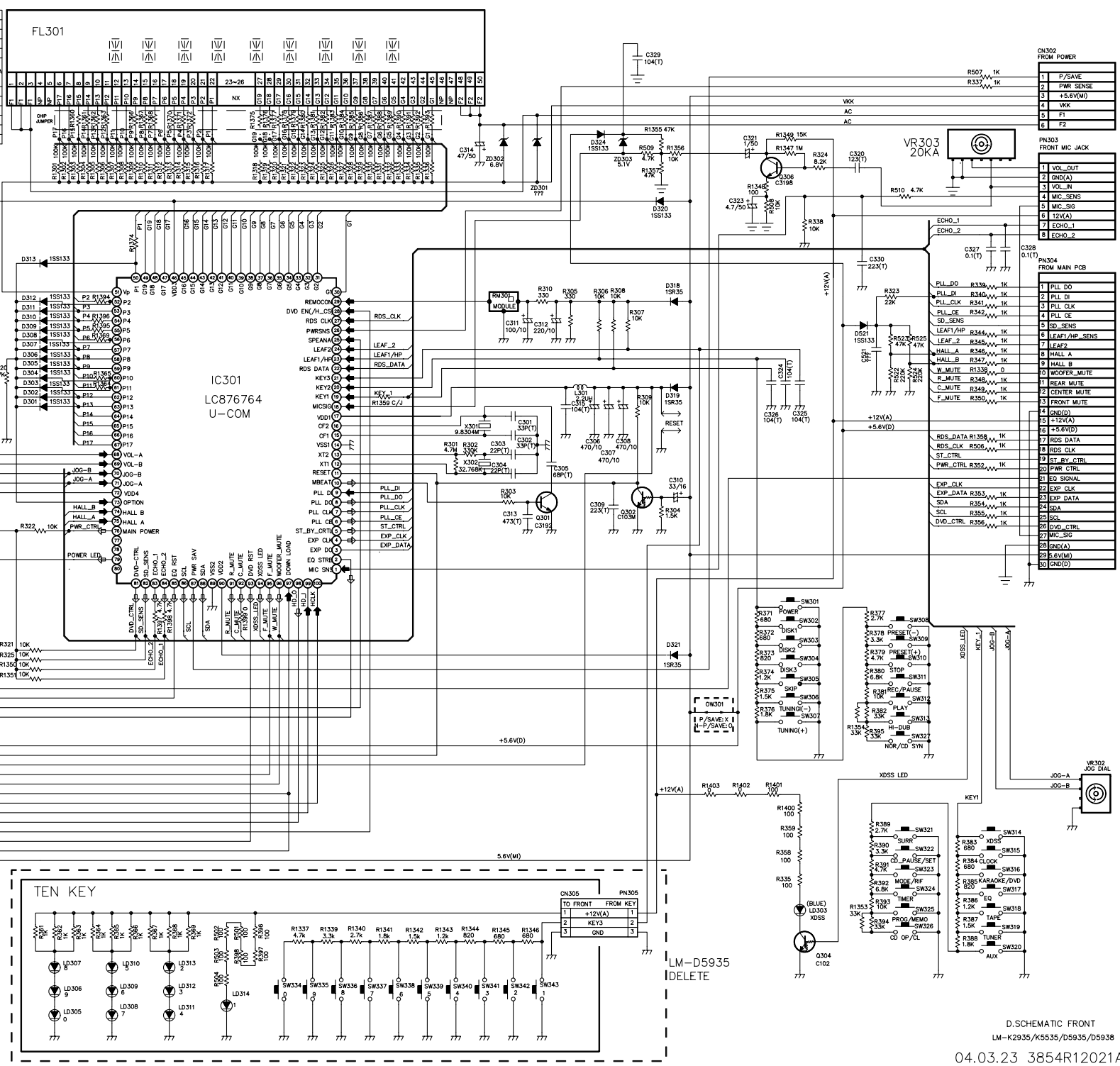


SCHEMATIC MAIN
LM-K2935/K2936/K2735
04.03.23 3854R12036A

FRONT SCHEMATIC DIAGRAM

LOCATION GUIDE

NO	Symbol	CONTENTS	DESCRIPTION
63	D301	COLON	BLINKING
62	D302	RDS	RDS
61	D303	AM STEP	10KHz
60	D304	FM STEP	50KHz
59	D305	AREA-1	EUR-1
58	D306	AREA-2	EUR-2
57	D307	AREA-3	EUR-3
56	D308	DECK A-REVS	S/A-RVS
55	D309	POWER SAVE	POWER SAVE
54	D310	D/A-REVS	D/A-RVS
53	D311	VOLUME	INITIAL MODE
52	D312	MODE OPTION	LM-K2935
50	D313	MODE OPTION	LM-D5935



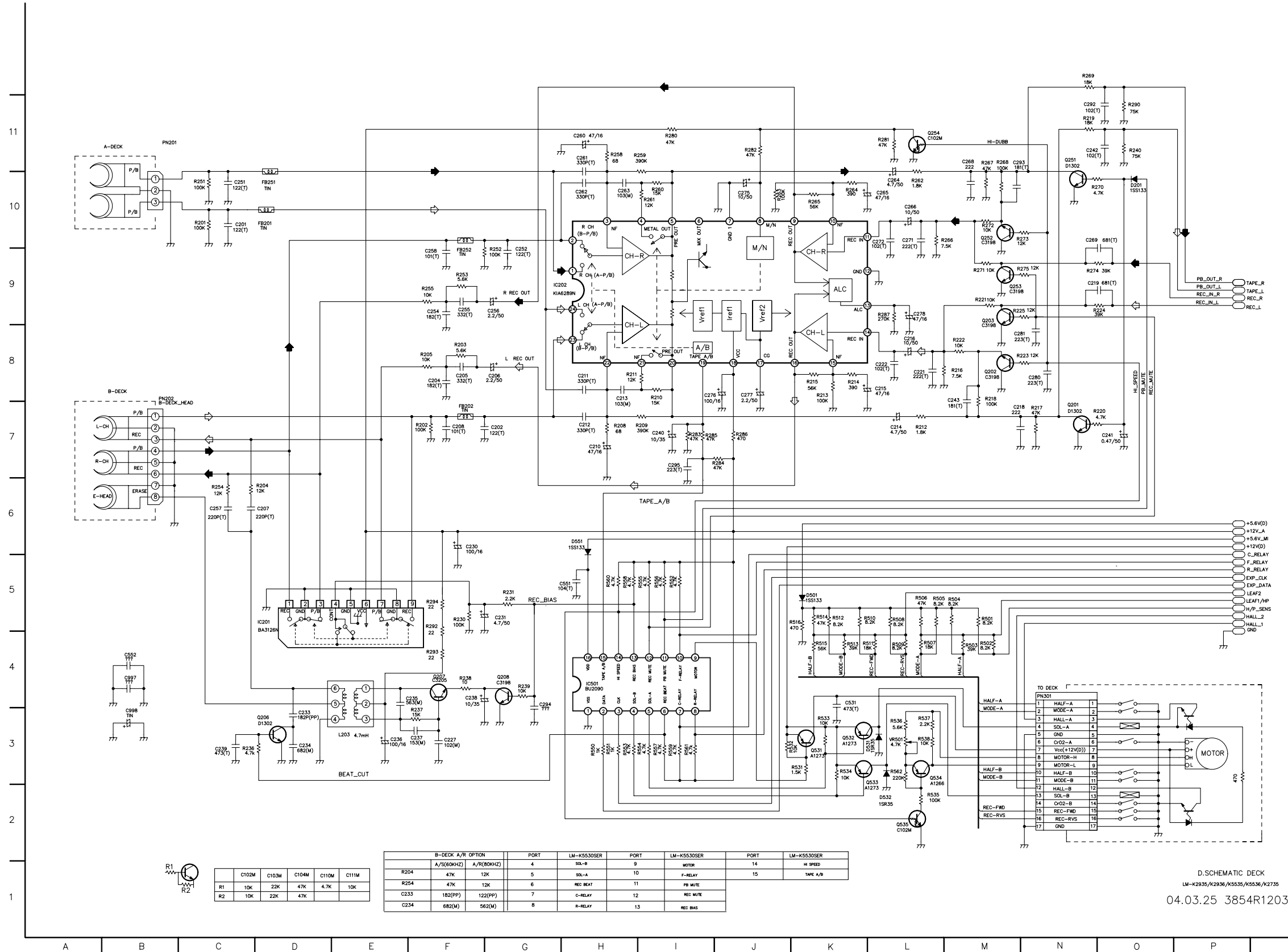
Component	Value	Location	Component	Value	Location	
C301	K8	R1323	H10	R325	E5	
C302	K7	R1324	I10	R326	C4	
C303	J7	R1325	I10	R327	C4	
C304	J7	R1326	I10	R328	C3	
C305	K7	R1327	I10	R329	C3	
C306	K7	R1328	I10	R330	C3	
C307	L7	R1329	I10	R331	C3	
C308	L7	R1330	I10	R332	C3	
C309	K7	R1331	I10	R333	C3	
C310	L7	R1332	I10	R334	M3	
C311	K9	R1333	I10	R337	O11	
C312	K9	R1334	J10	R338	N10	
C313	J7	R1335	J10	R339	O9	
C314	J10	R1336	J10	R340	O9	
C315	K8	R1337	H2	R341	O9	
C316	D10	R1338	O8	R342	O9	
C317	D10	R1339	I2	R344	O9	
C318	D9	R1340	I2	R345	O8	
C319	E9	R1341	I2	R346	O8	
C320	N10	R1342	I2	R347	O8	
C321	M11	R1343	J2	R348	O8	
C322	E8	R1344	J2	R349	O8	
C323	M10	R1345	J2	R350	O8	
C324	M8	R1346	K2	R352	O7	
C325	N8	R1347	M10	R353	O7	
C326	M8	R1348	M10	R354	O7	
C327	O9	R1349	M11	R355	O7	
C328	P9	R1350	E5	R356	O7	
C329	L11	R1351	E5	R357	D5	
C330	N9	R1352	E8	R358	M3	
C331	N8	R1353	N3	R359	M3	
C332	N8	R1354	N4	R361	F2	
C333	D8	R1355	L11	R362	F2	
C334	K3	R1356	L10	R363	F2	
C335	E8	R1357	L10	R364	F2	
C336	E8	R1358	O7	R365	F2	
C337	E8	R1359	I8	R366	G2	
C338	E8	R1360	F11	R367	O2	
C339	E8	R1361	F11	R368	G2	
C340	E8	R1362	F11	R369	G2	
C341	E8	R1363	F11	R370	D3	
C342	E9	R1364	F8	R371	M6	
C343	E9	R1365	F8	R372	M5	
C344	E9	R1366	G11	R373	M5	
C345	E9	R1367	G11	R374	M5	
C346	E9	R1368	G11	R375	M5	
C347	E9	R1369	F9	R376	M5	
C348	L9	R1370	G11	R377	N6	
C349	L8	R1371	G11	R378	N5	
C350	L10	R1372	G11	R379	N5	
C351	D32	L5	R1374	G9	R380	N5
C352	L32	C9	R1375	H11	R381	N5
C353	C8	R1376	H11	R382	N5	
C354	K11	R1377	H11	R383	O3	
C355	C9	R1378	H11	R384	O3	
C356	N9	R1379	H11	R385	O3	
C357	F12	R1380	H11	R386	O3	
C358	G8	R1381	I11	R387	O2	
C359	D9	R1382	I11	R388	O2	
C360	K8	R1383	I11	R389	N3	
C361	C5	R1384	I11	R390	N3	
C362	N3	R1385	I11	R391	N3	
C363	F1	R1386	I11	R392	N3	
C364	F2	R1387	I11	R393	N3	
C365	F2	R1388	I11	R394	N2	
C366	F2	R1389	I11	R395	N4	
C367	F2	R1390	I11	R396	H2	
C368	G2	R1391	J11	R397	H2	
C369	G1	R1392	J11	R398	H2	
C370	G2	R1393	J11	R399	D9	
C371	G2	R1394	F9	R401	H2	
C372	H2	R1395	F9	R402	H2	
C373	P11	R1396	F9	R403	H2	
C374	P9	R1397	G5	R404	H2	
C375	L3	R1398	G5	R405	O7	
C376	B4	R1399	H5	R406	O11	
C377	B5	R1400	M4	R407	M10	
C378	K7	R1401	M4	R408	L10	
C379	L7	R1402	M4	R409	O10	
C380	C2	R1403	M4	R410	D3	
C381	N2	R301	J7	R522	O8	
C382	M10	R302	J7	R523	O8	
C383	F10	R303	J7	R524	O8	
C384	F10	R304	L7	R525	O8	
C385	F10	R305	K9	R526	O8	
C386	F10	R306	K9	R527	O8	
C387	F10	R307	L9	R528	O8	
C388	F10	R308	L9	R529	O8	
C389	F10	R309	L8	R530	N5	
C390	G10	R310	K9	R531	N5	
C391	G10	R311	D10	R532	N5	
C392	G10	R312	E10	R533	N5	
C393	G10	R313	C9	R534	O6	
C394	G10	R314	D9	R535	O5	
C395	G10	R315	D9	R536	O5	
C396	G10	R316	C8	R537	O5	
C397	G10	R317	D8	R538	O5	
C398	G10	R318	D8	R539	O5	
C399	G10	R319	D8	R540	O5	
C400	G10	R320	E8	R541	O5	
C401	H10	R321	E5	R542	O5	
C402	H10	R322	E7	R543	O5	
C403	H10	R323	N9	R544	O5	
C404	H10	R324	N10	R545	O5	

D.SCHEMATIC FRONT
LM-K2935/K5535/D5935/D5938
04.03.23 3854R12021A

• DECK SCHEMATIC DIAGRAM

LOCATION GUIDE

C201	C10	R208	H7
C202	G7	R209	H7
C204	F8	R210	I8
C205	F8	R211	H8
C206	G8	R212	L7
C207	D6	R213	K8
C208	F7	R214	K8
C210	H7	R215	K8
C211	H8	R216	M8
C212	H7	R217	N7
C213	H8	R218	M8
C214	L7	R219	N11
C215	L8	R220	N7
C216	L8	R221	M9
C218	M7	R222	M8
C219	N9	R223	M8
C221	L8	R224	N9
C222	L8	R225	M9
C227	F3	R230	F5
C230	F6	R231	G5
C231	G5	R236	C3
C233	D3	R237	F3
C234	D3	R238	F4
C235	E4	R239	G4
C236	E3	R240	O11
C237	F3	R251	C10
C238	F4	R252	G9
C239	C3	R253	F9
C240	I7	R254	G6
C241	O7	R255	F9
C242	N11	R258	H11
C243	M7	R259	H11
C251	C10	R260	I10
C252	G9	R261	I10
C254	F9	R262	L10
C255	F9	R263	I10
C256	G9	R264	K10
C257	C6	R265	K10
C258	F9	R266	L10
C260	H11	R267	M11
C261	H11	R268	M11
C262	H10	R269	N12
C263	H10	R270	N10
C264	L10	R271	M9
C265	L10	R272	M10
C266	L10	R273	M10
C268	M11	R274	N9
C269	N10	R275	M9
C271	L10	R280	I11
C272	L10	R281	L11
C275	J10	R282	J11
C276	I8	R283	I7
C277	J8	R284	I7
C278	L9	R285	I7
C280	N8	R286	J7
C281	M8	R287	L9
C292	N11	R290	O11
C293	M11	R292	F5
C294	C4	R293	F4
C295	I7	R294	F5
C531	K4	R501	M5
C551	G5	R502	M4
C552	B4	R503	M4
C997	B4	R504	M5
C998	B3	R505	L5
D201	O10	R506	L5
D501	K5	R507	L4
D531	L3	R508	L5
D532	L2	R509	L4
D551	H6	R510	K5
FB201	D10	R511	K4
FB202	F7	R512	K4
FB251	D10	R513	K4
FB252	F9	R514	K5
IC201	D5	R515	K4
IC202	C9	R516	J5
IC501	H4	R531	K3
L203	E3	R532	K3
PN201	B11	R533	K3
PN202	B8	R534	K3
PN301	N4	R535	L2
Q201	N7	R536	L3
Q202	M8	R537	L3
Q203	M9	R538	L3
Q206	D3	R550	H3
Q207	F4	R551	H3
Q208	G4	R552	I5
Q251	N11	R553	H3
Q252	M10	R554	I3
Q253	M9	R555	I5
Q254	L11	R556	I5
Q531	K3	R557	I3
Q532	K3	R558	H5
Q533	K3	R559	I3
Q534	L3	R560	H5
Q535	L2	R561	I3
R201	C10	R562	L3
R202	F7	VR501	L3
R203	F8		
R204	D6		
R205	F8		

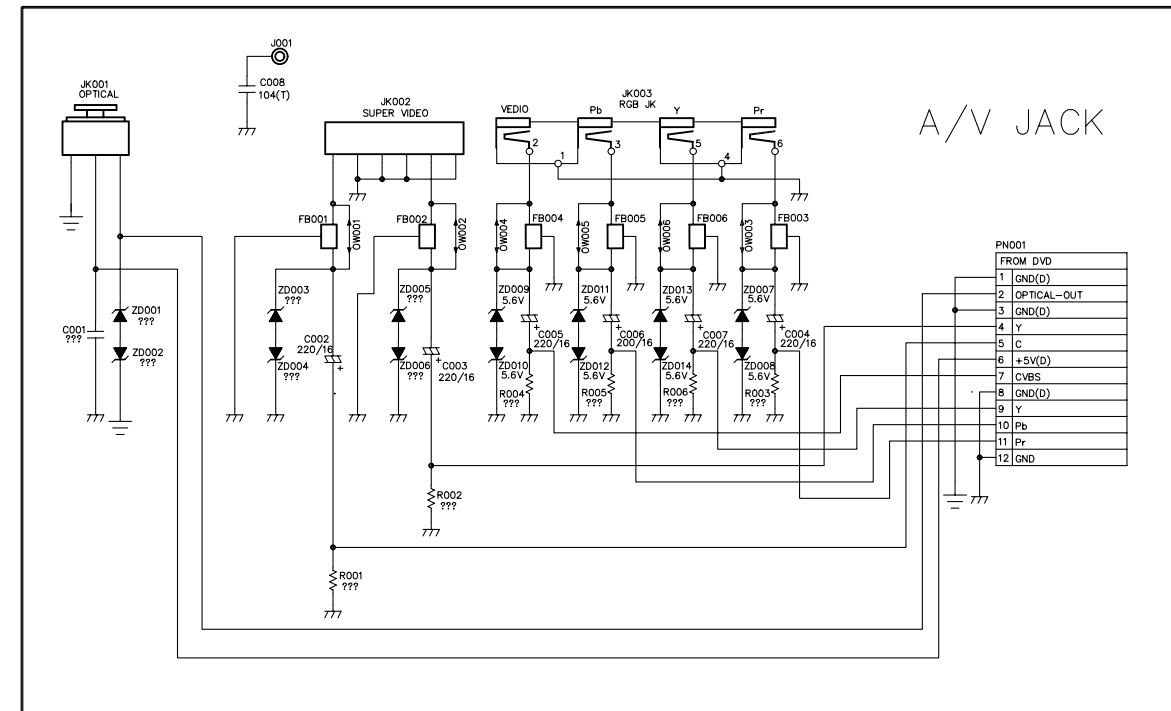
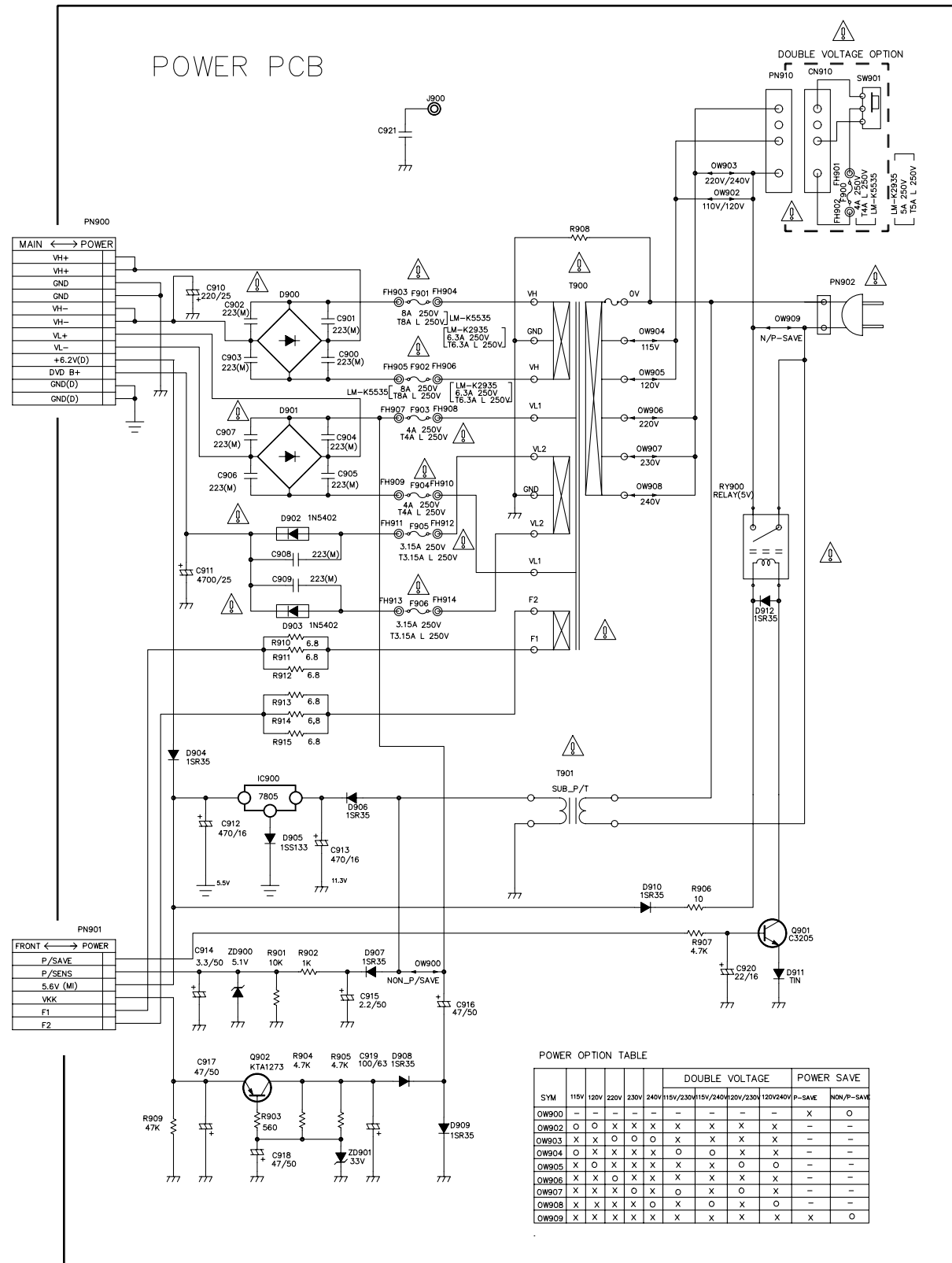


C102M	C103M	C104M	C110M	C111M	
R1	10K	22K	47K	4.7K	10K
R2	10K	22K	47K		

B-DECK A/R OPTION		PORT	LM-K5530SER	PORT	LM-K5530SER	PORT	LM-K5530SER
A/S(60KHZ)	A/R(80KHZ)	4	SOL-B	9	MOTOR	14	H SPEED
R204	47K	12K	5	SOL-A	10	F-RELAY	15
R254	47K	12K	6	REC BEAT	11	PB MUTE	
C233	182(PF)	122(PF)	7	C-RELAY	12	REC MUTE	
C234	682(M)	562(M)	8	R-RELAY	13	REC BIAS	

D. SCHEMATIC DECK
 LM-K2935/K2936/K5535/K5536/K2735
 04.03.25 3854R12031A

• POWER/AV JACK/MIC SCHEMATIC DIAGRAM

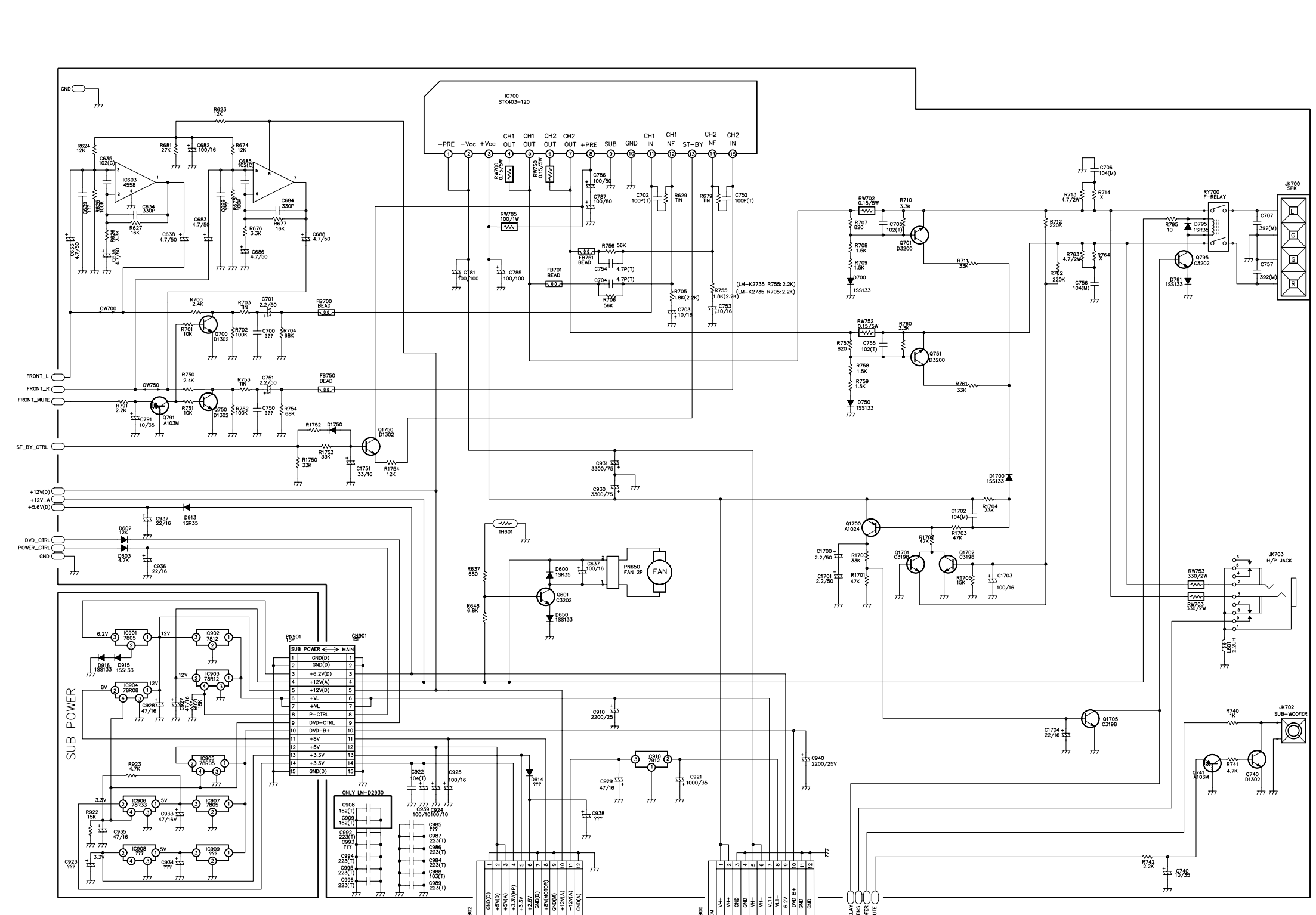


SCHEMATIC POWER/AV JACK
LM-K2935/K2936/K5535/K5536/K2735
VD 3854R12033A

• AMP SCHEMATIC DIAGRAM

LOCATION GUIDE

C1700	K6	IC909	C2
C1701	K6	IC910	I3
C1702	M6	JK700	Q10
C1703	M6	JK702	Q4
C1704	N4	JK703	P6
C1751	E7	L601	P5
C633	B10	PN650	I6
C634	C10	PN901	D5
C635	B11	Q1700	K6
C636	B10	Q1701	L6
C637	H6	Q1702	M6
C638	C10	Q1705	N4
C639	B10	Q1750	E7
C682	C11	Q601	H5
C683	C10	Q700	C9
C684	D10	Q701	L10
C685	D11	Q740	P3
C686	D10	Q741	P3
C688	E10	Q750	C8
C689	D10	Q751	L8
C700	D9	Q791	C8
C701	D9	Q795	P10
C702	I10	R1700	K6
C703	I9	R1701	K6
C704	H9	R1702	L6
C705	L10	R1703	M6
C706	N11	R1704	M6
C707	P10	R1705	M6
C740	O2	R1750	E7
C750	D8	R1752	E7
C751	D8	R1753	E7
C752	J10	R1754	F7
C753	J9	R623	C11
C754	H9	R624	B11
C755	K9	R625	B10
C756	N9	R626	B10
C757	P9	R627	B10
C781	C9	R629	I10
C785	C9	R637	G6
C786	H11	R648	G5
C787	H10	R674	D11
C791	C8	R675	D10
C908	E3	R676	D10
C909	E3	R677	D10
C910	H4	R679	I10
C921	I3	R681	C11
C922	F3	R700	C9
C923	B2	R701	C9
C924	F3	R702	D9
C925	F3	R703	D9
C927	C4	R704	D9
C928	C4	R705	I9
C929	H3	R706	H9
C930	H7	R707	K10
C931	H7	R708	K10
C933	C3	R709	K9
C934	C2	R710	L10
C935	B2	R711	M10
C936	C6	R712	N10
C937	C6	R713	N10
C938	H3	R714	N10
C939	F3	R740	P4
C940	K3	R741	P3
C984	F2	R742	O2
C985	F3	R750	C8
C986	F2	R751	C8
C987	F2	R752	D8
C988	F2	R753	D8
C989	F2	R754	D8
C992	E2	R755	J9
C993	E2	R756	H10
C994	E2	R757	K9
C995	E2	R758	K8
C996	E2	R759	K8
CN900	I1	R760	L9
CN901	E5	R761	M8
CN902	G1	R762	N9
D1700	M7	R763	N10
D1750	E8	R764	N10
D600	H6	R791	B8
D602	B6	R795	O10
D603	B6	R921	C4
D650	H5	R922	B3
D700	K9	RW700	G11
D750	K8	RW702	K10
D791	O9	RW703	O5
D795	P10	RW750	G11
D913	C6	RW752	K9
D914	G3	RW753	O6
D915	B5	RW785	G10
D916	B5	RY700	P10
FB700	E9	TH601	G6
FB701	H9		
FB750	E8		
FB751	H10		
IC603	B11		
IC700	G12		
IC901	B5		
IC902	C5		
IC903	C4		
IC904	B4		
IC905	C3		
IC906	B3		
IC907	C3		
IC908	B2		

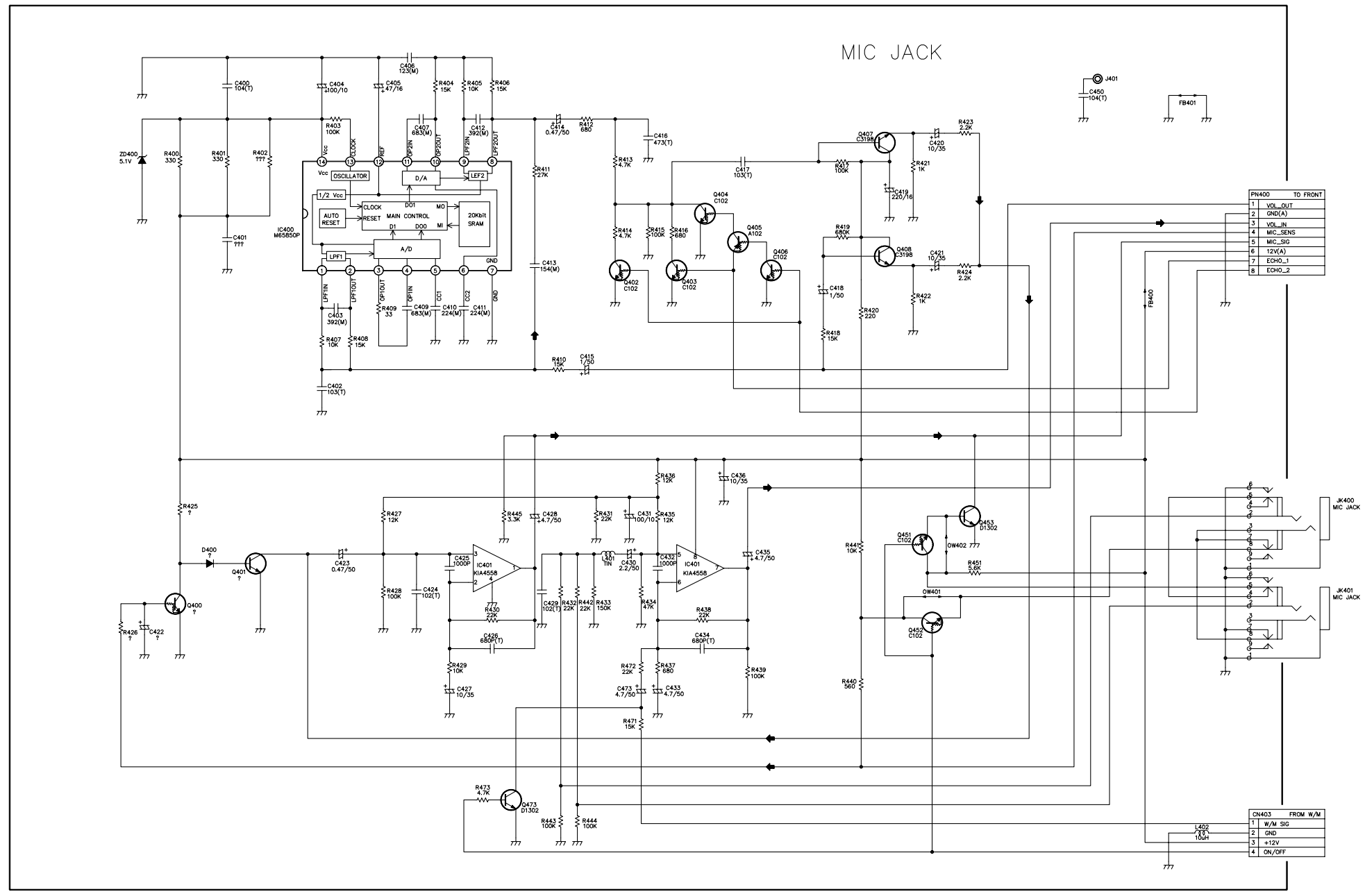


SCHMATIC AMP
LM-K2935/K2936/K2735
04.03.23 3854R12037A

• MIC SCHEMATIC DIAGRAM

LOCATION GUIDE

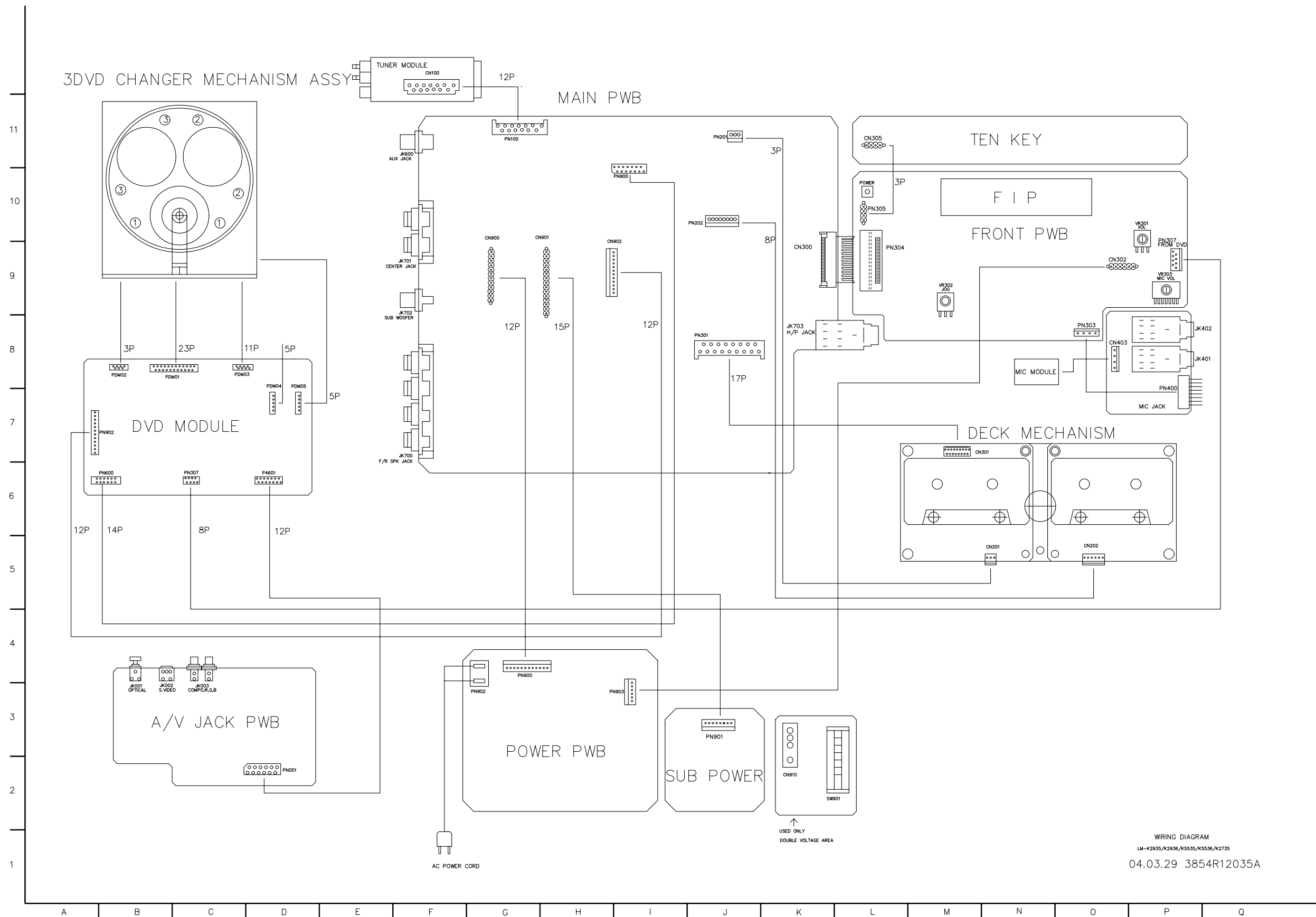
C400	E10	Q406	J9
C401	E9	Q407	K10
C402	F7	Q408	L9
C403	F8	Q451	L6
C404	F10	Q452	L5
C405	F10	Q453	M6
C406	F10	Q473	H3
C407	G10	R400	D10
C409	G8	R401	D10
C410	G8	R402	E10
C411	G8	R403	F10
C412	G10	R404	G10
C413	H8	R405	G10
C414	H10	R406	G10
C415	H7	R407	F8
C416	I10	R408	F8
C417	J9	R409	F8
C418	K8	R410	H7
C419	L9	R411	H9
C420	L10	R412	H10
C421	L9	R413	I10
C422	D5	R414	I9
C423	F5	R415	I9
C424	G5	R416	I9
C425	G5	R417	K9
C426	G4	R418	K8
C427	G4	R419	K9
C428	H6	R420	K8
C429	H5	R421	L9
C430	I5	R422	L8
C431	I6	R423	L10
C432	I5	R424	L8
C433	I4	R425	D6
C434	J4	R426	C5
C435	J5	R427	F6
C436	J6	R428	F5
C450	N10	R429	G4
C473	I4	R430	G5
CN403	O3	R431	H6
D400	D5	R432	H5
FB400	N8	R433	H5
FB401	O10	R434	I5
IC400	E9	R435	I6
IC401	G5	R436	I6
J401	N10	R437	I4
JK400	P6	R438	J5
JK401	P5	R439	J4
L401	I5	R440	K4
L402	O2	R441	K5
OW401	L5	R442	H5
OW402	L5	R443	H3
PN400	O9	R444	H3
Q400	D5	R445	H6
Q401	E5	R451	L5
Q402	I8	R471	I4
Q403	I8	R472	I4
Q404	J9	R473	G3
Q405	J9	ZD400	C10



	C102M	C103M	C104M	C110M	C111M
R1	10K	22K	47K	4.7K	10K
R2	10K	22K	47K		

SCHMATIC MIC
 LM-K2935/K2936/K5535/K5536/K2735
 04.03.23 3854R12032A

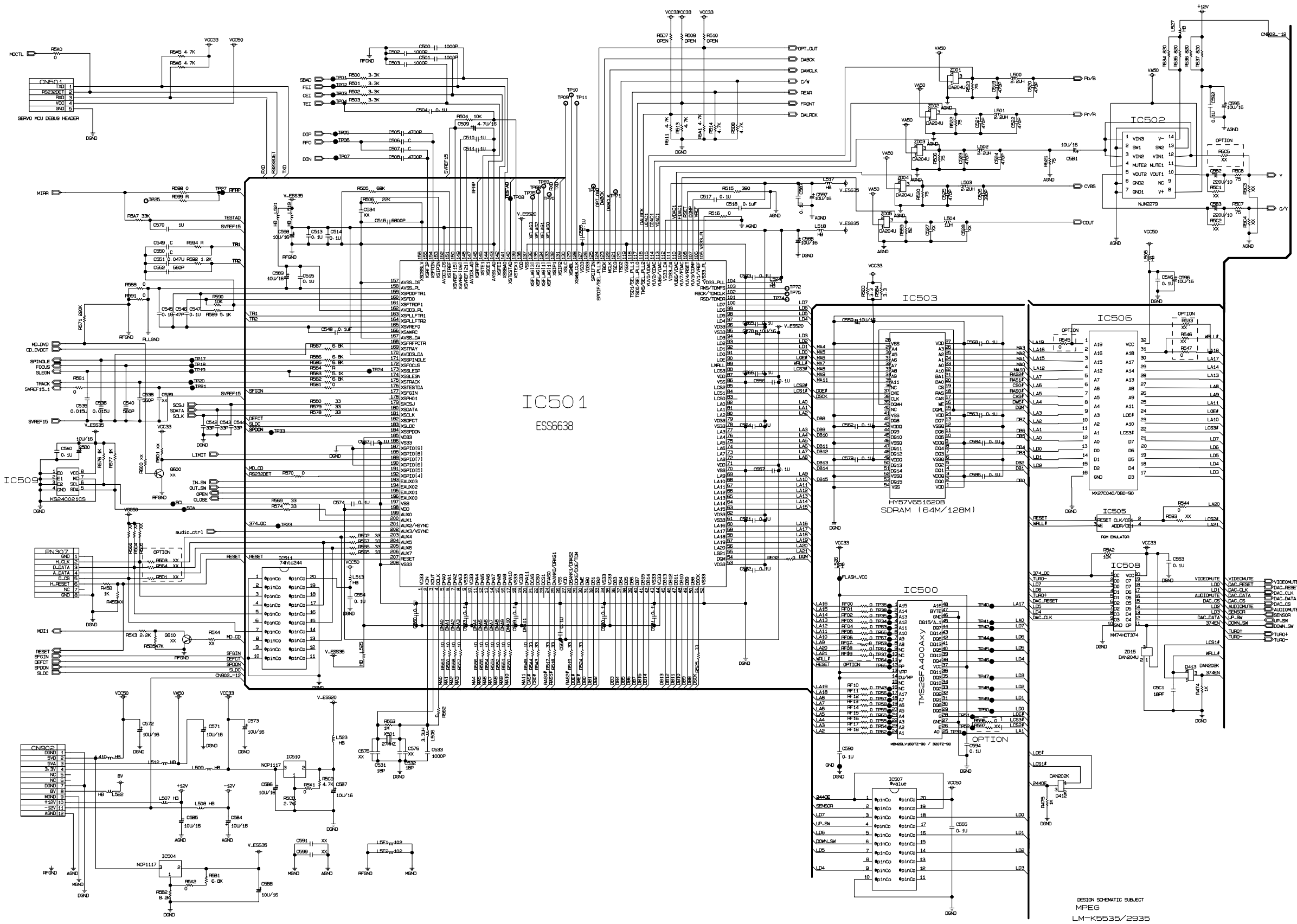
WIRING DIAGRAM



WIRING DIAGRAM
 LM-K2935/K2936/K5535/K5536/K2735
 04.03.29 3854R12035A

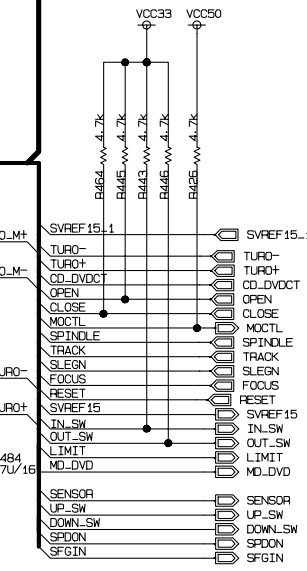
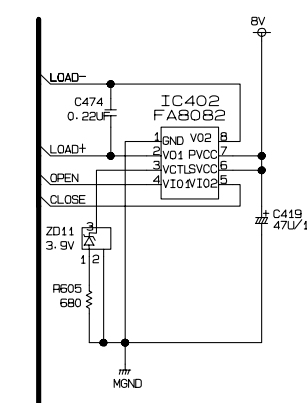
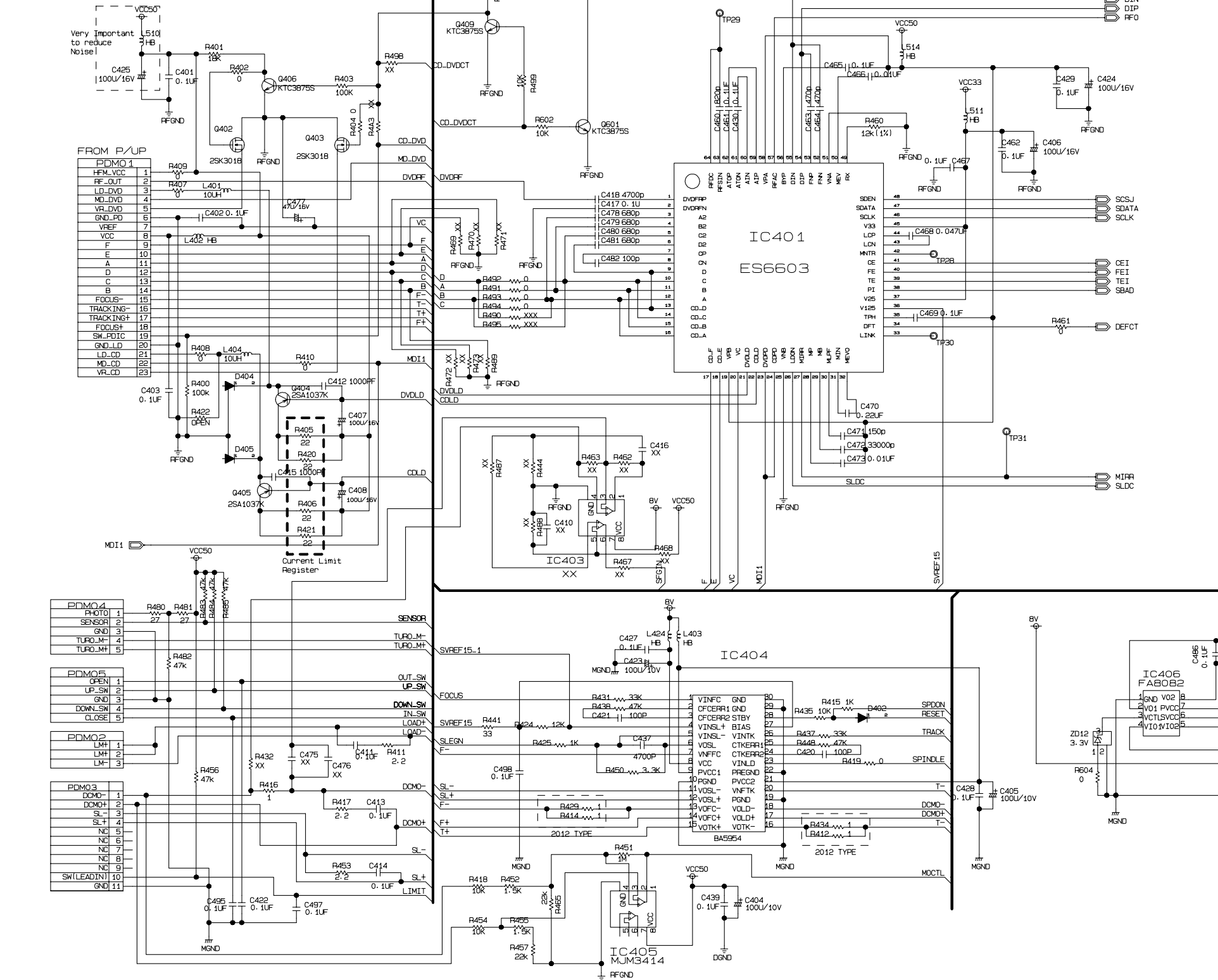
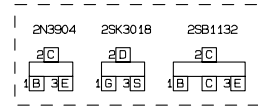
DVD PART SCHEMATIC DIAGRAMS

MPEG SCHEMATIC DIAGRAM



• RF & SERVO SCHEMATIC DIAGRAM

TR & FET DEFINE



DESIGN SCHEMATIC SUBJECT
 RF & SERVO
 LM-K5535/2935

• I/O SCHEMATIC DIAGRAM

